

1997

Summer Instruction Master's Program in Life Span Care and Administration 1997

Nova Southeastern University

Follow this and additional works at: https://nsuworks.nova.edu/abe_pgcoursecatalogs

 Part of the [Education Commons](#)

NSUWorks Citation

Nova Southeastern University, "Summer Instruction Master's Program in Life Span Care and Administration 1997" (1997). *Fischler Postgraduate Course Catalogs*. 438.

https://nsuworks.nova.edu/abe_pgcoursecatalogs/438

This Seminar is brought to you for free and open access by the NSU Course Catalogs and Course Descriptions at NSUWorks. It has been accepted for inclusion in Fischler Postgraduate Course Catalogs by an authorized administrator of NSUWorks. For more information, please contact nsuworks@nova.edu.

S U M M E R I N S T R U C T I O N

1997



Master's Program in Life Span Care and Administration

APPLIED ADDICTION STUDIES
CHILD AND YOUTH CARE ADMINISTRATORS
EARLY CHILDHOOD EDUCATION ADMINISTRATORS
ELDER CARE ADMINISTRATORS
FAMILY SUPPORT STUDIES



**The Profession and Public Policy
Family Systems in Substance Abuse Counseling
Group Theory and Practice**

NOVA
SOUTHEASTERN
UNIVERSITY

PROGRAM

Registry Resort and Spa
Fort Lauderdale, Florida
July 25 - August 2, 1997
July 25 - August 9, 1997
(for Applied Addiction Studies students)

Fischler Center For
The Advancement of Education
3301 College Avenue
Fort Lauderdale, Florida 33314-7796



Master's Program in Life Span Care and Administration

**THE PROFESSION AND PUBLIC POLICY
FAMILY SYSTEMS IN SUBSTANCE ABUSE COUNSELING
GROUP THEORY AND PRACTICE**

1997 Summer Instruction

**Registry Resort & Spa
Fort Lauderdale, Florida
July 25 - August 2, 1997
July 25 - August 9, 1997 (Applied Addiction Studies Students Only)**

Scholars-In-Residence

The photos below and on the front cover of this printed program are outstanding graduates of the Master's Program in Life Span Care and Administration (LSCA) and leaders in their professional fields who are Scholars-In-Residence for our Summer Instruction. This week is dedicated to these graduates, our students, and all others who make valuable contributions to the successes of the LSCA program, the Fischler Center and Nova Southeastern University.



Daryl (Tim) Payne

M.S. Child and Youth Care
Administration
Cohort #74R - 1996



Jonaphine Price

M.S. Family Support Studies
Cohort #9F - 1996



Doris Reiner

M.S. Elder Care Administration
Cohort #1L - 1996



Jane Zuckerman

M.S. Early Childhood Education
Administration
Cohort #73E - 1997

TABLE OF CONTENTS

NOVA SOUTHEASTERN UNIVERSITY'S MISSION STATEMENT	1
LSCA'S VISION AND MISSION	2
PRESIDENT'S MESSAGE - <i>Ovid Lewis</i>	3
NEW EDUCATION PROVOST'S PROFILE - <i>H. Wells Singleton</i>	4
PROGRAM DEAN'S WELCOME - <i>Norman Powell</i>	5
FACULTY FOR THE SUMMER INSTRUCTION CLASSES	7
OPENING KEYNOTE SPEAKER - <i>Ralph Kelly</i>	9
DISTINGUISHED EXPERT IN PUBLIC POLICY - <i>Deborah Wasserman Schultz</i>	11
DISTINGUISHED GUEST LECTURER: PROFESSIONAL ISSUES IN LEADERSHIP - <i>Jethro Toomer</i>	13
SYMPOSIUM ON ISSUES IN PUBLIC POLICY IN LIFE SPAN CARE	14
ANNOUNCEMENTS	16
SPECIAL EVENTS	18
FRIDAY, JULY 25, 1997	19
Registration	
The Profession and Public Policy (Family Systems - for Applied Addiction Studies Students) - Class Session I	
SATURDAY, JULY 26, 1997	20
Program Dean's Welcome - <i>Norman Powell</i>	
Comments from the Education Provost - <i>H. Wells Singleton</i>	
Introduction of Keynote Speaker - <i>Kate Howze</i>	
Opening Keynote Address - <i>Ralph Kelly</i>	
Faculty Sessions with Students - Future Modules	

TABLE OF CONTENTS (continued)

SUNDAY, JULY 27, 1997 21

Introduction to Practicum and Practicum Day - *Adela Beckerman*

Graduate Practicum Presentations

Practicum Skills I

Practicum Skills II

Practicum Skills III

MONDAY, JULY 28, 1997 23

The Profession and Public Policy (Family Systems - for Applied Addiction Studies Students)

Class Session II

Class Session III

Class Session IV

Class Session V

TUESDAY, JULY 29, 1997 25

Day on Campus

Main Campus Orientation

Nova Southeastern University's Vision - *President Ovid Lewis*

Photo Identification Cards - Registrar's Office

Distance Library Services Orientation on Campus

Instruction in the Use of Distance Library Services

Visits of Main Campus Sites and Facilities

TABLE OF CONTENTS (continued)

FOR APPLIED ADDICTION STUDIES STUDENTS ONLY

MONDAY, AUGUST 4, 1997 31

Group Theory and Practice
Class Session I
Class Session II
Class Session III
Class Session IV

TUESDAY, AUGUST 5, 1997 32

Group Theory and Practice
Class Session V
Class Session VI
Class Session VII

WEDNESDAY, AUGUST 6, 1997 33

Group Theory and Practice
Class Session VIII
Class Session IX
Class Session X

THURSDAY, AUGUST 7, 1997 34

Group Theory and Practice
Class Session XI
Class Session XII
Class Session XIII

FRIDAY, AUGUST 8, 1997 35

Group Theory and Practice
Class Presentations

TABLE OF CONTENTS (continued)

SATURDAY, AUGUST 9, 1997	36
Post Test	
Final Group Discussion	
Closing Luncheon	
Closing Activities	
Conferring of Certificates	
FACULTY AND STAFF	37
SUMMER INSTRUCTION FACULTY AND STAFF	40



NOVA SOUTHEASTERN UNIVERSITY'S MISSION STATEMENT

Nova Southeastern University is a dynamic, not-for-profit independent institution dedicated to providing high quality educational programs of distinction from pre-school through the professional and doctoral levels, as well as service to the community. Nova Southeastern University prepares students for lifelong learning and leadership roles in business and the professions. It offers academic programs at times convenient to students, employing innovative delivery systems and rich learning resources on campus and at distant sites. The University fosters inquiry, research, and creative professional activity, by uniting faculty and students in acquiring and applying knowledge in clinical, community, and professional settings.

Approved by the Board of Trustees, March 24, 1997

MASTER'S PROGRAM IN LIFE SPAN CARE AND ADMINISTRATION -LSCA-

VISION

The Master's Program in Life Span Care and Administration advances the fields of education and caregiving throughout the lifespan. LSCA graduates outstanding practitioners and administrators who are leaders and mentors in their fields. LSCA enhances students' skills, values, and professional identities. The program and its graduates constructively change society through their commitment, ethical standards, respect for others, and demand for quality care and education.

MISSION

- * To provide innovative education and learning experiences in unique formats for professionals who work in specialized fields that have been overlooked and traditionally underserved.
- * To demonstrate and develop leadership committed to bringing about constructive societal change.



PRESIDENT'S MESSAGE

A wit recently commented that the future isn't what it used to be.

Certainly this is true of our expectations about the future given an accelerating rate of change, our exosomatic evolution via technology, and the global and multi-cultural diversity of our contemporary society. In your professional careers you will often find wonderful opportunities -- initially appearing as insoluble problems -- which you will creatively and constructively solve, always providing an exemplary model of the ethical, caring and competent professional. We believe that the educational opportunities offered in the **Master's Program in Life Span Care and Administration** will provide the foundation on which you will build an effective and rewarding career in your chosen profession.

Ovid Lewis, J.S.D.
President
Nova Southeastern University



NEW EDUCATION PROVOST'S PROFILE

Dr. H. Wells Singleton

Dr. H. Wells Singleton has been named the new Graduate Education Provost/Dean for the Fischler Center for the Advancement of Education. Singleton comes to NSU from Ohio University, where he served as Dean of the College of Education. Prior to that, he served as Associate Dean of Teacher Education at the University of Wyoming.

He holds a B.A. in social studies from the University of Wyoming, a M.A. in administration and American History from Southern Methodist University, and a Ph.D. in curriculum/administration from Stanford University.

While at Ohio University, Singleton was involved in several major technology initiatives linking urban and rural schools and Colleges of Education. He participated in securing more than \$5 million in grants supporting public education technology efforts.

Singleton is a nationally recognized leader in fostering partnerships involving higher education and public schools, which benefit children and families. As an advocate for children, Singleton was the only higher education representative to serve on the Steering Committee of the Ohio Coalition for Equity and Adequacy of School Funding.

“I am very excited to be associated with the Fischler Center for the Advancement of Education at NSU,” said Singleton, also a resident of Plantation. “Given its strong reputation in distance learning, I consider it a privilege to work with such an excellent faculty and staff who are committed to applying new technologies to the teaching and learning process.”



PROGRAM DEAN'S WELCOME

*"The strongest principle of human growth lies in human choice."
...Alexander Chase*

Your attendance at this year's Summer Instruction in Fort Lauderdale has been long anticipated by the faculty and staff here at the University. As it must be for you, it is an exciting and emotional time for us because finally we will meet face to face! Though we have been in regular communication for the past number of months, this will be our first "live contact" since you entered the master's degree program.

The focus for this year's Summer Instruction will be on issues in public policy and the profession. The students in Applied Addiction Studies will focus on issues in family and group counseling. As is done each year, we will also celebrate the accomplishments and successes of our students, graduates, and faculty. We will explore the challenges and complexities involved in developing the necessary insight and leadership required to better educate and care for the other members of our respective communities. To enable us to better achieve these objectives, we have selected some of our outstanding graduates, leaders from our fields, and NSU faculty to share their expertise, knowledge, and visions.

While the emphasis of the instruction will be on the topics mentioned above, another clear program agenda will be to foster a greater understanding and appreciation of the various professional disciplines represented. Each of these program specializations make a significant and invaluable contribution to the welfare of the human life span.

As we evaluate the overall quality of education and care provided children, youth, families and the elderly in our world, it is clear that innovation and change are greatly needed. This change will not and cannot occur without competent leadership. The mission of this graduate degree program is to develop, mentor, and nurture such leadership.

To date, there have been more than 1000 program graduates. These individuals have continued to be very successful in making significant contributions to the welfare of society and to their communities.

The Summer Instruction provides a rare opportunity for sharing experiences and networking with

people committed to societal improvement in the same way that you are. We encourage you to take advantage of this one-time experience.

You have information on each program participant, and provisions have been made for both formal and informal interaction. Make use of this time to enrich yourself by establishing contacts and friendships that will extend far beyond these short few days.

Much time and thought have been devoted to planning and designing these activities. It is our hope that you will find the presentations, classes, and discussions valuable and insightful.

Each of you has embarked on a pioneering road in your selection of this speciality of the Master's Program in Life Span Care and Administration and its nontraditional format of directed study. Your enrollment in the program is an indication of your belief in the mission of Nova Southeastern University and your desire to create constructive change through proactive leadership and committed involvement.

Norman W. Powell, Ed.D.
Program Dean
Master's Program in Life Span Care
and Administration

FACULTY FOR THE SUMMER INSTRUCTION CLASSES



Judith Bartmann, Ph.D.

The Profession and Public Policy in Elder
Care Administration



Adela Beckerman, Ph.D.

The Profession and Public Policy
in Family Support Services



J. Kate Howze, Ed.D.

The Profession and Public Policy
in Early Childhood Education
Administration



Mark Krueger, Ph.D.

The Profession and Public Policy in
Child and Youth Care Administration



Carmine Pecoraro, MS, CAP

Substance Abuse Counseling in
Applied Addiction Studies
(Group Theory and Practice)



Margo F. Weiss, Ph.D.

Substance Abuse Counseling in Applied
Addiction Studies (Family Systems)



OPENING KEYNOTE SPEAKER

Ralph E. Kelly, Ed.D.

Dr. Ralph E. Kelly is currently the Commissioner of the Department of Juvenile Justice for the Commonwealth of Kentucky. He is also an Adjunct Professor in Nova Southeastern University's Master's Program in Life Span Care and Administration, and teaches the Issues in Criminal Justice for Substance Abuse Counselors course for the Applied Addiction Studies specialization.

Dr. Kelly has an extensive background in child welfare and juvenile justice services, having worked in a variety of capacities with at-risk children, youth, and families for the past thirty years. Dr. Kelly has held a number of posts in residential and community-based settings, after beginning his career as a youth worker in a residential treatment center. He rose to the position of Executive Director of a multi-functional child welfare and family services organization.

During the early 80's, he served as Executive Deputy Commissioner of the New York City Department of Juvenile Justice. He joined the New York State Division of Parole in 1985 and held a number of supervisory and administrative positions. His last assignment was as Director of the Aftercare Program for boot camp graduates, the largest and most extensive such program in the nation.

In September 1994, he joined the New Jersey Department of Human Services as Director of the Division of Juvenile Services, a program serving more than 750 delinquent youngsters in 40 residential and day treatment programs.

Dr. Kelly has been very instrumental in the movement to professionalize the role of the child and youth care worker. He was the first President of the New York State Association of Child and Youth Care Workers and led that organization to develop the first statewide certification program for child and youth care professionals. He was the founding President of the NOCCWA (National Organization of Child Care Workers Association) in the early 80's, further helping to identify the need for the professionalization of the child and youth care worker.

Dr. Kelly continues to be active with the Inter-Association Child Care Conference, Inc. (IACCC), a regional training group that has organized an annual training conference for the past twenty-one years.

Dr. Kelly has spoken at a number of conferences and seminars in North America and has achieved an international reputation in the field of child and youth care work.

He received his bachelors degree in Sociology and masters degree in Child Care and Child Development from the University of Pittsburgh. He received his doctorate degree in Education from Nova Southeastern University in Florida. Dr. Kelly is married to Sandra E. Kelly, and they have one son, Jonathon, a college junior.



DISTINGUISHED EXPERT IN PUBLIC POLICY

Deborah Wasserman Schultz, M.S.

Representative Deborah Wasserman Schultz was first elected to the Florida House of Representatives in November, 1992, representing House District 97. The district runs through most of western Broward County, including parts of Davie, Cooper City, Pembroke Pines, Miramar, Sunrise, Tamarac, Lauderhill and all of Weston and Boneventure. In 1992, she won a six-way Democratic primary with 53% of the vote, avoiding a run-off. She went on to defeat her Republican opposition with 64% of the vote. Twenty-six years old at the time, she has the distinction of being the youngest woman ever elected to the Florida Legislature. In 1994, she was reelected without opposition.

She currently serves as a member of the House Education Appropriations Committee, the House Utilities & Communications Committee, and the House Health Care Standards & Regulatory Reform Committee. In addition, she serves as the Chair of the Democratic Caucus Message Committee, and is also a member of the Campaign Committee. Education, children's issues, insurance law, and gender equity have been the major focus of her personal legislative agenda.

Recognizing her leadership abilities, the Speaker of the House appointed Representative Wasserman Schultz to the Florida Distance Learning Network Board of Directors, the Southern Regional Education Board Legislative Advisory Council, the Florida Supreme Court Gender Bias Study Implementation Commission, the Florida Education Facilities Study Committee, as an Alternate Member of the Preemption and State/Federal Affairs Committee of the Southern Legislative Conference and as a member of the Education Committee of the National Conference of State Legislatures. She was appointed by the Commissioner of Education to the "Classrooms First" Task Force. Additionally, she was one of only 35 elected officials nationwide to be selected in the inaugural class of Flemming Fellows by the Flemming Fellows Leadership Institute, Center for Policy Alternatives. Locally, her appointments include the Broward Education Planning Initiative, the Broward County School Board Blue Ribbon Committee and the Westside Regional Medical Center Board of Trustees.

Representative Wasserman Schultz has been an active participant in the community as well. Currently, she serves as a Vice-President of the Gwen Cherry Chapter of the Women's Political Caucus, as a Community Representative on the Hawkes Bluff Elementary School Shared Decision

Making Council, as the Secretary of the Hawkes Bluff Parcel A Homeowner's Association, as an Advisory Board Member of the United Hearing and Deaf Services and Dismas Charities, as an Advisory Board Member of the WLRN "Ready to Learn" Program, as a member of the Women's Chamber of Commerce of Broward County, and as a member of the Miramar/Pembroke Chamber of Commerce. She is a former Vice-President of the Broward County Young Democrats and served as Secretary on the Board of Directors of the Young Leadership Council of the Jewish Federation of Greater Ft. Lauderdale.

Representative Wasserman Schultz has been honored by the Florida Perinatal Association with the 1996 Maternal Child Health Award and the Weizmann Institute Of Science as a "Woman of Vision." She has been honored with "The Rosemary Barkett Award" in 1995 for outstanding demonstrated commitment to equal justice under the law by The Academy Of Florida Trial Lawyers. She has also been honored as the "Outstanding Legislator for 1994" by the Florida Federation of Business and Professional Women, as "Woman of the Year" for 1994 by AMIT Women, and as Freshman "Friend of Education" by the Broward FTP - NEA, as a "Quality Floridian" by the Florida League of Cities and for "Outstanding Advocacy for the Families of Florida" by the Dade County Psychological Association. In 1993, she was honored for "Outstanding Legislative Service" by the Florida Association of Women Lawyers; as "Outstanding Freshman Legislator" by the Florida Women's Political Caucus; with the "Ray Lisanti Memorial Human Rights Award" by GUARD; as "Trailblazer of the Year" by Broward Young Democrats; with the "Giraffe Award" by WAMM for "sticking her neck out for women's issues"; and with the "Outstanding Leadership Award" by the Broward Community College Chapter of the Florida Association of Community Colleges.

Additional highlights include recognition by Florida Trend magazine as one of twelve future leaders in Florida; Named as one of South Florida magazine's "Six Most Unstoppable Women"; Featured in a May, 1993 "Closeup" segment on NBC Nightly News for her work on the "Gender/Minority Balance" bill.

Professionally, Representative Wasserman Schultz currently serves as a Public Policy Curriculum Specialist at Nova Southeastern University. Prior to her election, she served for four years as the Legislative Aide to State Representative Peter Deutsch, now a Member of Congress. She also teaches Political Science as an Adjunct Instructor at Broward Community College.

Representative Wasserman Schultz is originally from Melville, New York. She was educated at the University of Florida in Gainesville, where she received her Bachelor's and Master's Degrees in Political Science. She lives in Davie with her husband Steven Schultz and their two dogs, Molly and Suzy and a cat, Rusty.



DISTINGUISHED GUEST LECTURER: PROFESSIONAL ISSUES IN LEADERSHIP

Jethro Toomer, Ph.D.

Dr. Jethro Toomer currently serves as Professor and Director of the Graduate Program in Community Counseling, Division of Psycho-Educational Services, at Florida International University, Miami, Florida. He is also a senior faculty member of Nova Southeastern University's Ed.D. Program in Child and Youth Studies, and annual Summer Instruction presenter on leadership for the Master's Program in Life Span Care and Administration.

Dr. Toomer formerly served as Associate Professor of Psychology and Education at Florida Memorial College. He provides consultation to numerous agencies and organizations throughout the United States, is a frequent presenter at national conferences, and is the author of numerous publications.

He obtained his B.A. in Psychology from Morehouse College, and the M.Ed. and Ph.D. in Psychology from Temple University.

SYMPOSIUM ON ISSUES IN PUBLIC POLICY IN LIFE SPAN CARE



The Honorable
Deborah Wasserman Schultz

Florida House of Representatives
Davie, Florida



Mark Krueger

Acting Dean
Center for Community Outreach
University of Wisconsin/Milwaukee
Adjunct Professor in Child and Youth
Care Administration Specialization
Nova Southeastern University
Fort Lauderdale, Florida



Judith Bartmann

Program Professor for the Elder Care
Administration Specialization
Nova Southeastern University
Fort Lauderdale, Florida



Richard Goldman

Distinguished Program Professor Emeritus
Fischler Center for the Advancement of
Education
Nova Southeastern University
Fort Lauderdale, Florida



Christina Zawisza

Legal Director
Children First Project
Nova Southeastern University
Fort Lauderdale, Florida



Robert (Bob) Parks
Moderator

Program Professor
Graduate Teacher Education Program
Nova Southeastern University
Elected member of School Board of
Broward County
Fort Lauderdale, Florida

ANNOUNCEMENTS

ATTENDANCE EXPECTATIONS

Summer Instruction is an academic requirement for the completion of the program. Attendance is required at all sessions and events. Attendance will be recorded in order to ensure that you receive the appropriate credit on your transcript. **Please note: In order to receive credit, you must sign the attendance roster at each session and event.**

INSTRUCTION CERTIFICATE

Each person is required to pick up his/her own certificate of attendance **upon completion and submission of the evaluation form** immediately following the closing session on **Saturday at 2.00 p.m.**

SMOKING

Consistent with our concern for the environment and the health of others, this will be a **No Smoking Week**. Please do not smoke at any instruction session or event. Smoking will be permitted only in the public areas of the hotel.

LSCA NOVA PROGRAM OFFICE

The Nova Office will be located in the **Executive Boardroom** starting Friday, July 25, until Saturday, August 2. The Office will be open each day, one-half hour before the opening of the morning session, and for one-half hour after the close of the last session.

MESSAGE BOARD

A Message Board will be located at the Nova Office.

ANNOUNCEMENTS (continued)

COMPUTER LAB

Computers will be available for all students and faculty in the computer lab in the hotel from 5:00pm to 12:00 midnight from July 26 through August 1 and August 4 through August 8. The Computer lab will be located in the Key West Room.

PRACTICUM FACULTY

Take advantage of every opportunity to become acquainted with practicum faculty members who are at Summer Instruction. Advisors, however, cannot accept, review, or approve practicum work during the Summer Instruction week.

CHECKOUT PROCEDURES

Checkout time is 12 noon. A storage area for luggage will be available on Saturday, August 2 and August 9, 1997.

SPECIAL EVENTS

THURSDAY, JULY 24, 1997 Faculty Meeting -Horvitz Admin. Bldg. -LaBonte Boardroom	9:00 a.m. - 5:00 p.m. NSU Campus
FRIDAY, JULY 25, 1997 Faculty Meeting -Horvitz Admin. Bldg. -LaBonte Boardroom Faculty Computer Training -Sonken Building	9:00 a.m. - 12:00 p.m. NSU Campus 1:00 p.m. - 5:00 p.m. NSU Campus
SATURDAY, JULY 26, 1997 Meet with future modules	1:30 p.m. - 3:30 p.m.
SATURDAY, JULY 26, 1997 Practicum Faculty Meeting	4:00 p.m. - 6:00 p.m. Chairman's Boardroom
SATURDAY, JULY 26, 1997 Annual Faculty Dinner	6:30 p.m. - 8:30 p.m. La Cucina
SUNDAY, JULY 27, 1997 Faculty and Staff Reception	6:30 p.m. - 8:00 p.m. Norman Powell's Suite
TUESDAY, JULY 29, 1997 Day on Campus	8:00 a.m. - 5:00 p.m.
WEDNESDAY, JULY 30, 1997 Computer Instruction	9:00 a.m. - 5:00 p.m. Parker Bldg. and Sonken Bldg. Nova Campus
FRIDAY, AUGUST 1, 1997 Symposium	2:00 p.m. - 4:00 p.m. Amphitheater

FRIDAY, JULY 25, 1997

3:00 - 5:00 p.m.
Pre-Function Desk

Registration (refreshments)

5:00 - 6:00 p.m.

Dinner on your own

The Profession and Public Policy (Family Systems - for Applied Addiction Studies Students)

6:00 - 9:00 p.m.

Class Session I

Marathon

Early Childhood Ed. students-Kate Howze

Sanibel

Child and Youth Care students-Mark Krueger

President's Boardroom

Family Support students-Adela Beckerman

Everglades

Elder Care students-Judith Bartmann

Naples

Applied Addiction students-Margo Weiss

SATURDAY, JULY 26, 1997

<p>8:00 - 9:00 a.m. Amphitheater Foyer</p>	<p>Breakfast Reception All Students, Faculty and Staff</p>
<p>9:30 - 10:30 a.m. Amphitheater</p>	<p>Introduction to Summer Instruction Official Opening Activities Program Dean's Welcome</p> <p>Education Provost's Welcome</p> <p>Summer Instruction Video Walk-through, etc.</p>
<p>10:30 - 10:45 a.m. Amphitheater Foyer</p>	<p>Break</p>
<p>10:45 - 11:30 a.m. Amphitheater</p>	<p>Keynote Speaker</p>
<p>11:30 a.m. - 12:30 p.m.</p>	<p>Questions and Answers</p>
<p>12:30 - 1:30 p.m.</p>	<p>Lunch on your own</p>
<p>1:30 - 3:30 p.m.</p>	<p>Future Modules</p>

Faculty Sessions with Students - Future Modules

Naples	Cohort 79E	Administration	Kate Howze
Everglades	Cohort 80R	Administration	Ralph Hogges
President's Boardroom	Cohort 17F	Leadership	Peter Gabor
Sanibel	Cohort 80E	Management	Michael Forster
Sanibel	Cohort 81R	Management	Michael Forster
Sanibel	Cohort 5L	Management	Michael Forster
Marathon	Cohort 18F	Family Systems	Carmen Nicholas
Biscayne	Cohort 81E	Development	Elaine Van Lue
Key Largo	Cohort 82R	Therapeutic	Nicholas Smiar
Registry Boardroom	Cohort 19F	Development	Anne Pesacov
Coral Springs	Cohort 6L	Foundations	Carol Matheis-Kraft

SUNDAY, JULY 27, 1997

7:30 - 8:30 a.m.
Amphitheater Foyer

Continental Breakfast

Practicum Day

8:30 - 9:30 a.m.
Amphitheater

Introduction to Practicum and Practicum Day
- **Adela Beckerman**

9:30 - 10:30 a.m.
Amphitheater

Graduate Practicum Presentations

10:30 - 10:45 a.m.
Amphitheater Foyer

Break

10:45 - 11:30 a.m.
Amphitheater

Questions and Answer Period

11:30 a.m. - 1:00 p.m.

Lunch on your own

Practicum Skills Sessions with Faculty

1:00 - 2:00 p.m.

Practicum Skills Session I

Developing and documenting the problem

Key Largo

Cohort 5L and 6L

Judith Bartmann

Biscayne

Cohort 80R

Mark Krueger

Marathon

Cohort 81R

Nicholas Smiar

Sanibel

Cohort 2A, 3A and 4A

Adela Beckerman

President's Boardroom

Cohort 17F

Peter Gabor

Chairman's Boardroom

Cohort 18F and 19F

Carmen Nicholas

Naples

Cohort 79E

Michael Forster

Registry Boardroom

Cohort 80E and 81E

Kate Howze

2:00 - 2:15 p.m.

Break

SUNDAY, JULY 27, 1997 (continued)

2:15 - 3:15 p.m.

Practicum Skills Session II

Developing goals and objectives, and the Solutions Strategy

Key Largo	Cohort 5L and 6L	Judith Bartmann
Biscayne	Cohort 80R	Mark Krueger
Marathon	Cohort 81R	Nicholas Smiar
Sanibel	Cohort 2A, 3A and 4A	Adela Beckerman
President's Boardroom	Cohort 17F	Peter Gabor
Chairman's Boardroom	Cohort 18F and 19F	Carmen Nicholas
Naples	Cohort 79E	Michael Forster
Registry Boardroom	Cohort 80E and 81E	Kate Howze

3:15 - 3:30 p.m.
Atrium

Break

3:30 - 4:30p.m.

Practicum Skills Session III

Human Subjects Review

Key Largo	Cohort 5L and 6L	Judith Bartmann
Biscayne	Cohort 80R	Mark Krueger
Marathon	Cohort 81R	Nicholas Smiar
Sanibel	Cohort 2A, 3A and 4A	Adela Beckerman
President's Boardroom	Cohort 17F	Peter Gabor
Chairman's Boardroom	Cohort 18F and 19F	Carmen Nicholas
Naples	Cohort 79E	Michael Forster
Registry Boardroom	Cohort 80E and 81E	Kate Howze

MONDAY, JULY 28, 1997

7:30 - 8:00 a.m.
Atrium

Continental Breakfast

The Profession and Public Policy (Family Systems -for Applied Addiction Studies Students)

8:00 - 10:00 a.m.

Class Session II

Naples

Early Childhood Ed. students-Kate Howze

Everglades

Child and Youth Care students-Mark Krueger

President's Boardroom

Family Support students-Adela Beckerman

Sanibel

Elder Care students-Judith Bartmann

Marathon

Applied Addiction students-Margo Weiss

10:00 - 10:30 a.m.
Atrium

Break

10:30 a.m. - 12:30 p.m.

Class Session III

Naples

Early Childhood Ed. students-Kate Howze

Everglades

Child and Youth Care students-Mark Krueger

President's Boardroom

Family Support students-Adela Beckerman

Sanibel

Elder Care students-Judith Bartmann

Marathon

Applied Addiction students-Margo Weiss

12:30 - 2:00 p.m.

Lunch on your own

MONDAY, JULY 28, 1997 (continued)

2:00 - 3:30 p.m.

Class Session IV

Naples

Early Childhood Ed. students-Kate Howze

Everglades

Child and Youth Care students-Mark Krueger

President's Boardroom

Family Support students-Adela Beckerman

Sanibel

Elder Care students-Judith Bartmann

Marathon

Applied Addiction students-Margo Weiss

3:30 - 3:45 p.m.

Break

Atrium

3:45 - 5:00 p.m.

Class Session V

Naples

Early Childhood Ed. students-Kate Howze

Everglades

Child and Youth Care students-Mark Krueger

President's Boardroom

Family Support students-Adela Beckerman

Sanibel

Elder Care students-Judith Bartmann

Marathon

Applied Addiction students-Margo Weiss

TUESDAY, JULY 29, 1997

7:30 - 8:00 a.m.
Outside Players

Continental Breakfast

Day On Campus

8:00 a.m.
Outside Players

Board bus for ride to main campus

9:00 - 10:30 a.m.
Mailman - Hollywood Building
Auditorium (second floor)

Main Campus Orientation
Video - NSU overview
-Norman Powell and Program Professors-LSCA

Nova Southeastern University's Vision
-President Ovid Lewis, J.S.D.

10:30 - 11:30 a.m.
Registrar's Office/Admin Bldg.

Photo Identification Cards

11:30 a.m. - 1:00 p.m.

Lunch at Rosenthal Campus Cafeteria

1:00 - 2:00 p.m.
Mailman - Hollywood Building
Auditorium (second floor)

Distance Library Services Orientation
-Paul Pival
Distance Library Services

2:00 - 4:00 p.m.
Parker Bldg.
Microcomputer Labs
(2nd & 3rd Floor)

1. Introduction to NSU Distance Library Services.
2. Instruction in the use of Distance Library Services
3. Visits of Main Campus sites and facilities.

5:00 p.m.

Board bus for return to hotel
in front of Mailman - Hollywood Building

WEDNESDAY, JULY 30, 1997

7:30-8:00 a.m.
Outside Players

Continental Breakfast

Computer Instruction On Campus

8:00 a.m.
Outside Players

Board bus for ride to main campus

9:00 - 5:00 p.m.
Nova Campus
Parker Bldg. & Sonken Bldg.

COMPUTER INSTRUCTION
-Phyllis M. Olmstead and Staff

5:00 p.m.

**Board bus for return to hotel
in front of Parker Building**

THURSDAY, JULY 31, 1997

7:30 - 8:00 a.m. Amphitheater Foyer	Continental Breakfast
The Profession and Public Policy	(Family Systems - for Applied Addiction Studies Students)
8:00 - 10:00 a.m. Amphitheater	Leadership In The Field - Jethro Toomer ● All Students
10:00 - 10:30 a.m. Amphitheater Foyer	Break
10:30 a.m. - 12:30 p.m. Amphitheater	Continue Leadership In The Field
12:30 - 2:00 p.m.	Lunch on your own
2:00 - 5:00 p.m.	Class Session VI
Naples	Early Childhood Ed. students-Kate Howze
Everglades	Child and Youth Care students-Mark Krueger
President's Boardroom	Family Support students-Adela Beckerman
Sanibel	Elder Care students-Judith Bartmann
Marathon	Applied Addiction students-Margo Weiss

FRIDAY, AUGUST 1, 1997

7:30 - 8:00 a.m. Atrium	Continental Breakfast
The Profession and Public Policy	(Family Systems -for Applied Addiction Studies Students)
8:00 - 10:00 a.m.	Class Session VII
Naples	Early Childhood Ed. students-Kate Howze
Everglades	Child and Youth Care students-Mark Krueger
President's Boardroom	Family Support students-Adela Beckerman
Sanibel	Elder Care students-Judith Bartmann
Marathon	Applied Addiction students-Margo Weiss
10:00 - 10:30 a.m. Atrium	Break
10:30 - 12:30 p.m.	Class Session VIII
Naples	Early Childhood Ed. students-Kate Howze
Everglades	Child and Youth Care students-Mark Krueger
President's Boardroom	Family Support students-Adela Beckerman
Sanibel	Elder Care students-Judith Bartmann
Marathon	Applied Addiction students-Margo Weiss
12:30 - 2:00 p.m.	Lunch on your own
2:00 - 4:00 p.m. Amphitheater	SYMPOSIUM

SATURDAY, AUGUST 2, 1997

7:30 - 8:30 a.m.
Atrium

Continental Breakfast

The Profession and Public Policy (Family Systems -for Applied Addiction Studies Students)

8:30 - 11:00 a.m.

Class Session IX

Naples

Early Childhood Ed. students-Kate Howze

Everglades

Child and Youth Care students-Mark Krueger

President's Boardroom

Family Support students-Adela Beckerman

Sanibel

Elder Care students-Judith Bartmann

Marathon

Applied Addiction students-Margo Weiss

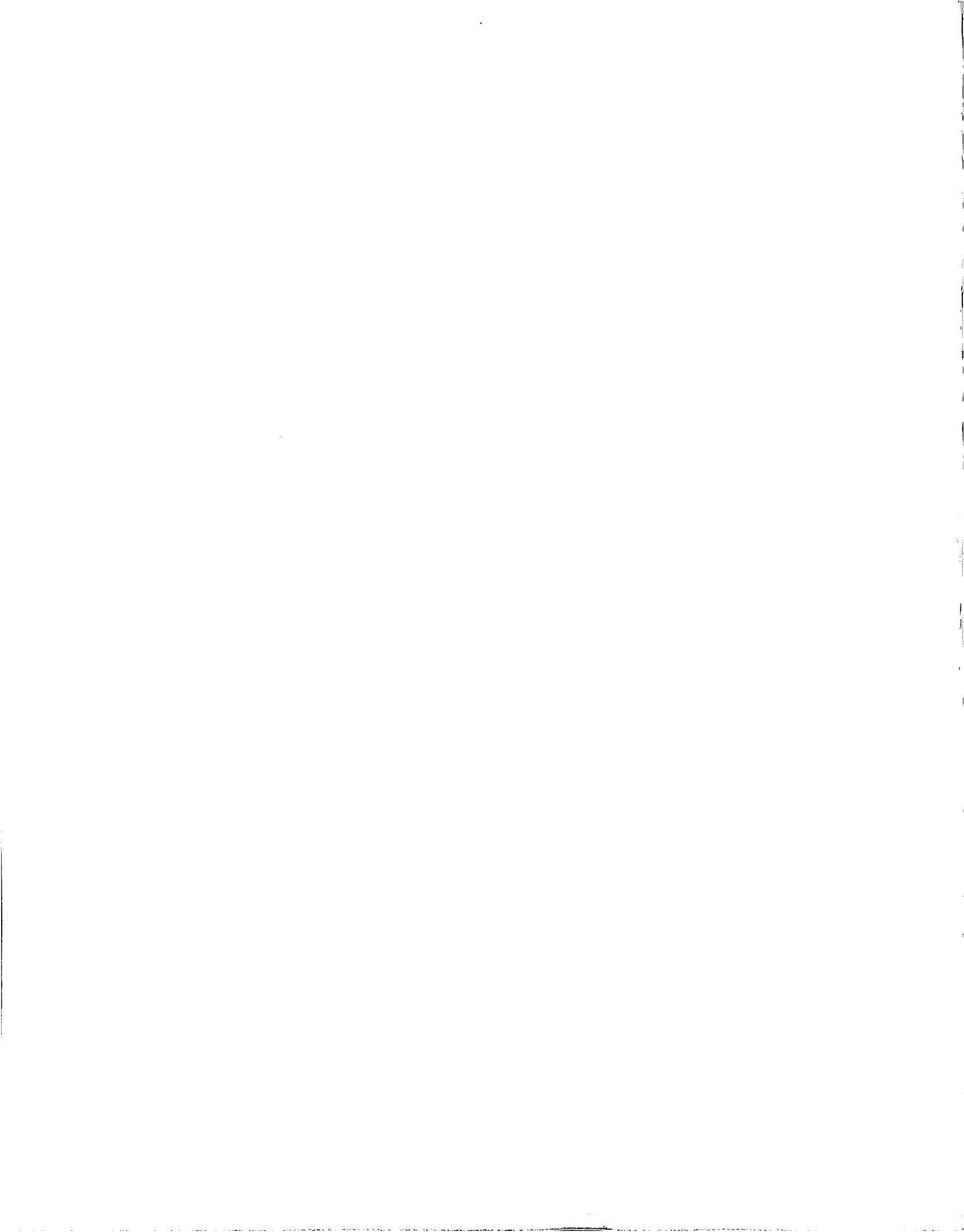
11:00 - 11:30 a.m.
Atrium

Break

11:30 a.m. - 2:00 p.m.
Grand A

Conclusion of Summer Instruction

- Luncheon
- Round table group reports
- Remarks - President Ovid Lewis
- Conferring of certificates (To all students except Applied Addiction Studies)



**FOR
APPLIED ADDICTION STUDIES STUDENTS ONLY**

Group Theory and Practice

MONDAY, AUGUST 4, 1997

7:30 - 8:00 a.m.
Biscayne

Continental Breakfast

Group Theory and Practice

8:00 - 10:00 a.m.
Biscayne

Class Session I
-Introduction to Group

10:00 - 10:30 a.m.
Biscayne

Break

10:30 a.m. - 12:30 p.m.
Biscayne

Class Session II
-Process Recording

12:30 - 2:00 p.m.

Lunch on your own

2:00 - 3:30 p.m.
Biscayne

Class Session III
-Theories of Group Work

3:30 - 4:00 p.m.
Biscayne

Break

4:00 - 5:00 p.m.
Biscayne

Class Session IV
-Termination

TUESDAY, AUGUST 5, 1997

7:30 - 8:00 a.m.
Biscayne

Continental Breakfast

Group Theory Practice

8:00 - 10:00 a.m.
Biscayne

Class Session V
-Curative Mechanisms in Group

10:00 - 10:30 a.m.
Biscayne

Break

10:30 a.m. - 12:30 p.m.
Biscayne

Class Session VI
-Curative Mechanisms continued

12:30 - 2:00 p.m.

Lunch on your own

2:00 - 4:00 p.m.
Biscayne

Class Session VII
-What is Process?

WEDNESDAY, AUGUST 6, 1997

7:30 - 8:00 a.m.
Biscayne

Continental Breakfast

Group Theory and Practice

8:00 - 10:00 a.m.
Biscayne

Class Session VIII
-Present Process Recordings

10:00 - 10:30 a.m.
Biscayne

Break

10:30 a.m. - 12:30 p.m.
Biscayne

Class Session IX
-Problem Patients in a Group

12:30 - 2:00 p.m.

Lunch on your own

2:00 - 4:00 p.m.
Biscayne

Class Session X
-Groups with Addicts

4:00 - 4:30 p.m.
Biscayne

Break

4:30 - 6:00 p.m.
Biscayne

-Groups with Addicts continued

THURSDAY, AUGUST 7, 1997

7:30 - 8:00 a.m.
Biscayne

Continental Breakfast

Group Theory and Practice

8:00 - 10:00 a.m.
Biscayne

Class Session XI
-Logotherapy and Addiction

10:00 - 10:30 a.m.
Biscayne

Break

10:30 a.m. - 12:30 p.m.
Biscayne

Class Session XII
-Ethics

12:30 - 2:00 p.m.

Lunch on your own

2:00 - 3:30 p.m.
Biscayne

Class Session XIII
-Transference and Countertransference

3:30 - 4:00 p.m.
Biscayne

Break

4:00 - 5:00 p.m.

-Transference continued

FRIDAY, AUGUST 8, 1997

7:30 - 8:00 a.m.
Biscayne

Continental Breakfast

Group Theory and Practice

8:00 - 10:00 a.m.
Biscayne

Class Presentations
-Theoretical Approaches

10:00 - 10:30 a.m.
Biscayne

Break

10:30 a.m. - 12:30 p.m.
Biscayne

Class Presentations
-Theoretical Approaches

12:30 - 2:00 p.m.

Lunch on your own

2:00 - 3:30 p.m.
Biscayne

Class Presentations
-Theoretical Approaches

3:30 - 4:00 p.m.
Biscayne

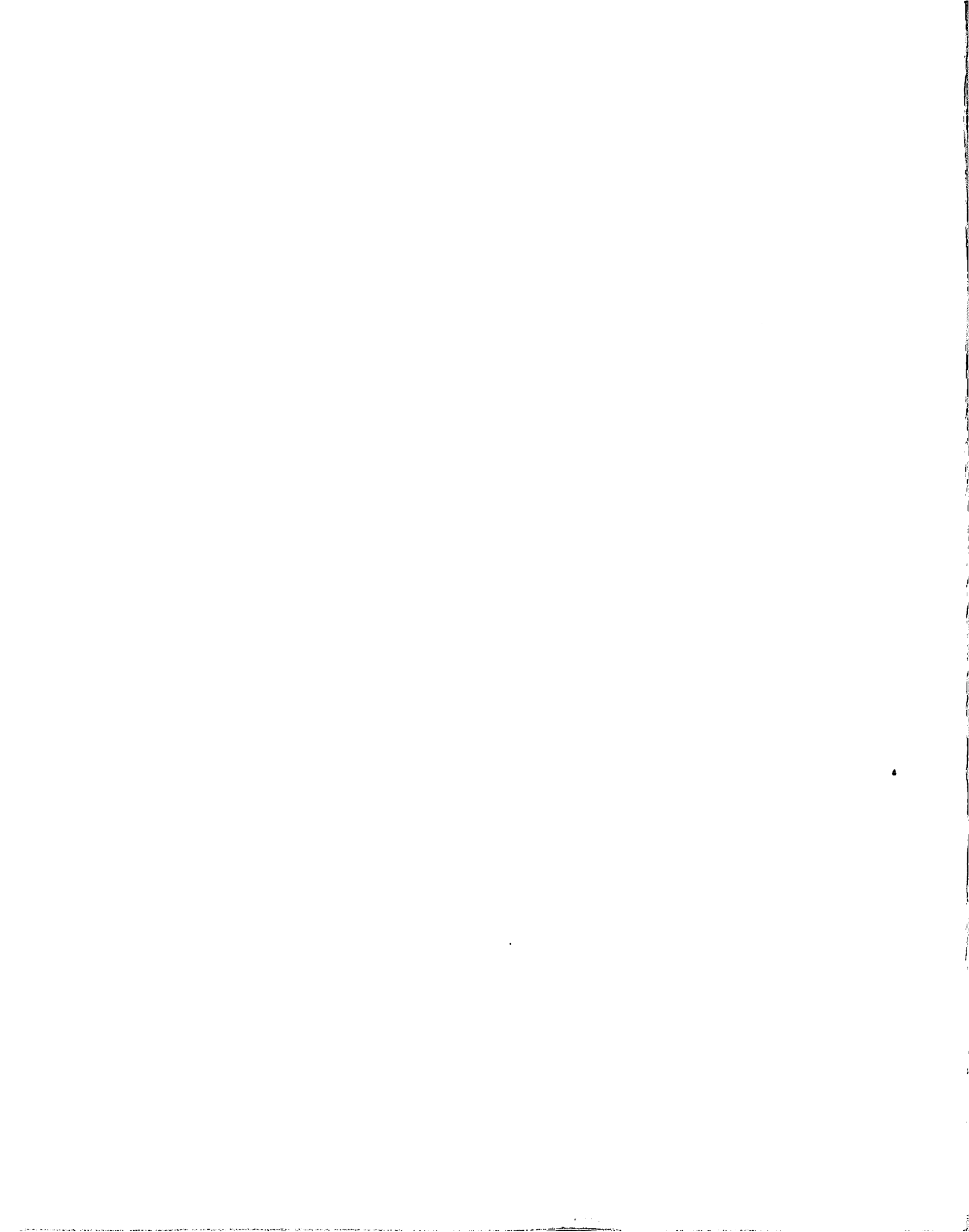
Break

4:00 - 5:00 p.m.
Biscayne

Class Presentations
-Theoretical Approaches

SATURDAY, AUGUST 9, 1997

8:15 a.m. Outside Players	Board bus for ride to main campus
8:30 - 9:00 a.m. LaBonte Boardroom Horvitz Administration Building Nova Southeastern University Campus	Continental Breakfast
9:00 a.m. - 12:30 p.m. LaBonte Boardroom	Post Test Final Group Discussion
12:30 - 1:30 p.m. LaBonte Boardroom	Closing Luncheon Conferring of Certificates
2:00 p.m.	Board bus for return to hotel



FACULTY AND STAFF

Master's Program in Life Span Care and Administration

JUDITH BARTMANN

Program Professor
Elder Care Administration
B.S. Colorado State University
M.A. University of Northern Colorado
Ph.D. University of Northern Colorado

PETER GABOR

Adjunct Professor
Leadership and Family Support Services
B.A. McGill University
B.S.W. McGill University
M.S.W. McGill University
Ph.D. Arizona State University

ADELA BECKERMAN

Program Professor
Family Support Studies and
Director of Practicums
B.S. State University of New York at
Stony Brook
M.S.W. State University of New York
at Stony Brook
Ph.D. State University of New York at
Albany

RICHARD GOLDMAN

Distinguished Program Professor Emeritus
Fischler Center for the Advancement of
Education
B.A. University of Pittsburgh
M.Ed. University of Pittsburgh
Ph.D. University of Pittsburgh

CAROLE BENEDICT

Coordinator of Marketing
Fischler Center for the Advancement of
Education

ANTOINETTE HEPPLER

Director
Center for Media and Technology
B.S. Nova Southeastern University
M.S. Nova Southeastern University

MICHAEL FORSTER

Adjunct Professor
Child and Youth Care, Elder Care,
Early Childhood Management
B.A. Louisiana State University
M.S.W. University of Illinois
Ph.D. University of Massachusetts

RALPH HOGGES

Program Professor
Child and Youth Care Administration,
and Associate Director
B.S. Tuskegee University
M.Ed. Tuskegee University
Ed.D. Nova Southeastern University

KATE HOWZE
Program Professor
Early Childhood Education Administration
B.S. Ohio State University
M.S. Nova Southeastern University
Ed.D. Nova Southeastern University

MARK KRUEGER
Adjunct Professor
The Profession and Public Policy
in Child and Youth Care Administration
B.S. University of Wisconsin
M.S. University of Wisconsin
Ph.D. University of Wisconsin

FORD H. KURAMOTO
Practicum Advisor in Applied
Addiction Studies
B.A. University of California
at Los Angeles
M.S.W. San Diego State University
D.S.W. University of Southern California

ABBEY MANBURG
Program Dean
Ed.D. Programs in Education and Technology
A.B. Temple University
M.S. City College of New York
Ed.D. Nova Southeastern University

CAROL MATHEIS-KRAFT
Adjunct Professor
Foundations for Programs in Elder Care
B.S. Spalding University
M.S. University of Kentucky
Ph.D. University of Northern Colorado

CARMEN NICHOLAS
Adjunct Professor
Family Systems
B.S. University of the West Indies, Jamaica
Ph.D. Nova Southeastern University

PATRICIA O'GORMAN
Adjunct Professor
Substance Abuse Counseling
B.A. City College of New York
M.S. City College of New York
Ph.D. Fordham University

PHYLLIS M. OLMSTEAD
Academic Computing Specialist
Office of Technology
Fischler Center for the Advancement of
Education
B.S. University of Florida
M.Ed. University of Central Florida
Ed.D. University of Central Florida

EARL PATTERSON
Adjunct Professor
Professional Development for Substance
Abuse Counselors, Master's Program in Life
Span Care and Administration
Coordinator of Substance Abuse Specialty
Program, Farquhar Center for Undergraduate
Studies
B.A. University of South Florida
M.A. University of South Florida
Ph.D. University of Florida

CARMINE PECORARO
Adjunct Professor
Substance Abuse Counseling
(Group Theory and practice)
B.A. University of South Florida
M.S. Nova Southeastern University
Psy.D. Studies Miami Institute of Psychology

NICHOLAS SMIAR
Adjunct Professor
Foundations for Therapeutic Programs for
Children and Youth
A.B. St. Meinard College
A.M. The University of Chicago
M.S.W. University of Illinois
Ph.D. University of Illinois

ANNE L. PESACOV
Adjunct Professor
Human Growth and Development
B.S. Cornell University
M.S.W. Rutgers University
Ph.D. Union Institute

ELAINE VAN LUE
Adjunct Professor
Foundations of Early Childhood Development
B.A. University of Central Florida
M.A. University of Central Florida
Ed.D. Nova Southeastern University

PAUL PIVAL
Document Delivery Librarian
B.A. State University of New York at
Geneseo
M.L.S. State University of New York at
Buffalo

MARGO F. WEISS
Adjunct Professor of Substance Abuse
Counseling (Family Systems), Master's
Program in Life Span Care and
Administration, Director of M.S. Program in
Family Therapy and Medical Family
Therapy Program, School of Social and
Systemic Studies, Nova Southeastern
University, Florida
B.S. Florida International University
M.S. Barry University
M.S. Nova Southeastern University
Ph.D. Nova Southeastern University

NORMAN W. POWELL
Program Dean
Master's Program in Life Span Care
and Administration
B.A. The American University
M.Ed. The American University
Ed.D. The American University

KIMBERLY RISNEAR
Administrative Assistant

VICKY ZAETLER
Coordinator of Program Operations

SUMMER INSTRUCTION FACULTY AND STAFF

Master's Program in Life Span Care and Administration

- Judith A. Bartmann, Ph.D. Program Professor in the Master's Program in Life Span Care and Administration, Nova Southeastern University, Florida
- Adela Beckerman, Ph.D. Program Professor in the Master's Program in Life Span Care and Administration, and Director of Practicums, Nova Southeastern University, Florida
- Michael Forster, Ph.D. Adjunct Professor of Child and Youth Care, Elder Care, and Early Childhood Management: Legal and Financial Aspects and Program Evaluation, Master's Program in Life Span Care and Administration, Nova Southeastern University, Florida
- Peter Gabor, Ph.D. Adjunct Professor of Leadership & Family Support Services, Master's Program in Life Span Care and Administration, Nova Southeastern University, Florida
- Richard Goldman, Ph.D. Distinguished Program Professor Emeritus, Fischler Center for the Advancement of Education, Nova Southeastern University, Florida
- Ralph Hogges, Ed.D. Program Professor in the Master's Program in Life Span Care and Administration, and Associate Director, Nova Southeastern University, Florida
- Kate Howze, Ed.D. Program Professor in the Master's Program in Life Span Care and Administration, Nova Southeastern University, Florida

SUMMER INSTRUCTION FACULTY AND STAFF (continued)

Mark Krueger, Ph.D.	Adjunct Professor of The Profession and Public Policy in Child and Youth Care, Master's Program in Life Span Care and Administration, Nova Southeastern University, Florida
Ovid C. Lewis, J.S.D.	President, Nova Southeastern University, Florida
Carol Matheis-Kraft, Ph.D.	Foundations for Programs in Elder Care, Master's Program in Life Span Care and Administration, Nova Southeastern University, Florida
Carmen A. Nicholas, Ph.D.	Adjunct Professor of Family Systems, Master's Program in Life Span Care and Administration, Nova Southeastern University, Florida
Phyllis M. Olmstead, Ed.D.	Academic Computing Specialist, Office of Technology, Fischler Center for the Advancement of Education, Nova Southeastern University, Florida
Carmine Pecoraro, M.S.	Adjunct Professor of Substance Abuse Counseling (Group Theory and Practice), Master's Program in Life Span Care and Administration, Nova Southeastern University, Florida
Anne L. Pesacov, Ph.D.	Adjunct Professor of Human Growth and Development: A Transactional Perspective, Master's Program in Life Span Care and Administration, Nova Southeastern University, Florida
Paul Pival, M.L.S.	Document Delivery Librarian, Nova Southeastern University, Florida

SUMMER INSTRUCTION FACULTY AND STAFF (continued)

Norman W. Powell, Ed.D.	Program Dean, Master's Program in Life Span Care and Administration, Nova Southeastern University, Florida
Kimberly Risnear	Administrative Assistant, Master's Program in Life Span Care and Administration, Nova Southeastern University, Florida
Nicholas Smiar, Ph.D.	Adjunct Professor of Foundations for Therapeutic Programs for Children and Youth, Master's Program in Life Span Care and Administration, Nova Southeastern University, Florida
Jethro Toomer, Ph.D.	Professor of Psycho-Educational Services, Florida International University, Miami, Florida
Elaine Van Lue, Ed.D.	Adjunct Professor of Foundations of Early Childhood Development, Master's Program in Life Span Care and Administration, Nova Southeastern University, Florida
Margo F. Weiss, Ph.D.	Adjunct Professor of Substance Abuse Counseling (Family Systems), Master's Program in Life Span Care and Administration, Director of M.S. Program in Family Therapy and Medical Family Therapy Program, School of Social and Systemic Studies, Nova Southeastern University, Florida
Vicky Zaetler	Coordinator of Program Operations, Master's Program in Life Span Care and Administration, Nova Southeastern University, Florida

