

5-2-2018

# Spatiotemporal Variation in Emotional Responses to 2017 Terrorist Attacks in London Using Twitter Data

Ruixue Wang

Follow this and additional works at: [https://scholarworks.gsu.edu/geosciences\\_theses](https://scholarworks.gsu.edu/geosciences_theses)

---

## Recommended Citation

Wang, Ruixue, "Spatiotemporal Variation in Emotional Responses to 2017 Terrorist Attacks in London Using Twitter Data." Thesis, Georgia State University, 2018.  
[https://scholarworks.gsu.edu/geosciences\\_theses/113](https://scholarworks.gsu.edu/geosciences_theses/113)

This Thesis is brought to you for free and open access by the Department of Geosciences at ScholarWorks @ Georgia State University. It has been accepted for inclusion in Geosciences Theses by an authorized administrator of ScholarWorks @ Georgia State University. For more information, please contact [scholarworks@gsu.edu](mailto:scholarworks@gsu.edu).

SPATIOTEMPORAL VARIATION IN EMOTIONAL RESPONSES TO 2017 TERRORIST  
ATTACKS IN LONDON USING TWITTER DATA

by

RUIXUE WANG

Under the Direction of Dajun Dai, PhD

ABSTRACT

Terrorist attacks have a significant impact on human lives. This study examined emotional responses after the terrorist attacks in London in March and June of 2017, respectively. This research extracted tweets related to the two attacks by developing a Python tool interacting with the Twitter Application Program Interface (API). The tweets were analyzed for its negative emotion expression such as sadness. This study then analyzed these negative tweets using the space-time permutation model in SatScan and assessed their variation in space and time. Results suggested two significant clusters of negative tweets after the first attack. These clusters located in the metropolitan area of London and between Manchester and Liverpool within ten days of the attack. The findings may contribute to quick surveillance of emotional responses on the Twitter users.

INDEX WORDS: Terrorist attacks, Emotional responses, Negative tweets, Space-time.

SPATIOTEMPORAL VARIATION IN EMOTIONAL RESPONSES TO 2017 TERRORIST  
ATTACKS IN LONDON USING TWITTER DATA

by

RUIXUE WANG

A Thesis Submitted in Partial Fulfillment of the Requirements for the Degree of

Master of Science

in the College of Arts and Sciences

Georgia State University

2018

Copyright by  
Ruixue Wang  
2018

**SPATIOTEMPORAL VARIATION IN EMOTIONAL RESPONSES TO 2017  
TERRORIST ATTACKS IN LONDON USING TWITTER DATA**

by

RUIXUE WANG

Committee Chair: Dajun Dai

Committee: Jeremy Diem

Lawrence Kiage

Electronic Version Approved:

Office of Graduate Studies

College of Arts and Sciences

Georgia State University

May 2018

## **DEDICATION**

I dedicate this thesis to my parents who have been a great source of inspiration and support. This thesis is also dedicated to my husband who encouraged me to build my motivation towards the world of GIS.

## **ACKNOWLEDGEMENTS**

I would like to convey my gratefulness to my advisor Dr. Dajun Dai, because this work would not have been completed without his help. I sincerely thank Dr. Daniel Deocampo for his guidance and encouragement in writing a proposal in the Research Method class. I also would like to express my gratitude towards my committee members, Dr. Diem and Dr. Kiage, for their suggestions and help.

My thanks and appreciations also go to my colleagues and people who have willingly helped me out with their abilities.

## TABLE OF CONTENTS

<b>ACKNOWLEDGEMENTS .....</b>	<b>V</b>
<b>LIST OF TABLES .....</b>	<b>VIII</b>
<b>LIST OF FIGURES .....</b>	<b>IX</b>
<b>LIST OF ABBREVIATIONS .....</b>	<b>X</b>
<b>1 INTRODUCTION .....</b>	<b>1</b>
<b>1.1 Background .....</b>	<b>1</b>
<b>1.2 Literature Review .....</b>	<b>4</b>
<i>1.2.1 Application of Social Media .....</i>	<i>4</i>
<i>1.2.2 Use of Geospatial Data in Social Media Studies .....</i>	<i>5</i>
<i>1.2.3 General Approach of Studying Emotional Data.....</i>	<i>7</i>
<i>1.2.4 Application of Space-time Analysis.....</i>	<i>9</i>
<i>1.2.5 Importance of Studying Negative Emotional Data in Mental Health .....</i>	<i>11</i>
<i>1.2.6 Rural/Urban Differences in Social Media Adoption and Mental Health..</i>	<i>12</i>
<b>1.3 Research Question and Objectives .....</b>	<b>14</b>
<b>1.4 Significance of this Study.....</b>	<b>14</b>
<b>2 METHODOLOGY .....</b>	<b>16</b>
<b>2.1 Study Area.....</b>	<b>16</b>
<b>2.2 Methods.....</b>	<b>17</b>
<i>2.2.1 Data Collection.....</i>	<i>17</i>



2.2.2	<i>Data Processing</i> .....	19
3	<b>RESULTS</b> .....	24
4	<b>DISCUSSION AND CONCLUSION</b> .....	35
4.1	<b>Tweets, Social Network Usage, and Spoken Language</b> .....	35
4.2	<b>Mental Health and Human Behaviors</b> .....	35
4.3	<b>Mental Health and Rural/Urban Classification</b> .....	36
4.4	<b>Social Media Attention to Various Attacks</b> .....	37
4.5	<b>Limitations</b> .....	38
	<b>REFERENCES</b> .....	40

**LIST OF TABLES**

Table 1. Samples of negative tweets.....	20
Table 2. Rural/urban reclassification in U.K.....	22
Table 3. Number of geotagged tweets in U.K.....	27
Table 4. Summary of geotagged tweets in March (r=75 km) .....	30
Table 5. Description of the first cluster in March.....	30
Table 6. Description of the second cluster in March .....	31
Table 7. Correlation of negative tweet and rural/urban classification.....	34
Table 8. Official language and prevailing social media platforms for top 5 countries having active Twitter accounts .....	35

**LIST OF FIGURES**

Figure 1. Research workflow .....	17
Figure 2. A sample of python script .....	18
Figure 3. Sample tweets retrieved from Twitter.....	19
Figure 4. Process of calculating generic time.....	21
Figure 5. Distribution of geotagged tweets in March .....	24
Figure 6. Distribution of geotagged tweets in June .....	25
Figure 7. Daily number of all relevant tweets in the world.....	25
Figure 8. Daily number of geotagged tweets in the world.....	26
Figure 9. Geotagged tweets in U.K.....	28
Figure 10. Clusters of the attack in March.....	29
Figure 11. Tweets and rural/urban classification in U.K.....	32
Figure 12. Tweets within each classification .....	33
Figure 13. Number of tweets related to the attack in U.K. and Syria.....	37

## LIST OF ABBREVIATIONS

US: United States

EU: European Union.

U.K.: United Kingdom.

GIS: Geographic Information System.

API: Application Programming Interface.

POS: Part of Speech.

SVM: Support Vector Machine.

IDW: Inverse Distance Weighting.

KDE: Kernel Density Estimation.

PTSS: Post Traumatic Stress Syndrome.

# 1 INTRODUCTION

## 1.1 Background

Terrorist attacks affect human lives tremendously, both physically and mentally. Terrorist attacks may be attributed to the foreign terrorist organization (international terrorism) or domestic movements exposed to extremist ideologies of a political, religious, social or environmental nature (Federal Bureau of Investigation, 2018). Terrorism has become a global issue, especially after the September 11 attack in the United States (US) in 2001 (Goldman 2011). In the year of 2016, there was a total of 11,072 terrorist attacks worldwide, accounting for 30 attacks daily. More than 34,676 people died due to terrorism in 2016, while the number was 9,362 in 2006 (Roser, Nagdy et al. 2013).

As terrorism expanded to other countries, Europe has become the target with increasing concerns for the people living there (Barros, Proenca et al. 2007, Draca, Machin et al. 2011, Drakos and Muller 2011, Salerno 2017). As one of the member states in European Union (EU), the United Kingdom (U.K.) had the highest number of terrorist attacks, with a total of 76 separate terrorist attacks in 2016, while the number was 23 in France and 5 in Germany (Statista 2017). Simcox stated that the terrorist attacks in the U.K. would continue since over twenty-three thousand terror suspects lived in the country and government couldn't control the significant amount of domestic threats (Simcox 2017). The detrimental impact that terrorist attacks brought to people were long-term. A study of London bombing terrorist attack in 2005 has suggested that the pregnant woman who lived in northern England and had been exposed to media coverage of terrorist attacks had infants with lower mean birth weight (Nugent, Khashan et al. 2011). Terrorist attacks also had influences on people's behaviors. Stecklov and others observed people's driving behaviors in Israel after the terrorist attack. They found, though, traffic volume declined in both peak and off-

peak hour a few days after terrorist attacks, traffic fatalities increased (Stecklov and Goldstein 2004).

In recent years, many studies have proven that terrorist attacks have threatened public mental health (Boscarino, Galea et al. 2002, Whalley and Brewin 2007, Gruebner, Sykora et al. 2016). Those studies suggested that there was a significant increase of anxiety/depression among a specific group (Boscarino, Galea et al. 2002, Whalley and Brewin 2007, Gruebner, Sykora et al. 2016, Thoresen, Jensen et al. 2016). Besides, studying the negative responses could help to identify the potential threats, which would be meaningful to disaster relief processes and emergency management. Nevertheless, few of the studies have investigated the factors that may associate with the negative responses both in space and time.

Twitter plays an important role in people's daily lives in the United Kingdom. As a social media platform, Twitter provides people an opportunity to interact with others more quickly and get engaged in social events more easily (Katkina 2015). There were 30% of Internet users used Twitter in U.K. (Dutton, Blank et al. 2013), and these users were younger, wealthier, and better educated than the off-line British population (Blank 2017). The contents that the user post contain the comments, including feelings and attitudes of the user. By extracting the feelings within the contents, Twitter data can be used to monitor the post-disaster situation (Bai and Yu 2016), detect real-time traffic incident (Gu, Qian et al. 2016), and predict match outcomes (Schumaker, Jarmoszko et al. 2016).

Twitter adoption varies between countries, and many factors can affect the Twitter usage. Studies have suggested that age and the income, as well as the access to Internet or an Internet-enabled device, are the factors that may have impact on people's engagement in Twitter in the United Kingdom (Pearce and Rice 2013, Hargittai 2015, Blank and Lutz 2017), while the

socioeconomic status, gender, age, and Internet skills are considered as the factors in the US (Hargittai 2015). Moreover, the trust in the internet may contribute to user's internet activities. Blank and et al. examined user's trust in the internet in Britain between 2003 and 2009 by comparing two reported results. They found that Britain users' trusts in the internet were influenced by the general attitudes toward technology, and older people tend to be more skepticism about the high technology (Blank and Dutton 2012). Although these factors may affect Twitter data representation, collecting and analyzing the collective Twitter data within a specific area can, at least, represent the general attitudes toward social events of Twitter users in that particular area.

Since terrorist attacks frequently happened in U.K. (Engene 2007), understanding the collective emotional responses toward terrorist attacks became urgent and important. It is also necessary to know how the negative responses vary in a geographic area. It had been proven in many studies that negative feelings, including depression, anxiety, and stress, were harmful to human (Rodrigues, Lopes et al. 2017, Herbert, Hesse et al. 2018, Kanchanatawan, Sirivichayakul et al. 2018, Miskowiak, Larsen et al. 2018). Depressive emotions and stress had a significant influence on humans' appetite and body weight, as well as the accuracy of their decision-making skills (Wei, Li et al. 2018). Being trapped in depressive feelings for a long time could result in a mood disorder, or even worse, lead to a psychotic disorder (Herbert, Hesse et al. 2018, Kim and Na 2018). Negative emotion acts as a motivating factor underlying politicians' support (Rico, Guinjoan et al. 2017), and it could result in crimes, which would, on the other hand, generate more negative emotions (Guang, Feng et al. 2017). Therefore, studying the negative feelings within the emotional responses toward terrorist attack is important.

## 1.2 Literature Review

### 1.2.1 *Application of Social Media*

Traditionally, news related to a terrorist attack is covered by mainstream media, such as the TV news channels, newspapers, and radios. The coverage may be biased depending on a media's interest, and do not necessarily reflect the view or feeling of the people. Studies aiming on the emotional response to terrorism were mostly survey-based, which required a large number of participants and were time-consuming (Bleich, Gelkopf et al. 2006, Fischer, Postmes et al. 2011). However, the rapid development of information and the advent of new technology have significantly reshaped the ways of how each of us connects to the world. Building an information-sharing network provides us a better way to get involved in the world (Panagiotopoulos, Barnett et al. 2016). Twitter (Dorsey 2006), as well as Facebook (Zuckberg, Saverin et al. 2004) and Instagram (Systrom and Krieger 2010), have increasingly become the popular social media platforms, in addition to the traditional media. Unlike TV and newspaper, digital social media have more potential customers, a broader range of spread, and more importantly, a fastest way of spreading messages. With a large amount of monthly active users—Twitter (330 million), Instagram (800 million), and Facebook (2.2 billion)—social media can spread messages all over the world within an hour (Statista 2017).

Twitter, as one of the online networking platforms, has approximately one-quarter of adult users in America and about 320 million users worldwide (Ranney, Chang et al. 2016). Tweets, the texts that people post on their twitter accounts, contain information for us to capture and study. The rich information released by Twitter makes tweets the most favorite resource for social media data acquisition (Smock, Black et al. 2012, Lin, Lachlan et al. 2016, Panagiotopoulos, Barnett et al. 2016). Twitter also allows users to attach location information to tweets. A location-based



tweet, also known as geotagged tweet, contains the latitude and longitude of the digital device where the tweet was sent, such as a mobile phone, a tablet, or a computer. These devices can automatically record the location information of users when they mark their locations on Twitter.

### ***1.2.2 Use of Geospatial Data in Social Media Studies***

The location-based tweet allows us to track its geolocation information, which can be accessed with programming languages (Landwehr, Wei et al. 2016). Twitter provides Application Programming Interface (API) for public access, which offers multiple ways to collect tweets based on the needs of users. Twitter REST API can retrieve tweets within the past seven days, while, the Streaming API can be used to capture the streaming tweets. In order to protect the privacy of Twitter users, limitations existed in both two APIs, all standard (free) Twitter APIs no longer provide any access to old tweets beyond past seven days (<https://developer.twitter.com/en/docs/tweets/search/api-reference/get-search-tweets>). In other words, the maximum timeframe for Twitter REST API to work is within the past one week, and the Twitter Stream API can access the most recent data, usually within one day. Twitter also sets the rate limit of APIs, which defines how many times the APIs can be used in an hour. The detailed description and tips for avoiding being rate limited can be found elsewhere (<https://developer.twitter.com/en/docs/basics/rate-limiting>).

The research that aims to study the behaviors or investigate the public's reactions to an event at different phases would be more likely to use REST API to gather relevant tweets for (Massey, Leader et al. 2016). However, studies focusing on detecting real-time incident or forming an online information-sharing system would use Streaming API, instead of REST API (Padrez, Ungar et al. 2016, Uchida, Kosugi et al. 2016). With both APIs, tweets containing geolocation information could be extracted. As the Twitter user guide denotes, there are two classes of

geographical metadata: tweet location and account location. The tweet location usually associates with the geo-tagged tweets, while the account location is based on the ‘home’ location provided by the user in their profile. However, using the tweet location would provide more precise location data as it contains the point coordinates where the tweet is from (Developer 2018).

Analyzing the event-related geotagged tweets offers a lot of geographic insights and provides a target area for actions. It could not only help to reveal the place of the incident but also imply more when communicating risks to the public (Landwehr, Wei et al. 2016, Ranney, Chang et al. 2016). Event-related geotagged tweets posted within the period would contain rich information associating with the target event, including the location, moving path, and side effects it brought. The information regarding the situation of the disaster could be updated through analyzing related tweets, and government and emergency responders could give emergency alerts and promptly respond to the disaster (Dong, Halem et al. 2013, Wang, Wang et al. 2016, Wang, Ye et al. 2016).

Studying geotagged data can help us understand human behaviors. Researchers identified that there was a correlation between social connection and users’ check-in locations, and such correlation could represent the users’ geolocation information (Ma, Sandberg et al. 2017). A similar conclusion has been drawn in Shao et al.’s research, which studied travel tours by analyzing the check-in locations of tourists (Shao, Zhang et al. 2017). In this study, scientist detected the tourists’ spatial-temporal behaviors after analyzing the social media data and then extracted the locations to form the city’s tourism districts. It is believed that location-based data has made contributions to the fields of urban planning and tourism (Shao, Zhang et al. 2017). Geotagged data also presents a way of visualizing the community of a specific group (Zhao, Sui et al. 2017) and helps to allocate management resources in emergent situations (Chen, Elmes et al. 2016). Since

the pattern that tweets present is spatiotemporal (Wang, Ye et al. 2016), researchers would like to restrict their studies to a specific timeframe and explore research questions both in space and time.

Whereas geotagged tweets are the most favorite studying objects, previous studies indicated that less than 1% tweets were geotagged (Sloan, Morgan et al. 2013). Reasons may associate with the location service on Twitter and the demographic characteristic of Twitter users. The location service on Twitter is off by default, and users need to opt-in. Otherwise, the message they post won't contain any location information (Twitter 2018). Tasse et al. suggested that people chose not to share their locations in order to protect privacy (Tasse, Liu et al. 2017). What's more, adding a location to the message was a different process than adding a tag (Tang, Lin et al. 2010). Studies of the demographic characteristic of Twitter users have suggested that males are more likely to geotag their tweets than females, and the age for those who use geotagging was 0.82 years older than those who don't (Sloan and Morgan 2015). Sloan et al. have also concluded, though small differences have existed between users who use geo-service or not, those who use geotagged tweets don't represent the whole Twitter population (Sloan and Morgan 2015).

### ***1.2.3 General Approach of Studying Emotional Data***

Posted tweets also contain users' opinions and feelings regarding specific events, and these become a good source for mining the semantic data behind social media. The analysis of semantic data, also known as sentiment analysis, is an ongoing field of research in text mining (Medhat, Hassan et al. 2014). Its initial use was made to analyze sentiment based on texts such as letters, emails and so on. Topics, emotions, feelings and any other features related to opinions are extracted to detect the semantic hidden within the texts. With the advent of new technologies, such as online applications, microblogging, and social networks, these fields of studies gain more attention from the scientists (Harsh and Dhiren 2016). However, the development of technology also brings a lot

of challenges. The free access to tweets creates an unpredictably large data set which makes sentiment analysis complicated. Also, as the abuse use of symbols, slangs, and emotions in a tweet, it has much noise information that requires pre-processing before we initialize the sentiment analysis, making the whole process challenging.

The general approach for sentiment analysis is based on knowledge-based techniques, which calculates the average aggregate of the semantic orientation of the words and its phase (Kaur, Kumar et al. 2015). However, due to the use of informal language and the length limitation of tweets, summarizing the polarity of words cannot accurately reflect the sentiment of the topic-based tweets. In addition to that, lowering the uppercase letters, removing URL and user reference, removing digits, removing stop words, removing repeated letters, tokenizing, detecting Part-Of-Speech (POS) tags and lemmatizing should be done prior to extracting feelings within the tweet texts (Ficamos and Liu 2016). After that, tweets containing a bag of words for features/topics classification and extraction would be kept. Supervised machine learning, which requires a classifier to extract the features and feelings, can be used to detect the sentiment in tweets. There are two data sets in supervised machine learning. The training set is used to train the classifier based on their selected features with the available algorithms, such as the Support Vector Machine (SVM), the Naïve Bayes and the Decision Trees. The test data set is used to evaluate the performance of the classifier (Kaur, Kumar et al. 2015, Khan, Qamar et al. 2016, Khan, Qamar et al. 2016).

Despite the complexity of processing, sentiment analysis has been successfully applied in social media studies. It has been widely used in studying emergency response, identifying the sentiments from online social networks and understanding how users' sentiments change accordingly in space and in time (Neppalli, Caragea et al. 2017). By observing the increase or

decrease of the frequently used words on social media or exploring the sudden changes regarding the keywords positivity or negativity, sentiment analysis can detect an event or make a prediction (Ji, Cao et al. 2016, Paltoglou 2016, Schumaker, Jarmoszko et al. 2016). It can also help us to understand the public's awareness of diseases as well as their stigmas at early phases (Kim, Jeong et al. 2016, Oscar, Fox et al. 2017, Salas-Zarate, Medina-Moreira et al. 2017). However, as mentioned in other papers, the accuracy of the classifiers is limited and needs to be improved in the future work (Go, Bhayani et al. 2009, Kaur, Kumar et al. 2015, Giatsoglou, Vozalis et al. 2017). Also, the classifiers can only use the non-emotion feature to determine the sentiment, which could be a limitation when classifying the emotion-embedded social media data (Go, Bhayani et al. 2009).

#### ***1.2.4 Application of Space-time Analysis***

The space-time analysis in SatScan (Kulldorff 1997) can be used to pinpoint any geographic variation of activities and identify the peaks/troughs of an event. Researchers used this method to identify the spatial clusters of infectious and chronic diseases, as well as disease vectors and risk factors (Stelling, Yih et al. 2010, Sherman, Henry et al. 2014). The space-time analysis used a cylindrical window with a circular (or elliptic) geographical base and a specific height to identify the potential clusters (Kulldorff 1997). Cluster detection is a fundamental approach for studies aiming to explore the relationship between the objects and their geographic locations. Azage investigated the spatiotemporal clustering and seasonal variability of childhood diarrhea in northwest Ethiopia using space-time scan statistics. They found that the childhood diarrhea had both spatial-temporal variation and seasonal pattern (Azage, Kumie et al. 2015). The same method was used in another research to study the geographic cluster of resistant *Escherichia coli* within the regional network and the changes in clustering over time (Park, O'Brien et al. 2016).

Space-time analysis also provides multiple statistical models for various types of research in addition to detecting clusters. The space-time permutation model and the Bernoulli model are the most frequently used in space-time studies. The space-time permutation model requires less information and is more straightforward. Only with the case data, the model can identify the number of the observed cases in a cluster by using the spatial location and time for each case, and there is no further information of the control data required (Kulldorff M, Heffernan R et al. 2005). The model would gradually move a cylindrical window across space and time to examine the number of observed and expected cases in the cylinder at a location. A cluster in a particular geographic area was detected during a specific timeframe, suggesting that this area had a higher proportion of cases during this timeframe compared to the remaining areas. Due to the less requirement of the data, the model has been used to identify the cluster of negative emotions in the terrorist attack in Paris (Gruebner, Sykora et al. 2016). Similar research had been done to identify the anomalous diameter distribution of disease in Pennsylvania, USA (Rubin and MacFarlane 2008), detect the location of emergency events (Jasso, Hodgkiss et al. 2009), or monitor terrorist events in their early stage (Li, Jiang et al. 2010). The Bernoulli model, contrary to the space-time permutation model, requires more on the testing dataset, which is divided as cases and non-cases representing by a 0/1 variable, denoting as the cases and controls to serve for the purpose of the study. The model also requires the data containing not only the location but also the time (Kulldorff 1997). Gu and his colleagues employed the Bernoulli model to identify qualified patients for breast cancer clinical trials from free-text medical reports, and the results showed that the Bernoulli model was easier to implement and performed better than other techniques (Gu, Kallas et al. 2013). The same method has also been used in Agustian and his colleagues' research to detect localized disease clusters (Agustian, Rodd et al. 2012).

Aside from the space-time analysis, a wide range of spatial analysis methods have been developed to accommodate the social media studies. Geographic Information System (GIS) techniques have been used for mining the data behind the social media in recent years (Smock, Black et al. 2012, Dong, Halem et al. 2013, Simon, Goldberg et al. 2014, Ukkusuri, Zhan et al. 2014, Shekhar and Setty 2015, Lin, Lachlan et al. 2016, Martin and Schuurman 2017). Based on the needs of visualize geotagged data, Kernel Density Estimation (KDE) and Inverse Distance Weighting (IDW) in GIS are the two frequently adopted methods (Shook, Leetaru et al. 2012, Spitzberg, Tsou et al. 2012, Li, Goodchild et al. 2013, Tsou, Yang et al. 2013, Padmanabhan, Wang et al. 2014, Han, Tsou et al. 2015). The KDE estimates the density of the sample data based on a specific feature, which can be employed to investigate the relationship between social media content and its geolocation. Researchers used KDE to generate the kernel density map to study the 2012 U.S. Presidential Election (Tsou, Yang et al. 2013), and this method can also be employed to visualize the tweets density while studying the spatiotemporal pattern of Twitter (Li, Goodchild et al. 2013). The IDW can be used to predict the value of an unmeasured the location, and this can help to interpolate the value of the nearby location.

### ***1.2.5 Importance of Studying Negative Emotional Data in Mental Health***

Tweets containing the humans' feelings toward an event would cluster in an area. The negative feeling is an important study object for examining the relationship between human behaviors and their surroundings. This negative feeling, different from positive or neutral feeling, could reveal more severe problems, disclosing the impact of surroundings on human beings' mental health. Understanding Twitter users' emotional responses to terrorist attacks, whether they feel threatened, angry, fearful, or overwhelmed, can guide researchers to study the global impact of terrorism. Simon and others studied the tweets related to the terrorist attack in the Westgate

Mall in Kenya, and they found information tweeted by the public had facilitated a greater awareness of the situation (Simon, Goldberg et al. 2014). Feedback toward terrorist attacks was collected once individuals or organizations posted their reactions. This feedback could allow us to examine the variation of negative response based on its location, identify the clusters of negative sentiment, and evaluate how it could be affected by the incident location.

Although many studies have used the emotional data to investigate the health impact of emergency events (Rico, Guinjoan et al. 2017, Herbert, Hesse et al. 2018, Ripper, Boyes et al. 2018), few have examined how both geographical and temporal distance affects the distribution of emotions. In addition to distance, the pattern of emotions would also be affected by human behaviors and area's economic situation, which should be taken into consideration when analyzing the spatial pattern.

### ***1.2.6 Rural/Urban Differences in Social Media Adoption and Mental Health***

People from rural/urban communities may have various attitudes toward social media. Eric and et al. studied how the rural communities used modern technologies in the US. They found rural users were younger than the urban users, and they were more attempted to set their profiles to private than the urban users (Gilbert, Karahalios et al. 2010). What's more, Christopher and others indicated that there was a reciprocal relationship between social networks and social trust in rural communities, while the relationship was linear in the urban communities (Beaudoin and Thorson 2004). In other words, urban residents can be more easily getting engaged in social media, as well as to pay more attention to a social event.

Many studies have suggested that terrorist attacks have impacts on people's mental health, resulting depressions and anxieties (Paykel, Abbott et al. 2000, Boscarino, Galea et al. 2002, Philo, Parr et al. 2003, Whalley and Brewin 2007, Thirthalli, Reddy et al. 2017). Terrorist attacks, as well



as crimes, are more likely to occur in urban areas than in rural areas (Sameem and Sylwester 2018). The urban dwellers in Britain, compared with the rural dwellers, are at the high risk of being a target (Hinkkainen and Pickering 2018). In this case, if a terrorist attack happened, the urban dwellers in U.K. would have more depressive feelings.

People's mental health varies in urban/rural areas. It has been proven that the actual different dimensions of rural/urban spaces—physical, demographic, economic, social and cultural—impact the mental health of rural/urban dwellers (Philo, Parr et al. 2003). Historical studies indicated that adults living in urban areas were thought to be at a higher risk of depression and general psychotic disorder (Dohrenwend 1975, Barquero, Muñoz et al. 1982, Neff 1983). A further study has been conducted on people that were older than 75 years in Britain, and the result suggested that higher population density was associated with increased depression and anxiety in older people (Barquero, Muñoz et al. 1982). Since most of the urban areas in U.K. are highly populated than the rural ones (Suprageography 2016), the older adults in urban areas are expected to have more depressions and anxieties than the ones in rural areas in U.K. However, when the same study was conducted in China, it had a contrary conclusion. Wang and others indicated that older adults living in urban areas in China would have less depressive symptoms than the ones living in rural areas, because the physical and social environments were better in cities (Wang, Chen et al. 2018). Also, Chavez and others identified there was little difference in mental health if the study object were young adults (Chavez, Kelleher et al. 2018).

Since many studies had different conclusions than the previous studies (Allan, Williamson et al. 2017, Chavez, Kelleher et al. 2018, Wang, Chen et al. 2018), the mental health difference in rural/urban areas should be investigated case by case. What's more, the variations in demographics

and social media adoption in rural/urban areas may also need to be considered when using social media data to investigate the mental health impact of the terrorist attack.

### **1.3 Research Question and Objectives**

Using the two terrorist attacks of London, the United Kingdom in 2017, this thesis raises a research question—how Twitter users’ emotional responses toward terrorist attacks vary in geographic space and time. To answer this question, this study assumes that the location of the tweet represents the residential location of the users. This study has three objectives: first, extract geotagged tweets with Twitter API; second, after collecting the data, use space-time analysis to identify the clusters of negative tweets and examine the variation in space and time; third, after identified the cluster of negative, use Chi-square test to investigate factors that could be associated with such variation in rural and urban differences

### **1.4 Significance of this Study**

Previous studies focused on using terrorism-related emotional data to examine how terrorist attack may affect people’s life (Bleich, Gelkopf et al. 2006, Salib and Cortina-Borja 2009, Fischer, Postmes et al. 2011, Solana, Nogueira et al. 2017). However, few of them have focused on investigating the distribution pattern of emotional responses toward terrorisms or examining the factors associated with the distribution in space and time. This study used geographical methods to explore how the 2017 terrorist attacks in London affected people’s emotional response both in space and time. It also discussed the factors that may associate with the spatiotemporal pattern of the negative tweets. This study hypothesized that Twitter users’ responses varied in the United Kingdom. Urban areas would have the most significant amount of related responses, as well as the negative responses, indicating users living in these areas would have a greater concern

than the rest areas. Concerning the high frequency of terrorist attacks in Europe, this study could be used as a guide for post-disaster trauma counseling and management.

## 2 METHODOLOGY

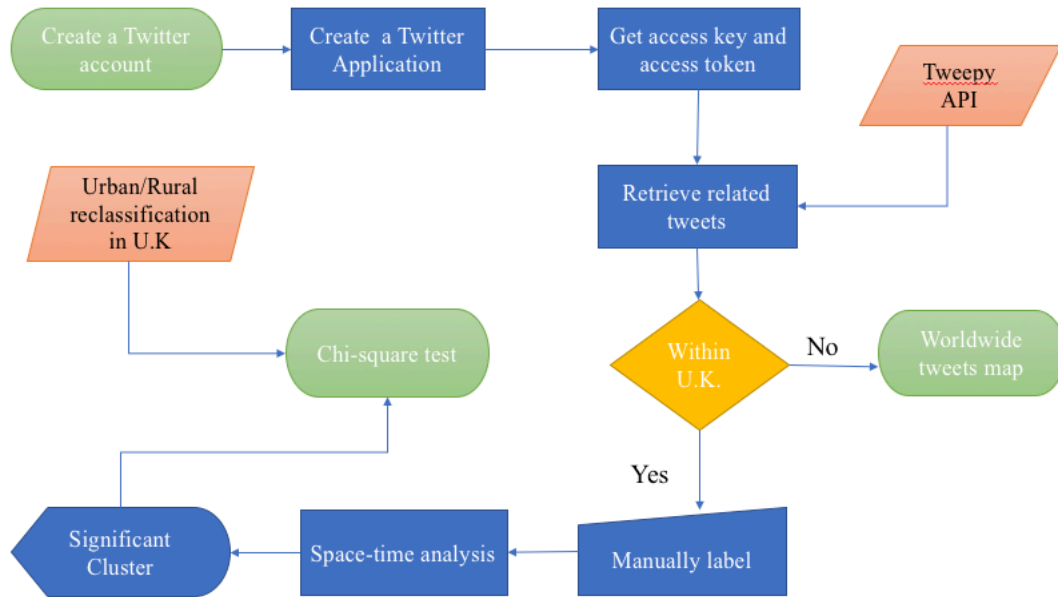
### 2.1 Study Area

The study area of this thesis was the United Kingdom, which consists of England, Wales, Scotland, and Northern Ireland. The U.K. has been the favorite frequent target of terrorism in Europe. London, as the capital city, had experienced more than ten reported terrorist attacks in the 21st century. Four of them happened in the year of 2017. On March 22nd, 2017, a driving car ran into the pedestrians on Westminster Bridge in London and caused 40 people to be injured and 6 deaths. On June 3rd, 2017, a van with three attackers was driven into pedestrians on London Bridge, and the terrorists stabbed people before the policemen shot them dead. This attack left 48 people injured and 11 people dead, including the three attackers.

To examine the difference in public emotional reactions to these two attacks in both time and space, and to identify the cluster of negative sentiment that would be involved with locations, this study used the geotagged tweets that fell inside the U.K. as the study objects. The contents of the tweets and the location associated with each related tweet were collected. Worldwide geotagged tweets were also collected as a comparison of these in U.K.

## 2.2 Methods

### 2.2.1 Data Collection



*Figure 1. Research workflow*

This study was divided into two phases: data collection and data analysis. A workflow was provided above (Figure1). A Twitter account was required for retrieving tweets and managing Twitter applications on the Twitter Apps platform, which can be accessed at <https://apps.twitter.com/>. Within each Twitter application, a consumer key (API key) and an access token were assigned to users for retrieving tweets with Twitter APIs. Both the API key and the access token were required for each independent request. This study adopted the Tweepy API, which provided access to the entire Twitter RESTful API method (Tweepy 2018). Geotagged tweets containing event-related information were intentionally collected by two python programming scripts (Figure 2). This study used two keywords, i.e., “London attack” and “U.K. Parliament attack,” and then made two independent requests with each keyword. For the attack that happened in June, “London Bridge attack” was set as the keywords to retrieve relevant tweets.

The designed scripts would return all geotagged tweets that contained the specific keyword without considering its upper/lower case and word order.

```
import tweepy
from tweepy import OAuthHandler
import datetime
import codecs
import json
ckey="kws4HapeDreWAtT21eM2IAtSr"
csecret="ur0Bb9PPTkDOEITfFjFU5Gj9JDup1RzyHEFJ50yeAKpzL6e5B5"
atoken="2761456714-TyUgdiibcvA7nNe0agtcIXUSUtgc56CE4ijXRB8"
asecret="gYv78XTAwbZTU0oYotiITDbdzortCQtDCaJVpDq2oGw40b"
auth=OAuthHandler(ckey,csecret)
auth.set_access_token(atoken,asecret)
api = tweepy.API(auth)
file1=open("./coordinates_bridge_attack_0622.txt","w")
file2=codecs.open("./jsontweet_bridge_attack_0622.txt","w","utf-8")
file3=open("./textonly_bridge_attack_0622.txt","w")

startDate = datetime.datetime(2017, 3, 29, 0, 0, 0)
endDate = datetime.datetime(2017, 12, 4, 12, 0, 0)
max_id = -1
maxTweets = 17900
words="London Bridge attack"
i=0
while i < maxTweets:
    if (max_id<=0):
        results = api.search(q=words,count=100)
    else:
        results = api.search(q=words,count=100,max_id=str(max_id))
    max_id=results[-1].id
    print "result",str(i),results[-1].created_at
    for result in results:
        i=i+1
        if result.created_at > endDate or result.created_at < startDate:
            continue
        coords=result.place
        #print coords
        if coords is not None:
            lon = coords.bounding_box.coordinates[0][0][0]
            lat = coords.bounding_box.coordinates[0][0][1]
            print lon,lat,result.created_at,result.text
            file1.write(str(lon)+" "+str(lat)+"\n")
            file2.write(str(lon)+" "+str(lat)+" "+str(result.created_at)+" "+result.text+"\n")
            file3.write(json.dumps(result._json["text"]))
            file3.write('\n')

file1.close()
file2.close()
file3.close()
```

*Figure 2. A sample of python script*

A filter was set in the scripts as the study aimed to collect English-written tweets containing geolocation information. When a full request was made, it would attempt to return the exact location associating with each relevant tweet. Coordinates of the geotagged tweets were extracted and later would be mapped on ArcMap. Three requests were made continuously during 3/22/2017 to 4/12/2017 and 6/5/2017 to 6/21/2017. A total number of 2,183 geotagged tweets (March: 1,382, June: 801) were collected within the timeframes worldwide. A challenge this study faced was that there was an overwhelming number of tweets immediately following each attack. Twitter set a rate limit on how many times the Twitter API can be used per user access token, either 15 calls every

15 minutes or 180 calls every 15 minutes (<https://developer.twitter.com/en/docs/basics/rate-limiting.html>). Therefore, this research was limited due to missing geotagged tweets at the beginning of each collection period. In total, there were 1,056 geotagged tweets in U.K.

### 2.2.2 Data Processing

Retrieved tweets (Figure 3) contained the longitude, latitude, date, time, and the texts. As the local time varied from country to country, this study used the Coordinated Universal Time (UTC) to unify all the time zone differences. Duplicate tweets were removed if they occurred at the same coordinates and time with the same content. However, tweets with same coordinates and contents, but different time, would all be kept due to the unknown purposes behind these Twitter accounts and the small number of the available dataset.

20	-75.0555	45.40522	6/5/2017	21:04:18	@Kate_Monahan523 @Reuters UPDATE: British police say all of the people arrested
21	3.579764	50.97953	6/5/2017	21:12:48	Mensen als @mboudry voeren het verkeerde debat. Lees Fisk of Yuval Harari als je
22	-10.2255	51.41922	6/5/2017	21:25:15	<a href="https://t.co/sO5NQ1cdLy">https://t.co/sO5NQ1cdLy</a> Fisk getting down to the ugly business of the truth
23	-5.35341	51.37878	6/5/2017	21:37:41	<a href="https://t.co/up4I8jgA7k">https://t.co/up4I8jgA7k</a> Jeremy Corbyn on the terror attack on London Bridge Wat
24	-8.23202	37.01044	6/5/2017	21:39:05	@discreetsecure @Independent @SadiqKhan @SadiqKhan didn't look at the Nice ;
25	-83.2044	42.47413	6/5/2017	21:42:22	London Bridge attack: 2 of 3 killers identified <a href="https://t.co/GNa4NshoGD">https://t.co/GNa4NshoGD</a> u should b
26	-122.792	45.48623	6/5/2017	21:44:09	Trump's Response Of The London Bridge Attack Twisted By The Left <a href="https://t.co/bv">https://t.co/bv</a>
27	2.062743	48.87234	6/5/2017	21:47:15	@KwikWarren some more UK joy to get your teeth into: <a href="https://t.co/2jVD8kCFGu">https://t.co/2jVD8kCFGu</a>
28	2.224101	48.81552	6/5/2017	21:47:17	#LondonAttacks: a huge fundamental point to the protection of national security: c
29	-5.35341	51.37878	6/5/2017	21:48:47	The five people missing after the London Bridge terror attack <a href="https://t.co/6mEFsQ">https://t.co/6mEFsQ</a> :
30	-74.0267	40.68394	6/5/2017	21:51:29	The Vast Majority of #Muslims are NOT Terrorists, BUT the Vast Majority of Terroris
31	-0.25947	51.41728	6/5/2017	21:51:46	I survived London Bridge and feel lucky. And angry. I cannot unsee what I saw   An
32	-114.316	50.84278	6/5/2017	21:54:06	London bridge terror attack victim Christine Archibald recalled as 'gentle soul' by f
33	-0.18789	51.48372	6/5/2017	21:55:06	Important for John Oliver to have done this -- well done <a href="https://t.co/JS5bO49nNg">https://t.co/JS5bO49nNg</a>
34	-0.29258	51.55518	6/5/2017	21:55:30	Khuram Butt and Rachid Redouane named as London Bridge terrorists - everything
35	-5.35341	51.37878	6/5/2017	21:57:54	Footage from London Bridge attack captured by photojournalist who witnessed po
36	2.20722	51.41528	6/5/2017	22:00:28	The hypocrisy of our government after the London attack <a href="https://t.co/6pWu2b7Y">https://t.co/6pWu2b7Y</a> :

Figure 3. Sample tweets retrieved from Twitter

This research then extracted tweets containing negative emotions. A typical negative tweet showed fear, sadness, anger, shock, confusion, disgust, shame, among others (Sykora, Jackson et al. 2013, Gruebner, Sykora et al. 2016). In this study, negative tweets were considered as those that delivered severe concerns regarding anything that related to the attack. As shown in the literature review, using text mining, such as machine learning, to conduct the sentiment analysis can help to understand the contents. However, these methods require a large amount of data for

training and testing. Since the number of the geotagged tweets was not as large as expected, this study manually scrutinized each tweet to assess its negative emotion. To minimize personal bias, all categorized tweets were verified later by a peer. Below (Table 1) listed several negative tweets.

*Table 1. Samples of negative tweets*

Longitude	Latitude	Contents
-0.297251	51.685439	the last leg's' response to the London attack is f—brilliant ????
-0.775435	51.279904	so sad watching the vigil in London today. our thoughts & prayers are with everyone who was affected by yesterday's attack
-0.15191	51.410792	r.i.p ??? i had tears in my eyes walking past where the attack was london you are beautiful ??londonstrong
-3.0812071	51.549936	i think they are sensible & very necessary to stop a tory government exploiting brexit to attack people's rights...

To identify the clusters of negative tweets, this study used the space-time permutation model in SatScan to evaluate negative geotagged tweets (cases) collected within the two timeframes from March 22<sup>nd</sup>, 2017 to April 12<sup>th</sup>, 2017 and June 5<sup>th</sup>, 2017 to June 21<sup>st</sup>, 2017. The space-time permutation model only required case data, including each case's geographic coordinates and time. The special nature of social media data was that the entire background population who were using tweets was unknown. Therefore, the space-time permutation model, which required only cases, was more appropriate compared to the Bernoulli or the Poisson models.

To reflect the temporal dimension, this study assigned a numerical value to each tweet corresponding to the number of hours this tweet was posted since the date of an attack. Moreover, the posting time of each tweet had been cautiously converted to generic time (Figure 4) using the equation below (Equation 1). The equation set the time 0:00 of March 22<sup>nd</sup> as the starting point to measure how far each tweet was away from that point in timescale.



Lon	Lat	Date	Time	Text	Generic Time
-2.7037691	53.45994	2017-03-22	15:04:27	andrew neil pays moving tribute to pc palme	16
-0.5103648	51.286702	2017-03-22	15:43:05	AT_USER visit AT_USER on instagram for t	16
-0.5103648	51.286702	2017-03-22	15:44:23	AT_USER visit AT_USER on instagram for t	16
-0.06111	51.5499687	2017-03-22	16:36:31	london attack: eight-year-old children pay tri	17
-1.2501363	52.921473	2017-03-22	16:36:31	theresa may: "it is wrong to describe this as	17
-0.187894	51.483718	2017-03-22	16:43:53	????????? ?? ?????? ?? ?????????? ???	17
-0.170246	51.564585	2017-03-23	15:57:01	westminster attack medics: 'a day london ha	40
-0.2160701	51.483718	2017-03-23	20:56:07	asma attack AT_USER is now trending in lc	45
-0.170246	51.564585	2017-03-23	20:56:14	westminster attack medics: 'a day london ha	45
-0.187894	51.483718	2017-03-23	20:58:23	amazing display here in london honoring the	45
-3.278624	51.447362	2017-03-23	20:59:57	a cardiff mum was locked inside westminster	45
-0.5103648	51.286702	2017-06-05	20:54:23	tonight thousands of londoners came togeth	1821
-0.15191	51.410792	2017-06-05	22:05:35	police arrest 12 people in barking following l	1823
-0.259465	51.417277	2017-06-05	20:19:45	john oliver you absolute legend □□john olin	1821
-0.259465	51.417277	2017-06-05	21:51:46	i survived london bridge and feel lucky. and	1822
-0.254269	51.379947	2017-06-05	22:19:43	london held a vigil honouring those who die	1823
-0.112442	51.5068	2017-06-05	20:45:06	police arrest 12 in hunt for associates of lon	1821
-1.551536	53.636339	2017-06-05	22:29:12	breitbart writer fired after anti-muslim tweets	1823

*Figure 4. Process of calculating generic time*

$$\text{Generic time} = DD * 24 + \text{Hour} + I \quad (1)$$

Where DD represented the day difference, measuring how many days it had been since the attack happened, and the hour represented the actual hour of the posting time.

To understand the nature of the location where tweets were sent, this study also reclassified the urban/rural areas in England, Wales, Scotland, and Northern Ireland. The original classification was conducted in those countries separately based on census Output Area (OA) (Northern Ireland Statistics and Research Agency 2015, Statistics 2016, Statistics 2017), and each had a unique rural/urban classification. After examining the existing differences among the classifications in those countries, this study consolidated all the classes into six categories (Table 2).

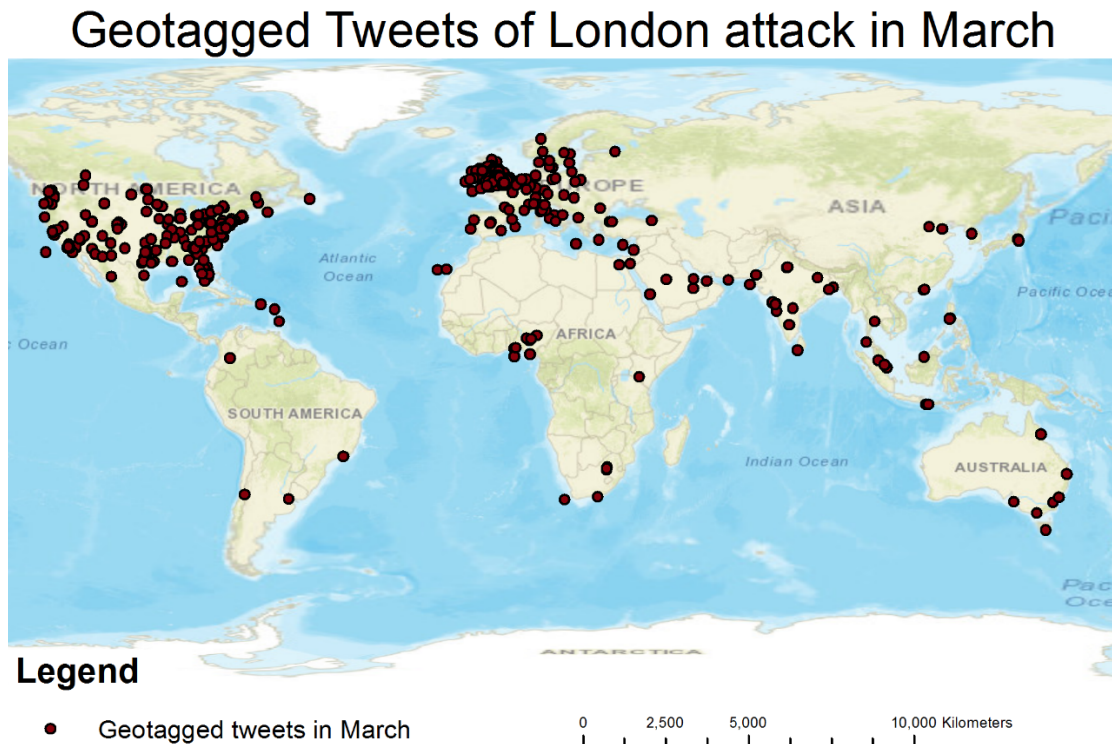
*Table 2. Rural/urban reclassification in U.K.*

Original Classification	Reclassification (6 fold)	Description
Belfast city, Derry City, Urban major conurbation.	Class 1: Large Urban	Settlements over 125,000.
Large Town, Medium Town, Urban minor conurbation, Urban City and Town.	Class 2: Other Urban	Settlements between 10,000 and 125,000.
Small Town, Urban City and Town in a sparse setting, Rural Town and Fringe.	Class 3: Accessible Small Town	Settlements between 3,000 and 10,000.
Intermedia settlements, Rural Town and Fringe in a sparse setting, Rural village.	Class 4: Remote small Town	Settlements between 3,000 and 10,000. Beyond a 30-minute drive time of a settlement of 10,000 or more.
Village, Rural village in a sparse setting.	Class 5: Accessible Rural	Settlement below 10,000 and within a 30-minute drive time of a settlement of 10,000 or more.
Open Countryside and small village, Rural hamlets and isolate dwelling, Rural hamlets and isolate dwellings in a sparse setting.	Class 6: Remote Rural	Settlement below 10,000 and beyond a 30-minute drive time of a settlement of 10,000 or more.

This study also used Chi-square test (Angelesi 2007) to examine whether the number of the negative tweets correlated to an area's urban/rural classification. Each geotagged tweet was denoted as 1/0 to indicate whether it was negative/non-negative. Also, the class that the tweet belonged to was represented by 1, and the rest were represented by 0. The Chi-square test would investigate the relationship between all the negative tweets and each rural/urban classification, and then give the correlation coefficient and the significance of this correlation.

### 3 RESULTS

A total of 2,183 geotagged tweets worldwide (March: 1,382, June: 801) had been collected during the study period. The worldwide distribution maps (Figures 5&6) suggested that tweets focused mainly in North America and Europe, and sporadically presented in the rest of the world. The United Kingdom, as the victim of the attacks, had the most intensive tweets. The Eastern United States had more relevant tweets clustered compared to the west coast. This was possibly resulted from the use of English keywords and countries with English as the official language. Australia was an exception where only a few messages were tweeted.



*Figure 5. Distribution of geotagged tweets in March*

## Geotagged Tweets of London Bridge attack in June

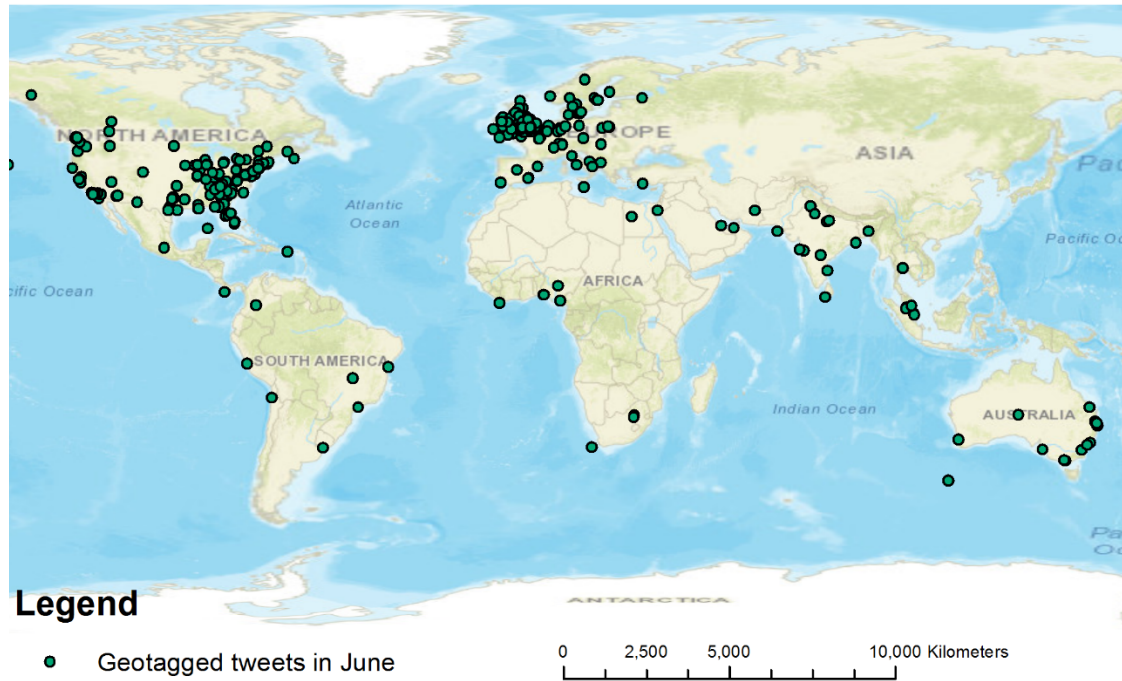


Figure 6. Distribution of geotagged tweets in June

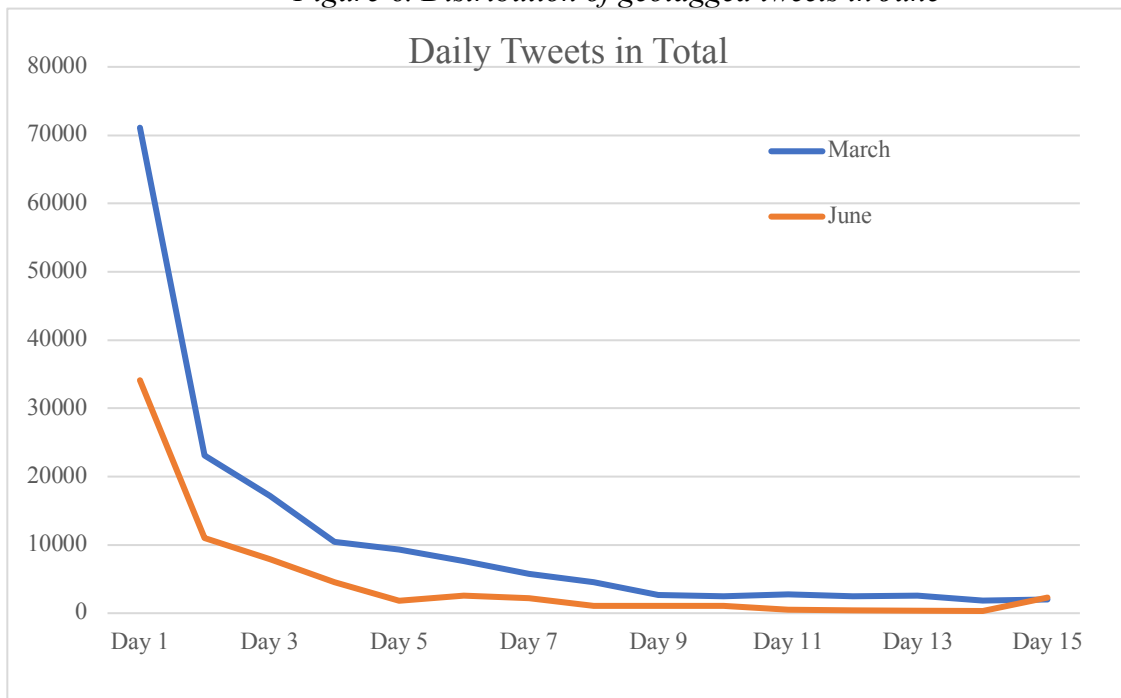
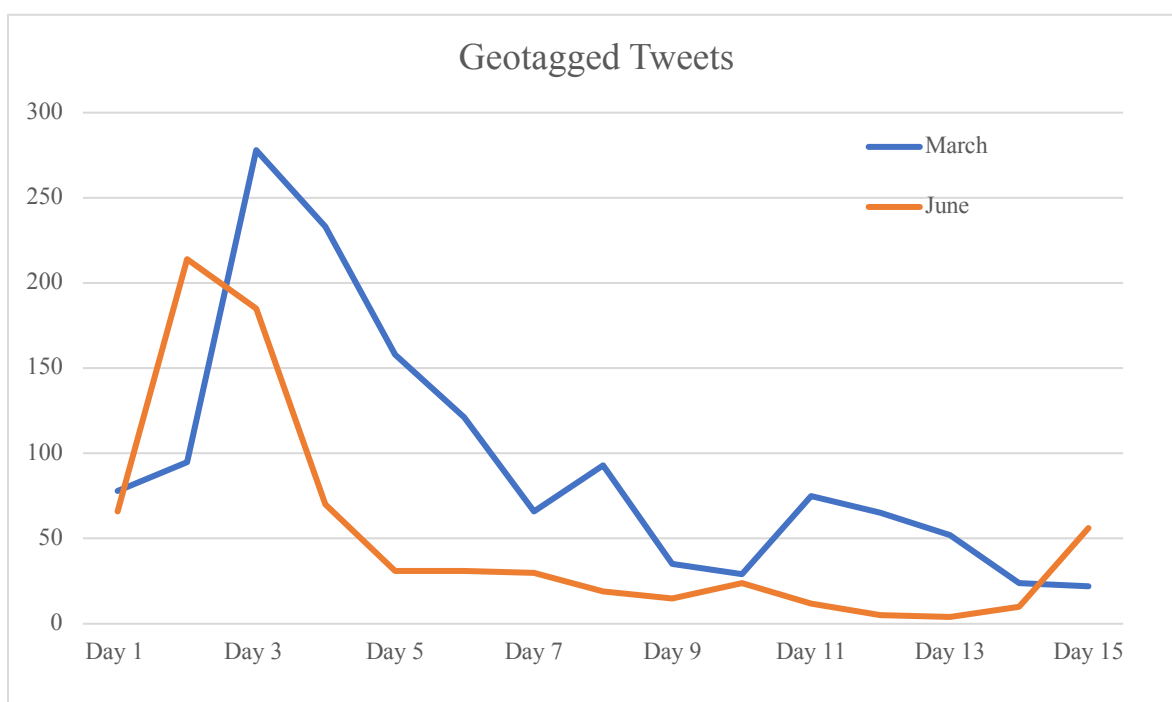


Figure 7. Daily number of all relevant tweets in the world

Note: Data is possibly missing on the first day for both worldwide tweets and geotagged tweets due to Twitter API rate limitation and overwhelming capacity of tweets (day 1, 2..., refers to the date from the incident).

The number of both global geotagged tweets and all relevant tweets (both geotagged and non-geotagged) grew rapidly at the beginning of the incident, usually reached the highest number on the first day of the event, and later gradually decreased with time until it turned to 0 (Figures 7& 8). In general, after two weeks most tweets were retweets of previous messages and new tweets became rare. The overall global pattern can be interpreted as the public's attention reached to the peak by the sudden occurrence of the terrorist attack on the first day, and it decreased for the subsequent days until it disappeared. There were some specific days where the number bounced back but never exceeded the peak value on the first day.



*Figure 8. Daily number of geotagged tweets in the world*

Although the overall pattern for the daily number of geotagged tweets was similar to that of all tweets, it fluctuated on some days that needed to be explained in more detail (Figure 8). The increased number of geotagged tweets from Day 1 to Day 3 in March and from Day 1 to Day 2 in June was possibly resulted from the rate limit error set by Twitter's server and thus may affect the total number of retrieved tweets within that periods. There were also two timeframes where the

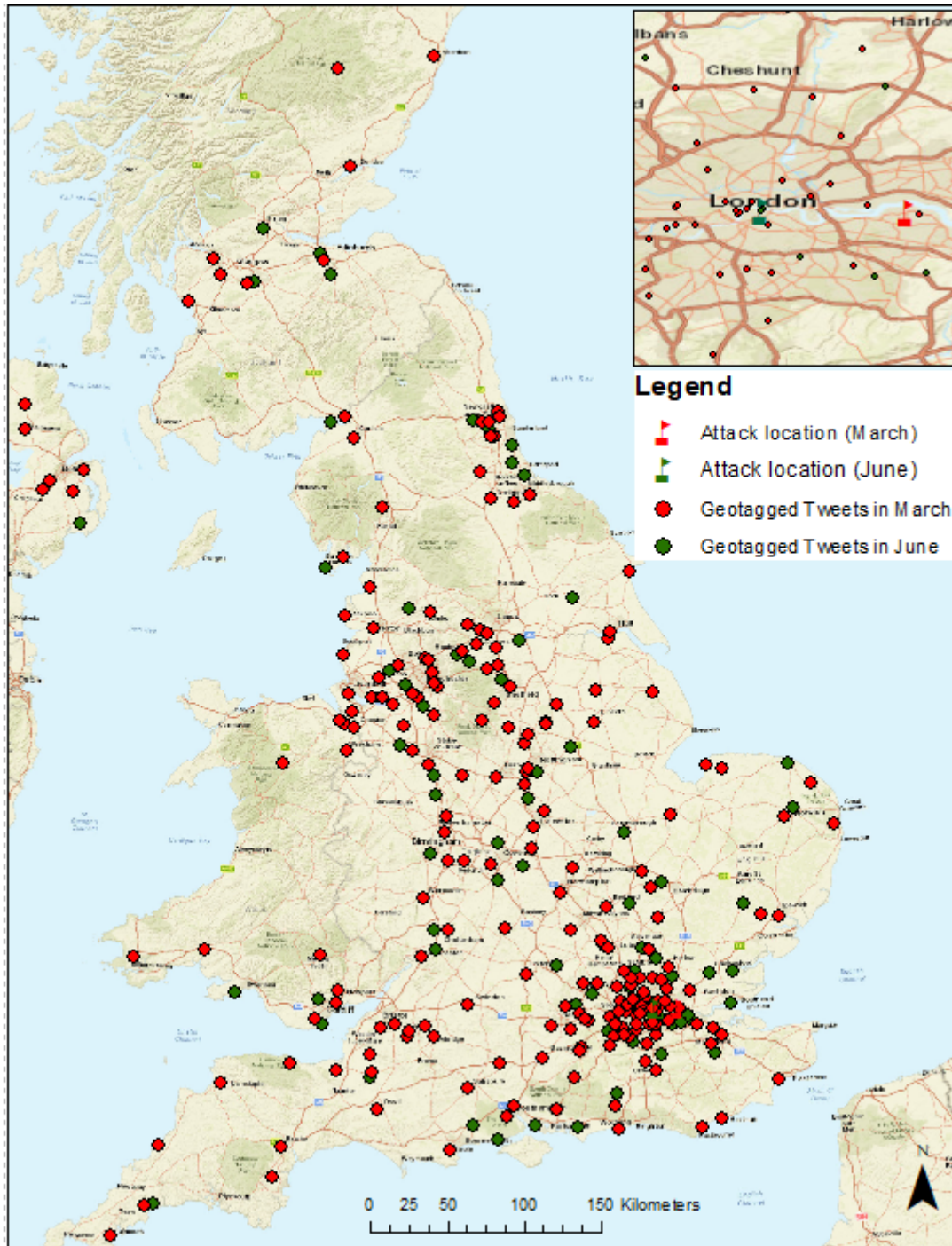
number of geotagged tweets had small fluctuations, such as Day 7- Day 8 and Day 10 – Day 11. As the investigation of the terrorism was moving forward through the time, updates related to the event, such as the attacker’s motivation, and the total number of injuries or the fatalities could affect the daily number of geotagged tweets. However, such unstable fluctuations haven’t been found on the number of all relevant tweets (Figure 7). Comparison of the two terrorist attacks indicated more tweets in March than that in June, suggesting attention to terrorist attacks faded when they repeated three months apart.

*Table 3. Number of geotagged tweets in U.K.*

Events	# of geotagged tweets	Unique locations	# of negative tweets
March	717	222	100
June	339	74	28

There was a total number of 1,056 geotagged tweets in U.K., of which 100 negative tweets were created in March and 28 negative tweets in June (Table 3). Among these tweets, 222 unique locations corresponded to the tweets in March, and 74 individual locations corresponded to those in June. In other words, many geotagged tweets were sent from the same location. It was also noticeable that the number of geotagged tweets, as well as the negative tweets, was higher in March than these in June.

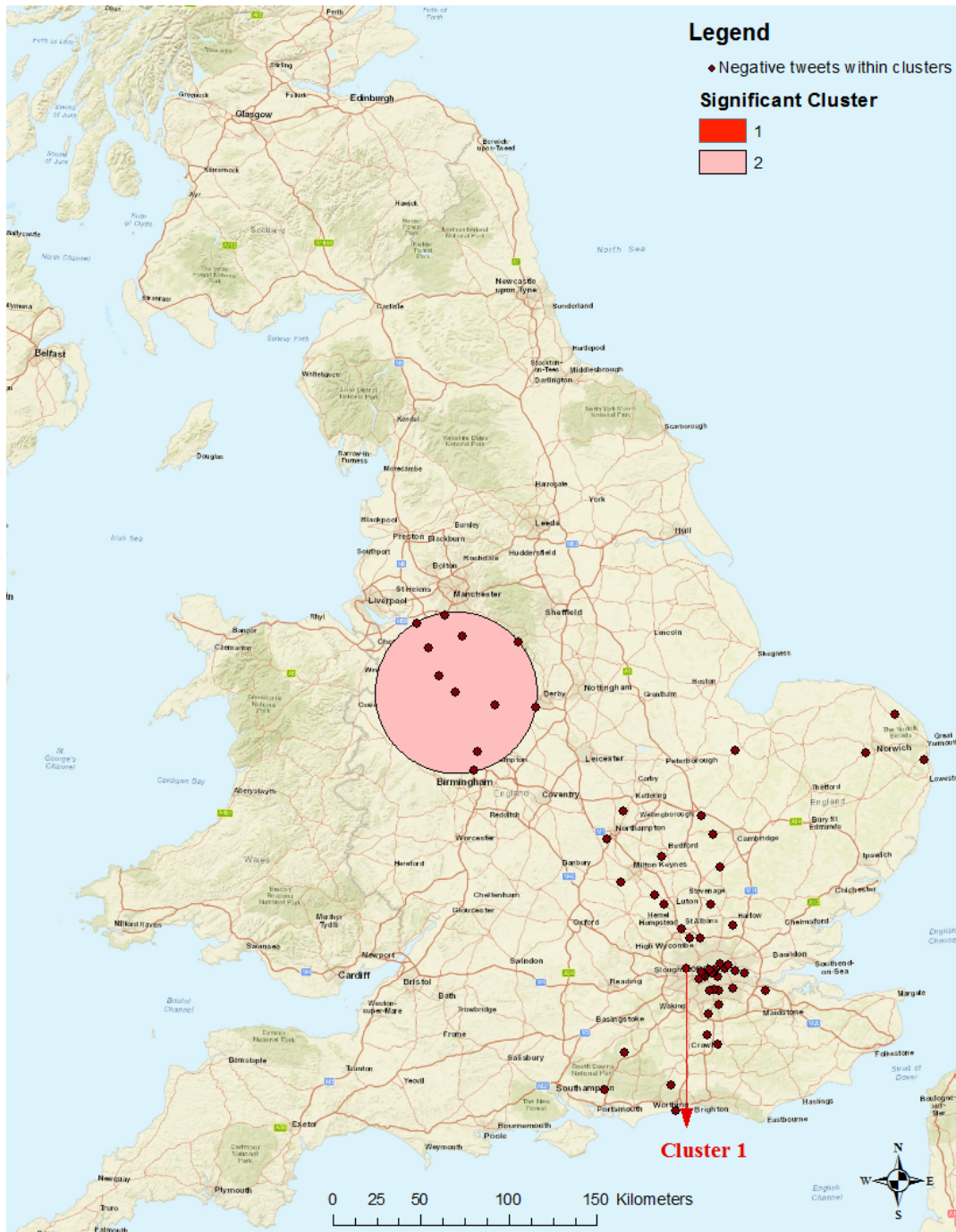




*Figure 9. Geotagged tweets in U.K.*

Given the map above (Figure 9), the majority of the tweets were sent from England, and most of them were clustered in the southeast area, which is close to the city of London where the two attacks happened. The rest were scattered in Northern Ireland, Scotland, and Wales.





*Figure 10. Clusters of the attack in March*

*Note: The #1 cluster was made up of repeated points*

A map containing the information regarding all the significant clusters was given at the end of the analysis (Figure 10). When the search window had a radius of 75 km, all the clusters

were in England. The first cluster, as well as the second cluster, was close to the metropolitan areas of London and between Manchester and Birmingham, respectively.

*Table 4. Summary of geotagged tweets in March (r=75 km)*

Study period	0 to 527
Number of locations	222
Total number of cases	100

*Table 5. Description of the first cluster in March*

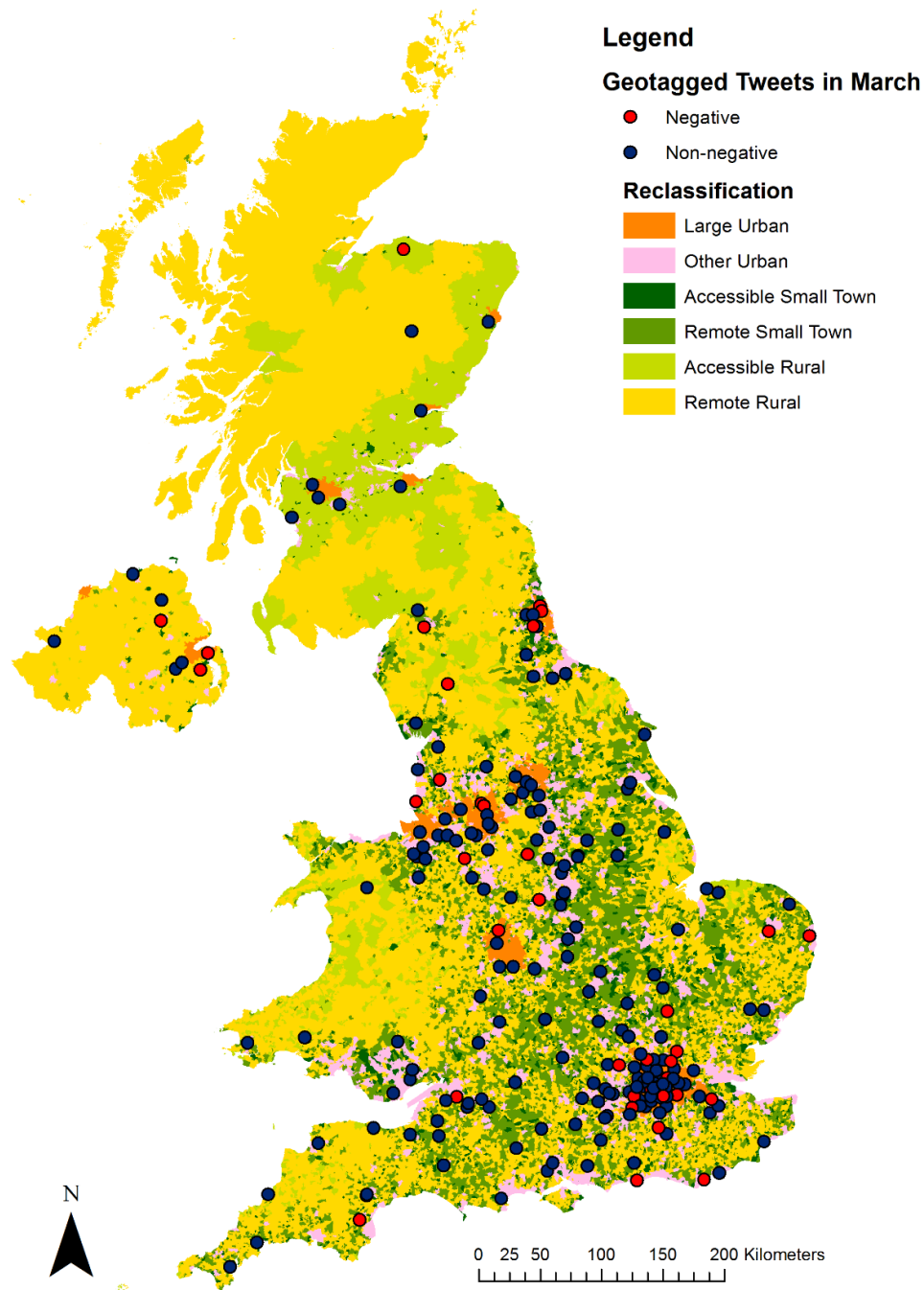
Coordinates / radius	(51.527592 N, 0.336055 W) / 0 km
Timeframe	260 to 260
Number of cases	31
Expected cases	9.61
Observed / expected	3.23
Test Statistic	17.674800
P-value	0.0000000078

After running the space-time permutation model, the result (Table 4) indicated that there was a total of 717 geotagged tweets created in March, and 222 unique locations were associated with these tweets. The first most likely cluster (Table 5) took place on April 1<sup>st</sup>, 2017 from 19:00 to 20:00, ten days after the attack. A closer examination of the tweets suggested that these were from the same twitter account, even though the time stamps associated with these tweets were different. It is unclear why the user repeated tweeting the same message. This study considered this as a false positive cluster given the tweets' relatively narrow timeframes from the same user.

*Table 6. Description of the second cluster in March*

Coordinates / radius	(52.948941N, 2.226804 W) / 45.73 km
Timeframe	86 to 98
Number of cases	6
Expected cases	0.72
Observed / expected	8.33
Test Statistic	7.584542
P-value	0.023

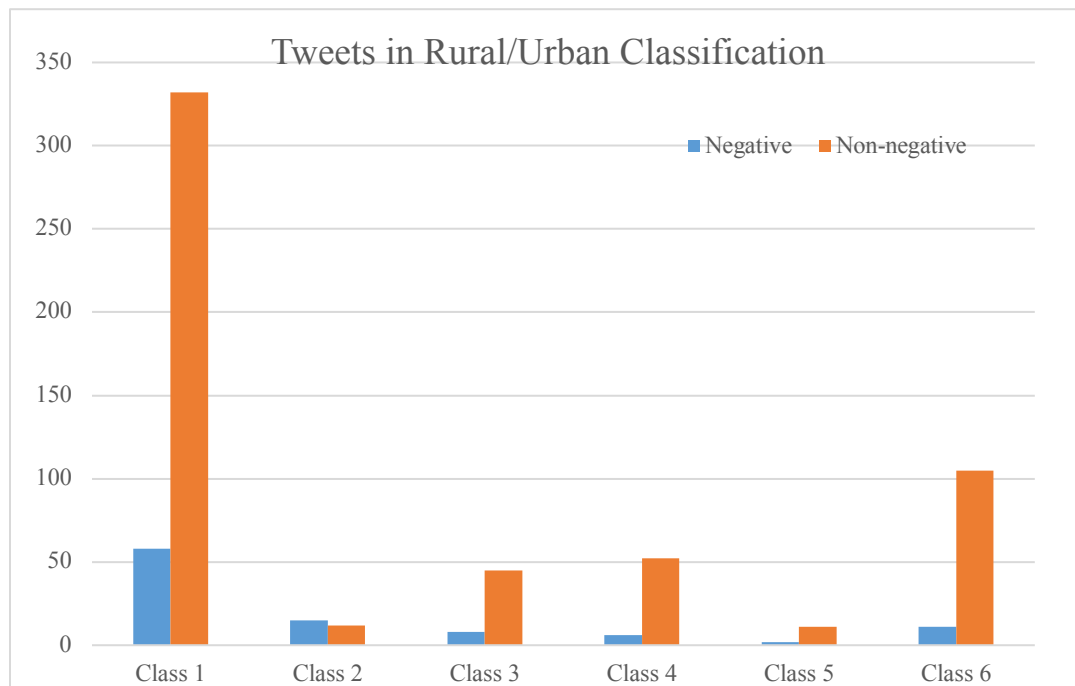
The second cluster was a circular area with a center of 52.948941N, 2.226804 W, and a radius of 45.73 km (Table 6). Tweets that fell inside the cluster were created between March 25<sup>th</sup>, 2017 at 15:00 and March 26<sup>th</sup>, 2017 at 1:00. This second most likely cluster occurred three days after the attack within a circle with a 45.73 km radius. It included six negative cases, while only 0.72 were expected. The clustering of the negative feeling of the users covers a massive area. To examine how sensitive the result was, this study alternated the search window size to 36 km and 100 km. SatScan consistently reported a significant cluster of negative tweets within the region between Manchester and Birmingham. When the same operation was applied to the tweets generated in June, the result was not as significant as that in March, so that this study wouldn't report it here.



*Figure 11. Tweets and rural/urban classification in U.K.*

Overlying the rural/urban reclassification map and the tweets in the U.K. (Figure 11), it can be found that most of the geotagged tweets were created in urban areas although a small portion fell into the rural area. England had the most tweets, and the suburb area of London had the highest

density of tweets, which was denoted as large urban area or other urban areas. Northern Ireland, Scotland, and Wales did not have as many tweets as England.



*Figure 12. Tweets within each classification*

The histogram (Figure 12) showed that the class of large urban area had the largest number of tweets (both negative and non-negative ones) among the six classes. Most areas had more non-negative tweets than the negative ones. However, areas categorized as Class 2, i.e., other urban areas, had more negative tweets (count: 15) than the non-negative (count: 12). The class of accessible rural area (Class 5) had the least of both negative and non-negative tweets.

*Table 7. Correlation of negative tweet and rural/urban classification*

Classification	Correlation coefficient	P-value
1	0.029	0.435
2	0.035	0.344
3	0.09	0.802
4	0.031	0.409
5	0.006	0.88
6	0.057	0.13

To verify whether the negative sentiment of each tweet is associated with the area's rural/urban classification, this study ran the Chi-square test. As indicated in Table 7, the correlation coefficients—0.029, 0.035, 0.09, 0.031, 0.006, and 0.057—for all testing groups were positive. The P-values, i.e., 0.435, 0.344, 0.802, 0.409, 0.88, and 0.13, for all the classes were larger than 0.05, indicating there was no significant correlation between the negative sentiment and being rural or urban.

## 4 DISCUSSION AND CONCLUSION

### 4.1 Tweets, Social Network Usage, and Spoken Language

Clustering of the collected tweets in North America and Europe was mainly attributed to the selected English keywords and the countries speaking English. As shown in Table 7 updated in May 2016, the top five countries that have the most number of active Twitter users in leading markets were: United States, India, Indonesia, Japan, and China (Statista 2018). Some non-English spoken countries, such as Japan, China, although they have a large number of active Twitter users, have their own predominant social media platform rather than Twitter. That may explain why there were few tweets existing in those countries.

*Table 8. Official language and prevailing social media platforms for top 5 countries having active Twitter accounts*

Country	Language (Official)	Popular social media platform
U.S.	English	Facebook, Twitter, etc.
India	English	Facebook, YouTube, etc.
Indonesia	Indonesian	YouTube, Facebook, etc.
Japan	Japanese	Line, Twitter, etc.
China	Chinese	WeChat, Weibo, etc.

### 4.2 Mental Health and Human Behaviors

This study identified that most of the negative tweets clustered in the metropolitan areas (Figure 10), indicating that Twitter users in these areas would tweet more event-related messages and have greater concerns than the rest areas. The SatScan program consistently reported the two significant clusters near London and Liverpool, indicating the cluster of fear/sadness had been detected in these areas (Gruebner, Sykora et al. 2016). In this case, Twitter users in these areas have more negative responses regarding the attacks than the other areas.

The negative sentiment triggered by terrorist attacks may result in the abuse of social media (Marino, Gini et al. 2018). Several studies have suggested that there was a strong association between problematic social media use and mental health problems, such as depressive, fear and sadness (Moreau, Laconi et al. 2015, Miskowiak, Larsen et al. 2018). That may explain why there were a lot of identical tweets coming from the same Twitter account. A study suggested that the Post Traumatic Stress Syndrome (PTSS) associating with the terrorist attacks had a long-term mental impact on parents, because they felt guilty for exposing their children to trauma and had to be cautious for the dangers that may affect their children (Thoresen, Jensen et al. 2016).

#### **4.3 Mental Health and Rural/Urban Classification**

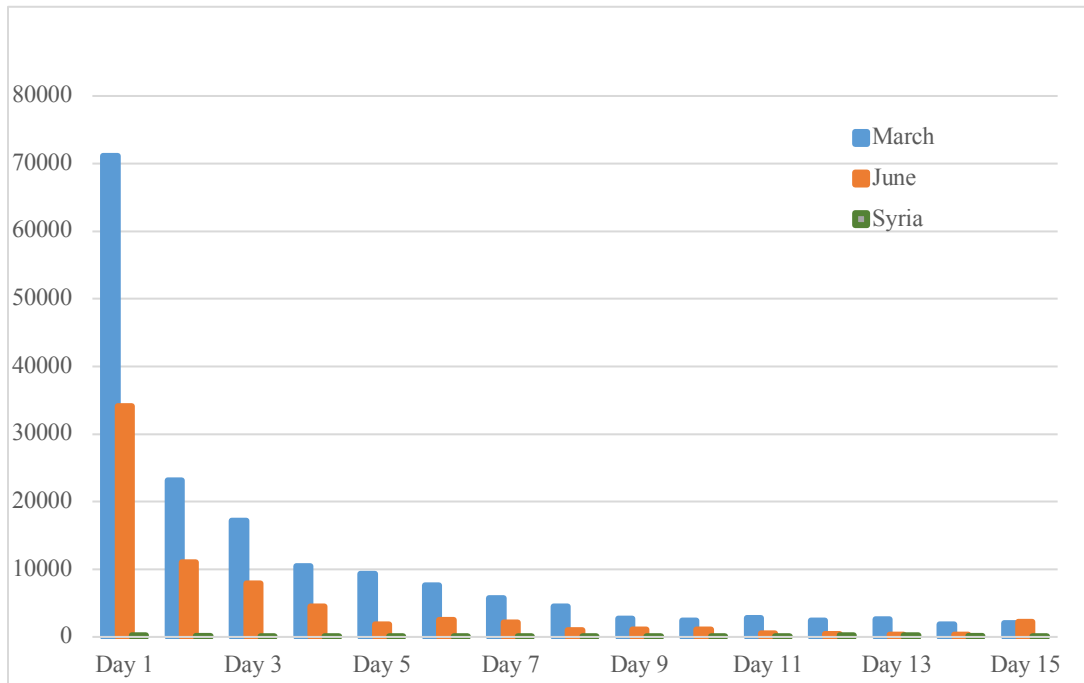
This thesis did not find a significant correlation between the clustering of negative tweets and rural/urban classification. The locations of the two terrorist attacks were both in the city of London. When the terrorist attacks happened, the clustering of messages and news related to the attack was mainly concentrated locally in London and spread out quickly.

The negative tweets were mostly sent from the urban areas in England, and the two most likely clusters also existed in these areas. Nevertheless, the Chi-square test indicated there was no significant correlation between the negative tweets and the rural/urban settings. As discussed before, the urban dwellers in the UK intended to have more depressions than the rural dwellers (Barquero, Muñoz et al. 1982). These urban civilians were at the high risk of being the target for a terrorist attack (Hinkkainen and Pickering 2018). Twitter users in urban areas would have more negative responses to terrorist attack than those in rural areas. This explained why this study identified more negative tweets clustered in the urban areas. However, the variation of social attention may also be associated with the Twitter adoption and user demographics (Philo, Parr et



al. 2003). In this case, while an area’s urban/rural classification may affect its residents’ attention on a social event, the creation of negative tweets won’t be necessarily affected by this setting.

#### 4.4 Social Media Attention to Various Attacks



*Figure 13. Number of tweets related to the attack in U.K. and Syria*

Findings from this study suggested that different countries have various reactions to terrorist attacks around the world. This research found that terrorist attacks in developed countries attracted much more attention than those in developing countries in English-speaking regions. To further confirm this, this study analyzed the social media attention on another attack in Syria. On the 16<sup>th</sup> of April 2017, a suicide car bomber killed and injured at least 100 evacuees as they waited to leave their towns in Syria. This study collected both geotagged tweets and all other tweets related to this attack, containing the keywords “evacuee attack” and “rashidin attack,” between April 17<sup>th</sup> and May 1<sup>st</sup>. Compared to the attacks in U.K. (the total number of tweets was 71,096 in March and 34,112 in June), there were only 1,247 relevant tweets within the first day following the attack in Syria, and most were tweeting the news report without indicating any emotions

(Figure 13). Among these tweets, only one tweet was geotagged. However, it was possible that using Arabic keywords may have collected a larger number of tweets. But the comparison here suggested that attacks in developing countries were unable to draw as much attention as the ones occurring in developed countries. Since Han and others suggested that “Twitter users living in heavily populated areas would have the more geographical awareness of other cities that were far away than those living in less populated areas,” that awareness may be more associated with big cities (Han, Tsou et al. 2015). In other words, if a terrorist attack happened in a big city, instead of one in a small city, the Twitter users living in a populated area would likely pay more attention than the ones living in a less populated area.

#### **4.5 Limitations**

This study may be limited in several aspects. First, it excluded related tweets that didn't have the location information or the selected keywords. Several attempts have been made to retrieve tweets without keywords, yet all the efforts failed due to the rate limit set by Twitter. Second, most tweets were not geotagged. The distribution of negative feelings may be skewed if these non-geotagged tweets would have been geographically located. Third, manually labeling each tweet as negative or non-negative is subjective, and the classification may be changed if the results had been verified by others. The negative sentiment analysis would vary due to the differences in labeling tweets, and the manual label method could only be applied to a small number of study objects. Fourth, the results would vary if the search criteria were modified to collect data from another social network or in another language. The variability and unpredictability of human behaviors, as well as the differences between countries, were also factors that need further research. Last but not the least, due to the large differences on demographics of Twitter users in different countries, many studies have suggested that Twitter

data is not suitable for any research where representativeness is important (Sloan and Morgan 2015, Sloan, Morgan et al. 2015, Blank 2017, Blank and Lutz 2017). Findings in this study therefore are typically applied only to Twitter users.

Understanding the concentrated emotional reactions in real-time after a disaster is critical to provide guidance for the provision of mental health services (Whalley and Brewin 2007, Gruebner, Sykora et al. 2016). This study, in general, made a contribution in this regard by identifying the clusters of emotional reactions in space and time based on recorded geotagged social media data. The results indicated that the terrorist attacks, especially the one in March, had significant impacts on public's emotional responses. The two attacks both occurred in England, making this place to generate the most tweets. The negative tweets were mostly generated in the urban area, with one cluster being detected three days after the attack, and the other cluster being detected ten days after the attack. Although the negative tweets were associated with urban areas, there was no significant correlation between negative tweets and the area's urban/rural setting. This study used GIS in social media analysis to identify the emotional impact after disasters. Future research would need to find a solution using a bounding box, not keywords, to retrieve data. A bounding box can help to restrict the target area based on the need of the study, and all tweets sent from that area could be collected. This is helpful when the study site is a small specific area. Researchers also need to come up with a way to bypass the Twitter limit error to fully use Twitter API.

## REFERENCES

- Agustian, D., J. R. Rodd, E. Lawrence and H. Reed (2012). "Comparison of normal and bernoulli model of spatial scan statistic to detect localized disease clusters." *American Journal of Epidemiology* 175: S116-S116.
- Allan, R., P. Williamson and H. Kulu (2017). "Unravelling urban-rural health disparities in England." *Population Space and Place* 23(8).
- Angresti, A. (2007). "An introduction to Categorical Data Analysis." John Wiley & Sons Hoboken, NJ.
- Azage, M., A. Kumie, A. Worku and A. C. Bagtzoglou (2015). "Childhood diarrhea exhibits spatiotemporal variation in Northwest Ethiopia: A satscan spatial statistical analysis." *Plos One* 10(12).
- Bai, H. and G. Yu (2016). "A Weibo-based approach to disaster informatics: incidents monitor in post-disaster situation via Weibo text negative sentiment analysis." *Natural Hazards* 83(2): 1177-1196.
- Barquero, J. L. V., P. E. Muñoz and V. M. Jaúregui (1982). "The influence of the process of urbanization on the prevalence of neurosis." *Acta Psychiatrica Scandinavica* 65(3): 161-170.
- Barros, C. P., I. Proenca, J. R. Faria and L. A. Gil-Alana (2007). "Are USA citizens at risk of terrorism in Europe?" *Defence and Peace Economics* 18(6): 495-507.
- Beaudoin, C. E. and E. Thorson (2004). "Social capital in rural and urban communities: Testing differences in media effects and models." *Journalism & Mass Communication Quarterly* 81(2): 378-399.
- Blank, G. (2017). "The digital divide among twitter users and its implications for social research." *Social Science Computer Review* 35(6): 679-697.
- Blank, G. and W. H. Dutton (2012). "Age and trust in the Internet: The centrality of experience and attitudes toward technology in Britain." *Social Science Computer Review* 30(2): 135-151.
- Blank, G. and C. Lutz (2017). "Representativeness of social media in Great Britain: Investigating Facebook, LinkedIn, Twitter, Pinterest, Google plus, and Instagram." *American Behavioral Scientist* 61(7): 741-756.
- Bleich, A., M. Gelkopf, Y. Melamed and Z. Solomon (2006). "Mental health and resiliency following 44 months of terrorism: A survey of an Israeli national representative sample." *Bmc Medicine* 4.
- Boscarino, J. A., S. Galea, J. Ahern, H. Resnick and D. Vlahov (2002). "Mental health utilization in Manhattan following the September 11th terrorist attacks." *American Journal of Epidemiology* 155(11): s89-s89.
- Chavez, L. J., K. J. Kelleher, S. C. Matson, T. M. Wickizer and D. J. Chisolm (2018). "Mental health and substance use care among young adults before and after Affordable Care Act (ACA) implementation: A rural and urban comparison." *Journal of Rural Health* 34(1): 42-47.
- Chen, X. N., G. Elmes, X. Y. Ye and J. H. Chang (2016). "Implementing a real-time Twitter-based system for resource dispatch in disaster management." *Geojournal* 81(6): 863-873.
- Developer, T. (2018). "Filtering tweets by location." Retrieved April 21, 2018, from <https://developer.twitter.com/en/docs/tutorials/filtering-tweets-by-location>.

- Dohrenwend, B. P. (1975). "Sociocultural and social-psychological factors in the genesis of mental disorders." *Journal of Health and Social Behavior* 16(4): 365-392.
- Dong, H., M. Halem, S. J. Zhou, I. C. Soc, S. Acad and Engn (2013). "Social media data analytics applied to Hurricane Sandy." 2013 Ase/IEEE International Conference on Social Computing (Socialcom): 963-966.
- Dorsey, J. (2006). "Twitter." Retrieved April 21, 2018, from <https://twitter.com/>.
- Draca, M., S. Machin and R. Witt (2011). "Panic on the streets of London: Police, Crime, and the July 2005 terror attacks." *American Economic Review* 101(5): 2157-2181.
- Drakos, K. and C. Muller (2011). "Terrorism risk concern in Europe." *Economics Letters* 112(2): 195-197.
- Dutton, W. H., G. Blank and D. Grosej (2013). "Cultures of the Internet: The Internet in Britain." Retrieved April 21, 2018, from <http://oxis.oii.ox.ac.uk/wp-content/uploads/2014/11/OxIS-2013.pdf>.
- Engene, J. O. (2007). "Five decades of terrorism in Europe: The TWEED dataset." *Journal of Peace Research* 44(1): 109-121.
- Federal Bureau of Investigation (2018). "Terrorism." Retrieved April 21, 2018, from <https://www.fbi.gov/investigate/terrorism>.
- Fernandez-Gavilanes, M., T. Alvarez-Lopez, J. Juncal-Martinez, E. Costa-Montenegro and F. J. Gonzalez-Castano (2016). "Unsupervised method for sentiment analysis in online texts (vol 58, pg 57, 2016)." *Expert Systems with Applications* 61: 394-394.
- Ficamos, P. and Y. Liu (2016). "A topic based approach for sentiment analysis on Twitter data." *International Journal of Advanced Computer Science and Applications* 7(12): 201-205.
- Fischer, P., T. Postmes, J. Koepl, L. Conway and T. Fredriksson (2011). "The meaning of collective terrorist threat: Understanding the subjective causes of terrorism reduces its negative psychological impact." *Journal of Interpersonal Violence* 26(7): 1432-1445.
- Giatsoglou, M., M. G. Vozalis, K. Diamantaras, A. Vakali, G. Sarigiannidis and K. C. Chatzisavvas (2017). "Sentiment analysis leveraging emotions and word embeddings." *Expert Systems with Applications* 69: 214-224.
- Gilbert, E., K. Karahalios and C. Sandvig (2010). "The network in the garden: Designing social media for rural life." *American Behavioral Scientist* 53(9): 1367-1388.
- Go, A., R. Bhayani and L. Huang (2009). "Twitter sentiment classification using distant supervision." Retrieved April 22, from <http://www.stanford.edu/~alecmgo/papers/TwitterDistantSupervision09.pdf>.
- Goldman, O. (2011). "The globalization of terror attacks." *Terrorism and Political Violence* 23(1): 31-59.
- Gruebner, O., M. Sykora, S. R. Lowe, K. Shankardass, L. Trinquart, T. Jackson, S. V. Subramanian and S. Galea (2016). "Mental health surveillance after the terrorist attacks in Paris." *Lancet* 387(10034): 2195-2196.
- Gu, Y. M., Z. Qian and F. Chen (2016). "From Twitter to detector: Real-time traffic incident detection using social media data." *Transportation Research Part C-Emerging Technologies* 67: 321-342.

- Gu, Y. Y., C. Kallas, J. Zhang, J. Marx and J. Tjoe (2013). "Automatic patient search using bernoulli model." 2013 Ieee International Conference on Healthcare Informatics (Ichi 2013): 517-522.
- Guang, Y., Z. Z. Feng, G. Y. Yang, Y. L. Yang, L. F. Wang, Q. Dai, C. B. Hu, K. Y. Liu, R. Zhang, F. Xia and M. X. Zhao (2017). "Depressive symptoms and negative life events: What psycho-social factors protect or harm left-behind children in China?" *Bmc Psychiatry* 17.
- Han, S. Y., M.-H. Tsou and K. C. Clarke (2015). "Do global cities enable global views? Using Twitter to quantify the level of geographical awareness of U.S. Cities." *PLOS ONE* 10(7): e0132464.
- Hargittai, E. (2015). "Is bigger always better? Potential biases of big data derived from social network sites." *The ANNALS of the American Academy of Political and Social Science* 659(1): 63-76.
- Harsh, T. and P. Dhiren (2016). "Approachers for sentiment analysis on Twitter: A state-of-art study." Retrieved March 25, 2018, from <https://arxiv.org/pdf/1512.01043.pdf>.
- Herbert, C., K. Hesse and D. Wildgruber (2018). "Emotion and self in psychotic disorders: Behavioral evidence from an emotional evaluation task using verbal stimuli varying in emotional valence and self-reference." *Journal of Behavior Therapy and Experimental Psychiatry* 58: 86-96.
- Hinkkainen, K. and S. Pickering (2018). "Strategic risk of terrorist targets in urban vs. rural locations." Retrieved April 21, 2018, from [http://www.michael-findley.com/uploads/2/0/4/5/20455799/kaisasteve\\_v1.pdf](http://www.michael-findley.com/uploads/2/0/4/5/20455799/kaisasteve_v1.pdf).
- Huq, M. R., A. Ali and A. Rahman (2017). "Sentiment analysis on twitter data using KNN and SVM." *International Journal of Advanced Computer Science and Applications* 8(6): 19-25.
- Jasso, H., W. Hodgkiss, C. Baru, T. Fountain, D. Reich and K. Warner (2009). "Using 9-1-1 call data and the space-time permutation scan statistic for emergency event detection." *Government Information Quarterly* 26(2): 265-274.
- Ji, R. R., D. L. Cao, Y. Y. Zhou and F. H. Chen (2016). "Survey of visual sentiment prediction for social media analysis." *Frontiers of Computer Science* 10(4): 602-611.
- Kanchanatawan, B., S. Sirivichayakul, A. F. Carvalho, G. Anderson, P. Galecki and M. Maes (2018). "Depressive, anxiety and hypomanic symptoms in schizophrenia may be driven by tryptophan catabolite (TRYCAT) patterning of IgA and IgM responses directed to TRYCATs." *Progress in Neuro-Psychopharmacology & Biological Psychiatry* 80: 205-216.
- Katkina, A. N. (2015). "The role of social media in the political life of modern great britain." *Tomsk State University Journal*(398): 109-112.
- Kaur, H. J., R. Kumar and Ieee (2015). "Sentiment analysis from social media in crisis situations." 2015 International Conference on Computing, Communication & Automation (Iccca): 251-256.
- Khan, F. H., U. Qamar and S. Bashir (2016). "eSAP: A decision support framework for enhanced sentiment analysis and polarity classification." *Information Sciences* 367: 862-873.
- Khan, F. H., U. Qamar and S. Bashir (2016). "Senti-CS: Building a lexical resource for sentiment analysis using subjective feature selection and normalized Chi-Square-based feature weight generation." *Expert Systems* 33(5): 489-500.
- Kim, E. H. J., Y. K. Jeong, Y. Y. Kim, K. Y. Kang and M. Song (2016). "Topic-based content and sentiment analysis of Ebola virus on Twitter and in the news." *Journal of Information Science* 42(6): 763-781.

- Kim, Y. K. and K. S. Na (2018). "Application of machine learning classification for structural brain MRI in mood disorders: Critical review from a clinical perspective." *Progress in Neuro-Psychopharmacology & Biological Psychiatry* 80: 71-80.
- Kulldorff, M. (1997). "Bernoulli, Discrete Poisson and Continuous Poisson Models." *Communications in Statistics: Theory and Methods* 26: 1481-1496.
- Kulldorff, M. (1997). "A spatial scan statistic." *Communications in statistics-theory and methods* 26(6): 1481-1496.
- Kulldorff M, Heffernan R, Hartman J, Assunção RM and M. F. ( 2005). "Space-time Permutation model: Kulldorff M, Heffernan R, Hartman J, Assunção RM, Mostashari F. A space-time permutation scan statistic for the early detection of disease outbreaks. " *PLoS Medicine*: 216-224.
- Landwehr, P. M., W. Wei, M. Kowalchuck and K. M. Carley (2016). "Using tweets to support disaster planning, warning and response." *Safety Science* 90: 33-47.
- Li, L., M. F. Goodchild and B. Xu (2013). "Spatial, temporal, and socioeconomic patterns in the use of Twitter and Flickr." *Cartography and Geographic Information Science* 40(2): 61-77.
- Li, X. X., C. Jiang, H. Yu and J. Sui (2010). "A Space-time permutation scan statistic for decision support system of biochemical terror events." *Proceedings of the International Symposium on Emergency Management 2010*: 380-383.
- Lin, X. L., K. A. Lachlan and P. R. Spence (2016). "Exploring extreme events on social media: A comparison of user reposting/retweeting behaviors on Twitter and Weibo." *Computers in Human Behavior* 65: 576-581.
- Ma, D., M. Sandberg and B. Jiang (2017). "A Socio-geographic perspective on human activities in social media." *Geographical Analysis* 49(3): 328-342.
- Marino, C., G. Gini, A. Vieno and M. M. Spada (2018). "The associations between problematic Facebook use, psychological distress and well-being among adolescents and young adults: A systematic review and meta-analysis." *Journal of Affective Disorders* 226: 274-281.
- Martin, M. E. and N. Schuurman (2017). "Area-based topic modeling and visualization of social media for Qualitative GIS." *Annals of the American Association of Geographers* 107(5): 1028-1039.
- Massey, P. M., A. Leader, E. Yom-Tov, A. Budenz, K. Fisher and A. C. Klassen (2016). "Applying multiple data collection tools to quantify human papillomavirus vaccine communication on Twitter." *Journal of Medical Internet Research* 18(12): 173-183.
- Medhat, W., A. Hassan and H. Korashy (2014). "Sentiment analysis algorithms and applications: A survey." *Ain Shams Engineering Journal* 5(4): 1093-1113.
- Miskowiak, K. W., J. E. Larsen, C. J. Harmer, H. R. Siebner, L. V. Kessing, J. Macoveanu and M. Vinberg (2018). "Is negative self-referent bias an endophenotype for depression? An fMRI study of emotional self-referent words in twins at high vs. low risk of depression." *Journal of Affective Disorders* 226: 267-273.
- Moreau, A., S. Laconi, M. Delfour and H. Chabrol (2015). "Psychopathological profiles of adolescent and young adult problematic Facebook users." *Computers in Human Behavior* 44: 64-69.

- Neff, J. A. (1983). "Urbanicity and depression reconsidered: The evidence regarding depressive symptomatology." *Journal of Nervous and Mental Disease* 171(9): 546-552.
- Neppalli, V. K., C. Caragea, A. Squicciarini, A. Tapia and S. Stehle (2017). "Sentiment analysis during Hurricane Sandy in emergency response." *International Journal of Disaster Risk Reduction* 21: 213-222.
- Northern Ireland Statistics and Research Agency (2015). "Urban-rural classification." Retrieved April 21, 2018, from <https://www.nisra.gov.uk/urban-rural-classification>.
- Nugent, J. L., A. S. Khashan and P. N. Baker (2011). "Reduced infant birth weight in the North West of England consequent upon 'maternal exposure' to 7/7 terrorist attacks on central London." *Journal of Obstetrics and Gynaecology* 31(2): 118-121.
- Office for National Statistics (2016). "Rural urban classification." Retrieved April 21, 2018, from <https://www.ons.gov.uk/methodology/geography/geographicalproducts/ruralurbanclassifications>.
- Office for National Statistics (2017). "Rural urban classification (2001) of output areas in England and Wales." Retrieved April 21, 2018, from <https://ons.maps.arcgis.com/home/item.html?id=7adcd11fff60422da067b3d4858a9de9>.
- Oscar, N., P. A. Fox, R. Croucher, R. Wernick, J. Keune and K. Hooker (2017). "Machine learning, sentiment analysis, and tweets: An examination of alzheimer's disease stigma on Twitter." *Journals of Gerontology Series B-Psychological Sciences and Social Sciences* 72(5): 742-751.
- Padmanabhan, A., S. Wang, G. Cao, M. Hwang, Z. Zhang, Y. Gao, K. Soltani and Y. Liu (2014). "FluMapper: A cyberGIS application for interactive analysis of massive location - based social media." *Concurrency and Computation: Practice and Experience* 26(13): 2253-2265.
- Padrez, K. A., L. Ungar, H. A. Schwartz, R. J. Smith, S. Hill, T. Antanavicius, D. M. Brown, P. Crutchley, D. A. Asch and R. M. Merchant (2016). "Linking social media and medical record data: A study of adults presenting to an academic, urban emergency department." *BMJ Quality & Safety* 25(6): 414-423.
- Paltoglou, G. (2016). "Sentiment-based event detection in Twitter." *Journal of the Association for Information Science and Technology* 67(7): 1576-1587.
- Panagiotopoulos, P., J. Barnett, A. Z. Bigdeli and S. Sams (2016). "Social media in emergency management: Twitter as a tool for communicating risks to the public." *Technological Forecasting and Social Change* 111: 86-96.
- Park, R., T. F. O'Brien, S. S. Huang, M. A. Baker, D. S. Yokoe, M. Kulldorff, C. Barrett, J. Swift, J. Stelling and P. Ctr Dis Control (2016). "Statistical detection of geographic clusters of resistant *Escherichia coli* in a regional network with WHONET and SaTScan." *Expert Review of Anti-Infective Therapy* 14(11): 1097-1107.
- Paykel, E. S., R. Abbott, R. Jenkins, T. S. Brugha and H. Meltzer (2000). "Urban-rural mental health differences in Great Britain: findings from the National Morbidity Survey." *Psychological Medicine* 30(2): 269-280.
- Pearce, K. E. and R. E. Rice (2013). "Digital divides from access to activities: Comparing mobile and personal computer internet users." *Journal of Communication* 63(4): 721-744.



- Philo, C., H. Parr and N. Burns (2003). "Rural madness: A geographical reading and critique of the rural mental health literature." *Journal of Rural Studies* 19(3): 259-281.
- Ranney, M. L., B. Chang, J. R. Freeman, B. Norris, M. Silverberg and E. K. Choo (2016). "Tweet now, see you in the ED later? Examining the association between alcohol-related tweets and emergency care visits." *Academic Emergency Medicine* 23(7): 831-834.
- Rico, G., M. Guinjoan and E. Anduiza (2017). "The emotional underpinnings of populism: How anger and fear affect populist attitudes." *Swiss Political Science Review* 23(4): 444-461.
- Ripper, C. A., M. E. Boyes, P. J. F. Clarke and P. A. Hasking (2018). "Emotional reactivity, intensity, and perseveration: Independent dimensions of trait affect and associations with depression, anxiety, and stress symptoms." *Personality and Individual Differences* 121: 93-99.
- Rodrigues, D., D. Lopes, M. Prada, D. Thompson and M. V. Garrido (2017). "A frown emoji can be worth a thousand words: Perceptions of emoji use in text messages exchanged between romantic partners." *Telematics and Informatics* 34(8): 1532-1543.
- Roser, M., M. Nagdy and H. Ritchie (2013). "Terrorism." Retrieved April 21, 2018, from <https://ourworldindata.org/terrorism>.
- Rubin, B. and D. MacFarlane (2008). "Using the space-time permutation scan statistic to map anomalous diameter distributions drawn from landscape-scale forest inventories." *Forest Science* 54(5): 523-533.
- Salas-Zarate, M. D., J. Medina-Moreira, K. Lagos-Ortiz, H. Luna-Aveiga, M. A. Rodriguez-Garcia and R. Valencia-Garcia (2017). "Sentiment analysis on tweets about diabetes: An aspect-level approach." *Computational and Mathematical Methods in Medicine*.
- Salerno, D. (2017). "The politics of response to terror: The reshaping of community and immunity in the aftermath of 7 July 2005 London bombings." *Social Semiotics* 27(1): 81-106.
- Salib, E. and M. Cortina-Borja (2009). "Effect of 7 July 2005 terrorist attacks in London on suicide in England and Wales." *British Journal of Psychiatry* 194(1): 80-85.
- Sameem, S. and K. Sylwester (2018). "Crime during the business cycle: urban-rural differences." *Applied Economics* 50(22): 2500-2508.
- Schumaker, R. P., A. T. Jarmoszko and C. S. Labeledz (2016). "Predicting wins and spread in the premier league using a sentiment analysis of twitter." *Decision Support Systems* 88: 76-84.
- Shao, H., Y. Zhang and W. W. Li (2017). "Extraction and analysis of city's tourism districts based on social media data." *Computers Environment and Urban Systems* 65: 66-78.
- Shekhar, H. and S. Setty (2015). "Disaster analysis through tweets." 2015 International Conference on Advances in Computing, Communications and Informatics (Icacci): 1719-1723.
- Sherman, R. L., K. A. Henry, S. L. Tannenbaum, D. J. Feaster, E. Kobetz and D. J. Lee (2014). "Applying spatial analysis tools in public health: An example using satscan to detect geographic targets for colorectal cancer screening interventions." *Preventing Chronic Disease* 11.
- Shook, E., K. Leetaru, G. Cao, A. Padmanabhan and S. Wang (2012). "Happy or not: Generating topic-based emotional heatmaps for culturomics using CyberGIS." 2012 IEEE 8th International Conference on E-Science.

- Simcox, R. (2017, 9/19/2017). "Why Britain it the perfect terror target." Retrieved April 19, 2018, from <https://www.heritage.org/terrorism/commentary/why-britain-the-perfect-terror-target>.
- Simon, T., A. Goldberg, L. Aharonson-Daniel, D. Leykin and B. Adini (2014). "Twitter in the cross fire-The use of social media in the Westgate Mall terror attack in Kenya." *Plos One* 9(8).
- Sloan, L. and J. Morgan (2015). "Who tweets with their location? Understanding the relationship between demographic characteristics and the use of geoservices and geotagging on Twitter." *PLOS ONE* 10(11): e0142209.
- Sloan, L., J. Morgan, P. Burnap and M. Williams (2015). "Who tweets? Deriving the demographic characteristics of age, occupation and social class from Twitter user meta-data." *PLoS ONE* 10(3): e0115545.
- Sloan, L., J. Morgan, W. Housley, M. Williams, A. Edwards, P. Burnap and O. Rana (2013). "Knowing the tweeters: Deriving sociologically relevant demographics from twitter." Retrieved April 20, 2018, from <http://www.socresonline.org.uk/18/3/7/html>.
- Smock, J. A., D. R. Black and J. E. Dietz (2012). "A demonstration of social media research methods: Investigating the public opinion of the flu shot during the h1n1 pandemic." *Pandemic Planning*: 183-197.
- Solana, M. Y. M., A. G. F. Nogueira and K. P. Valarezo (2017). "Communication of crisis management at the United Kingdom 2017's attacks. Proposal for a protocol 2.0 for the communication of crisis." *Revista Latina De Comunicacion Social* 72(14): 566-591.
- Spitzberg, B. H., M.-H. Tsou, D. K. Gupta, L. An, J. M. Gawron and D. Lusher (2012). "The map is not which territory ? : Speculating on the geo - spatial diffusion of ideas in the Arab spring of 2011."
- Statista. (2017). "Number of monthly active Instagram users from January 2013 to September 2017 (in millions)." Retrieved March 13, 2018, from <https://www.statista.com/statistics/253577/number-of-monthly-active-instagram-users/>.
- Statista. (2017). "Number of terrorist attacks in the European Union (EU) In 2016, by member." Retrieved March 13, 2018, from <https://www.statista.com/statistics/746674/number-of-terrorist-attacks-in-the-european-union-eu/>.
- Statista. (2018). "Number of active Twitter users in leading markets as of May 2016 (in millions)." from <https://www.statista.com/statistics/242606/number-of-active-twitter-users-in-selected-countries/>.
- Stecklov, G. and J. R. Goldstein (2004). "Terror attacks influence driving behavior in Israel." *Proceedings of the National Academy of Sciences of the United States of America* 101(40): 14551-14556.
- Stelling, J., W. K. Yih, M. Galas, M. Kulldorff, M. Pichel, R. Terragno, E. Tuduri, S. Espetxe, N. Binsztein, T. F. O'Brien, R. Platt and W.-A. Collaborative Grp (2010). "Automated use of WHONET and SaTScan to detect outbreaks of *Shigella* spp. using antimicrobial resistance phenotypes." *Epidemiology and Infection* 138(6): 873-883.
- Suprageography. (2016). "Population density and urban/rural split of the UK." Retrieved April 9, 2018, from <http://oobrien.com/2016/09/density/>.

- Sykora, M. D., T. W. Jackson, A. O'Brien and S. Elayan (2013). "Emotive ontology: Extracting fine-grained emotions from terse, informal messages." *IADIS International Journal on Computer Science and Information Systems* Vol. 8, No. 2, pp. 106-118.
- Systrom, K. and M. Krieger (2010). "Instagram." Retrieved April 18, 2018, from [www.instagram.com](http://www.instagram.com).
- Tang, K. P., J. Lin, J. I. Hong, D. P. Siewiorek and N. Sadeh (2010). "Rethinking location sharing: Exploring the implications of social-driven vs. purpose-driven location sharing." *Proceedings of the 12th ACM international conference on Ubiquitous computing*. Copenhagen, Denmark, ACM: 85-94.
- Tasse, D., Z. Liu, A. Sciuto and J. I. Hong (2017). "State of the geotags: Motivations and recent changes." *ICWSM*.
- Thirthalli, J., K. S. Reddy, M. Kare, S. Das and B. N. Gangadhar (2017). "Rural-urban differences in accessing mental health treatment in patients with psychosis." *International Journal of Social Psychiatry* 63(8): 694-698.
- Thoresen, S., T. K. Jensen, T. Wentzel-Larsen and G. A. Dyb (2016). "Parents of terror victims. A longitudinal study of parental mental health following the 2011 terrorist attack on Utoya Island, Norway." *International Journal of Psychology* 51: 959-959.
- Tsou, M.-H. (2015). "Research challenges and opportunities in mapping social media and Big Data." *Cartography and Geographic Information Science* 42(sup1): 70-74.
- Tsou, M.-H., J.-A. Yang, D. Lusher, S. Han, B. Spitzberg, J. M. Gawron, D. Gupta and L. An (2013). "Mapping social activities and concepts with social media (Twitter) and web search engines (Yahoo and Bing): A case study in 2012 US Presidential Election." *Cartography and Geographic Information Science* 40(4): 337-348.
- Twitter (2018). "Tweepy API." Retrieved March 22, 2018, from <http://docs.tweepy.org/en/v3.5.0/api.html>.
- Twitter. (2018). "Tweet location FAQs." Retrieved March 21, 2018, from <https://help.twitter.com/en/safety-and-security/tweet-location-settings>.
- Uchida, O., M. Kosugi, G. Endo, T. Funayama, K. Utsu, S. Tajima, M. Tomita, Y. Kajita and Y. Yamamoto (2016). "A real-time information sharing system to support self-, mutual-, and public-help in the aftermath of a disaster utilizing twitter." *Ieice Transactions on Fundamentals of Electronics Communications and Computer Sciences* E99A(8): 1551-1554.
- Ukkusuri, S. V., X. Y. Zhan, A. M. Sadri and Q. Ye (2014). "Use of social media data to explore crisis informatics study of 2013 Oklahoma Tornado." *Transportation Research Record*(2459): 110-118.
- Wang, Y., Y. C. Chen, H. W. Shen and N. Morrow-Howell (2018). "Neighborhood and depressive symptoms: A comparison of rural and urban Chinese older adults." *Gerontologist* 58(1): 68-78.
- Wang, Y. D., T. Wang, X. Y. Ye, J. Q. Zhu and J. Lee (2016). "Using social media for emergency response and urban sustainability: A case study of the 2012 Beijing Rainstorm." *Sustainability* 8(1).
- Wang, Z. Y., X. Y. Ye and M. H. Tsou (2016). "Spatial, temporal, and content analysis of Twitter for wildfire hazards." *Natural Hazards* 83(1): 523-540.
- Wei, Y. Y., J. B. Li, H. L. Wang and G. H. Wang (2018). "NUCB2/nesfatin-1: Expression and functions in the regulation of emotion and stress." *Progress in Neuro-Psychopharmacology & Biological Psychiatry* 81: 221-227.

- Whalley, M. G. and C. R. Brewin (2007). "Mental health following terrorist attacks." *British Journal of Psychiatry* 190: 94-96.
- Zhao, B., D. Z. Sui and Z. H. Li (2017). "Visualizing the gay community in Beijing with location-based social media." *Environment and Planning A* 49(5): 977-979.
- Zuckberg, M., E. Saverin, A. McCollum, D. Moskovitz and C. Hughes (2004). "Facebook." Retrieved April 21, 2018, from <https://www.facebook.com/>.