


8-28-1977

Twin Buttes Quadrangle, Nebraska— Garden Co. 7.5 minute series (topographic)

Robert Diffendal

University of Nebraska-Lincoln, rdiffendal1@unl.edu

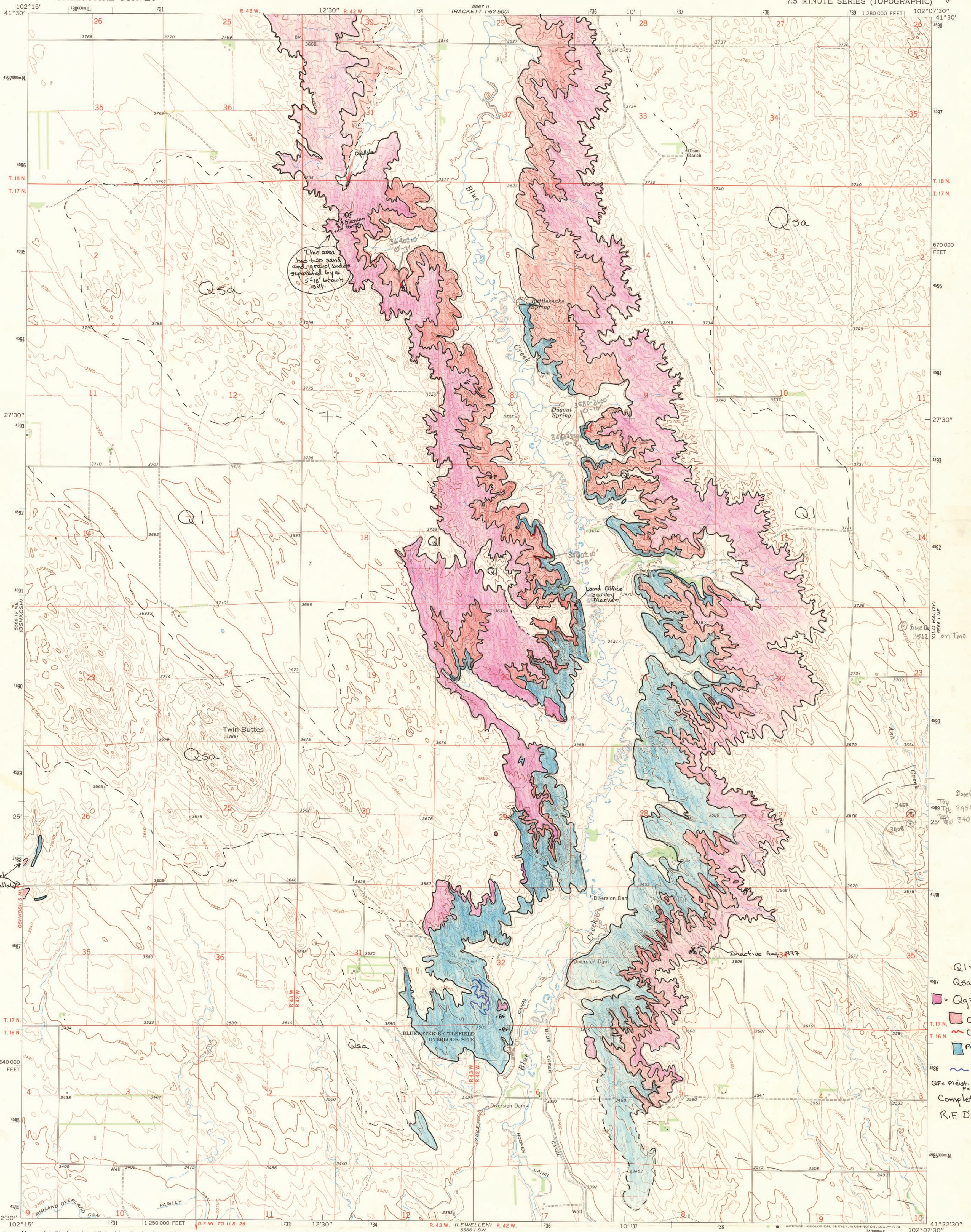
Follow this and additional works at: <http://digitalcommons.unl.edu/diffendal>

 Part of the [Geology Commons](#), [Geomorphology Commons](#), [Hydrology Commons](#), and the [Stratigraphy Commons](#)

Diffendal, Robert, "Twin Buttes Quadrangle, Nebraska— Garden Co. 7.5 minute series (topographic)" (1977). *Robert F. Diffendal, Jr., Publications*. 90.

<http://digitalcommons.unl.edu/diffendal/90>

This Article is brought to you for free and open access by the Natural Resources, School of at DigitalCommons@University of Nebraska - Lincoln. It has been accepted for inclusion in Robert F. Diffendal, Jr., Publications by an authorized administrator of DigitalCommons@University of Nebraska - Lincoln.



This area has two sand and gravel beds deposited by a 5-10' broad river.

Sands & Gravel
(May not be Ogallala)

Base Q
Top 3450±
25' 3406
Tm Ogallala

- Q1 = Loess
 - Qsa = Sand
 - Qq = Sand & Gravel
 - Ogallala Outcrop
 - Ogallala Volcanic Ash
 - Pre-Ogallala (Brule?) Outcrop
 - Pre-Ogallala (Brule?) White Horizons
 - QF = Pleist. Fossil BF = Brule Fossil F = Ogallala Fossil
- Completed 28 Aug. 1977
R.F. Diffendal, Jr.

Mapped, edited, and published by the Geological Survey

Control by USGS and USC&GS
Topography by photogrammetric methods from aerial photographs taken 1969-70. Field checked 1971

SCALE 1:24 000
1 000 0 1000 2000 3000 4000 5000 6000 7000 FEET

ROAD CLASSIFICATION
Primary highway, hard surface
Light-duty road, hard or improved surface

TWIN BUTTES
5566 IV NE
1:62,500

TWIN BUTTES
5566 IV NE
1:62,500