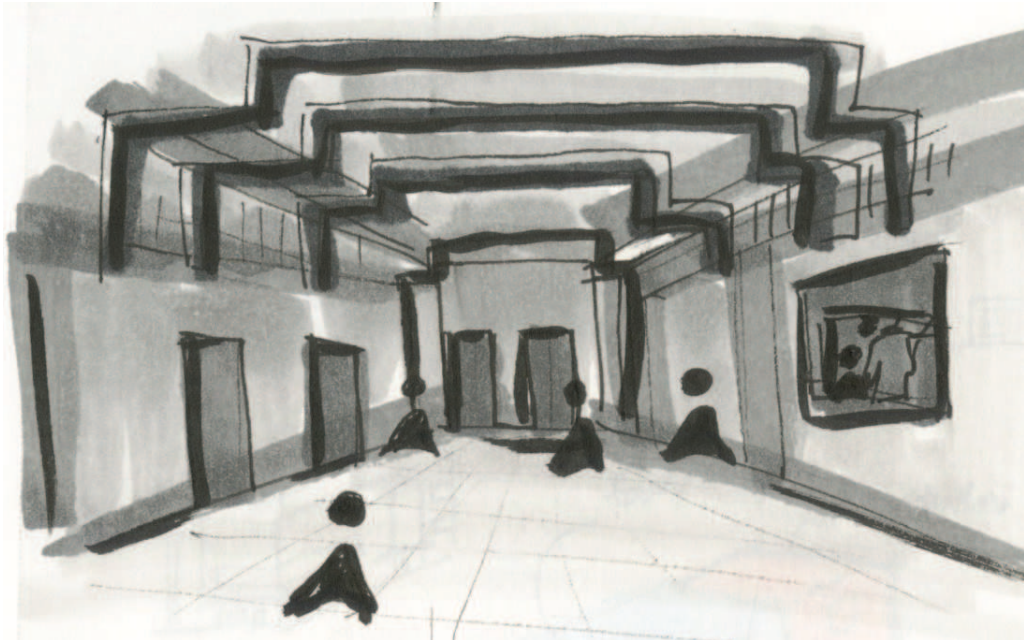


MADELEINE DEVALL

CLUB RISD CLUB

KNOW OPEN NOW



RISD CLUB

Master's of Design, Interior Architecture

Madeleine Devall

RISD CLUB

A thesis submitted in partial fulfillment of the requirements for the degree Master of Design in Interior Studies [Adaptive Reuse] in the Department of Interior Architecture of the Rhode Island School of Design

By
Madeleine Devall

2017

Approved by Master's Examination Committee:

Jonathan Bell
Critic, Department of Interior Architecture, Thesis Advisor

Heinrich Hermann
Critic, Department of Interior Architecture, Thesis Advisor

Wolfgang Rudolf
Assistant Professor, Department of Interior Architecture, Thesis Chair

Hotel
www

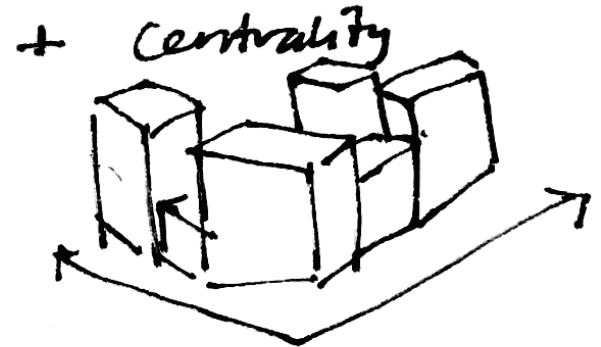
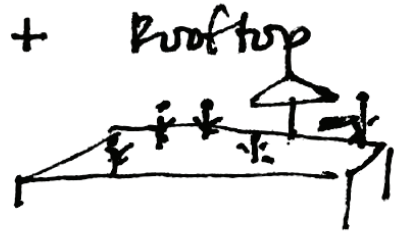


TABLE OF CONTENTS

Glossary of Terms	11
Abstract	13
Artist Societies & University Clubs	14
Pioneer Works	16
Neue House	18
Soho House	20
Harvard Club	23
Site	24
Centrality on Campus	26
Proximity to Rhode Island School of Design Museum	29
Existing Architecture	30
Theatre	32
Film, Animation, Video	35
Old + New	36
Harrlemmerbuurt	38
Rotterman Flour	40
Fine Arts Museum of Asturias	43
Glass Insertion	44
Canadian Museum of Nature	46
Fahle House	48
The Wythe Hotel	50

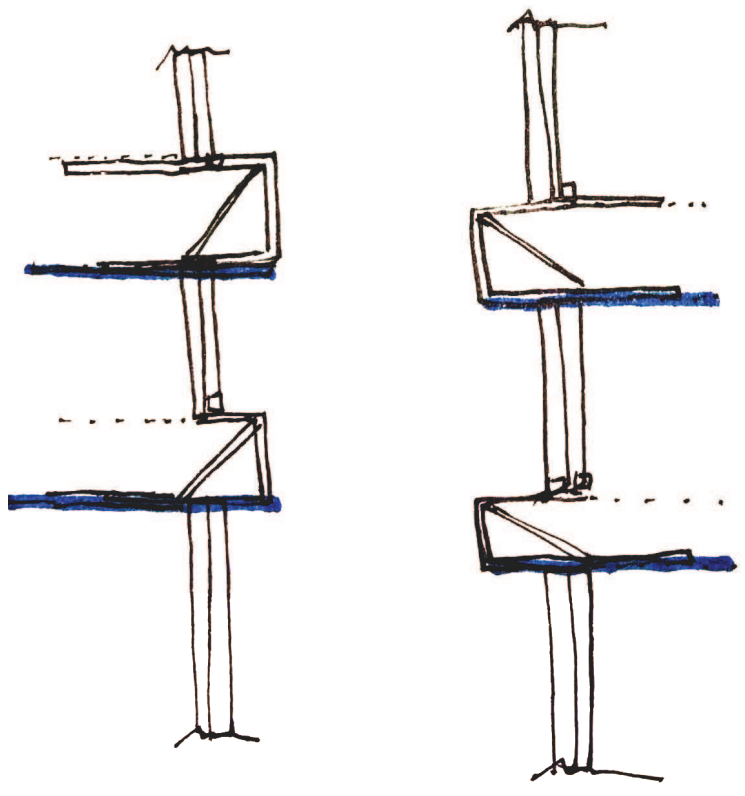
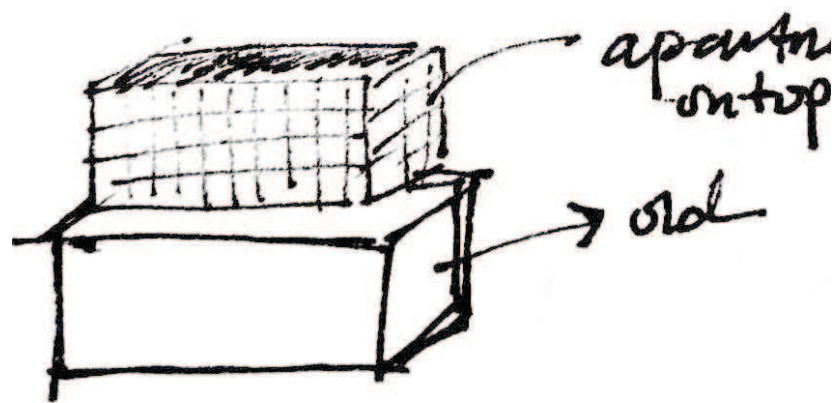


TABLE OF CONTENTS

Intervention	53
RISD Club	54
Program	57
Views of Downtown	66
Fly Tower	68
New Entrance	70
Rooftop Restaurant & Bar	72
Hotel	74
Bibliography	77
Dedications	79



GLOSSARY OF TERMS

Luxury:

1. a condition of abundance or great ease and comfort : sumptuous environment
2. a) something adding to pleasure or comfort but not absolutely necessary
b) an indulgence in something that provides pleasure, satisfaction, or ease

Privilege:

1. a right or immunity granted as a peculiar benefit, advantage, or favor : prerogative; especially : such a right or immunity attached specifically to a position or an office

Network:

1. a group of people sharing a common interest and relating to each other socially

Exclusivity:

1. the quality or state of being limited to possession, control, or use by a single individual or group
2. a) acceptance or solicitation only a socially restricted patronage
b) stylish, fashionable
c) restriction in distribution, use, or appeal because of expense
3. a) single, sole
b) whole, undivided

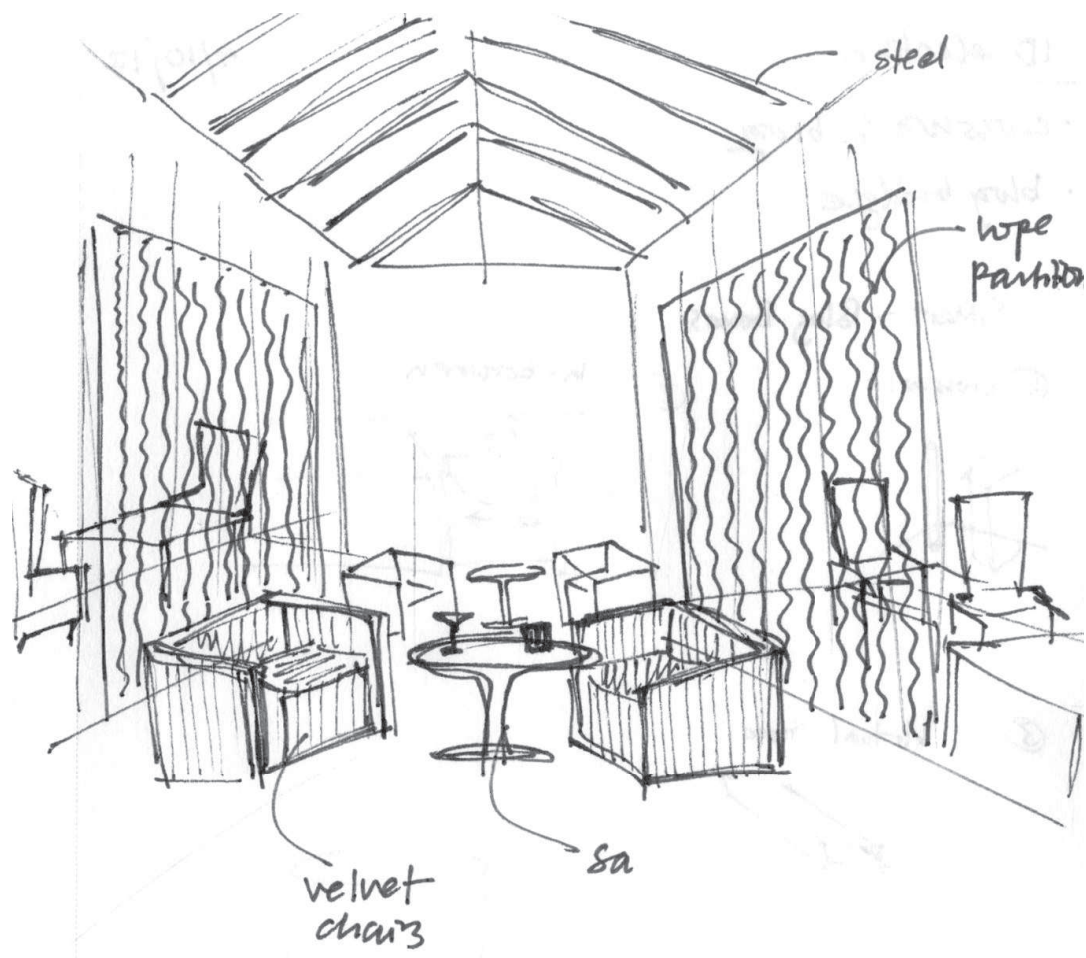
ABSTRACT

Higher arts education is an enormous luxury. If part of the appeal and exclusivity of higher education is grounded in the extravagance of attending private, reputable schools like Rhode Island School of Design, is there a way to extend this exclusive “club” to alumni and visiting artists and designers?

When we join a club, we become part of an organization that is exclusive to people with similar interests. Education is a club; the privilege to be accepted to an exclusive group of people with similar interests allows for access to professional insight, resources, and knowledge. RISD provides privilege where ability of the hand and luxury of thought are cultivated in addition to the opportunity to form relationships with alumni, artists and designers from around the world.

This relationship between RISD students, alumni, and visiting artists and designers will be made explicit through an open atrium and rooftop, housing an exclusive club in the 1942 RISD auditorium fly tower and existing 5th floor. The RISD Club will function as a hybrid of an existing university destination at Harvard Club and artist societies such as Soho House and Pioneer Works. A space providing connection and exclusive access to the RISD community of alumni, students, and faculty will not only strengthen this artist network but help to spur endowment growth as students graduate and remain affiliated with RISD throughout their careers.

The newly defined North Main Street entrance of the RISD auditorium opens into the old fly tower of the theatre. The atrium filling this space facilitates serendipitous encounters between students, alumni and visiting artists and designers as they wait for the glass elevator to travel to private, student studio spaces, the rooftop restaurant and bar, or a hotel room cantilevered over the RISD landscape. While traveling through layers of studio space in the elevator, the privileged view of current RISD student production provides a visceral experience for the audience of alumni, artists, and designers. These architectural interventions and program acknowledge and celebrate the existing privilege and resources afforded by Rhode Island School of Design and opens doors for contemporary and future artists and designers.



ARTIST SOCIETIES & UNIVERSITY CLUBS

Current Artist and Alumni Clubs

PIONEER WORKS

Dustin Yellin, Brooklyn, NY

David Yellin's Pioneer Works studio in Brooklyn NYC acts as an inclusive haven for creativity, rest, and plenty of collaboration. The old, industrial space boasts open studio space across multiple creative disciplines, something I am interested in achieving in my intervention. As a space dedicated to connecting with artists young and old, Pioneer Works acts as a programmatic precedent as well as a theoretical approach to more transparent studio work spaces and those who desire to be affiliated.

1.



2.



1. Pioneer Works' industrial studio space in Brooklyn, NY, 2. Dustin Yellin amongst fellow artists, 3. Musical resident at Pioneer Works, Eli Keszler, 4. Pioneer Works offers classes during the winter and spring, 5. Exhibition with view of 1st and 2nd levels of Pioneer Works



3.

EDUCATION
**Winter/Spring
Classes 2017**

4.



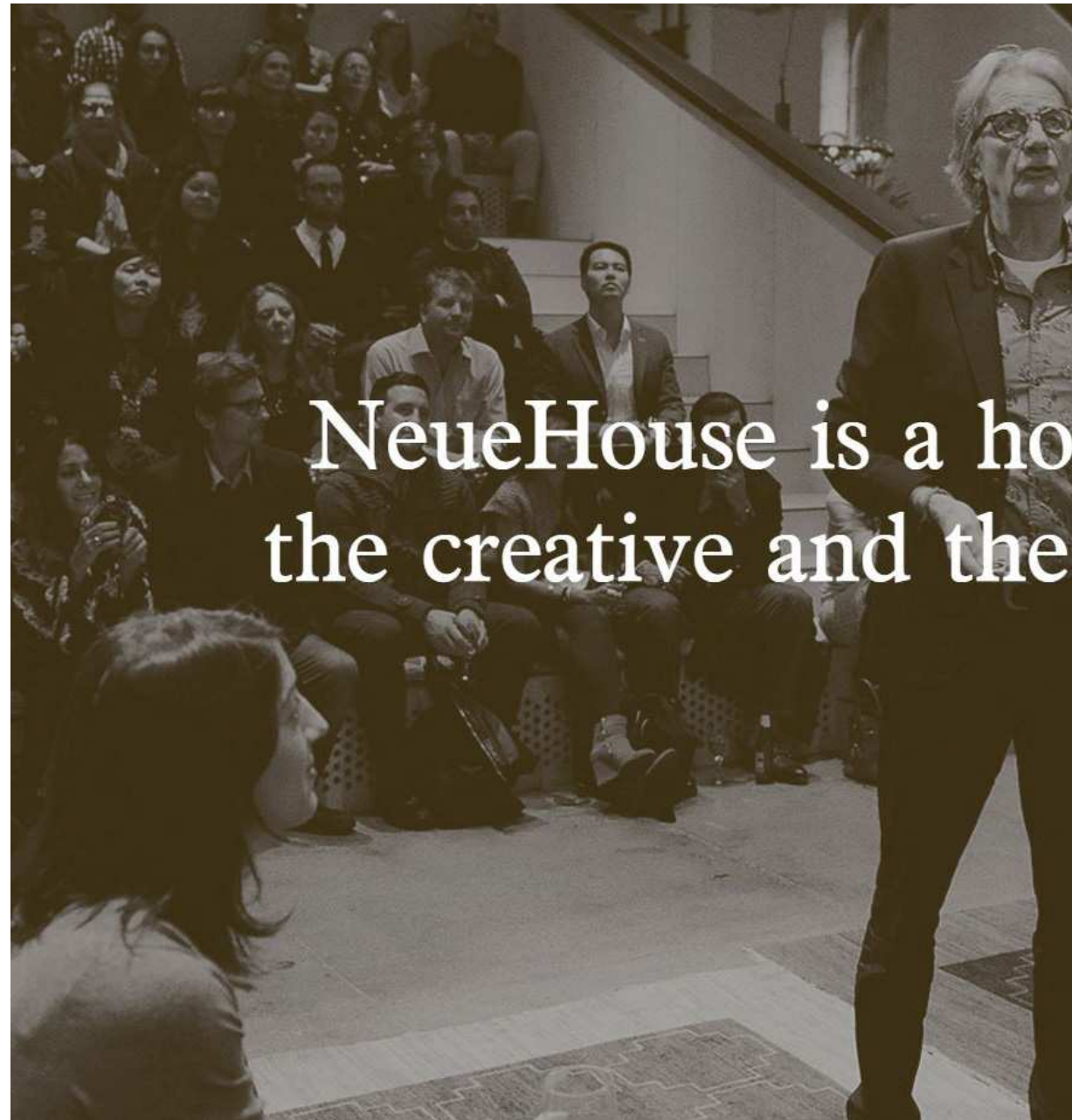
5.

NEUEHOUSE

Madison Square & Hollywood

As a private members' only club, NeueHouse in New York City provides an exclusive experience where work and play run together. The laidback, hotel-esk experience provides members with different tiers of service, from access to communal floors during the weekdays or private access to rented atelier or studio space. As creatives, it is important to play as hard as you work, and when you are combining a group of all levels of professional creatives you get a curious think tank.

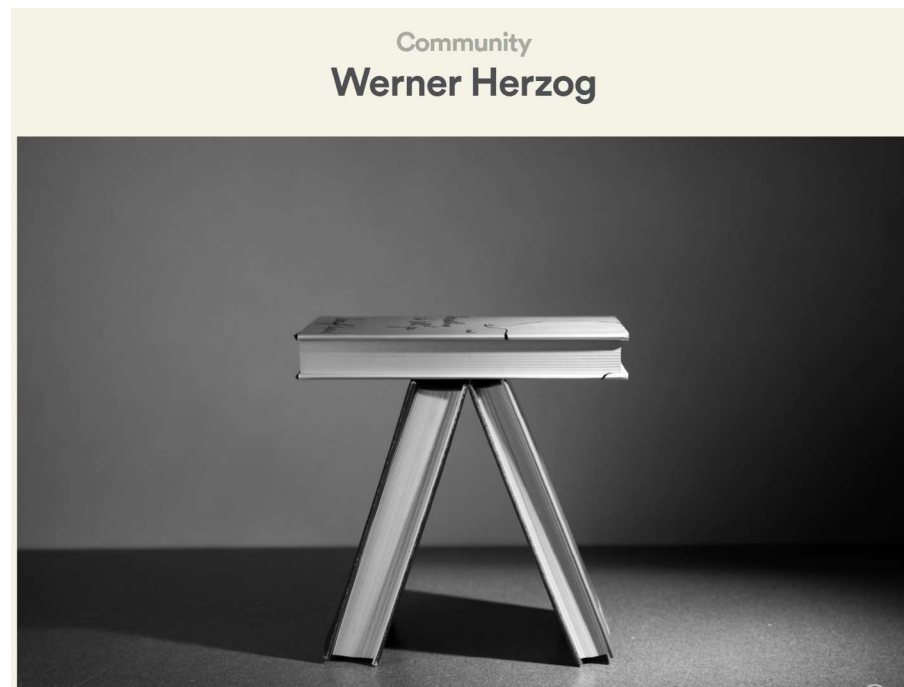
2.



1.



1. NeueHouse at Madison Square, 2. A group of members gathers for a lecture, 3. Relaxation space at NeueHouse Hollywood, 4. Community member, Werner Herzog, says "An idea is something organized and based in more systematic thinking. A fantasy is something that just occurs. And it's just almost always anarchic."



SOHO HOUSE

United Kingdom, North America, Worldwide

Soho House goes the extra mile by providing members with access to on-site accommodations, dining, and entertainment in addition to workspace. The Soho House brand reaches across the world, providing artists and designers space to call home whether they are in Barcelona, Spain or Montreal, Canada. The accommodation and dining/entertainment spaces have inspired my thesis program to include everything from work to rest to play.

1.



2.



1. Cowshed Spa at Soho House Barcelona, 2. Sitting room in Soho House West Hollywood, 3. Rooftop pool overlooking downtown Barcelona, 4. High Road House Bar in West London, 5. The bar at Electric House in London



3.



4.



5.

HARVARD CLUB CAMBRIDGE, MA

The Harvard Club has been providing membership to alumni since 1908, acting as a hub for new and old alumni to network and build connections based solely on the attendance of such a reputable school. The privilege of attending a school like Harvard provides theoretical basis for my thesis. This becomes a catalyst for the future of Rhode Island School of Design and the alumni-student relationship.

1.



2.



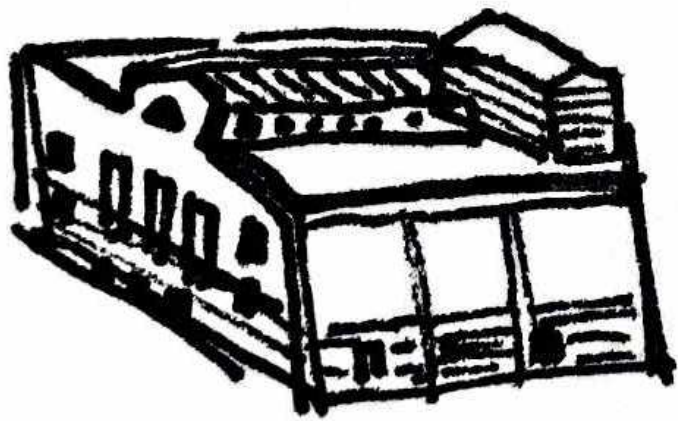
1. The Harvard Club official seal, 2. A wedding reception in a main hall at the club, 3. Alumni sporting event, 4. The Back Bay Clubhouse at the Harvard Club



3.



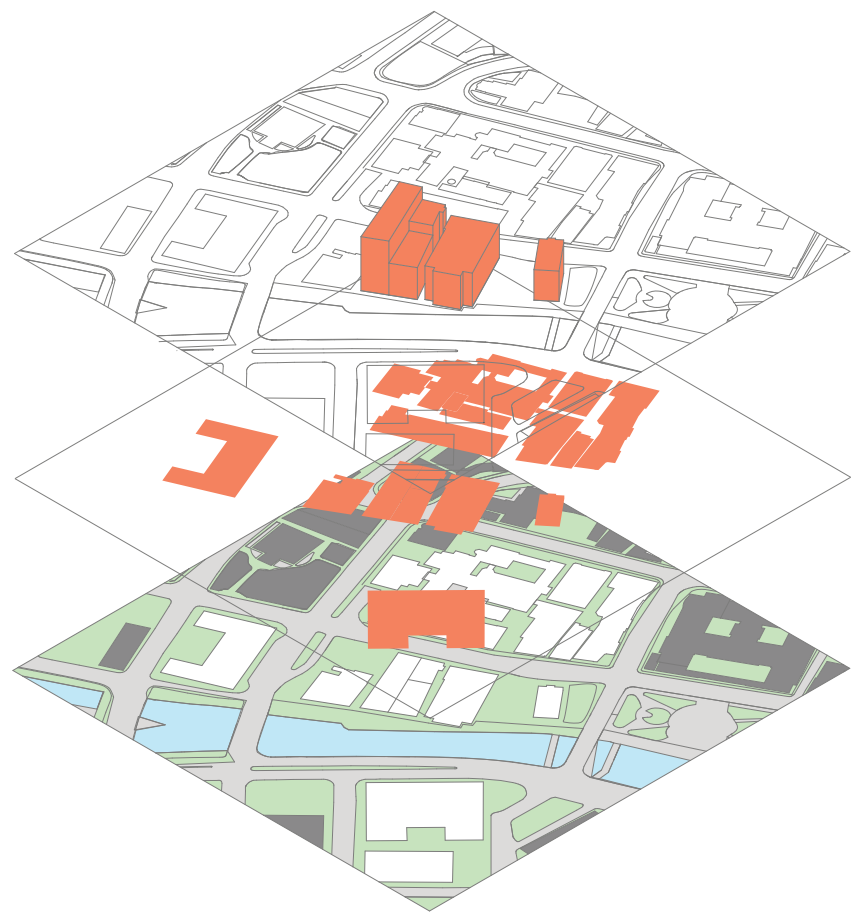
4.



CENTRALITY ON CAMPUS

The RISD Auditorium is positioned along the Providence Canal Walk, a central point on campus. Surrounded by the RISD Design Center, RISD Store and 3D Store, the RISD Museum, and RISD Metcalf Building, and within walking distance to many other RISD buildings, the auditorium provides a perfect backdrop for a new program in which the main objective is to create a new connection between current students, alumni, and visiting designers and artists.





Access to many campus buildings allows the RISD community to be extended in the form of membership to a club that caters to current students and faculty, alumni, and affiliated artists and designers. The RISD auditorium intervention provides this community with a privilege that is associated with past and present education.

PROXIMITY TO RISD MUSEUM

The 2008 addition of the RISD Museum Chace Center opens up space for current student exhibitions as well as alumni and affiliate artist and designer works. The Museum houses a permanent collection of modernist furniture and impressionist paintings, while a sky bridge connects the new, modern wing to the older sections of the museum. Adjacency to the RISD Auditorium allows for a new found connection between the current student program and the alumni, as the new hotel accommodation and rooftop bar and restaurant houses works by students and alumni.



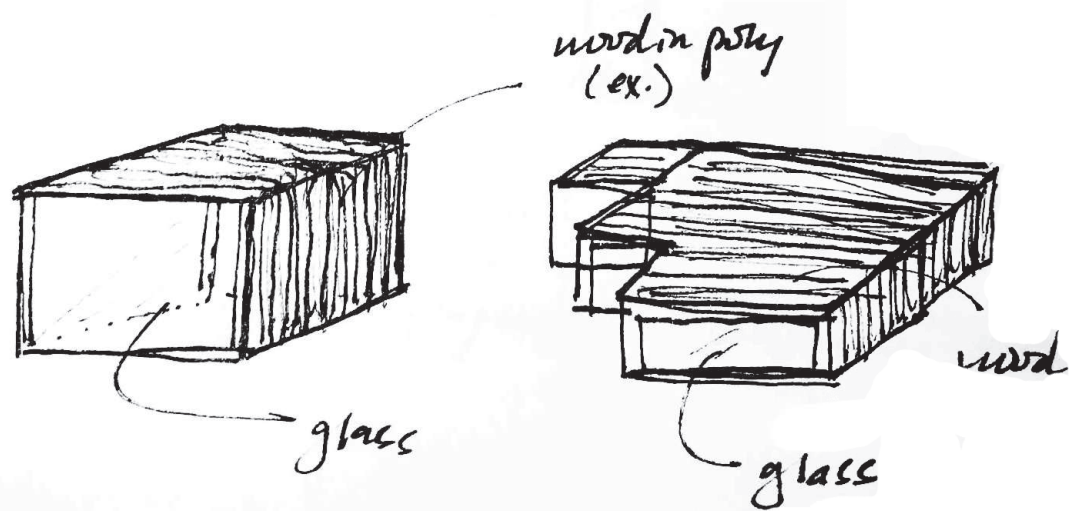


2.



A 2014 honorary doctorate degree recipient, Todd Oldham, exhibits his work "All of Everything", celebrating the craftsmanship and exuberance of fashion in the 1990's. The show included pieces from Oldham's own collection (1) as well as archived pieces already at the RISD museum. Part of the contemporary collection, paintings such as *Still Life with Lemons* by Henri Matisse, an armchair by Alvar Aalto, and *Flowers* by Fernand Léger (2), provide physical proof of the level of connection between the current student body, alumni, and artist and designer community that has formed at RISD.





EXISTING ARCHITECTURE

Current Program

THEATRE

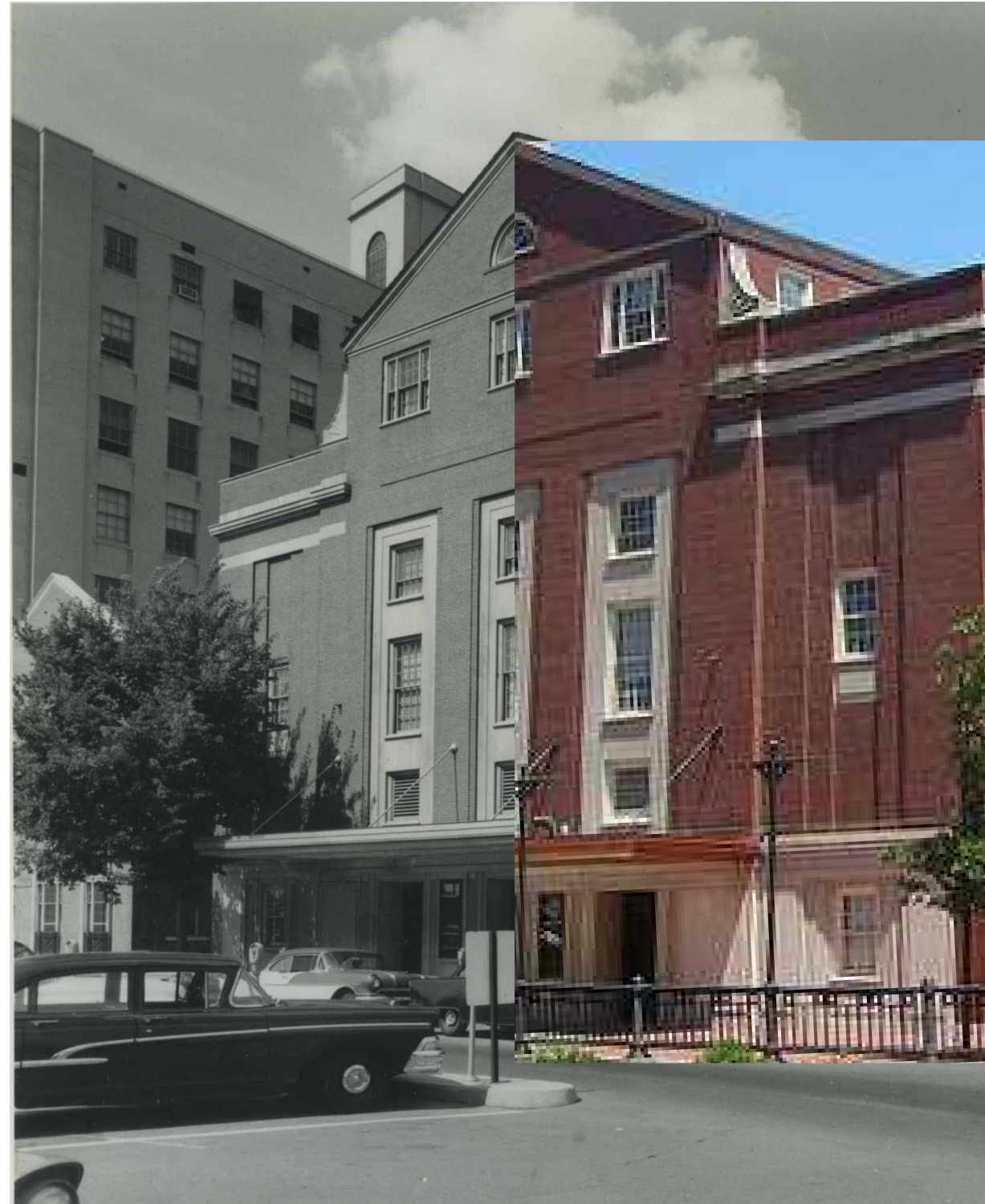
1940's to Present

When the project started for the RISD Auditorium in the early 1940's, Paul D. Creer designed the space to house a four-story tall auditorium, with a stage that extended back 50 feet. Set design and theatre apparel design classes topped the 6-story tall volume. In the 1980's RISD introduced the film, animation, video (FAV) studio program to the building, erecting a five-story wall right behind the original theatre proscenium, allowing for new studio space with screening and editing rooms to be forged. What was left was a building that acted as both space for visiting artist lectures and space for FAV students to work on their latest stopmotion video project until early hours of the morning. The two programs seemed to function completely independent of each other, allowing a chance to bring new life to the building as well as those who would be visiting or working within its walls.

1.



2.



1. Annie Mok, Artist-Illustrator, discusses trauma, gender, and magic at the RISD Auditorium,
2. 1942 photograph of auditorium exterior, 3. 2016 photo of auditorium exterior, 4. Virgil Abloh speaks with President Somerson on the topic of contemporary design across multiple disciplines,
5. Presentation for new RISD acceptances, 6. Sebastian Errazuriz, designer and activist, lecture.



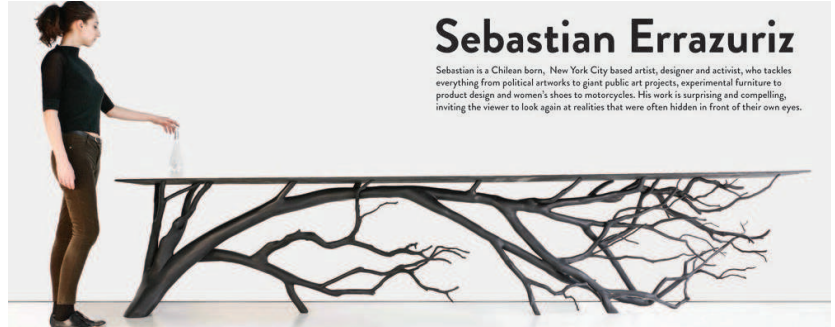
3.

VIRGIL ABLOH

4.



5.



6.

FILM, ANIMATION, VIDEO *Current Program*

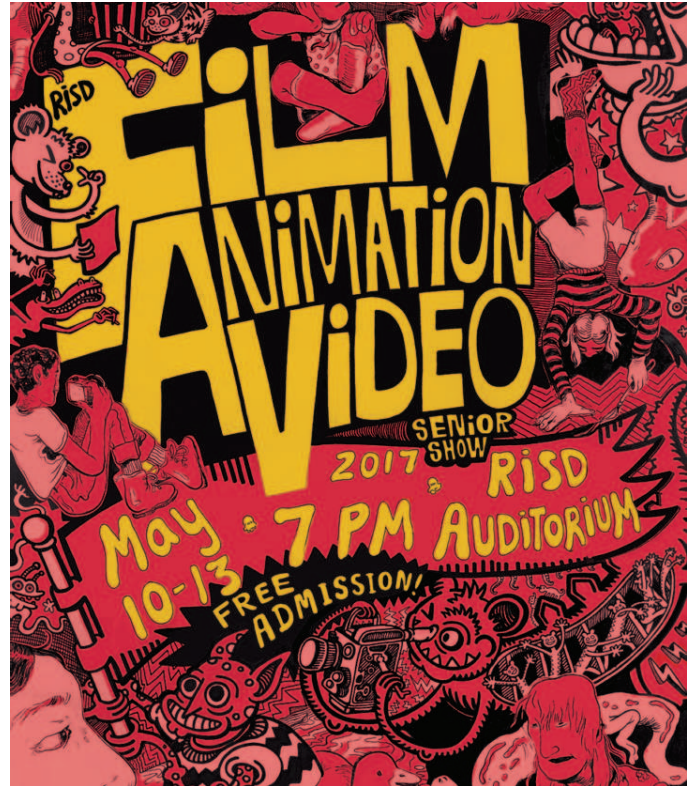
2

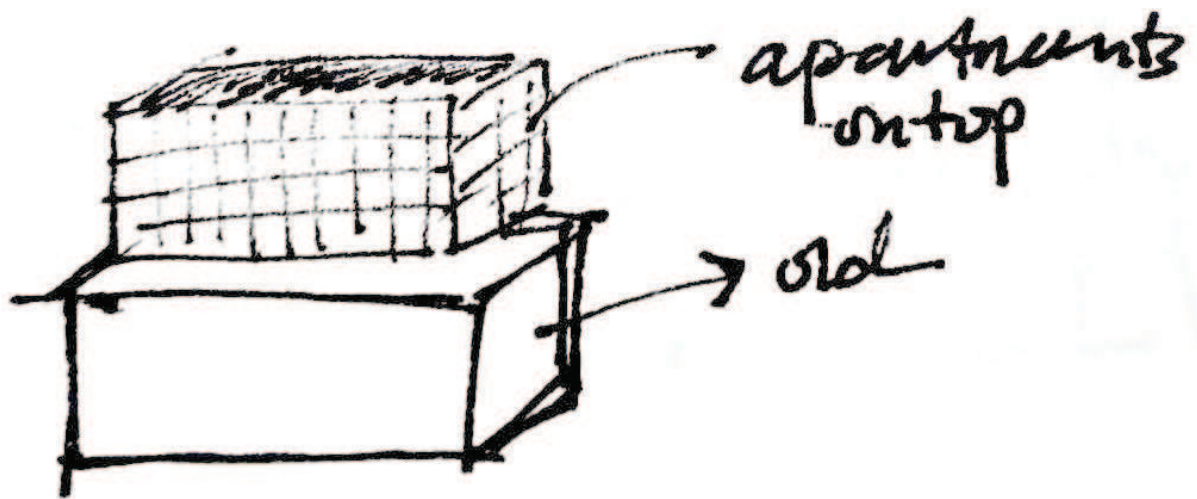
Today, the FAV department houses classes such as Digital Animation, Sound for the Screen, Cinema Production, Experimental Film, and Live Action. In the true spirit of the theatre, students spend time in double-height screening spaces with green-screen technology that brings their film shorts to life. In the lifespan of this building, theatrical productions transitioned to film, and as a result, became much more exclusive and closed to the rest of the student body, faculty, alumni, and visiting artists and designers. The large, 1980's section of the auditorium is now home to new technologies for filmmaking, including spaces dedicated to digital animation with programs such as Autodesk Maya and Adobe Production Software as well as older machines such as the Steenbeck editing labs. The spaces on the first through sixth floors currently occupy FAV, foundations, and fine arts studios.

1.



1. Pastel doodle by Ana Kim, BFA 2013, 2. FAV majors learning about new filming techniques 3. The 2017 Film Animation Video Senior Show poster, 4. A collection of photographs help to inspire a new project 5. Film by Andreas Nicholas, BFA 2013



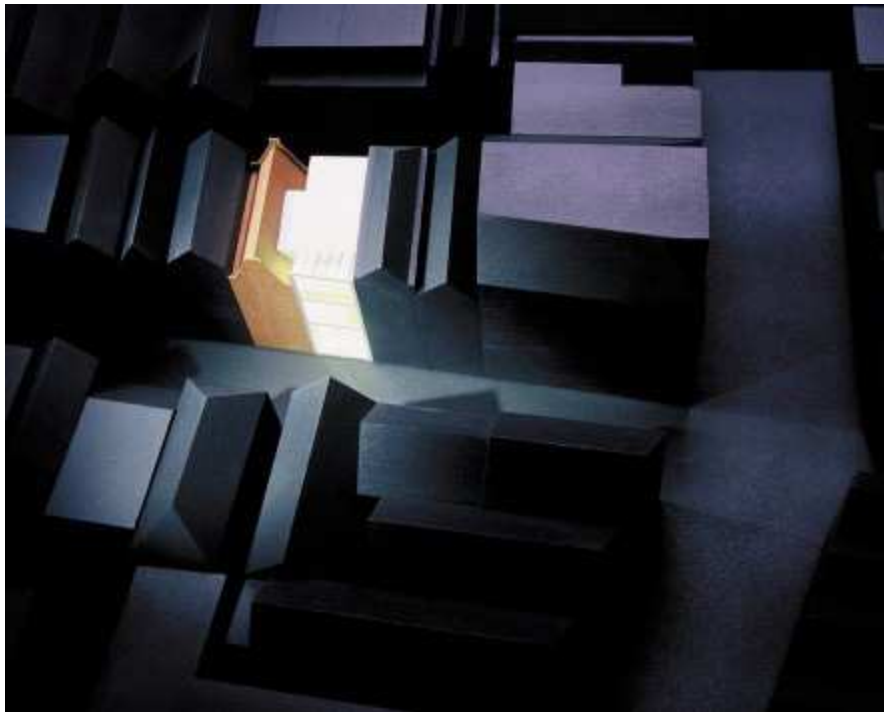


HARRLEMMERBUURT

KAAN, Amsterdam

There is no better example to illustrate the contrast between old and new architecture than the Harlemmerbuurt housing project. Described as the "intravenous drip", the glass insertion architecture stands between the untouched, scandinavian buildings. The two are so completely different that each stand on their own without taking away from the remaining urban block. The seam between the old and new is respected.

1.



2



3.

1. Site model of old and new architecture, 2. Urban fabric of old houses in Amsterdam with the new, glass intervention, 3. Glass connection between Haarlemmerbuurt buildings, 4. Sketch by KAAAN Architecten of exterior elevation, 5. Close-up detail of brick and glass



4.



5.

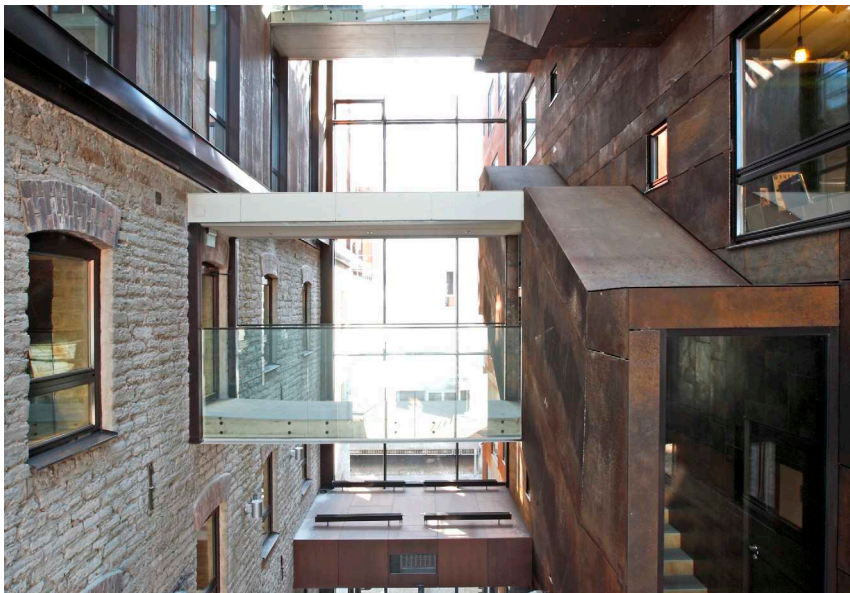
ROTTERMAN FLOUR

HGA, Tallin, Estonia

2

Old and new is explicitly highlighted in the existing limestone walls and with brick lintels and rusted steel details and the burnt orange, corten steel tops. This difference of materials has given the visitor a visual journey through the past, propelling them into the present with clever glass ties between buildings. The materiality between old and new in this project has highlighted a particular feel between rough stone and the rigid and sleek look of the steel that has helped to inform the look and feel of my RISD auditorium intervention.

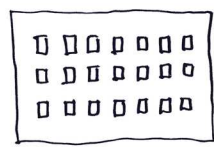
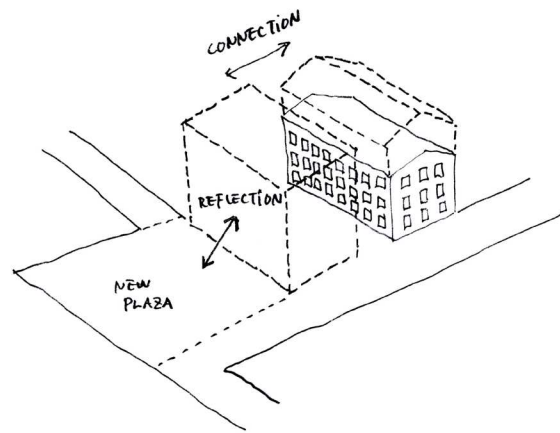
1.



1. The interior connection between old and new flour storage buildings, 2. The position of the architecture within the city of Tallin, 3. HGA parti diagrams showing the connection between old and new and the materiality, 4. Interior steel staircase with glass boxes, 5. The exterior corten steel against the background of the sky

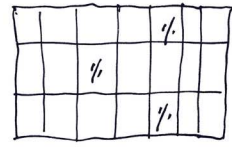


3.

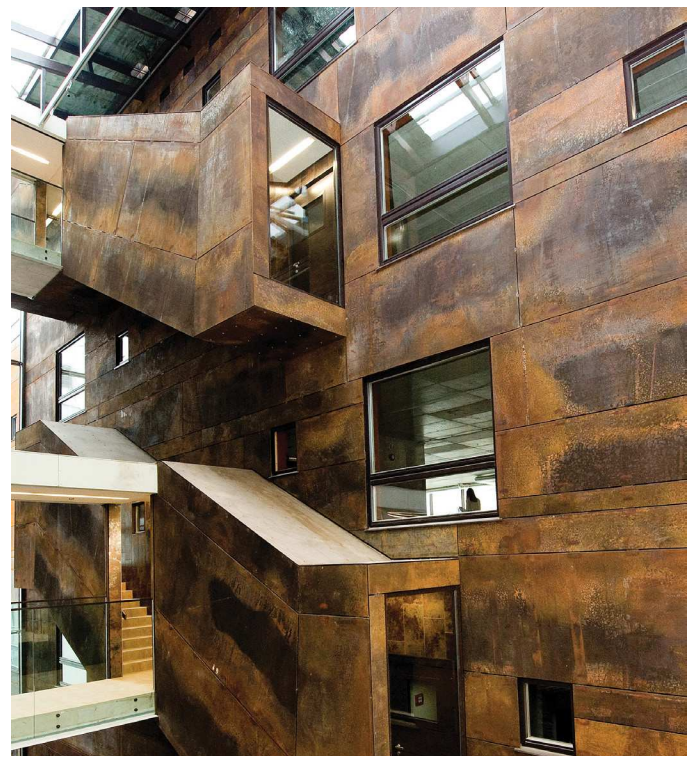


HISTORICAL BLDG
MASSIV WALL + PUNCHED
WINDOWS

>



MODERN BLDG
GLASS WALL = WINDOW



4.



5.

FINE ARTS MUSEUM OF ASTURIAS

Francisco Mangado, Asturias, Spain

The hero of the Museum of Asturias in Spain is the modern, glass insertion into the shell of the existing, historic facade. The inner block courtyard created in the center of the museum acts a place of connection and encounters between patrons and architecture. This reveal has directly influenced my intervention, utilizing an atrium as a core of activity where spontaneous interactions are facilitated by students, faculty, alumni, and visiting artists and designers. The core also acts as a bridge between existing and new program, such as FAV screening space, the restaurant kitchen, and accommodation spaces.

1.



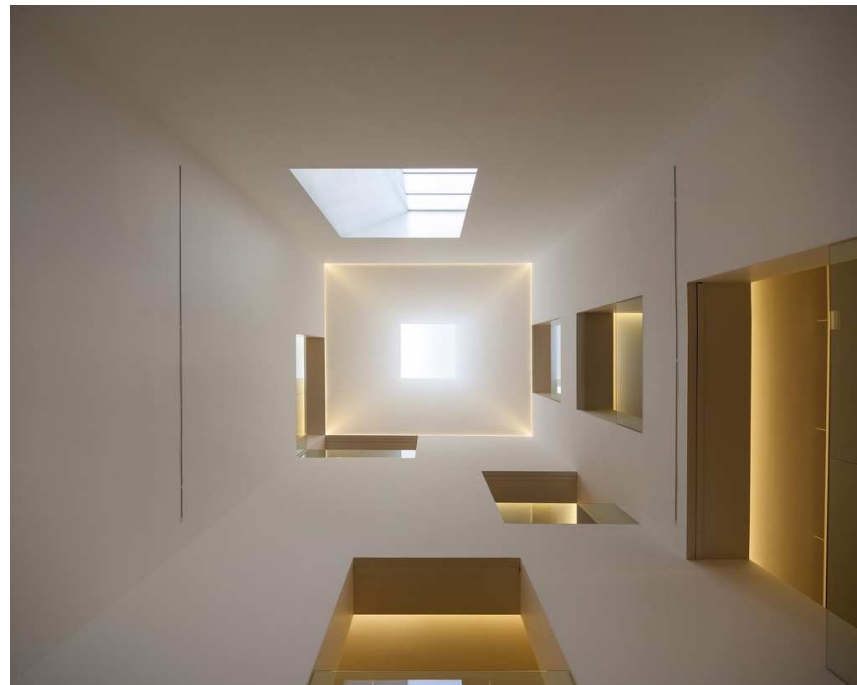
2.



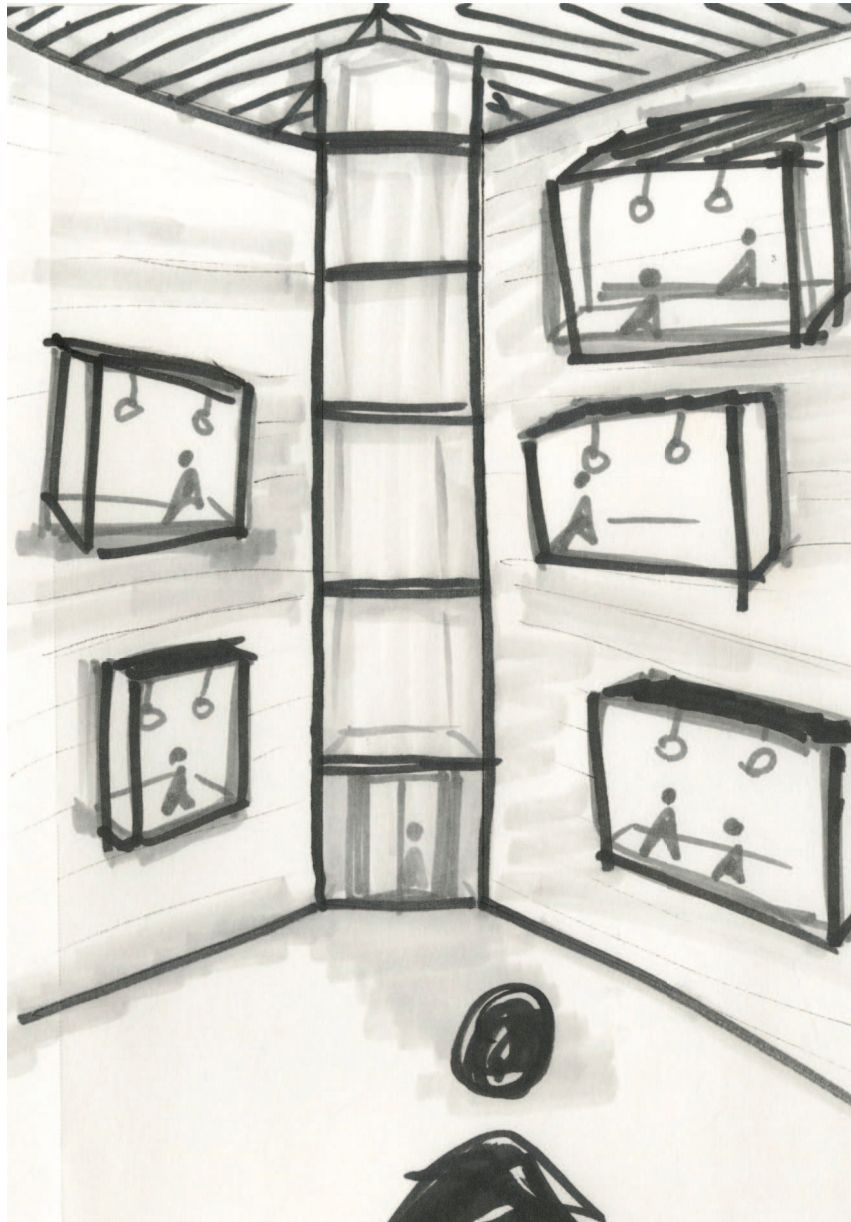
1. Layers of existing shell and new glass, envelope, 2. The relationship of the museum with the surrounding urban street, 3. View into the museum atrium from interior apertures, 4. Insertion of glass inside stone exterior, 5. View up to the atrium/light-well



4.



5.



CANADIAN MUSEUM OF NATURE 2. *KPMB, Ottawa, Ontario*

The most recognizable detail of the Canadian Museum of Nature (CMN) is the glass lantern that stands on top of the Beaux-Arts architecture. This intervention resolves the original circulation problems while opening a continuous loop around the four levels of the museum. The position of this atrium allows for multiple uses of gallery spaces, from traditional black box spaces to day-lit galleries. Just as the intended format of my auditorium intervention creates open space for spontaneous interaction between the current studio program and newly implemented designs, the CMN provides a newly defined space that changes the nature of the once closed-off gallery spaces.

1.



1. Detail photograph of the interior of the new glass addition, 2. The position of the museum in the city of Ottawa,,3. New atrium and circulation stair, 4. Detail of material difference in exterior, 5. Interior perspective from glass "lamp"



3.



4.



5.

FAHLE HOUSE

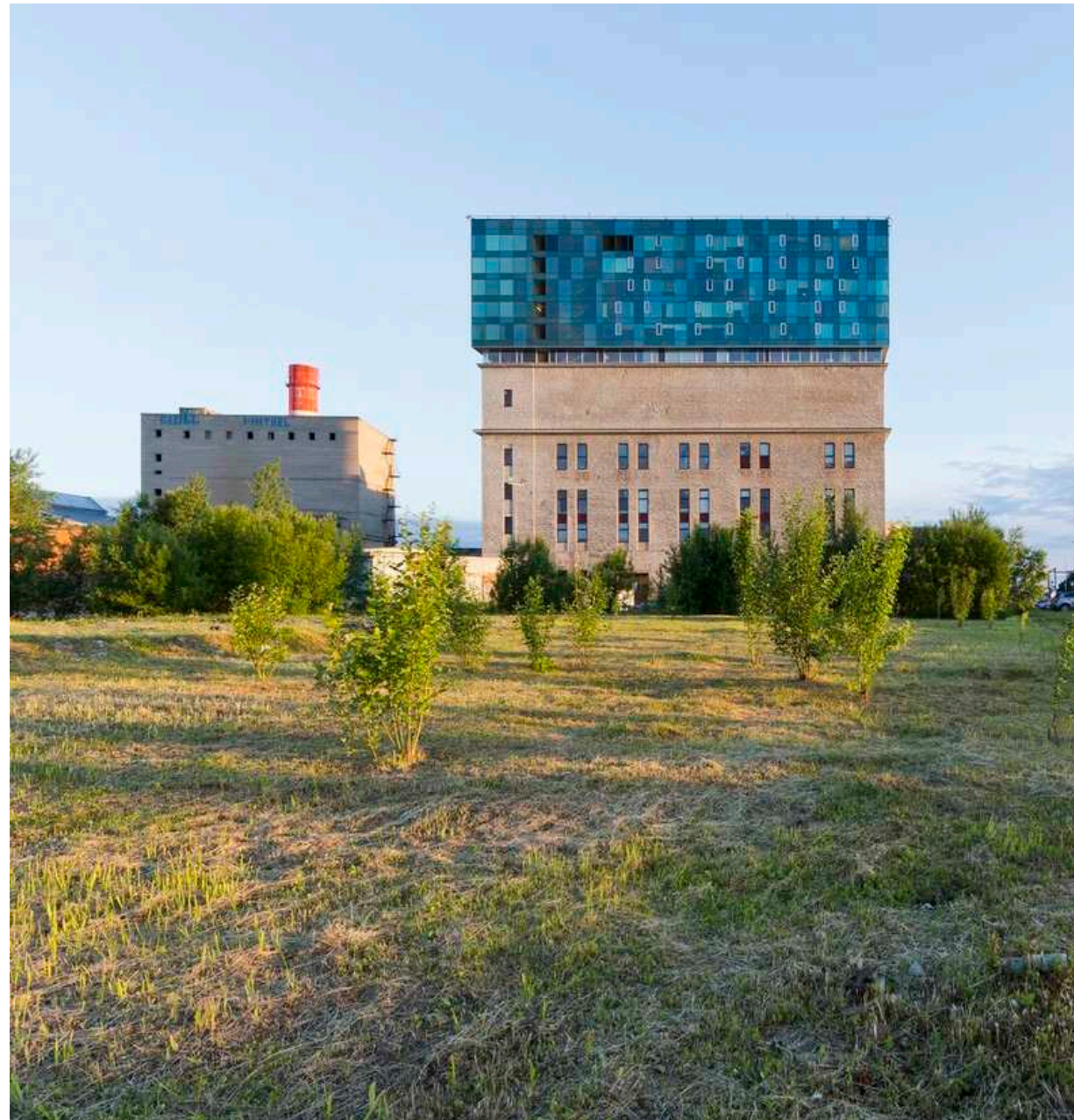
KoKo Architects, Tallin, Estonia

The very being of the Fahle House rests on the primary function of a glass housing program placed on top of the limestone walls of an old boiler house. The position of housing allows for uninterrupted views of Tallin, providing an ideal environment for living that teases design-sensible people living in the city to buy into the dream of living in the clouds. The idea of "living in the clouds" was directly implemented in the design of my eight accommodation spaces. I wanted the spaces to be efficient in design, as each visiting artist, designer, or alumni floats above the energetic rooftop restaurant, bar, and center of campus.

1.



2.



1. Fahle House is positioned at the beginning of the town of Tallin, 2. Depiction of the placement of Fahle House within in the natural landscape,3. The new urban fabric created by old industrial architecture and the new, glass Fahle House



3.

THE WYTHER HOTEL

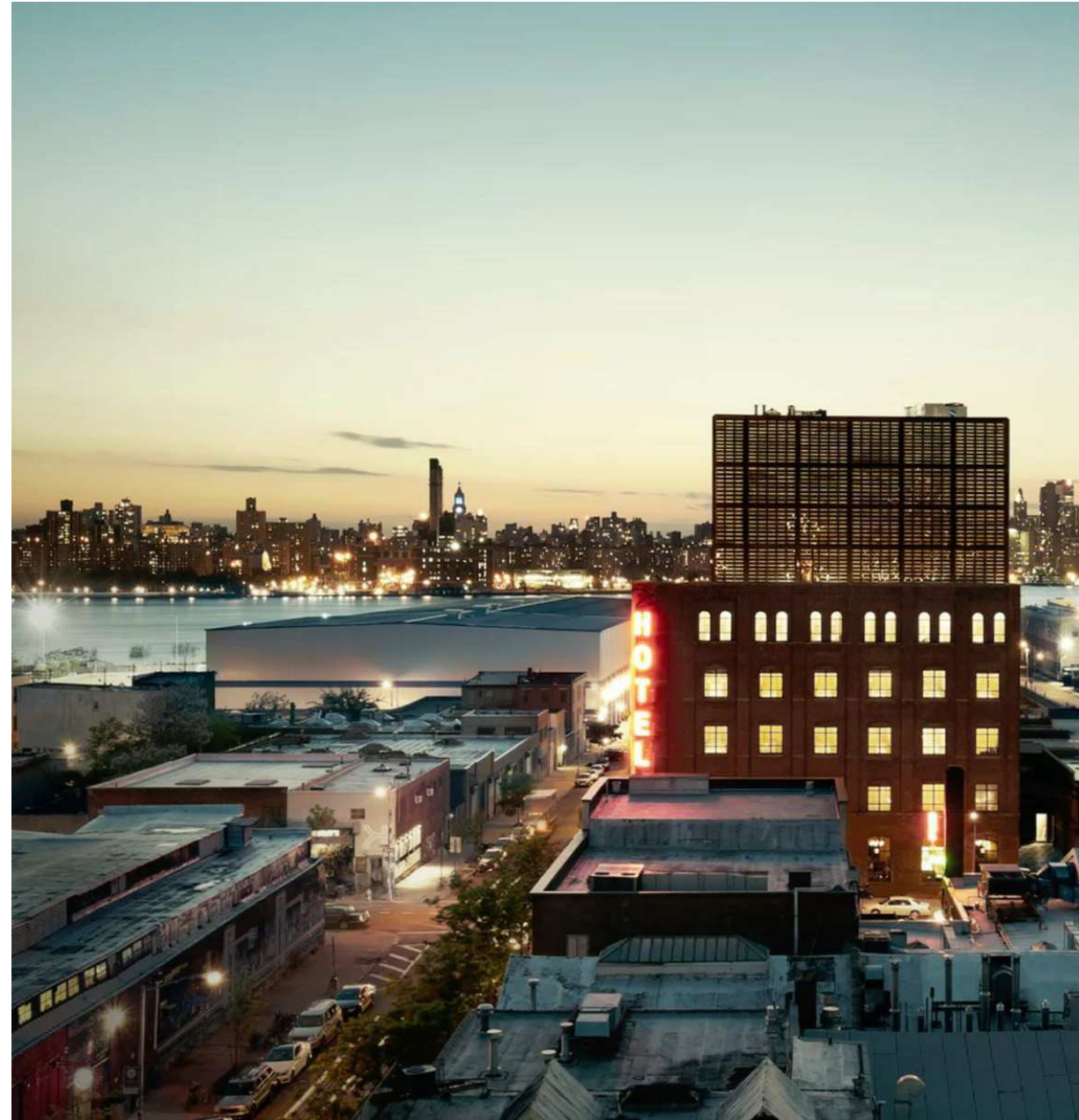
Morris ADJMI Architects, Brooklyn, NY

The star of the Wythe Hotel is the new, steel and glass four-story volume inserted into the middle of the existing brick, industrial architecture. Not only does this new addition create an open-air feel on the interior, the modern look of the steel and glass grid gives those passing the hotel a view into one of the hottest new hotels in Williamsburg, Brooklyn. The newly defined tower commands attention across the skyline, a design factor that aids the purpose of adding on top of the existing fly space in the RISD Auditorium.

1.



2.



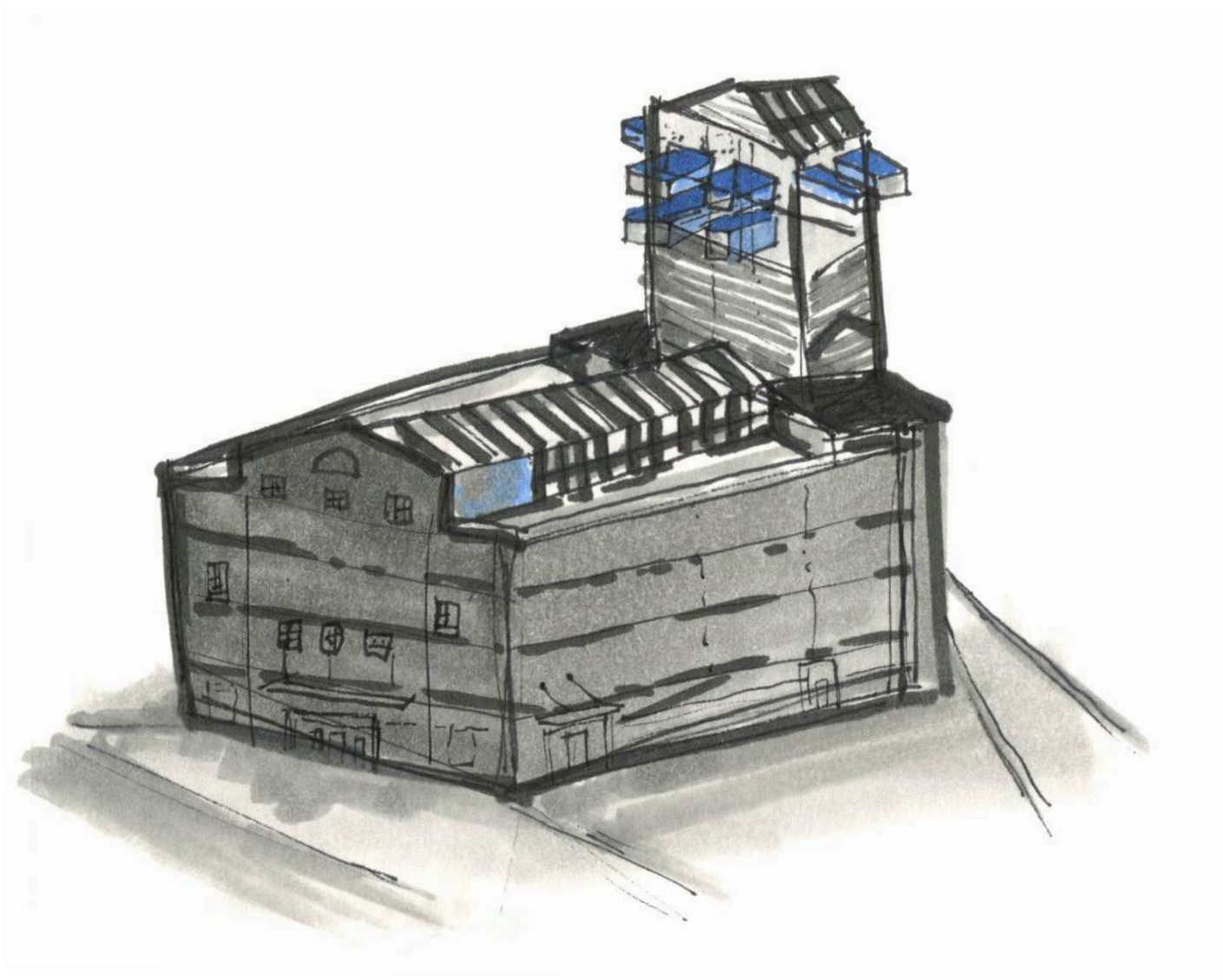
1. Rooftop view of Brooklyn, 2. Night view of the Wythe Hotel against the Brooklyn backdrop, 3. Guest room at the Wythe Hotel, 4. Interior view of the lobby of the Wythe Hotel



3.

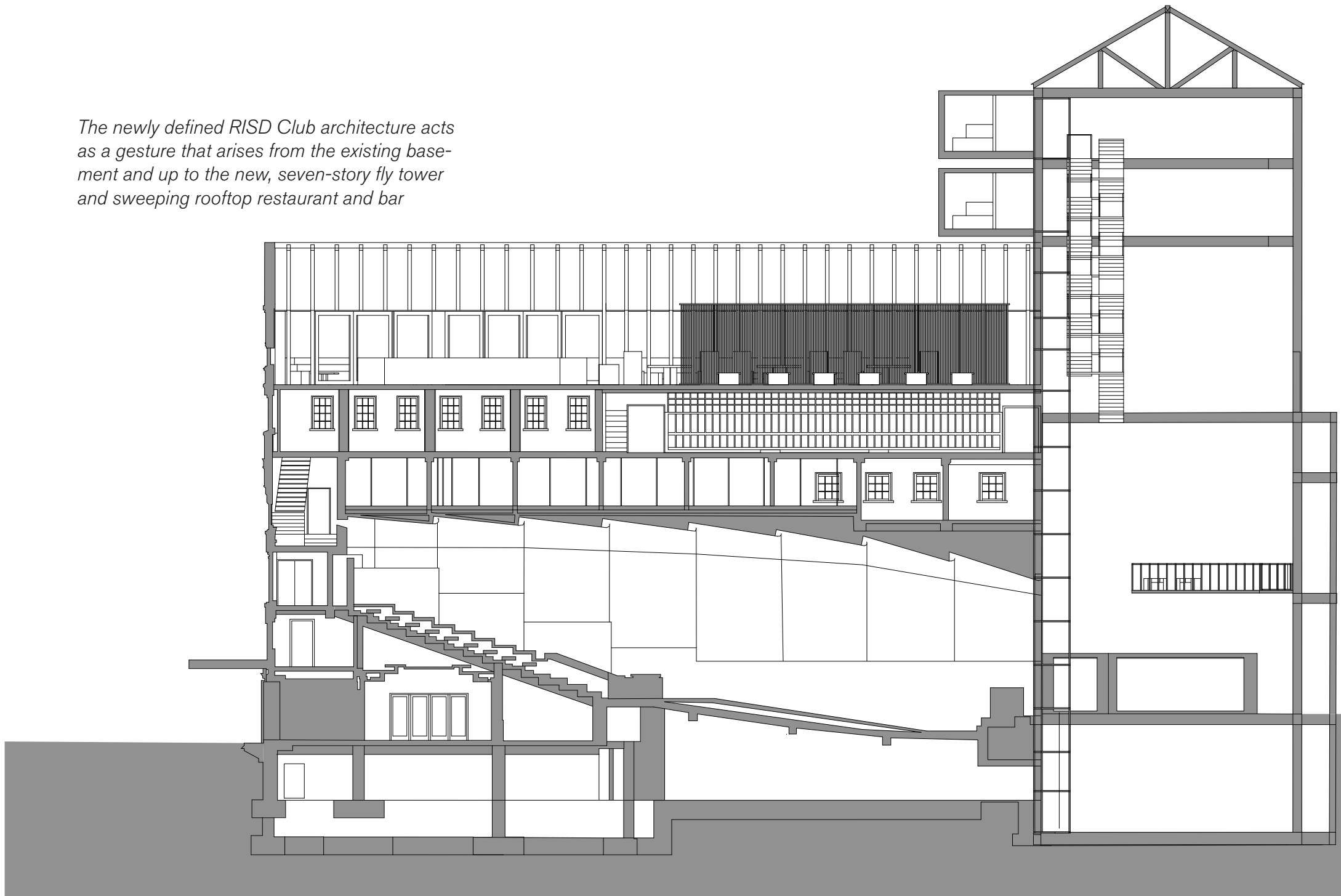


4.

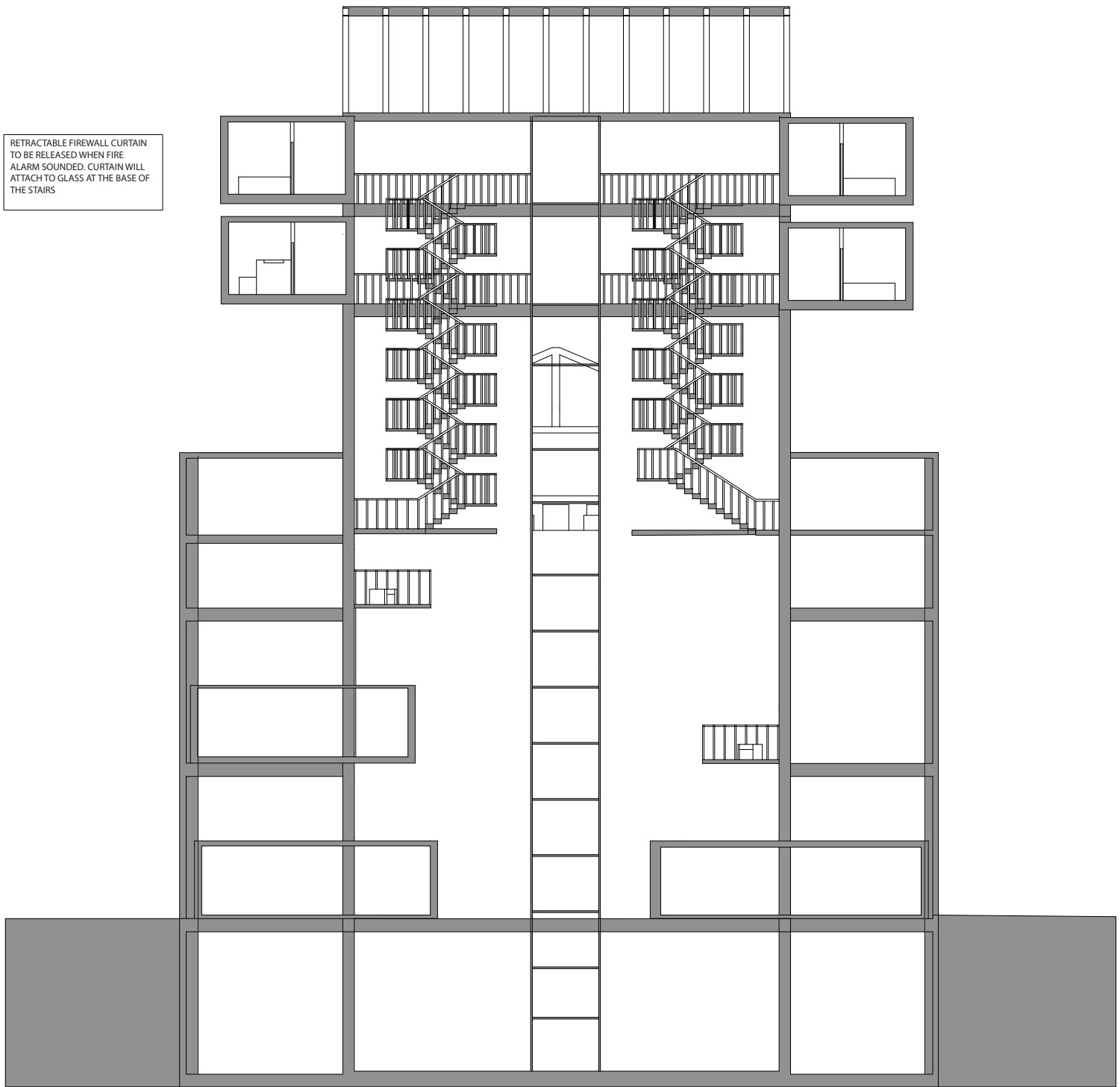


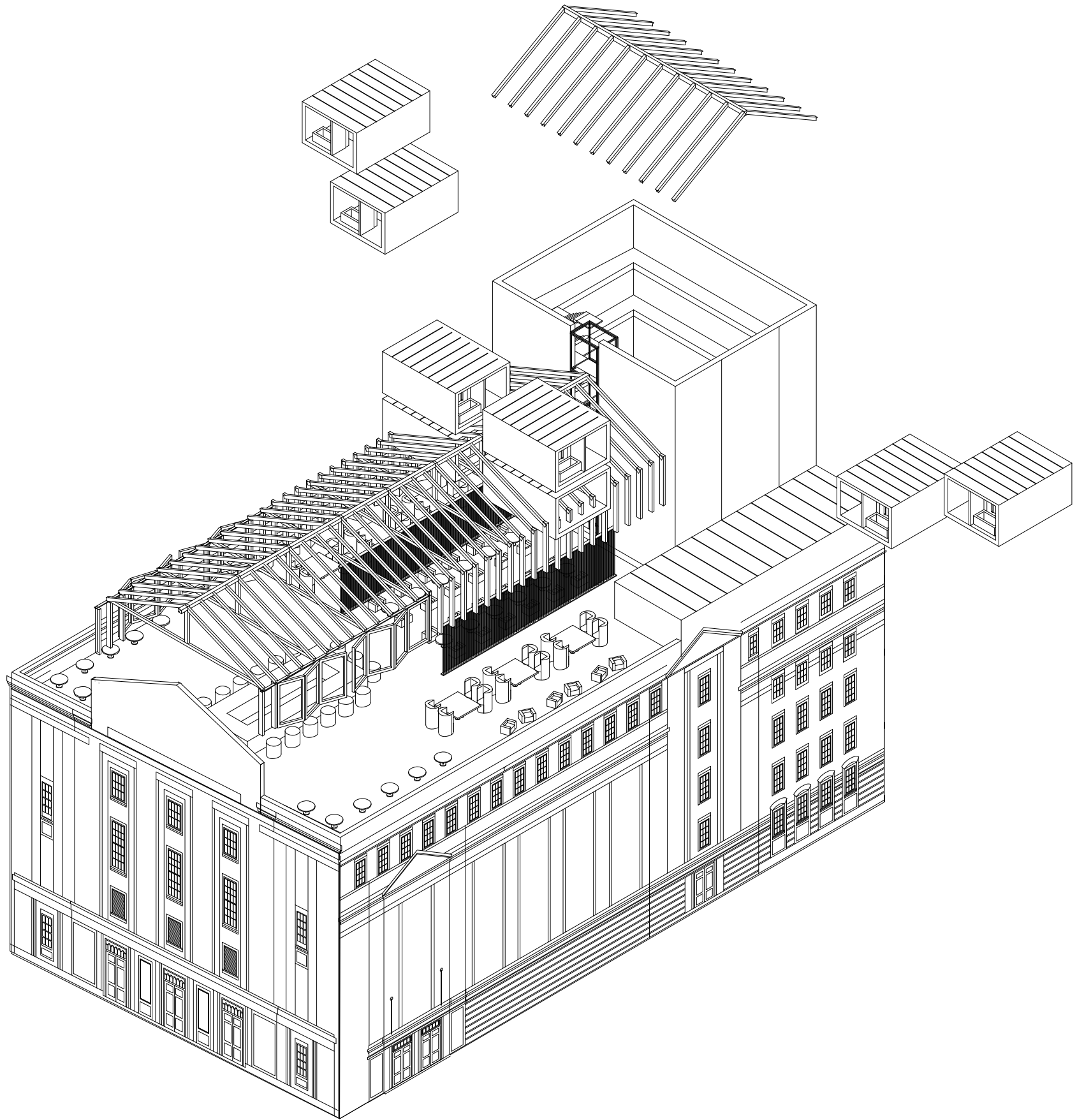
RISD CLUB

The newly defined RISD Club architecture acts as a gesture that arises from the existing basement and up to the new, seven-story fly tower and sweeping rooftop restaurant and bar



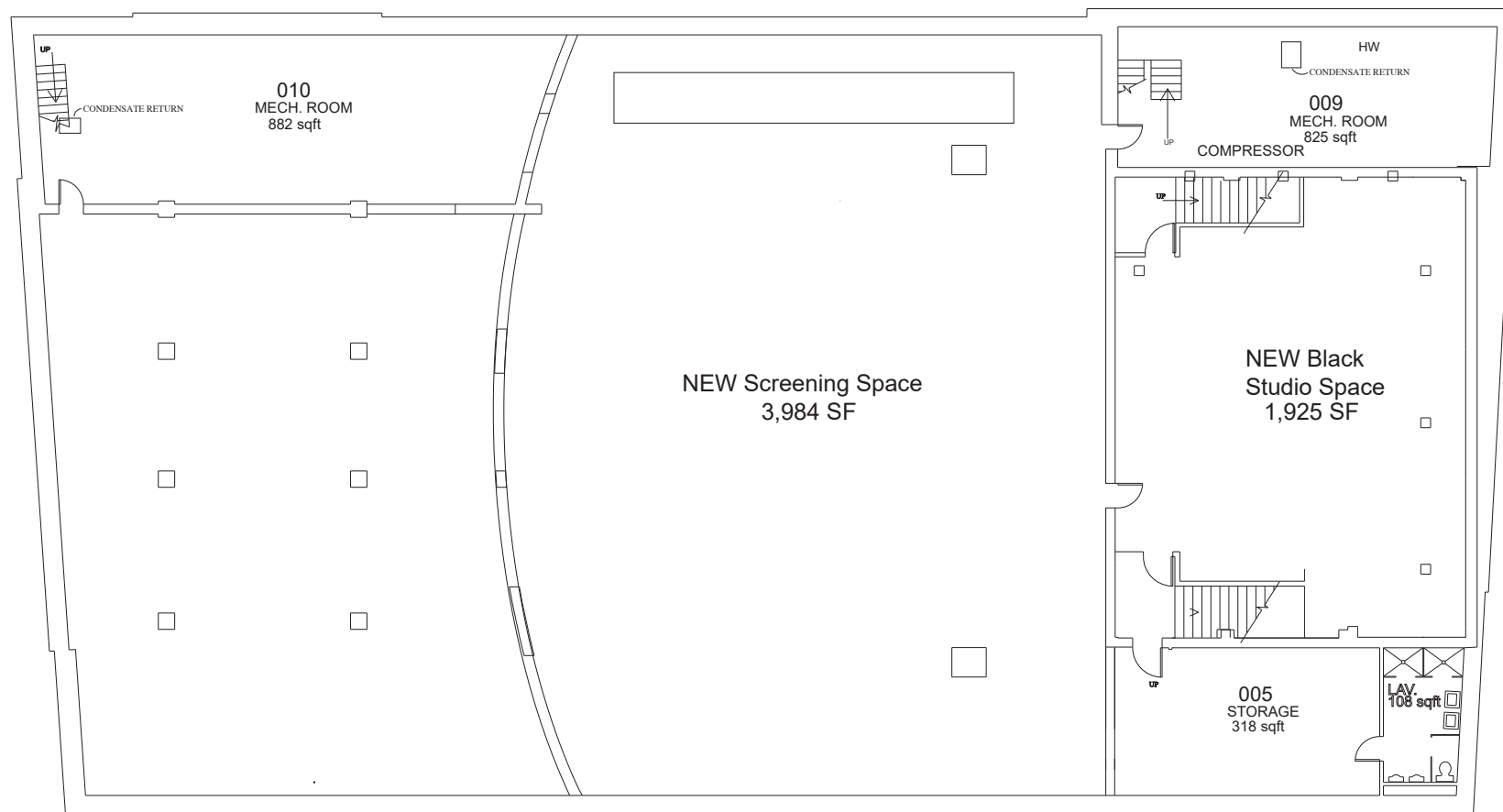
RETRACTABLE FIREWALL CURTAIN
TO BE RELEASED WHEN FIRE
ALARM SOUNDED. CURTAIN WILL
ATTACH TO GLASS AT THE BASE OF
THE STAIRS





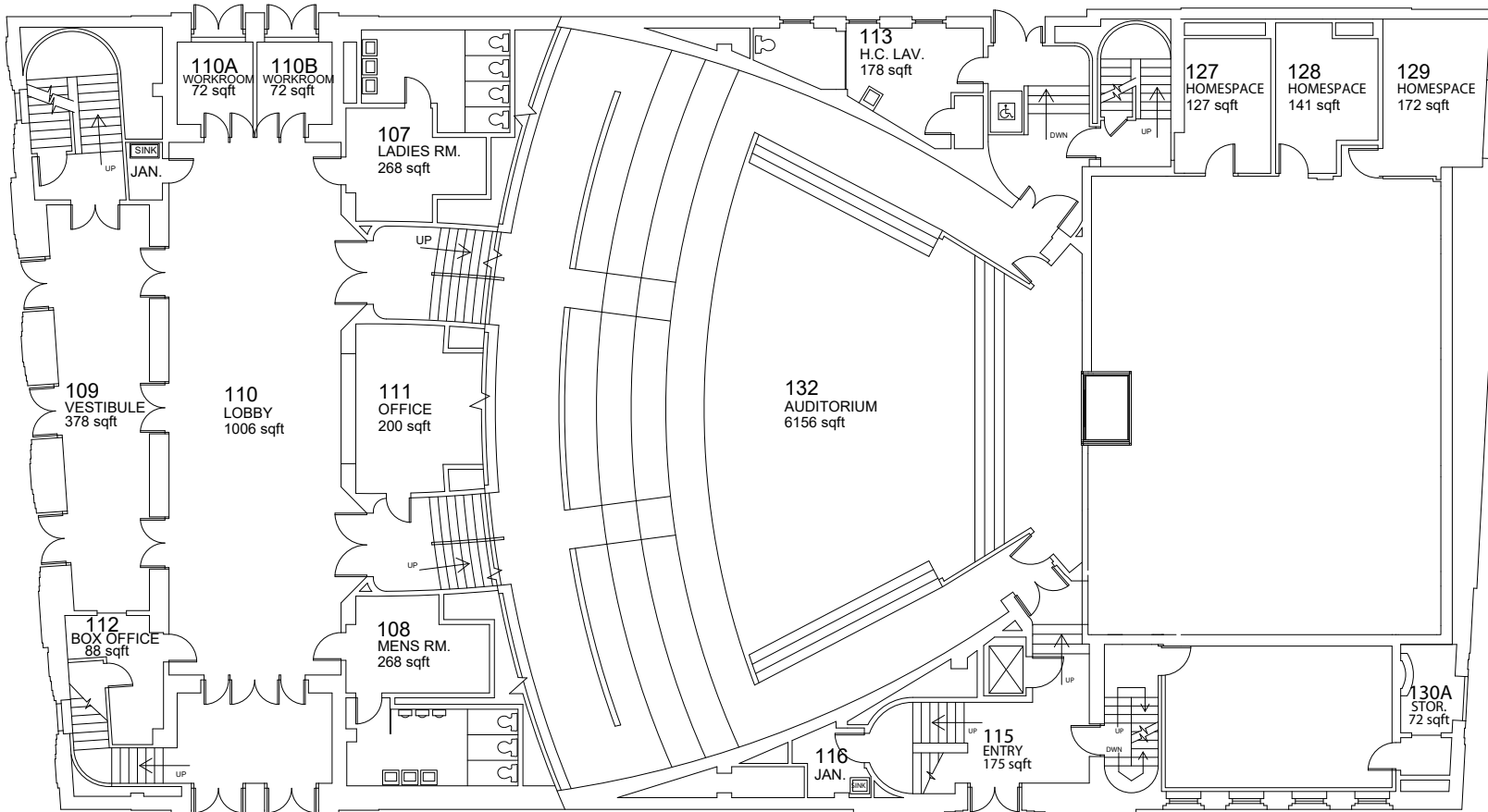
PROGRAM

The RISD Auditorium has transitioned from existing, mixed studio program and auditorium space to a hybrid space that functions as a club with an open lobby atrium, rooftop restaurant and bar for meetings and dining, and eight-room hotel accommodations, with minor changes and moves made to the existing studio programs, making FAV the exclusive department in the space.



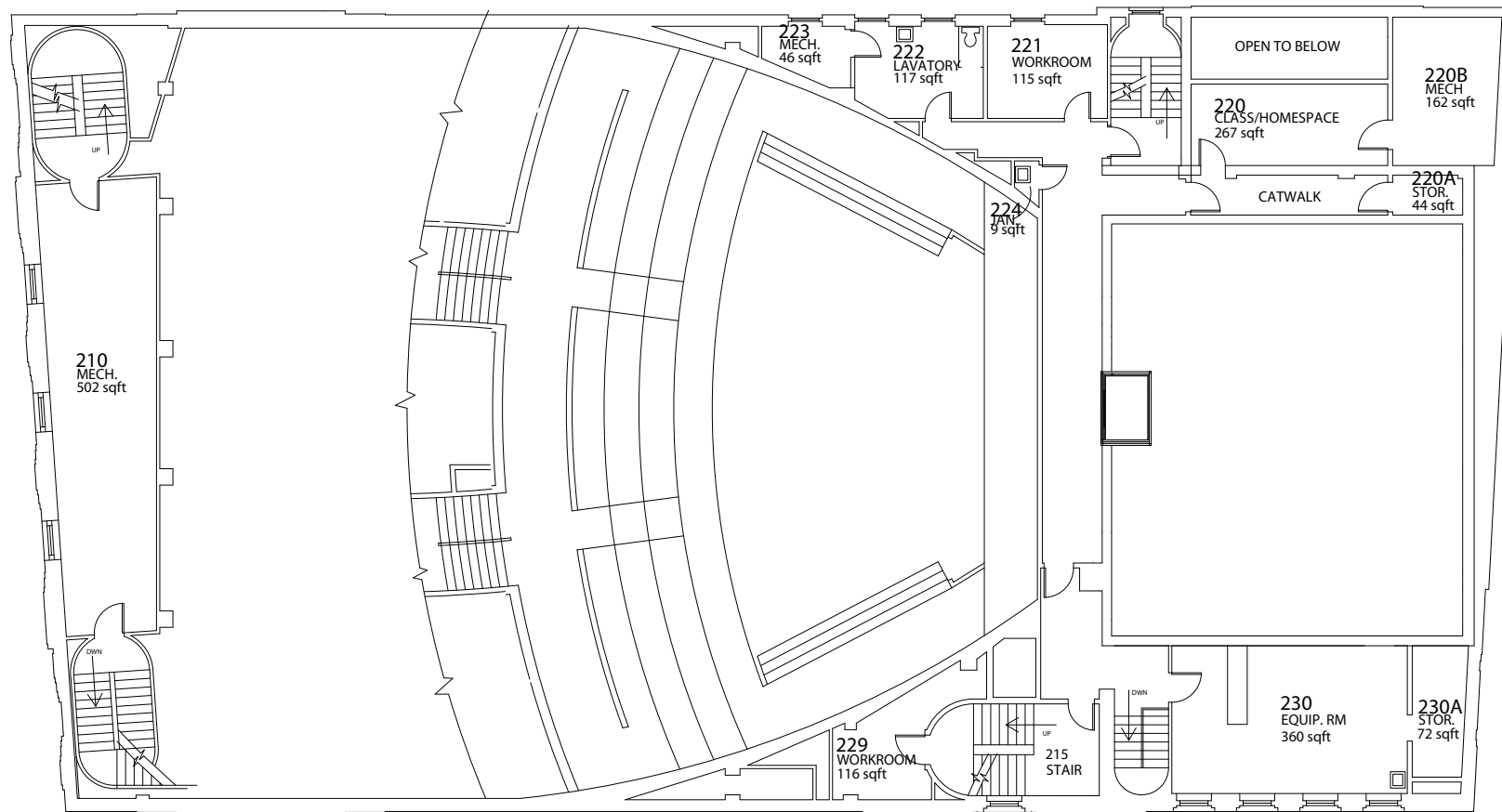
BASEMENT

The existing basement is opened up and used as two, separate screening spaces. The larger screening space has a catwalk for filming and provides double the square footage as the original space. The double-height space and controlled lighting make the basement ideal for filming.



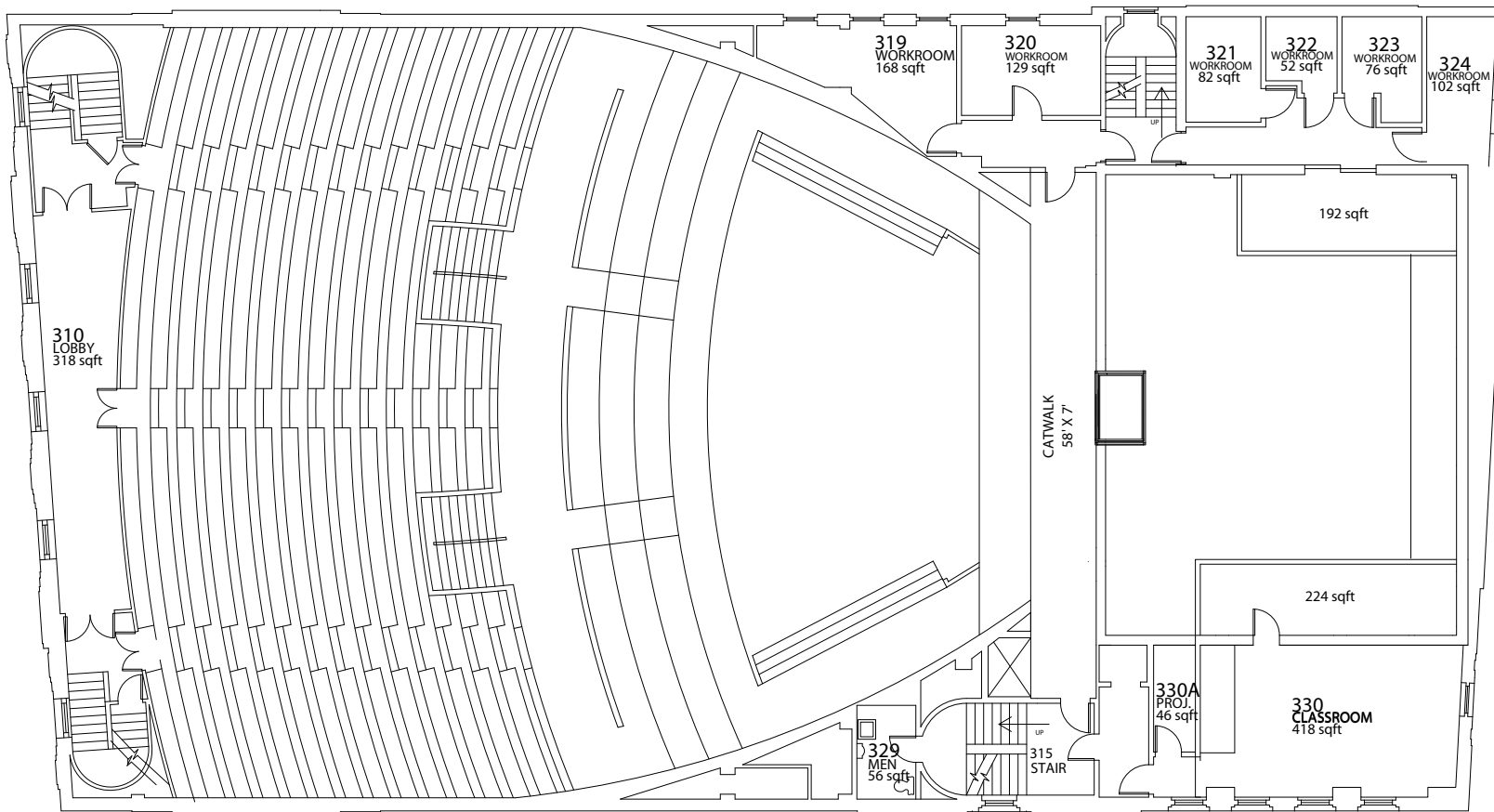
1ST FLOOR

A new entrance into the fly tower of the RISD Auditorium is created in addition to a new glass elevator that travels through all seven floors of the the new atrium.



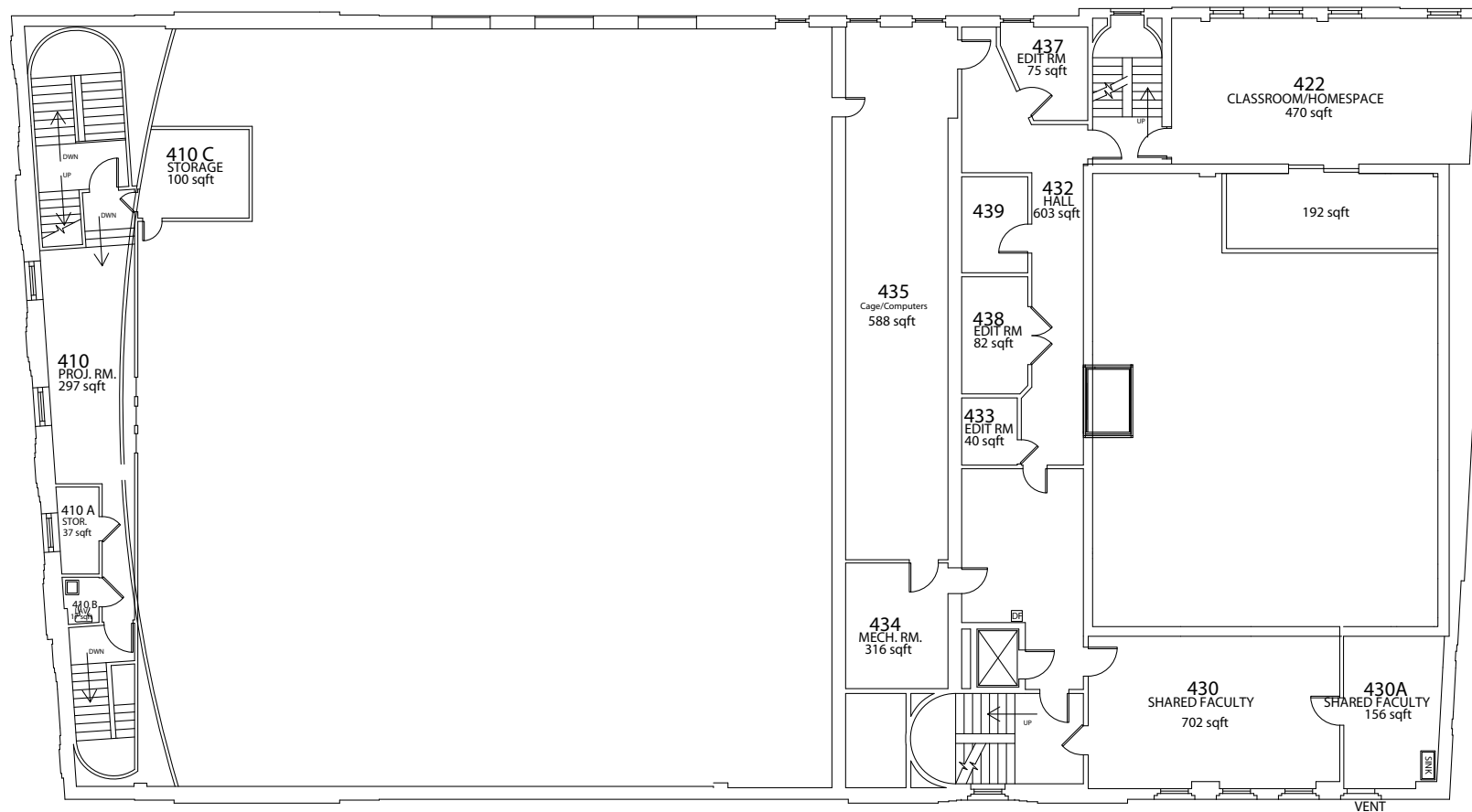
2ND FLOOR

The second floor remains the same, except for the now open atrium with glass elevator.



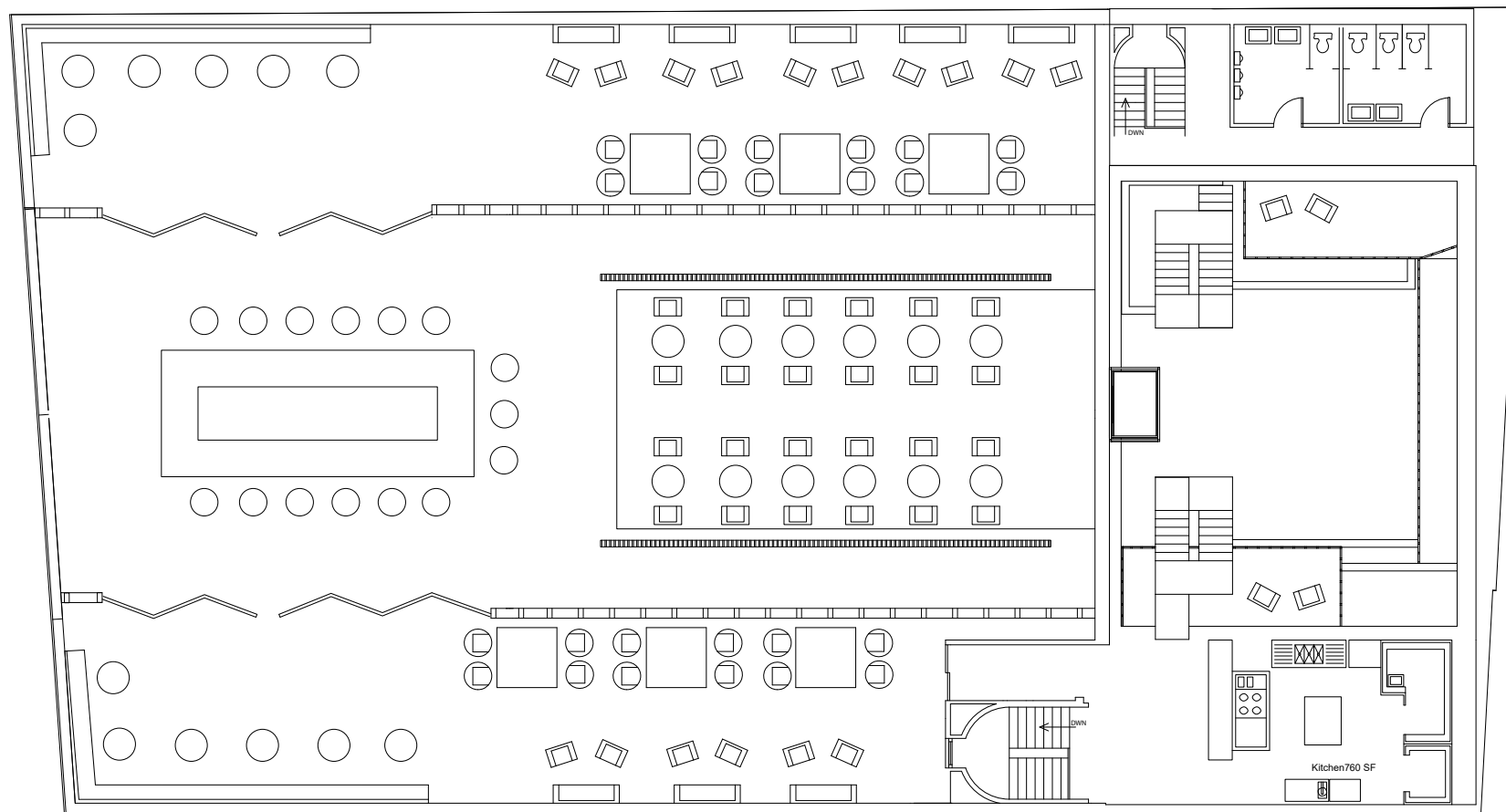
3RD FLOOR

The third floor introduces cantilevered space in the form of an extended balcony off of existing classroom space (330) with a catwalk connecting to a balcony located across the hallway from individual editing bays.



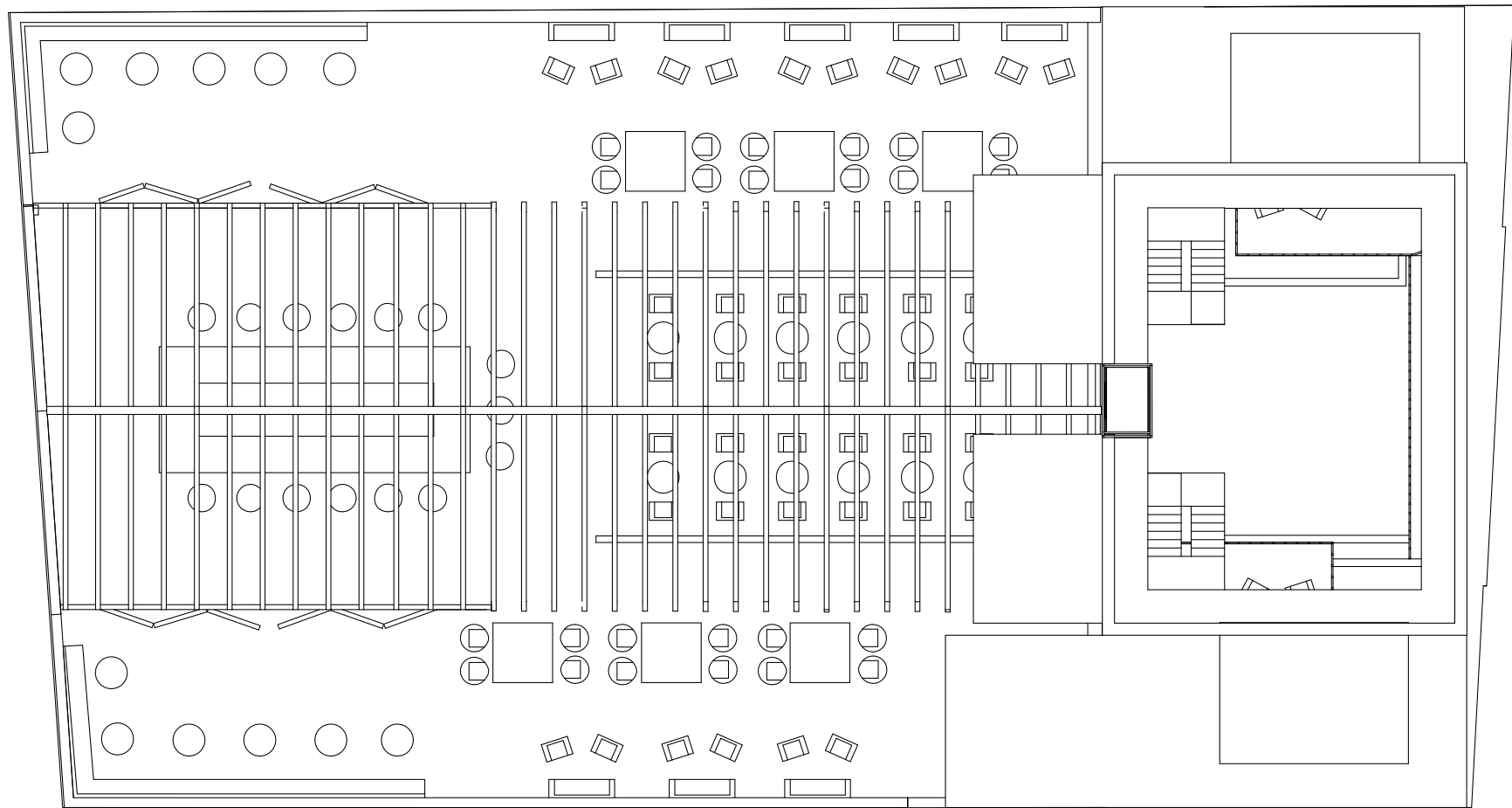
4TH FLOOR

The addition of another cantilevered balcony allows for students in senior homespace (422) to go straight into the atrium.



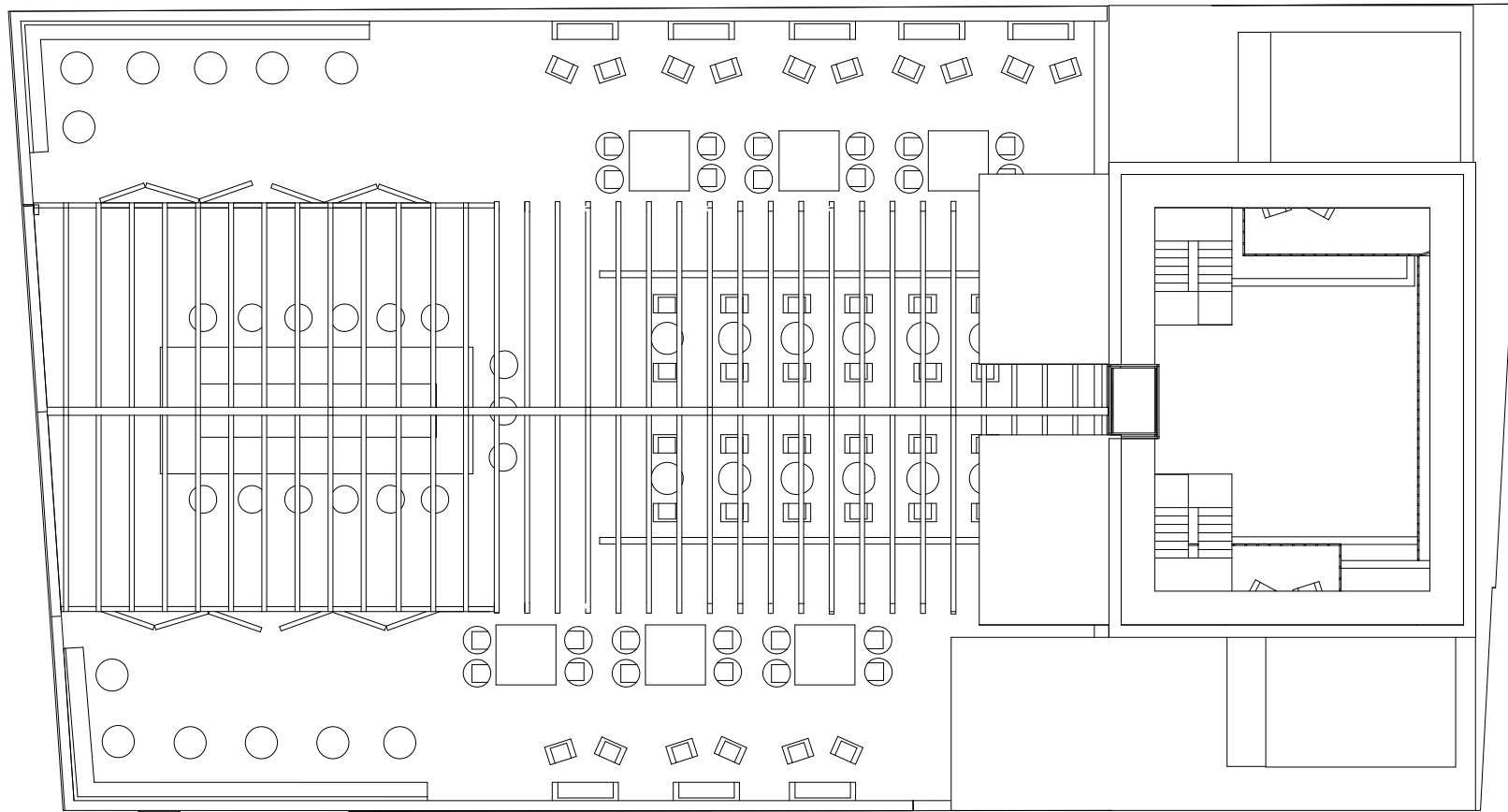
5TH FLOOR

The fifth floor houses the new restaurant and bar area, where students, professors, alumni, and visiting artists and designers gather for conversation. The hotel rooms are accessed by elevator as well as two, open stairs.



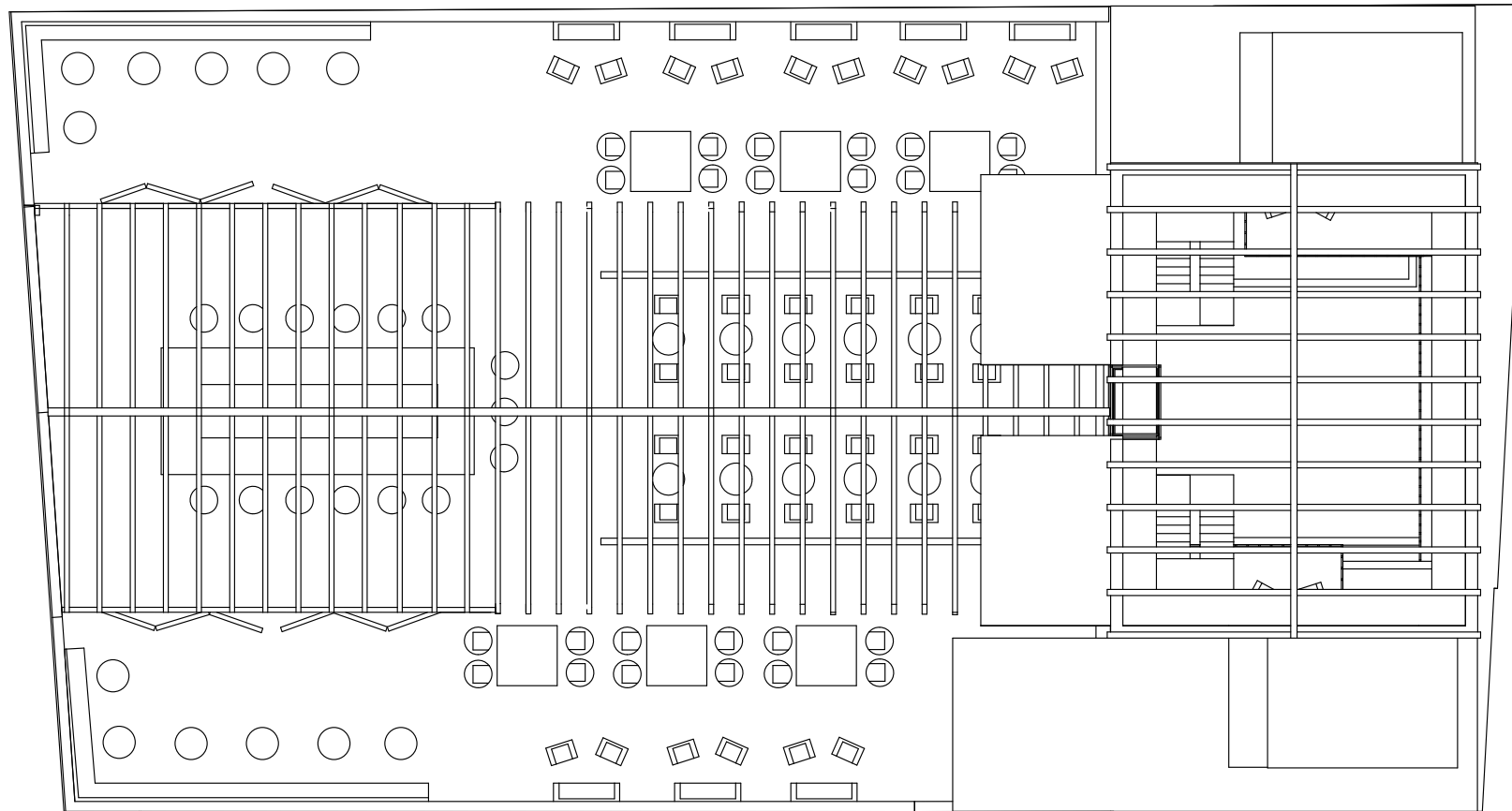
6TH FLOOR

The sixth floor of the fly tower houses four accommodation spaces that are accessed by elevator or a set of stairs from the fifth floor level.



7TH FLOOR

The seventh floor houses the additional four accommodation spaces, where guests can get the best views of campus and the canal.

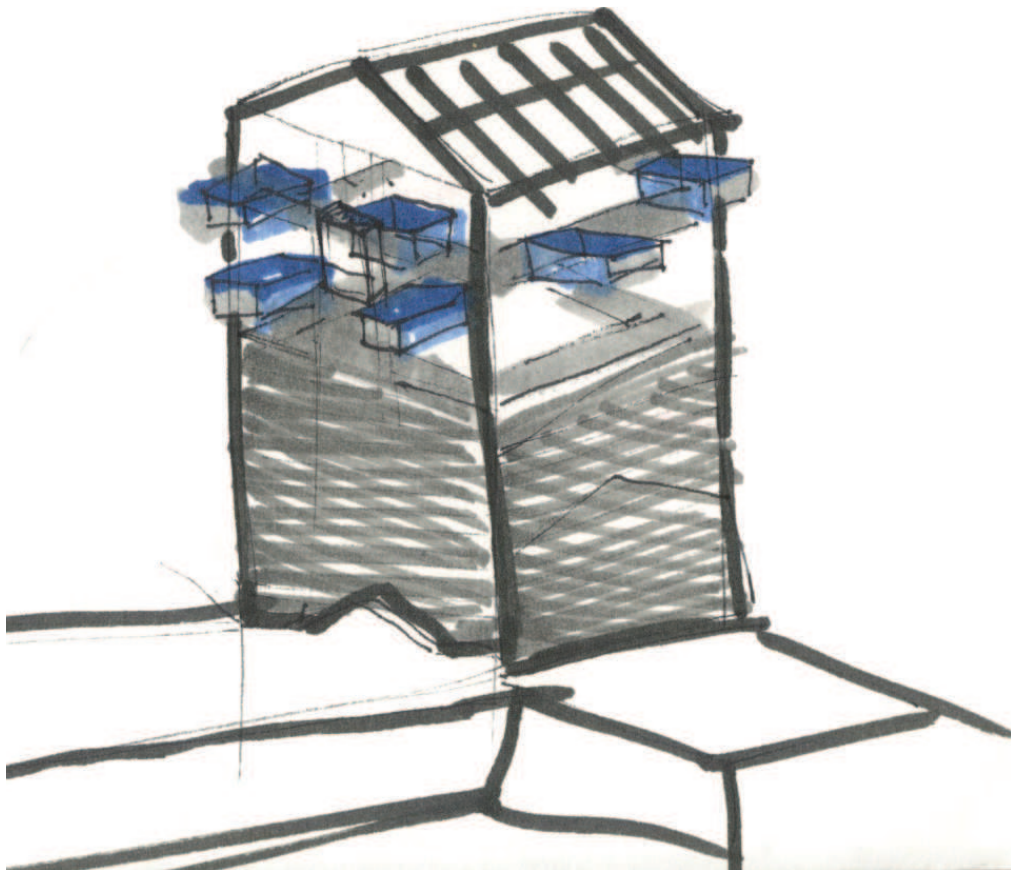


ROOF PLAN

The fly tower is topped with a steel and glass roof that allows for the light to enter the entire atrium space.

VIEWS OF DOWNTOWN

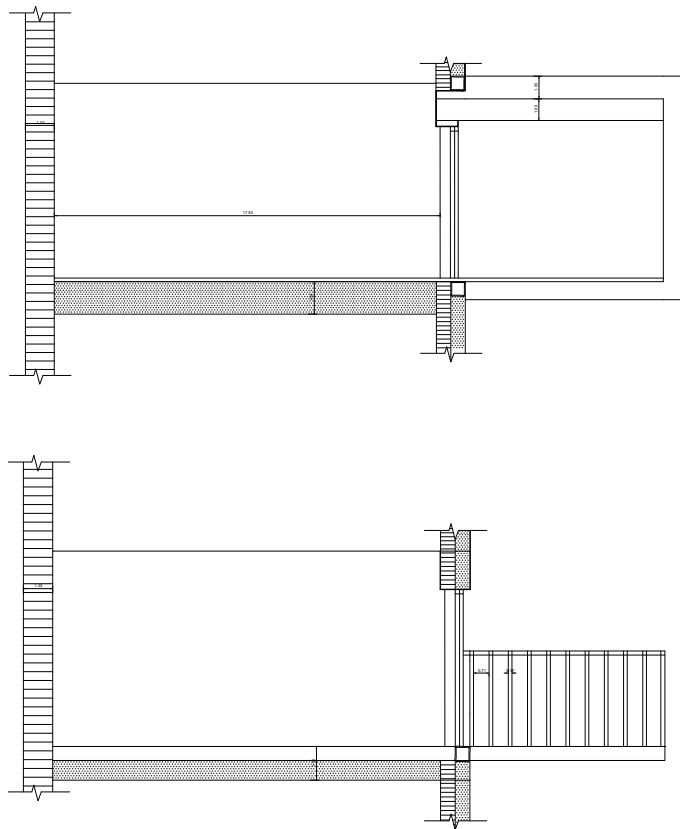
The new views created by the additional two-stories added to the existing fly space will become quickly, sought-after scenes of the heart of Providence. The RISD auditorium's position along the water edge allows for a connection not only to campus but to the busy downtown centre.

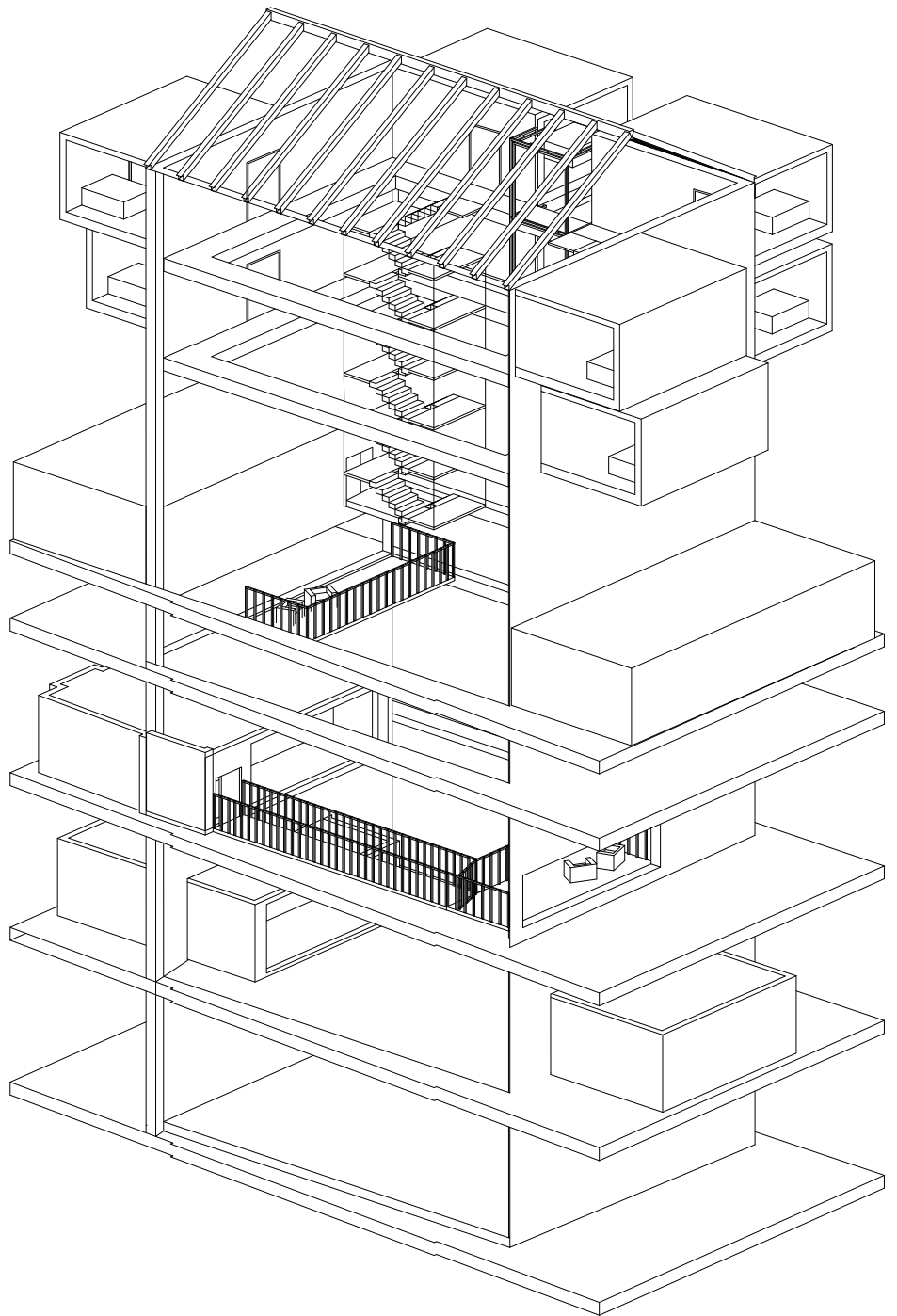




FLY TOWER

Not only is the new fly space intervention a restoration of the original space, it opens up a new language between FAV studio spaces and visitors as they use the space as an open lobby and main means for travel up through the seven levels of the auditorium building.





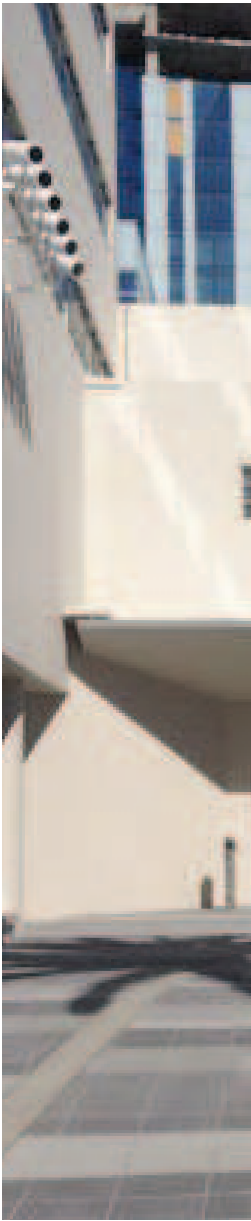
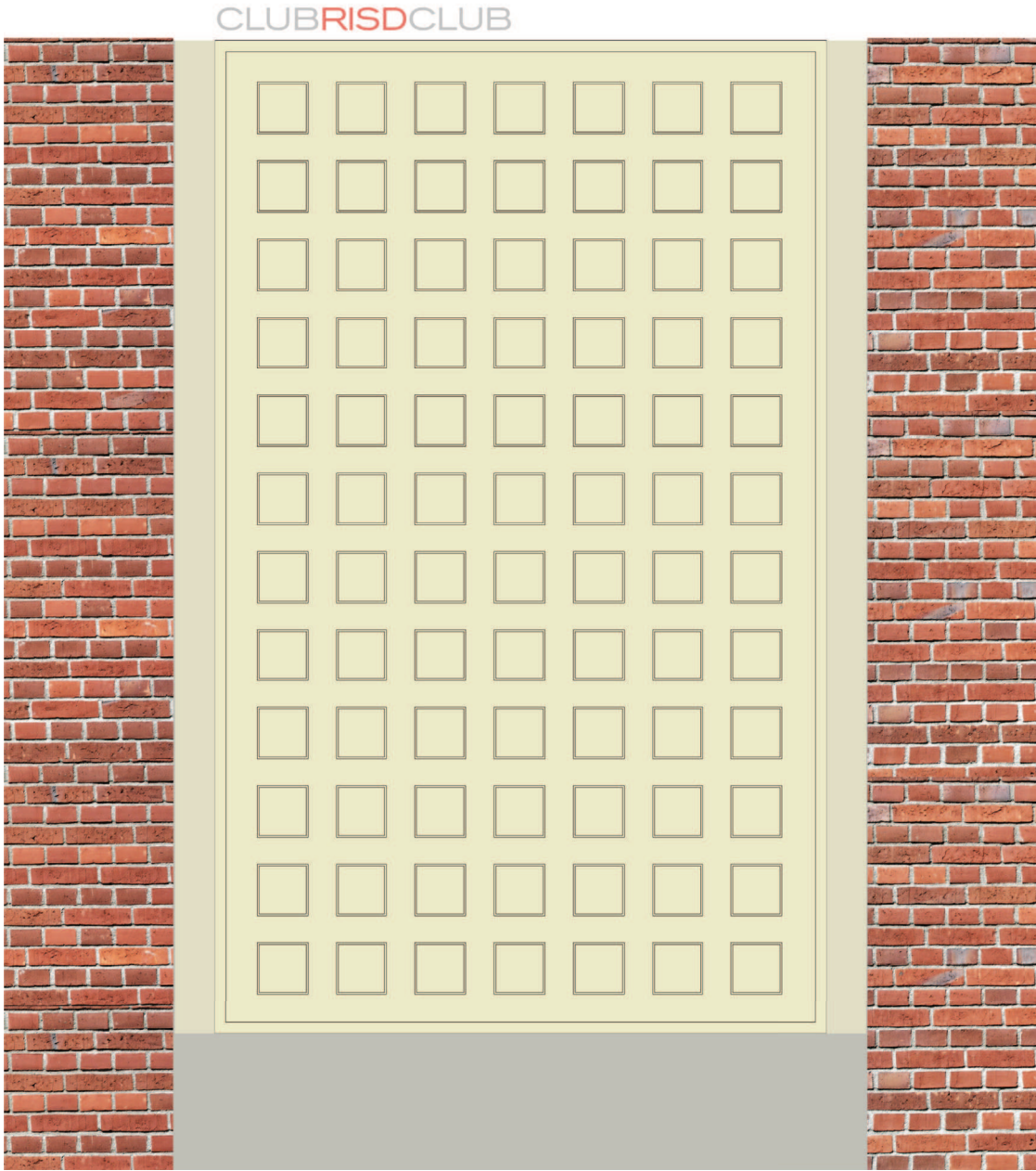
NEW ENTRANCE

The newly defined entrance on N. Main Street acts as an exclusive entrance, calling attention only to those students headed to class or the alumni, artists, and designers entering to visiting the restaurant, bar, or to check into their hotel rooms.

1.



2.



1. Existing deliveries door on North Main Street, 2. New entrance design, 3. Neue House entrance, 4. Soho House NYC entrance, 5. Entrance door to Pioneer Works, 6. Harvard Club entrance



3.



4.



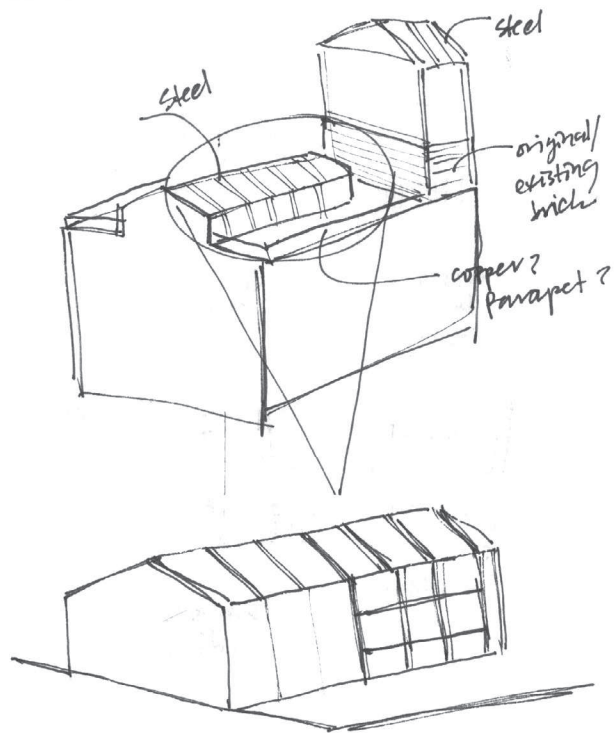
5.

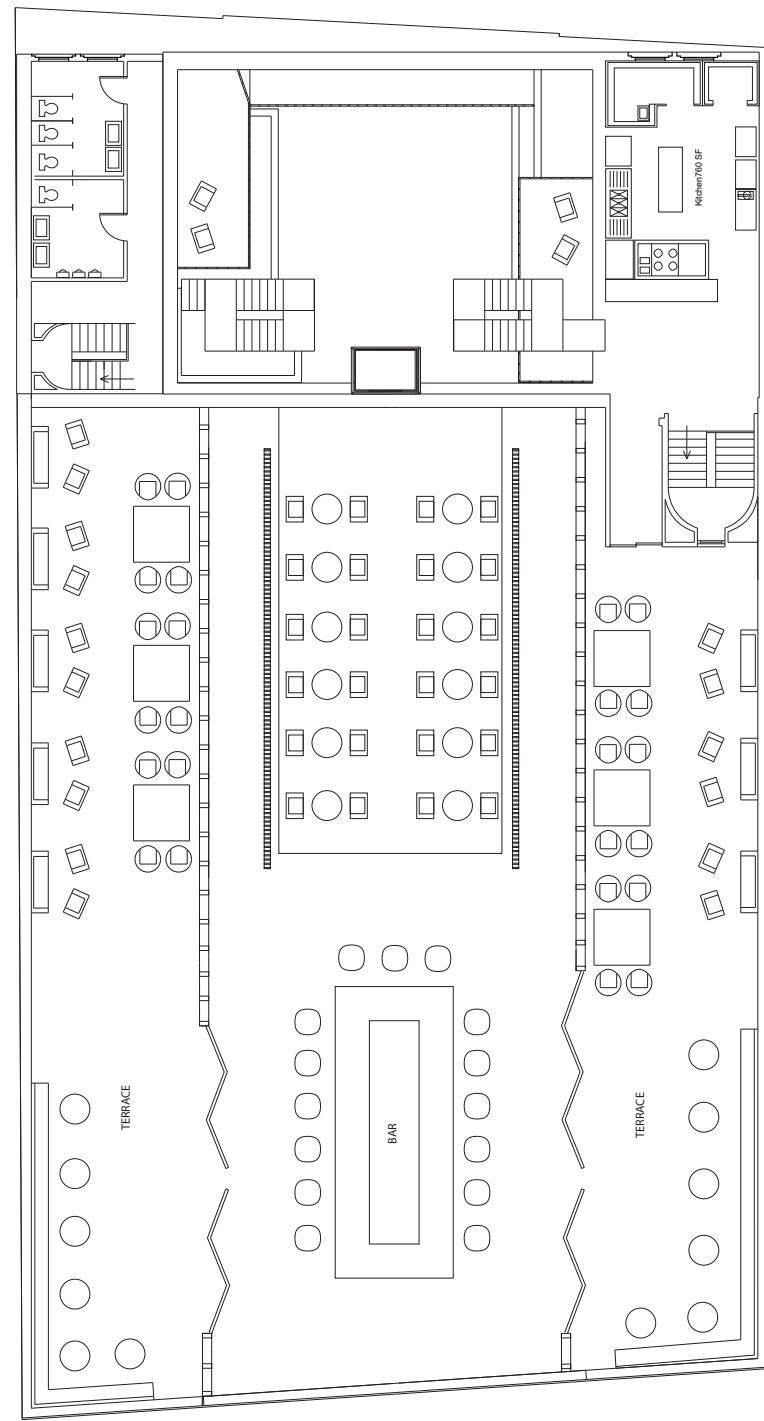
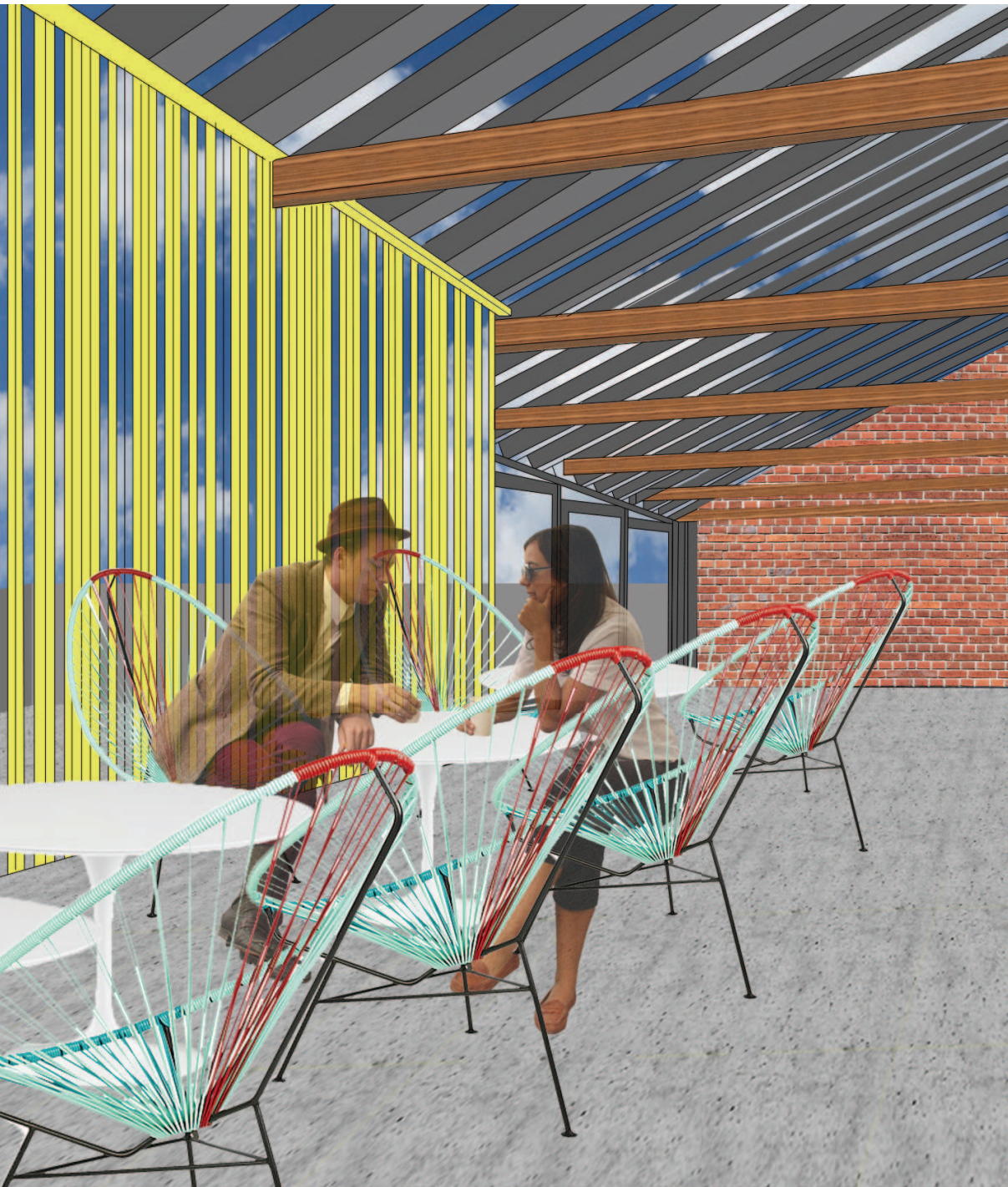


6.

ROOFTOP RESTAURANT & BAR

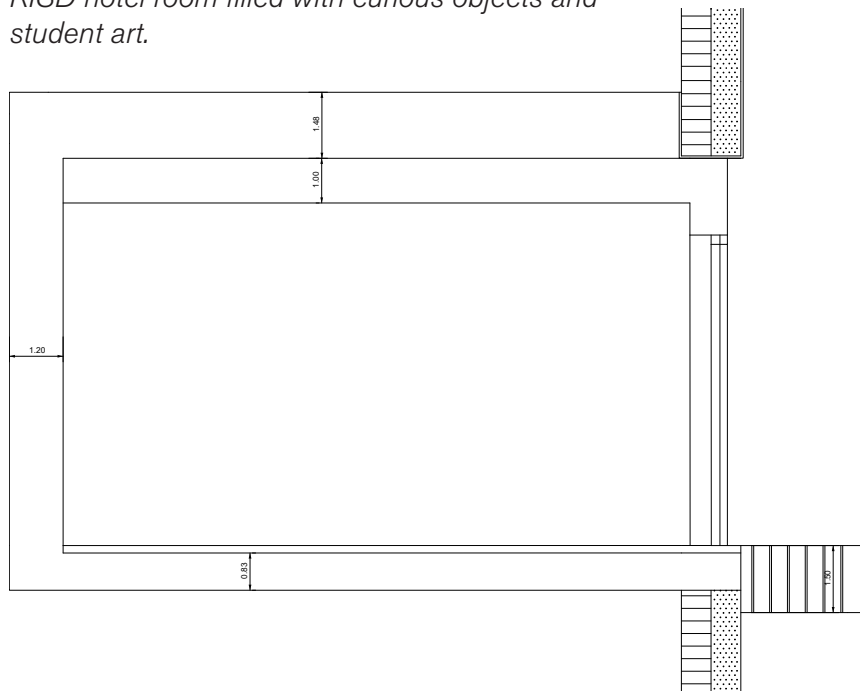
Adding a restaurant and bar to the new program will allow for space dedicated to leisure among existing students, faculty, and visiting artists and designers. Not only does RISD lack a space created for this purpose, it also lacks a space in the center of campus that can provide anything from an afternoon of study or a 6:00 pm dinner between faculty members. Providing this type of "breeding ground" will allow for connections between people you never would have met otherwise.





HOTEL

To top off the experience of visiting RISD and the various campus departments, alumni and visiting artists and designers will have the opportunity to live within the community, while getting exclusive access to otherwise exclusive studio spaces, and the RISD restaurant and bar. Until now, there has never been an accommodation space branded exclusively for the RISD community, providing guests with the ultimate RISD hotel room filled with curious objects and student art.



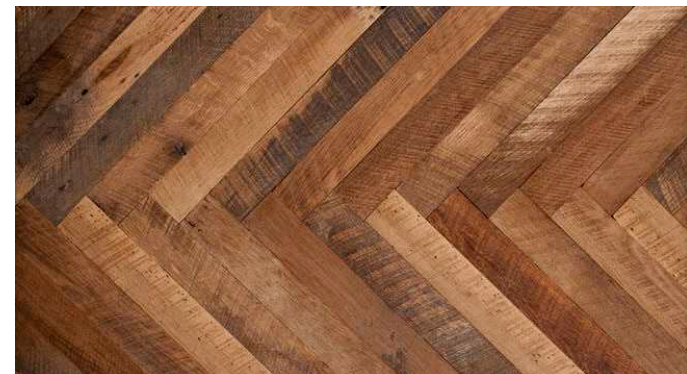
1.



2.



3.



1. Toni Morrison and Me for Lenny Letter by Jia Sung (RISD Illustration), 2. Ceramic tile for bathroom, 3. Reclaimed wood for herringbone flooring



BIBLIOGRAPHY

Old + New

<http://www.archdaily.com/627946/fine-arts-museum-of-asturias-francisco-mangado>

Fine Arts Museum of Asturias addresses the ‘urban complex’ by utilizing transparent glazing as a way to reveal history

<http://social-housing.tumblr.com/post/64830369420/subtilitas-claus-en-kaan-architecten>

Exterior images of the Haarlemmerbuurt social housing project

<http://kaanarchitecten.com/souvenir-projects/haarlemmerbuurt-amsterdam/>
Concept drawings and models of the Haarlemmerbuurt social housing project by Kaan architecten

<http://www.archdaily.com/330863/rotermanns-old-and-new-flour-storage-hga>
The design approach of Rotermann’s old and new flour storage was to relate and strengthen the character of historical quarter through finding and adopting the character of the surroundings through connection between old and new, addition to old, and reflection of new onto new plaza

Glass Insertion

<http://www.archdaily.com/326251/shoreditch-rooms-archer-architects>
Insertion of new ‘box within a box’ hotel, adjacent to the existing Shoreditch House Members Club

<http://www.archdaily.com/780385/fahle-house-koko>
Former industry building turned hybrid architecture with the use of a new glass box added to the top of the existing building

<http://www.kpmb.com/index.asp?navid=30&fid1=0&fid2=34#desc>
Revitalization project that includes a glass box (the ‘lantern’) on top of the original Victoria Memorial Museum Building to provide dialogue between past and present

<https://architizer.com/projects/wythe-hotel/>
The Wythe hotel in Dumbo, Brooklyn provides guests with bohemian guest rooms and views of downtown

BIBLIOGRAPHY

Artist Societies

<http://www.pioneerworks.com>

Artist residency and event information about Dustin Yellin's Pioneer Works in Red Hook, Brooklyn.

<http://www.neuehouse.com>

Membership and event description and information about Neue House in Los Angeles and New York.

<http://www.harvardclub.com>

The Harvard club of Boston provides memberships for alumni, providing future connection through various events.

Images

<http://jia-sung.com/#/toni-morrison-and-me-lenny-letter/>

<http://www.risd.edu/academics/fav/>

<http://www.risd.edu/academics/fav/undergraduate/>

<http://www.arcspace.com/features/rafael-moneo/chase-center-risd-museum-of-art/>

http://risdmuseum.org/manual/392_risd_museum_tops_ads_picks_for_best_university_art_museums

http://risdmuseum.org/art_design/exhibitions/109_all_of_everything_todd_oldham_fashion

<http://highlighthollywood.com/2016/03/risd-museum-named-best-gallery-or-museum-in-rhode-island-2016-highlight-hollywood-exclusive-news/>

<http://our.risd.edu/post/129876601254/risd-recognizes-outstanding-staff>

<https://livestream.com/RISD/virgil-abloh>

<http://academicaffairs.risd.edu/2017/01/artist-talk-annie-mok-012517-risd-auditorium/>

<http://id.risd.edu/events/2017/4/17/sebastian-errazuriz-lecture>

<http://wesaidgotravel.com/discovering-something-different-los-angeles/>

<https://www.oyster.com/new-york-city/hotels/soho-house-new-york/photos/entrance--v2609110/>

<http://nypost.com/2014/08/18/members-angry-as-harvard-club-becomes-increasingly-stingy/>

<http://www.onthegrid.city/brooklyn/red-hook/pioneer-works/>

