

Summer 2008

# Designing Traditions: Student Explorations in the Asian Textile Collection

Kate Irvin

Laurie Anne Brewer  
lbrewer@risd.edu

Anais Missakian  
*Rhode Island School of Design*, amissaki@risd.edu

Follow this and additional works at: [https://digitalcommons.risd.edu/risdmuseum\\_journals](https://digitalcommons.risd.edu/risdmuseum_journals)



Part of the [Art and Design Commons](#)

---

## Recommended Citation

Irvin, Kate; Brewer, Laurie Anne; and Missakian, Anais, "Designing Traditions: Student Explorations in the Asian Textile Collection" (2008). *Journals*. 17.  
[https://digitalcommons.risd.edu/risdmuseum\\_journals/17](https://digitalcommons.risd.edu/risdmuseum_journals/17)

This Journal is brought to you for free and open access by the RISD Museum at DigitalCommons@RISD. It has been accepted for inclusion in Journals by an authorized administrator of DigitalCommons@RISD. For more information, please contact [mpompeii@risd.edu](mailto:mpompeii@risd.edu).





## Designing Traditions: Student Explorations in the Asian Textile Collection

August 8 - December 7, 2008

**MUSEUM OF ART**

RHODE ISLAND SCHOOL OF DESIGN





LEFT

**Joseph Aaron Segal (MFA 2009)**

American, b. 1982

*Tunic*, 2008

Linen; plain weave, hand painted, screen printed, center back length 34 in. Courtesy of the artist TL70.2008.29

*As I learned about how the Indian tunic's form was inspired by spiritual beliefs, I became fascinated with the concept and meaning of the piece. The idea of deflecting the evil eye with mirrors became my main source of inspiration as well as concepts of fear and destruction.*

BOTTOM RIGHT

Indian, Gujarat state; or Pakistani, Sindh province

*Woman's tunic* (detail), late 19th/early 20th century

Cotton, silk; plain weave, embroidered, mirrorwork, center back length 26 in.

Bequest of Isaac C. Bates 13.2314



ABOVE LEFT

**Soo Hyun Kim (BFA 2010)**

Korean, b. 1987

*Textile length*, 2008

Linen; plain weave, screen printed, embroidered, 52 x 53 in.

Courtesy of the artist TL70.2008.10

*My design was based on the traditional Korean hemp shoes (mituri), and I was inspired by the craftsmanship of such commonplace objects. I loved the dry texture and braided structure, and I wanted to show that on my design. The progress of developing the design was very free and intuitive; I researched more pictures of mituri and freely drew with ink on paper, and one of the drawings became the final design. The design was somewhat abstract, and I used linen fabrics and neutral colors to match the dry feel of the mituri.*

ABOVE RIGHT

Korean

*Man's shoes (mituri)*, early 20th century

Hemp; interlaced, knotted, 10 1/2 in. length

Gift of George R. Pratt 52.535.8





ABOVE  
**Deborah J. Kim** (BFA 2009)

Korean American, b. 1986  
 Vest, 2008  
 Wool, cashmere, metallic yarn; machine knit,  
 center back length 21 1/4 in.  
 Courtesy of the artist TL70.2008.38

*The simple shape of the garment and the simply shaped motifs that contribute to it were the main attraction of the Indonesian man's top. I was inspired by the sense of flatness and the box-like structure. Another aspect that caught my attention was the way it looked on a human form. On a form, the shoulders of the man's top created a dimension of its own. For the shape of my garment, I wanted to stick to the basic box-like form that had interested me, but decided to bring the shoulders out a bit.*

ABOVE RIGHT  
 Indonesian, North Sumatra, Aceh province  
*Man's top*, first half 20th century  
 Cotton; plain weave, machine embroidered,  
 resist dyed, 14 3/4 x 13 3/4 in.  
 Helen M. Danforth Acquisition Fund and  
 Gift of Paula and Leonard Granoff 2003.40.8

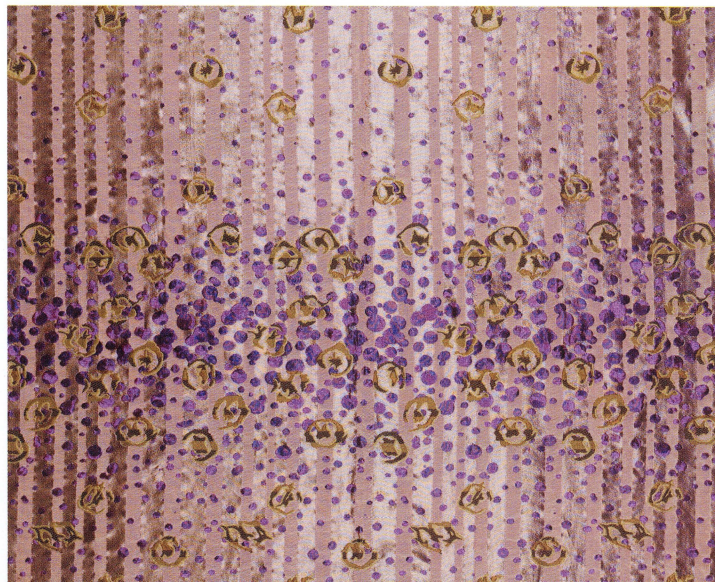


BELOW  
**Ju-Hee Maeng** (BFA 2009)

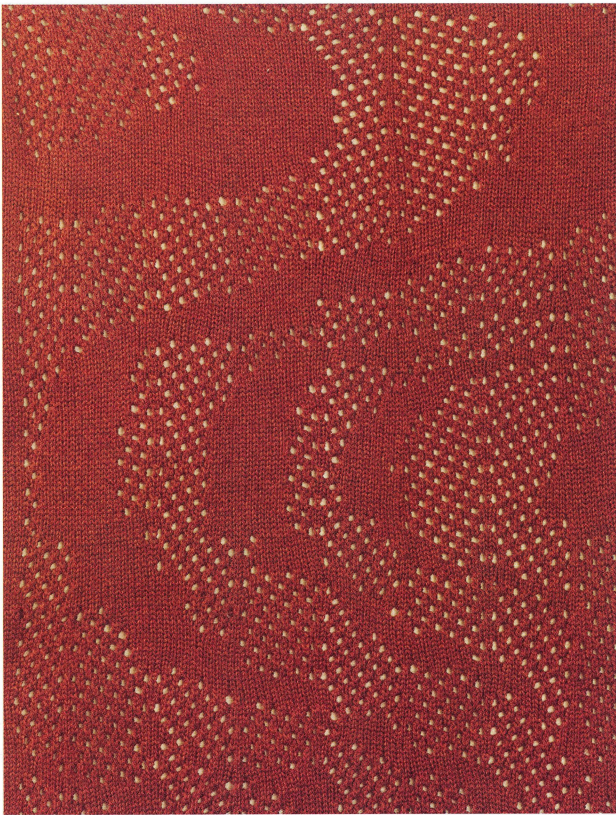
Korean, b. 1986  
 Textile length, 2008  
 Cotton, synthetic fiber; jacquard weave  
 Courtesy of the artist TL70.2008.41

*I did not want to lose the feeling of the original piece. I was interested in the pattern on the bottom of the shoes. Nails were once placed on the bottom to protect the soles from wear. Over time the nail was removed and a pattern was left behind.*

RIGHT  
 Korean  
*Man's shoes (taesabye)*, late 19th century  
 Silk, leather, rubber?; damask weave,  
 appliquéd, length 10 in.  
 Gift of Nelson A., Laurance S., and  
 David Rockefeller 56.082







ABOVE LEFT

**Megumi Caitlin Doi** (BFA 2009)

Japanese American, b. 1986  
*Knit sample* (detail), 2008  
 Wool blend; machine knit, 14 x 14 1/2 in.  
 Courtesy of the artist TL70.2008.18

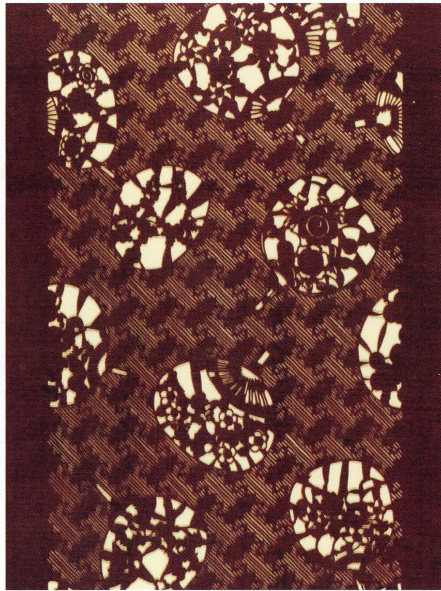
*The lacy detailing of the stencils led to an in-depth investigation of lace structures created on the knitting machine. Through fully understanding the technique involved in creating lace on the knitting machine, I was able to see a parallel between the knit fabric and the carved Japanese stencils.*

ABOVE RIGHT

Japanese  
*Stencil* (detail), 19th century  
 Handmade mulberry paper (*kôzo*),  
 persimmon tannin, 9 1/2 x 14 in.  
 Gift of Mrs. Gustav Radeke 05.109

This brochure was made possible through the support of the Office of Academic Affairs and RISD's Rantoul Fund and the assistance of Jay Coogan, Provost (2006-2008).

Thanks are owed to Anais Missakian and Maria Tulokas for their enthusiastic involvement from the project's inception and to the RISD faculty and textiles staff Liz Collins, Gina Gregorio, Brooks Hagan, and Vedrana Hrsak for their energetic willingness to participate in this project; and special gratitude to Joanne Ingersoll for her encouragement and cheer. We also acknowledge RISD's Professor Holly Hughes and former Associate Curator Pamela Parmal's 1998 exhibition *Drawn from the Collection: Part of the Fabric*, the first in what we hope will become a series of fruitful collaborations.



COVER IMAGES

RIGHT

**Rachel Van Timmeren** (BFA 2009)

American, b. 1986  
*Design for printed textile* (detail), 2008  
 Handmade paper (celery fiber),  
 linen yarn; collage, 26 x 20 in.  
 Courtesy of the artist TL70.2008.23

*Fascinated by the stencils' delicate surfaces, intricate details, and the careful, labor-intensive processes used to make them, I tried to capture an ethereal, sensitive quality that conveyed their incredible, almost other-worldly essence. The easily accessible natural materials required to make and preserve the many layers of thin paper that formed the stencil led me into my own exploration of everyday fibers that can be made into paper. To reference the importance of Japanese observation of nature, I created screen-printed patterns to overprint and combine with hand sewing and cutaway areas.*

LEFT

Japanese  
*Stencil* (detail), 19th century  
 Handmade mulberry paper (*kôzo*),  
 persimmon tannin, 12 x 16 1/4 in.  
 Bequest of Isaac C. Bates 13.472