

Fort Hays State University

FHSU Scholars Repository

Master's Theses

Graduate School

Summer 1962

Creative Expression in Ceramic Design

Eleanor Miller

Fort Hays Kansas State College

Follow this and additional works at: <https://scholars.fhsu.edu/theses>



Part of the [Art and Design Commons](#)

Recommended Citation

Miller, Eleanor, "Creative Expression in Ceramic Design" (1962). *Master's Theses*. 765.
<https://scholars.fhsu.edu/theses/765>

This Thesis is brought to you for free and open access by the Graduate School at FHSU Scholars Repository. It has been accepted for inclusion in Master's Theses by an authorized administrator of FHSU Scholars Repository.

CREATIVE EXPRESSION IN CERAMIC DESIGN

An Abstract

Presented to

Dr. Joel Moss

and the Faculty of the Graduate School

Fort Hays Kansas State College

In Partial Fulfillment

of the Requirements for the Degree

Master of Science in Art Education

by

Eleanor Miller

July 1962

Thesis Abstract

Miller, Eleanor 1962 Creative Expression in Ceramic Design

The purpose of this study was to explore the effects and possibilities of earthenware and stoneware when formed by the pinch or thrown methods. After some experimentation with the two methods it was decided to continue to form various shapes and sizes by the wheel method and discover suitable ornamentation and glazes for each.

Rounded forms created by the wheel method seemed to be the most satisfactory. Some of these forms were made in two or three pieces on the wheel and joined by slip and cross-hatching after the forms were firm enough to support the upper section.

In some of the clay bodies a colorant or speckling agent, such as milled or granular ilmenite, iron oxide, chromium oxide or manganese oxide was used for various effects when used with certain glazes or in a reduction fire. Incised, sgraffito, or brushed effects were used to relieve the plainness of some forms. Most of the glazes for both earthenware and stoneware were matt except where a transparent or rutile effect was desired to enable a design to show through or to mingle colors. The hand built sculpture, "In the Beginning of Time," was stained and waxed requiring no glaze.

Experimentation with the various methods, clay bodies,

colorants, glazes, sizes, and shapes, has brought the writer to the conclusion that rounded forms have been the most satisfactory and pleasing, and that the possibilities in this method for further creative expression are unlimited.

7c
Round Incised Bowl
Matt Stoneware Glaze

Height 7 in.

Diameter 8 in.

1962

Stoneware Vase

h. 6 in.

d. $4\frac{1}{2}$ in.

White matt glaze

1962



Wheel thrown Earthenware Jug
Tan and brown speckled matt glaze

h. 12 in.

d. 9 in.

1962



Covered Bowl

Reduction fired white matt glaze
with lavender blend and brown blotched

h. 8 $\frac{3}{4}$ in.

d. 7 $\frac{1}{2}$ in.

1960



Wheel Thrown Footed Vase

Tan and brown speckled matt glaze

h. 11 $\frac{3}{4}$ in.

d. 8 $\frac{1}{2}$ in.

1962

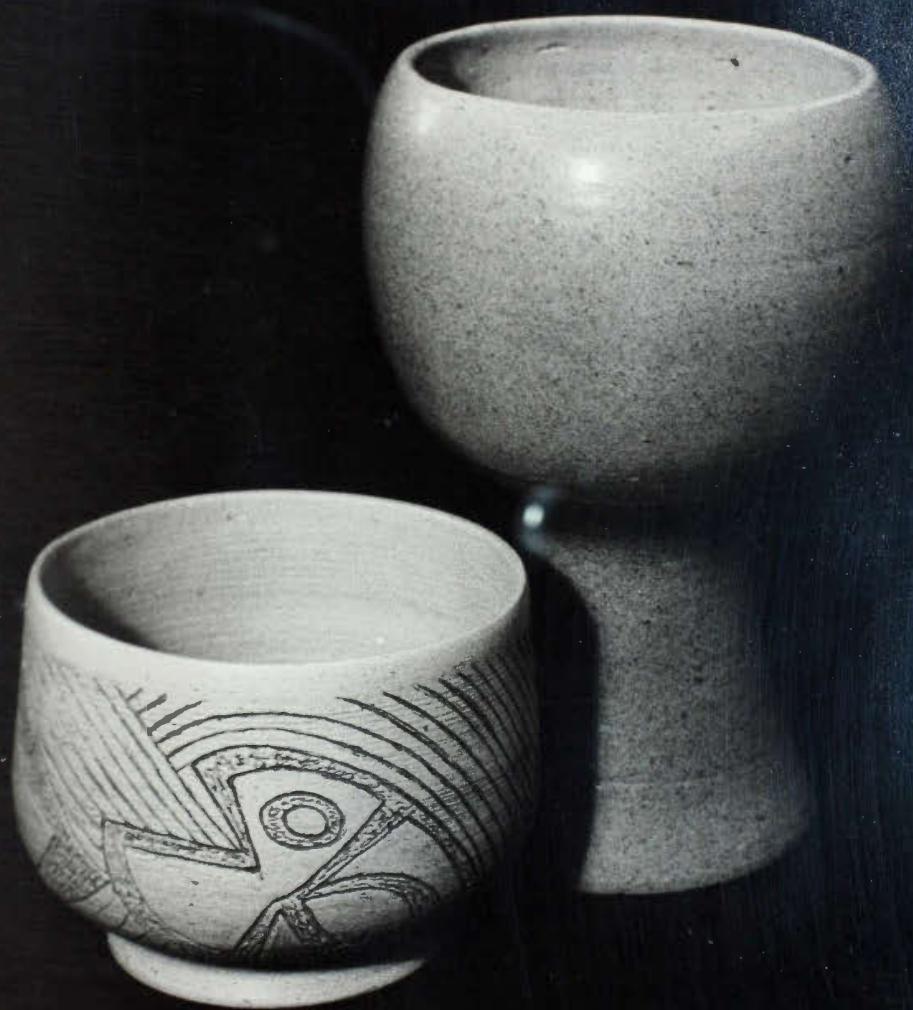
Incised Stoneware Bowl

Stained, matt glazed, reduction fired

h. 5 $\frac{1}{2}$ in.

d. 6 in.

1962



Stoneware Bottle

Reduction fired, two toned blue matt glaze

h. 14 in.

Stoneware Vase

Reduction fired white matt with
golden brown markings

h. 6½ in.

d. 4½ in.



Earthenware Vase

Incised, blue stained, with
white translucent glaze

h. 8 in.

d. 5 in.

1962

Stoneware Covered Bowl

Blended black and brown rough
textured matt with white interior

h. $8\frac{1}{2}$ in.

d. $6\frac{1}{2}$ in.

1958



Stoneware Bottle

Tan and Brown Speckled Matt

h. 14 in.

d. 6 in.

1962

Stone Ware Bowl

Brown Rough Texture on Pale Yellow

Reduction fired

h. $5\frac{1}{2}$ in.

d. $8\frac{1}{2}$ in.

1961



Sculpture

"In the Beginning of Time"

Stained and waxed after firing

h. 15 in.

1958

