

Rowan University

Rowan Digital Works

Libraries Scholarship

University Libraries

11-7-2018

Adapting Library Workflows to Accommodate Transferred Journals

Christine Davidian

Rowan University, davidian@rowan.edu

Jennifer K. Matthews

Rowan University, matthewsj@rowan.edu

Follow this and additional works at: https://rdw.rowan.edu/lib_scholarship



Part of the [Collection Development and Management Commons](#)

Let us know how access to this document benefits you - share your thoughts on our feedback form.

Recommended Citation

Davidian, Christine and Matthews, Jennifer K., "Adapting Library Workflows to Accommodate Transferred Journals" (2018). *Libraries Scholarship*. 10.

https://rdw.rowan.edu/lib_scholarship/10

This Article is brought to you for free and open access by the University Libraries at Rowan Digital Works. It has been accepted for inclusion in Libraries Scholarship by an authorized administrator of Rowan Digital Works. For more information, please contact rdw@rowan.edu.

A large, stylized graphic of a torch with a yellow flame, set against a light gray circular background. The torch is white with a yellow flame at the top. The background of the slide is white with a large gray circle and a yellow curved shape at the bottom.

Adapting Library Workflows to Accommodate Transferred Journals

Christine Davidian and Jennifer Matthews
Rowan University

Charleston Conference
November 7, 2018

Rowan University

- 1923 Glassboro State College (Normal school)
- 1950 Glassboro State University
- [1992 Henry M. Rowan donated \\$100 million](#)
- 1997 Rowan University
- 2012/2013 Merged two medical schools
 - 2012, Cooper Medical School of Rowan University (Allopathic)
 - 2013, Rowan School of Osteopathic Medicine (Osteopathic)
- September 2017, Rowan classified as an R3 Carnegie institution
- Growth features:
 - Rapidly growing enrollment (3,550 increase in 3 years)
 - FTE Fall 2018 = 16,917.50
 - 176 new tenure track faculty hired in five years, initiative to hire 100 more in next five
 - [New PhD programs](#)
 - Gradual change from a Normal school to STEM emphasis

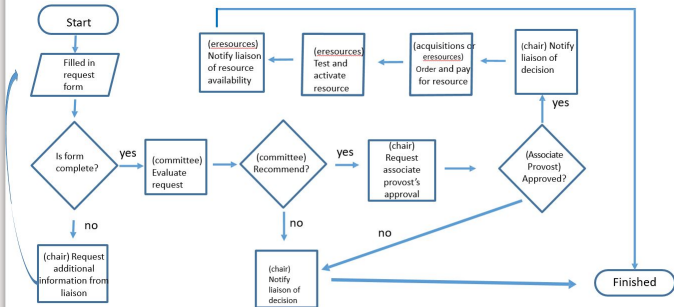


Rowan University - Campbell Library Website Landing Page

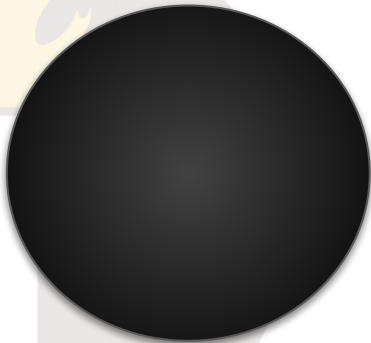
The screenshot shows the Campbell Library website landing page. At the top, the Rowan University logo and 'CAMPBELL LIBRARY' are displayed. The current time is 8am - 9pm. A navigation bar includes links for 'START YOUR RESEARCH', 'FIND', 'SERVICES', 'SPACES & COLLECTIONS', and 'ABOUT', along with a search bar for library sites. The main content area features a 'ProfSearch' section with a search input field and a 'Search' button. To the right, a 'Need Help?' section offers options like 'Chat is Offline', 'Ask a Librarian: FAQs', 'Research Guides', and 'Subject Librarians'. Below this is a row of service icons: Database Finder, Start Your Research, Group Study Rooms, Interlibrary Loan, Course Reserves, and My Library Accounts. The bottom section is divided into four columns: 'Search Tools' (listing ProfSearch, Library Catalog, Database Finder, E-Journal Finder, E-Book Finder, and Citation Linker), 'Quick Links' (listing Government Documents, RefWorks, EndNote, Learning Express Library, WorldCat, and Rowan Digital Works), 'User Guides' (listing Faculty & Staff, Graduate Students, Alumni & Visitors, Off-Campus & Distance Learners, and Printing, Scanning, Computing), and 'NEWS' (listing articles about the Light of Books, the Student Advisory Council, TAP, and the SHOP, with a 'More News' link). The 'EVENTS' column is currently empty.

Collection Development Committee

Collection Development Request Workflow 8/1/2018



Rowan University Libraries Transferring Journals Workflow 2014



[HOME](#)[SEARCH](#)[BROWSE](#)[STATISTICS](#)[API](#)

Welcome to the Transfer Alerting Service

The [NISO Transfer Code of Practice](#) sets out best practices for scholarly publishers to ensure that journal transfers between parties occur with minimum disruption and that the content remains accessible. The Transfer Alerting Service (TAS) has been designed to facilitate communication of journal transfers and is hosted by the International ISSN Centre.

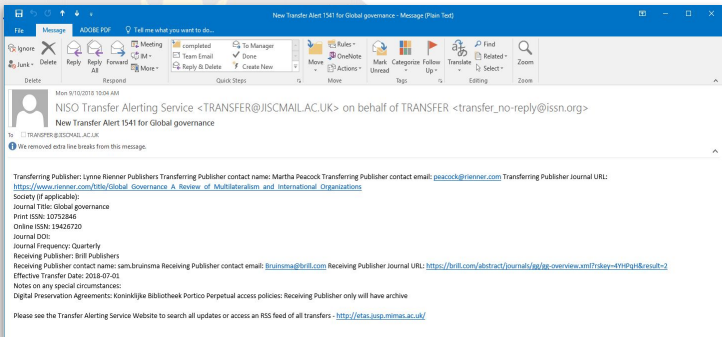
The TAS is made up of:

- A database of journal transfers which can be [searched](#) or [browsed](#). This allows librarians and other interested parties to access the details of journal transfers announced through the TAS and provides an archive of transfer information supplied by publishers using the service.
- A notification service available through an [RSS feed](#) or by signing-up to an email list. Librarians, information professionals, and representatives of other organisations with an interest in journal transfers are encouraged to sign up to the list. Every time a journal transfer is announced through the TAS, registrants receive email alerts detailing the journal(s) involved, bibliographic information, and contact details for the publishers involved.
- An [API](#) which may be used by interested parties to query or integrate with the TAS.

Publishers are required to register with the International ISSN Centre to provide journal transfer information for announcement through the TAS. Under the terms of the Code, endorsing publishers are required to use the service whenever they receive a new journal.

For complete information about the Transfer Code of Practice please visit the NISO website (<https://www.niso.org/standards-committees/transfer>).

Transfer Alerting Service RSS Feed Email



Mon 9/10/2018 10:04 AM

NISO Transfer Alerting Service <TRANSFER@JISCMail.AC.UK> on behalf of TRANSFER <transfer_no-reply@issn.org>
New Transfer Alert 1541 for Global governance

To: TRANSFER@JISCMail.AC.UK

We removed extra line breaks from this message.

Transferring Publisher: Lynne Rienner Publishers Transferring Publisher contact name: Martha Peacock Transferring Publisher contact email: peacock@rienner.com Transferring Publisher Journal URL: https://www.rienner.com/title/Global_Governance_A_Review_of_Multilateralism_and_International_Organizations

Society (if applicable):
Journal Title: Global governance
Print ISSN: 10752846
Online ISSN: 19426720
Journal DOI:
Journal Frequency: Quarterly
Receiving Publisher: Brill Publishers
Receiving Publisher contact name: sam.bruinsma Receiving Publisher contact email: bruinsma@brill.com Receiving Publisher Journal URL: <https://brill.com/abstract/journals/jg/jg-overview.xml?rskey=4YHDqH&result=2>
Effective Transfer Date: 2018-07-01
Notes on any special circumstances:
Digital Preservation Agreements: Koninklijke Bibliotheek Portico Perpetual access policies: Receiving Publisher only will have archive

Please see the Transfer Alerting Service Website to search all updates or access an RSS feed of all transfers - <http://etas.usp.mimas.ac.uk/>

Subscription Agent (EBSCONET) Transfer Notifications



Dear Customer,

This email is to inform you of changes to journals you subscribe to through EBSCO.

These changes will be displayed in the E-Journal Updates section of EBSCONET. Some changes require a response from you; others are simply informative or may require action but no response.

By clicking the link(s) below, you will first be presented with the EBSCONET login page; Upon login you will be directed to the appropriate E-Journal Updates section of EBSCONET.

Publisher changes:

This section lists journals that have been acquired by a new publisher.

No response is required; publisher's Web site.

<http://www.ebsconet.com>

Accounts affected: RB 04

Thank you,

EBSCO Information Service

EBSCO
Account Number: RB047540
Subscriber Code: 01
Send Notice Location

CAMMELL LORANDY
ROWAN UNIVERSITY
201 BELLEVILLE AVE
GLASSBORO, NJ 07033

Title Search Orders Renewals Reports Analysis Notifications Help
E-Journal Updates - Change in Publisher
Review/Cancel Changes Completed Changes Archive Online Available Change in Publisher Package Changes Near Open Access Titles

E-Journal Updates - Change in Publisher
Titles within your collection have experienced a change in publisher. The previous and future publishers are listed below, along with the effective date of the change.
Notification Date: 08/13/2018 * Notifications will be removed from this list after 1 year.

Available Fields

Title Name	Previous Publisher	New Publisher	Effective Date	Registration ID	Subscriber Name	Fund Code	EJS Number	Order Number
Journal of Social Development & Business	EBSCO INFORMATION FOR THE WORLD	SHAR PUBLISHING INC	8/13/2018	AB	EBSCO ILR 0120 0003	CRS096		0207220

Items per page: 20 | Page: 1 of 1 | Results: 1 | Microsoft Excel | Export

Content Provider Transfer Notifications

Wiley Library Services <e-service@wiley.com>

librarysysig

Your Wiley Journals Update

Click here to download pictures. To help protect your privacy, Outlook prevented automatic download of some pictures in this message.

2019 New and Takeover Journals

Right-click or tap and

Stay up-to-date on what's new in our ever-growing portfolio of over 8 million articles from 1,600+ journals, covering the full spectrum of life, health and physical sciences, social science and the humanities.

View the [2019 Wiley Journal Changes flyer](#) to learn more about our new journals.

Download Now

2019 Wiley Journal Changes

TAKEOVER JOURNAL TITLES FOR 2019

CODE	TITLE	eISSN	PREVIOUS PUBLISHER
BJR	British Journal of Radiology	1748-880X	Previously published by BMJ group
DMFR	DentoMaxilloFacial Radiology	1476-542X	Previously published by BMJ group
ERE	Ecological Research	1440-1703	Previously published by Springer
EAHR	Ethics & Human Research	2578-2363	Previously Self-Published by The Hasting Center

Transferring Journals Spreadsheet

	A	B	C	D	E	F	G	H	I	J	K	L	M
#	Title	ISSN	Old Publisher	New Publisher	Effective Date	Current Subscription	Action Taken In Intola (retext)	Action Taken for new publisher	Initial Spreadsheet	Date Entered in Spreadsheet	Collection Committee Notes	Notes	Notes
1							added 2018 end date - old 1/1/2018						
1	Population Ecology	1438-3896	Springer	Wiley	1/1/2019	Springer American ClinicalKey Files /ScienceDirect				if	6/25/2018	refer to Liaison - DB	subscribe from wiley in 2019 per DB
4	PMS&N	1934-1482	Elsevier	Wiley	1/1/2019	Freedom 2017				if	6/25/2018	subscribe from wiley in 2019 per committee	
5	Ethics & Human Research (HR)	0193-7758	Huabinger Center	Wiley	1/1/2019	Academic Search Complete				if	6/25/2018		don't do anything in 2018; check status in 2019
5	Thrombosis and Haemostasis	0340-0245	SCHATTAUER GMBH	GEORG THIEME VERLAG STUTTGART	1/1/2019	Schattauer Scientific Journals	we subscribe through Thiem already. I activated the	we subscribe through Thiem already. I activated the		if	6/27/2018		n/a nothing to do
7	Annals of Mathematics	0003-8902	MATHEMATICAL SCIENCES PUBL	ANNALS OF MATHEMATICS / FINE	1/1/2019	Library Literature & Information Science / LISTA	n/a	n/a	if	7/16/2018			ISTOR title
8	Indexer: the international journal of	0009-4521	Society of Indexers	Liverpool University Press	1/1/2019	Proquest Central/ Academic Search Complete	n/a	n/a	if	7/26/2018			n/a nothing to do; review in 2019
9	Polymers from Renewable Resources	2041-2479	Smithers Rapra	Sage	6/15/2019	Search Complete Canadian Mathematical Society	n/a	n/a	if	7/24/2018			n/a nothing to do; review in 2019
0	Canadian Journal of Mathematics	0008-454X	University of Toronto Press Jour	Cambridge University Press	1/1/2019	Journals				added 2018 end d	if	7/24/2018	get usage stats
1	Law & social inquiry	0887-6546	Wiley	Cambridge University Press	1/1/2019	Wiley collection				added 2018 end d	if	7/31/2018	get usage stats
2													
3													
4													
5													
6													
7	green= start of new stats												
8	yellow=no stats needed/ just change end date in intola												
9													

Transferring Journals Spreadsheet Columns



Title	Action Taken in Intota(ERM)
ISSN	Action Taken for New Publisher
Old Publisher	Initials
New Publisher	Date Entered in Spreadsheet
Effective Date	Collection Committee notes
Current Subscription (platforms)	CD (Christine's) notes
	Liaison

Transferring Journal Example

Ideal Outcome

 Rowan University | Libraries

All Journals Only Books Only

Match all words

Search

Show more search options ▼

Showing results 1 through 1 of 1

for the search: Match all words "journal of visual impairment and blindness"

Refine Results: All | Journals Only | Books Only

Limit by: Peer Reviewed | Open Access



Journal of visual impairment & blindness [Terms of Use](#)

ISSN: 0145-482X

[Look up Article](#)

[Journal Details](#) ▼  Peer Reviewed

09/01/1993 to Present in Academic Search Complete | Health Source: Nursing/Academic Edition and MasterFILE Elite
1994 to Present in American Foundation for the Blind Publications

01/01/1996 to Present in CINAHL with Full Text and Education Full Text (H.W. Wilson)

01/01/2005 to 12/31/2012 in ProQuest Central

01/01/2013 to Present in ProQuest Central

Search inside this journal

Search

[Back to Top](#)

Transferring Journal Example with Access Issues



Endocrinology (Philadelphia) [Terms of Use](#)

ISSN: 0013-7227

[Look up Article](#)

[Journal Details](#) ▼  Peer Reviewed

~~01/01/1917 to 2016 in [Endocrine Society Journals](#)
1996 to Present in [Oxford Journals 2017 Medicine Collection](#)
01/01/2017 to 1 year ago in [ProQuest Central](#)~~

Endocrinology (Philadelphia) [Terms of Use](#)

ISSN: 0013-7227

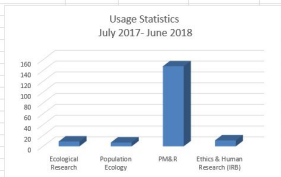
[Look up Article](#)

[Journal Details](#) ▼  Peer Reviewed

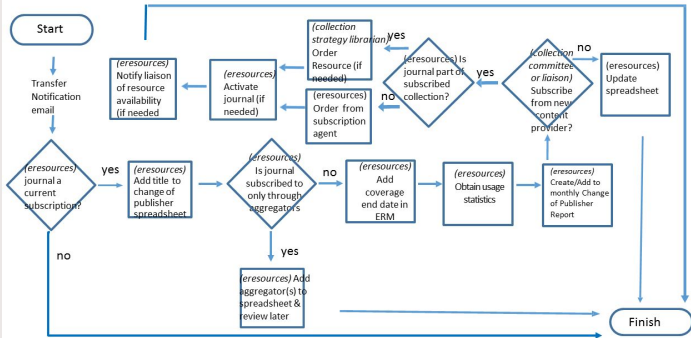
1996 to Present in [Oxford Journals 2017 Medicine Collection](#)
01/01/2017 to 1 year ago in [ProQuest Central](#)

Transferring Journals Report

	Title	ISSN	Old Publisher	New Publisher	Usage Statistics July 2017- June 2018
1					
2	Ecological Research	0912-3814	Springer	Wiley	9
3	Population Ecology	1438-3896	Springer	Wiley	7
4	PM&R	1934-1482	Elsevier	Wiley	148
5	Ethics & Human Research (IRB)	0193-7758	Hastings Center	Wiley	11
6					
7					
8					
9					
10					
11					
12					
13					
14					
15					
16					
17					
18					
19					
20					
21					
22					
23					
24					
25					
26					
27					
28					
29					
30					
31					
32					
33					



Transferring Journals Workflow



Challenges - 1

- Loss of coverage
- Perpetual access rights
- Archive status
- License records documentation
- Contractual constraints
- Aggregators
- Transition lag time

Challenges - 2

Decision-making is complex:

- Committee acclimating to process
- Usage & cost per use
- Accreditation considerations
- Must consider new faculty hired
- Must consider course cycle

Challenges - 3

- Communication
- Receiving publisher doesn't always notify
- Must continually revisit spreadsheet
- Must schedule testing

Solutions & Next Steps

- Conduct follow up testing on regular basis
- Document decisions
- Review and update license records
- Follow up on archive and perpetual access issues

Lessons Learned

- Process has evolved
- Big picture considered
- Accreditation considered
- Title transfers now handled proactively
- Spend time up front instead of after the fact
- Regularly scheduled decision making process
- Need to be proactively aware of backfile issues
- Ongoing Communication needed among stakeholders

Thanks for coming!

Christine Davidian, Electronic Resources and
Serials Librarian, davidian@rowan.edu

Jennifer Matthews, Collection Strategy Librarian,
matthewsj@rowan.edu



This work is licensed under a [Creative Commons Attribution 4.0 International License](https://creativecommons.org/licenses/by/4.0/).