



Winthrop University
**Digital Commons @ Winthrop
University**

Manuscript Collection

Louise Pettus Archives and Special Collections

2019

Francis M. Mack Sr. Papers - Accession 533

Francis Murray Mack Sr.

World War I

World War II

Korean War

Follow this and additional works at: [https://digitalcommons.winthrop.edu/
manuscriptcollection_findingaids](https://digitalcommons.winthrop.edu/manuscriptcollection_findingaids)

Finding Aid Citation

Louise Pettus Archives and Special Collections, Winthrop University, "Francis M. Mack Sr. Papers - Accession 533". Finding Aid 1090.
https://digitalcommons.winthrop.edu/manuscriptcollection_findingaids/1090

This Finding Aid is brought to you for free and open access by the Louise Pettus Archives and Special Collections at Digital Commons @ Winthrop University. It has been accepted for inclusion in Manuscript Collection by an authorized administrator of Digital Commons @ Winthrop University. For more information, please contact bramed@winthrop.edu.



**WINTHROP UNIVERSITY
LOUISE PETTUS ARCHIVES & SPECIAL COLLECTIONS**

MANUSCRIPT COLLECTION

ACCESSION 533

FRANCIS M. MACK SR. PAPERS

1900-1979, nd

12 Boxes, 66 Folders

**WINTHROP UNIVERSITY
LOUISE PETTUS ARCHIVES AND SPECIAL COLLECTIONS**

MANUSCRIPT COLLECTION

ACC. NO.: **533**
ADDITIONS: 1631, ____,

PROCESSED BY: Cathy Morrow
DATE: April 22, 1987
NO. OF SECTIONS: 3

FRANCIS M. MACK, SR. PAPERS

I

The papers of Francis M. Mack, Sr., farmer, veteran of the Mexican Border Dispute, World War I and World War II, Military Mayor of Taegu, Korea, and educator were received by the Winthrop University Archives on October 26, 1983.

Linear feet of shelf space occupied: 3.00
Approximate number of pieces: 6000

Restrictions: Open to researchers under the rules and regulations of the Louise Pettus Archives & Special Collections at Winthrop University.

Literary Rights: For information concerning literary rights please contact the Louise Pettus Archives & Special Collections at Winthrop University.

Notices were released to NUCMC: May 7, 1987.

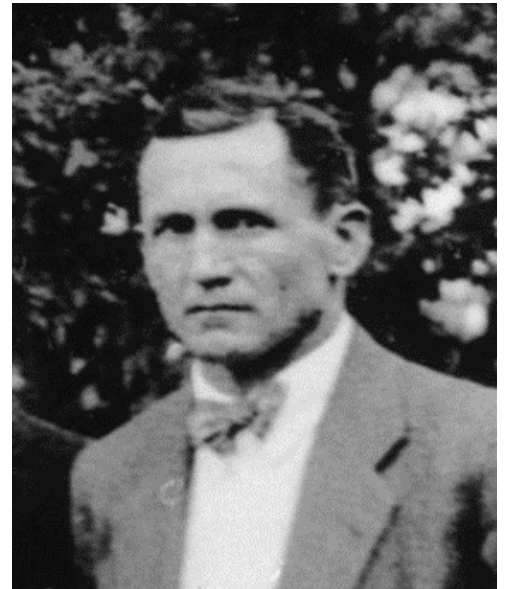
Scope and Content Note: **The Francis M. Mack, Sr. Papers are divided into eight sections. The first section consists of his educational papers and the organization of the Catawba Association. The second section includes papers relating to the Ministers' Annuity Fund. Other sections include his military papers which include numerous maps, papers concerning Camp Campbell and Korea, papers dealing with historical organizations of which he was a member, photographs, newspaper clippings and various pamphlets. There are three appendices which list the names of the pamphlets and the maps and also list the organizations that Francis M. Mack, Sr. was a member.**

II

BIOGRAPHICAL DATA

FRANCIS M. MACK, SR.

1887 (Nov. 13)	Born, Fort Mill, South Carolina
1895-1901	Attended Fort Mill Academy
1901-1902	Attended Douglas Fraser Preparatory School
1902-1904	Attended Davidson College
1908	Attended Cornell College
ca. 1910	Joined National Guard
1914	Mexican Border Dispute
1915	Married Elizabeth White Nims of Fort Mill, S.C.
1918-1919	World War I
1921-1938	Superintendent of Fort Mill Public Schools
1926-ca. 1928	Received B.A. and M.A. from University of South Carolina
1941-1945	World War II
1946-1947	Military Governor of Taegu, Korea
1948-1976	Farmer
1979 July 29	Died



* See Appendix A for a list of organizations of which Francis M. Mack, Sr. was a member.

III

DESCRIPTION OF SERIES

<u>Box(es)</u>	<u>Folder(s)</u>	<u>Series</u>	<u>Year(s)</u>
A) PAPERS RELATING TO EDUCATION			
1	1-5	GENERAL EDUCATION PAPERS Consists of correspondence, intelligence tests, teacher applications, teachers resumes, commencement announcements, papers relating to field work in agriculture, summaries of grade work or school registrar and miscellaneous announcements. In chronological order.	1913-1932, 1963, 1972, nd
2	6	CATAWBA ASSOCIATION Consists of papers relating to the formation of the Catawba Association, the Constitution, schedules, records, and announcements. In chronological order.	1922-1929, nd
2	7	UNIVERSITY OF SOUTH CAROLINA PAPERS Consists of notes, correspondence from Francis M. Mack Sr.'s wife, Elizabeth. In chronological order.	1927, nd
2-3	8-13	NOTEBOOKS Consists of Francis M. Mack Sr.'s notes from the University of South Carolina. The notes originally were in separate notebooks. In chronological order.	1926, 1928, nd
B) PAPERS RELATING TO THE MINISTER'S ANNUITY FUND			
3	14-18	MINISTER'S ANNUITY FUND PAPERS Consists of correspondence, list of quotas for each church involved, how much was received by each church and notes. In chronological order.	1938-1940, nd
C) PAPER RELATING TO THE MILITARY			
4-6	19-30	MAPS Consists of military maps and different types of maps concerning Korea. No arrangement.	nd

III

DESCRIPTION OF SERIES (cont.)

<u>Box(es)</u>	<u>Folder(s)</u>	<u>Series</u>	<u>Year(s)</u>
7	31-34	CAMP CAMPBELL KENTUCKY Consists of rosters and addresses, papers concerning joint exercises, schedules, tests, list of officers and addresses, and army correspondence course examination and answer sheets. In chronological order.	1943-1948, nd
7	35	TAEGU, KOREA Consists of a Korean newspaper, the city budget of Taegu and a table of the organization of the government. No arrangement.	1946-1948, nd
7	36	WORLD WAR I: 118 TH INFANTRY, 1 ST SOUTH CAROLINA INFANTRY This series consists of material, mainly of correspondence and rosters, concerning the 118 th Infantry and the 1 st South Carolina Infantry which Col. Mack fought with during World War I. the correspondence mostly between Francis J. Beaty and Col. Mack and dealt with reunions. Also included is a Domain of the Golden Dragon: International Date Line certificate awarded to Lt. Col. F. M. Mack while aboard the S. S. Chanute Victory ship on August 26, 1946.	1946, 1961-1971, nd

D) PAPERS RELATING TO ORGANIZATIONS

8-9	37-42	SONS OF THE AMERICAN REVOLUTION Consists of miscellaneous correspondence announcements, minutes of meetings, and lists of officers. In chronological order.	1959-1974, nd
9	43	SONS OF THE CONFEDERATE VETERANS Consists of miscellaneous correspondence and names and addresses of sons of the Confederate Veterans Camps in South Carolina. In chronological order.	1973-1975, nd
9	44	SOUTH CAROLINA GENEALOGICAL SOCIETY Consists of a letter accepting Francis M. Mack, receipt of dues, and announcements. In chronological order.	1971-1977
9	45	SOCIETY OF MAYFLOWER DESCENDANTS Consists of miscellaneous correspondence, and announcements. Also includes a completed membership application by Lydia Ardrey. In chronological order.	1969-1973, nd

III

DESCRIPTION OF SERIES (cont.)

<u>Box(es)</u>	<u>Folder(s)</u>	<u>Series</u>	<u>Year(s)</u>
9	46	<p>VARIOUS ORGANIZATIONS</p> <p>This series consists mainly of correspondence related to various organizations that Col. Mack belonged to or worked with. The organizations include: Confederation of South Carolina Local Historical Societies, Rotary Club; Fort Mill Chamber of Commerce; South Carolina Farm Bureau; State Young Men's Christian Association; York County Economic Opportunity Commission; York County Association for Mental Health; Piedmont Area Development Association in York County; York County Retired Teachers Association; York County Council on Aging; South Carolina Arts Commission; York County School Board of Education (includes a deed and land survey [Feb. 4, 1900] giving Mrs. Lee Y. Blankenship's land in Fort Mill, SC to Gold Hill Academy),</p>	1900-1975, nd
<p>E) MISCELLANEOUS</p>			
10	47	<p>CORRESPONDENCE</p> <p>This series consists of correspondence mostly from family and friends. Some of the correspondence is from fellow members of the 118th Infantry and the 1st South Carolina Infantry which Col. Mack fought with during World War I. There are other letters sent to various persons regarding an array of topics.</p>	1938, 1962-1974, nd
10	48	<p>ARTICLES, SPEECHES, AND WRITINGS</p> <p>This series consists of articles, speeches and other writings of Col. Mack which cover mostly the history of the area, especially Fort Mill, SC. There is a biography of James Henley Thornwell, and articles concerning or titled, "Masonry and the Church," "Fort Mill Troop No. 1, Boy Scouts of America," Tour of local historical sites and historical houses, "Miscellaneous Assets of York County" which details the demographics and attributes of the county (1958), a history of the Nation Ford, and a history of Philadelphia United Methodist Church. There is also an autobiographical sketch of Col. Mack as well.</p>	1953, 1958, 1963, nd

III

DESCRIPTION OF SERIES (cont.)

<u>Box(es)</u>	<u>Folder(s)</u>	<u>Series</u>	<u>Year(s)</u>
10	49	<p>HISTORY AND GENEALOGY</p> <p>This series consists of research and collected materials related to the history of the area and of genealogy of various families including three publications compiled by Thomas Murray Faris titled, <i>Faris Line (Faries - Faires – Ferris – Farris): 1698-1966</i> (1966), <i>Coltharp: Coltharpe – Caltharp – Caltharpe) Notes on the Coltharp Family: 1745-1968 or '69</i> (1968), and <i>Coltharp: Descendants of John J. Coltharp and Melinda Cranford Coltharp (The Carolina Branch of The Coltharp Family</i> (1971). There is a lot of correspondence related to genealogical requests of various local family lines which include some (not extensive) genealogical materials. There is also information and on Old Unity Cemetery, Revolutionary graves in York County, York County Historical Sites, Catholic Presbyterian Church, a program for the dedication of the historical marker at the Spratt Home Site on October 29, 1961 which includes a biographical sketch of Thomas “Kanawha” Spratt, and a hand drawn map showing Steele Creek, Hagler’s Branch, Shugaw Creek and Bobby Bridge. A lot of the material in this series was collected in Col. Mack’s role in the Sons of the American Revolution (SAR) and the York County Historical Commission.</p>	1966-1974, nd
10	50	<p>RELIGIOUS</p> <p>This series consists of materials collected by Col. Mack that are religious in nature including correspondence and notes regarding the Presbyterian Church and includes some history on Unity Presbyterian Church.</p>	1923, 1937, 1938, 1965-1968, nd
10	51	<p>POLITICAL</p> <p>This series consists of material that is political in nature and mostly consists of mail solicitations.</p>	1966, nd
11	52	<p>BOOK CLUBS AND READINGS</p> <p>This series consists mostly of correspondence, subscriptions, and solicitations for books, magazines, and journals. Many are marked with Col. Mack’s notes.</p>	1947, 1965-1968, nd

III

DESCRIPTION OF SERIES (cont.)

<u>Box(es)</u>	<u>Folder(s)</u>	<u>Series</u>	<u>Year(s)</u>
11	53	<p>FARM AND EXTENSION</p> <p>This series consists of correspondence related to Col. Mack's membership in the York County Cattlemen's Association and Clemson Cooperative Extension Work in Agriculture and Home Economics. Included is a Certificate of Appreciation awarded to Col. Mack for service to the Clemson University Extension Service dated February 15, 1977.</p>	1959, 1962, 1967-1970, 1977
11	54	<p>PERSONAL</p> <p>This series consist of obituaries for Col. Mack's wife, Elizabeth White Nims Mack (1894-1973), an invitation to the High School graduation of Thomas Benjamin Spratt, III from Dentville High School on June 4, 1970, and a certificate commissioning Col. Mack a Notary Public on January 20, 1972.</p>	1970, 1972, 1973
11	55	<p>DOGS</p> <p>This series consists of correspondence and pamphlets related to Old English Shepherds and Old Time Shepherd Cattle Dog.</p>	1954, 1956, nd
11	56	<p>NOTES</p> <p>This series consists of notes written by Col. Mack. Some of the notes are genealogical nature, for speeches or presentations, or just from phone conversations, etc.</p>	1970, nd
11	57	<p>FORT MILL CHAMBER OF COMMERCE.</p> <p>Consists of correspondence and papers relating to the Agri-Tour and minutes of meetings. In chronological order.</p>	1959-1977, nd
11	58	<p>MISCELLANEOUS PAPERS</p> <p>This series consists mainly of receipts, invoices, and other various papers but also include part of an 1896 publication titled, <i>Pictured Story of the Tornado</i> published by Southern Age, St. Louis, Missouri which is about a tornado that went through St. Louis.</p>	1896, 1927-1928, 1947, nd

III

DESCRIPTION OF SERIES (cont.)

<u>Box(es)</u>	<u>Folder(s)</u>	<u>Series</u>	<u>Year(s)</u>
F) PHOTOGRAPHS			
11	59-60	KOREA AND HAWAII This series consist of photographs while Col. Mack was Military Governor of Taegu, Korea. The photographs are mostly of locals and of local scenes of Taegu and Pusan. There are also several photographs of taken in Hawaii mostly of local scenery, locals, and a few of fellow soldiers.	1947, nd
12	61	MISCELLANEOUS PHOTOGRAPHS Consists of a military photograph of Francis M. Mack Sr., and General Westmoreland with Bob Hope receiving a Sons of the American Revolution Award. No arrangement.	nd
G) NEWSPAPER CLIPPINGS			
12	62	NEWSPAPER CLIPPINGS Consists of miscellaneous clippings from newspapers. No arrangement.	1920, 1922, 1923, 1925, 1927, 1937, 1960-1961, 1965- 1966, 1968-1970, 1972-1975, 1979
H) PAMPHLETS			
12	63	DAUGHTERS OF THE AMERICAN REVOLUTION Consists of South Carolina directories, a year book roster and fall bulletin and a brochure of the 73 rd State Conference. No arrangement.	1964-1971
12	64	SCHOOLS Consists of Washington and Lee Bulletins, proposed 1968 legislative program, and a catalog of standard tests. No arrangement.	1920-1924, 1968
12	65	HISTORICAL Consists of church histories, <i>South Carolina Gazette</i> , <i>Carolina Herald</i> , 1974 Directory and Bi-Centennial Organizations and miscellaneous historical pamphlets.	1968-1973
12	66	MISCELLANEOUS Consists of church related pamphlets, Bailey-grams and miscellaneous pamphlets.	1938-1978, nd

APPENDIX #1
ORGANIZATIONS

County Board of Education

Fort Mill Chamber of Commerce

Masons, Catawba Lodge No. 56

Mayflower Society

Order of the Stars and Bars

Sons of the American Revolution

South Carolina Genealogical Society

Sons of Confederate Veterans (He is a true son as his father was a veteran.)

**This is an inclusive list.*

APPENDIX #2

MAPS

1. Situation map to accompany lesson 1 sub course 40-3 Extension Course of the Infantry School. 1936-1937
2. Situation map to accompany lesson 12-sub course L Command and General Staff Extension Course. 1936-1937
3. Special map A to accompany lesson assignment sheet lesson 2- sub course I command and General staff extension course. 1936-1937
4. Special map No. 6- Army Extension Courses (2 of them) nd
5. Special map No. 8- Army Extension Courses
6. Situation map to accompany lesson 6, sub course 40-2 Extension Course of the Infantry School.
7. Special map No. 10- Army Extension Courses
8. Situation map to accompany lesson 8, sub course 40-2, Extension Course of the Infantry School. (Special map No. 5)
9. Situation map to accompany lesson 1, sub course 40-7, Extension Course of the Infantry School.
10. Situation map to accompany lesson 2, sub course 40-7, Extension Course of the Infantry School.
11. Topographical map. Gettysburg and Antietam.
12. Special map to accompany lesson 5 sub course 40-1, Extension Course of the Infantry School.
13. Special map No. 17
14. Situation map to accompany lesson 2, sub course 40-1, Extension course of the Infantry School.
15. Solution map to accompany lesson 2, sub course 40-1, Extension Course of the Infantry School.
16. Situation map to accompany lesson,1, sub course 40-1, Extension Course of the Infantry School.

APPENDIX #2 (cont.)

MAPS

17. Situation map to accompany lesson 3, sub course 40-1, Extension Course of the Infantry School.
18. Special map No. 8
19. Situation map to accompany lesson 4. Sub course 40-1, Extension Course of the Infantry School.
20. Situation map to accompany lesson 8, sub course 40-1, Extension Course of the Infantry School.
21. Special map to accompany lesson 8, sub course 40-1, Extension Course of the Infantry School.
22. Situation map to accompany lesson 9. sub course 40-1, Extension Course of the Infantry School.
23. Special map No. 20
24. Special map No. 20
25. Solution to Second Requirement lesson 1, sub course 40-3, Extension course of the Infantry School.
26. Solution to First Requirement, lesson 1, sub course 40-3, Extension Course of the Infantry School.
27. Situation map to accompany lesson 5, sub course 40-3, Extension Course of the Infantry School.
28. Special map No. 25
29. Map showing North and South Water Services in Taegu Korea
30. Map showing the roads, railroads and other transportation facilities in Korea Feb. 28, 1945
31. Relief map of Korea
32. Telecommunication map of Korea Feb. 28, 1945
33. Vegetation map of Korea

APPENDIX #2 (cont.)

MAPS

34.	Administrative divisions of Korea	March 3, 1945
35.	Distribution of Electric Power Plants of Korea	Feb. 28, 1945
36.	Slope and Terrain Regions of Korea	
37.	Map of North Carolina and South Carolina	
38.	Peace map of Europe	Jan. 1, 1919
39.	Map with plans for Field Exercise Assembly	
40.	Situation map to accompany exercise, lesson 11- sub course I Command and General Staff Extension Course	1936-1937
41.	Situation map B second situation to accompany lesson 10- sub course I Tactics and Techniques of the separate arms, Command and General Staff Extension Course	1936-1937
42.	Situation map to accompany lesson 9- sub course I command and general staff extension course	1936-1937
43.	Special map to accompany lesson 4, sub course 40-2, Extension Course of the Infantry School.	
44.	Situation map to accompany section II, illustrative problem special text No. 274 Army Extension Courses.	1936-1937
45.	Situation map to accompany lesson 3-sub course I Command and General Staff Extension Course	1936-1937
46.	Situation map to accompany lesson 4- sub course I. Tactics and Techniques of Infantry. Command and General Staff Extension Course	1936-1937
47.	Topographical map Gettysburg-Antietam	
48.	Special map No. 5 Extension Courses	
49.	Topographical map Gettysburg-Antietam	
50.	Fire Control map 2631:5190; / 6126;	

APPENDIX #2 (cont.)

MAPS

51. Topographical map Gettysburg-Antietam
52. Topographical map Gettysburg-Antietam
53. Topographical map Gettysburg-Antietam
54. Topographical map Gettysburg-Antietam
55. Special military map. Harriman Index 2631:7607; / 18
56. Special military map. Harriman Index 2631:7607; / 18
57. Special military map. Harriman Index 2631:7607; / 18
58. Topographical map Gettysburg-Antietam
59. Topographical map Gettysburg-Antietam
60. Topographical map Gettysburg-Antietam
61. Topographical map Gettysburg-Antietam
62. Special military map. Harriman Index 2631:4636; / 4750
63. Situation map B to accompany review lesson, sub course: Problems in Combat intelligence. Army Extension Courses 1940-1941
64. Situation map A to accompany review lesson, sub course: Problems in Combat intelligence. Army Extension Courses 1940-1941
65. Situation map to accompany lesson 6- sub course I. Command and General Staff Extension Course 1936-1937
66. Situation map to accompany section I, lesson 7, sub course I. Command and General Staff Extension Course 1936-1937
67. Situation map to accompany lesson 8- sub course I. Command and General Staff Extension Course 1936-1937
68. Special map A to accompany lesson 10- sub course I. Tactics and Technique of the separate arms. Command and General Staff Extension Course 1936-1937

APPENDIX #2 (cont.)

MAPS

- | | | |
|-----|--|------------|
| 69. | Situation map to accompany lesson 3, sub course 40-7. Extension Course of the Infantry School. | |
| 70. | Situation map to accompany lesson 2, sub course 40-10 Extension Course of the Infantry School. | 1937-1938 |
| 71. | General map of Gettysburg | 1925 |
| 72. | Situation map to accompany lesson 6, sub course 40-3. Extension Course of the Infantry School. | |
| 73. | Situation map to accompany lesson 1, sub course 40-10 Extension Course of the Infantry School. | 1937-1938 |
| 74. | Topographical map of Gettysburg-Antietam | |
| 75. | Topographical map of Gettysburg-Antietam | |
| 76. | Topographical map of Gettysburg-Antietam | |
| 77. | Situation map to accompany lesson 5, sub course I. Command and General Staff Extension Course | 1936-1937. |
| 78. | Situation map to accompany lesson 7, sub course 40-2. Extension Course of the Infantry School. | |
| 79. | Maneuver map. Desoto National Forest Mississippi | |
| 80. | Operation map to accompany lesson 1, sub course 30-3. Extension Course of the Infantry School. | 1938-1939 |
| 81. | Fire Control Map. | |
| 82. | Special military map. Harriman index 2631:7607; / 18 | |
| 83. | Topographical map of Gettysburg-Antietam | |
| 84. | Typee Island | |
| 85. | General map of Gettysburg | 1925 |
| 86. | General map of Gettysburg | 1925 |

APPENDIX #2 (cont.)

MAPS

87. Special map No. 10- Army Extension Courses
88. Special military map 2631:6686:/7619;
89. Clarksville, Tennessee
90. Campbell Military Reservation in Kentucky and surrounding area.

APPENDIX #3

PUBLICATIONS

<u>Name</u>	<u>Box(es)</u>	<u>Folder(s)</u>
Handbook of the National Society of the Sons of the American Revolution 1971	11	54
Handbook of the National Society of the Sons of the American Revolution 1961	11	54
National Charter, Constitution and Bylaws of the Sons of the American Revolution 1967	11	54