



2018

## Nancy Meleski Collection - Accession 1566

Hardy Family

Holly Family

Kineeskern Family

Morgan Family

Follow this and additional works at: [https://digitalcommons.winthrop.edu/  
manuscriptcollection\\_findingaids](https://digitalcommons.winthrop.edu/manuscriptcollection_findingaids)

---

### Finding Aid Citation

Louise Pettus Archives and Special Collections, Winthrop University, "Nancy Meleski Collection - Accession 1566". Finding Aid 1039.  
[https://digitalcommons.winthrop.edu/manuscriptcollection\\_findingaids/1039](https://digitalcommons.winthrop.edu/manuscriptcollection_findingaids/1039)

This Finding Aid is brought to you for free and open access by the Louise Pettus Archives and Special Collections at Digital Commons @ Winthrop University. It has been accepted for inclusion in Manuscript Collection by an authorized administrator of Digital Commons @ Winthrop University. For more information, please contact [bramed@winthrop.edu](mailto:bramed@winthrop.edu).



**WINTHROP UNIVERSITY  
LOUISE PETTUS ARCHIVES & SPECIAL COLLECTIONS**

**MANUSCRIPT COLLECTION**

**ACCESSION 1566**

**NANCY MELESKI COLLECTION**

1821-1932

3 Boxes

**WINTHROP UNIVERSITY  
LOUISE PETTUS ARCHIVES & SPECIAL COLLECTIONS**

**MANUSCRIPT COLLECTION**

ACC. NO.: 1566  
ADDITIONS: \_\_\_\_\_, \_\_\_\_\_, \_\_\_\_\_

PROCESSED BY: Morgan Rodgers  
DATE: October 5, 2016  
NO. OF SECTIONS: 3

**NANCY MELESKI COLLECTION**

**I**

The Nancy Meleski Collection was donated to the Winthrop University Archives and Special Collections on May 17, 2016.

Linear feet of shelf space occupied: 1.5 Linear feet  
Approximate number of pieces: 9 Bd. Vol. & 52 pieces

Restrictions: Open to researchers under the rules and regulations of the Louise Pettus Archives & Special Collections at Winthrop University.

Literary Rights: For information concerning literary rights please contact the Louise Pettus Archives & Special Collections at Winthrop University.

Scope and Content Note: **The collection contains a family bible with names of people who got married, were born, and died, a family dictionary that contains names of people and towns, and a collection of sheet music for vocals, violin, and piano. Names and places listed in the family bible are: Moses F. Hardy, Amanda Kineeskern, Seward Valley, New York, Stephen P. Brewster, Julia Holly, Amanda Hardy, William Eben Hardy, Parley Elmer Hardy, Katharine Melinda Brewster, and Rhoby Jennings. People and places listed in the family dictionary are: Volney, New York, Schroepfel, New York, Chauncy Morgan, Palermo Morgan, Albert Morgan, Richard Holly, and Marie Holly Woods.**

Related Collection:

II

DESCRIPTION OF SERIES

<u>Box(es)</u>	<u>Folder(s)</u>	<u>Series</u>	<u>Year(s)</u>
1	--	<p><b>HARDY FAMILY BIBLE</b> Includes the Hardy family Bible titled, <i>The Holy Bible: Containing The Old And New Testaments, With Marginal References And Readings; An Introduction To The Right Understanding Of The Scriptures; The Concise Dictionary Of the Bible Explaining Every Important Word; The Psalms In Metre With Explanatory Notes, And Memoirs Of Rev. John Brown And Of rev. Drs. Cooke And Porter, With Much Tabular And Instructive Matter, Together With Critical And Explanatory Notes And Practical Reflections, By Rev. John Brown.</i> Illustrated With Steel Plates, And Maps In Colors. Philadelphia: John E. Potter And Company, 1873. The Bible includes family records of marriages, births, and deaths dating from 1821-1922. In the back of the bible is a section of 16 mostly unidentified photographs (one image is labeled Rhoby Jennings), with tin types and cartes de viste. The cartes de vistes were printed by studios in Utica, NY, Cobleskill, NY, and Rockford, IL. * See Appendix II for copies of Genealogical entries and Photograph entries.</p>	1873
1	--	<p><b>FAMILY DICTIONARY</b> The family dictionary consists of <i>Walkers Critical Pronouncing Dictionary and Expositor of The English Language. Abridged By The Rev. Thomas Smith, London. To Which Is Added, A Chronological Table, Containing The Principal Events of the Late War Between The United States and Great Britain.</i> Cooperstown: Stereotyped and Printed by H &amp; E. Phinney, 1828. The dictionary contains genealogical entries dating from 1837 through 1930 includes names of people and names of towns written on the covers and pages of the book. The families names listed have the surnames, Holly, Woods, and Morgan and the location seems to be mostly from Oswego County, New York. Also written in the book are calculations for the ages people were when they died.</p>	1828
2-3	--	<p><b>SHEET MUSIC</b> Includes various sheet music for vocals, the violin, and the piano. * See Appendix I</p>	1882-1932

**APPENDIX I**

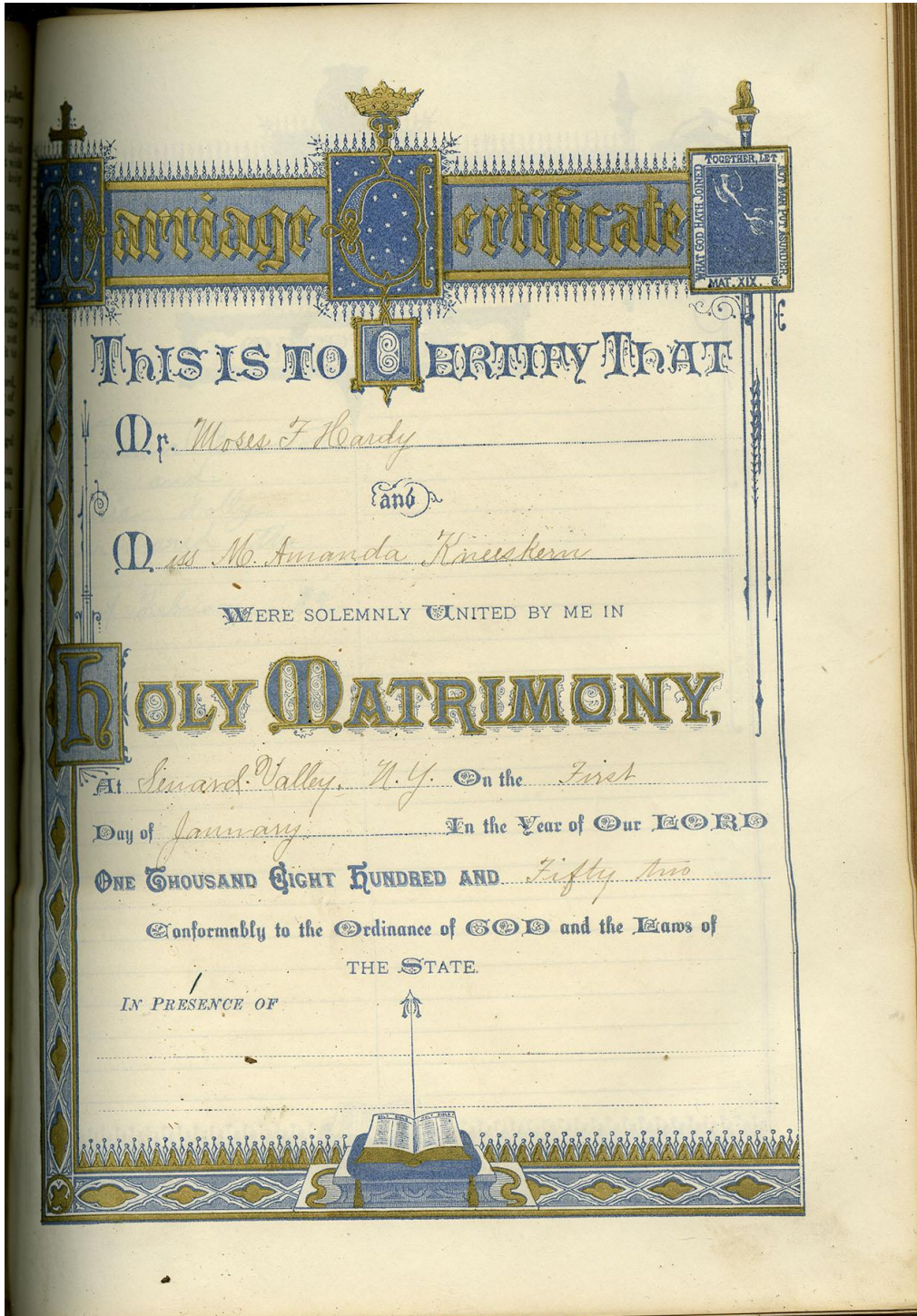
**LIST OF SHEET MUSIC**

<b><u>Box</u></b>	<b><u>Title</u></b>	<b><u>Year</u></b>
2	World's Greatest Music Brahms Symphony No. 2 in D Major	nd
2	Home Recreation (Cornet)	nd
2	Home Recreation (Piano)	nd
2	Thirty Standard and Popular Operas Arranged for Violin and Piano by A. S. Bowman	1893
3	30 Popular Operas Especially Arranged for Violin and Piano	nd
3	Was die Wanderoogel Singen	1919
3	Excelsior Method and Progressive School for the Violin edited and compiled by A. S. Bowman	1882
3	Twelve Poetic Album Leaves by Gustav Faenger	1911
3	Cornet Solars LNB	nd
3	Vol. 892 Grieg Op. 7 Sonata for Pianoforte (Gallico)	1908
3	Vol. 200 Grieg Op. 19 Aus Dem Volksleben (Sketches of Norwegian Life) Humoresken for Piano	1908
3	Because Song words by Edward Teschemacher music by Guy d'Hardelot	1902

APPENDIX II

FAMILY BIBLE GENEALOGICAL ENTRIES AND PHOTOGRAPH ENTRIES

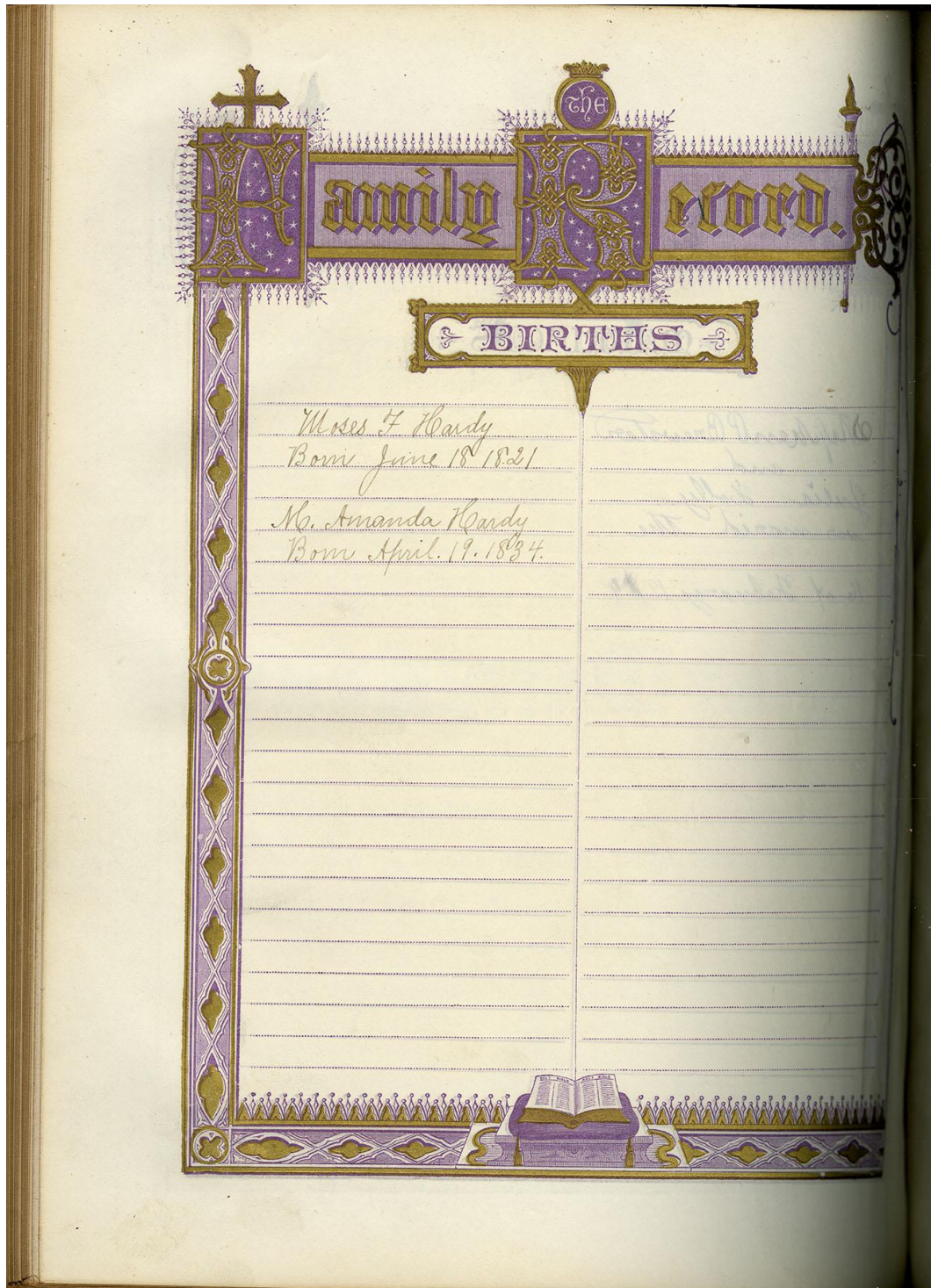
Family History Entry 01



APPENDIX II (cont.)

FAMILY BIBLE GENEALOGICAL ENTRIES AND PHOTOGRAPH ENTRIES

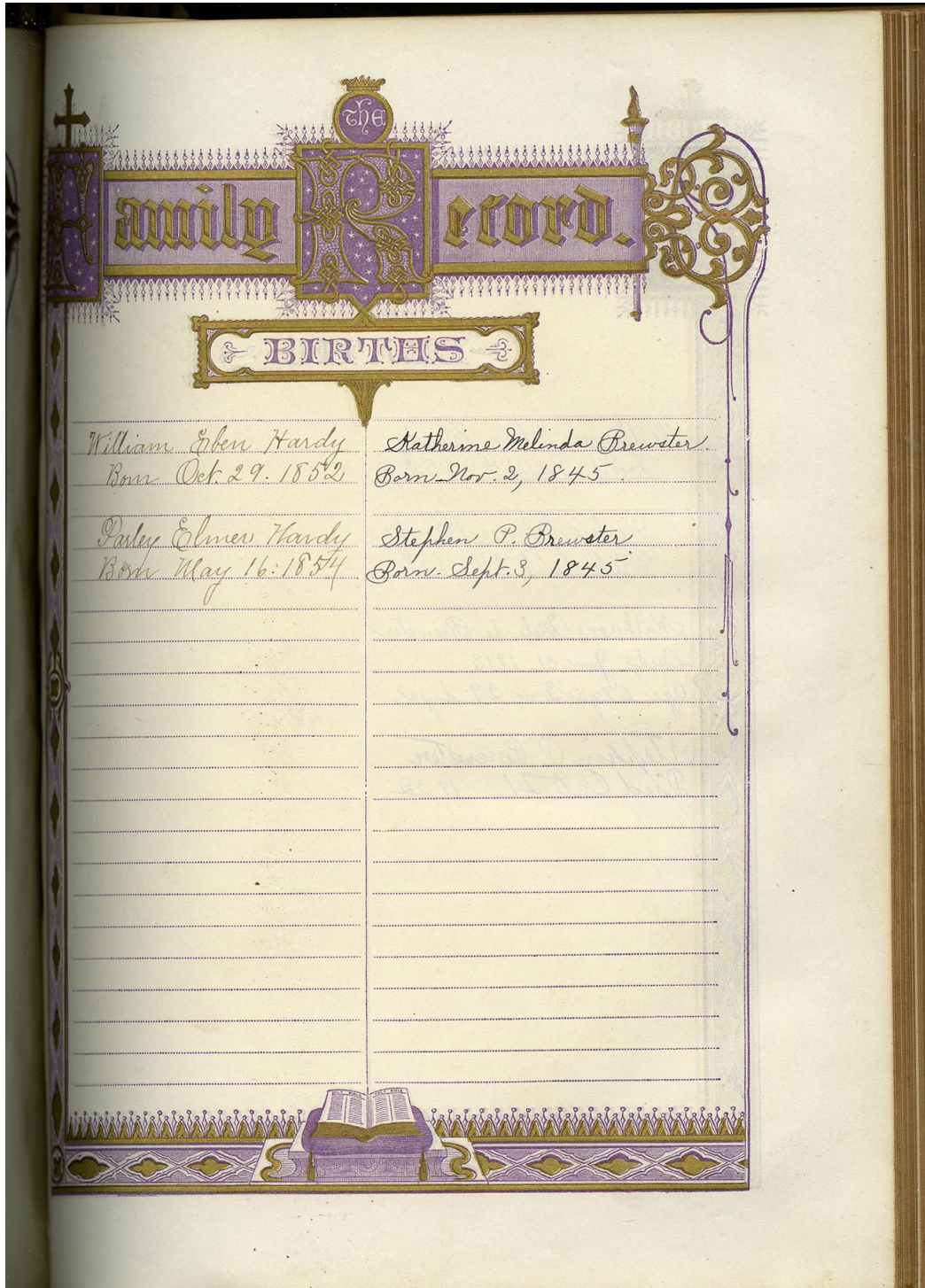
Family History Entry 02



APPENDIX II (cont.)

FAMILY BIBLE GENEALOGICAL ENTRIES AND PHOTOGRAPH ENTRIES

Family History Entry 03

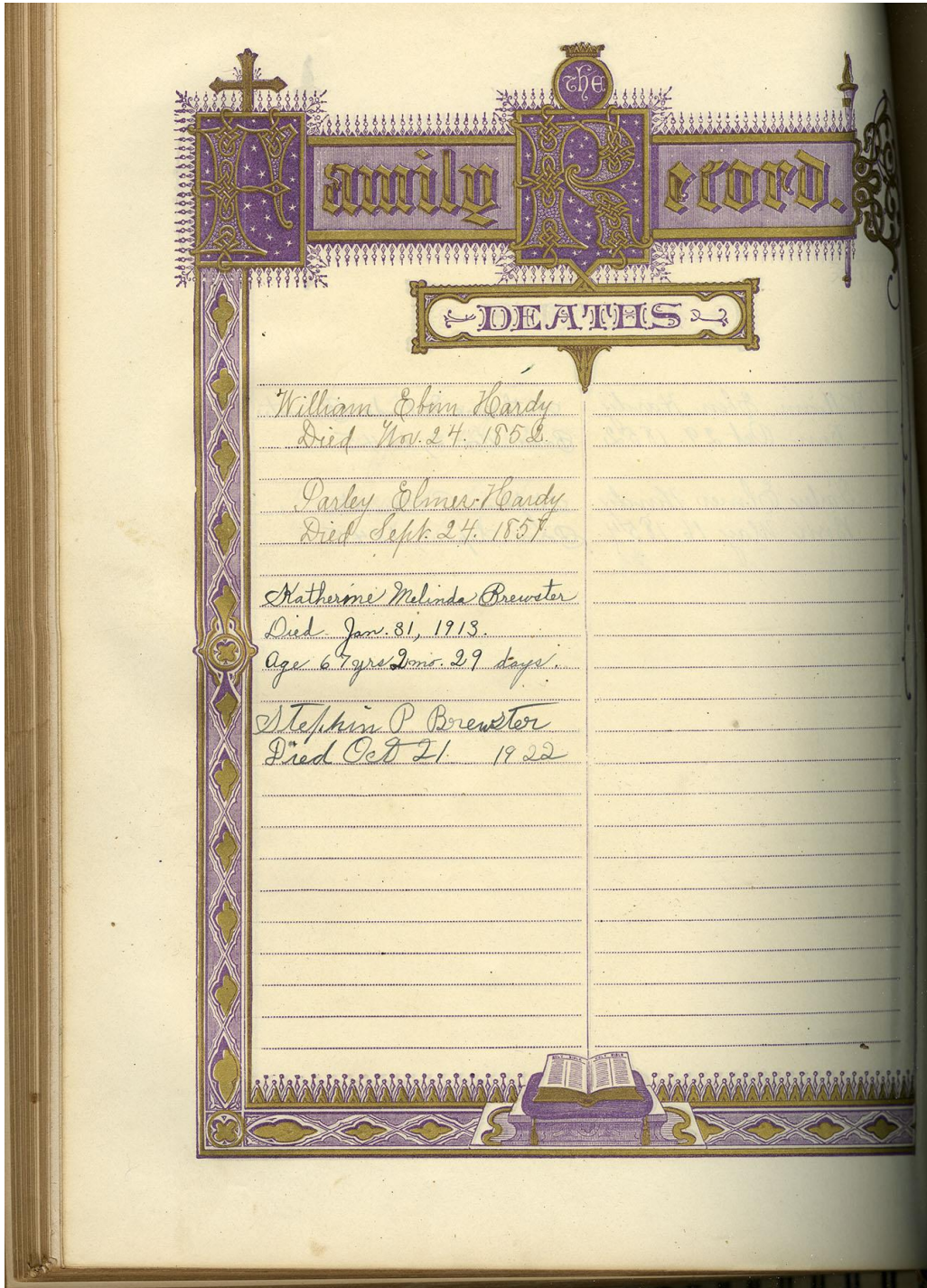




APPENDIX II (cont.)

FAMILY BIBLE GENEALOGICAL ENTRIES AND PHOTOGRAPH ENTRIES

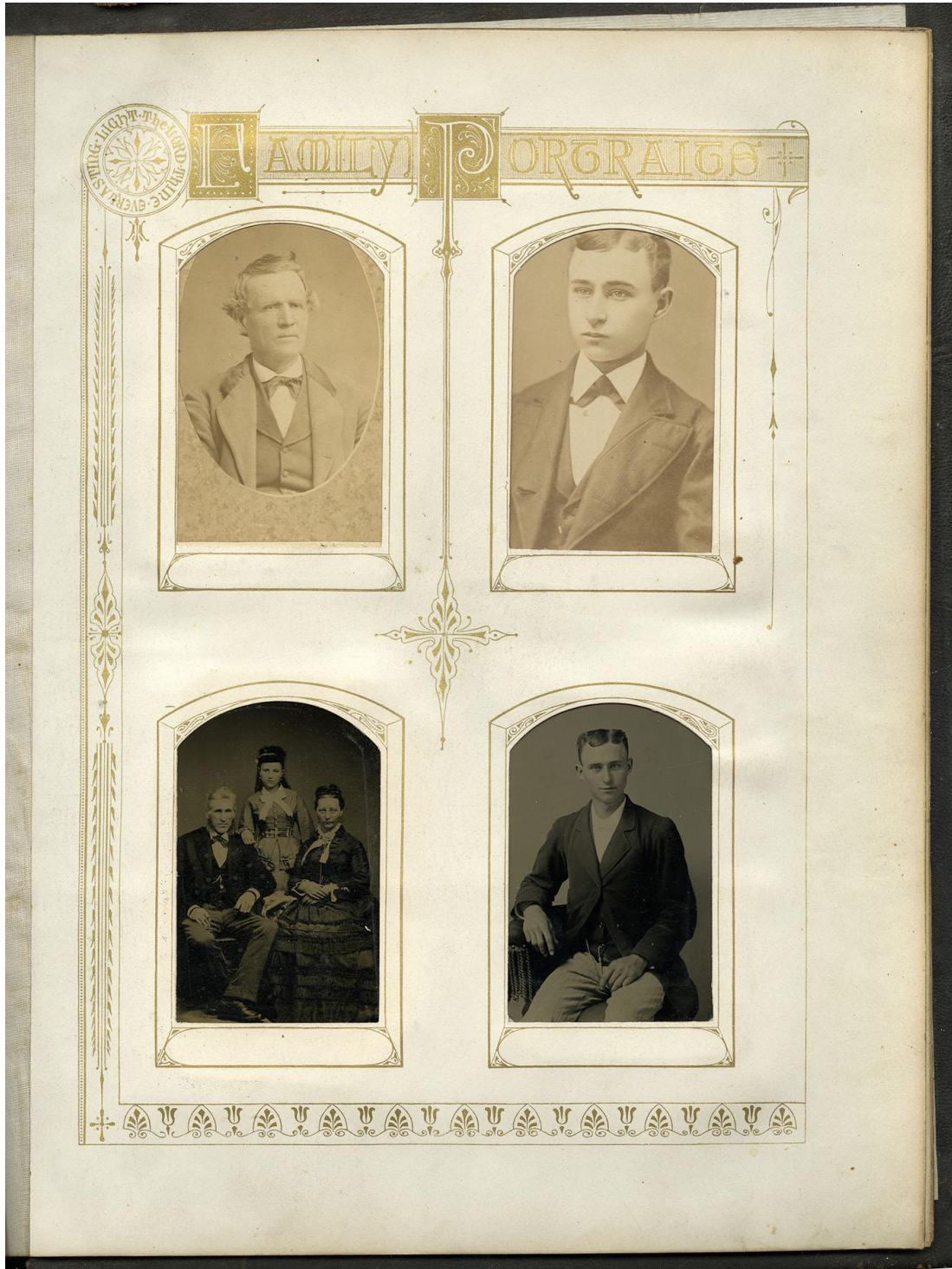
Family History Entry 04



APPENDIX II (cont.)

FAMILY BIBLE GENEALOGICAL ENTRIES AND PHOTOGRAPH ENTRIES

Family Photograph Entry 01



APPENDIX II (cont.)

FAMILY BIBLE GENEALOGICAL ENTRIES AND PHOTOGRAPH ENTRIES

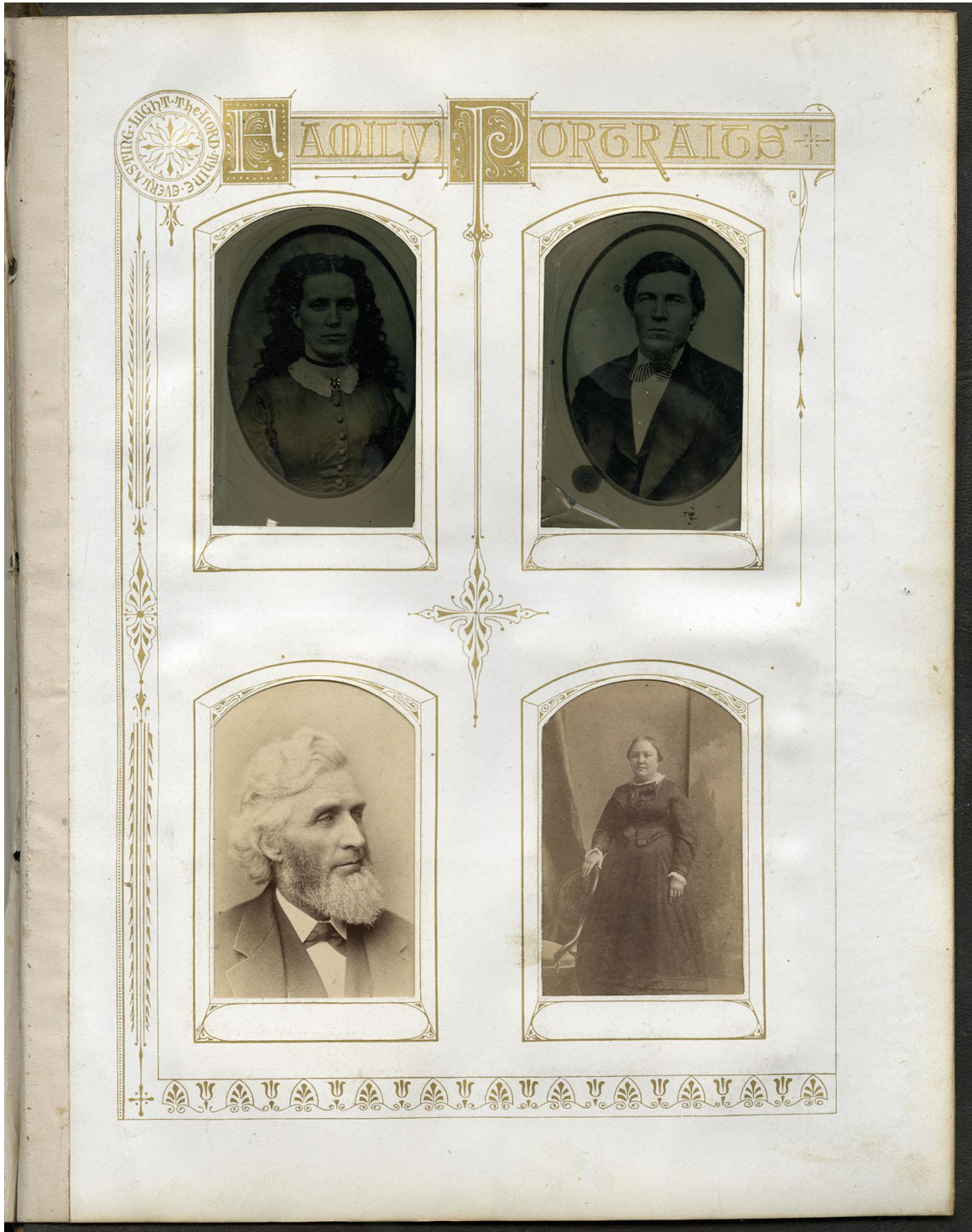
Family Photograph Entry 02



APPENDIX II (cont.)

FAMILY BIBLE GENEALOGICAL ENTRIES AND PHOTOGRAPH ENTRIES

Family Photograph Entry 03



APPENDIX II (cont.)

FAMILY BIBLE GENEALOGICAL ENTRIES AND PHOTOGRAPH ENTRIES

Family Photograph Entry 04

