

Governors State University

OPUS Open Portal to University Scholarship

All Capstone Projects

Student Capstone Projects

Fall 2016

GSU Event Portal

Nandamuri Tirumala B
Governors State University

Raviteja Vadlamudi
Governors State University

Follow this and additional works at: <http://opus.govst.edu/capstones>

 Part of the [Computer Sciences Commons](#)

Recommended Citation

Tirumala B, Nandamuri and Vadlamudi, Raviteja, "GSU Event Portal" (2016). *All Capstone Projects*. 270.
<http://opus.govst.edu/capstones/270>

For more information about the academic degree, extended learning, and certificate programs of Governors State University, go to
http://www.govst.edu/Academics/Degree_Programs_and_Certifications/

Visit the [Governors State Computer Science Department](#)

This Project Summary is brought to you for free and open access by the Student Capstone Projects at OPUS Open Portal to University Scholarship. It has been accepted for inclusion in All Capstone Projects by an authorized administrator of OPUS Open Portal to University Scholarship. For more information, please contact opus@govst.edu.

ABSTRACT

Creating an event landing page or website is a very important step in your event marketing tactic as it acts as a hub for all things associated to your event. Because this is the best way to reach maximum number of people. With the help of social media nowadays there is huge impact of web portals in the market. For an any event, there is need to create an awareness among the people that particular event is going to happen. With this portal we can reach people very easily make them know what is the event all about and who can participate and a lot more information can be shared among them. This is not completely a new application, there are lot more event portals, this is just an alternative to the existing model/service.

This is a Web Based system, the basic idea behind designing this application is that the user can plan and create the event according to his requirement, needs and budget. System very efficiently store, access and maintain data from database and can be used for further analysis. This project is a user interactive web application. The system will help the user to create an event. Our Event Management System is especially design to reduce the communication gap between event organizer and clients. Easy to manage historical data in database. User can select the theme for their event virtually on his computer. Participants can register for any happening event from anywhere. Event Organizer can keep records of participants.

This project provides a platform to promote events by event organizers where customers can find nearby events using customer's current location. It allows any user to create any event with the parameters are category, event type, date and price with landmarks. This project primarily focusing on creating and promoting an event for the event organizers. It helps users to find specific event based on category with the details of travel distance and price. It provides refine search facility to users to search This application featuring services

are location identifiers with the help of longitude and latitude points, it provides social bar for each and every event to share with the friends and also supporting saving an event feature. for an event using location, category, date and price and also displays relevant events to the users.

Modules:

Admin

Admin have all the access, he can add, update, delete any information in the system. He can add new event, event manager, Volunteer as well as update them. Admin also have the user credentials to enter into the system. He can able to see all the participants who are registered for an Event. Admin can read all the feedback given by visitors about events.

User

In this system users are event visitors and event creators. User have to register for event creation or event visit. Can easily check event details times and can contact event organizer easily. Participants can register online and able to get notification about event timing, place or any updates. User can give the feedback about the Event. He can search the events by location, date, event type, Free or paid.

Organizer

Organizer also has Credentials to login into his panel. He maintains the total no of visitors who are registered for a particular Event. He is responsible for all needs of an Event.

Table of Content

| | |
|--|----|
| 1. Project Description..... | 1 |
| 1.1 Competitive Information..... | 1 |
| 1.2 Relationship to Other Applications..... | 1 |
| 1.3 Definitions and Acronyms..... | 1 |
| 1.4 Future Enhancements..... | 2 |
| 2. Technical Description..... | 2 |
| 2.1 Application Information flows..... | 4 |
| 2.2 Interactions with other Projects..... | 4 |
| 2.3 Capabilities..... | 4 |
| 2.4 Risk Assessment and Management..... | 5 |
| 3. Project Requirements..... | 6 |
| 3.1 Software Requirements..... | 6 |
| 3.2 Hardware Requirements..... | 6 |
| 3.3 Security and Fraud Prevention | 6 |
| 4. Project Design Description | 7 |
| 4.1 Use Case Diagram..... | 7 |
| 4.2 Flow Chart..... | 8 |
| 4.3 Activity Diagram..... | 8 |
| 4.4 Sequence Diagram for Organizer | 9 |
| 4.5 Sequence Diagram for User..... | 10 |
| 5. Project Internal/ External Interface Impacts and Specification..... | 11 |
| 5.1 E-R Diagram..... | 11 |
| 5.2 Database Diagram..... | 12 |
| 6. Open Issues..... | 13 |
| 7. Acknowledge..... | 14 |
| 8. References | 15 |

1. Project Description:

Everybody wants their special day to be perfect in every way. Whether it's a surprise celebration, wedding reception, a corporate meeting or a launch of a new product or company, Special Event Planning and Decor can make it seamless, memorable and exceptional.

1. Wedding planning
1. Reception
2. Party decor
3. Engagement
4. Birthday Parties

The project will help Clients to decorate and manage their event and the best cost required for particular decoration, this project saves the time effort, paper work.

1.1 Competitive Information:

In present marketing filed Eventbrite, amiendo and Event Elephant are the competitors for Gsu Event Portal. For further we need to develop the portal as much equal to those portals.

1.2 Relationship to Other Applications:

The Project GSU Event Portal is similar to A Perfect Event, Clever Event Production, Eventbrite, Event Professionals website. These websites are huge project and these are very familiar to create event and manage events at any location. We took these website as a reference to develop GSU Event portal.

1.3 Definitions and Acronyms:

| Term | Definition |
|----------|-----------------------------|
| HTML | HyperText Markup Language |
| ASP. NET | Active Server Pages |
| CLR | Common Language Runtime |
| DBMS | Data Base Management System |

1.4 Future Enhancement:

We are looking forward to develop some extra features in Gsu Event Portal, which are group online chatting who are members in Gsu Event Portal. We provide event location pictures along with events, and short length video clipping on event place. If it is possible we are looking further to develop mobile device app.

2. Technical Description:

This is a Web Based system, the basic idea behind designing this application is that the user can plan and create the event according to his requirement, needs and budget. System very efficiently store, access and maintain data from database and can be used for further analysis. This project is a user interactive web application. The system will help the user to create an event. Our Event Management System is especially design to reduce the communication gap between event organizer and clients. Easy to manage historical data in database. User can select the theme for their event virtually on his computer. Participants can register for any happening event from anywhere. Event Organizer can keep records of participants.

This project provides a platform to promote events by event organizers where customers can find nearby events using customer's current location. It allows any user to create any event with the parameters are category, event type, date and price with landmarks. This project primarily focusing on creating and promoting an event for the event organizers. It helps users to find specific event based on category with the details of travel distance and price. It provides refine search facility to users to search This application featuring services are location identifiers with the help of longitude and latitude points, it provides social bar for each and every event to share with the friends and also supporting saving an event feature. for an event using location, category, date and price and also displays relevant events to the users. For developing this website, we are developed the Gsu Event Portal with the help of HTML, ASP. NET and Data Base.

ASP.NET:

It is an integrated development environment (IDE) from Microsoft. It is used to develop computer programs for Microsoft Windows, as well as web sites, web

applications and web services. Visual Studio uses Microsoft software development platforms such as Windows API, Windows Forms, Windows Presentation Foundation, Store and Microsoft Silverlight. It can produce both native code and managed code.

Visual Studio includes a code editor supporting IntelliSense as well as code refactoring. The integrated debugger works both as a source-level debugger and a machine-level debugger. Other built-in tools include a forms designer for building GUI applications, web designer, class designer, and database schema designer. It accepts plug-ins that enhance the functionality at almost every level—including adding support for source-control systems and adding new toolsets like editors and visual designers for domain-specific languages or toolsets for other aspects of the software. Visual Studio supports different programming languages and allows the code editor and debugger to support to varying degrees nearly any programming language, provided a language-specific service exists.

DATA BASE:

Microsoft SQL Server is a relational database management system developed by Microsoft. As a database, it is a software product whose primary function is to store and retrieve data as requested by other software applications, be it those on the same computer or those running on another computer across a network including the Internet. There are at least a dozen different editions of Microsoft SQL Server aimed at different audiences and for workloads ranging from small single-machine applications to large Internet-facing applications with many concurrent users.

2.1 Application Information flows:

Use Case Diagram:



Description: the above figure of use case diagram shows the modules and users interacting with the defined modules.

2.2 Interactions with other Projects: To develop for this we are based on the event management portals.

2.3 Capabilities:

- Creating an Event.
- If any case, we can cancel the event with intimation to event registered people.
- Changing the event location, date, price and number tickets.
- Scheduling concurrent events in timely manner.
- Conducting virtual events.

- Confirming the event locations, time, date of the events.
- Online group discussions.

2.4 Risk Assessment and Management:

- Before risk management begins it is imperative that a foundation is established for providing structured project information, thus, the following project elements were completed and defined prior to developing this Risk Management Plan:
 - Define work scope, schedule, resources, and cost elements.
 - Develop project WBS/WBS dictionary.
 - Develop master schedule and detailed schedules.
 - Estimate project cost and finalize budget.
 - Identify required and available resources.
 - Establish performance measurement metrics.
 - Define minimum and maximum baseline thresholds.
 - Schedule
 - Resources
 - Cost
 - Baseline reporting requirements.
 - Format
 - Frequency of distribution
 - Distribution list
 - Define Risk Management Roles and Responsibilities.
 - Project Manager chairs the risk assessment meetings.

Project team participates in risk assessment meetings and members serve as meeting recorder and timekeeper Key stakeholders participate in risk assessment meetings Project Sponsor may participate in risk assessment meetings.

3. Project Requirements:

For developing Gsu Event Portal we are used some mandatory software and hardware specifications. If anybody want to use this project in their own device, they should follow the minimum below requirements which are.

3.1 Software Requirements:

- Front End : Visual Studio .NET 2013 Professional.
- Back End : SQL Server 2012 Developer Edition.
- Operating Systems : Windows 8.1
- Frame Work : .NET 4.5

3.2 Hardware Requirements:

- Processor : Intel Core i3
- RAM : 4GB
- Hard Disk : 1TB

3.3 Security and Fraud Prevention:

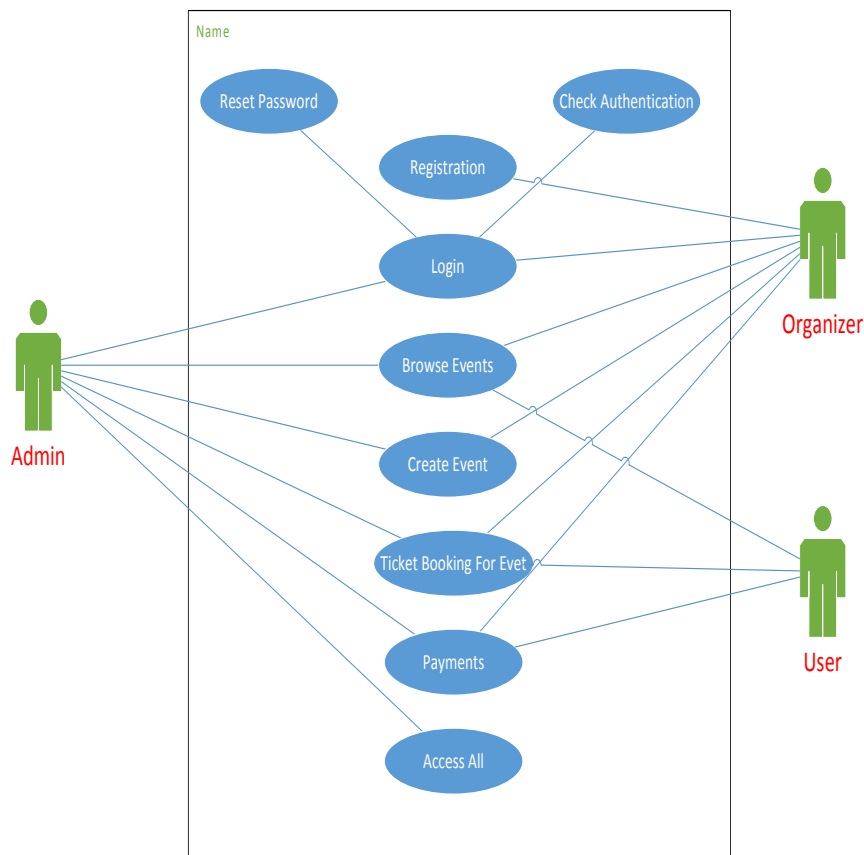
Security is the prevention of unidentified access to the data base. All the organizers whether a Member or an Administrator has to authenticate themselves by providing their USER ID and their personal Secure Password before logging onto their website. The total database maintained by Administrator. The administrator has all rights to modify the data in the database. He has the rights to add or remove and create an Event, Session or event details from the database.

4. Project Design Description:

The Gsu Event Portal project is an implementation of a general website. Event websites like Eventbrite, Event Elephant, and A Perfect Event which helps the customers to search the availability and prices of various events, along with the different prices available with the location. This project also covers various features like online registration of the users, modifying the details of the website by the management staff or administrator of the website, by adding, deleting or modifying the customer details, events or location information. In general, this website would be designed to perform like any other event management websites available online.

4.1

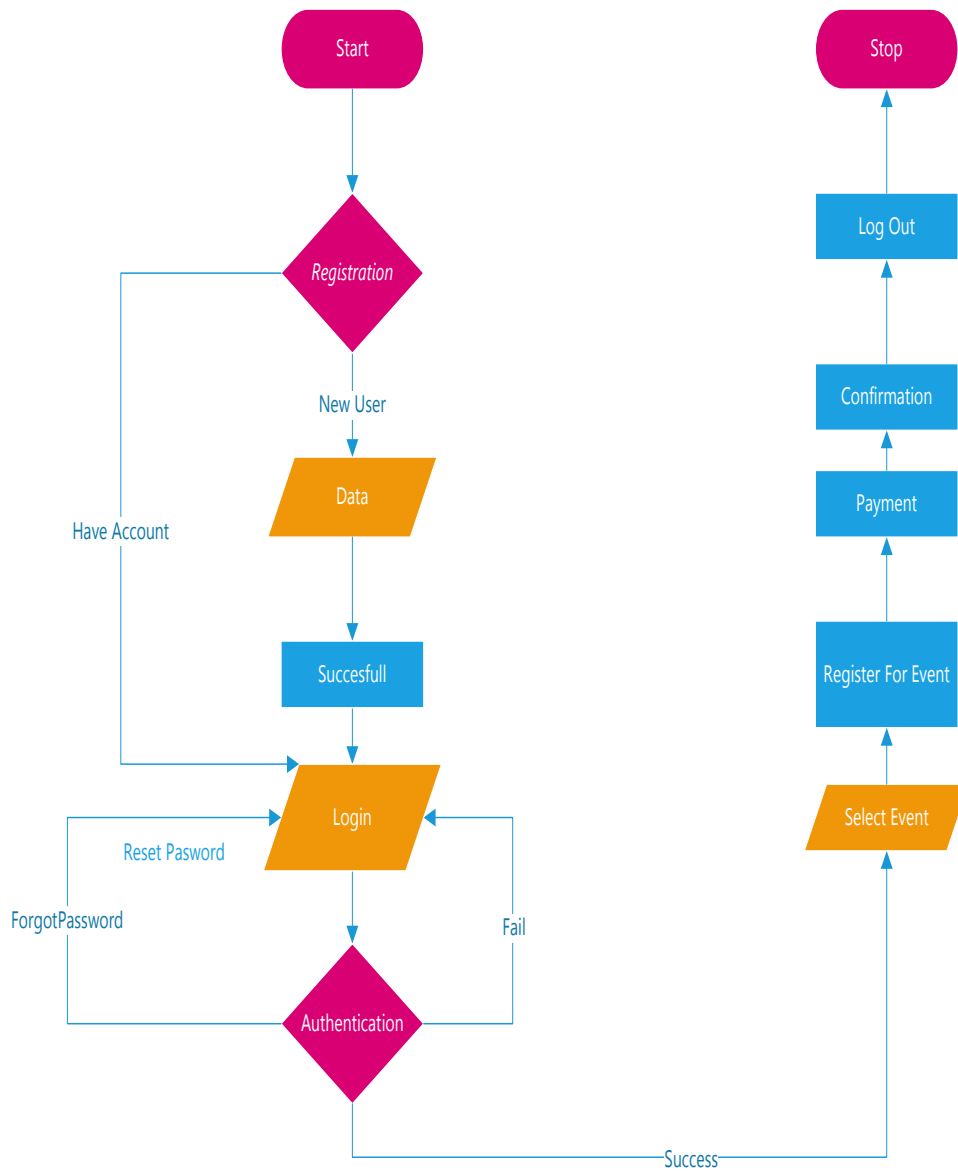
Use Case Diagram:



As shown in above diagram there is Admin, Organizer and User. Administrator have already all access for Gsu Event Portal website. Who have an account in this website they are become an organizer to create an events in Gsu Event web portal. User don't need to register into website. If they want to register for event they can easily access the website without any login credentials, they just need to fill out their personal information when they decided to go events. By putting their personal information, they will get event confirmation and tickets to their mail who ever give the mail when event registration time.

4.2

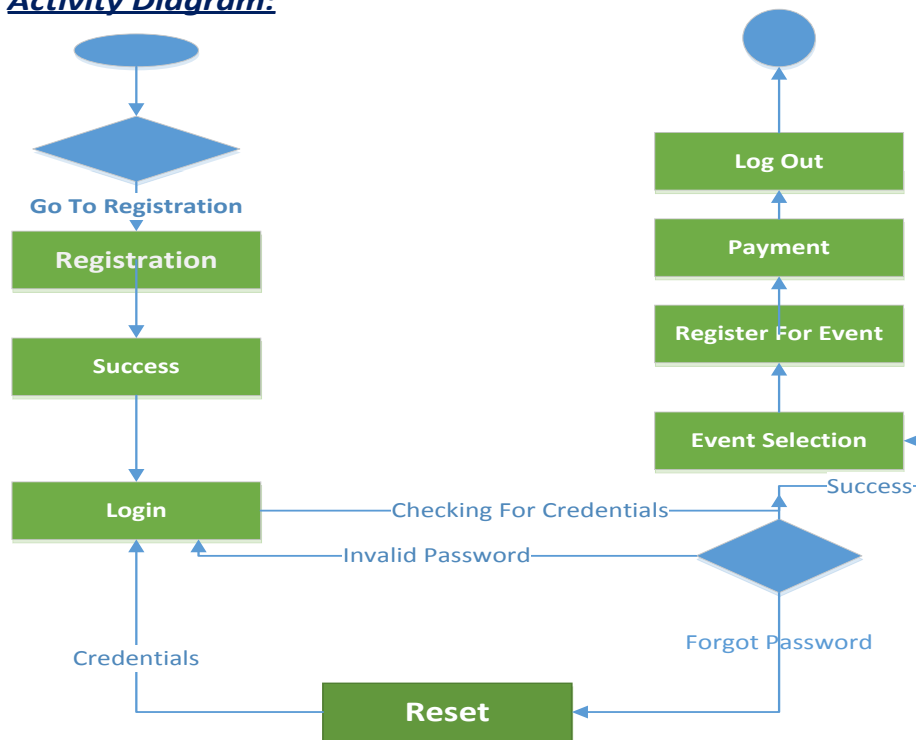
Flow Chat:



The above diagram shows the process of registration for organizers and users.

4.3

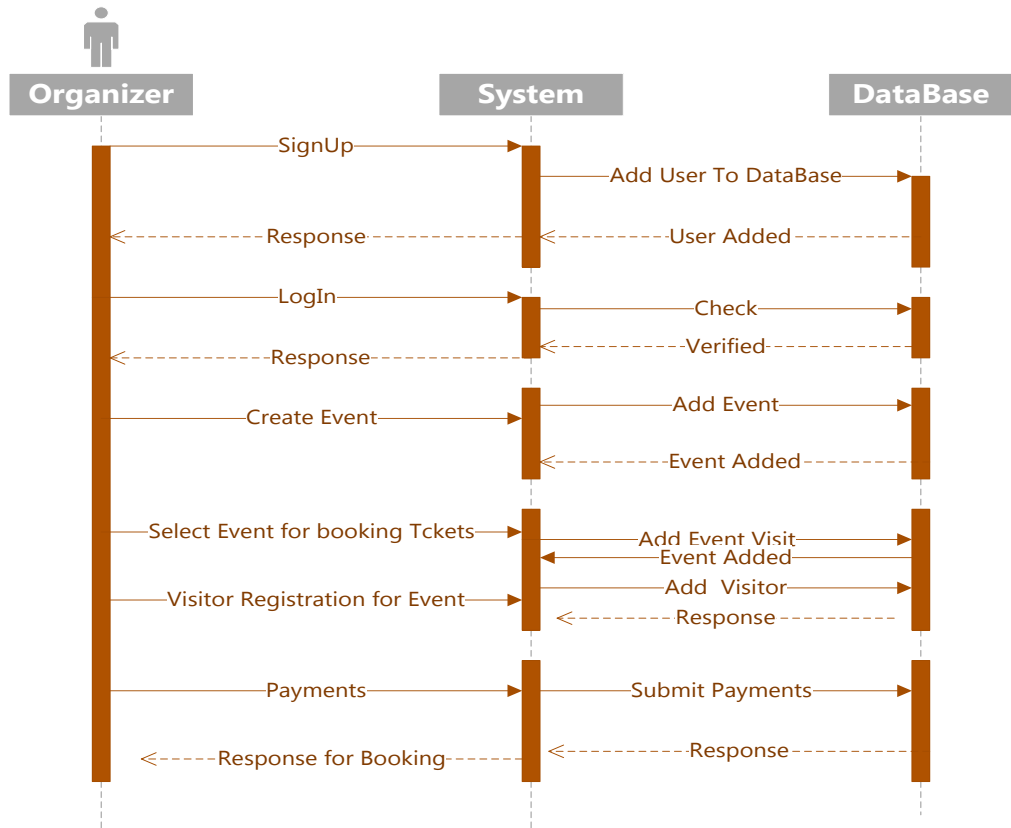
Activity Diagram:



Above diagram indicates the activity diagram for Gsu Event Portal

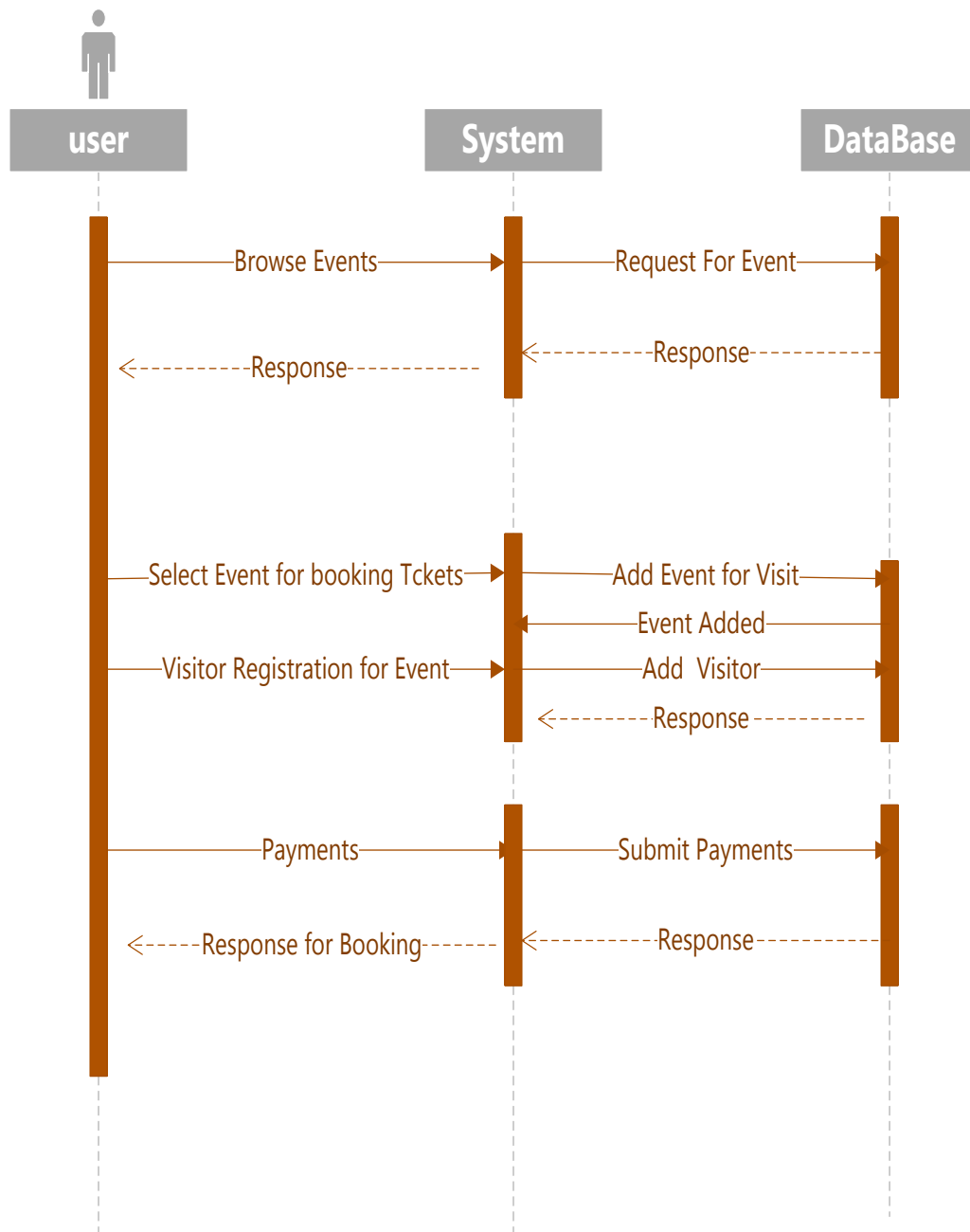
4.4

Sequence Diagram For Organizer:



4.5

Sequence Diagram For User:

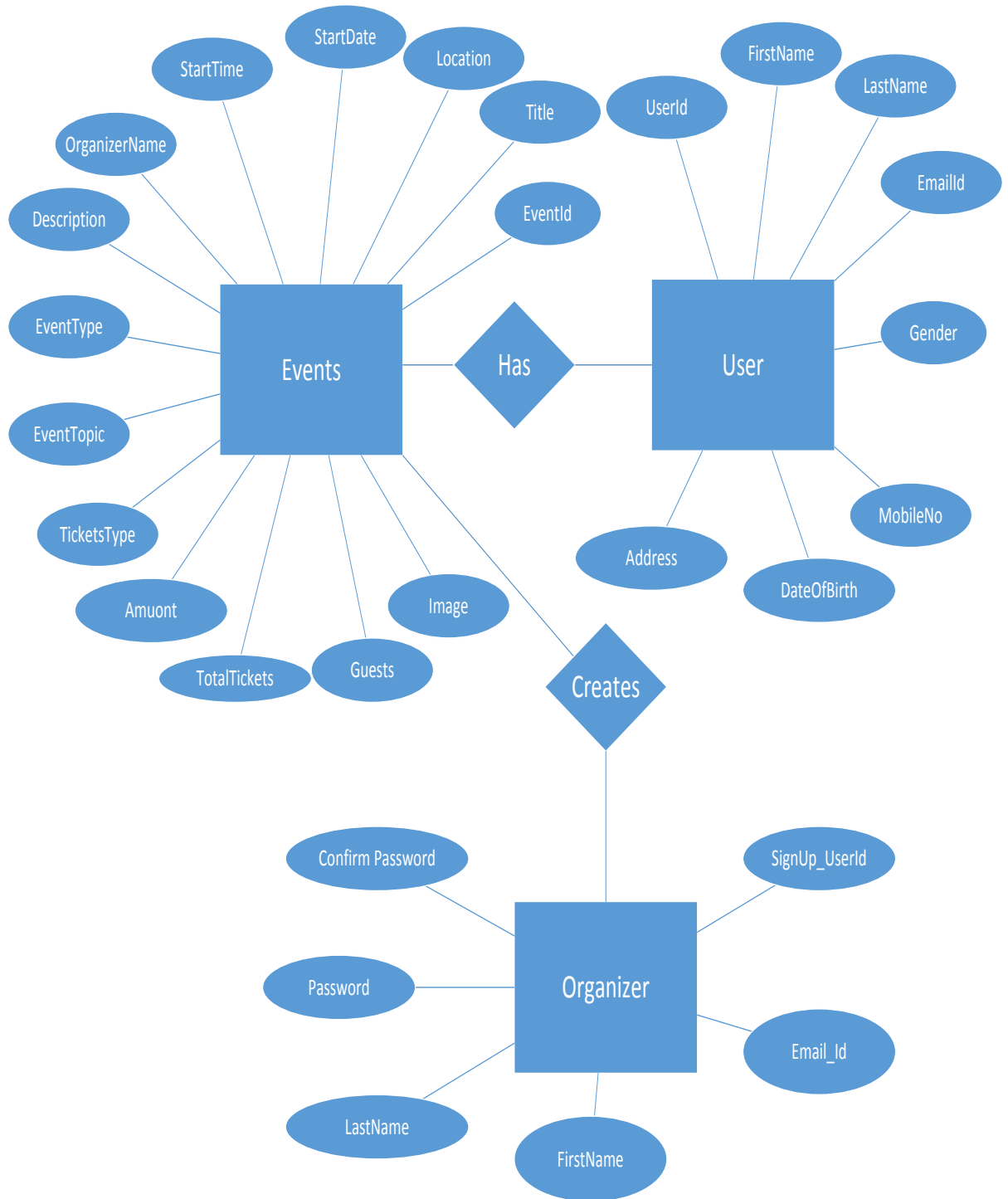


Above all diagrams are the functionalities of Gsu Event Portal website. In all diagrams shows the activity diagram, flow chart, sequence diagram for the organizers and sequence for the users. The websites all other diagrams use case diagram may contain nodes constraints. Use case diagram may also contain packages, which are used to group element of your model into large chunks. Occasionally, you will want to place instances of use case in your diagram, as well, especially when you want to visualize a specific executing system.

5. Project Internal/External Interfaces Impacts and Specifications:

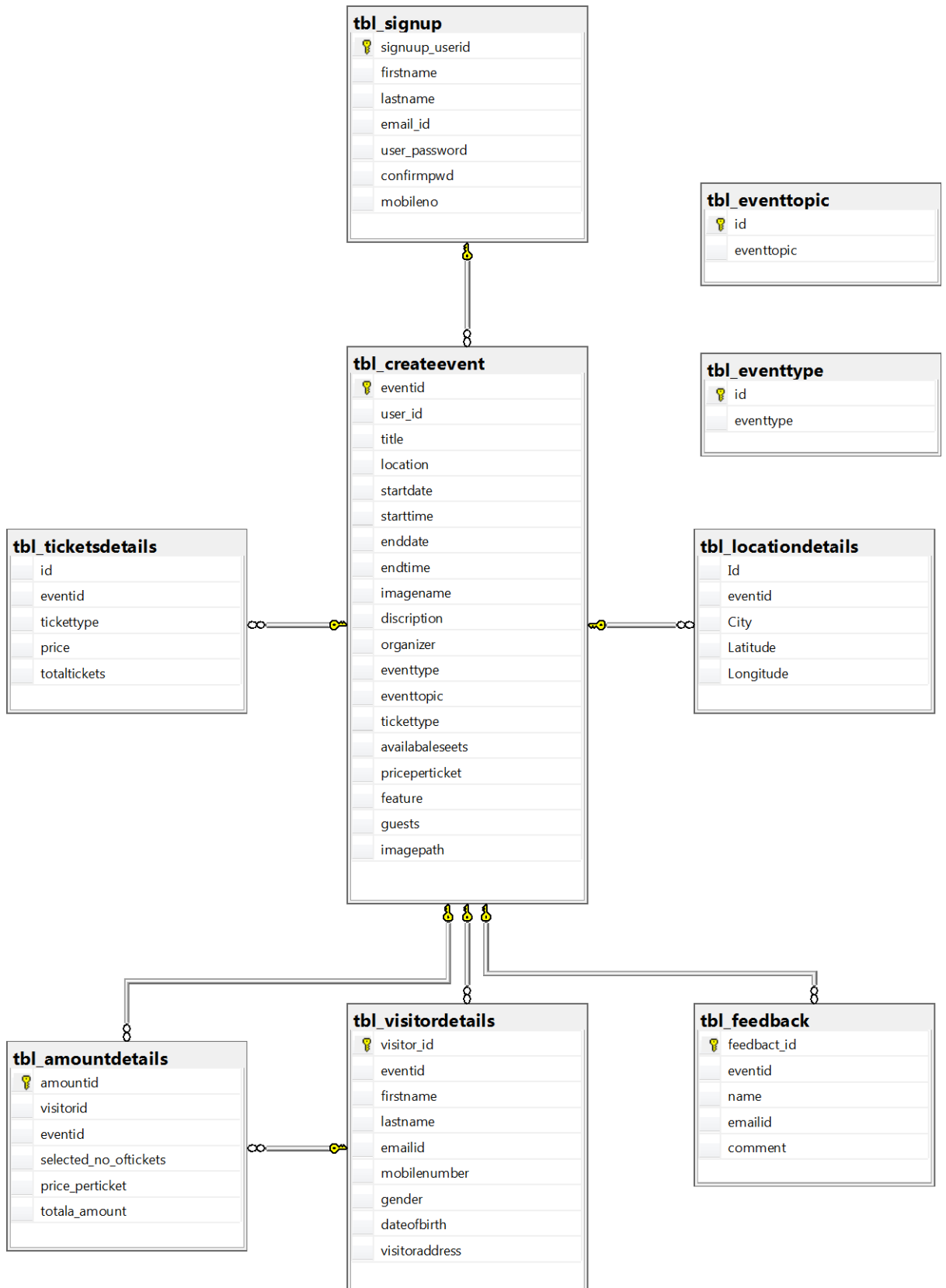
5.1

ER-Diagram:



Above diagram is Gsu Event Portal External Diagram

5.2 Data Base Diagram:



6. Open Issues:

Gsu Even Portal having some open issues which are, we didn't provide the google navigation we just created google key maps. To develop for Gsu Event Portal we are based on the Eventbrite, Event Elephant and etc., Those all websites are very efficient and perfect. While coming to Gsu Event Portal we need to initiate PayPal payment gateway method, accurate google maps and in future we are looking to provide small visualization video on event location.

7. Acknowledgements:

I express my sincere thanks to my project guide of Prof. **“Dr. Do Young Park PhD”**. Coordinator at Governors State University college for Computer Science Department has been guiding force to me project Report on **“Gsu Event Website”**.

I am also thankful to my all professors to their support and encouragement in finding out the data for this Project report, without their support and effort, making this project have been impossible for me.

I would also thank the whole respondent who provide me the best knowledge and for their help and cooperation throughout the project.

8. References:

www.eventbrite.com

<http://www.javatpoint.com/>

<http://www.javatpoint.com/sql-create-database>

<http://www.w3schools.com/>

<http://www.gotdotnet.com/>

<http://csharp.net-tutorials.com/>