

3-2013

LandMarks, Spring 2013

Geoffrey Bates
Governors State University

Follow this and additional works at: http://opus.govst.edu/nmsp_landmarks

Recommended Citation

Bates, Geoffrey, "LandMarks, Spring 2013" (2013). *LandMarks*. Book 9.
http://opus.govst.edu/nmsp_landmarks/9

This Book is brought to you for free and open access by the Nathan Manilow Sculpture Park at OPUS Open Portal to University Scholarship. It has been accepted for inclusion in LandMarks by an authorized administrator of OPUS Open Portal to University Scholarship. For more information, please contact opus@govst.edu.

LandMarks

DIGITAL
Newsletter Spring 2013 Issue



Governors State
UNIVERSITY

NATHAN MANILOW 35
SCULPTURE PARK YEARS



Nathan Manilow Sculpture Park Receives two etchings by Martin Puryear

Shirley Weese Young, widow of longtime gallery owner Donald Young, recently donated two etchings by Martin Puryear to Governors State University's Nathan Manilow Sculpture Park (NMSP). The works, dating from 2002 and 2005, are based upon a small bronze throne, one of several sculptural elements which make up the artist's seminal landscape-based artwork, **Bodark Arc**, part of the NMSP's permanent collection.

Ms. Young chose to donate the works because, in her words, "They seemed to belong with the work that Martin created so long ago."

"We are pleased that Shirley Weese Young has honored the park with custody of these two important graphic works by one of America's most respected sculptors," said Geoffrey Bates, Director and Curator.

Inside

- News from the Park
- Focus on House Divided
- Activities and Programs

In her essay *Jogs and Switchbacks* for Puryear's 2007 retrospective exhibition catalogue for **The Museum of Modern Art** in New York, Elizabeth Reede includes an aerial image of **Bodark Arc** and the 2002 *Shoulders* and comments,

*The African chair and the Japanese gateway share a formal likeness, each containing a delicate arc resting on two posts, a relationship that Puryear further explored in *Shoulders*, a 2002 etching. In these three examples . . . the artist chose a basic form to manipulate, and each iteration produced a visually different result.*

The prints were created at Paulson Press in Berkeley, California in editions of 25. Both works demonstrate a bravura execution of a complex printmaking technique called chine colle, in which a sheet of paper, often complementary in color or texture, is placed over the etching plate and affixed to a backing sheet during the printing process.

The works will reside in the Director's office where they will be available for faculty and student study.



Above left:
Shoulders (1st State) 2002
Martin Puryear
Softground etching with chine collé Gampi, Somerset White Paper
Image size: 18" x 24" Paper size: 29" x 34"
Gift of Shirley Weese Young in memory of Donald Young
Collection of the Nathan Manilow Sculpture Park, GSU
2013.1



Above right:
Shoulders (State 2) 2005
Martin Puryear
Hardground and softground etching with chine collé Gampi, Somerset White Paper
Image size: 18" x 24" Paper size: 29" x 34"
Gift of Shirley Weese Young in memory of Donald Young
Collection of the Nathan Manilow Sculpture Park, GSU
2013.2

LandMarks



ReMarks

Governors State University's Nathan Manilow Sculpture Park Board

Geoffrey Bates, Director and Curator

Jacqueline Lewis Olympia Fields, IL President
Elizabeth Kelley Chicago, IL Vice-President
Debra Hooks Flossmoor, IL Secretary

Arthur Bourgeois Richton Park, IL
Jeanna Bridges Homewood, IL
Leona Calvin Flossmoor, IL
Nina Corazzo Chesterton, IN
Ruth Crnkovich Nunnely, TN
Dr. Lori Montalbano Munster, IN
Beve Sokol Olympia Fields, IL
Al Sturges Park Forest, IL
Paul Uzureau Flossmoor, IL

Lewis Manilow, Ex-officio Chicago, IL
Elaine Maimon, Ex-officio Crete, IL
Gebeyehu Ejigu, Ex-officio Crete, IL
Will Davis, Ex-officio Bolingbrook, IL

Website: www.govst.edu/sculpture
General Email Address: sculpture@govst.edu
Phone: 708.534.4486 Fax: 708.534.8959
Hours: Dawn until dusk every day
Admission: Free admission to park, some activities have fees.

LandMarks is printed once a year, distributed digitally 2 times a year.
Please make sure we have your current, correct email address.
Send a message with "LandMarks Address" in the subject heading to sculpture@govst.edu
© 2013 Governors State University's Nathan Manilow Sculpture Park
Please direct questions or comments to Geoffrey Bates, Director and Curator

On cover: **Bodark Arc** (1982), Martin Puryear; detail of bronze throne
Photo: Geoff Bates

Top of page: **Paul** 2005, Tony Tasset
Bottom of page: **Oscar's Inclination** 2002; Michael Dunbar
Photo credits this page: above right & **Oscar's Inclination**: Susan Bates
Paul: Geoff Bates
PA# March 2013 Digitally distributed to 25,000+

I'm writing as our first and, frankly, I hope, final snow of the winter lays in quiet majesty in the park. Al Sturges, a member of the NMSP Board, told me this morning that he's planning on cross-country skiing at the park tonight. Al and his wife Barbara often take good advantage of the gentle slopes which occur throughout our landscape and it was great to hear they'd be leaving distinctive parallel tracks across the park.

A snow in early March doesn't last long, though, and soon spring will be arriving. The season of renewal and growth will see plenty of both at the NMSP this year. We're celebrating the 35th Anniversary of the official creation of the park. In 1978, the Board of Trustees of Governors State University voted to change the title of what had been known as "The Governors State University Center for Monumental Sculpture" to Nathan Manilow Sculpture Park in honor of Nathan Manilow, the visionary developer who, along with Phillip Klutznick and Carroll Sweet, built Park Forest and then University Park. In honor of this important milestone we've scheduled plenty of events from now until late October.

We'll be welcoming 400 sixth graders from Homer Glen's Hadley Middle School for their first visit to the park. Groups will begin to arrive in late April, and continue through late May. They will see how our efforts from last year's Reclaim the Prairie! event begin to manifest themselves along Crawford Avenue near Yes! for Lady Day.

An anniversary is a time to look back, even as we look forward. One of our most recognizable artworks, John Henry's Illinois Landscape No. 5 is in need of conservation. Its original bright yellow hue has faded to a dull French vanilla. We'll be focusing on raising funds for restoration of this iconic piece during the coming year and I hope you'll join us in our efforts. If you feel moved, visit our website and make a generous contribution – and thanks.

See you in the park –

Geoffrey Bates
Director and Curator



www.govst.edu/sculpture





In the Park

Nathan Manilow Sculpture Park Celebrates 35th Anniversary **NATHANMANILOW** 35 SCULPTURE PARK YEARS

As part of a year-long celebration, the Nathan Manilow Sculpture Park unveiled a variation on its logo designed to bring attention to the 35th Anniversary of the official creation of the park. "The prescience of visionaries like Lewis Manilow and Bill Dodd has provided us with a significant legacy," said park director and curator Geoffrey Bates. "Thirty-five years ago people scoffed at the structures which had arrived on campus. Now, people arrive from around the world to visit, walk, and be enriched by the experience of this museum in the prairie. We owe much to them and every administration of Governors State University, which has sought to maintain and grow this cultural resource."

Fifth Winter Walk

Twenty-seven guests enjoyed mild temperatures as they traveled the park paths during the fifth annual **Winter Walk and Chili Dinner** on January 27. The free event, hosted by NMSP Board Member Leona Calvin, offers participants the chance get outside, see the park in a new light, and develop fellowship over an informal meal of chili, corn muffins, and brownies.

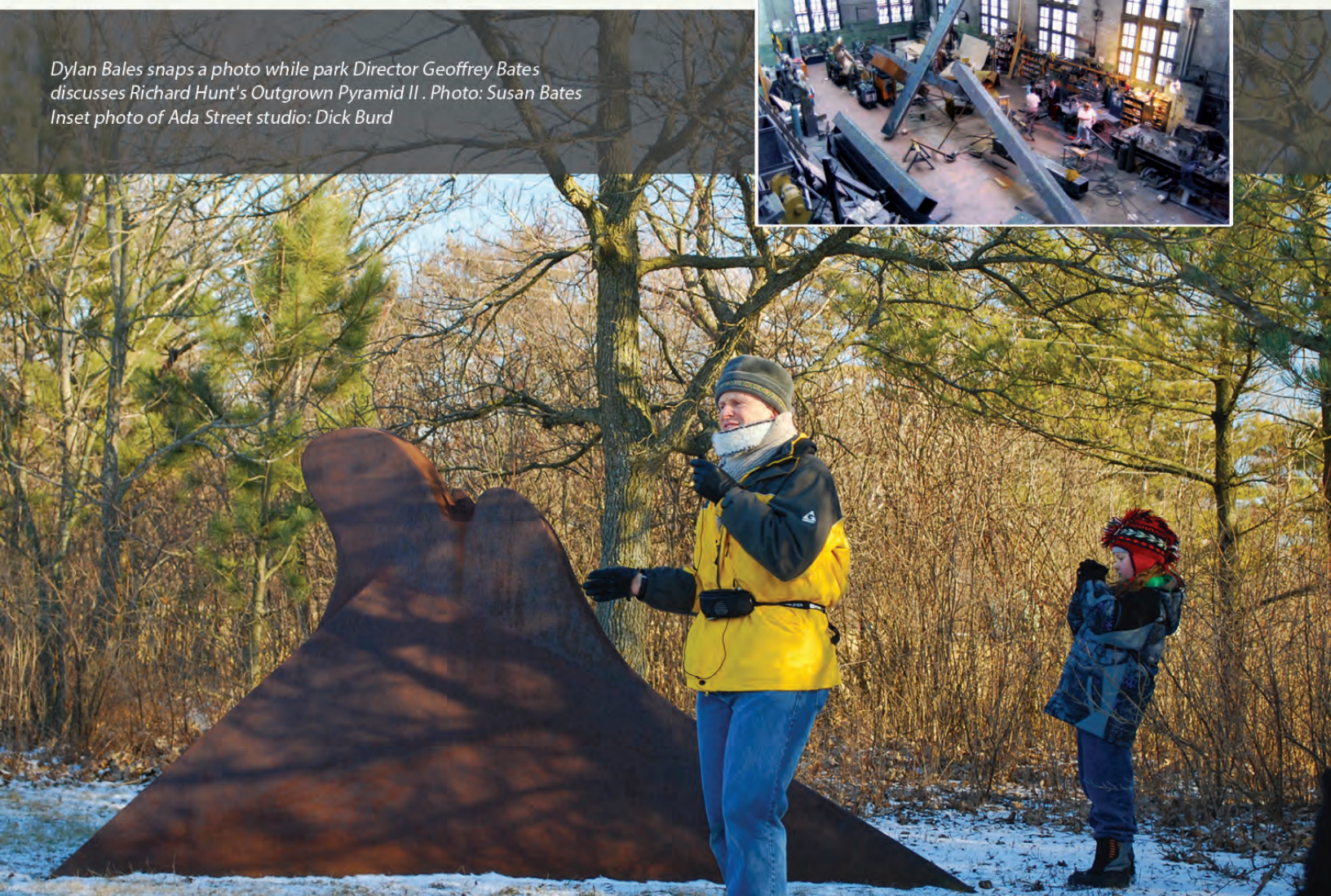
Nathan Manilow Sculpture Park receives Summit Award from South Suburban Small Business Association

The NMSP's innovative programming for the community was recognized by the South Suburban Small Business Association (SSSBA) at its Summit Awards breakfast February 13. SSSBA President Eugene Varnado said the award recognized, "the availability of children's programming at the park."

Corrections

Ted Sitting Crow Garner, a Chicago-based sculptor whose experience with the Nathan Manilow Sculpture Park goes back to its origins, made some observations about the photograph of John Henry's Ada Street studio included in the last issue of LandMarks, "The photo in what was then Richard (Hunt's) and John's studio is probably c. 1973-1974 and probably depicts elements of John's piece "Suntarget" that was created for the "Sculpture In The Park" exhibit that he curated for the Art Institute, which also featured [Yes! for] Lady Day." (Editor's note: A check of the LandMarks studio photograph against a photo of Suntarget's 1974 installation in Grant Park bears out Garner's observation.)

Dylan Bales snaps a photo while park Director Geoffrey Bates discusses Richard Hunt's *Outgrown Pyramid II*. Photo: Susan Bates
Inset photo of Ada Street studio: Dick Burd





Focus on House Divided

House Divided, Bruce Nauman's enigmatic work from 1983, celebrates its 30th anniversary on the campus of Governors State University this year. Nauman, already a force in the artworld at that time, has become one of the most influential American artists of the late-20th Century, creating significant works in photography, video, sound, light, and other media. He was the sole artist/representative at the United States pavilion at the 2009 Venice Biennale in Venice, Italy. This important work is one of only a handful of large-scale, permanent installations created by the artist. It was commissioned by a group headed by Lewis Manilow whose members included Suzanne Ghez, recently retired director of the Renaissance Society exhibition space at the University of Chicago, and GSU Development Officer Bill Dodd.

It can be instructive to contrast **House Divided** to another local landmark building, Frank Gehry's **Jay Pritzker Pavillion** at Millennium Park in downtown Chicago. With his stainless steel, macaroni-like structure, Gehry stretches our expectations of what a building can be. He creates a very sculptural piece of architecture.

Conversely, Bruce Nauman has distilled his vision of a "house divided" into a post-minimalist object which is a very architectural work of sculpture.

During a visit to the campus shortly after its completion, Nauman spoke thoughtfully, if elliptically, about the project. He began with some brief biographical notes which focused on his early times in the studio and moved to the reference to the New Testament passage (Matthew 12:25) by way of Abraham Lincoln, "A house divided against itself cannot stand."

Nauman addressed the project at GSU:

The work out here at the University comes from "House divided against itself shall not stand" . . . When I finally got to the idea of public sculpture. . . I didn't want to be overbearing, not force people into doing something they don't want to do.

He suggests that understanding is available on many levels, "It is available if you are not thinking about art. If you know about art, or art history, it adds something."

The most revealing comments from an artist celebrated for his sometimes confounding sense of ambiguity came as he discussed his personal fears and how, through the creation of this work, he manifests those in the work:

I find triangular rooms and rooms without corners to be anxiety producing. There's no place to hide. There's no place to back into; there's no place where you are not visible from the outside. When you do work and put it out in front of the public, there is a tremendous sense of exposure of yourself. One of the ways that I've used this knowledge is to give only so much, and not more, so there is that sense of tension. I use that tension; of giving, but not giving too much, of giving and then taking back . . .

Nauman's admission of ". . . giving, but not giving too much," has proven to be an enduring challenge to the legions of visitors who have encountered **House Divided**. Thirty years after arrival, its uncompromising simplicity and enigmatic presence continue to pose an aesthetic riddle.



House Divided 1983
Bruce Nauman
cast concrete
Commissioned by the GSU Foundation,
Nathan Manilow Sculpture Park
1983.02

LandMarks

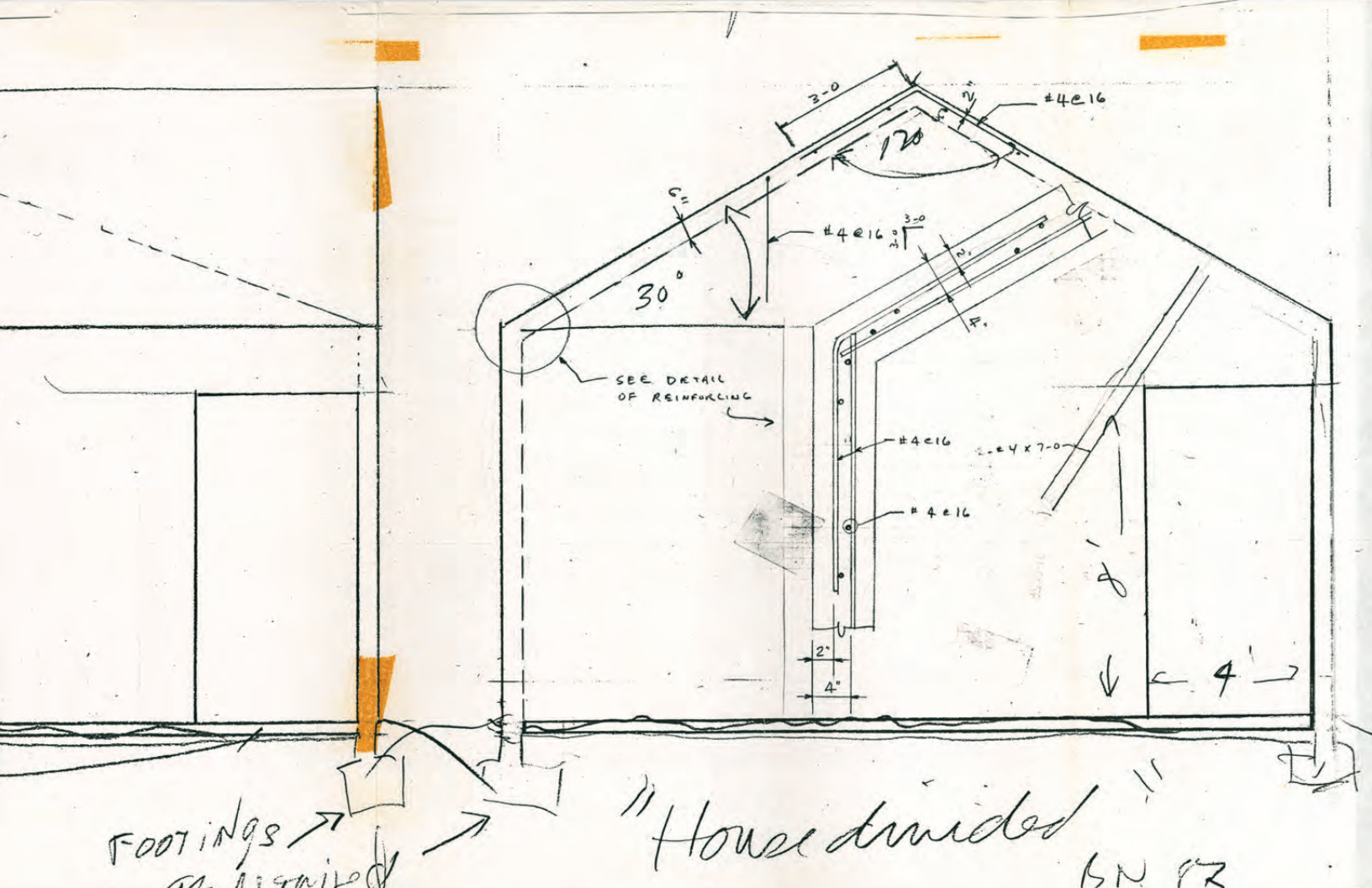


Like any good artist, Bruce Nauman makes art about what he knows. Growing up in Fort Wayne, Indiana, he was familiar with Midwestern farm sheds like this one, seen on I-55 between Joliet and Springfield. The unassuming **House Divided** echoes this familiar scene from the road and challenges passersby to visit and discover its surprise within. Photo credits: Farmer's shed: Geoff Bates, Nauman and House Divided: Dick Burd



House Divided: South Elevation 1983
Bruce Nauman
pencil on paper
(location of original unknown)

Bruce Nauman visited campus
to inspect the finished work
in October, 1983.





Programs and Events

Governors State University's Nathan Manilow Sculpture Park hosts an ongoing series of activities and events throughout the year designed so that guests will experience our art and landscape in new and unexpected ways. Take a look at what we're offering and make time to join us for one or more of our programs.

For the Family

Governors State University's **Nathan Manilow Sculpture Park** and **The Center for Performing Arts** have teamed up to create

A DAY of PLAY that's FUN for the Whole FAMILY

Aesop's Dinosaur Fables

Saturday, March 23 at 11 a.m.

Tickets start at just \$12!

This spirited musical featuring the frolicking action of nine-foot-tall dinosaur puppets and wee TryANTasaurus teaches children the central lesson, "It's better to prepare today for tomorrow."

Visit CenterTickets.net

FREE pre-show 'Story Time' with Storyteller, Lynne Clayton!
Hear fables, fairytales and fantasies from Aesop at 10 a.m. in Engbretson Hall.

Stay for **SCULPTURE ROCKS!** at 2 p.m.
Calling all artists, young and old, to share their artistic abilities. Make your own sculpture with wood, pegboard, Carrara marble, wire, cardboard, dowels, and markers. We supply the materials and some inspiration, and you do the rest!
Limited to 50 children. \$5 for materials. **RSVP at 708.534.3084.**



Reclaim the Prairie!

Sunday, October 27 from 1 to 4 p.m.

Meet in the Cafeteria Annex, D-Wing

For Families

\$5 Adults, \$3 Children

This is a fun introduction to service that kids of all ages will enjoy. Join us for our second harvest and scattering of native prairie seed. Children will learn about prairie restoration, receive a coloring book and crayons, and enjoy a sense of accomplishment while helping our planet. Adults will enjoy learning how to identify, harvest, and sow prairie flora. If you can pick a flower and rub it between your fingers, you can do this!

Reservations requested – contact 708.534.4486 to make your reservation (limit of 30).



Kids, Colors, and Kites

Saturday, May 18 from 1 to 4 p.m.

Along the lake path, north of E-Wing
\$8 per kite

For Families

Flying a kite for the first time is like taking your first steps. It provides an incomparable sense of personal accomplishment and independence. Do you know a kid? Insist they join you at Kids, Colors, and Kites. Buy 'em a kite, watch 'em decorate it, and then feel the warmth inside as they tug on 50 feet of string, visibly thrilled. And remember . . . kites are 3-dimensional objects that fly. No reservations necessary.



Photo Credit: Sam Hall, Jr.

LandMarks

For Grown-ups

Classic vs Contemporary: A Sculpture Smackdown!

The Art Institute of Chicago

Thursday, April 11

Depart University Park Station 8:57 a.m., Return 5:30 p.m.

Limit 20 guests

\$95 per person

Reservation Deadline: Monday, March 18

Twenty guests will have an exclusive encounter with *Of Gods and Glamour*, the AIC's magnificent new installation of classical sculpture in the Mary and Michael Jaharis Galleries of Greek, Roman, and Byzantine Art delivered by Terah Walkup, Research Assistant for Department of Ancient and Byzantine Art. We'll dine at Terzo Piano, the AIC's Michelin Recommended restaurant, and then enjoy a lively introduction to contemporary sculpture in the AIC's acclaimed Modern Wing provided by Geoffrey Bates, Director and Curator of the NMSF.

Your \$95 fee includes

- Round-trip train fare from University Park to Millennium Park Station
- Admission to The Art Institute of Chicago
- Exclusive tour of the Mary and Michael Jaharis Galleries of Greek, Roman, and Byzantine Art
- Two-course lunch at Terzo Piano
- Exclusive tour of the Modern Wing sculpture collection by Geoffrey Bates
- Free-time to visit other galleries and gift shops within The Art Institute of Chicago

\$20 donation to the Nathan Manilow Sculpture Park

(Governors State University Foundation is recognized by the IRS as a 501(c)(3) and your gift is tax deductible)

The day promises to be a no-holds-barred aesthetic smackdown of epic proportions!

Please contact Geoffrey Bates at 708.534.4848 for details of our itinerary and Gina Ragland 708.235.7559 to make your reservation as soon as possible.

Welcome Days Pizza Party

On the 2nd floor patio above the Cafeteria Annex

FREE with GSU Student ID

Watch our website for day and date

The Nathan Manilow Sculpture Park will welcome students new and old to the campus with a Pizza Party overlooking the lake and park. Stop by, grab a slice, or two, or three, and join our trivia contest for the chance to win a GSU coverlet!



Carts & Cocktails

Saturday, September 21, 2013

3 to 6 p.m.

\$100 per person

This annual benefit is the best cocktail party of 2013! Dine lakeside, enjoy a chauffeured golf cart tour of the Nathan Manilow Sculpture Park and help the park celebrate 35 years of sculpture. Tickets are limited to 120 seats, so make sure to get your's early!

Mark your calendar for Saturday, September 21st and be on the lookout for your invitation in the mail.

For reservations **contact Gina Ragland at 708.235.7559**. Sponsorships are available at a variety of levels. **Contact Jackie Small, Director of Major Gifts at 708.235.2188** for more information.

