



1956

# 1956 Ruby Yearbook

Barbara Carol Koch  
*Ursinus College*


Harvey Marvin Levin  
*Ursinus College*

Terry M. German  
*Ursinus College*

Noble M. Smith  
*Ursinus College*

Ursinus College Senior Class  
*Ursinus College*

Follow this and additional works at: <https://digitalcommons.ursinus.edu/ruby>

 Part of the [Higher Education Commons](#), [Liberal Studies Commons](#), and the [Social History Commons](#)

**[Click here to let us know how access to this document benefits you.](#)**

---

## Recommended Citation

Koch, Barbara Carol; Levin, Harvey Marvin; German, Terry M.; Smith, Noble M.; and Senior Class, Ursinus College, "1956 Ruby Yearbook" (1956). *The Ruby Yearbooks*. 60.  
<https://digitalcommons.ursinus.edu/ruby/60>

This Book is brought to you for free and open access by the Ursinusiana Collection at Digital Commons @ Ursinus College. It has been accepted for inclusion in The Ruby Yearbooks by an authorized administrator of Digital Commons @ Ursinus College. For more information, please contact [aprock@ursinus.edu](mailto:aprock@ursinus.edu).



Ruby

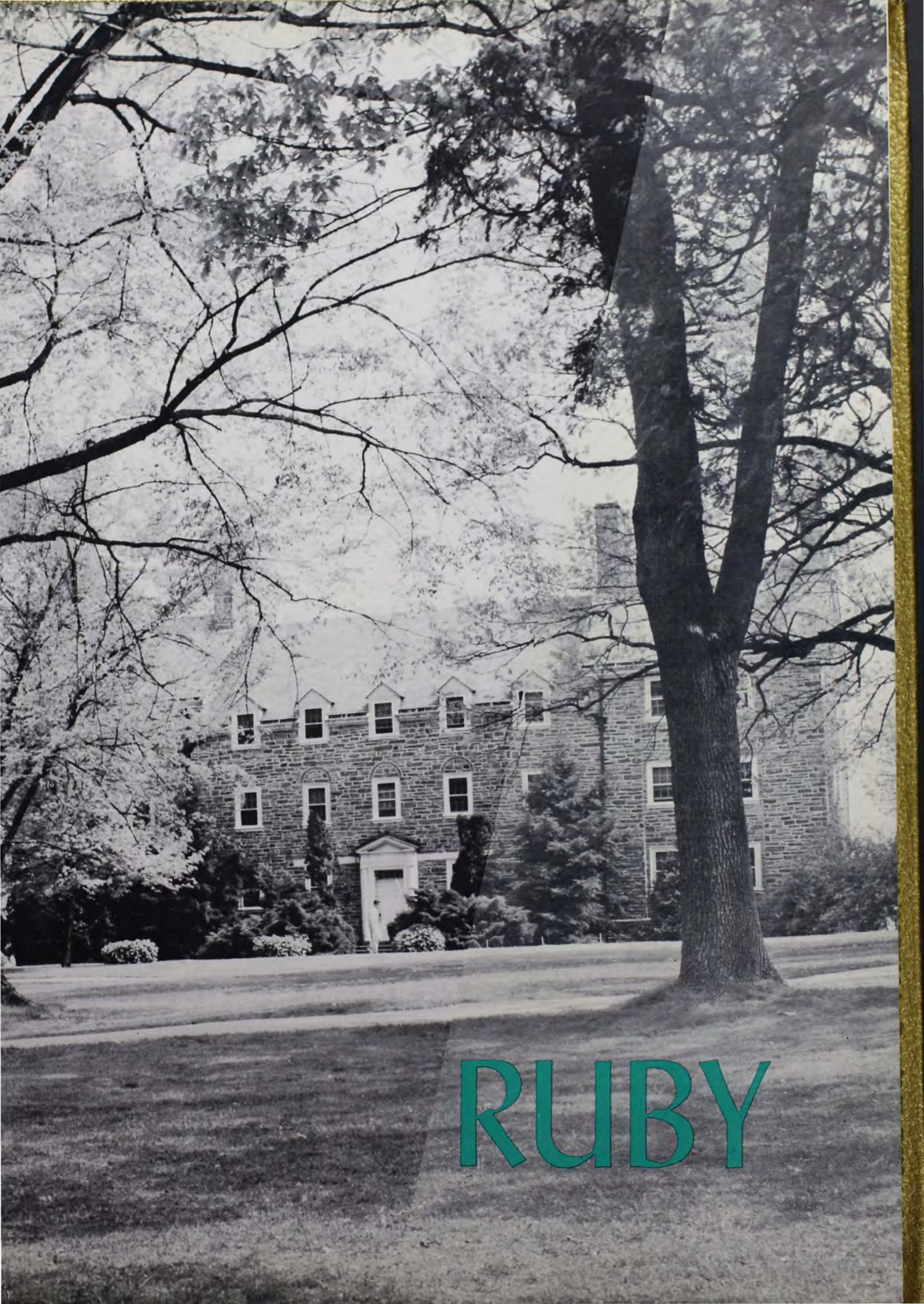
1956



Ursinus College Library

from

Class Ursinusiana Book Ruby 1956  
Accession 47398 c.1



# RUBY



*Join us in a Toast*



*To You,  
the  
college  
student,  
we  
dedicate  
the  
1956  
Ruby.*





*From Education,  
to Evaluation,  
to Administration*



*Administration*



47398





**NORMAN EGBERT McCLURE**  
President

Norman Egbert McClure, Ph.D., L.H.D., LL.D., was elected president of the college on June 6, 1936. He is an Ursinus graduate of the class of 1915 and has served as Professor of the English Language and Literature since 1928.



**DONALD L. HELFRICH**  
Vice-President

Donald L. Helffrich, Esq., HB., LL.B., LL.D., was graduated from Ursinus College in 1921 and from Yale Law School in 1924. He was named Vice-President by the Board of Directors on July 2, 1936. Dr. Helffrich handles the business and financial transactions of the college.



**WILLIAM S. PETTIT**  
Dean of the College

William S. Pettit, M.S., became Dean of the college in February, 1954. Mr. Pettit is also Professor of Chemistry at the college. He is not only a teacher and dean, but also an understanding friend. Mr. Pettit was graduated from the University of Pennsylvania.



**MISS CAMILLA B. STAHR**  
Dean of Women

Miss Camilla B. Stahr, A.B., became Dean of Women in 1938, having been acting dean the preceding year. With diplomacy and understanding, Miss Stahr assists the women of Ursinus in solving their problems. Miss Stahr was graduated from Wilson College in 1911 and has studied at Oxford University.

**G. SIEBER PANCOAST**  
Dean of Men

G. Sieber Pancoast, A.M., Assistant Professor of Political Science and Dean of Men, was graduated from Ursinus College in 1937 and has studied at the University of Pennsylvania. Since 1942, with the exception of two years on military leave, he has been Dean of Men, aiding the Men's Student Council in an effort to maintain discipline.



# FACULTY



MAURICE W. ARMSTRONG, S.T.M.,  
Ph.D.  
Professor of History  
Ursinus since 1945



EVERETT M. BAILY, M.A.  
Director of Athletics and Professor of  
Physical Education  
Ursinus since 1935



DONALD G. BAKER, Ph.D.  
Professor of Greek  
Ursinus since 1932



MAURICE O. BONE, B.C.S.  
Professor of Economics  
Ursinus since 1929



JAMES L. BOSWELL, Ph.D.  
Professor of Economics  
Ursinus since 1923



ALFRED L. CREAGER, B.S., B.D.,  
D.D.  
Chaplin, Associate Professor of the  
History of the Christian Church  
Ursinus since 1947



JAMES D. DAVIS, M.A.  
Assistant Professor of History  
Ursinus since 1945



GEOFFREY DOLMAN, M.A.  
Director of Admissions and Assoc.  
Professor of English  
Ursinus since 1949



RICHARD M. FLETCHER, Ph.D.  
Associate Professor of Psychology  
Ursinus since 1956



ELIZBETH R. FOSTER, Ph.D.  
Assistant Professor of Histo  
Ursinus since 1939-1941; 195

# FACULTY



HELEN T. GARRETT, Ph.D.  
Professor of French  
Ursinus since 1942



RAYMOND V. GURZYNSKI, M.Ed.  
Associate Professor of Physical Edu-  
cation  
Ursinus since 1947



JOHN J. HEILEMANN, Ph.D.  
Professor of Physics  
Ursinus since 1941



JAMES R. HERBSLEB, M.A., LL.B.  
Associate Professor of Economics  
Ursinus since 1949



ROBERT L. HUTCHINSON, Ph.D.  
Associate Professor of Biology  
Ursinus since 1952



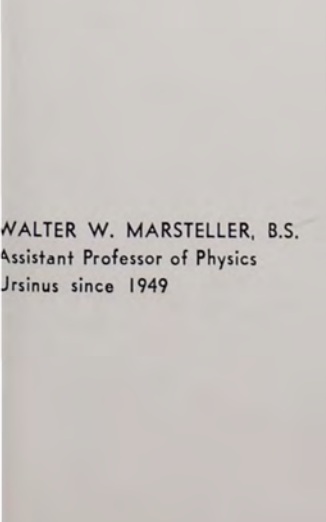
HOWARD L. JONES, JR., M.A.  
Assistant Professor of English  
Ursinus since 1947



AMMON G. KERSHNER, JR., Ph.D.  
Assistant Professor of English  
Ursinus since 1947



FRANK L. MANNING, Ph.D.  
Professor of Mathematics  
Ursinus since 1930



WALTER W. MARSTELLER, B.S.  
Assistant Professor of Physics  
Ursinus since 1949



CHARLES D. MATTERN, Ph.D.  
Professor of Philosophy  
Ursinus since 1937



EUGENE H. MILLER, Ph.D.  
Professor of Political Science  
Ursinus since 1935

JESSIE A. MILLER, Ph.D.  
Lecturer in Sociology  
Ursinus since 1947

JAMES A. MINNICH, M.A.  
Associate Professor of Education  
Ursinus since 1945

ROBERT E. OGREN, Ph.D.  
Assistant Professor of Biology  
Ursinus since 1953



WILLIAM T. PARSONS, Ph.D.  
Assistant Professor of History  
Ursinus since 1947

WILLIAM F. PHILIP, Mus.Doc.  
Professor of Music  
Ursinus since 1935

WILLIAM J. PHILLIPS, Ph.D.  
Professor of English  
Ursinus since 1946

JENEPPER W. PRICE, B.S.  
Instructor in Physical Education  
Ursinus since 1954

ALLEN L. RICE, Ph.D.  
Assistant Director of Admissions and  
Professor of German  
Ursinus since 1947

ALFRED D. ROBERTS, M.A.  
Assistant Professor of Romance Lan-  
guages  
Ursinus since 1949

RICHARD T. SCHELLHASE, B.A.,  
B.D.  
Assistant Professor of Religion  
Ursinus since 1956



F  
A  
C  
U  
L  
T  
Y



BLANCHE B. SCHULTZ, M.S.  
Assistant Professor of Mathematics  
Ursinus since 1946

ELEANOR F. SNELL, M.A.  
Professor of Physics  
Ursinus since 1931

EVAN S. SNYDER, M.S.  
Assistant Professor of Physics  
Ursinus since 1944

ROGER P. STAIGER, Ph.D.  
Associate Professor of Chemistry  
Ursinus since 1943



RUSSEL D. STURGIS, Ph.D.  
David Laucks Hain Professor of Chem-  
istry  
Ursinus since 1925

HARRY C. SYMONS, M.A.  
Assistant Professor of Economics  
Ursinus since 1947

GEORGE R. TYSON, Ph.D.  
Professor of Psychology and Educa-  
tion  
Ursinus since 1927

HARVEY R. VANDERSLICE, E.A.,  
Ph.D.  
Professor of Education  
Ursinus since 1947

PAUL R. WAGNER, Ph.D.  
J. Harold Brownback Professor of Bi-  
ology  
Ursinus since 1932

ALFRED M. WILCOX, M.A.  
Professor of French  
Ursinus since 1935

CALVIN D. YOST, JR., Ph.D.  
Professor of English  
Ursinus since 1934



F  
A  
C  
U  
L  
T  
Y



**PRECEPTRESSES**

*First Row:* Mrs. Evan S. Snyder, Mrs. Robert H. Ogren, Miss Camilla B. Stahr, Mrs. Charles King, Mrs. Clement DeChant. *Rear Row:* Mrs. William U. Helfferich, Mrs. Glennie F. Hazlett, Mrs. Edgar Baird, Mrs. Paul E. Towers, Mrs. A. E. Schellhase, Miss Mildred Morris, Mrs. G. Henry Shyrock.



**NURSES**

Miss Helen M. Moll, R.N.; a patient; Mrs. Verna Schusner, R.N.



**TREASURERS**

Wallace Angstadt, James R. Rue, Frederick Wentz.



**LIBRARY STAFF**

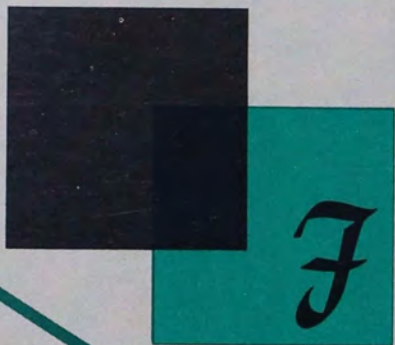
T. Spencer Hand, Assistant Librarian; Mrs. Roger P. Staiger, Circulation Assistant; Robert F. Sutton, Head Librarian.

**MAINTENANCE CREW**

Harvey Hutt, Earl Lewis, Anthony Fanaro, Russel Remig, Albert Baker.



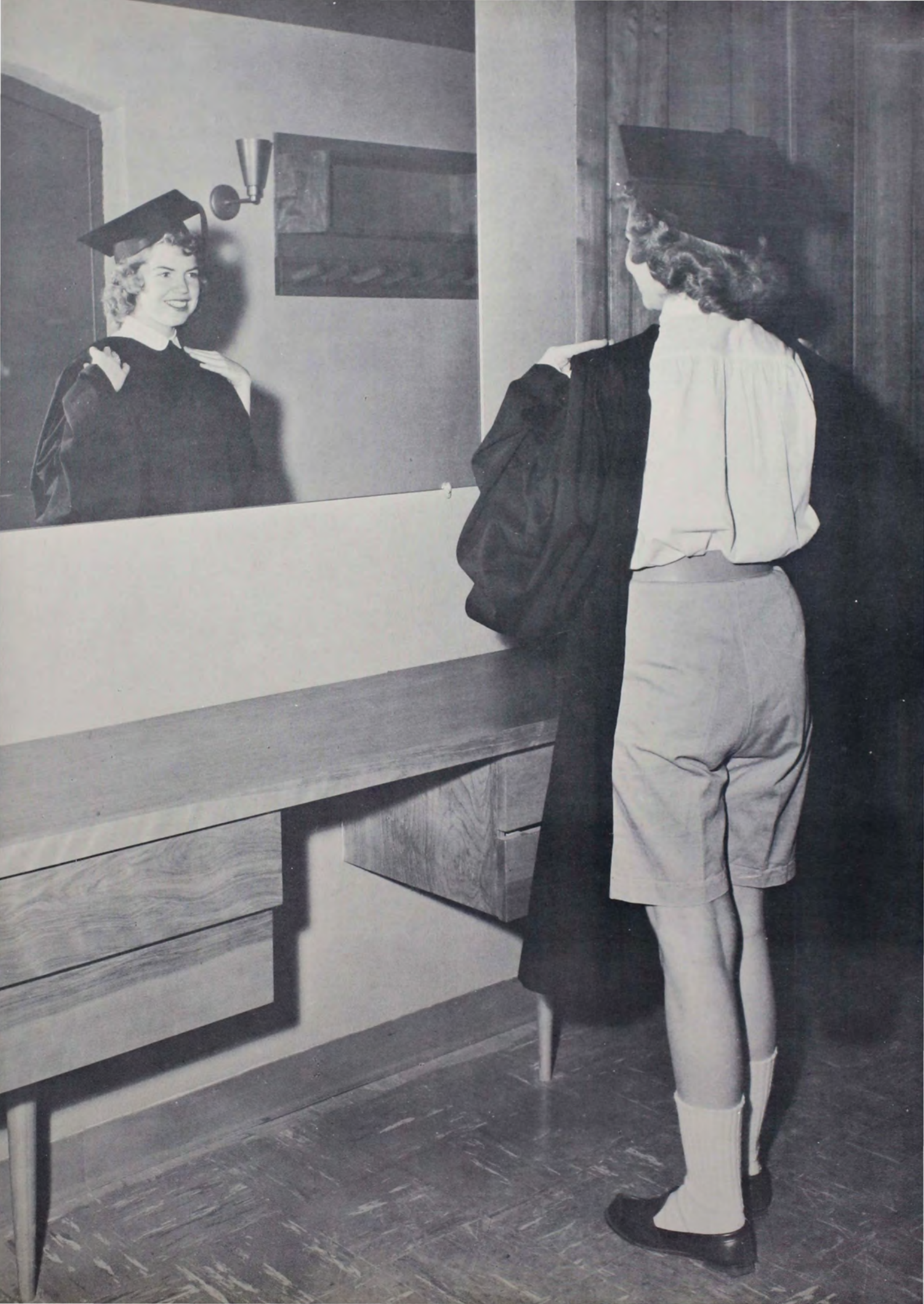




*F*or those who Arrived,  
for those who Strived,  
for those who Survived



*Graduates . . .*



# CLASS HISTORY

The span of years marking our lives seems to be just as compartmentalized, just as sectioned, as all the other facets of our existence. As our lives are shared by science, economics, history, and in turn their various subdivisions, so are these our same lives split into periods of time. There are the individual days, months, and years, and these in turn are grouped into large periods. We call these larger periods stages in the process of growing up, phases of adjusting ourselves to our environment, so that we may make the most of what we have in the given conditions in the midst of which we exist.

The four years or so which we were fortunate enough to spend in college make up a sizable part of one of these periods. They rest upon our childhood, our elementary school days, the extension of our adolescence from junior high school to high school, through college. It seems as if these latter four years at Ursinus are, for the most of us, the grand finale in our quest for a measure of adulthood. This is a period when our adjustive processes should be nearing a focal point, when we are beginning to realize what our potentials are and are trying to utilize them in striking a happy medium between ourselves and those around us. Some of us have made the grade now, some of us will wait to bring ourselves into proper focus.

Yes, our four years at college have passed. Text books have come and gone, one more expensive than the last, and for many of us that has been our college history. But college is much more than books, instructors, and grades. College, as we should see it in retrospect, if we have not seen it fully yet, as it moves toward its physical



close is much more than an interim for studying between weekends. It is more than worrying about marks, tests, starvation in the college dining hall; it is more than sitting in your dormitory room or merely muttering an unconscious "hi" to those we have passed on the way to Pfahler or Bomberger; it is more than trudging to classes or trying to wake up in chapel. College is living and learning with other people. It is getting to know individuals, learning how to fit ourselves into their society. It is adjustment.

College is a small, seven letter word, but it has all the meaning you want to give it. We had the opportunity to make use of most of our abilities here, if we wanted to; many of us held back and lost a wonderful chance to begin making ourselves a wholesome part of society. We had our chances in athletics, making literary contributions to school papers, participating in school and class government, and in planning our social functions. We had the opportunity to release built up tension in our dances, proms, plays, intramural athletics and in rooting for our teams. And most of all we had the opportunity to associate more closely with the people of Ursinus. It was up to us whether we had a little petite life or a big complete one here. This opportunity has fled, but the cycle of life is constantly providing new ones. We start as freshmen many times and many times we become seniors only to realize that we are on the verge of beginning as freshmen again. We should have learned the path to true seniorship, for we all leave college as seniors and enter life as novice freshmen once more. Let us profit by our triumphs and our failings by building on the former and correcting the latter.





RAY DRUM, President



PHIL HOW, Vice-President



KATHLEEN FRETZ, Secretary



BART WILSON, Treasurer



MARLETTE ALLEN



GEORGE AUCOTT

**MARLETTE ALLEN**  
"Marlette" . . . usual address, third floor Pfahler . . . "Oh, I just can't think!" . . . leader and financier of KDK, Beardwood, and day study . . . "Danny Boy" . . . stalwart Alpha Psi . . . daily trek from Schwenksville . . . "But, I don't have an accent!" . . . always willing to help anyone, anytime . . . problem solver . . . born mechanic.

**GEORGE AUCOTT**  
"Percy" . . . 401 boy . . . Varsity Club Pres. . . . football . . . wrestling . . . tennis . . . Meister singers . . . Messiah . . . biggest of the big three . . . reincarnated genius, tray snatcher, and foot washer . . . Dean's lister . . . loyal APE . . . "Just half an hour of bridge?" . . . "Ruth" . . . "I forgot the words." . . . "Sure, Ed, sure." . . . Dixieland.

**RICHARD BARNDT**  
"Mario" . . . butcher from Bethlehem . . . I.R.C. . . . sleeper of Brodbeck . . . hunting and fishing fiend . . . weekly singing lesson in Phila. . . . married—one son . . . bus. adder . . . "Call me in." . . . "I'm so tired." . . . frequent complainer . . . "Sure, I'll play pinochle." . . . "Let's go to Nick's." . . . "Gotta call my wife."



RICHARD BARNDT

**JUNE A. BARRON**  
"June" . . . rests before she sleeps . . . F.T.A. . . . Armstrong disciple . . . Hobson's scribe . . . frequent off-campus weekends . . . Ocean City summers . . . Blake expert . . . "Didn't I get any mail?" . . . Mademoiselle de Paris . . . "Hey, let me light it." . . . former O Chi chaplain . . . sweet and sensible . . . chapel organist for three years.



JUNE A. BARRON

RUTH G. BAUSER

MARTHA J. BEAN



**RUTH G. BAUSER**  
"Ricky" . . . pretzel lover . . . Tau Sigger . . . camp word! . . . lacrosse instigator . . . hockey goalie . . . Shreiner's poet laureate . . . phys. edder . . . future teacher . . . Gary!! . . . "How many letters this week?" . . . another new car . . . golfer? . . . WAA . . . one of Snell's klunkers . . . master bull thrower . . . the dialect in those jokes! . . . island wanderer . . . caffeine kid.

**MARTHA J. BEAN**  
"Beanie" . . . "Guess what?" . . . "Come on Roommate!" . . . Beanery from Creamery . . . future doctor . . . KDK'er . . . permanent Rosie . . . Dean's lister . . . Chi Alpha . . . chapel choir . . . "Well, I flunked that one!" . . . and how she loves cows . . . her delicacy, catsup bread . . . South Hall's "silent one" . . . always on time? . . . effervescent + . . . one great gal!

**LOUISE F. BECKER**

"Louise" . . . "Ho, hum" . . . took Italian for hours . . . five eight o'clocks . . . "Pizza!" . . . one of the four "A's" . . . loves to sleep . . . Dean's lister . . . O Chi sorority . . . handy with a needle and thread . . . those resounding third floor steps . . . musically inclined . . . "Number, please?" . . . "That's vile." . . . bio. major.



LOUISE F. BECKER

**B. RUTH WILCK BEEKHUIS**

"Ruthie" . . . Glenwood gal . . . proud owner of a 1955 husband . . . O Chi . . . "California, here I come!" . . . Dean's lister . . . majorette . . . "Oh, those history courses" . . . just plain Bill . . . "Gotta finish those socks." . . . platinum blonde . . . second home—Broad Street Station . . . from U.C. to Berkeley and back again . . . "Where's Con?"



B. RUTH WILCK BEEKHUIS



MORGAN B. BEEMER



KARL DAVID BILLMAN

**MORGAN B. BEEMER**

"The General" . . . business prodigy . . . perennial German student . . . "I think I'll go out for football this year." . . . the old man of Beta Sig . . . "I'm on the wagon." . . . M.S.G.A. . . . "I'll never get married" . . . pipe smoker . . . "If I had you guys in the Army." . . . a lasting friend.

**KARL DAVID BILLMAN**

"The bear" . . . been known to take in a flick . . . "dean" of the evening school . . . grinds flour at "The Mill" . . . Atkinson of the *Weekly* . . . "Billet, Billet" . . . the mad typist . . . unemployed Republican . . . clean cut P.K.? . . . lots of sit down and stay . . . Demas . . . the poor Egyptian . . . stationery . . . "Where's Keegie?" . . . stucic exchequer.

LILLIAN BISTREMOVITZ

ROBIN M. BLOOD

**LILLIAN BISTREMOVITZ**

"Lil" . . . German Major . . . hails from the "City of Gracious Living" . . . definitely no philosopher . . . loyal Yankee fan; wait until next year . . . Sig Nu prexy . . . "Anyone for bridge?" . . . big sister to two . . . more decorations? . . . money bags . . . four years in Duryea . . . four years with Pris.



**ROBIN M. BLOOD**

"Robbie" . . . "You're kidding!" . . . prexy of W.S.G.A. . . . always at a meeting . . . peppy cheerleader . . . "What's the best sorority on Campus?" . . . known as "Little Taffy" . . . "Oh, I lived there once!" . . . one of the Glenwood gals . . . summers in A.C. . . . Demas' queen . . . always giggling . . . "Do you want a wheat thin?"





FRED C. BOOTH



BEVERLY ANN BOWMAN

FRED C. BOOTH  
Accelerated economics major . . . married . . .  
Navy veteran . . . day student.

BEVERLY ANN BOWMAN  
"Bev" . . . "What's the matter, Sweets?" . . .  
"Crikey-moses, you nig-nog!" . . . cosmopolitan  
member of the Clamer clan . . . O Chi place-card  
designer par excellence . . . "Anyone for tennis?"  
. . . combination bird dog, snake hunter and camp  
fire girl . . . Bowman's favorite capsule . . . belle  
of her biology labs . . . clown!

GWENN S. BREAM

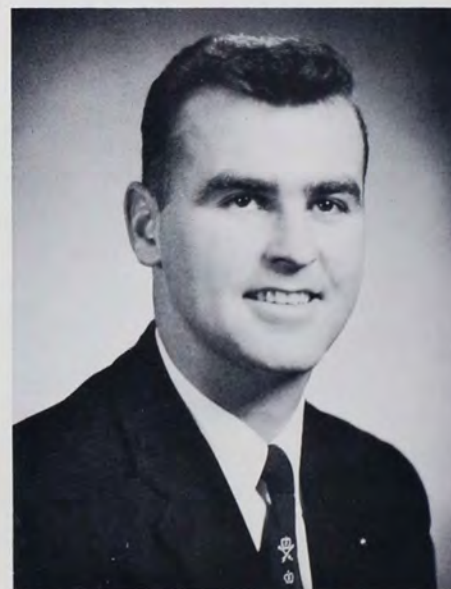
"Gwenn" . . . ex-Tookie . . . phys edder . . . Hobson's artist . . . money bags of Phi Psi . . . loyal to Beta Sig . . . W.A.A. cabinet . . . sparkling Swede . . . "Call me at 5:55." . . . records for Curtain Club . . . prexy of 88 fan club . . . "Himmel" . . . drum beats for heart beats . . . lanky marm of Lansdale.



GWENN S. BREAM

JAMES C. BROSIIOUS

"Bro" . . . Beta Sig . . . sick call charter member . . . young man with a sax . . . dependable . . . college dance band . . . International Relations Club . . . Spirit Comm. . . intramurals . . . "lover"



JAMES C. BROSIIOUS

F. PATTERSON BROWN



PATRICIA ANN BURNS



F. PATTERSON BROWN

"Frank" . . . president-elect of the Curtain Club . . . Beta Sig . . . "I'll do it first thing tomorrow!" . . . pre-medder . . . bermuda shorts . . . Alpha Psi Omega . . . sleeper . . . Y.M.C.A. . . chapel cutter extraordinary . . . second and third year moneybags . . . "Listen to what they did to me!" . . . Lakeside tray juggler . . . snappy dresser . . . Stuiç.

PATRICIA ANN BURNS

"Pat" . . . student teaching . . . Spirit Committee's pep . . . "Lifeguard, save my child!" . . . those unprintable jokes . . . Messiah monotone . . . O Chi . . . Clamer clan . . . sits still only when studying . . . sun worshiper . . . "I'm hungry!" . . . "Ah, ha, Je vous vois!" . . . sets her naturally curly hair . . . that unforgettable laugh . . . sharp stylist.



NANCY CARSON



M. HOPE COBURN

NANCY CARSON

"Nancy" . . . fishpond . . . songbird of Hobson . . . Rosie president . . . great sense of humor . . . oh, those eyes . . . "Drug, anyone?" . . . thrives on cigarettes and coffee . . . responsible for Hobson's midnight fire drills . . . volleyball champ . . . knows Norristown like a book . . . gets out of bed with a thump . . . clever and considerate.

M. HOPE COBURN

"Hope" . . . one of the Glenwood gals . . . "Oh, gee, thanks!" . . . Sigma Nu . . . "Shall I sew you in?" . . . Messiah . . . "They're cute kids, but . . ." . . . summers in A.C. . . . "Come and tell me your troubles." . . . breakfast fanatic . . . professional bridesmaid . . . "Let's face it!" . . . second home—library . . . "Anyone seen Con?"

PATRICIA G. CONDON

"Pat" . . . veep, KDK, Beardwood . . . South's president . . . "Get me up for breakfast." . . . natural habitat, third floor Pfahler . . . Stars and Players . . . "Oh, piddle!" . . . chapel choir . . . "Hey, Beanblossom!" . . . that orderly desk . . . the whistler . . . studies by osmosis . . . "Precious Pat" . . . those 3 a.m. concerts . . . "Subway!" . . . best roommate ever.



PATRICIA G. CONDON

G. ROBERT CONSTABLE

"Bob" . . . "Mew" . . . Phi Beta Kappa of Beta Sig . . . adopted coal miner . . . personality personified . . . pinned to Joanie, the "Go, Cahs, go" girl . . . spirit committee . . . Dean's list . . . days in Derr . . . prowlin' with Roy at 2 a.m. . . . "Here comes Sieb!" . . . Jeff-bound pre-medder . . . Ruby staff . . . Hobson visitor . . . Speedie Cleaner . . . Stuic.



G. ROBERT CONSTABLE

JACK CRANSTON

WILLIAM ROBERT CRIGLER

JACK CRANSTON

"Shad" . . . acting Curtain Club president . . . Messiah chorus . . . "I'll be dipped!" . . . pre-med . . . Alpha Psi Omega prexy . . . one of Ray's runners . . . APE . . . weekend hitch-hiker . . . dog lover . . . "Seriously, Sam!" . . . Temple Med in '56 . . . "Hey, Larr!" . . . ass't head waiter . . . always out for kicks . . . seen in the gallery . . . promising future.

WILLIAM ROBERT CRIGLER

"Crig" . . . four-year Derr man . . . four-year football . . . Meistersingers . . . "swivel hips" . . . Varsity Club . . . Demas . . . baseball . . . grouchy breakfaster . . . "Ebb Tide" . . . squaw man . . . through college without a beer . . . U.C.'s Mr. B. . . . "scooter" . . . Charles Antell rep. on campus . . . Laughter, Inc. . . . prexy Little Men's Club





**SHIRLEY DAVIS**

"Shirl" . . . pint-sized phys edder . . . one of Maples' ladies . . . "Who stole the kitchen key?" . . . love that giggle . . . famous for wild escapades . . . "Okay." . . . Supply store bridge major . . . wears KDK's green and gold . . . one of Stars and Players . . . student teaching blues . . . Dancing again?"



SHIRLEY DAVIS

**CAROLINE DeOLDEN**

"Perk" . . . the "Perkiomen gambler" . . . ardent Phi Psi'er . . . a witness of Maryland??? . . . "fizz" edder with a sharp whistle . . . "Those uncoordinated kids!" . . . "Only if you wash my car." . . . "Wake me up in five minutes." . . . those California parties! . . . minors in bridge . . . favorite pastime—hitch hiking . . . "But, Margie!" . . . "kwitchurbelyakin."



CAROLINE DeOLDEN



HARRY W. DONNELLY



RAY K. DRUM

**HARRY W. DONNELLY**

"Bud" to his father . . . Demas pres. . . fall guy for varsity club head . . . one-man track team . . . lightest 170-pounder on football team . . . girl bait . . . "That's the story of my life." . . . drugs it occasionally . . . perennial Spanish student . . . "That's a typical phys-edder." . . . golf, canoe, and indoor sport enthusiast.

**RAY K. DRUM**

"Rum Dum" . . . prexy of Beta Sig . . . Major Domo of senior class . . . hot rod . . . frequent visitor of Hobson . . . pre-dent . . . Soph. rules head . . . Sieb's pet . . . member of quiet days at Derr with Bob and Ray . . . procrastinating expert . . . instigator of Drexel haircuts . . . Veep of frosh-soph class.

ERIC C. DUCKWORTH, JR.

MARILYN A. DURN

**ERIC C. DUCKWORTH, JR.**

"D. Duck" . . . bus. ad. . . Postmaster General . . . Business Manager of *Weekly* . . . "Duckmobile" . . . "It don't hurt any more." . . . Musketeer I . . . sportsman . . . Beta Sig refreshments . . . "Going to the library to study." . . . "Haven't cracked that course yet." . . . "Licensed?" . . . "See Harv or Randy?" . . . 104 Club . . . L.A.M . . . "Holy Moses."



**MARILYN A. DURN**

"M.D." . . . "I can't find the gosh-darn thing!" . . . O Chi prexy . . . Pre-Med scribe . . . "I'm hungry—got any food, Con?" . . . Bethlehemite . . . "Holy Cow!" . . . shore weekends . . . waiter's waiter . . . one of the Glenwood gals . . . Rosie . . . "What's the best sorority on campus?" . . . Robbie's roomie . . . "What a riot!"



PETER V. C. EARLE

"Pete" . . . "Ever hear of Goshen?" . . . Veep of Sigma Rho . . . frequent visitor of Shreiner . . . Meistersingers . . . Messiah . . . helps Harry with Spanish . . . President of Canterbury Club . . . quartet . . . proctor of Brodbeck . . . former rowdy of Stine . . . "Van Cortlandt" . . . Ruby business staff . . . I.R.C. . . psych. major . . . jeepers . . . whistles occasionally . . . "H'lo."



PETER V. C. EARLE

JOHN ALAN EDSON

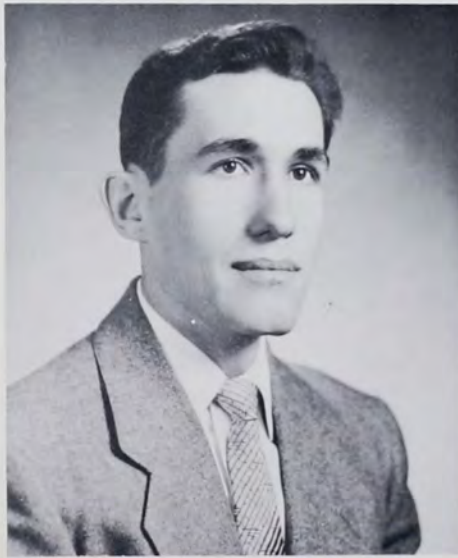
"Jack" . . . A.P.E. . . "down by the Riverside" . . . weekends in A.C. . . campus activities? . . . the "hot" Ford . . . water skier . . . "Ya know?" . . . ardent beach fan . . . Cap'n Jack . . . attending fraternity meetings . . . afternoon P.A.L. with the boys . . . my Boola boy . . . "Hey, Em."



JOHN ALAN EDSON



THOMAS O. ELY



WAYNE E. ENGLE

THOMAS O. ELY

"Tom" . . . President of "Y" . . . Messiah chorus and boy Meistersinger . . . those lousy tenors . . . tennis team . . . to Florida in a jeep . . . Doc Baker's left wing . . . helped bury 724 . . . those "Y" retreats . . . the night raiders of 724 . . . the quartet . . . headed for Uncle Sam, then to road building . . . "Don't get excited." . . . "Live it up—every day is New Year's."

WAYNE E. ENGLE

"Wengel" . . . soccer co-captain . . . basketball . . . high financier of Demas . . . Dean's lister . . . Daytona Beach fan . . . has been known to get traffic tickets on long trips . . . a fourth for Curtis' 203 bridge competition . . . likes to go "South" . . . ping-pong enthusiast at times . . . has a few credits.

NAOMI FAUST

NAOMI FAUST

"Nonie" . . . one of the Fircroft instigators . . . deadly practice teacher . . . "I hear a mouse!" . . . her heart belongs to Beta Sig . . . ad libs minutes of KDK . . . "Breakfast?" . . . convincing soph . . . "Is that a boat under the bed?" . . . Meeerrry Christmas . . . "Now look, buddies." . . . a real sweetie pie . . . sincere friend.



VINTON D. FISHER

"Vin" . . . orderkeeper of Sig Rho . . . "I'm irked." . . . pres. of I.R.C. . . "Oh, that freshman at Rimby's!" . . . Ruby business staff . . . "Fisher's first" . . . Pi Gamma Mu . . . also been to Nick's . . . "the worrier" . . . Dean's lister . . . "Herb, get a date!" . . . track . . . fencing . . . pol. sci. personified . . . constitutional "itch" of Sig Rho . . . "point."



VINTON D. FISHER



ELIZABETH C. FOGG



JEANETTE YEAGER FOREMAN

ELIZABETH C. FOGG  
"Libby" . . . Messiah . . . future librarian . . . a four-year Hobsonite . . . ardent bridge player . . . favorite pastime—coffee breaks . . . French club . . . "Cookies??" . . . that subtle humor . . . "Anyone for golf?" . . . helpful on May Day committees . . . German for hours . . . "Reading courses!!" . . . hails from South Jersey . . . "I hope my car will start!"

JEANETTE YEAGER FOREMAN  
"Jennie" . . . Pete-Panama pen pal . . . daily dash, Royersford-U.C. . . Phi Psi pal . . . Messiah . . . Delta Pi's homecoming queen in '53 . . . Rosie . . . frantic French student . . . French club veep . . . oh, that student teaching . . . the shortest of the majorettes . . . court-Junior Prom . . . past Day Study prexy . . . Panama-bound.

MARY A. FRANTZ  
Hobson's prexy . . . Omega Chi's corresponding secretary . . . Messiah alto . . . veteran may-poler . . . "Heavens!" . . . slender brunette from Easton . . . one of Dr. Yost's faithful . . . familiar with Norristown . . . visits to Yonkers . . . diamond from Bob on her left hand . . . "Dutchy" . . . W.S.G.A. . . . "I could live on hamburgers" . . . future in Philadelphia . . . "Bridge, anyone?"

KATHLEEN C. FRETZ  
"Kay" . . . alumnae secretary . . . "Hutch" . . . weekends at Penn and Broomall . . . secretary to Miss Stahr and Alpha Sigma Nu . . . "I believe it." . . . practice teaching at Springford . . . "spitties" . . . sound sleeper . . . neat dresser . . . "Quiet hour!" . . . Oh, that laugh! . . . "Are you ready?" . . . Messiah . . . nightly rush for shower . . . caffeine kid.



MARY A. FRANTZ



KATHLEEN C. FRETZ

JANE T. FREW

PRISCILLA CHERRY GARLICH



JANE T. FREW  
"Janie" . . . high stepping majorette . . . 944's entertainer . . . O Chi gal . . . "Certainly!" . . . "Oh, that summer in O.C." . . . effervescent personality . . . "Exercise time!" . . . "Wake me up in ten minutes." . . . those weekly jaunts to Penn State . . . coffee breaks . . . blue eyes . . . "Where are my keys?" . . . another chorus line . . . "Let's raise ned!"

PRISCILLA CHERRY GARLICH  
"Pris" . . . math major . . . went KDK . . . nightly letters to Newport . . . the "Mrs." of Duryea . . . working her way through college . . . Duryea prexy . . . four years in Messiah . . . wore out the couch in Duryea . . . Dave's Chris . . . big sister to two . . . rendezvous in New York . . . four year's with Lil.

**CONSTANTINA GEORGARIS**

"Dina" . . . O Chi girl . . . "Are you going to be long?" . . . avid Spanish student . . . Western Union . . . "Gotta catch that 1:58!" . . . fatal trips to Philadelphia . . . dread those eight o'clocks . . . easy going . . . "Don't let it worry you." . . . "When's my *Vogue* due?" . . . philosophical mind? . . . one of the Studio trio.



CONSTANTINA GEORGARIS

**TERRY M. GERMAN**

"Ter-Ter" . . . Cub and Keyer . . . veep of Spirit Committee . . . "Hi-ho, Terry babe." . . . *Ruby* business manager . . . occasionally laughs . . . "Cut it out, you guys." . . . "I'm pulling an all-nighter." . . . mesomorph gone to pot . . . one-half of gold dust twins . . . bloodshot eyes . . . known to sleep . . . MSGA . . . Jeff-bound . . . ZXer . . . *Weekly* . . . Staic.



TERRY M. GERMAN



FREDERIC A. GODSHALL



BURTON P. GOLDFINE

**FREDERIC A. GODSHALL**

"Fred" . . . physics major . . . member of Beta Sig . . . "I've got a speedy Ford" . . . member of wrestling and soccer teams . . . M.I.T. bound . . . meteorology . . . Collegeville boy . . . European tourist . . . summer vacationer par excellence.

**BURTON P. GOLDFINE**

"Burt" . . . Aggravate the most possible people in the least amount of time." . . . "I'll never eat another zep!" . . . "If I don't get a letter today!" . . . pre-med vice-president . . . "I think I'll take out her girl friend." . . . pinochle major . . . "You're gonna laugh soon, German!" . . . Temple med. school . . . "I'll dance!"

**PAUL A. GRAF**

Invader from De Paul . . . president of Fat Man's Club . . . amateur philosopher of Beta Sig . . . bridge expert . . . "Coffee at the drug?" . . . protege of Dr. Boswell . . . intramural star . . . *Ruby* staff . . . golfer . . . "Anyone for the movies?" . . . Stan Kenton fan . . . wee hours at Hobson.

PAUL A. GRAF

RUSSEL GREBE

**RUSSEL GREBE**

Philadelphia express . . . always on time except when delayed . . . known as the mad chemist . . . future explosive . . . loves to eat, sleep, and ? . . . "Hey, that's great!" . . . studies from 3 to 6 A.M.





ROBERT H. GRIESER



JOAN ARLINE GRIGGER

ROBERT H. GRIESER  
"Jake" . . . four-year Stine man . . . Beardwood Chemical Society . . . cocktails at five . . . "The Crow" . . . haunts third floor of Pfahler in winter; plumber in summer . . . Russ' buddy . . . Van Gogh room . . . faithful to Canterbury Club dinners . . . "Have a tampa?" . . . "How 'bout a tankard?" . . . plays Wagner at 3 A.M. . . . "Who's to say?"

JOAN ARLINE GRIGGER  
"Joanie" . . . Baird's prexy . . . tea and merry-making at ten . . . Meistersingers soprano . . . Temple bound, but there's something about Jeff! . . . Chi Alpha . . . another chem sorceress . . . on and off Dean's lister . . . color guard . . . "En garde!" . . . energy to spare.

JEAN ANN HAIN  
"Jeannie" . . . one of the "dumb Dutch" . . . sleepy teacher . . . ready blush . . . caffeine kid . . . "Anyone seen my roommate?" . . . Yost's disciple . . . WSGA . . . "Today's a red sweater day." . . . Tau Sig . . . Pi Gamma Mu . . . swims too . . . always scurrying . . . "Oh, dear!" . . . friend indeed . . . last of the Bairds girls . . . main interest—Jack.

MARYHELEN HARTLIEB  
"Maryhelen" . . . math major . . . weekend commuter . . . one of the Shreiner crew . . . practice teaching at Worcester . . . Messiah . . . pinned to the "Agent" . . . KDK secretary . . . "Breakfast, tomorrow?" . . . supply store bridge fiend . . . "Drug tonight, Barb?" . . . tools around in her '46 Dodge . . . "I've never been this busy." . . . argyle knitter.



JEAN ANN HAIN



MARYHELEN HARTLIEB

RICHARD A. HECTOR

C. ELIZABETH HEINRICHS



RICHARD A. HECTOR  
"Dick" . . . economics and history . . . New Yorker . . . Delta Pi Sigma . . . *Weekly* . . . Alpha Phi Omega . . . Carleton Fitzgerald . . . "I could cry." . . . Mr. Flint, the prosecutor . . . student director, "Mad Woman" . . . French club . . . seen at la table francaise . . . to Germany and France at Uncle Sam's request . . . site in history classes . . . plans to teach . . . varsity debater.

C. ELIZABETH HEINRICHS  
"Beth" . . . inertia personified . . . from New York—proud of it . . . hard to keep track of . . . Sigma Nu veep . . . "Be sure to wake me." . . . poet of sorts . . . never too busy for nonsense . . . "Wednesday's "Y" night" . . . *Weekly* sessions at the *Independent* . . . to know her is to love her.



RUTH T. HELLER



FAITH LOUISE HELMLE

RUTH T. HELLER  
"Ruthie" . . . tremendous with a hockey stick . . . Rosie . . . Phi Psi pal . . . waiters' waiter . . . seminar in bridge . . . lesson plans for East Norriton . . . W.A.A. . . . "Sticky bun man? No, it's only George." . . . varsity basketball and tennis . . . Meistersinger's . . . Fircroft's phys-edder . . . new hair cut . . . friend forever . . . happy future with George.

FAITH LOUISE HELMLE  
"Faith" . . . candy vendor . . . J.V. hockey team . . . "fiddles" at the clarinet . . . practice teaching at Spring City . . . "Oh, Johnny!" . . . proud of her '48 Nash . . . W.A.A. . . . "Oh, bunny fuzz!" . . . totes a tray during the winter and the summer . . . Messiah . . . loves to sleep, but burns the midnight oil . . . phys-edder.

RICHARD HULTON HENNESSEY  
"Dickie" . . . psych major . . . likes his sleep . . . MSGA president . . . Bryn Mawr . . . well-dressed . . . "Daddio" of Springford . . . Demas . . . basketball . . . summers in Adirondacks . . . FTA . . . definite ideas . . . swell guy . . . Canterbury Club . . . track . . . Curtis proctor . . . "foreign women, Dick?" . . . "Mother" . . . "Thank you for the parking lot, Misga." . . . "O.K., you guys." . . . birdwalker . . . Dean's lister.



RICHARD HULTON HENNESSEY



DAVID LLOYD HEYSER

DAVID LLOYD HEYSER  
"Dave" . . . Delta Pi Sigma . . . day student, "six minutes to school" . . . "All righty." . . . hates eight o'clocks . . . French linguist . . . soccer sensation . . . "Cribbage anyone?" . . . mid-semester traveler . . . a novel a week . . . Pre-legal Society . . . "Wanta double?" . . . basketball manager . . . planning on a M.A. . . . die-hard Phillies rooter . . . Meistersingers and Messiah tenor . . . "Well, I don't know."

MAURY HOBERMAN

SUE HOLMES HOTTENSTEIN

MAURY HOBERMAN  
"Hobe" . . . pre-med prexy . . . Beardwood Chem Society . . . *Lantern* editor . . . features editor of *Ruby* . . . pseudo-intellectual . . . loin-cloth and crickets . . . Armstrong worshipper . . . brochure . . . Cecil B. DeHobe . . . "Oh, eddit." . . . four-year Stine man . . . murderer . . . misplaced Ivy Leaguer . . . week's worth of pipes . . . limited editions . . . Stuic chancellor.



SUE HOLMES HOTTENSTEIN  
"Susie" . . . from Upper Darby . . . letters from Pete . . . WAA president . . . "Wait, I'm coming!" . . . phys. ed. major . . . future teacher . . . there's that laugh again . . . "Coffee time, kids!" . . . hockey . . . tennis . . . Tau Sig . . . "Early to bed tonight?" . . . former mermaid . . . assistant flower waterer . . . "Heels or flats?" . . . great to know . . . caffeine kid.

**W. JOHN HOTTENSTEIN**

"John" . . . band prexy and director . . . Curtain Club . . . Pre-theo . . . "John the Baptist" . . . European summer . . . stuck with local girl . . . dresses like Pre-medder . . . four-year Stine man . . . proctor of Stine . . . green dodge on Third Avenue . . . "Oh, Horsefeathers!" . . . Messiah . . . Pi Nu Epsilon prexy . . . Pi Gamma Mu . . . Stuic.



W. JOHN HOTTENSTEIN

**PHILIP H. HOW**

"Phil" . . . junior, senior veep . . . two years in MSGA . . . perennial child prodigy of soccer . . . Latin??? . . . vice-president YMCA . . . pie faced for Campus Chest . . . English major . . . future sociologist and guardian of American morals . . . loyal Beta Sigger . . . "Where's my glasses?" . . . "Did I sleep through chapel again?"



PHILIP H. HOW

**LAWRENCE HYER**

"Larry" . . . "The Villanova Kid" . . . transfer student . . . bus. ad. major . . . forty-three credits of economics in two years . . . individualist . . . Dean's list to date . . . "Home for the weekend!" . . . Chess Club—one meeting! . . . "I wouldn't say that." . . . ex-music room monitor.



LAWRENCE HYER



PETER JESPERSEN

**PETER JESPERSEN**

"Casper" . . . loyal APE . . . tennis captain . . . pinned the "Great Bowman" . . . headed for Temple Med . . . "I ain't studying." . . . Florida vacations . . . "The Great Dane" . . . clean-cut kid . . . star waiter . . . been known to blush . . . "Gee Whiz." . . . famous dances at stags . . . sidewalk sleeper . . . notorious hitchhiker . . . youth personified.

DONALD GORDON JEWITT

SHIRLEY ANN JONES

**DONALD GORDON JEWITT**

"Coil" . . . Upper Darby kid . . . 303 captain . . . history major . . . known to help guys through courses . . . intramural stalwart . . . famous speeches . . . looks good in hats . . . Ursinus' Mel Allen . . . secretary of APE's . . . key lab assistant . . . dart shooter supreme . . . rolled up pegs . . . stories about the ice cream route . . . good buddy.



**SHIRLEY ANN JONES**

"Petey" . . . the tall, thin one . . . "Now, really!" . . . Fircroft's prexy . . . perpetual nap . . . "I'm just wild about Harry!" . . . let's just "skip" that . . . chauffeur of KDK . . . annual weekends at Wildwood . . . "I've got a credit card!" . . . those big blue eyes . . . humor, patience, and understanding . . . Care packages . . . sincere friend.

**H. LAWRENCE KARASIC**

"Larry" . . . Soph ruler . . . Boola-boola . . . APE . . . J.V. basketball . . . gallery viewer . . . "Hey, ice cream!" . . . El's sidekick from A.P. . . . slept through finals . . . pre-med . . . "I don't want to bust humps, but" . . . pinned to Jackie . . . "All right, John!" . . . reader . . . water skier . . . hundredth point . . . Hahnemann Med . . . large appetite.



H. LAWRENCE KARASIC

**HARVEY KATINSKY**

"The Kat" . . . 1200 on your radio dial . . . "Buy me milk and a sticky bun for when I get back from the diner." . . . "It's really muscle, Mike!" . . . "Anyone want a glass of green milk?" . . . home for the weekends . . . "I'll never eat another hoagie."



HARVEY KATINSKY

**SAMUEL CHARLES KATZ**

"Sam" . . . jazz fiend personified . . . never argues . . . bermuda shorts . . . that haircut . . . all his girls? . . . golf pro . . . "Well, I'm leaving." . . . future lawyer . . . taken for a ride during customs . . . "Hello, Doco." . . . day student . . . five pairs of white bucks . . . the profile . . . hates everybody . . . that ferschlugginer laugh . . . "You're weird."



SAMUEL CHARLES KATZ



FRANK H. KEHLER

**FRANK H. KEHLER**

"Frank" . . . Beta Sig . . . lost without Ruby . . . excellent cook . . . authority on marriage problems . . . terrific humor? . . . coal cracker . . . Spirit Committee . . . Bus. Ad. Club . . . Meister-singers . . . International Relations Club . . . Intramural sports . . . ex-dog face.

THOMAS PAUL KERR

HENRY KNABE

**THOMAS PAUL KERR**

"Tom" . . . loyal Upper Darbian . . . president of the Music Club . . . tallest in the school . . . "Y" Cabinet . . . loyal Sigma Rho . . . veep of Pre-Legal and Pi Gamma Mu . . . sincere friend . . . hails from Fetterolf . . . honorary member of Maples . . . Messiah . . . Pi Nu Epsilon treasurer . . . always hungry . . . headed for the bar.

**HENRY KNABE**

"Hank" . . . Demas . . . three years J.V. basketball . . . bus. ad. . . golf . . . runs in the sand . . . visits the "Old Mill" . . . "Where's Harry?" . . . originates from New Yoork . . . ice cream maker . . . intramural chief . . . boy-nothing of Demas . . . "Tee Hee!" . . . visitor of girls' dorms . . . Curtis complainer.







BARBARA CAROL KOCH



MARGARET KRAMER

BARBARA CAROL KOCH  
"Barbie" . . . "the Whistler" . . . *Ruby's* co-  
editor . . . "Where are the keys for Dragon?" . . .  
Tau Sig . . . "Stand at attention!" . . . *Weekly*  
staff . . . "Pokey Bear" . . . long weekends at  
home . . . "Who wants to go for pizza?" . . .  
"Always room for one more!" . . . nylon pajamas  
. . . waters flowers . . . "Gr-rrrr" . . . caffeine kid.

MARGARET KRAMER  
"Midge" . . . president of the "Y.W." . . . double  
trouble—P.K. and a twin . . . "It's not Ma-  
honey!!" . . . Sig Nu parson . . . "Say it is."  
. . . morale booster of Maples . . . Dean's lister . . .  
spots a familiar face in any crowd . . . Mexican  
hat dance . . . Meistersinger tourist . . . "I have  
to see Tom."

LEROY OLIVER KRASLEY

"Lee" . . . blond Tarzan . . . has given up 944  
. . . Pre-med . . . roommate of the golden god  
. . . football, four years . . . Delta Pi man, on  
campus . . . "Where's Scott?" . . . "Let's hit the  
Plaza" . . . "Shut the door!" . . . "Ah, Janet!"  
. . . has an eye on Temple . . . Brownback-  
Anders pre-med society . . . friend to all.



LEROY OLIVER KRASLEY



JOAN KUTZER

JOAN KUTZER

"Joannie" . . . one of Maples' ladies . . . four  
majors in four years . . . "dear mother MacCrea."  
. . . the vacant chair . . . "Is he a list boy?" . . .  
"What a schnook!" . . . Rosie bookkeeper . . .  
mademoiselle al presidente . . . George L. . . .  
"How many times?" . . . five minutes behind the  
rest of the world . . . "I can too!!"

NEIL G. KYDE

LILLIAN KYRITSIS



NEIL G. KYDE  
"Neil" . . . "Want a job fellas?" . . . Curtain  
Clubber . . . jacket super salesman . . . tennis pro  
. . . waiter's waiter . . . fourth for pinochle . . .  
annual mid-semester tours . . . Brodbeck's pro-  
ctor . . . hot rod . . . well equipped room, but  
needs his own phone . . . good music enthusiast  
. . . man with an angle . . . "Who put the cow  
in the dining room?"

LILLIAN KYRITSIS  
"Lili" . . . French enthusiast . . . "So, he goes to  
me." . . . "Uh, hum." . . . one of the Studio trio  
. . . Miss Spangler's spangle . . . "Free medical  
care, Richard." . . . O Chi . . . junior prom and  
May Queen courts . . . Anna nia . . . no eight  
o'clocks . . . "What's the latest foreign film?"  
. . . progressive jazz, D.B. . . . "Where's the food?"

**ARLIN DURRELL LAPP**

"Arlin" . . . captain of baseball team . . . Chevrolets it from Harleysville . . . Messiah member . . . Sigma Rho advocator . . . varsity club . . . never a bachelor . . . "Holy Cow!" . . . MSGA . . . has hardest courses in the school . . . one of the Meisters in the Meistersingers . . . talented turkey grower . . . "Janet's at West Chester now, but next year . . ."



ARLIN DURRELL LAPP

**DAVID M. LEIVY**

"Yule" . . . "I" before "E" except after "L" . . . mother Leivy's cooking escapades . . . Those pork chops didn't even taste like pork chops . . . pre-med society . . . collector of goose-neck lamps . . . piano virtuoso . . . beer and sticky buns . . . navy-blue khakis . . . class of '60 at Jefferson.



DAVID M. LEIVY



HARVEY MARVIN LEVIN



NANCY J. LEWIS

**HARVEY MARVIN LEVIN**

"Oi Vay!" . . . prexy of Cub and Key and Spirit Committee . . . *Ruby* editor . . . "U" with a "U" . . . Casey of the *Weekly* . . . veep of Alpha Phi Epsilon . . . U.C.'s gift to Jeff . . . other half of the gold-dust twins . . . right hand of bio department . . . part-time "Mill" worker . . . perennial Dean's lister . . . Staic.

**NANCY J. LEWIS**

"Nancy" . . . Shreiner's prexy . . . Messiah . . . "Did I leave anything in here?" . . . veep of Tau Sigma Gamma . . . camp word . . . "We're really twins." . . . a true New Yorker . . . "Oh, my goodness!" . . . "Lady Nancy" . . . busy scheduling *Ruby* pictures . . . plays piano well . . . Island Wanderers . . . phys. ed. camp '55 . . . caffeine kid.

**NESTA R. LEWIS**

Tau Sig prexy . . . Classics major . . . call for "C.S." when you page her . . . practice teacher as a senior . . . holds half the Lewis name between her . . . it's caffeine time for the flying wing . . . just mention "Dearie" and she'll sing . . . camp worder . . . island wanderer . . . P.E. minor . . . world traveler.



NESTA R. LEWIS

**EARL CLINTON LODER**

"Squirrel" . . . Alpha Phi Epsilon prexy . . . intramural wrestler . . . president of IFC . . . MSGA veep . . . "I got my Alkanes" . . . pre-med . . . "When I say I flunked, I flunked" . . . Reading farmer . . . IFC mile champ . . . big man on dishwasher . . . big time car leech . . . "I must study now" . . . ice cream man . . . odd jobs.



EARL CLINTON LODER



LAVINIA CAROL LOPER



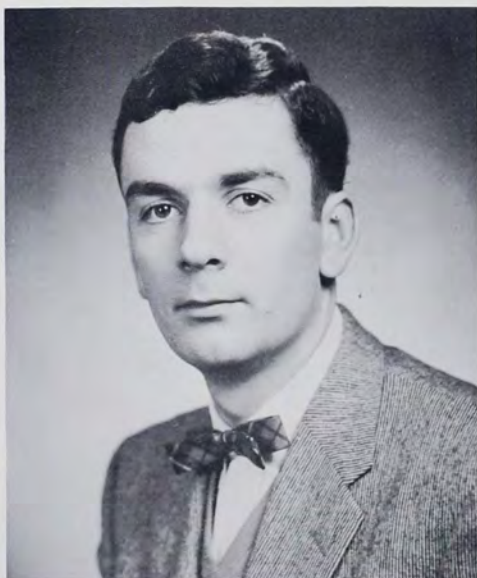
ELEANOR L. MARCON

LAVINIA CAROL LOPER  
"Carol" . . . English major . . . Glenwood's free-styler . . . dawn go-getter . . . O Chi all the way . . . "Bring me back two pretzels." . . . IRC . . . connoisseur of foreign news . . . Messiah . . . always bubbling . . . wedding enthusiast . . . Penn rooter . . . absent minded Carol . . . appreciates "Post's" jokes . . . "Oh, that's so much fun!" . . . "Where's my roommate?"

ELEANOR L. MARCON  
"Ellie" . . . summers playing golf . . . presides over 944 . . . junior prom queen . . . "Let's eat at the drug" . . . veep for O Chi . . . practice teacher who "shook" Bridgeport . . . fraternity's queen . . . heart's in Chapel Hill . . . a letter a day . . . noted for her smile . . . May Court attendant . . . charm gal . . . "Who was raising ned?"

RODERICK MATHEWSON

"Rod" . . . "Banjo" . . . "gotta study" . . . Beta Sigma Lambda . . . that walk . . . conscientious . . . always prospecting . . . those political science courses . . . nice dresser . . . library haunter . . . "I'm broke" . . . future millionaire . . . Curtis stalwart . . . "gotta ace this course."



RODERICK MATHEWSON



BARBARA ANN MAYOR

BARBARA ANN MAYOR

"Barby" . . . always ready to lend a hand . . . extra nice to know . . . Jack, Jack, Jack . . . roots for M.I.T. and Army . . . master sign painter for Glenwood's homecomings . . . future social worker . . . kindness personified . . . Messiah . . . gab sessions and tea on the third floor . . . willing and sympathetic listener.

THOMAS CARROLL McCOY

JEANNE MARIE McCURDY



THOMAS CARROLL McCOY  
"Young Tom" . . . the real McCoy . . . sanitation engineer . . . soccer player . . . veep of Demas . . . "Want to buy a Ruby?" . . . Speedy Cleaner stockholder . . . smoke Winstons . . . "Gotta get a date." . . . business administration . . . going to Harry? . . . 944 alumnus . . . the sleeper . . . "Mill" man . . . future banker . . . Devon's delight . . . "I'll ask her tomorrow." . . . Siebman . . . Stuic.

JEANNE MARIE McCURDY  
"Ginger" . . . blonde pony tail . . . ex-Bairds girl and sandwich maker . . . weekend wife . . . Dr. Heilemann's little helper . . . sews her dress two hours before the dance . . . "Junior's bound to be a genius!" . . . mad diets . . . celery cruncher . . . went O Chi . . . from McIlhenny to McCurdy . . . wonderful friend.



THOMAS J. McINTYRE



DANIEL J. McKEEGAN

THOMAS J. McINTYRE  
"Tom" . . . "Does anyone want a cup of coffee?"  
. . . didn't keep that APE pin long . . . political  
science major . . . caters to off-campus . . . extra-  
curricular activities . . . full-time jobs for four  
years . . . only guy to switch from beer to milk.

DANIEL J. McKEEGAN  
"Keegie" . . . "Let's Reading it!" . . . jaunts in  
the "calorie" wagon . . . summer school fan . . .  
A.P.O. veep . . . *Lantern* financier . . . eternal  
freshman . . . "Time, Life, anyone?" . . . guppies  
and oswald . . . "Yeah, yeah!" . . . March 17th  
performances . . . "vintage" closet . . . been  
known to collect things . . . "I'll tape it!" . . .  
water fights deluxe . . . "Where's Bear?" . . .  
Stuic.

RICHARD BARRY MILLHAM  
"Goofer" . . . psychology major . . . future person-  
nel manager . . . intramurals . . . secretary-treas-  
urer chess team . . . Dean's list . . . hard worker  
but likes to relax . . . reserved stool at Rocco's  
. . . driver of the "Blue Beetle" . . . sack artist  
deluxe . . . "What's up, jelly roll?" . . . second  
home, 108 Curtis.



RICHARD BARRY MILLHAM



JEAN E. MOORE

JEAN E. MOORE  
"Jean" . . . one of the Glenwood crew . . . likes  
to cut up . . . takes a kidding . . . "My face is  
always red." . . . band member . . . Alpha Sigma  
Nu . . . famous last words—"I'll get more done  
in the library." . . . Dutchman, and proud of it  
. . . Ursinus mermaid . . . "Anyone for pizza?"  
. . . "Victory."

JOANN A. MYERS

PAUL NEBORAK

JOANN A. MYERS  
"Jody" . . . Phi Psi prexy . . . contagious laugh  
(and cough!) . . . four year majorette . . . Fir-  
croft forever . . . "Come here once." . . . Pi  
Gamma Mu . . . Dean's list . . . all day in the  
Supply—working or bridge? . . . mascot of Beta  
Sig . . . history prof at Rittenhouse . . . West  
York accent . . . "Down by the Perk." . . . sin-  
cerity plus.

PAUL NEBORAK  
"Rookie" . . . ec. major . . . football quarter-  
back and captain . . . "fat knees" . . . b-ball  
co-captain . . . baseball . . . junior class prexy  
. . . Cub and Keyer . . . city boy . . . "Nebor and  
Stip" . . . loyal APE . . . pinned to Lil . . .  
"stoppers" . . . never gets rattled . . . no vices  
. . . been known to make a speech . . . "All-uke"  
. . . great guy.



JOSEPHINE A. NEFF

"Jo Anne" . . . sly sense of humor . . . confidante to all at Hobson . . . sweet and sincere . . . midnight coffee break . . . historian with side order of lit . . . sunny disposition . . . infrequent but intense smoker . . . midnight open house . . . "Tennent, anyone?" . . . blue eyes, brown hair, and dimples . . . mouse hunts by moonlight . . . Pogo enthusiast.



JOSEPHINE A. NEFF

PETER NEMPHOS, JR.

"Pete" . . . day student from Norristown . . . former Stine resident . . . chem. major . . . conscientious student . . . third floor Pfhaler, second home . . . dependable . . . Greek scholar . . . quiet and retiring . . . must get some work done . . . future plans include further work in chemistry.



PETER NEMPHOS, JR.



HAZEL K. OKINO



RONALD P. OWEN

HAZEL K. OKINO

"Haz" . . . Tau Sig . . . "Toad" . . . practice teacher . . . Yost disciple . . . "44" . . . FTA veep . . . WAA . . . "Bambino" . . . Weekly staff . . . Ruby write-ups . . . past Tau Sig, FTA money minder . . . "Where are you?" . . . Shreiner third floor . . . "I can't see!" . . . phys. edder at heart . . . "Best roommate Polly ever had!"

RONALD P. OWEN

"Rowen" . . . future chemist? . . . those early ten o'clocks . . . breakfast once a semester . . . "Where's Berg's Inquirer?" . . . one of the basketeers . . . pizza tonight? . . . advanced inorganic for hours . . . Demas from way back . . . afternoons in lab . . . Sturgis six times a week . . . spends summers in the mountains . . . "You're right!"

NANCY LOU PAINE

MARJORIE A. PARKHURST

NANCY LOU PAINE

"Nance" . . . two majors—bio. and pre-min. . . P.K. . . KDK chaplain . . . "Don't tell me!" famous phone calls . . . rooms with Ann and Midge . . . practice teacher . . . loyal friend . . . gives good advice . . . "Mm-m, chocolate ice cream!" . . . summers at Mensch Mill . . . brown hair, blue eyes . . . "Oh, Fudge!" . . . Rimby's convert.



MARJORIE A. PARKHURST

"Margie" . . . "Let's go for pizza." . . . one of the four "A's" . . . summer school and Ocean City for vacations . . . curious . . . "Oh, no!" . . . lovely legs . . . "I've gained a pound!" . . . Vive O Chi . . . "I'm starved." . . . Messiah . . . English major . . . "I can't help it, I hate bugs!" . . . philosophy courses for hours.



**DONALD S. POLIWODO**

*"Don"* . . . one of Michigan's better immigrants . . . "Where's Africa?" . . . timely comments . . . appreciative audience for jokes . . . sharp dresser.



DONALD S. POLIWODO



JOHN A. POLTO

**JOHN A. POLTO**

*"Knuckle"* . . . four-year Stine man . . . Pre-Med Society . . . prexy of Newman Club . . . Louella Parsons of Stine . . . Mediterranean dignitary . . . "I suppose you think that's funny." . . . "You'll all burn!" . . . "I'll lose it in the summer" . . . Book-of-the-Month-Club . . . Dean's other list . . . Chapel enthusiast?



JANET E. PRATT



JOSEPH M. PROSPERO

**JANET E. PRATT**

*"Jan"* . . . last of big three . . . dorm alarm clock . . . "Bridge?" . . . "Drug, Lou?" . . . "Did I get any mail?" . . . first lady of Bancroft . . . future in medical social work . . . New York twang . . . Meistersinger tours . . . Messiah . . . Curtain Club . . . "Oh, my calve's foot jelly!" . . . beyond the next hill . . . a sincere friend.

**JOSEPH M. PROSPERO**

*"Joe"* . . . "Piasan" . . . chem. major . . . Delta Pi Sigma . . . Beardwood Chemical Society . . . physics courses for hours and hours . . . "Remember mother's spaghetti dinners and the vino?" . . . member of I.S.C.C. . . . graduate school bound . . . the Chevrolet kid . . . Bill Stout's replacement on third floor Pfahler . . . "You're on your own, Dad."

ELEANOR ANN RAPP

EARL JOHN REHMANN

**ELEANOR ANN RAPP**

*"Teddy"* . . . Clamer's gift to the phys. ed. world . . . chief fire warden . . . science fiction fiend . . . "Candy, anyone?" . . . student teaching . . . specialist on drums, cymbals, guitar, and lemmy sticks at 2 A.M. . . . light sleeper???. . . KDK . . . transportation—horses and "Matty" . . . Eat, drink, and be merry for tomorrow ye diet.

**EARL JOHN REHMANN**

*"Spider"* . . . Sig Rho's former minutes man . . . IRC . . . manages Little League Team . . . Pi Gamma Mu . . . daily letters to and from Douglass . . . veteran J.V. basketball benchesitter . . . pinned to Flea . . . "International Harvester" . . . big ec. man . . . Ruby business staff . . . South Jersey rebel with orange hat . . . "Call me for supper."





RONALD JOHN REINHARDT



JOHN ROHLAND

RONALD JOHN REINHARDT  
"Ron" . . . loyal Beta Sig supporter . . . "lost" his pin . . . money bags for the Curtain Club . . . frustrated athlete . . . three year band man . . . one year football . . . "Dad" of the Fircroft girls . . . part-time Harry James . . . what a lip . . . Supply Store student manager . . . always smiling . . . personality plus.

JOHN ROHLAND  
"Erfie" . . . one of Demas' old men . . . memories of Okinawa . . . one of Bosie's boys . . . tossed with the best at the Nest . . . managed the grapplers . . . transferred to and from the army . . . "Let's go to Roc's!" . . . bass in Messiah and Meistersingers . . . future in business . . . sack-out artist.

MYRON E. ROSENFELD  
"Mike" . . . "Now I've read Romer fourteen times." . . . letters from Ruth . . . biology lab assistant . . . "I've switched to Rocco's." . . . Cheese-Whiz enthusiast . . . loves his pork chops rare . . . iron man; tried to eat three zeps . . . future McConnely . . . home for the weekend . . . pre-med. society . . . class of '60 at Jefferson.



MYRON E. ROSENFELD



HARVEY I. SALWEN

HARVEY I. SALWEN  
"Harv" . . . Beta Sig treasurer . . . sportsman . . . "Little hunting?" . . . "Coat tonight?" . . . really hitting today . . . "Licensed?" . . . IFC . . . brand new bucks, too . . . base weekend . . . Dodgers fan . . . room's a mess . . . "It tickles." . . . Musketeer . . . "Wake me for Chapel!" . . . 104 club . . . L.A.M. . . . "Movies tonight?"

BARTON SCHLEGEL

CAROLL LEE SHAW



BARTON SCHLEGEL  
"Bart" . . . vet from Japan and Korea . . . family man . . . FTA . . . Beta Sig.



CAROLL LEE SHAW  
"Shaw" . . . "La femme pre-med" . . . "They should've told us!" . . . KDK enthusiast . . . Day Study sec'y-treas. . . . "My beloved Temple!" . . . Messiah . . . "The ballet's in town!" . . . ever onward . . . circulates between day study and Pfahler's upper floors . . . delightful nature . . . impish smile . . . that daily jaunt to Norris-town . . . Brownback-Anders . . . stalwart friend.

**E. KENNETH SHELLY**

"Ken" . . . faithful French Clubber . . . one time *Weekly* staff . . . French Club money man . . . English major . . . darn that Philosophy . . . just an antiquarian at heart . . . one time FTA member . . . "Let's drug it!" . . . seldom misses a Saturday sale . . . they're so educational . . . "Breakfast? Perish the thought!" . . . "Oh, for Ocean City."

**THEODORE GEORGE SHOLL**

"Ted" . . . loyal Demas supporter . . . head waiter . . . co-captain and third baseman for "Siebman" . . . '36 Chevie . . . dorm rowdy . . . transfer from U. of Florida . . . plays uke . . . *Ruby* sports editor . . . intramural whiz . . . "Whooo?" . . . "What are you dressed as?" . . . nice guy . . . duets with "Coil" . . . shoots fair darts . . . O.K., fellows! . . . "Who stole my car keys?"



E. KENNETH SHELLY



THEODORE GEORGE SHOLL



JOSEPH DAVID SHRAGER



NANCY ANN SHUMAKER

**JOSEPH DAVID SHRAGER**

"Joe" . . . "manager shrager" . . . member of the "Horsey" set . . . never study for a Bosie test! . . . George Kell posthumously . . . roach killer the hard way . . . flame thrower . . . Med., then 50,000 per . . . love that Necturus . . . follower of Green . . . "I burned my notes!" . . . "Any Scotch tape?" . . . "Shut up, Rhodi!"

**NANCY ANN SHUMAKER**

"Nance" . . . transfer from Penn Hall Junior College . . . three years Clamerite . . . history major . . . Phi Psi girl . . . coffee at the drug . . . "Wake me up in time for dinner!" . . . allergy plus . . . "You know what?" . . . poetical moods . . . the future looks brighter . . . a true friend.

**J. EDWARD SINGER**

"Ed" . . . business administration . . . Delta Pi Sigma secretary . . . the Blue Beetle . . . local farmer . . . flaming red hair . . . weekends at N.A.S. Willow Grove . . . member of I.S.C.C. . . . "I never had public speaking, but . . ." . . . "Let's have a stag!" . . . one of Sam's brothers . . . "Put out those cigars!" . . . dear John.

J. EDWARD SINGER



EMMA JANE HULTON SMITH

**EMMA JANE HULTON SMITH**

"Hutton" . . . English major . . . Meistersingers . . . perennially pleasant . . . student activity calendar—plenty of activity . . . Dean's lister . . . "All I need is a couple of hour's sleep!" . . . Those long walks at the shore . . . day study veep, prexy, and WSGA rep. . . Phi Alpha Psi . . . Curtain Club . . . Yost fan . . . early morning laughter.







NOBLE M. SMITH



PHILIP M. SMITH

**NOBLE M. SMITH**  
*"Preach"* . . . Delta Pi Sigma president . . . Chi Alpha president . . . "cabbie from Conshy" . . . "I'll have a coke" . . . Canterbury Club president . . . seven years bad luck . . . parliamentarian of IFC . . . debating club . . . *Ruby* business manager . . . "that beautiful black Olds" . . . hopes to follow Dr. Baker's philosophy . . . Divinity School after graduation.

**PHILIP M. SMITH**  
*"Phil"* . . . president of Zeta Chi . . . "The Quiet Man" . . . York Fair promoter . . . cool words of wisdom . . . inter-fraternity track's Jim Thorpe . . . basketball . . . illustrious bus. ad. major . . . blue denim jacket with D.L.S. on the back . . . Luckies taste better . . . "See you at ten-thirty." . . . hard worker, good friend.

**ROBERT H. SNYDER**

*"Herb"* . . . keeps wampum for Sig Rho . . . big (?) ec. man . . . "Snerb Hyder" . . . been seen at Nick's . . . darts . . . bus driver from Pennsburg . . . IRC . . . hobby, irking Vinton . . . big "Club" member . . . late to rise . . . owns wheels . . . soph ruler . . . insurance agent . . . frat contact man . . . a late dater . . . Sam's boy.



ROBERT H. SNYDER



PHYLLIS M. STADLER

**PHYLLIS M. STADLER**

Tau Sig member . . . W.A.A. too . . . "Queenie's her name, so's Phyllie Lou." . . . at camping, she's "Cookie" . . . saw white deer . . . when something evaporates, she's always near . . . ask her about golf, she knows the course . . . if there's cars on the track, she's trouble's source . . . P.E. major . . . sports . . . neat dresser.

JOAN ELAINE STAHL

VIRGINIA L. STECKER

**JOAN ELAINE STAHL**

*"Joanie"* . . . Spanish major . . . Glenwood beauty . . . loyal O Chi'er . . . c'est la vie . . . "I'm not getting up!" . . . Messiah . . . vivacious personality . . . "Did I get a letter?" . . . language fanatic . . . "Wait 'til I tell you." . . . "Oh, Carol!" . . . the Marinés have landed . . . "Did you see my diamond?"

**VIRGINIA L. STECKER**

*"Ginny"* . . . phys-edder . . . Glenwood gal . . . varsity mermaid—backstroke champion . . . WAA . . . co-owner of the Glenwood menagerie . . . Tau Sig . . . Susie's twin . . . "She's engaged!" . . . plans to change her name to Griffin . . . home every weekend . . . "We'll never make breakfast!" . . . "What'll I wear?" . . . loved teaching the third graders.





ALVIN C. STIPA



STEPHANIE STONEBACK

ALVIN C. STIPA  
"Stip" . . . ardent APE supporter . . . football . . . the "toe" . . . baseball backstopper . . . day student . . . pinochle occasionally . . . "stoppers" in the day study . . . Stip and Nebor . . . another city boy . . . "Compound Mother Fletcher's" . . . been seen in Curtis . . . "It's a drill job" . . . pinned to Shirley . . . ec. major . . . intramural basketball . . . Varsity Club veep.

STEPHANIE STONEBACK  
"Steve" . . . from Springtown, small town girl and proud of it . . . phys. edder . . . one of the Glenwood crew . . . ex-prexy . . . "What'll I wear?" . . . swimming manager . . . loves mail from Milwaukee . . . Alpha Sigma Nu . . . seldom found on weekends . . . band member . . . Glenwood's food store and post office.

JOHN B. STRICKLER  
"John" . . . bus. ad. major . . . day student . . . WWII Navy vet . . . likes ping-pong . . . sports enthusiast . . . golf addict . . . married . . . delights in entertaining young daughter . . . HiFi bug . . . collects phonograph records . . . partial to Benny Goodman and Andre Kostelanetz.



JOHN B. STRICKLER



NANCY RUTH SUTLIFF

NANCY RUTH SUTLIFF  
"Nance" . . . one of the Glenwood crew . . . French major . . . famous last words—"I'll see you at breakfast." . . . Alpha Sigma Nu . . . Wilcox fan . . . specializes in "Welcome Alumni" signs . . . library veteran . . . pet peeve, people who slam doors . . . senator . . . "Tommy is *not* rat eaten!" . . . junior advisor . . . "Victory."

GEORGE SWARTZ

THOMAS L. TARMICHAEL



GEORGE SWARTZ  
"Bull" . . . ZX treasurer . . . "The coal miner" . . . "Go on, goon" . . . "Who, me?" . . . football . . . Dean's list . . . three-year kitchen vet . . . "Night train" . . . always seen with V.I. and Bull, Jr. . . . the bull is dead . . . bus. ad. . . hell raiser first class . . . Pi Gamma Mu . . . future C.P.A.

THOMAS L. TARMICHAEL  
"Speedy" . . . pre-dent . . . "Not another head gasket!" . . . day study card shark . . . one of Sam's boys . . . Delta Pi Sigma . . . "Give me a birch!" . . . outboard king of the Schuylkill . . . pre-med society . . . Pottstown's movie magnate . . . going on a diet? . . . nasty break . . . goes for Ohio women . . . experiment 10-B.

PAULINE A. TAYLOR

"Polly" . . . "Oh, tale of woe" . . . all sports . . . "Olay, for Tau Sig!" . . . FTA . . . "Taylor tribe" . . . softball captain . . . "sage" . . . practice teacher . . . "It really evaporated; it wasn't me!" . . . phys. edder . . . "tinted ice" . . . May Day clown . . . "Best roommate Hazel ever had!"



PAULINE A. TAYLOR

CONSTANCE E. THOMAS

"Connie" . . . Glenwood's first lady . . . "But, Hope, it's too dark to get up!" . . . high-stepping majorette . . . "Bridge, anyone?" . . . "Vive O Chi!" . . . "Let's eat, gang!" . . . "Another meeting?" . . . "Who has my mail?" . . . gotta have some coffee . . . Supply supporter . . . "Where's my roomie?" . . . "Look what I got on sale!"



CONSTANCE E. THOMAS



CHARLES B. TRICEBOCK



WILLIAM S. TUCKERMAN

CHARLES B. TRICEBOCK

"Chuck" . . . president of Sig Rho . . . one time baseballer . . . president Pi Gamma Mu . . . IRC . . . soccer co-captain . . . frequent napper . . . IFC . . . three year sweater supplier . . . big ec. man . . . soph. ruler . . . "You guys!" . . . never mind . . . wheels . . . prefers married life to stag . . . A's fan . . . "Why?" . . . darts . . . has been to Nick's.

WILLIAM S. TUCKERMAN

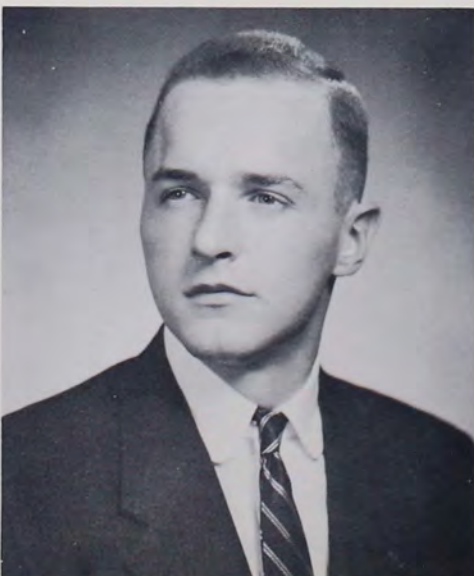
"Tuck" . . . business administration . . . veep Delta Pi Sigma . . . "Baldy" . . . "the green dragon" . . . "Shift into high, you dog!" . . . the mad electrician . . . member of I.S.C.C. . . one of Sam's brothers . . . "When is our next stag?" . . . ex-Dean's lister . . . Republican from Plymouth Meeting . . . "Got to shine my cordovans" . . . IFC.

WILLIAM FREED TULL

ERIC HUGO VOLLMER

WILLIAM FREED TULL

"Shaker" . . . ardent APE . . . co-captain of cheer leaders . . . lifeguard captain . . . "Let's drug it for a cup of coff" . . . master musician . . . clarinet wizard . . . Bermuda . . . grad. school bound . . . sports convertible . . . chauffeur to Florida . . . transfer from Penn State . . . Dixieland . . . known to hustle . . . "I had a buyer" . . . shoots lousy darts . . . prom chairman . . . individualistic.



ERIC HUGO VOLLMER

"Eric" . . . hails from Johannesburg, South Africa . . . day student . . . two more years at U. of P. . . What? . . . "That doesn't make me mad!" . . . future engineer . . . Mutt and Jeff . . . "Oh, my!" . . . Transvaal cowboy . . . "Oh, oh, my name is on the board!" . . . Delta Pi's treasurer . . . loves to dance . . . "Some day."

MARYLOU WADLEIGH

"Lou" . . . cute blond . . . English major . . . quiet but mischievous . . . Alpha Sigma Nu gal . . . swimming team . . . summers in O.C. . . . whiz on water skis . . . Messiah . . . one of the Glenwood crew . . . pet peeve, 6:30 a.m. . . . rooter for Pennridge . . . craving for bologna (Lebanon) . . . can't live without that Ford . . . "Victory."



MARYLOU WADLEIGH

BARBARA A. WAGNER

"Barbie" . . . English major . . . co-owner of the Glenwood menagerie . . . Supply store bridge fiend . . . FTA prexy . . . KDK . . . "Drug tonight, Maryhelen?" . . . "Wake me up for breakfast." . . . wears a Penn State "bug" . . . plans for the future with "Wimpy" . . . "I have so-oo much to do!" . . . Plymouth-Whitemarsh teacher . . . professional knitter.



BARBARA A. WAGNER



LOIS A. WEHMEYER



ANN WERTZ

LOIS A. WEHMEYER

"Lois" . . . soprano from Buckingham . . . KDK . . . "I'm hungry!" . . . Messiah Chorus, Chapel Choir, secretary and soloist for Meistersingers . . . coiffure du moyen age . . . "It's an antique." . . . ec. major filling in with lit courses . . . refreshing point of view . . . "Really?" . . . cheerful and candid . . . "I'll be back on Monday morning."

ANN WERTZ

"Ann" . . . ruler of Maples' ladies . . . French 12 and Polish 1 . . . "There's no coal under Frackville." . . . "What's your trouble, Bubble?" . . . hysterious psychic powers . . . "Tender!" . . . "Is he a list boy?" . . . "Well, Chickadees." . . . "Where did you get those dimples?" . . . hikes to Gratersford . . . Rosie . . . guardian of Sig Nu's treasury.

ANNE REYNOLDS WEVER

M. LOUISE WHITE

ANNE REYNOLDS WEVER

"Annie" . . . rebel hailing from Chicago . . . loyal Studio resident . . . mad chef, "Frise pomme a l'orange" . . . English major . . . "Oh, that Italian literature!" . . . "Big term paper due tomorrow." . . . a winning smile . . . "Where's Humpty?" . . . strenuous workouts on the piano . . . "I'm ready." . . . off to the big city . . . Miss Spangler's girl Friday.



M. LOUISE WHITE

"Lou" . . . commuting resident . . . Messiah . . . KDK kid . . . "What happened at the meeting?" . . . Blue Moon . . . "Any mail?" . . . Mrs. S.'s prism breaker . . . "Make me study!" . . . one of those crazy psych majors . . . weekend waitress . . . features for the Weekly . . . five foot ten in flats . . . from sheepskin to gold bars.





WILLIAM JAMES WHITE



ALBERT HAMPTON WILSON

WILLIAM JAMES WHITE  
"Willy" . . . four years Messiah . . . *Inquirer* weekends . . . "Y" retreat handy man . . . tall, quiet man of wisdom . . . blood mobile chairman . . . never sleeps . . . charter member APO . . . frustrated psychology major . . . chapel choir . . . "Lend me a dime for coffee" . . . two years 724 . . . five books per week . . . next editor of *Inquirer*.

ALBERT HAMPTON WILSON  
"Bart" . . . senior class treasurer . . . track captain . . . Demas secretary . . . bus. ad. major . . . Ridgewood express . . . golf addict . . . Jack's brother . . . *Ruby* staff . . . uke player . . . terrible voice . . . "Any requests?" . . . "Debit or credit?" . . . "Buy pontiacs!" . . . cuts Harry frequently . . . midnight makeup . . . pinned to "Boo" . . . flash cards . . . O.C. summers . . . Speedy Cleaner stockholder . . . Stuic.

EILEEN KINDERMAN WILSON  
"Mrs. Wilson" . . . keeps house in Schwenksville . . . ex-Bairds gal . . . Demas' queen . . . closet smoker . . . "I'm letting my hair grow." . . . five brothers and one brother-in-law . . . talks in her sleep . . . May Day and Junior Prom court . . . O Chi . . . freshman romance . . . lost all her 12:30's . . . Suzy to some.



EILEEN KINDERMAN WILSON

JOHN WESLEY WILSON  
"Jack" . . . "Chief Pontiac" . . . Bart's brother . . . Eileen's husband . . . Demas veep and philosopher . . . a real salesman . . . always leads the opposition . . . dreams of a Fairhorn Flyer . . . ec. major who loves his French . . . Arctic kid . . . bounces out of bed . . . poops out at ten p.m. . . Bongo . . . always a quick answer . . . "Don't be silly!"



JOHN WESLEY WILSON

ELLIOTT WINOGRAD

SAMUEL YANKELOWITZ

ELLIOTT WINOGRAD  
"El" . . . soph. ruler . . . captain J.V. basketball . . . Gallery pres. . . APE brother . . . summers on the grains . . . digs the Plaza cat . . . trips with Cavaliers . . . biology major . . . water skiing at Capt. Jack's . . . cocktail hour at the Inn . . . future driller . . . matinee lover . . . Boola's sidekick . . . caught Miami . . . "She's really fine" . . . large appetite.



SAMUEL YANKELOWITZ  
"Yank" . . . "Going home for a good meal!" . . . "High foreheads show intellect!" . . . "Buy Yank's cows." . . . Blanche's boarder . . . ext-rumpeter . . . "How 'bout that?" . . . "Let's push this 36 bid." . . . dresses well . . . knee operation? . . . pre-med society . . . "Tsp, tsp!" . . . summer mold counter . . . true Bridgeton man . . . Curtain Clubber . . . jazz enthusiast . . . "Hope the Ford makes it!"

# PERMANENT CLASS OFFICERS



RAY DRUM  
President



KATHLEEN FRETZ  
Secretary



PETE EARLE  
Loyalty Fund Chairman



HARVEY LEVIN  
Reunion Chairman



*From Matriculation,  
through Concentration,  
toward Graduation*



*Undergraduates*





# JUNIORS

It seems like only yesterday that the class of 1957 entered Ursinus College. Everything was all very new to us and many looked with apprehension at the long four year climb ahead. Dick Hummel, our Freshman president, organized the class and soon we were a working unit of Ursinus. Our first dance, "Ebb Tide," was very well received.

The coming of the Sophomore year brought many new responsibilities to the class. The Frosh were met with customs administered by "Fragile Agile Ann" Schick and "Bruno" Briner. The class, under the leadership of Joe Donia, presented two dances for the enjoyment of the entire campus, "Fantasy in Fire" and "The Shamrock Shuffle." In presenting these two events the class showed its high degree of cooperation and a well-integrated division of labor. It was at this time that the Class of 1957 acquired its name, "The Successful Radicals," for time and time again they were proving that they could take unusual challenges and successfully integrate them into the social life of the college.



With the coming of the Junior year, the class attained visions of an even brighter future. Under the leadership of president Joe Donia, vice-president Lee Lawhead, secretary Bonnie Weiler, and treasurer Dick Winchester, the Class of 1957 presented the fall spectacular, "Starlight on the Seas." Again our unusual talents for decorations were proven as we transformed the interior of the gym into a luxurious ocean liner. Our Junior Prom, "Blossom Time," held at Sunnybrook Ballroom, proved to be a successful stopping point for our Junior year, and promised still brighter hopes for the future.



JOE DONIA, President



LEE LAWHEAD, Vice-President



BONNIE WEILER, Secretary



DICK WINCHESTER, Treasurer



At the doorway to Brodbeck we find Bob Slotter, Dick Weber, John Nothelfer, and Dick Padula.



Bill Shearer, Dave Dickson, Bill Rheiner, Dean Bankert, Skip Ruth, and Al Ritchey engage in a Derr Hall bull session.



203 Curtis, the habitat of Jack Schumacher, Dave Burger, and Don Sowers.



Ismar Schorsch, Bob Marsden, Ron Kline and Dave Mayberry relax in the Day Study.



The meeting place of June Boeninghaus, Roxie Albertson, Georgie Bryson, and Marilyn Welsh, is the foyer of the library.



Emma Bell, Mary Jo Turtzo, Betty Macan, and June Davis meet in the library.

# JUNIORS



Les Applegate, Dave McLaughlin, and Roy Green on Main Street, Collegeville, Pennsylvania.



Three Sig Rho men, Joe Donia, George Budd, and Dick Winchester, pose in front of Fetterolf Hall.



Long hours in Comparative Lab are spent by Phil Kivitiz, Bob Grenitz, Randy Petersohn, and Dick Goldberg.



Sunshine and relaxation are enjoyed by Sonnie Kruse, Fay Whitehead, Bennetta Thacher, and Doris Lockey.



Gladys Hansen, Elaine Garrison, Rose Marie Swallick, Janet Miller, and Irene Kelley leave Shreiner Hall.



The steps of Freeland provide a resting place for Allan Frank, Larry Foard, Fred Kurkowski, and David Rosser.

# JUNIORS



A quick game of bridge is played by Pat Dandrea, Barbara Olmo, Marilyn Kuebler, and Lois Sutton.



Priscilla Messenger, Nancy Evans, Pat Jones, and Nancy Shronk are caught in a moment of relaxation in the Day Study.



It's the "drug" and Reds Condie, Harry Toy, Walt Larkin, Dave Mayberry, Tom Sloss, Hootie Hauser, and Don Fleming.



Dick Heydt, Don Knauf, Dick Briner, Charlie Moehs, Bob Winterbottom, and George Browne in Phaler Hall.



Dick Brocksbank, Bud Walker, Bruce Holcombe, and John Scofield pause on the steps of Freiland.



Helen Balthaser accompanies Nancy Strode, Ruth McKelvie, Joan Finney, and Gail Coombe.



From Brodbeck to classes go Mike Crane, Bob Engel, Art Arena, Dick Hause, and Joe Atkins.



It must be good news for Jack Townsend, Jerry Nunn, Doc Carver, Charlie Law, and Dave Subin.



A moment of relaxation in Shreiner with Marion Brown, Bonny Weiler, Helen Stevenson, Eileen Conner, Bobby Schweiker, and Betty Hunsburger.



Ann Schick, Sue Dawson, Carol Krohn, Dotty McKight, Mary Lou Adam, Betty Tayes, and Vonnie Gros douse Connie Cross.



Pre-Medders Spike Foreman, Karl Herwig, and Scott Taylor are visited in laboratory by business major Dick Hummel.

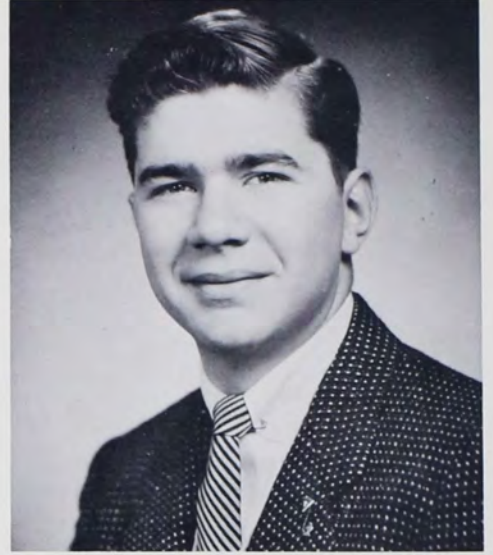


Jane Dunn, Joan Bradley, Marge Struth, Joan Clement, Kay Kerper, and Lucy Fay enjoy an afternoon on the porch of Hobson.



Delores Lamm, Bobbie Hunt, Wes Schwemmer, Gail Auchenbach, Barbara Althouse, and Jean Moore relax in front of South Hall.

# SOPHOMORES



BILL CONNELLY, Vice-President



AGGIE WATSON, Secretary



JOHN IDLER, Treasurer



### SOPHOMORE CLASS

*First Row:* Rohm, Roedel, Perlman, Cuthbert, North, Connelly, Redden, Idler, Blood, Nelson, Hader, Wendel, Rybal, DeLuca, Shinehouse. *Second Row:* Gotshalk, Murry, Brown, Mowrey, King, Martin, Justice, Farese, Royer, Woodbury, Rawcliffe, Shultz, Jewett, Shelly, Nembach. *Third Row:* Dryfoos, Reiffing, Gray, Gilgor, Abrahamson, Cole, Letterman, Britton, MacGregor, Stuebing, Moyer, Berlin, Katinsky, Bonn. *Fourth Row:* Carino, Spencer, Syvertsen, Stanton, Puleo, Sangree, Marsella, Martyn, Cording, Berger, Biddle, Seyler, Kulp, McKey. *Fifth Row:* Nemphos, Zanger, Lord, Famous, Buggeln, Zargowsyk, Weand, Miller, Haines, Reid, Todd, Quinn, Powell, Rogers. *Sixth Row:* Seip, Stuba, Hartgen, Carter, Leger, Schoonmaker, Palmer, Petraitis, J. Miller, Hesperheide, Molitor, Fenstermacher, Gingerich, Livingston. *Seventh Row:* Pauli, Price, Bartholomew, Stevenson, Heller.



HAL REDDEN, President

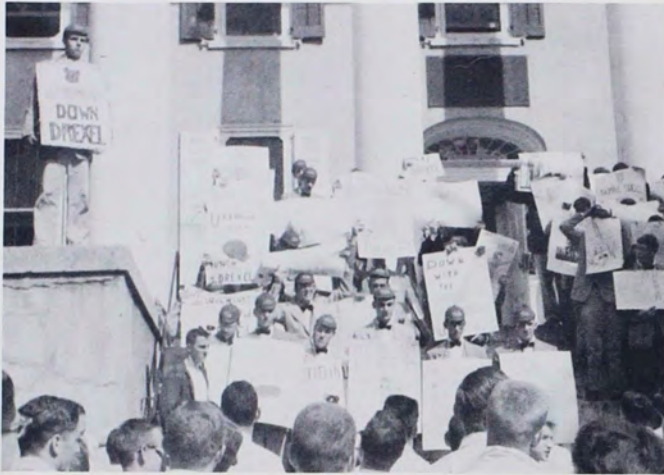


The sophomore class started out the year with its new officers, Hal Redden, Bill Connelly, John Idler, and Aggie Watson, presiding. Freshmen customs were our first hurdle, but our Soph rulers, led by Rene Rawcliffe and Lee Rigler, made sure that the Frosh stayed in bounds and it was soon over. Next we tackled our two

big dances of the year, Le Chat Noir, and the Soph Hop. How can we forget that male chorus line at Le Chat Noir? It turned out to be one of the best dances of the year. And so the class of 1958 concluded another successful year.



# FRESHMEN



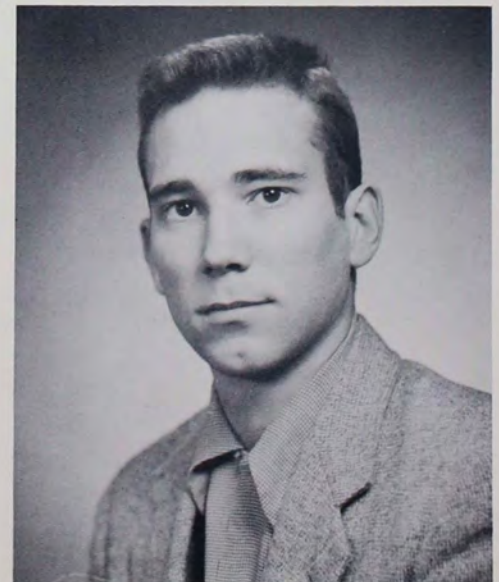
BARRY DEMPSEY, Vice-President



PAULINE REID, Secretary



RUDY DIPPL, Treasurer



"We are the lowly Frosh of old U. C." and we were officially greeted by "radiant, regal royal Renie" and "Mr." Rigler. Will we ever forget the Mexican Hat Dance on the steps of Freeland after the Susquehanna victory or our somber looking faces at step shows or the frosh banquet when our president Ben Hauser introduced the other officers Barry Dempsey, Pauline Reid and Rudy Dippl? The Christmas banquet, "Red Riot," and the spaghetti dinner are all unforgettable memories.

With such a good start we frosh are looking forward to three more wonderful years at Ursinus.



BEN HAUSER, President



FRESHMAN CLASS

*First Row:* Hinkle, Robinson, Spencer, Meier, Fisher, Stitley, Buxton, Kern. *Second Row:* Cross, Lefever, Swan, DeGeorge, Piper, Dempsey, Reid, Houser, Dippl, Saywer, Alexander, Bentz, Deryder. *Third Row:* Wagner, Maestrelli, Castor, Menkus, Smith, Haines, Martella, Kane, Rewalt, Dietrich, Waite, Lim, Blew, Wolff. *Fourth Row:* Hill, Anderson, Mercer Dietrich, Ottaviano, Evans, Jacobs, Ruth, Williams, LeCato, Leinbach, Catlett, MacCalmont. *Fifth Row:* Castor, Strunk, Anderson, Caldarone, Gobrecht, Gilbach, Carroll, Celis, Malick, Glauser, Shellenburger, Bretzger, Fogel, Williams. *Sixth Row:* Bover, Spare, Bellairs, Spangler, Gilmore, Blakney, Brenner, Gehret, Follet, Achey, Tucker, Yerkes, Ervin. *Seventh Row:* Batchelor, Daniels, Davis, Kriebel, Phillips, Trauger, Robeson, Parker, Rhodes, Christ, Rishaw, Johanneson,

Bond, Gotshalk. *Eighth Row:* Schreiner, Soper, Hartzell, Thomas, Strasser, Owen, Skinner, Crozier, Patterson, Burhans, Meitzner, Robbins, Irwin. *Ninth Row:* Zall, Paine, Schumacher, Jeffers, Meier, Ladov, Drewniak, Wilson, Carney, Preston, Cardona, Setzler, Burns. *Tenth Row:* Thomas, Brocksbank, Lebengood, Emenheiser, Custer, Royle, Roebacher, Colbert, Bushey, Haag, Carpenter, Wilson, Perfetti. *Eleventh Row:* Schaefer, Eichert, Wheeler Vye, Loney, Angstadt, Adams, Schmoyer, Lefever, Harmon, Eddy, Alberts, Gilbert, Williamson. *Twelfth Row:* Clisby, Benson, Constantine, Wagman, Backer, Clair, Kenney, Lashendok, Godley, Muth, Joiner, Carnson, Maddock, McCabe, Neely, Laird, Barbour.



*To those who Criticised,*

*to those who Compromised,*

*to those who Organized.*



*Organizations*



W  
S  
G  
A



WOMEN'S STUDENT GOVERNMENT ASSOCIATION

Front Row: King, Hain, Frantz. Rear Row: Jones, Struth, Blood, president; Stevenson, vice-president; Jewett, secretary; Tayes, treasurer.

MEN'S STUDENT GOVERNMENT ASSOCIATION

Reeves, Beemer, Lapp, How, Herwig, vice-president; Hennessey, president; Blood, secretary-treasurer; German, Zall, Glauser, Perlman.

M  
S  
G  
A



# Senate

The Senate is the legislative branch of the W.S.G.A. It is composed of representatives from the girls' dormitories, various organizations and activities on campus, and the president and vice-president of the W.S.G.A. The senators, with the help of Miss Stahr, act on problems arising in the dorms and revise the Student Government rules.

## SENATE

*First Row:* Stevenson, Mowrey, Bryson, Connor, Brown, Davis. *Second Row:* Auchenbach, secretary; Blood, president. *Third Row:* Jewett, Sutliff, Evans, Seip.



# Hall Presidents

The Hall Board is the judiciary branch of the W.S.G.A. The dormitory presidents, chairman of the freshman customs committee, and the officers of the Student Council are members. The Hall Board enforces the rules and deals with the offenders of College regulations and Student Government rules.

## HALL PRESIDENTS

*First Row:* Jones, Lewis. *Second Row:* Wertz, Thomas, Frantz, Pratt. *Third Row:* Marcon, Garlich, Welsh.



This year the Sophomore Rules Committee was led by Lee Rigler and Irene Rawcliffe. The step shows, although not very comfortable for the freshmen, were most entertaining for the upperclassmen. The discipline administered to the girls in S-12 was also very well handled. The committee, whose work was approved by the student governments, had a very successful season.

## SOPH RULES COMMITTEE

*Kneeling:* Freshmen Wolf and Robbins. *Sitting:* Watson, Reeves, McGregor, Rawcliffe, Jewett, Heller, Rigler, Royer, Woodbury, Grundy, Struth, Frantz. *Standing:* Redden, Idler, Price, Blood, Buggelin, Brittain, Spangler, Stuebing, Perlman, North.

# Soph Rules

# RELIGIOUS GROUPS

"In the Christian way of life" the YM-YWCA combines religious fellowship, social service, international study, and campus responsibilities. Through such activities as the bloodmobile, marriage seminar, Bible study group, Vespers, Fall and Spring retreats, and sponsorship of the Rec Center, the "Y" continues to reach each and every one on the entire campus.

To provide supplementary Christian fellowship Chi Alpha, the Canterbury Club, and the Newman Club offer inspiring programs to Ursinus students.



## Y Officers

## YM-YWCA Cabinet

### "Y" CABINET

*First Row:* Heinrichs, Wertz, Bean, Kruse. *Second Row:* Weiler, Leger, secretary; Cross, co-vice-president; Ely, co-president; Kramer, co-president; Winchester, co-vice-president; Schellhase, adviser; King. *Third Row:* Carpenter, Boeninghaus, Redden, Rheiner, Kerr, How, Atkins, Berk, Stevenson.





# Chi Alpha

## CHI ALPHA

Paine, Bean, Althouse, Shellhase, adviser; Smith, moderator; Kramer, Hottenstein, Hause, vice-moderator; Budd, treasurer.

# Newman Club

## NEWMAN CLUB

*First Row:* Follet, DeGeorge, Schaefer. *Second Row:* Claire, McKeegen, Perfetti, Polto, president; Hartgen.

# Canterbury Club

## CANTERBURY CLUB

Smith, president; Grigger, Bistremovitz, Earle.





# Who's Who

GEORGE AUCOTT



ROBIN BLOOD



MARILYN DURN



WAYNE ENGEL



TERRY GERMAN



JEAN HAIN



RUTH HELLER



RICHARD HENNESSEY



MARGARET KRAMER

HARVEY LEVIN



NANCY LEWIS



NESTA LEWIS



PAUL NEBORAK





# Cub and Key

## CUB AND KEY SOCIETY

Neborak, treasurer; German, secretary; Levin, president.

The Rosicrucians is an organization composed of women whose average for four semesters has been 87.5 or better. During the year, the Rosicrucians have at least two social functions for the purpose of welcoming new members into the group, usually a tea in the Fall and a doggie roast in the Spring. Miss Blanche Schultz is advisor for the group. Although a high average is required for admission, "Rosies" have many interests and are generally to be found in all sort of campus activities.

The Cub and Key Society is an honorary society giving recognition and honor to the male leaders of the campus. The purpose of the society is to stimulate the male students to become worthy sons of Ursinus by encouraging their participation in and support of extra-curricular activities, by promoting among them a desire to achieve high scholastic standing, and by fostering respect for and observance of all college regulations.

# Rosicrucians

## ROSICRUCIANS

Messenger, Kerper, Kutzer, secretary-treasurer; Carson, president; Durn, Adams, Bean.



# Alpha Phi Omega

Alpha Phi Omega, national service fraternity, is an organization whose purpose is to assemble college men in the fellowship of the Scout Oath and Law, to develop friendship, and promote service to humanity. It has begun a project of improving the College woods. Spare time is spent in improving the campus for future years. When called upon, the organization aids the faculty and student body in various ways.

## ALPHA PHI OMEGA

McKeegan, vice-president; Kivitz, Dickson, Obold, Grenitz, treasurer; Tull, Ruth, Schearer, president; Lubking, Kattinsky.



# Pi Gamma Mu

Pi Gamma Mu is the national honorary social science society whose lifetime members have maintained a "B" average in twenty hours of social studies courses. The society's selectivity can be attested by its small membership. The highlight of the society's year is the Spring banquet. Traditionally, a person prominent in the social studies field speaks at the banquet.

## PI GAMMA MU

Jewitt, Koch, Rehmann, Tricebock, president; Kerr, vice-president; Fisher, Schorsch, Hottenstein.



Pi Nu Epsilon is a newly organized national honorary music fraternity of the Gamma chapter. Under its president John Hottenstein, the group's main purpose is to further musical activities on campus. The group aspires to found an orchestra on campus and perhaps to assist in accompanying the Messiah Chorus. At present Pi Nu Epsilon has a small membership which may increase in the future.

## PI NU EPSILON

Hottenstein, president; Jones, Althouse, Kerr.

# Pi Nu Epsilon

# Chapel Choir

The chapel choir, under the direction of Dr. W. F. Philip, is a voluntary group of students which lends its talents to the chapel services throughout the week. The group has a total membership of thirty students from all classes.

## CHAPEL CHOIR

*First Row:* Wehmeyer, Grigger, Althouse, Miller, Condon, Bean, Pratt. *Second Row:* Todd, Peters, Mowrey, Sangree, Stitley, Schulz, Mack. *Third Row:* Fogal, Miller, Miller, Kerr.



# Quartet

The quartet is a familiar group on the Ursinus campus. This year the members were Tom Ely, Peter Earle, Conrad Hoover, and Tom Kerr. The group sang the favorite ballads and barber shop harmony which are traditional of Ursinus quartets. This year the quartet's goal was to travel with the Meistersingers on their annual spring tour.

## QUARTET

T. Kerr, C. Hoover, P. Earle, T. Ely.



The Meistersingers is a musical organization conducted by Dr. W. F. Philip. This term there were approximately 50 members who practiced weekly under their student director Floyd Berk.

The Meistersingers' annual Spring concert tour took them to various schools and churches throughout Harrisburg, Baltimore, and Washington, D. C. Also, in accordance with tradition, the group presented its annual spring concert.

## MEISTERSINGERS

*First Row:* Brown, Mowery, Connor, Kerper, Wehmeyer, Hartgen, Kelly, Moehs, Phillip. *Second Row:* Hottenstein, Finney, Jones, Sutton, Stewart, Royer, Bradley, Furlow, Ziegler, Bryson, Cherry. *Third Row:* Ervin, Grigger, Althouse, McKey, Jewett, Pratt. *Fourth Row:* Earle, Ely, Hoover, Kerr, Ruth, Lapp, Holcombe, Adams, Fogal.

# Meistersingers



# The Ruby

The 1956 *Ruby* is a big book because there are many events, big and small, which we will want to remember when we are a long time removed from our carefree college days. The book took a great deal of work to prepare and many people, led by co-editors Barbara Koch and Harvey Levin, were involved in making it what we hope will be a success.

Ursinus life is casual and friendly, and we have tried to capture and preserve that spirit of camaraderie in our informal *Ruby*.

We have dedicated our book to those we feel are the real backbone of Ursinus—the students. By observing the student at work and at leisure, we hope we have caught more than a little of the spirit of Ursinus.

## EDITORIAL STAFF

*Co-Editors*.....Barbara Koch and Harvey Levin  
*Art Editors*.....Nesta Lewis and Beverly Bowman  
*Photography Editors*.....Nancy Lewis and Bart Wilson  
*Clubs and Feature Editors*

Maury Hoberman and Jody Myers

*Sports Editors*.....Ruth Heller and Ted Sholl  
*Senior Write-up Editors*...Hazel Okino and Karl Billman  
*Proof and Typing Editors*...Jean Hain and Hope Coburn

## BUSINESS STAFF

*Co-Business Managers*...Terry German and Noble Smith  
*Concessions*.....Paul Graf and Earl Rehmann  
*Subscriptions*.....Tom McCoy  
*Patrons*.....Lillian Bistremovitz  
*Advertisements*.....Bob Constable and Pete Earle  
*Activities*.....Vinton Fisher and Connie Thomas



HARVEY LEVIN AND BARBARA KOCH  
Co-Editors



EUGENE MORITA  
Photographer

## EDITORIAL STAFF

*First Row:* Hain, Myers, Lewis. *Second Row:* Bowman, Coburn, Lewis, Heller, Okino. *Third Row:* Wilson, Sholl, Hoberman, Billman.





NOBLE SMITH AND TERRY GERMAN  
Co-Business Managers

EVERY DOLLAR HELPED!



MORE COKES, MORE RUBYS!



THEY SOLD WHAT YOU READ.



**BUSINESS STAFF**

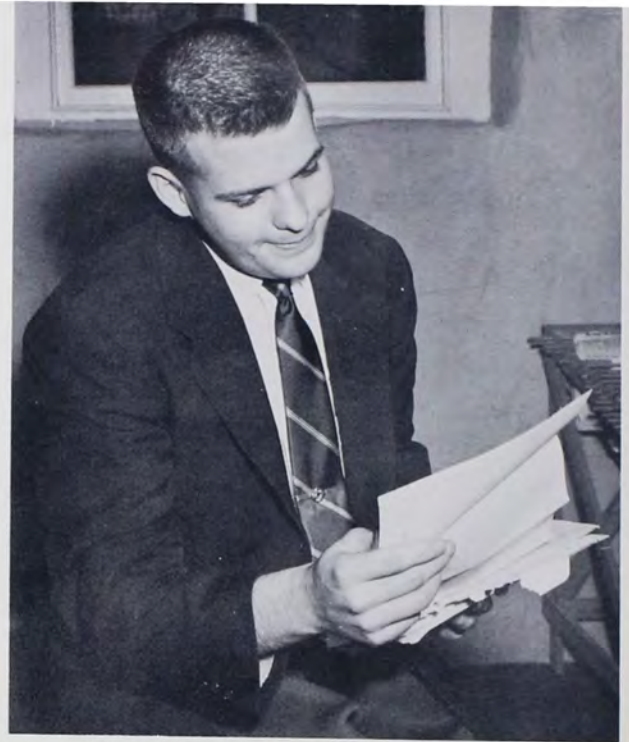
*First Row: Barron, Bistremovitz, Thomas. Second Row: McCoy, Fisher, Rehmann, Earle, Graf, Constable.*

# The Weekly

Alarmed by the poor reputation of the *Weekly* on campus, the editorial staff this year did their utmost to improve the lot of the campus newspaper. The size of the *Weekly* was increased to six columns and the troublesome six-page paper was eliminated. This improvement allowed for more adequate coverage every week. A new editorial policy called for a weekly editorial and a "Letter to the Editor" column. Other improvements this year include an addressograph machine for the circulation staff, renovation of the *Weekly* office, a better grade of paper and the use of a newer press.

## WEEKLY STAFF

*Editor-in-Chief*.....Richard Winchester  
*Managing Editor*.....Spencer Foreman  
*Assistant Managing Editor*.....Barbara Koch  
*News Editor*.....Harvey Levin  
*Feature Editor*.....Ismar Schorsch  
*Sports Editor*.....Jack Townsend  
*Headline Editors*.....Margaret Kramer and Ann Wertz  
*Associate Editors*.....Terry German, Ann Leger,  
 David Hudnut, Constance Cross  
*Circulation Manager*.....Janet Miller  
*Photographer*.....Barbara Schweiker



DICK WINCHESTER  
Editor-in-Chief



ERIC DUCKWORTH  
Advertising Manager



## WEEKLY EDITORIAL STAFF

Levin, news editor; Townsend, sports editor; Schweiker, photography editor; Winchester, editor-in-chief; Leger, associate editor; Foreman, managing editor; Duckworth, advertising manager; German, associate editor; Schorsch, feature editor.

# The Lantern

This was a rather good year for *The Lantern*. The whole magazine was renovated. Attractive covers, more readable print, and more interesting layouts enhanced the magazine. Even more important was the improvement in the quality of the material published. Excellent poems, short stories, and essays filled the magazine in three of the largest issues since its origin. There were occasional splashes of wit which added to the greater acceptance by students and faculty. This year's *Lantern* has set a precedent to which we know the future staffs will adhere.



MAURY HOBERMAN  
Editor-in-Chief



DANIEL McKEEGAN  
Business Manager

EVERY COPY WAS CAREFULLY EDITED.



## LANTERN STAFF

*Editor*.....Maury Hoberman  
*Art Editor*.....Ann Leger  
*Business Managers*

Dan McKeegan and Jeanne Moore  
*Editorial Board*.....Barry Bressler, Lawrence Foard, Spencer Foreman, Harold McWilliams, Loretta Marsella, Rosemarie Puleo, W. Scott Taylor, Bert Wendel

## EDITORIAL STAFF

Foreman, Foard, Puleo, Leger, Hoberman, editor; Taylor, Moore, McWilliams, McKeegan, Wendel.





# Brownback-Anders Pre-Medical Society

These are the men and women who are often seen walking around campus in white lab jackets. They are the professional men of the future. At the Brownback Anders Pre-medical meetings they are introduced to recent developments in the healing arts by noted men in various fields. Among this year's guest speakers were a cardiologist, a physical therapist, a neurosurgeon, an ophthalmologist, and an internist. More than seventy members attended the pre-medical conference at the Jefferson Medical College. Tours were also made of the Wyeth Laboratories penicillin plant and the Lankenau Hospital.



DR. WAGNER WITH PRESIDENT MAURY HOBERMAN.

## SENIORS

*First Row:* Goldfine, Hoberman, president; Dr. Wagner, Durn, Shaw, Grigger, Cranston, McKeegan. *Second Row:* Tarmichael, Winograd, Levin, German, Polto, Shrager, Yankelowitz, Brown, Constable, Karasic, Leivy, Rosenfeld, Kraslcy, Loder.



THE BROWNBACK-ANDERS  
PRE-MEDICAL SOCIETY.



MARLETTE ALLEN, Co-President; DR. ROGER P. STAIGER, Adviser; PAT CONDON, Co-President.

## Beardwood Chemical Society

The Beardwood Chemical Society, at its opening meeting heard Dr. Russell and Dr. Beecham from National Lead Co. speak on "The Chemistry of Organotitanium Compounds." Throughout the year the society has heard speakers from various laboratories in this vicinity and has taken two plant trips, one of which was to the Anchor Hocking Glass Co., N. J.

The year's activities were completed with the society's annual banquet where the alumni told of their activities.

Beardwood's main project this year has been the completion of a card catalog for the chemical library on the third floor of Pfahler Hall of Science.



### SENIORS

Nemphos, Prospero, Grieser, Allen, Grigger, Condon, Owen.

### BEARDWOOD CHEMICAL SOCIETY

*First Row:* Nemphos, Prospero, Wolff, Grigger, Condon, co-president; Dr. Staiger, adviser; Allen, co-president; Bentz. *Second Row:* Grieser, Owen, Malick, Meier, Biddle, Dodig, Johansson, Fisher, Houser.



# Pre-Legal Society

At the Pre-Legal Society's meetings during the year, the members were afforded the opportunity to hear and meet prominent lawyers and officials of the various law schools. They benefited from trips and advice about requirements for matriculation in professional schools. The year was highlighted by a dinner-dance.

## PRE-LEGAL SOCIETY

Durr, Mayberry, Hamilton, Heyser, Leger, Blood, Engel.



# French Club

A Parisian atmosphere descended upon the Ursinus campus each time the French Club assembled. Trying to become better acquainted with the French culture and language, the club sponsored such activities as French plays, song fests, and travelogues. Among the highlights of the year were the French motion picture, the Christmas party, the social at Dr. Garrett's home, and the farewell banquet.

## FRENCH CLUB

Georgoris, Leger, Kyritsis, Shelley, Kutzer, president; Kuebler, Sutliff, Kelley, Hill.

The International Relations Club introduced a new policy of more avid student participation. Speakers gave first hand accounts of the international scene. A real boon to discussion was the return of Dr. Eugene Miller from Japan. Active participation in a model United Nations climaxed a very succesful year.

## INTERNATIONAL RELATIONS CLUB

First Row: Snyder, Tricebock, Hamilton, vice-president.  
Second Row: Earle, Heyser, Rehmann, Rosenberg, Fisher, president; Dr. Miller, Leger, secretary-treasurer; Schofield, Barndt.



# I.R.C.

# F.T.A.

Under the supervision of Mr. J. A. Minnich, the Future Teachers of America experienced another successful year. The officers of the year were Barbara Wagner, president; Hazel Okino, vice-president; Anne Schick, treasurer; and Marylou Adam, secretary. At the first doggie roast, members gave a skit lighted by flashlights. At monthly meetings, members heard many prominent educators of the area speak and saw educational movies. Ursinus is represented in the South Eastern District of the F.T.A.

THE FUTURE TEACHERS OF AMERICA



## Stuics

Although still an infant, this organization has had its effects on the college campus. It has tried to bring a more casual rather than sloppy appearance to the dress of the student. The group is also an eating club. Through their dinners they have been able to develop better student-faculty relationships. The organization is made up of Junior and Senior men.

### STUICS

*First Row:* Herwig, Hoberman, Brown, Constable. *Second Row:* Wilson, McKeegan, Billman, Levin. *Third Row:* Foreman, McCoy, German, Hottenstein.



Recognized for the first time in an Ursinus yearbook, the waiters form an integral part of the Ursinus culture. Presently, there were forty waiters and fifteen students working behind the scenes. Senior Ted Sholl and junior Dick Padula were the head waiters. Pictured here are the senior waiters.

### SENIOR WAITERS

Durn, Becker, Kutzer, Sholl, DeOlden, Wertz, Helmle.

## Senior Waiters

# Alpha Psi Omega

According to their motto "humble artistry," the nine members of the Delta Tau Chapter of Alpha Psi Omega, national honorary dramatic fraternity, display their talents. To wear the blue and gold is to be recognized for outstanding all-around interest and service in Ursinus dramatics. Alpha Psi functions in two ways: as experienced individual guides to Curtain Club activities and as a body participating in advanced dramatic work, such as television presentations. Seniors Gwenn Bream and Pat Condon were formally initiated in January; a reception at Superhouse followed. Spring initiations climaxed the year in May.



JACK CRANSTON  
President of Alpha Psi Omega



## ALPHA PSI OMEGA

Front Row: Brown, Cranston, president;  
Jones, Allen. Second Row: Hector,  
Hunt, Millward.





FRANK BROWN  
President of The Curtain Club

# Curtain Club

This year the Curtain Club created quite a stir on campus when it presented the fantasy, "The Mad Woman of Chaillot." This unusual, provocative play was directed by H. Lloyd Jones, faculty director, and Richard Hector, student director. In addition to the full major production this year, the group staged two one-act plays, a television play, and a religious play in conjunction with the YM-YWCA. The club concluded the year with the annual Spring comedy on May Day weekend.



## CURTAIN CLUB

*Sitting:* Kuebler, Allen, Brown, Reinhardt, Petraitis, Vye, Condon, Moore, Foard, Robacker, McKey, Hector, Heinrichs, Cross. *Standing:* Leger, Millward, Pratt, Garrison, Cranston, president; Hunt, Perfetti, Terry, Gobrecht, Dixon, Tull.



*o parties*

*Attended,  
to voices that Blended  
to friendships*

*Unended*



*Sorority-*

*Fraternity*







INTER-SORORITY COUNCIL

Front Row: Bistremovitz, Heinrichs, Lewis, president; Durn, vice-president; Myers, secretary-treasurer; Davis. Rear Row: Lewis, Marcon, Schick, Condon.

# Inter-Sorority Council

# Inter-Fraternity Council

INTERFRATERNITY COUNCIL

First Row: McCoy, Smith, Loder, president; Scofield. Second Row: Bankert, Salwyn, Donnelly, Smith, Tricebock.





**ALPHA PHI EPSILON**

*Side Row:* Fleming, Condie, Stipa, Winograd, Heydt. *Kneeling:* Neborak, Edson, Spampinato, Colameco, Jewitt, recording secretary; Hodgson, corresponding secretary; Levin, vice-president; Loder, president; Carver, treasurer. *Third Row:* Shinehouse, Gros, Padula, Subin, Karasic, Slotter, Famous. *Fourth Row:* Nunn, Law, Cranston, Jespersion, Tull, Larkin, Townsend, Hartman.



The brotherhood of Alpha Phi Epsilon is unsurpassed in fellowship, leadership, and versatility. The social calendar for the year included several typical APE stags and two successful open parties. Emma Bell was the fraternity's Homecoming Queen, who reigned over the traditional Old Timers' Day party at the Old Mill. The fall rushing party was a real blast and the "Turkey Trot" was an enjoyable evening for the entire student body. The fabulous Spring rushing party and the annual dinner dance were highlights of the Spring semester.



**ALPHA PHI EPSILON**

# BETA SIGMA LAMBDA



Brotherhood is the keynote of Beta Sig's success. Beta Sig opened its social activities with a cocktail party on Homecoming Day. The fraternity began something new in social activities by having a costume party with a "roaring Twenties" theme. At Christmas the brothers and Omega Chi gave a party for the orphans at Womelsdorf. The Spring rushing stag was a memorable event. Brothers joined Delta Pi in March in presenting a dinner and dancing party. The social activities were concluded by the dinner dance in May.



## BETA SIGMA LAMBDA

*First Row:* Drum, president; Bankert, vice-president. *Second Row:* Reinhart, Graf, Minter, secretary; Ciliberti, Sawyer, corresponding secretary. *Third Row:* Hamilton, Fry, Duckworth, Applegate, Green, Kehler, Brosius, Dunnington. *Fourth Row:* Heller, Nixon. *Fifth Row:* Mathewson, Kershner, Brown, Constable, Berk, Salwen, treasurer.





**DELTA MU SIGMA**

*First Row:* Engel, treasurer; Donnelly, president; Billman, corresponding secretary; McCoy, vice-president; B. Wilson, secretary; Hennessey. *Second Row:* Otts, Chern, Sholl, Sella, Crigler, Owen, S. Taylor. *Third Row:* Nodhelfer, Knabe, Jackson, Lord, Reid, J. Taylor, Grundy, Redden, J. Wilson, Schumacher, Hassler, Roland, Herwig. *Sitting:* Sower, Berger.

Delta Mu Sigma, better known as Demas, spent a prosperous and eventful year under the capable leadership of Harry Donnelly. The close-knit organization made possible Demas' share of successful social functions—ones which will be long remembered. With the new members looking forward to fraternity trips, and especially initiation, the seniors waited for the last big fling, the dinner-dance on June 1.



**DELTA  
MU  
SIGMA**





**DELTA PI SIGMA**

*First Row:* Krasley, Montgomery, Vollmer, treasurer; Smith, president; Tuckerman, vice-president; Singer, secretary; Tarmichael. *Second Row:* Seabock, Zern, Hritz, Walker, Heyer. *Third Row:* Mogee, Hector, Miller, Mayberry, Marstella, Marsden, Slawewski, Litka, Miller, Schorsch, Tompkins.

In the realm of service, Delta Pi sponsored a Hallowe'en Party for the Christ Home orphanage. At Christmas, the fraternity with Alpha Sigma Nu sorority gave a party at Rivercrest Preventorium. Socially, Delta Pi began the year with the customary Homecoming Day dinner at Lakeside with Mary Jo Turtzo as Queen. New Year's Eve saw a party at the Bridge Hotel; whereas second semester witnessed an open stag and a combined party with Beta Sigma Lambda fraternity. The formal dinner dance in May brought the year to an impressive close.



D  
E  
L  
T  
A  
  
P  
I  
  
S  
I  
G  
M  
A



## SIGMA RHO LAMBDA

"Memories ever bind us" . . . A busy year began with "The Opener." Joining with Phi Psi, Sig Rho gave two parties for the children of Christ's Home. The annual Homecoming Dinner was held at Peacock Gardens with Phyl Stadler as Fraternity Queen. The *Sigma Rho Alumni Newsletter* was published. The group joined with Tau Sig in presenting "The Snowball." Finals were "celebrated" at the Poconos. Brothers completed a successful year with a memorable dinner-dance at the beautiful Doylestown Country Club.

### SIGMA RHO LAMBDA

*First Row:* Fisher, Tricebock, president; Snyder, treasurer; Earle, vice-president; Donia, recording secretary; Connelly, corresponding secretary; Scofield. *Second Row:* Ritchey, Holcombe, Roedel, Hutchko, Ruffing, Reeve, Marshall, Idler. *Third Row:* Gray, Lapp, Kerr, Spangler, Budd, Walker, Brockshank, Dryfoos, Dickson, Rehmann.





# Z E T A C H I



Zeta Chi is a brotherhood fostering fellowship and loyalty. This is exemplified in the many functions in which brothers engage. The fraternity is composed of twenty-six members with varying talents and active in extra-curricular activities. This year Zeta Chi presented Mike Pedicin to Ursinus College. In the spring, the brothers and their "sisters" of Tau Sigma Gamma conducted an Easter Egg Hunt for the underprivileged children of Pottstown. The traditional dinner-dance climaxed another chapter in the annals of Zeta Chi.



## ZETA CHI

*First Row:* Lawhead, secretary; Schwartz, treasurer. *Second Row:* McGregor, German, Smith, president. *Third Row:* Zanger, Arger, Brittain, Rigler, North, Crane, Perlman. *Fourth Row:* Blood, Knauf, Rogers, Rohm, Rybak, Briner, Frank, Ruth, corresponding secretary.





**ALPHA SIGMA NU**

*First Row:* Kramer, Wertz, treasurer; Bryson, secretary; Bistremovit, president; Boeninghaus, corresponding secretary; Heinrichs, vice-president. *Second Row:* Hartgen, McKelvie, Balthausen, Lockey, Thacher, Whitehead, Finney. *Standing:* Leger, Seip, Welsh, Strode, Glodfelter, Kulp, Coombe, Stoneback, Carter, Sutliff, Schoonmaker, Moore, Wadleigh, Fretz, Coburn.



**ALPHA SIGMA NU**

Sigma Nu girls have pleasant memories of many good times together: the welcoming of sisters and sponsors to the Homecoming Luncheon . . . Halloween Party for children at Christ's Home with Delta Pi . . . addition of eleven sisters to the crew . . . formal initiation and dinner at the Nest . . . at Christmas time—a children's party with Delta Pi for Rivercrest, followed by dinner and dancing . . . Lakeside dinner before the Lorelei . . . bowling parties . . . colored eggs and the Easter bunny at Rivercrest . . . dinner-dance at Brookside and the weekend in Ocean City climaxed the year.







# KAPPA DELTA KAPPA

## KAPPA DELTA KAPPA

*First Row:* Krohn, treasurer; Schwemmer; Jones, Faust, secretary. *Second Row:* Albertson, Allen, president; Condon, vice-president; Hartlieb, secretary. *Third Row:* Davis, Keebler, Wehmeyer, White. *Fourth Row:* Althouse, Bean, Hespeneide. *Fifth Row:* Shrank, Auchenback, Lamm, Garlich, Rapp. *Sixth Row:* Murray, Shaw, Evans, Schick.



The spirit of Kappa Delta Kappa can be seen as the girls form the friendship circle to sing the sorority song, "Friends, friends, friends, we will always be . . ." This friendship was carried on through the various activities: Old Timer's Day luncheon at Lakeside . . . annual orphanage party . . . trips to the theater . . . sorority weekend in May . . . the annual dinner-dance at Phoenixville Country Club . . . a spring get-together with the alumnae.



# OMEGA CHI

## OMEGA CHI

*First Row:* Brown, recording secretary; Weiler, treasurer; Marcon, vice-president; Durn, president; Thomas; Frantz. *Second Row:* Bell, Burns, Frew, Parkhurst, Baron, Carson, Stahl, Dandrea. *Third Row:* Spencer, Macan, Carino, Turtzo, Wilson, Livingston, Berry, McKey, Loper, Bowman, Cherry, Becker, Schweiker, Kruse.



"O Chi, hats off to you," and thus ends another wonderful year for Omega Chi. Remember: the Old Timer's Day luncheon at Lakeside . . . O Chi's four Homecoming Queens . . . the rushing party at Wagner's . . . the welcoming of eight new members . . . the Christmas party with Beta Sig for the Bethany orphans . . . the dinner before the Lorelei . . . the cranberry bomb . . . Easter favors for the Heart Institute . . . fabulous shore weekend . . . and the finale, the dinner dance. What more to say, but one last "Vive O Chi."

# PHI ALPHA PSI

Personality, Ambition, Loyalty, and Scholarship . . . the Pals will remember: the Homecoming Luncheon at Moorehead's . . . candle ceremony at the rushing party . . . welcoming of thirteen "bermuda-clad" members . . . Christmas *Alumnae Newsletter* done at Martha's . . . closed party at Spring City . . . Thanksgiving and Spring parties at Christ's Home . . . bowling parties and the waffle party at the Eachus' home . . . the great weekend at the shore, and that perfect ending to a perfect year—the dinner dance. Thus the true P-A-L spirit binds the members of Phi Alpha Psi together.

## PHI ALPHA PSI

*First Row:* Bowman, Jones, corresponding secretary; Davis, vice-president; Myer, president; Bream, treasurer; Olmo, secretary; Heller. *Second Row:* Sutton, Ziegler, Cummings, Molitor, Berger, Dawkins, Watson, Smith. *Third Row:* Biddle, Miller, Stanton, Fenstermacher, Gingerich, Ames, Swallich, Shumacher, DeOlden, Forman.



# TAU SIGMA GAMMA

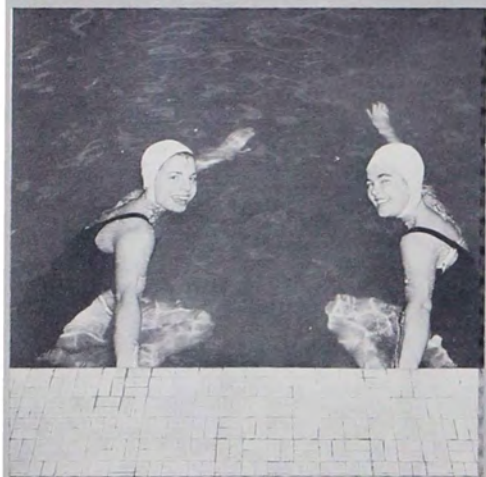
Girls who "Go Tau Sig Way" find that they have many wonderful activities to remember: rushing, hectic but successful as eleven new members joined the ranks; the "Snowball," a wonderful open party co-sponsored with Sig Rho; Easter Party with Zeta Chi for orphans; the annual dinner-dance at Brookside, and the weekend of sun and good times at the shore. Alumnae return for the Old Timer's Day luncheon and the annual Christmas luncheon in Philadelphia proving that "Tau Sig Spirit never dies."



## TAU SIGMA GAMMA

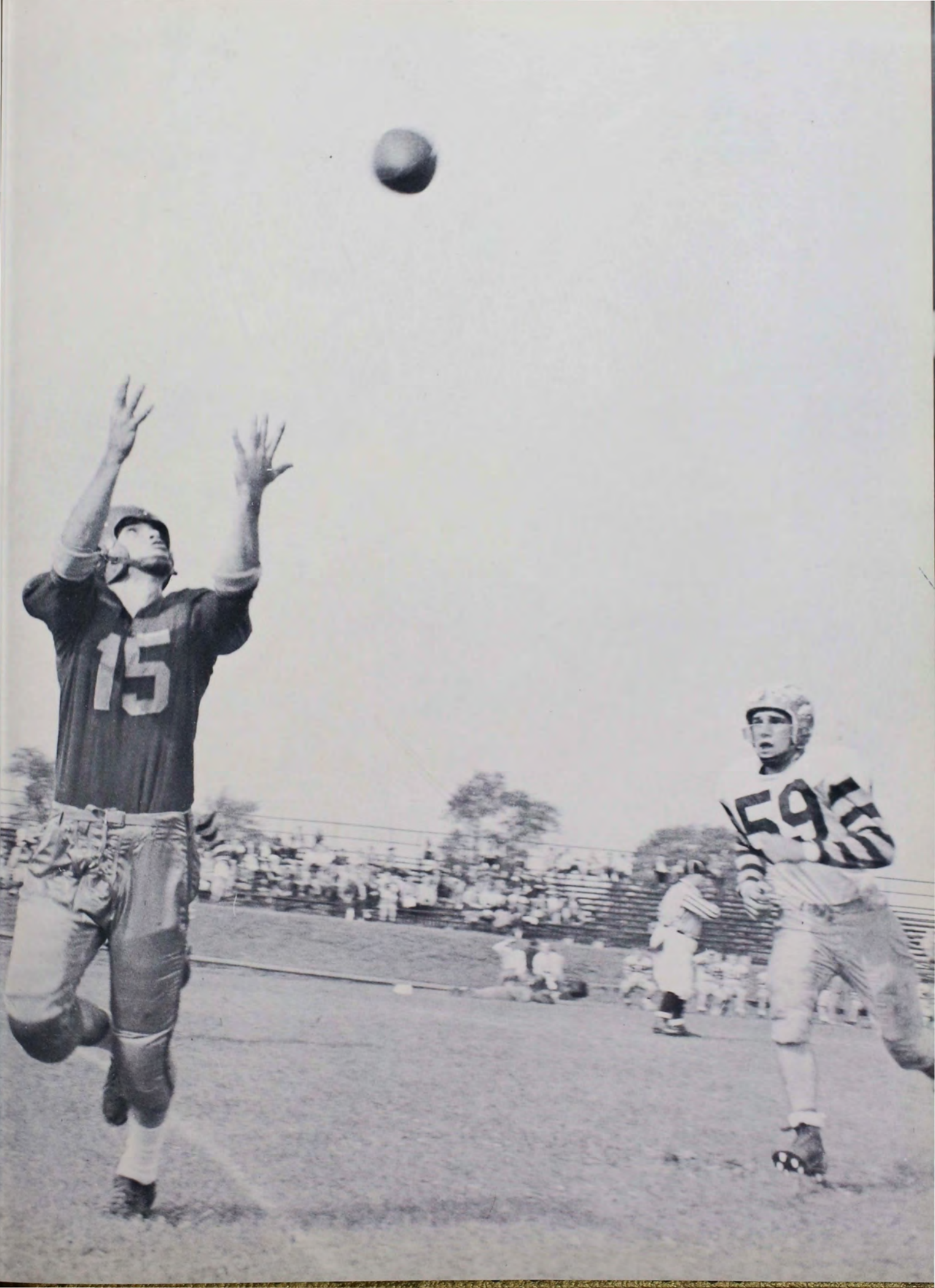
*First Row:* Martin, Lewis, president; Tayes, treasurer; Connor, secretary; Lewis, vice-president; Struth, corresponding secretary; Okino. *Second Row:* Adam, Gros, Dunn, Bradley, Hain. *Third Row:* Stecker, Stevenson, McKnight, Cross, Hottenstein, Bauser, Koch. *Fourth Row:* Woodbury, Justice, Schultz, Royer, Clement, Taylor, Farese, Stadler. *Fifth Row:* Jewett, Rawcliffe, Mowery, Blood, King, Shelly.





*To a moment  
of Fame,  
to a winning Game,  
for our Ursinus  
College Name*

*Athletics*





**VARSITY CLUB**

*First Row:* Rohm, Neborak, Famous, Sella. *Second Row:* Ruth, Rheiner, Knauf, Slotter, secretary; Donnelly, president; Stipa, vice-president; Krasley, Sholl, Nunn. *Third Row:* Frank, Briner, Lapp, Brittain, Engle, Applegate, Shumacher, Burger, Bugellin, Weand, Lawhead, Grundy, Cilliberti, Wilson, McCoy, Heyser, Tricebach, Heydt.

The Varsity Club is composed of the men of Ursinus who have earned varsity letters. The purpose of the club is to increase the scholarship standards of Ursinus athletes and to make the granting of varsity letters an event of honor.

# Varsity Club

# W.A.A.

**WOMEN'S ATHLETIC ASSOCIATION**

*Front Row:* Tayes, Adam, Dawkins, Stadler, McKnight, Cross. *Second Row:* Fay, Rawcliffe, Woodbury, secretary; Dunn, vice-president; Hottenstein, president; Justice, treasurer; Bauser, Heller, Taylor.

The Women's Athletic Association instilled a new extensive program this year. This included a Pocono camping trip, a benefit show with the Varsity Club, and scheduled bi-monthly meetings, complete with refreshments. Dues were collected and membership cards issued to all who earned their fifty points. This program resulted in a widespread expansion of the W.A.A.





#### CHEERLEADERS

Martin, Farese, Clement, Kruse, co-captain; Hutchko, Weiler, Blood, Carino, Connor.

## Cheerleaders

The Spirit Committee, as its name implies, is dedicated to the maintenance of high spirit at Ursinus. Led by President Harvey Levin, it sponsors pep rallies, dances, and parties to enliven the Collegeville scene. Money taken in by the committee is donated to college organizations not specific-

ally provided for by the college budget. This year's projects were the buying of a batting cage for the baseball team and the raising of money to pay expenses to Australia for our two All-American field hockey players, Marge Dawkins and Ruth Heller.

## Spirit Committee

#### SPIRIT COMMITTEE

*First Row:* P. Sawyer, Cross, Berman, Cherry, R. Sawyer, DeGeorge, Schweiker, Martin, Hauser, Robecker. *Second Row:* Miller, Boeninghaus, Bowman, Welsh, secretary; Levin, president; Brown, treasurer; German, vice-presi-

dent; Kruse, Tull, Hutchko, Salwyn. *Third Row:* Brocksbank, Bushay, Perfetti, Weiler, Shaefer, Duckworth, Livingston, Bryson, Clement, Budd, Thomas, Meitzer, Constable.







THE URSINUS COLLEGE BAND

The band, under the command of John Hottenstein, student director, has shown a greater improvement this year than in previous years. One can truly say that the band is the backbone of school spirit. This was evident at the pep rallies and football games where the group did special formations credited to the careful planning of Wayne Kressley and John Hottenstein.

## Band

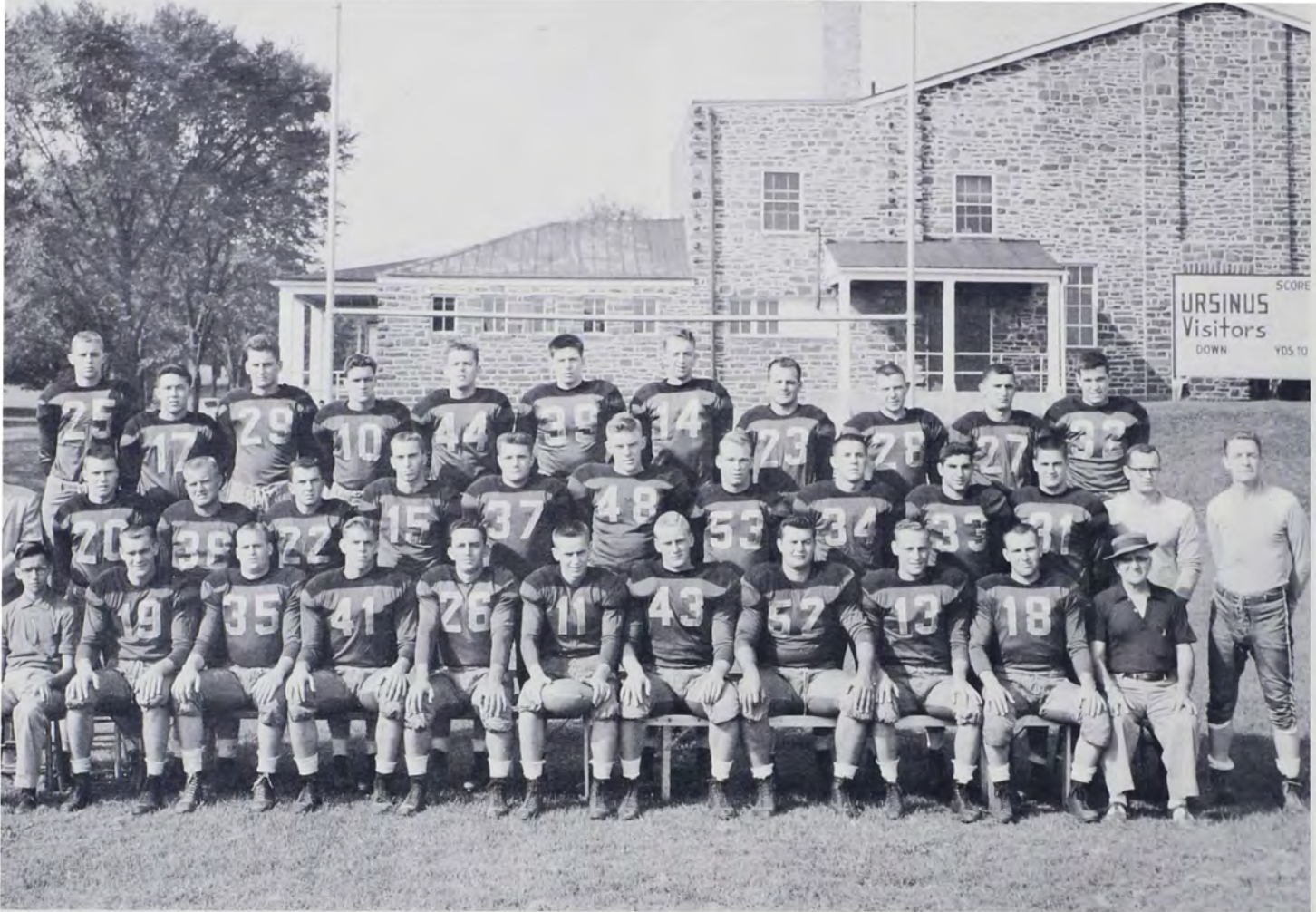
## Majorettes



The majorette squad this year was composed of seven girls under the leadership of Connie Thomas. Something new was added with the girls taking an active part in the band formation. The majorettes, attired in their red, old gold, and black uniforms, marched at the pep rallies and the post-game parades. Fancy marching routines and unusual twirling feats highlighted the 1955 football season.

Thomas, Myers, Foreman, Welsh, Shelly.





**FOOTBALL TEAM**

*Front Row:* Davies, manager; Carver, Applegate, Aucott, Stipa, Neborak, captain; Kresley, Nunn, Donnelly, Briner, Dellio, manager. *Second Row:* Roelofs, trainer; Holcombe, Gross, Rohm, Famous, Jackson, Rogers, Larkin, Heydt, Padula, Prutzban, Watson assistant coach; Gurzynski, head coach. *Third Row:* A. Wilson, Lim, Godshalk, Cianci, Deane, Paine, Miller, Stanley, Rybak, Arger, Finkbinder.

The Ursinus football team led by captain Paul Neborak finished the 1955 season with a record of three wins and five defeats. The Bears sprang on Susquehanna on opening day 30-6, but lost to Drexel 20-13 the next Saturday. A wet homecoming crowd saw them beat Haverford 12-0. However, they lost the next one away from home to Swarthmore 7-0. Wagner was a pushover 14-6, but the final three games went to the opponents, Moravian 47-0, Lebanon Valley 26-21, and Juniata 38-6.

# FOOTBALL



**CAPTAIN PAUL NEBORAK**

**SENIORS**

Krasley, Neborak, Aucott, Crigler, Stipa.

Assistant Coach Reid Watson, Coach Ray Gurzynski, and Assistant Coach Harry Spangler.





Oct. 1—Ursinus 30 - Susquehanna 6

The Ursinus eleven, playing what was to be their best game of the year, started off in high gear and never slowed down as they pushed a weak Susquehanna squad all over Patterson Field. The game was highlighted by the running of Bob Famous, who scored two touchdowns, and Don Carver who scored one touchdown. Dick Padula also hit pay-dirt and the Bruins scored two more points on a Susquehanna safety.

Pictured are Dick Dickerson picking up yardage towards a first down, and Doc Carver grinding out part of the 91 yards he gained against the Crusaders. The other picture shows Carver gathering in a touchdown pass which was nullified by a clipping penalty.

Oct. 8—Ursinus 13 - Drexel 20

The little Bears showed lots of fight and refused to quit in this game, but a powerful Drexel team, which went on to an undefeated season, managed to hold on for a hard-fought win. The highlight of the game was a spectacular 65-yard Neborak to Dickerson touchdown pass play with less than four minutes remaining in the game. The other Ursinus score was made by Bob Famous on a one-yard plunge.

Pictured are five gentlemen from DIT who were captured on the Ursinus campus the night before the game. The haircuts are the courtesy of the aforementioned Mr. Padula. Also pictured is Paul Neborak, Quarterback and Captain of the Bruins.





Oct. 15—Ursinus 12 - Haverford 6

A rainswept, mud-splattered victory over Haverford highlighted the first stormy Old Timers' Day in the history of the college. Ursinus scored in the first quarter on a one-yard quarterback sneak by Neborak and on the first play of the second half on a 69-yard scamper by halfback Bob Famous. The Bears then fought off a strong Haverford rally. Harry Donnelly was outstanding on defense.

Pictured are two Bear linemen loosening up and Al (The Toe) Stipa practicing conversions.



Oct. 22—Ursinus 0 - Swarthmore 7

An overconfident Ursinus eleven was upset by Swarthmore for their second loss of the season on Swarthmore's Homecoming Day. The Bears outplayed the Garnet all the way, but were unable to get the ball across the final marker when it counted. The turning point of the game was a Swarthmore quick-kick which rolled dead on the Ursinus five-yard line. Ursinus fumbled on the next play and Swarthmore went on to score the only touchdown of the game.

Pictured are Harry Donnelly, who played another great game, going up for a pass against two defenders, and Doc Carver taking a pass all alone. The other picture shows a Bruin ball carrier about to be tackled.



Oct. 29—Ursinus 14 - Wagner 6

Led defensively by Dick Heydt and offensively by 150-pound Bobby Crigler, Ursinus rebounded from the Swarthmore loss in fine fashion. Crigler scored once and made precious yardage whenever the Bears needed it. The other score was made by Paul Neborak on a one-yard plunge.

Pictured are Paul Neborak leading the Bruins onto the field, and Crigler, the star of the game.



Nov. 5—Ursinus 0 - Moravian 40

Cub and Key Day at Ursinus was one of gloom as Moravian ran roughshod over the Bears. Moravian's line led the way as the Greyhounds totaled 420 yards gained on the ground to 37 for Ursinus. That about sums it up.

Pictured are two Moravian backs about to be stopped after long gains and little Chris Rohm about to be hit by several giants from Moravian.



Nov. 12—Ursinus 21 - Lebanon Valley 26

In a real thriller, Ursinus was edged out by an alert L.V. eleven. Lebanon Valley intercepted two Bruin fumbles in mid-air and ran them over for touchdowns, and turned another Ursinus fumble into a third touchdown. In a losing cause, Neborak pitched three touchdown passes—two to star end Harry Donnelly, and one to Famous.

Pictured are the two touchdown catches made by Donnelly and hard-charging Bruin linemen Donnelly, Jackson, and Slotter leading the way for ball-carrier Dickerson.



Nov. 19—Ursinus 6 - Juniata 38

In a driving snowstorm, the little Bears closed out their season by coming off on the short end of a 38-6 encounter with undefeated Juniata at Huntington. The only Bruin score came on a 25-yard pass from Neborak to Donnelly. Ursinus played well but five T.D. passes by Juniata's Tarquinio proved too much. It was the last game in Ursinus uniforms for Neborak, Crigler, Stipa, George Aucott, and Leroy Krasley, pictured on the side. Also pictured are seven U.C. linemen driving the sled in a practice session.





VARSIY BASKETBALL TEAM

Schumacher and Neborak, co-captains; White, Sowers, Winograd, Heyser, manager; Berger, Chern, Engle, Law, Taylor, Smith, Owen.

# VARSIY BASKETBALL

Starting the 1955-56 basketball season under the guidance of the new head coach William Yost, the graduation-weakened Bears improved steadily over the long season. Led by their one-two scoring punch, co-captains Paul Neborak and Jack Schumacher, Ursinus climaxed the season with wins over Swarthmore and Haverford. The squad lost through graduation, Neborak and Schumacher, Engle, Winograd, Smith, and Owen, while Burger, Chern, Taylor, Wagner, and Somers will return for the next season.



COACH BILL YOST AND CO-CAPTAINS NEBORAK AND SCHUMACHER



THEIR FINAL SEASON FOR U. C.  
Neborak, Engle, Schumacher, Owen, Smith, Winograd.







JV BASKETBALL TEAM

Moser, captain; Williams, Rohm, Grundy, Delio, Watson, coach; Constantine, Koff, Famous.

# J.V. BASKETBALL



COACH REID WATSON AND CAPTAIN BOB MOSER

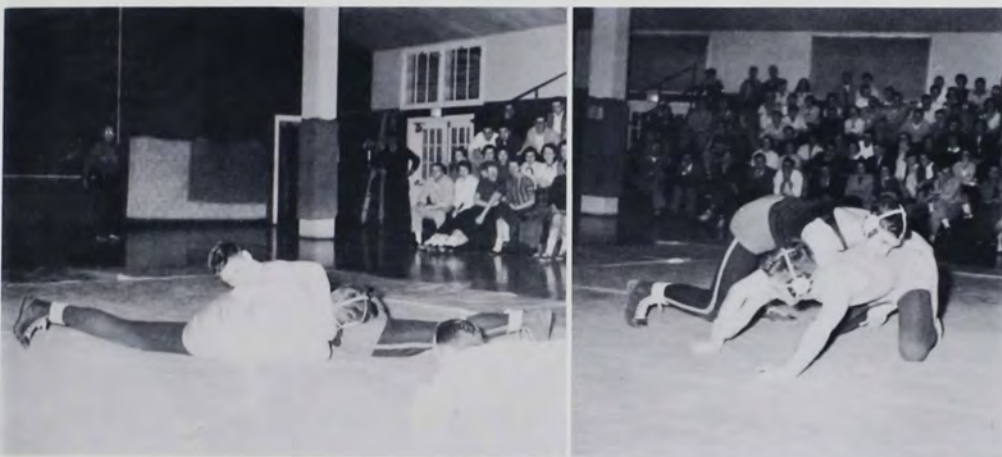


Junior varsity coach Reid Watson found himself with no returning jayvees at the offset of the season, and was forced to build an entirely new team. This, he did by combining the talents of new freshmen Williams and Schumacher, along with those of Famous, Rohm, Moser, Arger, and Constantine. Again at mid-semester the team was shorthanded by ineligibility, and the gap was filled by such sophomores as Grundy and Connelly and incoming freshman Koff. The high spot of the JV season came against Pharmacy, when the Bears broke over the one hundred scoring mark.

Once again the Bear wrestlers finished another successful season, compiling an impressive record of six wins and three losses. The season included the retaining of the 137-pound MAC championship by Captain Dick Padula, and the finishing of Freshman Jack Prutzman, 157-pounder, and Dick Heydt, 167 pounds, second and fourth respectively in the championship tournament. Don Knauf, wrestling in the 177-pound class which was 30 pounds over his own weight, emerged as the "plastic man"; he refused to get pinned. Rounding out the squad were Don Durr, 123 pounds, George Myazaki and Mark Weand, 130 pounds, Tony Cianci, a very promising Freshman at 147 pounds, and George Aucott and Jack "Bops" Jackson, heavyweights. Once again Coach Kurt Wieneke can be proud of the squad he produced.



CAPTAIN DICK PADULA AND COACH KURT WEINEKE



## WRESTLING

### WRESTLING TEAM

*First Row:* Durr, Prutzban. *Second Row:* Gobrecht, manager; Mayazaki, Padula, captain; Wieneke, coach; Knauf, Heydt, Hamilton, Cianci.





Coach Sieb Pancoast

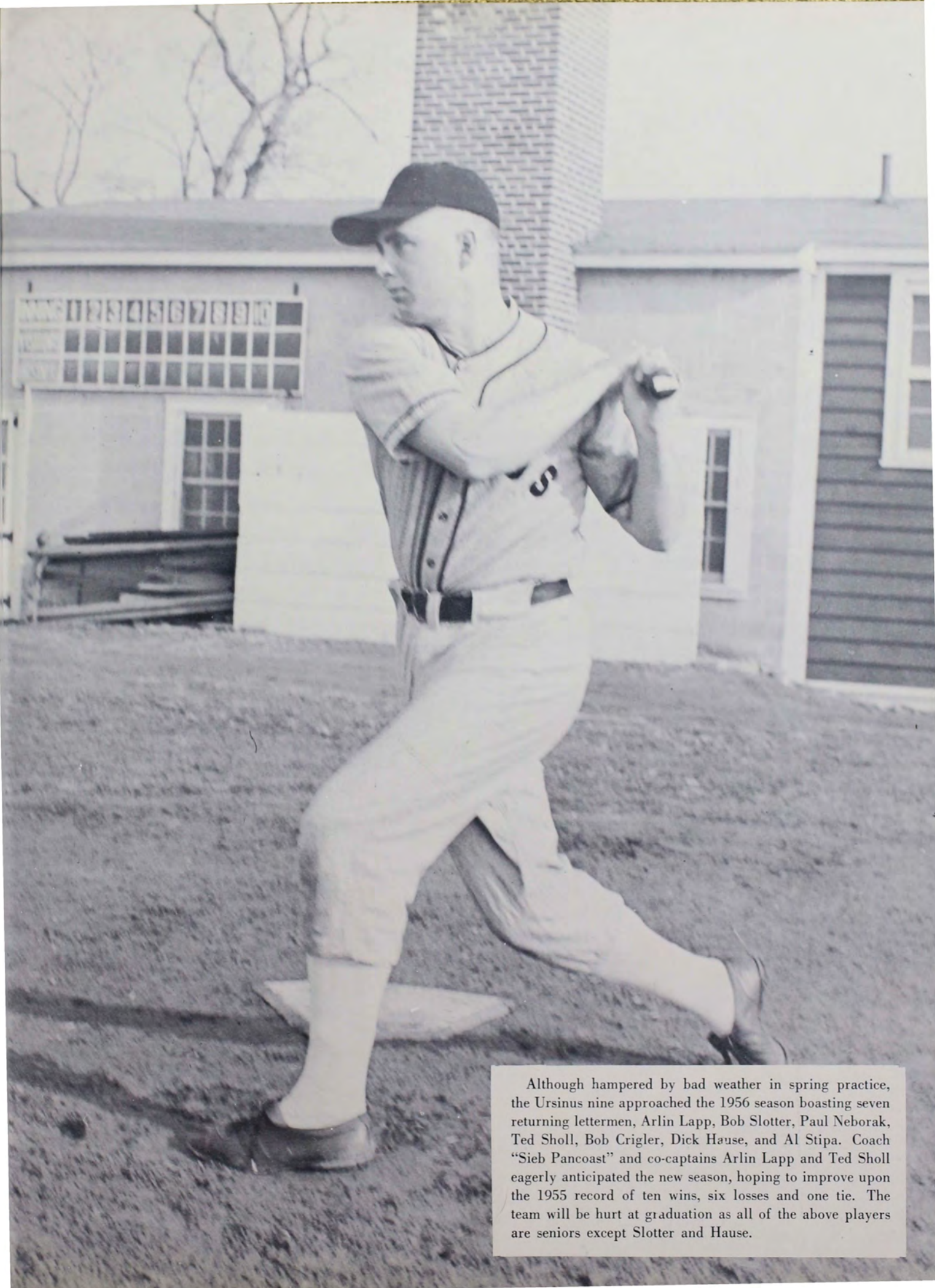


# BASEBALL

Co-captains Ted Sholl and Arlin Lapp

SENIORS Sholl, Crigler, Stipa, Lapp, and McCoy, manager. Not shown, Neborak.





Although hampered by bad weather in spring practice, the Ursinus nine approached the 1956 season boasting seven returning lettermen, Arlin Lapp, Bob Slotter, Paul Neborak, Ted Sholl, Bob Crigler, Dick Hause, and Al Stipa. Coach "Sieb Pancoast" and co-captains Arlin Lapp and Ted Sholl eagerly anticipated the new season, hoping to improve upon the 1955 record of ten wins, six losses and one tie. The team will be hurt at graduation as all of the above players are seniors except Slotter and Hause.

# SOCCER

The lack of experience and a host of injuries hampered the team throughout the season. The Bakermen led by co-captains Wayne Engle and Charles Tricebock ended with a 3-5 record. The highlight of the season came when Dave Burger was named goalie on the All-Pennsylvania, New Jersey, and Delaware first team. The Bears lost six seniors at graduation but many experienced players formed a strong nucleus for a promising '56 season. Bill Rheiner and Dave Burger will serve as co-captains for 1956.



CO-CAPTAINS CHARLIE TRICEBOCK AND WAYNE ENGLE WITH COACH "DOC" BAKER

## SOCCER TEAM

*First Row:* Ely, Godshall, Burger, McCoy, Heyser. *Second Row:* Dr. Baker, coach; Ciliberti, Engle, co-captain; Tricebock, co-captain; Schmoyer, Lawhead, manager. *Third Row:* Rheiner Harrison, Grundy, Spangler, Clisby.



# TRACK

The 1956 Ursinus College track team boasts of a very capable squad. Composed of many veterans of the 1955 team plus some outstanding Frosh hopefuls, the squad harbors many plans of conquest.

Captained by Bart Wilson, and coached by Ray Gurzybski, the U.C. team seems destined for an outstanding season. Harry Donnelly, top point receiver from last year appears as the man to beat. Much is also expected from Lee Lawhead, Karl Herwig, and Skip Ruth who all turned in repeated outstanding performances for the 1955 team.



Coach Ray Gurzybski and Captain Bart Wilson

## TRACK TEAM

*Kneeling:* Ruth, Dixon, Grenitz, Burger, Stanley, Knabe, Herwig, Weand, Buggeln, Larkin. *Standing:* Dippl, North, Knauf, Subin, Lord, Donnelly, Paine, Dickerson, Browne, Bretzger, D. Bretzger, Wilson, Captain; Gurzynski, Coach.

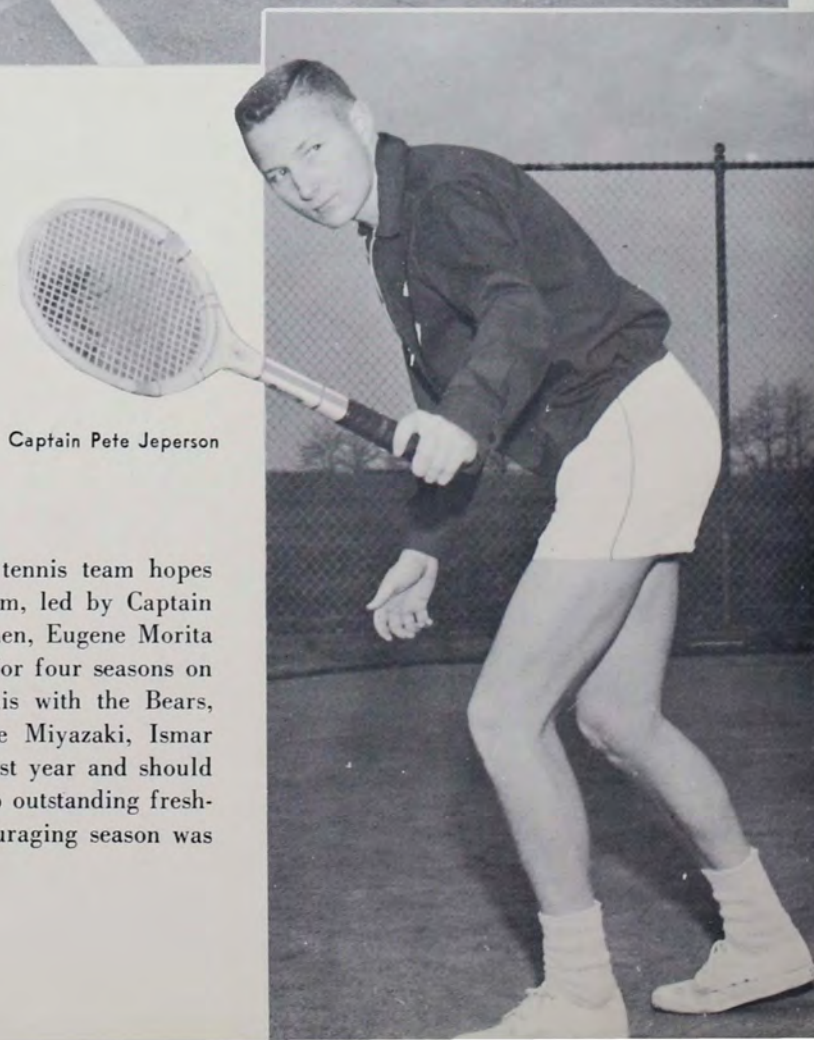




**TENNIS TEAM**

Miyazaki, Aucott, Ely, Kyde, Jesperson, Captain; Quinn, Coach; Morita.

# TENNIS



Captain Pete Jesperson

Coached again this year by Mr. Sidney Quinn, the Ursinus tennis team hopes to better its 1955 record of four wins and four losses. The team, led by Captain Pete Jesperson, will be aided by the return of two other lettermen, Eugene Morita and Tom Ely. Jesperson and Ely have distinguished themselves for four seasons on the courts while Gene Morita, playing his first season of tennis with the Bears, compiled a five win and two loss record last season. George Miyazaki, Ismar Schorsch, and Bob Gilgor played fine tennis for the J.V. team last year and should help to bolster the team once again. In addition the team had two outstanding freshmen prospects in Art Martella and Rudolph Celis. A most encouraging season was expected.

# INTRAMURALS







# VARSITY HOCKEY

## HOCKEY TEAM

*First Row:* Dawkins, Stadler, Irwin, Bauser, Watson, Heller, captain. *Second Row:* Adam, manager; Dunn, Gros, Lewis, Justice, Schick, Woodbury.

Captained by All-American center halfback Ruth Heller, the hockey team enjoyed one of its most successful seasons. An undefeated campaign eluded the Belles when West Chester squeezed out a 4-3 victory.

The most exciting game was the Beaver contest in which both defenses played airtight hockey until the second half when each team scored a goal. Probably the most satisfying victory was the 5-1 shellacking of Temple.

Those who placed on All-College teams were Marge Dawkins, who later went on to make All-American reserve; Phyl Stadler, second team; Alice Irwin, third team, and Vonnie Gros, fourth team. Rounding out the squad are Ricky Bauser, Neta Lewis, Aggie Watson, Anne Schick, Jane Dunn, Sue Justice, and Pat Woodbury. Although three valuable seniors will be graduated, a strong junior varsity team, which only lost one game, gives Miss Eleanor Snell a bright outlook for 1956.



COACH MISS ELEANOR SNELL AND CAPTAIN RUTH HELLER

ALL-AMERICANS DAWKINS AND HELLER



## SENIORS

*First Row:* Helmle, Bauser, Heller. *Second Row:* Lewis, Hottenstein, Stadler, Taylor.



**JUNIOR VARSITY HOCKEY TEAM**

*First Row: Hottenstein, LeCato, Taylor, McKnight, Helmle, Fay. Second Row: Albertson, Meitzner, Custer, Gilbert, Emenheiser, Williams. Third Row: Cross Wheeler, Dawson, Jacobs, Tays, manager; Royer, manager.*



# J.V. HOCKEY

**CAPTAIN DOTTIE McKNIGHT AND COACH JEN PRICE**



# VARSITY BASKETBALL



COACH MISS ELEANOR SNELL AND CAPTAIN MARGE DAWKINS



## SENIORS

Taylor, Bauser, Hottenstein, Lewis, Stadler, Helmle, Heller.

The 1956 girls' basketball team has had another very successful season this year. The starting team was a strong one with hard-driving Vonnie Gros who successfully uses a variety of shots, fast-cutting Ruthie Heller, Polly Taylor with her accurate set shots—the three forwards; captain Margie Dawkins, Pat Woodbury, Jane Dunn—the three guards; who worked a fast and effective man-to-man defense. Also seeing a lot of action during varsity games were Phyl Stadler and Ricky Bauser, quick-moving and sharp-shooting forwards, and freshman guard, Barb Schmoyer.



## BASKETBALL TEAM

Tayes, manager; Stadler, Taylor, Bauser, Gros, Heller, Woodbury, Dunn, Dawkins.





**JUNIOR VARSITY BASKETBALL TEAM**

*Kneeling:* Hottenstein, Lewis, McKnight. *Standing:* Adam, manager; LeCato, Gilbert, Wheeler, Jacobs, Emmenheiser, Helmle.



The junior varsity basketball team had a very successful season. The team was well fortified by a number of outstanding freshmen, Terry Jacobs, Elaine Emmenheiser, and Carol Williamson as starting forwards, and Sue Harmon as guard. The other starting guards, seniors Nesta Lewis and Sue Hottenstein, were both valuable for their teamwork. A great number of other players added valuable depth to the squad. This team shows great promise to be a great strong varsity in the future.

**COACH JEN PRICE WITH CO-CAPTAINS NESTA LEWIS AND SUE HOTTENSTEIN.**

# J.V. BASKETBALL

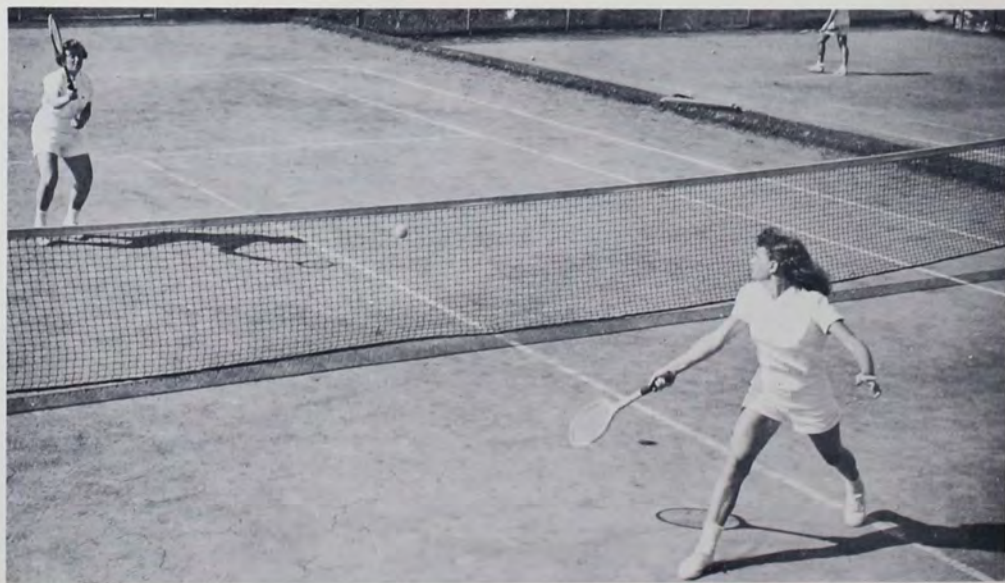




**TENNIS TEAM**

*Front Row:* Bauser, Rawcliffe, Heller, Cross, Price, coach. *Rear Row:* Bream, Dandrea, Stadler, Schick, Taylor, Gros, Dunn, Lewis.

# TENNIS



Coach Jen Price and Captain Connie Cross



With the addition of experienced Freshman talent which strengthened the squad as a whole, Coach Jen Price's girls' tennis team compiled an impressive and successful 1956 record.

Captain Connie Cross, Ruth Heller, and Vonnie Gros, returning Varsity veterans, were able to overcome the loss of last year's singles standout, Rene Rawcliffe. Freshmen Carol LeCato, Bunny Alexander, and Lynn Anderson were among newcomers who balanced and added spark to what looked like the best tennis team to emerge from Ursinus in years.



**LACROSSE TEAM**

*Kneeling:* Dunn, Fay, Justine, Bauser, Syvertson, Berry. *Standing:* McNight, Stadler, Canter, Woodbury, Gros, Taylor, Heller, Lewis, Price, coach.

# LACROSSE

Last year, lacrosse, a new sport at Ursinus, was introduced for the first time. This activity quickly attained great popularity on the campus.

Although lacrosse is not organized on an intercollegiate basis, last year the girls were fortunate to have the opportunity to play at Bryn Mawr playday and at a clinic coached by Miss Allen of Swarthmore.

This year, under Coach Jen Price and led by President Ricky Bauser, the lacrosse club had the advantage of coaching by members of the Philadelphia Women's Lacrosse Association, again participated in the Bryn Mawr Playday, and enjoyed many other activities.

The Badminton Team, under the supervision of Coach Jen Price, registered impressive wins over Penn, Drexel, Bryn Mawr, Rosemont, and Chestnut Hill and succumbed only to Swarthmore for a season record of five victories and one defeat.

The Varsity was composed of Captain and Manager Connie Cross, first singles, undefeated second and third singles Vonnie Gros and Ricky Bauser, first doubles Carol LeCato and Phil Stadler, and second doubles Pat Woodbury and Marge Dawkins.



Captain Connie Cross and Coach Jen Price.

# BADMINTON

**BADMINTON TEAM**

*Kneeling:* Cross, captain; McNight, Dunn, Wheeler, Alexander, Stadler, Woodbury. *Standing:* LeCato, Gros, Dietrich, Helmle, Meitzner, Dawkins, Bauser.





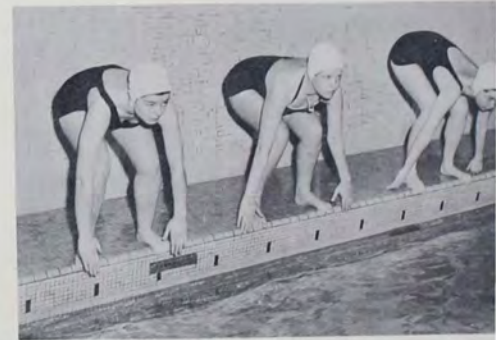
#### SWIMMING TEAM

Fay, captain; Syvertsen, Williams, Robbins, Berry, Rapp, Soper, Irwin, Kern, Hespensheide, Stecker, Stoneback, Carter.

The 1955-56 swimming team, was coached by Sis Bosler, a former Ursinus student and swimmer. With many promising freshmen and returning undergraduates, Sis did a good job in building a strong team.

The team was captained by Lucy Fay and manned by veterans, Meryl Syvertsen, Judy Berry, Carol Hespensheide, Teddy Rapp, Ginny Stecker and freshmen Alice Irwin, Jackie Robbins, Carol Kern and Tama Williams.

Outstanding team members included: Carol Hespensheide in diving, Jackie Robbins in breast stroke, Meryl Syvertsen in backstroke, Alice Irwin in free-style and Lucy Fay, Tama Williams, Alice Irwin, and Jackie Robbins in the two-hundred yard free-style relay.



## SWIMMING

CAPTAIN LUCY FAY AND COACH SIS BOSLER





**SOFTBALL TEAM**

Helmle, Dunn, Schultz, Woodbury, Gros, Snell, Coach; Royer, Stadler, Taylor, Captain; Bauser.



# SOFTBALL

Captain Polly Taylor and Coach Eleanor Snell

The 1956 softball team enjoyed another successful season. Outstanding for the Belles were captain and pitcher Polly Taylor and hard-hitting first baseman Phyl Stadler. Other veterans included Ricky Bauser, and outfielders Pat Woodbury, Marge Dawkins, Jane Dunn, Peg Royer, and Roxie Albertson. This nucleus and several promising Freshmen gave Coach Eleanor Snell a strong defense and a powerful array of hitters.





*To Glances,*

*To Advances,*

*To Dances*



# *Social Activities*





ROBIN BLOOD  
Old Timers' Day Queen

For the first time in the history of Old Timer's Day it rained. Although the Ursinus-Haverford football game was played on a mud-splattered field, it was decided to cancel the rest of the traditional Old Timer's Day ceremonies until November 5, the date of the Ursinus-Moravian football game.

The windy but clear day was welcomed by the entire student body; it was the first clear Saturday that the Bears had played at home. In the morning Glenwood Hall won the best decorated dormitory trophy, awarded by the Spirit Committee each year, for the third consecutive time. They automatically gained permanent possession of the trophy.

The students welcomed back the Cub & Key alumni for their sixteenth annual reunion and then witnessed the defeat of the U. C. football team at the hands of Moravian. The day closed with a dance at which Robin Blood was crowned Old Timer's Day Queen, a ceremony which had been postponed from the rained out date of October 15.



FRATERNITY QUEENS

Mary Jo Turtzo, Delta Pi Sigma; Phyl Stadler, Sigma Rho Lambda; Sonnie Kruse, Zeta Chi; Emma Bell, Alpha Phi Epsilon; Robin Blood, Delta Mu Sigma; Ellie Marcon, Beta Sigma Lambda.

# Old Timers' Day





GLENWOOD WINS AGAIN!



# and Moravian Day





## Christmas Festivities

Take fifteen gaily decorated dormitories and add happy laughter, traditional songs, varied refreshments and antics, and male carollers complete with "We Wish You a Merry Christmas" to taste. Stir in soft candlelight and rainbow-hued gowns, then mix together with one jolly Santa Claus with candy canes and more carols and singing. Whip in lightly, being careful not to injure one brightly lit limb, a Christmas tree large enough to illumine a greatly transformed gym. Sprinkle mixture lightly with beautiful strains of "The Messiah." Mix with loving care and heat in the oven of tradition for many years; serve with good feeling and fond memories for Christmas at Ursinus.







OUR LORD AND OUR LADY  
Robin Blood and Harvey Levin



SOME OF THOSE who braved the weather!



"Plain and Fancy" was the theme of the Senior Ball December 9 at Sunnybrook Ballroom. In spite of inclement weather, countless members of the four classes danced to the music of Charlie Boyer and his band. The crowning of the Lord and Lady of the Ball, Harvey Levin and Robin Blood, was the highlight of this gala function of the Class of 1956.

## The Senior Prom

MORE THAN ONE car needed pushing!









# The Junior Prom

The Junior Prom, with the theme of Spring Coronation, enlivened Sunnybrook Ballroom on April 22, 1955. Under the direction of Joann Myers and Ernie Ito, the ballroom was transformed into a medieval courtroom with a huge crown surrounded by appropriately dressed courtiers. Numerous couples danced to the music of Dick Bruce and his orchestra.

The highlight of the evening was the crowning of the Queen and the procession of the court consisting of June Barron, Jeanette Foreman, Lillian Kyritsis and Eileen Wilson. New members of Cub and Key were announced at the Junior Prom. The members of the class of 1956 so honored were Paul Neborak, Harvey Levin, and Terry German.

**JUNIOR PROM QUEEN ELLIE MARCON** with her attendants: Eileen Wilson, Lillian Kyritsis, Jeanette Forman, and June Barron.





## Lorelei

Leap Year traditions are nothing new at Ursinus. Once a year fair Ursinus ladies break tradition and treat their men to the dance known as the Lorelei. Rules flew to the winds this year as the Cinderellas took advantage of their opportunity to dance with their Prince Charmings to the music of Ben Napier at Sunnybrook's spacious ballroom. By popular vote, Bob Constable was chosen to reign over the evening. Despite a snowfall earlier in the day, the evening commenced with no mishaps over than a number of wet feet. The gay "corsages" of the men and the underseas theme combined to transform the evening into one not soon to be forgotten.



Bob Constable is crowned king of the Lorelei by Mrs. Helfferich.



# May Day 1955

May 14, 1955, heralded the traditional May Day at Ursinus. Clowns, cats, and dolls colored the presentation of "The Magic Hours." The climax of the pageant took place as the May Queen, Priscilla Shinehouse, received the symbol of her title. After the annual softball game, everyone enjoyed a buffet supper on the lawn. The day closed with the Curtain Club's presentation of "My Three Angels."



MAY QUEEN PRISCILLA SHINEHOUSE and her court: Mims Lawley, Ellie Marcon, Valerie Spencer, Elizabeth Haslem, Marion Haslem, Lillian Kyritsis, Joan Donald, and Joan Martin.



PRISCILLA SHINEHOUSE  
May Queen, 1955



# May Day 1956



MAY DAY MANAGER JODY MYERS  
AND DIRECTOR CONNIE POLEY

ROBIN BLOOD  
May Queen, 1956



A very talented, attractive, and conscientious coed, Robin Blood, attained the dual honor of being elected May Queen and being the author of the annual pageant. The 1956 pageant was directed by Miss Connie Poley and managed by Miss Jody Myers. Both did an exceptional job. Once again the fine cooperation and work of the women of Ursinus enabled an outstanding event to be beautifully presented.

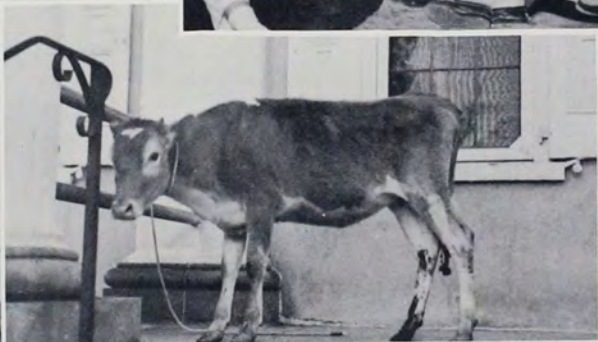
The May Queen was attended by Mary Frantz, Ellie Marcon, Marylou Adam, Joan Bradley, Valerie Spencer, Joan Martin, Penny Hill, and Jackie Robbins.

The pageant was followed by the traditional father-daughter softball game, and then everyone enjoyed a buffet supper served on the lawn. The day was made complete by the Curtain Club's presentation of "Charley's Aunt."



MAY QUEEN AND HER COURT

Mary Lou Adam, Jackie Robbins, Mary Frantz, Joan Bradley, Robin Blood,  
Joan Martin, Penny Hill, Valerie Spencer, Ellie Marcon.







# SENIOR DIRECTORY

- ALLEN, MARLETTE  
Ryanford Road, Schwenksville, Pennsylvania
- AUCOTT, GEORGE W., JR.  
8038 Gilbert Street, Philadelphia, Pennsylvania
- BARNDT, RICHARD A.  
R.D. No. 4, Bethlehem, Pennsylvania
- BARRON, JUNE A.  
Springtown, Pennsylvania
- BAUSER, RUTH G.  
46 Grace Avenue, Great Neck, New York
- BEAN, MARTHA J.  
3428 W. Penn Street, Philadelphia, Pennsylvania
- BECKER, LOUISE F.  
45 Sussex Street, Newton, New Jersey
- BEEEMER, MORGAN B.  
Box 347, R.D. No. 1, Clarks Summit, Pennsylvania
- BILLMAN, KARL D.  
1843 Market Street, Harrisburg, Pennsylvania
- BISTREMOVITZ, LILLIAN  
1052 Warburton Avenue, Yonkers, New York
- BLOOD, ROBIN M.  
6508 Winchester Avenue, Ventnor, New Jersey
- BOOTH, FRED C.  
232 W. 7th Avenue, Trappe, Pennsylvania
- BOWMAN, BEVERLY A.  
3339 Bowman Street, Philadelphia, Pennsylvania
- BREAM, GWENN S.  
202 W. Broadway, Gettysburg, Pennsylvania
- BROSIOUS, JAMES C.  
708 Pine Street, Jim Thorpe, Pennsylvania
- BROWN, FRANK P., JR.  
7440 Briar Road, Philadelphia, Pennsylvania
- BURNS, PATRICIA A.  
267 White Horse Pike, Audubon, New Jersey
- CARSON, NANCY  
411 Yale Avenue, Hillside, New Jersey
- COBURN, HOPE  
91 College Avenue, Flourtown, Pennsylvania
- CONDON, PATRICIA G.  
1628 Elaine Street, Philadelphia 19, Pennsylvania
- CONSTABLE, G. ROBERT  
3106 Knorr Street, Philadelphia, Pennsylvania
- CRANSTON, JOHN P.  
231 Davisville Road, Willow Grove, Pennsylvania
- CRIGLER, W. ROBERT  
4712½ Budlong Avenue, Los Angeles, California
- DAVIS, SHIRLEY A.  
608 Germantown Pike, Lafayette Hills, Pennsylvania
- DEOLDEN, CAROLINE R.  
7506 Luxor Avenue, Downey, California
- DONNELLY, HARRY W.  
506 Gilpin Road, Willow Grove, Pennsylvania
- DRUM, RAY K.  
10 N. Hoffman Boulevard, Ashland, Pennsylvania
- DUCKWORTH, ERIC C.  
527 Crown Street, Willow Grove, Pennsylvania
- DURN, MARILYN A.  
1934 Kemmerer Street, Bethlehem, Pennsylvania
- EARLE, PETER  
17 Lincoln Avenue, Goshen, New York
- EDSON, JOHN A.  
2012 DeKalb Street, Norristown, Pennsylvania
- ELY, THOMAS O.  
447 Highland Avenue, Jenkintown, Pennsylvania
- ENGLE, WAYNE E.  
121 Oley Street, Reading, Pennsylvania
- FAUST, NAOMI L.  
130 East 5th Avenue, Conshohocken, Pennsylvania
- FISHER, VINTON D., JR.  
5634 Chester Avenue, Philadelphia, Pennsylvania
- FOGG, ELIZABETH C.  
23 Van Meter Terrace, Salem, New Jersey
- FOREMAN, JEANETTE Y.  
Box 420, R.D. No. 1, Royersford, Pennsylvania
- FRANTZ, MARY A.  
754 Washington Street, Easton, Pennsylvania
- FRETZ, KATHLEEN C.  
211 Main Street, Souderton, Pennsylvania
- FREW, JANE T.  
10 A. Nice, Frackville, Pennsylvania
- GARLICH, PRISCILLA A.  
Box 193, R. D. No. 1, Royersford, Pennsylvania
- GEORGARIS, CONSTANTINA  
1200 N. Ampton Street, Easton, Pennsylvania
- GERMAN, TERRY M.  
659 Park Lane, Philadelphia 44, Pennsylvania
- GODSHALL, FREDRIC A.  
706 Chestnut Avenue, Collegeville, Pennsylvania
- GOLDFINE, BURTON P.  
4614 13th Street, Philadelphia, Pennsylvania
- GRAF, PAUL A., JR.  
84 Dartmouth Road, Bala-Cynwyd, Pennsylvania
- GREBE, RUSSEL  
7150 Georgian Road, Philadelphia 38, Pennsylvania
- GRIESER, ROBERT H.  
56-14 215 Street, Bayside, New York
- GRIGGER, JOAN A.  
132 Woodbridge Avenue, Metuchen, New Jersey
- HAIN, JEAN A.  
3254 Harrison Avenue, Muhlenberg Park, Reading, Pennsylvania
- HARTLIEB, MARYHELEN  
130 W. Mount Kirk Avenue, Norristown, Pennsylvania
- HECTOR, RICHARD A.  
145-04 157th Street, Jamaica 34, New York
- HEINRICHS, C. ELIZABETH  
1061 Grant Avenue, Pelham Manor, New York
- HELLER, RUTH T.  
239 Bickley Road, Glenside, Pennsylvania
- HELMLE, FAITH L.  
309 McKinley Avenue, Norwood, Pennsylvania
- HENNESSEY, RICHARD H.  
1108 County Line Road, Bryn Mawr, Pennsylvania
- HEYSER, DAVID L.  
Valley Forge Road, Norristown, Pennsylvania
- HOBERMAN, MAURY  
205 N. Penn Street, West Chester, Pennsylvania
- HOTTENSTEIN, SUE H.  
904 Blythe Avenue, Drexel Hill, Pennsylvania
- HOTTENSTEIN, W. JOHN  
31 Lindbergh Avenue, Broomall, Pennsylvania
- HOW, PHILIP H.  
1007 Greenlane, Primos, Pennsylvania
- HYER, JOSEPH L.  
431 E. Tenth Avenue, Conshohocken, Pennsylvania
- JESPERSEN, PETER  
R.D. No. 7, Bridgeton, New Jersey
- JEWITT, DONALD G.  
115 Westdale Road, Upper Darby, Pennsylvania
- JONES, SHIRLEY A.  
8212 Seminole Street, Philadelphia, Pennsylvania
- KARASIC, H. LAWRENCE  
1519 3rd Avenue, Asbury Park, New Jersey
- KATINSKY, HARVEY  
522 Randolph Street, Camden, New Jersey
- KATZ, SAMUEL C.  
732 Martin Road, Philadelphia, Pennsylvania
- KEHLER, FRANK H.  
1106 W. Airy Street, Norristown, Pennsylvania
- KERR, THOMAS P.  
260 Shadeland Avenue, Drexel Hill, Pennsylvania
- KNABE, HENRY H.  
45-32 169th Street, Flushing, New York
- KOCH, BARBARA C.  
19 Oak Hill Road, Short Hills, New Jersey
- KRAMER, MARGARET A.  
10 E. Mahonoy Avenue, Mahonoy City, Pennsylvania
- KRASLEY, LEROY O.  
Lower Lewis Road, Royersford, Pennsylvania
- KUTZER, JOAN L.  
916 Fairfax Road, Drexel Hill, Pennsylvania



# SENIOR DIRECTORY

- KYDE, NEIL G.  
474 Pinecrest Road, Springfield, Pennsylvania
- KYRITSIS, LILLIAN  
19 S. 12 Street, Easton, Pennsylvania
- LAPP, ARLIN D.  
R.D. No. 1, Souderton, Pennsylvania
- LEIVY, DAVID MAYER  
1321 Spruce Street, Philadelphia, Pennsylvania
- LEVIN, HARVEY M.  
5853 Hazel Avenue, Philadelphia 43, Pennsylvania
- LEWIS, NANCY J.  
17 Nassau Road, Larchmont, New York
- LEWIS, NESTA R.  
17 Nassau Road, Larchmont, New York
- LODER, EARL C.  
R.D. No. 1, Mohrsville, Pennsylvania
- LOPER, CAROL L.  
6300 N. 7th Street, Philadelphia, Pennsylvania
- MARCON, ELEANOR L.  
661 Edgeboro Boulevard, Bethlehem, Pennsylvania
- MATTHEWSON, RODERICK D.  
18 Oakland Road, Broomall, Pennsylvania
- MAYOR, BARBARA A.  
7349 Ogontz Avenue, Philadelphia, Pennsylvania
- McCOY, THOMAS C.  
Lakeside Road, Devon, Pennsylvania
- McCURDY, JEANNE McI.  
306 Francis Avenue, Norristown, Pennsylvania
- McINTYRE, THOMAS J.  
Pennypacker Road, R.D. No. 1, Royersford, Pennsylvania
- McKEEGAN, DANIEL J.  
29-13 167th Street, Flushing, New York
- MILLHAM, RICHARD B.  
1828 Ambler Road, Glenside, Pennsylvania
- MOORE, JEAN E.  
139 N. George Street, Millersville, Pennsylvania
- MORRIS, JAMES EDGAR  
100 A-4 Charles Drive, Bryn Mawr, Pennsylvania
- MYERS, JOANN A.  
25 N. Seward Street, York, Pennsylvania
- NEBORAK, PAUL  
R.D. No. 1, Royersford, Pennsylvania
- NEFF, JOSEPHINE A.  
Tennent, New Jersey
- NEMPHOS, PETER G.  
409 Swede Street, Norristown, Pennsylvania
- OKINO, HAZEL K.  
1312 Second Street, Seabrook, New Jersey
- OWEN, RONALD P.  
641 Raikes Road, Huntingdon Valley, Pennsylvania
- PAINE, NANCY L.  
118 W. Fornance Street, Norristown, Pennsylvania
- PARKHURST, MAJORIE A.  
308 White Horse Pike, Hammonton, New Jersey
- POLIWODA, DONALD  
R.D. No. 1, Norristown, Pennsylvania
- POLTO, JOHN A.  
629 Walnut Street, Coatesville, Pennsylvania
- PRATT, JANET E.  
27 Cleveland Street, Bergenfield, New Jersey
- PROSPERO, JOSEPH M.  
224 South Street, Pottstown, Pennsylvania
- RAPP, ELEANOR A.  
229 Morgan Avenue, Collingswood, New Jersey
- REHMANN, EARL J.  
305 Central Avenue, Hammonton, New Jersey
- REINHARDT, RONALD J.  
50 Severna Avenue, Springfield, New Jersey
- ROHLAND, JOHN E.  
235 Walnut Street, Lebanon, Pennsylvania
- ROSENFELD, MYRON E.  
1615 67th Street, Philadelphia, Pennsylvania
- SALWEN, HARVEY I.  
Susquehanna Road, Rydal, Pennsylvania
- SCHLEGAL, BARTON E.  
Four Pines Apartments, Colledgeville, Pennsylvania
- SHAW, CAROLL L.  
25 E. Marshall Street, Norristown, Pennsylvania
- SHELLY, ELWYN K.  
519 E. Montgomery, North Wales, Pennsylvania
- SHOLL, THEODORE G.  
433 Woodbine Avenue, Westville, New Jersey
- SHRAGER, JOSEPH D.  
5729 N. Park Avenue, Philadelphia, Pennsylvania
- SHUMAKER, NANCY A.  
Cresco, Pennsylvania
- SINGER, JOHN E.  
R.D. No. 3, Norristown, Pennsylvania
- SMITH, EMMA J.  
R.D. No. 2, Colledgeville, Pennsylvania
- SMITH, NOBLE M.  
234 W. 5th Avenue, Conshohocken, Pennsylvania
- SMITH, PHILIP M.  
1240 E. South Street, York, Pennsylvania
- SNYDER, ROBERT H.  
148 Dott Street, Pennsburg, Pennsylvania
- STADLER, PHYLLIS M.  
16 Packer Avenue, Rumson, New Jersey
- STAHL, JOAN E.  
310 E. Garden Road, Oreland, Pennsylvania
- STECKER, VIRGINIA L.  
1805 Chelsea Road, Philadelphia 26, Pennsylvania
- STONEBACK, STEPHANIE  
Springtown, Pennsylvania
- STIPA, ALVIN C.  
518 Arch Street, Spring City, Pennsylvania
- STRICKLER, JOHN B.  
Box 143, Limerick, Pennsylvania
- SUTLIFF, NANCY R.  
187 Welsh Road, Huntingdon Valley, Pennsylvania
- SWARTZ, GEORGE F.  
1455 Spencer Street, Frackville, Pennsylvania
- TAYLOR, PAULINE A.  
414 Ashland Avenue, Folcroft, Pennsylvania
- TARMICHAEL, THOMAS L.  
1015 Bellview Avenue, Pottstown, Pennsylvania
- THOMAS, CONSTANCE E.  
1330 Turner Street, Allentown, Pennsylvania
- TRICEBOCK, CHARLES B.  
435 Main Street, Colledgeville, Pennsylvania
- TUCKERMAN, WILLIAM S.  
Plymouth Meeting, Pennsylvania
- TULL, WILLIAM F.  
5025 McKean Avenue, Philadelphia, Pennsylvania
- VOLLMER, ERIC H.  
"Beraud Lodge," Valley Forge, Pennsylvania
- WADLEIGH, MARYLOU  
226 W. Durand Street, Philadelphia 19, Pennsylvania
- WAGNER, BARBARA A.  
57 N. Schuylkill Avenue, Norristown, Pennsylvania
- WEHMEYER, LOIS A.  
Buckingham, Pennsylvania
- WERTZ, ANN R.  
120 N. Centre Street, Frackville, Pennsylvania
- WEVER, ANNE R.  
Box 123, Purcellville, Virginia
- WHITE, M. LOUISE  
9 Clearfield Avenue, Norristown, Pennsylvania
- WHITE, WILLIAM J.  
2701 MacDade Boulevard, Holmes, Pennsylvania
- WILBY, ARTHUR J.  
7380 Henry Avenue, Philadelphia 28, Pennsylvania
- WILSON, BART H.  
319 Mill Road, Hatboro, Pennsylvania
- WILSON, EILEEN K.  
Grace Badmen Apartments, Schwenksville, Pennsylvania
- WILSON, JACK W.  
Grace Badmen Apartments, Schwenksville, Pennsylvania
- WINOGRAD, ELLIOTT  
55 S. Main Street, Neptune, New Jersey
- YANKOLOWITZ, SAM  
R.D. No. 6, Bridgeton, New Jersey

# PATRONS

*The class of 1956 would like to extend its appreciation  
to the following patrons for their contribution to the 1956  
RUBY.*

MR. ANR MRS. GEORGE W. AUCOTT  
MR. AND MRS. R. N. BAGGS  
MR. AND MRS. MAYNARD BARRON  
MR. AND MRS. ARTHUR J. BAUSER  
MR. AND MRS. CLAUDE H. BEAN  
REV. DR. AND MRS. A. M. BILLMAN  
MR. AND MRS. JOHN BISTREMOVITZ  
MR. AND MRS. JOHN G. BOWMAN  
MR. AND MRS. GLENN L. BREAM  
MR. AND MRS. ALBERT C. BREIDEGAM, SR.  
GEORGE AND ALVA BRENNER  
MR. AND MRS. HERMAN BROSIUS  
DR. AND MRS. J. E. P. BURNS  
DR. AND MRS. WILMER F. BURNS  
MR. AND MRS. THOMAS W. CARSON  
MR. AND MRS. W. ROY CLEMENT  
MR. AND MRS. WILDUN S. COBURN  
COLLINS BUSINESS MACHINE CO., INC., NORRISTOWN  
MR. AND MRS. GEORGE H. CONSTABLE  
J. F. CRANE, SR.  
MRS. RUTH H. CRANSTON  
W. RUSSELL CUMMINGS  
MR. EDWIN H. DAVIS  
MR. AND MRS. WILLIAM P. DELANY, SR.  
LOUIS AND HELEN DeOLDEN  
MR. AND MRS. MALCOLM M. DERK  
MR. HERBERT DeRYDER  
MR. AND MRS. HARRY A. DONNELLY  
MR. AND MRS. GEORGE T. DRUM  
MR. AND MRS. E. C. DUCKWORTH, SR.  
MR. AND MRS. JAMES E. DURN  
MR. AND MRS. ROWLAND A. EARLE  
MR. HERBERT J. ELY  
MR. AND MRS. EDMUND W. ENGLE  
MR. AND MRS. ELLSWORTH E. FAUST  
MRS. NORMAN A. FOGG  
MR. AND MRS. HAROLD W. FRANTZ  
DR. AND MRS. HERBERT J. FREW  
THE GERMAN FAMILY  
JULIUS GLAUSER  
MR. AND MRS. JACK GOLDFINE  
MR. AND MRS. PAUL GRAF  
MR. LUDWIG F. GREBE  
MR. AND MRS. PHILIP GRIESER  
MR. AND MRS. HAROLD R. HAIN  
MR. AND MRS. HEINRICHS  
MR. AND MRS. HARVEY L. HELLER  
MR. AND MRS. G. F. HELMLE  
MR. AND MRS. H. E. HENNESSEY  
MR. AND MRS. AL HOBERMAN  
MR. AND MRS. C. W. HOJMES  
MR. AND MRS. WILLIAM HOTTENSTEIN  
MR. AND MRS. DANA G. HOW  
MR. AND MRS. WILFRED IEWITT  
BJARNE AND MARY JOHANNESSEN  
CHARLES W. JONES

MR. AND MRS. FLOYD E. JUSTICE  
REUBEN KARASIC  
MR. HYMAN KATINSKY  
MR. AND MRS. THOMAS A. KERR  
CHARLES KERSTING  
MR. AND MRS. J. WARREN KINSMAN  
MR. AND MRS. HENRY KNABE  
MR. AND MRS. GEORGE W. KOCH  
REV. AND MRS. R. E. KRAMER  
LeROY W. KRASLEY  
MR. AND MRS. GEORGE M. KUTZER  
FRANK E. LEIVY, M.D.  
MR. AND MRS. HARRY LEVIN  
MR. AND MRS. IVOR LEWIS  
DR. AND MRS. JOHN P. LIM  
DR. AND MRS. STEPHEN D. LOCKEY  
MR. AND MRS. R. J. LODER  
MR. AND MRS. HENRY C. LOPER  
DR. AND MRS. RICHARD C. MADDOCK  
MR. AND MRS. RICHARD N. MAYOR  
MR. AND MRS. PAUL F. McCOY  
MR. AND MRS. E. NEGLEY MILLHAM  
LILLIAN MOSER MOLITOR  
MRS. HELEN BELL MORRIS  
MR. AND MRS. WALTER F. MURRAY  
REV. CHARLES H. NEFF  
MR. PETER NEMPHOS, SR.  
JAMES H. OKINO  
MR. AND MRS. WILLIAM V. PADULA, SR.  
REV. AND MRS. R. MAXWELL PAINE  
MR. AND MRS. JONATHAN G. PETTIT  
MR. AND MRS. WILLIAM H. PRATT  
V. MILLER PRESTON, SR.  
HOWARD PRICE  
MR. AND MRS. PHILIP H. RAPP  
MR. AND MRS. EARL REHMANN, SR.  
MR. AND MRS. JOHN J. REINHARDT  
NICHOLAS J. ROMANO  
MR. AND MRS. MAURICE SALWEN  
MRS. B. SEINBERG  
MR. WILLIAM F. SHAW  
MR. AND MRS. THOS. W. SHOLL  
MR. P. JAY SHUMAKER  
MR. AND MRS. WILLIAM G. SINGER  
MR. AND MRS. AARON A. SMITH  
MR. AND MRS. NOBLE E. SMITH  
MR. AND MRS. STANLEY H. SNYDER  
MR. AND MRS. J. HAROLD STONEBACK  
A. B. STOUT  
MR. AND MRS. WM. J. STRASSER  
MR. AND MRS. BRYCE D. SUTLIFF  
GEORGE E. SWARTZ  
MR. AND MRS. JOSEPH F. TARMICHAEL  
MRS. CAROLYN THOMAS  
MR. AND MRS. C. TRICEBOCK  
DR. AND MRS. EDWIN D. TUCKERMAN  
MR. AND MRS. EDWARD WADLEIGH  
MR. AND MRS. LESLER E. WEHMEYER  
MR. AND MRS. CHARLES H. WERTZ  
MR. HILBERT A. WEVER  
MR. AND MRS. MAURICE T. WHITE  
MR. AND MRS. A. H. WILSON  
MR. AND MRS. MORRIS YANKELOWITZ

*Compliments of*  
**THE GRABERS**  
at the  
**COLLEGEVILLE BAKERY**

---

*For Complete News, Read . . .*  
**THE TIMES HERALD**  
★  
*Montgomery County's Great*  
*Home Newspaper*

---

*Congratulations to the Class of 1956 and Our*  
*Sincere Wishes for Success in the*  
*Coming Years*

★  
**COLLEGE CUT RATE**  
Paul N. Lutz, *Manager*  
**5th and Main Streets**

---

**THE COLLEGE DINER**  
★  
**Collegeville, Pa.**

*Compliments of*  
**TAU SIGMA GAMMA**  
**SORORITY**

---

*Compliments of*  
**DELTA MU SIGMA**  
**FRATERNITY**

---

*Compliments of*  
**ALPHA SIGMA NU**  
**SORORITY**

---

*Compliments of*  
**BETA SIGMA LAMBDA**  
**FRATERNITY**

*After the Dance Stop at*  
**LAKESIDE INN**

*Luncheon and Dinner Served  
Daily and Sunday*

★

*Catering to  
Banquets - Private Parties  
Social Functions*

★

**Route 422 - Limerick**

Deitch Reichelderfer and  
"Bud" Becker, Props.

---

**COLLEGEVILLE  
MILLS**

---

*Congratulations to the Class of 1956 and  
Sincerest Best Wishes for a Happy  
and Successful Future*

★

**BRANDT N. EARHART**  
Provident Mutual Life Insurance  
Company  
PHILADELPHIA, PA.

**MAUK MOTORS**

*Plymouth and Chrysler  
Automobiles*

★

1115 N. Broad Street  
WOODBURY, NEW JERSEY

Tilden 5-3418 - 5-3420

---

*We Guarantee All Used Cars  
for Two Years*

*Regardless of Year and Model  
Large Selection of Used Cars  
'56 Pontiacs - G.M.C. Trucks*

★

**AL WILSON PONTIAC, Inc.**  
Hatboro, Pa.

---

*It's New!*

**SCHULZ BUTTERNUT BREAD**  
*In the New Taste Tempting  
Picture Package  
It Puts Appetite Appeal  
in Every Meal*

★

*At Your Grocers  
At Your Home*

★

**SCHULZ BAKING  
COMPANY**

**Pottstown, Pa.**

*Your Friendly Baker for Over Half a Century*

# PEOPLES CLEANERS

*Montgomery County's Most Modern Cleaning Plant*

★

572 East Main Street

Norristown, Pa.

Phone: BRoadway 2-0191

---

## MILLSIDE INN

Where the Perkiomen Crosses

Route 113

RHANS, PA.

★

*Full Course Dinners*

*Banquets*

★

COLlegeville 9-9952

*Compliments*

*of*

**THE INDEPENDENT**

★

Collegetown, Pennsylvania

---

# SUPERIOR TUBE COMPANY

★

Makers of Fine Small Tubing in Many Metals

★

GERMANTOWN PIKE

between

COLLEGEVILLE and EVANSBURG

*Compliments*

*of*

OMEGA CHI  
SORORITY

---

*Compliments*

*of*

PHI ALPHA PSI  
SORORITY

---

*Compliments*

*of*

KAPPA DELTA KAPPA  
SORORITY

---

PERKIOMEN MUTUAL  
INSURANCE COMPANY

*"Property and Inland Marine  
Insurance"*

*Insure with Safety at a Saving*

★

COLLEGEVILLE, PA.

Collegeville 9-3411

---

*America's Oldest (1701) - Air Conditioned*

PERKIOMEN BRIDGE  
HOTEL

Route 422 and 29

*Weddings - Banquets - Parties  
Sunday and Daily Dinners  
and Luncheon*

★

Phone: Collegeville 9-9511

---

*Compliments*

*of*

SCHUYLKILL VALLEY  
LINES

---

MArket 7-8450

**PIERCE & REESE**

*Just Consistently Fine*

MEATS — POULTRY — PROVISIONS  
FROSTED FOODS

★

130-132 North Delaware Avenue  
PHILADELPHIA 6, PA.

ROYAL CROWN

COLA

---

*Compliments*

*of*

DELTA PI SIGMA  
FRATERNITY

*Compliments*

*of*

ZETA CHI  
FRATERNITY

---

*Compliments*

*of*

SIGMA RHO LAMBDA  
FRATERNITY

---

PHOENIX IRON & STEEL COMPANY

STRUCTURAL DIVISION

*Mfg. - Structural Steel*

★

PHOENIX STEEL TUBE DIVISION

*Mfg. - Seamless Steel Tubing*

★

PHOENIX BRIDGE COMPANY

*Steel Fabricating and Erection*

★

PHOENIXVILLE, PENNSYLVANIA



*Compliments*

*of*

THE SPIRIT COMMITTEE

---

COLLEGEVILLE BEAUTY

*and*

GIFT SHOP

*Yarns - Notions - Cards*

★

478 Main Street

COLLEGEVILLE, PA.

Phone: 9-6061

Iona C. Schatz

G. Brandon Donahue, '51

*Alumni Insurance Counselor*

★

559 Broad Street

NEWARK, N. J.

---

*Compliments*

*of*

PHILADELPHIA DAIRY  
PRODUCTS CO., INC.

★

*Manufacturers of*

DOLLY MADISON and ARISTOCRAT  
ICE CREAM

★

Pottstown, Pennsylvania

COMPLIMENTS  
OF  
ALAN WOOD STEEL  
COMPANY

★

Conshohocken, Pennsylvania

---

COMPLIMENTS  
OF  
DUGGAN AND MARCON,  
INC.

PLASTERING—LATHING  
SOUND CONTROL

★

Allentown

Bethlehem

State College, Pennsylvania

THE BRYN MAWR TRUST COMPANY

BRYN MAWR, PA.

*"The Main Line's Own Bank"*

OFFERS EVERY BANKING FACILITY IN OUR  
BANKING, MORTGAGE, SAFE DEPOSIT AND TRUST DEPARTMENTS



*Member Federal Deposit Insurance Corporation*

THE  
COLLEGEVILLE

NATIONAL

BANK

*You'll Find the Most Fabulous  
SMORGASBORD*

*at the*

COLLEGEVILLE INN

*Every Thursday from 5 to 9*

*Also Featuring*

Special Luncheons - Dinners and

Sunday Dinners

*We Cater to All Parties*

*Compliments*

*of*

THE STAFF OF

"THE 1956 RUBY"

*Complete Printing Service*

*Catalogs*

*Price Lists*

*Programs*

*Periodicals*

*Addressing*

*Folding*

*Collating*

*Mailing*

**Smale's Printery**

785 N. Charlotte St., Pottstown, Pa.

Phone: 3914

MERIN STUDIOS

1010 CHESTNUT STREET

Philadelphia, 7, Pa.

★

DEPENDABLE

PHOTOGRAPHY

★

Official

Photographers

to the

“1956 Ruby”

*Compliments of*  
HOBSON HALL

---

*Compliments*  
*of*  
THE THIRD FLOOR  
*of*  
CURTIS HALL

---

AMERICAN CANCER  
SOCIETY  
Philadelphia Division, Inc.

★  
20 South 15th Street  
(Mezzanine)  
Philadelphia 2, Penna.

★  
GIVE TO CONQUER  
CANCER

*Compliments of*  
SUNNYBROOK  
BALLROOM

---

*Compliments of*  
SCHRADER'S ATLANTIC  
STATION

★  
Collegetown, Pa.

---

*Compliments*  
*of*  
MR. O'DONNELL, '34

MR. WEISS, '49

*and*  
MR. QUINLAN, '36

# URSINUS COLLEGE



The Oldest College in  
Montgomery County



The Only Co-Educational College in  
Montgomery County



THE BOARD OF DIRECTORS

A Yearbook Staff with Ideals  
plus  
A Publisher who Cares  
equals  
A Yearbook of Excellence

WE ARE  
QUALIFIED



*Yearbook  
Artisans*

LOcust 4-6171

WILLIAM T. COOKE PUBLISHING, INC.

21 SOUTH 21ST STREET

PHILADELPHIA 3 • PENNSYLVANIA

LETTERPRESS • ENGRAVING • OFFSET LITHOGRAPHY • ART







