



1917

Ursinus College Catalogue, 1917-1918

Office of the Registrar
Ursinus College

Follow this and additional works at: <https://digitalcommons.ursinus.edu/uccatalog>

 Part of the [Higher Education Commons](#), and the [United States History Commons](#)

Click here to let us know how access to this document benefits you.

Recommended Citation

Registrar, Office of the, "Ursinus College Catalogue, 1917-1918" (1917). *Ursinus College Catalogues*. 92.
<https://digitalcommons.ursinus.edu/uccatalog/92>

This Book is brought to you for free and open access by the Ursinusiana Collection at Digital Commons @ Ursinus College. It has been accepted for inclusion in Ursinus College Catalogues by an authorized administrator of Digital Commons @ Ursinus College. For more information, please contact aprock@ursinus.edu.

THE URSINUS BULLETIN

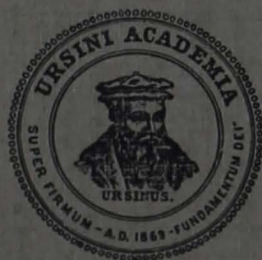
Vol. XVI, No. 1

First Quarter, 1918

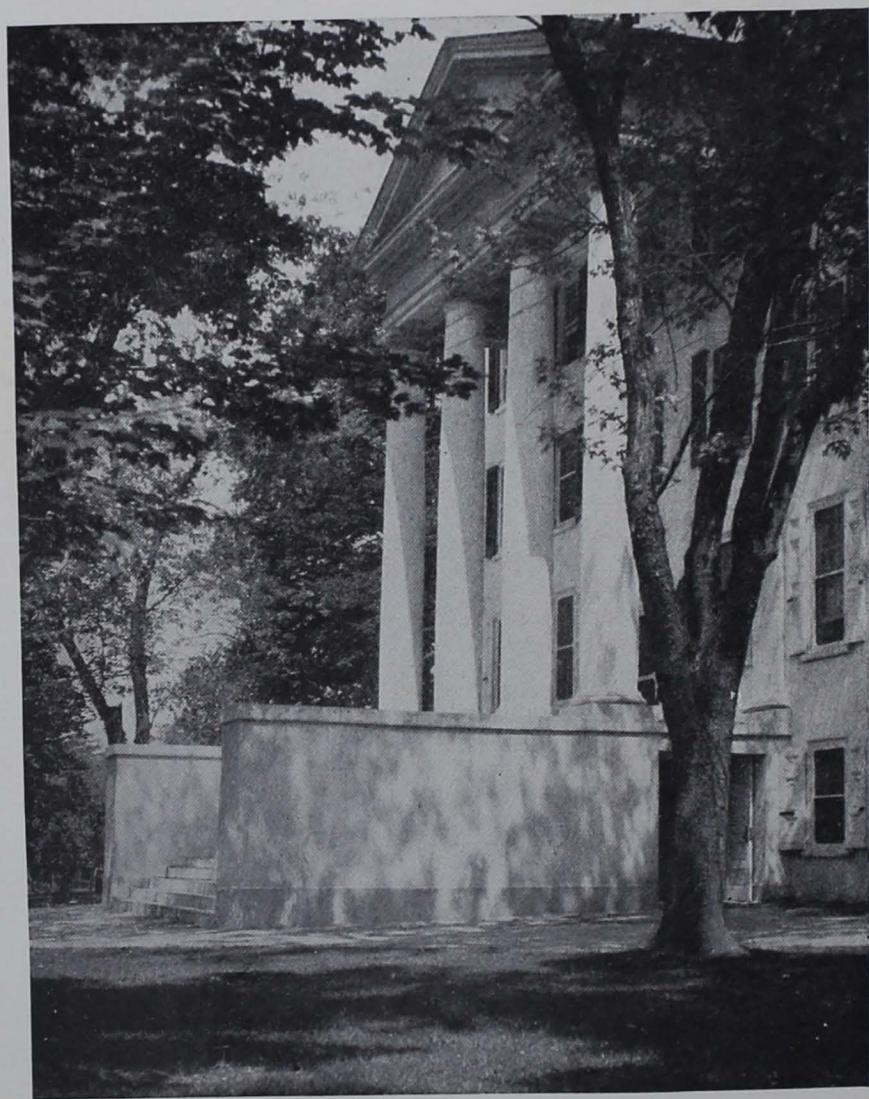
Ursinus College

1917-1918

(WAR TIME EDITION, ABRIDGED)



Entered at the Post Office at Collegeville,
Pennsylvania, as Second Class Mail Matter



FREELAND MEMORIAL

THE URSINUS BULLETIN

Vol. XVI, No. 1

First Quarter, 1918

Ursinus College

1917-18

“An Institution where the youth of
the land can be liberally educated
under the benign influence of
Christianity.”—*The Founders.*

Published by Ursinus College, Collegeville, Pa.

CALENDAR

1918

- May 1, Wednesday, Senior Final Examinations begin.
May 8, Wednesday, Semi-Annual Examinations begin.
May 11, Saturday, Class Day Exercises, 2 p. m.
May 11, Saturday, Junior Oratorical Contests, 8 p. m.
May 12, Sunday, Baccalaureate Sermon, 8 p. m.
May 13, Monday, Examinations for Admission.
May 13, Monday, Annual Meeting of the Directors, 10 a. m.
May 13, Monday, Alumni Meeting, 1 p. m.
May 13, Monday, Alumni Oration, 8 p. m.
May 14, Tuesday, Commencement, 10 a. m.
June 24, Monday, Summer Session begins.
Aug. 2, Friday, Summer Session ends.
Sept. 17, Tuesday, Examinations for Admission.
Sept. 17, Tuesday, Registration and Matriculation of Students.
Sept. 18, Wednesday, Registration and Matriculation of Students.
Sept. 19, Thursday, Instruction begins, 8.45 a. m.
Sept. 19, Thursday, Opening Address, 8 p. m.
Oct. 17, Thursday, Examinations for College standing.
Nov. 27, Wednesday, THANKSGIVING RECESS begins, 4 p. m.
Nov. 30, Saturday, RECESS ends, 8 a. m.
Dec. 20, Friday, CHRISTMAS RECESS begins, 4 p. m.

1919

- Jan. 6, Monday, RECESS ends, 8 a. m.
Jan. 16, Thursday, Semi-Annual Examinations begin.
Jan. 24, Friday, SECOND TERM begins, 8 a. m.
Feb. 12, Wednesday, Founders' Day.*
Feb. 22, Saturday, Washington's Birthday, a holiday.
April 15, Tuesday, EASTER RECESS begins, 4 p. m.
April 23, Wednesday, RECESS ends, 8 p. m.
June 8, Sunday, Commencement Exercises begin.
June 11, Wednesday, Commencement Exercises end.
June 23, Monday, Summer Session begins.
Aug. 1, Friday, Summer Session ends.
Sept. 17, Wednesday, ACADEMIC YEAR begins.

*Date subject to change.

ABRIDGED EDITION

This number of the BULLETIN is an abridged edition. For the history of the College, a full statement of the requirements for admission, description of the courses of instruction, laboratories, library, literary societies, etc., see the URSINUS BULLETIN, Volume 15, Number 1, a copy of which may be had on application.

Ursinus College

Officers of the Corporation

President, HARRY E. PAISLEY
Philadelphia

Secretary, REV. S. L. MESSINGER, D.D.
Trappe, Pa.

Treasurer, J. TRUMAN EBERT
Collegeville, Pa.

THE DIRECTORS

	First Elected	Term Expires
*HON. HENRY W. KRATZ, LL.D., Norristown,	1868	
HENRY T. SPANGLER, D.D., Collegeville,	1884	
JAMES M. ANDERS, M.D., LL.D., Philadelphia,	1894	1919
REV. J. W. MEMINGER, D.D., Lancaster,	1896	1921
HERVEY C. GRESH, Norristown,	1901	1921
EDWARD A. KRUSEN, M.D., Norristown,	1903	1918
REV. PHILIP VOLLMER, PH.D., D.D., Dayton, Ohio,	1905	1920
ELWOOD S. SNYDER, M.D., Lancaster,	1905	1920
HON. ANDREW R. BRODBECK, Hanover,	1905	1920
REV. I. CALVIN FISHER, D.D., Lebanon,	1905	1921
REV. JAMES M. S. ISENBERG, D.D., Philadelphia,	1906	1918
REV. S. L. MESSINGER, S.T.D., D.D., Trappe,	1906	1921
A. D. FETTEROLF, Collegeville,	1906	1921
GEO. LESLIE OMWAKE, Pd.D., Collegeville,	1906	1921
MAYNE R. LONGSTRETH, Esq., A.M., Philadelphia	1907	1922
J. TRUMAN EBERT, Collegeville,	1907	1922
HARRY E. PAISLEY, Philadelphia,	1907	1922
CHARLES H. EDMUNDS, Esq., Philadelphia,	1907	1922
REV. EDWARD F. WIEST, D.D., Norristown,	1909	1919
REV. GEORGE W. HENSON, D.D. Philadelphia,	1911	1921
WHORTEN, A. KLINE, Litt.D., Collegeville,	1912	1922
JOSEPH M. STEELE, Philadelphia,	1913	1919
ABRAHAM H. HENDRICKS, Esq., B.S., Collegeville,	1914	1919
J. F. HENDRICKS, Esq., A.M., Doylestown,	1915	1920
ALVIN HUNSICKER, B. S., New York,	1916	1921
REV. CALVIN D. YOST, A. M., B. D., Collegeville,	1916	1920

* Died, October 4, 1917.

Ursinus College

Committees of the Board of Directors

Executive Committee

A. D. FETTEROLF,	S. L. MESSINGER,
H. E. PAISLEY,	G. L. OMWAKE,
H. T. SPANGLER,	J. T. EBERT,
A. H. HENDRICKS	

Committee on Finance

G. L. OMWAKE,	H. E. PAISLEY,
J. M. S. ISENBERG,	J. T. EBERT,

Committee on Buildings and Grounds

A. H. HENDRICKS,	H. C. GRESH,
A. D. FETTEROLF,	J. T. EBERT,
W. A. KLINE,	E. A. KRUSEN,
G. L. OMWAKE.	

Committee on Government and Instruction

H. T. SPANGLER,	S. L. MESSINGER,
A. D. FETTEROLF,	W. A. KLINE,
G. L. OMWAKE.	

THE ADVISORY COUNCIL

CYRUS H. K. CURTIS, LL.D., Philadelphia

HON. JOHN WANAMAKER, LL.D., Philadelphia

ALBA B. JOHNSON, LL.D., Philadelphia

Ursinus College

Administrative, Financial and Business Officers

GEORGE LESLIE OMWAKE, B.D., Pd.D., *President.*

REV. WHORTEN A. KLINE, B.D., Litt.D., *Dean.*

REV. CALVIN D. YOST, A.M., B.D., *Librarian.*

SARA E. ERMOLD, *Assistant Treasurer and Office Secretary.*

MRS. E. N. ERMOLD, *Principal of Olevian Hall and Superintendent of Dormitories.*

CLARA E. WALDRON, *Principal of Shreiner Hall.*

MRS. C. V. TOWER, *Principal of Trinity Cottage.*

MRS. EMMA G. E. WEBB, *Superintendent, Domestic Department.*

JOYCE HAMM, *Stenographer.*

THE FACULTY

GEORGE LESLIE OMWAKE, B.D., Pd.D.,

President, and Professor of the History and Philosophy of Education.

A.B., Ursinus College, 1898, and A.M., 1901; B.D., Yale University, 1901; Pd.D., Franklin and Marshall College, 1910; Student in Theology, Philosophy and Education, Yale University, 1898-1901; Licensed, 1901; Ursinus College, 1901; Dean, 1903-09; Vice-President, 1909-12; President, 1912; Member of the Society of College Teachers of Education.

REV. WHORTEN A. KLINE, B.D., Litt.D.,

Dean, and Professor of the Latin Language and Literature.

A.B., Ursinus College, 1893; A.M., and B.D., 1896; Litt.D., 1913; Licensed, 1896; Graduate Student in Latin, University of Pennsylvania, 1897-1901; Ursinus College, 1893; Dean, 1909; Member of the Classical Association of the Middle States and Maryland; Member of the Philadelphia Botanical Club.

*J. SHELLY WEINBERGER, LL.D.,

Professor of the Greek Language and Literature, Emeritus.

A.B., Yale College, 1859, and A.M., 1867; LL.D., Ursinus College, 1895; Professor of Ancient Languages, Freeland Seminary, 1859-70; Professor of Latin and Greek, Ursinus College, 1870-87; Professor of the Greek Language and Literature, 1887; Dean, 1892-1903.

REV. JAMES I. GOOD, D.D., LL.D.,

Professor of the English Bible and the History of the Christian Church.

A.B., Lafayette College, 1872, and A.M., 1875; D.D., Ursinus College, 1887 and LL.D., 1911; Student, Union Theological Seminary, 1872-75; Licensed, 1875; Pastor, 1875-1905; Professor of Systematic and Pastoral Theology and Reformed Church History, 1890-1907; Dean, School of Theology, 1892-1907; Ursinus College, 1907.

HOMER SMITH, Ph.D.,

Professor of the English Language and Literature.

A.B., Amherst College, 1891; Graduate Student, University of Pennsylvania, 1892-95; Ph.D., University of Pennsylvania, 1895; Instructor in English, University of Pennsylvania, 1892-98; Professor of English, Kamehameha School, Honolulu, 1899-1901; Acting Professor of English, Amherst College, 1901-03; Ursinus College, 1903; Member of the Modern Language Association.

MATTHEW BEARDWOOD, M.D., Sc.D.,

Professor of Chemistry.

A.B., Philadelphia Central High School, 1890, and A.M., 1895; M.D., Medico-Chirurgical College, 1894; Sc.D., Ursinus College, 1916; Special Student of Chemistry, University of Pennsylvania, 1890-91; Instructor in Chemistry, Medico-Chirurgical College, 1896-99; Lecturer on Clinical Chemistry, 1899-1900; Adjunct Professor of Chemistry, 1900-14; Professor of General Chemistry and Toxicology, 1914-16; Ursinus College, 1903; Member of the American Chemical Society; Member of the Franklin Institute.

* Died, September 12, 1917.

Ursinus College

JOHN WENTWORTH CLAWSON, A.M.,

Professor of Mathematics.

A.B., University of New Brunswick, 1901; A.B., Cambridge University, 1904; A.M., University of New Brunswick, 1905; Lecturer in Astronomy, University of New Brunswick, 1904-05; Assistant in Physics, Ohio State University, 1905-06; Ursinus College, 1907. Member, The Mathematical Association of America.

REV. GEORGE HANDY WAILES, A.M., D.D.,

Professor of the Greek Language and Literature.

A.B., Princeton University, 1894, and A.M., 1896; D.D., Ursinus College, 1913; Student, Princeton Theological Seminary, 1894-97; Licensed, 1896; Pastor, Scots Presbyterian Church, Philadelphia, 1897-1908; Professor of Hebrew and Old Testament Literature, Temple University, 1906; Professor of Theology and Apologetics, 1908; Ursinus College, 1908.

H. ERNEST CROW, A.M.,

Professor of Biology.

A.B., Friends' University, 1909; B.S., Haverford College, 1910; A.M., University of Kansas, 1912; Fellow, Haverford College, 1909-10; Professor of Biology, Penn College, 1910-11; Graduate Student University of Kansas, 1911-12; Ursinus College, 1912.

CARL VERNON TOWER, Ph.D.,

Professor of Philosophy.

A.B., Brown University, 1893; and A. M., 1895; Fellow, Sage School of Philosophy, Cornell University, 1896-97; Ph.D., Cornell University, 1898; Instructor in Philosophy, University of Michigan, 1898-1900; Assistant to the President, Clark University, 1900-01; Professor of Philosophy, Knox College, 1901-02; University of Vermont, 1902-09; Assistant Professor of Philosophy, University of Michigan, 1909-10; Acting Professor of Philosophy, Trinity College, 1912-13; Ursinus College, 1913. Member, American Philosophical Association.

WILLIAM WILSON BADEN, Ph.D.,

Professor of Modern Languages.

Ph.D., Johns Hopkins University, 1892; Research Student, Berlin, Rome and Athens, 1896-98; Professor, University of Idaho, 1899-1907; Ursinus College, 1914.

RAYMOND BURTON MUNSON, A.M.,

Professor of History and Political Science.

Ph.B., Yale University, 1909; and A.M., 1911; Graduate Student, Yale University, 1909-13; Instructor in History and Political Science, Pennsylvania State College, 1913-16; Ursinus College, 1916. Member, American Historical Association.

The Faculty

STURGISS BROWN DAVIS, A.M.,

Professor of Education.

A.B., Ohio Wesleyan University, 1907; A.M., Ohio State University, 1912; Superintendent of Public Schools, Madelia, Minnesota, 1912-1914; Dean, School of Education, Ohio Northern University, 1914-1916; Graduate Student, University of Pennsylvania, 1916-1918; Ursinus College, 1916.

REV. CALVIN DANIEL YOST, A.M., B.D.,

Librarian, and Assistant Professor of German and English.

A.B., Ursinus College, 1891; A.M., 1895, and B.D., 1907; Student, Ursinus School of Theology, 1891-93; Yale University, 1893-94; Principal, High School, Mahanoy City, Pa., 1896-1901; Pastor, 1894-96, 1901-07; General Secretary, Reformed Evangelical and Educational Union, 1907-10; Ursinus College, 1910.

JOHN MYRON JOLLS,

Instructor in Voice Culture and Choral Singing.

Student under the direction of the Tonic Soh Fah College, London, 1893-96; Student in Sight Singing and Voice Culture under Frederick W. Root, 1894-95; Student under Perley Dunn Aldrich, 1899-1908; Teacher of Singing, 1894-1917; Ursinus College, 1908.

KATHERINE E. FETZER,

Director of Physical Training and Instructor in Public Speaking for Young Women.

Student, Philadelphia Normal School of Physical Training, 1905; Chautauqua School of Physical Education, 1907; Harvard Summer School, 1913; Director of Physical Training for Girls, Friends Central School, 1906-16; Instructor in Gymnastics, Chautauqua Summer School, 1915-16; Ursinus College, 1916.

CLARA E. WALDRON,

Instructor in Piano, Harmony and History of Music.

Student under Harry R. Detwiler at Kidd-Key Conservatory of Music, Sherman, Texas, 1903-06, at Bush Conservatory of Music, Chicago, 1906-07, and in Chicago, 1909-10; Effa Ellis Perfield School, Chicago, 1916; Instructor in Piano, Maywood Conservatory of Music, Oklahoma City, Okla.; Galloway College, Searcy, Ark.; College of Industrial Arts, Denton, Texas; Baylor College, Belton, Texas; Ursinus College, 1917.

NELSON KERR THOMPSON, A.B.,

Graduate Director of Athletics.

A.B., Ursinus College, 1912; Instructor and Director of Athletics, Massanutten Academy, Woodstock, Va., 1912-13; Instructor in Manual Training and Director of Athletics, Slippery Rock State Normal School, 1913-16; Ursinus College, 1916.

OFFICERS OF THE FACULTY

Chairman, THE PRESIDENT
Secretary, PROFESSOR SMITH

ADVISERS

Classical Group, Professor Wailes
Mathematical Group, Professor Clawson
Chemical-Biological Group, Professor Crow
Historical-Political Group, Professor Munson
English-Historical Group, Professor Smith
Modern Language Group, Professor Baden

COMMITTEES

Admission and Advanced Standing

THE PRESIDENT	PROFESSOR KLINE
PROFESSOR CLAWSON	PROFESSOR CROW

Library

THE PRESIDENT	THE LIBRARIAN
PROFESSOR SMITH	
Two Representatives of the Alumni Association	

Athletics

PROFESSOR SMITH	PROFESSOR CLAWSON
One Representative of the Board of Directors	
Three Representatives of the Alumni Athletic Club	
Two Representatives of the Student Body	

Scholarships

THE PRESIDENT	PROFESSOR KLINE
PROFESSOR YOST	

Admission

TERMS OF ADMISSION

The unit used in determining the value of a study presented in satisfaction of the requirements for admission represents, in general, *a year's study in the subject in a secondary school, constituting approximately a quarter of a full year's work.* This statement is designed to afford a standard of measurement for the work done in secondary schools. It assumes that the length of the school year is from thirty-six to forty weeks, that the recitation period is from forty to sixty minutes in length, and that there are four or five periods a week; but under ordinary circumstances, a satisfactory year's work in a subject cannot be accomplished in less than one hundred and twenty hours of class-room work. The time element involved in the evaluation of college preparatory work should be given due consideration by teachers and pupils in secondary schools.

Candidates for the Degree of Bachelor of Arts

Applicants for admission intending to present themselves as candidates for the degree of Bachelor of Arts at graduation must present 14.5 units from the following list. The studies printed in heavy-faced type are required:

English	3 units
Latin	4 units
Greek, German or French	2 units
History	1 unit
Algebra	1.5 units
Plane Geometry	1 unit
History, Ancient	1 unit
History, English	1 unit
History, American	1 unit
Advanced Algebra	.5 unit
Solid Geometry	.5 unit
Plane Trigonometry	.5 unit
Physical Geography	.5 unit
Zoölogy	.5 unit
Botany	.5 unit
Physiology	.5 unit
Physics	1 unit
Chemistry	1 unit

Ursinus College

Candidates for the Degree of Bachelor of Science

Applicants for admission intending to present themselves as candidates for the degree of Bachelor of Science at graduation must present 14.5 units from the following list. The studies printed in heavy-faced type are required:

English	3 units
German	2 units
Latin or French	2 units
History	1 unit
Algebra	1.5 units
Plane Geometry	1 unit
Solid Geometry	.5 unit
Plane Trigonometry	.5 unit
Physics or Chemistry	1 unit
History, Ancient	1 unit
History, English	1 unit
History, American	1 unit
Physical Geography	.5 unit
Zoölogy	.5 unit
Botany	.5 unit
Physiology	.5 unit

A candidate offering less than 14.5 units may be admitted with conditions to the extent of 2.5 units, but not more than one of these may be in any one subject.

Students who are not fully prepared to meet the requirements for admission will find adequate opportunity to complete their preparation in the *Summer Session* of Ursinus College.

Examinations for admission will be held on Monday of Commencement week, May 13, and on Wednesday, September 18, 1918, at the opening of the collegiate year. Applicants for examination should present themselves at the Dean's Office in Bomberger Hall.

SPECIAL STUDENTS

Applicants for admission may be received as special students provided they present 10 units of preparatory work. These units must be so distributed as to constitute the usual preparation for the college courses which the applicant desires to pursue.

Admission

When admitted, special students are enrolled as members of the groups they may choose to enter and are under the direction of the regular advisers. Special students must register for at least five standard courses or their equivalent, and are held accountable for the satisfactory completion of courses for which they register. They are subject to the same regulations as other students.

ADMISSION TO ADVANCED STANDING

A student may be admitted to advanced standing at the beginning of any term, not later than the first term of the Fourth year; either

1. BY EXAMINATION, in all the studies required for admission and in the studies which have been pursued by the class he may wish to enter, provided the candidate attain a grade not lower than B in such examination; or

2. FROM ANOTHER COLLEGE, provisionally, to the standing which he held in the college he last attended, upon written evidence of his standing and of the work done.

GOVERNMENT

Students whose application for admission to college has been approved by the Faculty, become members of the institution by matriculating at the Dean's office. Students who have not fully matriculated, but have been admitted to classes provisionally, pending the determination of their standing, are not permitted to represent the college in any public performance or in any intercollegiate contest.

REGISTRATION

All students must register at the opening of the college year for the work of the whole year, and will not be allowed to change their registration or drop courses of study, later than one week after registration day except by special permission of the Faculty. A fee of One Dollar is charged for registration on days other than those appointed for the registration of students in the college calendar.

ABSENCES

A student who is absent from more than one-eighth of the exercises in any course during a term is required to take an extended examination for which a fee of Three Dollars is charged. Absences within the one-eighth limit do not affect a student's record in scholarship. Absences are counted from the first class exercises in any subject, and at the beginning or end of a term and immediately preceding and following a recess they count double. No excuses for absence from class exercises are granted.

ADVISERS

At the beginning of the year the Faculty appoints from its own number Advisers for the students in each of the six Groups in which the courses of instruction are offered. The

Government

students of each Group are amenable to the Adviser of the Group in all matters of conduct, study and discipline. His approval is necessary before a student may register for or enter upon any course of study, or discontinue any work. He is the medium of communication between the Faculty and the students of his Group, and in a general way stands to his students in the relation of friendly counsellor.

GRADES OF SCHOLARSHIP

On the completion of a course the standing of a student is expressed, according to his proficiency, by one of five grades, designated respectively by the letters A, B, C, D, E. Grade E in any course denotes failure.

Each student is required to do a grade of work that shall average C in the courses pursued in any one year; and in the event of his failure to do so, shall be required to repeat in the following year such course or courses as may be necessary to raise the average grade to C, the repeated work to take precedence over any additional courses.

A permanent record is kept of each student's work, and a report of the same is sent to his parents or guardian at the close of each term.

PUBLIC WORSHIP

Students are required to attend religious services in the college chapel each day of recitations, and are expected to attend services on Sunday morning in some adjacent church of their own or their parents' choice as well as the Vesper Services in the college chapel on Sunday afternoons.

When a student shall have been absent from chapel services more than one-eighth of the number of times such services are held during the term, without having been excused, such absences shall be counted as demerits and the student shall be liable to discipline.

Ursinus College

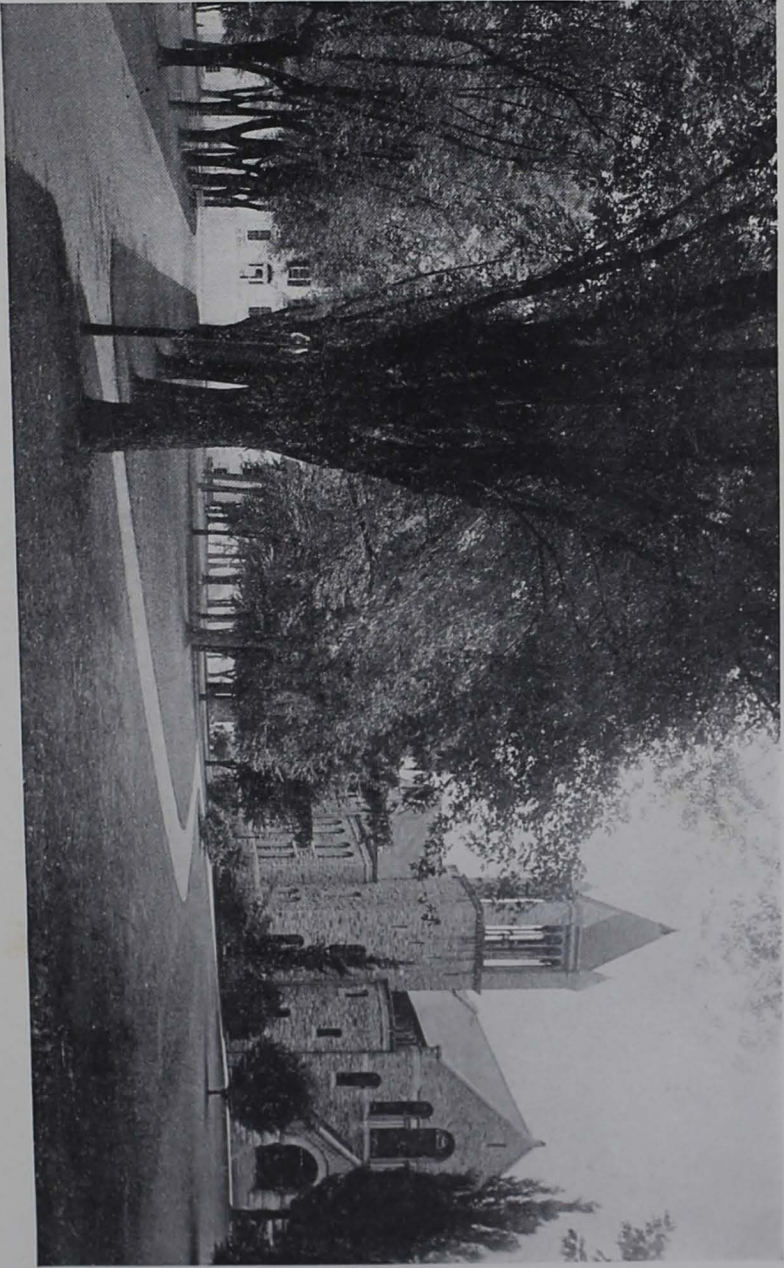
COLLEGE PRINCIPLES

The College is committed both in principle and by tradition to a policy which opposes unnatural distinctions among its students. Secret or exclusive organizations are not permitted. Equal opportunity for all is provided and a wholesome spirit of fraternity throughout the entire body is encouraged. A system of student government, with powers inhering in the several groups and classes and in a central representative body known as the Council, encourages self-control and practice in civil affairs. The institution being organized on the group basis is unhindered by class rivalry and its attendant evils. The aim of the institution is to train its students, through the performance of their social and civic obligations and duties, in those virtues which will fit them for the special responsibilities of educated men and woman in after life.

DOMESTIC LIFE

The college aims to provide thoroughly healthful, wholesome and homelike conditions in the residences for both young men and young women. The boarding department is made an educational asset in the institution. All resident students take their meals in a large, cheery dining room constructed on artistic and thoroughly sanitary lines. The meals are prepared in a spacious, well-lighted, sanitary kitchen with complete modern equipment.

By controlling the conditions under which the students live, the college provides a physical basis for its higher functions that insures not only health of body and joy of life, but greatly promotes mental efficiency and success in intellectual pursuits.



VIEW FROM MAIN STREET

GROUPS OF COURSES

The Courses of Instruction are offered in carefully arranged groups, each comprising (1) dominant subjects, which adapt the courses to the needs of particular classes of students and afford special preparation for professional study; (2) related subjects, to give the breadth and symmetry requisite in a liberal education; (3) studies common to all the groups and required of all students.

A student may substitute, with the approval of his group Adviser and the Faculty, other studies for elective courses laid down in his group; or, at the close of a year, he may change to another group. When a student changes to another group he will, however, receive credit for his required work for graduation only for such of the prescribed courses which he may have completed as are included in the group to which he has received permission to change.

CHOICE OF STUDIES

Before a student may register he must obtain his Adviser's approval of his choice of studies. He must include in the list all his studies, both prescribed and elective, *for the whole year*.

A student is not allowed to register for more than five and one-half courses in any one year, nor for less than four courses in the Fourth year, without special permission of the Faculty. In case of conditions in any year a student, with the consent of his Adviser and the Dean, may take in addition to his regular schedule, conditions equivalent to one full course. Courses to satisfy conditions shall take precedence of regular courses.

REQUIREMENTS FOR GRADUATION

A student must complete, for the degree of Bachelor of Arts or Bachelor of Science, *twenty full courses*, or an equivalent number of courses and half-courses, as follows: First year, five and one-half courses; Second year, five courses; Third year, five courses; Fourth year, four and one-half courses. If at the beginning of any year after the first, his record of work done is complete he may elect an extra course. Such extra course does not count towards the twenty full

Ursinus College

courses required of him for a degree, but may count for department honors. A student electing an extra course must complete it the same as a regular course.

Number of Courses from each Department Prescribed for Graduation in each of the Several Groups

GROUPS		Latin	Greek	English	French	German	Philosophy	Education	Bible	History	Economics	Politics	Mathematics	Science (Laboratory)
Classical	A. B.	3 or 4	3 or 2	2	1	1	1½		1	1	½		1	1
	B. S.													
Mathematical	A. B.	1		2	2	1	1½		1	1	½		3	3
	B. S.			2	2	2	1½		1	1	½		3	3
Chemical— Biological	A. B.	1		2	2	1	1½		1		½		1	5
	B. S.			2	2	2	1½		1		½		2	5
Historical— Political	A. B.	1		2	2	2	1½		1	3	½	1	1	1
	B. S.			2	2	2	1½		1	3	½	1	2	1
English— Historical	A. B.	1		4	2	1	1½	1	1	2	½		1	1
	B. S.			4	2	2	1½	1	1	2	½		2	1
Modern Languages	A. B.	1		2	3 or 2	3 or 4	1½	½	1	1	½		1	1
	B. S.			2	3 or 2	3 or 4	1½	½	1	1	½		2	1

Students who have passed a modern language for admission are required to take only one year additional of the language passed, except in the case of members of the Classical group, who must begin the study of Greek instead, and of all candidates for the degree of Bachelor of Science, who are required to take at least two years additional.

The requirements in modern languages and laboratory science must be fulfilled one year prior to graduation.

Groups 'of Courses

ON THE FOLLOWING PAGES, IN THE TABULATED STATEMENT OF THE GROUPS, THE FIGURES OR LETTERS ATTACHED TO THE SUBJECTS REFER TO THE COURSES OF INSTRUCTION, FOR A FULL DESCRIPTION OF WHICH SEE URSINUS BULLETIN, VOLUME 15, NUMBER I.

PRESCRIBED COURSES ARE PRINTED IN **Heavy-Faced Type**; ELECTIVE COURSES in light-faced type.

Ursinus College

CLASSICAL GROUP

FIRST YEAR

Latin 1
Greek 1 or 2
Mathematics 1
English Comp. 1, *hf.*
English Lit. 1, *hf.*
English Bible 1, *hf.*
French 1; or
German 1
Mathematics 1a, *hf.*
Biology 1, *hf.*
Physics 1
Music 1, *hf.*

SECOND YEAR

Latin 2
Greek 2 or 3
English Comp. 2, *hf.*
English Lit. 2, *hf.*
History 1
French 1
German 2 or 4
Biology 1, *hf.*
Chemistry 1; or
Biology 2
Mathematics 1a, *hf.*; or 2
Music 2

THIRD YEAR

Latin 3; or
Greek 5 or 6
Philosophy 1, 2
Political Science 1, *hf.*
English Bible 2, *hf.*
Chemistry 1
Biology 2 or 3
Physics 2
Political Science 2, *hf.*
Education 1, *hf.*
Education 2, 3
Education 4
English Comp. 3, *hf.*
English Lit. 5, *hf.*
English Lit. 6, *hf.*
English Lit. 7
French 2
German 2 or 4
History 2, *hf.*
Mathematics 1a, *hf.*
Mathematics 2, *hf.*
Music 3 or 4

FOURTH YEAR

Greek 5 or 6; or
Latin 3
Philosophy 5, *hf.*
Latin 5
Church History 2, *hf.*
Education 1, *hf.*
Education 2, 3
Education 4, 5
Education 6
Philosophy 3, 4.
Philosophy 6, *hf.*
Philosophy 7, *hf.*
English Comp. 3, *hf.*
English Comp. 4, *hf.*
English Lit. 5, 6
English Lit. 7 or 8
German 3 or 5
History 2, *hf.*
History 4 or 5
Political Science 2, *hf.*
Mathematics 7, *hf.*
Music 3 or 4

Groups of Courses

MATHEMATICAL GROUP

FIRST YEAR

Mathematics 1; *or* 2, 3
Latin 1; *or* Physics 1
German 2 *or* 4
English Comp. 1, *hf.*
English Lit. 1, *hf.*
English Bible 1, *hf.*
French 1
German 1*
Mathematics 1a, *hf.*
Biology 1, *hf.*
Music 1, *hf.*

SECOND YEAR

Mathematics 2, 3; *or* 4
Latin 2
English Comp. 2, *hf.*
English Lit. 2, *hf.*
History 1
French 1 *or* 2
German 2 *or* 3
Mathematics 1a, *hf.*
Biology 1, *hf.*
Biology 2
Chemistry 1
Music 2

THIRD YEAR

Mathematics 4 *or* 5; *or*
Latin 3
Philosophy 1, 2
Political Science 1, *hf.*
English Bible 2, *hf.*
Education 1, *hf.*
Education 2, 3
Education 4, *hf.*
Chemistry 3
Biology 2 *or* 3
Physics 2
Mathematics 7, *hf.*
Political Science 2, *hf.*
English Comp. 3, *hf.*
English Lit. 5, *hf.*
English Lit. 6, *hf.*
English Lit. 7
French 2
German 4
History 2, *hf.*
Music 3 *or* 4

FOURTH YEAR

Mathematics 5; *or*
Latin 3
Philosophy 5, *hf.*
Mathematics 7, *hf.*
Education 1, *hf.*
Education 2, 3
Education 4, 5
Education 6
Philosophy 3, 4
Philosophy 6, *hf.*
Philosophy 7, *hf.*
English Comp. 3, *hf.*
English Comp. 4, *hf.*
English Lit. 5, 6, 7 *or* 8
Latin 5
History 4 *or* 5
Political Science 2, *hf.*
German 6
Mathematics 7, *hf.*
Biology 7, *hf.*
Music 3 *or* 4

*Prescribed for students who have not offered the subject for admission.

Ursinus College

CHEMICAL-BIOLOGICAL GROUP

FIRST YEAR

Latin 1; *or*
German 2 *or* 4
French 1 *or* 2
Mathematics 1; *or* 2, 3
English Comp. 1, *hf.*
English Lit. 1, *hf.*
English Bible 1, *hf.*
German 1*
Mathematics 1a, *hf.*
Physics 1
Chemistry 1
Biology 1, *hf.*
Music 1, *hf.*

SECOND YEAR

Chemistry 1
Biology 2
French 2; *or*
German 4 *or* 6
English Comp. 2, *hf.*
English Lit. 2, *hf.*
History 1
French 2
German 4 *or* 5
Mathematics 2, *hf.*
Mathematics 3, *hf.*
Biology 1, *hf.*
Music 2

THIRD YEAR

Chemistry 3
Biology 3 *or* 4
Philosophy 1, 2
English Bible 2, *hf.*
Political Science 1, *hf.*
Political Science 2, *hf.*
Education 1, *hf.*
Education 2, 3
Education 4, *hf.*
Physics 2
English Comp. 3, *hf.*
English Lit. 5, *hf.*
English Lit. 6, *hf.*
English Lit. 7
French 2
German 6
History 2, *hf.*
Mathematics 7, *hf.*
Mathematics 5
Music 3 *or* 4

FOURTH YEAR

Biology 4 *or* 3
Philosophy 5, *hf.*
Chemistry 3
Philosophy 3, 4
Philosophy 6, *hf.*
Philosophy 7, *hf.*
Education 2, 3
Education 4, 5
Education 6
English Comp. 3, *hf.*
English Comp. 4, *hf.*
English Lit. 5, 6, 7 *or* 8
French 4
German 4
History 2, *hf.*
History 4 *or* 5
Political Science 2, *hf.*
Mathematics 7, *hf.*
Biology 7, *hf.*
Music 3 *or* 4

*Prescribed for students who have not offered the subject for admission.

Groups of Courses

HISTORICAL-POLITICAL GROUP

FIRST YEAR

Latin 1; *or*
French 1 *or* 2
German 2 *or* 4
Mathematics 1; *or* 2, 3
English Comp. 1, *hf.*
English Lit. 1, *hf.*
English Bible 1, *hf.*
German 1*
Mathematics 2, *hf.*
Physics 1
Chemistry 1
Biology 1, *hf.*
Music 1, *hf.*

SECOND YEAR

History 1
French 2
German 4 *or* 6
English Comp. 2, *hf.*
English Lit. 2, *hf.*
Chemistry 1
Biology 1, *hf.*
Biology 2
Mathematics 2, *hf.*
Mathematics 3, *hf.*
Music 2

THIRD YEAR

History 2, *hf.*
Political Science 1, 2
Philosophy 1, 2
English Bible 2, *hf.*
History 6, *hf.*
Chemistry 1
Chemistry 3
Physics, 2
Biology 2 *or* 3
Education 1, *hf.*
Education 2, 3
Education 4, *hf.*
English Comp. 3, *hf.*
English Lit. 5, *hf.*
English Lit. 6, *hf.*
English Lit. 7
French 2
German 4
Mathematics 4
Music 3 *or* 4

FOURTH YEAR

History 4
Political Science 4, 5
Philosophy 5, *hf.*
Church History 2, *hf.*
Education 1, *hf.*
Education 2, 3
Education 4, 5
Education 6
Philosophy 3, 4
Philosophy 6, *hf.*
Philosophy 7, *hf.*
English Comp. 3, *hf.*
English Comp. 4, *hf.*
English Lit. 5, 6, 7 *or* 8
French 4
German 4
German 6
Mathematics 7, *hf.*
Biology 7, *hf.*
Music 3 *or* 4

*Prescribed for students who have not offered the subject for admission.

Ursinus College

ENGLISH-HISTORICAL GROUP

FIRST YEAR

Latin 1; *or*
German 2 *or* 4
French 1 *or* 2
Mathematics 1; *or* 2, 3
English Comp. 1, *hf.*
English Lit. 1, *hf.*
English Bible 1, *hf.*
German 1*
Mathematics 1a, *hf.*
Physics 1
Chemistry 1
Biology 1, *hf.*
Music 1, *hf.*

SECOND YEAR

English Comp. 2, *hf.*
English Lit. 2, *hf.*
History 1
French 2; *or*
German 4 *or* 6
Latin 2
English 8
Chemistry 1
Biology 1, *hf.*
Biology 2
Mathematics 2, *hf.*
Mathematics 3, *hf.*
Music 2

THIRD YEAR

English Lit. 7 *or* 8
Philosophy 1, 2
History 2, *hf.*
English Bible 2, *hf.*
Education 1, *hf.*
Education 2, 3
Education 4, *hf.*
Political Science 1, *hf.*
Political Science 2, *hf.*
Chemistry 1
Chemistry 3
Physics 2
English Comp. 3, *hf.*
English Lit. 7
English Lit. 5, 6
French 2
Mathematics 7, *hf.*
Mathematics 4
German 4 *or* 6
Music 3 *or* 4

FOURTH YEAR

English Lit. 5, 6; *or* 7; *or*
History 4
Philosophy 5, *hf.*
Education 4, *hf.*
Education 2, 3
Philosophy 3, 4
Philosophy 6, *hf.*
Philosophy 7, *hf.*
English Comp. 3, *hf.*
English Comp. 4, *hf.*
English Lit. 5, 6
English Lit. 7
French 2 *or* 4
German 4
German 6
History 5, *hf.*
Political Science 2, *hf.*
Mathematics 7, *hf.*
Biology 7, *hf.*
Music 3 *or* 4

*Prescribed for students who have not offered the subject for admission.

Groups of Courses

MODERN LANGUAGE GROUP

FIRST YEAR

Latin 1; *or*
French 1 *or* 2
German 2 *or* 4
Mathematics 1; *or* 2, 3
English Comp. 1, *hf.*
English Lit. 1, *hf.*
English Bible 1, *hf.*
German 1*
Mathematics 1a, *hf.*
Physics 1
Chemistry 1
Biology 1, *hf.*
Music 1, *hf.*

SECOND YEAR

French 2; *or*
German 2 *or* 4
English Comp. 2, *hf.*
English Lit. 2, *hf.*
History 1
Latin 2
French 2
Chemistry 1
Biology 1, *hf.*
Biology 2
Mathematics 2, *hf.*
Mathematics 3, *hf.*
Music 2

THIRD YEAR

German 4 *or* 6; *or*
French 4
Philosophy 1, 2
Political Science 1, *hf.*
English Bible 2, *hf.*
Education 1, *hf.*
Education 2, 3
Education 4, *hf.*
Political Science 2, *hf.*
Chemistry 3
Biology 2
Biology 3
Physics 1
History 2, *hf.*
English Comp. 3, *hf.*
English Lit. 5, *hf.*
English Lit. 6, *hf.*
English Lit. 7, *hf.*
Mathematics 7, *hf.*
Music 3 *or* 4

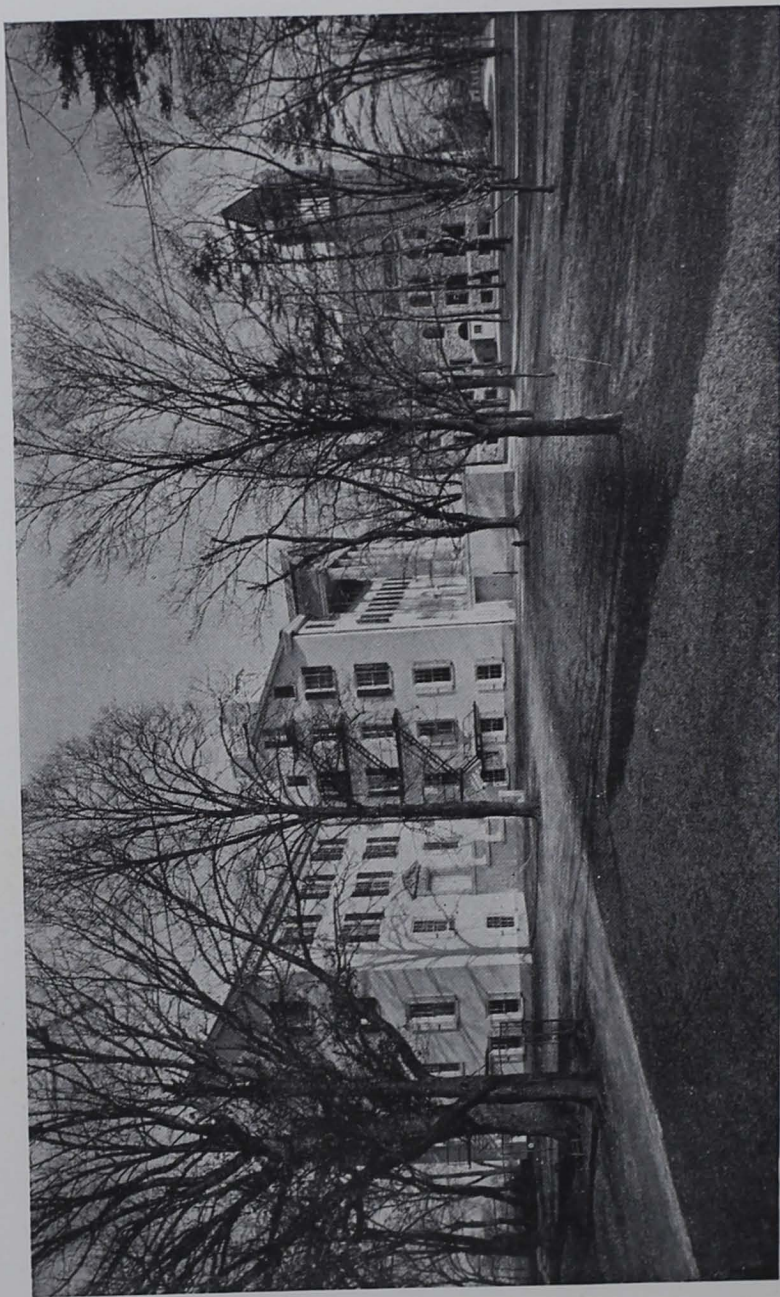
FOURTH YEAR

French 4; *or*
German 6
Philosophy 5, *hf.*
English Comp. 4, *hf.*
English Lit. 5, *hf.*
English Lit. 6, *hf.*
English Lit. 7
English Lit. 8
Philosophy 3, 4
Philosophy 6, *hf.*
Philosophy 7, *hf.*
Education 2, 3
Education 4, 5
Education 6
History 2, *hf.*
History 4 *or* 5
Political Science 2, *hf.*
Mathematics 7, *hf.*
Biology 7 *hf.*
Music 3 *or* 4

*Prescribed for students who have not offered the subject for admission.

HOURS OF COLLEGE COURSES 1918-1919

Hour	Monday	Tuesday	Wednesday	Thursday	Friday
8.00	Philosophy 5, 6 Biology 1 German 5	Latin A French 1 Pol. Sci. 6, 5 Biology 4	Philosophy 5, 6 Biology 1 Mathematics 2 German 5	Latin A French 1 Pol. Sci. 6, 5 Biology, 4	Latin A French 1 Philosophy 5, 6
9.00 Chapel Service Daily					
9.15	Eng. Lit. 2 Philosophy 2, 1 History 4 Mathematics 1 Biology 4	Latin 3 German 1 Physics 1 Biology 2 History 2, 6	Eng. Comp. 2 Philosophy 2, 1 History 4 Mathematics 1	Latin 3 German 1 Physics 2 Biology 2 History 2, 6	Eng. Lit. 2 Philosophy 2, 1 History 4 Mathematics 1
10.05	Latin 1 Pol. Sci. 1, 3 Physics 1 Philosophy 3, 4 Mathematics 3	Greek 1 Eng. Lit. 3, 4 German 2 Mathematics 4 Education 5	Latin 1 Pol. Sci. 1, 3 Physics 1 Philosophy 3, 4 Mathematics 3	Greek 1 Eng. Lit. 3, 4 German 2 Mathematics 4 Education 5	Latin 1 Pol. Sci. 1, 3 Physics 1, Lab. Philosophy 3, 4 Mathematics 2
11.00	Eng. Lit. 1 History 1 Education 2, 3	Latin 2 German 3 Education 1	Eng. Comp. 1 French 5 History 1 Education 2, 3	Latin 2 German 3 Education 1	Eng. Lit. 1 French 5 History 1 Education 2, 3 Physics 1, Lab.
12.00	Latin 2 German 1 Greek 1 German 2 English 7	Greek 2 French 3 English 8	Greek 3 Greek 6 French 3 English 7	Greek 2 French 3 English 8	Greek 3 Eng. Lit. 3, 4 German 4 Eng. Comp. 3
2.00	Biology 4 Mathematics 1a History 2, 6	Greek 6 Physics 1 Biology 2	Eng. Bible 2 Chemistry 1, 2	Greek 6 Physics 1 Biology 2 Mathematics 1a	Eng. Bible 2 Chemistry 1, 2
3.00	Biology 4	Eng. Bible 1 Physics 1 Biology 2	Greek 2 Chemistry 1, 2 Physics 1	Eng. Bible 1 Physics 1 Biology 2	Chemistry 1, 2 Physics 1



MAIN BUILDINGS, LOOKING EASTWARD

BUILDINGS AND EQUIPMENT

BUILDINGS

BOMBERGER MEMORIAL HALL, named for the first President of the College, is a large and imposing structure in the Romanesque style of architecture, built of Pennsylvania blue marble. In this building are the chapel and auditorium, ten commodious and well-lighted recitation rooms, three laboratories, the library, reading room, society halls, and administration offices. It is heated with steam and lighted by electricity. The College is indebted for the building to the generosity of the late Mr. Robert Patterson, of Philadelphia, whose donations to the building fund amounted to \$32,000, and to gifts from numerous other friends.

The CLARK MEMORIAL ORGAN, erected in 1916 as the gift of Mrs. Charles Heber Clark of Conshohocken, Pa., occupies an advantageous position in the front of the chapel in Bomberger Memorial Hall. The organ is a memorial to the late Charles Heber Clark, LL.D.

FREELAND HALL, the original building of Freeland Seminary, DERR HALL, a memorial to the late Reverend Levi K. Derr, D.D., and STINE HALL, a memorial to the late Daniel Stine in grateful recognition of benefactions to the college by his daughter, Mrs. Augustus L. Kaub, constitute a fine group of buildings occupying a position in contiguous arrangement in the center of the campus. During the summer of 1913 these structures were completely remodeled and are now practically new buildings thoroughly adapted to the present needs of the college. The buildings are of stone, four stories in height with a fifth story of dormer rooms. The outer surfaces have a white sand finish while the windows are fitted with green blinds. An imposing portico of masonry and concrete having four classic columns rising to the full height of the building and surmounted with a pediment of terra cotta graces the main entrance. The original cupola, somewhat altered in design,

Ursinus College

remains to provide a permanent place for the college bell which has here swung aloft and summoned students to classes for more than sixty years.

On the ground floors are three communicating dining rooms providing sittings for more than three hundred persons. The largest of these is a memorial to Israel B. and A. Lizzie Shreiner, friends and benefactors of the college. A large, airy kitchen of entirely new structure and containing a complete equipment of new and most approved design, occupies the entire space in the rear court formed by the three buildings. This and the dining rooms are provided with marbleoid floors and are built on strictly sanitary lines. By means of lateral windows and vault lights, open hearths and direct overhead ventilators, these compartments are at all times well lighted and healthful. The remaining space on the ground floors provides store-rooms, and a convenient room, with an entrance on the east side, for the book store and post office. The kitchen is overlaid with a floor of steel and concrete, providing a fine elevated plaza as a thoroughfare of approach from the rear to all three buildings.

The main floor of Freeland Hall, containing four large rooms and a hall, provides facilities for receptions and socials. The other portions of these buildings are fitted up for residential purposes. The rooms are of varying size designed for one or two occupants, a considerable number being arranged en suite. Ample lavatory, bath and toilet facilities are provided on each floor. All parts of these buildings are lighted by electricity and heated with steam.

OLEVIAN HALL, a spacious dwelling on the west campus, is one of the homes for young women. This building has all the appointments of a complete home. The rooms are large, lighted by electricity and heated with steam.

SHREINER HALL, occupying a prominent position fronting on Main Street and facing the College Campus, has recently been enlarged, improved and furnished as a residence hall for young women. This is a three-story brick building, comfortably

Buildings and Equipment

and conveniently arranged for the accommodation of twenty-five students. On the first floor are a reception room, music rooms and office of the principal. The rooms for students vary in size, but are uniformly well lighted and comfortable. The building is heated throughout with steam and provided with electric light.

TRINITY COTTAGE, acquired in 1916 as an additional residence hall for young women, is an attractive brick building, conveniently located in Sixth Avenue, having eighteen rooms and provided with hot and cold water, steam heat and electric light. This building, with the grounds on which it is located, represents a joint benefaction to the college by Henry M. Housekeeper, an elder in Trinity Reformed Church, Philadelphia and Abram G. Grater, an elder in Trinity Reformed Church, Norristown, Pa.

SPRANKLE HALL, a stone mansion on the east campus fronting on Fifth Avenue, is a large residence, three stories in height, with porches and veranda, and contains all of the conveniences of a comfortable home.

SUPERHOUSE, the attractive residence on Main Street opposite the college grounds bequeathed to the College for the use of the professor of Church History by the late Henry W. Super, D.D., LL.D., Vice President and Professor of Mathematics, 1870-1891, and Acting President, 1892-1893, and constituting a fitting memorial of his long and valued services to the institution, has been fitted up, and assigned by courtesy of the beneficiary as a home for the President.

The THOMPSON ATHLETIC CAGE, erected in 1912 as a memorial to Robert W. Thompson, occupies a site on high ground adjacent to the athletic field. This is a spacious and substantial building providing facilities for all forms of indoor athletics and affording opportunities for recreation during the winter months.

The FIELD HOUSE, convenient to the cage and the athletic field, is one story in height, built of native stone, with jagged

Ursinus College

edges and heavy joints, the whole presenting a rustic effect. The house contains dressing rooms, shower baths, toilets, a heating plant, supply room, and office for the Athletic Director.

A central heat and water plant furnishes steam heat for the principal buildings, and distributes excellent water from artesian wells to all the buildings on the premises.

A substantial stone barn, somewhat removed from the college buildings and grounds, and convenient to the fields and gardens, is the center of the agricultural, vegetable and dairy industries of the institution.

EXPENSES

COLLEGE FEES

The fee for instruction, including all items, is \$160 a year. A charge of \$10 is made in the last year to cover expense of graduation. Extra charges to cover the cost of materials for work in the several laboratory courses are as follows:

Chemistry 1.....	\$10	Biology 3.....	\$5
Chemistry 2.....	10	Biology 4.....	10
Chemistry 3.....	10	Biology 5.....	5
Physics 1.....	5	Biology 6.....	5
Biology 2.....	8	Biology 7.....	10

A deposit of five dollars is required of each student to defray any expenses incurred by injury to property. The unexpended balance is returned to the student when he leaves the institution.

A student who is absent from College on account of sickness, or for any other cause, and retains his place in his class, pays the College fee in full during his absence, and payment is required before the student can be admitted to examination. No remittance is allowed on account of withdrawal from the institution during a term.

Expenses

In case of sickness occurring at the institution the College maintains the right to enforce quarantine and to engage the services of an attendant if necessary, but the College will not be responsible for the compensation of physicians, nurses or attendants, which compensation must be provided by the student or his parent or guardian.

ROOM AND BOARD

The charge for a furnished room in Freeland, Derr or Stine halls is from \$100 to \$140 a year; in Olevian Hall, Shreiner Hall or Trinity Cottage, the residences for women, from \$76 to \$146 a year. The charge in all cases, includes heat, light, and attendance. When two students occupy a room the charge is divided between them. A payment of five dollars on account is made by a student when he engages a room, which he forfeits in case he does not occupy the same.

Each student supplies his own towels, two pairs of sheets for a single bed, a pair of pillow cases (19 x 34), a pair of blankets and a bed spread.

The charge for table board is \$180 a year, not including the Christmas and Easter recesses. For less than one term the charge is \$5.25 a week in advance. All students who do not take their meals in their own homes will board at the College Dining Hall.

ACCOMMODATIONS FOR DAY STUDENTS

Two large downstairs rooms have been fitted up in Bomberger Hall for day students, providing comfortable accommodations including lockers. Each day student is charged a nominal locker rental of One Dollar.

PAYMENT OF BILLS

The bills of a student based on the foregoing charges are payable as follows:

At the opening of the term in September	\$102.50
On or before November 24.....	97.75
On or before January 24.....	97.75
On or before March 24.....	97.75

Ursinus College

The bills may vary from the stated amounts in certain instances according to location of rooms. Credits on account of scholarships or service under the Bureau of Self Help are allowed on the November and March bills.

Special fees and Literary Society dues of students must be paid, or their payment secured, before the Saturday preceding the Commencement on which they expect to receive their degrees.

FEES FOR INSTRUCTION IN MUSIC

Private lessons per term of fifteen weeks: piano or voice, twice a week, \$37.50, once a week, \$22.50. The charge for use of piano is \$10 a year.

SCHOLARSHIPS

MUSIC SCHOLARSHIP

For the time being, the College offers a scholarship of Three Hundred Dollars to be used in assisting a student who desires to specialize in music. The scholarship may be divided between two students if in the judgment of the President and the Instructors in the Department of Music, this seems advisable.

PERMANENT SCHOLARSHIPS

The College possesses twenty-three permanent scholarships of one thousand dollars each, yielding \$50 per year. Each scholarship is assigned annually to a student designated by the founder of the scholarship or by the College. The list of these scholarships is as follows:

THE GEORGE WOLFF SCHOLARSHIP, founded by the Rev. George Wolff, D.D., of Myerstown, Pa.

THE WILLIAM A. HELFFRICH SCHOLARSHIP, founded by the Rev. W. A. Helffrich, D.D., of Fogelsville, Pa.

THE NATHAN SPANGLER SCHOLARSHIP, founded by Mr. Nathan Spangler of York, Pa.

THE ANNA M. BOMBERGER SCHOLARSHIP, founded by Miss Anna M. Bomberger, with gifts amounting to \$600, and completed by Mrs. H. S. Bomberger, both of Lancaster, Pa.

Scholarships

THE ABRAHAM WAGNER SCHOLARSHIP, founded under the will of Mr. Abraham Wagner of the Robison Church, Berks County, Pa.

THE CARSON SCHOLARSHIP, founded under the will of Captain John Carson of Newburg, Cumberland County, Pa.

THE KELKER SCHOLARSHIP, founded by Mr. Rudolph F. Kelker of Harrisburg, Pa.

THE KEELEY SCHOLARSHIP, founded by Mr. Joseph Keeley of Spring City, Pa.

THE JOHN B. FETTERS MEMORIAL SCHOLARSHIP, founded by Mrs. Rebecca B. Feters of Uwchland, Chester County, Pa., in memory of her deceased son, who died after a week's attendance at College in September, 1885.

THE JOHN BROWNBACK MEMORIAL SCHOLARSHIP, founded by Mrs. Melinda M. Acker and Miss Mary M. Brownback of Uwchland, Chester County, Pa., in memory of their deceased father.

THE FRANKLIN W. KREMER MEMORIAL SCHOLARSHIP, founded by the Rev. F. W. Kremer, D.D., with gifts amounting to \$500, and completed by the Sunday-school of the First Reformed Church, of Lebanon, Pa., in grateful memory of his thirty-eight years' pastorate, by an endowment of \$500.

THE HENRY FRANCIS SCHOLARSHIP, founded by Mr. Henry Francis of Spring City, Pa.

THE CLEMENTINA R. STEWART SCHOLARSHIP, founded under the will of Miss Clementina R. Stewart of Myerstown, Pa.

THE J. WILLIAM BIRELEY SCHOLARSHIP, founded by Mr. J. William Bireley of Frederick City, Md.

THE JOHN B. AND HORACE A. FETTERS SCHOLARSHIP, founded under the will of Miss Mary M. Brownback of Uwchland, Chester County, Pa.

THE MARY M. BROWNBACK SCHOLARSHIP, founded under the will of Miss Mary M. Brownback of Uwchland, Chester County, Pa.

THE FRANCES KREADY SCHOLARSHIP, No. 1, founded by Miss Frances Kready of Lancaster, Pa.

THE FRANCES KREADY SCHOLARSHIP, No. 2, founded by Miss Frances Kready of Lancaster, Pa.

Ursinus College

THE JOHN H. CONVERSE SCHOLARSHIP, founded by Mr. John H. Converse of Philadelphia.

THE FREELAND G. HOBSON SCHOLARSHIP, founded under the will of Freeland G. Hobson, LL.D., '76, of Collegeville.

THE STAUFFER MEMORIAL SCHOLARSHIP, founded in memory of Robert Ursinus and John Donald Stauffer, deceased children of the pastor, Rev. J. J. Stauffer, by gifts amounting to \$500 from the pastor and members of the Lykens Valley charge, and completed by a bequest of \$500 under the will of Mrs. Elizabeth Ritzman of Gratz, Pa.

THE FRANCIS MAGEE SCHOLARSHIP, founded by the late Francis Magee of Philadelphia.

THE HEIDELBERG SCHOLARSHIP, founded by a member of Heidelberg Reformed Church, York, Pa.

HONORS AND PRIZES

COMMENCEMENT PARTS

Two commencement parts (or honors) are assigned to members of the graduating class; one to the young man attaining the highest grade among the young men; the other to the young woman attaining the highest grade among the young women. Of these two, the one having the higher grade is assigned the Valedictory; the other, the Salutatory.

GRADUATION WITH DISTINCTION

Members of the graduating class, who have shown great proficiency in their entire course may be graduated with distinction if, in the opinion of the Faculty, their attainments warrant such honors. These distinctions are: *summa cum laude*, *magna cum laude*, and *cum laude*, and are given only for unusual excellence in all the subjects pursued by the candidate.

DEPARTMENT HONORS

Students may be graduated with special honors in departments of study in which they have shown exceptional proficiency, and in which they have done extra work as prescribed in the following rules:

Honors and Prizes

1. A candidate for department honors must have the endorsement of the professor in charge of the department in which he expects to try for such honors, and must enroll as a candidate at the Dean's office not later than one month after the opening of the college year in which he expects to receive his degree.

2. A student must have maintained a grade not lower than C in any course previously pursued after the First year and must maintain an average of B while he is pursuing his work as a candidate for department honors.

3. A candidate shall be required to do an amount of work equivalent to one-half course in the department in which he intends to try for honors, in addition to the full number of courses prescribed for graduation; and shall submit to the Faculty a thesis on some subject within the field represented by his extra work. The thesis must be presented at least one week before the time set for the Fourth year final examinations.

JUNIOR ORATORICAL PRIZES

Cash prizes of Twenty Dollars and Fifteen Dollars are offered by Alvin Hunsicker, B. S., of New York City, and the Rev. J. W. Meminger, D. D., of Lancaster, Pa., respectively, both members of the class of 1884, for the best and second best orations delivered in the Junior Oratorical Contest for men on Saturday evening prior to Commencement.

A cash prize of Twenty Dollars is offered by the Women Graduates' Association for the best oration delivered in the Junior Oratorical Contest for young women held also on Saturday evening prior to Commencement.

SCHOLARSHIP PRIZES

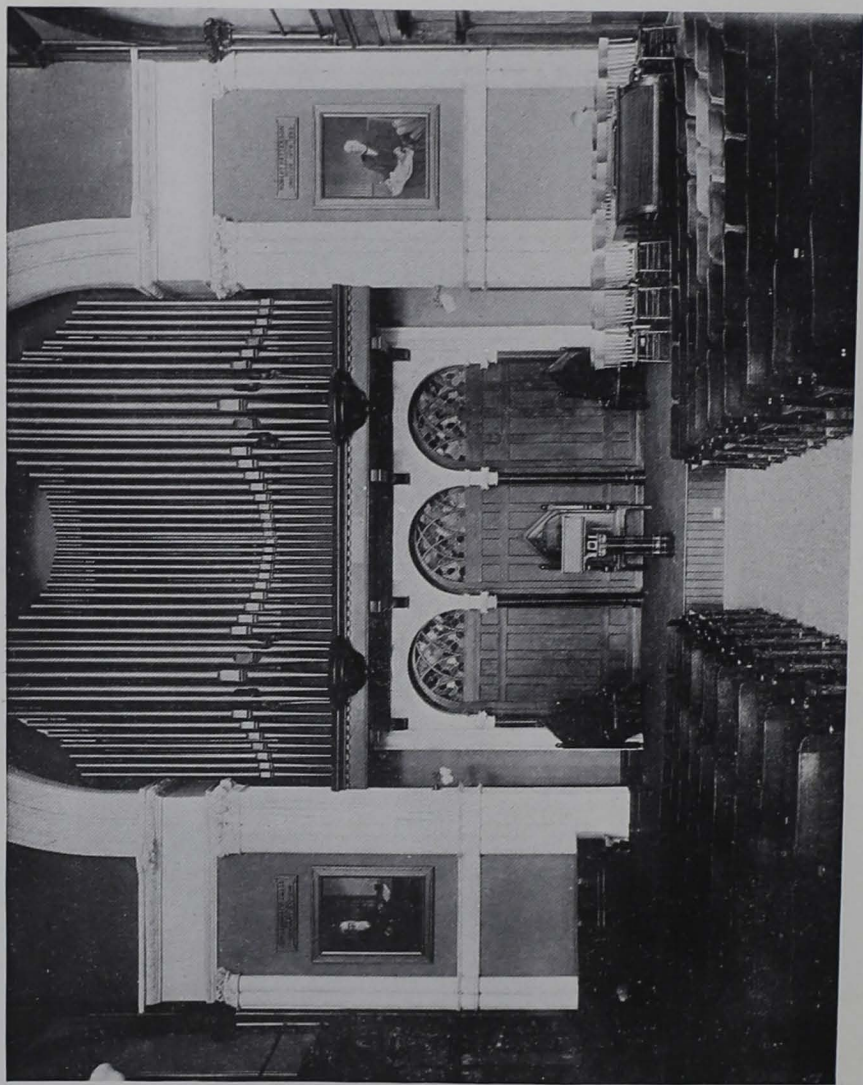
Twenty scholarships are offered annually under special conditions, by the authority of the Directors of the College, as prizes in approved secondary schools. These scholarships are good for four years, provided the holder maintains a creditable record in both scholarship and department. A scholarship entitles the holder to a rebate of Fifty Dollars on each year's bills.

Ursinus College

DEGREES

The College confers the degrees of Bachelor of Arts and Bachelor of Science on all students who have completed the academical exercises appointed for them by the Faculty, and, upon final examination, have been approved as candidates for these degrees. The institution confines itself exclusively to undergraduate work. Candidates for the degree of Master of Arts are referred to university graduate schools.

On academic occasions the College may confer the honorary degrees of Doctor of Divinity, Doctor of Science and Doctor of Laws on persons whose distinguished ability or service may have been deemed worthy of such recognition by the Faculty.



THE CHAPEL
Clark Memorial Organ

LISTS OF STUDENTS

Abbreviations are used to designate residence halls as follows: F. H., Freeland Hall; D. H., Derr Hall; S. H., Stine Hall; Sh. H., Shreiner Hall; O. H., Olevian Hall; Sp. H., Sprinkle Hall; T. C., Trinity Cottage.

STUDENTS IN THE COLLEGE

CLASSICAL GROUP

RAYMOND ROSENBERGER ALTHOUSE, <i>Silverdale</i>	F. H.
Hilltown High School	
ANNA DAVIS BEDDOW	T. C.
<i>Minersville</i>	
Minersville High School	
LAMONT GEORGE BEERS	D. H.
<i>Bath</i>	
Keystone State Normal School	
PURD EUGENE DEITZ	D. H.
<i>York</i>	
York High School	
WALTER HAROLD DIEHL	D. H.
<i>Perkasie</i>	
Perkasie High School	
DANIEL FRANKLIN	F. H.
<i>Mechanics Valley</i>	
Dickinson Seminary	
PAUL CHARLES GAST	F. H.
<i>Lancaster</i>	
Lancaster High School	
ANNA DORETTA GRIM	T. C.
<i>Perkasie</i>	
Perkasie High School	
CLARENCE EDGAR HEFFELFINGER	D. H.
<i>Milton</i>	
Milton High School	
SOLOMON LEANDER HOKE	D. H.
<i>Spring Grove</i>	
York County Academy	
RAY HANDFORT KLINGAMAN	F. H.
<i>Mainville</i>	
Bloomsburg State Normal School	
ELMER ELWOOD LEIPHART	D. H.
<i>Hellam, R. 1</i>	
York County Academy	
EDWIN WARNER LENTZ, JR.	F. H.
<i>Bangor</i>	
Bangor High School	
HERBERT PERRY LONG	D. H.
<i>Allentown</i>	
Keystone State Normal School	
MATILDA JANE MAURER	Sh. H.
<i>Minersville</i>	
Minersville High School	
PHILIP MAY	D. H.
<i>Newark, N. J.</i>	
Barringer High School	
LEOPOLD PAUL MOORE, JR.	F. H.
<i>Philadelphia</i>	
West Philadelphia High School	
JOHN WILLIAM MYERS	D. H.
<i>New Oxford</i>	
Gettysburg Academy	

Ursinus College

ERNEST TYGERT PATTON.....	<i>Broomall</i>	D. H.
Haverford Township High School		
ROY VERNON PEIFFER.....	<i>Stouchsburg</i>	F. H.
Albright College		
MAX CECIL PUTNEY.....	<i>Penn Yan, N. Y.</i>	F. H.
Keuka College		
ANNA NAOMI ROEDER.....	<i>East Greenville</i>	T. C.
Perkiomen School		
ADAM SCHELLHASE.....	<i>Chambersburg</i>	F. H.
Mercersburg Academy		
FRANCIS CHRISTOPHER SCHLATER.....	<i>Broad Axe</i>	F. H.
Perkiomen School		
FRANKLIN IRVIN SHEEDER, JR.....	<i>Spring City</i>	D. H.
Ursinus Summer Session		
DANIEL NASH TIPPIN.....	<i>Blue Bell</i>	D. H.
Cheltenham High School		
HARRY CLAYTON WILDASIN.....	<i>Littlestown</i>	D. H.
Littlestown High School		
RAYMOND EUGENE WILHELM.....	<i>Bernville</i>	D. H.
Bernville High School		
WILLIAM OELSCHLAGER WOLFORD.....	<i>Salfordville</i>	Salfordville
Perkiomen School		
JESSE BAER YAUKEY.....	<i>Waynesboro</i>	D. H.
Waynesboro High School		
*WILLIAM HENRY YOCH.....	<i>Northampton, R. 2</i>	D. H.
Allentown Preparatory School		
ETHELBERT BRETNEY YOST.....	<i>Collegeville</i>	Collegeville
Collegeville High School		

MATHEMATICAL GROUP

LEON HOWARD ANDREWS.....	<i>Pennsburg</i>	F. H.
Perkiomen School		
WILLIAM WILSON BADEN, JR.....	<i>Collegeville</i>	Collegeville
Reed College		
KATHRYN ELIZABETH BARNES.....	<i>Norristown</i>	Norristown
Norristown High School		
RUSSELL CLYDE BARTMAN.....	<i>Royersford, R. 1.</i>	Royersford, R. 1
Collegeville High School		
CARL FREDERICK BOWERS.....	<i>Trappe</i>	Trappe
Collegeville High School		
JOHN ROBERT BOWMAN.....	<i>Lebanon</i>	S. H.
Lebanon High School		
GUILLIAM GEORGE CLAMER.....	<i>Collegeville</i>	Collegeville
Pennsylvania State College		

* Died, February 15, 1918.

Lists of Students

PAULINE BOILEAU DAVIS	<i>Phoenixville</i>	O. H.
Phoenixville High School		
CLARENCE GREEN DILL.....	<i>Philadelphia</i>	Philadelphia
Drexel Institute		
ROBERT DONALD EVANS.....	<i>Lebanon</i>	S. H.
Lebanon High School		
HELEN LACHMAN FRY.....	<i>Norristown</i>	Collegeville
Norristown High School		
MARION GRATER	<i>Collegeville</i>	Collegeville
Collegeville High School		
GRETA PEARL HINKLE.....	<i>Reading</i>	Sh. H.
Reading High School for Girls		
LOIS HOOK.....	<i>Fort Washington</i>	Sh. H.
Cheltenham High School		
SAMUEL WISMER MILLER.....	<i>Quakertown, R. I</i>	D. H.
Quakertown High School		
EMILY RUTH PHILIPS.....	<i>Minersville</i>	Sh. H.
Minersville High School		
BESSIE CATHERINE ROSEN.....	<i>Spring City</i>	O. H.
Spring City High School		
H. JOHN WITMAN	<i>Lebanon</i>	S. H.
Lebanon High School		

CHEMICAL-BIOLOGICAL GROUP

MARY BECHTEL BORNEMAN.....	<i>Norristown</i>	O. H.
Norristown High School		
EDNA MAE BOYD.....	<i>Philadelphia</i>	O. H.
Philadelphia High School for Girls		
BEATRICE BROOKS.....	<i>Palmyra, N. J.</i>	O. H.
Palmyra (N. J.) High School		
JOHN HAROLD BROWNBAC.....	<i>Trappe</i>	Trappe
Collegeville High School		
GILBERT ALFRED DEITZ.....	<i>York</i>	D. H.
York High School		
ALLEN GLASS.....	<i>Freeburg</i>	F. H.
Freeburg High School		
JOHN LLOYD GLASS.....	<i>Scotland</i>	F. H.
Cumberland Valley State Normal School		
DANIEL EDGAR GROVE.....	<i>Shady Grove</i>	S. H.
Cumberland Valley State Normal School		
HERMAN SHELLENBERGER GULICK.....	<i>Perkasie</i>	D. H.
Keystone State Normal School		
DAVID HAVARD.....	<i>Lebanon</i>	S. H.
Lebanon High School		

Ursinus College

CLAUDE HARRINGTON KERSHNER... <i>New Ringgold</i>	F. H.
Tamaqua High School	
HARRY KOHN..... <i>Phoenixville</i>	S. H.
Phoenixville High School	
IRENE FRANCES LAUB..... <i>Bath</i>	T. C.
Bethlehem High School	
FRED RAHN LENTZ..... <i>Bangor</i>	F. H.
Schwenksville High School	
BERTRAM MILLER LIGHT..... <i>Lebanon</i>	S. H.
Lebanon High School	
LLOYD GILBERT LITTLE..... <i>Obelisk</i>	D. H.
Schwenksville High School	
MARK GUY MESSINGER..... <i>Trappe</i>	Trappe
Ursinus College	
WILLIS LLOYD MOYER..... <i>Souderton</i>	F. H.
Lansdale High School	
NICHOLAS JAMES PALADINO..... <i>Jersey City (N. J.)</i>	D. H.
Mt. Herman (Mass.) School	
EMMA MAY SCHWEIGERT..... <i>Philadelphia</i>	T. C.
William Penn High School for Girls	
SANFORD ELIHU VEDDER..... <i>Wellsboro</i>	S. H.
Mansfield State Normal School	
LINNEAUS ARTHUR WALTON..... <i>Norristown</i>	Norristown
Norristown High School	
JOHN FRANCIS WILLAUER..... <i>Spring City</i>	S. H.
Spring City High School	
JOHN CHARLES WOOD..... <i>McKeesport</i>	S. H.
McKeesport High School	
MARION JOSEPHINE XANDER..... <i>Philadelphia</i>	T. C.
William Penn High School for Girls	
STEWART MCKINNEY YEATS..... <i>York</i>	D. H.
York High School	

HISTORICAL-POLITICAL GROUP

JOHN CARL AUSTERBERRY..... <i>Trappe</i>	Trappe
Collegetown High School	
CURTIS CHESTER BICKEL..... <i>Pottstown</i>	Pottstown
Perkiomen School	
WALLACE SEASHOLTZ BREY..... <i>Zieglerville</i>	Zieglerville
Perkiomen School	
CHARLES MATTHEW BROOKE..... <i>Ardmore</i>	S. H.
Haverford High School	
WILLIAM HENRY BROWN..... <i>Sanatoga</i>	Sanatoga
Ursinus Summer Session	

Lists of Students

OLIVER SHELLENBERGER BROWNBACK	<i>Trappe</i>	Trappe
	Collegeville High School	
WILLIAM GEHRIS CLEAVER	<i>Ironbridge</i>	Ironbridge
	Keystone State Normal School	
JOHN CARROLL DEISHER	<i>Spring City</i>	D. H.
	Spring City High School	
JOHN CHARLES DYSON	<i>Trooper</i>	Trooper
	Collegeville High School	
SAMUEL SHELLENBERGER GULICK, JR.	<i>Perkasie</i>	D. H.
	Perkasie High School	
ARTHUR ROY HEFREN	<i>Hallton</i>	D. H.
	Sheffield High School	
DONALD LAWRENCE HELFRICH	<i>Bath</i>	Trappe
	Mercersburg Academy	
FRANK MARION HUNTER	<i>Spring City</i>	S. H.
	Lafayette College	
PAUL HEFFNER ISENBURG	<i>Philadelphia</i>	F. H.
	Mercersburg Academy	
HERMAN HURWITZ KREKSTEIN	<i>Norristown, R. I.</i>	Norristown, R. I.
	Collegeville High School	
LUTHER MONROE LADY	<i>Parkerford</i>	Parkerford
	West Chester State Normal School	
WILBUR KAYLOR MCKEE	<i>Oaks</i>	D. H.
	Norristown High School	
MILES VICTOR MILLER	<i>Elizabethville</i>	S. H.
	Millersburg High School	
CLYDE ANSOM MOSER	<i>Conshohocken</i>	Conshohocken
	Conshohocken High School	
ERNEST RAYMOND PETERMAN	<i>Spring City</i>	D. H.
	Spring City High School	
JOHN KRAUSS RHOADS	<i>Boyertown</i>	Boyertown
	Ursinus Summer Session	
THOMAS HARTLEY RICHARDS	<i>McKeesport</i>	S. H.
	McKeesport High School	
HARVEY CLEVELAND SABOLD	<i>Fort Washington</i>	Fort Washington
	Ursinus Summer Session	
WALLACE CLEMENTS SAVAGE	<i>Philadelphia</i>	F. H.
	West Philadelphia High School	
CLYDE LLEWELLYN SCHWARTZ	<i>Littlestown</i>	D. H.
	Littlestown High School	
CHARLES UNDERKOFFLER SHELLENBERGER	<i>Green Lane</i>	D. H.
	Perkiomen School	

Ursinus College

RAYMOND AXER SPAIDE.....	<i>Graterford</i>Graterford
	Ursinus Summer Session	
ROBERT GOTWALS TRUCKSESS.....	<i>Fairview Village</i>F. H.
	Collegeville High School	
CHARLES SPAIDE UNGER.....	<i>Schwenksville</i>D. H.
	Schwenksville High School	

ENGLISH-HISTORICAL GROUP

STUART GIPE BECK.....	<i>York</i>D. H.
	York High School	
EFFIE STARRETT BRANT.....	<i>Trooper</i>Trooper
	Norristown High School	
GRACE CHANDLER.....	<i>Brownsburg</i>Sh. H.
	Lambertville (N. J.) High School	
MARY BANCROFT CLOSSON.....	<i>Germantown</i>Sh. H.
	Ursinus Summer Session	
RUTH JUSTICE CRAFT.....	<i>Philadelphia</i>T. C.
	Palmyra (N. J.) High School	
NAOMI C. DETWILER.....	<i>Phoenixville</i>Phoenixville, R. 1
	Phoenixville High School	
RUTH ELIZABETH EGGLING.....	<i>Spring City, R. 1</i>Sh. H.
	Pottstown High School	
MILDRED DENTZEL ERNEY.....	<i>Fort Washington</i>Sh. H.
	Cheltenham High School	
ALMA MATILDA FEGELY.....	<i>Trappe</i>Trappe
	Ursinus Summer Session	
ALMA LORAIN FRIES.....	<i>Reading</i>Sh. H.
	Reading High School for Girls	
LEAH A. GINGRICH.....	<i>Lebanon</i>Sh. H.
	Lebanon High School	
DOROTHY SYBIL HARDING.....	<i>Trappe</i>Trappe
	Collegeville High School	
ANNA KATHRYN HIGH.....	<i>Pottstown, R. 2</i>O. H.
	Pottstown High School	
MIRIAM AUGUSTINA HOMER.....	<i>Collegeville</i>Collegeville
	Collegeville High School	
MARY DEEDS JOHNSON.....	<i>Norristown, R. 1</i>Norristown, R. 1
	Collegeville High School	
JESSIE MARION JONES.....	<i>Bangor</i>Sh. H.
	Bangor High School	
MARGARET REBECCA KLICK.....	<i>Lebanon R. 2</i>Sh. H.
	Jonestown High School	
ANNA ALVERDA KNAUER.....	<i>St. Peters</i>O. H.
	West Chester State Normal School	

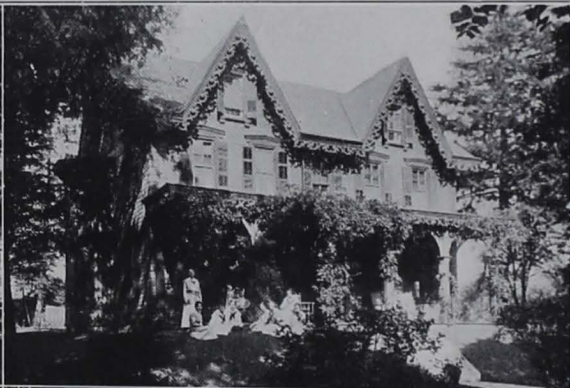
Lists of Students

ISAAC DAVIS KOCHER.....	<i>Pottstown, R. 1</i>	Pottstown
	North Coventry High School		
ELIZABETH MARIE LATTELL.....	<i>Phoenixville</i>	Sh. H.
	Ursinus Summer Session		
LEWIS HARRISON LUDWIG.....	<i>Ironbridge</i>	Ironbridge
	Collegeville High School		
DOROTHY ADELE MENTZER.....	<i>Lebanon</i>	Sh. H.
	Lebanon High School		
JOSEPH LEROY MILLER.....	<i>Parkerford</i>	F. H.
	Spring City High School		
CLARA EDITH MOUL.....	<i>York</i>	Sh. H.
	York High School		
MARY MARGUERITE MOYER.....	<i>Souderton</i>	O. H.
	Souderton High School		
ERNEST YEAKLE RAETZER.....	<i>Philadelphia</i>	F. H.
	Central High School		
LILLIAN ZOE RAYSER.....	<i>Royersford</i>	Sh. H.
	Royersford High School		
ESTHER REBECCA ROTH.....	<i>Boyertown</i>	O. H.
	Boyertown High School		
CHARLES WILLIAM RUTSCHKY, JR.....	<i>Pottstown, R. 5</i>	D. H.
	Pottstown High School		
BEULAH ALLEBACH SCHOLL.....	<i>Green Lane</i>	Green Lane
	Ursinus Summer Session		
DOROTHY ARNET SHIFFERT.....	<i>Pottstown</i>	O. H.
	Pottstown High School		
MARGARET ELIZABETH SLINGHOFF.....	<i>Tower City</i>	O. H.
	Spring City High School		
RUTH ELINOR SNYDER.....	<i>Lebanon</i>	Sh. H.
	Lebanon High School		
MARIE JULIA STETTLER.....	<i>Slatington</i>	T. C.
	Slatington High School		
CARRIE BENNER STYER.....	<i>Royersford</i>	Royersford, R. 2
	Ursinus Summer Session		
DORIS HOLT SUTCLIFFE.....	<i>Spring City</i>	O. H.
	Spring City High School		
LUCILE BERNICE WAGNER.....	<i>Reading</i>	Sh. H.
	Collegeville High School		
ETTA JEFFERIS WICKERSHAM.....	<i>Pottstown</i>	O. H.
	Pottstown High School		
ANNA DELONG WILLEVER.....	<i>Norristown</i>	Norristown
	Norristown High School		
THELMA RITTENHOUSE WOOD.....	<i>Norristown</i>	Norristown
	Norristown High School		

Ursinus College

MODERN LANGUAGE GROUP

ELSIE LEAH BICKEL.....	<i>Lebanon</i>	O. H.
	Lebanon High School	
MIRIAM DORINDA BOESHORE.....	<i>Fredericksburg</i>	O. H.
	Lebanon High School	
CORA LYSINGER DANEHOWER.....	<i>Yerkes</i>	Yerkes
	Collegeville High School	
HELEN FAHRINGER.....	<i>Pottstown</i>	Sh. H.
	Pottstown High School	
EVELYN ESSICK FOX.....	<i>Royersford</i>	Royersford
	Ursinus Summer Session	
MARGARET HESTER HARCLERODE.....	<i>Hopewell</i>	T. C.
	Ursinus Summer Session	
CATHERINE ELIZABETH HEINDEL..	<i>York</i>	Sh. H.
	York High School	
LOLA HARRIET HUTTEL.....	<i>Collegeville</i>	Collegeville
	Collegeville High School	
NORA BEAN KEELY.....	<i>Schwenksville</i>	Sh. H.
	Schwenksville High School	
EMMA SCHAEFFER KIRSCHNER....	<i>Hazleton</i>	T. C.
	Wilson College	
LOUISE MAY KUNKEL.....	<i>Trexler</i>	T. C.
	Perkiomen School	
JESSAMINE ISABEL MACDONALD....	<i>Barrington, N. J.</i>	Sh. H.
	Haddonfield (N. J.) High School	
ELLEN REBECCA RHODS.....	<i>Boyertown</i>	O. H.
	Boyertown High School	
MASIE GLADYS RICHMAN.....	<i>Salem, N. J.</i>	O. H.
	Salem (N. J.) High School	
REBEKAH SADIE SHEAFFER.....	<i>Bareville</i>	T. C.
	Elizabethtown College	
ESTHER G. SHIREY.....	<i>Lebanon</i>	Sh. H.
	Lebanon High School	
OLIVE LORETTA SLAMP.....	<i>Easton</i>	Sh. H.
	Easton High School	
MYRTLE LOWNES WILLIAMS.....	<i>Arcola</i>	Arcola
	Collegeville High School	



SHREINER HALL (residence for women)
TRINITY COTTAGE (residence for women)

OLEVIAN HALL (residence for women)
SUPERHOUSE (president's home)

Lists of Students

STUDENTS IN THE SUMMER SESSION

WILLIAM WALLACE BANCROFT	<i>Philadelphia</i>	S. H.
	Latin, Metaphysics.		
RACHEL E. BEAN.	<i>Norristown</i>	Norristown
	French.		
EDITH ROBERTS BRANDT.	<i>Philadelphia</i>	O. H.
	French.		
LIDA ROBERTS BRANDT.	<i>Philadelphia</i>	O. H.
	French.		
WALLACE SEASHOLTZ BREY	<i>Zieglerville</i>	Zieglerville
	German, English.		
WILLIAM HENRY BROWN.	<i>Sanatoga</i>	Sanatoga
	French, Ethics.		
MARY BANCROFT CLOSSON.	<i>Germantown</i>	T. C.
	Latin.		
PEARL MARIE CONWAY.	<i>Collegeville</i>	Collegeville
	Plane Geometry.		
JOHN RODGER DAVIS.	<i>Oaks</i>	Oaks
	French.		
LEON KEEBLER DETWILER	<i>Norristown</i>	Norristown
	Chemistry.		
LOUISE SAXE EBY.	<i>Hazleton</i>	T. C.
	German, English.		
EVELYN ESSICK FOX	<i>Royersford</i>	Royersford
	German, French.		
HELEN LACHMAN FRY	<i>Norristown</i>	Collegeville
	Latin.		
WEBSTER A. GENSLER.	<i>Blooming Glen</i>	Blooming Glen
	Ethics, Logic, Physics.		
EMORY G. JACOBS.	<i>Nescopeck</i>	S. H.
	English, Latin, Logic.		
MARIAN LYNE.	<i>Arcola</i>	Arcola
	Logic, English.		
MARTHA D. PORTER	<i>Pottstown</i>	Pottstown
	Latin, Plane Geometry.		
HARVEY CLEVELAND SABOLD.	<i>Fort Washington</i>	Fort Washington
	German, English.		
BEULAH ALLEBACH SCHOLL.	<i>Green Lane</i>	Green Lane
	French, Mathematics, German.		
FRANK IRVIN SHEEDER, JR.	<i>Spring City</i>	S. H.
	Latin.		
JOSEPH HOWARD WEISEL.	<i>Perkasie</i>	S. H.
	Chemistry, English.		

Ursinus College

STUDENTS IN MUSIC

Pursuing College Courses

MIRIAM DORINDA BOESHORE.....	<i>Fredericksburg</i>	O. H.
MARY BANCROFT CLOSSON.....	<i>Germantown</i>	Sh. H.
CORA LYSINGER DANEHOWER.....	<i>Yerkes</i>	Yerkes
JOHN CARROLL DEISHER.....	<i>Spring City</i>	D. H.
MILDRED DENTZEL ERNEY.....	<i>Fort Washington</i>	Sh. H.
MARGARET HESTER HARCLERODE.....	<i>Hopewell</i>	T. C.
GRETA PEARL HINKLE.....	<i>Reading</i>	Sh. H.
SOLOMON LEANDER HOKE.....	<i>Spring Grove</i>	D. H.
MIRIAN AUGUSTINA HOMER.....	<i>Collegeville</i>	Collegeville
JESSAMINE ISABEL MACDONALD.....	<i>Barrington, N. J.</i>	Sh. H.
DOROTHY ADELE MENTZER.....	<i>Lebanon</i>	Sh. H.
MARY MARGUERITE MOYER.....	<i>Souderton</i>	O. H.
ELLEN REBECCA RHOADS.....	<i>Boyertown</i>	O. H.
CHARLES UNDERKOFFLER SHELLEN- BERGER.....	<i>Green Lane</i>	D. H.
OLIVE LORETTA SLAMP.....	<i>Easton</i>	Sh. H.
RUTH ELINOR SNYDER.....	<i>Lebanon</i>	Sh. H.
MARIE JULIA STETTLER.....	<i>Slatington</i>	T. C.
CARRIE BENNER STYER.....	<i>Royersford</i>	Royersford
LUCILE BERNICE WAGNER.....	<i>Reading</i>	Sh. H.
THELMA RITTENHOUSE WOOD.....	<i>Norristown</i>	Norristown

Receiving Private Instruction Only

JOHN H. A. BOMBERGER.....	<i>Norristown</i>	Norristown
RUTH JUSTICE CRAFT.....	<i>Philadelphia</i>	T. C.
PURD EUGENE DEITZ.....	<i>York</i>	D. H.
ALMA MATILDA FEGELY.....	<i>Trappe</i>	Trappe
ADA MARGUERITE FISHER.....	<i>Lebanon</i>	Lebanon
LEAH A. GINGRICH.....	<i>Lebanon</i>	Sh. H.
BEATRICE HARDING.....	<i>Trappe</i>	Trappe
CLARENCE EDGAR HEFFELFINGER.....	<i>Milton</i>	D. H.
CATHERINE ELIZABETH HEINDEL.....	<i>York</i>	Sh. H.
FRANK MARION HUNTER.....	<i>Spring City</i>	S. H.
JESSIE MARION JONES.....	<i>Bangor</i>	Sh. H.
EMMA SCHAEFFER KIRSCHNER.....	<i>Hazleton</i>	T. C.
LOUISE MAY KUNKEL.....	<i>Trexler</i>	T. C.
MATILDA JANE MAURER.....	<i>Minersville</i>	Sh. H.

Lists of Students

WILBUR KAYLOR MCKEE.....	<i>Oaks</i>	D. H.
SYLVIA MESSINGER.....	<i>Trappe</i>	Trappe
SAMUEL WISMER MILLER.....	<i>Quakertown, R. 1</i>	D. H.
JOHN WILLIAM MYERS.....	<i>New Oxford</i>	D. H.
STANLEY CASSELBERRY OMWAKE..	<i>Collegeville</i>	Superhouse
ELIZABETH PENNYPACKER.....	<i>Schwenksville</i>	Schwenksville
BESSIE CATHERINE ROSEN.....	<i>Spring City</i>	O. H.
ESTHER REBECCA ROTH.....	<i>Boyertown</i>	O. H.
REBEKAH SADIE SHEAFFER.....	<i>Bareville</i>	T. C.
ESTHER G. SHIREY.....	<i>Lebanon</i>	Sh. H.
MARGARET ELIZABETH SLINGHOFF.	<i>Tower City</i>	O. H.
EMMA POWELL TOWER.....	<i>Collegeville</i>	T. C.
KATHERINE BISBEE TOWER.....	<i>Collegeville</i>	T. C.
HAROLD JOHN WEISS.....	<i>Collegeville</i>	Collegeville
RAYMOND EUGENE WILHELM.....	<i>Bernville</i>	D. H.
MARION JOSEPHINE XANDER.....	<i>Philadelphia</i>	T. C.
JESSE BEAR YAUKEY.....	<i>Waynesboro</i>	D. H.
STEWART MCKINNEY YEATTS.....	<i>York</i>	D. H.

Ursinus College

DIRECTORY OF STUDENTS

In all Departments of the College

The italic letters set opposite the name indicate the group or department to which the student belongs: *Cl.*, Classical group; *M.*, Mathematical group; *C-B.*, Chemical-Biological group; *H-P.*, Historical-Political group; *E-H.*, English-Historical group; *ML.*, Modern Language group; *S.S.*, Summer Session; *Mu.*, Music department.

The numbers 1, 2, 3 and 4 preceding these letters indicate the First, Second, Third and Fourth years respectively in College. *Sat.*, means enrolled in Saturday courses; *Sp.*, means Special Student.

The final letter A. indicates that the student is a candidate for the degree of Bachelor of Arts; the final letter S. indicates that the student is a candidate for the degree of Bachelor of Science.

Althouse, R. R., 2 <i>Cl.</i>A	Davis, J. R., <i>S. S.</i> , <i>H-P.</i>
Andrews, L. H., 2 <i>M.</i>A	Davis, P. B., 2 <i>M.</i>S
Austerberry, J. E., 4 <i>H-P.</i>S	Deisher, J. C., 3 <i>H-P.</i> , <i>Mu.</i>A
Baden, W. W., 3 <i>M.</i>A	Deitz, G. A., 4 <i>C-B.</i>A
Bancroft, W. W., <i>S. S.</i>	Deitz, P. E., 4 <i>Cl.</i>A
Barnes, K. E., 2 <i>M.</i>A	Detwiler, L. K., <i>S. S.</i>
Bartman, R. C., 4 <i>M.</i>A	Detwiler, N. C., 2 <i>E-H.</i>A
Bean, R. E., <i>S. S.</i>	Diehl, W. H., 4 <i>Cl.</i>A
Beck, S. G., 1 <i>E-H.</i>S	Dill, C. G., <i>Sp. M.</i>
Beddow, A. D., 2 <i>Cl.</i>A	Dyson, J. C., 2 <i>H-P.</i>A
Beers, L. G., <i>Sp. Cl.</i>	Eby, L. S., <i>S. S.</i>
Bickel, C. C., <i>Sat.</i> , <i>H-P.</i>	Eggeling, R. E., 4 <i>E-H.</i>A
Bickel, E. L., 4 <i>ML.</i>A	Erney, M. D., 2 <i>E-H.</i> , <i>Mu.</i>A
Boeshore, M. D., 2 <i>ML.</i> , <i>Mu.</i>A	Evans, R. D., 4 <i>M.</i>S
Borneman, M. B., 4 <i>C-B.</i>A	Fahringer, H., 1 <i>ML.</i>A
Bowers, C. F., 2 <i>M.</i>A	Fegely, A. M., 3 <i>E-H.</i>A
Bowman, J. R., 4 <i>M.</i>S	Fox, E. E., <i>Sat.</i> , <i>S. S.</i> , <i>ML.</i>A
Boyd, E. M., 3 <i>C-B.</i>S	Franklin, D., 1 <i>Cl.</i>A
Brandt, E. R., <i>S. S.</i>	Fries, A. L., 2 <i>E-H.</i>A
Brandt, L. R., <i>S. S.</i>	Fry, H. L., <i>S. S.</i> , 1 <i>M.</i>A
Brant, E. S., 4 <i>E-H.</i>A	Gast, P. C., 1 <i>Cl.</i>A
Brey, W. S., <i>Sat.</i> , <i>S. S.</i> , <i>H-P.</i>	Gensler, W. A., <i>S. S.</i>
Brooke, C. M., 2 <i>H-P.</i>A	Gingrich, L. A., 2 <i>E-H.</i>A
Brooks, B., 2 <i>C-B.</i>S	Glass, A., <i>Sp. C-B</i>
Brown, W. H., 4 <i>Sat.</i> , <i>S. S.</i> , <i>H-P.</i> ..A	Glass, J. L., 2 <i>C-B.</i>A
Brownback, J. H., 2 <i>C-B.</i>A	Grater, M., 3 <i>M.</i>A
Brownback, O. S., 2 <i>H-P.</i>A	Grim, A. D., 2 <i>Cl.</i>A
Chandler, G., 3 <i>E-H.</i>A	Grove, D. E., 2 <i>C-B.</i>A
Clamer, G. G., 3 <i>M.</i>S	Gulick, H. S., 4 <i>C-B.</i>A
Cleaver, W. G., <i>Sat.</i> , <i>H-P.</i>	Gulick, Jr., S. S., 4 <i>H-P.</i>A
Closson, M. B., <i>S. S.</i> , 2 <i>E-H.</i> <i>Mu.</i> ..A	Harclerode, M. H., 2 <i>ML.</i> , <i>Mu.</i> ...A
Conway, P. M., <i>S. S.</i>	Harding, D. S., 1 <i>E-H.</i>A
Craft, R. J., 4 <i>E-H.</i>A	Havard, D., 4 <i>C-B.</i>A
Danehower, C. L., 2 <i>ML.</i> , <i>Mu.</i> ...A	Heffelfinger, C. E., 2 <i>Cl.</i>A

Directory of Students

Hefren, A. R., 2 <i>H-P</i>	A	Moser, C. A., 1 <i>H-P</i>	S
Heindel, C. E., 1 <i>ML</i>	A	Moul, C. E., 3 <i>E-H</i>	A
Helffrich, D. L., 1 <i>H-P</i>	A	Moyer, M. M., 1 <i>E-H</i> , <i>Mu</i>	A
High, A. K., 2 <i>E-H</i>	A	Moyer, W. L., 3 <i>C-B</i>	A
Hinkle, G. P., 3 <i>M</i> , <i>Mu</i>	A	Myers, J. W., 2 <i>Cl</i>	A
Hoke, S. L., 1 <i>Cl</i> , <i>Mu</i>	A	Paladino, N. J., 3 <i>C-B</i>	A
Homer, M. A., <i>Sp</i> , <i>E-H</i> , <i>Mu</i> .		Patton, E. T., 1 <i>Cl</i>	A
Hook, L., 2 <i>M</i>	A	Peiffer, R. V., 1 <i>Cl</i>	A
Hunter, F. M., 3 <i>H-P</i>	A	Peterman, E. R., 3 <i>H-P</i>	A
Huttel, L. H., 2 <i>ML</i>	A	Philips, E. R., 3 <i>M</i>	A
Isenberg, P. H., 1 <i>H-P</i>	A	Porter, M. D., <i>S. S.</i>	
Jacobs, E. G., <i>S. S.</i>		Putney, M. C., 4 <i>Cl</i>	A
Johnson, M. D., 4 <i>E-H</i>	A	Raetzer, E. Y., 3 <i>E-H</i>	S
Jones, J. M., 3 <i>E-H</i>	A	Rayser, L. Z., 3 <i>E-H</i>	A
Keely, N. B., 2 <i>ML</i>	A	Rhoads, E. R., 4 <i>ML</i> , <i>Mu</i>	A
Kershner, C. H., 2 <i>C-B</i>	A	Rhoads, J. K., <i>Sat</i> , <i>S. S.</i> , <i>H-P</i> .	
Kirschner, E. S., 2 <i>ML</i>	A	Richards, T. H., 3 <i>H-P</i>	S
Klick, M. R., 1 <i>E-H</i>	A	Richman, M. G., 1 <i>ML</i>	A
Klingaman, R. H., 1 <i>Cl</i>	A	Roeder, A. N., 1 <i>Cl</i>	A
Knauer, A. A., 1 <i>E-H</i>	A	Rosen, B. C., 4 <i>M</i>	A
Kochel, I. D., 4 <i>E-H</i>	S	Roth, E. R., 4 <i>E-H</i>	A
Kohn, H., 1 <i>C-B</i>	S	Rutschky, Jr., C. W., 3 <i>E-H</i>	S
Krekstein, H. H., 3 <i>H-P</i>	A	Sabold, H. C., <i>Sat</i> , <i>S. S.</i> , <i>H-P</i> .	
Kunkel, L. M., 1 <i>ML</i>	A	Savage, W. C., 3 <i>H-P</i>	S
Lady, L. M., <i>Sat</i> , <i>H-P</i>		Schellhase, A. E., 4 <i>Cl</i>	A
Laub, I. F., 1 <i>C-B</i>	A	Schlater, F. C., 1 <i>Cl</i>	A
Lattell, E. M., 3 <i>E-H</i>	A	Scholl, B. A., <i>Sat</i> , <i>S. S.</i> , <i>E-H</i> .	
Leiphart, E. E., 3 <i>Cl</i>	A	Schwartz, C. L., 1 <i>H-P</i>	A
Lentz, Jr., E. W., 1 <i>Cl</i>	A	Schweigert, E. M., 3 <i>C-B</i>	S
Lentz, F. R., <i>Sp</i> , <i>C-B</i>		Sheaffer, R. S., 3 <i>ML</i>	A
Light, B. M., 2 <i>C-B</i>	S	Sheeder, F. I., <i>S. S.</i> , 1 <i>Cl</i>	A
Little, L. G., 1 <i>C-B</i>	A	Shellenberger, C. U., 1 <i>H-P</i> , <i>Mu</i> ..	A
Long, H. P., 3 <i>Cl</i>	A	Shiffert, D. A., 3 <i>E-H</i>	A
Ludwig, L. H., 1 <i>E-H</i>	A	Shirey, E. G., 1 <i>ML</i>	A
Lyne, M., <i>S. S.</i>		Slamp, O. L., 2 <i>ML</i> , <i>Mu</i>	S
Macdonald, J. I., 3 <i>ML</i> , <i>Mu</i>	A	Slinghoff, M. E., 4 <i>E-H</i>	A
Maurer, M. J., 3 <i>Cl</i>	A	Snyder, R. E., 1 <i>E-H</i> , <i>Mu</i>	A
May, P., 3 <i>Cl</i>	A	Spaide, R. A., <i>Sat</i> , <i>H-P</i> .	
McKee, W. K., 4 <i>H-P</i>	A	Stettler, M. J., 1 <i>E-H</i> , <i>Mu</i>	A
Mentzer, D. A., <i>Sp</i> , <i>E-H</i> , <i>Mu</i> .		Styer, C. B., 4 <i>E-H</i> , <i>Mu</i>	A
Messinger, M. G., <i>Sat</i> .		Sutcliffe, D. H., 2 <i>E-H</i>	A
Miller, J. L., 2 <i>E-H</i>	A	Tippin, D. N., 2 <i>Cl</i>	A
Miller, M. V., 2 <i>H-P</i>	A	Trucksess, R. G., 3 <i>H-P</i>	A
Miller, S. W., 4 <i>M</i>	A	Unger, C. S., 4 <i>H-P</i>	A
Moore, L. P., 2 <i>Cl</i>	A	Vedder, S. E., 4 <i>C-B</i>	S

Ursinus College

Wagner, L. B., 2 <i>E-H</i> , <i>Mu</i>A	Witman, H. J., 4 <i>M</i>S
Walton, L. A., 2 <i>C-B</i>S	Wolford, W. O., 1 <i>Cl</i>A
Weisel, J. H., <i>S. S.</i>	Wood, J. C., 3 <i>C-B</i>S
Wickersham, E. J., 3 <i>E-H</i>A	Wodd, T. R., 1 <i>E-H</i> , <i>Mu</i>A
Wildasin, H. C., 1 <i>Cl</i>A	Xander, M. J., 1 <i>C-B</i>A
Wilhelm, R. E., 4 <i>Cl</i>A	Yaukey, J. B., 3 <i>Cl</i>A
Willauer, J. F., 3 <i>C-B</i>S	Yeatts, S. M., 3 <i>C-B</i>S
Willever, A. D., 4 <i>E-H</i>A	Yoch, W. H., 4 <i>Cl</i>A
Williams, M. L., <i>Sat</i> , <i>ML</i>	Yost, E. B., 2 <i>Cl</i>A

GENERAL SUMMARY, 1917-1918

STUDENTS IN THE COLLEGE

Classical Group	32
Mathematical Group	18
Chemical-Biological Group	26
Historical-Political Group	29
English-Historical Group	40
Modern Language Group	18
	163

STUDENTS IN THE SUMMER SESSION AND SATURDAY COURSES

27

STUDENTS IN MUSIC

52

— 242

Deduct for names repeated 57

Total 185

Prizes, Honors and Degrees

PRIZES, HONORS AND DEGREES

Awarded in 1916-1917

PRIZES

Junior Oratorical Prizes for Men—PURD EUGENE DEITZ, MAX
CECIL PUTNEY.

Junior Oratorical Prize for Women—RUTH JUSTICE CRAFT.

Havilah McCurdy Bennett Essay Prize—MAX CECIL PUTNEY.

Scholarship Prizes:

BANGOR HIGH SCHOOL—EDWIN WARNER LENTZ, JR.
COLLEGEVILLE HIGH SCHOOL—DOROTHY SIBYL HARDING.
LEBANON HIGH SCHOOL—ESTHER G. SHIREY.
NORRISTOWN HIGH SCHOOL—THELMA RITTENHOUSE WOOD.
PERKIOMEN SCHOOL—ANNA NAOMI ROEDER.
SPRING CITY HIGH SCHOOL—FRANKLIN IRVIN SHEEDER, JR.
WILLIAM PENN HIGH SCHOOL FOR GIRLS, PHILADELPHIA—
MARION JOSEPHINE XANDER.
YORK COUNTY ACADEMY—SOLOMON LEANDER HOKE.
YORK HIGH SCHOOL—CATHERINE ELIZABETH HEINDEL.
MUSIC SCHOLARSHIPS—LUCILE BERNICE WAGNER, DOROTHY
ADELE MENTZER.

Gold Cross for Men, offered by REV. O. P. SCHELLHAMER, D.D.—
JOHN H. A. BOMBERGER.

Gold Cross for Women, offered by REV. I. N. PEIGHTEL, D.D.—
MARIAN HARLEY REIFSNEIDER.

HONORS

(Department Honors)

English—UARDA ALMA SHOEMAKER, EARL BEAN MOYER.

History—PAUL JEROME LEHMAN.

(Commencement Parts)

Valedictory Oration—UARDA ALMA SHOEMAKER.

Salutatory Oration—JOHN H. A. BOMBERGER.

Ursinus College

DEGREES

Bachelor of Divinity (in Course)—ALBERT GIDEON PETERS, A.B.

Bachelor of Arts, *Cum Laude*—MARIAN HARLEY REIFSNEIDER,
BEULAH MAY SCHAEFFER, UARDA ALMA SHOEMAKER.

Bachelor of Arts—HARRY BARTMAN, JOHN H. A. BOMBERGER,
WAYNE ALLEN BROWN, AMY EDNA BUTLER, JACOB
HENRY CLARK, ANDREW MARTIN DIXON, MABEL JANE
FAULKNER, JACOB SETH GROVE, LEO IRVING HAIN, SADIE
H. HUNSICKER, HARRY SHERMAN KEHM, PAUL JEROME
LEHMAN, JESSIE IZORA LEIBY, FRANCINA WETHERILL
MCMENAMIN, MARK GUY MESSINGER, EMILY KATHRYN
MILLER, EARL BEAN MOYER, JAY STANLEY RICHARDS,
CLARENCE WILLIAM SCHEUREN, MILES MILTON SPAN-
NUTH, HAROLD JOHN WEISS, WILLIAM JAMES WINTYEN,
LLOYD OSCAR YOST, PRESTON EDGAR ZIEGLER.

Bachelor of Science—CHARLES EDWARD BELL, GUY ALLISON KOONS,
HERBERT GERHARD PETERSON.

INDEX

	PAGE		PAGE
Absences	16	Mathematical	23
Academic Year	2	Modern Language	27
Admission	13-15	Historical-Political Group	25
Examinations for	13	Honors	36, 52
Terms of	13, 14	Hours of College Courses	28
To Advanced Standing	15	Junior Oratorical Contests	37
Advisers	16	Junior Prizes	37
Advisory Council	7	Mathematical Group	23
Bills, <i>see</i> EXPENSES.		Matriculation	16
Board	33	Modern Language Group	27
Bomberger Memorial Hall	29	Music, Private Lessons	34
Buildings	29-32	Music Scholarship	34
Calendar	2	Olevian Hall	30
Chemical-Biological Group	24	Payments	33
Classical Group	22	Prizes, Junior Oratorical	37
College Principles	18	High School Scholarships	37
Commencement Day	2	Public Worship	17
Committees of Board of Directors	6	Registration	16
Degrees	38	Requirements for Graduation	19
Bachelor of Arts	19, 38	Residence of Students	29-31
Bachelor of Science	19, 38	Rooms	33
Derr Hall	29	Scholarship, Grades	17
Directors of the College	5, 6	Scholarship Prizes	37
Directory of Students	50-52	Scholarships, List of	34-36
Domestic Life	18	Shreiner Hall	30
Dormitories	29-32	Special Students	14
English-Historical Group	26	Sprankle Hall	31
Expenses	32-34	Stine Hall	29
Faculty	9-11	Students, Lists of	39-49
Freeland Hall	29	College	39-46
Government	16-18	Music	48, 49
Graduation	19, 38	Summary	52
Groups of Courses	19-27	Summer Session	47
Chemical-Biological	24	Directory of	50-52
Classical	22	Superhouse	31
English-Historical	26	Terms and Vacations	2
Historical-Political	25	Tuition, <i>see</i> EXPENSES.	

THE URSINUS BULLETIN

- I First Quarter. URSINUS COLLEGE
- II Second Quarter. THE SUMMER SESSION
- III Third Quarter. SPECIAL ANNOUNCEMENTS
- IV Fourth Quarter. REPORTS OF OFFICERS

Copies of any of the above publications may be had on application to the Secretary of Ursinus College, Collegeville, Pa.