

INDEX...

editorials3
 lifestyle4
 sports8
 classifieds12

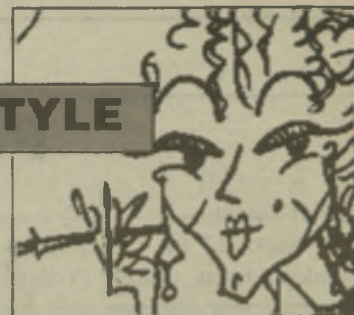
WEATHER

Today:
 Chance of storms 59/78°
 Friday:
 Partly cloudy 61/83°
 Weekend:
 Chance of storms 59/80°

SOUTHERN ILLINOIS UNIVERSITY EDWARDSVILLE

At the Alestle

ALTON, EAST ST. LOUIS & EDWARDSVILLE

LIFESTYLE

Alli's comin' to get cha!
 Meet Alli Khat (the super senior with the sass) the Alestle's new advice columnist. For story, see page 6.

◆ THURSDAY, SEPTEMBER 24, 1998

SOUTHERN ILLINOIS UNIVERSITY EDWARDSVILLE

Vol. 51, No. 9 ◆



Jill Stevens/Alestle

Dave Dunbar, worker from the general contractors who are building the Engineering Building, matches the bricks for the new building. The expansion of the campus was one of the focuses of the chancellor's address to the university.

Freshman numbers up; black enrollment down

Boom continues for fifth straight year

BY TAMARA KANO
 NEWS STRINGER

Over the past five years, Southern Illinois University Edwardsville has reported a continuous overall increase in academic enrollment. The figures are collected every year after the second week of classes.

One of the categories in which enrollment has grown significantly since 1994 was in total headcount. In 1994 SIUE had 10,945 students, compared to this year's total of 11,520. Some other areas that presented a meaningful increase are students enrolled full-time, the size of the incoming freshman class, and the number of new freshmen enrolled. An increase of 514 students resulted in a full-time

enrollment figures of 7,848 — a 7 percent rise over last year. The number of freshmen at SIUE has grown from 1,911 for the 1994-1995 academic year to 2,059 for the 1998-1999 academic year, and the number of new freshmen went from 1,019 to 1,415 during the same period.

According to Provost David Sill, SIUE has been working very hard to improve the quality of its programs.

"We have been hiring new teachers, specifically for general education courses, which freshmen sign up for," Sill said.

Sill believes that another reason for the increase of incoming freshmen is the completion of Prairie Hall, the university's second residence hall.

see ENROLLMENT, page 2

SIUE looking toward future

Chancellor delivers "State of the University" address filled with optimism for the campus

BY DANIELLE BELTON
 EDITOR IN CHIEF

SIUE Chancellor David Werner's "State of the University Address" Wednesday focused on the many increases and accomplishments at the university as well as SIUE's future.

Enrollment has made strides with the increased number of students living on campus and a record class of new freshmen. Werner said that enrollment is on an upward trend with a 12 percent increase over last year.

He gave credit to the recruitment staff and the new developments in housing for the increases in enrollment. According to Werner, there are now 2,288 students living on campus. Werner said there is now "remarkable balance between residential and commuter students.

"Full-time students are up 7 percent," Werner said. "Students are focusing more on school and

less on other pursuits."

Werner said that although the numbers in each freshman class have been steadily increasing, there is still room for transfer students.

"Transfer students are and will continue to be a very important part of our student body," Werner said.

Werner said that SIUE's revenue increase coincides with the strong Illinois and U.S. economies.

State appropriations make up 45.7 percent of the budget, totaling \$60.6 million. Tuition, student fees and housing income total \$44.9 million and make up 33.9 percent of the budget. Also, SIUE received funds for salaries, for the library, off-campus nursing facilities and other activities on campus.

The healthy budget will allow the continuation of the growth and development plans for this campus, Werner said.

see WERNER, page 2



Bob Fehringer/Alestle

SIUE chancellor David Werner giving address.

Address goes over well with faculty, staff

BY DANIELLE BELTON
 EDITOR IN CHIEF

Reactions were favorable to SIUE Chancellor David Werner's "State of the University" address Wednesday.

More than 300 people attended the speech. And, members of the audience said Werner's address was well prepared and well organized.

The speech, which gave an overall sense of well-being about the university, caused members of the audience to smile and applaud often.

"Overall, this campus is strong," said Special Service Academic Advisor Danita Mumphard. "I like the way its growing."

Mumphard said she was impressed by the way the university has come up with new ideas to help accommodate the growth.

Lela M. DeTroy and Dianne Koehnecke of the SIUE School of Education also had favorable things to say about the chancellor's speech.

"I was especially encouraged about the movement toward more doctoral programs," said DeTroy, chair of curriculum and instruction.

see REACTION, page 2

Decline in black numbers is a mystery

BY SETH TREPTOW
 NEWS STRINGER

The number of black undergraduate students enrolled at SIUE has decreased from 1,408 in 1993 to 1,088 in 1997, and nobody really knows why.

To add to the mystery, the number and percentage of black students receiving degrees has increased and for the fifth consecutive year overall undergraduate enrollment has increased from 8,610 to 8,707 between 1996 and 1997.

Liz Tarpey, assistant to the provost and author of SIU's 1998 Annual Report on Minorities, Women, and Disabled Students, Faculty, and Staff Participation, said that the number of black

first-time freshmen has remained approximately the same over the last five years at approximately 200.

In 1993, blacks represented 16 percent of the undergraduate student body. In 1997, that number had dropped to 12 percent. Possible explanations for this four point drop include increased graduation rates, first-time freshmen and transfer student enrollment, financial aid resources and population density.

"We looked at whether or not there has been a shift in the population density within our region, but there hasn't been, so that's been maintained at a fairly stable rate over the last five years," Tarpey said.

see BLACKS, page 2

Police incidents

Theft Under

On Sept. 22 at 4:40 p.m., a student from Cougar Village reported that someone stole his clothes out of a dryer at the Commons' laundry room. The clothes are valued at \$50.

Hit and Run Traffic Accident

On Sept. 17 at 12:30 p.m., a student reported that someone struck her car on the rear passenger side while it was parked in Lot 13. There are no suspects or witnesses.

DUI

On Sept. 19 at 1:13 a.m., police arrested Damien Irving, 21, of Glen Carbon for DUI, DUI over .08 and improper lane usage. Irving could not post bond and was transported to the Madison County Jail.

Ambulance Call

On Sept. 19 at 1:43 a.m., police and ambulance responded to a

call at Woodland Hall where a student was having sharp pains in her side and a severe headache. The student was transported to Anderson Hospital by Edwardsville Ambulance Service.

On Sept. 21 at 8:37 a.m., police and ambulance responded to a call at Alumni Hall where a student was having a reaction to insulin. The student was transported to Anderson Hospital by Edwardsville Ambulance Service.

Traffic Accident

On Sept. 19 at 10:09 p.m., police investigated an accident in parking Lot B. John Aebischer, 17, of Troy was backing out of a parking space when his car jumped out of gear and he struck a parked car belonging to James Bunn of St. Charles. No tickets were issued.

Criminal Defacement

On Sept. 20 at 3:44 a.m., a student reported that someone slashed the right front tire on her car while it was parked in Cougar Village Lot 5K. Police are continuing their investigation.

On Sept. 21 at 10:22 p.m., a student from Cougar Village reported that someone had keyed his car and flattened two tires while it was parked in Lot 4D. Police are continuing their investigation.

Arrest

On Sept. 22 at 12:10 a.m., police arrested Megan Breidegam, 18, of Edwardsville and Barrington Gates, 17, of Edwardsville for possession of cannabis. Both were issued notices to appear and were released.

REACTION

from page 1

DeTroye said she likes the increase in residential students and said she feels very encouraged about the possibility of more doctoral programs.

Koehnecke agreed with DeTroye about the programs and said, "I absolutely love the idea about the new residence hall.

"Making this a campus instead of just a commuter school is very important," Koehnecke said.

She mentioned that although Werner announced that the student to faculty ratio was low at 14.9, in the education department the classes are often filled with as many as 30 students per teacher. As an assistant professor who teaches children's literature, Koehnecke said she'd like to see

a significant drop in class size.

Mumphard also worried about the chancellor's comment on the possibility of SIUE raising its academic standards.

"If there are stricter policies, it could cut back on diversity," Mumphard said.

Mumphard mentioned that Special Services often works with students who need the tutoring that her department provides. With higher standards, Mumphard fears these same students might have a harder time getting accepted to SIUE.

Barbara Havis, an assistant professor of curriculum in the School of Education, said she believes the university still has "a lot of work to do." Although Havis admitted the university has shown significant progress, she said there is still work to be done to get SIUE to the next level.

more housing is attracting many new students," Sill said.

In addition to freshmen enrollment, gains were made in graduate students' registration. Graduate enrollment on the campus increased from 1,772 students in 1994 to 1,897 in 1998, although this increase has

considerably," Werner said.

Citing the new Engineering Building, Werner went on to speak of his commitment to rehabbing the East St. Louis Center, promising a new building for the site by 2001. He said that we need "a facility equal in quality in East St. Louis."

In other building developments, Werner said the growth is positive and that there are plans for a third residence hall to be built by 2001.

On the downside, Werner indicated enrollment of minority students is down, with the

"We don't want to take a back seat to any other university," Havis said. "We do a creditable job."

Havis was also impressed by the chance of SIUE increasing its degree and doctoral programs. She hopes the improvements will help SIUE to maintain an identity separate from its sister school at Carbondale. Havis said people often confuse the schools. She said she wants SIUE to get credit for its programs.

Havis and Koehnecke also commented on how many students missed the address. Havis felt that classes should have been canceled for an event of this importance. Havis said she felt many students and faculty missed out.

"If you don't play it up well enough, students won't come," Havis said.

not been continuous.

SIUE Chancellor David Warner, said in a recent press release that he believes there are a number of factors contributing to SIUE's enrollment success, including its academic reputation as well as the quality of on-campus student life.

number of black students receiving degrees dropping from 13 percent to 11 percent. SIUE's number of black students has dropped as well. Werner said the university is committed to "making this campus open for all," adding, "We must continue our journey down the pathway of harmony."

Werner noted that SIUE loses 30 percent of its freshmen after their first year, much like any university. Werner said that if the current trend continues, SIUE will lose 425 of the freshmen by the end of next semester.

SIUE workers protest before Werner speech

BY DANIELLE BELTON
EDITOR IN CHIEF

SIUE civil service workers held an informational picket in front of the University Center Wednesday just before Chancellor David Werner gave his "State of the University" address.

Workers were protesting their wages, which they claim are the lowest of all civil service workers in Illinois.

Workers showed their solidarity by wearing green clothing and buttons. Approximately 40 workers were at the main entrance to the University Center, passing out

fliers with wage statistics and other information, including a message that could be mailed to SIU President Ted Sanders.

The workers, who are members of the American Federation of State, County and Municipal Employees Local 2887, claim in the flier that "if there is enough money to provide for a 2 percent equity (raise) for faculty, why isn't there money to pay civil service employees a better wage?"

This is the second picket on campus this year. The first, held by SIUE building service workers, took place during Welcome Week. They were also picketing over low wages.

Greek Week coming to end

The 16 sororities and fraternities, totaling nearly 500 student members, of SIUE are taking part in Greek Week.

Greek Week winds down with a greek picnic at 5 p.m. on Thursday and an awards program at 3 p.m. on Friday. Awards will be presented to the winners of

greek week and other events for the year.

Also, from 10 a.m. to 2 p.m. on Thursday, the greeks will have philanthropy booths set up on campus to raise money and collect goods for various charities in the area.

BLACKS

from page 1

One possible reason for the drop in enrollment is a strong job market. Tarpey said that rather than attending college, a growing number of people may be choosing to enter the workforce. However, Tarpey also said that there is no way to gauge this factor.

The report set a goal of increasing black enrollment to a percentage comparable to the black population in the region and in the state. To obtain this goal, SIUE has beefed up its recruitment efforts in areas of Chicago that are dominantly black.

Our sister school, SIUC, has had success with this method. In the last five years, the percentage of black entering freshmen has gone up from 18.4 percent in 1993 to 20 percent in 1997. In addition, the percentage of SIUC's population that is black is

greater than the proportion of blacks in Illinois' population.

Tarpey suggested that this might be because train service runs directly from Chicago to Carbondale, providing easier transportation for students. SIUC has also provided housing opportunities for students away from home, whereas SIUE has historically been primarily a commuter school.

SIUE's evolution away from a commuter campus may provide a jump-start for the recruiting process. More than 2,300 students are currently living in university housing and, for the first time in SIUE's 33-year history, the majority of freshmen are living on campus.

Despite the increase in overall population, a continued focus will be placed on the potential factors for the decrease in black population. Between these efforts and enhanced recruitment, the university is working to regain black enrollment on campus.

WERNER

from page 1

With a desire to increase professional options and expand the choice of courses for SIUE students, Werner said the university plans to work on continuing a partnership with SIU-Carbondale. He said SIUE will eventually add more independent doctoral programs. Werner said that in working with Carbondale, SIUE will be a "full partner - not a stepchild."

"Since its beginning in 1957, SIUE's space has grown

"We can't be complacent with our record," he said.

In noting the growth of faculty, Werner cited a remark by a colleague: "I've been here so long, I don't know anyone anymore." Werner admitted he sometimes feels the same way with so many new instructors on campus.

Currently, 37 percent of the faculty are women and 6.2 percent are African-American. Werner said he hopes to see both those figures change, with women eventually reaching 50 percent and blacks achieving the

same percentages as the black student population. SIUE full-time faculty teaches 80 percent of the courses and despite the enrollment increases, there is only a 14.9 student to faculty ratio.

Among the goals Werner outlined were: plans to add one new undergraduate degree program per year for the next six years, to increase student retention, work on accreditation for the five remaining non-accredited departments and eventually increasing admission standards.

Some days are better than others



Danielle Belton

I really didn't want to get up Wednesday morning.

I woke up as I do every morning, really sleepy. I knew I was going to have a long day. I had papers to rewrite, a presentation to give, a speech to cover for the Alestle, two classes to attend and a newspaper to put together. Plus I was sick all day. But I didn't have much of a choice. All I could think about was how this place annoyed me so.

I didn't want to go to class and chuckled as I recalled how one of my professors had once referred to SIUE as the Wal-Mart of college education. Though I originally wanted to attend school here, some days I would wonder why that was. My father kept getting SIUE confused with Carbondale when I was trying to enroll here. Today was one of those days when I wondered if I should have gone to Carbondale. After all, the newspaper there has a printing press and a building. Such a boring little school we have here, I would think some days. Nothing ever happens.

When I arrived at the University Center to cover the speech, a group of women and a few men were standing in front of the building dressed in green and white. They all had on shiny white buttons and were passing out fliers. Oddly enough, I wasn't given one. Normally, I'm a flier magnet.

My stomach rumbled because I hadn't eaten breakfast as I made my way to the Meridian Hall. I felt weak from my nausea, but I knew this had to be covered because if I didn't do it, it wouldn't get done. And there are just some stories you can't cancel on.

When I got there, the first thing I thought was, "I hope this isn't going to be boring." As a matter of fact, I just knew this was going to be boring. I just kept thinking how I was probably going to have to fight to stay awake. I joked with our photographer that maybe we should play a game of telephone with the picketing civil service workers to spark some excitement. You know the game: You whisper a story to one person and she repeats it to the next and so on until you've got quite a tale at the end. It was suggested we start with something along the lines of, "Did you hear he's really taking the raise?" and see what the quote becomes after it traveled through the line. But we decided that wasn't the day to bring back yellow journalism.

I kept fantasizing that maybe the civil service workers were going to do something outrageous, like jump up and start singing "My Country 'tis of Thee" in the middle of the chancellor's address. I watched a documentary the other night about Muhammad Ali called "Aka Cassius Clay" that showed the protests and sit-ins of the '60s. I daydreamed about all those women in green and white, some the same age as my mother, getting up and chanting, "Hell no, we won't go!"

But this isn't the '60s, and this wasn't a sit-in. I watched as all the workers politely found their seats and waited for the address to begin. People tell me there used to be protests on this campus all the time during the '60s and '70s, but I find that hard to believe. It's a whole other world here now. People barely get upset enough to write a letter to the editor about the university. How did they ever get up enough energy to protest anything?

Snapping out of my daydream, I realized that I had better find a seat. The back had filled up quickly, and it looked like there was going to be quite a crowd. As I maneuvered to the front I noticed that it was practically empty. The people at the address were not much different from the students in the classes. No one wants to sit up front in English 101, hardly anyone sat up front at the speech either.

I sat in the front for two reasons. One, because I wanted to be able to see the chancellor's face clearly, and two, because I didn't want to sit next to anyone else. Part of me also wanted the officials to notice that the Alestle was there to cover the event. I'm pretty big on being seen.

The speech began and I was surprised. It wasn't boring. Chancellor Werner isn't the most fiery of speakers, but he was very direct and informative. I was surprised and fascinated at where this university is headed, and I wondered what was it becoming. I thought how I was attending SIUE while it is still in its stages of transition from commuter school to residential school. Right now it has a sort of half-made bed feeling. It's finished in some ways and in others still looks a mess.

I daydreamed about what this place would be like in 20 years if the administration is able to keep up the pace. Would I be able to come back to this campus and see an entirely different picture? At the rate the school is going and growing, SIUE is on the path of becoming one of the largest and most popular universities in the Midwest. People from St. Louis might regard SIUE in the same way they talk about St. Louis University, or even in the same way they talk about Carbondale.

After the speech was over, I sat and talked with three professors from the Department of Education. All reflected the optimism of the chancellor's speech. One woman, Barbara Havis, was concerned about how SIUE doesn't get credit for its programs because it's often confused with Carbondale. After listening to the speech and hearing what she said, I thought maybe someday it would be the other way around.

Danielle Belton
Editor In Chief

Commentary

Book details impeachment

WASHINGTON (AP) — Only one president, Andrew Johnson, was impeached and forced to stand trial in the Senate. One American who knows much about that 1868 proceeding is Chief Justice William H. Rehnquist, who would preside over a Senate trial for President Clinton.

In his 1992 book "Grand Inquests," Rehnquist detailed the House impeachment and Senate trial of Johnson and those conducted in 1804 for Supreme Court Justice Samuel Chase.

"He probably knows more about impeachment than anyone else," Washington lawyer John Roberts says.

The House Judiciary Committee must decide whether Independent Counsel Kenneth Starr's report suggesting impeachable conduct by Clinton requires impeachment hearings. If such a full inquiry led to articles of impeachment, the full House would have to vote whether to impeach — the political equivalent of an indictment.

Selected House members then would serve as prosecutors, and the 100 senators as a jury. Washington lawyer Theodore Olson cites the "scholarly detail" of Rehnquist's book in calling him "one of the experts."

The book tracks two historic Senate trials that ended in acquittals, not ouster from office. Rehnquist suggests that in each the Senate put aside partisan politics to reach results that best aided the nation and the integrity of the process.

"There were undoubtedly political partisans on both sides of the aisle in each case, but each time enough members of the majority party balked at the demands for party unity to acquit both Chase and Johnson," he wrote.

A two-thirds vote of those senators participating is needed for conviction and ouster by the Senate.

Noting that the Supreme Court's 1998-99 term beginning Oct. 5 could yield the fewest decisions of any term in decades, Roberts says, "If the chief justice finds he has additional obligations this year, he should be able to attend to them."

At the nation's highest court, Rehnquist has the well-earned reputation of running a tight ship. He zealously keeps oral argument proceedings on schedule, sometimes cutting off attorneys in mid-sentence. His eight colleagues suggest in private that he runs the court's closed-door deliberations in much the same manner.

Such instincts might have to be suppressed in a Senate trial, however. In Johnson's trial last century, most of the procedural disputes were resolved by the Senate itself and not presiding Chief Justice Salmon Chase.

The Johnson trial took nearly two months, but those who know Rehnquist well say it might have been much shorter had the current chief justice been on the scene.

A lifelong Republican, Rehnquist was appointed to the Supreme Court in 1972 by President Richard Nixon, and was elevated to the chief justice's job in 1986 by President Ronald Reagan.

In the early 1980s, Rehnquist often told acquaintances he could not picture himself still working at age 70. But his promotion and his wife's death in 1991 changed his retirement time-schedule.

He will be 74 in two weeks, but no one expects Rehnquist to retire before the presidential election in 2000.

Letters to the editor policy:

The editors, staff and publishers of the Alestle believe in the free exchange of ideas, concerns and opinions and will publish as many letters to the editor as possible. All letters should be typed and double-spaced and be no longer than 500 words. Please include your phone number, signature and social security number.

We reserve the right to edit letters for grammar and content. However, great care will be taken to ensure that the message of the letter is not lost or altered.

Letters to the editor will not be printed anonymously except under extreme circumstances.

The Alestle is a member of the Illinois College Press Association.

The name Alestle is an acronym derived from the names of the three campus locations of SIUE: Alton, East St. Louis and Edwardsville.

The Alestle is published on Tuesdays and Thursdays during fall and spring semesters, and on Wednesdays during summer semesters. For more information, call (618) 650-3528.

News EditorvacantPatrick Durst	
News StringersAlicia MiddendorfAubrey Ellinger	
Anthony Watt	Graphics AssistantsMark Wood
Dana Miles	DJ Kolnicki
Lifestyle Editorvacant	James Hoef
Writer at LargeCorey Stulce	Ad RepsEric Albrecht
Lifestyle Reportersvacant	Quinn Morrow
Lifestyle StringersKara Wolf	Student SecretariesKatie Clanton
Jim Dalton	Stacie Evans
Stephen White	Photo EditorBob Fehringer
Sports EditorTodd Spann	Assistant Photo EditorJill Stevens
Sports Reportersvacant	PhotographerMike Pernicka
Chief Copy EditorRhoda T. Harpe	Editor in ChiefDanielle Belton
Copy EditorAndrew Harmon		
Luke C. J. Smith		
Hannah Needham		
Sasha Mastroianni		
Webmastervacant		
CirculationTroy Dinkheller		

The Alestle

Campus Box 1167

Edwardsville, Ill. 62026-1167

<http://www.siu.edu/ALESTLE/Alestle.html>

Who Said It?
What Movie?

"I know we've only known each other for 4 weeks and 3 days, but it feels like 9 weeks and 5 days."
(Hint: early Carl Riener)
Answer next week

Last week's answers: "Rowdy Roddy" Piper in "They Live"

Lifestyle

People, Entertainment & Comics

Box Office Big Ones

1. Rush Hour \$33
2. One True Thing \$6.6
3. ... About Mary \$5.6
4. Rounders \$4.7
5. Simon Birch \$3.7

(All figures in millions)



BY COREY STULCE
WRITER-AT-LARGE
cstulce@siue.edu

I know quite a few college students, and all of them have lots of stress. It's just hard to juggle all of the things that dominate the day, be it studying, a night job, socializing or alcohol. Actually, the latter seems to alleviate my stress as well as add to it.

So I try to avoid things that irk me the wrong way. But for some reason, I keep noticing things that make me say, "What the hell is wrong with the world?"

I completely loathe the hype surrounding the fall television season. Why must the networks make such a huge deal every year about 40 new shows that are going to be canceled before the first commercial break even hits? They try to make us feel as if our lives will be empty if we don't sit on the couch night after night and watch this tired crap.

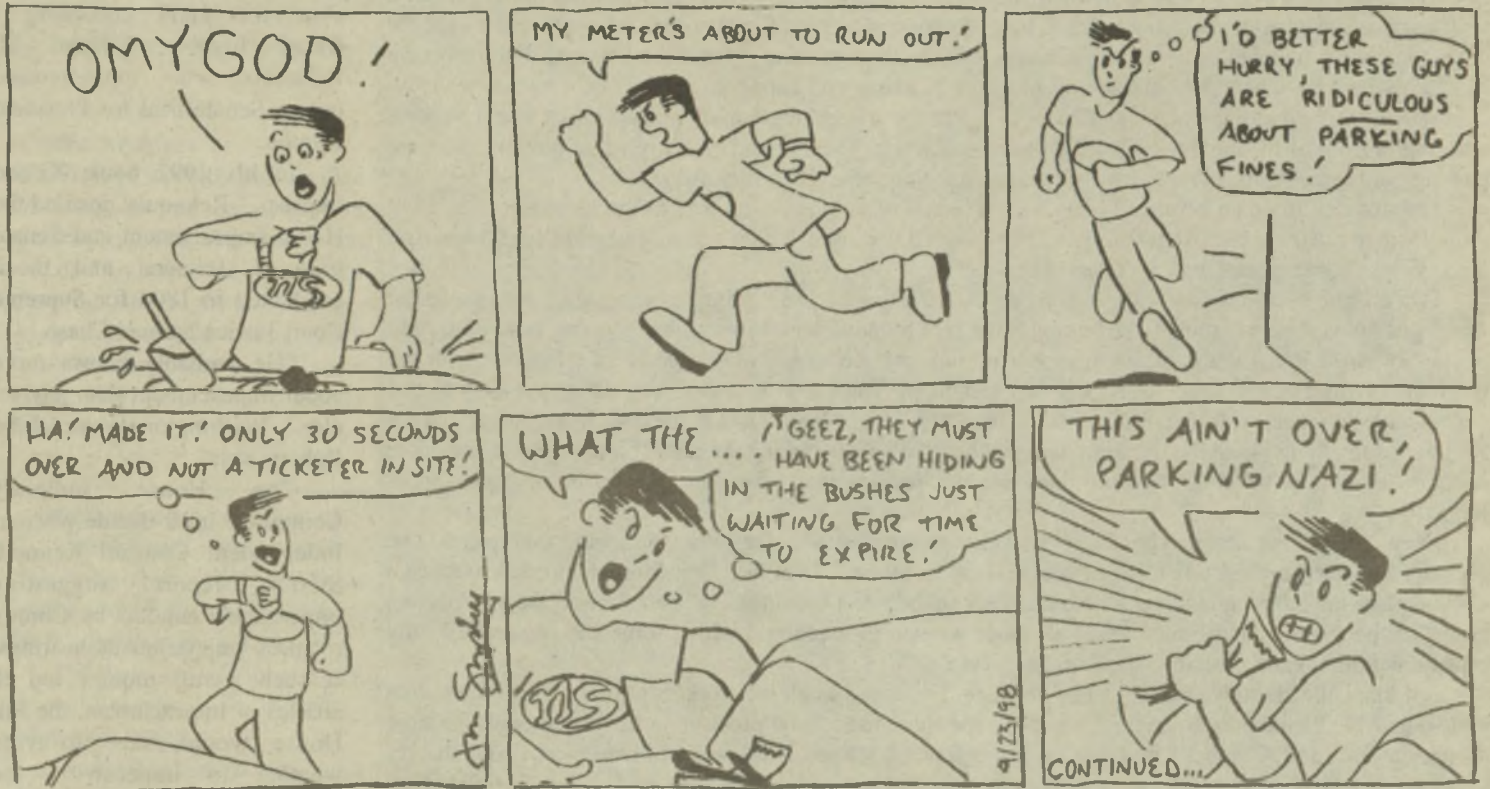
I can hear that bellowing voice, the one that does all the narration of movie previews, saying, "DON'T MISS ONE EPISODE OF 'FRIENDS' THIS SEASON, BECAUSE YOU WON'T BELIEVE WHAT WILL HAPPEN NEXT!" Gee, let me guess: they'll have sex and talk about sex and maybe some of them will get together and complain about sex.

And then there's the commercials. If I see that little rodent Taco Bell chihuahua one more freakin' time ... Why has he not gotten violent diarrhea yet and died? I would give a kidney if I could punt that dog into the ocean. Great, I can hear PETA getting ready to phone me right now.

I can also certainly live without remakes of songs that are not begging to be remade. Do we need a sub-par pop group remaking another sub-par pop group's song? (i.e., "Cruel Summer.") The ditty, which was OK in the '80s, is barely a decade old and now some candy-ass, Euro-trash, ABBA-esque pop foursome like Ace of Bass needs to redo it?

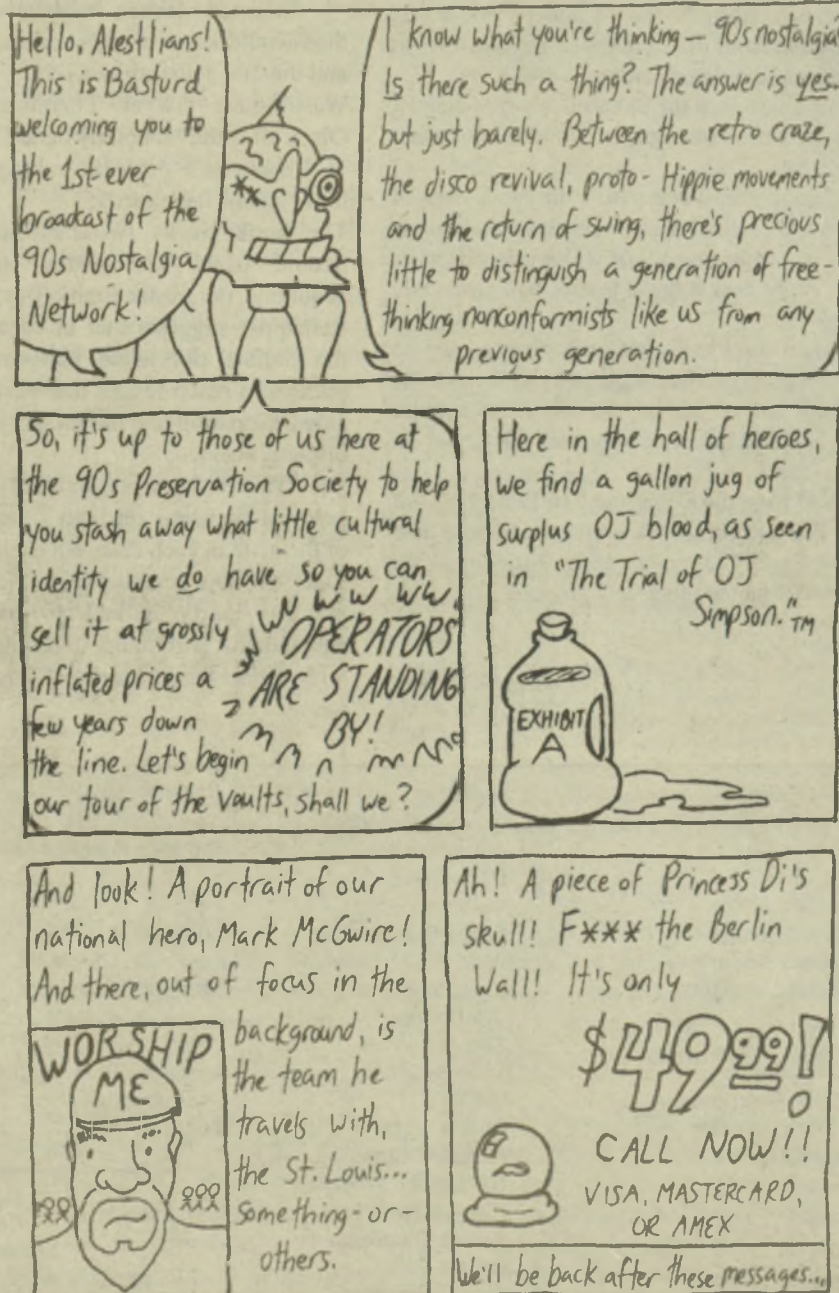
So to alleviate my stress, I will continue to watch reruns of "The Simpsons" and listen to good '80s trash like Adam Ant and Dexy's Midnight Runners.

Lay It On Me



Mannlicher-Carcano

by Mr. Smith



Ask Alli Khat...

Meet the Alestle's new advice columnist, Alli Khat.

Khat is in an excellent position to offer words of wisdom to people with problems because she's been on the SIUE campus for more than six years.

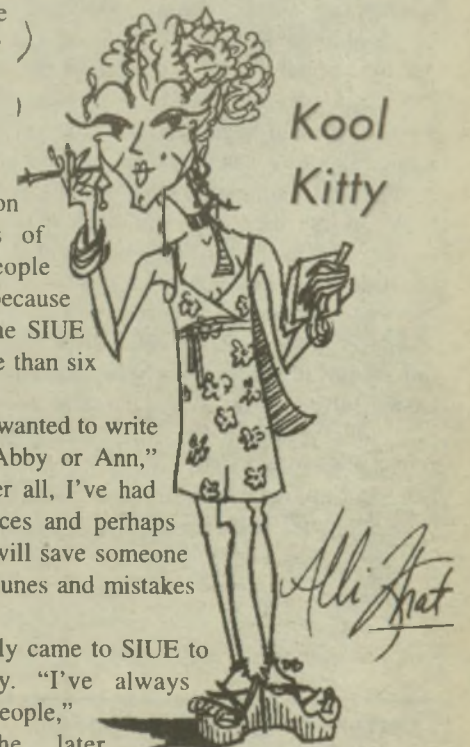
"I've always wanted to write a column like Abby or Ann," Khat said. "After all, I've had lots of experiences and perhaps my knowledge will save someone from the misfortunes and mistakes I've suffered."

Khat originally came to SIUE to study sociology. "I've always wanted to help people," she said. She later switched majors, first to psychology, then nursing, then education, then physical therapy. "It was all so confusing. I want to devote my life to helping others but studying was so hard," she said.

She said enlightenment came during a Jerry Springer episode that featured battling bisexual roommates. "I realized then that so many people need help, and I could do that while reaching out to many, many others."

The super-senior is now a mass comm major and said she hopes to graduate "sometime in the next century." She added, "Hey, don't laugh, buddy. It's closer than you think."

You've met Khat. Now take a look at her first column in the Alestle. You'll find it in next Thursday's Lifestyle section. Send letters for Alli Khat to: The Alestle, Box 1167, Attn: Alli Khat or drop them off at the Alestle's office.

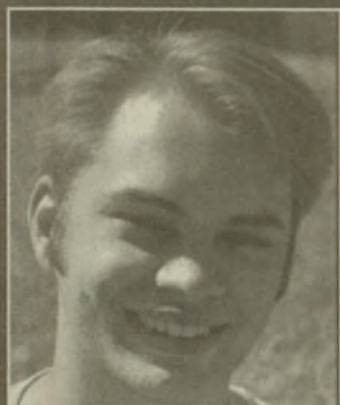


Say What!?!

When was the last time you ignored your conscience?



"I drove through a crosswalk while people were waiting to walk."
-Tim Vogt, Freshman, Undecided



"Every time I light up a cigarette."
-Tony Mikoff, Sophomore, Mass Communications



"Ten minutes ago, when I was supposed to be in class."
-Lisa Allen, Sophomore, Nursing



"Three days ago, my conscience told me to move my car. I didn't, and I got my tires slashed."
-Ronald Ferrell, Senior, Elementary Education



"The other day when I should have went to the art building to work on my printmaking project. Instead I went to a club."
-Stacy McEldowrey, Sophomore, Art

"THE BEST HAUNTED ATTRACTIONS IN ST. LOUIS"



141 & 44 AT VALLEY PARK

One of the best Haunted attractions in America, according to Fangoria Magazine. Featuring 35 new interactive scenes, special effects, animations, Spooky Golf, Horror Museum, outdoor carnival rides, Scare-Oke, Horror Theatre, Live Stage Shows, and entertainment from the World's only all skeleton band... "The Rolling Bones."

SILO-X IS A TOP SECRET MISSILE BASE WHERE SOMETHING HAS GONE WRONG. NOW YOU CAN EXPERIENCE THE VERTIGO VENTILATOR SHAFT, 750,000 VOLT REACTOR ATTACKER, MUTANT ZOMBIES AND SHOCKING EXPERIMENTS. FINALLY YOU WILL LEARN IF THE GOVERNMENT HAS BEEN COVERING UP THE EXISTENCE OF EXTRATERRESTRIAL LIFE IN OVER THREE QUARTERS OF A MILE OF RADIATED RUINS. THE TRUTH IS OUT THERE!

THE ALL NEW



LOCATED IN HISTORIC SOULARD



19TH & WASHINGTON DOWNTOWN

Experience The World's Biggest All 3-D Haunted Attraction. For the First time new technology called "chromodepth" allows for the most unique haunted experience of your life. Come face to face with Madam Olga's traveling circus, crazed clowns, giant circus animals, Gorgo the Gorilla and a Freak Show like no other. Experience your own Visions of Terror in 3-D.

Call the 24 hour Haunted Hotline (314)631-8000
www.halloweenproductions.com

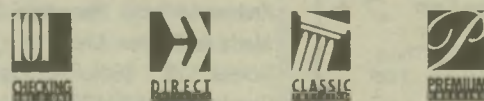


checking choices

SIUE Cougar Checks & A FREE Cougar Checkbook Cover When You Choose Checking 101

No Minimum Balance!
No Monthly Fee June, July & August!
FREE MagicCheck ATM/Debit Card...and more!

You'll also receive access to our...
• FREE 24 hour Magic Phone Banking.
• 25 NO-FEE Magic Touch ATM's... including 2 on campus!



CHOOSE THE ONE THAT'S RIGHT FOR YOU!

internet banking

FREE 24 Hour Magic Online...
From Any Computer With An Internet Connection

- View account information.
- Obtain specific check information.
- View a list of all account transactions.
- Transfer funds between accounts.

...and more

All you need to sign up for Magic Online is a Checking Choices account at TheBANK.



Free Mouse Pad
When You Sign-up.

TheBANK
of Edwardsville
The People You Know & Trust

Main Office • 656-0057
Montclair Center • 656-0057
In-Store Center • Edwardsville Shop 'n Save
Alton Center/Ridge • 463-7020
Alton Center/North Port • 467-6700

Bethalto Center • 377-2884
Collinsville Center • 344-6100
Highland Center • 654-5414
Troy Center • 667-6702

Member FDIC



Visit our Magic Online Demo at www.4thebank.com



FOR SALE
\$79,000

Open House! Sept. 27, Oct. 4 and 18th, 1-4pm. 1250 Sq. Ft., 739 Maple, Collinsville, IL. Corner Lot. 2 Bedroom, Dining Rm., Full Bathroom, Living Rm., Kitchen, Glassed in porch. Full Basement workshop, 1 car garage, auto opener. LOW TAXES! Washer & Dryer, Refrig., Stove, Hardwood Flrs., Marble Fireplace, Newly Remodeled, Contemporary. By appointment only 345-9197



Computer Solutions
of
Southern Illinois, Inc.
(618) 288-6534

Free System
Delivery
within the
Metro-East
Area!

P11 266 Complete System...\$1,299.99
P11 300 Complete System
w/ DVD ROM & 17" Mon....\$1599.99

CALL FOR OTHER
CONFIGURATIONS, PARTS
AND ACCESSORIES!!

233MMX SYSTEM!!! \$949.99
32MB RAM • 3.2GB Hard Drive • 4MB Video Card • 24X CD-ROM
16-bit Sound w/Speakers • 56K FAX Modem w/Voice • 15" Monitor
Surge Protector • Keyboard • Mouse • Windows98 • Software Bundle

CHESLEY FENCE & DECK 692-9009

VISIT US AT OUR WEB SITE
WWW.CHESELEYFENCE.COM

Bank Financing - No Down Payment to Qualified Buyers
Family owned business serving Metro-East for 28 Years

KERASOTES THEATRES

visit our website at www.kerasotes.com SHOWTIMES START FRIDAY!

COTTONWOOD CINEMA 656-6390
Upper Level of Cottonwood Mall
Next to Walmart • Edwardsville

\$2.00 All Seats / All Shows

The Parent Trap (PG)
Fri/Sat 6:45, 9:30; Sun-Thurs 6:45;
Sat/Sun Matinee 2:00
The Negotiator (R)
Fri/Sat 7:00, 9:50; Sun-Thurs 7:00;
Sat/Sun Matinee 2:15
Snake Eyes (R)
Fri/Sat 7:15, 9:40; Sun-Thurs 7:15;
Sat/Sun Matinee 2:30

SHOWPLACE 12 659-SHOW
Edwardsville
Just W. of Rt. 159 on Center Grove Rd.

ALL STADIUM SEATING • ALL DIGITAL SOUND

\$3.50 • All Shows Before 6 pm
• Students • Seniors

Ronin (R)
Daily 4:10, 7:10, 9:45
Sat/Sun Matinee 1:20
Urban Legend (R)
Daily 4:45, 7:30, 9:55;
Sat/Sun Matinee 2:15
Simon Birch (PG)
Daily 4:00, 6:50, 9:20;
Sat/Sun Matinee 1:30
Rush Hour (PG-13)
Daily 5:15, 7:45, 10:10;
Sat/Sun Matinee 2:20
Dead Man Campus (R)
Daily 5:10, 7:40, 9:50;
Sat/Sun Matinee 1:50
Blade (R)
Daily 4:20, 7:00, 9:40;
Sat/Sun Matinee 1:30
One True Thing (R)
Daily 4:15, 7:15, 10:00;
Sat/Sun Matinee 1:15
Ever After (PG-13)
Daily 4:00, 6:40, 9:10;
Sat/Sun Matinee 1:10
Rounders (R)
Daily 4:30, 7:20, 10:00;
Sat/Sun Matinee 1:50
Saving Private Ryan (R)
Daily 4:40, 8:15
Sat/Sun Matinee 1:00
There's Something About Mary (R)
Daily 4:50, 7:20, 10:05;
Sat/Sun Matinee 2:10
Armageddon (PG-13)
Daily 5:00, 8:00;
Sat/Sun Matinee 1:40

CINE 254-6746
400 Central Ave., Roxana

\$2.00 All Seats / All Shows

AirBud: Golden Receiver (G)
Fri/Sat 6:45, 9:00; Sun-Thurs 6:45
Sat/Sun Matinee 2:00

NAMEOKI CINEMA 877-6630
Nameoki Village, Granite City

\$2.00 All Seats / All Shows

Ever After (PG-13)
Fri/Sat 6:45, 9:15; Sun-Thurs 6:45
Sat/Sun Matinee 2:00
Blade (R)
Fri/Sat 7:15, 9:45; Sun-Thurs 7:15;
Sat/Sun Matinee 2:15

QUAD CINEMA 4 233-1220
5700 N. Belt West, Belleville

\$3.50 All Shows Before 6 pm

Urban Legend (R)
Daily 4:20, 7:20, 9:50;
Sat/Sun Matinee 1:15
Ronin (R)
Daily 4:00, 7:00, 9:40;
Sat/Sun Matinee 1:00
Rush Hour (PG-13)
Daily 4:10, 7:10, 9:30;
Sat/Sun Matinee 1:45
There's Something About Mary (R)
Daily 4:30, 7:30, 10:00;
Sat/Sun Matinee 1:30

EASTGATE 6 254-5289
Eastgate Center, East Alton

\$4.00 All Shows Before 6 pm

Rush Hour (PG-13)
Fri/Sat 4:20, 6:45, 9:10 Sun-Thurs
4:20, 6:45 Sat/Sun Matinee 2:00
Ronin (R)
Fri/Sat 4:50, 7:30, 10:00 Sun-Thurs
4:50, 7:30; Sat/Sun Matinee 1:20
Urban Legend (R)
Fri/Sat 4:40, 7:10, 9:30 Sun-Thurs
4:40, 7:10 Sat/Sun Matinee 1:45
Dead Man On Campus (R)
Fri/Sat 4:45, 7:20, 9:40 Sun-Thurs
4:45, 7:20 Sat/Sun Matinee 2:30
There's Something About Mary (R)
Fri/Sat 4:10, 7:15, 9:50 Sun-Thurs
4:10, 7:15 Sat/Sun Matinee 1:30
One True Thing (R)
Fri/Sat 4:00, 7:00, 9:40 Sun-Thurs
4:00, 7:00 Sat/Sun Matinee 1:10

FREE REFILL on All Sizes of Popcorn and Soft Drinks!

Campus

SUNDAY MONDAY TUESDAY WEDNESDAY

September

Sunday, September 27 Greek Week

4th Annual Family Weekend
University Housing and other locations

Greek Awards Program
6:00p.m.
Morris University Center
University Restaurant

Catholic Mass/Social
10:30a.m.
Religious Center

Bicycle the SIUE Trails
10:30a.m. - 2:00p.m.
SIUE Campus

St. Louis Rams vs. Arizona Cardinals
12:00 Noon
Trans World Dome
St. Louis, Missouri

Body Sculpting Aerobics
12:30p.m.
Student Fitness Center, Aerobics Room

Men's Soccer - SIUE vs. Indianapolis
12:30p.m.
Korte Stadium

St. Louis Cardinals vs. Montreal Expos
1:10p.m.
Busch Stadium
St. Louis, Missouri

Women's Soccer - SIUE vs. Indianapolis
3:00p.m.
Korte Stadium, Athletics

Praise and Worship Service
5:30p.m.
Religious Center, Peck Christian

Fellowship Catholic Mass/Social
8:00p.m.
Religious Center

Monday, September 28

David Sill: Sabbatical Photos
through Oct. 30
Art & Design Building
New Wagner Gallery

Bi-State Softball Registration Due (\$50)
at the Reception Desk of the
Student Fitness Center

Racquetball Tournament
Vadalabene Center
Racquetball Courts

Just Work It: Circuit Aerobics
12:00p.m. - 12:30p.m.
Vadalabene Center
Dance Studio

Power Step
Intermediate/Advanced Aerobics
4:45p.m.
Student Fitness Center
Dance Studio

Sexual Abuse/Sexual Assault Survivors
Support Group
6:00p.m. - 8:00p.m.
Counseling Services

Aerobics - Level 1-2
6:00p.m.
Student Fitness Center
Aerobics Room

For more information call
the Information Office at
692-5555

Tuesday, September 29

Whiffleball Registration
Student Fitness Center

IMAGE - Professional Attire
11:00a.m. - 12:15p.m.
Founders Hall, Room 2407

Just Work It: Circuit Aerobics
12:00p.m. - 12:30p.m.
Vadalabene Center
Dance Studio

Student Leadership Development Program
Modules
2:00p.m. & 6:30p.m.
Morris University Center

Student Survival Skills Group
2:30p.m. - 3:30p.m.
Peck Hall, Room 2415

Stretch Class
4:00p.m. - 4:30p.m.
Student Fitness Center
Aerobics Room

Aerobic Kick/Boot Camp
4:45p.m.
Student Fitness Center
Aerobics Room

Aerobics Level 1-3
6:00p.m.
Student Fitness Center
Aerobics Room

Bible Study
7:00p.m.
Religious Center
Peck Christian Fellowship

Wednesday, September 30

Yom Kippur
Floor Hockey Registration
the Reception Desk
Student Fitness

University Center Board
Gateway Choir
11:30a.m. - 1:00p.m.
Morris University Center
Goshen Lounge

Just Work It: Circuit Aerobics
12:00p.m. - 12:30p.m.
Vadalabene Center
Dance Studio

Dialogue with Senior Citizens
1:00p.m. - 3:00p.m.
Morris University Center,
Mississippi/Illinois Room

Aerobic Disco Fever
4:45p.m.
Student Fitness Center
Aerobics Room

Aerobics - Level 1-3
6:00p.m.
Student Fitness Center
Aerobics Room

Floor Hockey Registration
Student Fitness Center

Look
Upcom
Even

THE SCENE

Happenings Around SIUE

COMEDY

Art Vieluf's Comedy Etc.

Art Vieluf's Comedy Etc. presents shows at 8:30 p.m. Wednesdays through Fridays and 8:30 & 10:30 p.m. Saturdays. Tonight **Butch Lord** and **Steve Caminiti** are featured. **Tommy Chong** and **Butch Lord** perform Friday and Saturday. Wednesday through Oct. 3 **John Rathbone** and **Tim Rowland** star. Tickets \$8 - \$10. Art Vieluf's Comedy Etc. is in the Ramada Inn, I-64 & Hwy. 159 in Fairview Heights. 628-4242

ComedySportz

ComedySportz, an improv comedy troupe, features local actors and actresses performing improvised scenes based on audience suggestions. Showtimes are 7:30 p.m. Thurs. and 7:30 & 9:30 p.m. Fri-Sat. at the theater, on the second floor of **St. Louis Union Station** off the main lobby of the Hyatt Hotel. Tickets \$7. 314-241-2275.

OPEN MIC

Afrocentric Books & Cafe

Afrocentric Books & Cafe, 8081 Olive, holds a poetry open mic hosted by **Dunkor**

CONCERTS

St. Louis Symphony Orchestra

The **St. Louis Symphony Orchestra** performs regularly at **Powell Symphony Hall**. Tickets \$15 - \$66, except as noted. At 8 p.m. Friday and Saturday, **Vonk** Conducts Mozart. Also at Powell, violinist **Gidon Kremer** performs **Piazzolla's** tango opera, **Maria de Buenos Aires** at 8 p.m. Oct. 15. Tickets \$15 - \$64. Powell is at 718 N. Grande. 314-286-4136.

Riverport Amphitheater

Aerosmith performs at 8 p.m. Friday. Tickets \$25 - \$35. **Kixfest '98**, featuring **Joe Diffie**, **Jo Dee Messina**, **Lone Star** and the **Dixie Chicks**, begins at 6 p.m. Saturday. Tickets \$13.50 - \$19.50. **Riverport Amphitheater** is at Earth City & I-70. 314-989-8000.

The Sheldon

Tony Bennett performs at 8 p.m. tonight at the opening of **The Sheldon's** new art gallery. Tickets \$50 - \$75. The **L.A. Guitar Quintet** performs at 8 p.m. Saturday. Tickets \$25 - \$30. The Sheldon is at 3648 Washington. 314-534-1111.

Mississippi Nights

They Might Be Giants performs at 9 p.m. Friday. Tickets \$13. **Trip El Ecks**, **Eli Stone** and **Disturbing the Peace** perform Saturday. **Mississippi Nights** is at 914th N. 1st. 314-421-3853.

Jazz at the Bistro

Jazz at the Bistro kicks off an 18-week series of jazz concerts with the **Eliane Elias Trio**. Sets are at 9 & 10:45 p.m. through Saturday. Tickets \$5 and up. The **Backstage Bistro** is at 3536 Washington. 314-534-1111

Connection

WEDNESDAY THURSDAY FRIDAY SATURDAY

September 1998

September 30
ppur

ation Due (\$20) at
Desk of the

ss Center
d Center Stage -

erobics

Citizens

er,
im

tion

For
oming
ents

Thursday, September 24 Greek Week

Racquetball Tournament
Vadalabene Center
Racquetball Courts

Indoor Tennis
Student Fitness Center, Court 4

Soup and Substance
12:00p.m. - 1:00p.m.
Morris University Center
Cahokia Room

Just Work It: Circuit Aerobics
12:00p.m. - 12:30p.m.
Vadalabene Center, Dance Studio

Chancellor's Colloquium
4:00p.m. - 5:30p.m.
Morris University Center
Maple/Dogwood Room

Stretch Class
4:00p.m. - 4:30p.m.
Student Fitness Center, Aerobics Room

Aerobics/Aerobic Funk
Level 2-3
4:45p.m.
Student Fitness Center, Aerobics Room

Aerobics - Level 1-3
6:00p.m.
Student Fitness Center, Aerobics Room

Spades Tournament
6:30p.m.TBA

James Sewell Ballet Company
7:30p.m.
Katherine Dunham Hall
\$6.00 Students
\$12.00 General Admission

Mozart! Mozart! Mozart!
8:00p.m.
Powell Symphony Hall
St. Louis, Missouri

Friday, September 25 Greek Week

4th Annual Family Weekend
University Housing and other locations

Racquetball Tournament
Vadalabene Center, Racquetball Courts

Public Telescope Viewing, Begins at dusk
12:00p.m. - 12:30p.m.
St. Louis, Missouri

Indoor Tennis
Student Fitness Center, Court 4

Just Work It: Circuit Aerobics
12:00p.m. - 12:30p.m.
Vadalabene Center, Dance Studio

Student Senate Meeting
2:30p.m. - 4:30p.m.
Morris University Center
International Room

Aerobics - Level 2
4:45p.m.
Student Fitness Center, Aerobics Room

Peck Christian Fellowship Retreat
5:00p.m. - Noon September 27
Lake Benton Baptist Camp

Volleyball - SIUE vs. Northern Kentucky
7:30p.m.
Vadalabene Center
Gymnasium

Arts League Player's Theater
Performance: "Arcadia" by Tom Stoppard
8:00p.m.
Metcalf Theater
\$4.00 Students & Seniors
\$6.00 General Admission

Mozart! Mozart! Mozart!
8:00p.m.
Powell Symphony Hall
St. Louis, Missouri

Sigma Gamma Rho Dance
10:00p.m. - 2:30a.m.
Morris University Center, Meridian Hall

Saturday, September 26 Greek Week

4th Annual Family Weekend

Visiting Artist George Beasley, Art and
Design Building

Habitat for Humanity
7:45a.m. - 1:00p.m.
Alton, Illinois

Prairie Share
9:00a.m. - 12:00p.m.
Granite City, Illinois

Men's Soccer - SIUE vs. Saint Joseph's
12:30p.m.
Korte Stadium

Aerobic Interval & Circuit Stations,
12:30p.m.
Student Fitness Center, Aerobics Room

Ebony & Ivory Extravaganza
8:00p.m.
Morris University Center
Meridian Hall
\$5.00 General Admission

Volleyball - SIUE vs. Bellarmine
2:00p.m.
Vadalabene Center, Gymnasium

Women's Soccer
SIUE vs. Saint Joseph's
3:00p.m.
Korte Stadium

Arts League Player's Theater
Performance: "Arcadia" by Tom Stoppard.
8:00p.m.
Metcalf Theater
\$4.00 Students & Seniors
\$6.00 General Admission

Natural Nails

(618) 656-6592



For Your Finest & Professional
Nail Care, Nail Art & Air Brush

Free Air Brush. \$2 Off Full Set. \$1 Refill.
Full Set \$22 & Up. Fill \$15 & Up

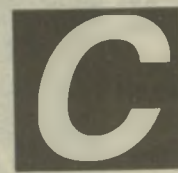
439 S. Buchanan (Hwy.159) Open 7 days a week
Edwardsville, IL 62025 Mon./Sat. 10:00a.m. - 8:00p.m.
(next to Market Basket) Sunday noon - 5:30 p.m.

Affordable Auto Insurance



- SR-22
- Monthly installments
- Local Agent

Motorcycle and renter's
insurance available, too.



See Kelley Middleton or
Cole Hunter Today!
Cassens Insurance Agency
400 St. Louis Street • Edwardsville
656-6074

2858 HWY 159 Edwardsville 659-0506
THE GALLERY
659-0506
"what this college town wants!"

EVERY TUES \$1.00 NIGHT...\$1 BOTTLES...\$1 BRATS...\$1.00 SHOTS

EVERY WED **25 BOTTLES**

EVERY THUR PENNY DRAFTS

EVERY SUN **KARAOKE!!!**

HOURS
SUN - THUR
OPEN TILL 1
FRI - SAT
OPEN TILL 2

MODULES

9/29/98
2:00 p.m.
"14" Major Influences in the Political Process
IL Senator Evelyn M. Bowles,
IL Senator Vince Demuzio
and Bob Enbretson
Mississippi/Illinois, MUC
6:30 p.m.

"04" Effective Communication
SIUE Campus Ministries
Religious Center

10/6/98
2:00 p.m.
"05" Group Process
Major Dan McLean
SIUE Military Sciences
Fitness Center, VC
6:30 p.m.

Community Change:
"15" What a Leader Needs to Know
Charles Parr, President
Family & Community Services
Mississippi/Illinois, MUC

**** SLDP Reminders ****
Volunteer Projects
September 26, October 3 & 10 - Habitat for Humanity, Alton, IL
September 26 & October 24 - Prairie Share Food Co-op, Granite City, IL
October 17 - Action! Day, Holy Rosary School, Fairmont City, IL
October 24 - Action! Day, Beverly Farm, Godfrey, IL
October 14 - Oktoberfest Volunteer & Career Fair

For more information contact the Kimmel Leadership Center at extension 2686

Imani at 9 p.m. the second and fourth Friday
of the month. 314-991-0097.

Divinity

Divinity, 5801 Janet, holds a music, dance,
and poetry open mic hosted by David Nelson
of the Last Poets at 8 p.m. each Wednesday.
Tickets \$3 - \$5. 314-381-9101.

THEATER

The Fox Theater

The Phantom of the Opera is performed at 8
p.m. Friday, 2 & 8 p.m. Saturday, and 2 &
7:30 p.m. Sunday. Last week! Tickets \$17-
\$67. The Fox Theater is at 527 N. Grand.
314-534-1111.

Black Box Theatre

Magic Monkey Smoking Theatre presents a
double bill of re-creations of 1960s TV shows
in Speed Racer/The Twilight Zone: Live! at
8 & 10:30 p.m. Friday and Saturday and Oct.
2 - 3. The Black Box Theatre is at
Crossroads School, 500 DeBaliviere. Tickets
\$7. 361-5664.

The Loretto-Hilton Theatre

The Repertory Theater of St. Louis presents
Arthur Miller's Death of a Salesman through

Oct. 9. Tickets \$9 - \$44. The Loretto-
Hilton Theatre is at 130 Edgar. 314-968-
4925.

James F. Metcalf Theater

Edwardsville's Art League Players will
perform Tom Stoppard's Arcadia at 8 p.m.
Friday and Saturday. Tickets \$4 - \$6. The
James F. Metcalf Theater is on the SIUE
campus near the Vadalabene Center.

ARTS & ISSUES

The James Sewell Ballet Co.

The James Sewell Ballet Company will
perform at 7:30 p.m. tonight in the
Dunham Hall Theater. Tickets \$6 - \$12

St. Petersburg String Quartet

The St. Petersburg String Quartet will
perform at 7:30 p.m. Wednesday, Oct. 21
in Dunham Hall Theater. Tickets \$6 - \$12.

SPECIAL EVENTS

Come Out Screaming

Come Out Screaming, a "gay night out"
hosted by Pride St. Louis, the Privacy
Rights Education Project and the St. Louis
International Lesbian and Gay Film

Festival, is held from 7 p.m. - 1 a.m.
tonight at The Darkness Haunted House,
1535 S. 8th. Tickets \$13. 772-8888.

SIUE Family Weekend

The University offers its annual Family
Weekend Friday and Saturday with events
scheduled for family members of SIUE
students. Most events are free; family
member guest passes are available for the
Student Fitness Center. For a complete
listing of events, contact the Kimmel
Leadership Center at 650-2686.

Mississippi Mud Pottery

"Areas Affected by Shapes," an art exhibit
featuring prints, photographs, computer
graphics, handmade paper, artist books
and mixed media by Carolyn Hasenfratz,
opens at 6 p.m. Oct. 16, in the Mudd
Gallery. Mississippi Mud Pottery is at 310
E. Broadway in Alton. 462-7573

Southern IL Arts & Crafts Festival

Mid America Crafters, Inc. will host the
4th annual Southern Illinois Arts and
Crafts Fall Festival. Featuring pottery,
ceramics, wood carvings, jewelry clothing
and more, the festival begins at 11 a.m.
Oct. 24 - 25 in the SIU Arena in
Carbondale, Ill.

Bill Buckner was the first player in baseball history to wear high-topped cleats.



News from the foul line

by Todd Spann

Hello

Lawrence Phillips could be in a Rams uniform again if St. Louis believes they need to fill in a gap left by Greg Hill, who broke his leg last Sunday.

Yeah ... this makes perfect sense.

Especially when you have a running back who led the team in preseason rushing, is already signed and who just stands on the sideline wondering what else he has to do to catch the eye of Coach Vermeil.

But let's pass on Robert Holcombe, who has a spotless record, and bring in a player who constantly drew more boo's than Albert Belle returning to left field in Cleveland.

Of course, it's just my sarcasm, and they will probably surprise us all by signing Bam Morris.

Hull

Speaking of boo's, Brett Hull was back in town with his new team, the Dallas Stars.

Like the good fans we are, we showed him the appropriate way of welcoming back a player who gave us 10 great seasons — we booed him. That makes sense.

We will miss you

Track and field lost one of its best Monday.

Florence Griffith Joyner died of an apparent heart seizure, police and fire officials said.

She always showed a strong heart in everything she did. And we will miss her.

Homestand

The Cougars start another homestand this weekend. Whether it is soccer or volleyball, go and check it out. The weather should be good, and the price is cheap. In fact it is free!

Men's Soccer

Cougars look to awaken offense this weekend

Two-game homestand will hopefully boost Cougar confidence

BY BRETT LICATA
SPORTS WRITER

The inability to put the ball in the net has the SIUE men's soccer team carrying a dismal 1-5 record into this weekend's homestand.

The Cougars will try to get on the winning track after dropping their last four when they take the field Saturday against St. Joseph's College.

After an upset win over Quincy last weekend, St. Joseph's will bring a wealth of confidence into Saturday's matchup.

The University of Indianapolis will pay a visit to Bob Guelker Field on Sunday afternoon.

"Indianapolis is a very competitive team," head coach Ed Huneke said. "They have a number of good English players that will be a handful."

The Cougars fell to 0-2 as they began their conference schedule last weekend on the road.

A penalty kick goal put the University of Wisconsin-Parkside up 1-0 in the 25th minute on Saturday.

Freshman Justin Huneke answered for SIUE in the 64th minute. Matt Little served up a corner kick to the foot of Huneke who beat the goalkeeper to tie the game 1-1.

The Cougars held the edge in the second half, but a mistake on defense caused Wisconsin-Parkside to score the game-winning goal when the ball trickled over the goal line.

Before the game, junior Justin Berniax injured his ankle and didn't play, but he should be available for this weekend's contests. Cress Maddox broke his shoulder during the game and could be out the remainder of the season.



Jill Stevens/
Alestle
Men's soccer looks to get back on the winning track this weekend against St. Joseph's and Indianapolis.



Alestle file photo

see SOCCER, page 10

Does anybody know the score? — by Andy Korbesmeyer

The baseball season is coming to an end for the St. Louis Cardinals. The season will obviously be marked by the accomplishments of strongman Mark McGwire. It occurred to me Tuesday evening that other than McGwire, fans probably don't know much about the Cardinals season.

Most people who are not hard-core baseball fans can tell you how many homers McGwire has and probably how many Sammy Sosa has. This race has captivated our attention, and I try not to miss an at-bat. Yet aside from watching McGwire hit, how many people watch the game? When McGwire is up, conversations come to a halt, homework

stops, people from all over converge on the television or radio nearby. After McGwire does his business, it is like the scene in "Jerry Maguire" when he is fired, and everyone is at silent attention. As soon as he leaves the building, the hustle and bustle of everyday life continues.

Personally, on Tuesday I was flipping back and forth between the game and the season premier of "Mad About You." Hey, what would you rather watch, Eli Marrero go 0 for 3 or Helen Hunt wrapped in a towel? On Wednesday night, Randy Johnson was on the mound for the Astros. I don't think that Johnson facing Luis Ordaz would be able to compete with finding out what happens between

Brandon and Kelly on "Beverly Hills 90210." Once again I will be flipping channels. Thursday is no contest: the season premier of "Friends" vs. the Montreal Expos. The remote control will be getting a workout this week. One Cardinal game that probably will keep my attention will be Sunday's season finale. Sure it's the last game, McGwire will put his signature on history with his last at-bat. But most importantly, the only other thing on television will be the Rams.

Where to be this weekend:

The women's volleyball team keeps rolling along with a record of 11-2. They play at home on Friday. For people who

see ANDY, page 10

Donohue	300	18	60	8
Irros	292	28	72	8
Infield	279	20	68	8
Ballard	278	41	140	21
Ordoqui	277	29	101	11
Blair	273	42	111	11

The Numbers

INNINGS PITCHED	
Maddux, Atl	7
Stottlemyre, StL	7
Chitina, Phi	7

Soccer

GLVC Men's Standings

	GLVC			Overall		
	W	L	T	W	L	T
Wis.-Parkside	2	0	0	4	2	0
UMSL	2	0	0	3	2	0
Lewis	2	0	0	2	3	1
IUPU-Ft. Wayne	1	0	0	4	2	0
Northern Kentucky	1	0	0	1	2	0
Quincy	1	1	0	4	2	0
Saint Joseph's	1	1	0	3	1	1
Kentucky Wesleyan	1	1	0	2	2	0
Indianapolis	0	2	0	3	3	0
Bellarmine	0	2	0	2	5	0
SIUE	0	2	0	1	5	0
Southern Indiana	0	2	0	1	6	0

Goal leaders		Assists leaders	
Mark Kucharczyk, Bell.	10	Rich Elliot, UW-Parkside	4
Panicos Orthodoxou, KW	6	Chris Doran, Lewis	3
Brett Fetz, IPFW	5	Tito Iglesias, Bell.	3
Ben Fry, Indianapolis	5	Dan Perez, IPFW	3
Matt Hein, IPFW	5	Greg Peters, St. Joseph	3

GLVC Women's Standings

	GLVC			Overall		
	W	L	T	W	L	T
Northern Kentucky	1	0	0	5	0	0
Saint Joseph's	2	0	0	7	0	0
Southern Indiana	2	0	0	7	0	1
SIUE	2	0	0	3	1	0
Bellarmine	1	0	0	3	2	0
Indianapolis	1	1	0	4	2	0
Quincy	1	1	0	2	4	0
Lewis	0	2	0	2	4	1
Wis.-Parkside	0	2	0	1	6	0
UMSL	0	2	0	0	5	0
Kentucky Wesleyan	0	2	0	0	3	0

Goal leaders		Assists	
Janece Friederich, SIUE	8	Megan Russell, S. Indiana	8
Mary Reid, St. Joseph	7	Besty Moore, N. Ken.	6
Megan Russell, S. Indiana	7	Jessica Pigman, S. Indiana	6
Lily Alcala, Lewis	6	Mary Reid, St. Joseph	5
Jeanna Martin, N. Ken	5	Tricia Ruark, N. Ken.	4

Volleyball

GLVC Standings

	GLVC		Overall	
	W	L	W	L
Blue Division				
Lewis	4	1	9	3
SIUE	2	1	11	2
Wis.-Parkside	3	2	7	7
IUPU-Ft. Wayne	1	1	10	5
Saint Josephs	1	2	3	8
Indianapolis	0	4	4	10

	GLVC		Overall	
	W	L	W	L
Green Division				
Quincy	4	0	9	4
Northern Kentucky	3	1	11	1
UMSL	3	1	9	2
Bellarmine	2	3	8	4
Southern Indiana	2	4	7	7
Kentucky Wesleyan	0	5	0	9

Kills

Name	Yr.	G	No.	P/G
1. Lindsay Rust (SIUE)	So.	40	176	4.40
2. Jill Bornhorn (BC)	Sr.	42	183	4.36
3. Michelle Gilman (SIUE)	Sr.	50	216	4.32
4. Laura Douglas (IPFW)	So.	59	251	4.25
5. Kim Pingsterhaus (QU)	Sr.	51	209	4.10

Golf

St. Joseph's College Invitational
 Sept. 20-Sept. 21
 Par: 72
 Yardage: 5801
 Rensselaer, Ind.

Final Team Results

1. Indianapolis	679
2. S. Indiana	698
3. St. Joseph's Bellarmine	713
5. De Pauw U.	753
6. Hanover Coll.	771
7. SIUE	775
8. Butler U.	843

Top Individual Scores

1. Laura Compton, SI	+18
2. Marcy Janjecic, St.J Tera Deckard, Indy	+23*
4. Lindsey McGrath, SI	+24
5. Kim Million, Indy	+25
6. Amanda Vincent, Bell	+26
7. Kristi Flisk, St.J	+27
8. Dana Inabnitt, Indy	+28
9. Jill Young, SI	+29
10. Leslie Fryman, Han.	+33
Kato Gardner, Bell	+33
Greta Hickman, DP	+33
Erin McGraw, Indy	+33
Jessica Sikora, Indy	+33
15. Chrissy Steffan, St.J	+38
16. Sara Herstad, Han	+39
Kourtney Krazeise, Bell	+39
Jennifer Bruce, Bell	+39
19. Christine Fox, Butler	+41
20. Melissa Lewis, SIUE	+42
21. Wendy Rhodes, Indy	+43
22. Nancy Nicely, DP	+44

* Won Playoff

SIUE Individual Scores

20. Melissa Lewis	186
24. Spring Riley	193
T 29 Vickie Byrd	197
31 Sarah Williams	199
40 Eryn Smith	211
T 41 Angie Duff	219

Tennis

Singles record

Sarah Hardimon	7-0
Herta Shikapwashwa	6-0
Amy Nagle	5-2
Ann Colter	3-4
Christy Ulavege	3-3
Sonya Wohltman	0-1
Erica Conway	4-2

Doubles record

Hardimon/Nagle	2-1
Nagle/Delaney	1-0
Colter/Shikapwashwa	2-0
Delaney/Wohltman	1-2
Hardimon/Shikapwashwa	4-0
Colter/Ulavege	2-0
Delaney/Shikapwashwa	1-0
Nagle/Colter	2-1
Delaney/Ulavege	0-2

Rec-Sports



Flag Football

AFC	W	L	F	Sportsmanship
Team Wetnight	2	0	0	10
Phi Psi	1	1	0	10
AGABUS	1	1	0	6
Pyromaniacs	1	1	1	5
Sigma Phi Epsilon	1	1	1	1
Alpha Kappa Lambda	0	2	1	10

AFC	W	L	F	Sportsmanship
Naturals I	2	0	0	9.5
Tri Lambs	2	0	0	9
Naturals II	1	1	0	7
507 Freakshow	1	1	0	7
Prairie Hall Lights	0	2	0	2.5
Merdeux	dropped			

Soccer

AFC	W	L	T	F	Sportsmanship
Phi Psi	2	0	0	0	9
The ELKS	2	0	0	0	9
Team TBA	1	0	0	0	10
Pride of Europe	1	0	0	0	9
Sokoor	1	1	0	0	9
England Dan	0	1	0	0	10
Sigma Pi	0	2	0	0	10
Sigma Phi					
Epsilon	0	2	0	1	3

Volleyball

North Division	W	L	F	Sportsmanship
Six Packs	2	0	0	10
The Angels	2	0	0	8.5
Domestic Animals	1	1	0	9
Alpha Sigma Tau	1	1	0	8.5
Service Masters	0	2	0	10
Phi Psi - I	0	2	0	10

South Division	W	L	F	Sportsmanship
Playas	2	0	0	9.5
Lower 500	1	1	0	10
Team Teasley	1	1	0	10
Army ROTC	1	1	0	9
SIU Superstars	1	1	0	8.5
Team Olympians	0	2	0	9.5

East Division	W	L	F	Sportsmanship
AGABUS	2	0	0	10
VIP	2	0	0	9.5
Phi Psi - II	1	1	0	8
Gamma Delta Iota	1	1	0	6
South Park Cows	0	2	0	9.5
Balls-n-Chains	0	2	0	9.5

West Division	W	L	F	Sportsmanship
Hi-Five	2	0	0	10
Gettin Around	2	0	0	9.5
Power House	1	1	0	9.5
10:40	1	1	0	9
Balaclava	0	2	0	10
Floor Play	0	2	0	9.5

ANDY

from page 10

enjoy good volleyball, you will find it here. And for those who think women's sports are too slow, come out and let these ladies pound a few balls in your direction. I guarantee you will change your mind.

Saturday is a HUGE game for the women's soccer team. They're off to a strong 3-1 start, but the St. Joseph's College Pumas are coming to town at 3 p.m. Saturday. The Pumas are ranked #6 nationally, and the present group of seniors on the Lady Cougars squad is 1-5 against St. Joe for their careers. Coach Brian Korbesmeyer has 99 career wins as the women's coach, and there would be no sweeter way to get #100 than to beat the Pumas. To do so, career leading scorer Janece Friederich will have to prove that she is one of the best in the nation. If Megan Beagles can match Friederich's intensity up top, they could be a deadly duo. In the backfield Karin Tighe and Tasha Siegel will have to be as vocal as they have ever been in directing others around. And for the freshmen, well, get ready for some big-time soccer. I hope to see you fans at the games this weekend. They should be exciting.

SOCCER

from page 10

Against Lewis University Sunday, SIUE played solid on defense, but couldn't get on the scoreboard.

Lewis found the net once in the 11th minute and again in the 85th minute to get past the Cougars 2-0.

Offense will be the key this weekend as SIUE tries to tally its first GLVC victory of the season.

"Our defense is playing well, but we have to pick up the scoring," Huneke said. "The injuries are a concern. We're not as deep as I'd like us to be."

The games against St. Joseph's and Indianapolis both start at 12:30 p.m.

Sensational Skiing

Colorado Ski Trip to Steamboat Springs, Colorado January 3 - 9, 1999



Trip Includes: Six nights of lodging in 6, 8 and 10 person condos at Timber Run Condominiums, four out of five days skiing (5th day optional), evening social gatherings and an overall fun packed vacation.

**\$299.00* for Students
\$327.00* for Faculty/Staff/Alumni
\$337.00* for Guest**

**Price includes a \$10.00 early payment discount.
To receive this discount you must have paid the \$100.00 deposit by October 15, 1998.*

Transportation is available by charter bus for \$95.00.

The bus will depart from the Student Fitness Center Saturday, January 2, 1999 at 4:00 p.m. and will return to the Student Fitness Center on January 10, 1999 at 6:00 a.m.

Two hours credit is available for this trip through the Kinesiology and Health Education Department

For more information or to get an application call the SFC at 650-B-FIT

SIUE Wellness Program • Campus Recreation, Student Affairs • 650-B-FIT



CAMPUS RECREATION

Look us up on the NET at <http://www.siu.edu/CREC> • Campus Recreation, Student Affairs

CASSENS RENTS

Cars • Vans • Trucks
Over 200 vehicles to choose from.

(618) 692-7386



CASSENS RENTAL
3333 South Hwy 159
Glen Carbon, IL 62034



«WICK'S»

GODFREY IL (618)466-2112

FRIDAY: YOUR MAJESTY

**SATURDAY: HOOPER & CATCHER
STUPID**

SUNDAY: SOUTH PARK (ON THE 10FT TV)

MONDAY: 25cent BUD LIGHT & THE EDDIES

TUESDAYS: 16" PIZZA 5.75

WEDNESDAYS: 25cent TACOS AND 1.50 CORONA'S & MARGARITA'S

4pm TO 8pm DAILY 20cent HOT WING'S

PARAMOUNT PICTURES PRESENTS IN ASSOCIATION WITH SNL STUDIOS
A LORNE MICHAELS AND AMY HECKERLING PRODUCTION "A NIGHT AT THE ROXBURY" WILL FERRELL CHRIS KATTAN DAN HEDAYA
MOLLY SHANNON RICHARD GRIECO DAVID KITAY ROBERT K. WEISS STEVE KORIN AND WILL FERRELL & CHRIS KATTAN
PG-13 PARENTS STRONGLY CAUTIONED
LORNE MICHAELS AND AMY HECKERLING JOHN FORTENBERRY www.theroxbury.com
COMING SOON TO THEATRES EVERYWHERE

Hollywood ★ Tan
 Voted SIUE's Best Tanning Salon 1998
\$1 TANS
 EVERY SUNDAY IN SEPTEMBER
 CALL TODAY 288-4560

**ROAD
 CLOSED**
 DETOUR 

Not to us! We're going straight ahead for treatments and cures for 40 neuromuscular diseases.

MDA
 Muscular Dystrophy Association

1-800-572-1717

People help MDA...because MDA helps people.

Pantera's
 PIZZA
 692-6000
 Montclair Shopping Center, Edwardsville

MONDAYS: 10% OFF w/SIUE ID
 Dine in or carry-out!

BUFFET \$2.99
 Pizza, Salad, Pasta, and Dessert...
 New York Style, Thin & Original Thick Crust

Pantera's
 Sun. Noon-2pm
 Mon. thru Fri. 11am-2pm
 Mon. thru Wed. 5:00-8:00pm

SAVE \$1.00

Dine-in only. Not valid with any offer or coupon. Limit 1 coupon per customer, per visit. Tax not included. Valid for up to 2 adults. Offer expires 9/30/98.

FREE Pitcher of Coke

Pantera's With the Purchase of a Medium or Large Pizza

Dine-in only. Not valid with any offer or coupon. Limit 1 coupon per customer, per visit. Tax not included. Valid for up to 2 adults. Offer expires 9/30/98.

Your Illinois Entertainment Center!

Bridges
 grill & bar

HOME OF THE \$.99 CENT BIG DAWG BURGER...

Every Wednesday Nite
SWING LESSONS
 with Laurel at 9pm and at 10pm
 LIVE ENTERTAINMENT:
HUDSON & the HOO DOO CATS

Bridges ~ 3145 West Chain of Rocks Rd. ~ Granite City Il. ~ 270 & Rt. 3
 (618) 797-0700

FOR the EDUCATION and RESEARCH COMMUNITY

AAA
 —S&P and Moody's rating for TIAA*

★★★★★
 —Morningstar rating for the CREF Stock Account, CREF Global Equities Account, CREF Equity Index Account, and CREF Growth Account**

"...America's Top Pension Fund."
 —Money Magazine, January 1998

Your service bowled me over!
 —William Ravdin, TIAA-CREF Participant

HIGH MARKS FROM MORNINGSTAR, S&P, MOODY'S, MONEY MAGAZINE AND BILL.

We take a lot of pride in gaining high marks from the major rating services. But the fact is, we're equally proud of the ratings we get every day from our participants. Because at TIAA-CREF, ensuring the financial futures of the education and research community is something that goes beyond stars and numbers. We became the world's largest retirement organization¹ by offering people a wide range of sound investments, a commitment to superior

service, and operating expenses that are among the lowest in the insurance and mutual fund industries.¹¹

With TIAA-CREF, you'll get the right choices—and the dedication—to help you achieve a lifetime of financial goals. The leading experts agree. So does Bill.

Find out how TIAA-CREF can help you build a comfortable, financially secure tomorrow. Visit our Web site at www.tiaa-cref.org or call us at 1 888 219-8310.



Ensuring the future for those who shape it.[™]

*These top ratings are based on TIAA's exceptional financial strength, claims-paying ability and overall operating performance. **Source: Morningstar, Inc., January 31, 1998. Morningstar is an independent service that rates mutual funds and variable annuities. The top 10% of funds in an investment category receive five stars and the next 22.5% receive four stars. Morningstar proprietary ratings reflect historical risk-adjusted performance and are subject to change every month. They are calculated from the account's three-, five-, and ten-year average annual returns in excess of 90-day Treasury bill returns with appropriate fee adjustments, and a risk factor that reflects performance below 90-day T-bill returns. The overall star ratings referred to above are Morningstar's published ratings, which are weighted averages of its three-, five-, and ten-year ratings for periods ending January 31, 1998. The separate (unpublished) ratings for each of the periods are:

Period	CREF Stock Account Star Rating/ Number of Domestic Equity Accounts Rated	CREF Global Equities Account Star Rating/ Number of International Equity Accounts Rated	CREF Equity Index Account Star Rating/ Number of Domestic Equity Accounts Rated	CREF Growth Account Star Rating/ Number of Domestic Equity Accounts Rated	CREF Bond Market Account Star Rating/ Number of Fixed Income Accounts Rated	CREF Social Choice Account Star Rating/ Number of Domestic Equity Accounts Rated
3-Year	4/1,856	4/391	5/1,856	5/1,856	4/675	4/1,856
5-Year	4/1,218	5/207	N/A	N/A	4/443	4/1,218
10-Year	5/612	N/A	N/A	N/A	N/A	N/A

¹Based on assets under management. ¹¹Standard & Poor's Insurance Rating Analysis, 1997; Lipper Analytical Services, Inc., Lipper-Director's Analytical Data, 1997 (Quarterly). CREF certificates and interests in the TIAA Real Estate Account are distributed by TIAA-CREF Individual and Institutional Services. For more complete information, including charges and expenses, call 1 800 842-2733, extension 5509, for the CREF and TIAA Real Estate Account prospectuses. Read them carefully before you invest or send money.

©1998 TIAA-CREF 700 Third Avenue, New York, NY

classifieds

HELP WANTED

Painter Part-Time Good equipment steady work interior exterior \$7-13/hr depending on skill and production. Reply Box 339 Edwardsville 62025
11/5/98

BABYSITTER - After School Hours 3 days per week 2 children. Collinsville. Must have own transportation. 345-2178
9/29/98

SPRING BREAK - PLAN NOW! Cancun, Jamaica, Mazatlan and S. Padre. Early Bird savings until Oct. 31st. Campus Sales Reps. Wanted. Earn Free Trips plus cash. 1-800-SURF-UP
www.studentexpress.com 10/15/98

Spring Break 99! Cancun • Nassau • Jamaica • Mazatlan • Acapulco • Bahamas Cruise • Florida • South Padre • Travel Free and make lots of Cash! Top reps are offered full-time staff jobs. Lowest price Guaranteed. Call now for details! www.classtravel.com 800/838-6411
9/24/98

Telemarketers Part-time Tuesday, Wednesday, Thursday 5:30-8:30. Spanish speaking a plus. Call Heidi 452-9000 or 978-3061
9/24/98

LifeCore Assoc., Specializing in Dental Recruiting, is looking for job candidates. We do placements for dentists, hygienist, dental assistants and receptionist. Our service is NO charge to you. Just fax us your resume 314-892-4550. To receive info call 1-888-367-5092
9/24/98

Now Hiring Full/ Part-time 18 years, valid drivers license, able to drive stick, customer skills. Various locations in Metro East. Call 259-7964 or 344-0459 envirotest Illinois, EOE M/F/D/V/ employer
10/15/98

Childcare Needed! 2 kids. M-F 7:30-8:30am and/or 5:00- 8:00pm T/TH. Must live in Cougar Village Apartments and Licensed. Call Tina 650-4009
9/24/98

Part Time Receptionist wanted for busy insurance office. Must be willing to get licensed. Evenings until 6:00 and three Saturdays per month from 9-1:00
452-9000 10/01/98

ALASKA EMPLOYMENT -Fishing industry. Excellent student earnings and benefits potential (up to 2,850+mo. + Room/Board) All skill levels. Don't pay outrageous agency fees! Ask us how. 517-336-4171 ext. A57401
10/29/98

Spring Break \$99 Cancun, Mazatlan or Jamaica from \$399. Reps wanted! Sell 15 and travel free! **LOWEST PRICES GUARANTEED!!** Info: Call 1-800-446-8355
www.sunbreaks.com 10/27/98

Part-Time Lunch Cook Position. Experienced only! Competitive wage. Apply in person 2p.m. - 4p.m. Neruda, #4 Club Centre, Edwardsville. No phone calls.
9/24/98

PERSONALS

ATTENTION GRE TAKERS! Anyone taking the Princeton Review Course in St. Louis? Starting Oct. 3. We could Carpool! Contact Laura ASAP 659-9833
9/22/98

PHOTOGRAPHER will trade photos 5" x 7" color proofs for modeling time. Females, all sizes and types. http://members.aol.com/SnstPhoto or 314-647-1960 for information.
9/24/98

Want your favorite ΦΚΨ and ΔΦΕ kiss a pig? Stop by our table in the UC during Greek Week and make it happen!!
9/24/98

D-Ception of S.S.II.G.S.O.A would like to wish Alpha Phi Alpha Fraternity Inc. and all Greeks a happy Greek Wee. "O6" A-Ya A-Ya A-Ya...
9/24/98

Join the latest Click...

<http://www.siu.edu/ALESTLE/Alestle.html>

FOR SALE

1990 Nissan Sentra, 4 speed, air, runs good but needs work. \$800.00 as is! (618) 288-0260
9/24/98

Used Books at bargain prices. Good Buy Bookshop, Lovejoy Library Room 0012, Wednesdays and Thursdays 11am-3pm. Sponsored by Friends of Lovejoy Library.
12/03/98

1985 Mustang GT 5.0, 5-spd red 43K original miles. Great condition. \$6000 o.b.o. Contact 462-5394
10/01/98

MISCELLANEOUS

Latin American Dance Lessons at Fitness Center Section A of gymnasium 7:00- 8:00p.m. Tuesday and Thursday of September.
9/29/98

AUTO INSURANCE

- ✓ **LOWEST RATES**
- ✓ **NO ONE REFUSED**
- ✓ **CREDIT CARDS OK**
- ✓ **FAST PHONE QUOTES**
- ✓ **LOW DOWN PAYMENTS**

GREG SCHMIDT AGENCY
188 North Main, Edwardsville
656-9086

Placing a classified ad the Alestle

Frequency Rates

(For billing purposes, five (5) words equal one line)
All classifieds and personals must be paid in full prior to publication.

1 run: \$1.00/line 5 runs: \$.90/line
(2 line minimum) 20 runs: \$.8/line
3 runs: \$.95/line Personals: \$.50

Adjustments

Please read your ad on the first day it appears. If you cannot find your ad or discover an error in your ad, call 692-3528 or come into the office. Positively no allowance made for errors after the first insertion of advertisement. No allowance of correction will be made without a receipt.

Placing Ads

To place a classified ad, come to the Office of Student Publications, located in the UC, Rm. 2022, and fill out a classifieds form.

Deadlines

Tuesday Publication: Noon Friday
Thursday Publication: Noon Tuesday

Office Hours: Monday thru Friday: 8am - 4:30pm 692-3528

Large One Bedroom Apartment with Loft

Washer/Dryer hook-up. Appliances and water included. Very clean and plenty of storage space plus yard!

\$395.00 plus deposit
656-9204

★ **FIVE STAR** ★
★ **BILLIARDS** ★
★ Drink Specials ★
★ Tues., Wed., Thurs. ★
★ Music Saturday ★
★ (No Cover) ★
★ 111 W. Market St. ★
★ Downtown Troy ★
★ 667-1017 ★

BIG LOTS

The Closeout Store



\$4.99
Fill a Busties
Pepperoni on a
tender bread crust

\$2.59
Advance Chicken
Cheese Nuggets
(microwavable)

\$1.79
Homestyle Turkey Breast
w/gravy, stuffings, &
mashed potatoes

99c
Totino's
Nachos

OPEN MON. - SAT. 9 AM - 9 PM
SUN 10 AM - 7 PM



UNIVERSITY CENTER BOARD

MUSTARD PLUG IS COMING

TO SIUE!!



From Grand Rapids, Michigan

One of the best Ska bands in the world will be playing at the Meridian Ballroom in the Morris University Center

Thursday, October 8th

Doors open at 7:30 PM, show starts at 8:00PM

Tickets go on sale Monday, Oct.28th

at Union station in th U.C.

SIUE students \$1.00 Everyone else \$ 2.00

Become part of the programming team.

Call 650-3371 for more information

UCB Hotline (618) 650-3372

Sharky's Bar & Grill NOW HIRING

All Positions
apply in person
2537 Vandalia
Maryville IL
Just minutes from SIUE
Down Hwy 159

PLEDGING OUR ALLEGIANCE



United States
NAVY

1-800-USA-NAVY
www.navyjobs.com

RESUME



**Busy Bee
Copy Service**
(618) 656-7155
311 North Main Street

TYPEOGRAPHY • PHOTOGRAPHY • ART

OFFSET REPRODUCTION • FOLDING

THE BOOK ROOK



(Formerly Dawn's Olde Book Shop)

305 N.Main
Edwardsville, IL
659-8553

Selling and Trading Used Books
New Owner
New Look
New Deals

Thousands of books for all ages.

Treat yourself to a
new old book.

New Hours

Mon. Tue, Thurs. Fri 9:00 to 5:30
Wed 9:00 to 4:30
Sat 9:00 to Noon

Bring in this ad for 10% off your purchase
Sept 8th through the 30th, 1998