

East Tennessee State University Digital Commons @ East Tennessee State University

ETSU Faculty Works

Faculty Works

4-4-2017

Real-time Insight : Developing a Internal Library Data Dashboard

Travis Clamon

East Tennessee State University, clamon@etsu.edu

Follow this and additional works at: <https://dc.etsu.edu/etsu-works>



Part of the [Computer Engineering Commons](#)

Citation Information

Clamon, Travis. 2017. Real-time Insight : Developing a Internal Library Data Dashboard. *Electronic Resources and Libraries Conference*, Online. <https://sched.co/8wbo>

This Presentation is brought to you for free and open access by the Faculty Works at Digital Commons @ East Tennessee State University. It has been accepted for inclusion in ETSU Faculty Works by an authorized administrator of Digital Commons @ East Tennessee State University. For more information, please contact digilib@etsu.edu.

Real-time Insight : Developing a Internal Library Data Dashboard

Real-time Insight: Developing an Internal Library Dashboard



Travis Clamon, MSIS
Electronic Resource Librarian

clamon@etsu.edu

April 4th, 2017



Electronic Resources and Libraries

Library Data Dashboards

- Feasible
- Visibility
- Time Savings

Better manage your environment



Dashboard Platforms

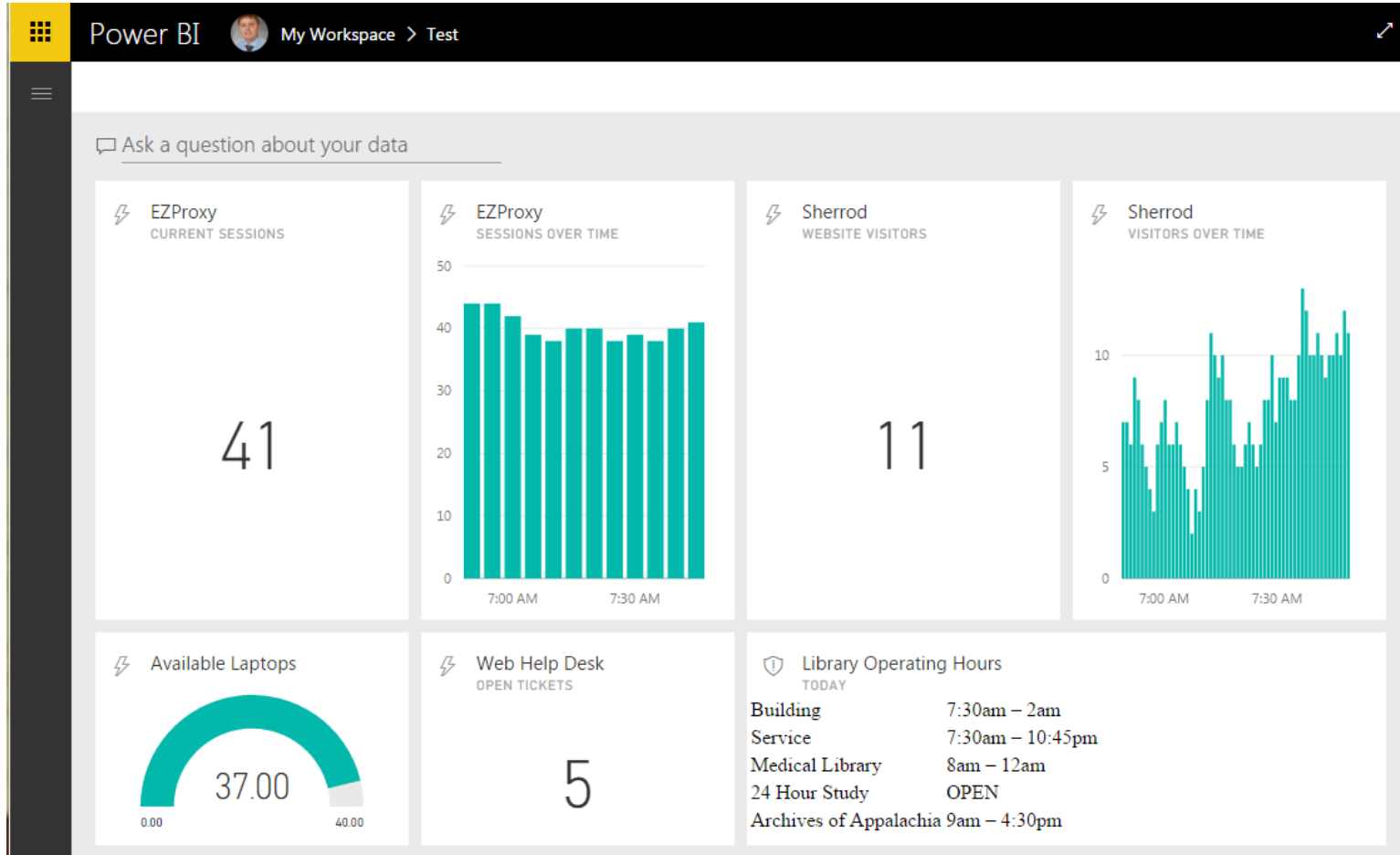
Competitors:

- Tableau
- GeckoBoard
- Microsoft Power BI
- Notion
- Many more...

Features:

- Pricing
- Limitations
- Mobile App
- Public View





Pros:

- Discovered in Office 365
- Free and paid version available (\$10/month)
- Unlimited Dashboards
- Easy to use

Cons:

- Public Sharing

Power BI - Streaming Datasets

1) Create Dataset

- Name
- Values

New streaming dataset

Create a streaming dataset and integrate our API into your device or application to send data. [Learn more about the API.](#)

Dataset name *

Values from stream *

Historic data analysis

Off



Power BI - Streaming Datasets

✓ Streaming dataset created

The schema for Test is created.

Push URL

<https://api.powerbi.com/beta/91234-56789-123456-1044-baec43c3d741/dat>

Raw

cURL

PowerShell

```
curl --include \  
--request POST \  
--header "Content-Type: application/json" \  
--data-binary "[  
  {  
    \"Test\" : 98.6  
  }  
]" \  
"https://api.powerbi.com/beta/123456789-1234-4349-bad3-b  
aec43c3d741/datasets/d64b3f1b-9d56-4956-40rf-dgdgdfgfdge  
e455/rows?key=VzantTZ8opP3cox72%kjljl%ifdsoi%2Blo3TDCGqI  
3onTQQpKrHaVErkE1A4wxT3Ybg%3D%3D"
```

2) Integrate your code

- cURL or PowerShell

3) Run Script

- Automate script with CronTab or other solution



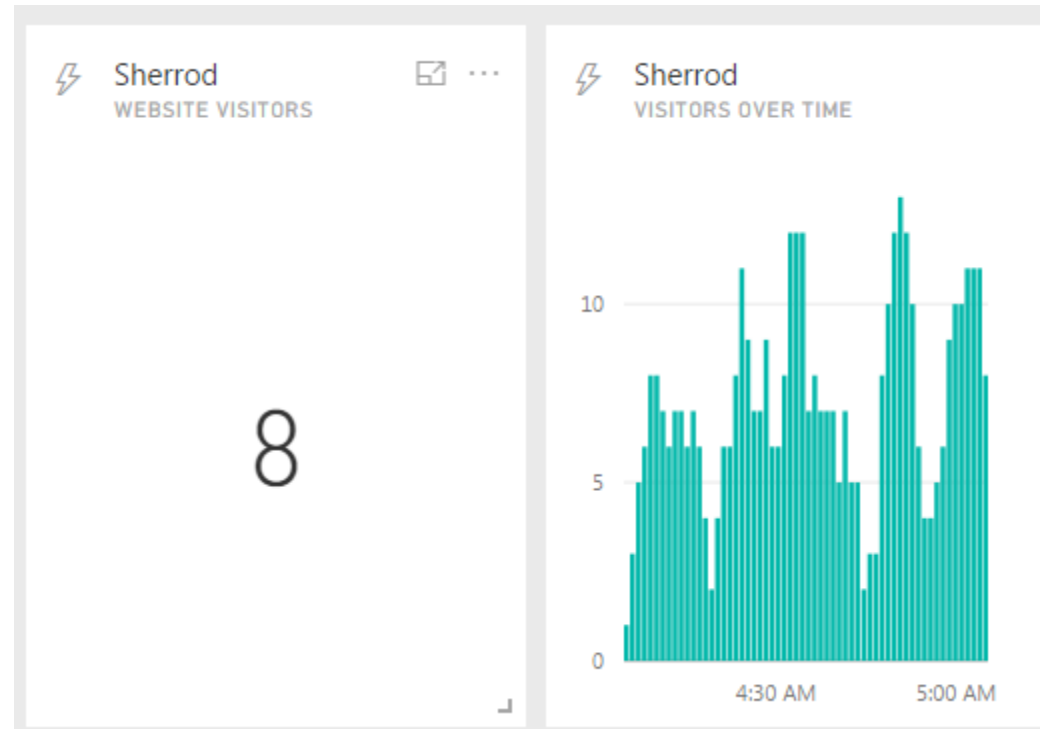
Library Website

Power BI Tiles

- Real-time visitors
- Visitors over time

Mechanism

- Custom server script
- Reports every minute



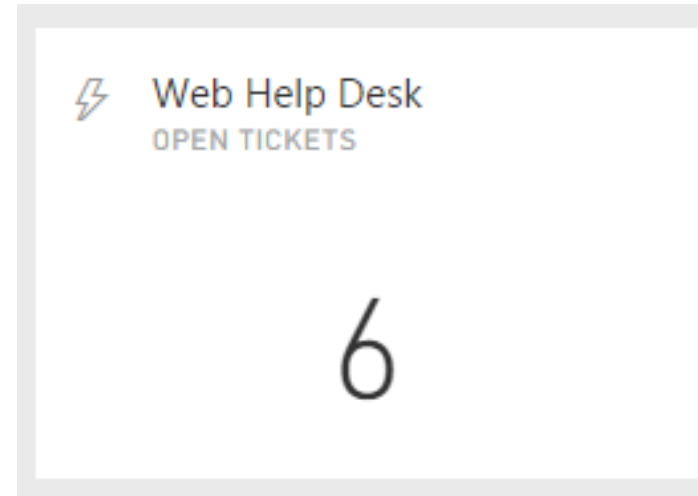
Help Desk

Power BI Tiles

- Open Tickets

Mechanism

- WebHelpDesk API
- Every 5 Minutes



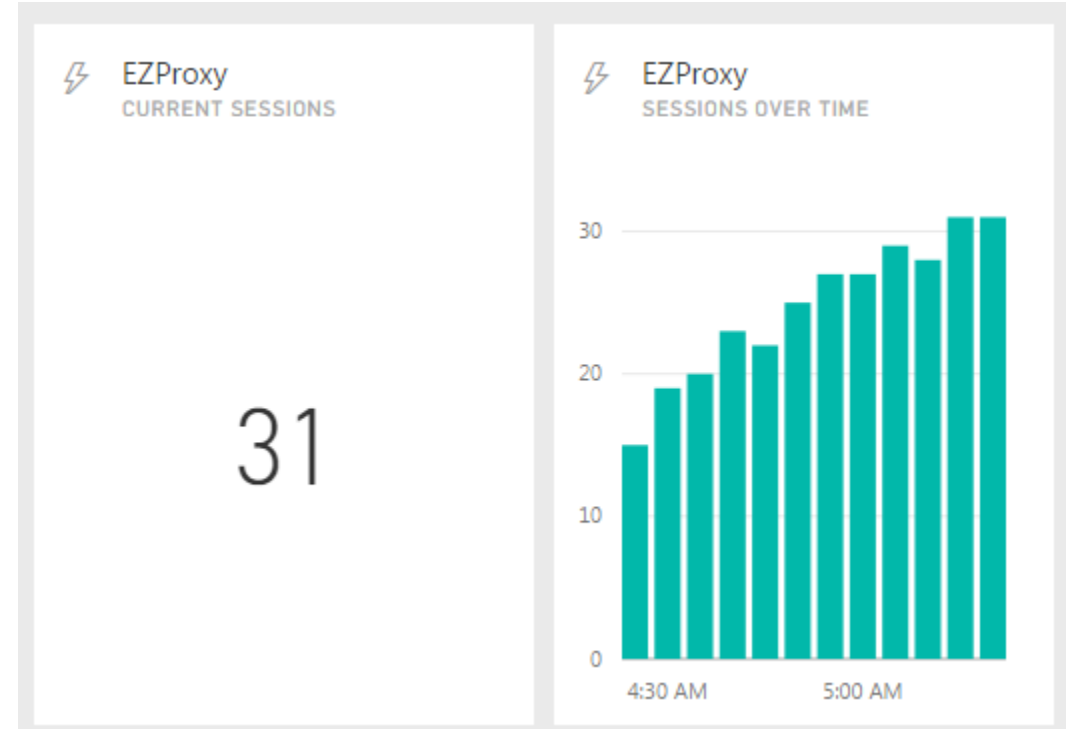
EZProxy

Power BI Tiles

- Current Sessions
- Sessions over time

Mechanism

- Custom server script
- Reads audit file
- Looks for login/logout events
- Reports every 5 minutes



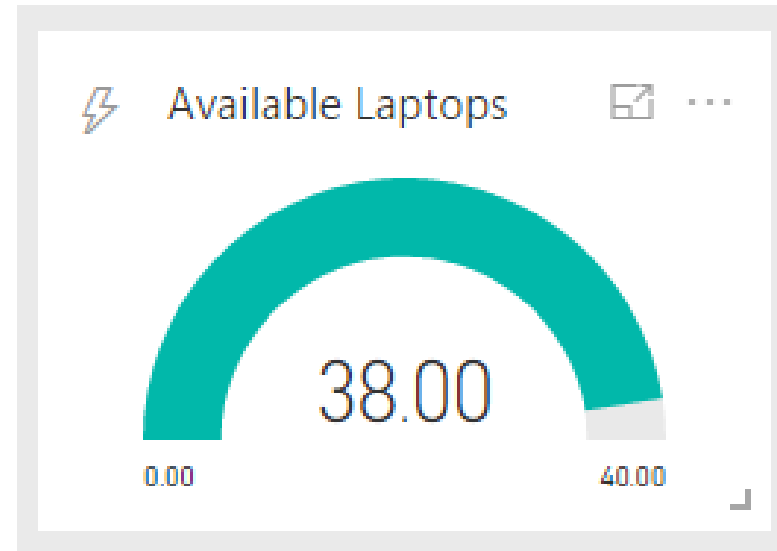
Laptop Checkout

Power BI Tiles

- Available Laptops

Mechanism

- ExLibris Alma API
- Every 5 Minutes



Primo

Power BI Tiles

- Daily Visitors
- Number of Searches

Mechanism

- Google Analytics API
(work in progress)

Daily Visitors

333

% of Total: 100.00% (333)

Total Unique Searches

843

% of Total: 100.00% (843)



Future Dashboard Goals

COUNTER Stats

- JR1, BR1, BR2, DB1
- ExLibris Alma Analytics API

LibGuides

- Available Rooms

EZProxy

- Further Analysis of Logs

Computer Availability

- Available Computers



Office Integration



PowerBI + iPad + Mophie Powerstand



Thank You!



Questions?

Travis Clamon, MSIS

Electronic Resource Librarian

clamon@etsu.edu