

3-5-2018

# The Adipokine C1q Tnf Related Protein 3 (CTRP3) Is Elevated in the Breast Milk of Obese Mothers

Megan R. Kwon

*East Tennessee State University*

Eileen M. Cress

*East Tennessee State University, cress@etsu.edu*

W. Andrew Clark

*East Tennessee State University, clarkw@etsu.edu*

Arsham Alamian

*East Tennessee State University, alamian@etsu.edu*

Yongke Lu

*East Tennessee State University*

*See next page for additional authors*

Follow this and additional works at: <https://dc.etsu.edu/etsu-works>



Part of the [Nutritional and Metabolic Diseases Commons](#)

---

## Citation Information

Kwon, Megan R.; Cress, Eileen M.; Clark, W. Andrew; Alamian, Arsham; Lu, Yongke; and Peterson, Jonathan M.. 2018. The Adipokine C1q Tnf Related Protein 3 (CTRP3) Is Elevated in the Breast Milk of Obese Mothers. *PeerJ*. Vol.6 e4472. <https://doi.org/10.7717/peerj.4472> ISSN: 2167-8359

This Article is brought to you for free and open access by the Faculty Works at Digital Commons @ East Tennessee State University. It has been accepted for inclusion in ETSU Faculty Works by an authorized administrator of Digital Commons @ East Tennessee State University. For more information, please contact [digilib@etsu.edu](mailto:digilib@etsu.edu).

---

# The Adipokine C1q Tnf Related Protein 3 (CTRP3) Is Elevated in the Breast Milk of Obese Mothers

## Copyright Statement

© 2018 Kwon et al. This document was originally published in the *PeerJ*.

## Creative Commons License

Creative

Commons Attribution 4.0 License.

Attribution

4.0

License

Creator(s)  
Megan R. Kwon, Eileen M. Cress, W. Andrew Clark, Arsham Alamian, Yongke Lu, and Jonathan M. Peterson

# The adipokine C1q TNF related protein 3 (CTRP3) is elevated in the breast milk of obese mothers

Megan R. Kwon<sup>1</sup>, Eileen Cress<sup>2</sup>, W. Andrew Clark<sup>1</sup>, Arsham Alamian<sup>3</sup>, Yongke Lu<sup>4</sup> and Jonathan M. Peterson<sup>4</sup>

<sup>1</sup> Department of Allied Health Sciences, College of Clinical and Rehabilitative Health Sciences, East Tennessee State University, Johnson City, TN, USA

<sup>2</sup> James H. Quillen VA Medical Center, Mountain Home, TN, USA

<sup>3</sup> Department of Biostatistics and Epidemiology, College of Public Health, East Tennessee State University, Johnson City, TN, USA

<sup>4</sup> Department of Health Sciences, College of Public Health, East Tennessee State University, Johnson City, TN, USA

## ABSTRACT

**Background:** C1q TNF related protein 3 (CTRP3) is a relatively novel hormonal factor primarily derived from adipose tissue and has anti-diabetic properties. To determine if CTRP3 could play a role in early childhood development, the purpose of this study was to establish the presence of CTRP3 in breast milk (BM) and to determine whether CTRP3 levels were correlated with pregravid obesity status of the mother.

**Methods:** Breast milk was collected from breast-feeding mothers who had a pregravid body mass index (BMI) classification of normal weight (BMI 18–25 kg/m<sup>2</sup>, *n* = 23) or obese (BMI > 30 kg/m<sup>2</sup>, *n* = 14). Immunoprecipitation followed by immunoblot analysis confirmed the presence of CTRP3 in BM. The concentration of CTRP3 in BM samples was determined by ELISA. Additional bioactive components were also measured by commercially available assays: ghrelin, insulin, leptin, adiponectin, interleukin-6 (IL-6), tumor necrosis factor-alpha (TNF- $\alpha$ ), and glucose. Bioactive components in normal weight and obese mothers were compared using unpaired *t*-test (parametric) and Mann–Whitney *U*-test (non-parametric), as appropriate.

**Results:** The primary findings of this study are that the adipokine CTRP3 is present in BM and CTRP3 levels are increased with pregravid obesity. Additionally, this study independently confirmed previous work that BM from obese mothers has a higher concentration of insulin and leptin. Further, no differences were observed in BM between obese and normal weight mothers in ghrelin, adiponectin, IL-6, TNF- $\alpha$ , or glucose levels.

**Conclusion:** This study identified a novel factor in BM, CTRP3, and showed that BM CTRP3 levels higher in obese mothers. Because of the purported insulin sensitizing effect of CTRP3, it is possible that the elevated levels of CTRP3 in the BM of obese mothers may offset negative effects of elevated leptin and insulin levels in the BM of obese mothers. Future studies will need to be conducted to determine the relevance of CTRP3 in BM and to examine the presence of other adipose tissue-derived hormonal factors.

Submitted 13 July 2017

Accepted 17 February 2018

Published 5 March 2018

Corresponding author

Jonathan M. Peterson,

petersonjm1@etsu.edu

Academic editor

Salvatore Andrea Mastrolia

Additional Information and  
Declarations can be found on  
page 10

DOI 10.7717/peerj.4472

© Copyright

2018 Kwon et al.

Distributed under

Creative Commons CC-BY 4.0

OPEN ACCESS

**Subjects** Diabetes and Endocrinology, Epidemiology, Pediatrics, Women's Health

**Keywords** CTRP3, Dipokine, Breast milk, Obesity

## INTRODUCTION

Childhood obesity is a growing epidemic in the United States (U.S.), with prevalence increasing from ~7% in 1980 to 17.7% in 2012 (*National Center for Health Statistics (U.S.), 2015; Ogden et al., 2014; Troiano & Flegal, 1998*). Further, obese children are at a significantly higher risk for developing many types of cancers, cardiovascular disease, diabetes, and metabolic syndrome (MetS) (*Ekelund et al., 2009; Friend, Craig & Turner, 2013; Maligie et al., 2012*). Therefore, understanding factors that contribute to childhood obesity are of great importance. Epidemiological evidence suggests breastfeeding protects against obesity and metabolic disorders, however the cause(s) of these associations are unknown (*Gillman, 2002; Global BMI Mortality Collaboration et al., 2016; Harder et al., 2005; Horta, Loret de Mola & Victora, 2015; Kalliomaki et al., 2008; Lemas et al., 2016; Taveras et al., 2011; Toschke et al., 2002; Yan et al., 2014; Young et al., 2017; Zalewski et al., 2017*). Further, the breastfeeding-derived defense against infant obesity and metabolic disorders is not universal across all lactating mothers (*Woo & Martin, 2015*). BM is a complex solution that contains the nutrients needed to sustain growth and development of a newborn. In addition, BM contains a variety of non-nutritive bioactive components (e.g., hormones, cytokines, etc.) that can influence metabolic function, which may explain the beneficial effects of breastfeeding (*Fields, Schneider & Pavela, 2016; Garcia-Mantrana & Collado, 2016; Lemas et al., 2016; Socha et al., 2016*).

On the other hand, animal studies have indicated the potential for BM to promote the transfer of obesity from mother to offspring (*Del Prado, Delgado & Villalpando, 1997; Mackay et al., 2013; Matsuno et al., 1999; Oosting et al., 2015; Palou et al., 2010; Sun et al., 2012; Tsuduki et al., 2013*). The influence of factors within the BM, which could contribute to the maternal transfer of obesity, have rarely been studied. One potential development is the presence of adipose tissue-derived hormonal factors in BM, such as adiponectin and leptin (*Casabiell et al., 1997; Çatli, Olgaç DüNDAR & DüNDAR, 2014; Fields, Schneider & Pavela, 2016; Garcia-Mantrana & Collado, 2016; Lemas et al., 2016; Sanchez et al., 2005; Savino et al., 2002; Socha et al., 2016*). Adipose tissue is a dynamic tissue that secretes many bioactive molecules, collectively termed adipokines, and many adipokines have been identified in BM (*Casabiell et al., 1997; Çatli, Olgaç DüNDAR & DüNDAR, 2014; Fields & Demerath, 2012; Fields, Schneider & Pavela, 2016; Lemas et al., 2016; Young et al., 2017*). It is well documented that dysregulation of adipokines can lead to inflammation, insulin resistance, atherosclerosis, hypertension, hyperphagia (overeating), and the development of MetS (*Pardo et al., 2012; Rutkowski, Stern & Scherer, 2015*). Recently published studies have reported changes to a number of hormones, specifically leptin and insulin, in BM from obese compared with normal weight mothers (*Kuganathan et al., 2017; Lemas et al., 2016; Ley et al., 2012*). Others have identified associations with adipokine levels in BM and infant growth (*Çatli, Olgaç DüNDAR & DüNDAR, 2014; Chan et al., 2017; Fields, Schneider & Pavela, 2016*).

*Khodabakhshi et al., 2017; Savino et al., 2002*). Due to the permeability of the digestive tract in early infancy non-nutritive bioactive factors, such as adipokines, can be transferred to the infant's circulation (*Sanchez et al., 2005; Shehadeh, Sukhotnik & Shamir, 2006*), where they are positioned to influence infant physiology. The presence of these adipokines in BM suggests that they contribute to the regulation of development and energy balance in early infancy. Further, deregulation of these factors could contribute to the development of metabolic disorders in childhood and adulthood.

Recently a family of novel secreted humoral factors, C1q TNF related proteins (abbreviated CTRP1-15) have been identified. The initial characterization of these adipose tissue-derived CTRP factors established wide-ranging effects on stimulating metabolism and preventing inflammation (*Peterson et al., 2012; Peterson, Wei & Wong, 2010; Wong et al., 2004; Yoo et al., 2013*). In particular, C1q TNF related protein 3 (CTRP3) is a novel exciting and unique adipokine which has demonstrated a number of anti-diabetic properties, specifically in regard to lipid metabolism and cardiovascular function (*Li et al., 2016; Petersen et al., 2016; Peterson et al., 2013; Peterson, Wei & Wong, 2010; Yoo et al., 2013*). The purpose of this manuscript is two-fold: first, is to establish the presence of CTRP3 in breast milk (BM); second, is to determine whether the concentration of CTRP3 is different in BM from normal weight compared with obese mothers.

## METHODS

### Study design and subjects

This descriptive study derives from BM collected from women who had a self-reported normal weight pregravid body mass index (BMI) in  $\text{kg/m}^2$  of 18–25 (normal weight) or  $\geq 30$  (obese), 18–45 years of age, and between two and 14 weeks of lactation. Subjects were recruited from the Breastfeeding Advocacy Benefits Everyone (BABE) Breastfeeding Coalition of Northeast Tennessee ([http://breastfeedingsupportnet.com/providers/providers\\_about.asp](http://breastfeedingsupportnet.com/providers/providers_about.asp)). Self-reported pregravid height and weight have been reported to be highly correlated with direct physical measurements (*Shin et al., 2014*), and for the purposes of this study were sufficient to categorize participants as either normal weight or obese. Signed written informed consent was obtained from all participants and all study procedures were approved by East Tennessee State University's Institutional Review Board (IRB No 0915.8s, 2016). Exclusion criteria included BMI  $< 18 \text{ kg/m}^2$  or  $26\text{--}30 \text{ kg/m}^2$ , diagnoses with type 1 diabetes, non-breastfeeding, or other significant health issue requiring medical treatment.

### Sample collection and preparation

Subjects were screened to confirm eligibility and instructed to pump at home immediately prior to their regularly scheduled BABE group meeting. Subjects transported the samples on ice where they were collected and immediately transported (on ice) to the lab. At the lab they were vortexed and skim milk was prepared by centrifugation (20,000g, 15 min, 4 °C). Skim milk was stored at  $-80 \text{ }^\circ\text{C}$  until further analysis. All samples were collected prior to start of the meeting and reported to have been produced within 2 h of collection by investigators.

### CTRP3 immunoprecipitation

Co-immunoprecipitation (Co-IP) procedures were performed at 4 °C unless otherwise indicated, using a Dynabeads<sup>®</sup> Protein A magnetic beads, according to manufacturer's instructions (Cat#10016D; Thermo Fisher Scientific, Waltham, MA, USA). Briefly, 50  $\mu$ l of Dynabeads<sup>®</sup>-Ab complex bead slurry were prepared with 5  $\mu$ g rabbit polyclonal anti-CTRP3 (GW Wong Lab; Johns Hopkins University Cat# WongLab\_anti-gM3 Lot# RRID: AB\_2572292) (*Peterson, Wei & Wong, 2010*), 5  $\mu$ g rabbit polyclonal anti-CTRP1 (GW Wong Lab; Johns Hopkins University Cat# anti-gCTRP1, RRID:AB\_2716247) (*Wong et al., 2008*), 10  $\mu$ l normal goat serum (Cat# 10000C; Thermo Fisher Scientific, Waltham, MA, USA, RRID:AB\_2532979), or phosphate-buffered saline (PBS) alone. The antibody-bead slurry was rotated for 15 min at room temperature and then separated from the solution using the magnetic stand. The beads were then washed with PBS+T (pH 7.4 with 0.02% Tween<sup>®</sup>-20), before the addition of 50  $\mu$ l BM (diluted 1:10 in PBS, 500  $\mu$ l final volume). The solution was then incubated for 4 h at 4 °C with rotation to allow CTRP3 to bind to the Dynabeads<sup>®</sup>-Ab complex. The tubes were returned to the magnet and the supernatant (unbound protein solution) was collected and denatured at 70 °C for 10 min after the addition of an equal amount of 2 $\times$  SDS loading buffer (4% SDS, 10% 2-mercaptoethanol, 5 mM DTT, 20% glycerol, 0.004% bromophenol blue, 0.125M Tris-HCl, pH 6.8). The Dynabeads<sup>®</sup>-antibody-CTRP3 complex were then washed three times in supplied wash buffer. Next, CTRP3 was removed from the beads with the addition of 20  $\mu$ l of the vendor supplied elution buffer and 20  $\mu$ l 2 $\times$  SDS loading buffer and heating at 70 °C for 10 min. The tube was placed on the magnetic rack and the supernatant was collected as the immunoprecipitate solution.

### Immunoblot analysis

The unbound protein solution and immunoprecipitate solution were loaded onto an SDS-polyacrylamide gel and proteins were separated by electrophoresis, according to manufactures directions (Cat#456-1046; Bio-Rad Laboratories, Inc., Hercules, CA, USA) with the addition of a protein ladder (Cat#161-0374; Bio-Rad Laboratories, Inc., Hercules, CA, USA). After gel electrophoresis proteins were transferred to a nitrocellous membrane according to standard procedures (Cat# 1620115; Bio-Rad Laboratories, Inc., Hercules, CA, USA). To reduce non-specific protein interactions the membrane was then blocked in 4% non-fat milk for 1 h at room temperature, and then probed with verified goat anti-CTRP3 primary antibody (Cat# AF2436; R and D Systems, Minneapolis, MN, USA, RRID:AB\_2067713) followed by HRP-conjugated rabbit anti-goat secondary antibody (Cat# 31402; Thermo Fisher Scientific, Waltham, MA, USA, RRID: AB\_228395). Chemiluminescent signals were detected (chemiluminescent HRP substrate, Cat# WBKLS0100; Millipore, Burlington, MA, USA) and quantified using the Alphaview software and FluorChem M Western Imaging System (Proteinsimple, San Jose, CA, USA).

### Analysis of bioactive compounds in BM

Ghrelin, insulin, leptin, adiponectin, interleukin-6 (IL-6), and tumor necrosis factor-alpha (TNF- $\alpha$ ) were measured with Bio-Plex<sup>®</sup> Multiplex Immunoassay System (Bio-Rad Bio-Plex

Cat# 171A7001M, 171A7002M, 171B5006M, and #171B5026M; Bio-Rad, Hercules, CA, USA). CTRP3 levels were determined by commercially available human CTRP3 ELISA kit (Cat# SK00082-07; Aviscera Biosciences, Santa Clara, CA, USA) according to manufacturer's protocol. Glucose levels were measured by glucose assay (Cat# CBA086; Millipore, Burlington, MA, USA). All assays were performed on samples diluted 1:2 in provided kit specific assay buffer, and performed otherwise according to manufactures directions. The intra- and inter-assay coefficients of variation for all assays were  $\leq 10\%$  and  $\leq 6\%$ , respectively

### Statistical analysis

Descriptive statistics were calculated for age, height, pregravid body weight, parity, postpartum day of lactation, and for all measured BM variables. A D'Agostino and Pearson omnibus normality test was performed on all variables and the data for ghrelin, insulin, leptin, IL-6, TNF- $\alpha$ , and CTRP3 were skewed. All remaining variables were normally distributed: Age, height, weight, BMI, glucose, and adiponectin. Therefore, differences in skewed data were compared by Mann–Whitney *U*-test and normally distributed data were compared by unpaired *t*-test. Correlations between measured variables and CTRP3 were analyzed by Spearman nonparametric correlation test. All data are reported as means and standard error. All statistical analysis was performed by Graphpad Prism 6.

## RESULTS

### Subject characteristics

Thirty-seven women with a pregravid BMI (mean:  $27.4 \pm 7.0$  kg/m<sup>2</sup>; range of 19.6–45.5 kg/m<sup>2</sup>) enrolled into the study. The ethnic distribution of the sample was Caucasian (97.2%) and African–American (2.7%). Subject descriptive statistics are presented in [Table 1](#).

### Verification of CTRP3 in human BM

To verify that CTRP3 was present in human BM an immunoprecipitation reaction with rabbit anti-CTRP3 antibody was performed, followed by an immunoblot using a second (goat polyclonal) CTRP3 antibody. This approach was able to detect a specific enrichment of CTRP3, thus demonstrating that CTRP3 is present in human BM ([Fig. 1A](#)). Analysis of the BM samples showed a large variation in the concentration of CTRP3, which did not follow a normal distribution: mean 18.0 ng/mL, standard deviation 22.1 ng/mL, range 2.6–81.8 ng/mL, median 6.5 ng/mL, 25% percentile 4.1 ng/mL, and 75% percentile 25.0 ng/mL. A Mann–Whitney *U*-test showed a significant difference in the means of BM CTRP3 levels between obese and normal weight mothers ([Fig. 1B](#)).

### Differences in BM composition

The values for all measured analytes in BM samples are presented in [Fig. 2](#), with values for each participant reported in supplemental data ([Table S1](#)). BM concentration of glucose ( $p = 0.19$ ), TNF- $\alpha$  ( $p = 0.23$ ), IL-6 ( $p = 0.74$ ), ghrelin ( $p = 0.13$ ), and adiponectin ( $p = 0.66$ ) were not different between normal weight and obese mothers. However, insulin levels were three times higher in BM from obese mothers (normal weight  $186.1 \pm 37.0$  vs

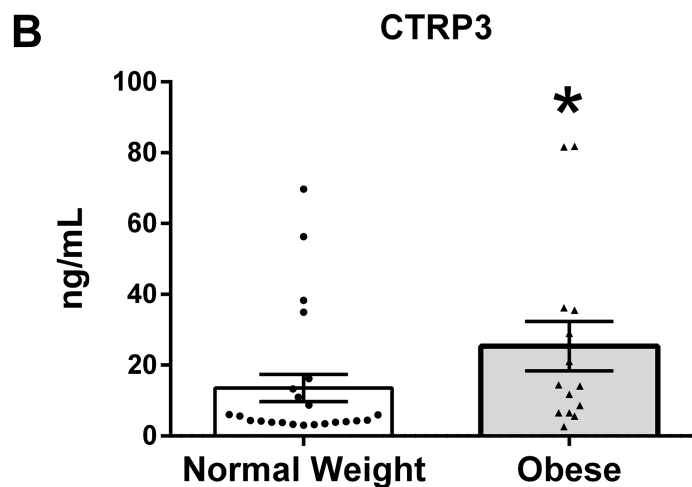
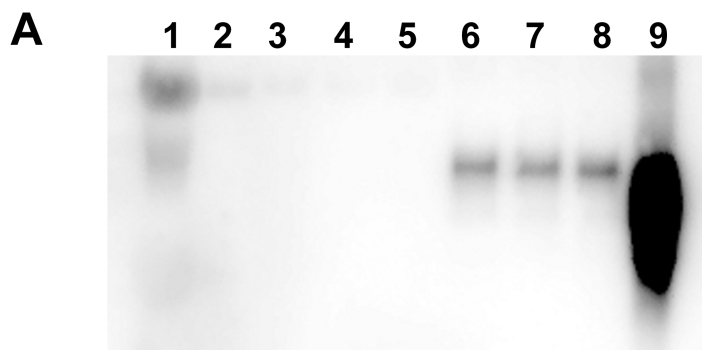


**Table 1** Subject characteristics.

	Normal weight ( <i>n</i> = 23)	Obese ( <i>n</i> = 14)
Maternal age (year)	29.0 ± 1.0	29.6 ± 1.1
Parity	2.0 ± 0.2	2.1 ± 0.2
Postpartum day of lactation	59.7 ± 6.0	52.6 ± 9.4
Height (cm)	165.9 ± 1.22	164.5 ± 1.6
Pre gravid weight (kg)	61.2 ± 1.1	98.0 ± 2.8*
Pre gravid BMI (kg/m <sup>2</sup> )	22.02 ± 0.4	36.3 ± 1.1*

Note:

\* Denotes significant difference between groups ( $p < 0.05$ ).

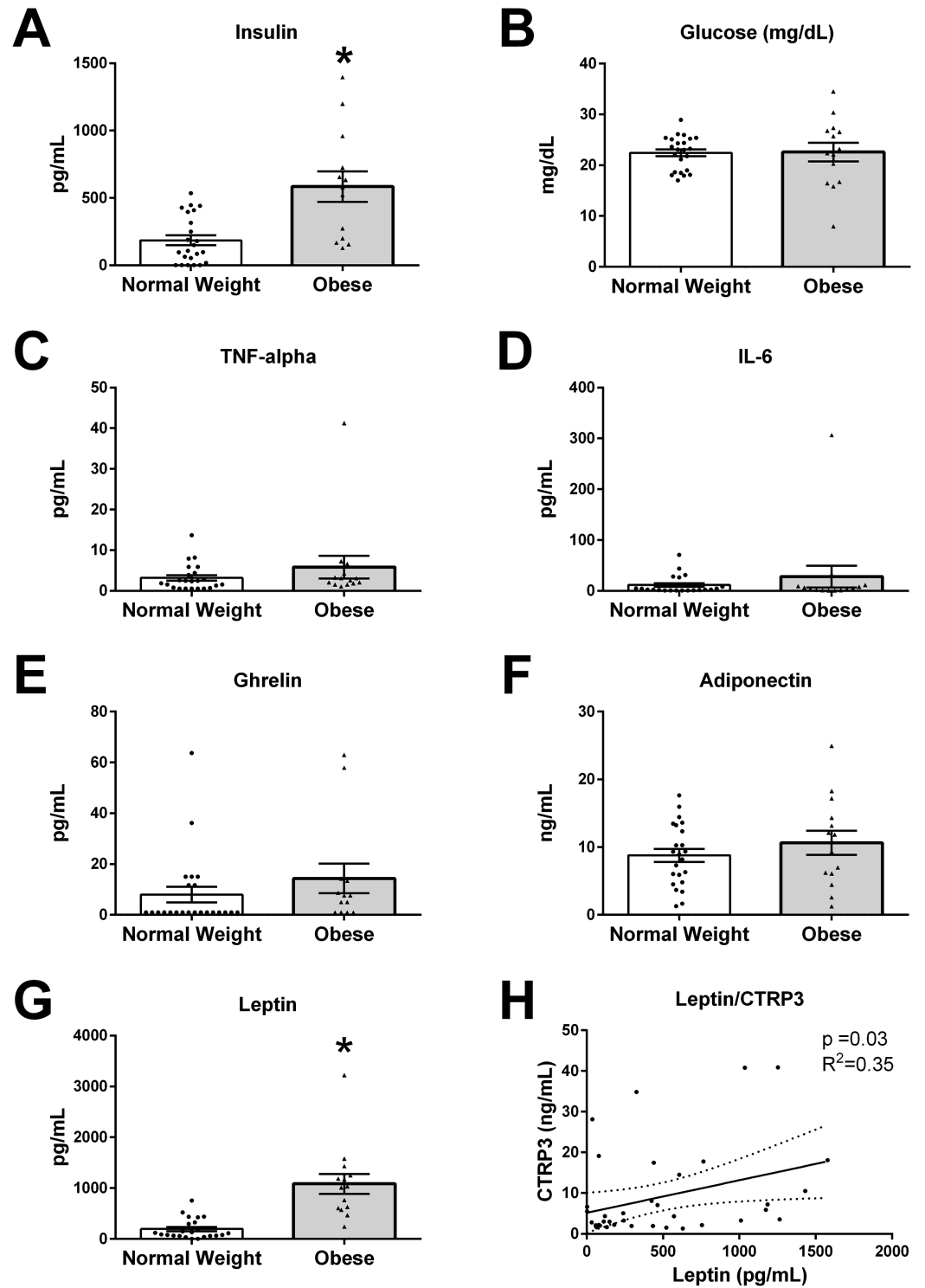


**Figure 1** CTRP3 in human breast milk (BM). (A) Immunoblot analysis of whole BM (lane 1), unbound protein solution samples (lanes 2–5) and immunoprecipitate samples (lanes 6–9). BM samples were immunoprecipitated with vehicle only (lanes 2 and 6), normal serum (lanes 3 and 7), anti-CTRP1 (lanes 4 and 8), or anti-CTRP3 antibody (lanes 5 and 9). (B) BM CTRP3 concentration in normal weight compared with obese mothers (\* $p < 0.05$  vs. normal weight group). Values are mean ± SEM, and dots, and triangles represent individual data points from individual participants.

Full-size DOI: 10.7717/peerj.4472/fig-1

obese  $564.3 \pm 107.3$  pg/mL,  $p < 0.01$ ). Further, leptin levels were ~5-times higher in BM from obese mothers than normal weight (normal weight  $193.8 \pm 41.5$  vs obese  $1,083 \pm 194.3$  pg/mL,  $p < 0.0001$ ).





**Figure 2** Humoral factors in breast milk (BM). The BM samples from 23 pregravid normal weight (BMI 18–25 kg/m<sup>2</sup>) and 14 obese (BMI > 30 kg/m<sup>2</sup>) mothers between 2 and 14 weeks of lactation were measured for (A) insulin, (B) glucose, (C) TNF- $\alpha$ , (D), IL-6, (E) ghrelin, (F) adiponectin, and (G) leptin (\* $p$  < 0.05 vs. normal weight group). Values are mean  $\pm$  SEM, and dots, and triangles represent individual data points from each participant. (H) Associations between BM and CTRP3 and leptin protein concentration. Solid line ( $p$  = 0.03,  $R^2$  = 0.35,  $n$  = 37). [Full-size !\[\]\(fcc3264021d438d9732560e78099f674\_img.jpg\) DOI: 10.7717/peerj.4472/fig-2](https://doi.org/10.7717/peerj.4472/fig-2)

**Table 2** Correlations of measured biological variables and CTRP3 concentration.

	$R^2$	$p$
Glucose (mg/dL)	0.106	0.53
Ghrelin (pg/mL)	0.102	0.55
Insulin (pg/mL)	0.057	0.74
Leptin (pg/mL)	0.352*	0.03
Adiponectin (ng/mL)	-0.017	0.92
IL-6 (pg/mL)	-0.089	0.60
TNF- $\alpha$ (pg/mL)	0.104	0.54
BMI (kg/m <sup>2</sup> )	0.284	0.09

**Notes:**

Correlations between measured variables and CTRP3 were analyzed by Spearman nonparametric correlation test.

\* Denotes significant association.

**Correlations of BM CTRP3 concentrations and biological variables**

In order to examine biological mechanisms for CTRP3, correlations of all measured variables were determined by Spearman rank correlation analysis (Table 2). BM CTRP3 concentration was positively correlated with leptin concentrations ( $p < 0.033$ ,  $R^2 = 0.352$ ,  $n = 37$ ). CTRP3 was not associated with BMI or any other measured bioactive factor in BM.

**DISCUSSION**

The major findings of this study are that the novel adipokine CTRP3 is not only present in BM but also CTRP3 is significantly elevated in the BM of obese mothers (BMI > 30 kg/m<sup>2</sup>). CTRP3 is an exciting member of the CTRP family, which has been shown to have anti-diabetic and anti-inflammatory properties (Lin *et al.*, 2017; Petersen *et al.*, 2016; Peterson, 2016; Peterson, Wei & Wong, 2010; Yoo *et al.*, 2013; Zhang *et al.*, 2017). This may be particularly physiologically relevant as infant intestinal tight junctions remain open during this early neonatal development (Shehadeh, Sukhotnik & Shamir, 2006) and leptin has been demonstrated to be absorbed through the intestinal barrier in neonatal rat pups (Sanchez *et al.*, 2005). Due to the anticipated protective properties of CTRP3, we initially anticipated that CTRP3 levels would be decreased in the BM from obese mothers. However, BM CTRP3 levels were elevated with obesity, which was contrary to our initial hypothesis. Nevertheless, this finding is in line with a recent paper showing that CTRP3 levels increase with obesity in females (Wagner *et al.*, 2016). CTRP3, combined with leptin and other bioactive components, may be acting to prevent the maternal transfer of obesity, through reducing food intake, stimulating metabolism, or a yet to be determined mechanism. On the other hand, elevated levels of CTRP3 may negatively influence infant development, as CTRP3's function during growth and development is unknown.

We found that CTRP3 levels are highly variable in both normal weight and obese mothers with concentrations of 2–80 ng/mL. This high variability in BM CTRP3 levels indicate that a number of factors beyond pregravid BMI contribute to CTRP3's regulation. In addition, leptin, which was positively correlated with CTRP3, is not only produced by adipose tissue, but also is expressed directly from the mammary gland

(*Smith-Kirwin et al., 1998*), indicating that the mammary gland may also express and regulate CTRP3 concentration in BM. However, as CTRP3 levels are up to 10 times higher in human circulation (200–1,000 ng/mL) (*Wagner et al., 2016*), CTRP3 may be absorbed from the circulation and not necessarily be actively synthesized by the mammary gland. Therefore, to determine the true source of BM CTRP3, future studies should examine mammary gland CTRP3 expression, the association of circulating and BM CTRP3 levels, and the transfer of a labeled recombinant CTRP3 from the circulating to the milk.

Further, findings from this study independently confirm previous work that BM from obese mothers has higher concentration of insulin and leptin, with no changes observed between the two populations in ghrelin, IL-6, TNF- $\alpha$ , or glucose levels (*Fields, Schneider & Pavela, 2016; Kuganathan et al., 2017; Lemas et al., 2016; Socha et al., 2016; Stern, Rutkowski & Scherer, 2016; Young et al., 2017*). Although some studies have reported an association between BMI and BM adiponectin levels, most studies do not find a relationship (*Andreas et al., 2014; Fields, Schneider & Pavela, 2016; Kuganathan et al., 2017; Ley et al., 2012*). The data from this study also found no correlation with maternal obesity and BM adiponectin levels.

Cross-sectional evidence suggests that neonatal development is a crucial time-period for preventing obesity and metabolic dysfunction throughout life (*Çatli, Olgaç DüNDAR & DüNDAR, 2014; Zalewski et al., 2017*). Further, experimental evidence in animal models (offspring of normal weight dams that were suckled by obese dams) demonstrated an exaggerated metabolic phenotype in adulthood (*Oben et al., 2010*). However, the mechanisms that are responsible for creating the predisposition to obesity have not been identified. BM is a complex solution that contains a number of bioactive factors that have the potential to significantly affect appetite, growth, development, and overall health (*Çatli, Olgaç DüNDAR & DüNDAR, 2014; Fields, Schneider & Pavela, 2016; Savino et al., 2002*). For example, circulating leptin levels are higher in breastfed compared to formula fed children (*Savino et al., 2002*) and studies indicate that leptin transfers from the milk to the infant's circulatory system (*Casabiell et al., 1997; Savino et al., 2002*). These data support the hypothesis that non-nutritive factors such as leptin have the potential to influence neonatal development.

## CONCLUSION

The results from this study support the hypothesis that maternal adiposity changes hormonal and immunological components of BM.

## Study limitations

The primary limitations of this study are that we were unable to examine the association of CTRP3 in the BM with circulatory levels in the mothers or the infants. These data would allow the investigators to determine if maternal circulating levels of the various factors would predict the concentration in the BM and more importantly, the amount and concentration of CTRP3 provided to the infants. Additionally, we were unable to examine relationships between CTRP3 levels in the BM and current maternal or infant anthropometric data or other markers of infant health. Future studies will need to

determine the role CTRP3 and other novel secreted humoral factors have on infant development. Further, due to the preliminary nature of this study, we only acquired a single BM sample from each mother, future studies will need to determine if BM CTRP3 levels change throughout the postnatal period. Lastly, the cross-sectional nature of this study precludes making causal claims.

## ADDITIONAL INFORMATION AND DECLARATIONS

### Funding

This research was supported by the National Institute on Alcohol Abuse and Alcoholism of the National Institutes of Health under Award Number R03AA023612, by the National Institutes of Health Award Number C06RR0306551, East Tennessee State University Research Development Committee (E82262), and East Tennessee State University's Colleges of Public Health and Clinical & Rehabilitative Health Sciences. There was no additional external funding received for this study. The funders had no role in study design, data collection and analysis, decision to publish, or preparation of the manuscript.

### Grant Disclosures

The following grant information was disclosed by the authors:

National Institute on Alcohol Abuse and Alcoholism of the National Institutes of Health: Award Number R03AA023612.

National Institutes of Health: Award Number C06RR0306551.

East Tennessee State University Research Development Committee: E82262.

East Tennessee State University's Colleges of Public Health and Clinical & Rehabilitative Health Sciences.

### Competing Interests

The authors declare that they have no competing interests.

### Author Contributions

- Megan R. Kwon conceived and designed the experiments, performed the experiments, authored or reviewed drafts of the paper, approved the final draft.
- Eileen Cress performed the experiments, authored or reviewed drafts of the paper, approved the final draft.
- W. Andrew Clark conceived and designed the experiments, analyzed the data, contributed reagents/materials/analysis tools, authored or reviewed drafts of the paper, approved the final draft.
- Arsham Alamian analyzed the data, contributed reagents/materials/analysis tools, authored or reviewed drafts of the paper, approved the final draft.
- Yongke Lu conceived and designed the experiments, contributed reagents/materials/analysis tools, authored or reviewed drafts of the paper, approved the final draft, provided equipment and training of equipment necessary for key assay.

- Jonathan M. Peterson conceived and designed the experiments, performed the experiments, analyzed the data, contributed reagents/materials/analysis tools, prepared figures and/or tables, authored or reviewed drafts of the paper, approved the final draft.

### Human Ethics

The following information was supplied relating to ethical approvals (i.e., approving body and any reference numbers):

All study procedures were approved by East Tennessee State University's Institutional Review Board (IRB No 0915.8s, 2016).

### Data Availability

The following information was supplied regarding data availability:

The raw data has been supplied as [Supplemental Dataset Files](#).

### Supplemental Information

Supplemental information for this article can be found online at <http://dx.doi.org/10.7717/peerj.4472#supplemental-information>.

## REFERENCES

- Andreas NJ, Hyde MJ, Gale C, Parkinson JR, Jeffries S, Holmes E, Modi N. 2014. Effect of maternal body mass index on hormones in breast milk: a systematic review. *PLOS ONE* 9(12):e115043 DOI 10.1371/journal.pone.0115043.
- Casabiell X, Piñeiro V, Tomé MA, Peino R, Dieguez C, Casanueva FF. 1997. Presence of leptin in colostrum and/or breast milk from lactating mothers: a potential role in the regulation of neonatal food intake. *Journal of Clinical Endocrinology & Metabolism* 82(12):4270–4273 DOI 10.1210/jcem.82.12.4590.
- Çatli G, Olgaç DüNDAR N, DüNDAR BN. 2014. Adipokines in breast milk: an update. *Journal of Clinical Research in Pediatric Endocrinology* 6(4):192–201 DOI 10.4274/Jcrpe.1531.
- Chan D, Goruk S, Becker AB, Subbarao P, Mandhane PJ, Turvey SE, Lefebvre D, Sears MR, Field CJ, Azad MB. 2017. Adiponectin, leptin and insulin in breast milk: associations with maternal characteristics and infant body composition in the first year of life. *International Journal of Obesity* 42(1):36–43 DOI 10.1038/ijo.2017.189.
- Del Prado M, Delgado G, Villalpando S. 1997. Maternal lipid intake during pregnancy and lactation alters milk composition and production and litter growth in rats. *Journal of Nutrition* 127(3):458–462.
- Ekelund U, Anderssen S, Andersen LB, Riddoch CJ, Sardinha LB, Luan J, Froberg K, Brage S. 2009. Prevalence and correlates of the metabolic syndrome in a population-based sample of European youth. *American Journal of Clinical Nutrition* 89(1):90–96 DOI 10.3945/ajcn.2008.26649.
- Fields DA, Demerath EW. 2012. Relationship of insulin, glucose, leptin, IL-6 and TNF-alpha in human breast milk with infant growth and body composition. *Pediatric Obesity* 7(4):304–312 DOI 10.1111/j.2047-6310.2012.00059.x.
- Fields DA, Schneider CR, Pavela G. 2016. A narrative review of the associations between six bioactive components in breast milk and infant adiposity. *Obesity* 24(6):1213–1221 DOI 10.1002/oby.21519.

- Friend A, Craig L, Turner S. 2013. The prevalence of metabolic syndrome in children: a systematic review of the literature. *Metabolic Syndrome and Related Disorders* 11(2):71–80 DOI 10.1089/met.2012.0122.
- Garcia-Mantrana I, Collado MC. 2016. Obesity and overweight: impact on maternal and milk microbiome and their role for infant health and nutrition. *Molecular Nutrition & Food Research* 60(8):1865–1875 DOI 10.1002/mnfr.201501018.
- Gillman MW. 2002. Breast-feeding and obesity. *Journal of Pediatrics* 141(6):749–750 DOI 10.1067/mpd.2002.130168.
- Global BMI Mortality Collaboration, Di Angelantonio E, Bhupathiraju Sh N, Wormser D, Gao P, Kaptoge S, Berrington de Gonzalez A, Cairns BJ, Huxley R, Jackson Ch L, Joshy G, Lewington S, Manson JE, Murphy N, Patel AV, Samet JM, Woodward M, Zheng W, Zhou M, Bansal N, Barricarte A, Carter B, Cerhan JR, Smith GD, Fang X, Franco OH, Green J, Halsey J, Hildebrand JS, Jung KJ, Korda RJ, McLerran DE, Moore SC, O’Keeffe LM, Paige E, Ramond A, Reeves GK, Rolland B, Sacerdote C, Sattar N, Sofianopoulou E, Stevens J, Thun M, Ueshima H, Yang L, Yun YD, Willeit P, Banks E, Beral V, Chen Z, Gapstur SM, Gunter MJ, Hartge P, Jee SH, Lam TH, Peto R, Potter JD, Willett WC, Thompson SG, Danesh J, Hu FB. 2016. Body-mass index and all-cause mortality: individual-participant-data meta-analysis of 239 prospective studies in four continents. *Lancet* 388(10046):776–786 DOI 10.1016/S0140-6736(16)30175-1.
- Harder T, Bergmann R, Kallischnigg G, Plogemann A. 2005. Duration of breastfeeding and risk of overweight: a meta-analysis. *American Journal of Epidemiology* 162(5):397–403 DOI 10.1093/aje/kwi222.
- Horta BL, Loret de Mola C, Victora CG. 2015. Long-term consequences of breastfeeding on cholesterol, obesity, systolic blood pressure and type 2 diabetes: a systematic review and meta-analysis. *Acta Paediatrica* 104:30–37 DOI 10.1111/apa.13133.
- Kalliomaki M, Collado MC, Salminen S, Isolauri E. 2008. Early differences in fecal microbiota composition in children may predict overweight. *American Journal of Clinical Nutrition* 87(3):534–538 DOI 10.1093/ajcn/87.3.534.
- Khodabakhshi A, Mehrad-Majd H, Vahid F, Safarian M. 2017. Association of maternal breast milk and serum levels of macronutrients, hormones, and maternal body composition with infant’s body weight. *European Journal of Clinical Nutrition* DOI 10.1038/s41430-017-0022-9.
- Kuganathan S, Gridneva Z, Lai CT, Hepworth AR, Mark PJ, Kakulas F, Geddes DT. 2017. Associations between maternal body composition and appetite hormones and macronutrients in human milk. *Nutrients* 9(12):252 DOI 10.3390/nu9030252.
- Lemas DJ, Young BE, Baker PR 2nd, Tomczik AC, Soderborg TK, Hernandez TL, de la Houssaye BA, Robertson CE, Rudolph MC, Ir D, Patinkin ZW, Krebs NF, Santorico SA, Weir T, Barbour LA, Frank DN, Friedman JE. 2016. Alterations in human milk leptin and insulin are associated with early changes in the infant intestinal microbiome. *American Journal of Clinical Nutrition* 103(5):1291–1300 DOI 10.3945/ajcn.115.126375.
- Ley SH, Hanley AJ, Sermer M, Zinman B, O’Connor DL. 2012. Associations of prenatal metabolic abnormalities with insulin and adiponectin concentrations in human milk. *American Journal of Clinical Nutrition* 95(4):867–874 DOI 10.3945/ajcn.111.028431.
- Li Y, Ozment T, Wright GL, Peterson JM. 2016. Identification of putative receptors for the novel adipokine CTRP3 using ligand–receptor capture technology. *PLOS ONE* 11(10):e0164593 DOI 10.1371/journal.pone.0164593.
- Lin J, Liu Q, Zhang H, Huang X, Zhang R, Chen S, Wang X, Yu B, Hou J. 2017. C1q/tumor necrosis factor-related protein-3 protects macrophages against LPS-induced lipid



- accumulation, inflammation and phenotype transition via PPARgamma and TLR4-mediated pathways. *Oncotarget* **8**(47):82541–82557 DOI [10.18632/oncotarget.19657](https://doi.org/10.18632/oncotarget.19657).
- Mackay H, Khazall R, Patterson ZR, Wellman M, Abizaid A. 2013.** Rats perinatally exposed to food restriction and high-fat diet show differences in adipose tissue gene expression under chronic caloric restriction. *Adipocyte* **2**(4):237–245 DOI [10.4161/adip.24752](https://doi.org/10.4161/adip.24752).
- Maligie M, Crume T, Scherzinger A, Stamm E, Dabelea D. 2012.** Adiposity, fat patterning, and the metabolic syndrome among diverse youth: the EPOCH study. *Journal of Pediatrics* **161**(5):875–880 DOI [10.1016/j.jpeds.2012.05.003](https://doi.org/10.1016/j.jpeds.2012.05.003).
- Matsuno AY, Esrey KL, Perrault H, Koski KG. 1999.** Low intensity exercise and varying proportions of dietary glucose and fat modify milk and mammary gland compositions and pup growth. *Journal of Nutrition* **129**:1167–1175.
- National Center for Health Statistics (U.S.). 2015.** *Health, United States, 2015: With Special Feature on Racial and Ethnic Health Disparities*. Washington, D.C.: U.S. Department of Health, Education, and Welfare, Public Health Service, Health Resources Administration; Congress Catalog Number 76-641496.
- Oben JA, Muralidarane A, Samuelsson AM, Matthews PJ, Morgan ML, McKee C, Soeda J, Fernandez-Twinn DS, Martin-Gronert MS, Ozanne SE, Sigala B, Novelli M, Poston L, Taylor PD. 2010.** Maternal obesity during pregnancy and lactation programs the development of offspring non-alcoholic fatty liver disease in mice. *Journal of Hepatology* **52**(6):913–920 DOI [10.1016/j.jhep.2009.12.042](https://doi.org/10.1016/j.jhep.2009.12.042).
- Ogden CL, Carroll MD, Kit BK, Flegal KM. 2014.** Prevalence of childhood and adult obesity in the United States, 2011–2012. *JAMA* **311**(8):806–814 DOI [10.1001/jama.2014.732](https://doi.org/10.1001/jama.2014.732).
- Oosting A, Verkade HJ, Kegler D, van de Heijning BJ, van der Beek EM. 2015.** Rapid and selective manipulation of milk fatty acid composition in mice through the maternal diet during lactation. *Journal of Nutritional Science* **4**:e19 DOI [10.1017/jns.2015.13](https://doi.org/10.1017/jns.2015.13).
- Palou M, Priego T, Sanchez J, Torrens JM, Palou A, Pico C. 2010.** Moderate caloric restriction in lactating rats protects offspring against obesity and insulin resistance in later life. *Endocrinology* **151**(3):1030–1041 DOI [10.1210/en.2009-0934](https://doi.org/10.1210/en.2009-0934).
- Pardo M, Roca-Rivada A, Seoane LM, Casanueva FF. 2012.** Obesidomics: contribution of adipose tissue secretome analysis to obesity research. *Endocrine* **41**(3):374–383 DOI [10.1007/s12020-012-9617-z](https://doi.org/10.1007/s12020-012-9617-z).
- Petersen PS, Wolf RM, Lei X, Peterson JM, Wong GW. 2016.** Immunomodulatory roles of CTRP3 in endotoxemia and metabolic stress. *Physiological Reports* **4**(5):e12735 DOI [10.14814/phy2.12735](https://doi.org/10.14814/phy2.12735).
- Peterson JM. 2016.** Identification of cell surface receptors for the novel adipokine CTRP3. *FASEB Journal* **30**(1):1249.2.
- Peterson JM, Aja S, Wei Z, Wong GW. 2012.** CTRP1 protein enhances fatty acid oxidation via AMP-activated protein kinase (AMPK) activation and acetyl-CoA carboxylase (ACC) inhibition. *Journal of Biological Chemistry* **287**(2):1576–1587 DOI [10.1074/jbc.M111.278333](https://doi.org/10.1074/jbc.M111.278333).
- Peterson JM, Seldin MM, Wei Z, Aja S, Wong GW. 2013.** CTRP3 attenuates diet-induced hepatic steatosis by regulating triglyceride metabolism. *American Journal of Physiology-Gastrointestinal and Liver Physiology* **305**(3):G214–G224 DOI [10.1152/ajpgi.00102.2013](https://doi.org/10.1152/ajpgi.00102.2013).
- Peterson JM, Wei Z, Wong GW. 2010.** C1q/TNF-related protein-3 (CTRP3), a novel adipokine that regulates hepatic glucose output. *Journal of Biological Chemistry* **285**(51):39691–39701 DOI [10.1074/jbc.M110.180695](https://doi.org/10.1074/jbc.M110.180695).
- Rutkowski JM, Stern JH, Scherer PE. 2015.** The cell biology of fat expansion. *Journal of Cell Biology* **208**(5):501–512 DOI [10.1083/jcb.201409063](https://doi.org/10.1083/jcb.201409063).



- Sanchez J, Oliver P, Miralles O, Ceresi E, Pico C, Palou A. 2005. Leptin orally supplied to neonate rats is directly uptaken by the immature stomach and may regulate short-term feeding. *Endocrinology* **146**(6):2575–2582 DOI [10.1210/en.2005-0112](https://doi.org/10.1210/en.2005-0112).
- Savino F, Costamagna M, Prino A, Oggero R, Silvestro L. 2002. Leptin levels in breast-fed and formula-fed infants. *Acta Paediatrica* **91**(9):897–902 DOI [10.1111/j.1651-2227.2002.tb02874.x](https://doi.org/10.1111/j.1651-2227.2002.tb02874.x).
- Shehadeh N, Sukhotnik I, Shamir R. 2006. Gastrointestinal tract as a target organ for orally administered insulin. *Journal of Pediatric Gastroenterology and Nutrition* **43**(3):276–281 DOI [10.1097/01.mpg.0000226377.03247.fb](https://doi.org/10.1097/01.mpg.0000226377.03247.fb).
- Shin D, Chung H, Weatherspoon L, Song WO. 2014. Validity of prepregnancy weight status estimated from self-reported height and weight. *Maternal and Child Health Journal* **18**(7):1667–1674 DOI [10.1007/s10995-013-1407-6](https://doi.org/10.1007/s10995-013-1407-6).
- Smith-Kirwin SM, O'Connor DM, De Johnston J, Lancey ED, Hassink SG, Funanage VL. 1998. Leptin expression in human mammary epithelial cells and breast milk. *Journal of Clinical Endocrinology & Metabolism* **83**(5):1810–1813 DOI [10.1210/jcem.83.5.4952](https://doi.org/10.1210/jcem.83.5.4952).
- Socha P, Hellmuth C, Gruszfeld D, Demmelmair H, Rzehak P, Grote V, Weber M, Escribano J, Closa-Monasterolo R, Dain E, Langhendries JP, Riva E, Verduci E, Koletzko B, European Childhood Obesity Trial Study Group. 2016. Endocrine and metabolic biomarkers predicting early childhood obesity risk. *Nestlé Nutrition Institute Workshop Series* **85**:81–88 DOI [10.1159/000439489](https://doi.org/10.1159/000439489).
- Stern JH, Rutkowski JM, Scherer PE. 2016. Adiponectin, leptin, and fatty acids in the maintenance of metabolic homeostasis through adipose tissue crosstalk. *Cell Metabolism* **23**(5):770–784 DOI [10.1016/j.cmet.2016.04.011](https://doi.org/10.1016/j.cmet.2016.04.011).
- Sun B, Purcell RH, Terrillion CE, Yan J, Moran TH, Tamashiro KL. 2012. Maternal high-fat diet during gestation or suckling differentially affects offspring leptin sensitivity and obesity. *Diabetes* **61**(11):2833–2841 DOI [10.2337/db11-0957](https://doi.org/10.2337/db11-0957).
- Taveras EM, Rifas-Shiman SL, Sherry B, Oken E, Haines J, Kleinman K, Rich-Edwards JW, Gillman MW. 2011. Crossing growth percentiles in infancy and risk of obesity in childhood. *Archives of Pediatrics & Adolescent Medicine* **165**(11):993–998 DOI [10.1001/archpediatrics.2011.167](https://doi.org/10.1001/archpediatrics.2011.167).
- Toschke AM, Vignerova J, Lhotska L, Osancova K, Koletzko B, Von Kries R. 2002. Overweight and obesity in 6- to 14-year-old Czech children in 1991: protective effect of breast-feeding. *Journal of Pediatrics* **141**(6):764–769 DOI [10.1067/mpd.2002.128890](https://doi.org/10.1067/mpd.2002.128890).
- Troiano RP, Flegal KM. 1998. Overweight children and adolescents: description, epidemiology, and demographics. *Pediatrics* **101**:497–504.
- Tsudoku T, Kitano Y, Honma T, Kijima R, Ikeda I. 2013. High dietary fat intake during lactation promotes development of diet-induced obesity in male offspring of mice. *Journal of Nutritional Science and Vitaminology* **59**(5):384–392 DOI [10.3177/jnsv.59.384](https://doi.org/10.3177/jnsv.59.384).
- Wagner RM, Sivagnanam K, Clark WA, Peterson JM. 2016. Divergent relationship of circulating CTRP3 levels between obesity and gender: a cross-sectional study. *PeerJ* **4**:e2573 DOI [10.7717/peerj.2573](https://doi.org/10.7717/peerj.2573).
- Wong GW, Krawczyk SA, Kitidis-Mitrokostas C, Revett T, Gimeno R, Lodish HF. 2008. Molecular, biochemical and functional characterizations of C1q/TNF family members: adipose-tissue-selective expression patterns, regulation by PPAR-gamma agonist, cysteine-mediated oligomerizations, combinatorial associations and metabolic functions. *Biochemical Journal* **416**(2):161–177 DOI [10.1042/BJ20081240](https://doi.org/10.1042/BJ20081240).

- Wong GW, Wang J, Hug C, Tsao TS, Lodish HF. 2004.** A family of Acrp30/adiponectin structural and functional paralogs. *Proceedings of the National Academy of Sciences of the United States of America* **101(28)**:10302–10307 DOI [10.1073/pnas.0403760101](https://doi.org/10.1073/pnas.0403760101).
- Woo JG, Martin LJ. 2015.** Does breastfeeding protect against childhood obesity? Moving beyond observational evidence. *Current Obesity Reports* **4(2)**:207–216 DOI [10.1007/s13679-015-0148-9](https://doi.org/10.1007/s13679-015-0148-9).
- Yan J, Liu L, Zhu Y, Huang G, Wang PP. 2014.** The association between breastfeeding and childhood obesity: a meta-analysis. *BMC Public Health* **14(1)**:1267 DOI [10.1186/1471-2458-14-1267](https://doi.org/10.1186/1471-2458-14-1267).
- Yoo HJ, Hwang SY, Hong HC, Choi HY, Yang SJ, Choi DS, Baik SH, Bluher M, Youn BS, Choi KM. 2013.** Implication of progranulin and C1q/TNF-related protein-3 (CTRP3) on inflammation and atherosclerosis in subjects with or without metabolic syndrome. *PLOS ONE* **8(2)**:e55744 DOI [10.1371/journal.pone.0055744](https://doi.org/10.1371/journal.pone.0055744).
- Young BE, Patinkin Z, Palmer C, de la Houssaye B, Barbour LA, Hernandez T, Friedman JE, Krebs NF. 2017.** Human milk insulin is related to maternal plasma insulin and BMI: but other components of human milk do not differ by BMI. *European Journal of Clinical Nutrition* **71(9)**:1094–1100 DOI [10.1038/ejcn.2017.75](https://doi.org/10.1038/ejcn.2017.75).
- Zalewski BM, Patro B, Veldhorst M, Kouwenhoven S, Crespo Escobar P, Calvo Lerma J, Koletzko B, van Goudoever JB, Szajewska H. 2017.** Nutrition of infants and young children (one to three years) and its effect on later health: a systematic review of current recommendations (EarlyNutrition project). *Critical Reviews in Food Science and Nutrition* **57(3)**:489–500 DOI [10.1080/10408398.2014.888701](https://doi.org/10.1080/10408398.2014.888701).
- Zhang J, Zhang B, Cheng Y, Xu J. 2017.** Low serum CTRP3 levels are associated with nonalcoholic fatty liver disease in patients with type 2 diabetes mellitus. *Cytokine* DOI [10.1016/j.cyto.2017.10.023](https://doi.org/10.1016/j.cyto.2017.10.023) [Epub ahead of print 4 November 2017].