

# MPRA

Munich Personal RePEc Archive

## **Financial Development and Pre-historic Geographical Isolation: Global Evidence**

Oasis Kodila-Tedika and Simplicie Asongu and Matthias  
Cinyabuguma and Vanessa Tchamyou

2 January 2017

Online at <https://mpa.ub.uni-muenchen.de/84039/>

MPRA Paper No. 84039, posted 22 January 2018 20:42 UTC

# A G D I Working Paper

WP/17/041

## **Financial Development and Pre-historic Geographical Isolation: Global Evidence**

Forthcoming: Financial History Review

**Oasis Kodila-Tedika<sup>1</sup>, Simplicé A. Asongu<sup>2,3,4\*</sup>, Matthias Cinyabuguma<sup>5</sup> & Vanessa S. Tchamyou<sup>2,6</sup>**

<sup>1</sup>Department of Economics, University of Kinshasa,  
Democratic Republic of Congo  
E-mail: [oasiskodila@yahoo.fr](mailto:oasiskodila@yahoo.fr)

<sup>2\*</sup> African Governance and Development Institute,  
P.O. Box 8413, Yaoundé, Cameroon  
E-mails: [asongusimplice@yahoo.com](mailto:asongusimplice@yahoo.com)  
[asongus@afridev.org](mailto:asongus@afridev.org)

<sup>3</sup>Department of Economics & Development Studies,  
Covenant University, Ota, Ogun State, Nigeria

<sup>4</sup>Development Finance Centre, Graduate School of Business,  
University of Cape Town, Cape Town, South Africa

<sup>5</sup>The World Bank Group, Washington D.C.  
E-mail: [mcinyabuguma@worldbank.org](mailto:mcinyabuguma@worldbank.org)

<sup>6</sup> Faculty of Applied Economics,  
University of Antwerp, Antwerp, Belgium.  
E-mail: [simenvanessa@yahoo.com](mailto:simenvanessa@yahoo.com)

Research Department

## **Financial Development and Pre-historic Geographical Isolation: Global Evidence**

**Oasis Kodila-Tedika, Simplicie A. Asongu, Matthias Cinyabuguma and Vanessa S. Tchamyou**

January 2017

### **Abstract**

Using cross-country differences in the degree of isolation before the advent of technologies in sea and air transportation, we assess the relationship between geographic isolation and financial development across the globe. We find that pre-historic geographical isolation has been beneficial to development because it has contributed to contemporary cross-country differences in financial intermediary development. The relationship is robust to alternative samples, different estimation techniques, outliers and varying conditioning information sets.

The established positive relationship between geographic isolation and financial intermediary development does not significantly extend to stock market development.

*JEL:* F15; G15; N7; O16; O50

*Keywords:* Financial development; Isolation; Agglomeration; Globalization

### **Acknowledgement**

We thank James B. Ang who supplied us the main part of data used in this research.

## **Introduction**

Is geographical isolation related to development outcomes such as financial development? To the best of our knowledge, the answer to this question is missing in empirical literature. Various aspects of financial development to explain its relative presence or absence have been explored over the past decades, notably: theories related to credit information and power (Stieglitz & Weiss, 1981; Aghion & Bolton, 1992; Djankov et al., 2007; Tchamyou & Asongu, 2017); theory of law and finance (La Porta et al., 1997; Beck et al., 2003); culture (Stulz & Williamson, 2003; Kodila-Tedika & Asongu, 2015a); abuse of market power and competition in the banking sector (Coccoresse & Pellicchia, 2010; Coccoresse, 2012); globalisation (Asongu, 2014; Asongu & De Moor, 2017); remittances (Osabuohien & Efobi, 2013; Efobi et al., 2015); endowment theory (Beck et al., 2003); the role of the state (Rajan & Zingales, 2003; Becerra et al., 2012; Ang, 2013a); genetic distance (Ang & Kumar, 2014); macro-finance (Rajan & Zingales, 1998; Baltagi et al., 2009); social capital (Guiso et al., 2004) and human capital (Kodila-Tedika & Asongu, 2015b).

The study closest to the present inquiry is Ashraf et al. (2010) which has examined how cross-country differences in the degree of pre-historic geographic isolation affect the contemporary development process with respect to income per capita. The authors have also been motivated by the absence of studies that examine the relationship between pre-historic isolation and contemporary development outcomes. Existing studies on comparative development have emphasised a plethora of ultimate and proximate characteristics underpinning some of the substantial disparities in standards of living across the globe. The relevance of cultural, institutional, geographic, religious fractionalisation, as well as linguistic, ethnic, globalisation and colonisation features, have motivated the debate on the timing of differential economic growth from stagnation to modern growth over the past 200 years. According to Ashraf et al. (2010), whereas the underlying factors have been

investigated from the perspective of contemporary effects, less attention has been paid to pre-historic characteristics that have affected contemporary development and cross-country differences in economic growth.

The motivation for assessing the nexus between geographic isolation and economic development builds on the intuition that globalisation has been documented to affect the development process, through *inter alia*: trade (Musila & Sigué, 2010); capital flows (Price & Elu, 2014; Motelle & Biekpe, 2015); foreign aid (Kayizzi-Mugerwa, 2001; Obeng-Odoom, 2013) and technological diffusion (Tchamyu, 2016). According to Ashraf et al. (2010), the reduced ability of societies that are geographically isolated to gain from progress in global technological frontiers could have compelled independent advancements in technological progress, therefore inducing a fundamental cultural setting that is favourable to innovation and development. Furthermore, geographically isolated societies might have benefited from the diminished threat of predation which logically fostered efficient allocation of resources towards development outcomes and protected property rights, ultimately contributing to the setting of fundamental cultural values that are beneficial to economic development.

In the light of the fact that geographical isolation promoted a fundamental and persistent cultural environment that enhanced development, it is plausible to infer that pre-historic geographical isolation has played a significant role in the development process, hence, influencing contemporary development across the world.

This study exploits pre-historic cross-country geographical isolation differences in order to assess its effect on financial development across the globe. Ashraf et al. (2010) consider pre-historic geographical isolation prior to the advent of airborne and sea-faring technologies of transportation as ultimate proximate underlying some of the cross country differences in living standards across the globe. We find that pre-historic geographical isolation has had a significant positive relationship with the process of development because it

has contributed to contemporary cross-country differences in financial development. The relationship is robust to alternative samples, different estimation techniques, outliers and varying conditioning information sets. The relationship between isolation on financial development is depicted in Figure 1.

The rest of the study is structured as follows. Section I discusses the theoretical underpinnings on the relationship between openness and development. The data and methodology are outlined in Section II. Section III presents empirical results while Section IV covers robustness assessments. Concluding implications and future research directions are provided in Section V.

## **I. Theoretical underpinnings and the relationship between openness and development**

There are two principal theoretical bases for the relationship between openness and development, notably: the neoliberal view and the hegemony perspective (see Tsai, 2006; Asongu, 2013). First, the neoliberal strand of openness argues that openness is an instrument of ‘creative destruction’ in the perspective that, technological innovation, global trade and cross-border investment enhance efficiency in production and engender substantial progress in spite of job substitution and falling wages for workers that are unskilled. According to the narrative, the drawbacks of openness are assuaged by requesting workers that are unskilled to improve on their know-how in order to gain from the positive externalities of increasing openness. According to Grennes (2003) such benefits can be rewarding to the population if the labour market is influenced by ‘supply and demand’.

Second, with regard to the hegemonic strand, policies favouring global openness are hidden projects that are designed to create a new world order which will be under the control of global financial institutions and developed countries. This school of thought maintains that openness encourages the accumulation of capital, growing inequality and extension of

rewards of trade in goods and services to trade in financial assets. Proponents of this stream predict ‘a *world-wide crisis of living standards for labor*’, granting that the capital accumulation process has been borne by the working class because ‘*technological change and economic reconversion endemic to capitalist development has generated an enormous growing pool of surplus labor, an industrial reserve army with incomes at or below the level of subsistence*’ (Petras & Veltmeyer, 2001, p. 24).

Another dimension of the hegemonic view maintains that production modes of neoliberal policies are connected to a process of dynamic production which undermines redistribution channels that are consistent with Keynesian Social democracy. According to some narratives in this strand, global openness favours the quest for private gains to the detriment of more ethical values like inclusive development (Smar, 2003) and environmental protection (Obeng-Odoom, 2015). Furthermore, the redistribution process of benefits from openness is skewed in favour of the faction of the population that is already in privileged socio-economic positions (Scholte, 2000). Though from a less radical perspective, Scholte’s position is shared by Sirgy et al. (2004).

In accordance with recent literature (Asongu & De Moor, 2017), the decision on whether a country should adopt openness policies in view of stimulating domestic financial development remains open to debate in the literature. Asongu (2014) provides two perspectives on the importance of openness in financial development.

The first perspective on allocation efficiency which is based on theoretical underpinnings of the neoclassical growth model from Solow (1956) is of the view that openness eases the efficient allocation of resources at the international level. The view maintains that capital resources (which in part simulate financial development) will flow from countries in which capital is abundant to countries in which capital is scarce. In capital-scarce countries, positive rewards include externalities that are essential to raise standards of living,

among others: increased investment, reduced capital cost and growth that is pro-poor (see Fischer, 1998; Obstfeld, 1998; Rogoff, 1999; Summers, 2000; Batuo & Asongu, 2015). Over the past decades, many countries have justified the need for more openness with such potential rewards.

Conversely, another stand of the literature maintains that the arguments of allocation efficiency in resources are a fanciful attempt to extend gains from international trade in commodities to international trade in assets. With regard to this sceptical strand, the rewards of allocation efficiency are feasible if and only if the transfer of international resources is not characterised by volatilities. Hence, as argued in recent literature (Rodrik, 1998; Rodrik & Subramanian, 2009; Batuo & Asongu, 2015) in the light of volatilities that have been experienced by some countries, the theoretical foundations of allocation efficiency may not reflect practical reality. In this light, the pessimistic opinions are best articulated by Rodrik (1998) and Rodrik and Subramanian (2009) with respective titles like ‘Who Needs Capital-Account Convertibility?’ and ‘Why Did Financial Globalization Disappoint?’ For instance, Rodrik (1998) maintains that there is no nexus between openness and the level of ‘growth and investment’ in developing nations. He articulates that whereas it is difficult to establish the benefits of capital account openness, the cost of financial openness are growingly apparent through financial crises that are increasing in terms of frequency and magnitude. Rodrik and Subramanian (2009) have established that, the sub-prime mortgage crisis which resulted in the global financial crisis has raised doubts about the net development benefits of growing financial openness.

Dornbusch (1996) considered capital controls as “*an idea who’s time had past*” and reaffirmed his position two years later that “*the correct answer to the question of capital mobility is that it ought to be unrestricted*” (Dornbusch, 1998, p. 20) while Fischer (1997) recommended orderly openness. The perspective of Fischer (1997) is shared by Henry (2007)



and Kose et al. (2011), with the latter perspective building on Kose et al. (2006) who have surveyed the literature and concluded that the indirect benefits are more relevant than traditional financial mechanisms articulated in previous studies. This has led to a recent stream of scholarly debates on China being *de jure* closed and *de facto* open (Prasad & Wei, 2007; Aizenman & Glick, 2009; Shah & Patnaik, 2009)<sup>1</sup>. Moreover, according to recent literature, the gains in financial openness are increasingly blur because financial openness is associated with, *inter alia*: growing external debt that is fuelling inequality (Azzimonti et al., 2014) and worsening business cycles (Leung, 2003) on the one hand and decreasing productivity and efficiency on the other hand (Mulwa et al., 2009).

The positioning of this inquiry steers clear of the above in the perspective that it assesses the role of geographical isolation in financial development. In other words, we examine if pre-historic geographical isolation has been beneficial to financial development.

## **II. Data and methodology**

We examine a sample of 66 countries with average contemporary data for the period 2000-2010 and prehistoric data on geographical isolation. The financial development dependent variable is private domestic credit as a percentage of GDP.

---

<sup>1</sup>The *de facto* and *de jure* measures of financial globalisation are foreign direct investment and KAOPEN (from Chinn and Ito, 2002) respectively.

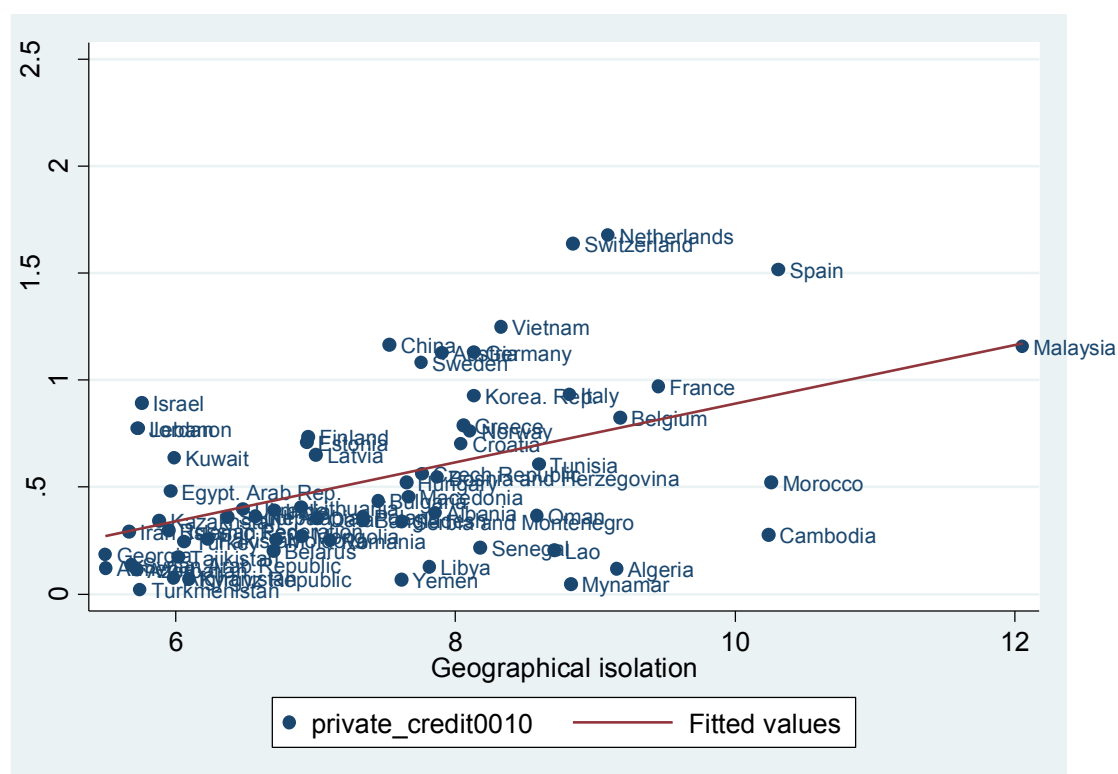


Figure 1: Geographic Isolation and Financial development (2000-2010).<sup>2</sup>

The independent variable of interest is the index of isolation from Ashraf et al. (2010). According to the authors, this is a new indicator of geographical isolation that was prevalent in the distant past and it represents the average time needed to travel from a country's capital to each kilometer square of land on earth, accounting for routes that can minimize the time to travel in the absence of airborne and maritime transportation technologies. The isolation index developed by the authors enables the exploitation of exogenous variation in extent of isolation, before the advent of underlying transportation technologies.

In the light of the above, for any given country, the isolation index represents the unweighted mean of the time that is needed to reach the capital of a country along paths that are cost minimizing. While employing an alternative index of isolation that is limited to the average time needed to travel from the capital of one country to the capital of another does not

<sup>2</sup>Figure 1 illustrates the partial regression line for the effect of Geographic Isolation on Financial development while controlling for other variables.

generally change the main empirical results from a qualitative standpoint, the adopted index is better because it accounts for the potential endogeneity that arises when the locational choice associated with the development of major urban centers was unparallel to main cities' spatial distribution. Hence, the isolation index employed within the framework of this study enables the exploitation of exogenous differences in the level of isolation before the advent of airborne transportation and sea-faring. This articulation is meant to identify the effect of geographical isolation in the prehistoric era on the path of economic development via history (Ashraf et al., 2010).

Following Ang and Kumar (2014) and Kodila-Tedika and Asongu (2015b) in recent financial development literature, we control for: aerial isolation, financial openness, trade openness, interaction between financial openness and trade openness, creditors' rights, religions (Protestants, Muslims and Catholics), legal origins (French, British, Scandinavian and German), tropics and latitude. The definitions of the variables, summary statistics and correlation matrix are provided in the Appendix. We discuss the expected signs concurrently with the estimation of results.

Consistent with the above and the geographical isolation (Ashraf et al., 2010) literature, we employ Ordinary Least Squares (OLS) in order to assess the nexus between geographical isolation and financial development. The specification is presented in Eq. (1).

$$FD_i = \alpha_1 + \alpha_2 GI_i + \alpha_3 X_i + \varepsilon_i \quad (1)$$

Where:  $FD_i$  ( $GI_i$ ) represents financial development (geographical isolation) indicator for country  $i$ ,  $\alpha_1$  is a constant,  $X$  is the vector of control variables, and  $\varepsilon$  the error term.  $X$  consists of: aerial isolation, trade openness, creditors' rights protection, financial openness, legal origins, tropics and latitude.

### III. Empirical results

Table 1 presents findings based on regressions in Eq. (1). The first column which shows univariate regressions establishes a positive correlation between historical geographic isolation and financial development; that is, a one standard deviation increase in the average time required to walk to a country's capital from all locations in the Old World is associated with 0.48 percentage points increase in financial development and significant at 1 percent. In fact, this indicates that isolation is positively correlated with private sector credit. Columns 2 to 8 examine the nexus conditional on other covariates (control variables). The ordering of the specification is in line with recent financial development literature (Ang & Kumar, 2014; Kodila-Tedika & Asongu, 2015). The positive magnitude varies between 0.086 (Column 7) and 0.159 (Column 3). The coefficient varies from 22.7% in univariate regressions (Column 2) to 66.2% (Columns 7 & 8). This consistent increasing magnitude in the adjustment coefficient is in line with the intuition because the explanatory power of a model should increase with improvements in the conditioning information set.

Most of the significant control variables have the expected signs. These include: (1) the protection of creditor rights has been documented to be linked to higher levels of financial development (La Porta et al., 1998); (2) given that financial openness is connected with availability of more external flows, it should also be linked with more possibilities for private domestic credit; (3) countries with French legal traditions are associated with less financial development (La Porta et al., 2008; Asongu, 2012ab); and, (4) compared to Muslim and Catholic nations, countries which are dominated by 'Protestants' are more likely to enjoy higher levels of financial development. The edge of the Protestant culture typically builds on the Weber's (1930) 'Protestant Ethic Thesis'. According to Weber, the Northern region of Europe experienced more advanced capitalism because a substantial part of the population

was motivated by the Protestant ethic to set-up its own enterprises.<sup>3</sup> It is in this light that the region adopted a culture of: (i) engaging in trade and investment activities for the accumulation of wealth and (ii) working in a secular world. The ‘Protestant Ethic Thesis’ also elicits the negative nexus between the dependent variable and the ‘Muslim dummy’. This is in accordance with the evidence that Muslim nations are less democratic (Fish, 2002, p. 4).

**Table 1: OLS for the relationship between isolation and financial development**

	Dependent variable: Private Credit/GDP (2000-2010)							
	I	II	III	IV	V	VI	VII	VIII
Geographical isolation	0.137*** (0.035)	0.141*** (0.035)	0.159*** (0.035)	0.117*** (0.032)	0.123*** (0.033)	0.137*** (0.038)	0.086*** (0.038)	0.137*** (0.035)
Aerial isolation		-0.017 (0.038)	-0.021 (0.037)	0.015 (0.037)	0.015 (0.038)	0.033 (0.042)	0.056 (0.037)	0.213 (0.037)
Creditor Rights			0.111** (0.045)	0.115*** (0.036)	0.098** (0.037)	0.088** (0.035)	0.072** (0.035)	0.176** (0.035)
Trade Openness(O)				0.050 (0.146)	-0.059 (0.145)	-0.056 (0.145)	-0.063 (0.133)	-0.063 (0.133)
Financial Openness(O)				0.198*** (0.073)	0.154* (0.084)	0.166** (0.082)	0.105 (0.073)	0.412 (0.073)
Trade O*Financial O				-0.070 (0.079)	-0.032 (0.089)	-0.049 (0.087)	-0.027 (0.077)	-0.121 (0.077)
BritishLegalOrigin					-0.109 (0.156)	0.101 (0.223)	0.384 (0.318)	0.305 (0.318)
French LegalOrigin					-0.219* (0.120)	-0.075 (0.134)	0.266 (0.291)	0.329 (0.291)
German Legal Origin					-0.044 (0.114)	0.036 (0.119)	0.243 (0.259)	0.261 (0.259)
Latitute						0.436 (0.314)	-0.749 (0.483)	-0.282 (0.483)
Tropics						-0.069 (0.337)	-0.396 (0.302)	-0.283 (0.302)
Catholic Fraction							0.333** (0.147)	0.244** (0.147)
Muslim Fraction							-0.252* (0.126)	-0.268* (0.126)
Protestant Fraction							0.782*** (0.270)	0.427*** (0.270)
Constant	-0.482* (0.241)	-0.372 (0.344)	-0.689* (0.365)	-0.945** (0.361)	-0.677 (0.417)	-1.212** (0.556)	-0.676 (0.597)	
Observations	66	66	66	65	64	63	63	63
R <sup>2</sup>	0.227	0.231	0.296	0.508	0.576	0.590	0.662	0.662

Notes: \*, \*\*, \*\*\* denote significance levels of 10%, 5% and 1% respectively.

<sup>3</sup>To put it more specifically, those Protestant that were followers of Calvin (the Puritans in Britain and America) were taught that prospering economically was a sign that they were members of the « elect » destined for heaven in the next life. Thus, greed, far from being a deadly sin, was enshrined as a positive good in the culture of both Britain and America.

#### IV. Robustness checks

In this section, we perform several robustness checks using the specification in Column 7 of Table 1 as baseline. These checks include: controlling for influential observations; using alternative sample periods and varying the conditioning information set.

In order to further improve the quality of estimations, we control for influential observations following M-estimators of Huber (1973) by employing iteratively weighted least squares (IWLS). As documented by Midi and Talib (2008), compared to the approach by OLS, the IWLS technique has the advantage of simultaneously controlling for problems arising from the presence of outliers and/or heteroscedasticity. The results in Table 2 in terms of signs and significance remain consistent with those established in Table 1. Moreover, the estimate corresponding to aerial isolation is now significant. Next, in Column 3, we perform the sensitivity check on baseline estimates with control variables, after dropping the smallest observations. The corresponding findings are consistent with baseline results. Lastly, following Nunn and Puga (2012, pp. 25-26) and Kodila-Tedika and Asongu (2015), we adopt a systematic approach of eliminating influential observations for which  $DFBETA| > 2/\sqrt{N}$ , where N is the number of observations. Corresponding findings in Column 4 of Table 2 are consistent with baseline specifications<sup>4</sup>.

---

<sup>4</sup>“The *DFBETA* for a given predictor and for a specific observation is the difference between the regression coefficient calculated for all of the data and the regression coefficient calculated with that observation deleted, scaled by the standard error calculated with the observation deleted” (Seif, 2014, p. 148).

**Table 2: Controlling for outliers**

	Dependent Variable: Private credit/GDP (2000-2010)		
	IWLS	Omit Smallest	Omit if $ \text{DFBETA}  > 2\sqrt{N}$
Geographical isolation	0.125*** (0.032)	0.085** (0.040)	0.103*** (0.022)
Aerial isolation	0.054* (0.032)	0.054 (0.037)	0.058 (0.037)
Constant	-1.276** (0.588)	-0.189 (0.503)	-0.644* (0.371)
Observations	63	60	52
R <sup>2</sup>	0.720	0.654	0.804

Notes: \*, \*\*, \*\*\* denote significance levels of 10%, 5% and 1% respectively. Control variables in the last column of Table 1 are included.

In Table 3, we employ the alternative sample periods for further robustness purposes. These include: 1980-2010; 1985-2010; 1990-2010 and 1995-2010. The resulting findings confirm the direction of the underlying correlation and further reveal that irrespective of periodicities, the link between financial development and geographical isolation is positive. Moreover, the the coefficient on geographical isolation slightly increased from 1980-2010 to 1995-2010. This incremental effect suggests that the nexus is more apparent in the contemporary era.

**Table 3: Estimates based on alternative sample periods**

	Dependent Variable: Private credit/GDP			
	1980–2010	1985–2010	1990–2010	1995–2010
Geographical isolation	0.062* (0.031)	0.065** (0.032)	0.075** (0.034)	0.081** (0.037)
Aerial isolation	0.027 (0.031)	0.034 (0.033)	0.041 (0.035)	0.049 (0.036)
Constant	-0.033 (0.412)	-0.072 (0.426)	-0.142 (0.451)	-0.156 (0.481)
Observations	62	62	62	62
R <sup>2</sup>	0.660	0.674	0.676	0.670

Notes: \*, \*\*, \*\*\* denote significance levels of 10%, 5% and 1% respectively. Control variables in the last column of Table 1 are included.

In Table 4 below, we control for other impacts to further assess the robustness of our baseline findings. We augment our baseline model with other controls such as: ethnic fragmentation; institutions; social capital; continents and income. The definitions of these variables and corresponding sources are disclosed in the Appendix. From a more general perspective, the new variables account for the unobserved heterogeneity that was not included in baseline regressions. The baseline results are confirmed in terms of significance and sign, though the correlation is lower with the addition of income, institutions and ethnic fractionalization and higher when social capital is added. The additional control variables display anticipated signs because income levels, institutions and social capital are positively related to financial development whereas ethnic fractionalization has the opposite effect, as in Girma and Shortland (2008); Angand Kumar (2014) and Guiso et al. (2004).

We briefly document the selection of additional covariates. Guiso et al. (2004) have articulated that social capital has been instrumental in improving financial development. The positive role of institutions has also been documented by Girma and Shortland (2008). That ethnic diversity impairs financial development was articulated by (Beck et al., 2003). Asongu (2012a) and Ang and Kumar (2014) have shown that wealthy countries are associated with higher levels of financial development.



**Table 4: Controlling for other effects**

	Dependent Variable: Private credit/GDP (2000-2010)					
	Add Ethnic Fractionalization	Add Institutions	Add Social Capital	Add Continents	Add Income	Add all other effet
Geographical isolation	0.075* (0.039)	0.060* (0.033)	0.085** (0.040)	0.069 (0.051)	0.067 (0.041)	0.097** (0.045)
Aerial isolation	0.051 (0.035)	0.058* (0.032)	0.051 (0.034)	0.076 (0.054)	0.060 (0.037)	0.041 (0.061)
Ethnic Fractionalization	-0.330* (0.167)					0.037 (0.226)
Institutions		0.059*** (0.020)				0.052** (0.025)
Social Capital			0.825** (0.377)			0.917** (0.402)
Europe				0.071 (0.205)		0.132 (0.233)
Asia				-0.040 (0.165)		0.188 (0.232)
IGDP					0.081* (0.044)	0.025 (0.066)
Constant	0.079 (0.533)	-0.750 (0.589)	-0.625 (0.612)	-0.624 (0.610)	-1.316** (0.561)	-1.258 (0.743)
Observations	62	63	49	63	63	49
R <sup>2</sup>	0.685	0.715	0.790	0.664	0.682	0.838

Notes: \*, \*\*, \*\*\* denote significance levels of 10%, 5% and 1% respectively. Control variables in the last column of Table 1 are included.

We perform further robustness checks by using alternative financial development indicators. The scope of this extension is not limited to the financial intermediary sector (or short term finance) but is extended to stock markets (or long term finance). Table 5, Table 6, Table 7 and Table 8 respectively show results corresponding to domestic credit, stock market capitalization, stock market value traded and stock market turnover ratio. The findings are not consistent with those established earlier because financial intermediary development is more connected to geographical isolation compared to stock market development which is more related to aerial isolation.

**Table 5: Using domestic credit as a measure of financial development**

	Dependent variable: Domestic Credit/GDP (2000-2010)				
	I	II	III	IV	V
Geographical isolation	0.070 (0.051)	0.106** (0.050)	0.039 (0.046)	0.055 (0.053)	0.061 (0.052)
Aerial isolation	0.062 (0.047)	0.061 (0.042)	0.064 (0.059)	0.053 (0.042)	0.062 (0.046)
Social Capital		0.628 (0.494)			
Institutions			0.071** (0.027)		
Ethnic Fractionalization				-0.544** (0.252)	
IGDP					0.054 (0.059)
Constant	-0.502 (0.755)	-0.381 (0.662)	-0.591 (0.680)	0.523 (0.693)	-0.930 (0.856)
Number of observations	63	49	63	62	63
R <sup>2</sup>	0.602	0.733	0.659	0.647	0.608

Notes: \*, \*\*,\*\*\* denote significance levels of 10%, 5% and 1% respectively. Control variables in the last column of Table 1 are included.

**Table 6: Using stock market capitalization as a measure of financial development**

	Dependent variable: Stock Market Capitalization/GDP (2000-2010)				
	I	II	III	IV	V
Geographical isolation	0.034 (0.060)	0.011 (0.065)	0.031 (0.062)	0.011 (0.070)	0.025 (0.061)
Aerial isolation	0.048 (0.049)	0.053 (0.036)	0.048 (0.049)	0.058 (0.053)	0.082 (0.069)
IGDP		0.156** (0.067)			
Ethnic Fractionalization			-0.081 (0.252)		
Institutions				0.042 (0.037)	
Social Capital					0.353 (0.451)
Constant	-0.070 (0.868)	-1.436 (1.056)	-0.046 (0.870)	-0.178 (0.830)	-0.385 (0.868)
Number of observations	51	51	51	51	43
R <sup>2</sup>	0.675	0.723	0.676	0.688	0.721

Notes: \*, \*\*,\*\*\* denote significance levels of 10%, 5% and 1% respectively. Control variables in the last column of Table 1 are included.

**Table 7: Using stock market value traded as a measure of financial development**

	Dependent variable: Stock Market Value Traded/GDP (2000-2010)				
	I	II	III	IV	V
Geographical isolation	0.073 (0.057)	0.055 (0.057)	0.062 (0.061)	0.040 (0.059)	0.045 (0.055)
Aerial isolation	0.128** (0.059)	0.136*** (0.048)	0.131** (0.058)	0.142** (0.064)	0.164* (0.088)
IGDP		0.135 (0.099)			
Ethnic Fractionalization			-0.396 (0.383)		
Institutions				0.059 (0.041)	
Social Capital					0.765 (0.741)
Constant	-1.033 (0.907)	-2.353* (1.360)	-1.011 (0.898)	-1.204 (0.889)	-1.140 (0.908)
Number of observations	51	51	51	51	43
R <sup>2</sup>	0.641	0.669	0.658	0.663	0.761

Notes: \*, \*\*, \*\*\* denote significance levels of 10%, 5% and 1% respectively. Control variables in the last column of Table 1 are included.

**Table 8: Using stock market turnover ratio as a measure of financial development**

	Dependent variable: Stock Market Turnover ratio/GDP (2000-2010)				
	I	II	III	IV	V
Geographical isolation	0.117 (0.108)	0.108 (0.111)	0.110 (0.111)	0.087 (0.120)	0.028 (0.112)
Aerial isolation	0.234** (0.109)	0.236** (0.107)	0.235** (0.111)	0.247** (0.117)	0.389*** (0.103)
IGDP		0.057 (0.171)			
Ethnic Fractionalization			-0.218 (0.520)		
Institutions				0.053 (0.071)	
Social Capital					-1.033 (0.893)
Constant	-2.746* (1.367)	-3.249* (1.630)	-2.681* (1.432)	-2.884** (1.360)	-1.878 (1.263)
Number of observations	51	51	51	51	43
R <sup>2</sup>	0.399	0.402	0.402	0.410	0.558

Notes: \*, \*\*, \*\*\* denote significance levels of 10%, 5% and 1% respectively. Control variables in the last column of Table 1 are included.

The findings established broadly confirm the strand of literature questioning the relevance of openness in financial intermediary development by means of allocation efficiency and international risk-sharing. As discussed in the theoretical underpinnings of the study, there is a strand of literature maintaining that openness results in global financial instability (Stiglitz, 2000; Rodrik, 1998; Bhagwati, 1998) while another strand maintains that growing financial integration has improved economic stability in developed countries while enabling low-income countries to make the transition to middle income countries (Fischer, 1998; Summers, 2000).

The findings can also be viewed to be in accordance with recent development literature that openness has not resulted in more investment in developing countries and stability in developed countries (see Rodrik & Subramanian, 2009). This is essentially because, according to the narrative, countries that have enjoyed more economic development in recent decades have surprisingly been those that have been least opened. For instance, Asongu (2014) has argued that contemporary evidence on the development rewards from openness remain unpersuasive, indirect and speculative. Moreover, the findings also support the view that more resources from economic openness are not necessarily better. *“As long as the world economy remains politically divided among different sovereign and regulatory authorities, global finance is condemned to suffer from deformation far worse than those of domestic finance. Depending on the context and country, the appropriate role of policy will be as often to stem the tide of capital flows as to encourage them. Policymakers who view their challenges exclusively from the latter perspective will get it badly wrong”* (Rodrik & Subramanian, 2009, pp. 16-17).

## V. Conclusion

There is a recent strand of literature documenting that prehistoric geographical isolation created fundamental cultural effects on the development process that have contributed to contemporary variations in economic development. This study has expanded this strand of literature by assessing whether pre-historic geographical isolation is related to development outcomes such as financial development. We have exploited pre-historic cross-country geographical isolation differences in order to assess its effect on financial development across the globe. Pre-historic geographical isolation is defined as prior to the advent of airborne and sea-faring technologies of transportation. We find that pre-historic geographical isolation has been beneficial to development because it has contributed to contemporary cross-country differences in financial intermediary development. The relationship is robust to alternative samples, different estimation techniques, outliers and varying conditioning information sets. The findings broadly confirm the positive relationship between geographical isolation and GDP per capita established by Ashraf et al. (2010). Unfortunately, the established positive relationship between geographic isolation and financial intermediary development does not significantly extend to stock market development.

Given that Ashraf et al. 2010 and Ozak (2012, 2016) have shown that isolation may affect development through various cultural or institutional channels, financial development established in the study may be one of such channels given the consensus on the positive relationship between financial development and economic development (Nyasha & Odhiambo, 2015a; Nyasha & Odhiambo, 2015b). Notwithstanding, financial development is the final result of development. Under this scenario, it implies that the hegemonic and neoliberal arguments may be used to justify the need for isolation in view of increasing financial development. These arguments also double as channels that may dissuade openness or motivate isolation. We discuss these arguments in detail below.

First, hegemonic deterrence to openness which has been clarified in Section I maintains that governments may be averse to opening-up their economies because openness, especially in the perspective of globalization is viewed as a hidden attempt by the more powerful nations and corporations to control the less powerful. This view is well articulated by Asongu and Nwachukwu (2017) on recent advances in finance for inclusive development: a study which has been motivated by the hegemonic perspective. Accordingly, the following facts are for the most part traceable to growing openness. World Hunger (2010) has maintained that the principal cause of hunger and poverty in the contemporary world is a globalised economic system which encourages a very tiny minority to own a vast majority of global wealth whereas the rest of the world is just left to survive. Global inequality has been rising over the past decades (Freeman, 2010; Milanovic, 2011) and according to Joseph Stiglitz: *“There has been no improvement in well-being for the typical American family for 20 years. On the other side, the top one percent of the population gets 40 percent more in one week than the bottom fifth receive in a full year”* (Nabi, 2013, p.10). Some narratives posit that only the Top one percent have benefited from the recent economic recovery (Covert, 2015). While in 2015 the income of the Top one percent was estimated to exceed that of the Bottom ninety nine percent by 2016 (Oxfam, 2015), in 2017 eight men in the world owned the same wealth as half of the world’s population or 3.6 billion people (Oxfarm, 2017).

Second, the neoliberal deterrent to openness may build on the evidence that openness has been detrimental to financial development owing of the intensity and magnitude of global crisis. This position can be summarised from Eichengreen and Bordo (2002) and Buckle (2009): *“The modern era of globalisation has been associated with significant economic transformation around the world, but also an increasing frequency of financial crises. According to Eichengreen and Bordo (2002) there were 39 national or international financial crises between 1945 and 1973. Their frequency increased to 139 between 1973 and 1997,*

*culminating in the Asian financial crisis. These crises occurred predominantly, but not exclusively, in emerging economies”* (Buckle, 2009, p. 36).

Future studies can improve the extant knowledge by assessing if established linkages withstand further empirical validity when ‘contemporary development’ is replaced with ‘historic development’ as an outcome variable. Moreover, assessing the relationship between isolation and other macroeconomic outcomes is also an interesting future research direction. The main caveat of the study is that the findings can be interpreted exclusively as relationships, not causality. Hence, as more data become available, it will be interesting to assess whether the established linkages hold from the perspective of causality.

## Appendices

### Appendix A. Data sources and summary statistics of variables

**Table A1. Definitions and Sources of variables**

<b>Variables</b>	<b>Definitions</b>	<b>Sources</b>
Private credit	Value of financial intermediaries credits to the private sector as a share of GDP (excludes credit to the public sector and credit issued by central and development banks), average over 2000–2010	World Bank WDI online database; Beck et al. (2010)
Domestic credit	“Comprised of private credit as well as credit to the public sector (central and local governments and public enterprise) as a share of GDP, average over 2000–2010”	World Bank WDI online database; Beck et al. (2010)
Stock market capitalization	“Value of listed companies shares on domestic exchanges as a share of GDP, average over 2000–2010”	World Bank WDI online database; Beck et al. (2010)
Stock market value traded	“Total value of domestic shares traded (on domestic exchanges) during the period as a share of GDP, average over 2000–2010”	World Bank WDI online database; Beck et al. (2010)
Stock market turnover ratio	“Ratio of trades in domestic shares divided by market capitalization, average over 2000–2010”	World Bank WDI online database; Beck et al. (2010)
Creditor rights	An index of the protection of creditor rights in 2000. It reflects the ease with which creditors can secure assets in the event of bankruptcy. It takes on discrete values of 0 (weak creditor rights) to 4 (strong creditor rights)	Djankov et al. (2007)
Trade openness	Sum of exports and imports of goods and services as a share of GDP in 2000	World Bank WDI online Database
Financial openness	Sum of gross stock of foreign assets and liabilities as a share of GDP in 2000	Lane et al. (2007)
Legal origins	Dummy variable that takes a value of one if a country’s legal system is of French, German or Scandinavian Civil Law origin and zero otherwise	La Porta et al. (2008)
Latitude	Absolute value of the latitude of a country, scaled between zero and one, where zero is for the location of the equator and one is for the poles	La Porta et al. (1999)
Tropics	The percentage of land area classified as tropical and subtropical based on the Koeppen-Geiger system	Gallup et al. (1999)
Religion variables	A set of three variables that identifies the percentage of a country’s population in the 1980s that follows Catholic, Muslim and Other religion	La Porta et al. (1999)
Ethnic Fractionalization	An index of ethnic fractionalization, constructed as one minus the Herfindahl index of the share of the largest ethnic groups. It reflects the probability that two individuals, selected at random from a country’s population, will belong to different ethnic groups. The index ranges from 0 to 1 where the higher the value the greater the fractionalization in a country	Alesina et al. (2003)
Institutional Quality	An overall indicator of institutional quality measured as the sum of the six sub-indices for 2000 from World Bank Governance Indicators (WBI): voice and accountability, political stability and absence of violence, government effectiveness, regulatory quality, rule of law, and control of corruption. Countries with higher values on this index have	Kaufmann et al. (2010)



---

	institutions of greater quality	
Social Capital	Data on trust between individuals in a given country. Measured by taking the percentage of a population that answers ‘Yes’ to the World Value Survey (WVS) question ‘In general, do you think that most people can be trusted?’, supplemented by data from the Danish Social Capital Project, the Latinobarometro and the Afrobarometer	Bjørnskov (2008)
Geographical isolation	The unweighted average of the time required to reach the country's capital along cost minimizing paths.	Quamrul et al. (2010).
Aerial isolation	It represents the loss between two points. It is the conventional detrimental effect of isolation.	Quamrul et al. (2010).

---

**Table A2.Descriptive statistics**

<b>Variables</b>	<b>Observations</b>	<b>Mean</b>	<b>Standard Deviation</b>	<b>Minimum</b>	<b>Maximum</b>
Private credit	180	0.504	0.463	0.019	2.303
Domestic credit	180	0.596	0.544	-0.297	3.111
Stock market capitalization	124	0.494	0.584	0.000	4.238
Stock market value traded	122	0.306	0.561	0.000	3.447
Stock market turnover ratio	122	0.434	0.561	0.000	2.663
Geographic isolation	68	7.456	1.447	5.501	12.052
Aerial isolation	68	7.918	1.499	6.724	13.101
Creditorrights	216	1.826	0.935	0	4
Trade openness	180	0.883	0.509	0.010	3.720
Financial openness	177	2.156	2.521	0.424	23.977
Latitude	208	0.283	0.189	0.0110	0.8
Tropics	165	0.374	0.436	0	1
Catholic	207	0.320	0.360	0	0.991
Muslim	207	0.219	0.353	0	0.999
Protestant	205	0.145	0.233	0	0.998
EthnicFractionalization	188	0.440	0.258	0	0.930
InstitutionalQuality	189	2.338	3.782	-6.654	9.419
Social Capital	111	0.262	0.140	0.034	0.654
Income	180	8.528	1.304	5.561	11.142

**Table A3. Correlation Matrix (to add geographic isolation and aerial isolation)**

Variables	1	2	3	4	5	6	7	8	9	10	11	12	13	14	15
Privatecredit (1)	1.000														
Geographic isolation (2)	0.468	1.000													
Creditorrights (3)	0.127	-0.240	1.000												
Trade openness (4)	0.125	0.137	0.138	1.000											
Financial openness (5)	0.571	0.255	-0.063	0.180	1.000										
Latitude (6)	0.206	-0.229	0.191	0.170	0.252	1.000									
Tropics (7)	-0.006	0.355	-0.109	-0.059	-0.167	-0.601	1.000								
Catholic (8)	0.482	0.337	0.072	0.052	0.371	0.347	-0.208	1.000							
Muslim (9)	-0.428	-0.213	-0.154	-0.123	-0.199	-0.500	-0.129	-0.412	1.000						
Protestant (10)	0.395	0.100	-0.028	0.110	0.416	0.529	-0.138	0.001	-0.319	1.000					
Aerial isolation (11)	0.028	0.195	0.011	0.035	-0.190	-0.382	0.709	-0.271	-0.152	-0.115	1.000				
Domesticcredit (12)	0.900	0.535	0.092	0.070	0.584	0.023	0.022	0.445	-0.256	0.275	-0.036	1.000			
Stock marketcapitalization (13)	0.601	0.326	-0.138	0.147	0.710	-0.078	-0.019	0.095	0.026	0.312	-0.045	0.579	1.000		
Stock market value traded (14)	0.648	0.290	-0.071	-0.092	0.591	0.102	-0.034	0.144	-0.126	0.433	0.083	0.581	0.802	1.000	
Stock market turnover ratio (15)	0.239	0.119	0.071	-0.254	0.099	0.004	0.0623	0.010	0.052	0.202	0.242	0.197	0.197	0.577	1.000

## References

- Aghion, P., & Bolton, P., (1992). “An incomplete contracts approach to financial contracting”. *Review of Economic Studies* 59(3), pp. 473–494.
- Aizenman, J., & Glick, R., (2009). “Sterilization, Monetary Policy, and Global Financial Integration”. *Review of International Economics*, 17(4), 777-801.
- Alesina, A., Devleeschauwer, A., Easterly, W., Kurlat, S., & Wacziarg, R., (2003). “Fractionalization”. *Journal of Economic Growth* 8(2), pp.155–194.
- Ang, J. B., (2013). “Are modern financial systems shaped by state antiquity?”. *Journal of Banking & Finance*, 37(11), pp. 4038–4058.
- Ang, J. B., & Kumar, S., (2014). “Financial development and barriers to the cross-border diffusion of financial innovation”, *Journal of Banking & Finance* 39(February), pp. 43–56.
- Ashraf, Q., Ozak, O., & Galor, O., (2010). “Isolation and Development”, *Journal of the European Economic Association*, 8(2-3), pp. 401-412.
- Asongu, S. A. (2012a). “Government Quality Determinant of Stock Market Performance in African Countries”, *Journal of African Business*, 13(3), pp.183-199.
- Asongu, S. A. (2012b). “Law and finance in Africa”, *Brussels Economic Review*, 55(4), 385-408.
- Asongu, S.A. (2013), “Globalization and Africa: implications for human development”, *International Journal of Development Issues*, 12(3), pp. 213-238.
- Asongu, S. A., (2014). “Financial development dynamic thresholds of financial globalisation: evidence from Africa”, *Journal of Economics Studies*, 41(2), pp. 166-195.
- Asongu, S. A., & De Moor, L., (2017). “Financial Globalisation Dynamic Thresholds for Financial Development: Evidence from Africa”, *European Journal of Development Research*, 29(1), pp. 192–212.
- Asongu, S. A., & Nwachukwu, J. C., (2017). “Recent finance advances in information technology for inclusive development: a survey”, *African Governance and Development Institute Working Paper No. 17/009, Yaoundé.*
- Azzimonti, M., De Francisco, E., & Quadri, V., (2014). “Financial Globalisation, Inequality and the Rising Public Debt”, *American Economic Review*, 104(8), pp. 2267-2302.
- Baltagi, B.H., Demetriades, P., & Law, S. H., (2009). “Financial development and openness: evidence from panel data”. *Journal of Development Economics* 89(2), pp. 285–296.
- Batuo, M. E., & Asongu, S. A., (2015). “The impact of liberalisation policies on income inequality in African countries”, *Journal of Economic Studies*, 42(1), pp. 68-100.
- Becerra, O., Cavallo, E.A., & Scartascini, C., (2012). “The politics of financial development: the role of interest groups and government capabilities”. *Journal of Banking and Finance* 36(3), pp. 626–643.
- Beck, T., Demirgüç-Kunt, A. & Levine, R. (2003). “Law, Endowments, and Finance”. *Journal of Financial Economics* 70(2), pp. 137-181.
- Beck, T., Demirgüç-Kunt, A. & Levine, R. (2010). “Financial Institutions and Markets Across Countries and Over Time: The Updated Financial Development and Structure Database”. *World Bank Economic Review* 24(1), pp. 77-92.
- Beck, T., Levine, R., & Loayza, N., (2000). “Finance and the sources of growth”. *Journal of Financial Economics* 58(1-2), pp.261–300.
- Bhagwati, J., (1998). “The Capital Myth. The Difference between Trade in Widgets and Dollars”, *Foreign Affairs*, 7(3), pp. 7-12.
- Bjørnskov, C., (2008). “Social trust and fractionalization: a possible reinterpretation”. *European Sociological Review* 24(3), pp. 271–283.
- Buckle, B., (2009). “Asia-Pacific Growth. Before and After the Global Financial Crisis”, *Policy Quarterly*, 5(4), pp. 36-45.
- Chinn, M.D., & Ito, H. (2002). “Capital Account Liberalization, Institutions and Financial Development: Cross Country Evidence”, *NBER Working Paper, No. 8967*, Cambridge, MA: National Bureau of Economic Research.
- Coccorese, P., (2012). “Information sharing, market competition and antitrust intervention: a lesson from the Italian insurance sector”, *Applied Economics*, 44(3), pp. 351-359.

- Coccorese, P., &Pellecchia, A., (2010). “Testing the ‘Quiet Life’ Hypothesis in the Italian Banking Industry”, *Economic Notes by BancadeiPaschi di Siena SpA*, 39(3), pp. 173-202.
- Covert, B., (2015). “The 1 Percent Have Gotten All The Income Gains From The Recovery”, *Think Progress*, <http://thinkprogress.org/economy/2015/01/28/3616308/income-inequality-2013/>(Accessed: 04/02/2015).
- Djankov, S., McLiesh, C.&Shleifer, A. (2007). “Private credit in 129 countries”.*Journal of Financial Economics*, 84(2), pp. 299-329.
- Dornbusch, R., (1996, August/September). “It’s Time for a Financial Transactions Tax”, *International Economy*.
- Efobi, E. R., Osabuohien, E. S., & Stephen, O., (2015). “One Dollar, One Bank Account: Remittance and Bank Breadth in Nigeria”, *Journal of International Migration and Integration*, 16(3), pp. 761-781.
- Eichengreen, B., &Bordo M. D., (2002). “Crises Now and Then: what lessons from the last era of financial globalization?”,*NBER Working Paper* No. 8716, Cambridge.
- Fischer, S., (1998). “Capital Account Liberalization and the Role of the IMF”, in “Should the IMF Pursue Capital-Account Convertibility?”, *Essays in International Finance*, Department of Economics, Princeton University, 207, pp. 1-10.
- Fish, S. M. (2002). “The New Era in World Politics after September 11: Islam and Authoritarianism”, *World Politics*, 55(1), pp. 4-37.
- Freeman, R. B., (2010). “It’sfinancialization”, *International Labour Review*, 149(2), pp. 163-183.
- Gallup, J. L., Sachs, J. D., &Mellinger, A., (1999). “Geography and Economic Development”.Center for International Development (Harvard University), Working Papers No.1, Cambridge.
- Girma, S. &Shortland, A. (2008).“The political economy of financial development”.*Oxford Economic Papers* 60(4), pp. 567-596.
- Grennes, T. (2003), “Creative destruction and globalization”, *Cato Journal*, 22(3), pp. 543-558.
- Guiso, L., Sapienza, P., &Zingales, L., (2004). “The role of social capital in financial development”.*American Economic Review* 94(3), pp. 526–556.
- Huber, P. J., (1973). “Robust Regression: Asymptotics, Conjectures and Monte Carlo”, *The Annals of Statistics*, 1(5), pp.799-821.
- Kaufmann, D., Kraay, A., &Mastruzzi, M., (2010). “The Worldwide Governance Indicators: Methodology and Analytical Issues”. *Policy Research Working Paper Series* 5430, The World Bank, Washington.
- Kayizzi-Mugerwa, S., (2001).“Globalisation, Growth and Income Inequality: The African Experience”, *Working Paper* No. 186, OECD Development Centre, Paris.
- Kodila-Tedika, O., &Asongu, S. A., (2015a).“Tribalism and financial development”,*African Governance and Development Institute Working Paper* No. 15/018, Yaoundé.
- Kodila-Tedika, O., &Asongu, S. A., (2015b). “The effect of intelligence on financial development: a cross-country comparison”, *Intelligence*, 51(July-August), pp.1-9.
- Kose, M. A., Prasad, E. S., & Taylor, A. D. (2011).“Threshold in the process of international financial integration”, *Journal of International Money and Finance* 30(1), pp.147-179.
- Kose, M. A., Prasad, E. S., &Rogoff, K., Wei, S. J., (2006). “Financial globalization: areappraisal”, *IMF Staff Papers*,56(1), pp. 8-62.
- Lane, P. R.,&Milesi-Ferretti, G. M., (2007). “The external wealth of nations market:Revised and extended estimates of foreign assets and liabilities, 1970–2004”.*Journal of International Economics* 73(2), pp. 223–250.
- La Porta, R., Florencio, L.-d.-S., Shleifer, A., &Vishny, R.W., (1997). “Legaldeterminants of external finance”.*Journal of Finance* 52(3), pp. 1131–1150.
- La Porta, R., Florencio, L.-d.-S., Shleifer, A., &Vishny, R.W., (1998). “Law andFinance”.*Journal of Political Economy* 106(6), pp. 1113–1155.
- La Porta, R., Lopez-de-Silanes, F., &Shleifer, A. (2008). “The Economic Consequences of Legal Origins”.*Journal of Economic Literature* 46(2), pp. 285-332.

- La Porta, R., Lopez-de-Silanes, F., Shleifer, A., & Vishny, R., (1999). "The quality of government". *Journal of Law, Economics and Organization* 15(1), pp. 222–279.
- Leung, H. M., (2003). "External debt and worsening business cycles in less developed countries", *Journal of Economic Studies*, 30(2), pp. 155-168.
- Levine, R., (1997). "Financial development and economic growth: views and Agenda". *Journal of Economic Literature*, 35(2), pp. 688–726.
- Levine, R., (2005). Finance and growth: theory and evidence. In: Aghion, P., Durlauf, S. (Eds.), *Handbook of Economic Growth*. Elsevier Science, Netherlands.
- Midi, H., & Talib, B. A. (2008). "The Performance of Robust Estimator on Linear Regression Model Having both Continuous and Categorical Variables with Heteroscedastic Errors", *Malaysian Journal of Mathematical Sciences*, 2(1), 25-48.
- Motelle, S., & Biekpe, N., (2015). "Financial integration and stability in the Southern African development community", *Journal of Economics and Business*, 79(May-June), pp. 100-117.
- Mulwa, M. R., Emrouznejad, A., & Murithi, F. M., (2009). "Impact of liberalization on efficiency and productivity of sugar industry in Kenya", *Journal of Economic Studies*, 36 (3), pp. 250 -264.
- Musila, J. W., & Sigué, S. P., (2010). "Corruption and International Trade: An Empirical Investigation of African Countries", *World Economy*, 33(1), pp.129-146.
- Nabi, M. S., (2013), "Role of Islamic Finance in Promoting Inclusive Economic Development", Global Sustainable Finance Conference 2013, Germany (4th to 5th July 2013), [http://www.wfdfi.net/wp-content/uploads/2013/09/6-Mahmud\\_Nabi.pdf](http://www.wfdfi.net/wp-content/uploads/2013/09/6-Mahmud_Nabi.pdf) (Accessed: 04/02/2015).
- Nyasha, S., & Odhiambo, N. M. (2015a). "Do banks and stock market spur economic growth? Kenya's experience", *International Journal of Sustainable Economy*, 7(1), pp. 54-65.
- Nyasha, S., & Odhiambo, N. M. (2015b). "The Impact of Banks and Stock Market Development on Economic Growth in South Africa: An ARDL-bounds Testing Approach", *Contemporary Economics*, 9(1), pp. 93-108.
- Nunn, N., & Puga, G., (2012). "Ruggedness: The blessing of bad geography in Africa". *Review of Economics and Statistics*, 94(4), pp. 20-36.
- Obeng-Odoom, F., (2013). "Africa's Failed Economic Development Trajectory: A Critique", *African Review of Economics and Finance*, 4(2), pp. 151-175.
- Obeng-Odoom, F., (2015). "Africa: On the Rise, but to Where?" *Forum for Social Economics*, 44(3), pp. 234-250.
- Obstfeld, M., (1998). "The Global Capital Market: Benefactor or Menace?" *Journal of Economic Perspectives*, 12(4), pp. 9-30.
- Osabuohien, E. S., & Efobi, E. R., (2013). "Africa's Money in Africa", *South African Journal of Economics*, 81(2), pp. 292-306.
- Owusu, E. L., & Odhiambo, N. M., (2014). "Stock market development and economic growth in Ghana: an ARDL-bounds testing approach", *Applied Economics Letters*, 21(4), pp. 229-234.
- Oxfam (2015). "Richest 1% will own more than all the rest by 2016", *Oxfam International*, <http://www.oxfam.org/en/pressroom/pressreleases/2015-01-19/richest-1-will-own-more-all-rest-2016> (Accessed: 04/02/2015).
- Oxfam (2017) "Just 8 men own same wealth as half the world", *Oxfam International*, <https://www.oxfam.org/en/pressroom/pressreleases/2017-01-16/just-8-men-own-same-wealth-half-world> (Accessed: 25/02/2017).
- Ozak, O., (2016). "Distance to the Pre-industrial Technological Frontier and Economic Development", *MPRA Paper* No. 74737, Munich.
- Ozak, O., (2016). "Distance to the Technological Frontier and Economic Development", Departmental Working Papers 1201, Southern Methodist University, Department of Economics.
- Petras, J., & Veltmeyer, H., (2001), *Globalization Unmasked: Imperialism in the 21st Century*, Zed Books, London.

- Prasad, E. S., & Wei. S. J., (2007). "China's Approach to Capital Inflows: Patterns and Possible Explanations". In S. Edwards ed., *Capital Controls and Capital Flows in Emerging Economies: Policies, Practices, and Consequences*. Chicago: University of Chicago Press.
- Price, G. N., & Elu, J. U., (2014). "Does regional currency integration ameliorate macroeconomic shocks in sub-Saharan Africa? The case of the 2008-2009 global financial crisis", *Journal of Economic Studies*, 41(5), pp. 737-750.
- Rajan, R.G., & Zingales, L., (1998). "Financial dependence and growth". *American Economic Review* 88(3), pp. 559-586.
- Rodrik, D., (1998). "Who Needs Capital-Account Convertibility?" Essays in International Finance, No. 207 (Princeton, New Jersey: Princeton University).
- Rodrik, D., & Subramanian, A., (2009). "Why Did Financial Globalization Disappoint?", *IMF Staff Papers*, 56(1), pp. 112-138.
- Rogoff, K., S., (1999). "International Institutions for Reducing Global Financial Instability", *Journal of Economic Perspectives*, 13(4), pp. 21-42.
- Scholte, J. A. (2000), *Globalisation: A Critical Introduction*, St. Martin's Press Inc, New York, NY.
- Seif, R., (2014). "Statistical Analysis of Matching Processes of Composite Materials", University of Montreal, [http://publications.polymtl.ca/1606/1/2014\\_RandaSeif.pdf](http://publications.polymtl.ca/1606/1/2014_RandaSeif.pdf) (Accessed: 24/04/2015).
- Shah, A., & Patnaik, I. (2009). "Asia Confronts the Impossible Trinity." Mimeo, NIPFPDEA.
- Sirgy, M.J., Lee, D.J., Miller, C., & Littlefield, J. E., (2004), "The impact of globalization on a country's quality of life: toward an integrated model", *Social Indicators Research*, 68(3), pp. 251-298.
- Smart, B. (2003), *Economy, Culture and Society: A Sociological Critique of Neo-liberalism*, Open University Press, Buckingham.
- Stiglitz, J.E., & Weiss, A., (1981). "Credit rationing in markets with imperfect Information". *American Economic Review* 71(3), pp. 393-410.
- Solow, R., M., (1956). "A Contribution to the Theory of Economic Growth", *Quarterly Journal of Economics*, 70(1), pp. 65-94.
- Stiglitz, J., (2000). "Capital Market Liberalization, Economic Growth and Instability", *World Development*, 28(6), pp. 1075-1086.
- Stulz, R. M., & Williamson, R., (2003). "Culture, openness, and finance". *Journal of Financial Economics* 70(3), pp. 313-349.
- Summers, L. H., (2000). "International Financial Crises: Causes, Prevention and Cures", *American Economic Review*, 90(2), pp. 1-16.
- Tchamyou, V. S., (2016). "The Role of Knowledge Economy in African Business", *Journal of the Knowledge Economy*. DOI: 10.1007/s13132-016-0417-1.
- Tchamyou, V. S., & Asongu, S. A., (2017). "Information Sharing and Financial Sector Development in Africa", *Journal of African Business*, 18(1) pp. 24-49.
- Tsai, M. (2006), *Does Globalisation Affect Human Well-being?* Department of Sociology, National Taipei University, Taiwan.
- Weber, M., (2002). *The Protestant Ethic and The Spirit of Capitalism*, (Penguin Books, 2002) translated by Peter Baehr and Gordon C. Wells.
- World Hunger (2010). "the major barrier to people's welfare and development," *Hunger Notes*, <http://worldhunger.org/harmfuleconomicssystem.htm> (Accessed: 04/02/2015).