

MPRA

Munich Personal RePEc Archive

A New Assessment of the Chinese RMB Exchange Rate

Zhibai Zhang and Langnan Chen

30. June 2014

Online at <http://mpa.ub.uni-muenchen.de/56997/>

MPRA Paper No. 56997, posted 3. July 2014 05:05 UTC

A New Assessment of the Chinese RMB Exchange Rate

Zhibai Zhang

Economics & Management College, Zhaoqing University, China

E-mail addresses: z Zhang5678@163.com, zhibai.zhang@gmail.com (Z. Zhang)

Langnan Chen

Lingnan (University) College and Institute for Economics, Sun Yat-sen University, China

E-mail address: lnscln@mail.sysu.edu.cn (L. Chen).

Abstract

The ratio, Penn effect and behavioral equilibrium exchange rate (BEER) are used to assess the level of the bilateral real exchange rate of the Chinese RMB against the US dollar in 1980–2012. The statistical indexes and economic meaning indicate that the findings from the BEER and ratio models are more reasonable. Based on the two models, the RMB was overvalued by about 10–20% in 2011–2012. Given the already overvalued currency and the not-ideal economic situation, China should (1) control its excessive money supply to suppress the purchasing power parity rate appreciation and (2) keep the level of the nominal exchange rate stable.

JEL Classification: F31; F41

Keywords: Chinese RMB; Misalignment; Ratio model; Penn effect; Behavioral equilibrium exchange rate

1. Introduction

The internal and external economic environments that China faces in the last few years have changed greatly. As China has become deeply involved in the global economic cycles, it is hard hit by the current global economic slowdown which was perhaps firstly sparked by the U.S. subprime crisis in 2007 and then again by the European debt crisis in 2010. According to the IMF's International Financial Statistics (IFS) database, China's annual real GDP growth ratio was 10.3% in 2010, 9.4% in 2011, and 7.8% in 2012. The latest data on the first half of 2013 (real GDP growth ratio was 7.6%, year by year) indicates that China's slowdown may continue.¹ In contrast with the not-ideal economic situation, the RMB appears to be appreciating steadily. Based on the IFS, the RMB real effective exchange rate index (CPI-based, 2005 = 100) rose from 115.4 in January 2010 to 137.1 in May 2013, and the nominal exchange rate (yuans per US dollar) rose from 6.83 in January 2010 to 6.17 in June 2013. Given the above seemingly perplexing phenomenon, we wonder how the RMB misalignment appears in recent years and whether the current trend of RMB is proper. That is, we want to give it a new assessment.

There are many models used in currency valuation (Égert et al., 2006; Isard, 2007; Bussière et al., 2010). For the RMB valuation, Chinn (2000) and Yang (2004) used the purchasing power parity (PPP) model, Chang and Shao (2004) and Cheung et al. (2010) used the Balassa-Samuelson (BS) regression or the Penn effect model, Funke and Rahn (2005) and Bénassy-Quéré and Lahrèche-Révil (2008) used the behavioral equilibrium exchange rate (BEER) model, Lopez-Villavicencio et al. (2012) used the fundamental equilibrium exchange rate model, You and Sarantis (2012) used the natural real exchange rate (NATREX) model, and Zhang (2012a) used the ratio model. In his conclusion to a detailed review, Isard (2007, p. 35) suggested that the assessment of equilibrium exchange rates should be informed through the application of several different methodologies.

¹ News release (in Chinese), available at <http://cn.reuters.com/article/cnBizNews/idCNL4S0FL0H420130715?sp=true>. Accessed July 20, 2013.

Therefore, we use three models (ratio, Penn effect and BEER) in this paper. The three models are chosen because they have relationships in theory base and model specification (see Section 2.1).

The rest of the paper proceeds in the following manner. Section 2 presents the models and data. Section 3 is the econometric analysis. Section 4 analyzes the reasonability of the model findings derived in Section 3. Section 5 discusses what caused the RMB overvaluation in 2011–2012. Section 6 gives our policy proposal. Finally, Section 7 concludes the paper.

2. Models and data

Before introducing the models, the definition of real exchange rate (RER) must be given. In this paper, RER is defined by Eq. (1), where P_i is the domestic price level of country i , P^* is the price level of the specific foreign country (in this paper, the United States), and NER_i (nominal exchange rate) is expressed as the national currency units per US dollar. Based on this definition, a greater value of RER represents the local currency's appreciation (against the US dollar). The RER in this definition also measures the relative price level between two countries in terms of a common currency. Thus, it is also called “the price level of the GDP of one country relative to that of the US” in the Penn World Tables database.

$$RER_i = \frac{PPP_i}{NER_i} = \frac{P_i/P^*}{NER_i} = \frac{P_i}{NER_i \times P^*} \quad (1)$$

2.1. Models

Both ratio and Penn effect models are based on an empirical regularity, which is depicted in Fig. 1.

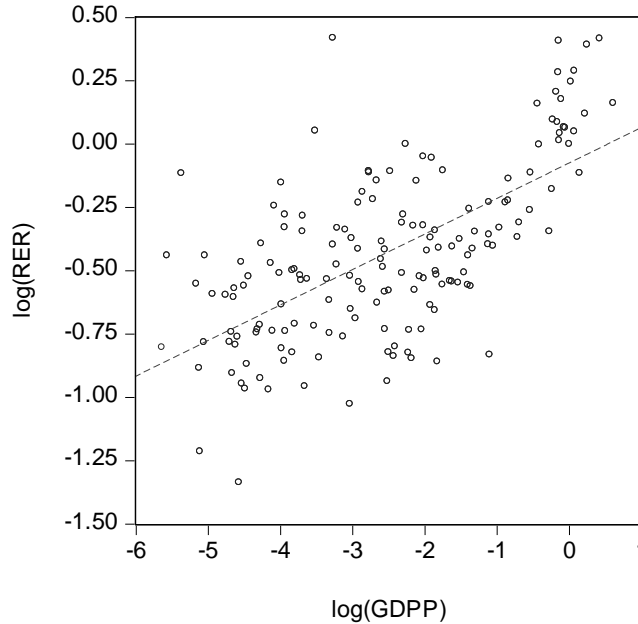


Fig. 1. RERs and GDPPs, in logarithm, of 165 countries and areas in 2012.

Notes: Both the real exchange rate (RER, defined by Eq. (1)) and GDP per capita (GDPP, constant 2005 US\$) are normalized, with the US = 1.

Sources: World Bank's World Development Indicators online database and the authors' calculation.

Fig. 1 tells us that, from a global view, a RER in a higher income-level country is often greater than that in a lower income-level country; or the price level in a higher income-level country is often greater than that in a lower income-level country, measured by one common currency (Balassa, 1964; Kravis and Lipsey, 1982; Samuelson, 1994; Rogoff, 1996; Frankel, 2006; Isard, 2007). This regularity is called the BS effect (Chang and Shao, 2004; Frankel, 2006; Xu, 2009), “Penn effect” (Samuelson, 1994; Isard, 2007; Cheung et al., 2010), “(long-run) deviations from PPP” (Rogoff, 1996), or others. Given that the Penn effect essentially refers to this empirical regularity (Samuelson, 1994) and that the BS effect is only one of its explanations (Rogoff, 1996), with the BS effect being an invalid explanation in some cases (Ito et al., 1997; Isard, 2007), the Penn effect is the more suitable name. Therefore, we call this regularity the Penn effect following Isard (2007) and Cheung et al. (2010).

Because of the existence of the Penn effect, the PPP theory does not hold between a poor and a rich country. This limitation, however, gives an idea of where the ratio and Penn effect models were born.

The ratio model, which is proposed by Zhang (2012a), uses a simple ratio relationship (Eq. (2)) to value a RER. In Eq. (2), RER_i is defined by Eq. (1). $GDPP_i$ is country i 's per capita GDP relative to that of the US (where the US = 1). Based on the ratio model, a RER should be equal to the country's GDPP (both relative to the US where the US = 1, hereafter) that is just the equilibrium RER. That is, if the value of $Ratio_i$ is one, the RER is said in equilibrium. If the value of $Ratio_i$ is more than one (or less than one), the RER is concluded as overvalued (or undervalued). For example, according to the WDI, in 2012, the RER and GDPP of Japan were 1.33 and 0.935, respectively. Thus, the $Ratio_i$ is greater than one ($1.33 / 0.935 > 1$), and the yen was overvalued by 29.7% (the yen should depreciate 29.7%, $= (1.33 - 0.935) / 1.33$, to its equilibrium value).

$$Ratio_i = \frac{RER_i}{GDPP_i} \quad (2)$$

The Penn effect model was originally used in a cross-section data setting (Chang and Shao, 2004; Frankel, 2006; Xu, 2009) and then used in a panel data setting (Cheung et al., 2010; Garroway et al., 2012). Its panel data specification in this paper is Eq. (3), where RER_{it} is defined by Eq. (1), $GDPP_{it}$ (GDP per capita) is relative to the US (where the US = 1), and log means taking the logarithm. As Eq. (3) regresses the RERs on the GDPPs, the deviations from the regression line represent the over- or undervaluation of the RERs when the Penn effect is considered (Chang and Shao, 2004). Chang (2012) gives a theoretical justification for the Penn effect model and he also points out that the logarithmic form, used in Eq. (3) and in the popular studies (Frankel, 2006; Cheung et al., 2010; Garroway et al., 2012), has a shortcoming; see his paper for details.

$$\log(RER_{it}) = \beta_0 + \beta_1 \log(GDPP_{it}) + \delta_i + \gamma_t + \epsilon_{it} \quad (3)$$

The BEER model was originally used in a time-series setting (Clark and MacDonald, 1998; MacDonald, 1999; Funke and Rahn, 2005) and then used in a panel data setting (Bayoumi et al., 2005; Maeso-Fernandez et al., 2006; Elbadawi et al., 2012). This model is perhaps the most popular one used in currency valuation. Its panel data specification in this paper is Eq. (4), where RER_{it} is defined by Eq. (1), $GDPP_{it}$ is per capita GDP relative to the United States (the US = 1) as before, and NFA is net foreign assets, also a popular explanatory variable used in the BEER model (see Funke and Rahn (2005) and Alper and Civcir (2012)). As some values for NFA are negative, the logarithm form cannot be used on NFA (though, can be used on the other two variables).

$$\log(RER_{it}) = \beta_0 + \beta_1 \log(GDPP_{it}) + \beta_2 NFA_{it} + \delta_i + \gamma_t + \epsilon_{it} \quad (4)$$

The main relations between the three models are as follows. Both ratio and Penn effect models are based on the same empirical regularity, the Penn effect. But the ratio model uses a simple ratio relationship, while the Penn effect model uses a regression analysis. The ratio model can be viewed as a special form of the Penn effect model when the following two conditions both hold: (1) the coefficients β_0 and β_1 in Eq. (3) are zero and one respectively and simultaneously; (2) the variables in Eq. (3) don't take logarithms. Zhang (2012b, p. 146) discussed the relationship of the Penn effect and BEER models in panel data setting. Concretely, the number and definition of the variables in the Penn effect model must be strictly the same as those in Eq. (3), but the number and definition of the variables in the BEER model can be quite diverse. The Penn effect model can be viewed as a special form of the BEER model, when the explained and explanatory variables of the BEER model are specially constrained. The BEER model includes the Penn effect model but also includes other specified models that do not belong to the Penn effect model. In this paper, concretely, if the variable NFA in Eq. (4) is not used, the BEER model will reduced to be the Penn effect model.

2.2. Data

All data are from the World Bank's World Development Indicators (WDI) online database. RER is defined by Eq. (1). GDPP (GDP per capita, in current US dollars) is relative to that of the US (with the US = 1) as defined in Eqs. (2)–(4).² The NFA is originally measured by current local currency and we convert it into measurement by the common US dollar using NER. The RER and GDPP are used in the ratio and Penn effect models, while NFA, along with the other two variables, is used in the BEER model.

We first sequence all the global countries by their GDP (in current US dollars) and choose the largest 29 ones among them; the GDP of each country represents greater than 0.5% of that of the world. Euro countries adopted inconsistent currencies before and after 1999, so we delete Germany, France, Italy, Spain, Netherlands, Belgium, and Austria. In the 22 biggest countries left, Russia, Poland, and Argentina are again deleted because of their many blank values for the variables. In the end, 19 of the biggest countries are left and used: United States, China, Japan, United Kingdom, Brazil, India, Canada, Australia, Mexico, Korea (Rep.), Indonesia, Turkey, Switzerland, Sweden, Norway, South Africa, Venezuela, Colombia, and Thailand; their collective GDP represented 67.6% of the world GDP in 2012.

The values for RER for all the countries and areas before 1980 are not obtained, so the sample period chosen is 1980–2012.

3. Econometric analysis

3.1. On the ratio model

When using the ratio model in the RMB valuation, the model needs a modification. Why?

² We use GDPP measured by the current US dollar and not by constant 2005 US dollars because: (1) the NER (in RER) and NFA are both measured by the current US dollar and GDPP also measured by the current US dollar should give a more comparable result; (2) the coefficients on $\log(GDPP)$ in Eq. (3) and Eq. (4) obtained by using the current US dollar are both positive and significant, which is consistent with the Penn effect, while those obtained by using constant US dollars are both negative and significant, which is in conflict with the Penn effect.

China significantly differs from the US in many respects. Most obviously, based on the WDI and in 2012, China has a population of 1.35 billion, and its GDP per capita is only 12.2% of that of the US, which has a population of 0.314 billion and almost equal land area. Besides, China is a socialist state whose economy is largely dominated by state-owned enterprises and whose regional economic development is very imbalanced; while the US is a free market economy that is largely dominated by private enterprises and its regional economic development is less imbalanced. These differences mean that directly using the ratio model on the RMB may not be appropriate and we should give it some modifications. Since taking all these differences into the model is not realistic, we only take the difference in the population. Concretely, the equilibrium RER is modified as the GDPP multiplying the ratio of China's population to the US's population. For example in 2012, RMB RER was 0.66, the GDPP in Eq. (2) (the ratio of China's GDPP to the US's GDPP) originally was 0.122, the ratio of China's population to the US's population was 4.3, and therefore the GDPP used in Eq. (2) (i.e., the equilibrium RMB RER) is modified to be 0.525 ($= 0.122 \times 4.3$) instead of 0.122. In every year, the GDPP used in Eq. (2) is modified in the same way. After modification, we actually use the ratio of China's general GDP to the US's general GDP to replace the ratio of China's per capita GDP to the US's per capita GDP in Eq. (2), which can be seen by writing them into a detailed equation.

Using the modified GDPP, the misalignment obtained from the ratio model, as well as those from the Penn effect and BEER models, is given in Table 1.

Table 1

RMB RER misalignments obtained from the three models.

Year	Ratio	Penn effect	BEER	Year	Ratio	Penn effect	BEER
1980	91.1%	43.3%	39.4%	1997	72.6%	-8.5%	-18.3%
1981	90.9%	40.6%	36.8%	1998	71.7%	-6.0%	-16.5%
1982	89.9%	38.4%	34.3%	1999	71.0%	-10.0%	-20.7%
1983	89.3%	38.3%	33.5%	2000	69.8%	-10.4%	-21.0%
1984	88.5%	36.6%	31.2%	2001	67.7%	-8.4%	-18.6%
1985	87.4%	37.0%	30.8%	2002	65.4%	-12.1%	-21.8%
1986	86.8%	29.4%	22.8%	2003	62.8%	-20.9%	-29.7%
1987	85.7%	15.6%	9.8%	2004	60.5%	-25.5%	-30.1%
1988	84.7%	10.4%	4.5%	2005	57.3%	-31.4%	-31.4%
1989	84.6%	11.6%	4.7%	2006	53.1%	-34.0%	-27.6%
1990	84.3%	8.2%	2.9%	2007	47.5%	-37.0%	-21.9%
1991	82.8%	3.4%	-2.1%	2008	42.2%	-32.3%	-5.3%
1992	81.0%	-3.9%	-10.4%	2009	34.9%	-33.6%	-1.9%
1993	79.0%	-13.1%	-20.9%	2010	29.8%	-40.4%	-0.1%
1994	77.2%	-12.1%	-20.9%	2011	24.6%	-38.6%	8.8%
1995	75.3%	-10.3%	-20.1%	2012	20.5%	-38.1%	11.4%
1996	73.8%	-8.6%	-18.7%				

Notes: The misalignments are calculated with $(\text{RER}-\text{equilibrium RER})/\text{RER}$, where RER is the abbreviation of real exchange rate. The positive (negative) values represent the overvaluation (undervaluation). The misalignments for the Penn effect and BEER models are obtained from the regressions in 1980–2012. The ratio, Penn effect and BEER models are defined in Eq. (2), Eq. (3) and Eq. (4) respectively.

Sources: World Bank's World Development Indicators online database and the authors' calculation.

In Table 1, the misalignments are calculated by using $(\text{RER} - \text{equilibrium RER}) / \text{RER}$, as used in B áassy-Qu é é and lahr áche-R évil (2008). In this definition, the misalignment is just the needed appreciation or depreciation of the RER. For example in 2012, the RMB RER was 0.66 and its equilibrium value was 0.525, so the RMB RER should depreciate by 20.5% [= $(0.66 - 0.525) / 0.66$] to its equilibrium value. In this case, the RMB RER was overvalued by 20.5%.³

Table 1 shows that, based on the ratio model, the RMB RER was overvalued in 1980–2012, with a declining trend from about 90% in 1980 to about 20% in 2012. This result is similar to that in Zhang (2012a) in terms of the trend of the misalignment change. Since the GDPP here is modified, the degree of the misalignment has been greatly reduced compared with that in Zhang (2012a).

3.2. On the Penn effect model

Table 2 gives the results of redundant fixed effect tests. The associated p-values of the statistics strongly reject the null hypothesis that the cross-section effects, period effects, or both of the effects are redundant. Thus, the two-way fixed effects estimation is appropriate and is then used.

Table 2

Redundant fixed effects tests for the Penn effect model in 1980–2012.

Effects test	Statistic	Degree of freedom	P-value
Cross-section F	26.38	(18, 575)	0.0000
Cross-section Chi-square	377.45	18	0.0000
Period F	2.43	(32, 575)	0.0000
Period Chi-square	79.38	32	0.0000
Cross-Section/Period F	12.36	(50, 575)	0.0000
Cross-Section/Period Chi-square	457.65	50	0.0000

Notes: The Penn effect model is defined in Eq. (3). Total panel (balanced) observations: 627.

Sources: World Bank's World Development Indicators online database and the authors' calculation.

The main estimation result is given in Eq. (5). Values in parentheses below the coefficients are their t-statistics (second line) and associated p-values (third line) respectively, where White cross-section standard errors and covariance are used. The slope coefficient is highly significant, confirming the existence of the Penn effect. $R^2 = 0.914$ means that the regression is a good fit.

$$\log(\text{RER}_{it}) = 0.267 + 0.413 \times \log(\text{GDPP}_{it}) + \delta_i + \gamma_t + \epsilon_{it} \quad (5)$$

(4.73) (10.72)
(0.00) (0.00)
 $R^2 = 0.914$ observations=627

The equilibrium RER from the Penn effect model, the fitted value of RER, can be solved from Eq. (5). Then the misalignment can be obtained and is (already) given in the above Table 1.

3.3. On the BEER model

Table 3 gives the redundant fixed effect tests for the BEER model. Similar to the case of the Penn effect model, the associated p-values of the statistics strongly reject the null hypothesis that the

³ The other misalignment is measured by $(\text{RER} - \text{equilibrium RER}) / \text{equilibrium RER}$, as in Frankel (2006) and Zhang (2012a). Note that the two types of misalignments are different. For this example, if we use the definition of Frankel (2006), the RMB was overvalued by 25.7% [= $(0.66 - 0.525) / 0.525$] (not 20.5%) in 2012. But the two expressions can be transformed. Let $x = (\text{RER} - \text{equilibrium RER}) / \text{equilibrium RER}$, $y = (\text{RER} - \text{equilibrium RER}) / \text{RER}$, then $y = x / (1 + x)$.

cross-section effects, period effects, or both of the effects are redundant. Therefore, in the BEER model, the two-way fixed effects estimation is also appropriately used.

Table 3

Redundant fixed effects tests for the BEER model in 1980–2012.

Effects test	Statistic	Degree of freedom	P-value
Cross-section F	31.89	(18,561)	0.0000
Cross-section Chi-square	432.67	18	0.0000
Period F	2.15	(32,561)	0.0003
Period Chi-square	71.06	32	0.0001
Cross-Section/Period F	14.36	(50,561)	0.0000
Cross-Section/Period Chi-square	506.10	50	0.0000

Notes: The BEER model is defined in Eq. (4). The panel is unbalanced (total observations: 614) because the data for NFA in some years in four countries are blank.

Sources: World Bank's World Development Indicators online database and the authors' calculation.

The main estimation result is given in Eq. (6). Values in parentheses below the coefficients are their t-statistics (second line) and associated p-values (third line) respectively, where White cross-section standard errors and covariance are used. The coefficient on $\log(\text{GDPP})$ is highly significant and correctly signed. The sign of NFA is not predicted but expected because the negative relationship between NFA and RER is consistent with many previous findings (Alper and Civcir, 2012, p. 122). Adjusted $R^2 = 0.913$ means that the regression is a good fit. The equilibrium RER from the BEER model, the fitted value of RER, can be solved from Eq. (6). Then the misalignment can be obtained and is (already) given in the above Table 1.

$$\log(\text{RER}_{it}) = 0.401 + 0.493 \times \log(\text{GDPP}_{it}) - 1.74 \times 10^{-13} \times \text{NFA}_{it} + \delta_i + \gamma_t + \epsilon_{it} \quad (6)$$

(7.29)	(13.40)	(-8.29)
(0.00)	(0.00)	(0.00)

Adjusted $R^2 = 0.913$ observations = 614

We also consider the non-stationary panel data method in the cases of the Penn effect and BEER models. The LLC unit root test indicates all the variables are $I(1)$, and the Johansen Fisher panel cointegration test indicates there is a cointegration relationship in each group. The panel dynamic OLS is then used to obtain the cointegration coefficients. The misalignments derived from the non-stationary panel data are similar to those listed above. For example, the absolute value of the difference between the misalignment from the OLS estimation BEER and that from the dynamic OLS estimation BEER is mostly less than 0.05 in the common period. So they are omitted.⁴

In the end, a multi-currency realignment issue related to the misalignment results from the Penn effect and BEER models should be noted. That is, this paper uses the U.S. dollar as the benchmark, but the U.S. dollar itself may be over- or undervalued (against the equilibrium value), thus the bilateral misalignment of a currency against the U.S. dollar should be derived from the two currencies' misalignments (both against the equilibrium values); see Xu (2009, p. 444) or Chang (2012, p. 19) for details.

⁴ In addition, Isard (2007) and Dunaway et al. (2009) studied the robustness of equilibrium RER estimations. Actually, each conclusion derived from an econometric method, including but not confined to equilibrium RERs, may inevitably depend to some degree on the data, model specification, variable, and period used. The robust exercises, though tried in many different ways, are always limited. Therefore we do not give other possible robustness exercises.

4. Which model finding is more reasonable?

It can be seen easily that the misalignment results obtained from different models (Table 1) are different. For example, the RMB was overvalued by 91.1%, 43.3% and 39.4% in 1980 from the ratio, Penn effect and BEER models respectively; while it was overvalued by 20.5% and 11.4% from the ratio and BEER models respectively but was undervalued by 38.1% from the Penn effect model in 2012. Given the above different misalignments from the three models, we wonder which model finding is more reasonable.

4.1. Based on statistic index reasonability

One way to judge whether a model finding is more reasonable than the other is to see how close the calculated equilibrium RER is to its actual value (RER). This can be done by using the following two statistics: root mean squared error (RMSE) and mean absolute error (MAE). The two statistics have been used in the seminal paper by Meese and Rogoff (1983, p. 11), whose definitions can also be found in econometrics textbooks (e.g., Wooldridge, 2006, p. 661) and are given below. It should also be noted incidentally that there are some differences between the paper by Meese and Rogoff (1983) and this paper. Meese and Rogoff (1983) focused on the financial market, studied NERs, and compared structural models with the random walk and vector autoregression models (which have lagged explained variables as the explanatory ones). In contrast, in this paper, we focus on the macro-economy, study RERs, and only compare one structural model with other structural models (which do not have lagged explained variables as the explanatory ones). Just because all equations that we use are structural, the forecasting in this paper is, and has to be, static and in-sample.

$$RMSE = \sqrt{\sum_{t=T+1}^{T+h} (\widehat{RER}_t - RER_t)^2 / h} \quad (7)$$

$$MAE = \sum_{t=T+1}^{T+h} |\widehat{RER}_t - RER_t| / h \quad (8)$$

where \widehat{RER}_t denotes the RER's equilibrium (forecasted) value in period t .

For forecasting reasonability, we do not solely use the misalignments listed in Table 1, where the misalignments for the Penn effect and BEER models are obtained from one regression in 1980–2012 respectively, but use a method that is somewhat like the rolling regression used by Meese and Rogoff (1983). Concretely, we use the last eight years, 2005–2012, as the forecasting period. We first calculate the misalignment in 2005 using the data from 1980–2005, the misalignment in 2006 using the data from 1980–2006, and in the end the misalignment in 2012 using the data from 1980–2012. Then, for these misalignments, we calculate RMSE and MAE, which are listed in Table 4.

Table 4

Forecast error statistics for the three models in 2005–2012.

	Ratio	Penn effect	BEER
RMSE	0.202	0.242	0.069
MAE	0.199	0.241	0.064

Notes: The ratio, Penn effect and BEER models are defined in Eq. (2), Eq. (3) and Eq. (4) respectively. RMSE and MAE are defined in Eq. (7) and Eq. (8) respectively.

Sources: World Bank's World Development Indicators online database and the authors' calculation.

From Table 4, we can see that the values of RMSE decrease strictly from the Penn effect model (0.242) to the ratio model (0.202) and then to the BEER model (0.069), and those of MAE also give the same conclusion (from 0.241 in the Penn effect model to 0.199 in the ratio model and then to 0.064 in the BEER model). That is to say, the misalignment from the BEER model is the best, the misalignment from the ratio model is better, and the misalignment from the Penn effect model is the worst.

4.2. Based on economic meaning reasonability

Zhang (2012b) proposed a criterion for comparing misalignment results from different models based on a common sense of economics. Specifically, he argued that if a RER depreciates and the concluded degree of undervaluation (overvaluation) increases (decreases), or if a RER appreciates and the concluded degree of undervaluation (overvaluation) decreases (increases), the misalignment will be reasonable; otherwise, it will be less reasonable. In other words, in a reasonable misalignment result, the increase in the degree of undervaluation (overvaluation) corresponds to the depreciation (appreciation), and the decrease in the degree of undervaluation (overvaluation) corresponds to the appreciation (depreciation). For example, since the RMB RER depreciated greatly from about 0.7 in 1980–1981 to about 0.35 in 1992–1994, a misalignment that “the RMB was overvalued in 1980 and undervalued in 1992” is more reasonable than another misalignment that “the RMB was undervalued in 1980 and overvalued in 1992.” Here we use the misalignment classification comparison.⁵

We first sequence all the misalignments in each model (Table 1) from overvaluation to undervaluation. Then, we classify the misalignments from the ratio model into three types: greater than 70%, between 50%–70%, and less than 50%, and classify the misalignments from the Penn effect and BEER models into the same three types: greater than 10%, between –10% and 10%, and less than –10%. In the end, the corresponding averages of misalignments and of RERs are calculated, given in Table 5.

Table 5

Misalignment classification comparison for the three models.

Ratio		Penn effect		BEER	
Misalignment (Mis)	Average RER (US = 1)	Misalignment (Mis)	Average RER (US = 1)	Misalignment (Mis)	Average RER (US = 1)
Mis ≥ 70%	0.471	Mis ≥ 10%	0.556	Mis ≥ 10%	0.626
50% < Mis < 70%	0.409	–10% < Mis < 10%	0.398	–10% < Mis < 10%	0.479
Mis ≤ 50%	0.579	Mis ≤ –10%	0.467	Mis ≤ –10%	0.402

Notes: The ratio, Penn effect and BEER models are defined in Eq. (2), Eq. (3) and Eq. (4) respectively. The misalignments are calculated with $(\text{RER-equilibrium RER})/\text{RER}$. The average RER is the simple arithmetic average of real exchange rates.

Sources: WDI database and the authors' calculations.

According to the criterion of misalignment classification comparison, the average RER in overvalued (higher overvalued) observations should be greater than that in the undervalued (lower

⁵ When using his RER classification comparison, we divide the whole period into three sub-periods (1980–1986, 1987–2006 and 2007–2012), and the comparison result is like that listed here. Concretely, according to the RER classification comparison, both the ratio and Penn effect models are only partly reasonable in the whole period, but the BEER model is reasonable in the whole period.

overvalued) ones; otherwise, the finding will be concluded as not reasonable. In the ratio model, the average RER first decreases from 0.471 when $Mis \geq 70\%$ to 0.409 when $50\% < Mis < 70\%$ but then increases to 0.579 when $Mis \leq 50\%$. Therefore, the misalignment from the ratio model is only partly reasonable (reasonable in the period from $Mis \geq 70\%$ to $50\% < Mis < 70\%$ but not reasonable in the period from $50\% < Mis < 70\%$ to $Mis \leq 50\%$). The same conclusion can also be obtained in the case of the Penn effect model. However, in the BEER model, the average RER decreases strictly from 0.626 when $Mis \geq 10\%$ to 0.479 when $-10\% < Mis < 10\%$ and then to 0.402 when $Mis \leq -10\%$; the misalignment is reasonable. That is, the misalignment from the BEER model is reasonable, but the misalignments from the ratio and Penn effect models are only partly reasonable.

In conclusion, the statistic indexes (RMSE and MAE) and economic meaning (misalignment classification comparison) indicate that the misalignment from the BEER model is the best, the misalignment from the ratio model is somewhat better, and the misalignment from the Penn effect model is the worst. Further, based on the ratio and BEER models, the RMB RER was overvalued by about 10–20% (or more precisely, by 8–25%) in 2011–2012, which will be discussed in the next two sections (Sections 5 and 6).

However, the referee points out that, compared with the results from the Penn effect model, the misalignment resulting from the BEER model in 2006–2012 (Table 1) seems to be more changeable and unconvincing, varying for instance from -21.9% in 2007 to -5.3% in 2008 and from -0.1% in 2010 to 11.4% in 2012, which may be caused by the problem with the BEER model. First, as the referee points out, the changeable explanatory variable NFA may be a reason. For example, the NFA for Canada was always negative (from $-2.91E+10$ to $-5.38E+09$, in local currency, as below) before 1999, changed to be positive (from $4.37E+09$ to $1.25E+10$) in 2000–2008, but was blank in 2009–2012. The NFA for the UK in 2006–2012 was negative and positive mixed; the negative values ranged from $-7.54E+10$ to $-4.33E+10$ and the positive values ranged from $8.17E+09$ to $1.80E+11$. That is, the changeable NFAs in the sample countries would lead to the changeable misalignments in the BEER model. Second, the BEER model uses two explanatory variables but the Penn effect model only uses one, and the more explanatory variables would also make the misalignment results more changeable; see Dunaway et al. (2009).

5. What caused the RMB overvaluation in recent years?

In this section, let's analyze the factors that caused the RMB overvaluation (by about 10–20% based on the ratio and BEER models) in 2011–2012.

Table 6 shows the concrete changes for the RMB RER, NER, and PPP rate (all against the US) in 2003–2012, whose definitions are the same as in Eq. (1). We can see that in the last 10 years the RER has been appreciating, from 0.4 in 2003 to 0.66 in 2012. In 2011–2012, the RMB RER was overvalued by about 10% (based on the BEER model), which can be interpreted to say that the RMB has already excessively appreciated.

Table 6

RMB RER and relevant variables in 2003–2012.

Year	RER (US=1)	RER misalignment	PPP rate (yuan/US\$)	NER (yuan/US\$)	M2_China/ M2_US
2003	0.398	-29.7%	3.296	8.277	30.1%
2004	0.414	-30.1%	3.427	8.277	33.7%
2005	0.421	-31.4%	3.448	8.194	36.7%
2006	0.435	-27.6%	3.466	7.973	42.2%
2007	0.476	-21.9%	3.625	7.608	46.3%
2008	0.550	-5.3%	3.823	6.949	55.1%
2009	0.552	-1.9%	3.767	6.831	68.8%
2010	0.586	-0.1%	3.966	6.770	84.9%
2011	0.648	8.8%	4.186	6.461	98.0%
2012	0.660	11.4%	4.164	6.312	109.4%

Notes: RER and NER are the abbreviations of the real exchange rate and the nominal exchange rate respectively. The PPP rate is defined as the ratio of China's price level to the U.S. price level. The relationship among the three variables is $RER = (PPP \text{ rate})/NER$; see Eq. (1). The RER misalignment ($= (RER - \text{equilibrium RER})/RER$) is obtained from the BEER model. M2 of China (M2_China) and M2 of the U.S. (M2_US) are measured by the same currency, the U.S. dollar.

Sources: WDI database and the authors' calculations.

The direct reason for the overvaluation of RMB in 2011–2012 can be traced back to Eq. (1), where the RER is composed of two parts: PPP exchange rate and NER. In Table 6, we can see that both the PPP rate and NER have been appreciating since 2003. Concretely, the PPP rate rose from 3.3 (yuans per US dollar) in 2003 to 4.2 in 2012, and the NER appreciated from 8.3 (yuans per US dollar) in 2003 to 6.3 in 2012. Therefore, it was the continuous appreciation of both the PPP rate and NER in 2003–2012 that led to the appreciation of the RMB and then its overvaluation in 2011–2012.

What, then, caused the appreciation of the PPP and NER? According to the definition of PPP rate ($= P/P^*$), the appreciation of PPP rate is the result of the faster increase of P (China's price level) relative to P^* (the US's price level), which is further caused by the faster growth of the money supply in China than that in the US. Table 6 shows that the M2 of China had rapidly increased from 30% of the US in 2003 to more than 100% of the US in 2012. Another index, M2/GDP, also tells the same story. The M2/GDP in the USA was in the range of 70–90% in 2003–2012, while M2/GDP in China was in the range of 150–190% in the same period. As for the NER appreciation, it was mainly caused by the pressure from the US. The US government hopes, as some economists argue, that the RMB appreciation can obviously reduce the US's trade deficit and increase the US's employment; see Bergsten (2010). It is under this pressure, as a response, that China appreciated its NER from 8.3 in 2003–2004 to 6.3 in the end of 2012. In July 2013, the NER was 6.2, and the degree of appreciation was 25% $[= (8.3 - 6.2) / 8.3]$ or 34% $[= (8.3 - 6.2) / 6.2]$.

In conclusion, the direct reason for the RMB RER overvaluation in 2011–2012 is the continuous appreciation of the PPP rate and NER, and the deep reason is the faster growth of the monetary supply of China than that of the US, along with the appreciation pressure from the US.

6. Does the current overvaluation mean future depreciation?

6.1. Current economic situation related to the RMB's overvaluation

An overvalued currency may deteriorate external trade, decrease economic growth, lead to economic crisis, and result in great economic instability (Edwards, 1989; Alper and Civcir, 2012; Elbadawi et al., 2012). When examining China's economy, some similar things appear. As noted in the Introduction, the growth ratio of China's GDP decreased from 10.4% in 2010 to 9.3% in 2011 and 7.8% in 2012. The growth ratio of China's exports decreased from 32.3% in 2010 to 22.3% in 2011 and 9.1% in 2012. In the first half of 2013, China's GDP grew by 7.6% and exports grew by 10.4%; both decreased when compared with the same period in the last year.⁶ According to Liu and Jiang (2010, p. 30–34), two officials of China's National Bureau of Statistics, if the RMB appreciates by 3% annually, profit margin of export enterprises above designated size will decrease by 1.1% and they will have 20.4% drop in amount of profit amounting to 197.9 billion yuan. In 2009, there are 20,682 loss-making enterprises among 84 thousand export enterprises. If there is a 3% appreciation of the RMB, loss-making enterprises would increase to 39,591, which grows by 18,909 representing an increase of 91.4% before its appreciation. And the ratio of unprofitable enterprises will rise to 47.2% compared with 24.7% before the appreciation. The famous economist Yin-Wong Cheung, in studying the RMB exchange rate, stated in an interview in July 2012 that approximately 40% of SMEs have collapsed during the current rate of appreciation of RMB.⁷

For the current not-ideal situation, a bad foreign economic environment (especially that from the US and the Europe) may be a reason, but the continuous appreciated and already overvalued RER may be another reason. In addition, the political and government system, economic growth mode, employment, banking (and its relationships with local government bond issue and housing price bubble), and polarization between the rich and the poor all bring some hidden troubles to the future economic growth of China. Given this situation, the RMB should depreciate in the future in order to offer some help for the economy.

However, China has advanced its RMB internationalization in recent years. In July 2009, pilot projects for the use of the RMB in cross-border trade was started in five cities. Thereafter, the areas participating in the pilot settlement in cross-border trade were expanded to 20 provinces in June 2010 and then to the whole country in August 2011. Since 2008, China has signed currency swap deals with quite a number of countries to enable bilateral trade in the local currencies of the two countries.⁸ According to a report by Clifford Chance, the value of payments using RMB grew by 171% in a year, from January 2012 to January 2013; and the ranking of RMB as a payment currency jumped from 20th place to 13th place from January 2012 to March 2013, pushing it past currencies like the New Zealand dollar and the Russian rouble.⁹ Considering the RMB internationalization, the RMB should not depreciate; otherwise, foreigners will not accept it.

⁶ News release (in Chinese), available at

<http://cn.reuters.com/article/cnBizNews/idCNL4S0FL0H420130715?sp=true>. Accessed July 20, 2013.

⁷ A speech in a top talk on the reform of the Chinese renminbi exchange rate (in Chinese), available at <http://www.cnfinance.cn/articles/2012-07/07-15972.html>. Accessed October 10, 2013.

⁸ Renminbi internationalization (in Chinese), available at <http://baike.baidu.com/view/2099520.htm>. Accessed October 15, 2013.

The internationalization of the yuan, available at

<http://www.forbes.com/sites/jackperkowsky/2012/02/23/the-internationalization-of-the-yuan/>. Accessed October 15, 2013.

⁹ New developments accelerate Renminbi internationalisation, available at

http://www.cliffordchance.com/publicationviews/publications/2013/07/new_developmentsacceleraterenminb0.html. Accessed October 15, 2013.

6.2. Policy proposal

Given the conflicting demands from the economic slowdown and from the RMB internalization, we suggest that the policymakers (1) depress the too-fast rise of the domestic price level and (2) keep the NER stable (not appreciating it continuously as before).

As for the domestic price level, it has a relationship with the PPP rate ($= P / P^*$) and then with the RER ($= PPP / NER$). Table 6 shows that the PPP rate kept on appreciating in 2003–2012 (except in 2011–2012), which means that the rise of the price level of China was always faster than that of the US. By depressing the too-fast rise of the domestic price level, given the US price level, China can make the PPP rate appreciation slow down. This can partly decrease the fast appreciation of the RER. A direct measure to depress China's price level, following the discussion above in Section 5, is to control its money supply (not let its money supply grow so quickly). The price level rise of China (and thus the PPP rate) will slow down if the growth of its money supply slows down.

As for the NER, it is like a tax that the government exerts on its export enterprises. For example, after the RMB NER (yuans per US dollar) appreciated from 8.3 in 2004 to 6.2 in July 2013, one US dollar (the same amount of foreign income) exchanged for 2 yuan less in China's domestic market. It was as if the government exerted an additional 25% tax $[= (8.3 - 6.2) / 8.3]$ on export goods. Besides the NER appreciation, the rise of labor costs and material prices again squeezed the profit margins of export enterprises, which are mostly low value-added (such as numerous labor intensive ones in the Pearl River Delta). China's export enterprises have been hard hit by the above factors together with the deteriorating international environment. Therefore we propose that the NER should remain stable and that greater appreciation must be avoided. By keeping the NER level stable, the advances of RMB internationalization are not negatively influenced. At the same time, it will not drive the appreciation of the RMB RER.

7. Conclusion

We use three models (the ratio, Penn effect and BEER models) to value the RMB RER against the US dollar in 1980–2012. The ratio model is modified because of the great different national conditions between China and the US, while the Penn effect and BEER models are used in panel data settings. The statistical indexes (RMSE and MAE) and economic meaning (misalignment classification comparison) indicate that the misalignment from the BEER model is the best, the misalignment from the ratio model is somewhat better, and the misalignment from the Penn effect model is the worst. Concretely, based on the ratio and BEER models, the RMB RER was overvalued by about 10–20% in 2011–2012. This occurred, first, because far faster growth of M2 in China than that in the US has led to China's higher price level and then the appreciation of PPP rate. Second, the RMB NER kept on appreciating since 2005 because of the pressure from the US.

Since 2010 and especially in the first half of 2013, China's economic slowdown has demanded that its currency depreciate. But, simultaneously, China had greatly advanced RMB internalization in recent years, which demands that the RMB not depreciate. Actually, China has kept on appreciating its currency since 2005, both in nominal and real terms. Considering all these factors, we propose that the policymakers may not depreciate the RMB but must suppress the RMB's greater appreciation. To suppress the RMB RER appreciation too fast (and to avoid excessive overvaluation), policymakers should (1) control the excessive money supply to suppress the PPP rate appreciation and (2) keep the NER stable (not appreciating it continuously as before).

Acknowledgments

We thank Dr. Yi Wen and an anonymous referee for their comments and suggestions, which have greatly improved the paper. Langnan Chen is grateful for the financial support from the Natural Science Foundation of China under Urgent Project and Grant No. 70673116, the Guangdong Social Science Foundation under Grant No. GD10CYJ01, and the 985 Project Fund of Sun Yat-sen University. The authors take full responsibility for any errors or oversights.

References

- Alper, A. M., Civcir, I. (2012). Can overvaluation prelude to crisis and harm growth in Turkey. *Journal of Policy Modeling*, 34(1), 112–131.
- Balassa, B. (1964). The Purchasing-power parity doctrine: A reappraisal. *Journal of Political Economy*, 72(6), 584–596.
- Bayoumi, T., Faruqee, H., Lee, J. (2005). A fair exchange? Theory and practice of calculating equilibrium exchange rates. *IMF working paper* No. 229.
- Bénassy-Quéré A., Lahrèche-Révil, A. (2008). Is Asia responsible for exchange rate misalignments within the G20? *Pacific Economic Review*, 13(1), 46–61.
- Bergsten, C. F. (2010). Correcting the Chinese exchange rate: An action plan. Testimony before the Hearing on China's Exchange Rate Policy, Committee on Ways and Means, US House of Representatives, March 24.
- Bussière, M., Ca' Zorzi, M., Chudik, A., Dieppe, A. (2010). Methodological advances in the assessment of equilibrium exchange rates. *European Central Bank Working Paper* No. 1151.
- Chang, G., Shao, Q. (2004). How much is the Chinese currency undervalued? A quantitative estimation. *China Economic Review*, 15(3), 366–371.
- Chang, G. (2012). Theory and refinement of the enhanced-PPP model for estimation equilibrium exchange rates---With estimates for valuations of dollar, euro, yuan, etc.
Available at http://papers.ssrn.com/sol3/papers.cfm?abstract_id=1998477.
- Cheung, Y., Chinn, M., Fujii, E. (2010). Measuring renminbi misalignment: Where do we stand? *Korea and the World Economy*, 11(2), 263–296.
- Chinn, M. (2000). Three measures of East Asian currency overvaluation. *Contemporary Economic Policy*, 18(2), 205–214.
- Clark, P., MacDonald, R. (1998). Exchange rates and economic fundamentals: A methodological comparison of BEERs and FEERs. *IMF Working Paper* No. 98/67.
- Dunaway, S., Leigh, L., Li, X. (2009). How robust are estimates of equilibrium real exchange rates: The case of China. *Pacific Economic Review*, 14(3), 361–375.
- Edwards, S. (1989). Exchange Rate Misalignment in Developing Countries. *The World Bank Research Observer*, 4(1), 3–21.
- Égert, B., Halpern, L., MacDonald, R. (2006). Equilibrium exchange rates in transition economies: Taking stock of the issues. *Journal of Economic Surveys*, 20(2), 257–324.
- Elbadawi, I. A., Kaltani, L., Soto, R. (2012). Aid, real exchange rate misalignment, and economic growth in Sub-Saharan Africa. *World Development*, 40(4), 681–700.
- Frankel, J. (2006). On the yuan: The choice between adjustment under a fixed exchange rate and adjustment under a flexible rate. *CESifo Economic Studies*, 52(2), 246–275.
- Funke, M., Rahn, J. (2005). Just how undervalued is the Chinese renminbi? *The World Economy*, 28(4), 465–489.
- Garroway, C., Hacibedel, B., Reisen, H., Türkisch, E. (2012). The renminbi and poor-country growth. *The World*

- Economy*, 35(3), 273–294.
- Isard, P. (2007). Equilibrium exchange rates: Assessment methodologies. *IMF Working Paper* No. 296.
- Ito, T., Isard, P., Symansky, S. (1997). Economic growth and real exchange rate: An overview of the Balassa–Samuelson hypothesis in Asia. *NBER Working Paper* No. 5979.
- Kravis, I. B., Lipsey, R. E. (1982). Towards an explanation of national price levels. *NBER Working Paper* No. 1034.
- Liu, F., Jiang, Y. (2010). Impact of RMB appreciation on profit and employment of China's export enterprises. *Statistical Research*, 27(12), 30–34. (in Chinese)
- Lopez-villavicencio, A., Mazier, J., Saadaoui, J. (2012). Temporal dimension and equilibrium exchange rate: A FEER/BEER comparison. *Emerging Markets Review*, 13(1), 58–77.
- MacDonald, R. (1999). Exchange rate behaviour: Are fundamentals important? *The Economic Journal*, 109 (459), 673–691.
- Maeso-Fernandez, F., Osbat, C., Schnatz, B. (2006). Towards the estimation of equilibrium exchange rates for transition economies: Methodological issues and a panel cointegration perspective. *Journal of Comparative Economics*, 34(3), 499–517.
- Meese, R., Rogoff, K. (1983). Empirical exchange rate models of the seventies: Do they fit out of sample? *Journal of International Economics*, 14 (1-2), 3–24.
- Rogoff, K. (1996). The purchasing power parity puzzle. *Journal of Economic Literature*, 34(2), 647–668.
- Samuelson, P. (1994). Facets of Balassa-Samuelson thirty years later. *Review of International Economics*, 2(3), 201–226.
- Wooldridge, J. M. (2006). *Introductory Econometrics: A Modern Approach*. Third edition. Mason, OH: Thomson South-Western.
- Xu, Y. (2009). Relevant international experience of real exchange rate adjustment for China. *China Economic Review*, 20(3), 440–451.
- Yang, J. (2004). Nontradables and the valuation of RMB—An evaluation of the Big Mac index. *China Economic Review*, 15(3), 353–359.
- You, K., Sarantis, N. (2012). Structural breaks and the equilibrium real effective exchange rate of China: A NATREX approach. *China Economic Review*, 23(4), 1146–1163.
- Zhang, Z. (2012a). A simple model and its application in the valuation of eleven main real exchange rates. *International Research Journal of Finance and Economics*, (97), 55–59.
- Zhang, Z. (2012b). A comparison of the BEER and Penn effect models via their applications in the renminbi valuation. *International Research Journal of Finance and Economics*, (97), 138–154.