



Munich Personal RePEc Archive

The Impact of Recentralization on Public Services: A Difference-in-Differences Analysis of the Abolition of Elected Councils in Vietnam

Edmund Malesky and Cuong Nguyen and Anh Tran

15. August 2013

Online at <http://mpra.ub.uni-muenchen.de/54187/>

MPRA Paper No. 54187, posted 7. March 2014 08:12 UTC

The Impact of Recentralization on Public Services: A Difference-in-Differences Analysis of the Abolition of Elected Councils in Vietnam

Edmund J. Malesky
Associate Professor
Duke University
Department of Political Science
ejm5@duke.edu

Cuong Viet Nguyen
Researcher
National Economics University
Hanoi, Vietnam
c_nguyenviet@yahoo.com

Anh Tran
Assistant Professor
Indiana University Bloomington
School of Public & Env. Affairs
trananh@indiana.edu

Abstract: Comparative political economy offers a wealth of hypotheses connecting decentralization to improved public service delivery. In recent years, influential formal and experimental work has begun to question the underlying theory and empirical analyses of previous findings. At the same time, many countries have grown dissatisfied with the results of their decentralization efforts and have begun to reverse them. Vietnam is particularly intriguing because of the unique way in which it designed its recentralization, piloting a removal of elected People's Councils in ninety-nine districts across the country and stratifying the selection by region, type of province, and urban versus rural setting. We take advantage of the opportunity provided by this quasi-experiment to test the core hypotheses regarding the decision to shift administrative and fiscal authority to local governments. We find that recentralization significantly improved public service delivery in areas important to central policy-makers, especially in transportation, healthcare, and communications.

Acknowledgements: We are grateful to Jairo Acuna-Alfaro and the United Nations Development Program (UNDP) in Hanoi for sharing the respondent-level data for the Public Administration Performance Index Annual Survey. Early versions of this paper were presented at comparative politics seminars at Columbia University, University of Madison Wisconsin, University of California – San Diego, and Stanford University, and Duke University. The project was also presented at the Australia National University conference on Applied Microeconomics Research on Vietnam, the Freiburg University Conference on Methodologies for studying Southeast Asia, and the Brown University Conference on Subnational Politics. UNDP-Hanoi held a special session on the paper where comments were provided by representatives from Ministry of Home Affairs, the Vietnamese National Assembly's Institute for Legislative Studies (ILS), and the Da Nang Department of Home Affairs. We are grateful for helpful comments provided by Pablo Beramendi, Lisa Blaydes, Anna De Le O, Do Thi Thanh Huyen, Thad Dunning, Tullia Faletti, German Fierhard, Tim Frye, Scott Gelbach, Don Green, Marcia Grimes, Guy Grossman, John Huber, Horacio Larreguy, Xiaobo Lu, Melanie Manion, Brian McCaig, Yotam Margalit, Mike Munger, Tom Pepinsky, Nancy Qian, Ken Scheve, Gunther Schultz, Sarah Shair-Rosenfield, Dorothy Solinger, Lily Tsai, Christian Van Lubke, Jeremy Wallace, Jeremy Weinstein, Erik Wibbels, Steve Wilkinson, and Meng Xin. Replication data and materials will be posted on the authors' *Dataverse* websites (<http://thedata.harvard.edu/dvn/dv/emalesky>). All opinions and conclusions expressed herein are solely the responsibility of the authors.

In the past few decades, few comparative political economy debates have been as exciting as those concerning whether decentralization leads to greater public service delivery. The literature has offered a wealth of intriguing hypotheses connecting greater public participation, oversight, and accountability (often through elected councils) to a variety of local outcomes.¹ Although these studies have been highly influential for policy decisions and international aid activities (see World Bank 1994), more recent formal and experimental work has begun to question their underlying theory and empirical analyses (Treisman 2007). At the same time, many countries have grown dissatisfied with the results of their decentralization efforts and have begun to reverse them (Dickovick 2011). Unfortunately, the literature is ill suited to offer empirical predictions on recentralization efforts for two reasons: 1) recentralization is a new phenomenon and therefore is under-theorized; and 2) the extant literature on decentralization is fiercely contested, offering few findings that withstand theoretical and empirical scrutiny.

In this paper, we attempt to address these oversights by taking advantage of a unique quasi-experiment in Vietnam that sheds light on the effects of allocating authority to subnational governments. When Vietnamese leaders first began to consider the removal of District People's Councils (DPCs), the topic was hotly debated both within the Communist Party of Vietnam (CPV) and the Vietnamese National Assembly (VNA).² Advocates claimed that DPCs complicated decision-making by adding an extra node to policy design and implementation, which led to sustained hold-ups and extra costs in service delivery, infrastructure rollouts, and land conversion, all of which were necessary for economic development (TPCS 2009). Opponents contested the proposal on democratic grounds, arguing that the councils represented an important forum enabling citizens to check the power of leaders and rein in local corruption (CPV 2010). The dispute was contentious enough that Vietnamese officials followed a grand history of pilot programs in Marxist-Leninist regimes³ and confined the recentralization intervention to ten provinces (containing ninety-nine districts); this decision allowed them to observe the effects of DPC removal in a

¹ See Wibbels (2006), Bardhan and Mookerjee (2008), and Treisman (2007) for helpful reviews.

² Debates took place at the 5th Plenum of the CPV Central Committee 2008 and the 4th Session of the 12th VNA.

³ See Florini et al. (2012) for example.

contained setting before considering a full-scale rollout to Vietnam's other fifty-three provinces and national-level cities (National Assembly 2008).

What makes Vietnam particularly intriguing for researchers is the careful way in which it designed its recentralization experiment. To ensure that the conclusions were not rooted in the particular selection of provinces, officials stratified their selection by region, by urban versus rural, and by whether the province shared an international border (GSRV 2009). In addition, they made sure to include provinces that varied in their initial endowments, previous economic performance, and initial quality of public administration. Although not a randomized control trial (RCT), the research design ensured balance on a range of pre-treatment covariates between selected and non-selected locations. In other words, it is reasonable to consider the non-selected provinces a plausible control group for isolating the causal effects of recentralization.

We take advantage of this quasi-experiment to test the core hypotheses of decentralization in the literature. Our research design offers an overtime (diff-in-diff) analysis of real institutional change (not an artificial intervention) with a clearly identified counterfactual performed at scale within one country; this design allows us to hold constant the unobserved historical and cultural confounders that have limited previous work. As far as we know, this is the first-ever empirical analysis with clear control and treatment groups on the abolishment of an elected council affecting more than ten million people. The existing work on institutional change was conducted on a much smaller scale and involved NGO or multilateral donor projects rather than national governments' own initiatives and ownership.

Studying a large number of services helps us avoid the temptation to cherry-pick particular outcomes that confirm our hypotheses (Kramon and Posner 2012). We find that recentralization significantly improved a spectrum of public services that were considered important to central policy-makers, ranging from quality of roads to healthcare to the presence of post offices. By contrast, the intervention had no discernible effect on services deemed important by Vietnamese citizens (education, agricultural extension, and household business development).

In a more speculative final section of the paper, we study the causal mechanism through which the DPC pilot generated positive performances for services favored by central leaders. There are three candidate mechanisms that might explain these results, including the removal of vertical accountability to citizens and improved efficiency resulting from bureaucratic restructuring. We demonstrate that the most compelling explanation, however, is that the pilot unblocked elite capture of the policy-making process. As researchers have argued in other contexts, the purported benefits of decentralization for grassroots monitoring (Cheema and Rondinelli 1983; Huther and Shah 1998) can be undermined by local elites (politicians, businessmen, notables), who take advantage of their concentrated political resources to manipulate public decisions in their favor (Reinikka and Svensson 2004; Bardhan and Mookherjee 2006; Campos and Hellman 2005). We probe the observable implications of the elite capture mechanism through a nationally representative public opinion poll of 9,452 respondents (UNDP 2011), showing how recentralization reduced elite corruption in treatment districts.

1. The Literature on Decentralization

The past two decades have brought forth a rich debate in political science on the relative merits of locally elected governments. Camps of scholars and practitioners disagree on the theoretical benefits of granting authority to subnational units and the lessons learned from extant empirical work. At the same time, the rapid spread of decentralization worldwide, which at its peak led to elections of local governments in 90% of countries around the world (Rodden 2006), has subsided. A recent World Bank review of almost 500 studies reveals that the excitement about the benefits of locally elected bodies was not met by real-world improvements in outcomes (Mansuri and Rao 2013). As a result, Argentina, Brazil, Chile, Columbia, Uruguay, South Africa, and a number of other countries have started reversing some of these original decisions (Eaton 2004; Dickovick 2011). Vietnam is such a case.

Types of Decentralization

It is important to be clear from the start about where the Vietnamese DPC pilot fits into larger debates in the literature. The pilot involved a specific Vietnamese governmental unit (the second-tier district) and a specific body (the directly elected legislature). Scholars generally distinguish between modes of decentralization according to three considerations:

1) The arenas in which power has been granted to local authorities: *fiscal, administrative, or political* (Faletti 2010; Green 2005). A series of legal documents developed prior to the pilot provided DPCs with important fiscal authority (over budget allocation, approval, and implementation). DPCs also have the authority to elect and remove any member of the local executive (the District People's Committees (DPCOMs)), procuracies, and courts. In addition, they have oversight powers over all People's Councils and People's Committees of communes within their jurisdiction.⁴ Thus, there are elements of fiscal and administrative decentralization (Fforde 2003). The DPCOM was not removed in the pilot, however, so this is only partly administrative recentralization. National legislation on local governmental organization also claimed to influence political decentralization through the DPCs' universal election by district citizens, but this claim is contestable. In fact, a key feature of the debate in Vietnam has concerned the extent to which the DPC elections are actually democratic and the extent to which they provide downward accountability to citizens (Nguyen Anh 2010).

2) The extent of the power provided: *deconcentration, delegation, or devolution* (Cheema and Rondinelli 1983; White and Smoke 2005). Disentangling these three distinctions is tricky; most governments experience different types of decentralization at the same time (Grindle 2007). Nevertheless, it is fair to say that the DPCs, because they are under the hierarchal oversight of the Provincial People's Council (PPC) and the leadership of the CPV, are predominantly recipients of powers of delegation: their independent decision-making is highly circumscribed. The ongoing recentralization experiment essentially makes district leaders agents of the province and thereby reinstates deconcentration to the leaders of the treatment provinces. Following O'Donnell (1994), we can say that the move

⁴ See the Law on the Organization of Local People's Councils and Committees (2003).

toward recentralization has shifted oversight of DPCOMs from horizontal accountability by DPCs to upward accountability to provincial overseers.⁵

3) The level or node in the government hierarchy invested with authority: first tier (Rodden 2006), second tier (Bardan and Mookerjee 2008), or below. The Vietnamese DPC is a second-tier unit, as it is accountable to the provincial authorities above it and oversees the communes below it. What differentiates this study from previous work on subnational elections in single-party regimes (see Tsai 2007 and Martinez-Bravo et al. 2010) is that the district is an official part of the Vietnamese hierarchy, as opposed to the villages analyzed in China, which have very limited authority.

The Costs and Benefits of Decentralization

The literature on decentralization is rife with controversy. A strong theoretical literature linked to some of the most esteemed political thinkers has proffered a range of positive benefits to local engagement in politics. More recently, a formal economic literature has generated a series of positive hypotheses regarding public service delivery and economic performance.

Specifically, economists have argued that greater local authority in decision-making improves the efficiency of public service delivery, because government outputs can be provided in small units and tailored directly to local tastes (Oates 1972; Besley and Coate 2003). In addition, decentralization creates competition for capital and labor, leading to improved governance outcomes; brings decision-making closer to citizens; and limits the role of central government intervention in economic performance (Tiebout 1956; Inman and Rubinfeld 1997). Lab experiments by Walker et al (2000) and Kroll et al (2007) provide suggestive evidence for the link between direct democracy and efficient public good provision under ideal conditions. Furthermore, Hamman et al. (2011) find that democratic

⁵ Note that O'Donnell (1994) did not address upward accountability. He differentiated the horizontal accountability of institutions from vertical accountability to constituents.

delegation helps lab subjects avoid the free-rider problem and frequently achieve more efficient and equitable social outcomes. Similar results are also found in psychology experiments (e.g. Wilke et al. 1986)

As Wibbels (2006) notes, however, work in political economy has laid bare the underlying assumptions of decentralization theories (Weingast 1995) and in many cases has demonstrated that they are not met. Thus, the economic benefits of decentralization often fail to appear in practice (Prud'homme 1995). Citizens and entrepreneurs are often not fully informed about which level of government provides a particular service and therefore either cannot take advantage of relocation (Rodden and Rose-Ackerman 1997) or are simply limited in their mobility due to sticky labor markets and cultural differences within a country (Pepinsky and Wihardja 2011). Newly empowered local authorities may not have the needs of citizens at heart, and they may not understand local preferences better than their national counterparts (or than agents of the central government in the localities) (Cai and Treisman 2004; Treisman 2007). A number of scholars have found that there is actually no clear division of authority between the different nodes in a multi-tiered government (Bolton and Farrell 1990). As a result, service delivery may even be less efficient, as decisions and implementation are held up by different levels of government (Cox and McCubbins 1992; Treisman 2007) or by the loss of scale economies in provision as services are divided up too narrowly (Bardan and Mookherjee 2008). In the language of the discipline, decentralization increases the number of veto points in policy making, which biases toward status-quo policy choices and service provision (Tsebelis 2002) so that multiple levels of government jointly provide poor public goods (Volden 2005; Wibbels 2005). Correspondingly, a lab-in-field experiment by Grossman (2012) suggests that centralized decision-making (via democratic institutions) improves group outcomes.

Most importantly for our research, a subset of this literature has found that decentralization can actually facilitate capture of the policy-making apparatus by local elites, especially by wealthy notables and large enterprises, creating a company town atmosphere in which elections are undermined and policy is diverted to the benefit of the powerful at the expense of other citizens (Reinikka and Svensson 2004; Campos and Hellman 2005).

Drawing on these arguments, we test the following hypothesis:

H1: The removal of local councils will increase the efficiency of public service delivery.

Of course, recentralization may not have the same impact on all public services equally. More likely, recentralization may shift public services closer to the priorities set by the central government over those favored by the locality. Martinez-Bravo et al. (2010) demonstrate that village elections and increased downward accountability in China generated policy outcomes that were associated with local preferences. In this paper, we hypothesize that removing locally elected councils will have the opposite effect.

In general, we can group Vietnamese public services into three very broad categories. The first category includes transportation and communication infrastructure, such as local roads, public transport, post offices, radio, and television networks. The second category includes health and education services to citizens, such as preventive healthcare, health insurance, and local schools. The third category includes localized employment generation programs, such as household business support, agricultural extension, veterinary services, tax exemptions, subsidized credit, and the construction of market places.

The Vietnamese central government funds all categories of public services, but clearly gives top priority to infrastructure, followed by health and education. Following an economic model in which state companies control the leading national industries and give priority to large investors (both foreign and domestic), the central government has offered little support to private, household farms and businesses. This order of priorities was made clear in the 2001-2010 National Strategy for Socio-Economic Development (Central Committee 2000), which states:

“Infrastructure must move first to meet demands of socio-economic development as well as of national defense and security. The transport system is to be smooth and safe all the year round, and modernized. The rural transport network is to be expanded and upgraded. The dyke systems are to be fortified; the water conservancy systems developed and most of them solidified. Electricity, telephone, other basic postal and telecommunication services, dispensaries, solidly built schools, cultural and sports facilities are to be available to most communes. To ensure the basic physical conditions for primary and secondary

schoolchildren to learn all-day at school. To provide enough hospital beds to patients” (“Strategic Goals Section” 8-10).

The Strategy also emphasizes the leading role of government corporations (p. 10). The strategy discusses state-owned enterprises (SOEs) at eleven points, while it mentions small and medium enterprises only three times. Reducing agricultural output to 16-17% of the GDP and the employment rate to 50% of the total labor force are considered two of the state’s “strategic goals.” These priorities have been operationalized in many official documents, such as the National Five-Year Plan and the Action Plan of the Government.

Local citizens, however, seem to have a different order of priorities, according to Vietnamese responses in the *MyWorld* survey. Out of 16 items, Vietnamese citizens prioritized: education (76%), healthcare (62%), responsive government (51%), and job opportunities (45%). Better transportation and communications infrastructure ranked much further down the list: water and sanitation (32%), transport and roads (31%), and phone and internet access (15.4%).⁶ Further disaggregating preferences, health services are more frequently needed than educational services. The 2008 VHLSS shows that 68% of citizens report that their families use local health services, while only 38% of citizens report that their families use secondary schools. Thus, we expect:

H2. The removal of local councils will shift public service delivery toward the priorities set by the central government.

In particular, we expect that improvements in infrastructure for transportation and communication are more likely than those in health and education, which are favored by both the public and the central government, and far more likely than those in household farm and business support, areas in which the central government has demonstrated little interest.

⁶ See <http://data.myworld2015.org/> for details (see Online Appendix A for full results). The MyWorld survey is an online, self-selected platform that is rife with selection bias, but similar preference orderings can be seen an econometric analysis of the 2011 UNDP-PAPI survey (see Online Appendix B (attached below) for analysis)

Extant Empirical Analyses

In addition to the theoretical limitations of the decentralization hypothesis, the literature has also been sharply criticized for the quality of empirical evidence justifying the causal relationships hypothesized. Treisman (2007), for instance, devotes the entire eleventh chapter of his book to demonstrating the contradictory empirical findings, weak evidence, and lack of robustness of previous work. He summarizes his conclusions by quoting Litvack et al. (1998).

“Much of the discussion of decentralization reflects a curious combination of strong preconceived beliefs and limited empirical evidence.... It is not an exaggeration to say that one can prove or disprove almost any proposition about decentralization by throwing together some set of cases or data” (13).

Previous work generally falls into three categories. A large number of scholars have examined the decentralization process within individual countries both quantitatively and qualitatively, trying to derive generalizable conclusions from their studies. While this work has shed light on the particular forms of decentralization, these deep single-country studies have had difficulty establishing causality. In almost every case, decentralization occurs as a uniform policy, affecting every subunit of government at a particular level at the same time. Thus, there is no control group and no way to see the trajectory a subunit would have followed in the absence of the decentralization policy. This is particularly problematic because decentralization almost always occurs in the midst of other major institutional and policy reforms (democratization, economic opening, end of conflict). There is simply no way to hold constant the multiple policy, economic, and socio-cultural changes taking place at the same time that could generate the same causal outcome.

An alternative approach has been to leverage large cross-national datasets to search for patterns in the data. Do countries with greater amounts of authority invested to subunits demonstrate better economic performance, public service delivery, lower inequality, and better governance? Numerous studies have taken this approach, resulting in a wide range of diverse but often contradictory findings. Although most of the scholars behind these studies demonstrate great empirical savvy, their approach is ultimately hampered because decentralization is not

exogenously assigned across countries. States choose to decentralize for a variety of reasons: some hope to distance themselves from an authoritarian past (e.g. Indonesia); others hope to avoid civil conflict between regionally concentrated ethnic groups (e.g. Kosovo, the Czech Republic, and Russia (Hale 2004)); some face pressure from international financial institutions (Eaton 2004); some are accommodating electoral outcomes or the career aspirations of local officials (Grindle 2004); and still others expect economic benefits. If these decisions are correlated with the outcome variables, the underlying motivation may generate the causal outcome; decentralization may be just one of many policies symptomatic of the desire to achieve that goal.

A final strand of the literature has sought to test particular implications of decentralization using randomized controlled trials (RCTs) in which treatment is randomly assigned to a set of locations within a country, allowing the researcher to observe the effects of decentralization in the treatment group and compare the outcomes to a control group of similar units. This technique simultaneously resolves the problem of the missing counterfactual in the case-study literature and the unobserved heterogeneity in the cross-national literature, as the experiment takes place within one country and scholars know that the assignment of the treatment is orthogonal to any underlying economic conditions or cultural factors within that one country. This work is just in its infancy, but it has begun to yield findings that question the logic of decentralization. Olken (2007), for instance, has used RCTs in Indonesia to demonstrate that participation in village councils is not associated with reductions in corruption. Humphreys et al. (2006) use an RCT to study how participatory processes may be influenced and coopted by local leaders.

While RCTs such as these certainly represent a positive development in terms of their ability to isolate causal effects, on the question of decentralization they are often constrained by artificiality and political feasibility. “Accountability meetings” and comment cards designed to elicit community participation are often new innovations in the locations being researched. They did not preexist the experiment and will not continue afterward. Findings from studies like these therefore pose a challenge to government officials who are deciding to alter institutions with long histories in a given locality and impose a new set of institutional rules that citizens will perceive as permanent. It takes time for citizens to become accustomed to institutional processes, to learn how they work and how they can

best make use of them (Knight 1992). Moreover, the shadow of the future matters as well. The effort and time a citizen invests in using a new institution may be strongly related to how long he or she expects it to operate in his or her locality. Because of this, limited information can be drawn from mechanisms of decentralization that are only conceived and tested within the experimental setting. Another limitation of RCTs is that they are constrained to small settings, usually at the village level, by budget and political parameters. It is hard to imagine the political feasibility of an RCT trying to abolish a democratic institution at the district level, an experiment that could potentially affect millions of people.

Ideally, then, researchers need experiments put forward by governments themselves that seek to test the impact of real institutions currently existing in the country or institutions that will be employed if the experiment proves successful. Our study follows in this vein. In 2008, Vietnamese authorities sought to remove a local institution that had been enshrined in the 1992 Constitution and that had been empowered by a series of decentralization reforms thereafter. Because the removal was internally controversial and potentially unconstitutional, Vietnamese authorities chose to pilot the program in a limited sample, providing a unique opportunity to observe changes in treatment and control areas over time. We explore the motivation and selection processes for the recentralization pilot below.

2. DPCs and Vietnam's Government Hierarchy

Vietnam's government architecture has both horizontal and vertical dimensions. Horizontally, the system is separated into executive, legislative, and judiciary branches. Vertically, the system consists of the central, provincial, district, and commune levels (Figure 1 reproduced from Fforde 2003).⁷ The horizontal division is then replicated at each subnational level, so that branches of the executive (People's Committee), legislature (People's Council), and judiciary (People's Court/Procuracy) exist in every subnational unit in the country (Fforde 2003). Certainly, Vietnam is a single-party regime, so all government institutions are subordinate to the CPV at each level. In a combination of its French and Marxist-Leninist legacies, Vietnam follows a parliamentary system, which means that citizens vote to

⁷ Vietnam has 63 provinces and cities, 696 districts, and more than 11,000 communes.

elect their representatives in the legislative branch (National Assembly (NA) and People's Councils (PCs)), who in turn elect the leadership of the executive branch and appoint the heads of the judiciary branch. Citizens vote to directly elect each of these legislative bodies at national, provincial, district, and commune elections.

[Figure 1 about Here]

District People's Councils

Districts, the focus of this paper, are intermediate administrative units, lower than provinces in the government hierarchy and higher than communes.⁸ In terms of function, DPCs perform three major tasks: appointing district personnel, making district policies, and overseeing district authorities.

Under the first task, DPCs elect the executive branch of the district authority, which is the District People's Committee (often abbreviated as DPCOM to distinguish from the elected councils). DPCs maintain the authority to elect or dismiss the chairperson and all members of the DPCOM. Members of DPCs have the ability to formally question the Chairperson of the DPCOM, as well as the heads of the procuracy, courts, and other district offices during DPC sessions. Under the second task, DPCs approve annual socio-economic development plans, determine the district budget, and make district policies in most public policy areas, including infrastructure, agricultural extension, education, and healthcare. DPCs make decisions by passing resolutions, which are conducted through majority-rule votes. Under the last task, DPCs oversee all of the government offices of communes within their borders. This oversight task includes reviewing periodic reports, making queries, reviewing legal documents, making oversight visits, and conducting votes of confidence.

In terms of organization, DPCs have between 25 and 35 members, depending on the size of the district's population.⁹ Each includes one chairperson, one vice chairperson, and several standing members, all of whom work

⁸ The average district population is roughly 120,000 people.

⁹ This is stipulated by the 2003 Law on the Election of People's Councils. See also Fforde (2003).

for the DPC on a full-time basis as part of the standing committee. Other members work part-time for the DPC (i.e. participate in DPC meetings) and have separate full-time jobs. DPCs have very limited authority to raise revenue on their own; funding and resources for DPC operations come mainly from provincial government budgets.

Each DPC maintains a walk-in office, which is open daily to consider, receive, and respond to constituent requests. DPCs are expected to hold regular public meetings with constituents and report to them about the activities of the DPC and the District People's Committee. Because of these functions, opponents of DPC removal often present an idealized version of DPCs as bastions of democracy (Nguyen Anh 2010).

Limits on DPC Authority

It is important not to exaggerate the importance of DPCs, which operate in a highly constrained political environment. The true amount of downward accountability to voters is highly disputed. Vietnam remains a single-party regime, and candidates for public office are vetted by the CPV. While seats are contested by multiple candidates and turnout is high¹⁰ because voting is mandatory, it is not clear how much information Vietnamese citizens actually possess about the candidates or the district election process. In the 2011 UNDP-PAPI survey, only 5.8% of citizens could correctly answer all three basic questions on a civics test of which institutions were subject to elections and the length of officials' terms. 14.8% missed all three questions (UNDP-PAPI 2011). Rather than providing vertical accountability (O'Donnell 1994), low-quality elections and limited voter information allow DPCs to be captured by local elites who can nominate favored candidates for positions, manipulate candidate vetting in their favor, and use their informational advantage to make sure their choices are elected (Malesky and Schuler 2011). Because these same local elites are also represented on the DPCOM, the DPC has a very hard time fulfilling its oversight role of the local executive (Vu 2012, p19; Van Arkadie et al. 2010, p155). As Van Arkadie et al (2010)

¹⁰ The UNDP-PAPI (2012) found that 68% participated in the 2012 election, with 10% answering no, and 21% refusing to answer.

colorfully put it in a review of Vietnam's decentralization efforts, "Local government is seldom transparent; so that decentralization has sometimes seemed to have resulted in a kind of bureaucratic patrimonial localism (p185)."

Prior to the pilot, DPCs were considered to be paper tigers by most analysts of local governance (Kerkvliet 2004). As in China, DPC officials are generally party members and therefore must be accountable to party superiors in their district and province, which limits their decision-making authority (Whiting 2004). By convention, the district Party Secretary usually serves as Chair or Vice-Chair of the DPC as well, allowing the local party to influence DPC decision-making. In addition, full DPCs only meet twice a year and are represented by small standing committees when out of session. Finally, the DPC is only one of three assemblies that operate at the local level, so their initiatives must consider the framework imposed by Provincial PCs and anticipate the implementation of Commune PCs. Together, these limitations bias against finding a significant effect of the removal treatment.

Removal of DPCs

The idea of abolishing DPCs was proposed from the top down. In August 2007, the Central Committee of the CPV debated and passed Resolution 17-NQ/TW, directing the government to take stronger action regarding public and local government reform. The resolution pointed out the problems of the current public administrative system in Vietnam, and hinted that it was facilitating abuses, waste, and hold-up problems created by local leaders:

"Our public administration has many limitations and weaknesses... The functions and responsibilities of various bodies within the public administration system are vague, overlapping and missing; the state hierarchy is burdensome and inappropriate. The qualifications of the cadre and officials do not meet the requirements; red tape and waste are pervasive. Institutions and regulations for public finance management have many problems" (Central Committee of CPV 2007, p1).

One of the main solutions laid out in Resolution 17 was to abolish DPCs and simplify current district governments into provincial government administrative agencies for handling district tasks (p. 8-9). However, this solution faced considerable objection by the central government, VNA, local authorities, and mass media.

Opponents of this solution pointed out that DPCs are a key democratic institution for promoting the interests of local populations. Pham Minh Tuyen, Chairman of the National Assembly's Committee for Delegate Activities, asked: "Who would examine and keep checks on the administration at the same level? Wouldn't increasing members of the Provincial People's Council and increasing meeting times also add extra costs to the budget?"

Objections were also registered in the highest echelons of the political hierarchy, including by the Vice Chairman of the National Assembly, Nguyen Duc Kien (Nguyen Anh 2010).

On the other side of the debate, supporters of the removal emphasized the inefficiency and ineffectiveness of DPCs, claiming that the time, money, human resources, compromises, and impasses involved in DPC deliberations were considerable. Pham Phuong Thao, Chairwoman of the Ho Chi Minh City People's Council, estimated that the removal of each DPC in Ho Chi Minh City would save up to \$85,000 each year (Pham Thao 2008). Furthermore, Vietnam had four such representative bodies, raising the question of whether the cost of maintaining DPCs was justified by the benefits (Nguyen Thao 2010; Van Tat Thu 2010). Removal advocates pointed out that DPC functions could easily be handled by "upper and lower bodies" (Nguyen Thao 2010).

When resolution could not be reached in the debate, a consensus quickly emerged that the impact of DPCs was essentially an empirical question that should be addressed by experimentation.

3. Experimentation with DPC Removal

In December 2008, the National Assembly passed Resolution 26, allowing for the piloting of DPC removal. Given its paramount importance, the government created a National Steering Committee headed by the Prime Minister to coordinate this institutional experiment. Under the direction of the National Steering Committee, the Ministry of Home Affairs (MOHA) and various government agencies actively prepared for the launch of the policy experiment (GSRV 2009).

Selection of Treatment

MOHA was given the task of designing the pilot in order to “provide an objective and scientific evaluation of DPC removal (GSRV 2009, p1).” One of the key issues in the design was the selection of the treatment group. Researchers from MOHA conducted a series of workshops across the country to receive input from policymakers, social scientists, and the public. They then came up with a set of selection criteria, which they presented and on which they received feedback from line ministries and committees of the VNA. In January 2009, the government submitted a proposal to the VNA, which laid out four criteria for the selection of the treatment group:

1. The sample size of the treatment should be sufficient for scientific evaluation of impact.¹¹
2. The sampling should be stratified by region and subregion of the country.
3. The sampling should be stratified by city versus rural, lowland versus highland, midland versus internationally bordered land.
4. The sampling should be stratified by socio-economic and public administration performance.

Upon reviewing this proposal, the Standing Committee of the VNA passed Resolution 724, listing ten provinces (99 districts) in the treatment group, which had been selected according the four criteria above. The remaining 53 provinces (498 districts) would serve as the control group. Figure 2 demonstrates how the selection was stratified by subregion and national-level city.

[Figure 2 about Here]

While the MOHA researchers were careful, the experiment is certainly not an RCT. Consequently, it is important to assess whether the treatment and control groups are balanced on observable characteristics. Such information would provide tentative evidence that the selection criteria were exogenous to the outcomes and therefore that the intervention can be treated as a quasi-experiment (Dunning 2008).¹² Table 1 provides a balance

¹¹ The statistical power calculated by the Ministry of Home Affairs (MOHA) indicated that the treatment sample size should be around 16% of the total localities in the country (GSRV 2009).

¹² A more stringent test would consider whether the process approximates “as if” randomness and therefore can be considered a “natural experiment” (Dunning 2008).

table of 46 economic, natural, demographic, governance, infrastructural, and legal indicators, measured prior to the intervention. The first two columns show the simple means of the two groups in these indicators. Since national-level cities¹³ were oversampled to test whether the experiment was applicable in urban settings, they comprise 30% of the treatment group and only 4% of the control group. Consequently, the treatment provinces appear to perform better in several areas. When excluding national-level cities, however, the differences between the two groups virtually disappear.

[Table 1 about Here]

In addition to cities, MOHA also stratified their selection by region, so to ensure that each of the country's seven regions was represented (excluding the Central Highlands for security reasons). This makes it necessary to perform a true balance test within each region, as if analyzing an RCT with a stratification strategy. To this end, we regress these 46 indicators on the treatment dummy and control for two key criteria used for stratification (national-level city and region-fixed effect). Column 'P-treatment' in Table 1 reports the p-values of treatment in these 46 regressions and shows that the treatment is not significantly correlated with 45 of these characteristics. In other words, the balance between the treatment and control groups seems to be as good as in stratified randomization, at least in all observable dimensions.

Selection based on unobservables is a possibility, as MOHA may have selected leaders that were considered more pliant or more likely to implement successfully. Because of the approach, we can never know for certain, but we do test to see whether the treatment provinces differ on leadership questions used in the Vietnamese Provincial Competitiveness Index (PCI), an annual survey of 10,000 Vietnamese firms (Malesky 2009). These questions are included in the governance panel of Table 1. We find no evidence that the 2008 respondents thought their provincial leaders were better at working within the law, more creative and clever, or more likely to risk punishment than leaders of control provinces.

¹³ They are metropolises with the status of provinces: Treatment: (Hai Phong Da Nang, and Ho Chi Minh City); Control (Ha Noi and Can Tho).

Implementing the Pilot Intervention

Following Resolution 26 of the VNA, the Government and Ministries issued a series of documents guiding the DPC abolishment experiment. The 2004-2009 DPC term ended on April 25, 2009, and DPC elections were not held in experimental locations after this date. The existing personnel of DPCs had their responsibilities transferred to executive People's Committees in the same districts or provinces. The three existing functions of DPCs were transferred to different government bodies. The selection and dismissal of DPC personnel was assigned upward to Provincial People's Committees, which were also charged with appointing the new body. Policy-making and budget-approval functions were also transferred to the Provincial People's Committees. Finally, general oversight was transferred to the Provincial People's Councils. This transfer of power clearly implies that the nesting of districts within provinces will impact our ability to draw correct inferences, and that districts cannot be considered as independently drawn.

The abolition of the DPC system could have critical implications for public services and programs as well as for general wellbeing within each district. As we discuss in Section 1, the theoretical literature does not provide a clear guide as to whether this abolition would lead to improvement or deterioration of public services and governance at the district and commune levels.

4. Our Empirical Design

To analyze whether DPC abolishment improved public service delivery, we take advantage of a unique panel dataset that allows for a difference-in-difference (diff-in-diff) analysis on key outcome variables considered important by local and national leaders.

Data Source

To ensure reliable estimates of local performance over time, we use commune data from the three most recent Vietnam Household Living Standard Surveys (VHLSS) in 2006, 2008, and 2010. These surveys were conducted by

the General Statistics Office of Vietnam (GSO) with technical support from the World Bank. The 2006 and 2008 VHLSSs use the 1999 Population and Housing Census as a sampling frame, while the 2010 VHLSS uses the 2009 Population and Housing Census as a sampling frame.

The VHLSS has two components. The first is a stratified welfare survey of around 9,000 households. In addition, research teams are instructed to collect “hard data” from commune leaders and are provided a checklist to help gauge whether basic services are being met, such as whether or not the commune has a post office or an agricultural extension center. Information on commune characteristics was collected from 2,280, 2,219, and 2,199 randomly selected rural communes in the 2006, 2008, and 2010 surveys, respectively. Commune data includes information on commune demography as well as on general economic conditions and aid programs, non-farm employment, agriculture production, local infrastructure and transportation, education, health and health facilities, and social problems in the communes. Importantly, the commune dataset only includes rural communes, omitting the ward, the equivalent bureaucratic unit within cities. All analysis, therefore, only studies the impact of recentralization on rural localities using the hard data collected from communes.¹⁴

Estimation methods

To examine the effect of the removal of People’s Councils, we employ a difference-in-differences estimator and commune data from the 2008 and 2010 VHLSSs using the following specification:

$$Y_{it} = \alpha + T_t\beta + D_{it}\gamma + T_tD_{it}\theta + X_{it}\delta + \varepsilon_{it},$$

where Y_{it} is the outcome of rural commune i at time t . T_t is a dummy time variable that equals 1 for 2010 and 0 for 2008, the baseline year before the treatment commenced in 2009; the 2010 year is the follow-up year after

¹⁴ More technically, Vietnam divides communes into three categories: 1) rural communes (*xa*); 2) rural district capitals (*thi tran*); and 3) urban wards (*phuong*). Category 3 is not covered by the VHLSS rural data. Urban, however is a slippery concept and some peri-urban areas certainly sneak back into the sample in two ways. First, all five national-level cities include both wards and rural communes, which are more urbanized and densely populated than the average *huyen*. Secondly, *thi tran* can be highly developed and populated in some areas. Dropping peri-urban areas from the analysis does not alter our results.

treatment implementation. D_{it} is the treatment variable that equals 1 for communes that had their DPCs abolished and 0 otherwise. We interact T_t and D_{it} to produce the coefficient θ , which is the Average Treatment Effect (ATE) of the treatment on commune outcomes over time. X_{it} is a vector of control variables that are employed to capture minor imbalances in commune characteristics resulting from the fact that the VHLSS commune sampling strategy was not perfectly aligned with the DPC experiment.

The nested nature of the data poses a unique challenge. Communes can certainly not be treated as independent as they are clustered within districts, which control important financial and administrative decisions. The standard approach in such a situation is to cluster standard errors at the treatment level (the district), which will limit biases caused by the correlation of errors within a unit. The nature of the selection process, however, poses an additional conundrum. The selection of all districts within ten provinces (with only limited exceptions) implies an additional level of clustering that must be taken into account, especially as the district responsibilities had by that time been transferred upward to the provincial councils. To deal with this problem, we adopt the multiway clustering technique of Cameron et al. (2011), which allows us to address the correlation of errors among communes at both the district and provincial levels simultaneously.¹⁵

Choosing the appropriate dependent variable for the analysis is also not trivial. As Treisman (2007, Chapter 11) notes, the analyst's choice of variable for gauging public service delivery has critical implications for whether decentralization is deemed successful. Kramon and Posner (2012) lodge a similar complaint about the cherry-picking of dependent variables in analyses of redistributive politics. To avoid this temptation, we employ as many outcome variables as we can find in the VHLSS that meet two criteria: 1) They are in areas under the authority of DPCs according to the 2003 Law on the Organization of People's Councils and People's Committees (infrastructure, communication, public health, education, agricultural extension services); and 2) They are factors

¹⁵ Implemented using *STATA's* *ivreg2* procedure. In an even more conservative approach, we also re-run the core analyses only at the province level, as this is where selection occurred. This approach is risky because of the limited degrees of freedom provided by 58 provinces. Despite the limited precision of the estimates, however, we find similar results for all aggregate indices. Please see Online Appendix F for provincial-level results on aggregate indices.

that could possibly be altered by local leadership within the one-year time frame under investigation. For instance, measures of household wealth and productivity are available, but it is hard to imagine that district policies could radically alter the career choices and income streams of respondents within one year. We identify thirty outcome variables that fit these criteria, employing the exact same specification for all of them.¹⁶

As noted above, provincial selection was stratified, so treatments are representative of every region (except the Central Highlands) and national-level city by design.¹⁷ As suggested by Bruhn and Mackenzie (2009), we include dummy variables for regions and cities in order to ensure that these design choices do not lead to over-estimation of treatment effects. Other control variables include commune location and population density. It should be noted that control variables should not be affected by the treatment variable, i.e., the removal of the People's Councils in our case (Heckman et al. 1999; Angrist and Pischke 2008). Thus we limit control variables to more exogenous variables where minimal non-balance has been detected at the commune level. Our results are robust to eliminating these controls.

Table 2 presents the regressions of commune outcomes on time, treatment, and interaction between time and the treatment variable, as well as other control variables for the first seven of the selected outcome variables.¹⁸ We provide mean values of the dependent variable in 2008 in order to estimate the amount of room available for improvement. The highlighted row (*time*treatment*) depicts the ATE for our analysis. In this set of outcome variables, we find that the ATE was positive and statistically significant. For instance, all-year roads have grown 8.7% faster in the treatment than in the control group; public transportation has grown 10.2% faster. Of course, not

¹⁶ A listing of the exact wording used on the data collection instrument for each indicator is included in Appendix C2.

¹⁷ We dropped observations from the Central Highland regions, since the government did not conduct the experiment of the People's Council removal in this region. A dummy is needed for national-level city, as these predominantly urban metropolises also include rural districts (huyen) that are included in the VHLSS survey but have access to services that are different from rural districts in rural provinces.

¹⁸ Please see Online Appendix C1 for descriptive statistics for all independent and dependent variables used in the analysis. Online Appendix D provides the full set of thirty regression results.

all outcome variables were significant, but as Figure 3 shows, the experiment revealed a disproportionately high number of positive effects.

[Table 2 about Here]

In Figure 3, we present the ATE along with a 90% confidence interval. Intervals that do not cross the dashed line are significantly different from zero. ATE results are organized by type of public service. Here, we see that the effect of District People’s Council removal is statistically significant for 11 out of 30 outcomes (over one third!), nine of which are in a positive direction. Such a large number of significant findings would not be predicted by frequentist statistics, an inference to which we return below.

[Figure 3 about Here]

A few additional patterns emerge from careful inspection. The treatment appears to have been particularly successful at improving transportation infrastructure (road, public transport, and socio-economic projects), communication infrastructure (television broadcasting and post offices), and health care (assistance with fees and public health projects). Under the current law, DPCs have the authority to shape local policies and decisions in these sectors. The effects we find here suggest that removing such authority actually improves these public services. Most other outcome variables, particularly educational measures and agricultural extension, did not show significant improvement. On two outcomes, the treatment had a deleterious effect. Treatment provinces were less likely to have business credits and veterinary visits.

To probe these aggregate patterns more directly, we construct six additive indices for: 1) transportation infrastructure; 2) agricultural support services; 3) public health services; 4) education services; 5) communication infrastructure; and 6) support for household business development. The variables can be identified directly under the respective headings, which are capitalized in Figure 3. The indexing strategy is as conservative as possible, simply a sum of all the dichotomous measures. In a few cases, the variable under investigation is continuous (e.g. the share of households receiving credit). In these cases, we re-scale the variable to range between 0 and 1 and add it to the index. We then re-run the diff-in-diff analysis on the six additive indices. The results can be seen in Panel 1 of

Table 3. The results confirm H2. Removing DPCs definitely generated positive improvements for districts in areas that were of strategic importance to central leaders (infrastructure and public health). These results are quite substantial and statistically significant. In areas where citizens may have preferred more assistance, the treatment appears to have been less effective (agriculture, education, and household business development). While individual indicators prove significant in each one, these are undermined by lack of improvement in other areas.

<Table 3 About Here>

5. Robustness Tests

At first blush, the findings appear compelling and confirm that recentralization can improve the efficiency of public service delivery (H1), especially in arenas that are of explicit importance to the central government (H2). Nevertheless, the nature of selection and the implementation of the rollout pose a number of threats to validity. In this section we tackle these threats one by one: 1) *The Parallel Paths Assumption*; 2) *Spurious Correlation*; 3) *Motivated Interference by Central Officials*; and 4) *Hawthorne Effects*.

The Parallel Paths Assumption

The diff-in-diff estimator identifies the impact of the treatment under the assumption that the unobserved difference between the treatment and control groups is time-constant between survey rounds. In other words, we should not observe differential trending between treatment and control groups in the same direction as in the experiment in prior periods. We test this assumption by running diff-in-diff regressions using commune data from the 2006 and 2008 VHLSSs. The two surveys were conducted before the intervention in 2009, and therefore we should expect that the effect of the interaction between the time and treatment variables should not be statistically significant. The lower panel of Table 3 depicts the results of this analysis for the six aggregate indices,¹⁹ which confirm the assumptions of the model. Only two out of 30 outcome variables are significant and positive in the pre-treatment period. In only one case is the ATE for an index statistically significant, but it is in the wrong direction.

¹⁹ Full results for all thirty dependent variables are available in Online Appendix D.

Infrastructure was actually worse for treatment provinces before the removal of DPCs. For instance, road quality improved at a slower rate in treatment than control provinces between 2006 and 2008, so that treatment provinces were starting from a slight deficit at the time of the intervention. A few individual variables also demonstrate this pattern, but these deficits should only make it more difficult to identify effects of the treatment. Far more dangerous would be positive trending continuing into the experimental period, which would lead to bias in the treatment effect coefficient. We observe no such cases, however, indicating that pre-experiment trending in the treatment provinces did not contribute to the results observed in 2010.²⁰

Randomization Inference Test

Another empirical concern is that the effects of the treatment are simply the result of a lucky draw from the universe of possible outcome variables. In other words, a critic might conjecture that there is nothing special about the treatment at all. If we simply repeat the analysis post-hoc and randomly assign a “treatment” across the observed differences, 11 significant outcomes would be well within the range of possible outcomes.

To this end, we conduct a randomization inference test, where we perform 1000 Monte Carlo Simulations, randomly assigning an artificial treatment and then regressing outcome variables on our treatment with the exact same specification used above. Figure 4 presents the results of this analysis. Here, we show the number of total significant and significantly positive outcomes observed in the DPC experiment (long-dashed line), the pre-treatment 2006-2008 analysis (short-dashed line), and each Monte Carlo simulation. Notice that while the pre-treatment trends fall well within the range of significant outcomes that could be obtained by pure chance, the DPC experimental results were not reached in a single one of the 1000 simulations.²¹

[Figure 4 about here]

²⁰ Online Appendix E tests the parallel paths assumption using only provincial-level aggregates as well.

²¹ See Online Appendix G for further elaboration of this test.

The DPC experiment's positive effect on public service delivery cannot be brushed aside as pure coincidence. It seems quite clear that abolishing the elected council improved the efficiency-important set of public services, supporting H2.

Motivated Interference by Central Officials

Skeptics might argue that central officials wanted the experiment to be successful and, despite pretending to be careful about selection, actually manipulated the results by providing greater resources to the treatment group. This bias would explain the positive results but destroy our ability to draw theoretical inferences regarding the impact of recentralization. To test for such interference, we collect data on direct and indirect central transfers to each province between 2006 and 2012. If transfers diverged significantly between treatment and control groups over this period, this would provide strong evidence of elite manipulation of the experiment.

The results of this analysis are presented in Figure 5. Panel 1 presents the trend in total transfers *per capita* over time, where treatment provinces are depicted with straight lines and control provinces with dashed lines. Panels 2 and 3 divide overall transfers into non-targeted (or equalizing) transfers (to make up for local budget deficits) and targeted transfers for central government programs in infrastructure, poverty alleviation, and environment. Finally, Panel 4 depicts the share of provincial own-source revenue that the location is allowed to retain. Eleven wealthy provinces must share between 75% and 10% of own-source revenue with the central government, providing an implicit transfer that is embedded in the target amount. In all four cases, we can see clearly that control provinces received a greater share of resources *per capita* over the entire period under investigation, beginning in 2006 before the experiment and continuing afterward. While all four charts show increases in transfers after the experiment, there is no evidence at all suggesting that special treatment was given to treatment locations. A t-test provided in the legend provides additional confirmation, showing that treatment provinces did not receive statistically significant

increases in any form of transfers between 2008 and 2010. We also investigate a tranche of funds available to the Vietnamese Government for special projects to see if they were employed in a biased manner.²²

Vietnam also engages in indirect transfers to subnational governments through state-owned banks and centrally managed state-owned conglomerates (Pincus et al. 2012). State-owned banks do not release their lending portfolios, but it is commonly estimated that 70% of their loans go to SOEs (Malesky and Taussig 2009). Because we cannot access state-owned bank balance sheets, we rely on firm-level data from the GSO Enterprise Census over the research period. Using the annual census, we create measures of aggregate liabilities held by centrally managed SOEs in the province as a proxy for state bank lending in Panel 5. We also track ‘owner’ equity, which gives us a sense of the share of capital introduced to the SOE through the national budget in Panel 6.²³ We standardize both figures by nominal, provincial GDP. Treatment provinces do have larger average allocations of state lending and slightly higher owner equity over the research time period. There is no evidence, however, of disproportionate increases in these figures. In fact, liabilities in the control group actually grew at a faster rate after 2008.

<Figure 5 about Here>

Hawthorne Effects

A related concern is known as the Hawthorne effect, whereby a treatment group experiences gains not because of the experiment, but because they received special treatment and observation (French 1950). In the Vietnamese case, this may have come in the form of a special unit from the Ministry of Home Affairs (MOHA) observing progress. Fortunately, a limited budget prevented MOHA from evaluating all ten treatment provinces. Rather, they chose to evaluate and survey citizens from five treatment and five control provinces, allowing us to disentangle the effect of having central officials in suits roaming the province from the actual effects of DPC removal.²⁴

²² Results are available in Online Appendix K.

²³ In addition, we collect data on Central SOE investments, assets, and new construction outlays. These are presented in Online Appendix L. Results are very similar to these measures.

²⁴ The MOHA evaluation teams visited five treatment provinces (Lao Cai, Nam Dinh, Quang Tri, Da Nang, HCMC) and five control provinces (Yen Bai, Thai Binh, Quang Binh, Can Tho, Ha Noi). MOHA was careful to match these control locations on most descriptive characteristics. Each of the evaluation groups includes three

To test for Hawthorne effects, we replicate the analysis in Section 4 but with a slight twist – we impose a triple interaction of time, treatment, and whether the province received a MOHA delegation to survey citizens (*survey*). These results can be observed in Table 4. Panel 1 reports the regression coefficients. The first thing to notice is the interaction term (*time*treatment*), as this term represents the treatment effect without the contamination of MOHA visitors. Even though only five treatment provinces were surveyed, making statistical significance more difficult to achieve, the ATE remains sizable and positive for transportation, health, and communication. Moreover, it is still strongly significant for health and communication, indicating that MOHA visitors did not influence these results.

[Table 4 about Here]

Two further differences are critical for assessing whether Hawthorne effects inhibit the experiment. First and most important is the set of ten treatment provinces. If the provinces that received MOHA delegations within that treatment group significantly out-perform the non-treatment provinces, this would be evidence of bias. We can conclude that this is not the case. The coefficient on the triple interaction (*time*treatment*survey*), which is the effect of the survey in treated provinces, is not significant for all six indices. This indicates that the visit did not have any special effect on the final ATEs observed in Section 4. A secondary test involves comparing the control group that was surveyed to the control provinces that were not surveyed. If surveyed provinces outperform other control locations, this would be a cause for concern, as it would suggest that the visiting delegation generated additional effort from local leaders. Once again, we can rest assured that this is not the case.

Certainly, with such a small number of province-level units, statistical significance may not be particularly compelling. Consequently, we calculate the predicted effects for each of the cells generated by the experimental conditions in Panel 2 for the six aggregate indices. Probing further into the three indices where the DPC experiment appeared to be most effective (transportation, health, communication), we find that the score of the treatment

provinces and two national-level cities, and provinces are matched by region, including one province each from the Northern Mountains, Red River Delta, and North Central Coast.

group that did not receive a MOHA delegation is actually higher than that of the group that was visited. In other words, provinces that received a MOHA delegation did marginally worse, not better.

In sum, after repeated robustness tests, it is clear that the removal of DPCs had a significant impact on the delivery of public services that were most important to central officials. This is a surprising result that offers a useful corrective to the extant decentralization literature.

6. Testing the Causal Mechanism- Unblocking Political Capture

Three general mechanisms may explain the above results. First, DPC abolition may have reduced citizen influence over policies, allowing the center to drive through its favorite initiatives. A second basket of mechanisms can be grouped under the heading of bureaucratic restructuring possibly leading to efficiency improvements. DPC removal eliminated a key veto point in the implementation of central policies, but maintained other assemblies to capture citizen views. In addition, oversight of DPCOMs was shifted to provincial authorities, substituting upward accountability for horizontal accountability to the DPC. Third, DPC removal reduced capture of the decision-making process by local elites, who had exploited the extra veto point to hold up central programs in exchange for a share of the rents and demanded bribes from citizens trying to comply with regulatory procedures. The capture story combines elements of the first two mechanisms, as it requires imperfectly implemented local elections in the control group and bureaucratic restructuring in the treatment group that shifts accountability upward and unblocks decision-making.

Unfortunately, the research design was not fine-grained enough to reveal for certain which mechanism generated the underlying findings. In an ideal experimental setting, one could disentangle these mechanisms, but in this project, the fact that only one treatment occurred means we can only speculate. One way to advance the discussion, however, is to test the observable implications of the above mechanisms. Specifically, the diff-in-diff analysis generated a number of downstream puzzles: 1) Why did DPC removal expedite progress on central priorities without a discernible negative effect on policies favored by citizens? 2) Why was rapid progress made on

projects with relatively long gestation periods (i.e. all-year roads, post offices)? 3) Why was the achievement of control provinces worse on nearly all services than that of the pilot group, despite transfers to control provinces? Where did the money *not* spent on public services go?

Removal of vertical accountability to citizens cannot answer the first question. Control provinces should have had better performance on services favored by citizens; instead, we observe non-effects of the treatment on the aggregate indices and sporadic positive performance on individual indicators. Bureaucratic restructuring can answer the first two questions, but it provides only a partial answer to the third. Provincial oversight may reduce waste, but it does not answer the question of why the horizontal accountability of executives to DPCs in the control group was unsuccessful. In addition, we were unable to find evidence for two potential tracers of a pure bureaucratic restructuring story. The pilot did not appear to effect the distribution of service delivery among districts or the turnover of local leaders, as might have been expected from increased provincial authority over district policies.²⁵

One causal mechanism, however, provides an answer for all three puzzles – the elite capture mechanism. DPC removal did not impact progress on citizens’ service preferences because the DPCs in both treatment and control were not acting on behalf of voters in the first place. Policy was being directed to an elite group of local decision-makers. Rapid progress could be made on long-term projects, because capture was holding up implementation of central-level projects that were “shovel ready” (e.g. Chinh Trung 2011; Tri Tin 2013). They had already been decided upon at the highest levels and just needed local authorities to approve and pass the appropriate implementing documents. The conflict between local elites and central policymakers can be intense, dampening project implementation (Tuan Ngoc 2009) and public scrutiny of local projects (Nguoi Dua Tin 2012). A post-pilot report from the Da Nang People’s Committee (2012), for instance, credits reductions in decision delays and administrative expenses for improved service delivery. Finally, transfers were higher to control provinces without

²⁵ See Online Appendices I and J for regressions of public service inequality and leadership turnover on the treatment.

corresponding improvement on other public services because of corruption. Money was leaking out of the projects into the hands of district officials (Le Anh 2012).

The answer to the third puzzle provides an additional observable implication to study. If DPC removal unblocked elite capture of the policy-making apparatus, we should observe lower corruption in treatment provinces. There is both qualitative and quantitative support for this theory. As the VNA debate about DPCs was taking place, a joint team of foreign and Vietnamese experts showed that decentralization in Vietnam had been unsuccessful in terms of its stated goals (p. 18) and led to the uneven allocation of public services, particularly regarding infrastructure (p. 102) and healthcare (p. 144) (Van Arkadie et al. 2010). The report concluded that the main reason for the disappointing results was corruption, claiming that decentralization produced, “unaccountable and corrupt local institutions that respond inadequately to public needs” (183).

To study increased corruption quantitatively, we shift our attention to an alternative dataset. The UNDP-PAPI Survey (13,642 total respondents, 9,452 in rural districts) was specifically designed to measure quality of governance at the local level (UNDP 2011).²⁶ One battery of PAPI asks respondents to reflect on corruption in their locality. The questions look at multiple forms of petty bribery, but three questions in particular give us insight into the state capture mechanism: 1) Leaders’ diversion of state funds for personal use; 2) The use of kickbacks on government construction contracts; and 3) The necessity of bribery for obtaining government positions. The full wording for these questions is available in Table 5, where we study the difference between control and treatment groups in relation to their leaders’ behavior.

Because PAPI only surveyed the full set of provinces in 2011, we cannot perform a diff-in-diff analysis; rather, we simply look at the differences in the average effect between the control and treatment groups. As with VHLSS, we maintain regional and national-level city effects with a few exogenous controls for respondent-level covariates that could plausibly be correlated with outcomes (the sex, age, and ethnicity of each respondent, whether the respondent holds a government job, and individual wealth). To remain consistent with VHLSS analysis, we: 1) Drop

²⁶ See <http://www.papi.vn/about-papi> for a detailed description of the PAPI methodology.

all observations from the Central Highlands, which did not participate in the experiment; 2) Analyze only rural districts; 3) Employ regional and national-city dummy variables; and 4) Use robust standard errors, clustered at both the province and district levels. All results are robust to removing all control variables.²⁷

In Table 5, we present the results of the capture analysis. Responses are re-coded to create a dichotomous variable that combines “Agree” and “Somewhat Agree” into a single value of “Agree.” This facilitates interpretation and the use of a linear probability model.²⁸ The treatment is significantly associated with lower corruption in all three categories. In treated provinces, officials are 10% less likely to divert public funds, 8% less likely to expect kickbacks on corruption procurement, and 13% less likely to pay a bribe to obtain a government job. The results are a strong confirmation that recentralization, under the specific setting of a single-party authoritarian regime, can reduce local capture caused by imperfect elections.

[Table 5 about Here]

Because the PAPI is a single-shot survey of citizen perspectives, the above results cannot be subjected to the rigor of a diff-in-diff design. We address this limitation with a literal ‘nearest neighbor’ matching strategy, where we identify the two nearest districts across the border in non-treated provinces. We trim the control group to these proximate communes, providing greater balance on district characteristics. We report the results in Models 3, 6, and 9, finding that the results are actually strengthened by the more demanding approach.

Conclusion

Despite a fruitful decades-long theoretical debate, the literature on decentralization has stagnated in recent years as scholars have encountered a range of empirical problems rendering causal identification difficult, if not impossible. The Vietnamese pilot project to remove DPCs in ninety-nine districts nicely resolves these problems for

²⁷ As an initial step, we first test whether the two datasets are compatible by regressing a series of variables from the PAPI that capture the same public service delivery questions used in the VHLSS. The treatment is strongly associated with these variables, indicating that the public service findings are consistent across two completely independent datasets. Results are available in Appendix H.

²⁸ We make the transformation for presentation and consistency, but all results are robust to using OLS or an ORPOBIT on the three-point scale.

the following reasons: 1) It has a well-defined control group, allowing within-country comparison; 2) The timing of the experiment's introduction was exogenous to outcomes; and 3) The intervention involved a real-world institution that had existed as part of the polity since 1992. In short, it provides the ideal research design for studying the impact of subnational political and financial empowerment. Moreover, the experiment provides the first controlled analysis of recentralization, an institutional change that will likely become more common as the pendulum swings back from the misplaced euphoria of the mid-nineties. Our analysis reveals that the removal of Vietnamese DPCs significantly improved a wide range of public services that were favored by central authorities (roads, healthcare, and communications). Services favored by local citizens (education, agriculture, small business support), however, did not benefit from decentralization. Further analysis reveals that the most likely mechanism for the improved performance was that the pilot unblocked local capture of district policy-making, thereby releasing halted projects and reducing corruption. More generally, the capture result shows how imperfectly implemented local elections can ultimately undermine quality of governance and service delivery.

As in all projects, there are important limitations to generalizing from the Vietnamese experience. Selection of the treatment was not randomized, so unobserved targeting remains a possibility. The pilot took place in a single-party authoritarian setting that has traditionally struggled with local implementation of central initiatives. Thus, we are cautious about generalizing the findings to settings with truly democratic elections at the central or local level. Moreover, there are questions of the breadth of our conclusions. The pilot is still ongoing, and long-term effects may be different from the medium-term results we identify. Finally, there is potential for fallacy of composition – what may work in the pilot may not be true for all districts, especially as future recentralization forces the central government to make difficult decisions about the allocation of resources for public goods.

These limitations aside, however, this paper provides a positive advance in our understanding of recentralization in settings with imperfect local elections.

References

- Angrist, Joshua D. and Jorn-Steffen Pischke. 2008. *Mostly Harmless Econometrics: An Empiricist's Companion*. Princeton: Princeton University Press.
- Bardhan, Pranab, and Dilip Mookherjee. 2006 "Decentralisation and Accountability in Infrastructure Delivery in Developing Countries*." *The Economic Journal* 116.508: 101-127.
- _____. 2008. *Decentralization and Local Governance in Developing Countries: A Comparative Perspective*. Cambridge, MA: MIT Press.
- Besley, Tim and Stephen Coate. 2003. "Centralized Versus Decentralized Provision of Local Public Goods: A Political Economy Approach." *Journal of Public Economics* 87.12: 2611-37.
- Bolton, Patrick and Joseph Farrell. 1990. "Decentralization, Duplication, Delay." *Journal of Political Economy* 98 (4): 803-826.
- Bruhn, Miriam and David McKenzie. 2009. "In Pursuit of Balance: Randomization in Practice in Development Field Experiments." *American Economic Journal: Applied Economics* 1 (4): 200-232.
- Cai, Hongbin and Daniel Treisman. 2004. "State Corroding Federalism." *Journal of Public Economics* 88.3: 819-43.
- Cameron, A. Colin, Jonah Gelbach, and Douglas Miller. 2011. "Robust Inference with Multi-way Clustering." *Journal of Business and Economic Statistics* 29 (2): 238-249.
- Campos, Jose Edgardo and Joel S. Hellman. 2005. "Governance Gone Local: Does Decentralization Improve Accountability?" In *East Asia Decentralizes: Making Local Government Work in Asia*, edited by Roland White and Paul Smoke, 237-52. Washington, DC: World Bank.
- Central Committee of the Communist Party of Vietnam (CPV). 2007 "Resolution of the Fifth Plenum, Tenth Congress, on Strengthening public administration reform and improving management effectiveness and efficiency of the state machinery." August 1, 2007
http://dangcongsan.vn/cpv/Modules/News/NewsDetail.aspx?co_id=30668&cn_id=20930

- _____. 2000. "2001-2010 National Strategy for Socio-Economic Development." 2000.
<http://dangcongsan.vn/cpv/Modules/News/NewsDetail.aspx?co_id=30623&cn_id=26736>
- Cheema, G. Shabbir and Dennis Rondinelli, eds. 1983. *Decentralization and Development: Policy Implementation in Developing Countries*. Beverly Hills, CA: Sage Publications.
- Chinh Trung, 2011. "Chủ tịch thành phố phê bình 15 cơ quan "quên" báo cáo." [City Chairman criticizes 15 local authorities for "forgetting" to report]. *An Ninh Thủ Đức*. September 21. Accessed on July 3, 2013.
<http://www.anninhthudo.vn/Nha-Dat/Chu-tich-thanh-pho-phe-binh-15-co-quan-quen-bao-cao/415518.antd>.
- Cox, Gary W. and Matthew D McCubbins. 1992. "Divided Control of Fiscal Policy." In *The Politics of Divided Government*, edited by G. Cox and S. Kernell, 112-36. Boulder, CO: Westview.
- Da Binh. 2012. "Xây dựng nông thôn mới Khó khăn khi thực hiện tiêu chí số 6." *Binh Duong Online*, Accessed on June 7, 2012.
http://www.baobinhduong.org.vn/newsdetails/1D3FE1899C9/Kho_khan_khi_thuc_hien_tieu_chi_so_6.a_spx.
- Da Nang People's Committee. 2012. Report on the Implementation of the Experiment of Abolishing District and Commune People's Councils in Da Nang City.
- Dickovick, J. Tyler. 2011. *Decentralization and Recentralization in the Developing World*. University Park: Pennsylvania State University Press.
- Dunning, Thad. 2008. "Improving Causal Inference Strengths and Limitations of Natural Experiments." *Political Research Quarterly* 61.2: 282-293.
- Eaton, Kent. 2004. *Politics beyond the Capital: the Design of Subnational Institutions in South America*. Stanford, CA: Stanford University Press.
- Falleti, Tulia G. 2010. *Decentralization and subnational politics in Latin America*. Cambridge University Press.

- Fforde, Adam A. 2003. “Decentralization in Vietnam—Working Effectively at Provincial and Local Government Level –A Comparative Analysis of Long An and Quang Ngai Provinces. Australian Agency for International Development.” Accessed Jan. 4, 2013.
http://www.aisaid.gov.au/Publications/Documents/decentralisation_vietnam.pdf.
- Florini, Ann M., Hairong Lai, and Yeling Tan. 2012. *China Experiments: From Local Innovations to National Reform*. Brookings Institution Press.
- French, John R. P. 1950. “Field Experiments: Changing Group Productivity.” In *Experiments in Social Process: A Symposium on Social Psychology*, edited by James G. Miller, 82-97. New York: McGraw-Hill.
- General Statistical Office (GSO, 2006-2011) -*Enterprise Census 2006 to 2011 Datasets* <
http://www.gso.gov.vn/default_en.aspx?tabid=479&idmid=5>
- General Statistical Office (GSO, 2006, 2008, 2010). “Vietnam Living Standard Survey Datasets”
 < http://www.gso.gov.vn/default_en.aspx?tabid=483&idmid=5>
- Government of the Socialist Republic of Vietnam (GSRV). 2009. “Report on the Draft of the solution of the Standing Committee of the National Assembly on the list of districts, communes and wards experimented with the abolishment of people’s councils.” January 2, 2009.
- Green, Amanda. 2005. “Managing Human Resources in a Decentralized Context.” In *East Asia Decentralizes: Making Local Government Work in Asia*, edited by Roland White and Paul Smoke, 129-155. Washington DC: World Bank.
- Grindle, Merilee S. 2007. *Going Local: Decentralization, Democratization, and the Promise of Good Governance*. Princeton, NJ: Princeton University Press.
- Grindle, Merilee S. 2004. *Despite the Odds: The Contentious Politics of Education Reform*. Princeton, NJ: Princeton University Press.
- Grossman, Guy and Delia Baldassarri. 2012. The Impact of Elections on Cooperation: Evidence from a Lab-in-the-Field Experiment in Uganda. *American Journal of Political Science*. 56(4):964-985.

- Hale, Henry. 2004. "Divided We Stand: Institutional Sources of Ethnofederal State Survival and Collapse." *World Politics* 56 (January): 165-93.
- Hamman, John R., Roberto A. Weber and Jonathan Woon. 2011. "An Experimental Investigation of Electoral Delegation and the Provision of Public Goods." *American Journal of Political Science* 55(4): 738-752.
- Heckman, James, Brad Lalonde, and James Smith. 1999. "The Economics and Econometrics of Active Labor Market Programs." In *Handbook of Labor Economics, Volume 3*, edited by A. Ashenfelter and D. Card. Amsterdam: Elsevier Science: 1865-2907.
- Humphreys, Macartan, William A. Masters, and Martin E. Sandbu. 2006. "The Role of Leaders in Democratic Deliberations: Results from a Field Experiment in São Tomé and Príncipe." *World Politics* 58 (July): 583-622.
- Huther, Jeff and Anwar Shah. 1998 "Applying a Simple Measure of Good Governance to the Debate on Fiscal Decentralization." Washington DC: World Bank.
- Inman, Ruben and David Rubinfeld. 1997. "Rethinking Federalism." *Journal of Economic Perspectives* 11.4 43-64.
- Kerkvliet, Benedict J. 2004. "Surveying Local Government and Authority in Contemporary Vietnam." In *Beyond Hanoi: Local Government in Vietnam*, edited by Benedict J. Tria Kerkvliet and David G. Marr, 1-27. Singapore and Copenhagen: ISEAS Publications and NIAS Press.
- Knight, Jack. 1992. *Institutions and Social Conflict*. New York: Cambridge University Press.
- Kramon, Eric and Daniel Posner. 2012. "Who Benefits from Distributive Politics? How the Outcome One Studies Affects the Answer One Gets." MIT Unpublished Manuscript.
- Kroll, Stephan, Todd L. Cherry, and Jason F. Shogren. 2007. "Voting, Punishment, and Public Goods." *Economic Inquiry* 45: 557-70.
- Le Anh 2012. "Tạm đình chỉ sinh hoạt Đảng Phó Chủ tịch HĐND xã AnTrung" [Party membership suspension for Vice-Chair of An Trung Commune People Council]. *Bao Gia Lai*. Accessed on July 3, 2013.

<http://baogialai.com.vn/channel/8301/201207/Tam-dinh-chi-sinh-hoat-dang-Pho-Chu-tich-HdNd-xa-anTrung-2172021/>.

Litvack, Jennie, Junaid Ahmad, and Richard Bird. 1998. *Rethinking Decentralization in Developing Countries*. Washington, D.C: World Bank.

Malesky, Edmund. 2009. "The Vietnam Provincial Competitiveness Index: Measuring Economic Governance for Private Sector Development." 2009 Final Report, Vietnam Competitiveness Initiative Policy Paper 13. Hanoi: US AID's Vietnam Competitiveness Initiative and Vietnam Chamber of Commerce and Industry. Data and Codebooks Available at <www.pcivietnam.org>.

_____ and Markus. Taussig. 2009 "Where Is Credit Due? Legal Institutions, Connections, and the Efficiency of Bank Lending in Vietnam." *Journal of Law, Economics, and Organization* 225 (2), 535-578.

_____ Paul Schuler. 2011. "The Single-Party Dictator's Dilemma: Information in Elections without Opposition." *Legislative Studies Quarterly* 36.4: 491-530.

Mansuri, Ghazala and Vijayendra Rao. 2013. "Localizing Development: Does Participation Work?" World Bank: Washington, DC.

Martinez-Bravo, Monica, Gerard Padro-i-Miquel, Nancy Qian, and Yang Yao. 2010. "Accountability and Growth: The Costs of Village Democracy in China." Yale University and NBER Working Paper.

Ministry of Finance. 2006-2012. State Budget of Vietnam. Ministry of Finance 2006 to 2012 – State Budget <http://mof.gov.vn/portal/page/portal/mof_en/State_Budget> Accessed Feb. 19, 2013.

National Assembly of the Socialist Republic of Vietnam. 2003. "Law on the Organization of People's Councils and People's Committees."

_____. 2008 "Resolution #26 on the experiment of abolishing the people councils in districts and wards." December 2008.

_____. 2009 "Resolution #274 on the list of districts, communes and wards experimented with the abolishment of people's councils." January 16, 2009.

- Ngươi Dưa Tin 2012. “Dự án nội bộ, anh em báo chí không nên vào” [It’s an internal project. The media should not pay attention]. *Ngươi Dưa Tin*. December 27. Accessed on July 3, 2013. <http://www.nguoiduatin.vn/du-an-noi-bo-anh-em-bao-chi-khong-nen-vao-a12981.html>.
- Nguyen, Anh Van. 2010. “Chưa vội bỏ hội đồng nhân dân trong cả nước” [No rush to remove the People’s Councils of the country]. *VietNamNet*. September 18. Accessed on June 6, 2013. <http://vnn.vietnamnet.vn/chinhtri/201009/Chua-voi-bo-hoi-dong-nhan-dan-trong-ca-nuoc-936324/>.
- Nguyen Thao. 2010. “Phải hỏi ý kiến dân khi bỏ hội đồng nhân dân” [Asking citizens to remove the People’s Council]. *VnEconomy*. September 11. Accessed on June 6, 2012. <http://vneconomy.vn/2010091104313041P0C9920/phai-hoi-y-kien-dan-khi-bo-hoi-dong-nhan-dan.htm>.
- Oates, Wallace E. 1972. *Fiscal Federalism*. New York: Harcourt Brace Jovanovich.
- O'Donnell, Guillermo A. 1994. "Delegative democracy." *Journal of democracy* 5.1: 55-69.
- Olken, Benjamin A. 2007. “Monitoring Corruption: Evidence from a Field Experiment in Indonesia.” *Journal of Political Economy* 115 (2): 200-250.
- Pepinsky, Thomas B. and Maria M. Wihardja. 2011. “Decentralization and Economic Performance in Indonesia.” *Journal of East Asian Studies* 11 (3): 337-371.
- Pham Phuong Thao. 2008. “Quốc hội thảo luận Đề án thí điểm không tổ chức HĐND quận, huyện, phường và nhân dân trực tiếp bầu Chủ tịch UBND xã: Chủ trương đúng và thực sự cần thiết.” [Parliament discusses pilot scheme, as to whether directly elected people’s councils are necessary.] *Bao Dien Thu*. July 11. Accessed on Jan. 3, 2013. <http://baodientu.chinhphu.vn/Utilities/PrintView.aspx?ID=6482>.
- Pincus, J., V. T. T. Anh,, P. D. Nghia, B. Wilkinson, and N. X. Thanh. 2012. *Structural reform for growth, equity and national sovereignty*. Ho Chi Minh City: Fulbright Economics Teaching Program Discussion Papers. <http://www.fetp.edu.vn/en/policy-papers/discussion-papers/>.
- Prud'homme, Remy. 1995. “The Dangers of Decentralization.” *The World Bank Research Observer* 10 (2): 201-20.

- Reinikka, Ritva and Jakob Svensson. 2004. "Local Capture: Evidence from a Central Government Transfer Program in Uganda." *Quarterly Journal of Economics*. 119 (May): 679-705.
- Rodden, Jonathan and Susan Rose-Ackerman. 1997. "Does Federalism Preserve Markets?" *Virginia Law Review* 83: 1521-72.
- Rodden, Jonathan. 2006. *Hamilton's Paradox*. New York: Cambridge University Press.
- Tiebout, Charles. 1956. "A Pure Theory of Local Expenditure." *Journal of Political Economy* 64: 416-24.
- Treisman, Daniel. 2007. *The Architecture of Government: Rethinking Political Decentralization*. New York: Cambridge University Press.
- Tsai, Lily. 2007. "Solidarity Groups, Informal Accountability, and Local Public Goods Provision in Rural China." *American Political Science Review* 101 (2): 355-372.
- Tsebelis, George. 2002. *Veto Players: How Political Institutions Work*. New York and Princeton: Russel Sage Foundation and Princeton University Press.
- Tuan Ngoc. 2009. "Kỷ luật chủ tịch thị trấn thuê côn đồ đánh cấp dưới" [Penalizing District Chairman for hiring gangsters to hit subordinates]. *Dan Tri*. August 5. Accessed on July 3, 2013. <http://dantri.com.vn/phap-luat/ky-luat-chu-tich-thi-tran-thue-con-do-danh-cap-duoi-341881.htm>.
- Tri Tin 2013. "Chậm xử lý 'thôn 4 chợ tiền tỷ', lãnh đạo huyện đối mặt kỷ luật" [District leaders are disciplined if slow in constructing 4 markets, each is worth billions of dong]. *Vnexpress*. July 1. <http://vnexpress.net/tin-tuc/xa-hoi/cham-xu-ly-thon-4-cho-tien-ty-lanh-dao-huyen-doi-mat-ky-luat-2841197.html>.
- United Nations Development Program with Cecodes, the Vietnam Fatherland Front, and the Commission on People's Petitions for the Standing Committee of the National Assembly. 2011. "The Viet Nam Provincial Governance and Public Administration Performance Index (PAPI) 2011: Measuring Citizens' Experiences." CECODES, FR, CPP, and UNDP (2011). *The Viet Nam Governance and Public Administration*. Ha Noi, Viet Nam: UNDP.. Data Available at <<http://www.papi.vn/node/93>>.

- Van Tat Thu. 2010. "Rationale and practical implementation of the organization's council districts, wards." *Tap Chi Cong San* [Communist Review]. 10.3 November 30. Accessed on January 4, 2013.
<<http://www.tapchiconsan.org.vn/Home/Nghiencuu-Traodoi/2010/3615/Co-so-ly-luan-va-thuc-tien-thuc-hien-khong-to-chuc.aspx>>.
- Van Arkadie, Brian, Jonathan D. London, Pham Thi Lan Huong, Tran Thi Hanh, Khuat Thi Hai Oanh, Do Nam Thang, and Dang Kim Khoi. 2010. "Joint Country Analysis: Development Challenges in a Middle-income Viet Nam." Hanoi: United Nations.
- Volden, Craig. 2005. "Intergovernmental Political Competition in American Federalism." *American Journal of Political Science* 49.2: 327-42.
- Vu Thanh Tu Anh. 2012. "Decentralization of Economic Management in Vietnam from Institutional Perspectives." *Fulbright Economics Teaching Program Policy Discussion Paper*. HCMC, Vietnam, December 31.
- Walker, J. M., Roy Gardner, Andrew Herr and Elinor Ostrom 2000. "Collective Choice in the Commons: Experimental Results on Proposed Allocation Rules and Votes." *The Economic Journal* 110(460): 212-234.
- Weingast, Barry. 1995. "The economic role of political institutions: market-preserving federalism and economic growth." *Journal of Law, Economic and Organization* 11 (1): 31.
- White, Roland, and Paul Smoke. 2005. "East Asia Decentralizes." In *East Asia Decentralizes: Making Local Government Work in Asia*, edited by Roland White and Paul Smoke, 1-24. Washington DC: World Bank.
- Whiting, Susan. 2004. "The Cadre Evaluation System at the Grassroots: The Paradox of Party Rule." In *Holding China Together*, edited by Barry Naughton and Dali Yang, 101-119. New York: Cambridge University Press.
- Wibbels Eric. 2005. *Federalism and the Market: Intergovernmental Conflict and Economic Reform in the Developing World*. New York: Cambridge University Press.
- . 2006. "Madison in Baghdad? Decentralization and Federalism in Comparative Politics." *Annual Review of Political Science* 9: 165-88.

- Wilke, H. A. M., Rutte, C. G., Wit, A. P., Messick, D. M., & Samuelson, C. D. 1986. "Leadership in social dilemmas: Efficiency and equity." In H. A. M. Wilke, D. M. Messick, & C. G. Rutte (Eds.), *Experimental social dilemmas* Frankfurt: Peter Lang: 55-76.
- World Bank. 1994. *Making Services Work for Poor People. World Development Report*. Washington, DC: World Bank.
- Xuan Long. 2012. "Hà Nội phê bình 18 quận, huyện" [Hanoi criticizes 18 districts]. *Tuoi Tre*. March 2. Accessed on July 3, 2013. <http://m.tuoiitre.vn/chuyen-trang/Dia-oc/Nha-dat/104116,Ha-Noi-phe-binh-18-quan-huyen.ttm>.

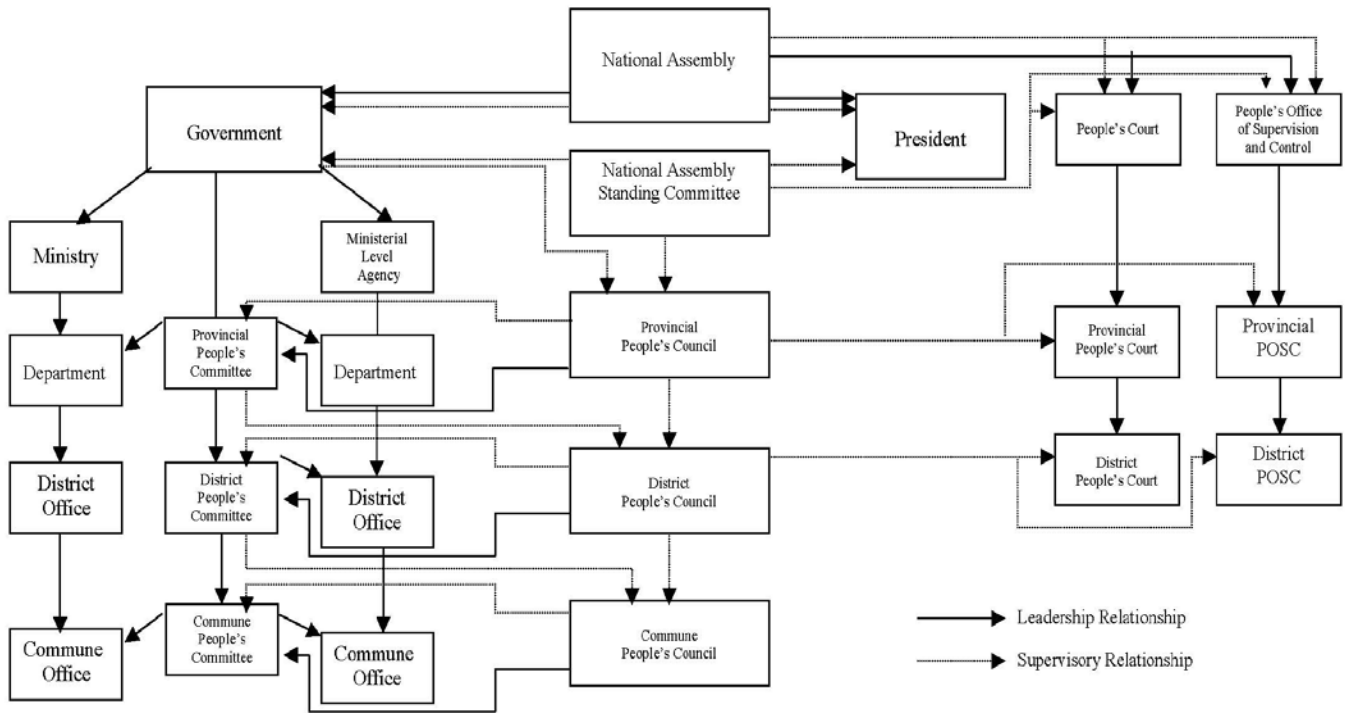


Figure 1: Organization of the Vietnamese Political System Based on the Revised 1992 Constitution

According to Fforde (2003), a leadership relationship means the superior body provides formal direction and/or appoints the leadership. A supervisory relationship implies that the lower body must report to and receive guidance from the superior institution. *Source: Reproduced from Fforde (2003).*

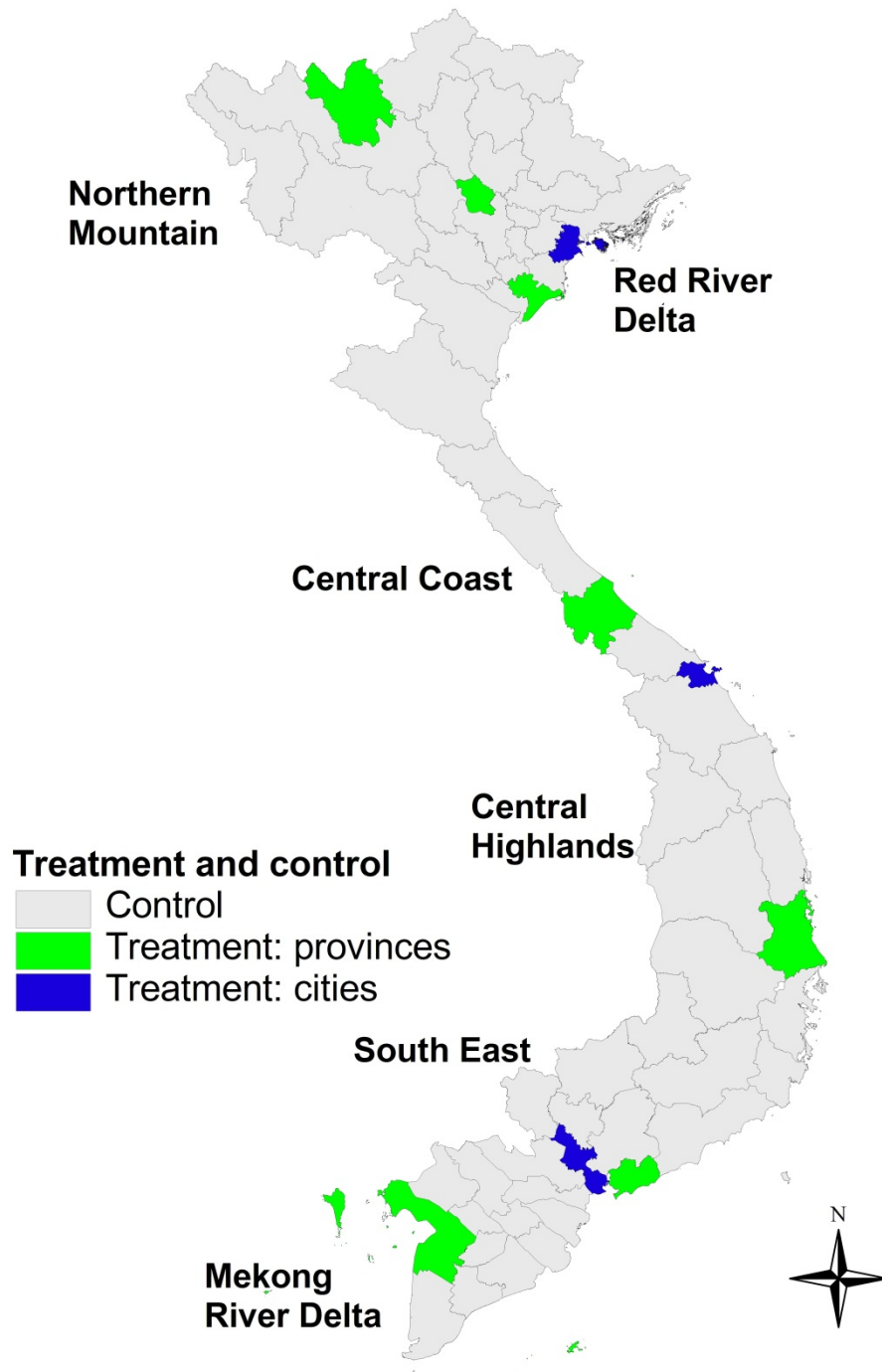


Figure 2: Map of Treatment Provinces and National-Level Cities

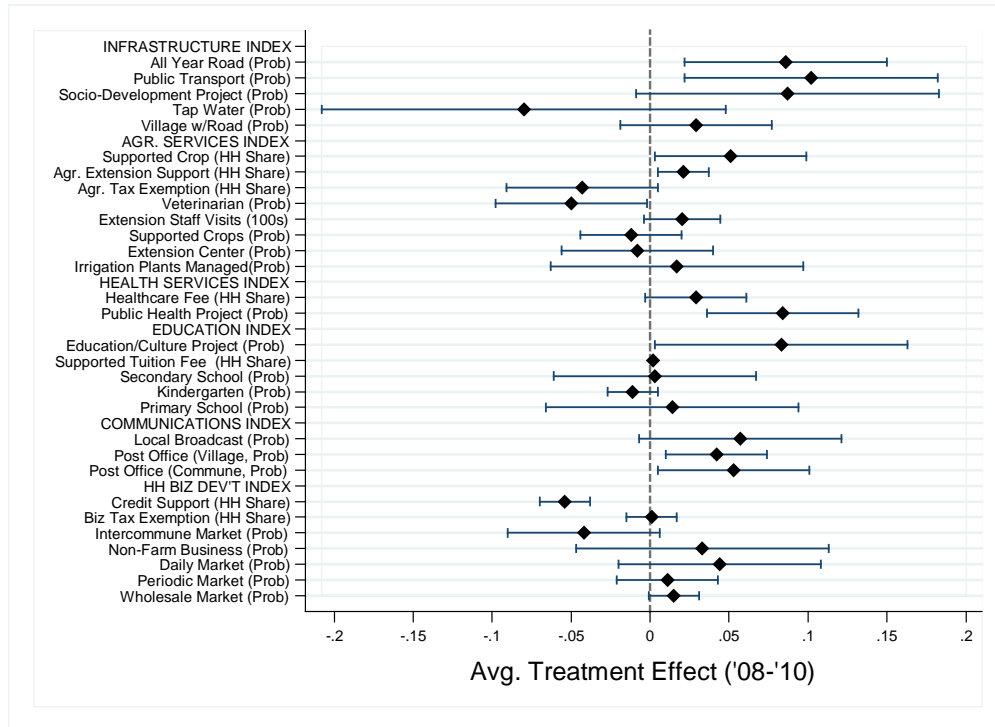


Figure 3: Difference in Difference Analysis of Key Outcome Variables. This figure shows the Average Treatment Effect (ATE) of district removal. The results are derived from the fully specified difference-in-difference regression models in Table 2 and Online Appendix D, with each variable listed on the y-index used as the dependent variable in a separate regression. Dependent variables are organized into six groups: 1) Infrastructure Index (measuring quality of transportation infrastructure); 2) Agricultural (Agr.) Services Index (measuring access to agricultural extension programs and credit); 3) Health Services Index (measuring quality of public health services); 4) Education Index (measuring access to and quality of public education); 5) Communications Index (measuring post office and telecommunication infrastructure); and 6) HH Biz Dev't Index (measuring household business development services, such as credit access and markets).

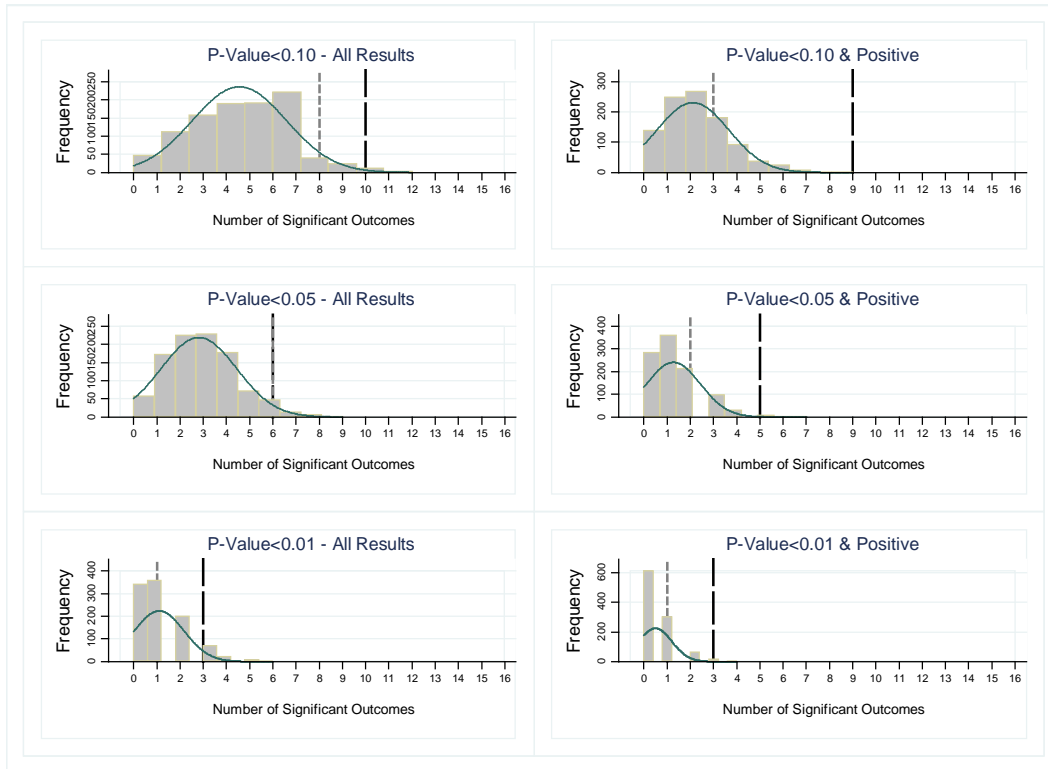


Figure 4: Randomization Inference Test on Total Number of Significant Outcomes - Comparison of Treatment to Monte Carlo Estimation with 1000 Simulations. Note: Long dashes show number of significant outcomes from actual treatment (2008 to 2010; see Online Appendix D for full results). Short dashes show number of significant outcomes from pre-treatment trending (2006 to 2008; see Online Appendix E for full results).

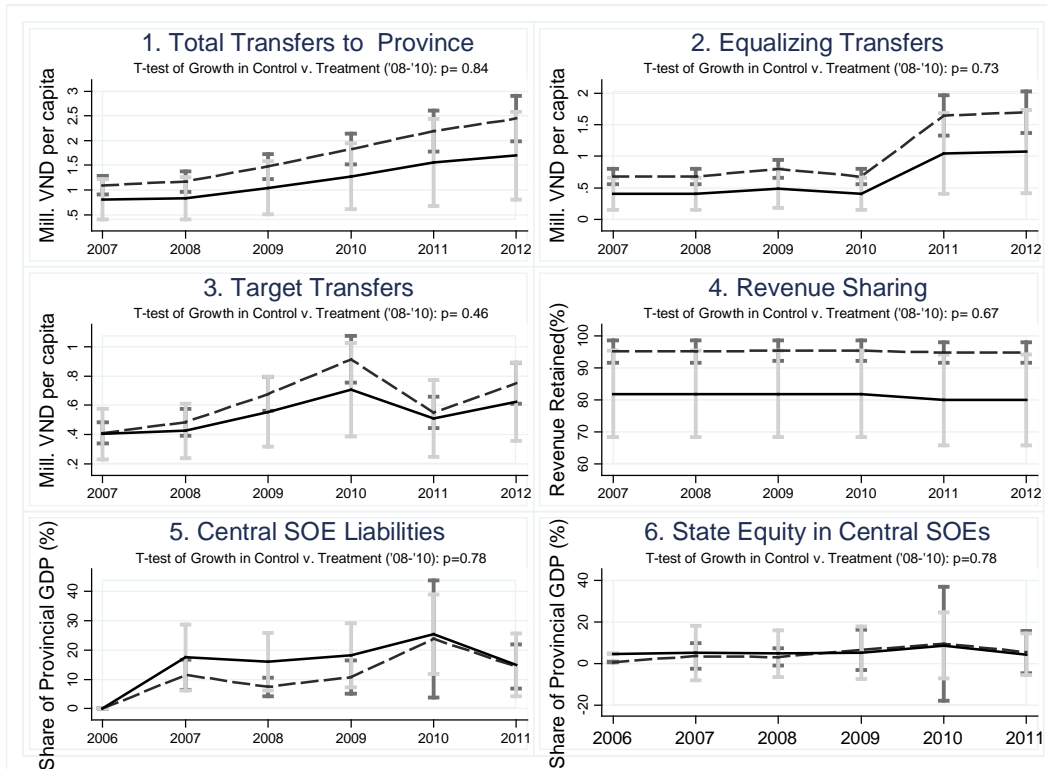


Figure 5: Test of Motivated Interference in Experimental Performance– Comparison of *per capita* transfers and state investment from the central government to control and treatment groups between 2006 and 2012. The treatment group is represented by solid lines and the control group by dashed lines. 90% are also presented for each year for both treatment (light gray) and control dark gray. T-tests are of the growth in all four variables between 2008 and 2010. Each panel studies a different type of transfer: Panel 1: total transfers (*per capita*) in millions of VND; Panels 2: equalizing transfers to make up for budget deficits; Panel 3 target transfers for socio-economic development programs (infrastructure, agriculture, environment, and poverty alleviation); Panel 4: Share of own-source revenue that can be retained by the province; Panel 5: Liabilities held by Central State Owned Enterprises (CSOEs) located in the province over provincial GDP; Panel 6: Central state equity held by CSOEs in province over provincial GDP. *Source: MOF (2006 to 2012) Source: GSO (2006-2011).*

Table 1: Balance between Ten Treatment Provinces and the Rest of the Country Based on 2008, Pre-Treatment Data

Variable	Means (All) N=63		Difference in Means (All) N=63		Difference in Means (No National Cities) N=58		Regression of Variable on Treatment (Controlling for National Level City & Regional FE) N=63; Region=7; Robust Standard Errors				
	Control	Treatment	T-Statistic	P-Value	T-Statistic	P-Value	B Treatment	P-Treatment	B City	P-City	R-Squared
	<i>Economic</i>										
GDP per capita (Millions of VND, Constant)	9248.1	22929.7	-2.351	0.022	-1.176	0.245	3,127.834	0.282	38,686.747**	0.009	0.543
Number of Non-State Enterprises	1649.8	5987.6	-2.114	0.039	-0.222	0.825	285.590	0.450	14,307.624**	0.021	0.484
Number of Local State Owned Enterprises	25.1	43.8	-1.642	0.106	0.550	0.585	-3.790	0.622	80.359**	0.013	0.490
Number of Foreign Invested Enterprises	57.81	189.70	-1.571	0.121	0.339	0.736	0.742	0.496	410.110*	0.025	0.465
FDI/Local Revenue (%)	9.02	20.79	-2.023	0.047	-2.022	0.048	0.102	0.103	-0.086	0.888	0.387
Manufacturing Output/GDP	31.45	43.29	-2.498	0.015	-2.252	0.028	5.851	0.194	6.029	0.240	0.304
Service Output/GDP	33.09	36.23	-1.073	0.287	0.376	0.708	-309.257	0.756	2,129.168*	0.035	0.383
Agricultural Output/GDP	35.46	20.49	3.076	0.003	1.792	0.079	-3.835	0.835	-22.365***	1.000	0.583
Employees of Private Business	45932.91	149830.90	-2.137	0.037	-0.145	0.885	5,036.913	0.461	329,347.252**	0.020	0.497
Average Income of Employee	932628.72	3561772.90	-2.003	0.050	-0.146	0.885	30,264.375	0.492	897,431.691**	0.022	0.487
Average Salary of Employee	916954.94	3504676.40	-2.007	0.049	-0.144	0.886	34,775.141	0.490	881,477.942**	0.022	0.488
<i>Structural Endowments</i>											
Surface Area of Province (KM Squared)	5638.5	3230.8	1.936	0.057	1.248	0.217	-1,188.808	0.895	-945.072	0.836	0.599
Annual Temperature (Celsius)	24.40	25.60	-1.202	0.234	-1.039	0.303	0.805	0.089	0.357	0.311	0.540
Annual Rainfall	153.13	150.70	0.181	0.857	-0.148	0.883	-4.449	0.658	7.104	0.324	0.346
Distance from Ha Noi or HCMC	253.0	282.1	-0.380	0.706	-0.236	0.814	42.748	0.131	-36.075	0.846	0.701
Province resulted from division of another province (%)	75.47	60.00	1.003	0.320	0.287	0.775	-0.084	0.699	-0.292	0.858	0.120
Province has international border (%)	39.62	50.00	-0.603	0.548	-0.790	0.433	0.173	0.195	-0.351*	0.958	0.164
<i>Demographic</i>											
Population (1000s)	1304.109	1709.3	1.792	0.609	1.248	0.550	-309.257	0.756	2,129.168*	0.035	0.383
Population Density (Per Square Kilometer)	387.7	819.4	-2.510	0.015	-0.777	0.441	62.837	0.321	906.960**	0.013	0.680
Share of Minorities in Population	2.06	1.40	1.450	0.152	0.967	0.338	0.033	0.413	-0.178*	0.962	0.697
Secondary School Graduates/Population (%)	84.10	87.74	-1.272	0.208	-0.443	0.659	-0.629	0.658	6.881***	0.000	0.330
<i>Quality of Governance</i>											
Provincial Competitiveness Index (PCI - 100 pts)	58.48	62.55	-1.948	0.056	-1.177	0.244	2.884	0.135	1.493	0.303	0.333
Unweighted PCI	53.12	56.00	-1.692	0.096	-1.078	0.286	2.279	0.139	0.379	0.436	0.331
Entry Costs (Subindex 1 - PCI)	8.28	8.45	-0.751	0.455	-0.431	0.668	0.118	0.257	-0.169	0.706	0.236
Land Access/Security (Subindex 2 - PCI)	6.44	6.30	0.434	0.666	-0.446	0.658	0.291	0.134	-1.396***	1.000	0.463
Transparency (Subindex 3 - PCI)	5.84	6.30	-1.325	0.190	-0.803	0.425	0.337	0.243	0.526*	0.046	0.108
Time Costs (Subindex 4 - PCI)	6.45	6.98	-1.443	0.154	-0.935	0.354	0.162	0.323	0.218	0.357	0.316
Informal Charges (Subindex 5 - PCI)	6.14	6.05	0.269	0.789	-0.159	0.874	0.147	0.313	-0.867**	0.994	0.567
Bias toward SOEs (Subindex 6 - PCI)	5.14	5.57	-1.143	0.258	-1.714	0.092	0.744***	0.002	-0.656*	0.956	0.295
Leadership Proactivity (Subindex 7 - PCI)	4.96	5.28	-0.542	0.590	-0.412	0.682	0.642	0.215	-0.934	0.854	0.279
Business Support (Subindex 8 - PCI)	5.04	5.59	-1.475	0.145	0.419	0.677	-0.126	0.699	2.395***	0.000	0.599
Labor Quality (Subindex 9 - PCI)	4.69	5.49	-3.196	0.002	-1.605	0.114	0.415*	0.025	0.854**	0.009	0.381
Legal Institutions (Subindex 10 - PCI)	5.29	5.56	-1.053	0.296	-1.560	0.124	0.291	0.143	-0.249	0.773	0.181
"Leaders good at working within law" (PCI %)	72.26	73.06	-0.258	0.798	0.066	0.948	0.016	0.345	-0.039	0.833	0.221
"Leaders are creative and clever" (PCI %)	43.59	47.26	-1.043	0.301	-0.457	0.650	0.043	0.197	-0.025	0.661	0.261
"Leaders willing to risk punishment" (PCI %)	23.20	23.79	-0.224	0.823	-0.253	0.801	0.026	0.259	-0.072	0.923	0.237
<i>Infrastructure Index (from PCI)</i>											
Infrastructure Index (from PCI)	54.96	61.36	-2.498	0.015	-1.503	0.138	1.832	0.230	6.076***	0.001	0.520
Asphalted Roads (%)	0.51	0.64	-1.670	0.100	-0.720	0.475	0.025	0.339	0.027	0.403	0.460
Telephones per Capita	0.26	0.33	-0.634	0.529	0.609	0.545	-0.096	0.787	0.739**	0.022	0.390
Number of Industrial Zones (IZ)	2.17	3.60	-1.062	0.292	0.053	0.958	-0.310	0.675	3.358***	0.001	0.465
Percentage of IZ Land Occupied	31.97	43.48	-1.106	0.273	-0.487	0.628	-8.220	0.836	24.740**	0.009	0.439
Price of Energy (VND/KW)	761.51	869.48	-1.811	0.075	-1.033	0.306	60.021	0.239	161.207**	0.007	0.182
Share of Businesses with E-Mail Addresses (%)	27.41	37.20	-2.829	0.006	-1.101	0.276	0.015	0.228	0.189***	0.000	0.621
<i>Use of Courts</i>											
Total Number of Cases Filed	113.943	613.4	-2.54	0.01	-0.42	0.68	182.065	0.181	1,228.601**	0.024	0.487
Percentage of Cases Filed by Private Plaintiffs	72.1	80.3	-0.91	0.37	-0.65	0.52	0.024	0.383	0.022	0.377	0.089
Share of Cases Resolved	69.7	76.4	-1.59	0.12	-1.73	0.09	0.089*	0.038	-0.003	0.524	0.065

Table 2: Difference-in-Difference Estimation between 2008 and 2010 using VHLSS Commune Data

<i>Model</i>	(1)	(2)	(3)	(4)	(5)	(6)	(7)
<i>Dependent Variable</i>	All-Year Road in Commune	Commune Has Public Transport	Socio-Dev't/ Infra. Project	Tap Water is Main Source	Village has Paved Road	Share of Households with Supported Crop	Share of Households Receiving Agricultural Extension
Time (2008 to 2010)	-0.007 (0.012)	-0.065*** (0.018)	0.047** (0.021)	0.246*** (0.033)	0.002 (0.011)	0.005 (0.009)	0.010*** (0.003)
Treatment	-0.104** (0.051)	-0.089* (0.051)	-0.022 (0.024)	0.011 (0.027)	-0.065 (0.041)	0.002 (0.017)	-0.007 (0.005)
Time*Treatment	0.086** (0.037)	0.102* (0.053)	0.087 (0.059)	-0.080 (0.077)	0.029 (0.027)	0.051** (0.025)	0.021* (0.012)
Surface Area of Commune (ln)	0.015 (0.022)	0.102*** (0.018)	-0.001 (0.022)	0.050** (0.022)	0.004 (0.022)	-0.027*** (0.009)	-0.014*** (0.005)
Commune Population (ln)	0.098*** (0.016)	0.116*** (0.022)	-0.069*** (0.018)	0.112*** (0.022)	0.056*** (0.016)	-0.056*** (0.010)	-0.021*** (0.004)
National Level City	-0.031 (0.032)	0.020 (0.039)	0.083** (0.042)	0.059 (0.045)	-0.005 (0.038)	-0.010 (0.012)	0.006 (0.010)
Regional FE	YES	YES	YES	YES	YES	YES	YES
Constant	0.352*** (0.124)	-0.068 (0.155)	0.795*** (0.152)	-0.665*** (0.162)	0.625*** (0.125)	0.394*** (0.072)	0.165*** (0.030)
Observations	4126	4126	4126	4126	4126	4126	4109
Mean of dependent variable 2008	0.799	0.751	0.555	0.084	0.875	0.076	0.028
Number of Province	58	58	58	58	58	58	58
R-squared	0.140	0.146	0.054	0.183	0.138	0.271	0.042
RMSE	0.369	0.410	0.480	0.365	0.305	0.153	0.093

Regressions employ OLS with standard errors clustered at district level and provincial level (***) $p < 0.01$, ** $p < 0.05$, * $p < 0.1$). Regional fixed effects employed for seven major regions, but five provinces of Central Highlands are dropped, as no pilot occurred there. Table reports only the first seven outcome variables in dataset. Full results are reported in Appendix D.

Table 3: Difference-in-Difference Estimation using VHLSS Commune Data on Aggregate Indices

Panel 1: Between 2008 and 2010						
<i>Model</i>	(1)	(2)	(3)	(4)	(5)	(6)
<i>Dependent Variable</i>	Transportation index	Agricultural Services index	Health Service index	Education index	Communication index	Household business development index
Time (2008 to 2010)	0.224*** (0.055)	0.042 (0.044)	-0.014 (0.016)	0.075*** (0.023)	-0.046** (0.022)	-0.011 (0.038)
Treatment	-0.269*** (0.081)	0.074 (0.106)	-0.013 (0.017)	0.057 (0.070)	-0.197*** (0.066)	-0.034 (0.158)
Time*Treatment	0.225** (0.109)	-0.003 (0.106)	0.123*** (0.030)	0.091 (0.073)	0.152** (0.061)	0.007 (0.114)
Surface Area of Commune (ln)	0.170*** (0.058)	0.102** (0.048)	-0.078*** (0.021)	0.231*** (0.044)	0.032 (0.042)	0.368*** (0.065)
Commune Population (ln)	0.313*** (0.050)	0.061 (0.045)	-0.130*** (0.019)	0.200*** (0.040)	0.089** (0.042)	0.454*** (0.063)
National Level City	0.126 (0.085)	-0.001 (0.066)	0.030* (0.017)	0.236*** (0.082)	-0.022 (0.042)	0.189 (0.134)
Regional FE	YES	YES	YES	YES	YES	YES
Constant	1.039*** (0.363)	2.281*** (0.337)	1.019*** (0.146)	-0.017 (0.308)	1.705*** (0.316)	-1.253*** (0.486)
Observations	4126	4126	4126	4126	4126	4126
Mean of dependent variable 2008	3.063	2.513	0.237	1.559	2.000	1.850
Number of provinces	58	58	58	58	58	58
R-squared	0.099	0.124	0.139	0.039	0.131	0.116
RMSE	1.004	0.888	0.385	0.851	0.663	1.019
Panel 2: Between 2006 and 2008						
<i>Model</i>	(1)	(2)	(3)	(4)	(5)	(6)
<i>Dependent Variable</i>	Transportation index	Agricultural Services index	Health Service index	Education index	Communication index	Household business development index
Time (2006 to 2008)	-0.000 (0.022)	0.083*** (0.030)	-0.007 (0.019)	0.022 (0.023)	0.025 (0.028)	0.032 (0.040)
Treatment	-0.158 (0.104)	-0.041 (0.135)	0.021 (0.029)	-0.002 (0.086)	-0.146* (0.078)	-0.033 (0.146)
Time*Treatment	-0.114*** (0.012)	0.080 (0.103)	-0.033 (0.032)	0.033 (0.032)	-0.051 (0.061)	-0.024 (0.052)
Surface Area of Commune (ln)	0.108** (0.053)	0.121** (0.060)	-0.089*** (0.019)	0.234*** (0.041)	-0.024 (0.043)	0.408*** (0.076)
Commune Population (ln)	0.198*** (0.052)	0.109** (0.054)	-0.132*** (0.017)	0.202*** (0.036)	0.041 (0.041)	0.501*** (0.077)
National Level City	0.095 (0.174)	0.101 (0.099)	0.035 (0.029)	0.187* (0.110)	-0.006 (0.052)	0.148* (0.087)
Regional FE	YES	YES	YES	YES	YES	YES
Constant	1.866*** (0.359)	1.964*** (0.409)	1.058*** (0.127)	0.022 (0.260)	2.050*** (0.312)	-1.565*** (0.572)
Observations	4,220	4,220	4,220	4,220	4,220	4,220
Mean of dependent variable (2006)	3.072	2.420	0.248	1.526	1.987	1.840
Number of Provinces	58	58	58	58	58	58
R-squared	0.049	0.116	0.139	0.035	0.129	0.123
RMSE	0.976	0.918	0.393	0.845	0.682	1.042

Regressions employ OLS with standard errors clustered at the district level and the provincial level (***) $p < 0.01$, (**) $p < 0.05$, (*) $p < 0.1$. Regional fixed-effects are employed for seven major regions, but five provinces of the Central Highlands are dropped, as no pilot occurred there. Dependent variables are additive indexes created by summing up the groups of variables in Figure 3. Continuous variables are re-scaled between 0 and 1, and then added in with dichotomous variables.

Table 4: Test of Hawthorne Effect - Using Visits from Ministry of Home Affairs to Conduct Evaluation

Panel 1: Regression Coefficients (Mutiway-Clustered Standard Errors)							
VARIABLES	(1)	(2)	(3)	(4)	(5)	(6)	
	Transportation index	Agricultural Services index	Health Service index	Education index	Communication index	Household business development index	
Time (β_1)	0.210*** (0.056)	0.043 (0.050)	-0.012 (0.018)	0.070*** (0.024)	-0.067*** (0.025)	-0.009 (0.041)	
Treatment (β_2)	-0.118 (0.128)	0.194* (0.112)	0.001 (0.032)	-0.019 (0.107)	-0.163** (0.076)	0.205 (0.242)	
MOHA Survey (β_3)	-0.224* (0.123)	0.019 (0.119)	0.001 (0.025)	0.014 (0.084)	0.000 (0.103)	0.509*** (0.175)	
Treatment*Survey (β_4)	-0.181 (0.292)	-0.260 (0.256)	-0.031 (0.047)	0.153 (0.169)	-0.056 (0.186)	-0.770** (0.323)	
Time*Treatment (β_5)	<u>Clean ATE</u> 0.110 (0.155)	-0.088 (0.093)	0.125*** (0.048)	0.145 (0.093)	0.184*** (0.025)	-0.056 (0.148)	
Time*Survey (β_6)	<u>Hawthorne Test II</u> 0.119 (0.143)	-0.003 (0.064)	-0.018 (0.031)	0.038 (0.046)	0.163*** (0.042)	-0.017 (0.074)	
Time*Treatment*Survey (β_7)	<u>Hawthorne Test I</u> 0.135 (0.345)	0.175 (0.227)	0.006 (0.070)	-0.136 (0.148)	-0.188 (0.152)	0.165 (0.225)	
Intercept (β_0)	1.095*** (0.356)	2.281*** (0.341)	1.020*** (0.145)	-0.025 (0.303)	1.701*** (0.316)	-1.366*** (0.451)	
Controls	YES	YES	YES	YES	YES	YES	
City Dummy	YES	YES	YES	YES	YES	YES	
Regional FE	YES	YES	YES	YES	YES	YES	
Observations	4,126	4,126	4,126	4,126	4,126	4,126	
Number of provinces	58	58	58	58	58	58	
Mean of dependent variable (2008)	3.063	3.063	3.063	3.063	3.063	3.063	
R-squared	0.104	0.125	0.140	0.040	0.133	0.130	
rmse	1.002	0.887	0.385	0.851	0.662	1.011	
Panel 2: Predicted Effects (By Time, Treatment, and Survey)							
	Transportation index	Agricultural Services index	Health Service index	Education index	Communication index	Household business development index	
	<u>Control Survey</u>	<u>Control Survey</u>	<u>Control Survey</u>	<u>Control Survey</u>	<u>Control Survey</u>	<u>Control Survey</u>	
2008	<u>Control</u> 3.13 2.91	<u>Control</u> 2.49 2.51	<u>Control</u> .24 .24	<u>Control</u> 1.55 1.57	<u>Control</u> 2.03 2.03	<u>Control</u> 1.79 2.30	
	<u>Treatment</u> 3.02 2.61	<u>Treatment</u> 2.68 2.44	<u>Treatment</u> .24 .21	<u>Treatment</u> 1.53 1.70	<u>Treatment</u> 1.86 1.81	<u>Treatment</u> 2.00 1.74	
2010	<u>Control</u> 3.35 3.24	<u>Control</u> 2.53 2.55	<u>Control</u> .22 .21	<u>Control</u> 1.62 1.68	<u>Control</u> 1.96 2.12	<u>Control</u> 1.78 2.27	
	<u>Treatment</u> 3.34 3.19	<u>Treatment</u> 2.64 2.57	<u>Treatment</u> .35 .31	<u>Treatment</u> 1.75 1.82	<u>Treatment</u> 1.98 1.90	<u>Treatment</u> 1.93 1.82	

Regressions employ OLS with standard errors clustered at district level and provincial level (** p<0.05, * p<0.1). Triple interaction of treatment, time, and visits by MOHA survey team. Regional fixed effects employed for seven major regions, but five provinces of Central Highlands are dropped, as no pilot occurred there.

Table 5: Effect of Treatment on Reported Corruption (Traditional Questions, PAPI Survey)

<i>Measures of corruption from Question D402 in UNDP-PAPI Survey (2011)</i>	Diversion of Funds			Construction Kickbacks			Bribe for Job		
	(1)	(2)	(3)	(4)	(5)	(6)	(7)	(8)	(9)
	Baseline	Controls	Geo-Match	Baseline	Controls	Geo-Match	Baseline	Controls	Geo-Match
Treatment	-0.098*** (0.029)	-0.104*** (0.028)	-0.116*** (0.038)	-0.073* (0.041)	-0.084** (0.038)	-0.091* (0.045)	-0.131** (0.055)	-0.137** (0.055)	-0.150** (0.068)
Male		0.002 (0.022)	-0.014 (0.040)		-0.000 (0.024)	-0.007 (0.039)		-0.024 (0.029)	-0.096* (0.052)
Age		-0.000 (0.001)	-0.001 (0.002)		-0.001 (0.001)	-0.001 (0.002)		-0.001 (0.001)	0.000 (0.002)
Minority		-0.030 (0.044)	-0.047 (0.050)		-0.050 (0.031)	-0.052 (0.060)		-0.067* (0.036)	0.002 (0.077)
Government Employee		-0.113*** (0.031)	-0.176*** (0.052)		-0.041 (0.042)	-0.077 (0.051)		0.057 (0.064)	0.035 (0.123)
Economic Status		-0.026* (0.014)	-0.034 (0.026)		-0.008 (0.016)	-0.045 (0.034)		-0.009 (0.011)	-0.036 (0.020)
National Level City	0.046 (0.035)	0.044 (0.036)	-0.027 (0.029)	0.095* (0.056)	0.097* (0.057)	0.089 (0.079)	0.032 (0.052)	0.035 (0.052)	0.022 (0.091)
Regional FE	Yes	Yes	Yes	Yes	Yes	Yes	Yes	Yes	Yes
Constant	0.328*** (0.028)	0.425*** (0.074)	0.523*** (0.127)	0.248*** (0.040)	0.327*** (0.089)	0.349** (0.153)	0.701*** (0.033)	0.794*** (0.067)	0.774*** (0.111)
Observations	5,476	5,414	1,686	5,430	5,378	1,692	5,588	5,535	1,739
Number of Provinces	58	58	58	58	58	58	58	58	58
Mean of dependent variable	0.174	0.174	0.197	0.200	0.200	0.211	0.313	0.313	0.372
R-squared	0.046	0.051	0.070	0.014	0.018	0.041	0.164	0.167	0.117

Regressions employ OLS with probability and post-stratification weights to address the probability of selection with robust standard errors clustered at the province and district levels (** p<0.01, * p<0.05, * p<0.1). Regional fixed effects employed for seven major regions, but five provinces of Central Highlands are dropped, as no pilot occurred there. N varies by number of citizens who experienced service. In Models 3, 6, and 9 the control group is trimmed to the two closest (by distance in km) non-treated districted in neighboring provinces for ever treatment province.

Source: PAPI-UNDP Survey 2011 (Question D402): I am going to read several statements about events that occur sometimes. When I read them to you, please think about your own experience and tell me how much you agree with each statement. That is to say, you agree completely, you agree somewhat, you disagree or you disagree completely. (Answers were coded as 2. Agree; 1. Somewhat Agree; 0. Disagree, but were re-coded for analysis to 1. Agree; 0. Disagree):

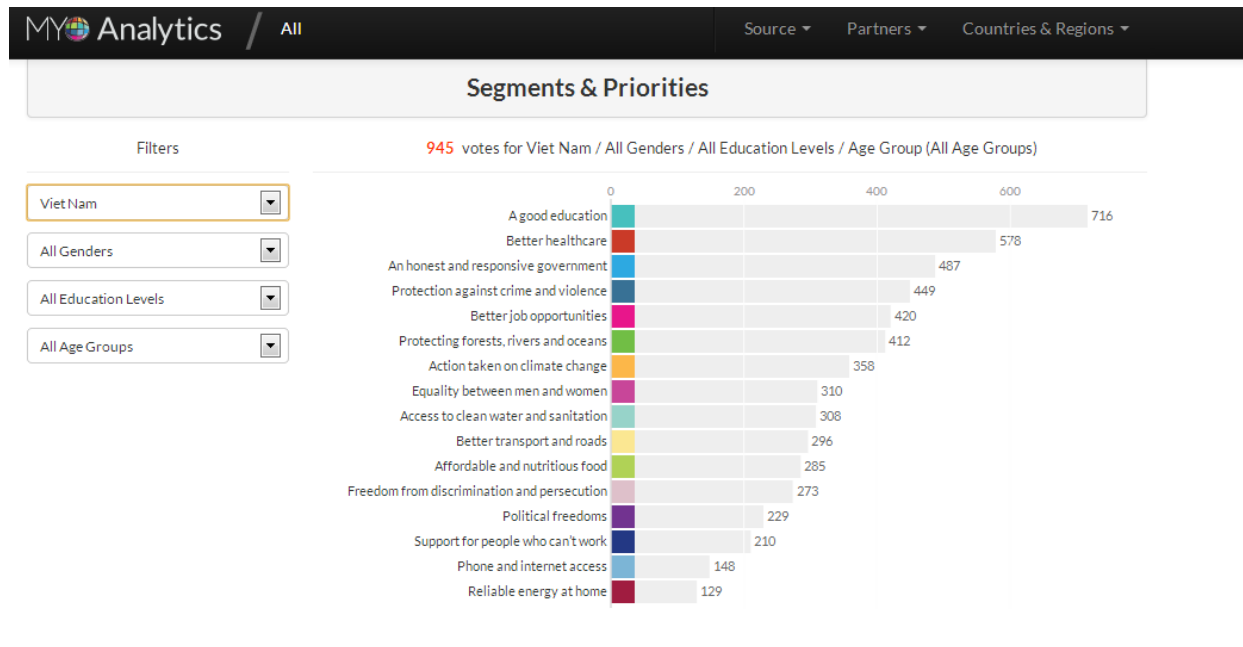
A. Officials divert funds from their budget for their personal benefit.
 E. Officials receive kickback in exchange for construction permits.
 F. In order to get a job in government, people have to pay a bribe.

The Impact of Recentralization on Public Services: A Diff-in-Diff Analysis of the Abolition of Elected Councils in Vietnam

(ONLINE APPENDIX – NOT INTENDED FOR PUBLICATION, BUT MADE AVAILABLE TO REVIEWERS)

Appendix	Analysis	Pages
Appendix A	Vietnam Results for MyWorld Survey (Results cited in Footnote 6)	b
Appendix B	The Importance of Infrastructure, Health, and Education Services in Citizens' Evaluation of Governance Quality (Results cited in Footnote 6)	c
Appendix C1	Descriptive Statistics of Variables Used in Main Regression (2008-2010) (Results cited in Footnote 18)	d
Appendix C2	Full Description of All Independent Variables Used in Main Regression (Cited in Footnote 16)	e & f
Appendix D	Difference-in-Difference Estimation between 2008 and 2010 using VHLSS Commune Data (Full Regression Results for Table 2 and Figure 3).	g & h
Appendix E	Testing the Parallel Paths Assumption: Using Pre-Treatment VHLSS 2006-2008 (Full regression results for all dependent variables, cited in Footnote 20).	i & j
Appendix F	Province-Level Difference-in-Difference Estimation using VHLSS Data (Results cited in Footnote 15).	k
Appendix G	Further Elaboration of Randomization Inference Test (Footnote 21)	l
Appendix H	Access to Basic Public Services (Robustness Using UNDP-PAPI 2011) (Results cited in Footnote 27).	m
Appendix I	Equality of Service Delivery by District within Province (Aggregate Indices) (Results cited in Footnote 25)	n
Appendix J	Changes in Local Leadership after Pilot (Results cited in Footnote 25)	o
Appendix K	Difference-in-Mean MOHA Special Funds to Province (Results cited in Footnote 22)	p
Appendix L	Difference-in-Mean State Investment in Province (Results cited in Footnote 23)	q

Appendix A: Vietnam Results for MyWorld Survey (<http://data.myworld2015.org/>)



Appendix B: The Importance of Infrastructure, Health, and Education Services in Citizens' Evaluation of Governance Quality

<i>Dependent Variable= Satisfaction with local governance quality (0 -100)</i>	Infrastructure only (1)	Education only (2)	Health only (3)	All services (4)	With control variables (5)
Infrastructure	2.374*** (0.849)			2.309*** (0.819)	2.380*** (0.894)
Health services		5.823*** (1.232)		5.624*** (1.215)	5.477*** (1.217)
Education services			6.861*** (2.226)	5.564** (2.220)	5.834** (2.214)
Male					0.888 (0.956)
Age					0.007 (0.026)
Minority					1.277 (1.495)
Government Employee					-0.016 (0.022)
Economic Status					0.005 (0.007)
National-Level City					0.018 (0.214)
Regional FE	Yes	Yes	Yes	Yes	Yes
Constant	76.532*** (1.895)	70.889*** (2.214)	69.460*** (3.769)	57.774*** (4.318)	55.379*** (5.360)
Observations	12,729	12,729	12,729	12,729	12,723
Number of Provinces	63	63	63	63	63
R-squared	0.010	0.018	0.011	0.025	0.026

Regressions employ OLS with probability and post-stratification weights to address the probability of selection with robust standard errors clustered at the province and district levels (***) p<0.01, ** p<0.05, * p<0.1)

Appendix C1: Descriptive Statistics of Main Variables Used in Regressions (2008-2010)

<u>Independent variables</u>	<u>Obs</u>	<u>Mean</u>	<u>Std. Dev.</u>	<u>Min</u>	<u>Max</u>
Log of area	2081	2.926	1.05	0.25	7.35
Log of commune area	2081	4.519	1.23	-1.11	7.66
Log of commune population density	2081	0.070	0.25	0.00	1.00
<u>Dependent Variables</u>	<u>Obs</u>	<u>Mean</u>	<u>Std. Dev.</u>	<u>Min</u>	<u>Max</u>
<i>Infrastructure index</i>	<i>2081</i>	<i>3.063</i>	<i>1.01</i>	<i>0.00</i>	<i>5.00</i>
All-Year Road in Commune	2081	0.799	0.40	0.00	1.00
Commune Has Public Transport	2081	0.751	0.43	0.00	1.00
Socio-Dev't/ Infra. Project	2081	0.555	0.50	0.00	1.00
Tap Water is Main Source	2081	0.084	0.28	0.00	1.00
<i>Agricultural Services index</i>	<i>2081</i>	<i>2.513</i>	<i>0.97</i>	<i>0.00</i>	<i>5.58</i>
Village has Paved Road	2081	0.875	0.33	0.00	1.00
Share of Households with Supported Crop	2081	0.076	0.18	0.00	1.00
Share of Households Receiving Agricultural Extension	2081	0.028	0.09	0.00	0.98
Share of Households Receiving Agriculture Tax Exemption	2081	0.162	0.33	0.00	1.00
Commune Has Veterinarians	2081	0.916	0.28	0.00	1.00
Number of visits by Agricultural Extension Staff	2081	0.092	0.10	0.00	1.80
Commune have Staff to Support Crops	2081	0.514	0.50	0.00	1.00
Commune has Agricultural Extension Center	2081	0.055	0.23	0.00	1.00
Commune Manages Irrigation Plants	2081	0.670	0.47	0.00	1.00
<i>Health Services index</i>	<i>2081</i>	<i>0.237</i>	<i>0.42</i>	<i>0.00</i>	<i>2.00</i>
Share of Households Supported w/ Healthcare Fee	2081	0.110	0.24	0.00	1.00
Public Health Project	2081	0.127	0.33	0.00	1.00
Education and Cultural Programs	2081	0.244	0.43	0.00	1.00
<i>Education index</i>	<i>2081</i>	<i>1.559</i>	<i>0.86</i>	<i>0.00</i>	<i>4.24</i>
Share of Households Supported w/Tuition fee	2071	0.021	0.03	0.00	0.25
Commune with Upper Secondary School	2081	0.160	0.37	0.00	1.00
Commune with Kindergarten	2081	0.617	0.49	0.00	1.00
Village with a Primary School	2081	0.516	0.50	0.00	1.00
<i>Communication index</i>	<i>2081</i>	<i>2.000</i>	<i>0.72</i>	<i>0.00</i>	<i>3.00</i>
Commune with Radio Broadcast	2081	0.806	0.40	0.00	1.00
Commune with Post Office	2081	0.897	0.30	0.00	1.00
Village with Post Office	2081	0.297	0.46	0.00	1.00
<i>Household business development index</i>	<i>2081</i>	<i>1.850</i>	<i>1.10</i>	<i>0.00</i>	<i>5.60</i>
Share of Households w/ Credit Support	2081	0.155	0.19	0.00	1.00
Share of households w/ Business Tax Exemption	2081	0.010	0.07	0.00	1.00
Commune with Market or Inter-commune Market	2081	0.637	0.48	0.00	1.00
Commune with Nonfarm Business	2081	0.605	0.49	0.00	1.00
Village with Daily Market	2081	0.287	0.45	0.00	1.00
Village with Periodic Market	2081	0.113	0.32	0.00	1.00
Village with Wholesale Market	2081	0.042	0.20	0.00	1.00

Appendix C2: Full Description of All Independent Variables Used in Main Regression

Individual Indicators	Code	Question
All-Year Road in Commune	This variable =1 if Q1=1 and Q2=12 of section 5	Q1. Is there a road passable by car to the People Committee Office of this commune? Q2. Usually how many months of the year is this road passable by car?
Commune Has Public Transport	Q11, section 5	Q11. Is there a passenger bus line, train or water transport that passes through the village?
Socio-Dev't/ Infra. Project	Q5, section 2, answer code = 3	Q5. Is there the following project in the commune: <i>Job creation</i> 1 <i>Hunger elimination and poverty reduction</i> 2 <i>Socio economic and infrastructure</i> 3 <i>Investment on culture and education</i> 4 <i>Health and public health</i> 5 <i>Environment/ clean water</i> 6 <i>Others (specify _____)</i> 7
Tap Water is Main Source	Q23, section 5 Answer code = 1, 2 and 3.	Q 23. What is the main source of drinking /cooking water for most people in this commune during the [season]? Indoor private piped water 1 Outdoor private piped water 2 Public piped water 3 Well water 4 Well with protection walls 5 Well without protection walls 6 Stream water with protection 7 Stream water without protection 8 Rainwater 9 Bottled water 10 Water brought by pedicab 11 Tank water 12 river lake pond..... 13 other (specify _____) 14
Village has Paved Road	Q7, section 5. Answer=1 or 2.	7. What is the material surface of the road? Cement/asphalt..... 1 Tar on gravel..... 2 Gravel..... 3 Dirt/earth..... 4 Other (specify_)..... 5
Share of Households with Supported Crop	Q7d, section 2	D7d. In 2007, through the HEPR program and other social support programs, how many households/people received Relief Fund for natural disasters and pre-harvest shortage?
Share of Households Receiving Agricultural Extension	Q7e, section 2	D7e. In 2007, through the HEPR program and other social support programs, how many households/people received Agricultural Extension training?
Share of Households Receiving Agriculture Tax Exemption	Q7g, section 2	Q7g. Exemption from land-use tax in agriculture (excluding the Households which exempted according to State's policy)
Commune Has Veterinarians	Q35, section 4	35. Does this commune have an animal health worker (veterinarian)?
Number of visits by Agricultural Extension Staff	Q33, section 4	33. How many times have staffs of agriculture extension center visited/ contacted the farmers of this commune in the last 12 months.
Commune have Staff to Support Crops	Q34, section 4	34. Does this commune have a plant protection official?
Commune has Agricultural Extension Center	Q26, section 4	26. Is there any agriculture extension center in this commune?
Commune Manages Irrigation Plants	Q21, section 5	21. Does this commune have any small irrigation system which managed by commune level or lower levels?
Share of Households Supported w/ Healthcare Fee	Q7c, section 2	D7c. In 2007, through the HEPR program and other social support programs, how many households/people received Exemption or reduction in hospital fees?

Public Health Project	Q5, section 2, answer code = 5	Q5. Is there the following project in the commune: <i>Job creation</i> 1 <i>Hunger elimination and poverty reduction</i> 2 <i>Socio economic and infrastructure</i> 3 <i>Investment on culture and education</i> 4 <i>Health and public health</i> 5 <i>Environment/clean water</i> 6 <i>Others (specify _____)</i> 7
Education and Cultural Programs	Q5, section 2, answer code = 4	Q5. Is there the following project in the commune: <i>Job creation</i> 1 <i>Hunger elimination and poverty reduction</i> 2 <i>Socio economic and infrastructure</i> 3 <i>Investment on culture and education</i> 4 <i>Health and public health</i> 5 <i>Environment/clean water</i> 6 <i>Others (specify _____)</i> 7
Share of Households Supported w/Tuition fee	Q7c, section 2	D7c. In 2007, through the HEPR program and other social support programs, how many households/people received Exemption or reduction in tuition fees?
Commune with Upper Secondary School	Q3, section 6	Q1. Does this commune have an Upper Secondary School?
Commune with Kindergarten	Q26, section 6	Q26. Is there a kindergarten in this commune?
Village with a Primary School	Q6, section 6	Q9. Is a Primary School located in village?
Commune with Radio Broadcast	Q20, section 5	20. Does this commune have any commune radio station?
Commune with Post Office	Q18, section 5	Q18. Does this commune have any commune cultural post office?
Village with Post Office	Q24, section 5, Answer code=5	24. Is [...] located within this village? 1. Daily market 2. Periodic market 3. Wholesale market 4. Commune's people committee office 5. Post office 6. Bank/bank branch
Share of Households w/ Credit Support	Q7a, section 2	D7a. In 2007, through the HEPR program and other social support programs, how many households/people received credit/loans?
Share of households w/ Business Tax Exemption	Q7f, section 2	D7e. In 2007, through the HEPR program and other social support programs, how many households/people received business tax exemption?
Commune with Market or Inter-commune Market	Q22, section 5	Q 22. Does this commune have any commune market/inter--commune market?
Commune with Nonfarm Business	Q1, section 3	Q1. Is there any enterprise/firm/factory located in the area that the people from the commune can go there for work and come back home within the day
Village with Daily Market	Q24, section 5, Answer code=1	24. Is [...] located within this village? 1. Daily market 2. Periodic market 3. Wholesale market 4. Commune's people committee office 5. Post office 6. Bank/bank branch
Village with Periodic Market	Q24, section 5, Answer code=2	24. Is [...] located within this village? 1. Daily market 2. Periodic market 3. Wholesale market 4. Commune's people committee office 5. Post office 6. Bank/bank branch
Village with Wholesale Market	Q24, section 5, Answer code=3	24. Is [...] located within this village? 1. Daily market 2. Periodic market 3. Wholesale market 4. Commune's people committee office 5. Post office 6. Bank/bank branch

Appendix D: Difference-in-Difference Estimation between 2008 and 2010 using VHLSS Commune Data

Independent/Outcome Variables	(1) All-Year Road in Commune	(2) Commune Has Public Transport	(3) Socio-Dev't/ Infra. Project	(4) Tap Water is Main Source	(5) Village has Paved Road	(6) Share of Households with Supported Crop	(7) Share of Households Receiving Agricultural Extension	(8) Share of Households Receiving Agriculture Tax Exemption
Time (2008 to 2010)	-0.007 (0.012)	-0.065*** (0.018)	0.047** (0.021)	0.246*** (0.033)	0.002 (0.011)	0.005 (0.009)	0.010*** (0.003)	-0.005 (0.020)
Treatment	-0.104** (0.051)	-0.089* (0.051)	-0.022 (0.024)	0.011 (0.027)	-0.065 (0.041)	0.002 (0.017)	-0.007 (0.005)	0.063 (0.042)
Time*Treatment	0.086** (0.037)	0.102* (0.053)	0.087 (0.059)	-0.080 (0.077)	0.029 (0.027)	0.051** (0.025)	0.021* (0.012)	-0.043 (0.029)
Surface Area of Commune (ln)	0.015 (0.022)	0.102*** (0.018)	-0.001 (0.022)	0.050** (0.022)	0.004 (0.022)	-0.027*** (0.009)	-0.014*** (0.005)	-0.095*** (0.018)
Commune Population (ln)	0.098*** (0.016)	0.116*** (0.022)	-0.069*** (0.018)	0.112*** (0.022)	0.056*** (0.016)	-0.056*** (0.010)	-0.021*** (0.004)	-0.123*** (0.015)
National-Level City	-0.031 (0.032)	0.020 (0.039)	0.083** (0.042)	0.059 (0.045)	-0.005 (0.038)	-0.010 (0.012)	0.006 (0.010)	-0.013 (0.035)
Regional FE	YES	YES	YES	YES	YES	YES	YES	YES
Constant	0.352*** (0.124)	-0.068 (0.155)	0.795*** (0.152)	-0.665*** (0.162)	0.625*** (0.125)	0.394*** (0.072)	0.165*** (0.030)	0.992*** (0.124)
Observations	4126	4126	4126	4126	4126	4126	4126	4126
Mean of dependent variable 2008	0.401	0.432	0.497	0.277	0.331	0.177	0.085	0.334
Number of Provinces	58	58	58	58	58	58	58	58
R-squared	0.140	0.146	0.054	0.183	0.138	0.271	0.042	0.105
RMSE	0.369	0.410	0.480	0.365	0.305	0.153	0.093	0.312

Independent/Outcome Variables	(9) Commune Has Veterinarians	(10) Number of visits by Agricultural Extension Staff	(11) Commune have Staff to Support Crops	(12) Commune has Agricultural Extension Center	(13) Commune Manages Irrigation Plants	(14) Share of Households Supported w/ Healthcare Fee	(15) Public Health Project
Time (2008 to 2010)	0.045*** (0.017)	-0.002 (0.005)	-0.025 (0.021)	0.001 (0.008)	0.013 (0.020)	-0.013 (0.010)	-0.000 (0.012)
Treatment	0.011 (0.024)	-0.010 (0.008)	0.031 (0.076)	0.035** (0.017)	-0.050 (0.046)	0.005 (0.014)	-0.018 (0.022)
Time*Treatment	-0.050 (0.031)	0.020 (0.015)	-0.012 (0.020)	-0.008 (0.025)	0.017 (0.045)	0.039*** (0.015)	0.084*** (0.031)
Surface Area of Commune (ln)	0.058** (0.023)	0.014** (0.006)	0.069** (0.029)	0.043*** (0.009)	0.054** (0.023)	-0.059*** (0.015)	-0.019 (0.016)
Commune Population (ln)	0.067*** (0.024)	0.012** (0.005)	0.111*** (0.021)	0.032*** (0.008)	0.040** (0.019)	-0.106*** (0.015)	-0.024* (0.013)
National-Level City	-0.029 (0.026)	0.011 (0.023)	0.088 (0.073)	0.004 (0.021)	-0.058 (0.059)	0.013 (0.014)	0.017 (0.024)
Regional FE	YES	YES	YES	YES	YES	YES	YES
Constant	0.487*** (0.184)	-0.029 (0.039)	0.019 (0.164)	-0.230*** (0.061)	0.484*** (0.148)	0.751*** (0.112)	0.269*** (0.104)
Observations	4126	4126	4126	4126	4126	4126	4126
Mean of dependent variable 2008	0.278	0.104	0.500	0.229	0.470	0.238	0.333
Number of Provinces	58	58	58	58	58	58	58
R-squared	0.066	0.083	0.175	0.013	0.062	0.282	0.013
RMSE	0.238	0.107	0.454	0.229	0.454	0.195	0.336

Regressions employ OLS with standard errors clustered at district level and provincial level (**p < 0.01, *p < 0.05, p < 0.1). Regional fixed-effects are employed for seven major regions, but five provinces of the Central Highlands are dropped, as no pilot occurred there.

Appendix D: Difference-in-Difference Estimation between 2008 and 2010 using VHLSS Commune Data (Cont.)

Independent/Outcome Variables	(16) Education and Cultural Programs	(17) Share of Households Supported w/Tuition fee	(18) Commune with Upper Secondary School	(19) Commune with Kindergarten	(20) Village with a Primary School	(21) Commune with Radio Broadcast	(22) Commune with Post Office	(23) Village with Post Office
Time (2008 to 2010)	0.069*** (0.019)	-0.000 (0.001)	0.016 (0.010)	0.035*** (0.012)	-0.045*** (0.016)	0.011 (0.008)	-0.006 (0.011)	-0.051*** (0.019)
Treatment	0.009 (0.037)	0.001 (0.001)	0.071*** (0.026)	-0.012 (0.048)	-0.012 (0.036)	-0.136* (0.075)	-0.011 (0.026)	-0.050* (0.028)
Time*Treatment	0.083* (0.047)	0.002 (0.002)	0.003 (0.043)	-0.011 (0.014)	0.014 (0.047)	0.057 (0.039)	0.042** (0.021)	0.053* (0.031)
Surface Area of Commune (ln)	0.012 (0.020)	-0.010*** (0.002)	0.129*** (0.016)	0.117*** (0.026)	-0.016 (0.028)	0.070** (0.028)	0.034** (0.017)	-0.073*** (0.019)
Commune Population (ln)	-0.017 (0.019)	-0.015*** (0.002)	0.132*** (0.018)	0.146*** (0.025)	-0.046* (0.025)	0.112*** (0.028)	0.028* (0.017)	-0.052*** (0.017)
National-Level City	0.017 (0.034)	0.003 (0.002)	0.020 (0.028)	0.054 (0.061)	0.142** (0.066)	-0.009 (0.041)	-0.068*** (0.016)	0.055 (0.063)
Regional FE	YES	YES	YES	YES	YES	YES	YES	YES
Constant	0.250* (0.150)	0.114*** (0.012)	-0.859*** (0.129)	-0.210 (0.191)	0.689*** (0.201)	0.216 (0.207)	0.721*** (0.125)	0.768*** (0.134)
Observations	4126	4109	4126	4126	4126	4126	4126	4126
Mean of dependent variable 2008	0.429	0.032	0.367	0.486	0.500	0.395	0.304	0.457
Number of Provinces	58	58	58	58	58	58	58	58
R-squared	0.056	0.211	0.036	0.181	0.083	0.306	0.016	0.026
RMSE	0.437	0.030	0.370	0.436	0.479	0.322	0.303	0.441

Independent/Outcome Variables	(24) Share of Households w/ Credit Support	(25) Share of households w/ Business Tax Exemption	(26) Commune with Market or Inter-commune Market	(27) Commune with Nonfarm Business	(28) Village with Daily Market	(29) Village with Periodic Market	(30) Village with Wholesale Market
Time (2008 to 2010)	0.021*** (0.007)	-0.000 (0.003)	0.015 (0.012)	-0.010 (0.015)	-0.027** (0.013)	-0.007 (0.012)	-0.004 (0.007)
Treatment	0.036 (0.025)	0.004 (0.004)	0.040 (0.050)	-0.007 (0.061)	-0.080 (0.052)	-0.016 (0.033)	-0.010 (0.024)
Time*Treatment	-0.054*** (0.012)	0.001 (0.006)	-0.042 (0.034)	0.033 (0.048)	0.044 (0.037)	0.011 (0.020)	0.015 (0.013)
Surface Area of Commune (ln)	-0.079*** (0.011)	-0.009** (0.005)	0.214*** (0.026)	0.117*** (0.024)	0.072*** (0.027)	0.032** (0.016)	0.021*** (0.008)
Commune Population (ln)	-0.098*** (0.010)	-0.012*** (0.004)	0.238*** (0.025)	0.175*** (0.023)	0.105*** (0.022)	0.030** (0.013)	0.016* (0.009)
National-Level City	-0.015 (0.020)	-0.001 (0.002)	-0.028 (0.034)	0.063* (0.034)	0.101 (0.076)	0.048 (0.040)	0.021 (0.018)
Regional FE	YES	YES	YES	YES	YES	YES	YES
Constant	0.815*** (0.073)	0.093*** (0.032)	-1.105*** (0.187)	-0.525*** (0.163)	-0.392** (0.179)	-0.054 (0.105)	-0.086 (0.069)
Observations	4126	4126	4126	4126	4126	4126	4126
Mean of dependent variable 2008	0.188	0.070	0.481	0.489	0.453	0.317	0.201
Number of Provinces	58	58	58	58	58	58	58
R-squared	0.188	0.019	0.110	0.104	0.098	0.038	0.008
RMSE	0.174	0.068	0.451	0.463	0.427	0.306	0.199

Regressions employ OLS with standard errors clustered at district level and provincial level (***) $p < 0.01$, (**) $p < 0.05$, (*) $p < 0.1$). Regional fixed-effects are employed for seven major regions, but five provinces of the Central Highlands are dropped, as no pilot occurred there.

Appendix E: Testing the Parallel Paths Assumption: Using Pre-Treatment VHLSS 2006-2008

Independent/Outcome Variables	(1)	(2)	(3)	(4)	(5)	(6)	(7)	(8)
	All-Year Road in Commune	Commune Has Public Transport	Socio-Dev't/ Infra. Project	Tap Water is Main Source	Village has Paved Road	Share of Households with Supported Crop	Share of Households Receiving Agricultural Extension	Share of Households Receiving Agriculture Tax Exemption
Time (2008 to 2010)	0.021** (0.010)	-0.029** (0.012)	-0.012 (0.012)	0.013** (0.006)	0.007 (0.007)	0.036*** (0.012)	-0.001 (0.002)	-0.007 (0.018)
Treatment	-0.036 (0.050)	-0.012 (0.023)	-0.038** (0.017)	-0.022 (0.021)	-0.051 (0.039)	0.016 (0.025)	-0.013 (0.008)	0.036** (0.015)
Time*Treatment	-0.070** (0.032)	-0.079** (0.037)	0.012 (0.026)	0.042** (0.017)	-0.019 (0.024)	-0.016 (0.038)	-0.001 (0.007)	0.030 (0.042)
Surface Area of Commune (ln)	0.016 (0.018)	0.091*** (0.023)	-0.023 (0.029)	0.012 (0.014)	0.012 (0.018)	-0.029*** (0.007)	-0.013*** (0.004)	-0.093*** (0.021)
Commune Population (ln)	0.091*** (0.014)	0.109*** (0.024)	-0.095*** (0.022)	0.038** (0.017)	0.054*** (0.013)	-0.054*** (0.008)	-0.016*** (0.004)	-0.125*** (0.018)
National-Level City	-0.050 (0.066)	0.043 (0.059)	0.048 (0.057)	0.084*** (0.020)	-0.030 (0.075)	-0.004 (0.012)	0.043** (0.020)	0.001 (0.021)
Regional FE	0.386***	0.019	1.016***	-0.189*	0.634***	0.360***	0.139***	0.980***
Constant	(0.098) YES	(0.179) YES	(0.172) YES	(0.115) YES	(0.094) YES	(0.057) YES	(0.028) YES	(0.146) YES
Observations	4,220	4,220	4,220	4,220	4,220	4,220	4,220	4,220
Mean of dependent variable 2006	0.782	0.792	0.566	0.067	0.865	0.042	0.029	0.166
Number of Provinces	58	58	58	58	58	58	58	58
R-squared	0.140	0.139	0.052	0.040	0.155	0.192	0.026	0.107
RMSE	0.377	0.390	0.483	0.258	0.309	0.137	0.0896	0.319

Independent/Outcome Variables	(9)	(10)	(11)	(12)	(13)	(14)	(15)
	Commune Has Veterinarians	Number of visits by Agricultural Extension Staff	Commune have Staff to Support Crops	Commune has Agricultural Extension Center	Commune Manages Irrigation Plants	Share of Households Supported w/ Healthcare Fee	Public Health Project
Time (2008 to 2010)	0.030** (0.013)	0.011** (0.005)	0.031* (0.016)	-0.016 (0.013)	-0.000 (0.011)	0.006 (0.009)	-0.012 (0.013)
Treatment	-0.017 (0.038)	0.001 (0.009)	-0.018 (0.080)	-0.013 (0.015)	-0.033 (0.038)	0.010 (0.010)	0.010 (0.026)
Time*Treatment	0.014 (0.043)	-0.017* (0.009)	0.042 (0.046)	0.049** (0.025)	-0.021 (0.036)	-0.004 (0.021)	-0.030 (0.024)
Surface Area of Commune (ln)	0.080*** (0.029)	0.009* (0.005)	0.068*** (0.023)	0.037*** (0.011)	0.063** (0.032)	-0.055*** (0.014)	-0.034* (0.018)
Commune Population (ln)	0.100*** (0.028)	0.009 (0.005)	0.116*** (0.016)	0.031*** (0.010)	0.047* (0.025)	-0.097*** (0.013)	-0.035** (0.014)
National-Level City	-0.038 (0.051)	0.027** (0.012)	0.061 (0.087)	0.007 (0.014)	0.004 (0.092)	0.010 (0.016)	0.025 (0.029)
Regional FE	0.262	-0.006	-0.000	-0.200***	0.429**	0.692***	0.365***
Constant	(0.205) YES	(0.039) YES	(0.134) YES	(0.077) YES	(0.195) YES	(0.091) YES	(0.111) YES
Observations	4,220	4,220	4,220	4,220	4,220	4,220	4,220
Mean of dependent variable 2006	0.883	0.084	0.479	0.064	0.674	0.102	0.143
Number of Provinces	58	58	58	58	58	58	58
R-squared	0.090	0.078	0.178	0.012	0.070	0.286	0.012
RMSE	0.287	0.0945	0.453	0.236	0.453	0.197	0.340

Regressions employ OLS with standard errors clustered at district level and provincial level (**p<0.01, **p<0.05, *p<0.1). Regional fixed-effects are employed for seven major regions, but five provinces of the Central Highlands are dropped, as no pilot occurred there.

Appendix E: Testing the Parallel Paths Assumption: Using Pre-Treatment VHLSS 2006-2008 (Cont.)

	(16)	(17)	(18)	(19)	(20)	(21)	(22)	(23)
Independent/Outcome Variables	Education and Cultural Programs	Share of Households Supported w/Tuition fee	Commune with Upper Secondary School	Commune with Kindergarten	Village with a Primary School	Commune with Radio Broadcast	Commune with Post Office	Village with Post Office
Time (2008 to 2010)	-0.004 (0.014)	-0.000 (0.001)	-0.004 (0.006)	0.032** (0.013)	-0.001 (0.017)	0.000 (0.012)	0.031*** (0.010)	-0.006 (0.023)
Treatment	0.012 (0.013)	0.001 (0.003)	0.040** (0.019)	0.028 (0.054)	-0.084 (0.060)	-0.136* (0.073)	0.015 (0.031)	-0.025 (0.037)
Time*Treatment	-0.003 (0.010)	0.001 (0.002)	0.021 (0.028)	-0.062* (0.034)	0.075*** (0.029)	-0.015 (0.026)	-0.020 (0.013)	-0.015 (0.043)
Surface Area of Commune (ln)	0.002 (0.020)	-0.009*** (0.002)	0.142*** (0.017)	0.124*** (0.026)	-0.025 (0.023)	0.059* (0.031)	0.013 (0.020)	-0.096*** (0.021)
Commune Population (ln)	-0.029** (0.013)	-0.014*** (0.001)	0.145*** (0.020)	0.154*** (0.024)	-0.054*** (0.020)	0.103*** (0.030)	0.005 (0.015)	-0.067*** (0.022)
National-Level City	-0.009 (0.027)	0.001 (0.002)	0.045 (0.045)	0.102 (0.105)	0.048 (0.054)	0.060 (0.062)	-0.052 (0.037)	-0.014 (0.047)
Regional FE	0.336***	0.105***	-0.950***	-0.241	0.772***	0.300	0.847***	0.902***
Constant	(0.104)	(0.011)	(0.135)	(0.184)	(0.157)	(0.222)	(0.123)	(0.163)
	YES	YES	YES	YES	YES	YES	YES	YES
Observations	4,220	4,203	4,220	4,220	4,220	4,220	4,220	4,220
Mean of dependent variable 2008	0.246	0.021	0.159	0.589	0.511	0.811	0.868	0.307
Number of Provinces	58	58	58	58	58	58	58	58
R-squared	0.048	0.196	0.040	0.212	0.071	0.321	0.015	0.022
RMSE	0.420	0.0304	0.359	0.434	0.482	0.324	0.320	0.454

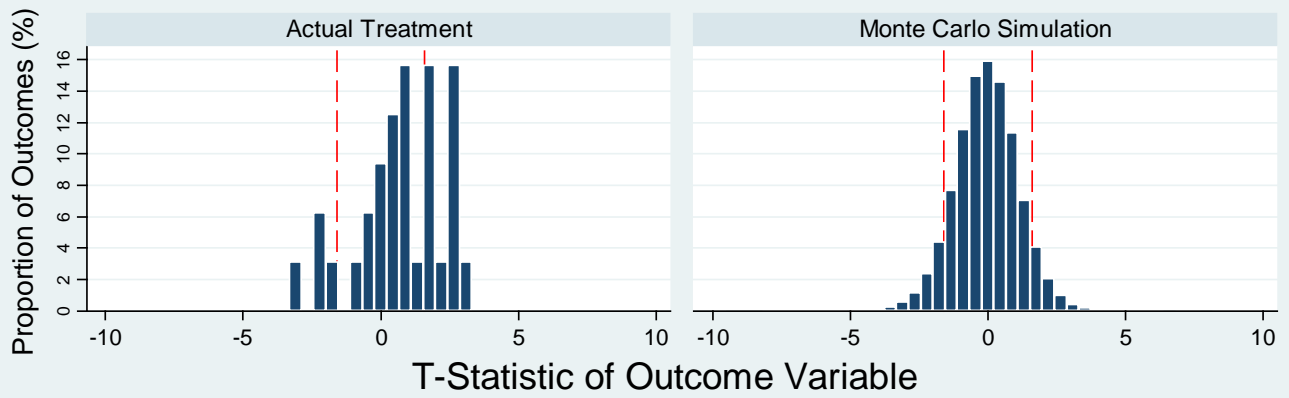
	(24)	(25)	(26)	(27)	(28)	(29)	(30)
Independent/Outcome Variables	Share of Households w/ Credit Support	Share of households w/ Business Tax Exemption	Commune with Market or Inter-commune Market	Commune with Nonfarm Business	Village with Daily Market	Village with Periodic Market	Village with Wholesale Market
Time (2008 to 2010)	0.017*** (0.004)	-0.004 (0.004)	-0.018** (0.008)	0.046*** (0.017)	-0.018 (0.016)	0.001 (0.012)	0.007 (0.009)
Treatment	0.022 (0.020)	0.013** (0.006)	-0.013 (0.048)	-0.051 (0.047)	-0.048 (0.059)	-0.008 (0.027)	0.051*** (0.018)
Time*Treatment	0.005 (0.010)	-0.006 (0.008)	0.037 (0.028)	0.028 (0.045)	-0.031 (0.030)	0.002 (0.031)	-0.059*** (0.023)
Surface Area of Commune (ln)	-0.064*** (0.008)	-0.011* (0.006)	0.249*** (0.038)	0.121*** (0.034)	0.081*** (0.030)	0.014 (0.016)	0.018* (0.009)
Commune Population (ln)	-0.076*** (0.009)	-0.014** (0.006)	0.265*** (0.034)	0.177*** (0.027)	0.116*** (0.027)	0.016 (0.014)	0.016** (0.008)
National-Level City	0.012 (0.011)	-0.002 (0.004)	0.017 (0.025)	0.100 (0.072)	0.061 (0.051)	-0.042* (0.024)	0.003 (0.023)
Regional FE	0.656***	0.105**	-1.288***	-0.576***	-0.452**	0.072	-0.084
Constant	(0.061)	(0.046)	(0.260)	(0.208)	(0.203)	(0.102)	(0.062)
	YES	YES	YES	YES	YES	YES	YES
Observations	4,220	4,220	4,220	4,220	4,220	4,220	4,220
Mean of dependent variable 2008	0.138	0.015	0.644	0.554	0.309	0.110	0.042
Number of Provinces	58	58	58	58	58	58	58
R-squared	0.120	0.040	0.116	0.111	0.093	0.036	0.009
RMSE	0.169	0.0821	0.451	0.466	0.436	0.310	0.200

Regressions employ OLS with standard errors clustered at district level and provincial level (** p<0.01, ** p<0.05, * p<0.1). Regional fixed-effects are employed for seven major regions, but five provinces of the Central Highlands are dropped, as no pilot occurred there.

Appendix F: Province-Level Diff-in-Diff Estimation using VHLSS Data on Aggregate Indices

Panel 1: Between 2008 and 2010						
Model	(1)	(2)	(3)	(4)	(5)	(6)
Dependent Variable	Transportation index	Agricultural Services index	Health Service index	Education index	Communication index	Household business development index
Time (2008 to 2010)	0.216*** (0.064)	0.058 (0.046)	-0.028 (0.020)	0.079** (0.032)	-0.045* (0.024)	-0.004 (0.039)
Treatment	-0.332*** (0.111)	0.065 (0.118)	-0.005 (0.035)	0.154 (0.097)	-0.196** (0.084)	-0.032 (0.188)
Time*Treatment	0.377** (0.169)	0.005 (0.137)	0.109** (0.044)	0.014 (0.095)	0.136* (0.080)	0.085 (0.178)
National-Level City	0.203* (0.111)	0.131* (0.078)	-0.019 (0.037)	0.385** (0.148)	-0.026 (0.057)	0.202 (0.142)
Regional FE	3.165***	2.782***	0.156***	1.489***	2.250***	1.923***
Constant	(0.075)	(0.091)	(0.024)	(0.081)	(0.046)	(0.123)
	YES	YES	YES	YES	YES	YES
Observations	116	116	116	116	116	116
Mean of dependent variable 2008	3.066	2.435	0.255	1.588	1.962	1.823
Number of provinces	58	58	58	58	58	58
R-squared	0.415	0.467	0.584	0.368	0.611	0.430
RMSE	0.387	0.363	0.128	0.237	0.219	0.372
Panel 2: Between 2006 and 2008						
Model	(1)	(2)	(3)	(4)	(5)	(6)
Dependent Variable	Transportation index	Agricultural Services index	Health Service index	Education index	Communication index	Household business development index
Time (2006 to 2008)	0.016 (0.032)	0.085** (0.041)	-0.011 (0.019)	0.017 (0.035)	0.030 (0.025)	0.046 (0.040)
Treatment	-0.158 (0.126)	-0.066 (0.160)	0.024 (0.034)	0.087 (0.099)	-0.221** (0.089)	-0.024 (0.163)
Time*Treatment	-0.129* (0.072)	0.120 (0.178)	-0.032 (0.044)	0.059 (0.064)	0.015 (0.096)	-0.077 (0.136)
National-Level City	0.075 (0.166)	0.087 (0.126)	-0.008 (0.024)	0.352** (0.140)	0.007 (0.051)	0.290** (0.135)
Regional FE	YES	YES	YES	YES	YES	YES
Constant	3.214*** (0.055)	2.809*** (0.087)	0.154*** (0.022)	1.521*** (0.092)	2.224*** (0.046)	1.963*** (0.113)
Observations	116	116	116	116	116	116
Mean of dependent variable (2006)	3.075	2.389	0.261	1.574	1.948	1.817
Number of Provinces	58	58	58	58	58	58
R-squared	0.329	0.373	0.570	0.285	0.603	0.473
RMSE	0.338	0.431	0.139	0.260	0.235	0.369

Regressions employ OLS on provincial averages of dependent variables with robust standard errors clustered at the province level (***) $p < 0.01$, ** $p < 0.05$, * $p < 0.1$). Regional fixed-effects are employed for seven major regions, but five provinces of the Central Highlands are dropped, as no pilot occurred there. Dependent variables are additive indexes created by summing up the groups of variables in Figure 3. Continuous variables are re-scaled between 0 and 1, and then added in with dichotomous variables.



Graphs by Randomization Inference



Graphs by Randomization Inference

Appendix G: Randomization Inference Test on Distribution of Significant Outcomes - Comparison of Treatment to Monte Carlo Estimation with 1000 Simulations. Left side depicts the results from the actual abolishment of District People’s Councils. The right side depicts the results of the Monte Carlo simulation, where an artificial treatment was randomly assigned to provinces.

Appendix H: Access to Basic Public Services (Robustness Using UNDP-PAPI 2011)

The survey uses a clustered sampling approach to provide empirically reliable estimates at all levels of Vietnamese government (province, district, commune, and village. In 2011, all 63 provinces were included in the sample. Within each province, the capital district was selected along with two others using probability proportional to size (PPS) sampling. A similar strategy was used to select three communes in each district and two villages in each commune. Sampling and post-stratification weights are used in the analysis.

<i>Model</i>	(1)	(2)	(3)	(4)	(5)	(6)	(7)
<i>Dependent Variable</i>	Road in Front of House is Paved			Garbage is Picked Up	Total Hospital Quality	Main Drinking Water is Lake/River	Total Education Quality
Treatment	0.150*** (0.040)	0.109*** (0.038)	0.105*** (0.037)	0.153*** (0.055)	0.819** (0.399)	-0.038*** (0.013)	0.383 (0.360)
Male			-0.006 (0.024)	-0.003 (0.019)	0.730** (0.310)	-0.018* (0.011)	0.713** (0.293)
Age			-0.000 (0.001)	0.001 (0.001)	0.004 (0.010)	0.000 (0.000)	-0.036*** (0.013)
Minority			-0.075* (0.041)	-0.215*** (0.038)	0.452 (0.366)	-0.038** (0.018)	-0.898** (0.359)
Government Employee			0.124 (0.076)	0.059 (0.047)	1.398** (0.607)	-0.063*** (0.017)	1.687** (0.705)
Economic Status			0.012 (0.011)	0.006 (0.010)	-0.007 (0.139)	0.009 (0.007)	0.151 (0.165)
National-Level City		0.042 (0.052)	0.041 (0.051)	0.110** (0.048)	0.841 (0.556)	-0.089*** (0.019)	0.497 (0.465)
Regional FE	No	Yes	Yes	Yes	Yes	Yes	Yes
Constant	0.260*** (0.022)	0.167*** (0.053)	0.138** (0.065)	0.829*** (0.072)	4.641*** (0.653)	0.143*** (0.034)	5.423*** (0.888)
Observations	7,940	7,940	7,848	7,705	3,998	7,853	3,115
Mean of dependent variable	0.334	0.334	0.334	0.482	5.429	0.057	5.201
Number of Provinces	58	58	58	58	58	58	58
R-squared	0.014	0.054	0.060	0.382	0.026	0.062	0.043

Regressions employ OLS with probability and post-stratification weights to address the probability of selection with robust standard errors clustered at the province and the district levels (***) $p < 0.01$, ** $p < 0.05$, * $p < 0.1$). Hospital and education quality are measured on 6-point scales, garbage pickup and drink water are dichotous variables, distance is continuous. Regional fixed-effects employed for seven major regions, but five provinces of the Central Highlands are dropped, as no pilot occurred there. N varies by number of citizens who experienced service (i.e. must have used hospital or have kids in school).

Appendix I: Equality of Service Delivery by District within Province (Aggregate Indices)

Between 2008 and 2010						
<i>Model</i>	(1)	(2)	(3)	(4)	(5)	(6)
<i>Dependent Variable</i>	Transportation index (Gini)	Agricultural Services index (Gini)	Health Service index (Gini)	Education index (Gini)	Communication index (Gini)	Household business development index (Gini)
Time (2008 to 2010)	0.003 (0.007)	-0.015 (0.010)	0.024 (0.027)	-0.003 (0.013)	-0.002 (0.009)	-0.013 (0.015)
Treatment	0.020 (0.016)	0.017 (0.019)	0.050 (0.043)	-0.013 (0.017)	0.020 (0.015)	-0.022 (0.022)
Time*Treatment	-0.022 (0.024)	-0.016 (0.024)	-0.094 (0.058)	0.017 (0.024)	0.006 (0.026)	0.033 (0.032)
National-Level City	0.023 (0.017)	0.003 (0.014)	-0.130** (0.056)	0.007 (0.019)	0.021 (0.018)	-0.019 (0.023)
Regional FE	Yes	Yes	Yes	Yes	Yes	Yes
Constant	0.362*** (0.138)	0.448* (0.249)	0.564 (0.449)	-0.006 (0.222)	0.097 (0.199)	0.242 (0.273)
Observations	114	114	114	114	114	114
Mean of Dependent Variable (2008)	0.121	0.153	0.511	0.187	0.127	0.216
Number of provinces	57	57	57	57	57	57
R-squared	0.295	0.328	0.303	0.253	0.392	0.373

Regressions employ OLS on provincial averages of dependent variables with robust standard errors clustered at the province level (***) $p < 0.01$, ** $p < 0.05$, * $p < 0.1$). Regional fixed-effects are employed for seven major regions, but five provinces of the Central Highlands are dropped, as no pilot occurred there. Dependent variables are the Gini coefficients, measuring the inequality of public service delivery among districts within the 57 provinces.

Appendix J: Changes in Local Leadership after Pilot

Between 2008 and 2010

Dependent Variable=1 if Commune leader was replaced

Treatment	-0.032 (0.057)
National-Level City	0.025 (0.081)
Regional FE	Yes
Constant	0.623 (0.048)
Observations	690
Ratio of Change to Total Leaders (T)	39/91
Ratio of Change to Total Leaders (C)	225/599
Pseudo R-squared	0.0352

Probit regression on dichotomous leadership variable change (***) $p < 0.01$, ** $p < 0.05$, * $p < 0.1$). Regional fixed-effects are employed for the seven major regions,

Appendix K: Difference-in-Means in Special Projects in Province (during Pilot)

<u>Variable</u>	<u>Means</u> <u>(All)</u>		<u>Difference in Means</u> <u>(All)</u>	
	<u>Control</u>	<u>Treatment</u>	<u>T-Statistic</u>	<u>P-Value</u>
<i>Level of MOHA Funding over Provincial GDP 2010</i>	n=53	n=10		
Total funding for all programs	3.03%	2.08%	1.02	0.31
Official development assistance	0.45%	0.46%	0.05	0.96
Infrastructure for port econ zone	0.08%	0.15%	0.66	0.51
Agricultural extension	0.03%	0.04%	0.41	0.69
Infrastructure for tourism	0.09%	0.06%	0.91	0.37
Local healthcare	0.06%	0.03%	1.74	0.09
Province/district split	0.22%	0.05%	1.40	0.17
Funding for minority people	0.02%	0.01%	0.88	0.38
Cutural programs	0.05%	0.04%	0.13	0.90
ODA matching fund	0.16%	0.10%	1.00	0.32
Other programs	0.34%	0.27%	0.49	0.63
Forest development	0.02%	0.02%	0.62	0.54
<i>Growth in MOHA Funding between 2008 and 2010</i>	n=53	n=10		
Total funding for all programs	4.4%	-10.7%	1.42	0.16
Official development assistance	24.8%	-15.4%	1.70	0.09
Infrastructure for port econ zone	-6.6%	5.5%	0.31	0.76
Agricultural extension	-36.5%	-13.7%	1.35	0.18
Infrastructure for tourism	-4.7%	-16.3%	1.72	0.09
Local healthcare	-55.8%	-58.3%	0.33	0.74
Province/district split	16.9%	27.8%	0.41	0.68
Funding for minority people	-90.2%	-79.0%	0.61	0.54
Cutural programs	-24.0%	-41.5%	0.65	0.52
ODA matching fund	53.2%	15.8%	1.03	0.31
Other programs	-2.2%	-14.3%	0.60	0.55
Forest development	-26.3%	-35.5%	0.64	0.52

Data is non-public data from the Ministry of Finance (2008-2010). We standardize both figures by nominal, provincial GDP.

Appendix L: Difference-in-Means State Investment in Province (during Pilot)

<u>Variable</u>	<u>Means</u> <u>(All)</u>		<u>Difference in Means</u> <u>(All)</u>	
	<u>Control</u>	<u>Treatment</u>	<u>T-Statistic</u>	<u>P-Value</u>
<i>Level of Central SOE Transfer Indicators (2009 & 2010)</i>	n=100	n=20		
Capital/Provincial GDP	25.30%	28.71%	-0.16	0.87
Liabilities/Provincial GDP	17.30%	21.77%	-0.29	0.77
State Equity/Provincial GDP	8.00%	6.93%	0.17	0.87
Investment/Provincial GDP	1.31%	1.31%	-0.01	0.99
Construction Outlays/Provincial GDP	4.16%	2.17%	0.34	0.73
Assets under Management/Provincial GDP	2.06%	2.18%	-0.17	0.87
<i>Growth in Central SOE Transfer Indicators (2008-2010)</i>	n=49	n=10		
Capital/Provincial GDP	23.3%	13.2%	0.28	0.78
Liabilities/Provincial GDP	16.7%	9.3%	0.27	0.78
State Equity/Provincial GDP	6.6%	3.8%	0.28	0.78
Investment/Provincial GDP	0.3%	-0.8%	2.34	0.02
Construction Outlays/Provincial GDP	2.6%	-0.4%	0.86	0.39
Assets under Management/Provincial GDP	0.8%	0.6%	0.25	0.80

Data is from the GSO Enterprise Census (2008-2010). Using the annual census, we create aggregate measures for centrally-managed SOEs in each province. We standardize both figures by nominal, provincial GDP.