

Fourth Biennial  
Convention

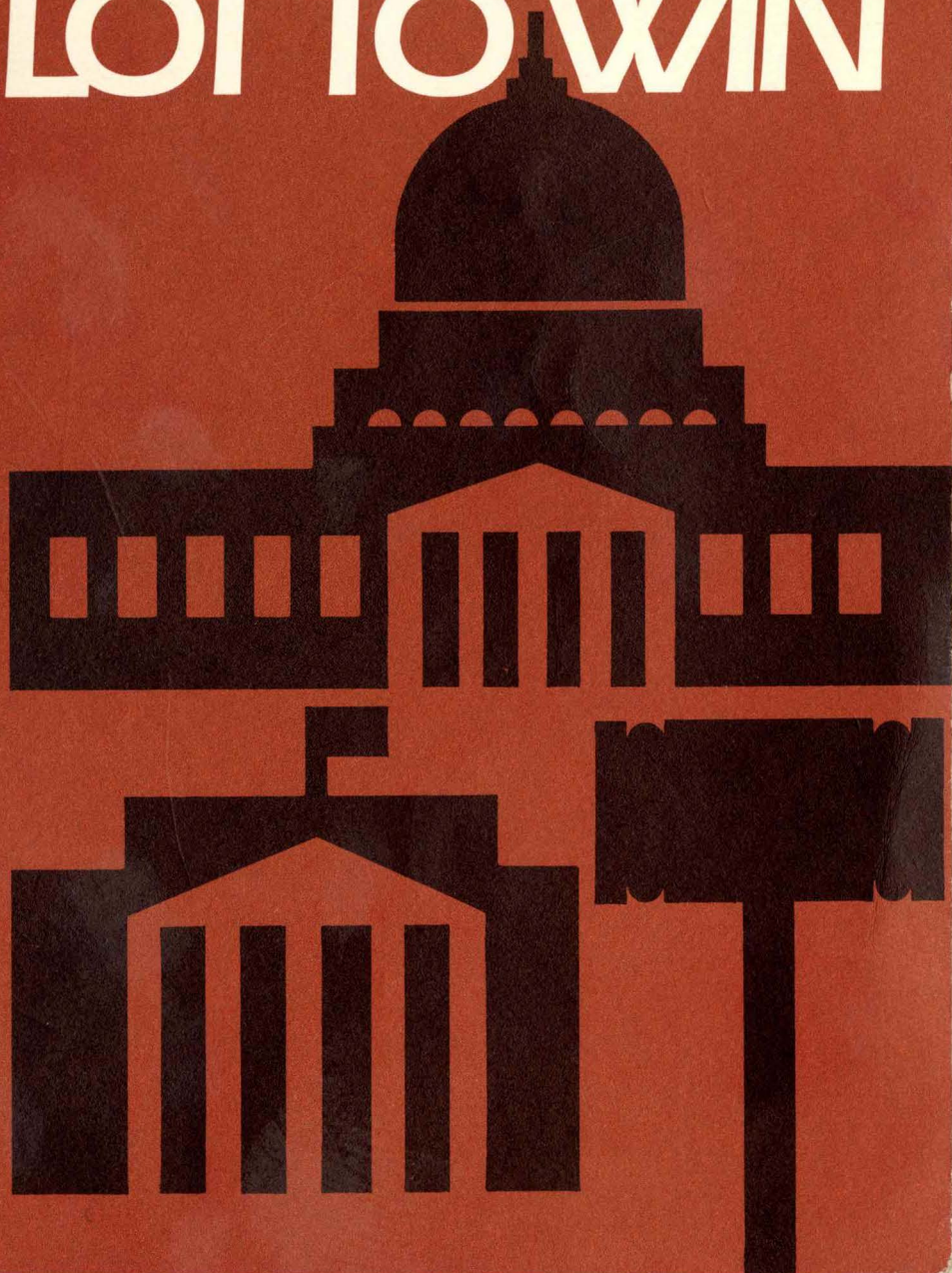
July 13-  
15, 1979

Cincinnati,  
Ohio

*Handwritten signature*  
2652

National  
Women's  
Political  
Caucus

# WE HAVE A LOT TO WIN



*Thank you  
for your  
support  
of the  
National  
Women's  
Political  
Caucus  
and  
the  
National  
Women's  
Political  
Caucus  
Fund*

*6665-862  
/202*

The Officers, Board Members and Staff  
of  
The National Women's Political Caucus  
salute

**Jane Pierson McMichael**  
(former NWPC executive Director)

and

**Lael Stegall**  
(former NWPC development director)  
for their dedication to  
the cause of equality for all

# Table of Contents

Welcome, Convention Chair.....	1
Greetings from the NWPC Chair.....	2
NWPC Makes Headlines, A Press Report.....	4
NWPC History.....	5
NWPC Program Areas	
Membership.....	7
State Chair List.....	8
Finance.....	10
Democratic Women's Task Force.....	15
Republican Women's Task Force.....	16
Legislative Committee.....	17
Judicial Appointments Project.....	18
Coalition for Women's Appointments.....	19
Women's Political Times.....	20
Convention Information	
Convention Schedule.....	21
Plenary Session Agenda.....	26
Convention Center Layout.....	27
Seminar and Workshops.....	28
General Information.....	31
Convention Committee.....	32
NWPC ERA Fund.....	33
NWPC Support Committee.....	35
NWPC Administration and Structure.....	36
NWPC Staff Report.....	38
Advertisers	

# Welcome to Cincinnati



Cathie Hartnett

## **Dear Friends;**

Welcome, everyone, to Cincinnati and the fourth biennial convention of the National Women's Political Caucus.

Yes, the past months have been hectic. The myriad of details that are essential to produce an event of this proportion sometimes seemed overwhelming. But with the help of so many of you, we have achieved our goal—a coming together for each of us to share experiences, to exchange information, to learn from stimulating resources—and to have a good time with women from all parts of the country.

This convention is an unique opportunity to sharpen your political skills, to develop tools to aid your Caucus's growth, to learn more about the critical issues facing women—and thus every American—and to work toward the common goals of power for all feminists and feminists in all places of power.

I want to take this opportunity to salute the many people who have worked to make this convention the best in our history . . . the tri-state area, Ohio, Kentucky and Indiana Caucus members, the Caucus staff, and the volunteer assistance from Caucus members everywhere has made the convention committee's job infinitely easier.

Thank you all.

When you return home after this meeting, I hope you will feel renewed and re-energized, ready to continue your crucial work in seeing that women are in the Constitution, in the Congress and in your local and state offices.

**We Have A Lot to Win!**

Cathie Hartnett  
Convention Chair

# Greetings from The Chair

With my  
love and  
respect  
Millie Jeffrey



Millie Jeffrey

Strong, bold, energetic!

That's how the members of the National Women's Political Caucus will enter the decade of the 1980's as we continue our pursuit for equality and power for women.

And as we face the challenges of the future, we reflect briefly on the past. In our hearts are the memories of those early dauntless leaders—Harriett Tubman, Susan B. Anthony, Margaret Sanger, Alice Paul, Mother Jones and many more whose militant determination won us victories which paved the way for today's successes.

Also in celebrating our birthday here in Cincinnati, we can be proud that we are closely adhering to goals that were set for us eight years ago by our founding mothers—to end sexism, racism, poverty, and violence in our society.

A more recent memory is the unprecedented National Women's Conference in Houston two years ago . . . the most representative gathering of women ever assembled and a beautiful panoply to feminism and womanhood. A plan of action was adopted with overwhelming support that has become the constitution for the women's movement.

The spirit of Houston lives on. On a hot, muggy Washington day last June 9, the first anniversary of the death of Alice Paul, over 100,000 women, men and children marched on the Capitol to put women in the Constitution . . . after 200 years of exclusion.

That march was the kick-off for one of the most extraordinarily unified and intensive lobbying campaigns ever carried out—for the extension of the ERA ratification period. With support from labor, religious, civil rights, environmental, health, and other public interest as well as women's groups. Congress, despite heavy opposition, responded and extended the deadline to June 20, 1982.

In San Jose in 1977, ratification of ERA was made the number one priority for the NWPC. During the past two years, Caucus efforts to carry out this mandate have blossomed. With the assistance of the newly created NWPC ERA Fund state and local caucuses gained a sophistication regarding political techniques, targeted districts, recruited candidates and managed campaigns for carefully selected pro-ERA supporters. Contributing over \$350,000 in money and technical support, we won 75 percent of our races.

While impressive, unfortunately, the increase was not enough to overcome the political chicanery of the few wheeler-dealers who trade off cheap favors for our basic rights.

ERA is still a priority for us. As long as that 38th state remains unratified, we are an unratified nation. We will develop a national focus and mobilize for 1980 electoral victories.

The appointed arena has not been overlooked by the Caucus. By initiating the Coalition for Women's Appointments, we won dozens of posts for women to top policy positions in the Carter administration, not only in Washington, but also in regional offices. Two of the Caucus founders, Roxanne Conlin and Virginia Dill McCarty were the first women ever to be named U.S. Attorneys in Iowa and Indiana, respectively.

With our appointment successes in administration spots, we then took on the U.S. judicial system, an exclusive, all-white, all-male sexist bastion. In 200 years only 24 women have served on the federal bench. Systematically we attacked this area through the

NWPC Judicial Appointments Project to help women learn the ropes and get through the nominating process. We've opened the door a crack. While many women are being nominated and appointed, more are being overlooked. We are committed, however, to enhancing the quality of judges for all Americans by making the courts representative of the diversity of our country through the appointment of women and minorities.

In the midst of our successes, naturally, we are bound to experience some set-backs. But one of the most debilitating to feminists around the country was the summary dismissal of Bella Abzug, chair of the National Advisory Committee for Women, by President Carter. Twenty-four of the 40 members of that Committee resigned in support of Bella and Co-Chair Carmen Delgado Votaw, and to protest the presidential dictum that the Committee should not speak out on the economy, the budget and inflation programs as they impact women. Bella has always been a controversial woman . . . but she has always been her own woman and our own woman. She has stood for change and for issues that affect all humanity regardless of the consequences. And we salute her.

We can be proud, too, of the NWPC legislative program, of the best feminist political newspaper in the country—**WOMEN'S POLITICAL TIMES**—and of the advances made in improving our internal operations in the organization. A new membership brochure and organizing manual will help new and seasoned caucuses grow and be even more effective.

In these two years we have built a team . . . delegating responsibilities, sharing leadership and returning decisions on policy and programs to the members.

We have been blessed with a magnificent staff and with hundreds of capable volunteers.

These past two years have been exciting ones for me, not only for our accomplishments but most of all for having the opportunity to work with you—so many, dedicated, talented women. Wherever I go, Caucus women inspire and sustain me. You are truly marvelous, bright, able, practical, idealist and caring. You nurture each other in a sharing and loving way.

Thank you all.

We face 1980 strong, well prepared and resilient.

Millie Jeffrey  
NWPC Chair



# NWPC Makes Headlines

**Her Goal: Women In Politics**  
By Judy J. Newmark  
Of the Post-Dispatch Staff

**New Success for Women: More Seek Elective Office**  
in part

**Democrats Move To Give Women Convention Seats**

**Five learned so well that they got elected**  
Women's political class

**Caucus to Map Tactics On Missouri ERA Fight**

**Republican Women Take 62 New Legislative Seats**

**Wide Search Is On for U.S. Judges**

**Get Women Candidates for**

**Ellen Malcolm**  
NWPC Press Coordinator

When the NWPC talks people listen. The American public has been hearing a lot in the last two years from the NWPC. Caucus members have been making headlines nationwide informing voters that women are serious about gaining political power.

Getting the story out has been the job of the Public Information Committee chaired by Virginia Karp, Ohio, and Marilyn Adams, New York, and coordinated through the national office by Ellen Malcolm.

Delegate selection, the Judicial Project and the ERA have been the top stories for the NWPC.

# NWPC History



Eight years ago The National Women's Political Caucus stated its goal, "... to awaken, organize, and assist the vast political power of women."

With this, the organization's fourth biennial convention, the membership has met its goal and has proved beyond question that the Caucus is the recognized political arm of the women's movement.

From the very beginning, Caucus members set out to demand that American women, who make up the majority of the country's voting population, have an equal voice in policy decisions and equal representation in all legislative bodies.

Within months of the NWPC organizing conference in July, 1971, Caucus representatives were meeting with presidential contenders to ascertain their commitment to a greater role for women in their campaigns, in the conventions, and their administrations, if elected.

In 1972, Caucus activities resulted in doubling the women delegates to the Republican National Convention and tripling the women at the Democratic convention. In March of that year, Congress sent the Equal Rights Amendment to the states for ratification, and



Liz Carpenter

Caucus members launched a massive ERA ratification campaign. That campaign took on a new dimension in 1978 when the organization, in coalition with hundreds of others, won a three-year extension of the ratification period.

NWPC again made history in 1973 by holding the first national political convention of women in over one hundred years at Houston, Texas. Frances "Sissy" Farenthold was elected first NWPC chair. In 1974 the Caucus launched its "Win With Women," campaign to focus attention on women candidates who had decided to run, to encourage other women to run, and thus establishing an electoral strategy by which women would gain power.

The outcome of the 1974 elections resulted in a 26 percent increase in the number of women serving in state legislatures, and a 36 percent increase in statewide officers.

As in 1972, the two national political parties were the targets for the Caucus work in 1975. Then, the Republican-Women's Task Force and the Democratic Women's Task Force were established to aid in the multi-partisan activity of the Caucus, permitting Caucus Democrats and Republicans to organize separately for their respective party activities.



Susan B. Anthony



Gloria Steinem

The Caucus, at its second national convention in Boston in 1975, was the first organization to create a political campaign committee to raise money for candidates. Audrey Rowe was elected chair.

Caucus leaders met with candidate Jimmy Carter in 1976 to hammer out an agreement on the role of women in his administration. In the Republican arena Caucus members lobbied strongly and successfully to keep the Equal Rights Amendment in the Republican platform. It was also in 1976 that the Caucus played a catalyst role in the creation of the Coalition for Women's Appointments.

San Jose, California, rolled out the welcome mat in 1977 where more than 1,500 women attended the Caucus's third biennial convention. ERA ratification was made the organization's number one priority and maximum resources were allocated.

Mildred Jeffrey was elected chair and the Caucus launched into major new program areas with the Judicial Appointments Project and expansion of the Caucus publication

## NWPC Membership



"The Caucus as an organization has something to offer everyone. You don't need to be a political expert to join, but you'll soon become one."

The Caucus began with 271 women in 1971. In eight years, the organization has grown to 45,000 members and supporters. Since the 1977 convention alone, membership has increased by one third.

This is due in large part to the sustained effort by volunteers in state and local caucuses which now number over 300 in 38 states, the District of Columbia and Capitol Hill.

The strength of any organization lies in its members, and the Caucus is no exception. Programs that attract activist women, whether they be political neophytes or veterans, are part of a local and state caucus agenda. Women have joined the Caucus in order to work side by side in ERA ratification and rescission battles; in recruiting candidates and running campaigns; in getting out the vote and monitoring local party activities; in lobbying for feminists appointments to boards and commissions, and in traipsing through the halls of the state legislature to see that important human issues are not lost.

The membership committee, with Peg Cass as chair, along with staff members Grace Orlansky and Paula Pucillo, answer questions on caucus policies and procedures and assist with caucus organizing and development. They are joined by other standing committee and staff members who share their expertise in the areas of fund raising, lobbying, public relations, appointments procedures and political action.

During the past year, two important membership tools were published—a national membership brochure adaptable for state and local use; and a basic organizing manual which contains specific program suggestions. Plans are to supplement this manual with more detailed "how to be effective" sections in each of the Caucus's major project areas.

Also during the past year, with the assistance of Erla Alexander, a new membership reporting procedure was introduced in order to increase the accuracy and facilitate the exchange of membership information between the national office and state and local caucuses.

All staff members are available to Caucus members for consultation on their particular areas of expertise.



Grace Orlansky  
Membership Director



Paula Pucillo  
Membership Associate

# State Chairs

## ALABAMA

Marilyn Williams  
3424 Altamont Road  
Birmingham, AL 35205

## ARIZONA

Elly Anderson  
6550 Camino Arturo  
Tucson, AZ 85718

## ARKANSAS

Pat Youngdahl  
7108 Rockwood Road  
Little Rock, AR 72207

## CALIFORNIA

Anne Charles  
33 Terrace Avenue  
Kentfield, CA 94904

## CONNECTICUT

Christine Pattee  
50 Forest Street C-1  
Hartford, CT 06105

## COLORADO

Gerry Bean  
2755 Julliard Street  
Boulder, CO 80303

## DELAWARE

Vivian Houghton  
9 Varmar Drive  
Swanwick Gardens  
New Castle, DE 19720

Linda Long—Co-Chair  
607 Mt. Lebanon Road  
Wilmington, DE 19803

## DISTRICT OF COLUMBIA

Cleo Lewis  
2600 Sherman Ave., NW #201  
Washington, DC 20001

## CAPITOL HILL

Ms. Jennifer Oldfield  
c/o Senator Hatfield  
463 Russell HOB  
Washington, DC 20510

## FLORIDA

Dr. Marilyn W. Whisler  
822 Guthrie Court  
Winter Park, FL 32792

## GEORGIA

Beth Schapiro  
1992 McLendon Ave., NW  
Atlanta, GA 30307

## IDAHO

Ann Voilleque  
1425 E. 16 Street  
Idaho Falls, IDA 83401

## ILLINOIS

Teresa L. Wedoff  
1182 Home Avenue  
Oak Park, ILL 60304

## INDIANA

Molly Rucker  
5722 Radnor Road  
Indianapolis, IN 46226

## IOWA

Nancy Norman-Uhl  
3103 Elmwood  
Des Moines, IA 50312

## KANSAS

Vicki Catlett-Newby  
1539 N. Pershing  
Wichita, KS 67208

## KENTUCKY

Kelly Clark  
133 North Ashland  
Lexington, KY 40502

## LOUISIANA

Lynne Hair  
3210 N. Stevendale  
Baton Rouge, LA 70815

## MAINE

Jane Riley  
3 Chestnut Street  
Hallowell, ME 04347

## MARYLAND

Claire Bigelow  
4305 Tuckerman  
University Park  
Hyattsville, MD 20782

## MASSACHUSETTS

Sally Lunt  
75 Bradford Road  
Weston, MA 02193

## MICHIGAN

Pat Widmayer  
826 Sunset Lane  
East Lansing, MI 48823

## MINNESOTA

Marilyn Bryant  
17819 Maple Hill Road  
Wayzata, MN 55391

Carol Connolly  
1382 Summit Avenue  
St. Paul, MN 55105

## MWPC

1821 University Avenue  
Room S-291  
St. Paul, MN 55104

## MISSISSIPPI

Linda St. Martin  
P.O. Box 5433  
University, MS 38677

## MISSOURI

Erika Fox  
214 W. Concord  
Kansas City, MO 64112

## MONTANA

Jan Gerke  
1014 Cherry  
Helena, MT 59601

## NEBRASKA

Mary Ellen Drickey  
2102 S. 61 Street  
Omaha, NEB 68106

## NEVADA

Ellen Pillard—Chair  
1420 Earl Drive  
Reno, NV 99503

Pat Bates—Co-Chair  
701 Pioche  
Carson City NV 89701

## NEW HAMPSHIRE

Donna McEachern  
50 Meadow Road  
Portsmouth, NH 03802

## NEW JERSEY

Kathy Brock  
12A English Village #4B  
Cranford, NJ 07016

## NEW MEXICO

Susan Thom-Loubet  
Box 657  
Cedar Crest NM 87008

## NEW YORK

Pearl Kurland  
4 Jackson Ct.  
Guilderland, NY 12084

## NORTH CAROLINA

Grace Rohrer  
1805 Burningtreet Drive  
Chapel Hill, NC 27514

## NORTH DAKOTA

Joan Senzek Solheim  
420 W. Thayer Avenue  
Bismarck, ND 58501

## OHIO

Susan Schnebelt  
8476 Myrtlewood  
Cincinnati, Ohio 45286

## OKLAHOMA

Becky Patten  
124 East Main  
Norman, OK 73069

## OREGON

Ann Greenfield  
2933 NE 35 Street  
Portland, OR 97212

## PENNSYLVANIA

Elaine Herald  
917 Frick Bldg.  
Pittsburgh, PA 15219

## RHODE ISLAND

Barbara Colt  
288 Spenser Avenue  
E. Greenwich, RI 02818

## SOUTH DAKOTA

Addie Hayes  
2007 E. Dakota  
Pierre, SD 57501

## TENNESSEE

Penny Edwards  
208 Lynnwood Terrace  
Nashville, TN 37205

## TEXAS

Anita Lang  
302 Kingsman  
Converse, TX 78109

## UTAH

Jan Johnson  
P.O. Box 8745  
Salt Lake City, UT 84108

## VERMONT

Daphne Gratiot  
Otis Hill Farm  
Woodstock, VT 05091

## VIRGINIA

Sarah Brite  
121 Campbell Street  
Danville, VA 24541

## WASHINGTON

Barbara Vanderkoik  
2301 Fairview East #407  
Seattle, WA 98102

## WEST VIRGINIA

Carolyn Snyder  
P.O. Box 47  
Charles Town, W.VA 25414

## WISCONSIN

Liesl Blockstein  
4833 Tokay Blvd.  
Madison, WI 53711

## WYOMING

Jamie Ring  
520 Parkview Drive  
Casper, WY 82601



# NWPC Finance

Politics costs money . . . lots of money . . . and especially for women.

A joint study done by the NWPC and Common Cause found that women candidates raised only 75 percent of the total amount raised by male candidates. And when women run for office, they are almost always challengers striving to defeat incumbents. Challengers generally raise only half what incumbents raise.

Money is crucial not only to the goal of the NWPC—to elect feminists to office—but also for the very existence of the organization.

To fund, staff, and service a national membership organization, and two political committees takes creativity, persistence, determination, sensitivity, and oftentimes the discovery of unknown skills.

The NWPC has been especially fortunate for the past six years to have had the diversified talents of Lael Stegall, who together with Jane McMichael set the stage for the Caucus's solvency. Newly hired development director, Elois King, with her associate, Ann Monnig, are continuing the fund raising activities.

A carefully constructed program budget was assembled by Planning and Development chair, Carol Silverthorn; Finance chairs, Retha Ott, and Erla Alexander matched income projections to budget expenditures. Quarterly reviews are conducted by members of the Administrative Committee while bi-weekly checks are made by the executive director and associate director. The Caucus fiscal year is from January 1 to December 31.

There are seven major sources of income: special events, direct mail campaigns, individual and institutional donors, membership dues, special educational projects, advertising revenue and a door-to-door canvass.

In 1979 the Internal Revenue Service gave NWPC the go ahead to activate the NWPC Leadership Development, Education and Research Fund, a new educational arm, contributions to which are tax deductible.

## Special Fund Raising Mechanisms

### Advisory Board

The mandate of the Advisory Board is the financial growth and development of the Caucus. Board members are asked to make a commitment worth \$5,000 during their two-year term.

The board is composed of NWPC founders, immediate past members of the Administrative Committee, six leaders of national women's organizations and ten or more individuals who are committed to the goals and purposes of the Caucus. The board is chaired by the immediate past Caucus chair.

### ERA Door-To-Door Canvass

A first for any organization committed to the passage of the Equal Rights Amendment was undertaken by the NWPC ERA Fund, which contracted with Women's Resources, Inc., an independent group of highly trained, seasoned canvassers. Door-to-door canvassing has been in operation in New Jersey, New York, Connecticut, Virginia, Maryland, and Pennsylvania. Over 400,000 families have been contacted and \$600,000 raised. Side benefits of this type of fund raising are the one-on-one issue education and the recruitment of members for the local caucuses.

### Corporate Support

Since the creation of NWPC, many individual donors have shared the Caucus cause and commitment. However, during the past two years, the NWPC has reached out to the corporate community for additional support and has received a warm and profitable welcome.

Beginning in 1977 with the printing of the NWPC convention program book, through a contribution made by Atlantic Richfield Company (ARCO), corporate donors have demonstrated increasing responsiveness to programs developed by the NWPC. Within recent months the Caucus concluded an agreement with Philip Morris which has resulted in the distribution of 10,000 copies of a new NWPC brochure, "You Have a Lot to Win: Become a Delegate to Your National Party Convention."

The future is indeed bright for this new area of fund raising for the NWPC.



Audrey Rowe(l) and Coretta Scott King



Elois King

### Events

Some of these events have taken ERA supporters whistle stopping across the country raising money for pro-ERA candidates, the NWPC/ERA Fund and the Caucus coffers.

Sites have been in Illinois, North Carolina, New York, Philadelphia, Minnesota, Washington and California. Liz Carpenter, Jill Ruckelshaus, Marlo Thomas, Sharon Percy Rockefeller, Jean Stapleton, Phyllis Newman, Betty Comden, Joan Hackett, Carol Burnett, Garry Trudeau, Cheryl Ladd, Lola Redford, Bella Abzug, Gloria Steinem, and Candice Bergen, are only a few of the good friends who have lent their names to the Caucus fund raising efforts.

As varied as the people and places have been the events. One idea took the form of a two-day eating binge, a series of restaurant parties, in New York, organized by Arts, Letters and Politics, and supervised by Sarah Kovner and Bobbie Handman. The idea nibbled its way to Philadelphia where Caucus supporters ate their way through some of the "The City of Brotherly (and Sisterly) Love's" best eateries.

Disco fever took over the fund raising efforts with a Summer Disco Prom, "Get the Fever—Disco for ERA," and last fall a Halloween Party.



Ann Monnig



# NWPC 1979 Budget

## 1979 BUDGET SUMMARY OF TOTAL INCOME AND EXPENDITURE PROJECTIONS

### INCOME

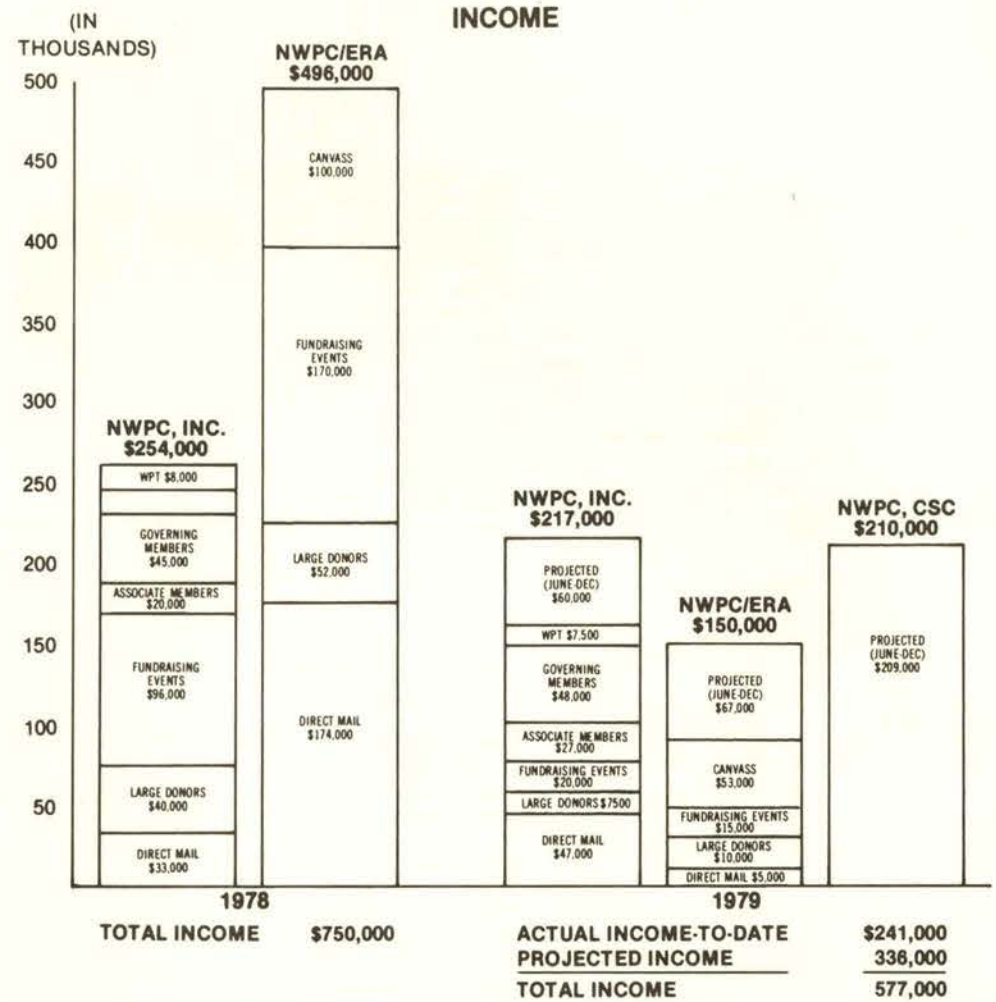
Governing Membership Dues	\$55,000
Dues-Check Off	10,000
Associate Member Renewals	55,000
NWPC ERA Canvass	40,000
Special California ERA Project	100,000
Convention Net Proceeds	10,000
Large Donors	58,000
Convention NWPC Campaign Support Activity	5,000
NWPC Advisory Board Pledges	15,000
Women's Political Times, Advertising Revenues	20,000
Steering Committee Fees	3,000
National Events	60,000
National, State, Local Events	10,000
Merchandise Sales Proceeds	10,000
Lists Purchase For Direct Mail	5,000
Special Projects	101,000
Cash-on-hand	20,000
<b>TOTAL</b>	<b>\$577,000</b>

### EXPENDITURES

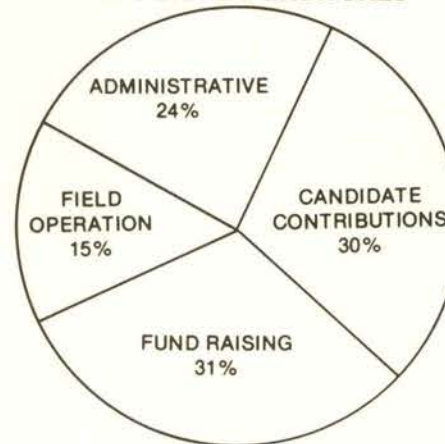
ERA Program	\$150,000
Congressional Candidates	210,000
Women's Political Times	73,000
Membership Outreach Program	38,000
Legislative Program	40,000
Appointments Program	56,000
Special Projects	5,000
<b>TOTAL</b>	<b>\$572,000</b>

The sum \$5,000 is to be applied towards the reduction of the 1978 Accounts Payable (which is approximately \$28,000.)

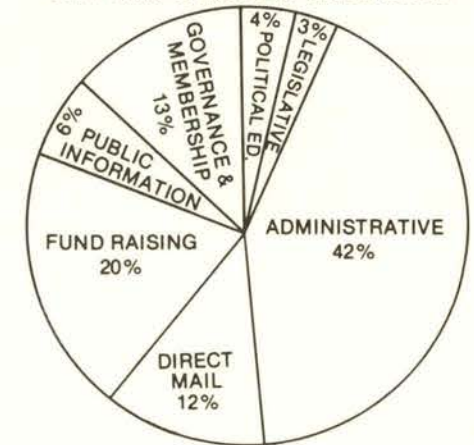
This program budget was developed and presented by the Planning and Development Committee and the Finance Committee at the January 1979 Steering Committee Meeting. It was approved at that meeting.



### 1978 ERA EXPENDITURES



### 1978 NWPC INC. EXPENDITURES



# NWPC Advisory Board

Audrey Rowe, Chair  
 Bella Abzug  
 Owanah Anderson  
 Lupe Anguiano  
 Polly Baca Barragan  
 Nikki Beare  
 Marjorie Benton  
 Candice Bergen  
 Julia Chang Bloch  
 Betty Blumberg  
 Rita Mae Brown  
 Yvonne Brathwaite Burke  
 Liz Carpenter  
 Virginia Carter  
 Marjorie Bell Chambers  
 Peggy Charren  
 Sey Chassler  
 Shirley Chisholm  
 Mary Clarke  
 Roxanne Conlin  
 Elizabeth Dalrymple  
 Myrlie Evers  
 Frances T. Farenthold  
 Brenda Feigen Fasteau  
 Ronnie Feit  
 Barbara Feldon  
 Millicent Fenwick  
 Robert Georgine  
 Patricia Goldman  
 Elinor Guggenheimer  
 Vivian Hall  
 Valerie Harper  
 LaDonna Harris  
 Christie Hefner  
 Dorothy Height

Alice Heyman  
 Elizabeth Holtzman  
 Koryne Horbal  
 Marlene Johnson  
 Victor Kamber  
 Bobbie Green Kilberg  
 Coretta Scott King  
 Odessa Komer  
 Margaret Laurence  
 Frances Lear  
 Norman Lear  
 Elizabeth Loftin  
 Olga Madar  
 Doris Meissner  
 Joyce Miller  
 Midge Miller  
 Lee Novick  
 Jean O'Leary  
 Esther Peterson  
 Lola Redford  
 Ann Roberts  
 Sharon Percy Rockefeller  
 Jill Ruckelshaus  
 John Ryor  
 Marilyn Shapiro  
 Mary Louise Smith  
 Gillian Martin Sorensen  
 Gloria Steinem  
 Marlo Thomas  
 Joan Tobin  
 C. DeLores Tucker  
 Diane Von Furstenberg  
 Carmen Delgado Votaw  
 Julia Montgomery Walsh  
 William Winpisinger  
 Betsey Wright

# Democratic Women's Task Force



Joanne Howes  
 Democratic Task Force Chair

"Since our last convention in 1977, the Democratic Women's Task Force has accomplished one of the major NWPC goals. We have won equal division for delegates to the 1980 Democratic National Convention. This means that there must be an equal number of male and female delegates from each state to the convention. Our efforts are now geared to making sure that it is our women who get in to those slots.

"How we did it was through dogged determination, follow-up, and a constant monitoring of state Democratic parties. These same strategies, plus our now proven ability to get women to work together in coalitions of organizations, unions and interested women working for the advancement of feminists in the political arena will also be the key in winning our next goal of electing 50 women to the U.S. Congress."

Equal division has been the battle cry for the Democratic Women's Task Force since it was first organized in 1975. Only through "dogged determination" has the dream of Eleanor Roosevelt become a reality in her own party.

This tenet finally became a reality at the Democratic Mid-Term conference in Memphis in 1978 where the efforts of Caucus Democratic Task Force members were instrumental in seeing that equal division was part of the Democratic platform for the 1980 elections.

While busy every year keeping an eye out for women in the Party, the Democratic Task Force is now building a full head of steam as the months chug into a presidential election year. Primaries, caucuses, delegate races, presidential candidates, convention operations, floor strategy, vote counts, platform and rules—the political buzz words, are becoming a daily part of a caucus member's vocabulary.

The Task Force is open to all Democratic caucus members. Its current chair is Joanne Howes, a legislative aide to Rep. Barbara Mikulski (D-MD). Howes helps members translate party jargon into effective tools for gaining access to power and representation for feminists.

Sometimes, the task forces use each other for leverage. For example, the 1978 increase of Republican women elected to state legislatures gave Democratic Task Force members the opportunity to push their party to support more Democratic women in 1980.

Task force members will continue to press both the party and present administration to see that there is no regression for women in the Democratic Party.

# Republican Women's Task Force



Susan McLane  
Republican Task Force Chair

"Republican women candidates have proved to be 'electable' all over the country with 62 of the 66 new female state legislators being Republican, as well as the new member of the U.S. Senate, Nancy Kassebaum.

"But the problem still remains to convince the Republican hierarchy that women candidates must be encouraged and supported. The very successful meeting

of the Republican Task Force in January 1979 greatly strengthened our network. With this new strength, task force members are launching an all out effort to increase the number of women delegates at the 1980 Republican National Convention, and to present to the Republican presidential nominees an understanding of the feminist views on issues sure to surface in the upcoming campaign."

Being a feminist in the Republican party is akin to having an "odd" license plant and an empty tank on an "even" day. But today members of the NWPC Republican Women's Task Force no longer do the "lickin and stickin" for the male candidates. They've thrown their jacket dresses and white gloves out the window.

In 1978, 62 of the 66 new women elected to state legislatures were Republicans. Nancy Landon Kassebaum of Kansas broke the barrier of that all-male bastion—the U.S. Senate.

As with the Democrats, Republican Task Force members are well steeped in the intricacies of party politics. Clusters of Republican feminists quietly plotting over lunch and in evening living rooms are credited with the site selection of Detroit, Michigan, a ratified ERA state, for the 1980 national convention.

A plan for delegate selection has already been launched. Susan McLane, chairs the Republican Task Force from her outpost in that number one primary state of New Hampshire. Throughout the months before 1980 McLane serves up spaghetti and the feminist line to the many visitors who come to her state and her kitchen.

Although the GOP has no equal division delegate selection rule, members are strategizing to elect more feminists in 1980.

Networking and mutual support is the key for Republican Caucus feminists and recent successes have been naming Pat Goldman, former Task Force chair, to the National Transportation Safety Board and Pat Bailey to the Federal Trade Commission.

# Legislative Committee



Illinois WPC Chair Teresa Wedoff and member Marsha Gevers lobby Illinois Congressional delegation.

The National Women's Political Caucus's Legislative Committee has continued its aggressive legislative program by piling up its successes on major issues of concern to all women.

In 1978, the ERA extension represented the zenith of persistent effort, follow-up, coalition work, savvy, and energy for Caucus members and everyone concerned with the ongoing fight for equal rights. NWPC legislative efforts were heavily involved in the successful passage of the pregnancy disability and full employment bills, plus bills covering flexi-time and part-time employment for federal employees. The organization's leadership testified and lobbied on CETA re-authorization, reorganization of the government's civil rights enforcement efforts, employment discrimination on Capitol Hill, judicial selection, and the ERA extension. Working on the unsuccessful attempt to modify veterans preference and prevent funding cut-offs for abortion were among other lobbying activities.

An intensive lobbying strategy to avert the drastic budget cuts by the Carter administration proposals was activated by Caucus members. Although unsuccessful, both Congress and the Carter administration were assured that every issue is a women's issue.

The Legislative Committee, under the direction of Susan McLane, Republican co-chair, and Marilyn D. Clancy, Democratic co-chair, and coordinated through the national office by Ann Kolker, has also distributed eight position papers on employment, education, alternative work patterns, social security, pensions, gay rights, credit and campaign financing to all women candidates running for public office and many members of Congress. One of the major projects instigated by the committee was the distribution of a congressional voting chart which was published before the 1978 primary elections and rated the voting records of congressional representatives on their commitment to women. The voting chart proved to be a very useful tool for local caucuses to decide on endorsements for candidates.



Ann Kolker  
Legislation Director

# NWPC Judicial Appointments Project



Pat Bailey  
Legal Support Caucus, Co-Chair



Susan Ness  
Legal Support Caucus, Co-Chair

There were only five women in the entire federal judiciary in 1977 when the Judicial Appointments Project began. By October, there will be as many as 35 due to the watchdog efforts of the NWPC Judicial Appointments Project.

Working closely with the Legal Support Caucus membership, the project has formed a nationwide network to recruit and assist women through the appointments process. Project workers have also brought public attention to the shocking under-representation of women on the state and federal bench, have educated women on the selection process, and have worked closely with the Carter administration and senators to insure that the selection process is fair and open.

The NWPC has been the chief monitor of the appointments process, beginning with NWPC Chair Mildred Jeffrey's testimony before the opening hearing of the Senate Judiciary Committee where she critiqued the selection process. This monitoring process will continue as the NWPC members across the country gain the expertise to make the difference in state judicial elections.

Susan Ness, chair of the NWPC Legal Support Caucus, Vice Chair Pat Bailey, and others, have provided the project with leadership.

Tax deductible contributions to the NWPC Leadership Development, Education and Research Fund have provided major support for this project.

# Coalition For Women's Appointments

The Coalition for Women's Appointments, a network of over 60 national women's organizations, was founded in 1976 in response to President Carter's commitment to appoint women in significant numbers to key posts within the federal government.

Housed and staffed by the NWPC, the Coalition monitors government appointments and civil service developments which act as the key to women's access to top level positions. Through monthly meetings, the coalition alerts members to upcoming vacancies. This network of women throughout the government and of state and local talent banks provides the White House and federal agencies with a continuing flow of women's names.



# Women's Political Times



Sharon Flynn



Robbie Snow



Carol Cladouhos

Published by National Women's Political Caucus, Inc. **Women's Political Times** Vol. 8 No. 4 Winter 1978 SAMPLE COPY

### Women Set New Records With '78 Wins

By Robbie Snow

ONCE AGAIN in 1978 women in every state won offices in elective office across the country, setting new records for winning statewide offices.

Contrary to national media reports that women had ground to a halt, they are very active and growing. About women's election progress, says Michael Jeffrey, Staff Director.

"We won 75% of our targeted 524 races, notable breakthroughs in statewide offices include Carol Cladouhos, California State Board of Education, a commissioner of State in Oregon and four new national leadership positions.

"As a result, the number of women in Congress increased to 100.

Democratic Candidate Patricia A. Harris was elected to the 9th Congressional District of New York in an effort comparable to 1977.

She joins Cynthia Brown, a Republican who won the 2nd district of Maine.

Sharon and Fernan, who were each endorsed by the NWPC Campaign Support Committee, represent the kind of candidates the NWPC



had endorsed for the 1978 campaign, and we faced a well-financed opposition. Sharon and Fernan were able to win because of the NWPC ERA Fund, we received help. Supporters were numerous and the technical assistance offered by the Caucus permitted us to utilize their endorsement to the fullest. Funds raised in another key Florida Senate race targeted by the Fund, Bob McLaughlin ran in the primary against pro-ERA incumbent Rep. Patten. McLaughlin characterized the race as a "man's world" race in the state of Florida. He was the only candidate to campaign against Patten. Patten, for one, argued that the reason I defeated that opponent on the primary and a subsequent 2nd-ERA primary was because of the NWPC ERA Fund.

See ERA page 3.

### NWPC ERA Fund Wins in '78

#### 75% of Fund-Supported Candidates Win Seats in State Legislatures

by Sharon Flynn

CAUCUS MEMBERS AND STAFF worked into the late hours election night to learn that the NWPC ERA Fund won 75 percent of its 524 targeted races.

Showing the national media's focus on Republicans vs. Democrats and the various hot ticket races, NWPC had a network of state race contacts in all 50 states to the national office in Washington, D.C.

The NWPC ERA Fund which contributed a total of \$200,000 in state legislative races won 156 of 167 targeted races.

"Victory was particularly sweet for us," states Sharon, Staff Director. "We know we can't win if we don't have the NWPC ERA Fund. We can't win if we don't have the NWPC ERA Fund. We can't win if we don't have the NWPC ERA Fund."

See ERA page 3.

Sharon Percy Roetzler talks about ERA extension... page 19

"People and Politics" - Who's doing what, where... page 13

NWPC Advisory Board... an interesting group... pages 5, 10 & 11

A look at the record of the 90th Congress... pages 14 and 15

See ERA page 4.

A major project for the NWPC is the expansion and sophistication of its major ongoing publication, **Women's Political Times**, which has been hailed as the best feminist political newspaper in the country.

Well into its fourth year of publishing, the **Times** has grown from eight to 24 pages, and from a quarterly to bi-monthly schedule.

Past issues have included stories on women candidates, ERA status, appointed women, women and the national parties, political alerts, and Congressional action on legislation, news from member caucuses and coverage of the men and women who are affecting positive change on the political make up of the country.

Sharon Flynn, presently acting executive director, is the creator and editor of the paper. Robbie B. Snow is the managing editor. Numbers of other staff, as well as caucus friends, contribute to every issue.

Carol Cladouhos, advertising manager, is responsible for the tremendous 85 percent increase in advertising revenues over the past two years.

# NWPC Convention Schedule

## THURSDAY, JULY 12

Noon-10:00 PM	REGISTRATION	Convention Center— Lower Lobby
10:00 AM-11:30 AM	Nominations Committee	To Be Announced
11:00 AM-12:30 PM	Political Action Committee	To Be Announced
Noon-6:00 PM	Hospitality Suite	Cabana A&B— 4th Floor at Stouffer's
1:00 PM-5:00 PM	Western States Regional Meeting	Stouffer's Ivory Rm. B
2:00 PM-5:00 PM	Credentials Committee Meeting	To Be Announced
5:00 PM-6:00 PM	Press Volunteers Meeting	Convention Center Rm. 222
6:00 PM-8:30 PM	Administrative Committee Meeting	Stouffer's Ivory Rm. B
9:00 PM-Midnight	Riverboard Party	Public Landing Near Riverfront Stadium

## FRIDAY, JULY 13

7:30 AM-8:00 PM	REGISTRATION	Convention Center— Lower Lobby
7:30 AM	Breakfast Press Briefing	To Be Announced
9:00 AM-10:00 PM	Hospitality Suite	Cabana A&B— 4th Floor at Stouffer's
11:00 AM-9:00 PM	Exhibits, including State Caucuses	Exhibitors—check in at Grand Ballroom— Stouffer's Mezzanine

## 8:45 AM-10:15 AM WORKSHOP SESSION I Convention Center

### Political Skills:

Fund Raising/Events	Rm. 213
Media Coverage/Advertising	Rm. 215
Image Awareness	Rm. 219
Campaign Operations	Rm. 229
Campaign Planning/The Basics	Rm. 225
Warming the Bench: Electing Women to the Judiciary	Rm. 221

### Caucus Building Skills:

Programs and Membership for Active Caucuses	Rm. 217
Organizational Communication	Rm. 227

WOMEN AND THE POLITICS OF ENERGY ..... Bronze Rm. A

10:30 AM-Noon WORKSHOP SESSION II Convention Center

**Political Skills:**

- The Right Wing ..... Rm. 211
- Fund Raising/Planning and Operations ..... Rm. 213
- Direct Voter Contact ..... Rm. 215
- Public Opinion Surveys Part I ..... Rm. 217
- Warming the Bench: Appointing Women to the Judiciary ..... Rm. 221

**Caucus Building Skills:**

- Programs and Membership For New or Inactive Caucuses ..... Rm. 219
- Leadership Development ..... Rm. 227
- Organizational Effectiveness ..... Rm. 229
- Publicity, Public Relations and Media Planning ..... Rm. 225

Noon-2:00 PM TRI-STATE ELECTED WOMEN'S LUNCHEON Convention Center—South Meeting Rm. 209

2:15 PM-3:45 PM WORKSHOP SESSION III Convention Center

**Political Skills:**

- Direct Voter Contact ..... Rm. 213
- Media Coverage/Advertising ..... Rm. 215
- Image Awareness ..... Rm. 219
- Who We Are: Women Voters/Women Candidates ..... Rm. 229
- Campaign Planning/A Clinic for Candidates and Campaign Managers ..... Rm. 225

**Caucus Building Skills:**

- Leadership Development ..... Rm. 211
- Programs and Membership for Active Caucuses ..... Rm. 217
- Programs and Membership for New or Inactive Caucuses ..... Rm. 227
- Successful Fund Raising: More Money, More Members, More Fun ..... Rm. 221

2:15 PM-3:45 PM SEMINARS: Stouffer's

- THE INTERNATIONAL YEAR OF THE CHILD:  
American Children, Privileged or Not? ..... Bronze Rm. A
- WOMEN IN SPORTS ..... Bronze Rm. B

4:00 PM FILMS Convention Center

- "With Babies and Banners" ..... Rm. 211
- "The Nestle Boycott" ..... Rm. 211

- Black Caucus ..... King Conference Suite, 4th Floor
- Lesbian Caucus ..... Ivory Rm. A
- Asian Caucus ..... Bamboo Rm. A
- Chicana Caucus ..... Bamboo Rm. B
- Older Women's Caucus ..... To Be Announced
- Legal Support Caucus ..... Convention Center Rm. 217
- Welfare Reform Task Force ..... Convention Center Rm. 223

5:30 PM-6:30 PM CONVENTION COMMITTEES Convention Center

- Resolutions ..... Rm. 219
- Nominations ..... Rm. 215
- Bylaws ..... To Be Announced
- Rules ..... To Be Announced
- Elections ..... To Be Announced

6:00 PM-8:00 PM CINCINNATI CHILI CHALLENGE DINNER Convention Center South Meeting Rm. 209

8:00 PM-11:00 PM ORIENTATION TO PARTY CONVENTION DELEGATE SELECTION Stouffer's

- Republican Women's Task Force ..... Bronze Rm. A
- Mary Crisp, co-chair Republican National Committee, speaker
- Democratic Women's Task Force ..... Bronze Rm. B
- Barbara Mikulski, Democratic Congresswoman, Maryland, speaker

11:00 PM-Midnight SPECIAL MEETING FOR DELEGATION CHAIRS AND STATE CAUCUS CHAIRS Stouffer's Ivory Rm. B

**SATURDAY, JULY 14**

- 7:30 AM-8:00 PM REGISTRATION Convention Center—Lower Lobby
- All Day Resolutions Committee Convention Center—Rm. 225
- 7:30 AM-9:00 AM Workshop: "State Caucus Political Committees" To Be Announced
- 9:00 AM-Midnight Hospitality Suite Cabana A&B—4th Floor at Stouffer's
- 8:30 AM-10:00 AM ERA Briefing: Rescission and Ratification Stouffer's Bronze Rm. A

10:00 AM-Noon CONVENTION SESSION: Opening Ceremony, Speakers, Business CONVENTION CENTER

Noon-2:00 PM ERA LUNCHEON Convention Center—South Meeting Rm. 209

2:00 PM-4:30 PM Convention Session Reconvenes Speakers, by laws, resolutions Convention Center

2:15 PM-3:45 PM WORKSHOP SESSION IV Convention Center

**Political Skills:**

The Right Wing . . . . . Rm. 211  
Campaign Operations . . . . . Rm. 215  
Public Opinion Surveys Part II . . . . . Rm. 217  
Who We Are: Women Voters, Women Candidates . . . . . Rm. 227

**Caucus Building Skills:**

Organizational Communication . . . . . Rm. 213  
Publicity, Public Relations and Media Planning . . . . . Rm. 219  
Organizational Effectiveness . . . . . Rm. 229  
Successful Fund Raising: More Money, More Members  
More Fun . . . . . Rm. 221

2:15 PM-3:45 PM SEMINARS Stouffer's

BREAKING THE BARRIERS I:  
Women in Non-Traditional Jobs . . . . . Bamboo Rm. A&B  
BREAKING THE BARRIERS II:  
Women in Non-Traditional Jobs . . . . . Ivory Rm. A&B

4:00 PM FILMS Convention Center

"With Babies and Banners" . . . . . Rm. 211  
"The Nestle Boycott" . . . . . Rm. 211

4:30 PM-6:30 PM RECEPTIONS

Judge's Reception . . . . . To Be Announced  
Elected Women's Reception . . . . . Netherlands Hilton  
Continental Room  
Appointed Women's Reception . . . . . Terrace Hilton  
Skyline Room

7:30 PM-11:00 PM CONVENTION SESSION RECONVENES Convention Center

Report of Nominating Committee,  
Speeches by Candidates for NWPC Offices  
Continuation of By-laws and resolutions

SUNDAY, JULY 15

9:00 AM-5:00 PM Hospitality Suite Cabana A&B—4th Floor at Stouffer's

10:00 AM-2:30 PM CONVENTION SESSION: Speakers, Voting for NWPC Offices, Resolution, Closing Ceremony Convention Center

2:30 PM ADJOURNMENT Convention Center

3:00 PM Films Convention Center—Rm. 211  
"With Babies and Banners"  
"The Nestle Boycott"

3:00 PM-5:00 PM Steering Committee Meeting Sourffer's Ivory Room A



# Plenary Session Agenda

## SATURDAY, JULY 14

### 10:00 AM to Noon: OPENING CEREMONY

Mildred Jeffrey  
 NWPC Chair officiating  
 Call to Order  
 Adoption of Credentials  
 Adoption of Rules  
 Adoption of Agenda

Gertrude Donahey  
 Ohio State Treasurer

Bobbie Sterne  
 Mayor of Cincinnati

#### Keynote Speaker:

Patricia Harris  
 Secretary U.S. Department of Housing  
 and Urban Development

### Noon: TRI-STATE LUNCHEON

### 2:00 PM to 4:30 PM: SESSION RECONVENES

Elizabeth Holtzman  
 Congresswoman New York State

Business—By Laws

Norma Paulus  
 Oregon Secretary of State

Hon. Rita Davidson  
 Associate Judge  
 Maryland Court of Appeals

### 4:30 PM: RECESS

### 7:30 to 11:00 PM: SESSION RECONVENES

Polly Baca-Barragan  
 Colorado State Senator  
 Report from NWPC  
 Nominations Committee  
 NWPC Candidate Speeches  
 Continuation of By Laws  
 Resolutions

## SUNDAY, JULY 15

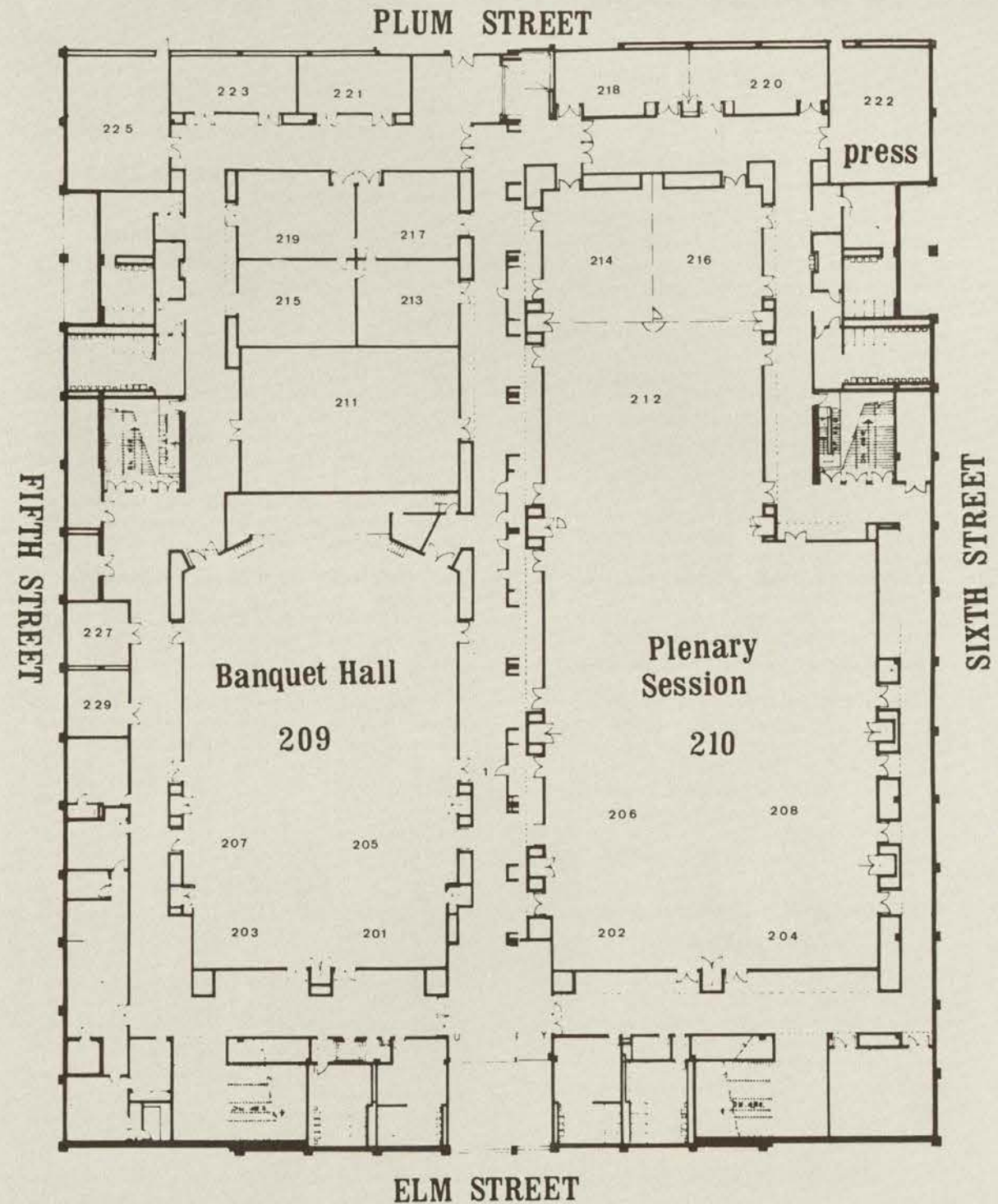
### 10:00 AM: SESSION RECONVENES

Gloria Steinem  
 Editor of Ms.  
 Elections-Balloting  
 Resolutions

Bella Abzug  
 Co-Chair Women USA

### 2:00 PM: ADJOURNMENT

## Convention Center Map



# NWPC Convention Workshops and Seminars

## Caucus Building Skills

### **Organizational Effectiveness: Getting Your Caucus to Work**

This workshop will focus on how to assess local and state needs, set goals, assign tasks and the best way to evaluate progress by examining resources and options from the perspective of building a representative caucus.

Marcia Hunt, NWPC Nominating Committee Chair, Moderator.

### **Organizational Communication: How to Find Out What You Need To Know**

Participants will examine organizational structures, formal and informal gathering systems and discuss a practical application of networking.

Dr. Janet Eisea, Professor of Communication, Arizona State University, Moderator.

### **Program and Membership for New or Inactive Caucuses**

Geared toward self-help for new caucuses or inactive ones, this workshop will bring together members of established and active groups with those just getting a foot in the door to exchange ideas and techniques for expansion and rejuvenation. It will also focus on developing programs for the retention of members.

Peg Cass, NWPC Membership Committee Chair, Moderator.

### **"Leadership Development A Look at Power"**

The different types of power will be discussed during this workshop. Group dynamics, problem solving, decision making, conflict resolution, motivating volunteers and accountability will also be major topics of discussion.

Denise Cavanaugh, of Cook Cavanaugh Associates, Moderator

### **Programs and Membership for Active Caucuses**

This is where members of active caucuses will find out, through an exchange of ideas with other

active groups, the best way to remain a vital organization. Discussion will touch on the use of talent banks, political action committees, appointment projects, outreach, coalition building, legislation and endorsement.

Anne Charles, California State Women's Political Caucus Chair, Moderator

### **Successful Fund Raising: More, Money, More Members, More Fun**

"How to" will be the emphasis of this workshop where participants will learn about strategies for locating and dealing with funding sources (corporations, foundations and individuals). Members will discuss such techniques as interviews, proposal writing, grants, and budget monitoring. The preparation of financial statements is also on the agenda.

Joan Flanagan, author of "Grass Roots Fund Raising Book," and Margaret Standish, Executive Director, Playboy Foundation, Moderators

### **Publicity and Media Planning**

This workshop will emphasize ways to gear caucus press coverage toward the political goals of the organization and the role it will play in the 1980 elections.

R. Ellen Boddie, Associate Director of Geo Magazine, former NWPC Press Coordinator, and Roberta Weiner, Press and Public Relations Consultant, Moderators

## Political Skills

### **Campaign Planning: The Basics**

This workshop will take the questions of campaign planning from the first time a woman thinks about running for office to the moment the last vote is counted. It will look at the how's and who's of campaign planning plus the organizational structure of the organization.

Wilma Goldstein, formerly with the Republican Congressional Campaign Committee and Rosalie Whelan, Executive Director, National Women's Education Fund, Moderators

## **Direct Voter Contact Reaching Individual Voters By Mail, Telephone, In-Person**

Participants in this workshop will learn how to "get out the vote" and have it be in their favor. Discussion will cover the use of volunteers, direct mail, the media and candidate contact. It will also cover the use of targeting skills and how they apply to a successful campaign.

JoAnn Davidson, Co-Chair, Franklin County Republican Central Committee and Chair Franklin County Republican Organization and Sandy Schwartz, Government Relations, Ohio Education Association, Moderators

### **Fund Raising**

These workshops will focus on the basis of any campaign—money. Participants will learn about the best ways of raising funds by putting on events, and a second workshop will cover the categories of individual donations and how to gather and respond to contributions.

Betsy Crone, Political and Fund Raising Consultant, Barbara Handman, Fund Raising and Public Relations Consultant, Arts, Letters and Politics, Moderators for Campaign Event Fund Raising Workshops.

Betty King, Special Assistant to District of Columbia Mayor, Marlon Barry, Betsy Crone Moderators for Campaign Fund Raising Planning and Operations.

### **Public Opinion Surveys Part I and Part II**

What the public thinks of both the candidate and her opponent and how to use both positive and negative surveys to the best advantage will be the focus of this workshop.

Wilma Goldstein, Leslie Green, National Survey Research Group, Inc. Dorothea Lynch, Cambridge Survey Research

### **Media Coverage/Advertising**

Whether it be the newspapers covering the candidate's announcement to run or an advertisement on television the media can often win or lose the campaign for inexperienced candidates. This workshop will show the do's and don't's of good media utilization.

Marjory Pizzuti, Press Secretary, Celeste for Governor Ohio, 1978 and Roberta Weiner, Press and Public Relations Consultant, Moderators.

### **Image Awareness**

This workshop will help candidates learn how to put their best side forward at all times. Body language, dress and how to get across the right message will be discussed.

Nancy Thompson, Corporate, Government and Political Image Consultant, Moderator

## **Warming the Bench: Electing and Appointing Women to the Judiciary**

These workshops will focus on the special problems associated with running a judicial campaign on the one hand—financing, bi-partisanship, judicial ethics, "marketing," campaign support. And on the other hand the process of lobbying and coalition building, bar association politics, choosing a candidate, strategies for dealing with selection panels, Senators, the Justice Department, the White House, the American Bar Association's Judiciary panel, and the Senate Judiciary Committee for women seeking appointment to the bench.

Susan Ness, NWPC Legal Support Caucus Chair, Moderator

### **Understanding the Right Wing**

This workshop will discuss the relationship between the right wing and women's movement with the hope that by gaining a better understanding of the right wing, we will then be more prepared to meet the challenges as they arise.

Midge Miller, Democratic Congresswoman from Wisconsin, Moderator.

## Seminars

### **International Year of the Child: American Children— Privileged or Not?**

This seminar will look into why mortality, disease and malnutrition, among American children are higher than in many so-called "developing countries." Participants will also explore the consequences of having every third American child living in a family with an income well below that of acceptable economic sufficiency. They will be discussing why, in a country that has the wealth to raise the standard of living of all children to a decent level, leaders rarely consider the effects of national policy decisions on the lives of children.

Rita Triviz, NWPC Vice Chair, Moderator

### **Breaking the Barriers: Women In Non-Traditional Jobs**

Women from diverse educational, economic and ethnic backgrounds are continually breaking the barriers in the job market. This seminar will

provide panel members a forum to talk about how they broke through those barriers.

Part I, Kate Lloyd, Editor-in-Chief, "Working Woman";  
Part II, Julia Chang Bloch, Deputy Director for Africa,  
International Communications Agency, Moderators

### **Women and the Politics of Energy**

As producers, consumers and educators, women can no longer say they don't understand energy technology and how it applies to their everyday lives. This lack of knowledge has not only affected the consumer habits of the average woman—but also has led to the exclusion of women from energy policy decision making.

This seminar will work on demystifying the complex and technical information which surrounds the energy industry into easily understood language. Panel members will discuss the question

of conservation, renewable energy sources and how energy policy decisions apply to families and community, and their affect on national behavior.

Lola Redford, NWPC Advisory Board Member and  
President of Consumer Action Now, Moderator

### **Women In Sports**

In the nation's schools, in the amateur as well as the professional sports arena, women are expanding their role at every level of sports participation.

What are the problems? What has been the impact of Title IX and what do the current guidelines being considered by the Department of Health, Education and Welfare portend for the future? These questions and others will form the basis of a discussion by women representing ALL levels of sports participation.

Margot Polivy, Counsel, Association for Inter-collegiate Athletics for Women, Moderator

# General Information

### **Badges**

Badges will be required for entrance to all workshops, seminars, and the business session.

### **Registration & Ticket Office**

Convention Center  
Lower Lobby  
Thursday, noon-10 p.m.  
Friday, 7:30 a.m. to 8 p.m.  
Saturday, 7:30 a.m. to noon

### **Hospitality Suite**

Stouffer's Tower, Cabana A & B  
Thursday, noon-6 p.m.  
Friday, 9 a.m.-10 p.m.  
Saturday, 9 a.m.-midnight  
Sunday, 9 a.m.-3 p.m.

### **Child Care Center**

Stouffer's Towers  
The Commodore Room  
Rm 1A-Sleeping Area  
Thursday, 10 a.m.-5 p.m.  
Friday, 9 a.m.-10 p.m.  
Saturday, 9 a.m.-10 p.m.  
Sunday, 10 a.m.-3 p.m.

### **Exhibits**

Stouffer's Grand Ballroom  
North Tower  
Friday, 11 a.m.-8 p.m.  
Saturday 11 a.m.-8 p.m.

### **Convention Staff Office**

Lower Lobby Office Complex  
Cincinnati Troubleshooters Headquarters  
Stouffer's Rooms 1B & 1C

### **Convention Hotels**

Stouffer's Towers 352-2123  
Netherlands Hilton 621-3800

### **Alternate Housing**

University of Cincinnati  
Dormitory telephone number  
465-2442  
contact: Marian Haisley

### **Taxi Service**

Yellow Cab 241-2100  
Checker Cab 621-3600  
Clifton Cab 281-1661  
Radio Cab 244-2900

### **Convention Message Center**

Lower Lobby Outside  
Office Complex

### **Transportation**

Cabs from University of Cincinnati are \$3. City bus service is available.

# Convention Committee

## Convention Committee Chair

Catherine B. Hartnett, Virginia

## Convention Treasurer

Kathy Helmbock, Ohio

## Site & Facilities

Susan Schnebelt, Ohio

## Alternate Housing

Ann Mitchell, Ohio

## Transportation

Patty Burke, Ohio

## Child Care

Norma Baker, Ohio

## Hospitality

Diane Teichman, Ohio

Shirley Mountel, Ohio

## Volunteer Recruitment

Barbara Musselman, Ohio

## Press & Publicity

Karen Scates, Washington, D.C.

Judy Ettenoffer, Ohio

Ginny Karp, Ohio

## Fund Raising Chair

Bobbie Hall, Ohio

## Fund Raising Treasurer

Cindy Mahin, Indiana

## Exhibits

Mary Stanley, California

## Registration

Margaret Ragsdale, Kentucky

## Credentials

Peg Cass, Iowa

## Rules

Angie Flores, Texas

## Resolutions

Anita Lang, Texas

## Elections

Robyn Remaklus, Oregon

## Nominations

Marcia Hunt, California

## Program

Elin Skinner, Minnesota

Anita Nelam, Washington D.C.

## By-Laws

Martha Smiley, Texas

## Program Book

Carol Cladouhos

Robbie Snow

Sharon Flynn

## Workshop & Seminar Coordinator

Deborah Harding

## Convention Coordinator

Kristine Jacobs

# NWPC ERA Fund



Illinois Winners, Carol Moseley Brown (D-24th), (l), incumbent Susan Catania (R-22nd), Barbara Flynn Currie (D-24th).

Because the Caucus wanted to expand its universe for raising money for candidates, the NWPC-ERA Fund was formed by members acting as individuals for the purpose of putting campaign dollars into key unratified state elections and to follow-up with hard lobbying for the ERA.

In 1978, the NWPC-ERA Fund contributed a total of \$350,000 in cash and technical assistance to candidates in seven unratified states (Oklahoma, Missouri, North Carolina, Florida, Illinois, Arizona, Nevada). The Fund won 75 percent of its targeted races—106 of 142 pro-ERA campaigns.

Decisions on candidate endorsements were made in cooperation with state and local caucuses and the ERA committee.

Pat Frank, who ran a tough race for the Florida senate said of the Fund, "As so often occurs with women candidates, money was scarce in our campaign, and we faced a well financed opponent. But our volunteers were numerous and the technical assistance offered by the Caucus permitted us to utilize them to the fullest."

Bob McKnight who defeated ERA turncoat Ralph Posten in another key Florida senate race said, "I'm convinced I defeated Posten because of the help from the Caucus and its members."

During 1979 the ERA Fund is working in Virginia and Louisiana. Plans are already in the works to go back into key states for the 1980 elections. As one Caucus member so aptly put it, "We will not let ERA go away."

## Women Elected to Office—1978

<b>U.S. SENATE</b>			
Kansas	Nancy Landon Kassebaum	Republican	
<b>U.S. HOUSE OF REPRESENTATIVES</b>			
Colorado			
1st CD	*Pat Schroeder	Democrat	<b>SECRETARY OF STATE</b>
Illinois			Arizona
7th CD	*Cardiss Collins	Democrat	*Rose Mofford
Louisiana			California
2nd CD	*Corinne (Lindy) Boggs	Democrat	*March Fong Eu
Maine			Colorado
2nd CD	Olympia Snowe	Republican	*Mary Estill Buchanan
Maryland			Connecticut
3rd CD	*Barbara Mikulski	Democrat	Barbara Kennelly
4th CD	*Marjorie Holt	Republican	Minnesota
5th CD	*Gladys Noon Spellman	Democrat	*Joan Grove
6th CD	Beverly Butcher Byron	Democrat	New Mexico
Massachusetts			Shirley Hooper
10th CD	*Margaret Heckler	Republican	Alice Kundert
Nebraska			South Dakota
3rd CD	*Virginia Smith	Republican	Vel Phillips
New Jersey			Wisconsin
5th CD	*Millicent Fenwick	Republican	*Thyra Thompson
New York			Wyoming
9th CD	Geraldine Ferraro	Democrat	<b>STATE TREASURER</b>
12th CD	*Shirley Chisholm	Democrat	Alabama
16th CD	*Elizabeth Holtzman	Democrat	*Annie Laurie Gunter
Ohio			Arkansas
20th CD	*Mary Rose Oakar	Democrat	*Nancy Hall
Tennessee			Idaho
3rd CD	*Marilyn Lloyd	Democrat	*Marjorie Moon
<b>GOVERNOR</b>			Kansas
Connecticut	*Ella Grasso	Democrat	*Joan Finney
<b>LIEUTENANT GOVERNOR</b>			Ohio
Colorado	Nancy Dick	Democrat	*Gertrude Donahay
Hawaii	Jean S. King	Democrat	Shirley Wittler
South Carolina	Nancy Stevenson	Democrat	Wyoming
Vermont	Madeleine Kunin	Democrat	<b>STATE AUDITOR</b>
			Alabama
			*Betty Frink
			<b>COMMISSIONER OF THE BUREAU OF LABOR</b>
			Oregon
			Mary Roberts
			<b>JUDGE, STATE COURT OF APPEALS</b>
			New Mexico
			Lella Andrews
			New Mexico
			Mary Walters
			Oregon
			*Betty Roberts
			<b>CLERK OF THE COURT</b>
			Indiana
			Marge O'Loughlin
			<b>SUPERINTENDENT OF PUBLIC INSTRUCTION</b>
			Arizona
			*Carolyn Warner
			Wyoming
			Lynn Simons
			<b>STATE BOARD OF EDUCATION</b>
			Colorado
			Dorothy Gottlieb
			<b>UNIVERSITY REGENT</b>
			Colorado
			Rachael Noel

\* Reelected

National Women's Education Fund

# NWPC Campaign Support Committee

The Campaign Support Committee is the political action committee of the NWPC. It is a federal committee which can raise and contribute funds to federal candidates and is registered with the Federal Elections Commission.

1978 saw women increase their overall numbers in elective office across the country. A woman finally broke the male bastion in the U.S. Senate—Republican Nancy Landon Kassebaum, while Caucus members Geraldine Ferraro (D-NY) and Olympia Snowe (R-ME) won election to the U.S. House of Representatives. Thirteen of the 15 incumbent women representatives who sought re-election were returned by their constituencies; while Beverly Byron, widow of an incumbent congressman running for re-election at the time of his death, took over the campaign and ran successfully for the seat.

But the real success story for women was told in the state and local races. The election of four new women to the lieutenant governor posts in Colorado, Hawaii, South Carolina, and Vermont joined one in Mississippi. (In Kentucky, Thelma Stovall lost her lieutenant governor seat when she ran for governor.)

There are two women governors, in Connecticut and Washington, and 761 women now serving in legislatures representing 10.2 percent of state lawmakers. This is a 50 percent increase in the last decade.

For the 1980 elections, NWPC has set its goal to become a full service campaign organization. Using a team approach in developing regional and state models for endorsing and supporting candidates, Caucus members will compile an in-depth analysis of incumbent vulnerability. The team will also facilitate candidate recruitment, district targeting and refining endorsement procedures.

Raising federal candidate money is a priority for 1980.



Iris Mitgang  
Political Action Committee Chair

# NWPC Administration

The Administrative Committee is composed of eight officers and seven members elected from the Steering Committee. This group has complete authority and responsibility for the organization when the Steering Committee is not in session.

The Steering Committee is composed of representatives from each state (one representative for the first 30 paid members and one for each additional increment of 100), and from the minority, ethnic and special interest caucuses, chairs of the standing committees, and 12 at-large members elected at each biennial convention.

The Steering Committee has among its duties the establishment of policy between conventions and adoption of the annual budget.

There are ten standing committees.

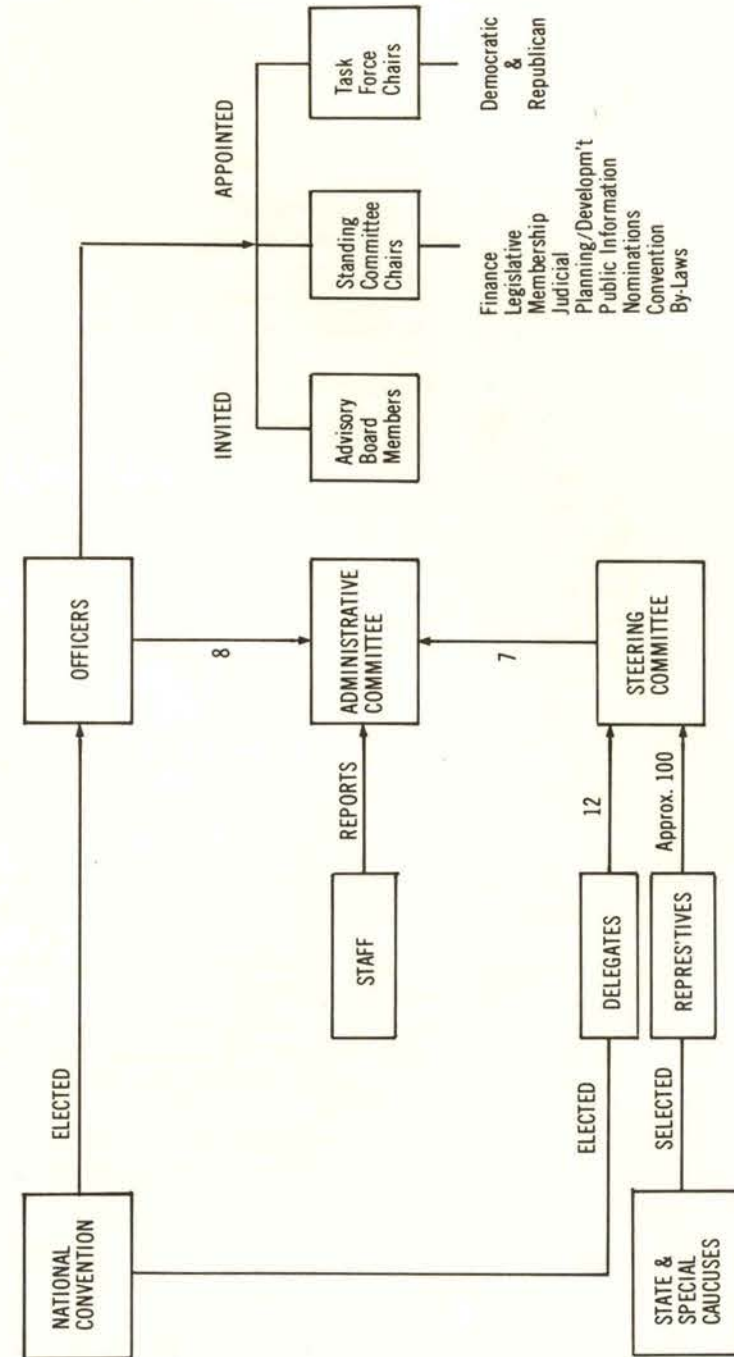
Programs generally fit under one or more of the standing committees with the committee chair and members responsible for that program. The Planning and Development Committee includes the chairs of all standing committees and the Republican and Democratic Task Force Chairs. This committee helps to coordinate programs and establishes procedures under which the organization operates.

The state and local caucus chairs work as communication links with the members. It is their responsibility to see that all members keep informed about national programs.

The Republican and Democratic Task Forces make possible the bi-partisan aspect of NWPC, particularly in a presidential election year. Each task force works with their own members to plan and strategize for their party's national conventions.

NWPC STANDING COMMITTEE CHAIRS	NWPC ADMINISTRATIVE COMMITTEE
<b>Planning and Development Committee</b> Carol Silverthorn, Illinois	Mildred Jeffrey, Michigan Rita Triviz, New Mexico Patricia Bailey, Washington D.C. Anita Nelam, Washington, D.C. Iris Mitgang, California Rose Marie Roybal, New York, NY Jane Macon, Texas, Danya Yon, North Carolina Marilyn Adams, New York Miriam Dorsey, North Carolina Sally Lunt, Massachusetts Carol Silverthorn, Illinois Martha Smiley, Texas Mary Stanley, California Nancy Norman-Uhl, Iowa
<b>Nominating Committee</b> Marcia Hunt, California	
<b>Legislative Committee</b> Susan McLane, New Hampshire Marilyn D. Clancy, Illinois	
<b>Membership Committee</b> Peg Cass, Iowa	
<b>Public Information Committee</b> Virginia Karp, Ohio Marilyn Adams, New York	
<b>Finance Committee</b> Erla Alexander, Georgia	
<b>By Laws Committee</b> Martha Smiley, Texas	
<b>ERA Committee</b> Miriam Dorsey, North Carolina	

## NWPC Structure





# NWPC Staff Report

by Sharon Flynn  
Acting Executive Director

Being here in Cincinnati celebrating our eighth birthday brings to mind some poignant moments for many of us. Change comes quickly for groups like the Caucus, and we strive even harder to keep pace.

For a staff that has grown from three to 17... from a third floor walk-up over a fancy restaurant on Pennsylvania Avenue where our neighbors at 1600 often lunched... from recycled furniture and staffers, attempting projects never before tried by them or any one else... we have indeed come a long way...

The 1972 Democratic Convention saw us ensconced in the Betsy Ross Hotel (more often referred to as the Betsy Roach). We sold "Men for Women" buttons to the male Wallace delegates, who claimed they "couldn't argue with that, little lady." We rented a car from an overly friendly Miami dealer who wanted to show us how to drive it... while we were already in the driver's seat. One staffer found a dead fish on her hotel window sill, while several of us took notes for a future travel book on how to eat in Miami on \$5 a day (pre-inflation).

The Republicans put us up in style in '72. A nice hotel... but five to a room. Someone slept on the mimeograph machine. We had buttons made with the feminist symbol in the "o" of Nixon. Several delegates read them upside down and asked who was "Noxin?"

Our first meeting with the women members of the Rules and Platform Committees got off to a slow start... there were no chairs and in 1972, Republicans didn't sit on the floor. But one brave soul, Mary Crisp, (now co-chair of the Republican National Committee) broke the ice, took one of the offered baloney sandwiches and told us her story of how some of the Arizona Republican men tried to keep her from being a delegate... history was made.

In 1973, President Nixon referred to us as "other individuals" when he described the nomination of Margaret Heckler for his vice presidential vacancy.

That was a long time ago. Today, Republicans and Democrats in the Caucus not only sit on the floor together but have traded in the baloney for wine and cheese. We attend each other's fund raisers for feminist candidates, share strategies and plot together on getting power for all women.

Working with the staff these past several months has been an exhilarating experience. You, the members, can be proud of your staff. They are among the best and the brightest and are professional in every sense.

The Caucus is now in an interesting transition period. Losing two valued, long-time staff members, Jane McMichael and Lael Stegall, in the same month was difficult at first. But with its usual resiliency, the organization bounced back, and went on with business as usual.

Under each program area we have listed committee chairs and the staff people assigned to that committee or area. Below, therefore, I am just listing names and titles for your information.

Thank you all for your help.  
Happy Birthday to us!

# NWPC Staff

## National Staff

- |                                 |                  |
|---------------------------------|------------------|
| Executive Director (Acting)     | Sharon Flynn     |
| Editor, Women's Political Times |                  |
| Executive Assistant             | Sylvia Ware      |
| Legislative Director            | Ann Kolker       |
| Membership Director             | Grace Orlansky   |
| Membership Associate            | Paula Pucillo    |
| Development Director            | Elois H.J. King  |
| Development Associate           | Ann Monnig       |
| Press Coordinator               | Ellen Malcolm    |
| Administrative Assistant        | Ellen J. Ferebee |
| Financial Assistant             | Gwen Richardson  |
| Receptionist                    | Roxann Brown     |
| Office Assistant                | Cosby Kittrell   |

## Consultants

- |   |                 |
|---|-----------------|
| Fund Raising  | Betsy Crone     |
| Women's Political Times,<br>Advertising Sales Manager | Carol Cladouhos |
| Women's Political Times,<br>Managing Editor           | Robbie Snow     |

## Special Convention Staff

- |             |  |
|-------------|--|
| Coordinator | Kris Jacobs                                    |
| Secretary   | Dawn Dilimetin                                 |
| Interns     | Mary Burlington<br>Paula Anderson              |
| Volunteers  | Debbie Harding<br>Roberta Weiner<br>Susan Ness |



Gwen Richardson



Ellen J. Ferebee



Cosby Kittrell



Roxann Brown



Betsy Crone



Sylvia Ware

# **Advertisers**



# Why we put 8 essential vitamins in Apple Jacks.

We didn't make Kellogg's® Apple Jacks® cereal, or any of our other fortified ready-sweetened cereals, just for fun.

When a typical serving is part of a child's complete breakfast, they get a very smart start, which includes:

**Vitamin A**  
to help keep eyes healthy and skin soft and smooth.

**Riboflavin and Niacin**  
to help the body utilize energy from food.

**Vitamin C**  
to help build connective tissue and maintain resistance to infection.

**Vitamin D**  
to help the body use calcium to build and maintain bones and teeth.

**Vitamin B<sub>6</sub>**  
to help the body use protein to build tissues.

**Thiamin**  
to help the release of energy from carbohydrates.

**Folic Acid**  
to help produce red blood cells.



**Three careers in one company.**

Jean Moore, Manager, Major Office Projects  
Atlantic Richfield Company



In 1971, I was a secretary. Most working women were. But a group of us wanted that to change. So we wrote a position paper on working women for the management.

Not a negative position, mind you. None of us felt negatively about the company. It was just that women were in the kind of jobs you'd expect women to be in. We wanted a better chance at the jobs that

were traditionally men's. The company created the position of women's coordinator in the Equal Opportunity Program. I must have been one of the more vocal women because I was offered the job. I took it. Quickly. And the next year, they made me manager of the entire Equal Opportunity Program.

In my newest position, as Manager of Major Office Projects, I have

even greater responsibilities. I'm the project manager for a 45-story office building Atlantic Richfield is developing with Rockefeller Center and Wells Fargo Bank.

You know, you just don't see too many women representing a big corporation in developing an \$80 million office building.

But you sure can see a lot more of them than in 1971.

*As a company involved in the discovery and development of this nation's natural resources, Atlantic Richfield would like to salute our own most valuable natural resource—our people.*

**ARCO**

Atlantic Richfield Company

*Kellogg's*  
**A very smart start.™**

© Kellogg Company © 1979 Kellogg Company



**U.S.  
NAMES  
RABBIT  
DIESEL  
#1  
IN ECONOMY.**

Now it's official. According to the official 1979 EPA figures, our Rabbit Diesels get the highest mileage in America: an estimated 40 MPG and 50 MPG estimated highway mileage. (Compare this estimate to the "Estimated MPG" of other cars. Your mileage may vary with speed, weather and trip length. Highway mileage will probably be less. That's also official.)

We could go on and on about all the innovations in the newest Rabbit.

Like the fact that it goes on and on (amazingly!) without ever needing a conventional tune-up. (There are simply no spark plugs, points, condensers, or carburetors to tune.) There's front-wheel drive for

better tracking.

There's more room for people than 31 other cars you could buy.

And a Rabbit Diesel goes like a bat out of you-know-where. In fact, it set 31 world's records for diesels on a track in Miramas, France.

Come test it for yourself.

For years we've built cars that use very little gas.

Now we've built one that doesn't use any at all.

**VOLKSWAGEN  
DOES IT  
AGAIN**



# WHAT YOUR MOTHER NEVER TOLD YOU ABOUT INSURANCE.

Chances are, when your father's insurance agent dropped by, your mother was out in the kitchen fixing coffee and sandwiches. So she probably didn't know much to tell you.

Insurance was one of those things women weren't supposed to concern themselves with. It was "man talk."

Not so anymore.

There's a woman today who should know as much about insurance as a man. She's single. She's married. She's divorced. She's a widow. She's a working woman. With the same kind of responsibilities a man has.

At Nationwide, we can help her meet these responsibilities. With almost every kind of insurance she might need.

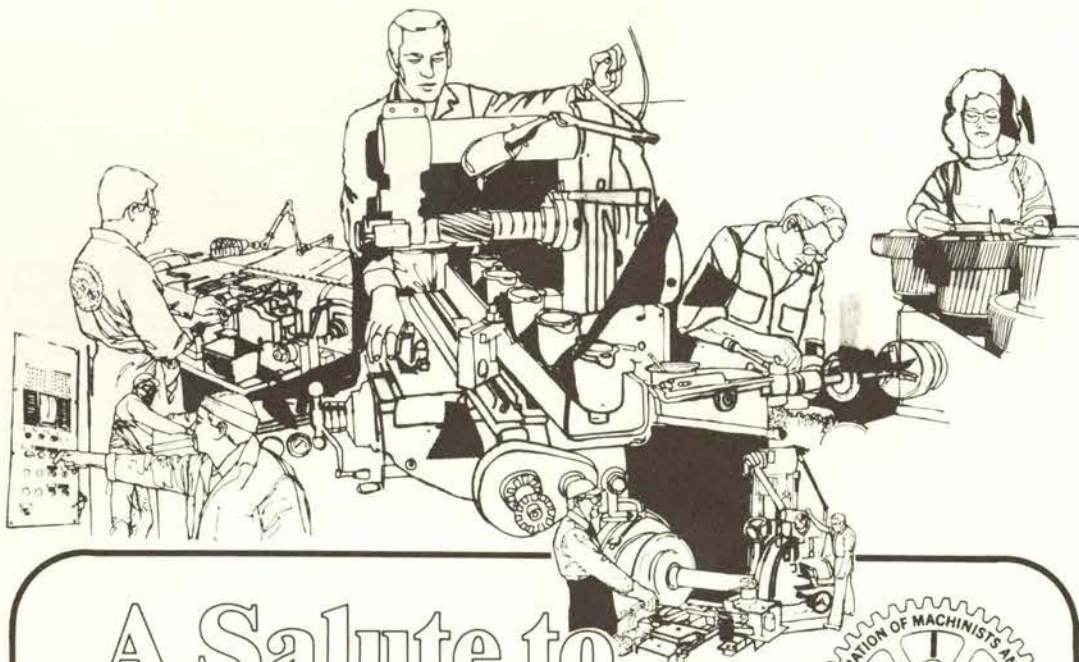
Life insurance and health insurance. Homeowner's or renter's insurance. Auto insurance and business insurance.

Don't be upset with Dad, or Mom. They were only doing what was right back then.

But do call a Nationwide agent. Ask her, or him, to fill you in on what you missed.



Nationwide Mutual Insurance Co. Nationwide Mutual Fire Co. Nationwide Life Insurance Co. Home Office: Columbus, Ohio.  
An equal opportunity employer.



# A Salute to our friends



**National Women's Political Caucus**  
on the occasion of its Fourth Biennial Convention

from the Union that Brings You the Best

**INTERNATIONAL ASSOCIATION OF MACHINISTS  
AND AEROSPACE WORKERS**

William W. Wimpisinger  
International President

Eugene D. Glover  
General Secretary-Treasurer

**General Vice Presidents**

Mike Rygus  
Ottawa, Ont.

Tom Ducey  
Chicago, IL

Sal Iaccio  
New York, NY

Roe Spencer  
Dallas, TX

John Peterpaul  
Washington, DC

Stanley Jensen  
Portland, OR

Justin Ostro  
Long Beach, CA

George Poulin  
Washington, DC

Merle E. Pryor, Jr.  
Cleveland, OH

WISHING YOU A  
SUCCESSFUL  
AND  
BENEFICIAL  
CONVENTION



FROM

**AMOCO  
DEALERS AND  
JOBBER**

**THROUGHOUT THE  
UNITED STATES**

THE NATIONAL WOMEN'S  
POLITICAL CAUCUS OF  
ALAMEDA COUNTY SUPPORTS  
IRIS MITGANG, A MEMBER OF  
OUR SISTER CAUCUS FROM  
CONTRA COSTA COUNTY, FOR  
NATIONAL CHAIRWOMAN.

Please stop and visit our display table.  
Hopefully we'll have something that you  
need or desire and the proceeds go to a  
cause near and dear to you.

Dear Congressman;

**SPEAK OUT FOR ABORTION FUNDING BECAUSE  
OTHERS ARE SPEAKING OUT AGAINST IT.**

**Planned Parenthood  
Federation of America**  
810-7th Avenue,  
New York, NY 10019

**with 188 affiliates providing family planning services  
throughout the country**

**Your energy needs,  
we're working on them.**



Ashland Oil, Inc.-Ashland, Ky. 41101

Welcome to OHIO, NWPC  
**BEST WISHES**

from the

**Ohio Democratic Party**

UNITED STATES SENATOR JOHN H. GLENN  
UNITED STATES SENATOR HOWARD METZENBAUM  
TREASURER OF STATE GERTRUDE W. DONAHEY  
ATTORNEY GENERAL WILLIAM J. BROWN  
AUDITOR OF STATE THOMAS E. FERGUSON  
SECRETARY OF STATE ANTHONY J. CELEBREZZE, JR.  
OHIO HOUSE SPEAKER VERNAL G. RIFFE  
OHIO SENATE PRESIDENT OLIVER OCASEK  
PAUL TIPPS, CHAIRMAN, OHIO DEMOCRATIC PARTY

**AIRSPECT, INC.**

627 Doris Avenue  
Akron, Ohio 44303

Spasoje Miskovic  
General Manager

**AKRON, OHIO**

**SUMMIT COUNTY  
DEMOCRATIC PARTY**

AL TEODOSIO - CHAIRMAN

*Strongly Supports  
Women's Active Participation in Politics*

**JUDY NICELY**  
Attorney-at-Law

620 Centran Building  
Akron, Ohio 44308  
Off. - (216) 762-0771  
Res. - (216) 836-4774

JEWELRY  
SPECIAL WORK  
JEWELRY REPAIR



STONE SETTING  
MOUNTINGS  
ENGRAVING

**S & L Jewelry Mfg.**  
FRANK JONES, OWNER

PHONES  
OFFICE 241-7359  
HOME 356-3621

ROOM 400  
37 W. SEVENTH ST.  
CINCINNATI, O. 45202

**Avis**  
salutes the  
**National Women's  
Political Caucus.**

**They try harder.**

**AVIS**



**We try harder.**  
Avis features GM cars and trucks.



**TANDEM PRODUCTIONS, INC.**  
**T.A.T. COMMUNICATIONS CO.**

*"Where food is an art  
and the setting is history"*

**MECKLENBURG  
GARDENS**

UNIVERSITY & HIGHLAND/281-5151/

Outdoor dining Six minutes north of downtown



Secretary of State  
Anthony J. Celebrezze, Jr.

14th Floor  
State Office Tower  
Columbus, Ohio 43215

614 / 466-2530



**The Golden  
Shear**

120 E. Fourth St. 15 W. Sixth St.  
Formica Arcade Terrace Hilton Hotel  
621-2026 421-9677

115 Garfield Place  
621-7209



**F. C. Machine Tool & Design, Inc.**

1474 Main Street  
Cuyahoga Falls, Ohio  
216/928-9001

**Compliments of**

**Columbus-Franklin County**

**AFL-CIO**

**and Officers**



Chrysler New Yorker

Neil Armstrong

**"Innovative Engineering Solutions  
To Fuel Economy Problems Help Give Chrysler  
Corporation The Best Average Fuel Mileage  
Of The Big Three."**

"Chrysler's projected 1979 average fuel mileage is 20 estimated miles per gallon—the best of the Big Three. To improve the fuel mileage of family-size cars, for instance, Chrysler Corporation engineers developed a unique automatic transmission lock-up torque converter for most six-cylinder and V-8 engines that completely eliminates fuel-wasting slippage at highway speeds; so you can get economy without giving up an automatic transmission.

"To get good mileage in sporty cars, Chrysler designed two sport coupes that get 25 est. mpg,\* and which, aerodynamically, are among the most efficient of all American-built cars.

"To give economy cars power to pass, Chrysler offers the only cars in America with Twin-Stick transmission. Four speeds for economy, four more for extra power.

"Innovative engineering like this is another reason why I'm impressed with the way Chrysler is meeting the driving needs we all have today."



**Chrysler. Dodge. Plymouth.  
Chrysler engineering makes the difference.**

\*EPA est. mpg. Use this number for comparisons. Your mileage may differ depending on speed, trip length and weather.

**Clairol Salutes  
The National  
Women's  
Political Caucus**

**The Clairol Loving Care Scholarship Program:** the only nationwide company-sponsored fund to aid women over 30 achieve career goals through post-secondary education

**Entering the Job Market: A Workshop for Women over 30:** a nationwide series of workshops to help women re-enter the world of work

**Making It in Business: A Seminar for Working Women:** a special program to help women who work make the most of their careers



**DEMOCRATICALLY SPEAKING...**

Women, not men, are the majority in our country. And in a democratic society, majority rules. Right? Wrong.

Women, for too long, have been victims of discrimination in hiring, promotion, wage practices and a host of related areas. AFSCME, proud of its history of combating sex discrimination, is working for passage of the Equal Rights Amendment in the remaining unratified states as well as fighting recision efforts in those states which have already passed this Constitutional amendment.

Democratically speaking . . . a majority deserves nothing less than full equality under the law.

Jerry Wurf  
International President



**AFSCME**  
in the public service

William Lucy  
International Secretary-  
Treasurer

*Elaine Ann Herald*  
ATTORNEY AT LAW

(412) 471-7703      917 FRICK BLDG.  
PITTSBURGH, PA 15219

Women's books, music, t-shirts  
**THE CRAZY LADIES BOOKSTORE**  
4168 HAMILTON AVENUE  
Hours: M-F 3-8; Sat. 12-5

*"Greetings"*  
FROM THE  
**Hamilton County  
Democratic Party**

Sid Weil,  
co-chairman

John Wiethe  
co-chairman

*"Best Wishes"*  
from  
**THE CHARTER COMMITTEE  
OF  
GREATER CINCINNATI**

*"America's oldest citizens' party  
dedicated to achieving excel-  
lence in local government."*

## Congratulations to the National Women's Political Caucus.

Since your founding, the number of women in the Judiciary, executive branch and elected office at all levels has increased dramatically.

We are proud to be your friends! We join with you in the ongoing task to involve more women in the political process and to ratify the ERA.

Best wishes for a productive Convention.

Douglas A. Fraser  
President  
International Union, UAW

Odessa Komer  
Vice President and Director  
Women's Department, UAW

ATTENDING A REDS' GAME AT THE STADIUM?  
...after the game stop by

# SLEEP-OUT LOUIE'S

Welcome!  
National Women's Political Caucus.

LUNCHEON SERVED WEEKDAYS  
from 10:30 a.m. till . . .  
HAPPY HOUR Monday-Friday 3-7 p.m.

OPEN 7 NITES TILL 2:30  
Live Entertainment

721-3636

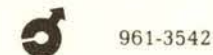
232 W. 2nd St. (2nd & Plum Sts.)

## Vasectomy

What does it mean?



Vasectomy means safe, simple and  
affordable birth control for men.  
Vasectomy means a man's way for both of you.  
For further information call your physician or:



961-3542

Vasectomy Services, Inc.  
3332 Vine Street, Cincinnati, Ohio 45220



**Kentucky State Parks & Shrines**  
Super Natural Vacation Sites



Fort Boonesborough

This year beat the energy  
crunch. Enjoy Kentucky's  
colorful heritage—visit our  
state shrines, museums, and  
recreational parks.

Tour restored pioneer forts,  
Civil War memorials, beautiful  
old homes and the exciting  
Kentucky Horse Park—all  
located within a few hours'  
or even a few minutes' drive.



Columbus-Belmont Battlefield

Vacations so enjoyable . . . and  
so affordable.

WRITE: TRAVEL, Dept. KPA-P-9, Frankfort, KY 40601



Best Wishes to the 1979  
Convention of the National  
Women's Political Caucus

from the

**INTERNATIONAL UNION OF  
ELECTRICAL, RADIO AND  
MACHINE WORKERS (IUE),  
AFL-CIO-CLC**

David J. Fitzmaurice, President  
George Hutchens, Secretary-Treasurer



**MARTHA LAYNE COLLINS**  
Kentucky's  
Democratic Candidate  
for  
Lt. Governor

*Best wishes for the continued growth of  
Kentucky Women's Political Caucus and  
Caucuses across the country*

*Have a Nice Stay*  
Compliments of  
**Northern Kentucky  
Convention and Visitors  
Bureau**

**CINCINNATI  
AFL—CIO  
LABOR COUNCIL**

Oscar G. Lee  
President

William P. Sheehan  
Executive Secretary-  
Treasurer

N ew opportunities await  
W omen willing to assume  
P olitical leadership in  
C harting new directions

BEST WISHES  
FOR A SUCCESSFUL  
CONVENTION

GERTRUDE W. DONAHEY  
Treasurer of State

"To the achievement of a more  
prosperous and democratic America,  
with freedom of opportunity guaranteed  
to all through law, regardless of  
race or creed or sex."

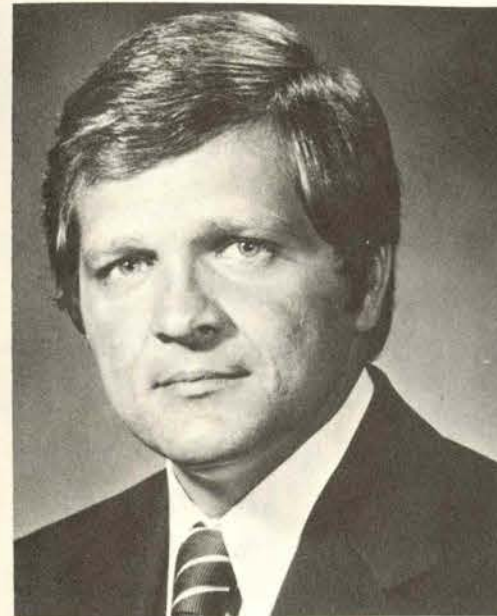


**COALITION  
OF LABOR UNION  
WOMEN**

In the interests of good government  
for all people, greetings to  
all participants in the  
National Women's Political Caucus.



**Pullman Incorporated**

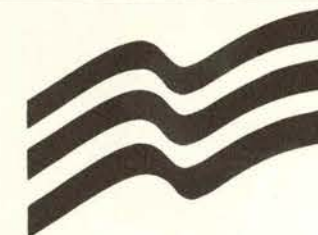


**Attorney General  
William J. Brown**

**Experience  
the Romance of  
Riverboat Dining**

Phone: 261-4212  
Foot of Greenup St., Covington, Ky.

## Public Leadership, Carlow and You



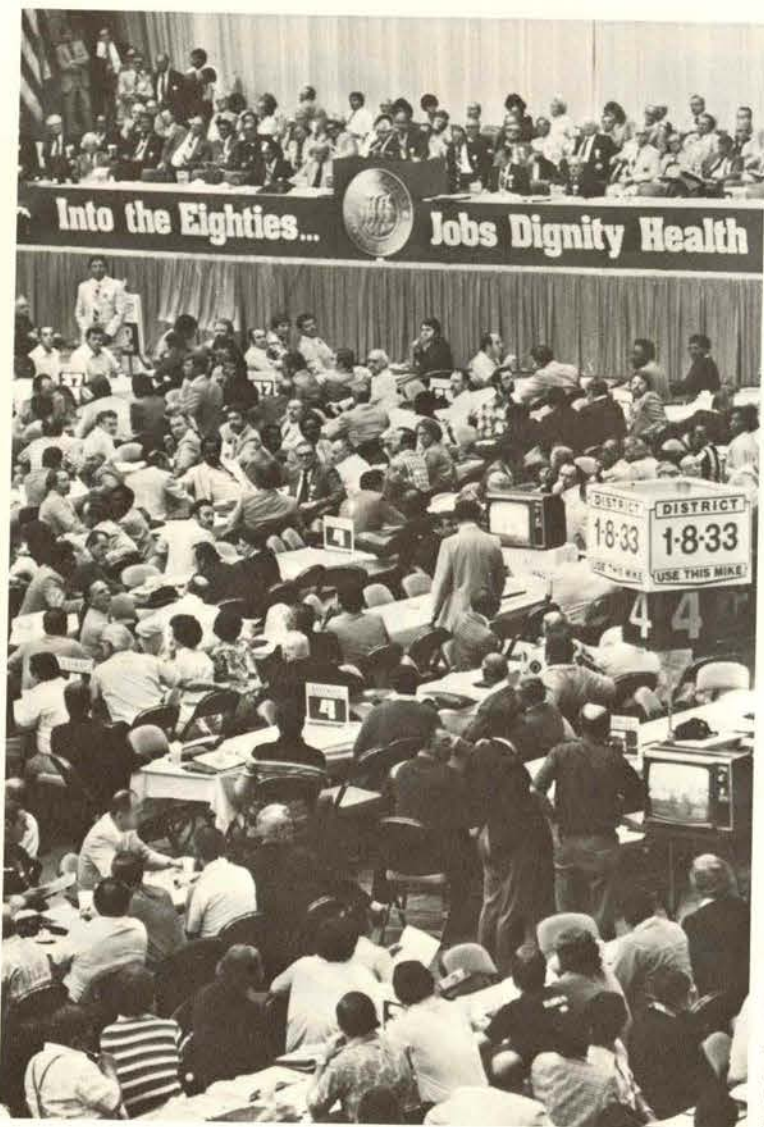
The Public Leadership Education Network is designed to provide innovative programs in political education for women to encourage them to assume political leadership. The long-range goal of the Network is to stimulate interest in the development of similar programs by institutions not already involved in educating women for active participation in public life.

Funded by a two-year grant from the Carnegie Corporation of New York, the Network currently links five women's colleges and two national organizations.

Carlow College, through its Center for Continuing Education, is offering several series of weekend workshops and extended courses focusing on the skills necessary for success in the political arena.

Information about the program may be obtained by calling 412/578-6092 or by writing to the **Center for Continuing Education**, Carlow College, 3333 Fifth Avenue, Pittsburgh, Pennsylvania 15213.

# CARLOW COLLEGE



# WE'RE MOVING

(in more ways than one)

4,227 delegates attended the 1978 convention of the United Steelworkers of America. One of the nation's largest such gatherings, held every second year for a week's duration, it brings hundreds of additional people—delegates' families, staff personnel, union guests—to the convention city.

Our 1980 convention was scheduled to be held in Las Vegas, Nevada. But, in keeping with our position, and as Nevada is among the states which have not ratified the Equal Rights Amendment, we are moving . . . to Los Angeles, California. We have publicly announced our action and the reason for it.

As a strong supporter of the ERA, which has urged our members to work for its passage at the crucial state level, the USWA also is working for comprehensive child care legislation and to end reproductive and other health hazards at the workplace. The union helped pass the recent pregnancy disability bill and has promoted, in collective bargaining, the concept of affirmative action.

Not only do we encourage the active participation of women in the USWA and the Coalition of Labor Union Women, but we also strongly back efforts to rebuild that broader coalition of conscience so needed to move our country in the proper direction.

To the NWPC—an important part of such a coalition—our very best wishes for a productive convention.

## UNITED STEELWORKERS OF AMERICA AFL-CIO·CLC

**Lloyd McBride**, International President

**Lynn Williams**  
International Secretary

**Frank McKee**  
International Treasurer

**Joseph Odorcich**  
International Vice President  
Administration

**Leon Lynch**  
International Vice President  
Human Affairs



**Mick Noll's  
Covington Haus**  
Serving  
Great German & American  
Food & Drink  
Open Daily For Lunch & Dinner  
**SUNDAY BUFFET BRUNCH**  
261-6655  
100 W. 6th St. • Downtown Covington  
Only 5 Minutes Away

Have  
Breakfast  
anytime...  
**Frisch's**  
BIG BOY®

There are  
lots of towns.  
There are  
lots of countries.  
There is only one  
Town & Country.

If you're from the Tri-State area, you probably know all about the Town & Country: Its heritage: 35 years of smiling faces — on the T & C side and the customer side.

Its fare: prime ribs, aged steaks, Kentucky baked ham, Kentucky fried chicken, frogs legs, seafood of all kinds.

Its credo: courtesy, service, fair prices — and extras like valet parking.

If you're not from the Tri-State area, give us a try. You'll probably be back next time you're within reach.

**Town and Country**  
RESTAURANT

Ft. Wright West Exit off I-75  
1622 Dixie Highway/Covington, Kentucky  
Reservations: 291-7328

Dear Delegates,

We are three women that founded Cincinnati's first private restaurant, bar, disco; with everyone saying it was the world's worst idea! Well, here we are 16 months later, 3,800 members and we just added an outdoor garden.

We would love to meet you. Bring your convention badge and we will make every effort to see that you have a wonderful evening of conversation, great food, terrific drinks, dancing and backgammon - just plain relaxation.

Mary Sue Morris, Sally Renner, Lib Stone



CORNER OF DELTA & COLUMBIA PARKWAY  
15 MINUTES FROM DOWNTOWN  
321-4200

THE WOMEN WHO WORK ON  
GETTING REVOLUTION INTO  
A MONTHLY MAGAZINE...



...SALUTE THE WOMEN  
WHO WORK ON GETTING  
REVOLUTION  
INTO A BALLOT BOX

With our love, support, and best wishes—  
THE STAFF OF **Ms.** MAGAZINE

20% COUPON 20%

**CASUAL CORNER**

522 RACE STREET

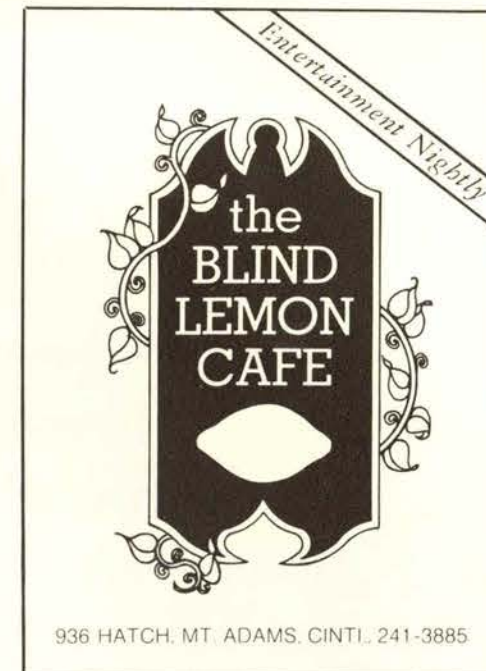
offers

**20% off** on new  
**FALL COATS... '79**

for the  
**Women's  
Political Caucus**

thru  
**July 12, 13, 14**

\* Bring this coupon for 20% discount. \*



**BEST WISHES  
FROM  
COMMUNICATIONS WORKERS OF AMERICA**

Glenn E. Watts, *President*

Louis B. Knecht, *Secretary-Treasurer*

Gus Cramer, *Executive Vice President*

George M. Miller, *Executive Vice President*

Richard W. Hackler, *Executive Vice President*



1925 K STREET, N.W., WASHINGTON, D.C. 20006

The Ohio Education Association  
 is honored to extend  
 greetings and best wishes to the  
 National Women's Political Caucus  
 and wishes you continued success.

Your support is requested for the  
 candidacy of  
**SANDY E. SCHWARTZ**  
 for the position of At-Large Delegate.

Together We Can!



OEA Women's Caucus  
 Ohio Education Association  
 National Education Association

**THE  
 "QUEEN CITY"  
 WELCOMES  
 the  
 N.W.P.C.**

TECUMSEH X. GRAHAM  
 Councilman  
 Cincinnati, Ohio



WELCOME TO THE QUEEN CITY

SENATOR STAN ARONOFF  
 MINORITY WHIP  
 OHIO SENATE

**Bobbie M. Hall**  
*Fundraising Consultant*

500 Clairbrook Ave.,  
 Columbus, Ohio 43228  
 Area Code 614-878-1641

*Elect*  
**RAYMOND  
 BARBER**

*The candidate with a program  
 to improve Kentucky's educa-  
 tional opportunities for all of  
 our students and participating  
 adults*



**RAYMOND BARBER**

Paid for by Barber  
 Campaign Fund for  
 Superintendent of Public  
 Instruction John Ramsey,  
 Treasurer, P.O. Box 917,  
 Frankfort, Kentucky 40602

*For*  
**SUPERINTENDENT  
 PUBLIC INSTRUCTION**

**Best Wishes For  
 A Successful Convention from  
 The Ohio Republican Party**

*Saluting*  
**Republican Women in the  
 113th Ohio General Assembly**

**DONNA POPE-Parma**  
*Minority Whip*

**HELEN H. FIX-Cincinnati**  
*Ranking Member State Government Committee*

**MARIE TANSEY-Vermilion**  
*Ranking Member Aging and Housing Subcommittee*

**EARL T. BARNES**  
*Chairman*

**MARTHA C. MOORE**  
*Vice-Chairman and National Committeewoman*

AVIS, INC.

CANADA DRY CORPORATION

MAX FACTOR & CO.

GLASS CONTAINERS CORPORATION

HALSTON ENTERPRISES, INC.

HUNT-WESSON FOODS, INC.

McCALL PATTERN COMPANY

ORLANE, S.A.

SOMERSET IMPORTERS, LTD.

UNITED CAN COMPANY

**NORTON SIMON INC**

WORLD HEADQUARTERS 277 PARK AVENUE, NEW YORK, NEW YORK 10017

CONSUMER MARKETING WORLDWIDE

# HELPING THE HANDS THAT HEAL

The Johnson & Johnson Family of Companies is a world leader in health care. From the research, development, and quality-assured manufacturing of surgical, pharmaceutical and dental products to well-known consumer products used in the home, our companies are helping to meet the health care needs of people worldwide.

*Johnson & Johnson*

New Brunswick, N.J. 08903

## THE CINCINNATI WOMEN'S POLITICAL CAUCUS

would like to thank the following individuals, companies, groups, and places for making the 1979 convention a huge success:

Dave Kremp ..... *Cincinnati Convention & Visitor's Bureau*  
John Earls ..... *Stouffer's Cincinnati Towers*  
Guy C. Guckenberger ..... *City Council*  
Mary Ann Klekman ..... *The Catered Affair*

Federated Dept. Store  
The Cincinnati Dancing Pigs  
Uncle Steve's Chili  
Queen City Chili  
Dixie Chili  
Gold Star Chili  
Acropolis Chili  
Chili Town  
Cincinnati Chili  
Camp Washington Chili  
Bob Roncker and Phidippides  
Revlon  
Blue Cross/Blue Shield of Southwest Ohio  
Diet-Pepsi

Make a pet of our owl, lion, mouse or elephant. Each is crafted in 14K yellow gold on an 18 in. chain. 3/4 inch tall. Your choice \$135.



116 West Sixth Street  
Across from Stouffers

COMPLIMENTS  
FROM  
FRIENDS

READ REDBOOK, REDBOOK READS YOU

Stam Von Fustenberg®

CLERICAL - ADMINISTRATIVE - ENGINEERING - EDP - SALES  
ACCOUNTING • STENO • KEY PUNCH



SUITE 208 TRI STATE BLDG.  
432 WALNUT STREET  
CINCINNATI, OHIO 45202  
Phone: (513) 241-8675

JAY RICHARDSON  
Administrative Dept.



**Pizzerias**  
Visit LaRosa's 580  
6th. & Walnut Sts.  
421-2025  
Dining Room or  
fast Carry Out

### THE CINCINNATI WOMEN'S POLITICAL CAUCUS

WOULD LIKE TO WELCOME YOU TO

CINCINNATI, OHIO  
The "Queen City" Of The West

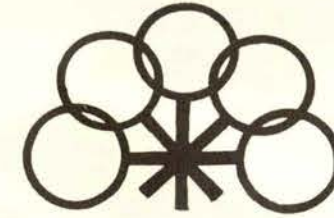
# Best Wishes...

from the more than 6,000 employees of  
McGraw-Edison Power Systems Division...

...a leading producer of a complete line of products for the  
transmission, distribution and control of electricity from  
generator step-up transformers to the ultimate user with  
14 plants and 61 branch offices throughout the country.

**McGRAW-EDISON**

Power Systems Division  
Post Office Box 2850  
Pittsburgh, PA 15230 USA



## THE OHIO WOMEN'S POLITICAL CAUCUS

Welcomes You To  
CINCINNATI, OHIO

Chair .....	Susan Schnebelt
Vice Chair .....	Nancy Cronin
Treasurer .....	Bobbie Hall
Recorder .....	Roberta Steinbacher
Correspondent .....	Diane Roebuck
At-Large .....	Phyllis Walker Mitchell

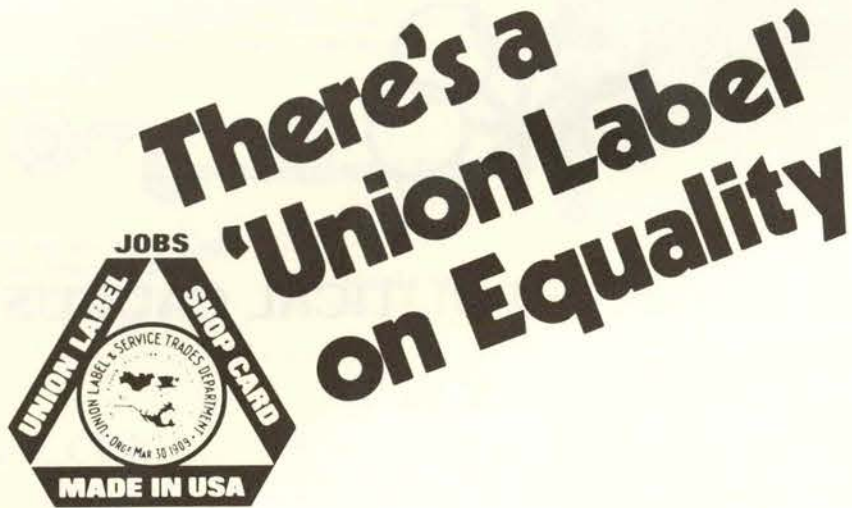
---

Akron Chair .....	Katherine Hinckley
Cincinnati Chair .....	Susan Schnebelt
Cleveland Chair .....	Julie Rak
Columbus Chair .....	Robin O'Keeffe

### Steering Committee Representatives

Cincinnati .....	Mary Wells
Cleveland .....	Lori Petterson
Cleveland .....	Jayne Zborowsky
Columbus .....	JoAnne Davidson
Columbus .....	Sandy Schwartz





**The Union Label and Service Trades Department, AFL-CIO**

815 Sixteenth Street, NW, Washington, D. C. 20006



**HARRIET BOGART**  
V.P. - Media Services



**SHARON WILKIN**  
V.P. - Marketing



**Hameroff/Milenthal, Inc.**

Advertising · Public Relations

140 E. Town Street,  
Columbus, Ohio 43215  
(614) 221-7667

**THIS WOMAN WANTS WORK . . .  
as NWPC Delegate-at-Large**



*Betty Blumberg*

**Name:**  
Betty Foster Blumberg

**Affiliation:**  
West Central Indiana Caucus  
Terre Haute, Indiana

**WPC Experience:**  
National Advisory Board, 1978-  
National Steering Committee, 1975-1979  
Member, Republican Women's Task Force, 1973-  
President, Indiana Women's Political Caucus, 1977-1979  
Vice-President, IWPC, 1975-1977  
Chief Republican Lobbyist for E.R.A., 1975-1977  
Numerous WPC Committees - state and local  
Charter member, West Central Indiana WPC, 1973

**Related Experience:**  
Indiana Commission I.W.Y., 1977  
Republican Nominee for State Senate, 1974  
Terre Haute Mayor's Advisory Committee, 1968-1971  
Numerous civic, political, and educational committees  
Educator, art critic, and lecturer

**Objective:**  
To serve enthusiastically as NWPC Delegate-at-Large

Republican National Committee

# 62 out of 63 isn't bad

There were 63 women newly elected to state legislatures in 1978. Sixty-two of those 63, or 98.4%, have something special in common—they are Republicans. The Republican Party is working hard to get more women elected to public office at all levels. And we have a comprehensive program designed to help women become more politically effective.

We applaud the National Women's Political Caucus for heightening political awareness among women and for bringing more women into the political process. It is long overdue.

*Chairman,  
Republican National Committee*

*Chairman,  
Republican National Committee*

**The Republican National Committee**  
310 First Street S.E., Washington, D.C. 20003

Authorized and paid for by the Republican National Committee, William J. McManus, Treasurer.

**WTAE-TV  
PITTSBURGH, PA.**



**SALUTES  
THE  
NATIONAL  
WOMEN'S  
POLITICAL  
CAUCUS**

**We're Special  
Because You Are!**

You're today's woman, and we're waiting to dress your every mood. At Paul Harris, we're specialists in fashion from head-to-toe. You'll find the clothes and accessories that fit your lifestyle. Make your own fashion statement with Paul Harris.

DOWNTOWN CINCINNATI



**THE AMERICAN COLLEGE  
OF NURSE-MIDWIVES**

The professional organization for nurse-midwives in the United States dedicated to "... the improvement of services for mothers and babies, in cooperation with other allied groups ..."

For further information:

**American College of Nurse-Midwives  
1012 Fourteenth Street, N.W.  
Suite 801  
Washington, D. C. 20005  
(202) 347-5445**



While covering the ground-breaking ceremony for the 1904 World's Fair, cub reporter Phmie Sheppard forgot herself and lit up a cigarette.

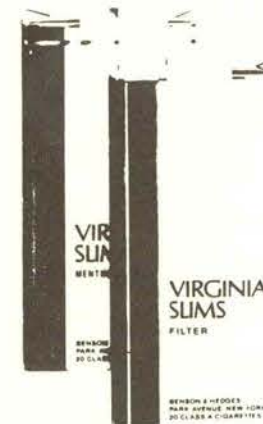


It was her first scoop.

You've come  
a long way, baby.

**VIRGINIA  
SLIMS**

*Slimmer than the fat cigarettes men smoke.*



15 mg "tar," 0.9 mg nicotine av. per cigarette by FTC Method.

Warning: The Surgeon General Has Determined That Cigarette Smoking Is Dangerous to Your Health.

Fashions: Ralph Lauren

*Pizall's*

127 West Fourth



The Ultimate  
in Good Taste.

Luncheon and Dinner  
Monday through Saturday  
Reservations 721-1345  
Donald G. Whittle, Proprietor

"The underlying premise of 'dress for success' articles is that, without constant advice and guidance, we will run amok and drift into work in ruffles, bangles and clouds of Jungle Gardenia . . ."

from "On Dressing for Success"  
in  
*Confessions of a Late Bloomer,  
Or Wear Enough Eye Make-Up  
and No One Will Notice Your  
Hips*

by P. R. Mecking, edited by K. Donnelly

Available from  
Quinn-Gallagher Press  
6372 Forward Ave., Pgh., PA 15217  
\$4.95, 64 pp., with illustrations

At

JULIA M. WALSH & SONS, INC.

We Specialize In Personalized Investment Services

Portfolio Management  
Tax Shelters  
Financial Plans

910 17th Street NW  
Seventh Floor  
Washington DC 20006

JULIA M. WALSH & SONS, INC.

(202) 857-0880

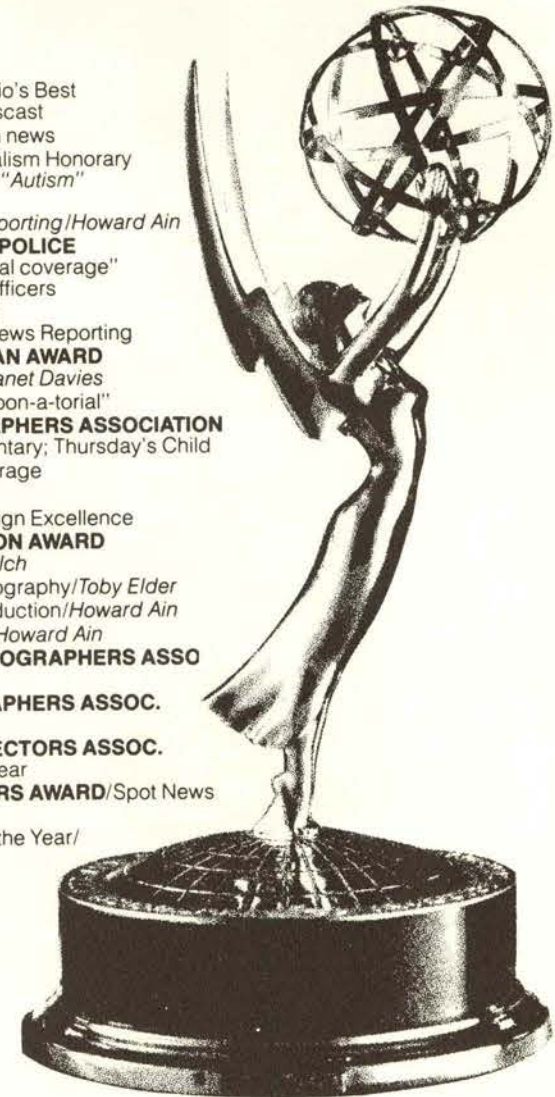
**SOME PEOPLE MAKE THE NEWS  
WHEN THEY WIN AWARDS;**

**WE WIN AWARDS  
WHEN WE MAKE THE NEWS.**

- 1979 **ASSOCIATED PRESS**/Ohio's Best Regularly Scheduled Newscast
- 1979 **24 "EMMY"** nominations in news
- 1979 **SIGMA DELTA CHI**/Journalism Honorary  
1st place/Documentary on "Autism"  
2nd place/Photography  
3rd place/Investigative Reporting/Howard Ain
- 1979 **FRATERNAL ORDER OF POLICE**  
Recognition of "professional coverage"  
in shooting deaths of two officers
- 1979 **OHIO NATIONAL GUARD**  
Continued Excellence in News Reporting
- 1979 **KENNEDY HUMANITARIAN AWARD**  
Documentary on Autism/Janet Davies
- 1979 **PEABODY AWARD**/"Cartoon-a-torial"
- 1979 **OHIO NEWS PHOTOGRAPHERS ASSOCIATION**  
2 Awards/Autism Documentary; Thursday's Child
- 1978 **"EMMY"**/Spot News Coverage
- 1978 **3 "EMMY"s**/The EDGE
- 1978 **DESI**/Silver Award for Design Excellence
- 1977 **CINCINNATI COMPETITION AWARD**  
for EDGE music/Oscar Welch
- 1977 **"EMMY"**/Spot News Photography/Toby Elder
- 1977 **"EMMY"**/News Event Production/Howard Ain
- 1977 **"EMMY"**/News Segment/Howard Ain
- 1977 **NATIONAL PRESS PHOTOGRAPHERS ASSO**  
Spot News/Toby Elder
- 1977 **OHIO NEWS PHOTOGRAPHERS ASSOC.**  
Spot News/Toby Elder
- 1977 **RADIO — TV NEWS DIRECTORS ASSOC.**  
Spot News Station of the Year
- 1977 **OHIO AP BROADCASTERS AWARD**/Spot News
- 1977 **ALPHA EPSILON RHO**  
Cincinnati Broadcaster of the Year/  
Nick Clooney

**EYEWITNESS  
12 NEWS abc**

5:30/6 & 11 PM



"Best Wishes"  
for a  
Successful Convention  
and in  
All Your  
Political Endeavors

## Hamilton County Republican Party

George C. Eyrich  
John H. Hermanies  
co-chairmen



**GOLDIE CHU**  
for Vice-Chair



- "Women from all walks of life need to join together and share..."
- "Politics and Power are important words which influence our everyday lives..."



## IMPRESSIVE

Thirty-two stories high and crowned with the magnificent, revolving Top of Crown Lounge and Restaurant. Three other restaurants, lounges...heated pool...superb accommodations for groups up to 1,500.

*Stouffer's*

**CINCINNATI TOWERS**

141 W. 6th St. ■ Cincinnati, Ohio 45202 ■ (513) 352-2100

Nobody does it better.

# America's *newest* union ... largest AFL-CIO affiliate.



## Best Wishes to

# The National Women's Political Caucus

## We *NEED* your clout!

United Food and Commercial Workers  
International Union

William H. Wynn  
International President

Sam J. Talarico  
International Secretary-Treasurer



- Abortion • Counseling
- Vasectomy • Ultrasound
- Free Pregnancy Test

Women for  
Women  
of Cincinnati, Inc.

A Non-Profit Association  
411 Oak Street  
Cincinnati, Ohio 45219  
961-7615

32 Convention Way • Cincinnati, Ohio 45202 • (513) 579-9011

FOOT-LITES  
FOOT-LITES  
FOOT-LITES

Men's and Women's Fashion Shoes

RUTH A. RYALS  
VICE PRESIDENT



PITTSBURGH PENSION PLANNERS, INC.  
55 WYOMING AVENUE  
PITTSBURGH, PENNSYLVANIA 15211  
412-381-7160

CHATHAM  
COLLEGE

Chatham College offers personalized education with a liberal arts focus and a range of pre-professional opportunities for women of all ages. Located on 55 acres in Pittsburgh, the Chatham community enjoys easy access to the corporate, cultural, and educational resources of a vibrant city. Through Chatham's quality liberal arts programs, competence and confidence grow together.

Discover • Chatham College  
Woodland Road • Pittsburgh, Pa. 15232 • (412) 441-8200



## THE BUILDING AND CONSTRUCTION TRADES DEPARTMENT, AFL-CIO

Proudly Salutes . . .

### NWPC

*for its support of greater opportunities  
for all women.*

*Since 1966, women have accounted for more than  
half the growth in union membership.*



The Building and Construction Trades Department, AFL-CIO  
815 16th St., N.W., Washington, D.C. 20006  
Robert Georgine, President • Joseph Maloney, Secretary-Treasurer

## KISTLER ART SUPPLY & FRAMING

Paints / Jewelry / Books / Finest custom framing

VIVIAN C. KISTLER  
President

2661 W. Market St.  
Akron, Ohio 44315

famous since 1967

GOALS FOR THE GREATER AKRON AREA  
A CITIZENS LEAGUE

BARBARA HINEY  
EXECUTIVE DIRECTOR

ONE CASCADE PLAZA - 8TH FLOOR  
AKRON, OHIO 44308  
(216) 375-2176

## Marin - No. 1 (We tried harder)

RUTHANNE GRIMM

Bus: 513-984-1776  
Res. 513-793-0577



CREATIVE PROMOTIONS, INC.  
sales aids - premiums  
incentive awards programs

9456 Kenwood Rd.

Cinci., Ohio 45242

20 varieties of pancakes plus a wide selection of side orders.

- EGGS
- OMELETTES
- PANCAKES  
(20 VARIETIES)
- WAFFLES
- SANDWICHES
- SALADS
- HAND-DIPPED  
SUNDAES

OPEN 7 DAYS A WEEK:  
6:30A.M.-7:00P.M.

on the Skywalk  
between Race and Elm



# PERI'S PANCAKES



Twenty million years ago, the site of Marsha's discovery was a seashore.  
Now it's 40 miles from the sea, and half a mile down.

## Marsha Green took a closer look at a 20-million-year-old seashore and found this new gas field.

For geologist Marsha Green, it was a case of reviewing the evidence just one more time and coming up a winner. After only two years with Gulf Oil, Marsha discovered a new and untapped gas field.

### Spotted a trend

Her find was near Victoria, Texas, which 20 million years ago was a seashore, rich in the marine life that creates natural gas.

There were plenty of producing wells in this general area. The drilling record of each one tells a geologist something new about the earth's structure.

Marsha pored over these records. And she began to spot a trend.

### Textbook curve

Marsha persuaded Gulf management to drill five exploratory wells. Four were dry. But on one, the instrument that detects natural gas went right off the scale. "A real textbook curve," Marsha says.



Marsha persuaded Gulf management to drill a series of exploratory wells.

Such moments are rare. But Marsha is a dedicated professional. "I like to try to figure out what happened millions of years ago," she says, "and put the whole picture together."

Marsha Green. One of 52,000 Gulf people, meeting the challenge.



**Gulf people:  
meeting the challenge.**

Gulf Oil Corporation.

5 STARS Mobil Guide



Maisonette

721-2260

EXHAUSTIVE RESEARCH SUGGEST THAT MEN AND WOMEN POSSESS EQUAL NUMBER OF HANDS

AND HEADS.....



ALL WOMEN OF EVERY RACE & BACKGROUND WITH OUR SENSE OF LIFE CREATING & LIFE SUPPORTING ABILITIES MUST BE ENABLED TO BECOME INVOLVED IN OUR INSTITUTIONS IF WE ARE TO INSURE THE FUTURE OF OUR VERY UNIVERSE. WE MUST LEARN ABOUT OUR INSTITUTIONS AND HELP EACH OTHER BECOME THE CARPENTERS, ELECTRICIANS, PLUMBERS, SOLAR ENERGY EXPERTS INSTEAD OF NUCLEAR ENERGY, AS WELL AS THE ECONOMIST, JUDGES AND LEGISLATORS.

ELECT **JOYCE HARTWELL**  
FOR AT-LARGE DELEGATE N.Y. CAUCUS

For

Innovative Caucus Growth / Energetic Fundraising / Successful Caucus Candidates

VOTE  
MARY STANLEY  
VICE CHAIR  
NWPC



A Republican Feminist Dynamo  
A Grassroots Worker  
A Proven Political Pacesetter

Unanimously endorsed by NWPC of California (29 local caucuses)

Paid for by the members of the Fresno County Caucus, NWPC of California

# "MAGIC TO DO"

a musical revue  
on our intimate cabaret stage



Cincinnati  
Playhouse  
in the park

top quality professional theatre  
Box Office: 421-3888

the old  
spaghetti  
factory

We're right  
down the  
street!

Delicious, full-course spaghetti dinner,  
salad to dessert, for under \$4.  
Forty wines. Mixed drinks. Unique decor.  
Fun atmosphere. And, we're just a few  
blocks West on 2nd St. FREE PARKING.

HOURS:

Monday thru Thursday: 5-10 P.M.  
Friday & Saturday: 5-11 P.M.  
Sunday: 4-10 P.M.

417 W. Second St. • 241-3608  
The Old Spaghetti Factory International, Inc.  
A great idea, with locations nationwide

JACK  
GERSON'S  
ALPHA  
RESTAURANT

We cordially extend an invitation  
to you for breakfast, brunch,  
lunch, and dinner. Featuring  
Cincinnati's largest selection of  
quality foods. Entertainment  
seven nights a week provided by  
Kenny Poole, Rick Lisak, and Milt  
Goedde.

Breakfast, brunch and lunch  
from 7:00 a.m. until 2:30 p.m.,  
dinner from 5:30 p.m. until 11:00  
p.m. Monday thru Friday. Open  
9:00 a.m. until 11:00 p.m.  
Saturday and Sunday.

One block from  
the University of  
Cincinnati cam-  
pus in Clifton  
Heights

204 W. McMillan  
381-6559

# BENTLEY'S

36 WEST FIFTH STREET CINCINNATI, OHIO 45202  
513-241-6663

LUNCH SERVED

10 A.M. - 4 P.M.

DINNER TILL MIDNIGHT

1 A.M. FRIDAY AND SATURDAY



CARRY OUT AVAILABLE

SUNDAY BRUNCH

FROM 11:00 A.M.



HAPPY HOUR

MONDAY THRU FRIDAY

4 P.M. - 7 P.M.

LIVE ENTERTAINMENT  
TUESDAY THRU SATURDAY

9 - 1



LARGE SCREEN TV



Philip Morris Incorporated salutes the  
National Women's Political Caucus and  
its many important accomplishments.

We wish you much continued success  
and hope that your 1979 Convention provides  
the inspiration and motivation to ensure  
even greater achievements in the years  
ahead.

MARLBORO • BENSON & HEDGES • MERIT • PARLIAMENT  
VIRGINIA SLIMS • MILLER HIGH LIFE • LOWENBRAU • 7 UP • DIET 7 UP

To Edna —  
in sisterhood,  
Kia Stein



