

Summer 2012

2012 Illinois Shakespeare Festival Program

School of Theatre and Dance
Illinois State University

Follow this and additional works at: <https://ir.library.illinoisstate.edu/isf>

Part of the [Theatre and Performance Studies Commons](#)

Recommended Citation

School of Theatre and Dance, "2012 Illinois Shakespeare Festival Program" (2012). *Illinois Shakespeare Festival*. 25.
<https://ir.library.illinoisstate.edu/isf/25>

This Book is brought to you for free and open access by the Fine Arts at ISU ReD: Research and eData. It has been accepted for inclusion in Illinois Shakespeare Festival by an authorized administrator of ISU ReD: Research and eData. For more information, please contact ISUReD@ilstu.edu.



Illinois Shakespeare Festival



Celebrating Our 35th Season

Sponsored by

EWING

THE SNYDER COMPANIES

1100 NORTH WOODS ROAD • EWING, ILLINOIS




ILLINOIS STATE UNIVERSITY

Illinois' first public university

2012



The Theatre at Ewing



FRIENDS, ROMANS,
COUNTRYMEN,
lend me your ears...

The Snyder Companies
presenting sponsors of the
2012 Illinois Shakespeare Festival!

SNYDER

THE SNYDER COMPANIES

APARTMENTS | HOTELS | INSURANCE | REAL ESTATE

Dumbarton Oaks
**ILLINOIS
 SHAKESPEARE
 FESTIVAL**

Sponsored by
SNYDER
 THE SNYDER COMPANIES
 APARTMENTS | HOTELS | INSURANCE | REAL ESTATE

2012

35th season

As You Like It by William Shakespeare
 June 27, 28, July 1, 6, 8, 12, 14, 20, 27, August 1, 5, 7, 11

Othello by William Shakespeare
 June 26, 29, 30, July 5, 7, 13, 15, 21, 25, 28, 31, August 3, 9

The Rivals by Richard Brinsley Sheridan
 July 18, 19, 22, 24, 26, 29, August 2, 4, 8, 10

Comedy of Errors by William Shakespeare
 (Theatre for Young Audiences) July 11, 14, 18, 21, 22, 25, 28, August 1, 4, 8, 11

Three Wills and a Shakespeare
 (Green Show Performances) Every night of the Festival!

DEB ALLEY
 Artistic Director

DICK FOLSE
 Managing Director

JANET WILSON
 Producer

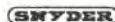
The 2012 Illinois Shakespeare Festival is made possible in part by funding and support provided by individuals, businesses, foundations, government agencies, and organizations. A complete list of Festival contributors is printed on page 26 of the program.



This program is partially supported by a grant from the Illinois Arts Council - a state agency.



ILLINOIS STATE UNIVERSITY
Illinois' first public university



THE SNYDER COMPANIES
 APARTMENTS | HOTELS | INSURANCE | REAL ESTATE



State Farm



A Letter from the President

Dear Friends,

Welcome to the Illinois Shakespeare Festival!

As President of Illinois' first and finest public university, Illinois State University, it is my pleasure to welcome you to the historic grounds of Ewing Manor and this outstanding summer celebration.

This year is particularly exciting because the Illinois Shakespeare Festival is marking its 35th season. Many of us who have been attending the festival for years know how each performance contributes to the vibrancy of our community. And for you newcomers, I know that after experiencing the festival for the first time, you will want to make it an annual tradition.

Illinois State's ongoing support of the Shakespeare Festival represents not only our commitment to the arts, but also adds to the teaching, learning and service mission of the University. It is among the most important ways Illinois State reaches into the community and beyond.

For my family, the Illinois Shakespeare Festival is a highlight of the summer, and I look forward to seeing you soon at Ewing Manor.

Sincerely,



Al Bowman



**ILLINOIS STATE
UNIVERSITY**

Illinois' first public university

Illinois Shakespeare Festival — founded 1978

1978—*As You Like It, Macbeth, Twelfth Night*
1979—*Hamlet, King Henry IV part 1, The Taming of the Shrew*
1980—*The Merry Wives of Windsor, A Midsummer Night's Dream, Romeo and Juliet*
1981—*The Comedy of Errors, Julius Caesar, The Winter's Tale*
1982—*King Henry IV part II, Love's Labour's Lost, Othello*
1983—*Macbeth, Much Ado About Nothing, The Two Gentlemen of Verona*
1984—*Pericles, The Merchant of Venice, The Taming of the Shrew*
1985—*Cymbeline, King Lear, A Midsummer Night's Dream*
1986—*As You Like It, Hamlet, The Tempest*
1987—*Measure for Measure, Romeo and Juliet, Twelfth Night*
1988—*All's Well That Ends Well, The Comedy of Errors, Richard III*

1989—*Henry V, The Merry Wives of Windsor, She Stoops to Conquer* by Oliver Goldsmith
1990—*Julius Caesar, Much Ado About Nothing, The Rivals* by Richard Brinsley Sheridan
1991—*Antony and Cleopatra, Othello, The Taming of the Shrew*
1992—*Macbeth, As You Like It, The Winter's Tale*
1993—*Richard II, Pericles, A Midsummer Night's Dream*
1994—*Romeo and Juliet, Two Gentlemen of Verona, Henry IV part 1*
1995—*Cymbeline, Henry IV part 2, The Comedy of Errors*
1996—*Twelfth Night, The Tempest, The Triumph of Love* by Marivaux
1997—*Hamlet, All's Well That Ends Well, Rosencrantz & Guildenstern are Dead* by Tom Stoppard

Pictured on cover: TOP ROW — Eric Thibodeaux-Thompson, Gerson Dacanay, Corrie Eddleman, Kareem Bandedaly, Lori Adams, Andy Lusher SECOND ROW — Steve Pickering, David Kortemeier and Magdalyn Donnelly, Wendell B. Franklin, Alexander Galick, THIRD ROW — Kate Cook and Wayne T. Carr, Jack McLaughlin-Gray, Elizabeth Larson, Philip Earl Johnson, Kevin Rich, Jessie Dean, FOURTH ROW — Rhys Lovell, Jessie Dean and Zack Powell, Thomas Anthony Quinn, Lori Adams, D.C. Wright, Gabriel V. Ortiz and Jonathan C. Legat, BOTTOM PICTURE: Nathan Stark, Matt Daniels, Jeremy Van Meter, Shawn Wilson, Henson Keys, Ross Frawley, Eddie Collins, Christopher Hirsh, Ewan Fuller

A Letter from the Artistic Director

This is my last program note as Artistic Director. After five wonderfully challenging years, I'm winding down and preparing to hand off the reins to new and capable hands. I'm grateful for the trust that was placed in me, for the chance to grow as an artist and administrator, and for the extraordinary experience of spending so many of my days rubbing shoulders with one of the greatest playwrights in the English language.

Above all else though, I'm thankful I was given the opportunity to meet and work with so many wonderful folks: our dedicated and diligent board of directors; the talented artists who have acted, designed, directed, and built the shows; and of course, you, the audience members who come out to share our stories even when temperatures are in the 90's and skies threaten rain. (One of my favorite memories will always be the *Henry V* audience who refused to leave even after nearly an hour of drenching rain. As they waited under umbrellas, they sang an incongruous but spirited "Take Me Out to the Ballgame." When I finally convinced them we simply could not go on, they insisted on a curtain call and stood in the rain applauding a grateful and overwhelmed cast.)

It's not at all improbable that someone in the audience tonight has been coming to the Festival every year for 35 years. But whether this is your 100th show or your first, I thank you for being here. I hope you have a good time and that you're moved to cry or laugh or think about life in a different way. I also hope you'll spread the word. Email a friend, post something on Facebook. Display your program at work. Buy a t-shirt and wear it. Brag about your support for the arts!

Next year there will be a new face at the gate – one that many of you will recognize. Kevin Rich, who played the title role in *Richard III*, Puck in *Midsummer*, and Porthos in *The Three Musketeers*, will take on a new role – that of Artistic Director. He is a man of tremendous intelligence, talent, and passion, and one of the warmest, most generous human beings I know. His commitment to this Festival and community are already strongly rooted, and I know he will shepherd this organization with care. Please welcome him, as I do, with open arms.

Best regards,

Deb



- 1998—*Much Ado About Nothing, Measure for Measure, The Falcon's Pitch* adapted by Jeffrey Sweet
- 1999—*The Merry Wives of Windsor, Richard III, Wild Oats* by John O'Keefe
- 2000—*Taming of the Shrew, King John, The Three Musketeers* adapted by Eberle Thomas & Barbara Redmond
- 2001—*Love's Labour's Lost, Othello, Coriolanus*
- 2002—*A Midsummer Night's Dream, Romeo and Juliet, The Merchant of Venice*
- 2003—*King Lear, As You Like It, The Knight of the Burning Pestle* by Francis Beaumont & John Fletcher
- 2004—*The Two Gentlemen of Verona, Cyrano de Bergerac* by Edmund Rostand, *Hamlet*
- 2005—*Macbeth, Twelfth Night, Henry VIII*
- 2006—*The Comedy of Errors, Pericles, Julius Caesar*

- 2007—*Much Ado About Nothing, Henry V, Love's Labour's Lost*
- 2008—*The Taming of the Shrew, Titus Andronicus, The Complete Works of William Shakespeare (Abridged)* by Adam Long, Daniel Singer, & Jess Winfield
- 2009—*A Midsummer Night's Dream, Scapin* adapted by Bill Irwin and Mark O'Donnell, *Richard III*
- 2010—*The Tempest, The Three Musketeers* adapted by Robert Kauzlaric, *The Merry Wives of Windsor*
- 2011—*Romeo and Juliet, The Winter's Tale, The Complete Works of William Shakespeare (Abridged)* by Adam Long, Daniel Singer, & Jess Winfield
- 2012—*As You Like It, Othello, The Rivals* by Richard Brinsley Sheridan

Learn more about the history of the Illinois Shakespeare Festival at TheFestival.org

As You Like It

by William Shakespeare

Many themes can be found in Shakespeare's *As You Like It*: sibling rivalry, gender identity, metamorphosis, exile, constitutions of intimacy, classism, city versus country, union, and self-awareness. But what has made this play worthy of producing repeatedly for over four hundred years are two of the most universal truths — community and love.

The court, where our story begins, is riddled with paranoia and backstabbing. This courtly strife, while an impediment, becomes the least of Orlando's worries when he falls in love with Rosalind. Orlando puts women so high up on a pedestal that he is unable to speak in her presence. And if he could speak, whatever he said would be wrong, for Rosalind has romanticized love so much that no real man can live up to her expectations.

Purportedly a rough and wild place where those banished from court live in exile, the Forest of Arden proves to be an environment that nurtures freedom.

Without oppression, former courtiers discover the joys of a simpler life. Emboldened by this freedom (and the pants she wears as Ganymede), Rosalind pretends to "cure" Orlando of his love. By doing so they enjoy an unorthodox courtship that strips their mutual misconceptions of the opposite sex, opens their eyes to the truth of relationships, and allows them to grow from infatuation to love. They gain an understanding of each other... and themselves.

As Orlando, Rosalind, and the other couples (with their own trials) rejoin the exiled courtiers, individual loss is replaced by a collective sense of unity. The relationships of lover-to-lover, brother-to-brother, father-to-child, and man-to-man have been healed with understanding and forgiveness. Fractured souls got lost in a forest but found their bearings. And now they can go home.

— James Alexander Bond

SYNOPSIS

Near the Forest of Arden lies a noble court where many abrupt changes have left the people in a state of turmoil. The old duke, Duke Senior, has been banished to the forest by his younger brother, Duke Frederick, leaving behind his daughter, Rosalind. Meanwhile, a youth named Orlando enters a wrestling match in the hopes of winning money to escape the tyranny of his elder brother, Oliver. During the match, Rosalind and Orlando meet and fall in love. After the victory, when Frederick discovers that Orlando's father is out of favor, he denies him the prize money. With no

other options, Orlando must escape to the forest to avoid the wrath of his brother and the Duke.

Fearing that Rosalind is drawing attention from his own daughter, Celia, Frederick banishes her to the forest as well. Rosalind dresses as a man to protect herself for her escape, and takes Celia, her best friend, and the fool Touchstone along with her. In the forest, where lovers and fools abound, Rosalind encounters Orlando, and through her male disguise learns more about his heart as well as her own. In the end, both Frederick and Oliver are reformed, and we find that true love isn't a fairy-tale — it's about honest connection.

babbitt's



books

A general used book store with over 100,000 books in stock as well as a good selection of prints, postcards, and general ephemera.

Visit us online at www.babbittsbooks.com.

Babbitt's Books
119 E Beaufort St
Normal IL 61761
309.454.7393

Check out our selection of books and prints in the Festival gift shop

Dramatis Personæ

Orlando	DYLAN PAUL ^Æ
Adam, Corin	HENSON KEYS ^Æ
Oliver	DAVID PRICE [‡]
Dennis, Forester, Wedding Planner, Ensemble	ANDREW ROGALNY, JR. [‡]
Charles, William	ALEXANDER PAWLOWSKI IV [‡]
Celia	AMANDA CATANIA ^Æ
Rosalind	GRACYN MIX [‡]
Touchstone	NICK DEMERIS
LeBeau, Forester, Hymen	ZACK POWELL [‡]
Duke Frederick	MATT PENN ^Æ
Silvius, Duke Frederick's Lord	CHARLIE WRIGHT
Duke Frederick's Lady, Forester, Wedding Planner	KATE McDERMOTT [‡]
Duke Senior's First Lord, Ensemble	TREVON JACKSON
Amiens	ANDY TALEN [‡]
First Page, Ensemble	DEVON NIMERFROH
Sir Oliver Martext, Forester, Ensemble	MICHAEL GAMACHE [‡]
Duke Senior	DAVID SITLER ^Æ
Jaques	DAVER MORRISON ^Æ
Audrey	MOLLY ROSE LEWIS [‡]
Phebe	LISA WARTENBERG [‡]

Understudies: Michael Gamache[‡] (Duke Senior), Trevon Jackson (Martext), Kate McDermott[‡] (Celia),

Devon Nimerfroh[‡] (Adam/Corin, Amiens), Alexander Pawlowski IV[‡] (Duke Frederick, Jacques),

Andrew Rogalny, Jr.[‡] (Orlando, William), Carlos Kmer[‡] (Duke Senior Lords 1 & 2, Wedding Planner, 1st Page)

^ÆMember of Actors' Equity Association [‡]Equity Membership Candidate ^{USA}United Scenic Artists



Director	JAMES ALEXANDER BOND
Costume Designer	RACHEL LARITZ ^{USA}
Scenic Designer	JOHN STARK ^{USA}
Lighting Designer	JULIE MACK ^{USA}
Sound Designer/Composer	MICHAEL RASBURY
Stage Manager	JAYSON T. WADDELL [‡]
Voice/Text Coach	KEVIN RICH
Fight Director/Choreographer	ALEX MILLER
Dance Choreographer	GREG MERRIMAN

I have it. It is engendered. Hell and night
Must bring this monstrous birth to the world's light. (Iago, Act I, Scene 1)

Othello begins in darkness and is made darker by the blood of innocents. At times the darkness lifts and the bright light of the human spirit shines through, but Shakespeare provides few such moments. Darkness predominates, and the corrupting nature of man prevails. *Othello* is a painful chronicle of the profound need for love gone awry.

According to Harold Bloom, *Othello* is Shakespeare's "most painful play" and "when properly performed" he says, "should be a momentary trauma for the audience." A.C. Bradley agrees that "of all Shakespeare's tragedies...*Othello* is the most painfully exciting and the most terrible." James Earl Jones maintains that *Othello* is not about the torments of jealousy, as is commonly held, but rather about the ravages of insanity. Iago would probably argue that this distinction is too fine:

...yet that I put the Moor
At least into a jealousy so strong
That judgment cannot cure...

...And practicing upon his peace and quiet
Even to madness... (Iago, Act II, Scene 1)

In the first moments of the play, Iago declares his hatred for Othello—"I do hate him as I hate hell pains"—then reveals that he harbors such feelings because Othello promoted Michael Cassio to the rank of lieutenant, a position he himself coveted. Subsequently, Iago vows to seek revenge for what he perceives to be a deliberate insult. With this decision, the force of Iago's malevolent will—"I hate the Moor"—and the power and depth of his need—"[I'll] make the Moor thank me, love me, and reward me"—combine into a virulence that transforms the world of *Othello*. Iago turns the play inward; he takes it to a shadowy, subterranean place where "the green-eyed Monster Jealousy" roams, where the senses are tormented by things unseen but suspected, where the psyche is fractured by imagined doings, where the spirit is crushed by betrayal, and where what is real is no longer knowable. This is the place into which all the characters of the play descend at one time or another, and where some perish, never to see the light again. Here, in the grips of an insane jealousy, Othello commits the most tragic, heartbreaking act of the play—he takes the life of Desdemona, whose love was pure and immutable. To witness such senselessness is cathartic for the characters and, as Bloom suggests, excruciating and traumatic for the audience.

Othello is a disquieting play. Not only are we disquieted by the heinous actions depicted onstage, but we are also made anxious by their possibility in our own lives. The impulses that give rise to the actions of Iago and Othello are not unfamiliar to us: Who has not envied another's position? Who has not felt the gnawings of jealousy? Who has not wished revenge for some perceived indignity?

The hope is always, with the presentation of such troubling stories as *Othello*, that the suffering we witness will awaken us to ourselves, and perhaps inspire us to examine our own needs and motives with a clearer eye. The painful descent into darkness that tragedy demands may, in some meaningful way, finally serve to enlighten us.

— John Sipes



*Espresso Perfections
and Bakery Delights*

Coffee Hound Normal • 207 W. North St.
Coffee Hound Bloomington • 407 N. Main St.
www.coffeehound.net

Dramatis Personæ

Iago	MATT PENN ^Æ
Roderigo	CHARLIE WRIGHT
Brabantio	HENSON KEYS ^Æ
Ensemble	DYLAN PAUL ^Æ
Ensemble	NICK DEMERIS
Othello	DAVER MORRISON ^Æ
Cassio	ANDY TALEN [†]
Ensemble	MICHAEL GAMACHE [†]
Ensemble	ANDREW ROGALNY, JR. [†]
Lodovico	ZACK POWELL [†]
Ensemble	DEVON NIMERFROH [†]
Duke of Venice	DAVID SITLER ^Æ
Gratiano	ALEXANDER PAWLOWSKI IV [†]
Desdemona	AMANDA CATANIA ^Æ
Montano	DAVID PRICE [†]
Emilia	CORLISS PRESTON ^Æ
Bianca	KATE MCDERMOTT [†]

Understudies: Michael Gamache[†] (Duke of Venice), Ashlyn Hughes^Æ (Emilia), Treyon Jackson (Othello), Carlos Kmet[†] (Roderigo), Alexander Pawlowski IV[†] (Brabantio and Lodovico), Molly Rose Lewis[†] (Desdemona), Zack Powell[†] (Iago)

^Æ Member of Actors' Equity Association [†] Equity Membership Candidate ^{USA} United Scenic Artists



The Director is a member of the
STAGE DIRECTORS AND CHOREOGRAPHERS
SOCIETY, a national theatrical labor union.

Director/Fight Director	JOHN SIPES
Costume Designer	HELENE SIEBRITS ^{USA}
Scenic Designer	JOHN STARK ^{USA}
Lighting Designer	JULIE MACK ^{USA}
Composer/Sound Designer	MICHAEL RASBURY
Stage Manager	SARA BUBENIK ^Æ
Voice/Text Coach	KEVIN RICH
Dance Choreographer	GREG MERRIMAN

SYNOPSIS

Othello the Moor, General of the Venetian army, has eloped with Desdemona. Roderigo, who has romantically pursued Desdemona, is distraught. Othello's ensign Iago assures Roderigo that he hates the Moor and that he will restore Desdemona's love to the heart-sickened Venetian. He begins plotting to destroy Othello.

Othello is sent to defend Cyprus from the Turks. As he journeys there, a storm destroys the Turkish fleet, ending the invasion. In a night of celebration, Iago gets Cassio drunk. A brawl begins, and Cassio wounds Montano, a highly-regarded official in Cyprus. Othello rebukes Cassio and dismisses him as his lieutenant. Iago advises Cassio to plead his case to Desdemona who will in turn use her influence with Othello to reinstate him to his position. Iago uses this device to make Othello think Desdemona pleads out of an illicit love for Cassio.

Othello is skeptical and demands proof of infidelity. Iago plants Desdemona's handkerchief on Cassio. When Othello sees this, he is convinced of Desdemona's guilt, flies into a rage, and asks Iago to kill Cassio.

In turn, Iago convinces Roderigo to attack Cassio by night, but Roderigo is injured in the fight. Under cover of darkness, Iago stabs Cassio and kills Roderigo.

Made mad by jealousy, Othello smothers Desdemona in her bed. Discovering the death of her mistress, Iago's wife reveals the lies and manipulations. Othello attacks Iago and begs for Cassio's forgiveness. Asking that his tragic story be reported justly, Othello stabs himself and dies upon the bed of his wife.

The Rivals

by Richard Brinsley Sheridan

Written in 1774 and first produced at the Covent Garden Theatre in January of 1775, *The Rivals* was Richard Brinsley Sheridan's first attempt at play writing. At the time, Sheridan was desperate to support a social lifestyle that was beyond his means. As Mark S. Auburn remarks in his book, *Sheridan's Comedies*, Sheridan had been "raised with many of the advantages of a gentleman, money excepted," and was therefore "suited to no career which required more than wit, charm, and intelligence." The theatre was a natural fit, particularly as his father had been an actor/manager and his mother a playwright and novelist. *The Rivals* had a rocky first night, precipitating a number of rewrites, but ultimately the play proved popular. Along with Sheridan's *School for Scandal*, the play has a long record of successful productions.

The Rivals, with its commentary on romantic love and class pretensions, is filled with autobiographical references. Sheridan's family moved to Bath, England in 1770. Two years later, the 20-year old Sheridan defied his father's exaggerated class expectations and eloped with Elizabeth Linley, one of the most popular songstresses of the time. Later that year Sheridan fought two duels with Thomas Mathews, Elizabeth's former beau. Unlike the play, where these events are treated with a light

comic touch, Sheridan's real life choices had more serious consequences. His father broke off all relations with him and the final duel (at least according to one account) resulted in serious – though not fatal – injuries to Sheridan.

While the plot of *The Rivals* involves some complexity, the play's real charm derives from its witty wordplay and a cadre of eccentric but lovable characters. Chief among these is Lydia's guardian, the inimitable Mrs. Malaprop. While Sheridan did not create the word "malaprop" (meaning the misuse of a word that sounds like another), his comic creation certainly helped to popularize the term. Whether she is advising Lydia "to illiterate [Beverly] quite from your memory" or expounding on the merits of having a young woman "instructed in geometry that she might know something of the contagious countries," Mrs. Malaprop is part of a rich literary tradition of comic characters like Dogberry in *Much Ado* and Bottom in *A Midsummer*. Certainly in writing *The Rivals*, Sheridan drew from the richness of his theatrical heritage - including the works of William Shakespeare.

— Deb Alley

Strive mightily, but
eat and drink
as friends.

— *The Taming Of The Shrew*,
Act 1, scene 2



We hope you enjoyed your personalized lunch basket from Kelly's.
Visit us soon in Downtown Bloomington to try our full menu!

SHAKESPEARE SPECIAL:

Bring in your ISF ticket stub and receive 10% off your meal

(Offer ends Aug. 16, 2012. Does not include catering or custom bakery orders.)



Dramatis Personæ

Fag.	NICK DEMERIS
Thomas	MICHAEL GAMACHE [‡]
Jack Absolute	DYLAN PAUL ^Æ
Lucy	AMANDA CATANIA ^Æ
Lydia	GRACYN MIX [‡]
Julia	LISA WARTENBERG [‡]
Mrs. Malaprop	CORLISS PRESTON ^Æ
Sir Anthony Absolute	DAVID SITLER ^Æ
Faukland	ANDY TALEN [‡]
Bob Acres	ALEXANDER PAWLOWSKI IV [‡]
Sir Lucius O'Trigger	MATT PENN ^Æ
David	TREVON JACKSON
The Servants	MATT BLACK, MEGAN CHANEY, BRANDON ROSEN, JOSH SAMANIEGO

Understudies: Molly Rose Lewis[‡] (Lucy), Kate McDermott[‡] (Mrs. Malaprop), Devon Nimerfroh[‡] (Sir Lucius O'Trigger), David Price[‡] (Jack Absolute, Thomas), Andrew Rogalny, Jr.[‡] (Sir Anthony Absolute)

^ÆMember of Actors' Equity Association [‡]Equity Membership Candidate ^{usa}United Scenic Artists

Director	DEB ALLEY
Costume Designer	DOTTIE ENGLIS ^{usa}
Scenic Designer	JOHN STARK ^{usa}
Lighting Designer	JULIE MACK ^{usa}
Sound Designer	MAX KREMBS
Stage Manager	DANIEL D. DRAKE [‡]
Fight Director/Choreographer	ZACK POWELL [‡]
Voice/Text Coach	KEVIN RICH

SYNOPSIS

It's 1773 and the fashionable English upper class has come to Bath to socialize, parade their finery, and "take the waters". The young Miss Lydia Languish spends her time immersed in popular romance novels, filling her head with stories of "the most sentimental elopements" and the promise of living in the "pretty distress" of poverty. She is determined to defy her guardian aunt, the word-mangling Mrs. Malaprop – giving up her considerable inheritance to run away with the poor but handsome Ensign Beverley. Little does she know that the lowly Ensign Beverley is actually the wealthy

Captain Jack Absolute, disguised to win her affections. Jack's elaborate deception begins to unravel when his father, Sir Anthony Absolute, suddenly appears in Bath and unexpectedly arranges Jack's engagement to Miss Languish. With the truth revealed, Jack must overcome Lydia's mortification at finding herself destined for the most ordinary of weddings. Jack is on the verge of losing her – until rivals step forward and challenge the ensign and the captain to duels. Imagining the worst, Lydia rushes to him and admits her love for the one and only real Jack.

Comedy of Errors

by William Shakespeare

Theatre for Young Audiences Production

Egeon	MICHAEL GAMACHE [†]
Abbess, Ensemble	ASHLYN HUGHES [†]
Dromio of Syracuse	CARLOS KMET [†]
Adriana	MOLLY ROSE LEWIS [†]
Luciana	KATE McDERMOTT [†]
Dromio of Ephesus	DEVON NIMERFROH [†]
Antipholus of Ephesus	ZACK POWELL [†]
Duke, Pinch, Angelo, Ensemble	ANDREW ROGALNY, JR. [†]
Antipholus of Syracuse	CHARLIE WRIGHT

Understudies: Andrew Rogalny, Jr.[†] (Egeon), Ashlyn Hughes[†] (Adriana)

Æ Member of Actors' Equity Association † Equity Membership Candidate ‡ USA United Scenic Artists

Director	JAMES WAGONER
Costume Designer	JUDITH RIVERA-RAMIREZ
Scenic Designer	CHRIS WYCH
Stage Manager	HANNA SUPANICH-WINTER
Fight Director	ZACK POWELL [†]
Voice/Text Coach	KEVIN RICH

The joy of reunion with its promise of reconciliation is one of the most glorious themes in Shakespearean literature. In *Comedy of Errors*, Shakespeare celebrates the restoration of a family torn apart by a shipwreck and separated for many years.

Our story starts in Ephesus, a city at odds with its enemy, Syracuse. Egeon, a Syracusan, has stumbled into Ephesus and been arrested. Egeon explains to the Duke that he has come to Ephesus in search of his family – a wife, a son (one of a pair of identical twins), and a servant (curiously enough, also an identical twin). The Duke is moved by his tale but sentences him to death unless he can raise one thousand marks by nightfall.

Unbeknownst to Egeon, the son and servant he saved from the wreck have also stumbled into Ephesus in

search of their missing halves. And unbeknownst to any of them, the missing wife, along with the twin son and servant are (rather miraculously) living in Ephesus.

As Antipholus (the son) and Dromio (the servant) wander about the town, the comedy of errors begins. The locals repeatedly mistake the foreign twins for their native doubles, and the confusion is compounded by the fact that both sets of twins share the same names. Even Antipholus of Ephesus' wife Adriana and her sister Luciana are fooled.

The mix-ups result in Antipholus of Ephesus being arrested for debt and declared mad, while Antipholus of Syracuse takes refuge from his brother's angry wife in a Priory where the abbess turns out to be Egeon's long-lost wife. All is resolved in the end, Egeon is freed, the family is reunited, and the community restored.

Thanks to our
media friends!

— THE —
PANTAGRAPH



ILLINOIS SHAKESPEARE FESTIVAL PRESENTS
MIDWESTERN VOICES
PLAYWRIGHTS FESTIVAL

PHILIP DAWKINS



MISS MARX:

the involuntary side effect of living

by **PHILIP DAWKINS**

July 15, 3:00pm

Karl Marx's youngest daughter Eleanor is every bit the socialist revolutionary her father was. As she fights her way through Late Victorian England, Eleanor challenges the way women are expected to behave politically, domestically, and sexually. Amidst her struggle to create a world where every human being is respected and loved, she finds it impossible to escape her own masochistic relationship with fellow socialist, Edward Aveling. *The Involuntary Side Effect of Living* brings to life a searing time in history, the socio-political environment providing a charged backdrop against which these characters navigate love, loss, and betrayal.

JENNIFER BLACKMER



ALIAS GRACE

by **JENNIFER BLACKMER**

from the novel by Margaret Atwood

July 29, 3:00pm

In 1859 Canada, Grace Marks, a notorious murderess serving a life sentence, meets Dr. Simon Jordan, a young psychologist and up-and-coming expert on memory loss. As they together unlock the enigmatic details of Grace's past and the grisly murders of her two employers, the real truth of her guilt or innocence eludes them both, and leads Simon on a complex journey into his own history. Is Grace an innocent victim of circumstance? A scheming femme fatale? Based on a true story and adapted from the novel by Margaret Atwood, *Alias Grace* is both mystery and revelation, a tantalizing exploration of memory, desire, and the darkest places of the human mind.

IKE HOLTZER



HELL-CARE

by **IKE HOLTZER**

August 5, 3:00pm

When a young Chicagoan suffers a shattering injury, he finds himself in the arms of an organization that offers free Health Care to all who pass a test. Over the course of a five-day-trial period, he is thrust into the world of "Hell-Care"; a no-holds-barred game of quid-pro-quo that forces patients to choose what they value most: their health, or their sanity.

FREE PERFORMANCES HELD AT

THE VROOMAN MANSION

701 East Taylor Street
Bloomington, IL 61701



**THE ILLINOIS
SHAKESPEARE FESTIVAL**

Three Wills & a Shakespeare

Green Show Productions

— Every night of the Festival —

The Dating Game: Brooders, Bad Boys, and Villains

(The Bachelorette Version)

Host-Iago	CARLOS KMET
Contestant #1	JESSIE SWIECH
Contestant #2	TAYLOR WISHAM
Contestant #3	ASHLYN HUGHES

(The Bachelor Version)

Host-Lady Macbeth	JESSIE SWIECH
Contestant #1	CARLOS KMET
Contestant #2	ARIF YAMPOLSKY
Contestant #3	JASON RAYMER

The world of William Shakespeare may be full of passionate lovers, but that doesn't mean his villains don't deserve their own shot at romance! This show is a wicked good time where one lucky audience member will get to meet the man or woman of their screams...uh...I mean dreams!

Survivor: Othello Edition

Iago	CARLOS KMET/ARIF YAMPOLSKY
Desdemona	JESSIE SWIECH
Othello	JASON RAYMER
Cassio/Brabantio/Emelia	TAYLOR WISHAM

Four actors enter the arena to perform an abridged version of Othello, but in the end, only one will remain...Which one? Only YOU will decide! Like the TV show of the same name, these brave actors will be voted off of the show until only one is left to perform all the parts - by themselves!

A Very Puppet Shakespeare-ience

(written by Jessie Swiech)

Violet	ASHLYN HUGHES
King Works/Dad	JASON RAYMER
Queen Complete/Mom	TAYLOR WISHAM
Puppeteer	ARIF YAMPOLSKY

Violet's parents are making her clean all of the old junk out of the attic. However, when she tries to throw away an old, dusty book entitled, *The Complete Works of William Shakespeare*, she meets a puppet King and Queen who have other plans. Join Violet for her magical journey as she is swept into the diverse worlds and fascinating characters created by William Shakespeare.

Director	LORI ADAMS
Assistant Director	JEREMY GARRETT
Costume Designer	LAUREN LOWELL
Puppet Coach	MICHAEL VETERE

The Official Hair and Wig Stylists of the Illinois Shakespeare Festival

F I R S T



E D I T I O N

A premier full service salon where not tipping is our professional policy

309.829.4247

816 E. Washington St. • Bloomington, IL 61701

www.firsteditiononline.com

FREAKY FAST!
FREAKY GOOD!



207 W. NORTH ST.
309.452.8200
NORMAL

305 S. MAIN ST.
309.451.1800
NORMAL

2301 E. WASHINGTON ST.
309.664.6800
BLOOMINGTON

203 W. MARKET ST.
309.828.3300
BLOOMINGTON

©2003 JIMMY JOHN'S FRANCHISE, LLC. ALL RIGHTS RESERVED.

Acting Company



Amanda
Catania



Nick
Demeris



Michael
Gamache



Ashlyn
Hughes



Trevon
Jackson



Henson
Keys



Carlos
Kmet



Molly Rose
Lewis



Kate
McDermott



Gracyn
Mix



Daver
Morrison



Devon
Nimerfroh



Dylan
Paul



Alexander
Pawlowski IV



Matt
Penn



Zack
Powell



Corliss
Preston



David
Price



Andrew
Rogalny, Jr.



David
Sitler



Andy
Talen



Lisa
Wartenberg



Charlie
Wright



AMANDA CATANIA— Celia (*As You Like It*), Desdemona (*Othello*), Lucy (*Rivals*) — Amanda is thrilled to be a part of the Festival's 2012 season. Recently Amanda played Juliet in The Shakespeare Project of Chicago's 50-minute production of *Romeo and Juliet*. Other credits include: *Othello*, *The Three Musketeers*, *Comedy of Errors*, *Charlotte's Web* (Alabama Shakespeare Festival), *Julius Caesar*, *Catch-22* (Aquila Theatre Company national tour) *Twelfth Night*, *Much Ado About Nothing* (Aquila Theatre Company), and a staged reading of *The Iliad* (Classic Stage Company). Amanda holds a B.F.A. from New York University's Tisch School of the Arts.

NICK DEMERIS— Touchstone (*As You Like It*), Ensemble (*Othello*), Fag (*Rivals*) — Nick is absolutely thrilled to be working at the Festival this summer. Favorite credits include the world premiere of *Agnes Under the Big Top* (Mixed Blood Theatre/Arena Stage), *Moby Dick Rehearsed* (State Theatre Chicago) & playing Ferdinand in the *Tempest* (Great River Shakespeare Festival). He has most recently been seen dotting stages all across New York, performing his original solo act which combines Clown, vocal improvisation, beat boxing & Hip Hop; a modern version of Shakespeare's fool. Aside from theatre, solo work, creating original marketing campaigns and music videos, he also teaches workshops (k-12 & collegiate) on the parallels between Hip Hop & Shakespeare. You can see more of his work at www.NickDemeris.com.

MICHAEL GAMACHE— Sir Oliver Martext (*As You Like It*), Ensemble (*Othello*), Thomas (*Rivals*), Egcon (*Comedy*) — Michael is excited to be back for his second summer with the Festival. He recently graduated from Illinois State University with an M.F.A. in classical acting. He would like to thank his professors, classmates, and the community of Bloomington/Normal for helping him grow as an artist and as a person. Please enjoy the show!

ASHLYN HUGHES— Abbess/ Ensemble (*Comedy*) — Ashlyn Hughes, a native of Wisconsin, is happy to be here at the Illinois Shakespeare Festival for the very first time. Ashlyn is entering into her senior year at Illinois State University as an acting major in the School of Theatre. This summer she will be first and foremost playing in the green shows as front of house entertainment, helping with outreach and camps affiliated with the Festival, and will also be understudying the role of Adriana in *The Comedy of Errors*. Many thanks need to be granted for this wonderful opportunity.

TREVON JACKSON— First Lord (*As You Like It*), David (*Rivals*) — Trevon is a recent M.F.A. acting graduate of the University of Wisconsin-Madison. From Austin, Texas, he made his Wisconsin debut in 2009 in Federico Garcia Lorca's *Blood Wedding*, followed by *Into the Woods* (the Narrator), Music Theatre of Madison's *The Wild Party* (Sam), John Steinbeck's *The Grapes of Wrath* adapted for stage (Noah/others), CTM's production of *Most Valuable Player* (Jackie Robinson), *You Can't Take It With You* (Donald), Forward Theatre Company's *The*

Farnsworth Invention (Stan Willis) and most recently August Wilson's *Ma Rainey's Black Bottom* (Levee) as well as *Two Gentlemen of Verona* (Outlaw 1). He is excited to become a part of the Illinois Shakespeare Festival acting team.

HENSON KEYS— Adam/ Corin (*As You Like It*), Brabantio (*Othello*) — Henson is a veteran of over 120 productions as an actor and director in New York and with professional theatres across the country, including the New York, Utah, Alabama, North Carolina, and Illinois Shakespeare Festivals, the McCarter Theatre (Princeton), Yale Repertory, Asolo (Sarasota), Walnut Street (Philadelphia), Meadowbrook (Detroit) Folger (Washington, DC), Cleveland Playhouse, and Coconut Grove (Miami). Henson has performed in 32 Shakespeare productions, in roles ranging from Richard III to Malvolio to Jaques to Lear's Fool and Lear himself. Recent professional directing work includes *Julius Caesar* and *Much Ado About Nothing* for North Carolina Shakespeare and four opera productions for the UIUC School of Music. Previously he headed graduate actor training programs at Ohio University and at Alabama Shakespeare. Since 1999, he has been Chair of Acting Programs at the University of Illinois, Urbana-Champaign.

CARLOS KMET— Dromio of Syracuse (*Comedy*) — Carlos Kmet is very excited to be a part of the Illinois Shakespeare Festival for the first time. I owe it all to my mother, Francisca Kmet, for sacrificing so much just to make sure that I could go to school and try my best to achieve my dreams. This is the first step, Mom, and you're coming with me! I'd also like to thank Deb, Dick Folse, Lori Adams, the wonderful staff of the Festival, and the company for their constant support and for teaching me so much this summer. I finally feel brave enough to face the tough road that lies ahead of me. Thank you. I hope you enjoy your time at the Illinois Shakespeare Festival!

MOLLY ROSE LEWIS— Audrey (*As You Like It*), Adriana (*Comedy*), Assistant Voice/Text Coach (*Othello*) — Molly Rose Lewis just received her M.F.A. in Classical Acting from Illinois State University, and is thrilled to return to the Festival for a second summer! She is a native of the San Francisco Bay Area, and has also lived in Italy, Connecticut and Maui. Many thanks to family, friends, colleagues, and teachers for continuing support!

KATE McDERMOTT— Duke Frederick's Lady/ Forester (*As You Like It*), Bianca (*Othello*), Luciana (*Comedy*), Festival Dance Captain — Kate is very excited to be returning to the Festival for a second summer. Recent local credits include *Mauritius* (Mary) and *Three Sisters* (Olga) at Heartland Theatre. Kate was seen on the Festival's stage last year in *Romeo and Juliet* (Balthasar), *Winter's Tale* (Mopsa), and *Twelfth Night* (Maria). She also toured with the Festival's Outreach program in the Spring of this year in and ensemble production of *Macbeth*. Kate is a recent graduate of Illinois State University's M.F.A. Classical Acting program, and has her B.A. in Musical Theatre from California State University East Bay.



host
Kevin Kelly
with
Rachel Barton Pine

Live & Local

your performance connection

weekdays at noon  willfm90.9

GRACYN MIX— Rosalind (*As You Like It*), Lydia (*Rivals*) — Gracyn is thrilled to be acting at the Illinois Shakespeare Festival for her first time. She has appeared regionally at the Great River Shakespeare Festival as Lavinia in *Titus Andronicus* and Shakespeare Dallas as Sister Claire in *Cyrano de Bergerac*. At Southern Methodist University she played Desdemona in *Othello*, Lily in *The Striker*, and Lydia in *Big Love*. Gracyn completed her B.F.A. in Acting from SMU in May and studied prior at the South Carolina Governor's School for the Arts and Humanities.

DAVER MORRISON— Jaques (*As You Like It*), Othello (*Othello*), Crossroads Project Artist — Daver holds a Bachelor of Fine Arts degree from Ithaca College. Favorite theatre credits: Davenport in *A Soldier's Play*, Macduff in *Macbeth*, Algernon in *The Importance of Being Earnest*, Lincoln in *TopDog UnderDog*, Stanley Kowalski in *A Streetcar Named Desire* directed by Obie Award-winner Robbie McCauley. Television credits

include 24, *All My Children*, *General Hospital*, *One Life to Live*. Daver is the voice of Haywood Patterson in the academy Award-nominated documentary *Scottsboro: An American Tragedy* — the film won the Emmy for Best Non-Fiction Special for its airing on PBS' *The American Experience*.

DEVON NIMERFROH— Ensemble (*As You Like It*), Ensemble (*Othello*), Dromio of Ephesus (*Comedy*), Assistant to the Fight Captain, Backstage Tour Guide — Devon is an acting major at Illinois State University. His most recent credits include Iago in *Othello* and Howard in *Picnic*.

DYLAN PAUL— Orlando (*As You Like It*), Ensemble (*Othello*), Jack Absolute (*Rivals*) — Dylan is delighted to return for his second season with the Festival, where he previously played Romeo in *Romeo and Juliet* and Antonio in *Twelfth Night*. A recent MFA graduate of the professional actor Training Program with the University of Houston, his favorite roles have included Septimus Hodge in *Arcadia*, Billy Bigelow in *Carousel*, Paul in *Moon Over Buffalo*, and the title role in *Hedwig and the Angry Inch*. As a voice and speech enthusiast, he has redesigned the International Dialects of English Archive, travelled internationally for speech research, and is the 2012 recipient of the Voice and Speech Trainers Association Clyde Vinson Memorial Scholarship. More at www.dylanpaul.net

ALEXANDER PAWLOWSKI IV— Charles/ William (*As You Like It*), Gratiano (*Othello*), Bob Acres (*Rivals*) — Born and raised in Oregon, Alex has spent the past two years as a member of Milwaukee Repertory Theater's Apprenticeship program, where he played Boo Radley in *To Kill a Mockingbird* and understudied such iconic roles as Iago and Willy Loman. He will be returning to the land of dairy and lager after this summer, to embark on a hopefully burgeoning and lucrative career. None of this would be possible without the love and support of his family and his one-in-a-million true love Mariel. Education: B.A. University of Oregon, M.F.A. West Virginia University. Favorite roles include: *Danny and the Deep Blue Sea*, Marcus in *Another Part of the Forest*, Falstaff in *Henry IV*, and the title role in *Macbeth*.

MATT PENN— Duke Frederick (*As You Like It*), Iago (*Othello*), Lucius O'Trigger (*Rivals*) — Mr. Penn most recently worked with Nebraska Repertory in *Becky's New Car* and *The 39 Steps*. He was part of the highly controversial production of *Camino Real* directed by the Spanish opera director Calixto Bieito at the Goodman Theatre this past spring. He spent two summers with the Colorado Shakespeare Festival as Prospero in *The Tempest*, Jacques in *As You Like It*, and Antigonus in *Winter's Tale*, and productions with the Alabama, Vancouver and St. Louis Shakespeare Festivals. He has performed around the world in such roles as Matamore in *The Illusion*, Demetrius in *Antony and Cleopatra* and Mustardseed in an MTV-style *A Midsummer Night's Dream* (Stratford Festival, Canada), and the world premiere of Steven Dietz's play *Silence* in Tokyo, Japan. A native of Chicago, Mr. Penn has performed

with Chicago Shakespeare Theatre, Goodman Theatre, Northlight Theatre, New American Theatre, Shaw Chicago, and the Cypress Group.

ZACK POWELL— Le Beau/ Hymen (*As You Like It*), Lodovico (*Othello*), Antipholus (*Comedy*), Fight Director (*The Rivals*), Assistant Fight Director (*As You Like It/ Othello*) — Zack Powell is excited to be performing his second season at the Festival this summer. He has just graduated with his M.F.A. in Acting from Illinois State University! Special thanks to Henry Woronicz, Deb Alley, Connie de Veer, Paul Dennhardt, the eight, and his incredible family for all their love and support.

CORLISS PRESTON— Emilia (*Othello*), Mrs. Malaprop (*Rivals*) — Most recently Corliss performed the role of Desiree Armfeldt from *A Little Night Music* in beautiful Vermont. New York Credits: *A Piece of My Heart* (Manhattan Theatre Club), *Cherry Orchard* (York Theatre Company), *Erotica Project* (Public Theatre), *The Hired Man* (47th Street Theatre), and *Boss Grady's Boys* (78th St. Theatre Lab). She has performed regionally at The Alley (Houston), Actor's Theatre of Louisville, Denver Center, Yale Repertory, Goodman, Lyric Theatre of Oklahoma, Arizona Theatre Company, Missouri Repertory, Baltimore Center Stage, Studio Arena, Cincinnati Playhouse in the Park, and the Utah (10 seasons), Alabama, Santa Fe, and Oregon Shakespeare Festivals. Corliss also does commercial voice-overs. She trained at IU and the Bristol Old Vic Theatre School in England.

DAVID PRICE— Oliver (*As You Like It*), Montano (*Othello*) — David received his B.F.A. in Acting from Southern Methodist University. This is his first appearance at the Illinois Shakespeare Festival. He has appeared professionally in Dallas at the Dallas Theatre Center and Theatre Three.

ANDREW ROGALNY, JR.— Dennis/ Ensemble (*As You Like It*), Ensemble (*Othello*), Duke/ Ensemble (*Comedy*), Backstage Tour Guide — Andrew is an acting intern for the summer festival and is working toward his bachelor's degree in Theatre (Acting) at Illinois State University. Previous Shakespeare credits include *The Merchant of Venice* (Antonio) and *Two Gentlemen of Verona* (Thurio), both at Illinois State. He would like to thank all of his close friends and family for their continued care and support.

DAVID SITLER— Duke Senior (*As You Like It*), Duke of Venice (*Othello*), Anthony Absolute (*Rivals*), John Stevens Equity Actor — David is thrilled to be back at the Festival for a second season. In his debut here in the 2010 season, he played Prospero in *The Tempest*, *Three Musketeers* (Treville) and *Merry Wives of Windsor* (Shallow). He was last seen in the critically acclaimed *Beyond the Horizon* at Irish Rep in NYC and has been on Broadway (*An Inspector Calls*), on tour in *Frost/Nixon* with Stacy Keach, and regionally from Maine to Utah in roles from Articus to Scrooge. Film and TV credits include *The Challenger*, *Ghetto Dawg* and *Law and Order*



Burr House

Bed & Breakfast

210 E. Chestnut, Bloomington, IL

- Franklin Park Historic District
- 6 Rooms, 1 Suite
- Full Breakfast

We also host
Weddings, Meetings.

Ph: (309) 828-7686

www.burrhouse.com

SIU. Thanks to all at the Festival, Judy Boads and wife/actor Carolyn Popp. More info at www.davidstitler.com. Proud member of Actor's Equity and honored to be this year's recipient of the John Stevens Equity Actor award

ANDY TALEN— Amiens (*As You Like It*), Cassio (*Othello*), Faulkland (*Rivals*) — Andy has previously been seen at the Illinois Shakespeare Festival as Benvolio in *Romeo and Juliet*, Florizel in *The Winter's Tale*, and Sir Andrew in *Twelfth Night*. Other roles include: Chorus/Musician in *Iphigenia* (Columbia University), Enoch Snow, Jr. in *Carousel* and Joe in *The Almond and The Seaboard* (Madison Repertory Theatre), Richmond in *Richard III*, Rogero/Musician in *The Winter's Tale*, Mark Antony in *Julius Caesar*, and Valere/Composer in *The Amorous Quarrel* (Shakespeare and Company). He received his B.A. as a Theatre Acting Specialist from the University of Wisconsin-Madison and is pursuing his M.F.A. at Columbia University.

VROOMAN MANSION

1869

A BED AND BREAKFAST, HOSPITALITY ESTABLISHMENT

701 East Taylor
Bloomington, IL 61701
877-346-6488 / 309-828-8816
www.vroomanmansion.com

- seven guest suites
- birthdays and anniversaries
- ISU/IWU graduations
- wedding ceremonies & receptions
- corporate rates and meetings



LISA WARTENBERG— Phebe (*As You Like It*), Julia (*Rivals*) — Lisa is thrilled to join the Festival's resident acting company. She is a recent graduate of the University of Houston Professional Actor Training Program receiving an M.F.A. in Acting. Favorite roles include Titania in *A Midsummer Night's Dream* (UH-PATP, dir. Jack Young), Anna in *Boston Marriage* (UH-PATP, dir. Keith Byron Kirk), ensemble in *Urban Death* (Player's Theater, dir. Zombie Joe) and Purrelle Swiffer in *Now This* (a world premiere by OSFs Scott Kaiser, dir. by Sara Becker). www.lisawartenberg.com

CHARLIE WRIGHT— Silvius (*As You Like It*), Roderigo (*Othello*), Antipholus (*Comedy*) — Charlie Wright is so grateful to be a part of Illinois Shakespeare's 2012 season! He is a graduate of Shorter College in Rome, GA, where he received his B.F.A. in acting. He spent the 2010-11 season as an intern with Milwaukee Repertory Theatre and an apprentice with American Players Theatre. He couldn't be happier to spend his first

summer as an actor here! So much thanks to everyone at the Festival, his fantastic family, and always to Bub.

DEB ALLEY — Artistic Director/ Director (*The Rivals*) — In addition to her duties as Artistic Director for the Festival, Deb teaches and is head of the M.F.A. directing program at Illinois State University. She was co-founder and managing director of a professional theatre in Columbus, Ohio; served as the Director of Children's Theatre at Circa '21 Dinner Playhouse; and worked as a production stage manager on three national tours. Deb's long association with the Illinois Shakespeare Festival began in 1995 when she was hired as a stage manager. She worked as a production manager for the Festival for five years before moving into artistic management in 2007. In addition to productions directed at the Festival (*Much Ado*, *Julius Caesar*, *Midsummer*, *The Tempest*, and *The Winter's Tale*), she regularly directs for regional venues. Favorite productions include: *King Lear*, *My Fair Lady*, *Caucasian Chalk Circle*, *Servant of Two Masters*, *The Laramie Project*, *Pippin*, *The Arkansas Bear*, *Skriker*, and *Flyin' West*.

JAMES ALEXANDER BOND — Director (*As You Like It*) — From New York to England and regionally across America, James has directed over 200 productions, including more than one-third of Shakespeare's canon, numerous musicals and many new works. Among his Shakespeare directing credits are *The Merry Wives of Windsor* for the Pearl Theatre Company in New York, *Twelfth Night* for Manhattan Repertory Theatre, *Othello* and *Coriolanus* for the New York Public Libraries, *King Lear*, *Henry V*, *Henry IV parts 1 and 2*, *A Midsummer Night's Dream*, *Measure for Measure*, and *Julius Caesar* for Richmond Shakespeare, *The Taming of the Shrew* and *The Comedy of Errors* for the Virginia Shakespeare Festival, *Romeo and Juliet* for MaineStage Shakespeare, and *Macbeth* for the Hollywood Boulevard Theatre. James will next direct *Godspell*, and *Zelda*, a new musical about Zelda Fitzgerald for the New York Musical Festival, a remount of his SRO production of *The 39 Steps* for OffSquare Theatre in Jackson Hole, WY. James holds a B.F.A. from Ithaca College and an M.F.A. in Directing from the University of California at Davis. He is a member in good standing with the Stage Directors and Choreographers society (SDC), a national theatrical and labor union. To see more, visit his website: NYCdirector.com

JOHN SIPES — Director (*Othello*) — John is currently on the theatre faculty at the University of Tennessee and is a company member of the Clarence Brown Theatre in Knoxville, Tennessee. Before moving to Knoxville, John was a director and the resident movement director for the Oregon Shakespeare Festival for fifteen seasons. John is delighted to return this summer to the Illinois Shakespeare Festival where he was a director and movement director for twelve seasons, and served as the Festival's artistic director for five seasons. Recent directing credits include *Fuddy Meers*, *Woyzeck*, *Oedipus the King*, *Love's Labor's Last*, *All My Sons* (Clarence

Brown Theatre); *Henry VIII, King John* (Oregon Shakespeare Festival); *Julius Caesar* (Shakespeare Santa Cruz); *The Year of Magical Thinking, The Hollow* (Milwaukee Rep); and *my lear* (Usine-C, Montreal).

JAMES WAGONER — Director (*Comedy*) — Growing up with an identical twin gives a special significance to directing *The Comedy of Errors*. Past productions with the Festival include: *The Rustics of Arden* (Playwright) and *The Three Musketeers* (Assistant Director). He received his M.F.A. in Directing from Illinois State where he directed *Rock 'n' Roll, Rhinoceros, Much Ado About Nothing*, and *This is How it Goes*. James studied acting at Carnegie Mellon University and Webster Conservatory. He has a degree in Playwriting from Georgia State. Other directing credits include: *Stalk, Othello, Sweeney Todd, A Raisin in the Sun* and *The Pirates of Penzance*. He currently teaches at Illinois State and Illinois Wesleyan Universities. James and his wife, Erica, live in Normal with their newest cast member—James Phillip, age 15 months.

LORI ADAMS — Director (*Green Shows*) — Lori has been a member of the acting faculty at Illinois State University since 1997 where she serves as Head of Acting. As an actor, Lori continues to tour her one-woman show, *Shame the Devil! An Audience with Fanny Kemble* by Anne Ludlum about nineteenth-century actress, abolitionist and writer, Fanny Kemble, throughout the United States and in Canada. Her production of *Falling* (which she directed at Mustard Seed Theatre) will be re-mounted off-Broadway this fall.

CHRISTOPHER DEA — Assistant Director (*Othello*) — Christopher is an M.F.A. candidate in directing at Illinois State University. He is excited to serve as Assistant Director to John Sipes for *Othello* as well as being the Director of Operations for the Festival. Directing credits include: *The Zoo Story, Speech and Debate, The Marriage of Bette and Boo, One for the Road, The Dumbwaiter, and Julius Caesar*. Thank you to Deb, Dick, and John for the opportunities.

JEREMY GARRETT — Assistant Director (*As You Like It*) — Originally from near Harrisburg, PA Jeremy is an M.F.A. candidate in directing at Illinois State. He has worked with the Festival Educational Outreach for the past two years, and is very excited to return in his role as Camp Director for the Shakespeare Alive! summer camps, as well as in his new role as Assistant Director to James Alexander Bond for *As You Like It*. Directing credits include: *Life Under Water, Picasso at the Lapin Agile, The Merchant of Venice, and Cloud 9* at Illinois State; and *Richard III* as Associate Artistic Director at the Harrisburg Shakespeare Company.

DOROTHY MARSHALL ENGLIS — Costume Designer (*The Rivals*) — Dorothy is pleased to return to the Illinois Shakespeare Festival, where she previously designed costumes for *A Midsummer Night's Dream, Othello, The Merchant of Venice, Henry VIII, Henry V, Titus Andronicus*, and *Richard III*. A member of United

Think. Feel. Live.

HEARTLAND THEATRE COMPANY

25 Years of Theatre that Matters

NEW PLAYS FROM THE HEARTLAND

3 WINNING ONE-ACT PLAYS:
SUMMER IN THE HEARTLAND®
JULY 12-14 2012

THESE SHINING LIVES

DIRECTED BY DON LACASSE
SEPTEMBER 2012

RED

DIRECTED BY CHRIS CONNELLY
NOVEMBER 2012

TIME STANDS STILL

DIRECTED BY SANDRA ZIELINSKI
FEBRUARY/MARCH 2013

MIDDLETOWN

DIRECTED BY JOHN W. KIRK
APRIL/MAY 2013

Annual 10-Minute Play Festival

"THE KEY"
JUNE 2013

www.heartlandtheatre.org
309 452 8709

Scenic Artists, Dottie is also Chair of the Conservatory of Theatre Arts at Webster University. Long associated with the Repertory Theatre of St. Louis, her designs there include *Amadeus* (Kevin Kline winner), *Macbeth, Saint Joan, Kiss Me Kate, Taming of the Shrew, The Three Musketeers*, and *The Life of Galileo*. For STAGES, St. Louis, her designs include *My Fair Lady, High Society, Carousel, Camelot, A Little Night Music* (Kevin Kline winner), and *The Secret Garden* (Kevin Kline winner).

MAX KREMBES — Sound Designer (*The Rivals*), Asst. Sound Designer (*As You Like It/Othello*) — Max graduated from the University of Virginia in May, where he studied sound design and engineering and worked on many different productions in many different capacities. His favorite projects include an original work at the University of Virginia about the fall of Troy inspired by Homer's *Iliad*, and a revival of *Hello Again* with the Transport Group in New York City. After the Festival, he plans to return to his home in Alexandria, VA and seek other sound-related opportunities.

RACHEL LARITZ — Costume Designer (*As You Like It*) — Rachel is happy to be joining the Festival for the third time after designing costumes for *Winter's Tale* and *The Merry Wives of Windsor*. Other design credits include: Pearl Theatre, Actors Theatre Louisville, Milwaukee Repertory Theatre, Northlight Theatre, Remy Bumppo, Peninsula Players, Court Theatre, Timeline, Children's Theatre Madison, Next Act, Chamber Theatre, Renaissance Theaterworks, Skylight Music Theatre, Route 66, Utah Shakespeare, and the University of Michigan. Other professional credits include: NBC's *Law & Order*, American Players Theatre, Chicago Opera Theatre, Garsington Opera (London, England), and the Spoleto Festival USA. Rachel is a recent recipient of a 2011 Emerging Artist Alumna Award from the University of Michigan and a 2009 Joseph Jefferson Award for *Voysey Inheritance*.

JULIE MACK — Festival Lighting Designer — This is Julie's eighth season with the Illinois Shakespeare Festival, most recently designing the 2010 season featuring *The Tempest*, *The Merry Wives of Windsor*, and *The Three Musketeers*. Julie's lighting designs have been seen at Victory Gardens Theatre, A Red Orchid Theatre, the Mustard Seed Theatre, Drury Lane Oakbrook Terrace, Noble Fool Theatricals, Skylight Opera Theatre, Famous Door Theatre, the Chicago College for the Performing Arts, and the Colorado Shakespeare Festival. Julie is also a co-founder of the Fairbanks Shakespeare Theatre in Fairbanks, Alaska.

GREG MERRIMAN — Dance Choreographer (*As You Like It/Othello*) — Gregory Taylor Merriman is a graduate of Texas Christian University with a Bachelor of Fine Arts degree in Classical Ballet performance. Of the many he has studied with, Fernando Shaffenburg, Claire Duncan, Clara Cravey, Bill Martin-Viscount and Maria Grandy have been the most influential. Gregory began his early dancing career with the Houston Allegro Ballet under the direction of Emma Mae Horn and Glenda Brown. Offered the Brown and Nordan Scholarships at TCU, Gregory joined the Fort Worth Ballet, dancing many of the classics as a frequent partner to Karen Shaffenburg. He was also a principle dancer with the Fort Worth Opera Ballet and danced with the Joffrey II Company. Greg has taught at Illinois Wesleyan University and teaches annually on faculty at the Tennessee Governor's School for the Arts. Greg is currently on the dance faculty at Illinois State University.

ALEX MILLER — Fight Director/Choreographer (*As You Like It*) — Mr. Miller is humbled to have the opportunity to work at the Illinois Shakespeare Festival. As an Assistant Professor at Millikin University, Alex teaches all levels of Acting and Stage Combat. In addition to his university duties, he provides theatrical opportunities for offenders at the Decatur Correctional Center. This year the Bard Behind Bars program presented its inaugural production — *Othello*. Directing and Fight Direction credits include *Macbeth*, *Romeo and Juliet*, and *Midsummer Night's Dream*. Performance credits include *Henry V*, *The Merchant of Venice*, and *The Tempest*. Heartfelt gratitude goes to Deb Alley for the

opportunity, Raymond and Debbie Miller for the lessons of life, and Angie, Aidan, and Miranda for making his life a dream come true.

MICHAEL RASBURY — Sound Designer (*As You Like It/Othello*) — Folger Theatre: *Henry VIII*; The Transport Group (Off-Broadway): *Hello Again*, *Being Audrey*, *Bury The Dead*, *Marcy in the Galaxy*, *Crossing Brooklyn*, *Dark at the Top of the Stairs*; The John Cage Trust: *An Alphabet*; The Public: *One Flea Spare*; Actors Theatre of Louisville: *One Flea Spare*, *Dinner With Friends*, *Like Totally Weird*, *Greater Tuna*, *Nonsense*, *Strange Encounters*; Lake Tahoe Shakespeare Festival: *Macbeth*, *Romeo and Juliet*, *Twelfth Night*, *Othello*, *Comedy of Errors*; Foothill Theatre Company: *The Story of Opal*; Artist Fellowship Grant: Recognized as the Louisiana State Funded Theatre Artist in 2003.

KEVIN RICH — Festival Voice/Text Coach — Kevin's previous acting experience with the Illinois Shakespeare Festival includes Richard in *Richard III*, Puck in *A Midsummer Night's Dream*, Gendarme in *Scapin*, Porthos in *The Three Musketeers*, Sebastian in *The Tempest*, and Host in *Merry Wives of Windsor*. Kevin is an Assistant Professor of Acting at Illinois State University, an Associate Teacher of Fitzmaurice Voicework, and a member of Actor's Equity and SAG-AFTRA.

JUDITH RIVERA-RAMIREZ — Costume Designer (*Comedy*) — Judith is excited to return to the Festival as the Costume Designer for *Comedy of Errors* after assistant designing costumes for *The Three Musketeers* for the Festival in 2010. Most recently, Judith designed costumes for the Illinois State University production of the opera *La Boheme*.

HELENE SIEBRITS — Costume Designer (*Othello*) — Originally from South Africa, Helene has been a professional costume designer and draper for twenty-eight years. She received her M.F.A. in Design from the University of California, Los Angeles. Helene worked at the Los Angeles Latino Theatre Company, South Coast Repertory Theatre, American Musical Theatre Company in San Jose, the California Shakespeare Festival in Berkeley, Shakespeare Santa Cruz, West Virginia Public Theatre, Festival Antigonish in Nova Scotia, Santa Fe Opera and the Metropolitan Opera of New York. Helene has also worked on independent films in Los Angeles with Eli Kaufman Films and the American Film Institute. Helene has worked internationally with opera director Peter Sellars on *Oedipus Rex* and the *Symphony of Psalms* in both Los Angeles and the Sydney Opera in Australia. Her latest collaboration with Peter Sellars includes *Jolanta y Persephone* at the Teatro Real in Madrid, Spain. Helene currently holds the position of Chair of Costume Design in the Department of Theatre at the University of Illinois, Urbana-Champaign.

JOHN STARK — Festival Scenic Designer — John is happy to return for his 16th season and 26th scenic design for the festival. He began his association in 1993 with *Pericles* and his last designs were *Scapin*, *Richard*

III and *A Midsummer's Night Dream* in 2009. Chicago design credits have been with A Red Orchid Theatre, Victory Gardens, Seanachai Theatre Co., Noble Fool Theatricals, The Next Theatre, Drury Lane Oakbrook and Famous Door Theatre. Most recently he designed the premiere of *Falling* for the Mustard Seed Theatre and *Way to Heaven* at the New Jewish Theatre in St. Louis. He received the Joseph Jefferson award for Scenic Design for Famous Door's 1997 production of *The Living*. John joined the faculty of the Illinois State University School of Theatre in 1991.

CHRIS WYCH — Scenic Designer (*Comedy*), Asst. Festival Scenic Designer — Chris is thrilled to be returning to the Festival for his eighth year, having held such positions as carpenter, master carpenter, props master and assistant scenic designer. He continues his work as the Properties Supervisor for Northwestern University and Scenic Designer for Magical Starlight Theatre. Some of Chris's scenic designs include *Seussical The Musical* (Indiana University), *The Wizard of Oz* (Magical Starlight Theatre), *The Woman in Black* (Brown County Playhouse) and *A Midsummer Night's Dream* (Shakespeare Alive!/Illinois Shakespeare Festival). He has always enjoyed working with a great company and friends. Chris would like to thank everyone for their support and teamwork, you know who you are.

SARA BUBENIK^{AE} — Production Stage Manager/ Stage Manager (*Othello*) — Sara is very excited to be joining Illinois Shakespeare Festival as the Production Stage Manager. Currently, Sara is on faculty at Millikin University. Prior to arriving in Decatur, Sara was the production and facilities manager for Imagination Stage, a theatre for young audiences in Bethesda, Maryland. Previously, she was Production Stage Manager for STAGES St. Louis where some of her favorite productions were *Cabaret* starring David Elder and *A Little Night Music* with Corinne Melancon. She has also stage managed for Great Lakes Theater Festival, Repertory Theatre of St. Louis, National Theatre of the Deaf, Cleveland Signstage, Porthouse Theatre, Cleveland Public Theatre, and Milwaukee Shakespeare. A member of Actors' Equity Association since 2001, Sara received her M.F.A. from the University of Wisconsin-Milwaukee.

JAYSON T. WADDELL[†] — Stage Manager (*As You Like It*) — Jayson is pleased to be spending another season with the Illinois Shakespeare Festival. Stage Management credits: *Twelfth Night* (Illinois Shakespeare Festival), Assistant Stage Management credits: *Ghost Brothers of Darkland County*, *A Christmas Carol*, *Broke*, *Fairytale Lives of Russian Girls*, *Carapace* (Alliance Theatre, GA) and *The Winter's Tale* (Illinois Shakespeare). Jayson hopes everyone enjoys *As You Like It!* Jayson would like to thank James and his wonderful assistants for their hard work and dedication to this project. Enjoy the show.

DANIEL D. DRAKE[†] — Stage Manager (*The Rivals*), Associate Company Manager — Daniel is excited to return for his 2nd season with the Illinois Shakespeare Festival as the stage manager for *The Rivals* and associate company manager. Previous professional credits include *The Iceman Cometh*, *RED* and *A Christmas Carol* at the Goodman Theatre (Stage Mgmt Intern), *Mr. Rickey Calls a Meeting* at Lookingglass Theatre (Stage Mgmt Apprentice) and *The Complete Works of William Shakespeare Abridged* (ASM) with the Festival. Previous educational credits include *Two Gentlemen of Verona*, *Les Liaisons Dangereuses*, *25th Annual Putnam County Spelling Bee* and *Don Juan Comes Back from the War* at Illinois State University.

HANNA SUPANICH-WINTER — Stage Manager (*Comedy*) — Hanna recently graduated from Illinois State University with a B.S. and cannot wait to plunge into the real world of theatre! This is her second summer with the Festival, having worked as an intern last summer. Hanna has spent the last two years as stage manager and scene painter at Illinois State University. Before coming to Illinois State, she completed two years of various theatrical work at the College of Lake County, graduating with her AA. The upcoming year will hopefully include working with Cirque du Soleil, but simply getting paid for doing theatre would be lovely, too. She wishes everyone a glorious summer full of Shakespeare!

DICK FOLSE — Managing Director — Dick Folse is the Managing Director for the Illinois Shakespeare Festival and has spent ten years facilitating educational outreach for Illinois State University. As a life-long friend of the theatre, he is pleased to be part of the Illinois Shakespeare Festival organization.

The Illinois Shakespeare Festival is a proud member of:

- Shakespeare Theatre Association of America
- The Institute of Outdoor Drama
- University/Resident Theatre Assn. (U/RTA)
- National Assn. of Schools of Theatre (NAST)
- Actors' Equity Association



Actors' Equity Association was founded in 1913 to protect Actors from the severe mistreatment that permeated the industry at that time. The 35,000 member Association consists of distinguished stars and other professional Actors and Stage Managers who work nationwide, from New York's Broadway to Los Angeles, from Minneapolis to Miami Beach, in regional, small professional, stock and dinner theatre, and in theatres for young audiences which build the audience of tomorrow. These Actors and Stage Managers are committed to working in the theatre as a profession, not an avocation, and bring to you the finest

professional training and experience. By presenting Equity productions, this theatre offers to you, our audience, the best entertainment presented by the finest quality Actors and Stage Managers that your admission dollars can buy.

DAN BROWDER — Production Manager — Dan Browder is pleased to return to the Illinois Shakespeare Festival as Production Manager after a twelve-year absence. He served as Technical Director for the Festival from 1988-1998. Dan is a full professor and is the Technical Director for the School of Theatre and Dance at Illinois State University. He holds an M.F.A. in Theatre Technology from Indiana University, and a B.S. in Theatre from Portland State University. In addition to acting as Technical Director for over 150 productions, Dan has designed scenery, lights or sound for more than 50 productions for a number of different theatres and video productions. Besides working for the Festival and University, Dan does freelance work in theatre consulting, scenic and special effects design and fabrication and rigging installation.

JANET WILSON — Producer — Janet Wilson is the Producer of the Illinois Shakespeare Festival and Director of the School of Theatre and Dance at Illinois State University. She was a Founding member, Co-Artistic Director and Director of Education for the Firehouse Theatre Project, a professional theatre in Richmond, where she produced and directed numerous productions. Committed to social justice issues, Janet has spearheaded residencies at Illinois State for social activist Yvonne Bezerra de Mello, Holly Hughes and Curt L. Tofeland and has worked with the "Acting Out" Theatre Troupe at Lincoln Correctional. She began her career as a professional actor (AEA, SAG and AFTRA) and spent over a decade acting professionally in New York City. She also is the producer/director of *Shame the Devil! An Audience with Fanny Kemble*, an Illinois State University faculty production featuring Lori Adams that has toured nationally.

Festival Personnel

Executive Staff

DEB ALLEY — Artistic Director
DICK FOLSE — Managing Director
DAN BROWDER — Production Manager
JANET WILSON — Producer

Design Staff

SARAH E. MIKRUT — Assistant Lighting Designer
JANELL CLINGENPEEL — Assistant Costume Designer
(As You Like It)
NATALIE LOVELAND — Assistant Costume Designer
(Othello)
JUDITH RIVERA-RAMIREZ — Assistant Costume Designer
(The Rivals)
CHRIS WYCH — Assistant Festival Scenic Designer

Scene Shop/Electrics Crews

DAVID NAVALINSKY — Technical Director
DAVE GEORGE — Shop Foreman/ Assistant Technical Director
ERIC MOSLOW — Ewing Shop Supervisor/ Stage Operator Supervisor
CHRIS WEST — Lead Carpenter-Welder/ Stage Operator
TOM EGAN — Lead Carpenter-Welder/ Assistant Stage Operations Manager
HENRY MATTHIESSEN — Carpenter/ Stage Operator
ALEX ODOM — Carpenter/ Stage Operator
VINCENT LOBELLO — Carpenter
RYAN MILOSEVICH — Carpenter
MATT BOEHM — Carpenter Intern/ Stage Operator
KATE ST. JOHN — Carpenter Intern/ Stage Operator
CHRIS BEINEMAN — Prop Master
ALICIA BAILEY — Assistant Prop Master/ Props Master
(Rivals)
LAUREN COGHLAN — Prop Artisan/ Stage Operator
COURTNEY GOMEZ ODOM — Prop Artisan/ Stage Operator
BETH MILLER — Props Artisan Intern/ Stage Operator
ANDREA BALL — Scenic Charge Artist
JULIE PAGE DiBIASE — Scenic Artist
JOSH O. SAMANIEGO — Scenic Artist/ Stage Operator
AMBER SUBELKA — Scenic Artist/ Stage Operator
SARAH E. MIKRUT — Master Electrician
ALEX SCHMAUS — Asst. Master Electrician/ Sound Engineer/ Sound Board Operator
MERETHE GRACE MABERG — Electrician/ Light Board Operator
BRANDON H. ROSEN — Electrics/ Run Crew Intern

Costume Crew

MARK SPAIN — Costume Director
CHRISTINE DUNCAN — Craft Supervisor
CHARLES PEDEN — Cutter/ Draper/ First Hand
ALEXANDRA GOULD — Cutter/ Draper
CARRIE JO LAWRENCE — Cutter/ Draper
JENNIFER BOEHM — First Hand
KELLY MCBANE — First Hand
YAO CHEN — Costume Technician/ Craft Technician

DEANNA DURBIN — Costume Technician
KRISTIN GRIENEISEN — Costume Technician
JAMIE JONES — Costume Technician
JENNIFER OZIEMKOWSKI — Costume Technician/
 Wardrobe
BRITTANY POWERS — Costume Technician/
 Supervisor
RACHEL M. RATHE — Costume Technician
MEGHANN TIMNEY — Costume Technician
MELISSA WILSON — Craft Technician
RAQUEL WOODS — Costume Technician
CORINNE ZACHRY — Costume Technician/
 Wardrobe
JEANNETTE PHILHOWER — Costume Technician Intern/
 Wardrobe
LILY WALLS — Costume Technician Intern/
 Wardrobe

Stage Management Assistants

CASEY L. PEEK — Assistant Stage Manager
HANNA SUPANICH-WINTER — Assistant Stage Manager
MEGAN CHANEY — Production Assistant/
 Stage Management Intern
MARIEL HILDENBRAND — Assistant Stage Manager
MATTHEW BLACK — Production Assistant/
 Stage Management Intern
CATHERINE NORRIS — Production Assistant/
 Stage Management Intern

Management Staff

YVETTE HIDDLESTON — Business Manager
RACHEL K. STRACK — Company Manager
CHRISTOPHER DEA — Director of Operations
BRANDON BURLING — Ticket Office Manager
TORI ALLEN — Ticket Office Agent
KYLE MCCLEVEY — Ticket Office Agent
NICHOLAS PUDDICOMBE — Ticket Office Agent
TYLER SUTTON — Ticket Office Agent
DEVON RAE HARTWIG — Education/
 Front of House Staff
ASHLYN HUGHES — Education/
 Front of House Staff
CARLOS L. KMET — Education/
 Front of House Staff
JASON RAYMER — Education/
 Front of House Staff
JESSIE SWIECH — Education/
 Front of House Staff
TAYLOR WISHAM — Education/
 Front of House Staff
ARIF YAMPOLSKY — Education/
 Front of House Staff
MARY TACKETT — Front of House Staff
CYNDEE BROWN — Intern Coordinator
MICHAEL VETERE — Puppet Coordinator and
 Outreach Educator
LAUREN LOWELL — Special Projects Costumer/
 Costume Tour Guide
LORI ADAMS — Greenshow Director
HEIDI HARRIS — Outreach Facilitator
CRISTEN SUSONG — Outreach Facilitator
PETE GUITHER — Program Guide



THE JOHN STEVENS EQUITY ACTOR

The John Stevens Equity Actor is funded through the John Stevens Memorial Golf Outing. Sponsored by Nancy Stevens and the Illinois Shakespeare Festival, this annual event is held in the spring and honors the memory of John Stevens, a past President of the Illinois Shakespeare Society and long-time Festival supporter.

The John Stevens Equity Actors: David Sittler (2012), Gerson Dacanay (2011)

Kevin Rich (2010); Michelle Shupe (2009); Daniel Harry (2008); Eddie Collins (2007); Thomas Anthony Quinn (2006)

Information on funding an Equity Actor can be obtained by calling the Festival at 309-438-8783.

THE CROSSROADS PROJECT ARTIST

The Crossroads Project is a multicultural theatre program within the School of Theatre at Illinois State University. Crossroads encourages and explores performances that address the issues and experiences of ethnic minorities in the United States and the experiences of international cultures, including Asia, the Middle East, Africa, Latin America, and indigenous peoples of the world. Crossroads also creates an important bridge between the university and the community.

The Crossroads Project Artists:

Daver Morrison (2012), Bridget Hardy (2011), Demetria Thomas (2010) Wayne T. Carr (2009); Aaron H. Moss (2008)

Shakespeare Donor Roll — June 1, 2011 - May 31, 2012

Season Sponsors (\$20,000+)

The Snyder Companies
State Farm Foundation

Producer (\$5,000+)

Country Companies

Director (\$1,000+)

John and Sharon Amdall
Jerry Antonini
Gordon and Sandra Bidner
Anita Carney
Commerce Bank, NA (Missouri)
James and Sue Edmondson
Christine and Lawrence Eggan
Robert and Linda Goodall
Paul and Sandra Harmon
Gary Hoover
Annette and Ruben Martinez
Phares and Harriet O'Daffer
Sally and James* Pancrazio
Carole and Jerry Ringer
Susan Silvey
Ron and Anne Spiotta
Nancy Stevens
Craig Sutter
Ruel and Judy Wright

Star (\$500+)

Deb Alley and Beth Campbell
Deborah Smith
Ann Durand
Judie Bey
Richard and Victoria Folse
Paul and Carolyn Jarvis
James and Amy Major
Gigi and Frank Miles
Clyde and Sharon Reynolds
James and Jeanne Swanson
Janet and Glenn Wilson

Player (\$250+)

Ann Turner Declaration of Trust
Brad Brennenman and Shelley Carter
Eric Bugaieski
Gary Campello
John Capasso
Dianne L. and Thomas E. Clemens
Kathi Davis
Tim and Wendy Duffy

Cheryl and George Elzy
John and Susan Freed
Peter and Karen Geddes
Myra and George Gordon
James Graff
Ann Haugo and Steve Pelphey
James Heiple
Eric and Theresa Hoss
John T. Phipps Law Office
Belinda Jones
John and Margaret Kirk
Gary and Kay Koppenhaver
Donald and Judith LaCasse
Paula Pomeranke
John and Susan Ramsey
Gerard and Elizabeth Rickert
Mark and Jennifer Ritchason
Margaret and Russell Rutter
Judy Swiger
Masako Takayasu
Sharon and John Tarvin
James and Lynn Tatman
The Music Shoppe Inc.
Ann Turner
James Turner
Karen Zook

Friend (\$50+)

Anonymous
Karen Ament
Christopher Anderson
Ronald Baas and Mary Ernst Bass
David and Janet Baker
Charles Batchelor
Gary and Jean Baumhardt
Allan and Lois Bell
Wallace and Karen Bergmann
Bloomington-Normal Jr Women's Club
IFOWC
Richard and Penny Boser
Judith Boyer
Marjorie Bradley Scholl and Donald Bradley
Nicole Bruno
Mark and Wendy Campana
Gwinn and Paul Campbell
Scott Carnes
Robert and Margaret Castle
Phillip Chastain
Kendall Childs
Chad and Lisa Clover
Laura and David Coe
E. Paula Crowley and Daniel Deneen
John and Jana Edmondson
Nancy and John Eller
Theodore and Lisa Ewing
Linda Foutch
Curtis Fox
Timothy and Tonya Fredstrom

Jean and Kenneth Freeburn
John and Marilyn Freese
Ann and Mark Frels
Patrick Frendreis and Lisa Tekmetarovic
Mabel Gast
General Federation of Women's Club Illinois
Bloomington-Normal Jr. Womens Club
Kathy Gentry
Patricia Grogg
Thomas Grogg
Sandra and Fred Groves
Peter Guither
Kay and H. Wayne Hammer
Michelle Harris
Victoria and Charles Harris
Jonathan and Marianna Hasse
Barbara and Robert Hathway
Jeffrey and Leslie Hecht
Dennis and Kay Henrichs
Rebecca Hepner
Gayle and Andrew Hess
Stephen and Susan Holfield
Christopher Honan
Yvette Huddleston
John and Roxanne Huxford
Bryant Jackson
Sally and Thomas Jacob
William and Sarah Jenkins
Kenneth and Sandra Jesse
Chad Kahl and Stephanie Davis-Kahl
Alexis and Michael Kalish
Usha and Suraj Kapoor
Kathleen Karl
Susan Kelsch
Jeanne Koring Wroan and John Wroan
Christine and Matthew Kubiak
Lynda Lane
Joann Lansbarkis
Wendy and Alan Lanser
Anthony and Susan Liberta
Debbie and Terry Lindberg
Cathy and John Lust
Margaret Ann Williams Revocable Living
Trust
Edward and Patricia Matesevac
Robert and Heather Mather
Darrell and Priscilla Matthews
Paul and Julie Meints
Joan and Arthur Milward
Stephen and Kimberly Mitchell
John Morrissey
Telia Murphy
Norma Nelson
Terri O'Brien
Susan and Thomas Ocheltree
Michele Petri
Janet and Robert Pioli
John Poole
Calvin Pritner and Evamarie Johnson
Sharon Prokuski
Paul and Gretchen Quehl
Christopher Quinn

Amy Ragland
 Johanna Rayman
 James and Pamela Raymond
 Clarence Richardson
 Barbara Rieder
 Edward and Sarah Riehl
 Jan Rogge
 Pamela and John Rosa
 Robert and Amanda Sanders
 Dianne Sattinger
 Charles Schweighauser
 Charles A. Schweighauser Trust
 Sam Scoma
 William Semlak and Joani Moore
 Deborah Shaw
 Bill and Mary Shepherd
 Brian Sherman and Melissa Field
 Sherman
 Roberta Smith
 Roland Spies
 Robert and Karen Starckovich
 Dennis and Linda Steele
 C. Louis and Joan Steinburg
 Ron and Shirley Streib
 Paul Swiech and Kay Shipman-
 Swiech
 Timothy Tyler
 Tammy VanEgtern
 Ann Vogel
 Marilyn and David Walach
 John and Melinda Walker
 Janice Walter
 Marolyn Weber
 Robert and Karla Weldon
 Joseph and Lori Wemlinger
 Peg and William Wetzel
 Peter Whitmer
 Wendy and Kenneth Wilber
 Margaret Williams
 Joseph Yoches
 Charles and Gwendolyn Yuriec
 James Zaleschuk and Susan
 Hillabold

The Illinois Shakespeare Society

Founded in 1982 by persons interested in enhancing the Illinois Shakespeare Festival, the Society is a membership organization made up of individuals and businesses who see the Festival as an important cultural resource for Bloomington-Normal, McLean County and all of Central Illinois. The Society has developed an active membership which has been essential to the Shakespeare Festival's continued growth and increasing artistic quality. For more information on how to join the Shakespeare Society and enjoy its benefits, please call Dick Folsie at 309-438-8697 or you can email him at rfolse@ilstu.edu.

Illinois Shakespeare Society Board of Directors: Jerry Ringer (President), Sue Silvey (President-elect), Nancy Stevens (Secretary), Judie Bey, Anita Carney, Kathi Davis, Ann Durand, Larry Eggan, Dave Fedor, Jonathan Green, Paul Harmon, Colleen Kannaday, Sue Lakin, Annette Martinez, John Phipps, Deb Smith, James Swanson, Judy Wright, Karen Zook

Illinois State University Foundation

The Illinois State University Foundation is a not-for-profit corporation chartered by the State of Illinois for the sole purpose of serving the University. The Foundation is authorized to hold funds in trust, invest such funds and use the return of the investments or the capital for the support of scholarships, faculty research and other educational and related activities. It is through the Illinois State University Foundation that the Festival has been allowed to utilize picturesque Ewing Manor as its theatre site.

In honor of the 35th Anniversary of the Illinois Shakespeare Festival, the Festival would like to recognize donors who have contributed \$5,000 or more total during the life of the Festival.

Bruce V. Green Trust	Hilfinger Asbury Abels & Assocs
State Farm Companies Foundation	Bridgestone/Firestone Off Road Tire Company
The Snyder Companies	GTE Foundation
Phares and Harriet O'Daffer	Carol and Gerry Chrisman
Carole and Jerry Ringer	Carson and Iris Varner
Town of Normal	Jake and Deborah Traskell
Calvin Pritner and Evamaril Johnson	Gary Hoover
Margaret Bansau Charitable Trust	James and Jeanne Swanson
John and Sharon Amdall	Owen Foundation
Paul and Sandra Harmon	Frances Owen
Craig Sutter	Earl and Carol Reitan
Nancy Stevens	GTE Information Services Inc
James and Sue Edmondson	William and Janella Cooley
Caterpillar Foundation	Kay Fransen
Alvin and Elaine Goldfarb	Clyde and Sharon Reynolds
The Pantagraph	Maxine Bolen
COUNTRY Financial	John and Laura Dirks
Christine and Lawrence Eggan	Davis and Sharon Merwin
Judie Bey	Bernhard and Nancy Works
Dixie Mills	Burr House
First Edition	NICOR Inc.
Target	Paul A. Funk Foundation
Gigi and Frank Miles	Donna Willett
Paul and Sharon Baker	Stephen and Anne Matter
Mitsubishi North American Inc.	Michael and C. Dianne Bielfeldt
Susan Silvey	Roger and Stephany Joslin
Darrell and Priscilla Matthews	Joan Tick
Patricia Grogg	John and Stacie Killian
Judy Markowitz	Jerry Antonini
Barbara Meek	Bridgestone/Firestone Trust Fund
Tim and Wendy Duffy	CC Services Inc
Sally Pancrazio	Country Life Insurance Co
Ann Durand	Country Mutual Insurance Co
Kathleen Bassi	Fredrick Kaufman
William Grogg	Monica and Kirk Noraian
Ruel and Judy Wright	William and Nancy Yarger
Janet and Herbert Wiser	



*Commerce Bank
is a proud sponsor
of the Illinois
Shakespeare
Festival*



**Commerce
Bank**
Member FDIC

commercebank.com

**"Glenn Wilson & Friends" Jazz
Series & Live Music Nights**

Fridays and Saturdays (6:30-7:30 p.m. - Free!), world-renowned saxophonist and Normal resident Glenn Wilson is producing and performing a series of jazz concerts prior to the night's stage performance. The weekend concerts feature Wilson's jazz musician 'Friends' from New York, Chicago, Miami and Indianapolis. Also appearing will be Wilson's local group "The Jazzmaniacs" plus other local jazz musicians.

Enjoy Live Music on Thursdays: listen to a selection of mixed contemporary and pop acoustic sets, baroque and opera, as well as bagpipes performed live by visiting artists.

**Post-Show Talk-backs &
Ice Cream Socials**

Stay after the performance on select Tuesdays and talk with the cast and the Artistic Director about the night's production. Then after the Q & A, join the cast and crew in the courtyard for an old-fashioned ice cream social! It's a great way to meet the company one-on-one and get the inside "scoop" on their lives at the Festival. The social is sponsored by long-time supporter, Craig Sutter, and is FREE to all! Join us on July 24 after *The Rivals*, July 31 after *Othello*, and August 7 after *As You Like It*.



Craig Sutter with several of his friends from
The Complete Works of Shakespeare



SUBSCRIBE TODAY!

Have *Midwestern Family* delivered to your door...ONE YEAR for just **\$14.99!**

Midwestern Family Magazine
PO Box 9302 • Peoria, IL 61612
www.midwesternfamily.com

Corporate Spotlight



Dave Fedor, Chief Financial Officer and Owner, The Snyder Companies

The Snyder Companies is proud to continue our long-standing support of the Illinois Shakespeare Festival and serve as the title sponsor for the 5th consecutive year. Our in-kind donation of over \$100,000 each year, along with our partnership, has helped to continue to bring this talented group of actors and artists to Central Illinois. We look forward to another wonderful season!

SNYDER

THE SNYDER COMPANIES

APARTMENTS | HOTELS | INSURANCE | REAL ESTATE



Annette R. Martinez, CLU, ChFC, CPCU, Vice President of Operations, Human Resources, State Farm Insurance Companies

State Farm® is connected to the neighborhoods where we live and work. We team-up with organizations that share our vision and commitment to building safer, stronger, and better educated communities.”

 **State Farm™**



Bob Lakin, President, Commerce Bank — Illinois

Commerce Bank is pleased to continue its partnership with the Illinois Shakespeare Festival – another community institution with a commitment to excellence and a dedication to enhancing the quality of life in the region. We invest to foster the arts and make our community a vibrant place to live.

 **Commerce Bank**



Illinois State University

President Al Bowman

Provost Sheri Noren Everts, Vice President for Academic Affairs

Daniel T. Layzell, Vice President for Finance & Planning

Larry Dietz, Vice President for Student Affairs

Erin Minné, Vice President for University Advancement

IllinoisState.edu



College of Fine Arts

James Major, Dean, College of Fine Arts

John Walker, Executive Associate Dean / Director, Arts Technology Program

Shari Zeck, Associate Dean / Director, Office of Research in Arts Technology

Pete Guither, Assistant Dean

Laurie Merriman, Assistant Dean

Janet Tulley, Assistant Dean

Brian Gawor, Director of Development

Tony Crowley, Director, School of Art

Steve Parsons, Director, School of Music

Janet Wilson, Director, School of Theatre

Barry Blinderman, Director, University Galleries

Brandon Burling, Ticket Office Manager, Center for the Performing Arts

College of Fine Arts Staff:

Colleen Longo, Nathan Rudge

School of Theatre and Dance Staff:

Amy Coon, Valerie Dambold, Yvette Huddleston

FineArts.IllinoisState.edu

Special Thanks

The University Advancement Staff

Grounds & Facilities Management Staff

Toni Tucker, Director, Ewing Cultural Center and Genevieve Green Gardens

Ranella Wills, Ewing Cultural Center Customer Service Assistant

Craig Sutter for his support of the Ice Cream Socials

Timothy Talen

Flynn's Tree Service, Bloomington, IL

Gladys Mercier and Starnet Printing

Barbara



Construction of the first theatre and a performance of *Twelfth Night* in 1978.

Festival Policies

- The taking of pictures or making recordings of any kind are not allowed in the theatre.
- Glass bottles, coolers, and picnic baskets are not allowed in the theatre. Drinks not in glass containers are allowed, as well as snack items.
- Patrons must refrain from walking on the stage.
- Latecomers will not be seated until a suitable break in the play's action at the discretion of the House Manager and only in seats chosen by the House Manager.
- Please silence cell phones and other electronic devices. If you need to be reached for an emergency, the House Manager will assist you.
- For emergency contact, baby-sitters call 309/828-9814. Please make sure the baby-sitter knows your seat location.
- Smoking is not allowed anywhere on the Ewing Cultural Center grounds.
- For your own safety, be sure to cross the street **only** at the corner crosswalk at the light. Please do not walk over to Sunset Road to cross after the performance.

It's Outdoor Theatre! (Rain Policy)

The Festival performs through light showers. Should any outdoor performance be rained out before the first intermission, patrons may exchange their tickets for another performance within two business days. If a performance is stopped after the first intermission, the evening will be considered complete and no ticket exchanges will be possible.

Contacting the Festival

Illinois Shakespeare Festival • Campus Box 5700

Normal, IL 61790-5700 • www.thefestival.org

Box Office	309/438-2535
Ewing Box Office	309/828-9814
Group Sales	309/438-3586
Management Office	309/438-8785
Fax	309/438-5806
Costume Donations	309/438-5150
Shakespeare Society	309/438-8974
email	shake@ilstu.edu

Box Office

Center for the Performing Arts Box Office

(corner of School & Beaufort Streets in Normal)

Campus Box 5700 • Normal, IL 61790-5700

Open 11:00-4:00 Mon-Sat

Ewing Box Office (Ewing Courtyard)

Open 5:00 pm through intermission



“ALL THE WORLD’S A STAGE”

ENJOY AN EVENING WITH SHAKESPEARE



CONCERTS on the Quad

July 2, 9, 16, 23, 30

On the Illinois State University Quad
7 pm — Free!

FOA

FRIENDS OF THE ARTS
ILLINOIS STATE UNIVERSITY

Join **Friends of the Arts** and help provide essential scholarships for generations of artists to come, while being part of an active artistic and social community.
Call 309-438-8322 or foa@ilstu.edu

THE COLLEGE OF FINE ARTS
at Illinois State University

STATE
your dream.

FineArts.IllinoisState.edu

Great Performances all year long!

Anon(ymous) by Naomi Iizuka. Sept. 28-Oct. 6

Glory of Living by Rebecca Gilman. Oct. 10 - 13

Mother Courage and her Children by Bertolt Brecht. Oct. 18-27

Cherry Orchard by Anton Chekhov. Nov. 1-10

Noises Off by Michael Frayn. Nov. 2-10

Illinois State Dance Theatre Fall Concert. Dec. 6-8

J. B. by Archibald MacLeish. Feb. 21-Mar. 2

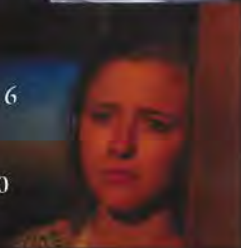
Oklahoma! by Rodgers and Hammerstein. Feb. 22-Mar. 2

Tales of the Lost Formicans by Constance Congdon. Mar. 28-Apr. 6

The Adding Machine by Elmer Rice. Apr. 5-13

A Midsummer Night's Dream by William Shakespeare. Apr. 11-20

Illinois State Dance Theatre Spring Concert. May 2-4



School of Theatre and Dance



ILLINOIS STATE
UNIVERSITY

Illinois' first public university



A Community of Artists for a Lifetime