

**Models
for
Partnership**

**IUPUI's Collaborative Digital
Projects in Content DM**

**Jennifer Johnson
Kristi Palmer
May 3, 2006**



Where are we going today?

- IUPUI University Library as an institution
- Models Collaboration
 - External-Outside IUPUI
 - Internal-library teams, other IUPUIers
 - Funding
 - Technical aspects-CONTENTdm
- Future



General notions about partnerships

- **Why collaborate?**
 - Past positive experiences
 - Funding
 - Other resources, expertise, material
 - Mission
- **Finding partners**
 - Cultural institutions in our area
 - Groups within the university



Digital Library Initiatives

- IUPUI University Library Mission Statement
- Digitization through the years
- Model for Partnership
- How to make a collaboration work
- The Digital Collections of IUPUI University Library
- Technical Side-Working with partners



IUPUI University Library mission statement

- To promote excellence in learning
- To serve as the gateway to information vital to research in scholarship
- To create unique scholarly resources with an emphasis on philanthropic studies, IUPUI generated research, and materials related to Central Indiana

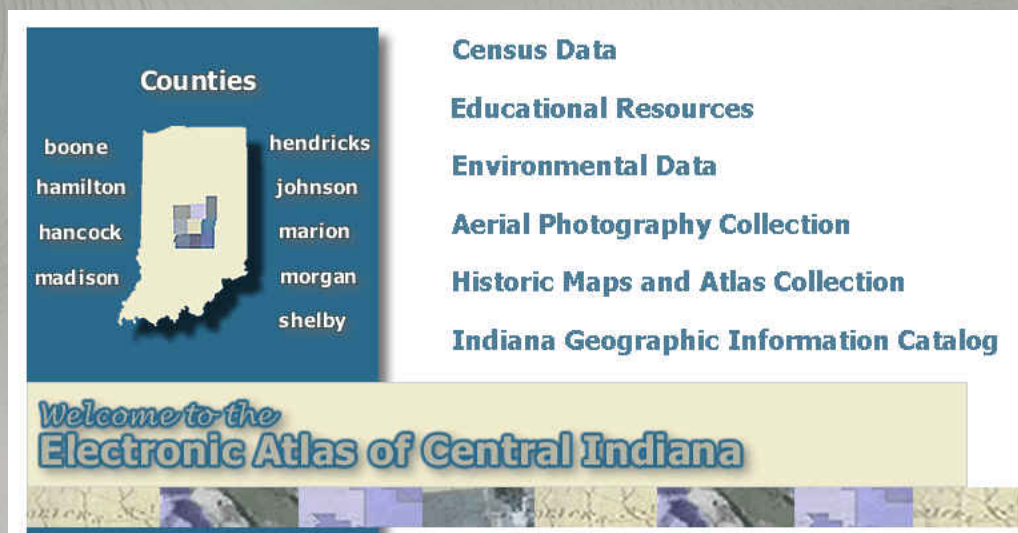


Creation of unique scholarly resources

- In 1996 University Library formed a partnership with the IUPUI Geology Department and the Center for Earth and Environmental Science to begin digitizing aerial photography for counties within the Metropolitan Statistical area (9 counties surrounding Marion County).

The Electronic Atlas of Central Indiana

- In 1999 University Library received a two year grant from the Indianapolis Foundation to create the Electronic Atlas of Central Indiana.



The screenshot displays the website's navigation menu and a map of central Indiana. On the left, a blue box titled "Counties" contains a map of Indiana with a central region highlighted in yellow. Surrounding the map are the names of the counties: boone, hamilton, hancock, madison, hendricks, johnson, marion, morgan, and shelby. To the right of the map, a list of resources is provided in blue text: Census Data, Educational Resources, Environmental Data, Aerial Photography Collection, Historic Maps and Atlas Collection, and Indiana Geographic Information Catalog. At the bottom, a yellow banner reads "Welcome to the Electronic Atlas of Central Indiana" in blue text, with a decorative border of small images below it.

Counties

boone hendricks
hamilton johnson
hancock marion
madison morgan
shelby

Census Data
Educational Resources
Environmental Data
Aerial Photography Collection
Historic Maps and Atlas Collection
Indiana Geographic Information Catalog

Welcome to the
Electronic Atlas of Central Indiana



The Electronic Atlas of Central Indiana

- Laid the groundwork for our digitization plan
 - University Library began to acquire hardware and software
 - Had an established internal partnership with the Geology Department
 - Seek external collaborations



Model for partnership: rule of thumb

**“We have the
Technology, they
have the stuff.”**



Indianapolis History Project

- In 2004, IUPUI partnered with the Indiana State Library and the Marion County Public Library to digitize various collections that pertained to the Indianapolis Area
 - Sanborn Maps/Baist Atlases
 - Indianapolis City Directories
 - Original State Plat Books
 - Various Books that pertain to Indianapolis



2005 LSTA grant cycle

- In 2005 University Library received LSTA funding to collaborate with Indiana University, The Historic Landmarks Foundation, and the Indiana State Archives to create online digital collections.

Digital Collections of IUPUI University Library



The Digital Collections of IUPUI University Library

[Home](#)[Digital Collections](#)[Partners](#)

Welcome to Our Digital Collections



IUPUI University Library Special Collections and Archives

This site features digital collections created by University Library in collaboration with partnering organizations.

University Library has built a digital library infrastructure using a suite of high-end systems and software. We are part of a University system dedicated to providing the best in technical capabilities to its population. We have made a commitment to develop an infrastructure that supports digital collections for the Indiana region.

We invite you to browse the digital collections with the option to search multiple collections using CONTENTdm. We would also like to recognize our partnering organizations and look forward to future digital projects and collaborations.

Featured Collection



Browse the [Indianapolis Sanborn Map Collection](#). Years available online include 1887 and 1898.

Created: 13 June 2005, bpd | Updated: 22 February 2006, bpd
Original Contributions Copyright 2005 - The Trustees of Indiana University

Digital Collections page



The Digital Collections of IUPUI University Library

[Home](#)[Digital Collections](#)[Partners](#)

Digital Collections

[A](#) [B](#) [C](#) [D](#) [E](#) [F](#) [G](#) [H](#) [I](#) [J](#) [K](#) [L](#) [M](#) [N](#) [O](#) [P](#) [Q](#) [R](#) [S](#) [T](#) [U](#) [V](#) [W](#) [X](#) [Y](#) [Z](#)



[Birds of Indiana](#) (Amos W. Butler: 1892)

This Web edition of the 1892 publication *The Birds of Indiana* is a hypertext version of the original book by Amos W. Butler. No supplemental aids, indexes, or material were added to it except for the addition of the search function. This digital version was published in itself to supplement the digitization of a 1984 publication, *The Birds of Indiana* by Russell E. Mumford, Charles E. Keller, William E. Zimmerman (IU Press). Ironically enough, in the same way *The Birds of Indiana* (1984) was inspired by Butler's *Birds*, so was the digitization of this project reciprocally inspired.



[Birds of Indiana](#) (Mumford, Keller, Zimmerman: 1984)

The creation of The Birds of Indiana Web edition was funded by a grant from the Library Fund of the [Indianapolis Foundation](#). Special thanks for their continuing support goes to Indiana University Press and John Gallman, the Director. The Birds of Indiana is reproduced in this electronic edition by special arrangements with [Indiana University Press](#) for distribution in Marion County, Indiana. Orders for this book may be placed by calling Indiana University Press: 1-800-842-6796. **NOTICE:** Access to this Web site is limited to locations in Marion County, Indianapolis, Indiana, and to persons who are registered users of the Indianapolis-Marion County Public Library (IMCPL). Such locations may include, without limitation, the following: all schools, public libraries, college and university campuses located within Marion County, Indiana.

Partners page



The Digital Collections of IUPUI University Library

[Home](#)[Digital Collections](#)[Partners](#)

Partners



[Center for Earth and Environmental Science](#)

The Center for Earth and Environmental Science is a research center that works to make dramatic contributions to environmental science within the State of Indiana, the Midwest, and beyond. In 1996 IUPUI began a collaboration with the Center for Earth and Environmental Science (CEES) and the IUPUI school of Geology to produce and convert spatially-referenced data sets and maintain an archive of GIS data. This cooperative agreement between CEES and the IUPUI University Library increases the availability of a wide variety of spatial information and provides exciting opportunities in the use of GIS for students and the local community. A grant from the Library Fund of the Indianapolis Foundation provided the ability to create the Electronic Atlas of Central Indiana.

Online Collection: [The Electronic Atlas of Central Indiana](#)



[Historic Landmarks Foundation of Indiana](#)

Historic Landmarks Foundation of Indiana works to rescue and restore unique and significant architectural structures, including national landmarks, historic houses, barns, and bridges in Indiana. This organization strives to revitalize buildings and enrich lives through preserving Indiana's historic landmarks. University Library has collaborated with the Historic Landmarks Foundation of Indiana to inform the general public about Indiana's historic structures and to provide online access to some of this organization's valuable materials.

Online Collections: [Indiana Historic Architecture Slide Collection](#), [Indiana Historic Sites and Structures Inventory](#)



Indianapolis Sanborn Collection



The Digital Collections of IUPUI University Library

[Home](#)[Digital Collections](#)[Partners](#)

Indianapolis Sanborn Map Collection

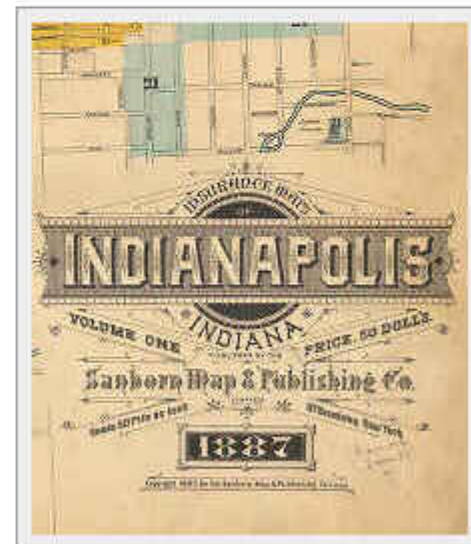
[Browse This Collection](#)[Advanced Search](#)

This collection consists of several large-scale color maps, from 1887 and 1898, depicting the commercial, industrial, and residential sections of Indianapolis, Indiana. They show individual building "footprints", complete with construction details, such as building material (brick, adobe, frame, etc.), height (of larger buildings), number of stories, location of doors, windows, chimneys and elevators, use of structure (dwelling, hotel, church, etc.), street address, and occasionally the ethnicity of the occupants.

The maps were originally produced for insurance underwriters, who used them to determine risks and establish premiums. Today these maps are used by scholars and researchers in such fields as history, urban geography, architectural history and preservation, ethnic studies, and urban archaeology.

In addition to keyword searching, extensive metadata enables you to search by landmark type, such as churches, or by specific landmark name, like Indianapolis Water Company. To do this click on "Advanced Search" and select the only the box for Indianapolis Sanborn Map Collection. At the top of the page, click on "Selected fields" and pick a field to search using the drop-down menu. Clicking on "show terms" will display a box with a list of terms to choose from. For more help with browsing or searching, click [here](#).

This collection is [powered by CONTENTdm](#) ®



Historic Landmarks Foundation of Indiana

The Digital Collections of IUPUI University Library

[Home](#)[Digital Collections](#)[Partners](#)

Indiana Historic Architecture Slide Collection

[Browse This Collection](#)[Advanced Search](#)

Since the founding of Historic Landmarks Foundation of Indiana in 1960, photographic images have played a key role in the organization's promotion of historic preservation. Nothing provides more oohs and ahhs or inspiration than a set of dramatic before-and-after images. These images have formed the basis for educational programs and illustrated the foundation's magazine, the *Indiana Preservationist*, for decades.

A Library Services Technology Grant allowed IUPUI to begin digitization of Historic Landmarks' slide collection, now making it available to the public. The collection contains images from the early 1960s through present day and captures historic architecture throughout the state. Educators will find the collection useful in documenting architectural styles and Indiana history. Old house enthusiasts will find ideas for paint colors, restoration techniques, and inspiration.

The visual image collection of Historic Landmarks Foundation of Indiana is only one component of the organization's library and information center. For more information on the library, click [here](#).

Historic Landmarks Foundation of Indiana, the largest statewide preservation group in the U.S., saves, restores, and protects places of architectural and historical significance. From its ten offices, Historic Landmarks leads and assists others in rescuing endangered landmarks and preserving buildings and districts. Historic Landmarks Foundation of Indiana is a private, not-for-profit organization. For more information, call Historic Landmarks, 317-639-4534/800-450-4534 or visit



HISTORIC
LANDMARKS
FOUNDATION OF
INDIANA



Collection page



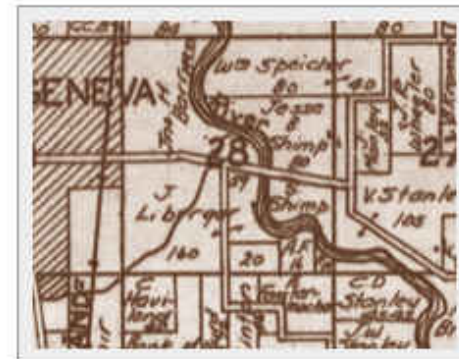
The Digital Collections of IUPUI University Library

[Home](#)[Digital Collections](#)[Partners](#)

The Indiana Plat Books Collection

[Browse This Collection](#)[Advanced Search](#)

The digitization of Volumes 1-6 of the Plat Books of Indiana Counties was made possible by a grant from the library fund of Indianapolis Foundation, an affiliate of the Central Indiana Community Foundation. These geographic resources are historic guides to the communities of Indiana, showing townships, roads and section numbers. The Plat books are owned by and scanned in collaboration with the Indiana State Library.



This collection is [powered by CONTENTdm](#)®

Questions or Comments? [Contact Us](#)
Created: 19 December 2005, bpd/aah | Updated: 19 January 2006, bpd
Original Contributions [Copyright](#) 2006 - The Trustees of [Indiana University](#)
Template Created: 17 February 2006, bpd

CONTENTdm

The Digital Collections of IUPUI University Library

[advanced search](#) | [preferences](#) | [my favorites](#) | [help](#)

[select all](#) | [clear all](#) | [add to favorites](#)

page 1 of 1 : (<< 1 >>) || [previous](#) | [next](#)

Browsing 6 item(s) in:

Image:	▲ Title:	Subject:	Description:
<input type="checkbox"/> 1. 	Plat Books of Indiana Counties Vol. 1	Indiana -- Maps	Covers counties starting with letters A-C.
<input type="checkbox"/> 2. 	Plat Books of Indiana Counties Vol. 2	Indiana -- Maps	Covers counties starting with letters D-G.
<input type="checkbox"/> 3. 	Plat Books of Indiana Counties Vol. 3	Indiana -- Maps	Covers counties starting with letters H-L.
<input type="checkbox"/> 4. 	Plat Books of Indiana Counties Vol. 4	Indiana -- Maps	Covers counties starting with letters M-O.



Are we there yet?

- Established Partnership
- Selected Collection to be digitized
- Secured funding
- Everyone understands the expectations of the project
- How do we work with our partners to sort through the technology issues- digitization and metadata creation?

Internal model for partnership: DLT and BAMS

- **Team structure**
- **CONTENTdm**
 - **Cost effective**
 - **Employs Standards**
 - **Dublin Core**
 - **Controlled vocabulary**
 - **Staff familiarity**
- **METADATA!!!**
 - **Bibliographic and Metadata Services as metadata creators**
 - **Bibliographic and Metadata Services as metadata consultants**



Traditional cataloging skills

- Ability to use standards to create representation (bibliographic record) of an item (book, map, web site, realia)
- Understanding of bibliographic record
- Understanding of controlled vocabulary
- Understanding of classification systems
- Thorough understanding of ILS
- Skill in using bibliographic utility and other bibliographic databases
- Organization of information

Model for partnership: metadata creators

- ContentDM
- Dublin Core
- Art and Architecture Thesaurus
- Library of Congress Subject Headings
- Library of Congress Authorities File
- BAMS created guide

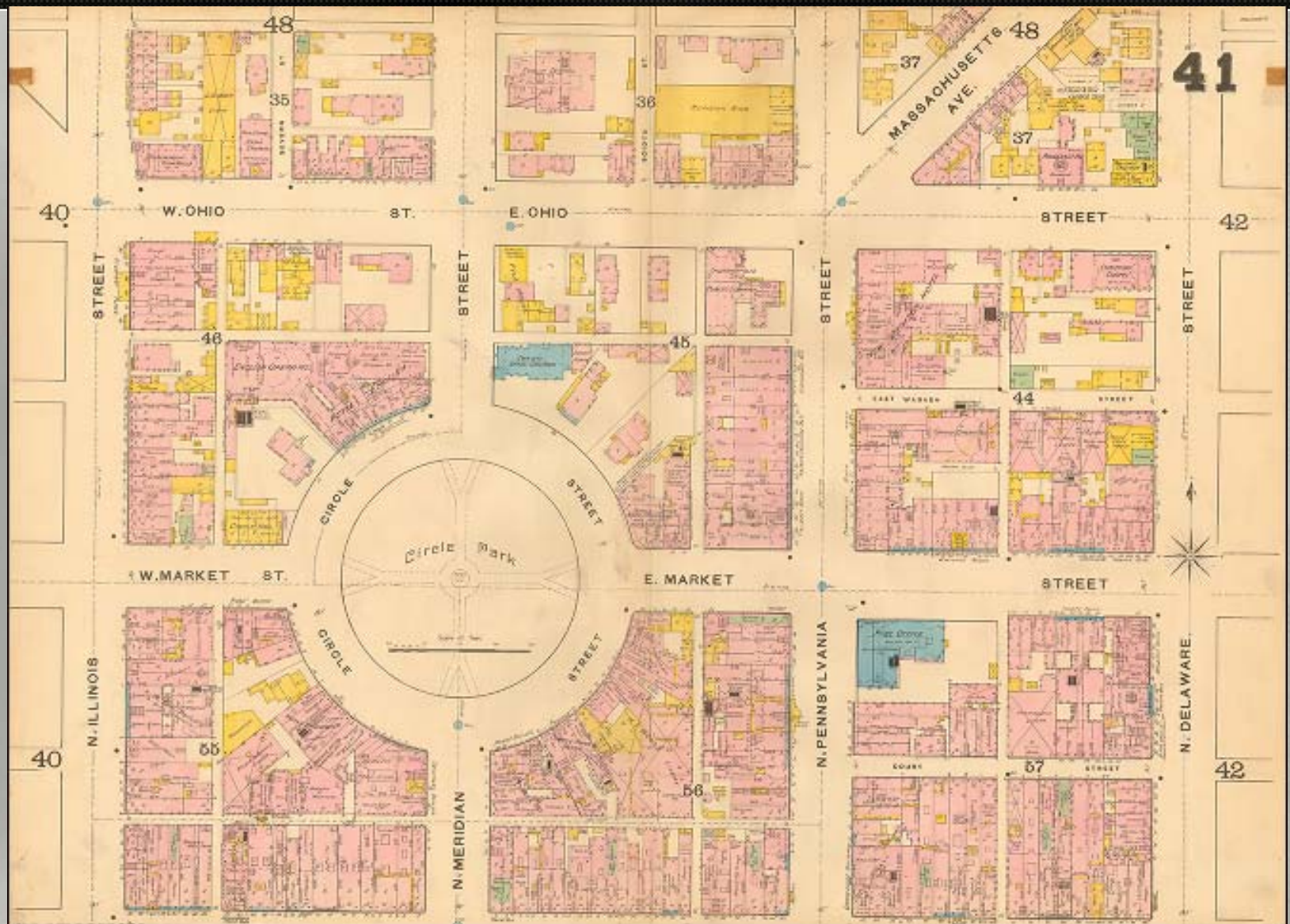
Books	Rec stat	Entered	Replaced
Type a ELvl Srcr d Audn Ctrl Lang eng		19980423	19990929415333.0
BLvl m Form Conf 0 Blog MRec Ctrv txu			
Cont b GPub LITF 0 Indx 1			
Desc a Ils a b Fest 0 DtSt s Dates 1997 ,			

010		97094262
040		OCO #c DLC #d OCO #d IQU
020		0965969800 (pbk) : #c \$16.60
042		lccopycat
043		n-us—
050	0 0	HG9771 #b .O85 1997
092		368.11 #b .O86f
090		#b
049		IUPB
100	1	Oswald, Diane L.
245	1 0	Fire insurance maps : #b their history and applications / #c Diane L. Oswald.
260		College Station, Tex. : #b Lacewing Press, #c c1997.
300		102 p. : #b ill., maps ; #c 22 cm.
504		Includes bibliographical references (p. 96) and index.
650	0	Insurance, Fire -- United States -- Maps -- History

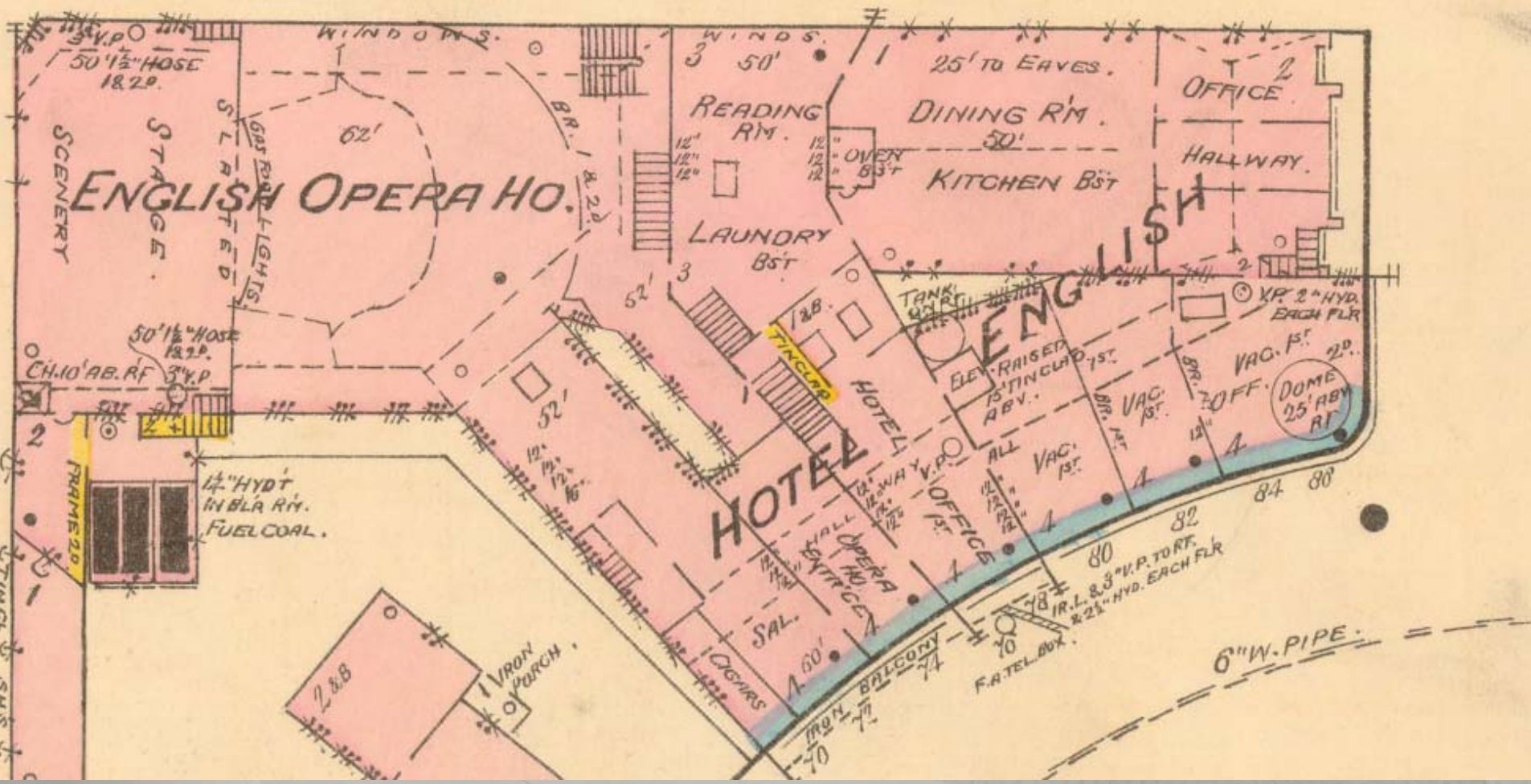


Title	Indianapolis Sanborn Map #22, 1887
Item Id	00024.tif
Map #	22
Volume	1887, vol. 1
Original Creator	Sanborn Map Company
Subject	Indianapolis (Ind.) -- Maps; Insurance, Fire -- Indiana -- Indianapolis -- Maps
Item Type	Map
Landmark Type	assembly rooms; bakeries; barbershops; barber shops; barbershops; cigar manufacturers; pool halls; confectionaries; newsstands; drugstores; hay stores; feed stores; lodging houses; storage facilities; machine shops; barber shops; doctors' offices; cobblers; parsonages
Landmark Name	A. E. Sloan Livery; African Methodist Episcopal Zion Church (Indianapolis, Ind.); William McGinnis Lumber and Coal Yard; St. Patrick's Hall (Indianapolis, Ind.); Fred. Gansberg Coal Yard; South Side Carriage and Wagon Shop; Brothers' Dormitory; Colored Church
Streets/Address Range	Bismarck 1-69; Bradshaw 30-107; Buchanan 140-255; Coburn 290-425; Dillon, West Side Hosbrook to Morris; Dougherty 138-275; Elk; Grove Fletcher to Vine Ave.; Holmes; Hosbrook 125-170; Hosbrook 85-123; McKernan; Morris, E. Wright to Short;
Original Date	1887

Indianapolis Sanborn Map Collection



Map closeup



Acquisition station

Edit Metadata	
Title	Indianapolis Sanborn Map #9, 1887
Item Id	00011.tif
Map #	9
Volume	1887, vol. 1
Original Creator	Sanborn Map Company
Subject	Indianapolis (Ind.) -- Maps; Insurance, Fire -- Indiana -- Indianapolis -- Maps
Item Type	Map
Landmark Type	machine shops; metalworking plants; mills (buildings); streams; railroads; railroad stations; laundries; hay stores; feed stores; coal yards; warehouses; gasworks; agricultural implements warehouses; lumberyards; rag storage facilities; wagon shops; smithies; freight houses; tent and awning manufacturers; power plants; painters; bakeries
Landmark Name	Western Machine Works; Sinker-Davis Company (Indianapolis,Ind.); Evans Linseed Oil Mill. Ruins.; Pogue's Run; Jeffersonville, Madison and Indianapolis Railroad Company. Freight Depot; Chicago, St. Louis & Pittsburgh Railroad Company. Freight Depot; Indianapolis Union Railway Company; Cleveland, Columbus, Cincinnati, and Indianapolis Railway Company. Freight Depot; Cincinnati, Hamilton, and Dayton Railroad Company. Freight Depot; Somerville Steam Laundry; Sammons and Mueller; Cincinnati, Indianapolis, St. Louis, and Chicago Railway Company; Indianapolis Gas
Streets/Address Range	Alabama, S. 101-200; Delaware, S. 101-200; Erie South to Louisiana; George, E. 49-211; Louisiana, E. 160-195; New Jersey, S. 102-200; Pennsylvania, S. 101-199; South, E. 48-190; Virginia Ave. 101-149
Original Date	1887
Original Index Date	1887

Controlled Vocabulary
2nd hand stores USE thrift shops
5 cent theatres USE motion picture theaters
advertisers
African American churches
African American shacks
African American tenement houses
agricultural implements manufacturers
agricultural implements warehouses
almshouses
ammonia works
ammunition warehouses
amusement parks
animal housing
animal shelters
apartment houses
apiaries
apron manufacturers
arcades
armories (military buildings)
artificial limbs manufacturers
artists
asphalt plants
assembly halls
assembly plants
associations
asylums
auction houses
auditoriums
automobile parts manufacturers
automobile plants
automobile repairs shops USE service stations
automobile showrooms
bakeries
baking powder manufacturers
bandstands
banks (buildings)
banquet halls
barbershops

Sanborns Maps: Then and Now

MrSid

- DLT scans and places maps in network folder, also creates thumbnails for maps
- Each copy cataloger has her own Acquisition Station where she imports url to full resolution image and thumbnail into Acquisition station, adds metadata, uploads new record
- Uploaded records awaits editing in staging area
- Metadata editor edits, approves and runs collection index'
- Items added to collection

JPEG2000

- DLT scan and batch uploads maps with template information included
- Each copy cataloger has her own Acquisition Station where she re-imports image into Acquisition station, adds metadata, uploads updated record
- Uploaded record awaits editing in staging area
- Metadata editor edits, approves and runs collection index'
- Items added to collection



Model for partnership: metadata consultant

○ Historic Landmarks Foundation

○ Metadata

- Dublin Core usage
- Field name, order, properties
- Controlled vocabularies
- General standards
- Database setup → Website setup

○ Technology

- Laptop
- High speed connection
- Network permissions

Indiana Historic Architecture Slide Collection



Models for partnership examples recap

- **DLT technology, DLT metadata, outside “stuff”**
- **DLT technology, BAMS metadata, outside “stuff”**
- **DLT technology, BAMS and DLT metadata consultation, outside “stuff”, outside metadata creation**
- **DLT technology, DLT metadata, IUPUI “stuff”**
- **IUPUI Special Collections technology, IUPUI Special Collections “stuff”, IUPUI Special Collections metadata (same is true for Herron Art School collections)**



Our partnerships and funding

- [IUPUI Image Collection](#) – Medical School and other schools
- [Indiana Supreme Court Collection](#) – Indiana Historical Bureau
- Indiana Historic Architecture Slide Collection – Historic Landmarks Foundation of Indiana, funded by LSTA grant
- Philanthropic Resources Online (PRO) – Philanthropic Studies Library (internal partner)
- Historic Indiana Map Collection – IU Bloomington, Connor Prairie, Indiana State Library, funded by the Indianapolis Foundation
- Indiana Historic Sites and Structures Inventory – Historic Landmarks Foundation of Indiana
- Indianapolis Sanborn Collection – Indiana State Library, funded by the Indianapolis Foundation
- War of 1812 Collection – Indiana State Library
- Plat Books of Indiana Counties – Indiana State Library, funded by the Indianapolis Foundation
- Governor Morton Telegraph Books – Indiana State Archives, funded by LSTA grant
- Historic Atlas Collection – Indiana State Library, Indianapolis – Marion County Public Library (IMCPL), IUPUI University Library
- Indianapolis City Directories – Indiana State Library, IMCPL, funded by the Indianapolis Foundation
- Irish Newspaper Collection – IUPUI School of Liberal Arts
- Niles Wishard Scrapbook – Indiana Medical History Museum
- American Turner Topics – Supported by the Hoyt-Reichmann fund

Conclusion

- Plans for the future:
 - Automation
 - New projects, new partnerships
 - Publicity for collections
 - Migration of older collections
- Challenges for the future:
 - Funding competition
 - Remaining innovative
 - Longevity

