

2018

## Single-inhaler fluticasone furoate/umeclidinium/vilanterol versus fluticasone furoate/vilanterol plus umeclidinium using two inhalers for chronic obstructive pulmonary disease: A randomized non-inferiority study

Peter R. Bremner

*The University of Notre Dame Australia*, [peter.bremner@nd.edu.au](mailto:peter.bremner@nd.edu.au)

Ruby Birk

Noushin Brealey

Afisi S. Ismaila

Chang-Qing Zhu

*See next page for additional authors*

Follow this and additional works at: [https://researchonline.nd.edu.au/med\\_article](https://researchonline.nd.edu.au/med_article)



Part of the [Medicine and Health Sciences Commons](#)

This article was originally published as:

Bremner, P. R., Birk, R., Brealey, N., Ismaila, A. S., Zhu, C., & Lipson, D. A. (2018). Single-inhaler fluticasone furoate/umeclidinium/vilanterol versus fluticasone furoate/vilanterol plus umeclidinium using two inhalers for chronic obstructive pulmonary disease: A randomized non-inferiority study. *Respiratory Research*, 19 (1).

Original article available here:

<https://doi.org/10.1186/s12931-018-0724-0>

This article is posted on ResearchOnline@ND at  
[https://researchonline.nd.edu.au/med\\_article/910](https://researchonline.nd.edu.au/med_article/910). For more  
information, please contact [researchonline@nd.edu.au](mailto:researchonline@nd.edu.au).



---

**Authors**

Peter R. Bremner, Ruby Birk, Noushin Brealey, Afisi S. Ismaila, Chang-Qing Zhu, and David A. Lipson

This is an Open Access article distributed in accordance with the Creative Commons Attribution 4.0 International license (CC BY 4.0), which permits unrestricted use, distribution, and reproduction in any medium, provided the original author and source are credited.

See: <https://creativecommons.org/licenses/by/4.0/>

This article originally published in *Respiratory Research* available at:

<https://doi.org/10.1186/s12931-018-0724-0>

Bremner, P.R., Birk, R., Brealey, N., Ismaila, A.S., Zhu, C., and Lipson, D.A. (2018) Single-inhaler fluticasone furoate/umeclidinium/vilanterol versus fluticasone furoate/vilanterol plus umeclidinium using two inhalers for chronic obstructive pulmonary disease: A randomized non-inferiority study. *Respiratory Research*, 19(1). doi: 10.1186/s12931-018-0724-0

RESEARCH

Open Access



# Single-inhaler fluticasone furoate/umeclidinium/vilanterol versus fluticasone furoate/vilanterol plus umeclidinium using two inhalers for chronic obstructive pulmonary disease: a randomized non-inferiority study

Peter R. Bremner<sup>1</sup>, Ruby Birk<sup>2</sup>, Noushin Brealey<sup>2</sup>, Afisi S. Ismaila<sup>3,4</sup>, Chang-Qing Zhu<sup>2</sup> and David A. Lipson<sup>5,6\*</sup>

## Abstract

**Background:** Single-inhaler fluticasone furoate/umeclidinium/vilanterol (FF/UMEC/VI) 100/62.5/25 µg has been shown to improve lung function and health status, and reduce exacerbations, versus budesonide/formoterol in patients with chronic obstructive pulmonary disease (COPD). We evaluated the non-inferiority of single-inhaler FF/UMEC/VI versus FF/VI + UMEC using two inhalers.

**Methods:** Eligible patients with COPD (aged ≥40 years; ≥1 moderate/severe exacerbation in the 12 months before screening) were randomized (1:1; stratified by the number of long-acting bronchodilators [0, 1 or 2] per day during run-in) to receive 24-week FF/UMEC/VI 100/62.5/25 µg and placebo or FF/VI 100/25 µg + UMEC 62.5 µg; all treatments/placebo were delivered using the ELLIPTA inhaler once-daily in the morning. Primary endpoint: change from baseline in trough forced expiratory volume in 1 s (FEV<sub>1</sub>) at Week 24. The non-inferiority margin for the lower 95% confidence limit was set at –50 mL.

**Results:** A total of 1055 patients (844 [80%] of whom were enrolled on combination maintenance therapy) were randomized to receive FF/UMEC/VI (*n* = 527) or FF/VI + UMEC (*n* = 528). Mean change from baseline in trough FEV<sub>1</sub> at Week 24 was 113 mL (95% CI 91, 135) for FF/UMEC/VI and 95 mL (95% CI 72, 117) for FF/VI + UMEC; the between-treatment difference of 18 mL (95% CI -13, 50) confirmed FF/UMEC/VI's was considered non-inferior to FF/VI + UMEC. At Week 24, the proportion of responders based on St George's Respiratory Questionnaire Total score was 50% (FF/UMEC/VI) and 51% (FF/VI + UMEC); the proportion of responders based on the Transitional Dyspnea Index focal score was similar (56% both groups). A similar proportion of patients experienced a moderate/severe exacerbation in the FF/UMEC/VI (24%) and FF/VI + UMEC (27%) groups; the hazard ratio for time to first moderate/severe exacerbation with FF/UMEC/VI versus FF/VI + UMEC was 0.87 (95% CI 0.68, 1.12). The incidence of adverse events was comparable in both groups (48%); the incidence of serious adverse events was 10% (FF/UMEC/VI) and 11% (FF/VI + UMEC).

(Continued on next page)

\* Correspondence: [david.a.lipson@gsk.com](mailto:david.a.lipson@gsk.com)

<sup>5</sup>GSK, 709 Swedeland Road, UW2531, King of Prussia, PA 19406, USA

<sup>6</sup>Perelman School of Medicine, University of Pennsylvania, Philadelphia, PA, USA

Full list of author information is available at the end of the article



© The Author(s). 2018 **Open Access** This article is distributed under the terms of the Creative Commons Attribution 4.0 International License (<http://creativecommons.org/licenses/by/4.0/>), which permits unrestricted use, distribution, and reproduction in any medium, provided you give appropriate credit to the original author(s) and the source, provide a link to the Creative Commons license, and indicate if changes were made. The Creative Commons Public Domain Dedication waiver (<http://creativecommons.org/publicdomain/zero/1.0/>) applies to the data made available in this article, unless otherwise stated.

(Continued from previous page)

**Conclusions:** Single-inhaler triple therapy (FF/UMEC/VI) is non-inferior to two inhalers (FF/VI + UMEC) on trough FEV<sub>1</sub> change from baseline at 24 weeks. Results were similar on all other measures of efficacy, health-related quality of life, and safety.

**Trial registration:** GSK study CTT200812; ClinicalTrials.gov [NCT02729051](https://clinicaltrials.gov/ct2/show/study/NCT02729051) (submitted 31 March 2016).

**Keywords:** COPD, Exacerbations, FEV<sub>1</sub>, Lung function, Fluticasone furoate/umeclidinium/vilanterol, Randomized controlled trial, Single-inhaler triple therapy

## Background

The Global Initiative for Chronic Obstructive Lung Disease (GOLD) strategy document recommends escalating to combination triple therapy with a long-acting  $\beta_2$ -agonist (LABA), a long-acting muscarinic antagonist (LAMA) and an inhaled corticosteroid (ICS) for patients with advanced chronic obstructive pulmonary disease (COPD) and persistent symptoms (GOLD Group D) who experience further symptoms or exacerbations on dual LABA/LAMA or LABA/ICS therapy [1]. Although triple therapy for COPD using multiple inhalers is common in current clinical practice [2, 3], the comparative benefits of COPD treatment regimens using single or multiple inhalers are not well understood.

Triple therapy with a LAMA plus ICS/LABA administered using multiple inhalers has been shown to improve forced expiratory volume in 1 s (FEV<sub>1</sub>) and health status, and reduce exacerbations and rescue medication use, in patients with COPD compared with ICS plus LABA dual therapy or LAMA monotherapy [4–9]. Several recent large randomized controlled trials have also assessed the efficacy and safety of triple ICS/LABA/LAMA therapy using a single fixed-dose combination inhaler for patients with COPD at increased exacerbation risk [10–12].

The FULFIL study demonstrated improvements in trough FEV<sub>1</sub>, health status, and reductions in moderate/severe exacerbation rate, with once-daily, single-inhaler fluticasone furoate/umeclidinium/vilanterol (FF/UMEC/VI) versus twice-daily budesonide/formoterol (FOR) [10]. Similarly, the TRILOGY study showed improvements in lung function and exacerbation frequency with a twice-daily, single-inhaler ICS/LABA/LAMA combination of beclomethasone dipropionate (BDP)/FOR/glycopyrronium bromide (GB) compared with BDP/FOR alone [11]. Furthermore, results from the TRINITY study confirmed that the twice-daily, single-inhaler BDP/FOR/GB combination was non-inferior to twice-daily BDP/FOR plus tiotropium using multiple inhalers on change from baseline in pre-dose FEV<sub>1</sub> [12].

Given that single-inhaler triple therapy is soon expected to be widely available, the current study was specifically designed to demonstrate the non-inferiority of the only currently available once-daily, single-inhaler triple therapy (FF/UMEC/VI) to an alternative once-daily triple therapy

regimen using two inhalers (FF/VI + UMEC) on trough FEV<sub>1</sub> after 24 weeks of treatment. To our knowledge, this is the first study to specifically evaluate the same individual component molecules administered using either a single inhaler or multiple inhalers.

## Methods

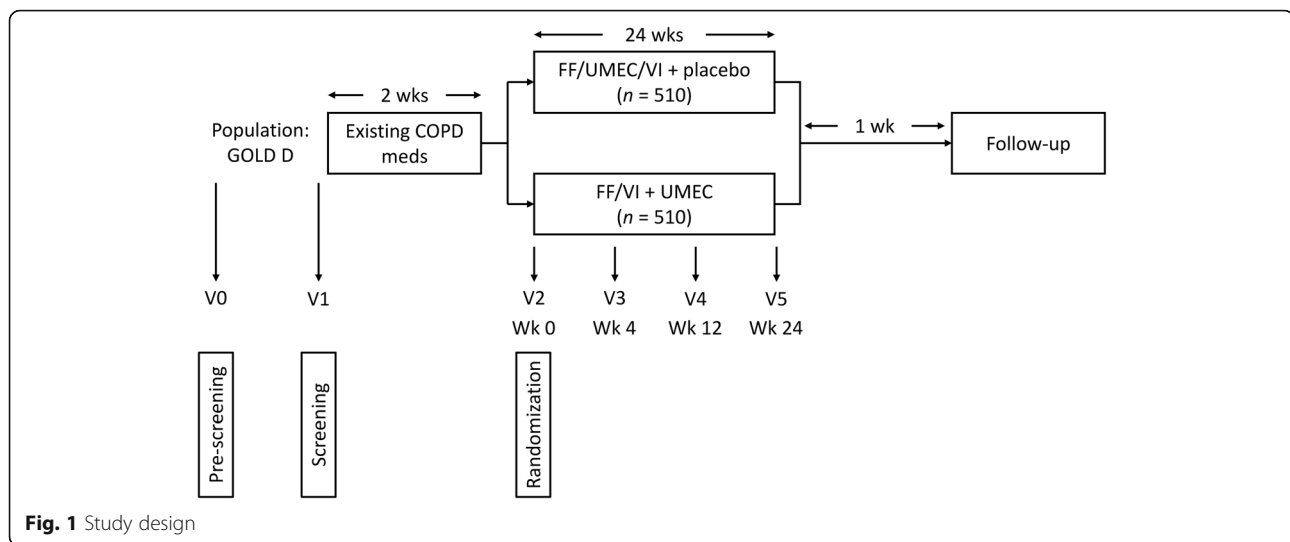
### Study design

This was a phase III, 24-week, randomized, double-blind, parallel group, multicenter non-inferiority study (GSK study CTT200812; ClinicalTrials.gov identifier NCT02729051) that assessed the efficacy of once-daily FF/UMEC/VI 100  $\mu$ g/62.5  $\mu$ g/25  $\mu$ g using a single ELLIPTA inhaler versus once-daily FF/VI 100  $\mu$ g/25  $\mu$ g plus UMEC 62.5  $\mu$ g using two ELLIPTA inhalers (Fig. 1). Prior to the beginning of the 24-week treatment period, there was a 2-week run-in period, during which patients continued their existing COPD medications. At randomization following the run-in period, all existing COPD medications were discontinued and patients started their assigned study treatment, with short-acting albuterol/salbutamol provided as rescue medication throughout the study. Study clinic visits occurred at pre-screening (visit 0), screening (visit 1), randomization (Week 0, visit 2), Week 4 (visit 3), Week 12 (visit 4), and Week 24 (visit 5). A safety follow-up telephone contact or clinic visit was conducted a week after study completion, or in the event of an early withdrawal.

### Patients

Patients aged  $\geq 40$  years with COPD and who were current/former smokers with a  $\geq 10$ -pack-year smoking history were eligible for enrollment. Other key inclusion criteria included: COPD Assessment Test™ (CAT) score  $\geq 10$  [13, 14]; a post-albuterol/salbutamol FEV<sub>1</sub>/forced vital capacity ratio  $< 0.70$ ; and a post-bronchodilator FEV<sub>1</sub>  $< 50\%$  of predicted and  $\geq 1$  moderate/severe exacerbation in the previous 12 months **or** a post-bronchodilator FEV<sub>1</sub>  $\geq 50\%$  to  $< 80\%$  of predicted and  $\geq 2$  moderate exacerbations or  $\geq 1$  severe exacerbation requiring hospitalization in the previous 12 months.

Exclusion criteria included: a current diagnosis of asthma (patients with a prior history of asthma were eligible if they had a current diagnosis of COPD that was the primary cause of their respiratory symptoms);  $\alpha 1$ -antitrypsin deficiency;



**Fig. 1** Study design

active tuberculosis; other respiratory disorders that were the primary cause of respiratory symptoms; lung resection surgery in the previous 12 months; risk factors for pneumonia (including immunosuppression and neurological disorders affecting control of the upper airway [e.g. Parkinson's disease or myasthenia gravis]; pneumonia and/or moderate/severe exacerbation that had not resolved at least 14 days prior to screening; respiratory infections; abnormal findings on chest X-ray; clinically significant comorbidities; unstable liver or cardiac disease; and cancer. Patients with a high risk for pneumonia (e.g. very low body mass index, severely malnourished, or very low FEV<sub>1</sub>) were only to be included at the discretion of the investigator.

All patients provided written, informed consent prior to enrollment.

### Treatments

Eligible patients were randomized (1:1) to receive 24 weeks of FF/UMEC/VI 100 µg/62.5 µg/25 µg in a single inhaler and placebo (second inhaler) or FF/VI 100 µg/25 µg and UMEC 62.5 µg, in separate inhalers; all treatments/placebo were delivered using the ELLIPTA inhaler once daily in the morning. Randomization was stratified by the number of long-acting bronchodilators (0, 1, or 2) per day during the run-in.

### Study assessments

The primary efficacy endpoint was change from baseline in trough FEV<sub>1</sub> at Week 24. Secondary efficacy endpoints included: proportion of responders based on the St George's Respiratory Questionnaire (SGRQ) Total score at Week 24; change from baseline in SGRQ Total score at Week 24; proportion of responders based on Transitional Dyspnea Index (TDI) focal score at Week 24; TDI focal score at Week 24; and time to first moderate/severe exacerbation. Safety endpoints included the

incidence of adverse events (AEs), serious AEs (SAEs), and AEs of special interest (AESIs).

Spirometry was performed at screening and pre-dose at each scheduled study visit during the treatment period using standardized equipment according to American Thoracic Society–European Respiratory Society guidelines [15]. The SGRQ for COPD patients [16] was completed by patients at randomization and Weeks 12 and 24. The Baseline Dyspnea Index was measured at randomization and the TDI was measured at Weeks 12 and 24; these assessments were completed electronically by patients using self-administered computerized versions. Potential COPD exacerbations were identified based on patient-reported symptoms in an eDiary and confirmed by follow-up with the investigator. Exacerbations were defined as worsening of COPD symptoms that were mild (self-managed by the patient; corticosteroids or antibiotics were not required), moderate (required oral/systemic corticosteroids and/or antibiotics), or severe (required hospitalization). The investigators and their study staff were responsible for detecting, documenting, and reporting AEs at each study visit. The CAT was completed at screening using the eDiary, before any other assessments, to assess eligibility.

### Statistical analyses

Sample size calculations used a one-sided 2.5% significance level and an estimate of residual standard deviation (SD) for trough FEV<sub>1</sub> at Week 24 of 220 mL (the SD estimate was based on previous phase III studies in patients with COPD). A study with 816 evaluable patients for the primary analysis would have 90% power to determine non-inferiority of FF/UMEC/VI versus FF/VI + UMEC based on trough FEV<sub>1</sub> at Week 24, when the margin of non-inferiority is 50 mL and the true mean treatment difference is assumed to be 0 mL. It was estimated that ~20% of patients who were randomized would either discontinue

study treatment or be excluded from the modified per-protocol (mPP) population at Week 24, and so ~ 1020 patients were planned for randomization.

The intent-to-treat (ITT) population included all randomized patients, except those randomized in error. The mPP population included all patients in the ITT population who did not have a protocol deviation affecting efficacy. Data following a severe/moderate COPD exacerbation or pneumonia were excluded from the analysis due to the potential impact of the event or the medications used to treat it. Patients with partial protocol deviations considered to impact efficacy were included in the mPP population but had their data excluded from analyses from the time of deviation onwards.

The primary efficacy endpoint was analyzed for the mPP population using a mixed model repeated measures (MMRM) analysis, including trough FEV<sub>1</sub> at Weeks 4, 12, and 24. The model included covariates of stratum (number of long-acting bronchodilators per day during the run-in [0/1 or 2]), baseline FEV<sub>1</sub>, visit, center group, treatment, visit by baseline, and visit by treatment interaction. The non-inferiority margin was set at 50 mL (half the minimal clinically important difference [MCID] for trough FEV<sub>1</sub> in COPD [17]). If the lower bound of the two-sided 95% confidence interval (CI) around the FF/UMEC/VI versus FF/VI + UMEC treatment difference was above -50 mL, then FF/UMEC/VI was considered non-inferior to FF/VI + UMEC. The MMRM analysis was repeated for the ITT population. All other endpoints were analyzed for the ITT population only.

The proportion of responders based on the SGRQ Total score at Weeks 12 and 24 was analyzed using a generalized linear mixed model, including covariates of baseline SGRQ Total score, treatment group, number of long-acting bronchodilators per day during the run-in (0/1 or 2), geographic region, visit, visit by baseline interaction, and visit by treatment interaction. The number and proportion of responders and non-responders for each treatment at Weeks 12 and 24 was calculated and an odds ratio (OR) for the comparison between FF/UMEC/VI and FF/VI + UMEC with associated 95% CI was provided. The proportion of responders based on the TDI focal score was analyzed in the same way for proportion of responders based on SGRQ Total score. Change from baseline in SGRQ Total score and change from baseline in TDI total score at Weeks 12 and 24 were analyzed separately as described for the primary analysis.

A Cox proportional hazards model was used to compare the time to first moderate/severe COPD exacerbation during 24 weeks of treatment with either FF/UMEC/VI or FF/VI + UMEC. This model used covariates of treatment group, gender, exacerbation history (0, 1, or 2 moderate/severe exacerbations within 12 months of screening), smoking status at screening, number of long-acting

bronchodilators per day during the run-in (0/1 or  $\geq 2$ ), geographic region, and baseline percent predicted FEV<sub>1</sub>. A Kaplan–Meier analysis was performed to produce a figure showing Kaplan–Meier survivor functions of the proportion of patients with a first moderate/severe exacerbation over time for each treatment group.

The number and proportion of patients experiencing at least one AE of any type, AEs within each body system, and AEs within each Medical Dictionary for Regulatory Activities preferred term were recorded for each treatment group. Separate summaries were provided for all AEs, drug-related AEs, fatal AEs, non-fatal SAEs, AESIs, and AEs leading to withdrawal. SAEs and deaths were documented in case-narrative format.

## Results

### Patients

A total of 1311 patients were enrolled, of whom 1055 were randomized to receive study treatment (ITT population; FF/UMEC/VI,  $n = 527$ ; FF/VI + UMEC,  $n = 528$ ); 956 patients were included in the mPP population (FF/UMEC/VI,  $n = 478$ ; FF/VI + UMEC,  $n = 478$ ). In the ITT population, 94% of patients completed the study in each treatment group. Patient demographics and clinical characteristics in the ITT population were generally well balanced between the treatment groups, with no significant differences in terms of disease severity, GOLD grade or exacerbation history at baseline (Table 1); current and past medical conditions and the incidence of cardiovascular risk factors at baseline were also similar between the two treatment arms. Patient characteristics in the mPP population were similar (not shown).

### Efficacy

In the mPP population, the mean change from baseline in trough FEV<sub>1</sub> at Week 24 was 113 mL (95% CI 91, 135) for FF/UMEC/VI and 95 mL (95% CI 72, 117) for FF/VI + UMEC; the between-treatment difference was 18 mL (95% CI -13, 50) (Fig. 2). As the lower bound of the 95% CI for the comparison was above the predefined non-inferiority margin (-50 mL), FF/UMEC/VI was considered non-inferior to FF/VI + UMEC. Comparable findings were observed in the ITT population: the mean change from baseline in trough FEV<sub>1</sub> at Week 24 was 107 mL (95% CI 87, 126) for FF/UMEC/VI and 81 mL (95% CI 61, 100) for FF/VI + UMEC; the between-treatment difference was 26 mL (95% CI -2, 53).

In the ITT population, the proportion of responders based on the SGRQ Total score at Week 24 was similar in the FF/UMEC/VI group (50%) and FF/VI + UMEC group (51%); the OR of response versus non-response for FF/UMEC/VI versus FF/VI + UMEC was 0.92 (95% CI 0.71, 1.20). The mean change from baseline in SGRQ Total score at Week 24 was -5.8 (95% CI -7.0, -4.7) for

**Table 1** Patient demographics and clinical characteristics (ITT population)

Characteristic	FF/UMEC/VI 100/62.5/25 µg (N = 527)	FF/VI 100/25 µg + UMEC 62.5 µg (N = 528)	Total (N = 1055)
Age (years), mean (SD)	66.7 (8.5)	65.9 (8.8)	66.3 (8.6)
Female, n (%)	136 (26)	134 (25)	270 (26)
Current smoker at screening, n (%)	209 (40)	192 (36)	401 (38)
Smoking pack-years, mean (SD)	43.4 (23.9)	44.2 (25.2)	43.8 (24.6)
Current cardiovascular risk factors, n (%)	379 (72)	367 (70)	746 (71)
Number of exacerbations in previous 12 months, n (%) <sup>a</sup>			
1 moderate/severe	236 (45)	227 (43)	463 (44)
≥ 2 moderate/severe	291 (55)	301 (57)	592 (56)
≥ 2 moderate or ≥ 1 severe	352 (67)	360 (68)	712 (67)
History of pneumonia, n (%)	86 (16)	100 (19)	186 (18)
Screening lung function, mean (SD)	n = 515	n = 512	n = 1027
Post-bronchodilator FEV <sub>1</sub> , mL	1247 (465)	1297 (471)	1272 (469)
Post-bronchodilator FVC, mL	2879 (885)	2896 (849)	2887 (867)
Post-bronchodilator FEV <sub>1</sub> /FVC ratio	0.440 (0.116)	0.455 (0.119)	0.447 (0.118)
Post-bronchodilator percent predicted FEV <sub>1</sub>	44.5 (14.5)	45.5 (14.1)	45.0 (14.3)
Percent reversibility	9.02 (11.22)	8.87 (10.15) <sup>b</sup>	8.95 (10.69)
Number of long-acting bronchodilators per day during the run-in, n (%)			
0/1	225 (43)	226 (43)	451 (43)
2	302 (57)	302 (57)	604 (57)
Concomitant COPD medications taken at screening, n (%)			
Single-inhaler maintenance bronchodilator	40 (8)	42 (8)	82 (8)
LAMA	32 (6)	35 (7)	67 (6)
LABA	8 (2)	7 (1)	15 (1)
Combination therapy	448 (85)	443 (84)	891 (84)
ICS + LABA+LAMA	198 (38)	193 (37)	391 (37)
ICS + LABA	144 (27)	137 (26)	281 (27)
LABA+LAMA	62 (12)	76 (14)	138 (13)
ICS + LABA+LAMA+ xanthine	29 (6)	25 (5)	54 (5)
ICS + LAMA	7 (1)	9 (2)	16 (2)
LABA+LAMA+xanthine	8 (2)	3 (< 1)	11 (1)
COPD severity at screening			
GOLD grade, n (%)	n = 515	n = 512	n = 1027
1 (mild)	0	1 (< 1)	1 (< 1)
2 (moderate)	174 (34)	189 (37)	363 (35)
3 (severe)	251 (49)	253 (49)	504 (49)
4 (very severe)	90 (17)	69 (13)	159 (15)
Reversible, n (%) <sup>c</sup>	n = 515	n = 511	n = 1026
Yes	73 (14)	74 (14)	147 (14)
GOLD grade/exacerbation history, n (%) <sup>a</sup>	n = 514	n = 512	n = 1026
Grade 1/2 with ≥ 2 moderate or ≥ 1 severe	173 (34)	190 (37)	363 (35)
Grade 3/4 with < 2 moderate and no severe	171 (33)	164 (32)	335 (33)
Grade 3/4 with ≥ 2 moderate or ≥ 1 severe	170 (33)	158 (31)	328 (32)
CAT score, mean (SD)	19.6 (5.8)	20.1 (6.1)	19.9 (6.0)

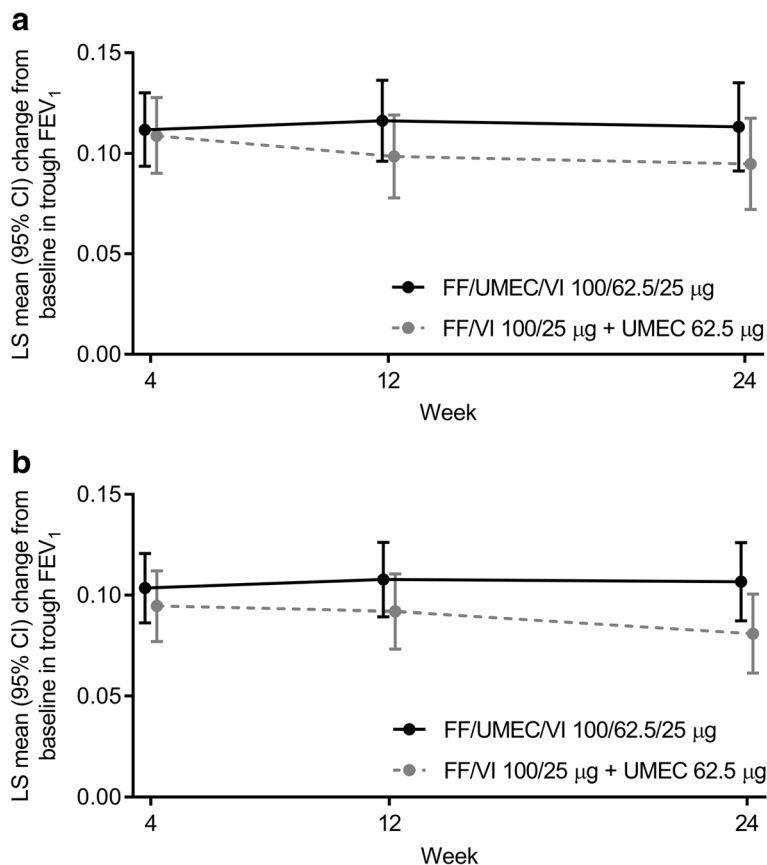
CAT COPD Assessment Test™, COPD chronic obstructive pulmonary disease, FEV<sub>1</sub> forced expiratory volume in 1 s, FF fluticasone furoate, FVC forced vital capacity, GOLD Global Initiative for Chronic Obstructive Lung Disease, ICS inhaled corticosteroid, ITT intent-to-treat, LABA long-acting β<sub>2</sub>-agonist, LAMA long-acting muscarinic antagonist, SD standard deviation, UMEC umeclidinium, VI vilanterol

<sup>a</sup>Moderate exacerbations were defined as exacerbations requiring oral/systemic corticosteroids and/or antibiotics (not involving hospitalization). Severe exacerbations were defined as exacerbations that required in-patient hospitalization

<sup>b</sup>FF/VI + UMEC, n = 511

<sup>c</sup>Reversible was an increase in FEV<sub>1</sub> of ≥ 12% and ≥ 200 mL following administration of salbutamol. Not reversible was an increase in FEV<sub>1</sub> of < 12% or ≥ 200 mL increase that is < 12% of the pre-salbutamol FEV<sub>1</sub>



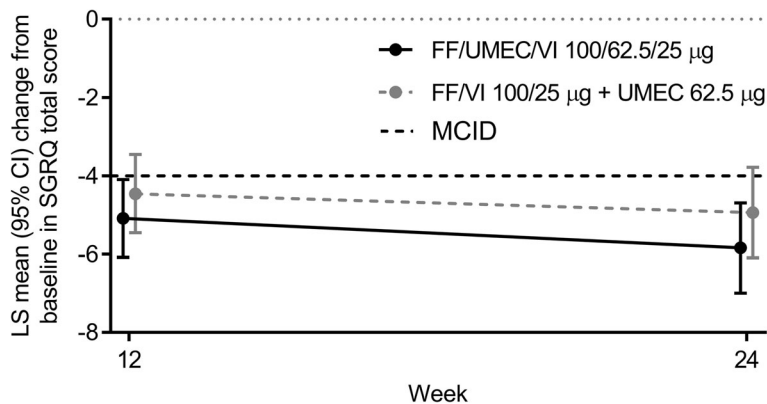


**Fig. 2** Mean change from baseline in trough FEV<sub>1</sub> over 24 weeks in **a**: the mPP population and **b**: the ITT population

FF/UMEC/VI and  $-4.9$  (95% CI  $-6.1, -3.8$ ) for FF/VI + UMEC; the between-treatment difference was  $-0.9$  (95% CI  $-2.5, 0.7$ ) (Fig. 3). The proportion of responders based on TDI focal score at Week 24 was the same for FF/UMEC/VI and FF/VI + UMEC (56% in each group; OR of response versus non-response for FF/UMEC/VI versus FF/VI + UMEC was  $0.95$  [95% CI  $0.72, 1.25$ ]). The

mean TDI focal score at Week 24 was  $2.0$  (95% CI  $1.8, 2.3$ ) for FF/UMEC/VI and  $1.9$  (95% CI  $1.6, 2.1$ ) for FF/VI + UMEC; the between-treatment difference was  $0.1$  (95% CI  $-0.2, 0.5$ ).

A similar proportion of patients (ITT population) experienced a moderate/severe exacerbation in the FF/UMEC/VI group (24%) and FF/VI + UMEC group (27%)



**Fig. 3** Mean change from baseline in SGRQ Total score over 24 weeks (ITT population)

(Table 2). The hazard ratio for time to first on-treatment moderate/severe exacerbation with FF/UMEC/VI versus FF/VI + UMEC was 0.87 (95% CI 0.68, 1.12) (Fig. 4).

**Safety**

The proportion of patients who experienced at least one AE was comparable between both treatment groups (48%); the proportion of patients who had at least one SAE was 10% in the FF/UMEC/VI group and 11% in the FF/VI + UMEC group (Table 3). The most frequent AEs were viral upper respiratory tract infection (FF/UMEC/VI, 11%; FF/VI + UMEC, 10%), headache (6% in each group), and COPD (FF/UMEC/VI, 4%; FF/VI + UMEC, 6%). The incidence of AESIs was similar between the treatment groups, including pneumonia (FF/UMEC/VI, 3%; FF/VI + UMEC, 4%) and cardiovascular events (FF/UMEC/VI, 6%; FF/VI + UMEC, 5%) (Table 3).

**Discussion**

This study aimed to evaluate an important clinical outcome in patients with COPD following treatment with the same three individual component molecules administered using either a single inhaler or two inhalers. While this appears to be scientifically self-evident, this was the first study to specifically demonstrate non-inferiority of a single-inhaler triple pharmacologic regimen to the same treatments delivered using multiple inhalers.

This study showed that single-inhaler FF/UMEC/VI 100 µg/62.5 µg/25 µg is non-inferior to FF/VI 100 µg/25 µg plus UMEC 62.5 µg using two inhalers based on change from baseline in trough FEV<sub>1</sub> at Week 24. The non-inferiority margin for the lower 95% confidence limit was set at - 50 mL, which is half the MCID for trough FEV<sub>1</sub> in COPD [17]. The proportions of responders based on SGRQ Total score and TDI focal

score, and the time to first on-treatment moderate/severe exacerbation, were similar between the treatment groups. As expected, the incidence of AEs, SAEs, and AESIs was comparable for FF/UMEC/VI and FF/VI + UMEC; the incidence of pneumonia AESI was 3% and 4% for FF/UMEC/VI and FF/VI + UMEC, respectively. These results demonstrate that the efficacy and safety of single-inhaler FF/UMEC/VI are similar to the same treatments delivered using two inhalers in patients with COPD. Our findings are supported by previous research, which showed that the systemic exposure to FF, UMEC, and VI following administration as a single-inhaler combination is similar to that observed with the dual therapies FF/VI and UMEC/VI [18].

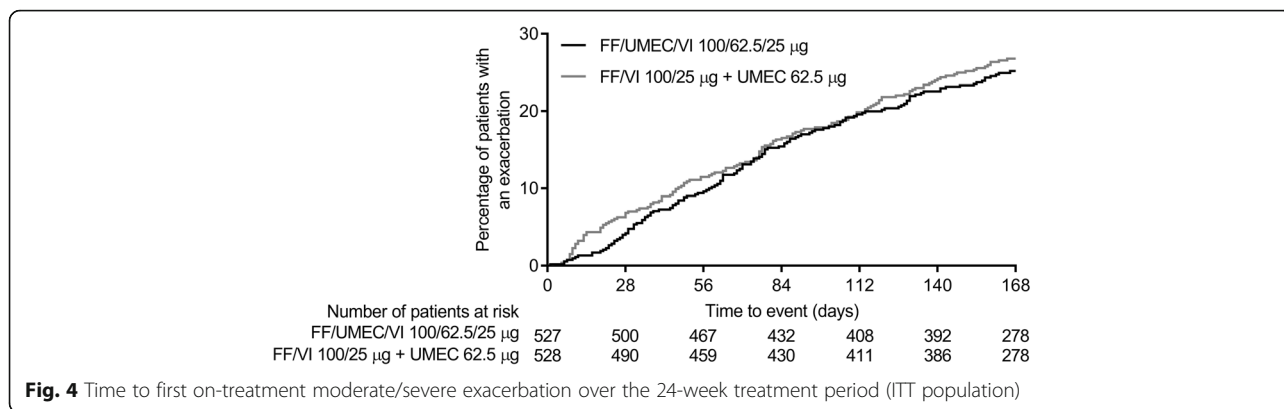
The mean change from baseline in trough FEV<sub>1</sub> at Week 24 with FF/VI/UMEC in the ITT population in the current study (107 mL) is lower than the change from baseline reported with FF/UMEC/VI in the ITT population in the FULFIL study at 24 weeks (142 mL) [10]. This likely reflects the fact that 80% of the enrolled population in the current study used dual, triple, or quadruple combination therapies at baseline. Nevertheless, this reduced level of improvement in lung function was associated with a clinically meaningful improvement from baseline in SGRQ Total score at Week 24 of -5.8 units, which is consistent with the -6.6-unit change reported with FF/UMEC/VI in the FULFIL study [10]. It should also be noted that the mean improvement from baseline in trough FEV<sub>1</sub> at Week 24 with FF/VI/UMEC in the ITT population in the current study was 26 mL (95% CI -2, 53) greater than that observed with FF/VI + UMEC using two inhalers. This indicates some potential for greater consistency in the bronchodilator effect for the single-inhaler combination across all patients, compared with the two-inhaler regimen.

Our findings are also in line with a previous 52-week study comparing twice-daily, single-inhaler BDP/FOR/GB triple therapy with twice-daily BDP/FOR plus tiotropium using multiple inhalers, which showed non-inferiority for the single-inhaler formulation based on change from baseline in pre-dose FEV<sub>1</sub> (between-treatment difference: -3 mL [95% CI -33, 27]) [12]. The incidence of AEs and SAEs with FF/UMEC/VI observed in this study (48% and 10%, respectively) was higher than the incidences observed with FF/UMEC/VI in the FULFIL trial (39% and 5%, respectively). The current study was designed to recruit a population with higher disease burden and exacerbation risk, compared to the population recruited to the FULFIL trial [10], which likely accounts for the differences seen in adverse event reporting between the two studies. These differences are therefore not considered to be clinically relevant. The incidence of pneumonia AESI in the FF/UMEC/VI group in the current study was relatively low (3%) despite 16% of

**Table 2** Summary of on-treatment COPD exacerbations (ITT population)

	F/UMEC/VI 100/62.5/25 µg (N = 527)	FF/VI 100/25 µg + UMEC 62.5 µg (N = 528)
Patients with a mild, moderate or severe exacerbation, n (%)	134 (25)	145 (27)
Mild	8 (2)	5 (< 1)
Moderate	111 (21)	118 (22)
Severe	22 (4)	31 (6)
Moderate/Severe	129 (24)	142 (27)
Number of moderate/severe exacerbations, n (%)		
0	398 (76)	386 (73)
1	105 (20)	111 (21)
≥ 2	24 (5)	31 (6)

COPD chronic obstructive pulmonary disease, FF fluticasone furoate, ITT intent-to-treat, SD standard deviation, UMEC umeclidinium, VI vilanterol



**Table 3** Overview of safety findings (ITT population)

Category, n (%)	FF/UMEC/VI 100/62.5/25 µg (N = 527)	FF/VI 100/25 µg + UMEC 62.5 µg (N = 528)
On-treatment AEs	255 (48)	253 (48)
On-treatment drug-related AEs	27 (5)	19 (4)
On-treatment SAEs	52 (10)	57 (11)
On-treatment non-fatal SAEs	50 (9)	54 (10)
On-treatment fatal SAEs	4 (< 1)	4 (< 1)
On-treatment AESIs <sup>a</sup>		
Adrenal suppression	1 (< 1)	0
Anticholinergic syndrome	12 (2)	5 (< 1)
Cardiovascular events	30 (6)	28 (5)
Cardiac arrhythmia	6 (1)	8 (2)
Cardiac failure	7 (1)	7 (1)
Ischemic heart disease	6 (1)	3 (< 1)
Hypertension	10 (2)	13 (2)
CNS hemorrhage/cerebrovascular conditions	3 (< 1)	1 (< 1)
Decreased bone mineral density and associated fractures	5 (< 1)	6 (1)
Hyperglycemia/new-onset diabetes mellitus	7 (1)	6 (1)
Hypersensitivity	7 (1)	9 (2)
LRTI excluding pneumonia	16 (3)	11 (2)
Local steroid effects	12 (2)	14 (3)
Ocular effects	4 (< 1)	5 (< 1)
Pneumonia	14 (3)	21 (4)
Tremor	1 (< 1)	0

AE adverse event, AESI adverse event of special interest, CNS central nervous system, FF fluticasone furoate, ITT intent-to-treat, LRTI lower respiratory tract infection, SAE serious adverse event, SD standard deviation, UMEC umecclidinium, VI vilanterol

<sup>a</sup>No events were reported for the asthma/bronchospasm, effects on potassium, gastrointestinal obstruction, or urinary retention AESI groups

patients enrolled in this group having a history of pneumonia.

A once-daily, single-inhaler treatment regimen offers a simplified dosing option that may provide a number of benefits to patients with COPD, such as reducing the number of obligatory co-pays in markets where patients are required to subsidize the cost of their medicines. A single-inhaler regimen may also help to ensure that the prescribed combination is delivered consistently and reduce the risk of inhaler errors [19–21]. This may improve patient adherence and outcomes, and reduce associated healthcare costs. However, in the current study, patients in both groups received their assigned study treatment using double-dummy blind inhalers, and so we were unable to directly assess the impact on adherence of a simplified single-inhaler triple therapy regimen versus the same treatments delivered using two inhalers. Nevertheless, as numerical treatment differences in favor of FF/VI/UMEC versus UMEC+FF/VI were consistently observed in the ITT population for both mean change from baseline in FEV<sub>1</sub> and SGRQ total score, it is possible that a more pragmatic, real-world efficacy study might demonstrate such efficacy benefits.

Our results are specific to FF/UMEC/VI administered using the ELLIPTA inhaler, so similar clinical findings may not be observed when different molecules or inhaler devices are combined. Another study limitation was the lack of a control group receiving dual ICS/LABA or LAMA/LABA therapy, although a dual therapy control group was included in the FULFIL and forthcoming IMPACT trials [10, 22]. A potential study strength was that 80% of enrolled patients continued their existing dual, triple or quadruple combination therapies during the 2-week run-in period, and 67% continued to remain at high risk of exacerbations. This meant that the study population more closely resembled a real-world COPD population who may benefit most from the simplicity afforded by a once-daily, single-inhaler triple therapy regimen.

## Conclusions

This study showed that single-inhaler FF/UMEC/VI 100 µg/62.5 µg/25 µg was non-inferior to FF/VI 100 µg/25 µg plus UMEC 62.5 µg based on change from baseline in trough FEV<sub>1</sub> at Week 24 in patients with advanced COPD. Our findings confirm that single-inhaler triple therapy with FF/UMEC/VI offers similar efficacy, health-related quality of life, and safety benefits as the same triple therapy administered using two inhalers.

## Abbreviations

AE: Adverse event; AESI: Adverse event of special interest; BDP: Beclomethasone dipropionate; CAT: COPD Assessment Test™; CI: Confidence interval; CNS: Central nervous system; COPD: Chronic obstructive pulmonary disease; FEV<sub>1</sub>: Forced expiratory volume in 1 s; FF: Fluticasone furoate; FOR: Formoterol; FVC: Forced vital capacity; GB: Glycopyrronium bromide; GOLD: Global initiative for chronic obstructive lung disease; ICS: Inhaled corticosteroid; ITT: Intent-to-treat; LABA: Long-acting β<sub>2</sub>-agonist; LAMA: Long-acting muscarinic antagonist; LRTI: Lower respiratory tract infection; MCID: Minimal clinically important difference; MMRM: Mixed model repeated measures; mPP: Modified per-protocol; OR: Odds ratio; SAE: Serious adverse event; SD: Standard deviation; SGRQ: St George's respiratory questionnaire; TDI: Transitional dyspnea index; UMEC: Umeclidinium; VI: Vilanterol

## Acknowledgments

We would like to thank the patients and their families who participated in this study, and the study investigators and their staff. We also thank Helen Barnacle (senior scientist for this study), Niki Day (GSK Pharmacovigilance), and Erik Steinberg (GSK Data Quality Leader). Medical writing support in the form of development of the draft outline and manuscript drafts in consultation with the authors, editorial suggestions to draft versions of this paper, assembling tables and figures, collating author comments, copyediting, referencing and graphic services was provided by Thomas Burton, BMBS, of Gardiner-Caldwell Communications, Macclesfield, UK and was funded by GSK.

## Funding

This study was funded by GSK (GSK study CTT200812; ClinicalTrials.gov identifier NCT02729051). ELLIPTA is owned by or licensed to the GSK group of companies.

## Availability of data and materials

The datasets used and/or analyzed during the current study are available from the corresponding author on reasonable request.

## Authors' contributions

Literature search: DAL, NB. Study design: DAL, NB, RB, CQZ. Data collection: PRB. Data analysis: DAL, NB, RB, ASI, CQZ. Data interpretation: all authors. Writing/reviewing of the manuscript: all authors. Final approval of the manuscript: all authors.

## Ethics approval and consent to participate

The protocol was approved by applicable institutional review boards/ethics committees at each participating site, and was conducted in accordance with applicable regulatory requirements, ICH Good Clinical Practice guidelines, and the guiding principles of the Declaration of Helsinki. All patients provided written, informed consent prior to enrollment.

## Consent for publication

Not applicable.

## Competing interests

RB, NB, ASI, C-QZ, and DAL are employees of GSK and hold stocks/shares in the company. ASI is also an unpaid faculty member at McMaster University, Canada. PRB has no conflicts of interest to disclose.

## Publisher's Note

Springer Nature remains neutral with regard to jurisdictional claims in published maps and institutional affiliations.

## Author details

<sup>1</sup>University of Notre Dame, Fremantle, WA, Australia. <sup>2</sup>GSK, Stockley Park West, Uxbridge, Middlesex, UK. <sup>3</sup>GSK, Collegeville, PA, USA. <sup>4</sup>Department of Health Research Methods, Evidence and Impact, McMaster University, Hamilton, ON, Canada. <sup>5</sup>GSK, 709 Swedeland Road, UW2531, King of Prussia, PA 19406, USA. <sup>6</sup>Perelman School of Medicine, University of Pennsylvania, Philadelphia, PA, USA.

Received: 7 November 2017 Accepted: 16 January 2018

Published online: 25 January 2018

## References

- Global Initiative for Chronic Obstructive Lung Disease. Global strategy for the diagnosis, management and prevention of COPD 2017. <http://goldcopd.org/gold-2017-global-strategy-diagnosis-management-prevention-copd/>. Accessed 27 June 2017.
- Wurst KE, Punekar YS, Shukla A. Treatment evolution after COPD diagnosis in the UK primary care setting. *PLoS One*. 2014;9:e105296.
- Simeone JC, Luthra R, Kaila S, Pan X, Bhagnani TD, Liu J, et al. Initiation of triple therapy maintenance treatment among patients with COPD in the US. *Int J Chron Obstruct Pulmon Dis*. 2017;12:73–83.
- Aaron SD, Vandemheen KL, Fergusson D, Maltais F, Bourbeau J, Goldstein R, et al. Tiotropium in combination with placebo, salmeterol, or fluticasone-salmeterol for treatment of chronic obstructive pulmonary disease: a randomized trial. *Ann Intern Med*. 2007;146:545–55.
- Welte T, Miravittles M, Hernandez P, Eriksson G, Peterson S, Polanowski T, et al. Efficacy and tolerability of budesonide/formoterol added to tiotropium in patients with chronic obstructive pulmonary disease. *Am J Respir Crit Care Med*. 2009;180:741–50.
- Hanania HA, Crater GD, Morris AN, Emmett AH, O'Dell DM, Niewoehner DE. Benefits of adding fluticasone propionate/salmeterol to tiotropium in moderate to severe COPD. *Resp Med*. 2012;106:91–101.
- Jung KS, Park HY, Park SY, Kim SK, Kim YK, Shim JJ, et al. Korea chronic obstructive pulmonary disease study group. Comparison of tiotropium plus fluticasone propionate/salmeterol with tiotropium in COPD: a randomized controlled study. *Resp Med*. 2012;106:382–9.
- Siler TM, Kerwin E, Tombs L, Fahy WA, Naya I. Triple therapy of umeclidinium + inhaled corticosteroids/long-acting beta2 agonists for patients with COPD: pooled results of randomized placebo-controlled trials. *Pulm Ther*. 2016;2:43–58.
- Lee SD, Xie CM, Yunus F, Itoh Y, Ling X, Yu WC, et al. Efficacy and tolerability of budesonide/formoterol added to tiotropium compared with tiotropium alone in patients with severe or very severe COPD: a randomized, multicentre study in East Asia. *Respirology*. 2016;21:119–27.
- Lipson DA, Barnacle H, Birk R, Brealey N, Locantore N, Lomas DA, et al. FULFIL trial: once-daily triple therapy for patients with chronic obstructive pulmonary disease. *Am J Respir Crit Care Med*. 2017;196:438–46.
- Singh D, Papi A, Corradi M, Pavlišová I, Montagna I, Francisco C, et al. Single inhaler triple therapy versus inhaled corticosteroid plus long-acting β<sub>2</sub>-agonist therapy for chronic obstructive pulmonary disease (TRIOLOGY): a double-blind, parallel group, randomised controlled trial. *Lancet*. 2016;388:963–73.
- Vestbo J, Papi A, Corradi M, Blazhko V, Montagna I, Francisco C, et al. Single inhaler extrafine triple therapy versus long-acting muscarinic antagonist therapy for chronic obstructive pulmonary disease (TRINITY): a double-blind, parallel group, randomised controlled trial. *Lancet*. 2017;389:1919–29.
- Jones PW, Harding G, Berry P, Wiklund I, Chen WH, Kline LN. Development and first validation of the COPD assessment test. *Eur Respir J*. 2009;34:648–54.
- Jones PW, Harding G, Wiklund I, Berry P, Tabberer M, Yu R, et al. Tests of the responsiveness of the COPD assessment test following acute exacerbation and pulmonary rehabilitation. *Chest*. 2012;142:134–40.
- Miller MR, Hankinson J, Odencrantz J. Standardisation of spirometry. *Eur Respir J*. 2005;26:319–88.
- Meguro M, Barley EA, Spencer S, Jones PW. Development and validation of an improved COPD-specific version of the St. George respiratory questionnaire. *Chest*. 2007;132:456–63.
- Donahue JF. Minimal clinically important differences in COPD lung function. *COPD*. 2005;2:111–24.
- Brealey N, Gupta A, Renaux J, Mehta R, Allen A, Henderson A. Pharmacokinetics of fluticasone furoate, umeclidinium, and vilanterol as a triple therapy in healthy volunteers. *Int J Clin Pharmacol Ther*. 2015;53:753–64.

19. Chrystyn H, van der Palen J, Sharma R, Barnes N, Delafont B, Mahajan A, et al. Device errors in asthma and COPD: systematic literature review and meta-analysis. *NPJ Prim Care Respir Med*. 2017;27:22.
20. Horsley MG, Bailie GR. Risk factors for inadequate use of pressurised aerosol inhalers. *J Clin Pharmacol Ther*. 1988;13:139–43.
21. De Blaquiere P, Christensen DB, Carter WB, Martin TR. Use and misuse of metered-dose inhalers by patients with chronic lung disease. A controlled, randomized trial of two instruction methods. *Am Rev Respir Dis*. 1989;140:910–6.
22. Pascoe SJ, Lipson DA, Locantore N, Barnacle H, Brealey N, Mohindra R, et al. A phase III randomised controlled trial of single-dose triple therapy in COPD: the IMPACT protocol. *Eur Respir J*. 2016;48:320–30.

Submit your next manuscript to BioMed Central and we will help you at every step:

- We accept pre-submission inquiries
- Our selector tool helps you to find the most relevant journal
- We provide round the clock customer support
- Convenient online submission
- Thorough peer review
- Inclusion in PubMed and all major indexing services
- Maximum visibility for your research

Submit your manuscript at  
[www.biomedcentral.com/submit](http://www.biomedcentral.com/submit)

