

Masthead Logo

University of Iowa
Iowa Research Online

Publications from The Office of the State
Archaeologist

Office of the Vice President for Research

3-2011

Office of the State Archaeologist, The University of Iowa, Annual Report for Fiscal Year 2010

Office of the State Archaeologist, University of Iowa

Follow this and additional works at: https://ir.uiowa.edu/osa_pubs

Part of the [Archaeological Anthropology Commons](#)

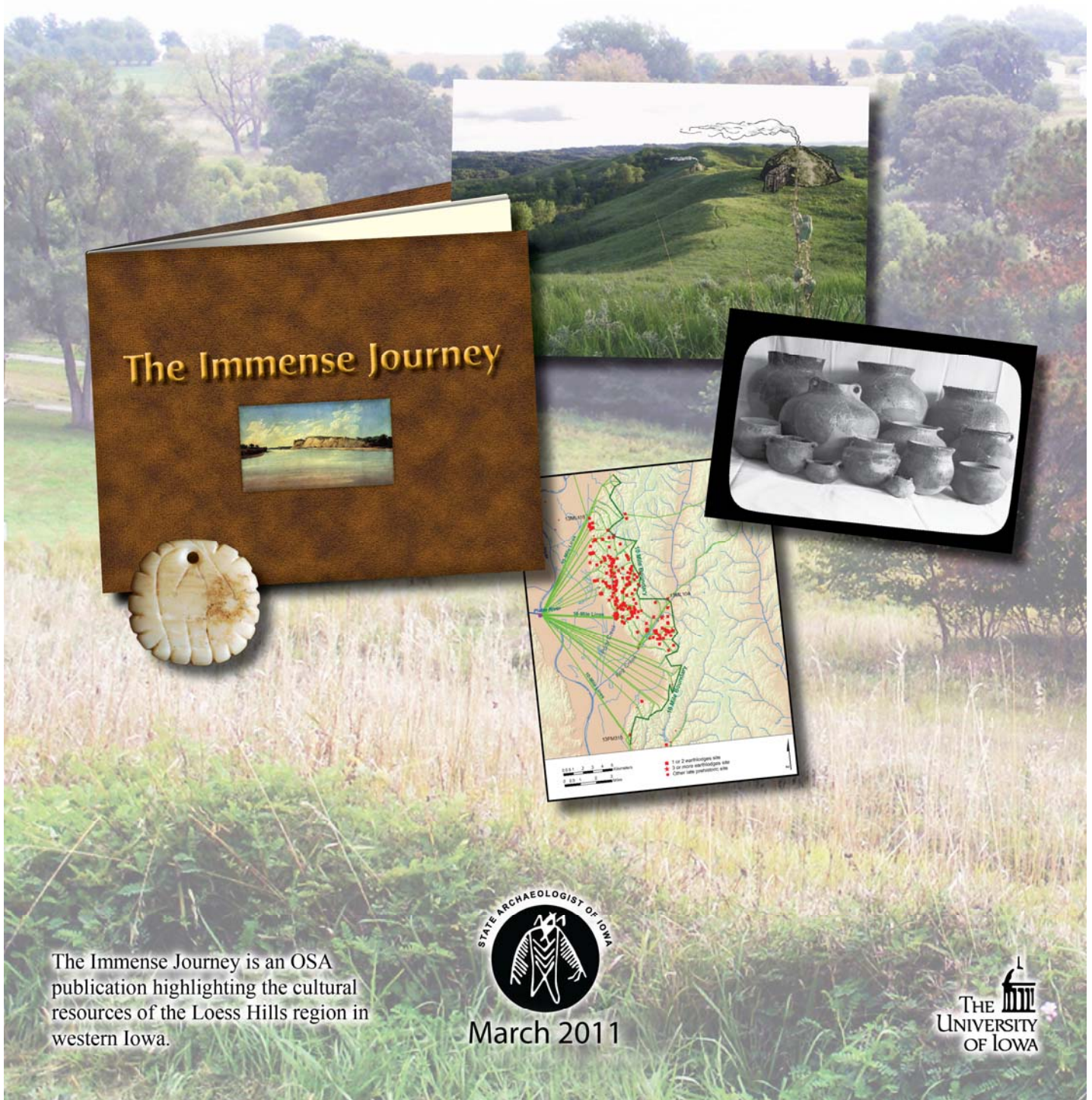
Recommended Citation

Office of the State Archaeologist, University of Iowa, "Office of the State Archaeologist, The University of Iowa, Annual Report for Fiscal Year 2010" (2011). *Publications from The Office of the State Archaeologist*. 23.
https://ir.uiowa.edu/osa_pubs/23

This Annual Report is brought to you for free and open access by the Office of the Vice President for Research at Iowa Research Online. It has been accepted for inclusion in Publications from The Office of the State Archaeologist by an authorized administrator of Iowa Research Online. For more information, please contact lib-ir@uiowa.edu.

Office of the State Archaeologist The University of Iowa

Annual Report for Fiscal Year 2010



The Immense Journey is an OSA publication highlighting the cultural resources of the Loess Hills region in western Iowa.



March 2011



Cover: For much of FY 2010 staff members from several OSA programs collaborated on a grant-funded project assisting Golden Hills RC&D with their endeavor to upgrade the status of the Loess Hills National Scenic Byway to the elite “All-American Road” category. While this process is not yet complete, OSA’s involvement successfully resulted in confirmation of the intrinsic quality of the Loess Hills archaeological resources, collection of significant new archaeological data, and generation of several valuable outreach products including preparation of *The Immense Journey*. Three thousand copies of this richly illustrated, full color, 46-page booklet have been distributed to the public, mostly in western Iowa, to inform them about the archaeological significance of the Loess Hills and its Scenic Byway.

Contents

	Page
List of Figures	ii
List of Tables	ii
The Office of the State Archaeologist	1
Mission	1
Student Success	1
Achievements	1
Strengths and Resources	1
Annual Report for Fiscal Year 2010: Overview	2
The Year in Review	3
Academic Achievements	3
Field Services Division	3
Education and Outreach Program	3
Research Division	6
Burials Program	6
Contract Services Division	7
General Contracts Program	7
Highway Archaeology Program	8
General Services Division	9
Curation Services Program	9
Documents Collection Program	9
Geospatial Program	10
Information Technology Program	12
Publications Division	12
International Endeavors	12
Staff Leadership Service and Awards	13
Review of Fiscal Year 2010 Annual Work Plan Accomplishments	14
Summary	15
Fiscal Year 2011: Plans and Prospects	16
Acknowledgements	17
Budget for Fiscal Year 2010	18
Appendices	
A. Office of the State Archaeologist Strategic Plan: 2010–2016	28
B. Public Presentations, Fiscal Year 2010	31
C. Papers Presented at Professional Meetings, Fiscal Year 2010	34
D. Publications Appearing in Print, Fiscal Year 2010	36
E. Service as a Board, Commission, or Committee Member, Fiscal Year 2010	37
F. Scientific Publications Produced by the Office of the State Archaeologist, Fiscal Year 2010	40

List of Figures

	Page
1. Office of the State Archaeologist funding levels, Fiscal Years 1987–2010	19
2. Comparison of UI General Education funding (GEF) allocation with Facilities and Administrative (F&A) costs generated for UI through OSA grant and contract activity, Fiscal Years 1996–2010	19
3. Organizational Chart for the Office of the State Archaeologist, Fiscal Year 2010	27

List of Tables

1. Office of the State Archaeologist Budgets, Fiscal Years 1987–2010	20
2. University of Iowa General Education Fund Support for OSA Operations, Fiscal Year 2010	21
3. Research Incentive and Other University of Iowa Non-General Education Fund Support for OSA Operations, Fiscal Year 2010	21
4. Funding Received from Fees and Contributions, Fiscal Year 2010	21
5. Funding Received for Sponsored Research and Services, Fiscal Year 2010	22
6. Permanent Staff Members, Fiscal Year 2010	24
7. Complete Roster of Employees, Fiscal Year 2010	25
8. Students Participating in OSA Activities, Fiscal Year 2010	26

Office of the State Archaeologist The University of Iowa Annual Report for Fiscal Year 2010

The Office of the State Archaeologist

MISSION

The mission of the Office of the State Archaeologist (OSA) is to develop, disseminate, and preserve knowledge of Iowa's human past through Midwestern and Plains archaeological research, scientific discovery, public stewardship, service, and education. The position of State Archaeologist was established in 1959. State law requires the State Archaeologist to be a faculty member in the Department of Anthropology at the University of Iowa (UI). Additionally, the OSA is an organized research unit of the University, meaning that the State Archaeologist, who is appointed by the Iowa State Board of Regents, heads the OSA and reports to the University's Vice President for Research and Economic Development. The State Archaeologist consults regularly with the OSA Advisory Committee, whose members include on- and off-campus colleagues, and with the OSA Indian Advisory Council, whose members include individuals from several tribes.

STUDENT SUCCESS

In addition to its statutory responsibilities, the OSA actively supports the academic mission of the UI. Various OSA staff, as adjunct faculty in the UI's Department of Anthropology, offer courses in anthropology and archaeology, mentor honor students and student interns, and serve on Ph.D. and M.A. degree committees. The OSA actively supports the use by UI undergraduate and graduate students of its archaeological, osteological, and comparative collections; scholarly documents; electronic databases; scientific instrumentation; and laboratory space for degree-related research. These resources fulfill the needs of students in the departments of Anatomy and

Cell Biology, Anthropology, Dentistry, Geography, Geoscience, History, and Radiology along with the programs of American Indian and Native Studies and Museum Studies. The OSA also regularly hosts visits from UI classes, offers classes in its laboratory-multimedia facility, employs work-study students majoring in a wide variety of disciplines, and supports career-building volunteering research opportunities for students.

ACHIEVEMENTS

Over the past half century, the OSA and its staff members have published thousands of articles, monographs, research reports, and abstracts on Iowa archaeology. Staff members also have presented thousands of public programs throughout the state. The OSA has conducted archaeological and architectural history research in all counties on sites of all types and time periods, supported by contracts, interagency agreements, grants, and field schools. The OSA coordinates all work pertaining to ancient burials in Iowa, in accordance with the landmark 1976 state law on protection and reburial of human remains. In addition, the OSA is the central data manager for all recorded Iowa archaeological sites, the central repository for Iowa archaeological collections, and coordinator of the Iowa avocational certification program.

STRENGTHS AND RESOURCES

The core strengths of the OSA are:

- a highly experienced and motivated staff,
- ready accessibility for UI undergraduates as well as other students at all levels,
- a tradition of high-quality work,

- excellent relations with other state agencies and University offices, and
- extensive, accessible collections and other research and service resources.

The OSA's most important resource is its staff, a dynamic and highly qualified team that represents hundreds of years of experience in Midwest and Plains archaeology and cultural resource management. The full-time staff currently includes four individuals with Ph.D.s and an additional 18 with Master's degrees. Part-time staff members have extensive archaeological experience; most have participated in at least one field

school and completed a Bachelor's or Master's degrees in anthropology or related field.

The OSA occupies a renovated 13,000-square-foot facility located in the Clinton Street Building (CLSB) on the south side of the main University of Iowa campus. The University directly supports OSA's general administration, Education and Outreach and Burials programs, and contributes to site records, documents, and collections management activities. Typically, 85 percent or more of the OSA activities, including most of its field research, are supported by external, non-University funding through contracts, grants, gifts, and fee-for-service arrangements.

Annual Report for Fiscal Year 2010: Overview

The OSA conducted a wide range of research, service, and educational programs and activities during fiscal year (FY) 2010. As noted previously, the mission of the OSA is to develop, disseminate, and preserve knowledge of Iowa's human past through Midwestern and Plains archaeological research, scientific discovery, public stewardship, service, and education. Statutory authorization and administrative rules establish basic OSA functions, organization, and procedures (Code of Iowa 263B, Iowa Administrative Code 685). OSA administrative rules organize the office into five divisions: Field Services, Research, Contract Services, General Services, and Publications. The OSA utilizes the Management by Objective (MBO) approach to focus effort on high priority research, education, and public service projects related to overall office goals as defined by statute and strategic planning.

In 2010 the OSA updated its strategic plan to specify the means to accomplish major goals and guide activities through 2016 (Appendix A). OSA programs and staff activities strive to meet these broad, strategic goals:

1. Create a learning experience about the human past that enriches the lives of undergraduates and helps them to become well-

informed individuals, lifelong learners, engaged citizens, and productive employees and employers.

2. Promote graduate and professional student participation in OSA research through cooperation with University graduate and professional programs.
3. Strengthen and expand OSA partnerships with public constituencies to advance understanding and appreciation about the human past and stewardship of archaeological resources and showcase the societal benefits of archaeological research and teaching for the citizens of Iowa.
4. Recognize and illuminate the human diversity inherent in the past as manifested in the archaeological record and use that record for greater inclusion and participation of professionals and the public.
5. Strengthen the OSA's intellectual and cultural vitality within the University, Iowa, nationally, and internationally.

As a UI department and the focal point for Iowa archaeology, the OSA is active throughout the year and around the state. The following section describes highlights of the activities for FY 2010.

The Year in Review

ACADEMIC ACTIVITIES

During FY 2010, four OSA staff members served as adjunct faculty in the UI Department of Anthropology—John Doershuk, Stephen Lensink, Melody Pope, and Shirley Schermer. Pope taught the UI Anthropology course, *Lithic Analysis in Archaeology* during the spring 2010 semester to 13 students. Doershuk also served as adjunct faculty in Anthropology at Cornell College, Mt. Vernon, Iowa. Doershuk taught the Cornell course, *Archaeology*, to 24 students during May 2010. Doershuk, Pope, and Lensink co-taught a UI First-year Seminar (FYS) during the fall 2009 semester entitled, *Applied Archaeology: Saving the Past for the Future*; six students participated. The UI FYS course was taught in the main laboratory of the OSA's facility. Schermer contributed guest lectures to two UI Anthropology courses, *Forensics and CSI* and *The Archaeology of Death* as well as to the FYS. Other OSA staff members (Lynn Alex, Mark Anderson, John Cordell, John Hedden, and Cindy Peterson) also participated in the FYS as guests or mentors, as did Department of Anthropology faculty member Margaret Beck. Lastly, OSA Osteologist Robin Lillie provided a presentation to a UI Museum Studies course.

OSA staff also undertook the mentoring of UI graduate and honors students, and the OSA provided them with resources for their degree research. Doershuk and Pope served on the Ph.D. committee for Bryan Kendall, whose research focuses on Woodland period adaptations, especially in northeast Iowa, and utilizes OSA site record data and artifact collections. Both Doershuk and Shirley Schermer served on the M.A. committee for Christopher Kimsey whose research used artifacts from the OSA's Dubuque cemetery project; Kimsey graduated spring 2010 after successfully defending his M.A. paper. Doershuk also served on the M.A. committee for Sarah Trabert, who worked on a ceramics analysis of sherds from two late prehistoric sites near Glenwood, Iowa. Trabert is continuing in the UI Anthropology Ph.D. program after her successful May, 2010 defense of her M.A. paper.

The OSA facilities, collections, and staff provided classroom enrichment for undergraduate students. Pope and OSA staff member Colleen Eck hosted the UI Geography class, *Environmental Impact Analysis* (35 students, April 2010). Robin Lillie provided a tour of the Burials Program laboratory for a UI Museum Studies class, *Advance Collections Care and Management* (10 students, spring 2010). Michael Perry provided an in-depth overview of Midwestern ceramics for Margaret Beck's *Introduction to Archaeological Ceramics* course (12 students, spring 2010).

A total of 29 students from the UI; Cornell, Luther, and Grinnell colleges; the University of Northern Iowa; and Kirkwood Community College were involved in various OSA archaeological activities over the course of the fiscal year (see Table 8). These included ten students who were using OSA resources to complete degree requirements. Of these, two were Ph.D. candidates pursuing dissertation research. Nineteen students were employed in a work-study capacity, and seven students volunteered to assist with OSA-sponsored research.

FIELD SERVICES DIVISION

Education and Outreach Program

The Education and Outreach Program (EOP) provides resources and opportunities that encourage an understanding, appreciation, and stewardship of Iowa's archaeological past. A goal of the EOP is to expand partnerships with organizations and agencies across Iowa to better maximize OSA's mission to strengthen heritage education. The EOP's efforts are guided by a series of enduring understandings directly linked to OSA's current strategic plan goals 3 and 4:

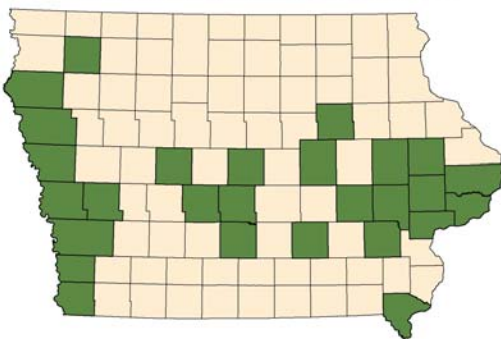
1. Everyone has a culture and all cultures have value.
2. Respectful understanding of diverse cultures, past and present, is essential for living in a pluralistic society and world.

3. Understanding the human past is essential for understanding the present and shaping the future.
4. Archaeology is one of multiple ways to learn about the human past.
5. Archaeology advances understanding and appreciation of human diversity over time.
6. The Midwestern-Iowa setting contains a long, rich record of human occupation inter-related and relevant to the wider human experience.
7. Stewardship of archaeological resources is everyone's responsibility.

In FY 2010, external financial support for the EOP totaling \$20,542.04 (\$14,693.33 grants, \$630.24 contracts, \$2,218.47 fees, and \$3,000.00 contributions) was garnered from public and private organizations. External funding supported part-time assistance by OSA staff including Chérie Haury-Artz, Eleisha Barnett, Elizabeth Fox, John Hall, Daniel Horgen, Alan Hawkins, Tricia Bender, Kevin Verhulst, John Hedden, and Kourtney Donohue on behalf of the EOP. Other OSA programs also provide valuable financial and staff support to EOP projects.

The EOP's endeavors directly reached a public audience estimated at over 10,000 people with face-to-face interactions (Appendix B). Consultations, tours, and job-shadowing opportunities also attracted 1,135 visitors to OSA. The EOP content on the OSA website remains a vigorous, interactive conduit between the public and OSA through the efforts of webmaster Mary De La Garza and part-time OSA staff member Tricia Bender. The OSA web pages received an estimated 1,500 hits per month in FY 2010 (see

Location of public presentations FY 2009 (Appendix B)



www.uiowa.edu/~osa). Social networking sites, including Facebook and Twitter, are increasingly becoming venues for OSA program information dissemination.

Highlights of the EOP for FY 2010 include:

- *Iowa Archaeology Month 2009: Iowa Archaeology on the Road Again...*
- Completion and roll out of the *Crops of Ancient Iowa* web pages and gallery funded by a Silos and Smokestacks National Heritage Area grant.
- Completion of "The Immense Journey: Loess Hills Cultural Resources Study," a public-friendly booklet describing the results of OSA's recent Loess Hills Cultural Resources project.
- Teacher workshop at the Herbert Hoover Presidential Library, West Branch.
- Collections management assistance was provided to the Humboldt County Historical Museum by OSA archaeologist Mike Perry for the Russ Campbell Collection.

Iowa Archaeology Month (IAM) remains OSA's premier outreach endeavor, and has received Humanities Iowa funding support for more than a decade. For a second year, IAM took word of Iowa's archaeological heritage to communities and riders along the route of the Des Moines Register's Annual Great Bike Ride across Iowa (RAGBRAI), July 18–24, 2009. The OSA utilized RAGBRAI as a vehicle for educating the general public about Iowa archaeology and early Native American history. A very strong web presence and three additional venues including Hooverfest at the Herbert Hoover National Historic Site (August 1), the Meskwaki Nation powwow at Tama (August 7–8), and the Iowa State Fair in Des Moines (August 23), were incorporated into IAM 2009. At the RAGBRAI Expo kickoff event in Council Bluffs, at three pass-through communities along the route—Henderson, Moravia, and Packwood—and while riding each day, "Team Archaeology" shared information about Iowa's past



and distributed the IAM 2009 informational brochure and promotional wristbands to thousands of riders and community members. As part of this endeavor, 7,500 Iowa Archaeology Month 2009 posters, 2,000 brochures, and 10,000 promotional wristbands imprinted with "Iowa Archaeology," were prepared and offered at venues across the state. The Iowa Archaeology Month 2009 (IAM) web pages, which offer substantive information and images about Iowa archaeology, had 1,524 visits between April and August, 2009.

In September, 400 elementary school youngsters and their teachers were introduced to archaeology as part of the annual, two-day "Let's Celebrate Archaeology" event at the State Historical Museum in Des Moines. Participants received some of the promotional materials from IAM 2009 including this year's poster. Two thousand and nine marked the 60th anniversary of Effigy Mounds National Monument (EFMO) and 100 years since the movement to establish the park began. To assist with these commemorations, OSA partnered with EFMO and the State Historical Society of Iowa to create the IAM 2009 poster. Five hundred copies were distributed at the annual Ft. Atkinson Rendezvous the last weekend of September and to school children in the Ft. Atkinson area.

A new web gallery and pages entitled "Crops of Ancient Iowa," funded by a grant from the Silos and Smokestacks National Heritage Area was introduced on the web in FY 2010. The site, http://www.uiowa.edu/~osa/Silos/Crops_of_Ancient_Iowa.html presents the story of early agriculture and crop domestication in Iowa as known from archaeological evidence. The project was prepared with the collaboration of OSA's Geospatial Program.

OSA's two year Loess Hills Cultural Resources study concluded with the production of a substantive report by the General Contracts Program (GCP) and with an illustrated companion piece created for the public entitled "The Immense Journey," compiled and written by the EOP Director. This booklet has been widely distributed and is now into its second printing. The EOP Director also partnered with GCP staff in the preparation and presentation of National Register of Historic Places nomination documents for

the Kimball site, an important late prehistoric Mill Creek culture site in the Loess Hills.

OSA's continuing initiative to further knowledge about the Ioway tribes resulted in a partnership with Fourth Wall Films, an independent film and video production company, and two Iowa City educators to produce a curriculum to accompany the film "Lost Nation: the Ioway." The EOP program introduced the curriculum and presented other resources for the study of Iowa's native people at a teacher's workshop hosted by the Herbert Hoover Presidential Library in November of 2009.

Venues for the dozens of public presentations by OSA staff in FY 2010 (Appendix B) included K-12 schools, Iowa public radio and television, community newspapers, county conservation centers, museums, libraries, county historical organizations, the Belin-Blank Center for Gifted Education and Talent Development, Grant Wood AEA Gifted and Talented Program including College for Kids, the State Historical Museum of Iowa, Price Lab and the Iowa Science and Math Academy at the University of Northern Iowa, and the Iowa Archeological Society and its chapters.

The EOP provided consultation and assistance to educational, historical, cultural, and environmental organizations statewide including: the State Historical Society of Iowa, Sac and Fox Tribe of the Mississippi in Iowa, Ioway Tribe of Kansas and Nebraska, Belle Plaine Area Museum, Sioux City Public Museum, Prairie Heritage Center, Johnson County Historical Society, Loess Hills Prairie Seminar, and the Golden Hills RC&D. OSA staff also provided guest lectures, programming, and assistance to numerous organizations throughout the year (see Appendix B).

EOP presentations were featured at the annual conferences of a number of professional organizations including: the Society for American Archaeology (SAA), Iowa Museum Association, Iowa Science Teachers, and the Iowa Conservation Education Coalition (see Appendix C).

EOP Director Alex completed her tenure on the SAA Public Education Committee, but continues to assist with the SAA's State Network whose national list serve is maintained at OSA. She remains on the Advisory Board for the Mississippi Valley Archaeology Center (MVAC) at

the University of Wisconsin-La Crosse with a particular interest in fostering MVAC's highly successful education program. In FY 2010, she also accepted an appointment to the Iowa State Preserves Advisory Board. Shirley Schermer, OSA Burials Program Director, and Alex continued to serve on "Project Archaeology's" national advisory team. Project Archaeology is an archaeology and heritage education curriculum that has been adopted in 23 states. In FY 2010, EOP assistant, Chérie Haury-Artz, represented Iowa at the annual Project Archaeology Conference in St. Augustine, Florida. Haury-Artz also served as the coordinator for the statewide Iowa Archeological Society amateur certification program.

RESEARCH DIVISION

Burials Program

The Burials Program works closely with Indian tribes, the OSA Indian Advisory Council (IAC), landowners across the state, and a variety of local, state, and federal agencies. Its purpose is to implement state and federally mandated protection of burial sites and examination and disposition of human remains. The Burials Program is the principal point of contact regarding reburial and repatriation in general and the Native American Graves Protection and Repatriation Act (NAGPRA) in particular. Since 1976, when Iowa's burial protection law was passed, the program has handled 2,494 projects in all of Iowa's 99 counties.

The number, type, and timing of new burial projects in any one year can vary greatly. Because of the diverse variables in these projects, each needs to be addressed on a case-by-case basis. The overall goal of the Burials Program is to successfully respond to each of these projects. To meet this goal requires the flexibility to respond as needed to diverse situations. In FY 2010, there were 123 new projects from 56 counties and two unknown locations. In addition, work continued on numerous burial projects from previous years. One of these, an inadvertent disturbance of historic graves in Dubuque in late FY 2007, has continued, involving in 2010 extensive laboratory investigation throughout the year. The majority

of projects dealt with potential or real threats to known or possible burial sites. Thirty site investigations were conducted. One formal OSA IAC meeting was held, as well as frequent consultation throughout the year via email and phone.

A reburial in the Eastern Cemetery was conducted. This reburial followed the Native American Graves Protection and Repatriation Act (NAGPRA) process document that was successfully developed in consultation with 21 tribes with a historic interest in Iowa and approved by the NAGPRA Review Committee and the Secretary of the Interior. The reburied remains were listed in a Federal Register *Notice* published in October 2008. Reburials of other remains listed in this *Notice* were conducted in the northern, southern, and western state cemeteries in spring 2009.

The Burials Program provided assistance to the Iowa Department of Natural Resources (IDNR) in consultation related to probable unassociated funerary objects from the State of Washington found in the Paul Sagers Collection. The Federal Register *Notice* was published September 2009 and the materials were repatriated. Schermer was invited to be a panel member for a one-day workshop for the 2009 National Association of Tribal Historic Preservation Officers (NATHPO) conference, Durant, Oklahoma. Schermer also attended the NATHPO "To Bridge a Gap" conference hosted by the Muscogee Creek Nation in Tulsa, Oklahoma. The topics included GPS, geophysical techniques, and GIS and the benefits in preservation with their use; other preservation issues; the distinctiveness of native cultures; best practices in tribal consultation; examples of collaborative programs with tribes; and the federal Archaeological Resources Protection Act and NAGPRA from a tribal perspective.

The UI-Stanford Collection continued to provide UI students with educational and research opportunities. The Burials Program also facilitated University of Northern Iowa student research using the UI-Stanford Collection. The Burials Program continues to work on an edited volume, *Human Bone as Cultural Object*, with plans to submit the edited volume to University of Alabama Press in fall 2011.

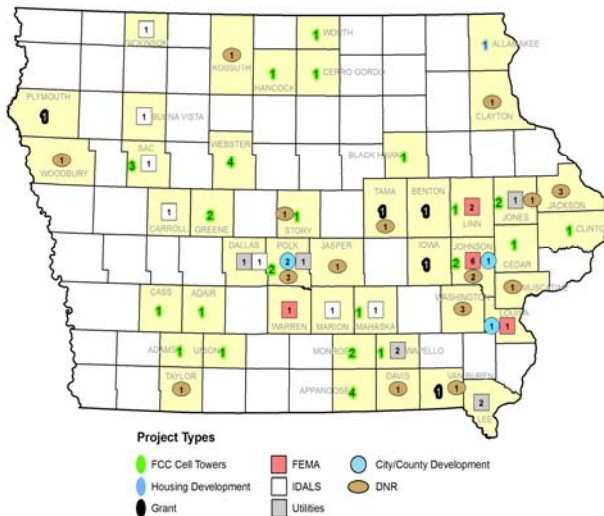
The Burials Program continues to work with the U.S. Army Corps of Engineers, Natural Resources Conservation Service (NRCS), IDNR, Iowa Department of Transportation (Iowa DOT), Iowa State Historic Preservation Office (Iowa SHPO), Effigy Mounds National Monument, Iowa Natural Heritage Foundation (INHF), county conservation boards, developers, and private landowners on various projects with a potential to impact burial sites, long-range management issues, and preservation options. It also provided information about Iowa's Burials Program and the Iowa NAGPRA process to the states of Colorado and Ohio.

CONTRACT SERVICES DIVISION

The Contract Services Division conducts contract and grant-funded research and services. The two programs within the division—the Highway Archaeology Program (HAP) and the General Contracts Program (GCP)—undertake archaeological and architectural history studies statewide. Contract Services projects generate important new knowledge on Midwestern prehistory and history, and they form the basis for many staff publications, professional and public presentations, and student and faculty research projects.

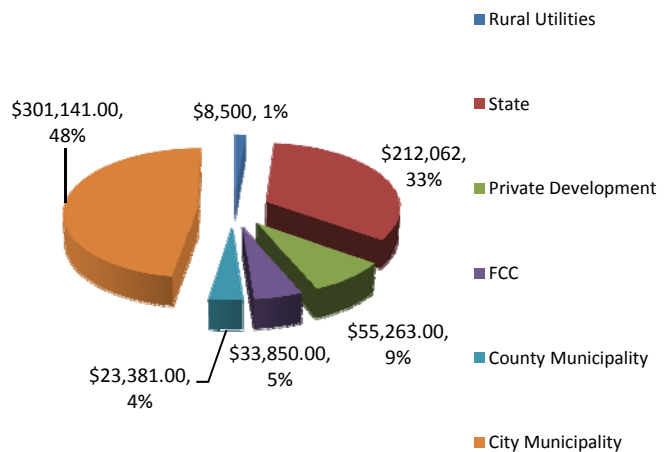
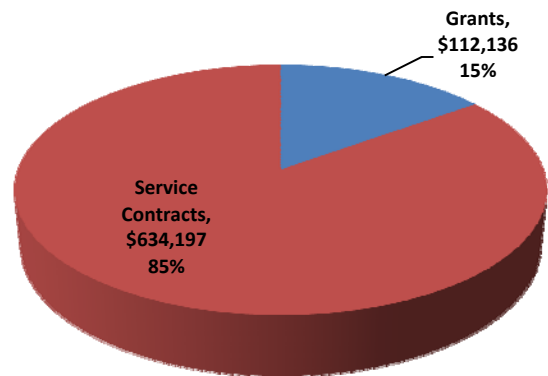
General Contracts Program

In its nineteenth year, FY 2010 saw GCP undertake 86 awards totaling \$746,333. This work



resulted in research investigations in 45 Iowa counties and in Lawrence County, Indiana. Following past practice, awards are tallied fully in the fiscal year initially received regardless of the schedule of planned expenditure. The GCP's consulting activity in FY 2010 exceeded by 11 the number of awarded projects in FY 2009.

As always, there remains considerable volatility in cultural resource management consulting opportunities, although FY 2011 shows promise of high levels of consulting activity by GCP. The program average funding level for the past three fiscal years (FY 2008, FY 2009, and FY 2010) is \$1,208,493.



The GCP received grant awards in FY 2010 including from the National Park Service, State Historical Society of Iowa, Indiana DNR Division of Historic Preservation and Archaeology, Arkansas Archaeological Survey, and the Iowa Valley RC&D. Grant funding totaled \$112,136, or 15 percent of the total FY 2010 revenue. This work has resulted in collaborations with re-

searchers at Indiana University, Beloit College, the Arkansas Archaeology Survey, the UI Department of Geosciences, the Indiana DNR Division of Historic Preservation and Archaeology, the Iowa Valley RC&D, the Midwest Division of the National Park Service, the State Historical Society of Iowa, the Amana Historical Society, the Meskwaki Nation, and Ioway tribal members.

Applied archaeology research contracts, under the auspices of the National Historic Preservation Act, account for \$634,197 (85% of FY 2010 revenue). Various city and state units of government account for nearly half of the research contract revenue. Of the total city municipality revenue, 47 percent (\$141,396) was derived from FEMA projects as a result of the 2008 flood. Private and subsidized development projects, communications towers, county, rural, and federal agencies round out the remaining shares of research contract revenue.

Highway Archaeology Program

The Highway Archaeology Program (HAP) completed its fortieth consecutive year of service under annual contracts with the Iowa Department of Transportation (DOT). Calendar year 2009 marked the twenty-first year that historic architectural evaluations were provided for standing buildings proposed for acquisition or removal, and the fourteenth year that cultural resource evaluations were provided for planners and engineers applying for SAFETEA-LU (Safe, Accountable, Flexible, Efficient Transportation Equity Act—A Legacy for Users) transportation enhancement funding or planning assistance.

Over the past year, the HAP conducted investigations on 73 projects in 41 counties involving Phase IA (reconnaissance), Phase I (identification survey), and Phase II (evaluation) archaeological studies, and to conduct architectural documentation projects on historic sites. Representative projects completed in 2009 included surveys for emergency flood damage repairs, highway intersection reconstruction, bridge and culvert replacements, wetland mitigation, and borrow areas.

Among the projects completed were cultural resource surveys in advance of Interstate 29 im-

provements in the vicinity of the 260th Street overpass in Woodbury County. Archaeological investigations were undertaken for areas required for the Interstate bridge replacement, ramp relocations, driveway reconstruction, and eight potential borrow areas distributed across six sections in Liberty Township. The associated historic architectural survey involved the identification and evaluation of nine architectural sites. Site 97-05376, the John Harrington Farm, was evaluated as eligible for listing in the National Register of Historic Places under Criterion C as one of the two best surviving examples in Liberty Township of a turn-of-the-twentieth-century farmstead oriented towards corn and livestock production. House I and the barn on this property, evaluated separately as sites 97-05377 and 97-05378, are evaluated as contributing resources within the farmstead district. In addition, the house (site 97-05377) is evaluated as individually eligible for National Register listing as a relatively early surviving example of a farm residence in Liberty Township that retains a high degree of integrity of design, materials and workmanship from the turn of the twentieth century.

The study titled *Iowa's Historic Automobile Roads*, a National Register investigation of pre-1948 arterial highways, was completed as part of a Memorandum of Agreement between the Iowa DOT and SHPO stemming from the mitigation of archaeological site 13MC133, an early automobile road segment. The study examined two highway corridors of multi-county length in both north-south and east-west directions. The focus of the study was the right-of-way and did not include ancillary elements except where pertinent. The intensive survey chose early routes of U.S. 34 and U.S. 218. A total of 1,452 highway-related structures were identified, analyzed, and evaluated. Eleven principal historic themes related to arterial highway construction in Iowa were identified. These overlapping themes outlined specific historical, technological, and political trends and periods specifically related to highway context development. These themes provide the baseline means for applying historic contexts during the study period that dates from 1900 to 1948. Using the two study routes as examples, the report presents information on how to

identify, survey, and document historic roads in Iowa, and evaluate their significance under National Register of Historic Places criteria.

The procedures developed over the years and used by the University of Iowa Highway Archaeology Program for cultural resource identification and evaluation are in compliance with state and federal regulations and guidelines for fieldwork, reporting, and curation of materials. The goals continue to be to provide the Iowa DOT with comprehensive archaeological and historic architectural coverage on transportation projects, and authoritative cultural resource evaluations for SAFETEA-LU transportation enhancement planners, and to use this information to expand the knowledge of Iowa's rich cultural heritage.

GENERAL SERVICES DIVISION

Curation Services Program

By statute the OSA is the State Archaeological Repository for Iowa. The OSA curates collections from the OSA Contract Services Division, private archaeological consulting firms, OSA research, and from private donations. OSA curates collections for federal and state agencies including Rock Island District Corps of Engineers, Kansas City District Corps of Engineers, U.S. Fish and Wildlife Service, Iowa Army Ammunition Plant, General Services Administration, IDNR, and State Historical Society of Iowa. The OSA is the designated repository for the Charles R. Keyes Archaeological Collection for the State Historical Society of Iowa.

The OSA Accession Record maintains in database format information regarding the acquisition of collections. In FY 2010, nine collections were newly accessioned into the repository, all from projects conducted by private consulting firms. The total number of accessioned collections at the end of FY 2010 was 13,976, reflecting correction of a database calculation error in the FY 2009 report of accessions.

The OSA tracks the use of both on-site collection examinations and collection loans. In FY 2010, 67 separate collections were examined including 19 collections in the Charles R. Keyes

Collection. The collections were examined by nine OSA staff members and 14 other researchers. A total of 22 loan agreements were signed representing 27 separate OSA collections and 15 Charles R. Keyes collections. Collections were loaned for exhibits, educational programs, and research. Collections were loaned to OSA staff and others including the UI Museum of Natural History and Department of Anthropology; Mississippi Valley Archaeology Center, University of Wisconsin—La Crosse; Department of Anthropology, Iowa State University; Wapello County Conservation Board Pioneer Ridge Nature Area; Dubuque County Conservation Board Swiss Valley Nature Center; Rock Island District Corps of Engineers, Saylorville Reservoir; and the Archeology Laboratory, Augustana College for exhibit at the Mitchell Prehistoric Indian Village, Mitchell, South Dakota.

Deaccessioning of collections occurs infrequently under established guidelines either for entire collections or individual objects in a collection. No collections or objects were deaccessioned in FY 2010.

Documents Collection Program

The Documents Collection Program (DCP) curates in the OSA Archives all documents and photographs pertaining to projects for which there are collections in the State Archaeological Repository at the OSA. All documents produced as a part of projects undertaken by the GCP and the HAP, whether or not there are collections, are also a part of the Archives. Materials from other projects completed in Iowa by other institutions may also be curated here. The DCP acquires other published research materials on Iowa and regional and national archaeology. These become part of OSA's permanent research library. OSA staff members, UI students, and other researchers utilize these resources on a regular basis.

In the past year, researchers from many institutions have utilized the DCP's resources. These include Beloit College; Herbert Hoover National Historic Site; Iowa Department of Human Services; Iowa DOT; *Iowa Review*; Iowa State University; *Iowan Magazine*; Kansas University; Lewis and Clark Trail Project; Louis Berger

Group, Inc.; Michael Baker Corporation, Pennsylvania; Mississippi Valley Archaeology Center, University of Wisconsin-La Crosse; NPS, Midwest Archaeological Center; private citizens in Davenport and Bonaparte; Queens College, New York; State Historical Society of Iowa; UI's departments of Geoscience, Anthropology, and American Studies; University of Illinois; University of Northern Iowa; Van Buren County Conservation Board; and Wapsi Valley Archaeology.

Funded by a grant from the State Historical Society of Iowa, the DCP is continuing into the second year of a major multi-year project. The project's goal is to produce digital image files of 47,011 original photographs and slides of archaeological investigation at 2,023 archaeological sites in the Iowa Site File and associated collections curated in the State Archaeological Repository by the OSA. Images span the entire 50 years of OSA history and include some dating to the time of Charles Keyes and Ellison Orr. To date, 17 students from UI and Kirkwood Community College have worked on the various facets of the project. For each photograph or slide, two image files are being created—a high-resolution archival quality preservation image in Tagged Information File Format (TIFF) and a lower resolution compressed user-access copy in Joint Photographic Experts Group (JPEG) format. The JPEG images will be provided to the UI's Digital Library Services which will serve as host for a major photographic collection on Iowa archaeology, publicly available through the Iowa Digital Library web site, <http://digital.lib.uiowa.edu>.

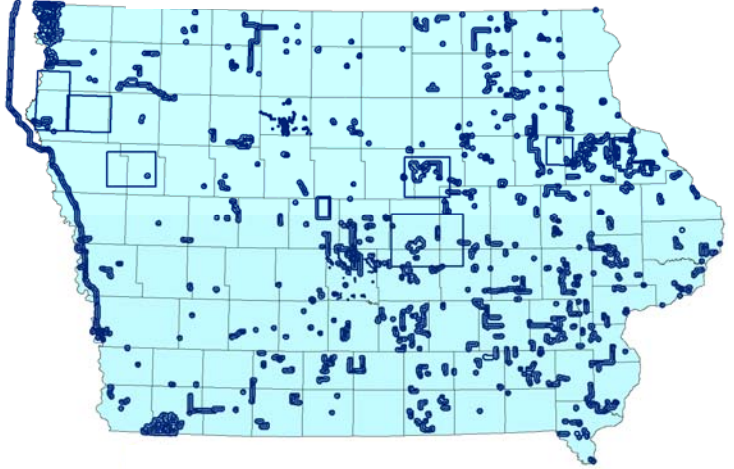
Geospatial Program

The Geospatial Program (GEOP) maintains the Iowa Site File, an inventory of recorded archaeological sites in Iowa. The Iowa Site File consists of a Geographic Information System (GIS) and relational database.

The program also provides geoarchaeological and GIS consulting services, as well as grant-funded research. The program derives funding from the University of Iowa general appropriations to the OSA, fees charged for site records searches and on-line site file access, and externally funded grants and contracts. During FY

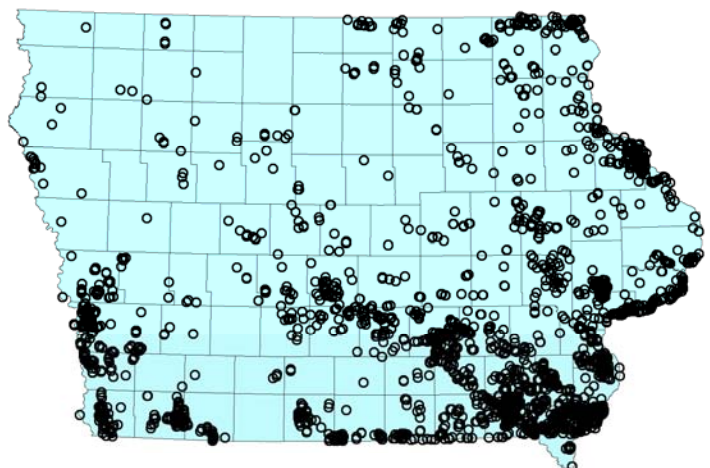
2010, the program supported 3 permanent positions, one full time hourly employee, and 2–3 part time hourly employees.

283 Site Searches



During FY 2010, the program continued to maintain and disseminate information from the Iowa Site File. The accompanying maps show the location of sites added to the Iowa Site File in FY 2010, and the locations of the 283 site searches conducted. A total of 2,336 site numbers were assigned to newly recorded sites in 86 counties. Data for 2,534 sites were added to the site file, over 1,700 of which were added as the result of a grant to digitize features shown on the General Land Office Survey maps of Iowa. Most of the remaining ca. 800 sites were recorded during cultural resource investigations, with some also reported by landowners, amateur archaeologists, and other non-professionals.

2534 New Sites



As of June 30, 2010, 25,862 archaeological sites were recorded in the Iowa Site File GIS and database. In FY 2010, the Site Records Manager conducted 283 data searches for consultants, agencies, and individuals. She also printed 23 posters for UI students and faculty presenting in poster sessions at professional conferences. Searches and posters generated \$11,680 in revenue.

The breakdown of entities provided information via site searches is as follows:

Client Class	No. of searches
Academic Research	3
City Government	39
CRM Contractors	62
Developers	47
Engineering/Environmental Consultants	52
Federal Agency	45
Nonprofit Environmental	2
Regional Planners, COGs	24
State Agency	15
Student Research	17

Information from the Iowa Site File is also provided on the World Wide Web. The I-Sites map server, www.uiowa.edu/~osa/gisatosa, provides maps of all 99 Iowa counties showing the locations of Public Land Survey sections (approximately 1 x 1 mile) where archaeological sites have been recorded. A password-protected website, www2.uiowa.edu/i-sites/pro, provides qualified professional archaeologists and their staff with access to more detailed data on archaeological sites. As of the end of FY 2010, 193 individual users were registered to use I-SitesPro™, under 20 licenses purchased by individuals, firms, and agencies. License fees generated revenues of \$30,115.

During FY 2010, the Geospatial Program received awards totaling \$179,263 for eight new geoarchaeological and GIS projects with project areas in Iowa, Minnesota, and North and South Dakota. Program staff also received funding from six new awards to other OSA programs.

Highlights of the program's research year include a feasibility study for the Minnesota State

Historical Society to apply Light Detection and Ranging (LiDAR) to the detection of prehistoric earthworks. LiDAR is a remote sensing technique that used airborne lasers to create very accurate elevation maps. Results from the study are contributing to efforts within Minnesota to establish a statewide program for LiDAR data collection.

GEOP completed an HRDP-funded grant to digitize cultural features mapped by the nineteenth century General Land Office Surveys in Iowa. Euroamerican dwellings and fields comprise 64% of the 6,621 features depicted on the maps. Other features include forts, trading posts, towns, mills, mines, and trails. Native American features include houses, villages, cemeteries, and a prehistoric mound group. The dataset is available via I-SitesPro™ to professional researchers and cultural resource professionals, and is incorporated into generalized data on site location provided to the public.

In FY10, the I-SitesPro™ GIS map server was moved from Iowa State University (ISU), where it had resided since it was first created in 2003, to a server at the Iowa Department of Transportation (DOT). The Iowa DOT agreed to host the server as part of a web portal created for use by the Office of Location and Environment (OLE) and its consultants, which includes OSA and several cultural resource contracting firms. The public I-Sites map server, significantly improved by ISU staff, still resides at that University.

For UI Facilities Management, GEOP conducted Phase IA studies of archaeological potential for campus areas as part of the University's flood mitigation and recovery efforts. These projects compiled and synthesized a wealth of data on the subsurface geology of the campus, as well as photographs and maps documenting changing land use through town as campus expanded into former residential neighborhoods on the floodplain of the Iowa River.

GEOP engaged in several international GIS and geoarchaeological projects; these are described more fully under the "International Endeavors" section of this report.

Information Technology Program

The ITP works closely with the OSA staff members, UI's Information Technology Systems, and various vendors to maintain the OSA's computer network and its many components. The ITP handles repairs and upgrades for all OSA information technology equipment and is responsible for the general health of the OSA information technology system—performing regular and emergency virus detection, repair, and removal. Since its inception, the ITP has been instrumental in all aspects of planning and implementing the OSA network system including a regular reassessment of all OSA hardware and software.

Software and hardware training for the OSA staff also falls within the responsibilities of the ITP. The OSA staff is provided with computer training and assistance for all software applications which include ESRI ArcGIS 9.3, GPS data processing software, Microsoft Office 2008, Adobe PageMaker CS3, and CorelDRAW Graphics Suite.

The ITP also reviews the UI's IT Policy Survey and IT Parallel System Audit, participates in the activities of the UI's Spam Reduction Team and the Security Review Team, and assists with the Campus Information Technology Leaders Strategic Security Plan.

During FY 2010, the ITP undertook a number of major software upgrades. Since the ITP inception in 2001, several large-scale conversions were completed. These conversions include the following:

- The OSA's server system was substantially upgraded. The Dell E5210 server has been upgraded to Windows Server 2008 R2.
- All 47 of the OSA personal desktop computer were upgraded to Windows 7 64 bit. The OSA continued to replace its aging fleet of monitors with the acquisition of seven new flat panel LCDs (24-inch Samsung Syncmaster 2443bwx). The OSAs fleet of laptops is also being upgraded with Windows 7 64 bit.
- Website improvements are ongoing. In FY 2010 150 new pages were added, many focusing on the EOP's effort. A

clickable version of the RAGBRAI 2010 map was also added in addition to an ongoing I-Sites migration from ASP Classic to Asp.net4.

- The ITP produced a video that was entered into the Society for American Archaeology's 7.5 minute Archaeological Film Festival. A video was also created of the OSA's participation in the 2009 RAGBRAI event, and footage of that video streams from the OSA Facebook page as well as its website.

PUBLICATION DIVISION

The OSA continues to publish four scientific series on Iowa archaeology—*Contract Completion Reports*, *Project Completion Reports*, *Reports*, and *Research Papers*—as well as occasional Special Publications, pamphlets, calendars of events, and posters. During FY 2010, the OSA produced 61 *Contract Completions Reports* and 23 *Project Completion Reports*. These scientific publications are listed in Appendix F.

Staff members continued production of the quarterly "OSA News" incorporated within the *Newsletter of the Iowa Archeological Society*, and the OSA continues its support for editing, production, and printing of the *Newsletter* as well as the annual *Journal of the Iowa Archeological Society*. The full-color issues of the *Newsletter* are produced at the OSA and printed by UI Printing Service's digital press. Electronic publishing via the World Wide Web continued to grow with the addition of 150 new web pages. The OSA website currently contains a wide variety of information related to Iowa archaeology and related subjects.

INTERNATIONAL ENDEAVORS

During FY 2010, Joe Artz worked with Katiina Lillios, UI Department of Anthropology, on the analysis of materials from Bolores, a Late Neolithic through early Bronze Age mortuary site in Portugal. Through the academic year, Artz mentored Meagan Thies, an anthropology undergraduate honors student in working with the Bolores GIS. The Geospatial Program also worked

with Russ Ciochon (Anthropology) and Art Bettis (Geoscience) to create a GIS for the Early Paleolithic *Homo erectus* site of Ngandong, Java and also produced maps for Ciochon's contribution on the Paleolithic of Southeast Asia, to appear in the *Cambridge Encyclopedia of Prehistory*. The first detailed map of the site was created, showing both the 2008 and 1934 excavation units in relation to topography, interpolated at a 50 cm contour interval, from total station data collected in 2008.

Shirley Schermer and Artz continued their international involvement with Kosova related to student exchanges and assistance with attempts to establish a Department of Archaeology and Physical Anthropology at the University of Prishtina. Schermer co-authored a chapter (with Edi Shukriu, University of Prishtina, and Sylvia Deskaj, Michigan State University) on Kosova legislation and policies on human remains, to be included in an edited book on European laws and practices. Routledge will publish the book, entitled *The Routledge Handbook of Archaeological Human Remains and Legislation: An International Guide to Laws and Practice in the Excavation and Treatment of Archaeological Human Remains*, in spring 2011.

STAFF LEADERSHIP SERVICE AND AWARDS

Staff members received several awards and served a wide variety of leadership roles in public and professional service during FY 2010. (For staff service as members of boards, commissions, or committees, see Appendix E.)

Lynn Alex served as co-editor of the *Newsletter of the Iowa Archeological Society* (with Stephen Lensink) and as Iowa coordinator for *Project Archaeology*. She continued serving as facilitator for the SAA Public Education Committee State Network and on the SAA Public Education Committee.

Mark Anderson served as chair of the Iowa Academy of Science Anthropology Section.

John Doershuk continued service to the UI Research Council, serving on the Publications Waiver subcommittee. He was reappointed for the 2009–2010 academic year as Adjunct Assistant Professor in the Department of Anthropology. He was awarded a Mary Jo Small Fellowship for travel to the 75th Annual Meeting of the Society for American Archaeology, April 14–18, 2010.

Alan Hawkins served as Membership Secretary and Treasurer for the Iowa Archeological Society.

John Hedden served as Secretary-Treasurer of the Association of Iowa Archaeologists.

Stephen Lensink served as co-editor of the *Newsletter of the Iowa Archeological Society* (with Lynn Alex). He was reappointed for the 2009–2010 academic year as Adjunct Assistant Professor in the Department of Anthropology.

Carl Merry was reappointed to an additional term by the State Historic Preservation Officer as Professional Archaeologist to the State of Iowa National Register Nominations Review Committee.

Michael Perry served as Editor of the *Journal of the Iowa Archeological Society* (2005–2008 and 2008–2011 terms).

Melody Pope was reappointed for the 2009–2010 academic year as Adjunct Assistant Professor in the Department of Anthropology.

Cindy Peterson served as Chairperson of the State Preserves Advisory Board, IDNR.

Shirley Schermer continues to serve as Adjunct Instructor with the Department of Anthropology, as an archaeological advisor to the State Preserves Advisory Board and as special advisor to the Society for American Archaeology Public Education Committee.

Wm. Lane Shields served as chair of an ad hoc committee in West Branch to apply for membership in the Certified Local Government program administered by the State of Iowa and the National Park Service.

Review of Fiscal Year 2010 Annual Work Plan Accomplishments

The FY 2010 Annual Work Plan for the OSA set 15 specific objectives, all partially or completely accomplished, to be achieved during the fiscal year. These objectives address particular goals as set forth in OSA's five-year strategic plan for 2005–2010:

1. Utilize OSA resources to provide undergraduate and graduate students with research and employment opportunities including volunteers, work-study students, research assistants, and interns (Goals 1 and 3).
2. Participate in the UI mission to provide high quality learning experiences for undergraduate students by offering a first-year seminar fall semester and a course on lithic analysis spring semester in cooperation with the UI Department of Anthropology, utilizing OSA's laboratory/classroom space and specialized microscopy equipment (Goal 3).
3. Assist UI officials with completion of cultural resources compliance responsibilities associated with receipt of disaster recovery and hazard mitigation funds from state and federal sources (Goal 2).
4. Complete the reorganization of OSA's human resources and accounting functions and meet UI Sub-Certification goals by hiring a Research Administrator (Goal 5).
5. Submit for publication 10 book chapters and articles, including to peer-reviewed journals, and contribute to online websites and Wikis to improve the dissemination of information about Iowa's past (Goals 1, 4, and 5).
6. Continue to pursue funding for renovation of the OSA B9 Repository portion of the 700 CLSB basement through the Historic Sites Preservation Grant program (State Historical Society of Iowa) and, if appropriate, through resubmission to the National Endowment for the Humanities *Sustaining Cultural Heritage Collections* program (Goals 1, 3, and 5).
7. Continue to assist The Archaeological Conservancy in their efforts to identify one or more significant Iowa archaeological resources to preserve through outright purchase (Goal 2).
8. Re-submit the SAFETEA-LU Transportation Enhancement grant program application "Archaeological Research Culminating in the Publication of a Scientific Report on Iowa-DOT-excavated Sites of the Glenwood Culture and Associated Educational Outreach Components" (Goals 1, 2, and 4).
9. Organize and lead a multi-disciplinary research team to execute the Iowa Valley Scenic Byway Management Plan Update project (Goals 1, 2, and 4).
10. Develop a plan for Iowa's *Portal to the Past* website upgrade including application through the UI competitive ARRA (a.k.a., "stimulus") funding program; pursue additional sources to undertake the project as necessary (Goals 2, 4, and 5).
11. Extend development of OSA's I-Sites product line including enhancing web map service capabilities driven by an on-campus geodatabase while broadening cooperative working relationships with UI campus groups involved with similar technological development (Goals 1–5).
12. Explore offering a public archaeological field school during summer 2011 (Goals 2 and 4).
13. Serve as host institution for the annual three-day Midwest Archaeological Conference, October 2009, including a reception at the UI Museum of Natural History and a banquet with guest speaker at the Sheraton Hotel (Goals 3 and 5).
14. Execute Historical Resource Development Program grant-funded research at 13LE10, original Fort Madison, to better define the War of 1812 battlefield and "Black Hawk's Ravine" including developing a preservation plan for this nationally significant resource (Goals 1, 2, and 4).
15. Engage with the Iowa State Preserves Advisory Board, Iowa Historic Preservation Alliance, Iowa Natural Heritage Foundation, and similar groups to establish archaeological preserves and conservation easements on Iowa properties containing significant archaeological resources (Goals 2 and 5).

SUMMARY

Particularly noteworthy among the FY 2010 accomplishments is the successful recruiting and hiring of OSA Research Administrator Amy Pegump. This position was a long overdue and much needed addition to the OSA staff.

The OSA continued its wide-ranging research and service programs during FY 2010. The high level of staff members' research and service activities was especially notable as well as the following lime-lighted accomplishments:

- IAM 2009: *Iowa Archaeology on the Road* that took word of Iowa's archaeological heritage to communities and riders along the route of RAGBRAI, July 25–31, 2009 as well as to the annual Meskwaki Pow-wow,

Hooverfest in West Branch, and the Iowa State Fair, as well as presentations at individual communities around the state;

- the second phase of a large-scale project to digitize OSA's unique documents, slides, photographs, maps and diagnostic artifacts;
- the successful execution of a substantive project for a comprehensive research design for the archaeology of the Loess Hills Region of Iowa and a nomination process for National Register and National Historic Landmark status for sites in the region; and
- implementation of a comprehensive plan addressing OSA's critical shortage of Repository space including submission of grants requesting matching funds to those of the OSA and the UI to solve this problem.

Fiscal Year 2011: Plans and Prospects

In FY 2011 the OSA will continue energetically pursuing research and service activities throughout Iowa, the surrounding region, and internationally. In the process, the OSA will initiate implementation of its current five-year strategic plan (see Appendix A).

The OSA for FY 2011 has established 16 specific objectives which are tied to goals identified in OSA's *Strategic Plan: 2010–2016*. These objectives are designed to focus OSA staff effort toward contributing to the UI a more effective public research university while cost-efficiently maximizing the development, dissemination, and preservation of knowledge of Iowa's human past. The 16 specific objectives, with corresponding strategic plan goals, are:

1. Undertake REAP/HRDP-funded field investigations at the Iowaville site including involvement of interested UI students, Ioway tribal members, and Iowa Archeological Society members.
2. Utilize OSA resources to offer undergraduate and graduate students research and employment opportunities including as volunteers, work-study students, research assistants, and interns, and explore whether OSA can feasibly provide partial funding and mentoring for a graduate student in Anthropology working on a Master's degree specialization in CRM archaeology.
3. Provide archaeological and osteological services for the identification and excavation of unmarked burials at a nineteenth century historic cemetery in Dubuque; continue providing high quality osteological services to law enforcement personnel as needed.
4. Pursue funding that builds on existing OSA strengths using LiDAR and GIS for complex spatial analyses, including the *NEH Collaborative Research Program* for high precision mound-mapping.
5. Re-submit the *SAFETEA-LU Transportation Enhancement Grant Program* application "Archaeological Research Culminating in the Publication of a Scientific Report on Iowa-DOT-excavated Sites of the Glenwood Culture and Associated Educational Outreach Components."
6. Develop Iowa Archaeology Month 2011 plans to continue significant statewide impact and contribute to the recognition of UI and OSA's leading roles in preserving and investigating Iowa's past.
7. Work in partnership with UI Information Technology to improve the non-spatial database web portion of I-Sites in order to: improve web and server-side security; enhance clients' experience through improved interfaces and query capabilities; and upgrade web and database components to comply with current technology.
8. Encourage OSA staff participation in mentoring Iowa undergraduate students in ICRU-funded research and increase OSA's visibility to undergraduate students as a resource for mentored research opportunities.
9. Generate sufficient student enrollment for OSA's fall 2011 First-year Seminar by participating in the UI Summer Orientation programming and getting OSA "on the map" provided to new students.
10. Support UI Department of Anthropology efforts to establish a new local archaeology field school initiative.
11. Continue enhancement of the OSA website and Facebook presence by featuring 1) products associated with the Sagers HRDP grant effort; 2) information on the Archaeological Conservancy's recent purchase of the Woodfield Earthlodges site; 3) developing and posting informative "what about?" archaeology video shorts; and 4) uploading/linking OSA Archives photos to the Iowa Digital Library.
12. Continue current OSA involvement with the Bolores, Portugal project in collaboration with the UI Department of Anthropology and pursue new initiatives in international cooperative research.
13. Complete renovation of the OSA B9 Repository portion of the 700 CLSB basement and associated Archives and Room 120 reorganization to create the most efficient and up-to-date curation facility possible in-

- cluding enhanced digital access; provide OSA staff with training on new layout and access procedures.
14. Submit for publication at least 10 journal articles and book chapters, including to peer-reviewed journals, and contribute to online websites and Wikis to improve the dissemination of information about Iowa's past thereby increasing OSA's visibility as a contributor to establishing UI as a top 20 public research institution.
 15. Assist the Whiterock Conservancy with the development of archaeological education programming.
 16. Complete planning for a Summer 2011 Wickiup Hills joint OSA/Iowa Archeological Society field project.

Acknowledgements

I would like to extend my sincere appreciation to the following staff members for their considerable effort in assisting with the preparation of this annual report: Lynn Alex, Joe Artz, Angela Collins, John Cordell, Mary De La Garza, John Doershuk, Julie Hoyer,

Linda Langenberg, Steve Lensink, Carl Merry, Michael Perry, Melody Pope, Shirley Schermer and Bill Whittaker. Any errors or omissions are mine.

Amy L. Pegump
Research Administrator

Budget for Fiscal Year 2010

The OSA budget for FY 2010 totaled \$3,634,397. Of the budget total for FY 2010, \$560,044 (15.4 percent) consisted of UI General Education Fund (GEF) appropriations for salaries, benefits, general operating expenses, and safety equipment (Tables 1 and 2). The majority of OSA funding for FY 2010 (84.6 percent) derived from sponsored projects, fees, contributions, gifts, and UI Research Incentive and other non-GEF support (Tables 1, 3–5). The HAP contract with the Iowa DOT accounted for the greatest single source of non-GEF support, amounting to 63.0 percent of all non-GEF money and 67.5 percent of total OSA funding for FY 2010. The HAP annual contract runs on a calendar year rather than fiscal year; this report continues previous years' practice of assigning the calendar year funding total to the fiscal year in which the contract began. New funding for sponsored research other than the HAP contract totaled \$927,589 for FY 2010. The number of employees for all programs during FY 2010 totaled 88 along with seven student volunteers. (Table 7, Figure 2).

Figure 1 and Table 1 show OSA annual budget totals from FY 1987 through FY 2010. Funding from UI appropriations has increased steadily, if unevenly, through most of this period. The majority of the growth reflects annual raises to UI staff as authorized by the Board of Regents as there has been relatively little change through the years at OSA in the number of GEF-supported positions. Downward fluctuations reflect, for example, temporary periods of transition between directors resulting in fewer salary and fringe benefit dollars being allocated to the office while the position went unfilled. A significant change, in the early 1990s, was the loss of OSA's Editor as a GEF-supported position.

Beginning in FY 1999, the OSA benefited from steady, if modest growth (1.5 to 6 percent

yearly) through FY 2004. The relatively volatile changes in funding from FY 2004 through FY 2008 reflect an extended period of transition between directors, a pattern that stabilized beginning with FY 2008. National economic turmoil resulted in a response by state government to reduce UI GEF support for FY 2010, a cut which was temporarily buffered by a one-year-only allocation of American Recovery and Restoration Act funding. The full impact of this cut will be reflected in the decreased GEF support experienced by OSA in FY 2011.

As Table 1 and Figure 1 document, funding received by OSA from external (non-GEF) sources has greatly increased over the past two decades. In 1987 for each \$1 of GEF support received, the OSA typically generated \$2 of non-GEF support. For the period FY 1992 through FY 2010, OSA achieved a greater than five-fold return on GEF investment, with several years exceeding an eight-fold return.

Figure 2 further illustrates the positive financial impact of OSA's presence at UI. Since 1996, OSA has generated and returned to UI \$5,972,720. These funds are required "Facilities and Administrative" (F&A) costs collected as part of externally-funded projects undertaken by OSA in its role as a UI research department. This amount equals 87.95 percent of the total UI GEF support received by OSA since 1996. Average net cost per year measured as GEF allocation minus F&A costs generated by OSA for UI for the 15-year period is \$54,560.

As of the time of the production of this report, OSA's projected funding from external grant and contract sources appears as strong, if not stronger, for FY 2011 as it was in FY 2010. Several large-scale grant-and contract-funded projects are underway which will yield significant new research data on Iowa archeology.

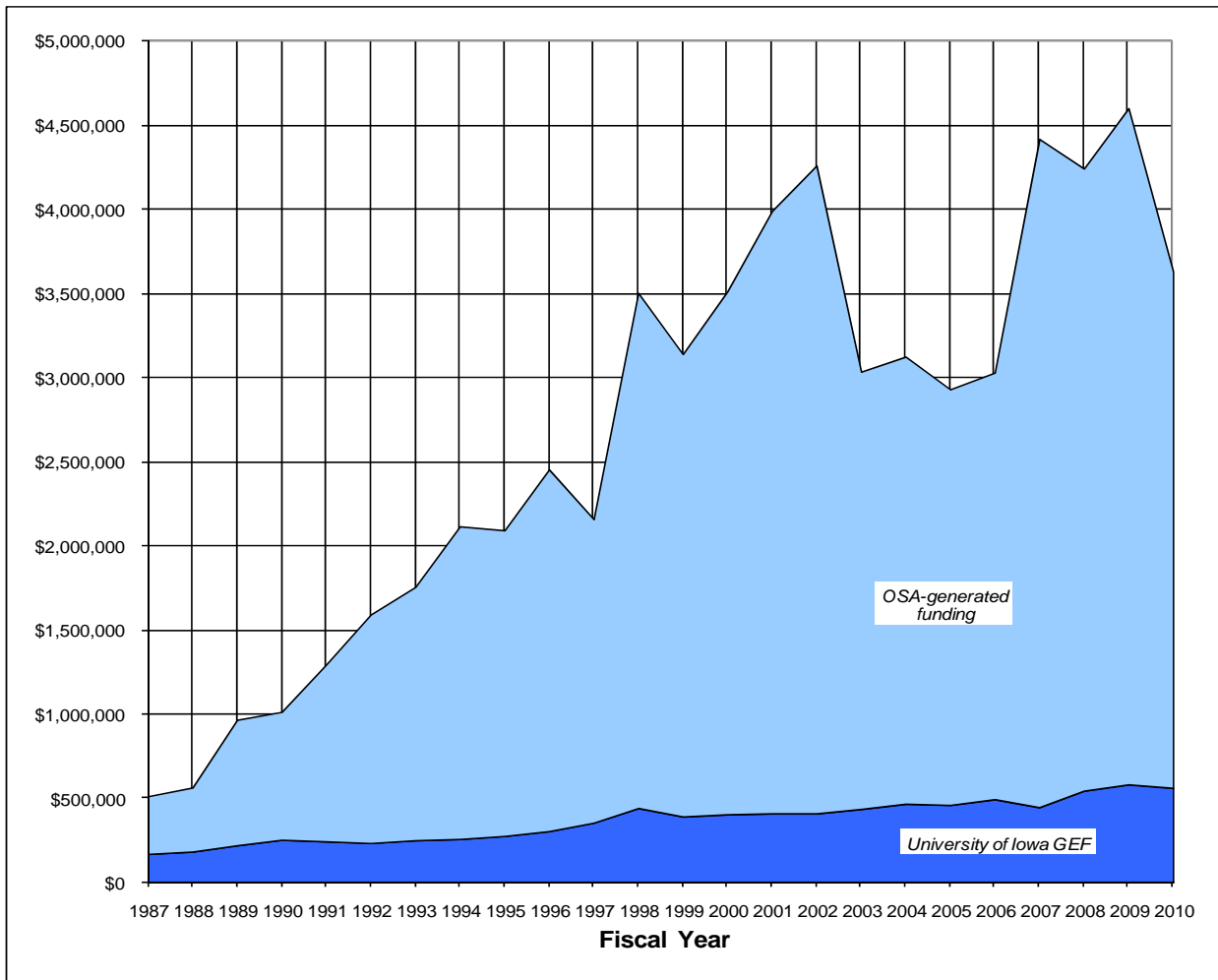


Figure 1. Office of the State Archaeologist funding levels, Fiscal Years 1987–2010.

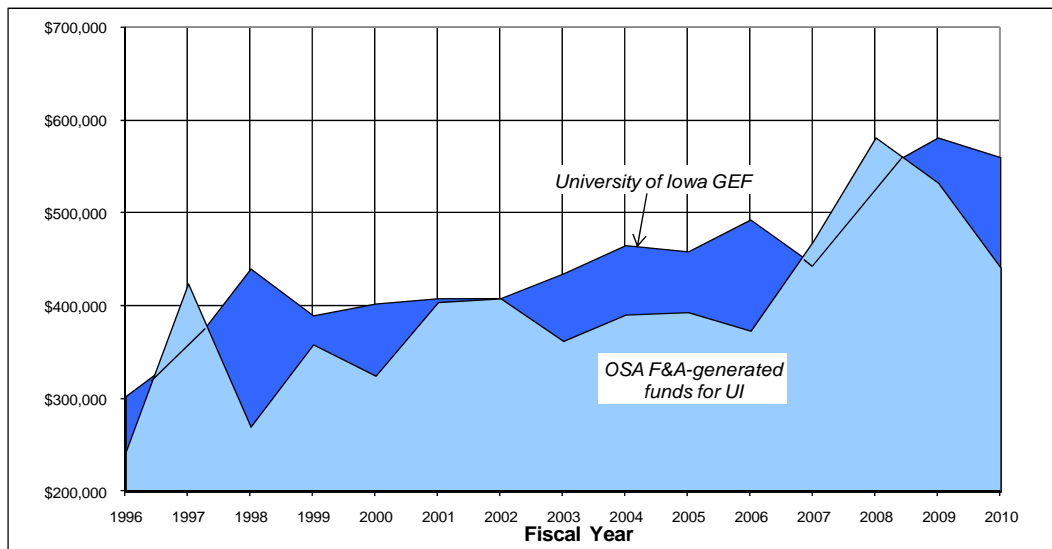


Figure 2. Comparison of UI General Education funding (GEF) allocation with Facilities and Administrative (F&A) costs generated for UI through OSA grant and contract activity, Fiscal Years 1996–2010.

Table 1. Office of the State Archaeologist Budgets, Fiscal Years 1987–2010.

Fiscal Year	University of Iowa GEF Support ¹	Research Incentive & other UI Funds ²	Gifts and Return on Endowments ³	Fees & Contributions ⁴	Grants & Contracts ⁵	Total	% Non-GEF Support
1987	\$166,378	—	—	—	\$343,814	\$510,192	67.4
1988	\$180,450	—	—	—	\$381,611	\$562,061	67.9
1989	\$218,321	—	—	—	\$746,440	\$964,761	77.4
1990	\$250,721	—	—	\$3,392	\$758,115	\$1,012,228	75.2
1991	\$241,892	—	—	\$20,666	\$1,032,124	\$1,294,682	81.3
1992	\$231,763	—	—	\$4,828	\$1,355,345	\$1,591,936	85.4
1993	\$248,162	—	—	\$3,925	\$1,503,660	\$1,755,747	85.9
1994	\$255,391	—	—	\$995	\$1,860,710	\$2,117,096	87.9
1995	\$273,846	—	—	\$3,442	\$1,815,692	\$2,092,980	86.9
1996	\$302,603	—	—	\$9,599	\$2,143,301	\$2,455,503	87.7
1997	\$352,857	\$9,227	—	\$4,874	\$1,792,913	\$2,150,644	83.6
1998	\$440,045	\$16,108	—	\$5,750	\$3,044,573	\$3,490,368	87.4
1999	\$389,553	\$10,249	—	\$16,551	\$2,726,245	\$3,132,349	87.6
2000	\$402,362	\$13,614	—	\$14,288	\$3,085,581	\$3,502,231	88.5
2001	\$408,071	\$12,336	—	\$41,569	\$3,531,186	\$3,980,826	89.7
2002	\$423,448	\$15,346	—	\$50,414	\$3,791,216	\$4,265,078	90.1
2003	\$450,152	\$15,495	\$100	\$35,966	\$2,551,074	\$3,037,292	85.2
2004	\$479,047	\$13,756	\$370	\$58,244	\$2,589,257	\$3,126,918	84.7
2005	\$473,335	\$14,834	\$60	\$101,250	\$2,357,860	\$2,932,505	83.9
2006	\$507,801	\$14,933	\$60	\$51,872	\$2,474,091	\$3,031,824	83.2
2007	\$459,007	\$14,176	\$6,200	\$81,653	\$3,876,329	\$4,423,189	89.5
2008	\$561,546	\$17,838	\$10,006	\$203,489	\$3,471,418	\$4,246,459	86.5
2009	\$581,252	\$23,276	\$2,520	\$376,553	\$3,622,303	\$4,605,904	87.4
2010	\$560,044	\$22,115	\$2,756	\$195,048	\$2,854,434	\$3,634,397	84.6

¹Safety equipment contributions by the UI are not included for any year prior to FY 2007, nor are they available for these years. Annual Reports for FY 2002–2008 included Research Incentive funds in this total.

²Research Incentive funds first became available in FY 1997. From FY 1997 to FY 2008, only Research Incentive funds are included in this funding.

³Amounts for gifts are not available for FY 1987 through FY 2002. Gifts include return on the UI Foundation's endowment fund for the Office of the State Archaeologist.

⁴Amounts for fees and contributions are not available for Fiscal Year 1987 through FY 1989. Totals for FY 1990 through FY 2000 and FY 2002 do not include GIS and Site Records fees, and totals for FY 1990 through FY 1999 do not include Burials Program fees.

⁵Grants and contracts generated the following Facilities and Administration returns for the University of Iowa: FY 2010 \$440,829; FY 2009 \$532,334; FY 2008, \$580,886; FY 2007, \$469,414; FY 2006, \$373,047; FY 2005, \$392,968; FY 2004, \$390,363; FY 2003, \$361,995; FY 2002, \$407,757; FY 2001, \$403,836; FY 2000, \$324,627; FY 1999, \$358,258; FY 1998, \$269,706; FY 1997, \$423,888; FY 1996, \$242,812.

Table 2. University of Iowa General Education Fund Support for OSA Operations, Fiscal Year 2010.

Salaries	\$364,209
Fringe Benefits	\$140,221
General Expenses	\$14,791
Safety Equipment	\$1,552
General Expenses, Burials Program	\$4,492
ARRA Funds (Salary and Fringe)	\$34,779
Total	\$560,044

Table 3. Research Incentive and Other University of Iowa Non-General Education Fund Support for OSA Operations, Fiscal Year 2010.

Research Incentive	\$20,229
UI Foundation-Staff Excellence Fund	\$2,756
University of Iowa Staff Council, Midwest Archaeological Conference	\$1,886
Total	\$24,871

Table 4. Funding Received from Fees and Contributions, Fiscal Year 2010.

Burials Program	\$75,250
Curation Services Program*	\$36,176
Education and Outreach Program	\$5,218
Geospatial Program	\$76,042
Information Services Program	\$600
Publications Program	\$1,762
Total	\$195,048

*Includes return on the endowment fund held by the UI for the Office of the State Archaeologist.

Table 5. Funding Received for Sponsored Research and Services, Fiscal Year 2010.

Project by Program	County	Award
Education and Outreach Program		
HRDP Grant: Russ Campbell Archaeological Collections Organization and Storage Project	Humboldt	\$4,693
Humanities Iowa grant: Iowa Archaeology Month 2010: Touring Across Iowa's Past	Statewide	\$10,000
Iowa Arts Council, Iowa Department of Cultural Affairs (Let's Celebrate Archaeology)	statewide	\$562
Irishfest	Des Moines	\$68
Subtotal		<u>\$15,323</u>
General Contracts Program		
DNR State Parks: Lake Darling Archaeological Excavation at Site 13WS537	Washington	\$123,945
Iowa Valley RC&D: Corridor Management Plan Development	Benton, Iowa, Tama	\$71,120
Shive-Hattery Inc.: FEMA Cedar Rapids Schools Administrative Building Archaeological Testing at Four Sites	Linn	\$49,774
Snyder Associates: WRA Four Mile Interceptor, Phase 24 Segments 3 & 4, Sewer Archaeological Survey	Polk	\$37,359
Snyder Associates: WRA Four Mile Interceptor, Phase 23 Segments 4 & 5, Sewer Archaeological Survey	Polk	\$36,106
GSS: cell tower archaeological surveys	multiple	\$32,800
A. Leo Pelds Engineering Company: Moss Green Urban Development Archaeological Survey	Johnson	\$32,486
FEMA City of Iowa City: 2008 Flood Demolition Archaeological Monitoring	Johnson	\$28,000
DNR HRDP/REAP Grant: Archaeological Investigations at Iowaville 13VB124	Van Buren	\$26,464
FEMA/City of Coralville: 2008 Flood Demolition Archaeological Monitoring	Johnson	\$25,929
Shive-Hattery Inc.: FEMA Cedar Rapids Schools Administrative Building Archaeological Survey	Linn	\$21,254
Newbury Development, Inc.: Shamrock Hotel Demolition Archaeological Survey	Polk	\$20,085
City of Des Moines: Court and Grand Avenue Sewer Archaeological Trenching	Polk	\$19,000
Sherman Associates: Des Moines Metro Lofts Archaeological Survey	Polk	\$18,602
Shive-Hattery Inc.: Louisa County Interpretive Center at Langwood Archaeological Survey	Louisa	\$16,600
DNR/ WRA: Four Mile Interceptor Sewer Phase 23 Segments 2 & 3 Archaeological Survey	Polk	\$15,000
Tallgrass Historians: City of Ottumwa, West Area Sewer Separation, North Basin Archaeological Assessment	Wapello	\$14,054
Veenstra & Kimm: Keokuk, Rand Park Sewer Archaeological Survey	Lee	\$13,981
Tallgrass Historians: City of Ottumwa, West Area Sewer Separation, Richmond Avenue Archaeological Assessment	Wapello	\$12,480
DNR Lakes and Reservoirs: Lake Darling Stage 2 Archaeological Survey	Washington	\$12,394
NPS: Cooperative Agreement for Kimball Site NHL Nomination	Plymouth	\$9,721
MVEC RUS: RUS 318 Archaeological Survey	Jones	\$8,500
Kirkham Michael & Associates: HUD/EPA Minburn Sewer Lagoon Archaeological Survey	Dallas	\$8,375
City of Fort Madison: Water Transmission Line Archaeological Survey	Lee	\$7,685
IDALS: Mine Reclamation Archaeological Survey	Mahaska, Marion	\$6,230
DNR State Parks: Bellevue State Park Nelson and Dyas Units Water Line Archaeological Survey	Jackson	\$5,004
FEMA/Johnson County: Driftwood Lane Demolition Archaeological Monitoring	Johnson	\$4,911
FEMA/City of Coralville: Flood Relocation of Parks and Transit Buildings Archaeological Survey	Johnson	\$4,836
Indiana DNR-DHPA: Acquiring History at Spring Mill State Park (with Indiana University)	Lawrence (Indiana)	\$4,831
DNR State Parks: Union Grove State Park Campground Renovations Archaeological Survey	Tama	\$4,547
DNR State Parks: Stephens State Forest Unionville Unit Dike/Sediment Basin Phase I Archaeological Survey	Davis	\$4,394

Table 5. Continued.

Project by Program	County	Award
IDALS: Wetland Archaeological Survey	Buena Vista, Dickinson, Sac	\$4,238
IDALS: Wetland Archaeological Survey	Carroll, Dallas	\$4,057
City of Waukon: HUD Archaeological Survey	Allamakee	\$3,706
DNR State Parks: Wildcat Den State Park Utility and Other Improvements Archaeological Survey	Muscatine	\$3,660
DNR State Parks: Pikes Peak State Park Well Archaeological Survey	Clayton	\$3,056
DNR State Parks: Lake of Three Fires State Park Restroom and Water Lines Archaeological Survey	Taylor	\$3,009
DNR WMA: Rock Creek WMA Young Tract Archaeological Survey	Jasper	\$2,876
Foley Construction : ACOE Lake Odessa Borrow Sites Archaeological Survey	Louisa	\$2,692
DNR State Parks: Lacey-Keosauqua State Park Gatehouse Improvements Archaeological Survey	Van Buren	\$2,595
FEMA/University of Iowa: 2008 Flood Recovery Hawkeye Court Apartments Archaeological Survey	Johnson	\$2,500
FEMA/University of Iowa: 2008 Flood Recovery Fine Arts West Archaeological Assessment	Johnson	\$2,322
DNR WMA: Indian Bluffs Archaeological Survey	Jones	\$2,277
DNR State Forestry: State Forest Nursery Geothermal Archaeological Survey	Story	\$1,993
FEMA/Warren County Highway Dept.: Nevada Culvert Archaeological Survey	Warren	\$1,870
DNR State Parks: Bellevue State Park Dyas Unit Utility Building Archaeological Survey	Jackson	\$1,447
DNR State Parks: Bellevue State Park Nelson Unit Utility Building Archaeological Survey	Jackson	\$1,447
DNR State Parks: Ambrose A. Call State Park Restroom and Utility Building Archaeological Survey	Kossuth	\$1,370
DNR State Parks: Stone State Park Restrooms Archaeological Survey	Woodbury	\$1,360
DNR State Parks: Lake MacBride State Park New Utilities Archaeological Survey	Johnson	\$1,131
Terracon: Iowa City Cell Tower Archaeological Survey	Johnson	\$1,050
DNR State Parks: Lake MacBride State Park New Flush Restroom Archaeological Survey	Johnson	\$960
DNR State Parks: Lake Darling State Park New Flush Restroom Archaeological Assessment	Washington	\$250
Subtotal		\$746,333
Geospatial Program		
The South Dakota State Historical Society: Develop Standards for Testing Buried Archaeological Deposits in South Dakota	South Dakota	\$39,763
TRC Solutions: Phase IA Geomorphological Assessment of Lewis and Clark Water Pipelines	statewide	\$9,060
Minnesota Historical Society: Survey to Assess the Status of Burial Mound Sites in Scott and Crow Wing Counties using Light Detection and Ranging LiDAR)	Crow Wing & Scott Counties, Minnesota	\$50,000
Tallgrass Historians L.C.: Phase III Geoarchaeology of 19 th Century Farm Lane	Dubuque	\$18,000
AECOM Environmental: Phase III Geoarchaeology of Prehistoric Sites Along Catfish Creek near Dubuque, Iowa	Dubuque	\$39,200
Dubuque, IA (City of): Supplemental to Geoarchaeological Subcontract, Bee Branch Sewer Reconstruction.	Dubuque	\$10,000
Subtotal		\$166,023
Highway Archaeology Program		
Iowa DOT: Highway Archaeology Program Annual Contract, 2010	statewide	\$1,926,755
Grand Total		\$2,854,434

Note: DOT = Department of Transportation; GPS = Global Positioning System; GSS = Groundwater Service and Supply, Inc.; FEMA = Federal Emergency Management Agency; DNR = Department of Natural Resources; HRDP = Historic Resource Development Program; SHSI = State Historical Society of Iowa; WRA = Waste-water Reclamation Authority; NPS = National Park Services; RUS = Rural Utilities Service; HUD = Housing and Urban Development; IDALS = Iowa Department of Agriculture and Land Stewardship; WMA = Wildlife Management Area; ACOE = Army Corps of Engineers; MVEC = Maquoketa Valley Electric Coop

Table 6. Permanent Staff Members, Fiscal Year 2010.

Name	Title	Division	Funding	%FTE
Lynn Alex	Education and Outreach Program Director	General Services	University/external	80
Mark Anderson	Project Archaeologist	Contract Services	external	100
Joe Artz	Geospatial Program Director	General Services	University/external	100
Richard Carlson	Architectural Historian	Contract Services	external	100
Angela Collins	Project Archaeologist	Contract Services	external	100
James Collins	Project Archaeologist	Contract Services	external	100
John Cordell	Repository Manager	General Services	University/external	100
Mary De La Garza	Systems Administrator	Contract Services	external	100
John Doershuk	Director, State Archaeologist	General Services	University	100
Colleen Eck	Site Records Manager	General Services	University/external	100
Alan Hawkins	Project Archaeologist	Contract Services	external	100
John Hedden	Project Archaeologist	Contract Services	external	100
Daniel Horgen	Assistant Project Archaeologist	Contract Service	external	100
Julianne Hoyer	Documents Curator	General Services	University/external	65.77
Marlin Ingalls	Architectural Historian	Contract Services	external	100
Linda Langenberg	Professional Departmental Assistant	General Services	University	100
Stephen Lensink	Associate Director	General Services	University	100
Robin Lillie	Skeletal Biologist	Research	University/external	100
Carl Merry	Highway Archaeology Program Director	Contract Services	external	100
Blane Nansel	Project Archaeologist	Contract Services	external	100
Amy Pegump	Research Administrator	General Services	University/external	100
Michael Perry	Project Archaeologist	Contract Services	external	100
Cynthia Peterson	Project Archaeologist	Contract Services	external	100
Melody Pope	General Contracts Program Director	Contract Services	external	100
Eloise Ramirez	Project Archaeologist	Contract Services	external	100
Melanie Riley	GIS Specialist	Contract Services	external	100
Shirley Schermer	Burials Program Director	Research	University	100
Maria Schroeder	Assistant Architectural Historian	Contract Services	external	100
W. Lane Shields	Project Archaeologist	Contract Services	external	100
William Whittaker	Project Archaeologist	Contract Services	external	100

Table 7. Complete Roster of Employees, Fiscal Year 2010.

Lynn Alex	John Doershuk	Bryan Kendall	Amy Pegump	Matthew Svenson
Mark Anderson	Kourtney Donohue	Phillip Kerr	Michael Perry	Jennifer Sweet
Joe Artz	Colleen Eck	Kurtis Kettler	Cynthia Peterson	Maria Tavaszi
Eleisha Barnett	Adam Epstein	Sean Kukral	Melody Pope	Richard Thompson
David Bartlett	Alex Foster	Heidi Lack	Eloise Ramirez	Sonja Thompson
Tricia Bender	Elizabeth Fox	Linda Langenberg	Kayla Resnick	Sarah Thompto
Teresa Brown	Nicole Geske	Stephen Lensink	Christy Rickers	Anton Till
Ross Byers	Nancy Halder	Robin Lillie	Melanie Riley	Kevin Verhulst
Richard Carlson	John Hall	Elizabeth Macken	M. Kate Rocheford	Lien Vu
Carrie Christman	Heidi Hanson	Kate Mascal	Shirley Schermer	David Wheeler
Angela Collins	Chérie Haury-Artz	Eric Menzel	Maria Schroeder	William Whittaker
James Collins	Alan Hawkins	Carl Merry	Sydney Schulz	John Willman
John Cordell	John Hedden	Elizabeth Miller	Clayton Schuneman	Christopher Williams
Bryce Coulter	Heather Henderson	Ashley Moore	Stacey Schwab	Alexander Woods
Andrew Creasey	Daniel Horgen	Blane Nansel	W. Lane Shields	Tahira Zaheen
Matthew Cretzmeyer	Katherine Hove	Adam Newman	Andrew Sorensen	Stefanie Zollo
Mikel Curry	Julianne Hoyer	Elizabeth Niec	Thomas Stoeffler	
Mary De La Garza	Marlin Ingalls	Jessica Peel-Austin	Lauretta Stringer	

Table 8. Students Participating in OSA Activities, Fiscal Year 2010

Name	Affiliation	Major	Year	Program
Work-Study Students				
Jessica Peel-Austin	U of I	History	Grad student	Burials
Ross Byers	U of I	English	Junior	Archives
Teresa Brown	Kirkwood	Office Assistant	2 nd year	Archives
Bryce Coulter	U of I	Political Science	Freshman	Archives
Adam Epstein	U of I	Anthropology	Freshman	Archives
Heidi Hanson	U of I	Speech and Hearing Sciences	Senior	HAP/GIS/GE
Heather Henderson	U of I	English	Sophomore	Archives
Katherine Hove	U of I	Chemistry	Freshman	Burials
Philip Kerr	U of I	Geoscience	Junior	Archives
Kurtis Kettler	U of I	Anthropology	Senior	Archives
Sean Kukral	Kirkwood	Paralegal	2 nd year	Archives
Elizabeth Macken	U of I	Anthropology/Business	Senior	Burials
Ashley Moore	U of I	Anthropology	Junior	Burials
Sydney Schultz	U of I	Art	Senior	Archives
Matthew Svenson	Kirkwood	Arch tech	2 nd year	Archives
Richard Thompson	Kirkwood	Business	Freshman	Archives
Sara Thompto	Kirkwood	Art Therapy	Junior	Archives
Tahira Zaheen	U of I	Biology	Junior	Archives
Stephanie Zollo	U of I	Anthropology	Junior	Archives
Student employees completing degree requirements using OSA resources				
Bryan Kendall	U of I	Anthropology	Grad student	GIS; GCP
David Wheeler	U of I	MFA Acting	Grad student	GIS
Kat Rocheford	U of I	Geoscience	Ph.D. candidate	GIS
Alexander Woods	U of I	Anthropology	Grad student	HAP; GIS
Christian Haughton	U of I	Anthropology	Grad student	Burials
Christopher Kimsey	U of I	Anthropology	Grad student	Burials
Meagan Thies	U of I	Anthropology	Senior honors thesis/ICRU	GIS
Mary Mortenson	Cornell	Anthropology	Senior	Lab
Veronica Mraz	U of I	Anthropology	Senior	Lab
Diane Eddie	UNI	Anthropology	Senior honors thesis	Burials
Student Volunteers				
Samantha Hunt	UNI	Anthropology	Senior	Lab
Montell Edgar	Cornell	Anthropology	Senior	Lab
Amy Schnitz	U of I	Anthropology	Senior	Burials
Sonja Thompson	Luther	Anthropology	Sophomore	Lab
Constantine Anton	Luther	Anthropology	Sophomore	Lab
Elizabeth Miller	Grinnell	Anthropology	Senior	Lab
Alex Foster	U of I	Anthropology	Sophomore	Lab

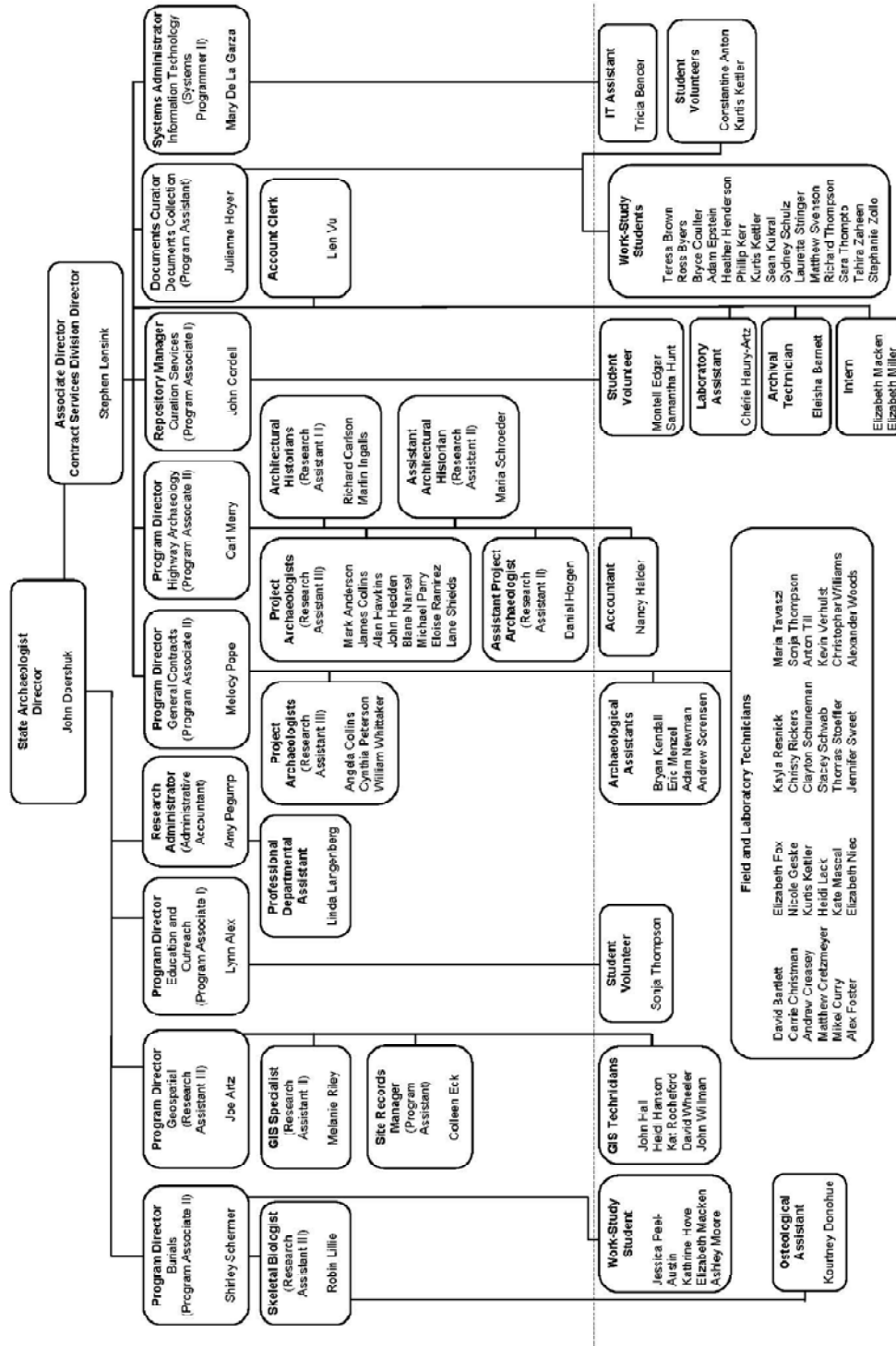


Figure 3. Organizational chart for the Office of the State Archaeologist, Fiscal Year 2010.

APPENDIX A
Office of the State Archaeologist
Strategic Plan: 2010–2016

OFFICE OF THE STATE ARCHAEOLOGIST

STRATEGIC PLAN: 2010–2016

JOHN F. DOERSHUK, DIRECTOR AND STATE ARCHAEOLOGIST

VISION

The Office of the State Archaeologist aspires to be a nationally recognized archaeological research center emphasizing interdisciplinary excellence.

CORE VALUES

In addition to supporting the core values stated in *Renewing The Iowa Promise: “Great Opportunities—Bold Expectations” The Strategic Plan for The University of Iowa 2010–2016*, the Office of the State Archaeologist is guided by the Society for American Archaeology’s *Principles of Archeological Ethics*. These principles are embodied in seven commitments: *stewardship, outreach, publication, preservation, training, accountability, and professionalism*. As a nationally recognized research center, the Office of the State Archaeologist promotes a dynamic intellectual environment, energetic student and public engagement, and advanced research. We actively contribute to the University’s mission and goals. Intellectual and cultural vitality is the foundation of a healthy research organization, and the Office of the State Archaeologist is dedicated to engaging multiple constituencies. Our mission fosters a diverse and vibrant learning environment, enhancing research, teaching, and public service.

MISSION

The mission of the Office of the State Archaeologist is to develop, disseminate, and preserve knowledge of Iowa’s human past through archaeological research, scientific discovery, public stewardship, service, and education.

GOAL 1: Create a learning experience about the human past that enriches the lives of undergraduates and helps them to become well-informed individuals, lifelong learners, engaged citizens, and productive employees and employers.

(Strategic Priority: Undergraduate student success)

- Increase the visibility and awareness of educational opportunities offered by the Office of the State Archaeologist (OSA) among the University student population.
- Attract a student population to the University and OSA through outreach and mentoring programs for high school students.
- Enhance affordability and promote effective year-round learning opportunities by offering student internships, work-study positions, and summer work opportunities.
- Provide undergraduates with high-quality learning experiences through independent study opportunities at introductory and specialized levels leading to honors theses.
- Provide field schools and laboratory research projects that incorporate interdisciplinary studies and/or international collaborations.

GOAL 2: Promote graduate and professional student participation in OSA research through cooperation with University graduate and professional programs.

(Strategic Priority: Graduate and professional student success)

- Explore and develop major interdisciplinary research topics related to archaeology domestically and internationally.
- Participate in cross-disciplinary graduate degree programs with other University departments and programs.
- Recruit graduate students from University departments and programs to work on OSA projects.
- Provide research opportunities for graduate students through access to OSA's extensive document and material collections.
- Conduct long-term archaeological projects with funded research opportunities for graduate and post-graduate scholars.

GOAL 3: Strengthen and expand OSA partnerships with public constituencies to advance understanding and appreciation about the human past and stewardship of archaeological resources and showcase the societal benefits of archaeological research and teaching for the citizens of Iowa.

(Strategic Priority: Better futures for Iowans; Strategic initiative: Public outreach and civic engagement)

- Expand partnerships with K–12 educators to promote diversity learning in Iowa history.
- Enhance lifelong learning opportunities and professional development on campus and via distance learning through partnerships between the OSA and other University departments.
- Sponsor public field schools in conjunction with OSA research or projects conducted by other partners.
- Promote OSA's public engagement programs and educational opportunities through television, radio, Internet, and print media.
- Produce and distribute self-guided tour brochures and regional guidebooks to publicly-accessible sites and facilities.

- Engage external partners to enhance archaeological stewardship and foster economic development and heritage tourism.
- Organize occasional conferences on archaeological and native studies topics, invite public and tribal participation, and prepare conference proceedings for peer-reviewed publication

GOAL 4: Recognize and illuminate the human diversity inherent in the past as manifested in the archaeological record and use that record for greater inclusion and participation of professionals and the public.

(Strategic Priorities: Knowledge and practice, Student success; Strategic Initiatives: Internationalization and diversity, Public outreach and civic engagement)

- Encourage new and highlight existing research that illustrates the diverse peoples in Iowa's archaeological record.
- Continue OSA's national leadership role in the respectful treatment of ancient human remains.
- Encourage the Regents' institutions and statewide college communities to use OSA resources in faculty and student research.
- Contribute to developing a network of university-based partners supporting cultural heritage research endeavors, especially with the American Indian and Native Studies Program and Museum Studies Program.
- Involve interested American Indians in Iowa archaeological investigations.
- Fulfill statutory obligations in maintaining the Burials Program, the State Archaeological Repository, and the State Archaeological Site File on behalf of the public interest.

GOAL 5: Strengthen the OSA's intellectual and cultural vitality within the University, Iowa, and nationally.

(Strategic Priority: Knowledge and practice, Better futures for Iowans; Strategic Initiatives: Efficiency and effectiveness, Scholarly inquiry and creative work, Internationalization and diversity)

- Attract and retain exceptional staff through competitive compensation and professional development support.
- Maintain and enhance gender and ethnic diversity opportunities.
- Provide an environment where innovation, flexibility, and collaboration are encouraged and rewarded.
- Market the OSA's excellence through peer-reviewed publications, large research projects, high-quality cultural resource management, and excellent customer service.
- Direct resources to existing and emerging programs based on their centrality to the OSA's mission and potential for sustained excellence.
- Secure new resources and financial support through philanthropic venues and enhance support for staff in securing internal and external grant funding.
- Maintain and extend stewardship of OSA collections through continued participation within the University of Iowa Collections Coalition initiative, especially as it vitally intersects with campus-wide disaster response procedures.

APPENDIX B
Public Presentations, Fiscal Year 2010

Staff Member	Sponsor	Location	Date	Topic	Attendance
Alex, Lynn	KCRG	Iowa City	August 17	Job shadowing for KCRG Contest Winner	3
Alex, Lynn	Washington County Conservation Board	Ainsworth	September 15	Master Conservation Class	15
Alex, Lynn	Horn Elementary 5-6 th Grade	Iowa City	September 25	Archaeology and Iowa's First Farmers	75
Alex, Lynn	IPTV	Statewide	October 22	Meet an Archaeologist	~40
Alex, Lynn	Lone Tree Junior High 8 th Grade	Lone Tree	October 29	Iowa's Native Peoples	~40
Alex, Lynn	State Historical Museum	Des Moines	March 17	Irishfest: Viking and Medieval Dublin	~50
Alex, Lynn	Belle Plaine Area Museum	Belle Plaine	April 25	IVB Maps and Exhibit Opening	~50
Alex, Lynn	Lemme Elementary School	Iowa City	May 5	Archaeology as Science	~50
Alex, Lynn	West High School	Iowa City	May 6	Careers in Archaeology	~30
Alex, Lynn	Lincoln Elementary School	Iowa City	May 19	Archaeology's Relevance in the 21 st Century	~25
Alex, Lynn	Price Laboratory School	Cedar Falls	June 16	Archaeology	16
Alex, Lynn	University of Northern Iowa Science and Math Academy	Cedar Falls	June 16	Careers in Archaeology	42
Alex, Lynn, John Doershuk, John Hall, Alan Hawkins, Courtney Donohue, Kevin Verhulst, Dan Horgen, and John Hedden	OSA: RAGBRAI EXPO	Council Bluffs	July 18	Archaeology on the Road Again	~6500
Alex, Lynn, and John Doershuk	Office of the State Archaeologist	Henderson	July 19	Archaeology on the Road Again	~50
Alex, Lynn, John Doershuk, Stephen Lensink, and Mary De La Garza	Office of the State Archaeologist	Moravia	July 23	Archaeology on the Road Again	~500
Alex, Lynn, Stephen Lensink, and Mary De La Garza	Office of the State Archaeologist	Packwood	July 24	Archaeology on the Road Again	~200
Alex, Lynn, and Chérie Haury-Artz	National Park Service, Herbert Hoover Library	West Branch	August 1	Archaeology on the Road Again	~200
Alex, Lynn, Chérie Haury-Artz, Joe Artz, Eleisha Barnett, and Elizabeth Fox	Sac and Fox Tribe of the Mississippi in Iowa	Tama	August 6	Archaeology on the Road Again	~240
Alex, Lynn, and Chérie Haury-Artz	State Historical Society of Iowa	Des Moines	September 30-October 1	Let's Celebrate Archaeology	~400

APPENDIX B Continued.

Staff Member	Sponsor	Location	Date	Topic	Attendance
Alex, Lynn and Chérie Haury-Artz	Herbert Hoover Library	West Branch	November 16	Teacher’s workshop: Resources for the Study of Iowa’s Native Peoples	~20
Alex, Lynn, Colleen Eck, Melanie Riley, John Hall, Chérie Haury-Artz, and Kayla Resnick	Workplace Learning Connection, Goodwill Heartland	Iowa City	January 26	Job-shadowing at the Office of the State Archaeologist	13
Alex, Lynn, Melody Pope, Joe Artz, Cindy Peterson, Mary De La Garza, and Stephen Lensink	Amana Historical Museum	Amana	March 4	IVB: Patterson Trading Post	~40
Alex, Lynn, Melody Pope, Joe Artz, Cindy Peterson, and Mary De La Garza	Amana Historical Museum	Amana	March 4	IVB: Patterson Trading Post	~40
Alex, Lynn	IPTV	Olin and Glenwood	April 6	Careers in Archaeology	~12
Alex, Lynn, Joe Artz, and Cherie Haury Artz	Belle Plaine Area Museum	Belle Plaine	April 24	IVB: Those Who Came Before, Famous Characters of the Iowa Valley	20
Artz, Joe	Geological Society of Iowa	Anamosa	October 9	Archaeology of Wapsipinicon State Park	50
Barnett, Eleisha	Iowa State Fair	Des Moines	August 23	UICC Booth and IAM	~400
Barnett, Eleisha, and Elizabeth Fox	Loess Hills Symposium				50
Collins, James	Office of the State Archaeologist Brown Bag Colloquium	Iowa City	February 5	Revisiting Late Prehistoric and Protohistoric Shell Masks from the Plains and Prairie Peninsula.	~40
Doershuk, John	Washington County Historical Society	Washington	August 4	Q&A: Lost Nation—The Ioway film	~100
Doershuk, John	Iowa Public Radio	Iowa City	October 15	Interview: OSA Celebrates 50 th Anniversary	~15,000
Doershuk, John	Midwest Archaeological Conference	Iowa City	October 17	Introduction for banquet speaker Dr. Patricia Sutherland, Curator of Arctic Archaeology/Conservateur Archeologie de l’arctique at the Canadian Museum of Civilization, speaking on “A New Perspective on Native/Norse Contact in Arctic Canada.”	140
Doershuk, John and Shirley Schermer	Annual Statewide Meeting of Iowa Rural Electric Cooperatives Managers	West Des Moines	October 2	Guest Speaker on Cultural Resources Compliance Procedures	~100
Haury-Artz, Chérie	Tap Root Nature Program – Monday After School Group	Iowa City	August 24	Ice Age Hunters and Native American Games	15
Haury-Artz, Chérie	Tap Root Nature Program – Thursday After School Group	Iowa City	September 3	Ice Age Hunters and Native American Games	14

APPENDIX B Continued.

Staff Member	Sponsor	Location	Date	Topic	Attendance
Haury-Artz, Chérie	Central Lee County Community Schools	OSA	September 18	Tour for TAG class from Fort Madison area	18
Haury-Artz, Chérie	College for Kids – Grant Wood AEA	Cedar Rapids	June 14-25	Archaeology and North American Prehistory	15
Haury-Artz, Chérie	Belin-Blank Center class	Iowa City	June 23	Tour of OSA/ Native American Toys and Games	13
Haury-Artz, Chérie	Vinton-Shellsburg School group tour	Iowa City	May 12	Tour of OSA	40
Haury-Artz, Chérie	Home school group	Iowa City	May 7	Tour of OSA	12
Haury-Artz, Chérie	Belin Blank Center WINGS class	Iowa City	April 17	Think Like an Archaeologist	10
Haury-Artz, Chérie	Hills and Heritage Festival	Thurman area	September 19-20	A Walk Back Through Time	42
Haury-Artz, Cherie Lynn Alex, and Mark Anderson	ICEC Winter Solstice Presentation	Honey Creek Resort Moravia	January 15-16	Archaeology and the Iowa CORE Curriculum	~30
Haury-Artz, Cherie, and Lynn Alex	Iowa Association of Naturalists		March 5	Native American Toys and Games	~30
Haury-Artz, Cherie, and Eleisha Barnett	Wellman Elementary School 4 th Grade	Wellman, Iowa	March 15	Native American Toys and Games, Native American Foods, Native American Story Telling, Native American Crafts	56
Perry, Michael	Iowa Archeological Society	Sutherland	May 1-2	Keyes and Orr at Waterman Creek	~50
Perry, Michael, and Daniel Horgen	Cedar Bridge Park, Mitchell County Conservation Board	Osage	September 27	Archaeology of the Upper Cedar Valley and artifact road show	34
Peterson, Cynthia	Glenwood Resource Center	Glenwood	October 22	Significance of the Glenwood Archaeological State Preserve	80
Peterson, Cynthia	Amana Heritage Museum	Amana	March 4	The Patterson Trading Post	80
Riley, Melanie	Office of the State Archaeologist Brown Bag Colloquium	Iowa City	January 22	The Utility of Airborne LiDAR for Archaeological Prospection in Iowa	50
Riley, Melanie and Joe Artz	Iowa Public Radio “The Exchange”	Iowa and portions of Nebraska, Missouri, Illinois and Minnesota	April 12	Laser Technology Identifies Burial Grounds	~17,500
Verhulst, Kevin	Carnegie Cultural Center	New Hampton	September 19	Artifact Road Show	35
Whittaker, William	Wickiup Hill Outdoor Learning Center	Toddville	Dec. 5	Frontier forts of Iowa	20
Whittaker, William	Office of the State Archaeologist Brown Bag Colloquium	Iowa City	Dec. 4	Adena and Hopewell Earthworks of Iowa	40
Whittaker, William	Fort Dodge History Center	Fort Dodge	Sept 30	Searching for Historic Fort Dodge, 1850-1853	50
Whittaker, William	Iowa Archeological Society	Peterson, Iowa	May 1	New Insights into the Mill Creek Kimball Village Site	50
Whittaker, William	Barnes and Noble	Cedar Rapids	Dec. 5	Signing for Frontier Forts of Iowa book	20
Whittaker, William	Borders Books	Davenport	April 10	Signing for Frontier Forts of Iowa book	20

APPENDIX C
Papers Presented at Professional Meetings, Fiscal Year 2010

Staff Member	Conference	Location	Date	Paper Title
Alex, Lynn	Iowa Science Teachers	Des Moines	October 28	Project Archaeology
Alex, Lynn	Society for American Archaeology	St. Louis	April 18	Invited discussant for SAA-PEC-sponsored forum "Saving the Planet...And Archaeology"
Alex, Lynn, and Chérie Haury Artz	Iowa Museum Association	Waterloo	October 5	Bringing Collections to Life
Artz, Joe	Midwest Archaeological Conference	Iowa City	October 17	Spatial and Temporal Patterns of Holocene Occupations in Alluvial and Colluvial Landscapes of the Salt River Valley, Missouri, USA: A Geoarchaeological Study.
Artz, Joe	Society for American Archaeology	St. Louis	April 16	Spatial and Temporal Patterns of Holocene Occupations in Alluvial and Colluvial Landscapes of the Salt River Valley, Missouri, USA: A Geoarchaeological Study.
Collins, Angela R.	Missouri Archaeological Month- Missouri Archaeological Society	Kirksville, MO	October 3	CRM Archaeology: REX and Site 23PI294
Collins, Angela R.	Missouri Archaeological Month- Missouri Archaeological Society	Kirksville, MO	October 3	Archaeological Investigations Along the Rockies Express East Gas Pipeline (REX-East) Corridor from Mexico to Louisiana, Northeastern Missouri (poster)
Collins, Angela R.	Midwest Archaeological Conference	Iowa City	October 16	A Sliver of Northeast Missouri Archaeology and Site 23PI294
Collins, James	Midwest Archaeological Conference	Iowa City	October 17	Skull and Headstones: Forensic Investigation of an Archaeological Hoax
Doershuk, John and John Cordell	Society for American Archaeology	St. Louis	April 17	<i>Project 1047: New Deal Archaeology in Iowa</i> . Paper presented in the Biennial Gordon Willey Symposium on the History of Archaeology: "Shovel Ready: Archaeology & Roosevelt's New Deal for America."
Haury Artz, Chérie, Mark Anderson, and Lynn Alex	Iowa Conservation Education Coalition: Winter Solstice	Moravia	January 16	Connecting Environmental Education to the Iowa Core Curriculum through Archaeology
Lillie, Robin M.	Midwest Archaeological Conference	Iowa City	October 17	They Moved the Burials in 1870: Salvage Excavations at Dubuque's Third Street Cemetery
Peterson, Cynthia	Meskwaki Symposium	Meskwaki Settlement	March 31	How Not to Find a Store, a House, or even an Entire Village: 1830s-1840s Meskwaki Archaeological Sites along the Iowa River
Peterson, Cynthia	Midwest Archaeological Conference	Iowa City	October 17	Early Forts and Tribal Interactions: Pre-1812
Pope, Melody	Society for American Archaeology	St. Louis	April 18	Chair and Presenter: with Rex Garniewicz, Archaeological Investigations at an Upland Mississippian Village in the White River Valley, East Fork, Dubois County, Indiana

APPENDIX C. Continued.

Staff Member	Conference	Location	Date	Paper Title
Pope, Melody	Midwest Archaeological Conference	Iowa City	October 16	Chair and Presenter: with Rex Garniewicz, Archaeological Investigations at an Upland Mississippian Village in the White River Valley, East Fork, Dubois County, Indiana
Riley, Melanie	Midwest Archaeological Conference	Iowa City	October 17	The Utility of LiDAR for Archaeological Prospection in the Midwest
Riley, Melanie	Midwest Archaeological Conference	Iowa City	October 17	Using Weights of Evidence for Predictive Modeling of Glenwood Earthlodges in Mills County, Iowa
Schermer, Shirley	National Association of Tribal Historic Preservation Officers	Durant, Oklahoma	August 10	Invited panel member for workshop on “Culturally Unidentifiable Native American Inventories Database (CUNAID)”
Schermer, Shirley	Iowa Burial Protection: Purposes, Laws, and Processes	Iowa City	September 16	Iowa Death Investigators Conference
Whittaker, William	Midwest Archaeological Conference	Iowa City	October 17	Frontier Forts of Iowa
Whittaker, William	Society for American Archaeology	St. Louis	April 15	Limitations of Expectations: Ground-Penetrating Radar Survey of Five Frontier Forts

APPENDIX D
Publications Appearing in Print, Fiscal Year 2010

Staff Member	Journal or Book	Article or Chapter Title	Publication Date
Alex, Lynn	<i>Newsletter of the Iowa Archeological Society</i> 59(2)	Meet Max Madsen: Future Archaeologist	2009
Alex, Lynn	<i>Newsletter of the Iowa Archeological Society</i> 59(2)	What's the Point?	2009
Alex, Lynn	<i>Newsletter of the Iowa Archeological Society</i> 59(2)	New Guided Walking Tour Brochure and Teaching Trunks on Fort Madison	2009
Alex, Lynn	<i>Newsletter of the Iowa Archeological Society</i> 59(2)	Loess Hills Communities to Host Archaeology Receptions	2009
Anderson, Mark	<i>Journal of the Iowa Archeological Society</i> , Vol. 56	Review of Bennett: Authenticating Indian Artifacts	2009
Artz, Joe	<i>Journal of Field Archaeology</i> , Vol. 35(1):19-39	The Neolithic-Early Bronze Age Mortuary Rockshelter of Bolores, Torres Vedras, Portugal	2010
Doershuk, John	<i>Newsletter of the Iowa Archeological Society</i> 59(2)	OSA news: Foreman-Griffith Site (13MM8) Canoe finds New Home in Red Oak	2009
Doershuk, John	<i>Newsletter of the Iowa Archeological Society</i> 59(2)	Fort Madison Redux: IAS Members Team with OSA to Explore the Old Fort	2009
Doershuk, John	<i>Newsletter of the Iowa Archeological Society</i> 59(3 & 4)	Metal Projectile Points	2009
Doershuk, John	<i>Journal of the Iowa Archeological Society</i> , Vol. 56	Ceramic Temper and Fire-Cracked Rock Selection at 13LN323, Palisades-Dows State Preserve, Linn County, Iowa (with P.L. Garvin and J.K. Clark)	2009
Eck, Colleen and John Hall, Kayla Resnick, and Melanie Riley	<i>Newsletter of the Iowa Archeological Society</i> 59(3 & 4)	OSA News: News from OSA's Geospatial Program	2009
Haury-Artz, Chérie E.	<i>Archaeology of the Sprunk Site (32CS4478)</i> by Michael G. Michlovic and George R. Holey, Minnesota State University-Moorhead	Appendix 1: Analysis of Identifiable Faunal Remains from the Sprunk Site (32CS4478)	July 2009
Horgen, Daniel	<i>Newsletter of the Iowa Archeological Society</i> 60(1)	What's the Point?	2010
Ingalls, Marlin	<i>Newsletter of the Iowa Archeological Society</i> 59(2)	Camp Harlan: Best Preserved Civil War Camp in Iowa	2009
Merry, Carl	<i>Newsletter of the Iowa Archeological Society</i> 59(3 & 4)	OSA News: OSA Submits Nominations to the National Register	2009
Perry, Michael	<i>Journal of the Iowa Archeological Society</i> , Vol. 56	Analysis and Commentary for reprint of Ellison Orr's Rock Shelters of Northeastern Iowa	2009
Riley, Melanie	<i>Newsletter of the Iowa Archeological Society</i> 59(3 & 4)	LiDAR: A 21 st -century Technology Shedding Light on Iowa Prehistory	2010
Whittaker, William	<i>Wikipedia.com</i>	expanded "Iowa Archaeology" and "Iowa Geology" and created new articles, "Indians of Iowa", "Environment of Iowa", "Charles R. Keyes", and "Maria Pearson"	2009-2010
Whittaker, William	<i>Newsletter of the Iowa Archeological Society</i> 60(1)	From the Editor	2010

APPENDIX E
Service as a Board, Commission, or Committee Member, Fiscal Year 2010

Staff Member	Board/Commission/Committee Name	Meeting Location	Date	Role/Goal/Mission of Organization
Alex, Lynn	Iowa Archeological Society Board of Directors	Des Moines	2 times annually	Outgoing Newsletter Editor
Alex, Lynn	Iowa Archeological Society, Editorial Review Board, <i>JIAS</i>	NA	NA	
Alex, Lynn	Society for American Archaeology, Public Education Committee	Variable	annually	
Alex, Lynn	Mississippi Valley Archaeology Center, Advisory Board	La Crosse, Wisconsin	4 times annually	
Alex, Lynn	<i>Project Archaeology</i> National Advisory Team Member and Iowa Coordinator	Variable	variable	
Alex, Lynn	Historic Contexts Committee of the Association of Iowa Archaeologists (AIA)	Marion	annually	advise the AIA on efforts to develop historic contexts for use of archaeologists across the state
Anderson, Mark	Iowa Academy of Science, Student Program Committee	Variable	Bi-annually; phone conference in January	The Student Programs Committee shall promote and supervise the student activities of the Iowa Junior Academy of Science in the area of pre-college science. The Committee shall act in partnership with the Director of the Iowa Junior Academy of Science in preparing the IJAS program for the Annual Academy Meeting. Recognition and awards for secondary school students involved in student programs shall be included under the purview of this committee.
Anderson, Mark	Big San Mound Advisory Committee	Muscatine	Bi-annually March and October	Promote archaeological and geosciences research, preservation, and public education outreach for the Big San Mound Preserve
Artz, Joe	State Map Advisory Board (Iowa Geological Survey)	Neal Smith Wildlife Refuge	September 2009	
Carlson, Richard J	State Nominations Review Committee, State Historical Society of Iowa	Des Moines	3-4 times annually	review and approve nominations for archaeological and architectural properties for listing on the National Register of Historic Places; review and approve archaeological and historic preservation grant applications
Cordell, John	University of Iowa Collections Coalition	Various University of Iowa campus locations	Monthly	support UI educational, research, and service goals by encouraging and advancing the professional care, documentation, and study of artifacts, specimens, and documents in the collections located in the University community, to make the collections meaningful and accessible to members of the University and general public, and to encourage the professional growth and development of the administrators, curators, and keepers of the collections

APPENDIX E. Continued.

Staff Member	Board/Commission/Committee Name	Meeting Location	Date	Goal/Mission of Organization
Doershuk, John	Iowa Archeological Society	Des Moines	March 13, 2010	Board Meeting
Doershuk, John	Iowa Archeological Society	Prairie Heritage Center	May 1, 2010	Board Meeting
Doershuk, John	Iowa Archeological Society	Iowa City	October 17, 2009	Board Meeting
Doershuk, John	University Research Council	Iowa City	4 times per semester	Publications Waiver subcommittee and chair, Authorship Policy subcommittee
Doershuk, John	Register of Professional Archaeologists	NA	variable	Field School Certification Review Committee
Hawkins, Alan	Iowa Archeological Society	Des Moines	March 13, 2010	Board Meeting
Hawkins, Alan	Iowa Archeological Society	Prairie Heritage Center	May 1, 2010	Board Meeting
Hawkins, Alan	Iowa Archeological Society	Iowa City	October 17, 2009	Board Meeting
Horgen, Daniel	Board, Association of Iowa Archaeologists	Marion and Anamosa	March 20, 2010 and June 5, 2010	Promote Iowa archaeological research; develop and refine guidelines for archaeological research; coordinate parties interested in or concerned about Iowa archaeology
Merry, Carl	State Nominations Review Committee, State Historical Society of Iowa	Des Moines	3-4 times annually	review and approve nominations for archaeological and architectural properties for listing on the National Register of Historic Places; review and approve archaeological and historic preservation grant applications
Perry, Michael	Iowa Archeological Society	Iowa City Des Moines Sutherland	October 17, 2009 March 13, 2010 May 1, 2010	Gather, record, publish, and interpret archaeological information
Peterson, Cynthia	Chair, State Preserves Advisory Board	Des Moines	4 times annually	advise the Iowa Department of Natural Resources on acquisition, dedication, and management of state preserves
Peterson, Cynthia	Historic Contexts Committee of the Association of Iowa Archaeologists (AIA)	Marion	annually	advise the AIA on efforts to develop historic contexts for use of archaeologists across the state
Schermer, Shirley	Advisory Board, <i>Dig Magazine</i>	NA	NA	
Schermer, Shirley	State Preserves Advisory Board	Variable	As Needed	Advise the State Preserves Advisory Board on archaeological issues related to state preserves
Schermer, Shirley	Iowa Archeological Society, Editorial Review Board, <i>JIAS</i>	NA	NA	
Schermer, Shirley	<i>Project Archaeology</i> National Advisory Team Member and Iowa Coordinator	Variable	variable	
Shields, Wm. Lane	West Branch Main Street Design Committee	West Branch	monthly	utilize appropriate design and preservation concepts, to enhance the visual quality of the downtown with an emphasis on buildings, signs, window displays, landscaping and environment.

APPENDIX E. Continued.

Staff Member	Board/Commission/Committee Name	Meeting Location	Date	Goal/Mission of Organization
Shields, Wm. Lane	Preservation Commission, City of West Branch	West Branch	quarterly	assist in the preservation and enhancement of the NRHP listed West Branch Historic District through partnerships with building owners and to serve as liaison between the City and the community
Shields, Wm. Lane	ad hoc committee to enroll in the Certified Local Government program, City of West Branch and the West Branch Main Street	West Branch, UI School of Urban and Regional Planning	monthly	preserve the shared historical heritage of West Branch in partnership with the State of Iowa and the National Park Service
Shields, Wm. Lane	Board, West Branch Heritage Foundation	West Branch	once or twice monthly	operate the West Branch Heritage Foundation Museum for the community
Shields, Wm. Lane	University of Iowa Collections Coalition	various University of Iowa campus locations	monthly	support the educational, research and service goals of the University of Iowa by encouraging and advancing the professional care, documentation and study of the artifacts, specimens and documents in the various collections located in the University community, to make the collections meaningful and accessible to members of the University and general public, and to encourage the professional growth and development of the administrators, curators and keepers of the collections.
Whittaker, William	Iowa Archeological Society	Peterson	May 1, 2010	Board Meeting

APPENDIX F
Scientific Publications Produced by the Office of the State Archeologist, Fiscal Year 2010

Contract Completion Reports

No.	Author	Report Title
1712	Menzel, Eric J., and Adam Newman	<i>Phase II Intensive Archaeological Investigation of the Proposed Stage I of the IDNR Lake Darling Renovation Project, Section 20, T74N-R9W, Washington County, Iowa. Contract Completion Report 1712. Office of the State Archaeologist, University of Iowa, Iowa City.</i>
1713	Whittaker, William E., and Adam Newman	<i>Phase I Intensive Archaeological Investigation of the Proposed Fort Madison Water Transmission Line Project, Section 11, T67N-R5W, Lee County, Iowa. Contract Completion Report 1713. Office of the State Archaeologist, University of Iowa, Iowa City.</i>
1714	Sorensen, Andrew C.	<i>Phase I Intensive Archaeological Investigation of the Proposed Communications Tower Location (a.k.a. US Cellular Colo #760822), Section 17, T83N-R21W, Story County, Iowa. Contract Completion Report 1714. Office of the State Archaeologist, University of Iowa, Iowa City.</i>
1715	Sorensen, Andrew C.	<i>Phase I Intensive Archaeological Investigation of the Proposed Communications Tower Location (a.k.a. US Cellular Saydel #760818), Section 3, T79N-R24W, Polk County, Iowa. Contract Completion Report 1715. Office of the State Archaeologist, University of Iowa, Iowa City.</i>
1716	Rickers, Christy S.	<i>Phase I Intensive Archaeological Investigation of the Proposed Lorimer Cell Tower Project (US Cellular Lorimer #438353) Section 2, T73N-R28W, Union County, Iowa. Contract Completion Report 1716. Office of the State Archaeologist, University of Iowa, Iowa City.</i>
1717	Rickers, Christy S.	<i>Phase I Intensive Archaeological Investigation of the Proposed Barnum Cell Tower Project (US Cellular Barnum #760782) Section 24, T89N-R30W, Webster County, Iowa. Contract Completion Report 1717. Office of the State Archaeologist, University of Iowa, Iowa City.</i>
1718	Menzel, Eric J., and Adam Newman	<i>Phase I Intensive Archaeological Investigation of the Proposed Stage II of the IDNR Lake Darling Renovation Project, Sections 21,22, 27, 28, and 29, T74N-R9W, Washington County, Iowa. Contract Completion Report 1718. Office of the State Archaeologist, University of Iowa, Iowa City.</i>
1719	Whittaker, William E., and Adam Newman	<i>Phase I Intensive Archaeological Investigation of the Proposed Tyco Electronics Iowa City Industrial Park Tower Project, Section 19, T79N-R5W, Johnson County, Iowa. Contract Completion Report 1719. Office of the State Archaeologist, University of Iowa, Iowa City.</i>
1720	Whittaker, William E., and Adam Newman	<i>Phase I Intensive Archaeological Investigation of the Proposed Geib Bidwell Tower Project, Section 31, T72N-R14W, Wapello County, Iowa. Contract Completion Report 1720. Office of the State Archaeologist, University of Iowa, Iowa City.</i>
1721	Whittaker, William E.	<i>Phase I Intensive Archaeological Investigation of the Proposed Coralville Parks and Transit Building Project, Section 5, T79N-R6W Coralville, Johnson County, Iowa. Contract Completion Report 1721. Office of the State Archaeologist, University of Iowa, Iowa City.</i>
1722	Whittaker, William E.	<i>Phase I Intensive Archaeological Investigation of the Proposed RiverStone Group Development Project, Section 24, T18N-R1E, Rock Island County, Illinois. Contract Completion Report 1722. Office of the State Archaeologist, University of Iowa, Iowa City.</i>
1723	Peterson, Cynthia L., and Adam Newman	<i>Phase I Intensive Archaeological Survey of a Proposed Rural Utilities Service Rome Rebuild Project 318 (a.k.a., Pole Locations for an Overhead Utility Line), T83-84-R3W, Jones County, Iowa. Contract Completion Report 1723. Office of the State Archaeologist, University of Iowa, Iowa City.</i>
1724	Pope, Melody K	<i>Phase I Intensive Archaeological and Geomorphological Survey of a Proposed Banner Shooting Range Westland Mitigation Area at the Red Rock Wildlife Area, Section 27 and 34, T77N-R22W, Warren County, Iowa. Contract Completion Report 1724. Office of the State Archaeologist, University of Iowa, Iowa City.</i>
1725	Kendall, Bryan S.	<i>Phase I Intensive Archaeological Survey of a Proposed Fenceline Location (a.k.a., Indian Bluffs WMA Fenceline), Section 33, T86N-R2W, Jones County, Iowa. Contract Completion Report 1725. Office of the State Archaeologist, University of Iowa, Iowa City.</i>
1726	Sorensen, Andrew C., and Adam Newman	<i>Phase I Intensive Archaeological Investigation of the Proposed Communications Tower Location (a.k.a. SEI Wireless, LLC E Centerville #163-0040) Project, Section 30, T69N-R17W, Appanoose County, Iowa. Contract Completion Report 1726. Office of the State Archaeologist, University of Iowa, Iowa City.</i>

APPENDIX F. Continued.

Contract Completion Reports. Continued.

No.	Author	Report Title
1727	Sorensen, Andrew C., and Adam Newman	<i>Phase I Intensive Archaeological Investigation of the Proposed Communications Tower Location (a.k.a. SEI Wireless, LLC Honey Creek Resort #163-0044) Project, Section 16, T70N-R18W, Appanoose County, Iowa. Contract Completion Report 1727. Office of the State Archaeologist, University of Iowa, Iowa City.</i>
1728	Sorensen, Andrew C., and Adam Newman	<i>Phase I Intensive Archaeological Investigation of the Proposed Communications Tower Location (a.k.a. SEI Wireless, LLC RRW#6 Moravia #163-0043) Project, Section 4, T70N-R17W, Appanoose County, Iowa. Contract Completion Report 1728. Office of the State Archaeologist, University of Iowa, Iowa City.</i>
1729	Sorensen, Andrew C., and Adam Newman	<i>Phase I Intensive Archaeological Investigation of the Proposed Communications Tower Location (a.k.a. SEI Wireless, LLC N Moulton #163-0041) Project, Section 28, T69N-R16W, Appanoose County, Iowa. Contract Completion Report 1729. Office of the State Archaeologist, University of Iowa, Iowa City.</i>
1730	Kendall, Bryan S., and William E. Whittaker	<i>Phase I Intensive Archaeological Investigation of the FEMA Park View Terrace Subdivision Demolition Project, Iowa City, Johnson County, Iowa. Contract Completion Report 1730. Office of the State Archaeologist, University of Iowa, Iowa City.</i>
1731	Till, Anton, and William E. Whittaker	<i>Archaeological Monitoring of the FEMA Edgewater Drive Demolition Project, Coralville, Johnson County, Iowa. Contract Completion Report 1731. Office of the State Archaeologist, University of Iowa, Iowa City.</i>
1732	Menzel, Eric J., and Melody Pope	<i>Data Recovery Plan for Site 13WS537, Lake Darling, Washington County, Iowa. Contract Completion Report 1732. Office of the State Archaeologist, University of Iowa, Iowa City.</i>
1733	Rickers, Christy S.	<i>Phase I Intensive Archaeological Investigation of the Proposed CREP Wetland Project, Section 3, T81N-R27W, Dallas County, Iowa. Contract Completion Report 1733. Office of the State Archaeologist, University of Iowa, Iowa City.</i>
1734	Sorensen, Andrew C.	<i>Phase I Intensive Archaeological Investigation of the Proposed Communications Tower Location (a.k.a. SEI Wireless Templeton N Blakesburg #163-0038), Section 25, T72N-R16W, Monroe County, Iowa. Contract Completion Report 1734. Office of the State Archaeologist, University of Iowa, Iowa City.</i>
1735	Sorensen, Andrew C., and Adam Newman	<i>Phase I Intensive Archaeological Investigation of the Proposed Communications Tower Location (a.k.a. Winnebago Coop Playground Joice #158-0018), Section 28, T99N-R22W, Worth County, Iowa. Contract Completion Report 1735. Office of the State Archaeologist, University of Iowa, Iowa City.</i>
1736	Sorensen, Andrew C., and Adam Newman	<i>Phase I Intensive Archaeological Investigation of the Proposed Communications Tower Location (a.k.a. I Wireless Vrbicek RL Cedar Knolls #IA0109), Section 18, T88N-R12W, Black Hawk County, Iowa. Contract Completion Report 1736. Office of the State Archaeologist, University of Iowa, Iowa City.</i>
1737	Sorensen, Andrew C.	<i>Phase I Intensive Archaeological Investigation of the Proposed Communications Tower Location (a.k.a. I Wireless Harvest Farm Goldfinch #IA0231), Section 12, T79N-R6W, Johnson County, Iowa. Contract Completion Report 1737. Office of the State Archaeologist, University of Iowa, Iowa City.</i>
1738	Menzel, Eric J., and Adam Newman	<i>Phase I Intensive Archaeological Investigation of the Proposed Fence Removal Project at the Brockshink Tract (GU12) in Bays Branch WPA, Sections 14, 22, and 23, T80N-R3W, Guthrie County, Iowa. Contract Completion Report 1738. Office of the State Archaeologist, University of Iowa, Iowa City.</i>
1739	Menzel, Eric J., Andrew C. Sorensen, and William E. Whittaker	<i>Phase I Intensive Archaeological Investigation of the Proposed Lake Odessa Borrow Sites Project, Section 36, T75N-R3W and Section 11, T73N-R2W, Louisa County, Iowa. Contract Completion Report 1739. Office of the State Archaeologist, University of Iowa, Iowa City.</i>
1740	Sorensen, Andrew C., and Adam Newman	<i>Phase I Intensive Archaeological Investigation of the Proposed Communication Tower Location (Webster Calhoun Coop Tele Assoc Stark Property Duncombe #151-0020), Section 4, T88N-R27W, Webster County, Iowa. Contract Completion Report 1740. Office of the State Archaeologist, University of Iowa, Iowa City.</i>

APPENDIX F. Continued.

Contract Completion Reports. Continued.

No.	Author	Report Title
1741	Sorensen, Andrew C., and Adam Newman	<i>Phase I Intensive Archaeological Investigation of the Proposed Communications Tower Location (a.k.a. Webster Calhoun Coop Tele Assoc Becker Farm Ft Dodge W #151-0024) City of Iowa City, Section 18, T89N-R28W, Webster County, Iowa. Contract Completion Report 1741. Office of the State Archaeologist, University of Iowa, Iowa City.</i>
1742	Sorensen, Andrew C	<i>Phase I Intensive Archaeological Investigation of the Proposed Communications Tower Location (a.k.a. Don's Big Value Anamosa DT #017-0009) Project, Section 2, T84N-R4W, Jones County, Iowa. Contract Completion Report 1742. Office of the State Archaeologist, University of Iowa, Iowa City.</i>
1743	Menzel, Eric J., and Adam Newman	<i>Phase I Intensive Archaeological Investigation of the Proposed Pikes Peak New Well and Water Line Project, Section 35, T95N-R3W, Clayton County, Iowa. Contract Completion Report 1743. Office of the State Archaeologist, University of Iowa, Iowa City.</i>
1744	Rickers, Christy S.	<i>Phase I Intensive Archaeological Investigation of the Proposed Minburn Sewage Lagoon Project, Section 7, T80N-R27W, Dallas County, Iowa. Contract Completion Report 1744. Office of the State Archaeologist, University of Iowa, Iowa City.</i>
1745	Sorensen, Andrew C., and Adam Newman	<i>Phase I Intensive Archaeological Investigation of the Proposed Communications Tower Location (a.k.a. Winnebago Coop Lovick Winnebago River #158-0020), Section 1, T97N-R23W, Hancock County, Iowa. Contract Completion Report 1745. Office of the State Archaeologist, University of Iowa, Iowa City.</i>
1746	Sorensen, Andrew C., and Adam Newman	<i>Phase I Intensive Archaeological Investigation of the Proposed Warren County Highway Department Culvert Replacement Project L-J1801F-93-91, Sections 7 and 18, T75N-R22W, Warren County, Iowa. Contract Completion Report 1746. Office of the State Archaeologist, University of Iowa, Iowa City.</i>
1747	Rickers, Christy S.	<i>Phase I Intensive Archaeological Investigation of the Proposed Churdan Cell Tower Project (USC Churdan #393332) Section 20, T85N-R31W, Greene County, Iowa. Contract Completion Report 1747. Office of the State Archaeologist, University of Iowa, Iowa City.</i>
1748	Sorensen, Andrew C.	<i>Phase I Intensive Archaeological Investigation of Two Abandoned Coal Mine Reclamation Project Areas in Mahaska County, Iowa. Contract Completion Report 1748. Office of the State Archaeologist, University of Iowa, Iowa City.</i>
1749	Whittaker, William E.	<i>Ground-Penetrating Radar Survey of the 13DB575 Farmstead, Section 4, T88N-R2E, Dubuque County, Iowa, Part of the Southwest Arterial Highway Project. Contract Completion Report 1750. Office of the State Archaeologist, University of Iowa, Iowa City.</i>
1750	Whittaker, William E.	<i>Digital Mapping Survey of the Malchow Mound Group (13DM4) Des Moines County, Iowa. Contract Completion Report 1750. Office of the State Archaeologist, University of Iowa, Iowa City.</i>
1751	Rickers, Christy S.	<i>Phase I Intensive Archaeological Investigation of the Proposed CREP Wetland Project, Section 15, T85N-R34W, Carroll County, Iowa. Contract Completion Report 1751. Office of the State Archaeologist, University of Iowa, Iowa City.</i>
1752	MacLeish, Barbara, and William E. Whittaker	<i>Historical Insights into Montrose, Lee County, Iowa, Including Information on the 1838 Isaac T. Woods Survey, Nearby Sauk Villages, and Fort Des Moines No. 1. Contract Completion Report 1752. Office of the State Archaeologist, University of Iowa, Iowa City.</i>
1753	Sorensen, Andrew C., and Cynthia L. Peterson	<i>Phase I Intensive Archaeological Investigation of the Proposed Communications Tower Location (a.k.a. i wireless Osky High [Finarty] #IA0530), Section 17, T75N-R15W, Mahaska County, Iowa. Contract Completion Report 1753. Office of the State Archaeologist, University of Iowa, Iowa City.</i>
1754	Till, Anton, and William E. Whittaker	<i>Archaeological Monitoring of the WRA Four Mile Interceptor Sewer, Phase 23-Segment 1 Project, Sections 7 and 8, T78N-R23W, Polk County, Iowa. Contract Completion Report 1754. Office of the State Archaeologist, University of Iowa, Iowa City.</i>
1755	Collins, Angela R.	<i>Phase I Intensive Archaeological and Geomorphological Investigation of the Proposed Four Mile Creek Interceptor Sewer Project, Phase 24, Segments 3 & 4, T80N-R23W, Polk County, Iowa. Contract Completion Report 1755. Office of the State Archaeologist, University of Iowa, Iowa City.</i>
1756	Rickers, Christy S.	<i>Phase I Intensive Archaeological Investigation of the Proposed Bridgewater Cell Tower Project (087-0020), Section 32, T75N-R33W, Adair County, Iowa. Contract Completion Report 1756. Office of the State Archaeologist, University of Iowa, Iowa City.</i>

APPENDIX F. Continued.

Contract Completion Reports. Continued.

No.	Author	Report Title
1757	Rickers, Christy S.	<i>Phase I Intensive Archaeological Investigation of the Proposed Massena Cell Tower Project (087-0021B), Section 33, T75N-R34W, Cass County, Iowa. Contract Completion Report 1757. Office of the State Archaeologist, University of Iowa, Iowa City.</i>
1758	Rickers, Christy S.	<i>Phase I Intensive Archaeological Investigation of the Proposed Mt. Etna Cell Tower Project (087-0022A), Section 21, T73N-R34W, Adams County, Iowa. Contract Completion Report 1758. Office of the State Archaeologist, University of Iowa, Iowa City.</i>
1759	Whittaker, William E.	<i>Phase I Intensive Archaeological and Geoarchaeological Investigation of the Proposed Metro Lofts Project, Des Moines, Polk County, Iowa. Contract Completion Report 1759. Office of the State Archaeologist, University of Iowa, Iowa City.</i>
1760	Merry, Carl and Stephen C. Lensink	<i>Annual Report of The University of Iowa Highway Archaeology Program for the Calendar Year 2009. Contract Completion Report 1760. Office of the State Archaeologist, University of Iowa, Iowa City.</i>
1761	Artz, Joe Alan, and Melanie A. Riley	<i>A Phase IA Archaeological Assessment of Portions of the University of Iowa Campus East of the Iowa River Affected by Proposed Flood Mitigation Measures. Contract Completion Report 1761. Office of the State Archaeologist, The University of Iowa, Iowa City.</i>
1762	Kendall, Bryan S.	<i>Phase I Intensive Archaeological Survey of Whitewater Canyon WMA and Lost Canyon WMA, Jones, Dubuque, and Jackson Counties, Iowa. Contract Completion Report 1762. Office of the State Archaeologist, University of Iowa, Iowa City.</i>
1763	Christman, Carrie, and William E. Whittaker	<i>Preliminary Archaeological Testing for the Court Avenue Storm Sewer Separation Project, Court and Grand Avenues, Des Moines, Polk County, Iowa. Contract Completion Report 1763. Office of the State Archaeologist, University of Iowa, Iowa City.</i>
1764	Artz, Joe A., and Cynthia L. Peterson	<i>Phase IA Archaeological Reconnaissance and Geoarchaeological Assessment of the Proposed West Area Sewer Separation (North Basin) Project, City of Ottumwa, Wapello County, Iowa. Contract Completion Report 1764. Office of the State Archaeologist, University of Iowa, Iowa City.</i>
1765	Sorensen, Andrew C.	<i>Phase I Intensive Archaeological Investigation of the Proposed Communications Tower Location (a.k.a. Wapsi Wireless [iwireless] Camanche #161-0020) Project, Section 27, T81N-R6W, Clinton County, Iowa. Contract Completion Report 1765. Office of the State Archaeologist, University of Iowa, Iowa City.</i>
1766	Artz, Joe Alan, and Melanie A. Riley	<i>Geoarchaeological Overview of the Lewis and Clark Rural Water System in Lyon and Sioux Counties, Iowa, Minnehaha and Union Counties, South Dakota, and Nobles and Rock Counties, Minnesota. Contract Completion Report 1766. Office of the State Archaeologist, University of Iowa, Iowa City.</i>
1767	Kendall, Bryan S.	<i>Phase I Intensive Archaeological Investigation of the Proposed Dike and Sediment Basin Construction Area in the Unionville Unit of Stephens State Forest, Section 19, T70N-R15W, Davis County. Contract Completion Report 1767. Office of the State Archaeologist, University of Iowa, Iowa City.</i>
1768	Kendall, Bryan S.	<i>Phase I Intensive Archaeological Investigation of a Proposed Facility Improvement at Lake MacBride State Park, Section 27, T81N-R6W, Johnson County, Iowa. Contract Completion Report 1768. Office of the State Archaeologist, University of Iowa, Iowa City.</i>
1769	Sorensen, Andrew C.	<i>Phase I Intensive Archaeological Investigation of the Proposed Communications Tower Location (a.k.a. Webster Calhoun Coop. Tele. Co. [iwireless] Hwy 169 Donney Farm #151 -0019) Project, Section 14, T90N-R29W, Webster County, Iowa. Contract Completion Report 1769. Office of the State Archaeologist, University of Iowa, Iowa City.</i>
1770	Sorensen, Andrew C.	<i>Phase I Intensive Archaeological Investigation of Two Proposed Facility Improvement Areas at Ambrose A. Call State Park, Sections 10 and 15, T95N-R29W, Kossuth County, Iowa. Contract Completion Report 1770. Office of the State Archaeologist, University of Iowa, Iowa City.</i>
1771	Sorensen, Andrew C.	<i>Phase I Intensive Archaeological Investigation of Two Proposed Facility Improvement Areas in Stone State Park, Section 1, T89N-R48W, Woodbury County, Iowa. Contract Completion Report 1771. Office of the State Archaeologist, University of Iowa, Iowa City.</i>
1772	Artz, Joe Alan	<i>Phase IA Archaeological Assessment of a Proposed Flood Mitigation Project for Art Building West, University of Iowa, Iowa City, Iowa. Contract Completion Report 1772. Office of the State Archaeologist, The University of Iowa, Iowa City.</i>

APPENDIX F. Continued.

Contract Completion Reports. Continued.

No.	Author	Report Title
1773	Whittaker, William E., and Adam Newman	<i>Phase I Intensive Archaeological Investigation of the Bellevue State Park Water System Replacement Project, Sections 19 and 29, T86N-R5E, Jackson County, Iowa. Contract Completion Report 1773. Office of the State Archaeologist, University of Iowa, Iowa City.</i>
1774	Kendall, Bryan S.	<i>Phase I Intensive Archaeological Investigation of the Proposed Louisa County Interpretive Center at Langwood, Section 25, T75N-R3W, Louisa County, Iowa. Contract Completion Report 1774. Office of the State Archaeologist, University of Iowa, Iowa City.</i>
1775	Peterson, Cynthia L., and Adam Newman	<i>Phase I Intensive Archaeological Survey of Proposed Campground Renovations at Union Grove State Park, Section T85N-R16W, Tama County, Iowa. Contract Completion Report 1775. Office of the State Archaeologist, University of Iowa, Iowa City.</i>
1776	Rickers, Christy S.	<i>Phase I Intensive Archaeological Investigation of the Proposed Odebolt Cell Tower Project (a.k.a USC #39333), Section 27, T87N-R38W, Sac County, Iowa. Contract Completion Report 1776. Office of the State Archaeologist, University of Iowa, Iowa City.</i>
1777	Rickers, Christy S.	<i>Phase I Intensive Archaeological Investigation of the Proposed Early Cell Tower Project (a.k.a. USC #393336), Section 5, T88N-R37W, Sac County, Iowa. Contract Completion Report 1777. Office of the State Archaeologist, University of Iowa, Iowa City.</i>
1778	Sorensen, Andrew C.	<i>Phase I Intensive Archaeological Investigation of the Proposed Buena Vista County Wetland Reclamation Project, Section 34, T92N-R37W, Buena Vista County, Iowa. Contract Completion Report 1778. Office of the State Archaeologist, University of Iowa, Iowa City.</i>
1779	Sorensen, Andrew C.	<i>Phase I Archaeological Investigation of the Proposed Communications Tower Location (a.k.a. US Cellular SE 22nd Street Des Moines #760854), Section 14 T78N-R24W, Polk County, Iowa. Contract Completion Report 1779. Office of the State Archaeologist, University of Iowa, Iowa City.</i>
1780	Rickers, Christy S.	<i>Phase I Intensive Archaeological Investigations of a Proposed IDALS Wetland Project, Section 29, T87N-R37W, Sac County, Iowa. Contract Completion Report 1780. Office of the State Archaeologist, University of Iowa, Iowa City.</i>
1781	Sorensen, Andrew C.	<i>Phase I Intensive Archaeological Investigation of the Proposed Hawkeye Court Apartments Demolition Project, Section 8, T79N-R6W, Johnson County, Iowa. Contract Completion Report 1781. Office of the State Archaeologist, University of Iowa, Iowa City.</i>
1782	Cretzmeyer, Matthew M., Adam Newman, and Cynthia L. Peterson	<i>Phase I Intensive Archaeological Survey of the Bellevue State Park Water Line Replacement Project, Sections 19 and 29, T86N-R5E Jackson County, Iowa. Contract Completion Report 1782. Office of the State Archaeologist, University of Iowa, Iowa City.</i>
1783	Resnick, Kayla D.	<i>Phase I Intensive Archaeological Investigation of a Proposed Cell Tower Location (a.k.a. USC Scranton #393337), Section 2, T83N-R32W, Greene County, Iowa. Contract Completion Report 1783. Office of the State Archaeologist, University of Iowa, Iowa City.</i>
1784	Resnick, Kayla D.	<i>Phase I Intensive Archaeological Investigation of a Proposed Cell Tower Location (a.k.a. i-wireless Lakeview #030-0002), Section 32, T87N-R36W, Sac County, Iowa. Contract Completion Report 1784. Office of the State Archaeologist, University of Iowa, Iowa City.</i>
1785	Rickers, Christy S.	<i>Phase I Intensive Archaeological Investigation for a Proposed Modern Latrine and Associated Utilities in Lake of Three Fires State Park, Section 6, T68N-R33W, Taylor County, Iowa. Contract Completion Report 1785. Office of the State Archaeologist, University of Iowa, Iowa City.</i>
1786	Riley, Melanie A., Joe Alan Artz, William E. Whittaker, Robin M. Lillie, and Andrew C. Sorensen	<i>Archaeological Prospection for Precontact Burial Mounds Using Light Detection and Ranging (LiDAR) in Scott and Crow Wing Counties, Minnesota. Contract Completion Report 1768. Office of the State Archaeologist, University of Iowa, Iowa City.</i>
1787	Peterson, Cynthia L., and Adam Newman	<i>Phase I Intensive Archaeological Investigation of Proposed Walkway and Pedestal Construction Areas at Lacey-Keosauqua State Park, Section 34, T69N-R10W, Van Buren County, Iowa. Contract Completion Report 1787. Office of the State Archaeologist, University of Iowa, Iowa City.</i>

APPENDIX F. Continued.

Contract Completion Reports. Continued.

No.	Author	Report Title
1788	Ingalls, Marlin	<i>Hawkeye Court Apartments--Architectural History Evaluation--CCR #1788. Contract Completion Report 1788. Office of the State Archaeologist, University of Iowa, Iowa City.</i>
1789	Peterson, Cynthia L., Adam Newman, and Matthew M. Cretzmeyer	<i>Phase I Intensive Archaeological Investigation of Proposed Utilities and Other Improvements at Wildcat Den State Park, Sections 17 and 21, T77N-R01E, Muscatine County, Iowa. Contract Completion Report 1789. Office of the State Archaeologist, University of Iowa, Iowa City.</i>
1790 Cindy	Peterson, Cynthia L., and Adam Newman	<i>Phase I Intensive Archaeological Survey of a Proposed Geothermal System Installation at the Ames State Forest Nursery, 2404 South Duff Avenue, City of Ames, Story County, Iowa. Contract Completion Report 1790. Office of the State Archaeologist, University of Iowa, Iowa City.</i>
1791 Angela	Collins, Angela R., and Adam Newman	<i>Phase I Intensive Archaeological Investigation of the Proposed Cedar Rapids Community Schools Administrative Building Project, Section 18, T83N-R7W, Linn County, Iowa. Contract Completion Report 1791. Office of the State Archaeologist, University of Iowa, Iowa City.</i>
1792	Till, Anton, and William E. Whitaker	<i>Archaeological Monitoring of the Driftwood Lane FEMA Demolition Project, Section 34, T79N-R6W, Johnson County, Iowa. Contract Completion Report 1792. Office of the State Archaeologist, University of Iowa, Iowa City.</i>
1793	Sorensen, Andrew C.	<i>Phase I Archaeological Investigation of the Proposed Communications Tower Location (a.k.a. i wireless/FWC Communications Northside Mason City #178-0010), Section 3, T96N-R20W, Cerro Gordo County, Iowa. Contract Completion Report 1793. Office of the State Archaeologist, University of Iowa, Iowa City.</i>
1794	Collins, Angela R., Adam Newman, and Joe A. Artz	<i>Phase I Intensive Archaeological and Geomorphological Investigation of the Proposed Four Mile Creek Interceptor Sewer Project, Phase 23, Segments 4 & 5, T79N-R23W, Between 46th Avenue and Easton Boulevard, City of Des Moines, Polk County, Iowa. Contract Completion Report 1794. Office of the State Archaeologist, University of Iowa, Iowa City.</i>
1795	Sorensen, Andrew C.	<i>Phase I Archaeological Investigation of the Proposed Communications Tower Location (a.k.a. i wireless Cedar Bluff #162-0005), Section 27, T81N-R4W, Cedar County, Iowa. Contract Completion Report 1795. Office of the State Archaeologist, University of Iowa, Iowa City.</i>
1796	Sorensen, Andrew C.	<i>Phase I Archaeological Investigation of the Proposed Communications Tower Location (a.k.a. i wireless Irwins [Linn County Rural Electric Cooperative] #IA-0102), Section 28, T84N-R6W, Linn County, Iowa. Contract Completion Report 1796. Office of the State Archaeologist, University of Iowa, Iowa City.</i>
1797	Resnick, Kayla D.	<i>Phase I Intensive Archaeological Investigation of the Proposed Rock Creek WMA, Young Tract Building Disposal Project, Section 4, T80N-R17W, Jasper County, Iowa. Contract Completion Report 1797. Office of the State Archaeologist, University of Iowa, Iowa City.</i>
1798	Kendall, Bryan S.	<i>Phase I Intensive Archaeological Investigations of a Proposed Utilities Installation and Facility Improvement at Lake MacBride State Park, Section 27, T81N-R6W, Johnson County, Iowa. Contract Completion Report 1798. Office of the State Archaeologist, University of Iowa, Iowa City.</i>

APPENDIX F. Continued.

Project Completion Reports

Vol., No.	Author	Title
32, 6	Anderson, Mark L.	<i>A Phase I Archaeological Survey of Primary Roads Project STPN-169-8(45)--2J-55, Kossuth County, Iowa</i>
32, 8	Collins, James M.	<i>A Phase I Archaeological Survey of Primary Roads Project HSIPX-330-2(75)--3L-64, a.k.a. PIN 05-64-330-010, Marshall County, Iowa</i>
32, 9	Shields, Wm. Lane	<i>A Phase I Archaeological Survey of Primary Roads Project BRF-006-8(33)--38-70, Muscatine County, Iowa</i>
32, 10	Perry, Michael J.	<i>A Phase I Archaeological Survey of Primary Roads Project FSSN-071-6(45)--3T-81, a.k.a. PIN 08-81-071-010, Sac County, Iowa</i>
32, 11	Anderson, Mark L.	<i>A Phase I Archaeological Survey of Primary Roads Project FSSN-151-1(20)--38-48, Iowa County, Iowa</i>
32, 12	Hedden, John G.	<i>A Phase I Archaeological Survey of Primary Roads Project FSSN-069-1(36)--38-27, a.k.a. PIN 08-27-069-010, Decatur County, Iowa</i>
32, 13	Collins, James M.	<i>A Phase I Archaeological Survey of Primary Roads Project STPN-148-1(24)--2J-87, Taylor County, Iowa</i>
32, 14	Ingalls, Marlin R.	<i>A Phase I Historic Architectural Survey of Primary Roads Project HSIPX-330-2(75)--3L-64, a.k.a. PIN 05-64-330-010, Marshall County, Iowa</i>
32, 15	Perry, Michael J.	<i>A Phase I Archaeological Survey of Previously Unsurveyed Parcels for Primary Roads Project NHSN-169-6(79)--2R-94, a.k.a. PIN 05-94-169-010, Webster and Humboldt Counties, Iowa</i>
32, 16	Ingalls, Marlin R.	<i>Iowa's Historic Automobile Roads: A National Register Study of Pre-1948 Arterial Highways, Prepared for Primary Roads Project NHS-61-4(55)--19-70, Muscatine County, Iowa</i>
32, 17	Perry, Michael J.	<i>A Phase I Archaeological Survey of Primary Roads Project NHSX-65-4(127)--3H-77, a.k.a. PIN 77-065-030-09, Polk County, Iowa</i>
33, 1	Hedden, John G.	<i>A Phase I Archaeological Survey of Primary Roads Project BRFN-65-6(42)--39-42, a.k.a. PIN 00-42-065-040, Hardin County, Iowa</i>
33, 2	Collins, James M.	<i>A Phase I Archaeological Survey of Primary Roads Project HSIPX-330-1(26)--3L-50, Jasper County, Iowa</i>
33, 3	Hedden, John G.	<i>A Phase I Archaeological Survey of Primary Roads Project BRF-069-7(30)--38-99, a.k.a. PIN 08-99-069-010, Wright County, Iowa</i>
33, 4	Hawkins, Alan J.	<i>A Phase I Archaeological Survey of Primary Roads Project BRF-130-2(14)--38-16 a.k.a. PIN 08-16-130-010, Cedar County, Iowa</i>
33, 5	Ramirez, Eloise R.	<i>A Phase I Archaeological Survey of Primary Roads Project BRFN-092-9(129)--39-92, a.k.a. PIN 09-92-092-020, Washington County, Iowa</i>
33, 6	Ramirez, Eloise R.	<i>A Phase I Archaeological Survey of Primary Roads Project BRFN-183-2(42)--39-67 a.k.a. PIN 08-67-183-030, Monona County, Iowa</i>
33, 7	Ramirez, Eloise R.	<i>A Phase I Archaeological Survey of Primary Roads Project FSSN-014-7(29)--3T-12, a.k.a. PIN 09-12-014-020, Butler County, Iowa</i>
33, 8	Shields, Wm. Lane	<i>A Phase I Archaeological Survey of Primary Roads Project STPN-065-9(19)--2J-98, Worth County, Iowa</i>
33, 9	Hedden, John G.	<i>A Phase I Archaeological Survey of Primary Roads Project BRF-025-4(38)--39, a.k.a. PIN 09-39-025-010, Guthrie County, Iowa</i>
33, 10	Carlson, Richard J.	<i>A Phase I Historic Architectural Survey of Primary Roads Project STPN-17-1(16)--2J-77, a.k.a. PIN 06-77-017-010, Polk and Boone Counties, Iowa</i>
33, 11	Perry, Michael J.	<i>A Phase I Archaeological Survey of Primary Roads Project BRF-187-1(27)--38-33, a.k.a. PIN 09-33-187-010, Fayette County</i>
33, 17	Hawkins, Alan J.	<i>A Phase I Archaeological Survey of Primary Roads Project HSIPX-150-3(65)--2L-10, a.k.a. PIN 07-10-150-010, Buchanan County, Iowa</i>