



NIH PUBLIC ACCESS

Author Manuscript

Org Biomol Chem. Author manuscript; available in PMC 2010 June 19.

Published in final edited form as:

Org Biomol Chem. 2010 May 7; 8(9): 2198–2203. doi:10.1039/b927161a.

Reagent based DOS: A “Click, Click, Cyclize” strategy to probe chemical space†

Alan Rolfe^{a,b}, Gerald. H. Lushington^{b,c}, and Paul. R. Hanson^{a,b}^aDepartment of Chemistry, University of Kansas, 1251 Wescoe Hall Drive, Lawrence, KS 66045-7582. phanson@ku.edu; Fax: +1 785-864-3094; Tel: +1 785-864-5396^bThe University of Kansas Center for Chemical Methodologies and Library Development, 2121 Simons Drive, Structural Biology Center, West Campus, Lawrence, KS, 66047; Fax: +1 785-864-8179; Tel: +1 785-864-6115^cMolecular Graphics & Modeling Laboratory, University of Kansas, 1251 Wescoe Hall Dr, Lawrence KS 66045; Fax: +1 785-864-5326; Tel: +1 785-864-1166

Abstract

The synthesis of small organic molecules as probes for discovering new therapeutic agents has been an important aspect of chemical-biology. Herein we report a reagent-based, diversity-oriented synthetic (DOS) strategy to probe chemical and biological space *via* a “Click, Click, Cyclize” protocol. In this DOS approach, three sulfonamide linchpins underwent cyclization protocols with a variety of reagents to yield a collection of structurally diverse *S*-heterocycles. *In silico* analysis is utilized to evaluate the diversity of the compound collection against chemical space (PC analysis), shape space (PMI) and polar surface area (PSA) calculations.

Introduction

The synthesis of small organic molecules as probes for discovering new therapeutic agents has been an important aspect of chemical-biology.¹ Essential to this goal are two fundamental features i) the production and access to libraries of skeletally diverse small molecules and ii) biological evaluation and identification of new probes.² Such small molecules have had a dramatic effect in recent years providing invaluable insight into biological targets and the development of therapeutic agents for curing disease.³ The generation of an open-data, high-throughput screening environment of diverse small-molecule libraries has provided both a number of new molecular probes as well as a novel insight into unmined chemical space.² In contrast to natural product-based targeted libraries premised on improving the biological activity of the corresponding natural product, diversity-oriented-synthesis (DOS) derived libraries aim to discover new molecules that exhibit biological effects beyond those associated with the natural product. In this regard, DOS has emerged as a powerful strategy in the generation of structurally complex and skeletally diverse small molecules.⁴

Synthetic protocols combined with rational design of small molecules based on structural diversity, complexity and inherent physiochemical properties, has emerged as a rich area in chemical biology.⁵ The ability to generate a collection of small molecules that combine not only skeletal and peripheral complexity from a central building block, while remaining diverse

†Electronic supplementary information (ESI) available: General experimental details, experimental data for compounds 2–17 and 19 and ¹H and ¹³C NMR spectra of compounds. See DOI: 10.1039/b927161a

Correspondence to: Paul. R. Hanson.

in comparison to each other has been a challenging goal. Libraries synthesized utilizing a DOS approach have been generated through a number of approaches. Seminal papers by Evans in 1988 and Schreiber 2000 reported the generation of substructural motifs as ligands for diverse receptors.⁶ Recently, notable examples of DOS strategies have been reported by Spring, Park and Shair.^{3,4} One of the more notable strategies employing both reagent-based⁷ and functional group pairing attributes is the build/couple/pair (B/C/P) paradigm pioneered by Schreiber and coworkers.⁸

Recently, a number of reports of sultams, the cyclic analogs of sulfonamides, have emerged demonstrating a broad-spectrum bioactivity (Fig. 1), yet not “preordained bioactivity” as is the case with targeted, medicinally active natural products. In particular, reports include anti-HIV activity,⁹ antidepressant activity,¹⁰ inhibitors of RSV,¹¹ selective tumour necrosis factor,¹² and metalloproteinase.¹³ In addition to this potent biological profile, sultams and their sulfonamide precursors possess a number of advantageous chemical properties. This potency, when coupled with their unique chemical properties, elevates sultams as promising candidates for drug discovery.

Despite these attributes, general strategies towards the synthesis of sultam libraries are lacking in the literature.¹⁴ To address this challenge, we report a reagent-based DOS strategy termed “Click, Click, Cyclize” en route to structurally diverse sultams from common sulfonamide linchpins.^{15,16} In this strategy, skeletal diversity is incorporated into each small molecule *via* a chosen orthogonal reagent used to cyclize each linchpin. As in functional-group pairing approaches, this DOS strategy provides a pathway to a collection of diverse sultams.

Results and discussion

Linchpin synthesis *via* “Click, Click, Cyclize” protocol

Taking the aforementioned approach into hand, three unique sulfonamide linchpins **2**, **9** and **15** were designed to yield a collection of sultams utilizing the aforementioned “Click, Click, Cyclize” protocol.¹⁵ In this regard, linchpin **2** was synthesized *via* a “Click” mono-sulfonylation of ethylenediamine with 2-bromobenzene sulfonamide **1**, followed by a second “Click” sulfonylation with tosylchloride (TsCl) to generate the desired linchpin **2** in high yield (Scheme 1).¹⁷ Utilizing a variety of reagents, five sultams and bis-sulfonamides (**3–7**) were readily synthesised. Initial cyclization of linchpin **2** was achieved *via* a microwave-assisted, Cu-catalyzed, intramolecular *N*-arylation yielding the corresponding sultam **3** in 70%.¹⁸ Alternatively, cyclization of linchpin **2** with either 1,2-dibromoethane or 1,3-dibromopropane provided the desired piperazine **4** and diazepine **6** in good yield. In contrast, cyclization of linchpin **2** with carbonyl diimidazole gave the corresponding imidazolidin-2-one **5** in 92% yield. Finally, allylation followed by RCM yielded **7** in 88% yield, *via* a “click-cyclize” 2-step protocol.

Building on these results, sulfonamide linchpin **9** was synthesized *via* sulfonylation of 2-bromobenzylamine **8** with 2-chloroethanesulfonyl chloride followed by an aza-Michael reaction with *n*-butylamine (Scheme 2).¹⁹ It was envisioned that cyclization with four commercially available reagents would yield four skeletally diverse sultams (**10–13**).

Sultam **10** was synthesised *via* cyclization of linchpin **9** utilizing methyl 3-bromo-2-(bromomethyl)propionate. Utilizing the same cyclization protocol as for the synthesis of **4** and **5**, sultams **11** and **12** were synthesized *via* cyclization of linchpin **9** with 1,2-dibromoethane or 1,3-dibromopropane, respectfully. Finally, sultam **13** was synthesized utilizing a microwave-assisted, copper-catalyzed *N*-arylation protocol.

Utilizing a previously developed Cu-catalyzed, *N*-arylation protocol, sulfonamide linchpin **15** was readily synthesized on scale from sulfonylchloride **14** (Scheme 3).¹⁸ The first cyclization route, utilized a CDI cyclization protocol yielding sultam **16** in good yield. In an attempt to synthesize sultam **18**, linchpin **15** was treated with 3-bromo-2-(bromomethyl) propionate in DMF at 60 °C. However, the desired product **18** was not isolated and instead sulfonamide **17** was isolated in 78% yield. Finally, linchpin **15** readily underwent cyclization with 1,2-dibromoethane to yield bicyclic sultam **19** in good yield.

To evaluate the diversity that is contributed by this collection of molecules and hence their associated chemical descriptors, *in silico* algorithms were utilized to evaluate the *S*-heterocycles reported. With each molecule possessing its own set of unique descriptors, every small molecule has a discrete point in chemical space. Therefore, the more chemical space probed by a collection of molecules, the greater the associated diversity. This metric of diversity in chemical space can be represented by a principle component (PC) analysis (Fig. 2). In order to gauge the chemical diversity of the sultams and sulfonamides (**3–7**, **10–13** and **16–19**) reported herein, we plotted them in a chemical space plot corresponding to a set of five BCUT descriptors relative to 3770 FDA approved compounds as reported in ZINC database (Fig. 2).²⁰ This plot demonstrated that this collection of molecules both covered a significant area of chemical space but also the compounds did not cluster together according to the corresponding linchpin they were derived from.

Building on this analysis, sultams and sulfonamides (**3–7**, **10–13** and **16–19**), were plotted according to the normalized principal moment of inertia (PMI) formalism of Sauer and Schwartz, in order to gauge the shape-based distribution (Fig. 3).²¹ The PMI plot is a rapid and visual way to demonstrate diversity corresponding to the area of shape space covered by a collection of molecules. This is a significant property for a collection of molecules to possess, as broad biological activity has been correlated to shape space.²¹ Hence, screening collections possessing a high degree of molecular shape diversity increases the chances of a broad range of biological activity. Each molecule was aligned to principal inertial moment axes in SYBYL,²² and the normalized PMI values were computed *via* a program developed in-house (available upon request to the authors). With this plot in hand, Fig. 3 demonstrates a large coverage of shape space for sultams and sulfonamides (**3–7**, **10–13** and **16–19**). Of note is the coverage by compounds **10–13** (red data points) derived from linchpin **8** further demonstrating the diversity achieved utilizing a “Click, Click, Cyclize” approach.

In addition to diversity in both chemical and shape space, polar surface area of a small molecule is a key feature in terms of diverse bioactive molecules involved in ligand-receptor binding. Rigid scaffolds bearing diverse polar surface areas interact differently with various key interactions such as hydrogen bonding, electrostatic and other non-covalent interactions. This is further exemplified by reports that demonstrate the diverse biological activity associated with small molecules with diverse polar surface areas resulting from different orientations of heteroatoms.^{4a} In this regard, polar surface area distribution of sultams **3**, **4**, **5** and **7** were plotted (Fig. 4). Comparison among the four further demonstrates the degree of diversity achieved from linchpin **2** utilizing a “Click, Click, Cyclize” protocol. Surface electrostatic profiles were calculated by projecting the Gasteiger-Marsili charge distribution onto a Connolly surface generated *via* the MOLCAD tool in SYBYL.²²

Conclusions

In summary, we have utilized a “Click, Click, Cyclize” strategy to synthesize a collection of skeletally diverse heterocycles in a DOS approach. Three distinct sub-sets of molecules were prepared *via* the cyclization of sulfonamide linchpins with a variety of reagents. *In silico*

analysis using a variety of metrics demonstrates the degree of diversity from this collection in regards of chemical space, shape space and polar surface area.

Supplementary Material

Refer to Web version on PubMed Central for supplementary material.

Acknowledgments

This publication was made possible by the Pilot-Scale Libraries Program (P41 GM076302), the National Institutes of General Medical Sciences (KU Chemical Methodologies and Library Development Center of Excellence, P50 GM069663) and by Grant Number P20 RR015563 from the National Center for Research Resources, a component of the National Institutes of Health, and the State of Kansas. Its contents are solely the responsibility of the authors and do not necessarily represent the official view of the NCRR or NIH.

References

1. (a) Austin CP. *Curr Opin Chem Biol* 2003;7:511–515. [PubMed: 12941427] (b) Hopkins AL, Groom CR. *Nat Rev Drug Discovery* 2002;1:727–730. (c) Drews J, Ryser S. *Nat Biotechnol* 1996;14:1516–1518. [PubMed: 9634812]
2. (a) Dolle RE, Bourdonnec BL, Goodman AJ, Morales GA, Thomas CJ, Zhang W. *J Comb Chem* 2008;10:753–802. [PubMed: 18991466] (b) Dolle RE, Bourdonnec BL, Goodman AJ, Morales GA, Salvino JM, Zhang W. *J Comb Chem* 2007;9:855–902. [PubMed: 17877417]
3. Thomas GL, Spandl RJ, Glansdrop FG, Welch M, Bender A, Cockfield J, Lindsay JA, Bryant C, Brown DF, Loiseleur O, Rudyk H, Ladlow M, Spring DR. *Angew Chem, Int Ed* 2008;47:2804–2087.
4. (a) An H, Eum SJ, Koh M, Lee SK, Park SB. *J Org Chem* 2008;73:1752–1761. [PubMed: 18266382] (b) Pelish HE, Westwood NJ, Feng Y, Kirchhausen T, Shair M. *J Am Chem Soc* 2001;123:6740–6741. [PubMed: 11439080] (c) Ramachary DB, Venkaiah C, Reddy YV, Kishor M. *Org Biomol Chem* 2009;7:2053–2062. [PubMed: 19421442] (d) Galloway WRJD, Diaz-Gavilan M, Isidro-Llobet A, Spring DR. *Angew Chem, Int Ed* 2009;48:1194–5.
5. Lipinski C, Lombardo D, Dominy B, Feeney P. *Adv Drug Delivery Rev* 1997;23:3–25.
6. (a) Evans BE, Rittle KE, Bock MG, DiPardo RM, Freidinger RM, Whitter WL, Lundell GF, Veber DF, Anderson PS, Chang RSL, Lotti VJ, Cerino DJ, Chen TB, Kling PJ, Kunkel KA, Springer JP, Hirshfield J. *J Med Chem* 1988;31:2235–2246. [PubMed: 2848124] (b) Schreiber SL. *Science* 2000;287:1964–1969. [PubMed: 10720315]
7. Wyatt EE, Fergus S, Galloway WRJD, Bender A, Fox DJ, Plowright AT, Jessiman AS, Welch M, Spring DR. *Chem Commun* 2006:3296–3298.
8. Nielsen TE, Schreiber SL. *Angew Chem* 2008;120:52–61.
9. Arranz ME, Diaz JA, Ingate ST, Witvrouw M, Pannecouque C, Balzarini J, Clercq ED, Vega S. *Bioorg Med Chem* 1999;7:2811–2822. [PubMed: 10658585]
10. Giannotti D, Viti G, Sbraci P, Pestellini V, Volterra G, Borsini F, Lecci A, Meli A, Dapporto P, Paoli P. *J Med Chem* 1991;34:1356–1362. [PubMed: 2016710]
11. Combrink KD, Gulgeze HB, Thuring JW, Yu KL, Civiello RL, Zhang Y, Pearce BC, Yin Z, Langley DR, Kadow KF, Cianci CW, Li Z, Clarke J, Genovesi EV, Medina I, Lamb L, Yang Z, Zadjura L, Krystal M, Meanwell NA. *Bioorg Med Chem Lett* 2007;17:4784–4790. [PubMed: 17616396]
12. Cherney RJ, Duan JJW, Voss ME, Chen L, Wang L, Meyer DT, Wasserman ZR, Hardman KD, Li RQ, Covington MB, Qian M, Mandlekar S, Christ DD, Trzaskos JM, Newton RC, Magnolda RL, Wexler RR, Decicco CP. *J Med Chem* 2003;46:1811–1823. [PubMed: 12723945]
13. Cheng M, De B, Pikul S, Almstead NG, Natchus MG, Anastasio MV, McPhail SJ, Snider CE, Taiwo YO, Chen L, Dunaway CM, Gu F, Dowty ME, Mieling GE, Janusz MJ, Wang-Weigand S. *J Med Chem* 2000;43:369–380. [PubMed: 10669564]
14. (a) Rolfé A, Young K, Volp KA, Schoenen F, Neuenswander B, Lushington GH, Hanson PR. *J Comb Chem* 2009;11:732–738. (b) Rayabarapu DK, Zhou A, Jeon KO, Samarakoon T, Rolfé A, Siddiqui H, Hanson PR. *Tetrahedron* 2009;65:3180–3188. [PubMed: 20161276] (c) Jeon KO, Rayabarapu DK, Rolfé A, Volp KA, Omar I, Hanson PR. *Tetrahedron* 2009;65:4992–5000. [PubMed: 20161277]

- (d) Rolfe A, Young K, Hanson PR. *Eur J Org Chem* 2008;5254–5262. (e) Jiménez-Hopkins M, Hanson PR. *Org Lett* 2008;10:2223–2954. [PubMed: 18447383]
15. Zhou A, Rayabarapu D, Hanson PR. *Org Lett* 2009;11:531–534. [PubMed: 19115841]
16. “Click” chemistry is a chemical philosophy introduced by K. Barry, Sharpless in 2001 that describes chemistry tailored to generate substances quickly and reliably by joining small units together; see: Kolb H, Finn MG, Sharpless KB. *Angew Chem, Int Ed* 2001;40:2004–2021.
17. Dijkman A, Elzinga JM, Li YX, Arends IWCE, Sheldon RA. *Tetrahedron: Asymmetry* 2002;13:879–84.
18. Rolfe A, Hanson PR. *Tetrahedron Lett* 2009;50:6935–6937.
19. Zhou A, Hanson PR. *Org Lett* 2008;10:2951–2954. [PubMed: 18553974]
20. (a) ZINC Version 9: A free database for virtual screening. University of California; San Francisco, CA: 2009. <http://zinc.docking.org/> (b) Pearlman RS, Smith KM. *J Chem Inf Comput Sci* 1999;39:28–35. (c) DiverseSolutions. The Tripos Associates; St. Louis Mo: 2008. (d) BCUT indicators utilized are as follows: bcut_gastchrg_S_invdist2_000.550_K_L bcut_gastchrg_S_invdist6_000.250_K_H bcut_haccept_S_invdist_000.500_K_H bcut_tabpolar_S_invdist_000.250_K_H bcut_tabpolar_S_invdist_000.500_K_L.
21. Sauer WHB, Schwartz MK. *J Chem Inf Comput Sci* 2003;43:987–1003. [PubMed: 12767158]
22. SYBYL 8.0. The Tripos Associates; St. Louis MO: 2008.

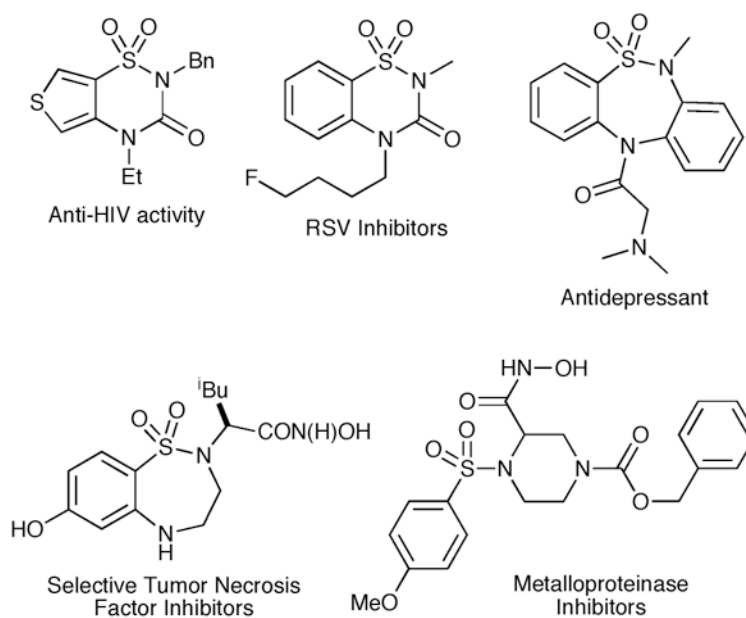


Fig. 1. Biologically active sultams and sulfonamides.

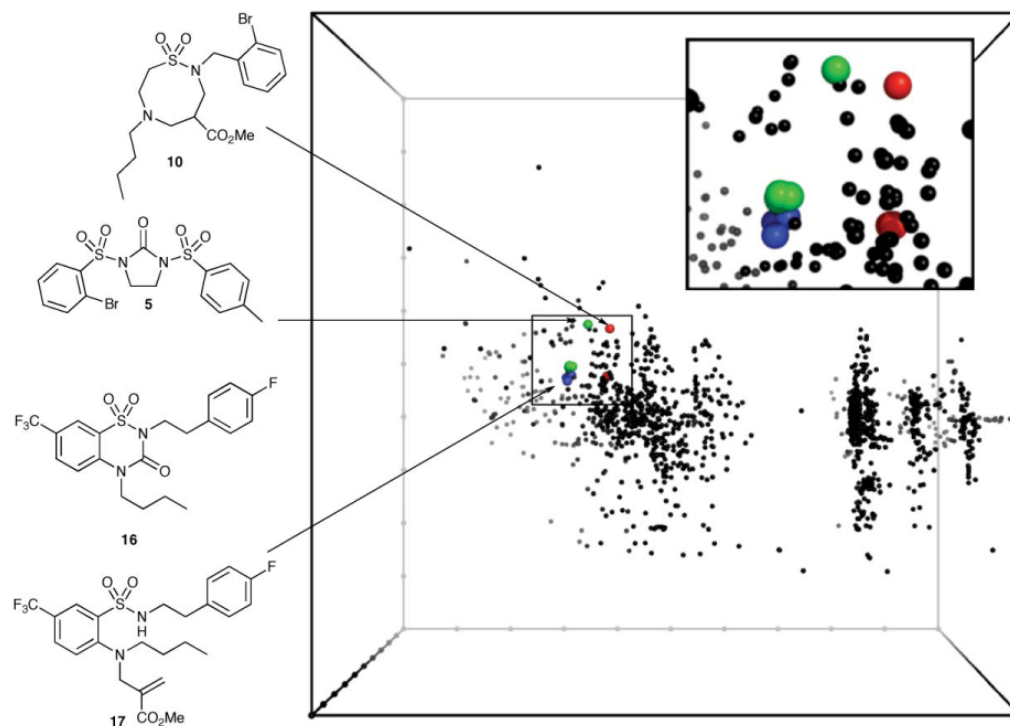


Fig. 2. Three-dimensional chemical diversity plot of compounds 2–7 (green), 9–13 (red) and 14–19 (blue) relative to 3770 FDA approved compounds as reported in the ZINC database. The axes reflect normalized projections of three H-sensitive three-dimensional BCUT metrics chosen as having optimal variance levels within the MLSMR screening set, including the 600 projection of the Burden H-donor (horizontal axis), and the 500 (vertical axis) and 600 (out-of-plane axis) projections of the Burden tab-polar projections, as computed *via* DiverseSolutions.²⁰

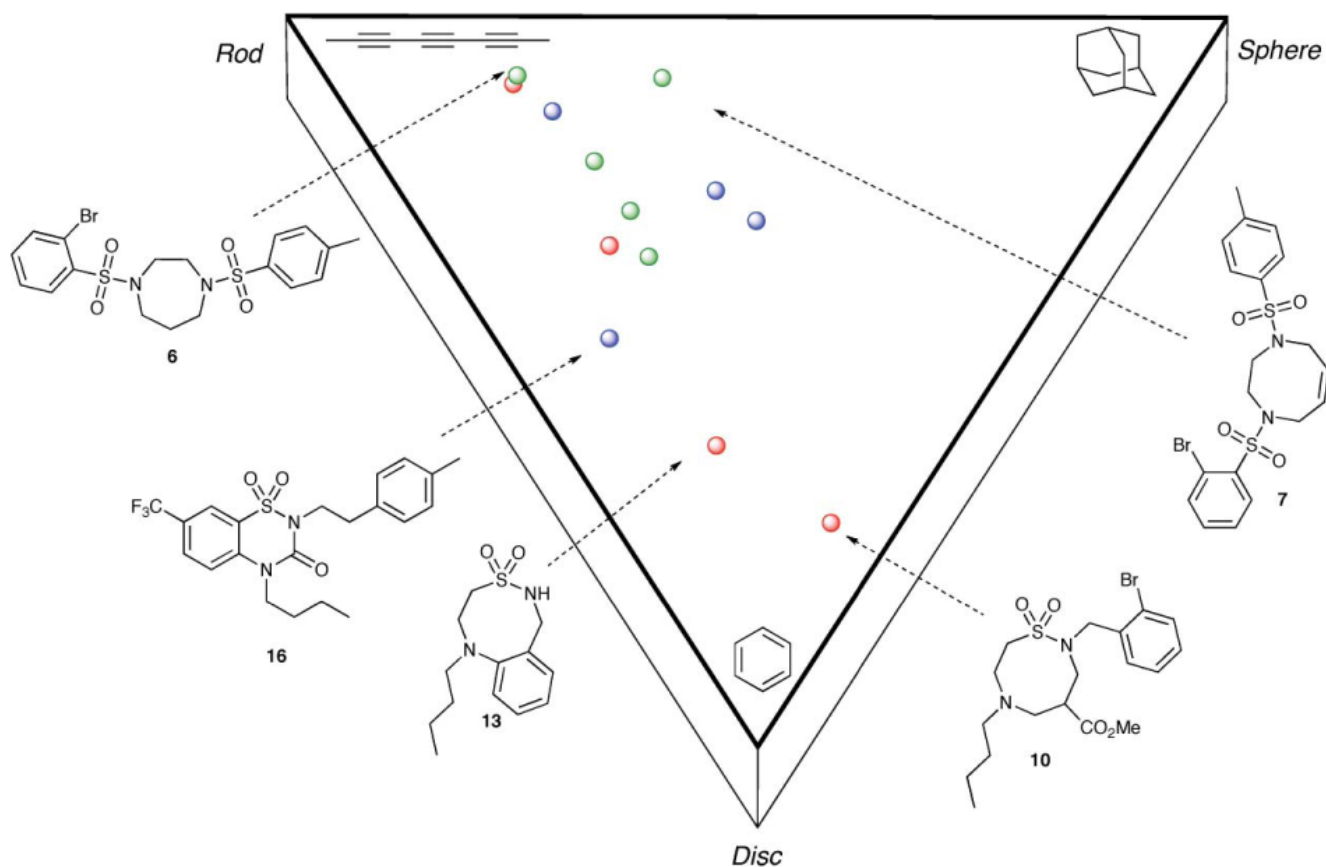


Fig. 3. Principal moment of inertia (PMI) plot of compounds **3–7** (green), **10–13** (red) and **16–19** (blue) as computed for energetically minimized conformers of the compounds using Gasteiger-Marsili electrostatics.

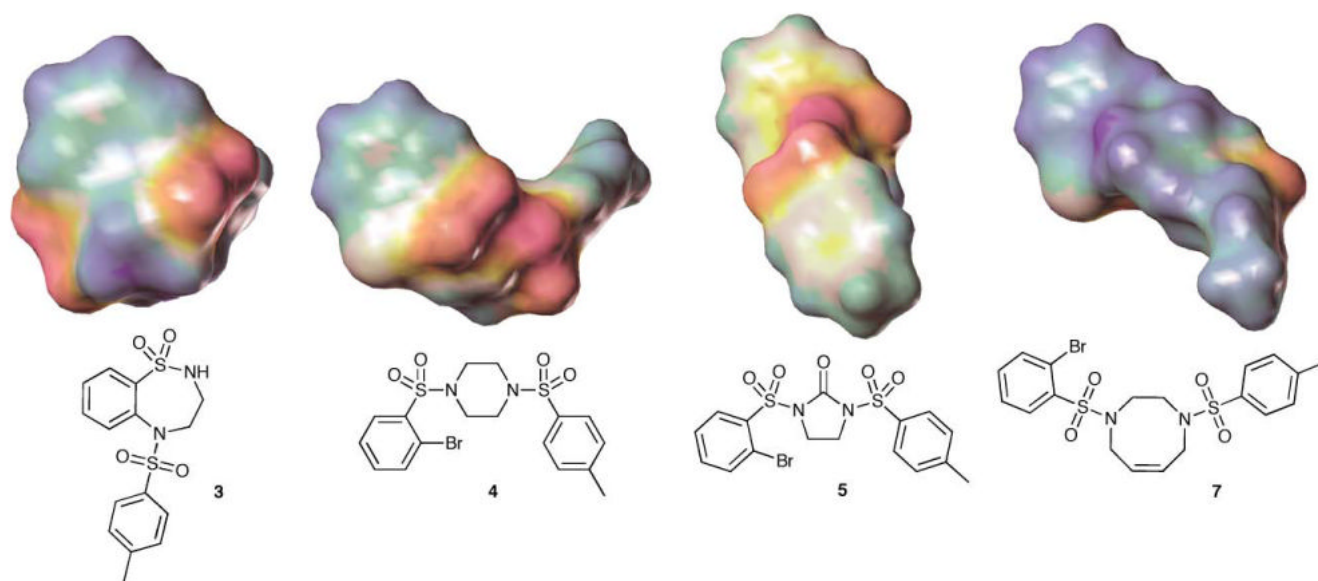
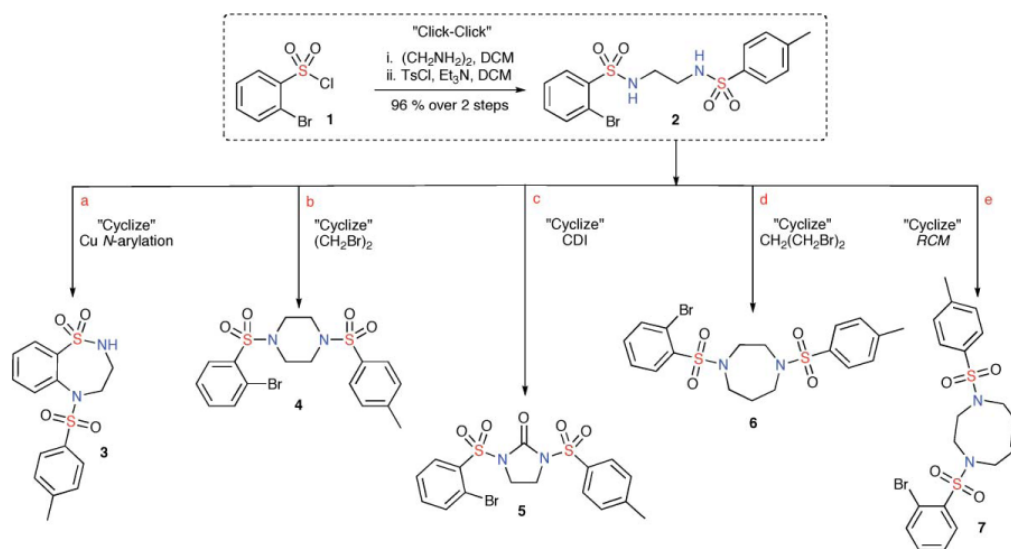
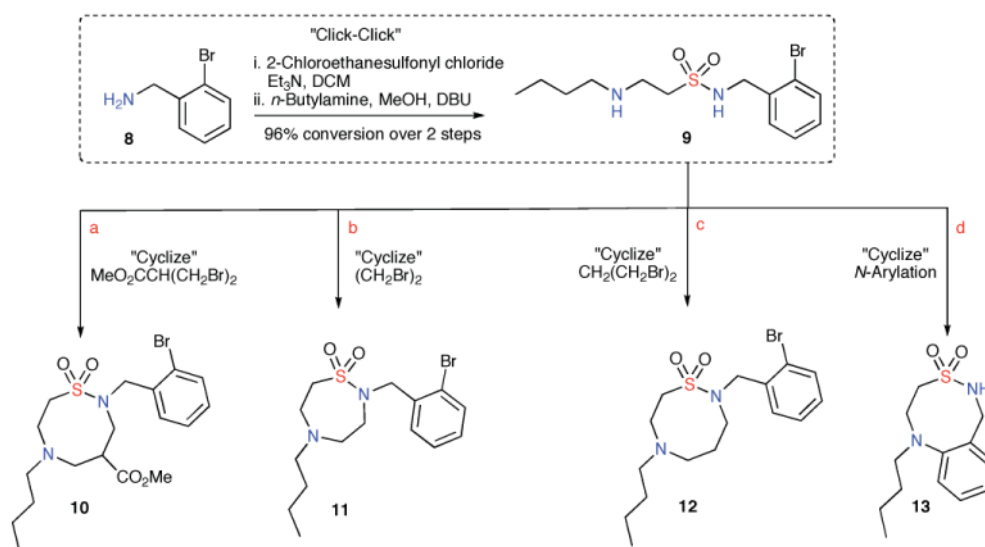


Fig. 4. Surface electrostatic profiles of sultams and sulfonamides **3** (78.33), **4** (100.61), **5** (125.49) and **7** (92.95). The compounds have been mutually aligned so that the conserved phenylsulfonyl moiety is located in the upper left corner for each molecule. The surface corresponds to the H₂O-accessible Connolly surface, and the colouring reflects the Gasteiger-Marsili charge distribution, such that electronegative areas are colored red, electro positive areas are blue.



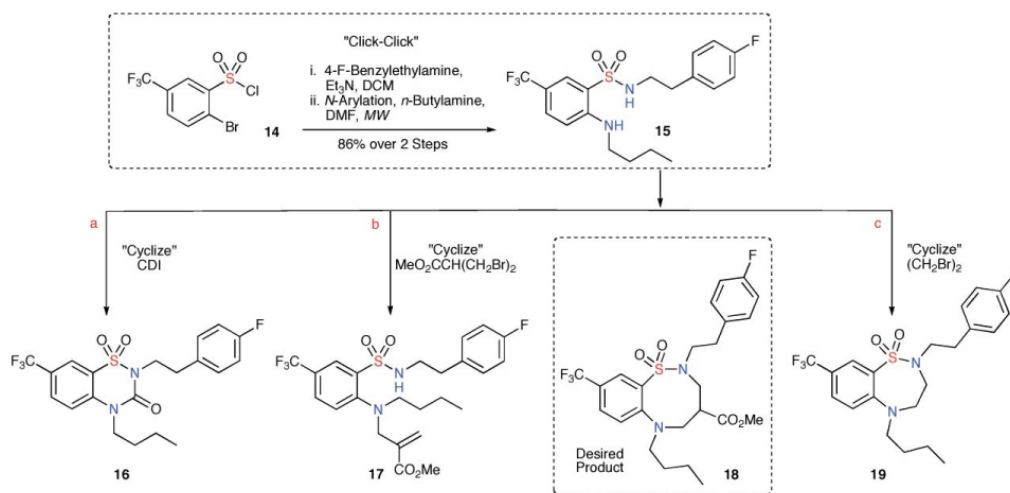
Scheme 1.

a) CuI, 1,10-phenanthroline, Cs₂CO₃, DMF, MW, 70%. b) (CH₂Br)₂, Cs₂CO₃, DMF, 60 °C, 90%. c) CDI, Et₃N, DMF, 60 °C, 92%. d) CH₂(CH₂Br)₂, Cs₂CO₃, DMF, 60 °C, 85%. e) i. Allyl bromide, NaH, THF, RT, ii. Grubbs 2nd Generation, DCM, reflux, 88% (over steps).



Scheme 2.

a) Cs₂CO₃, MeO₂CCH(CH₂Br)₂, DMF, 64%. b) (CH₂Br)₂, Cs₂CO₃, DMF, 60 °C, 84%. c) CH₂(CH₂Br)₂, Cs₂CO₃, DMF, 60 °C, 76%. d) CuI, 1,10-Phenanthroline, K₂CO₃, DMF, MW, 56%.



Scheme 3.

a) CDI, Et_3N , DMF, 60 °C, 96%. b) Cs_2CO_3 , $\text{MeO}_2\text{CCH}(\text{CH}_2\text{Br})_2$, DMF, 78%. c) $(\text{CH}_2\text{Br})_2$, Cs_2CO_3 , DMF, 60 °C, 87%.