

Three new cryptic species of *Euglossa* from Brazil (Hymenoptera, Apidae)

André Nemésio^{1,†}, Michael S. Engel^{2,‡}

1 Instituto de Biologia, Universidade Federal de Uberlândia. Rua Ceará, s/n, Campus Umuarama, Uberlândia, MG, 38.400-902, Brazil **2** Division of Entomology, Natural History Museum, and Department of Ecology & Evolutionary Biology, 1501 Crestline Drive – Suite 140, University of Kansas, Lawrence, Kansas 66045, USA

† [urn:lsid:zoobank.org:author:D93E9C9F-D2B6-4944-843B-84BA8BAED820](https://doi.org/urn:lsid:zoobank.org:author:D93E9C9F-D2B6-4944-843B-84BA8BAED820)

‡ [urn:lsid:zoobank.org:author:3714A7FF-E19E-495A-AAF9-98D2F597B757](https://doi.org/urn:lsid:zoobank.org:author:3714A7FF-E19E-495A-AAF9-98D2F597B757)

Corresponding author: André Nemésio (andre.nemesio@gmail.com)

Academic editor: Michael Obl | Received 14 May 2012 | Accepted 13 September 2012 | Published 21 September 2012

[urn:lsid:zoobank.org:pub:84997E35-DA8A-466A-B071-662820CFC97D](https://doi.org/urn:lsid:zoobank.org:pub:84997E35-DA8A-466A-B071-662820CFC97D)

Citation: Nemésio A, Engel MS (2012) Three new cryptic species of *Euglossa* from Brazil (Hymenoptera, Apidae). ZooKeys 222: 47–68. doi: 10.3897/zookeys.222.3382

Abstract

Three new species of orchid bees are described and figured from the Amazon and Atlantic forests of Brazil. *Euglossa clausi* **sp. n.**, *E. moratoi* **sp. n.**, and *E. pepeii* **sp. n.** are distinguished from their close congeners *E. crassipunctata* Moure, *E. parvula* Dressler, and *E. sapphirina* Moure, previously placed in the subgenus *Euglossa* (*Glossurella*) Dressler, 1982, a demonstrably paraphyletic assemblage requiring serious reconsideration. Their affinities with related species are discussed and pertinent characters are figured.

Keywords

Amazon Basin, Atlantic Forest, Apoidea, Anthophila, Euglossini, orchid bees, new species, taxonomy

Introduction

The taxonomy of the Neotropical orchid bees (Apinae: Euglossini *sensu* Michener (1944, 2007) [it should be noted that the Brazilian melittological community considers this a subtribe of Apini in a less hierarchical classification of Apoidea whereby bees are relegated to a single family; the differences, however, are semantic and the concepts

of included taxa are equivalent]) received a tremendous boost after the 1960s, when it was realized that males could be attracted easily to synthetic fragrances that mimic the odor of some flowers, especially orchids (Vogel 1966; Dodson et al. 1969). Many unknown species were thus captured, recognized, and subsequently described (e.g., Moure 1968, 1969, 1970; Dressler 1978, 1982a, 1982b, 1982c). Although some orchid bee species continued to be described after this flurry of activity, a period of relative taxonomic stasis developed during late 1980s and through the 1990s, until the end of the 90s when new species again began to be described (e.g., Engel 1999). In addition to a critical reappraisal of historical type material, otherwise ‘hidden’ sibling and cryptic species were recognized and this led to a new wave of descriptive work over the last decade (e.g., Oliveira and Nemésio 2003; Roubik 2004; Ramírez 2005, 2006; Parra et al. 2006; Rasmussen and Skov 2006; Nemésio 2006, 2007a, 2007b, 2008, 2009, 2010a, 2011b, 2011c, 2011d, 2012; Oliveira 2006, 2011; Bembé 2007, 2008; Hinojosa-Díaz and Engel 2007, 2011a, 2011b; Nemésio and Bembé 2008; Hinojosa-Díaz et al. 2011, 2012; Eltz et al. 2011; Faria and Melo 2011, 2012; Nemésio and Ferrari 2012).

Herein we continue this tradition with the recognition and description of three new species of *Euglossa* Latreille. All three species are closely related to species until recently placed in the paraphyletic subgenus *Glossurella* Dressler (Ramírez et al. 2010; Hinojosa-Díaz 2010, in prep.) and here left as *incertae sedis* (as suggested by Hinojosa-Díaz and Engel 2011b; Hinojosa-Díaz et al. 2012). Two of the new species, *Euglossa clausi* sp. n. and *E. moratoi* sp. n., are closely related to the Central American *E. crassipunctata* Moure and *E. sapphirina* Moure and have been identified as *E. crassipunctata* both in the Amazon and Atlantic forests. However, the species can be differentiated not only on the basis of coloration and size, but also in the male terminalia. The third species, *E. pepei* sp. n., is described from the Atlantic forest of southern Bahia, and is one of the most distinctive, apparently sharing some characters with the Amazonian *E. parvula* Dressler, but differing in terms of its genitalia.

Material and methods

Material considered herein is deposited in the collections of the Universidade Federal de Minas Gerais, Belo Horizonte, Brazil (**UFMG**); Florida Museum of Natural History, Gainesville, Florida, USA (**FMNH**); and the Division of Entomology, University of Kansas Natural History Museum, Lawrence, Kansas, USA (**SEMC**). General morphological terminology for bees follows Engel (2001) and Michener (2007), while specific terms for orchid bees follows Engel (1999), Nemésio (2009: 10, 12), and Hinojosa-Díaz (2008). Metasomal terga and sterna are referred to as T1, T2, ... T n , and S1, S2, ... S n , respectively. Integumental and setal coloration are those observed by eye under a Leica MZ12 or Olympus SZX-12 stereomicroscope with reflected fiber optic illumination. Measurements provided are those of the name-bearing holotypes. The taxonomic arrangement of genera, subgenera, and species adopted herein follows that of Nemésio and Rasmussen (2011). Material of representative other euglossine species

was examined from UFMG, SEMC, and FMNH. Label data are given with each label separated by “”. When data of a label of the subsequent specimen are identical to those of the previously cited specimen, only “idem” is provided. We have provided genitalic characters to distinguish the species. There is variation in the genitalia, particularly in the form of the gonostylus, within some species of *Euglossa* but the presence of such variation within an individual species is not consistent throughout the genus (e.g., Hinojosa-Díaz and Engel 2011a). For the moment there does not appear to be significant genitalic variation within the species considered herein but this should be clarified should the new species herein be discovered at more distant geographic locales. Regardless of this variation, important characters for the recognition of species, species groups, and even larger clades are present within Euglossini (Hinojosa-Díaz 2008).

Systematics

Genus *Euglossa* Latreille

All three species described herein are left as *incertae sedis* in regard to subgenus (following the suggestion of Hinojosa-Díaz and Engel 2011b; Hinojosa-Díaz et al. 2012), but they share a number of characters which suggest they are closely related such as: small bees with dark blue clypeus, very coarsely punctate mesepisternum and coarsely punctate mesoscutum, anterior mesotibial tuft entire, sternal tufts in semi-circular depressions. Specific characters of each species are given below, as well as between the new species and *E. crassipunctata* and *E. sapphirina* in the diagnoses and discussion (*vide infra*).

Euglossa clausi sp. n.

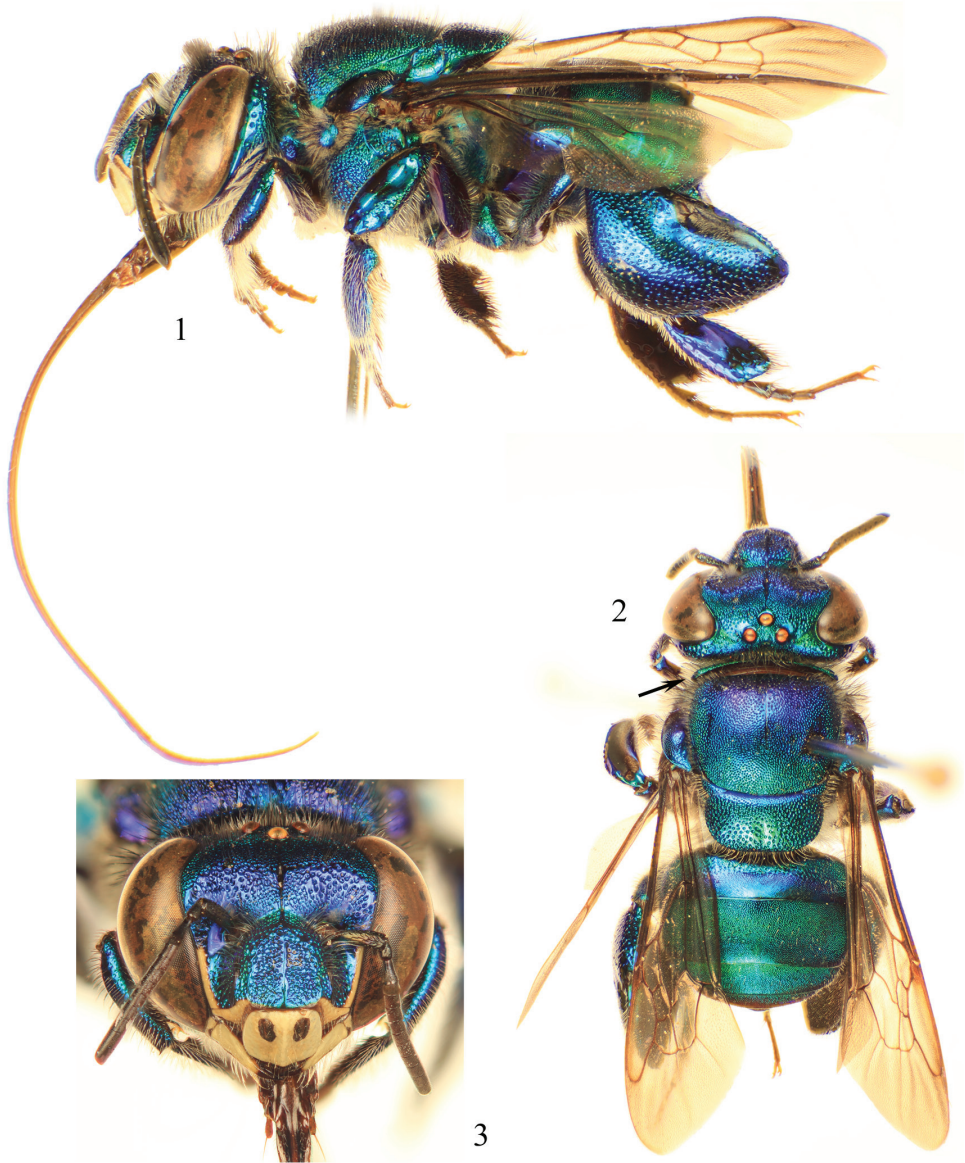
urn:lsid:zoobank.org:act:D52A8C97-75AD-4F25-8450-B0CC4DA5D103

http://species-id.net/wiki/Euglossa_clausi

Figures 1–11

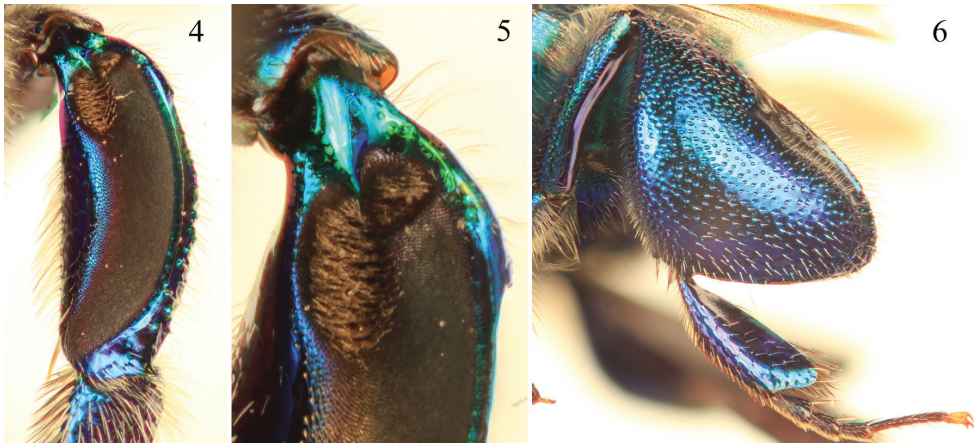
Holotype. ♂, with the following data: “Euglossini do PERD, Pq. E. Rio Doce, 3859-11105” and “Marliéria, MG, Brasil, 04/07/1999, A. Nemésio” (UFMG). Details of the type locality are: Parque Estadual do Rio Doce (19°43'S, 42°34'W; 200 m a.s.l.), in the municipality of Marliéria, state of Minas Gerais, southeastern Brazil.

Paratypes. 3♂♂, with the following label data: “Euglossini do PERD, Pq. E. Rio Doce, 3859-11106” and “Marliéria, MG, Brasil, 04/07/1999, A. Nemésio”; “idem, 3872-11131” and “idem” (UFMG); “idem, 3876-11137” and “idem” (UFMG). 1♂, “Brazil, E. Santo, No. Linhares, 12.xi.1968, R.L. Dressler” (FMNH). 1♂, “Brazil, Bahia, Res. Mte. Pascoal, 8.xi.1968, R.L. Dressler” (FMNH). 1♂, “Brazil, E. Santo, Conceicao da Barra, 10.xi.1968, R.L. Dressler” (FMNH). 1♂, “Brazil, Bahia, Itabuna, 19.vi.1971, H. Kennedy, cineole” (SEMC). 1♂, “Brazil, Bahia, Itabuna, 6.xi.1968, R.L. Dressler” (SEMC).



Figures 1–3. Photomicrographs of paratype male of *Euglossa clausi* Nemésio and Engel, sp. n. **1** Lateral habitus **2** Dorsal habitus (arrow points to rounded pronotal angle) **3** Facial aspect.

Diagnosis. *Euglossa clausi* can be distinguished readily from both *E. crassipunctata* and *E. sapphirina* owing to its larger size (ca. 15% larger than both species), and a combination of integumental coloration that exactly matches neither of the aforementioned species (and for this reason has been confused with both: *vide* Nemésio 2009: 85–87). The paraocular ivory markings in *E. clausi* are wider below (Fig. 3) than in both *E. crassipunctata* and *E. sapphirina*. The metatibia and sterna (Figs 1, 6) are blue, contrasting



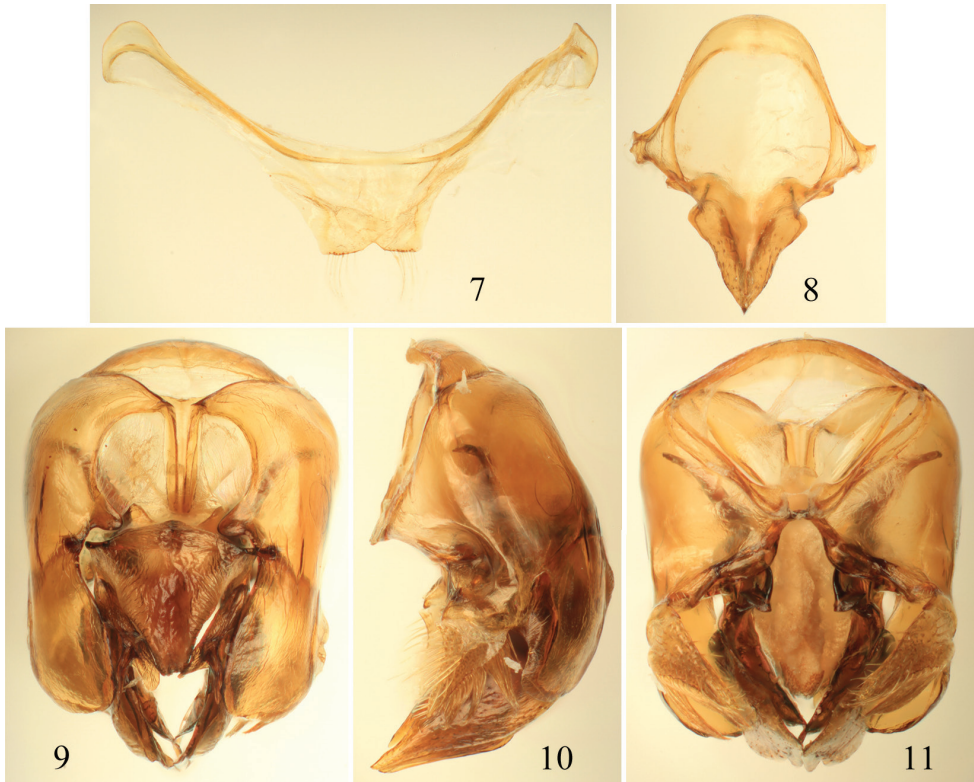
Figures 4–6. Tibial characters of *Euglossa clausi* Nemésio and Engel, sp. n. **4** Outer surface of mesotibia **5** Detail of mesotibial tufts **6** Outer surface of metatibia.

the otherwise green metasoma, a color combination not found in *E. crassipunctata* (green metasoma, including the sterna, and metatibia) and *E. sapphirina* (blue throughout). The apical setae of S7 of *E. clausi* are distributed throughout the invaginated section and the posterolateral projections of the anterior section of S8 angled but not prominent, instead being more strongly developed in *E. moratoi* (Figs 7, 8), as is the development of the basolateral projections of the posterior section. The gonostylus of *E. clausi* is more straight or even slightly downcurved (Figs 9–11), relative to that of *E. moratoi* (Figs 23–25), and both differ from the terminalia of *E. crassipunctata* (Figs 12–15).

Description. ♂: Body length ca. 10.0 mm; forewing length ca. 7.7 mm; head width 4.4 mm; interorbital distance at level of antennal sockets 2.5 mm; maximum interorbital distance 2.7 mm; labiomaxillary complex in repose reaching tip of body; scape length 0.8 mm; compound eye length 2.7 mm; mesoscutellum width 2.5 mm, length 1.2 mm; abdominal width 4.2 mm.

Coloration and vestiture: Clypeus and upper frons dark blue, remainder of head greenish-blue (Fig. 3); ivory paraocular markings well developed, reaching malar area, wider below; anterior surface of antennal scape black with very minute ivory marking in some specimens (including holotype); mesoscutum, mesoscutellum, and metasoma bluish-green (Figs 1, 2). Wing membranes lightly infumate. Pubescence very sparse, predominantly fulvous setae on metasoma and around antennal sockets, black and fulvous setae on mesosoma, black setae especially on mesoscutum (compared to predominantly fulvous setae in *E. moratoi*). Protibia and probasitarsus fringed with dense fulvous setae; velvet area occupying all ventral surface of mesotibia, posterior mesotibial tuft approximately one-third size of anterior tuft, almost an isosceles triangle in shape, merging with anterior tuft; anterior mesotibial tuft oval, about three times larger than posterior tuft (Figs 4, 5); metatibia oblong-rhomboid, inflated (Fig. 6).

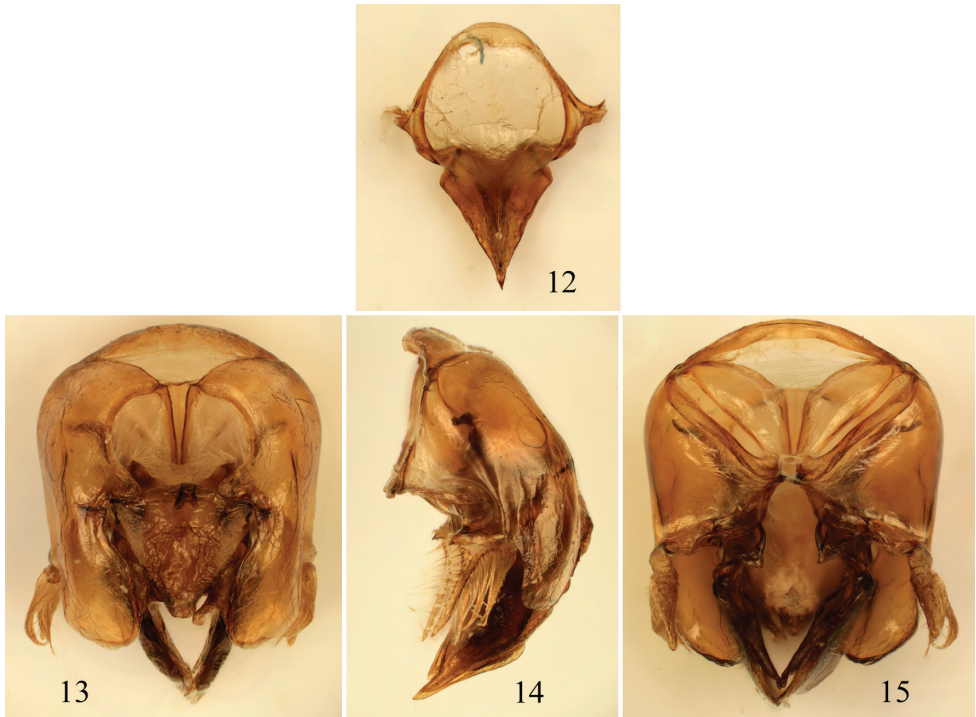
Punctuation: Mesoscutum with punctuation separated by a puncture width or less, with large circular punctures; punctures on mesoscutellum sparser than on mesos-



Figures 7–11. Male terminalia of *Euglossa clausi* Nemésio and Engel, sp. n. **7** Seventh metasomal sternum **8** Eighth sternum (note that relative proportions of the anterior section to the posterior section may be distorted owing to position of sclerite when photographed) **9** Genital capsule, dorsal view **10** Genital capsule, lateral view **11** Genital capsule, ventral view.

cutum medioposteriorly, separated there by a puncture width or greater, with larger circular punctures. Punctuation on discal base of T1 with large circular punctures of roughly same size more clearly defined medially than in other species and separated by less than a puncture width; punctures of T1–T6 dense, comprised of minute circular punctures; punctures on T7 sparser than on preceding terga, with large circular punctures; S2 with small, widely-separated tufts.

Terminalia: Male terminalia as in figures 7–11. S7 slightly invaginated mesally, forming a shallow incision with converging sides forming angle of $\sim 110^\circ$, lateral sections faintly curved; apical setae throughout invaginated section, comprising seven alveoli (with one seta each) on each side; notospiculum weak, slightly divided apically, posterolateral projections of anterior section weak, not prominent; posterior section triangular, sharply pointed, with basolateral points not as sharply developed as in *E. moratoi*, slightly more rounded; anterior-most section of gonobase projected ventrally, forming angle of $\sim 100^\circ$ with remainder of ventral edge; gonostylus simple ('type V' of Ospina-Torres et al. 2006), lateral lobe pointed and slightly curved downwards; gonostylar setae long throughout; dorsal process of gonocoxa well developed, apical process evenly rounded laterally.



Figures 12–15. Male terminalia of *Euglossa crassipunctata* Moure. **12** Eighth metasomal sternum (note that relative proportions of the anterior section to the posterior section may be distorted owing to position of sclerite when photographed) **13** Genital capsule, dorsal view **14** Genital capsule, lateral view **15** Genital capsule, ventral view.

♀: Unknown.

Etymology. The specific epithet is a patronym honoring Dr. Claus Rasmussen, noted corbiculate bee biologist and systematist, in recognition of his years of kind collegiality.

Baits. Specimens of this species have been collected mostly from baits of cineole and vanillin, while a few specimens were collected from skatole.

Geographic distribution. *Euglossa clausi* sp. n. is a widespread bee in the Atlantic forest. Males have been collected from the state of Pernambuco in the north, to the northern portion of the state of São Paulo in the south (*vide* Nemésio 2009: 115 for specific locations where this species has been recorded).

Comments. Specimens of this species had been labeled in collections under the nomen nudum “*cyanifrons*”. It may be that additional material is located in other institutions under this name. In addition, individuals of this species were treated in the literature as *E. sapphirina* (Tonhasca et al. 2002a, 2002b, 2003; Neves and Viana 2003; Nemésio and Silveira 2006, 2007) or *E. crassipunctata* (Milet-Pinheiro and Schindwein 2005; Moura and Schindwein 2009; Nemésio 2009, 2010b, 2011a, 2011b).

***Euglossa moratoi* sp. n.**

urn:lsid:zoobank.org:act:78CE101D-7A27-47AD-8C6D-A980E636A432

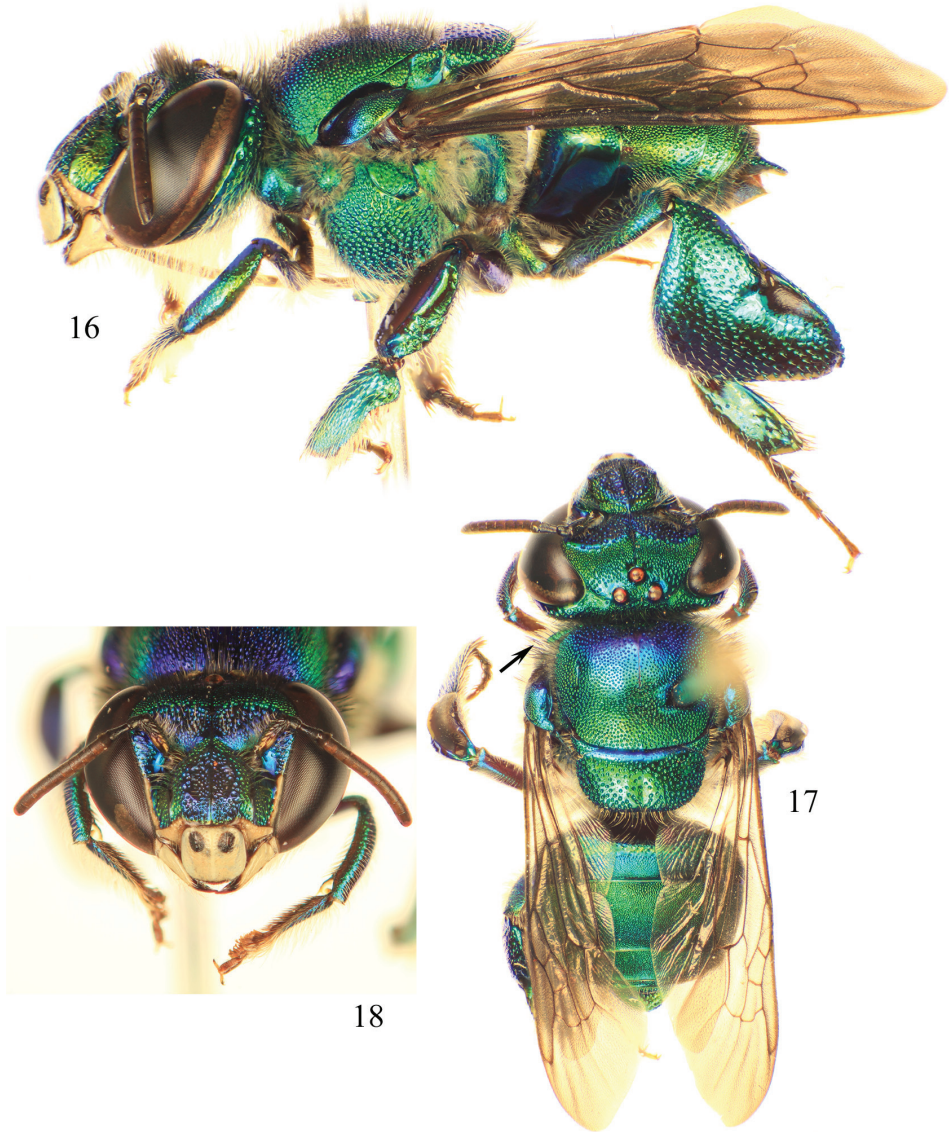
http://species-id.net/wiki/Euglossa_moratoi

Figures 16–25

Holotype. ♂, with the following data: “EIA Porto Trombetas, Cipó I, Zona Leste, 12200-36025” and “Oriximiná, PA, Brasil 25/02/2007, R. B. Martines” (UFMG). The type locality is: Porto Trombetas, in the municipality of Oriximiná, state of Pará, northern Brazil.

Paratypes. 10 ♂♂, with the following label data: “EIA Porto Trombetas, Monte Branco 2, Zona Leste, 11567-34328” and “Oriximiná, PA, Brasil 11/12/2006, R. B. Martines” (UFMG); “idem, 11575-34366” and “idem” (UFMG); “idem, 11578-34374” and “idem” (UFMG); “idem, Cipó 2, Zona Leste, 11634-34512” (SEMC) and “idem, 13/12/2006” and “idem” (UFMG); “idem, Teófilo 2, Zona Leste, 11545-34254” and “idem, 10/12/2006” (UFMG); “ParNa S. do Divisor, 12512-36708” and “Mâncio Lima, AC, Brasil, 21/11/1996, E. F. Morato” (UFMG); “idem, 12541-36759” and “idem” (UFMG); “14507-42692” and “Santarém, PA, Brasil, 11/12/1978, A. Raw”, (UFMG); “14917-43369” and “Manaus, AM, Brasil, 08/10/1988, E. F. Morato” (UFMG); “Santa Maria, 04°13'S, 55°58'W, 14396-42535” and “Itaituba, PA, Brasil, 18/01/1979, J. M. F. Camargo” (UFMG).

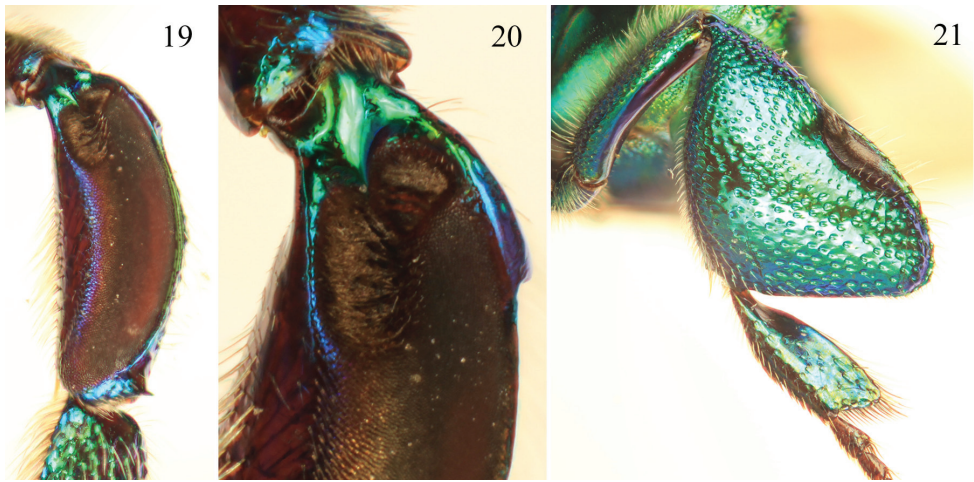
Diagnosis. *Euglossa moratoi* sp. n. can be distinguished most easily from *E. crassipunctata*, *E. sapphirina*, and *E. clausi* due to its small size (ca. 20% smaller than the other species), the projecting pronotal dorsolateral angle which is more acute (slightly pointing) at its apex (differing from the rather bluntly rounded and non-projecting angle in all other species in the *crassipunctata* group) (Fig. 17; cf. figure 2), and the longer posterior mesotibial tuft relative to those in *E. crassipunctata*, *E. sapphirina*, and *E. clausi* (Figs 19, 20); photographs of the holotypes of *E. crassipunctata* and *E. sapphirina* are in Nemésio 2009: 87). The paraocular ivory markings in *E. moratoi* are not as wide below as in the other three species (Fig. 18). Moreover, *E. moratoi* is the least bluish of all four species in this complex, with bluish coloration only on the clypeus and upper frons, mesoscutum, and S2 (Figs 16–18), although there is some variation whereby the blue is slightly more extensive but still always less so than the other species. *Euglossa crassipunctata* and *E. clausi*, on the other hand, have strong bluish hues on the metasoma, particularly the sterna and also on the metatibia in the latter species. *Euglossa sapphirina* is an entirely bluish-violet bee. The apical setae of S7 of *E. moratoi* are restricted to the very outer sides of the invaginated section, whereas such setae are distributed throughout the invaginated section in *E. clausi*, although these sterna are otherwise virtually identical between the two species. The posterolateral projections of the anterior section of S8 in *E. moratoi* are strongly prominent and angled (Fig. 22), while they are distinctly weaker in *E. clausi*, as is the development of the basolateral projections of the posterior section. The gonostylus of *E. moratoi* is comparatively shorter than in *E. clausi* and slightly upcurved (in *E. clausi* it is more straight or even slightly downcurved) (Figs 23–25). *Euglossa moratoi* is among the smallest of all *Eu-*



Figures 16–18. Photomicrographs of paratype male of *Euglossa moratoi* Nemésio and Engel, sp. n. **16** Lateral habitus **17** Dorsal habitus (arrow points to projected pronotal angle) **18** Facial aspect.

glossa. While the holotype is approximately 8.0 mm in length, some specimens barely exceed 7.0 mm.

Description. ♂: Body length ca. 8.0 mm; forewing length ca. 6.7 mm; head width 3.7 mm; interorbital distance at level of antennal sockets 2.1 mm; maximum interorbital distance 2.2 mm; labiomaxillary complex in repose reaching tip of body; scape length 0.56 mm; compound eye length 2.4 mm; mesoscutellum width 2.0 mm, length 0.93 mm; abdominal width 3.4 mm.



Figures 19–21. Tibial characters of *Euglossa moratoi* Nemésio and Engel, sp. n. **19** Outer surface of mesotibia **20** Detail of mesotibial tufts **21** Outer surface of metatibia.

Coloration and vestiture: Clypeus and upper frons dark blue, remainder of face greenish (Fig. 18); ivory paraocular markings well developed, reaching malar area, not very wide below; anterior surface of antennal scape black; mesoscutum bluish-green, mesoscutellum and metasoma green (Figs 16, 17). Wing membranes lightly infumate. Pubescence very sparse, predominantly fulvous on metasoma and around antennal sockets, black and fulvous setae on mesosoma (compared to predominantly black setae in *E. clausi*). Protibia and probasitarsus fringed with dense, fulvous setae; velvet area occupying all ventral surface of mesotibia, posterior mesotibial tuft approximately nearly one-third size of anterior tuft, triangular, slightly long and merging with anterior tuft; anterior mesotibial tuft oval, 2.5 times larger than posterior tuft (Figs 19, 20); metatibia oblong-rhomboid, inflated (Fig. 21).

Punctuation: Mesoscutum with large circular punctures separated by a puncture width or less except anteromedially separated by a puncture width or greater particularly medially; punctures on mesoscutellum sparser than on disc of mesoscutum, with larger circular punctures separated by a puncture width or greater except along borders punctures separated by less than a puncture width. Punctuation on discal base of T1 with large circular punctures of roughly same size more clearly defined medially and separated by less than a puncture width; punctuation on T1–T6 dense, comprised of small hexagonal punctures; on T7 sparse relative to preceding terga, with large circular punctures; S2 with very small, widely-separated, semicircular tufts.

Terminalia: Male terminalia as in figures 22–25. S7 largely as in *E. clausi*, with posterior margin of S7 slightly invaginated mesally, forming a shallow incision with converging sides forming an angle of $\sim 110^\circ$, lateral sections slightly curved; apical setae only on outer sides of invaginated section, comprising four alveoli (with one seta each) on each side; notospiculum weak, slightly divided apically, posterolateral projections of anterior section large and pronounced; posterior section triangular, sharply pointed



Figures 22–25. Male terminalia of *Euglossa moratoi* Nemésio and Engel, sp. n. **22** Eighth metasomal sternum (note that relative proportions of the anterior section to the posterior section may be distorted owing to position of sclerite when photographed) **23** Genital capsule, dorsal view **24** Genital capsule, lateral view **25** Genital capsule, ventral view.

apically, with prominent basolateral points; anteriormost section of gonobase curved ventrally forming an angle of $\sim 100^\circ$ with remainder of ventral edge; gonostylus simple ('type V' of Ospina-Torres et al. 2006), lateral section with lobe pointed and slightly curved upwards (*sensu* Hinojosa-Díaz 2008); gonostylar setae long throughout; dorsal process of gonocoxa well developed, apical process evenly rounded laterally.

♀: Unknown.

Etymology. The specific epithet is a patronym honoring Dr. Élder Ferreira Morato, noted entomologist and close colleague of the senior author.

Baits. Specimens of this species have been collected mostly at baits of vanillin, although a few specimens were also attracted to cineole, eugenol, and skatole.

Geographic distribution. *Euglossa moratoi* seems to be widespread in the Amazon Basin. Males have been collected from the westernmost part of the Brazilian Amazon (Nemésio and Morato 2004, 2006; Storck-Tonon et al. 2009; Oliveira et al. 2010) to the state of Pará in the east, where the holotype and some paratypes were collected. We have not examined the individuals identified as *E. crassipunctata* in Rasmussen

(2009), but it is possible that those also belong to *E. moratoi* or perhaps yet another undescribed species (this seems the most likely of the two scenarios).

Comments. Specimens of this species have been treated as *E. crassipunctata* in the literature (Nemésio and Morato 2004, 2006; Storck-Tonon et al. 2009; Oliveira et al. 2010).

***Euglossa pepeii* sp. n.**

urn:lsid:zoobank.org:act:FFEAFFD21-E49B-4313-9A5D-27313107095B

http://species-id.net/wiki/Euglossa_pepeii

Figures 26–36

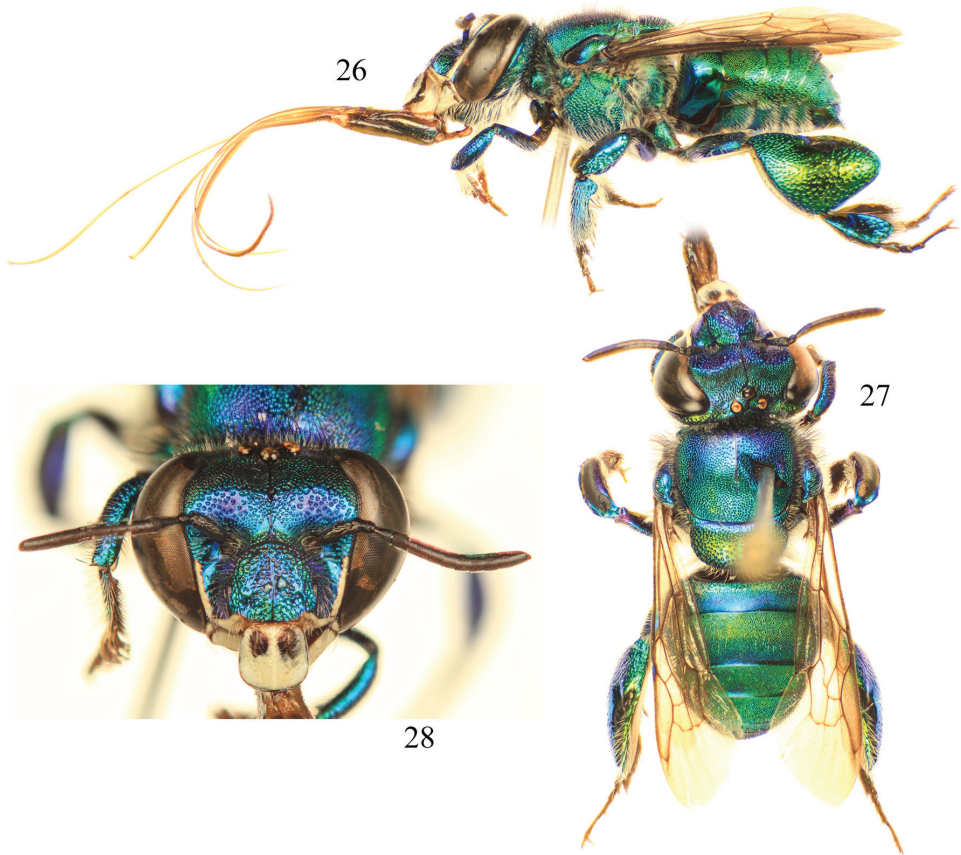
Holotype. ♂, with the following data: “Euglossina da Hileia Baiana, PN Pau Brasil, 19679-56729” and “Porto Seguro, BA, Brasil, 19/04/2009, A. Nemésio” (UFMG). Details of the type locality are: Parque Nacional do Pau Brasil (16°31'S, 39°17'W; 90 m a.s.l.), in the municipality of Porto Seguro, state of Bahia, northeastern Brazil.

Paratypes. 4♂♂, with the following label data: “Euglossina da Hileia Baiana, PN Pau Brasil, 19641-56644” and “Porto Seguro, BA, Brasil, 17/04/2009, A. Nemésio” (UFMG); “idem, 19659-56671” and “idem, 18/04/2009” (UFMG); “idem, 19706-56790” and “idem, 20/04/2009” (UFMG), and “Euglossina da Hileia Baiana, PN Descobrimto, 20601-58992” and “Prado, BA, Brasil, 18/12/2008, A. Nemésio” (SEMC).

Diagnosis. *Euglossa pepeii* is the most distinctive of the species of *crassipunctata* group. The shape and size of the anterior mesotibial tuft and the presence of a minute posterior tuft (Figs 29, 30) is most similar to that observed in *E. parvula* Dressler. However, both species can be separated by the larger size of the oval anterior tuft and the smaller glandular scar of the metatibia in *E. pepeii*. In regards to the terminalia, S8 in *E. pepeii* is distinctly more slender (*cf.* figures 33 and 37), and the gonostylus is more pronounced (*cf.* figures 34–36 versus 38–40). In addition, the bluish coloration is practically restricted to the head and discal base of the mesoscutum, and the sterna are golden green, the latter feature contrasting with other species in the group for which there are at least present some bluish hues.

Description. ♂: Body length ca. 9.5 mm; forewing length ca. 7.7 mm; head width 3.7 mm; interorbital distance at level of antennal socket 2.1 mm; maximum interorbital distance 2.6 mm; labiomaxillary complex in repose reaching apex of body; scape length 0.7 mm; compound eye length 2.7 mm; mesoscutellum width 2.3 mm, length 1.1 mm; abdominal width 3.8 mm.

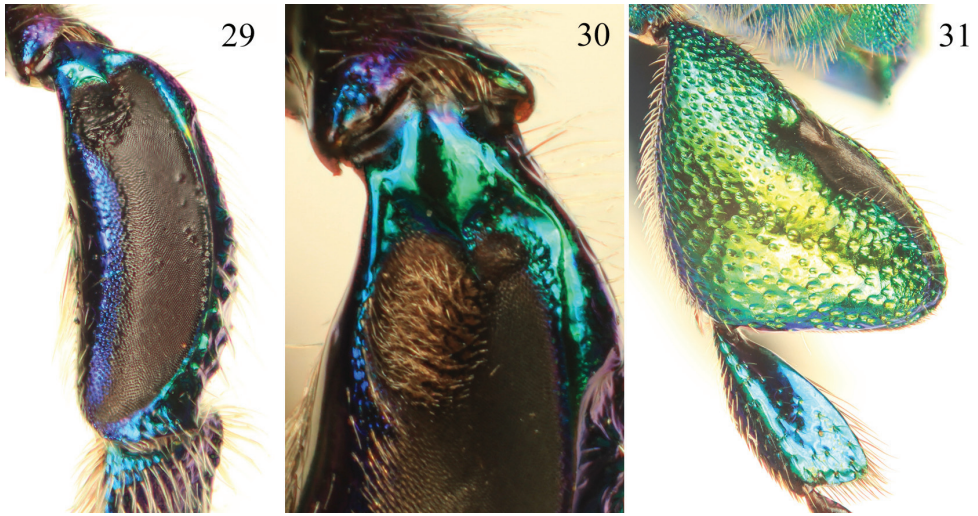
Coloration and vestiture: Clypeus and upper frons dark blue, remainder of head greenish (Fig. 28); ivory paraocular markings well developed, reaching malar area but not particularly wide below; anterior surface of antennal scape black; discal base of mesoscutum blue, remainder of mesoscutum, mesoscutellum, and metasoma green (Figs 26, 27). Wing membranes lightly infumate. Pubescence very sparse, predominantly fulvous setae on metasoma and around antennal sockets, black and fulvous setae on mesosoma, black setae especially prominent on mesoscutum (compared to



Figures 26–28. Photomicrographs of paratype male of *Euglossa pepeii* Nemésio and Engel, sp. n. **26** Lateral habitus **27** Dorsal habitus **28** Facial aspect.

predominantly fulvous setae in *E. parvula*). Protibia and probasitarsus fringed with dense, fulvous setae; velvet area occupying all ventral surface of mesotibia, posterior mesotibial tuft very small, less than 1/30 of area of anterior tuft; anterior mesotibial tuft oval, very large, occupying approximately one quarter of velvet area length (Figs 29, 30); metatibia oblong-rhomboid, inflated (Fig. 31).

Punctuation: Mesoscutum with circular punctures of two different sizes separated by less than a puncture width, those anterolaterally nearly contiguous; punctures on mesoscutellum more widely spaced than those of mesoscutal disc, with larger circular punctures separated by a puncture width or slightly less in medial third otherwise separated by less than a puncture width. Punctuation on discal base of T1 with large circular punctures, punctures weak and separated by less than a puncture width; on distal part of T1 and T2–T6 dense, consisting of minute circular punctures; on T7 dense, with large circular punctures; S2 with very small, almost inconspicuous, widely-separated tufts.



Figures 29–31. Tibial characters of *Euglossa pepeï* Nemésio and Engel, sp. n. **29** Outer surface of mesotibia **30** Detail of mesotibial tufts **31** Outer surface of metatibia.



Figures 32–36. Male terminalia of *Euglossa pepeï* Nemésio and Engel, sp. n. **32** Seventh metasomal sternum **33** Eighth sternum (note that relative proportions of the anterior section to the posterior section may be distorted owing to position of sclerite when photographed) **34** Genital capsule, dorsal view **35** Genital capsule, lateral view **36** Genital capsule, ventral view.



Figures 37–40. Male terminalia of *Euglossa parvula* Dressler. **37** Eighth metasomal sternum (note that relative proportions of the anterior section to the posterior section may be distorted owing to position of sclerite when photographed) **38** Genital capsule, dorsal view **39** Genital capsule, lateral view **40** Genital capsule, ventral view.

Terminalia: Male terminalia as in figures 32–36. Posterior margin of S7 deeply invaginated mesally, lateral sections almost straight; apical setae only on two apexes of invaginated section; notospiculum weak, slightly divided apically, posterolateral projects distinct (in this regard more similar to *E. clausi*, *E. moratoi*, and *E. parvula*); posterior section triangular, elongate, pointed apically, with basolateral projections not as prominent as in *E. clausi* and *E. moratoi*; anteriormost section of gonobase curved ventrally, forming angle of $\sim 110^\circ$ with remainder of ventral edge; gonostylus simple ('type V' of Ospina-Torres et al. 2006), lateral lobe long, pointed and almost straight; gonostylar setae short throughout; dorsal process of gonocoxa well developed, apical process evenly rounded laterally (less regularly rounded in *E. parvula*).

♀: Unknown.

Etymology. The specific epithet is a patronym honoring Leandro Mattos Santos, nicknamed "Pepê", in recognition of his accomplishments in melittology.

Baits. All four of the known males were collected at baits of vanillin.

Geographic distribution. *Euglossa pepeii* is known only from the small type series, all collected at Parque Nacional do Pau Brasil, municipality of Porto Seguro, Bahia, Brazil.

Key to species of the *crassipunctata* group

The following key is based on males given that females are not yet known for all of the included species.

- 1 Posterior mesotibial tuft at most small and inconspicuous, at most as wide as bordering posterior area of depressed integument (e.g., Figs 29, 30) **2**
- Posterior mesotibial tuft well developed and triangular, much larger and encompassing nearly entire bordering area of depressed integument (e.g., Figs 4, 5, 19, 20)..... **3**
- 2 Mesoscutellum with punctures medially separated by a puncture width or less (rarely more so); male terminalia as in figures 32–36 ***E. pepeii* sp. n.**
- Mesoscutellum with punctures medially a puncture width or frequently more; male terminalia as in figures 37–40..... ***E. parvula* Dressler, 1982**
- 3 S8 with posterolateral projections of anterior section prominently angled (e.g., Fig. 12) **4**
- S8 posterolateral projections of anterior section not developed, rounded (e.g., Figs 8, 22) **5**
- 4 Pronotal dorsolateral angle rounded, not projecting (Fig. 2); mesoscutellum with punctures of most of disc separated by a puncture width or less except medioposteriorly some wider than a puncture width; posterolateral projection of anterior section of S8 angled but not prominent (Fig. 8)..... ***E. clausi* sp. n.**
- Pronotal dorsolateral angle projecting, acute (Fig. 17); mesoscutellum with punctures of most of disc separated by a puncture width or slightly more and distinctly more medioposteriorly; posterolateral projection of anterior section of S8 angled and strongly prominent (Fig. 22)..... ***E. moratoi* sp. n.**
- 5 Mesoscutum, mesoscutellum, and majority of mesoscutum brilliant metallic green; S8 apically coming to a sharp, narrow point; gonostylus with broader base..... ***E. crassipunctata* Moure, 1968**
- Integument entirely dark metallic blue to bluish violet; S8 apically coming to a broad point; gonostylus with narrow base ***E. sapphirina* Moure, 1968**

Discussion

Recent phylogenetic studies on the interrelationships among species of *Euglossa* and based on both morphological and DNA sequence data (Ramírez et al. 2010; Hinojosa-Díaz 2010, in prep.), have highlighted that many of the traditionally recognized groups, either subgenera or species assemblages, are likely monophyletic. Nonetheless, these works have also highlighted those few groups whose monophyly remains suspect and are in need of careful attention. Most notably among those are the subgenera *Glossura* Cockerell and *Glossurella*. In regard to the former, Nemésio and Ferrari (2011) suggested that the simple synonymy of *Glossuropoda* Moure under *Glossura* would rec-

tify the difficulty. The situation of *Glossurella* is more problematic and certainly more detailed phylogenetic studies and, perhaps most critically, the redescription of historical material and documentation of additional species within this assemblage would perhaps most greatly illuminate possible solutions. Documenting further species, such as the three described herein, enhances our understanding of variation and diversity within *Glossurella* and provides further taxa for use in future more comprehensive phylogenetic studies of the group.

When establishing *Glossurella*, Dressler (1982b) suggested the subdivision of the subgenus into species groups, the first of those comprising *E. crassipunctata*, *E. sapphirina*, and *E. parvula*. All three species are quite similar superficially and are also among the smallest of orchid bees. Moure (1968) particularly emphasized the presence of dense punctation, with small punctures on the sixth metasomal tergum, a character which, according to him, was only present in *E. crassipunctata* and *E. sapphirina*. The three species described herein, as well as *E. parvula* (unknown to Moure in 1968), also share this particular character, reinforcing their mutual affinity.

After describing *E. crassipunctata* and *E. sapphirina*, Moure (1968: 43) mentioned that he was unable to find morphological features distinguishing both species outside of their coloration, preferring to erect the two taxa given that he could not find intermediates. The possibility of polymorphic species occurred to Moure (1968) and later to Nemésio (2009), who argued that,

“... in favor of this hypothesis is the fact that both species are morphologically indistinguishable, except for coloration... and that they occur sympatrically – at least *Eg. crassipunctata* is sympatric with *Eg. sapphirina* in the entire distributional range of the latter. Against this hypothesis is the fact that, strangely, the possible polymorphism is restricted to a relatively small area of the wide geographic range of *Eg. crassipunctata*.” (Nemésio 2009: 86).

At the time the above statements were made the populations considered herein as two distinct species, *E. moratoi* and *E. clausi*, were treated as *E. crassipunctata*. Our revised interpretation of this material restricts the geographic distribution of *E. crassipunctata* to Central America, where it is sympatric with *E. sapphirina*. More importantly, there are slight differences in the structure of the male terminalia of both species, particularly in the form of S8 between Central American populations (MSE pers. obs.). As noted above, variation within a species for some genitalic structures is known (e.g., Hinojosa-Díaz and Engel 2011a) but this is not consistent across the genus and for many they can be relatively fixed. Molecular data may be of aid in clarifying the status of these two taxa.

While *E. clausi* and *E. moratoi* are remarkably similar superficially to *E. crassipunctata*, the form of the male terminalia serves to most strongly distinguish these species. For instance, the posterolateral projection of the anterior section of S8 in *E. crassipunctata* is scarcely developed and gently rounded, while this process is more developed in the new species, each forming a noticeable angle, although it is most extremely developed in *E. moratoi*. Lastly, the basolateral projections of the posterior section are much more prominent in the two new species relative to that of *E. crassipunctata* (it should

be noted that these same differences hold for comparisons between the new species and *E. sapphirina*). In addition, the lateral section of the gonostylus is significantly shorter and narrower in *E. crassipunctata*, with a noticeably slender and elongate lateral lobe, while all of these structures are much broader and more prominent in *E. moratoi* and *E. clausi*. Undoubtedly, all of these species are closely related, but each is clearly distinct as evidenced by the male terminalia.

With the addition of the species described here, the *crassipunctata* species group comprises six species, which appear to fall into two subgroups. The first, the *crassipunctata* subgroup (*sensu strictissimo*) includes *E. crassipunctata*, *E. sapphirina*, *E. moratoi*, and *E. clausi* all with a triangular and well developed posterior mesotibial tuft. The second, or the *parvula* subgroup, consists of *E. parvula* and *E. pepeii*, both with a posterior mesotibial tuft lacking or at most very small and inconspicuous (nearly vestigial). Both subgroups are represented in the Amazon and the Atlantic forests, but only the first subgroup is present in Central America.

In closing, it is significant to note the distinctiveness and apparent endemism of *E. pepeii*, while *E. moratoi* and *E. clausi* are likely more common in collections, although undoubtedly misidentified as *E. crassipunctata*. *Euglossa pepeii* is presently known only from five specimens in a restricted area in Bahia, and the same region where species such as *E. cyanochlora* Moure and *Exaerete salsai* Nemésio are also endemic. Among all species of the *crassipunctata* group, *E. pepeii* is the most distinctive in terms of both its external morphology and genitalia. It is greatly hoped that future collecting will bring more material of this species, particularly the unknown female, and permit a more thorough understanding of its biology and distribution.

Acknowledgements

We are grateful to Prof. Dr. Marcelo O. Gonzaga (Universidade Federal de Uberlândia) and Dr. Ismael A. Hinojosa-Díaz (Emory University) for assistance with photomicrography, to Prof. Dr. Charles D. Michener (University of Kansas) for his continued mentorship, to two anonymous reviewers for their helpful comments which improved the final version, and to Dr. Michael Ohl (Museum für Naturkunde) for his valuable assistance and advice as editor. Partial support was provided by US National Science Foundation grant DBI-1057366 (to MSE).

References

- Bembé B (2007) Revision der *Euglossa cordata*-Gruppe und Untersuchungen zur Funktionsmorphologie und Faunistik der Euglossini (Hymenoptera, Apidae). Entomofauna, Supplement 14: 1–146.
- Bembé B (2008) *Euglossa laurensi* sp. n. – Eine neue Prachtbienenart aus Bolivien (Hymenoptera, Apidae, Euglossini). Mitteilungen der Münchner Entomologischen Gesellschaft 98: 59–65.

- Dodson CH, Dressler RL, Hills HG, Adams RM, Williams NH (1969) Biologically active compounds in orchid fragrances. *Science* 164(3885): 1243–1249. doi: 10.1126/science.164.3885.1243
- Dressler RL (1978) New species of *Euglossa* from Mexico and Central America. *Revista de Biología Tropical* 26(1): 167–185.
- Dressler RL (1982a) New species of *Euglossa* II. (Hymenoptera: Apidae). *Revista de Biología Tropical* 30(2): 121–129.
- Dressler RL (1982b) New species of *Euglossa* III. The *bursigera* species group (Hymenoptera: Apidae). *Revista de Biología Tropical* 30(2): 131–140.
- Dressler RL (1982c) New species of *Euglossa* IV. The *cordata* and *purpurea* species groups (Hymenoptera: Apidae). *Revista de Biología Tropical* 30(2): 141–150.
- Eltz T, Fritsch F, Ramírez Pech J, Zimmermann Y, Ramírez SR, Quezada-Euan JJG, Bembé B (2011) Characterization of the orchid bee *Euglossa viridissima* (Apidae: Euglossini) and a novel cryptic sibling species, by morphological, chemical, and genetic characters. *Zoological Journal of the Linnean Society* 163(4): 1064–1076. doi: 10.1111/j.1096-3642.2011.00740.x
- Engel MS (1999) The first fossil *Euglossa* and phylogeny of the orchid bees (Hymenoptera: Apidae; Euglossini). *American Museum Novitates* 3272: 1–14.
- Engel MS (2001) A monograph of the Baltic amber bees and evolution of the Apoidea (Hymenoptera). *Bulletin of the American Museum of Natural History* 259: 1–192. doi: 10.1206/0003-0090(2001)259<0001:AMOTBA>2.0.CO;2
- Faria LRR, Melo GAR (2011) A new species of *Eufriesea* Cockerell (Hymenoptera, Apidae, Euglossina) from northeastern Brazil. *Revista Brasileira de Entomologia* 55(1): 35–39. doi: 10.1590/S0085-56262011000100007
- Faria LRR, Melo GAR (2012) Species of *Euglossa* of the *analis* group in the Atlantic forest (Hymenoptera, Apidae). *Zoologia* 29(4): 349–374. doi: 10.1590/S1984-46702012000400008
- Hinojosa-Díaz IA (2008) Male genitalic morphology of orchid bees of the genus *Euglossa* (Hymenoptera: Apidae). *Scientific Papers, Natural History Museum, University of Kansas* 41: 1–19.
- Hinojosa-Díaz IA (2010) Comparative Genital Morphology, Phylogeny, and Classification of the Orchid Bee Genus *Euglossa* Latreille (Hymenoptera: Apidae), with Distributional Modeling of Adventive Euglossines. PhD Dissertation, University of Kansas, Lawrence, Kansas, ii+209 pp.
- Hinojosa-Díaz IA, Engel MS (2007) Two new orchid bees of the subgenus *Euglossella* from Peru (Hymenoptera: Apidae). *Beitrage zur Entomologie* 58(1): 97–105.
- Hinojosa-Díaz IA, Engel MS (2011a) Revision of the orchid bee subgenus *Euglossella* (Hymenoptera, Apidae), part I, the *decorata* species group. *ZooKeys* 140: 27–69. doi: 10.3897/zookeys.140.1923
- Hinojosa-Díaz IA, Engel MS (2011b) *Euglossa williamsi*, a new species of orchid bee from the Amazon Basin of Ecuador and Peru, with notes on its taxonomic association and biogeography (Hymenoptera, Apidae). *ZooKeys* 159: 49–63. doi: 10.3897/zookeys.159.2239
- Hinojosa-Díaz IA, Melo GAR, Engel MS (2011) *Euglossa obrima*, a new species of orchid bee from Mesoamerica, with notes on the subgenus *Dasystilbe* Dressler (Hymenoptera, Apidae). *ZooKeys* 97: 11–29. doi: 10.3897/zookeys.97.1106

- Hinojosa-Díaz IA, Nemésio A, Engel MS (2012) Two new species of *Euglossa* from South America, with notes on their taxonomic affinities (Hymenoptera, Apidae). *ZooKeys* 221: 63–79. doi: 10.3897/zookeys.221.3659
- Michener CD (1944) Comparative external morphology, phylogeny, and a classification of the bees (Hymenoptera). *Bulletin of the American Museum of Natural History* 82(6): 151–326.
- Michener CD (2007) *The Bees of the World* [2nd Edition]. Johns Hopkins University Press, Baltimore, xvi+[i]+953 pp., +20 pls.
- Milet-Pinheiro P, Schlindwein C (2005) Do euglossine males (Apidae, Euglossini) leave tropical rainforest to collect fragrances in sugarcane monocultures? *Revista Brasileira de Zoologia* 22(4): 853–858. doi: 10.1590/S0101-81752005000400008
- Moura DC, Schlindwein C (2009) Mata ciliar do rio São Francisco como biocorredor para Euglossini (Hymenoptera: Apidae) de florestas tropicais úmidas. *Neotropical Entomology* 38(2): 281–284. doi: 10.1590/S1519-566X2009000200018
- Moure JS (1968) Espécies novas de *Euglossa* da América Central (Hymenoptera: Apidae). *Boletim da Universidade Federal do Paraná, Zoologia* 3(2): 13–64.
- Moure JS (1969) The Central American species of *Euglossa* subgenus *Glossura* Cockerell, 1917 (Hymenoptera, Apidae). *Revista de Biología Tropical* 15(2): 227–247.
- Moure JS (1970) The species of euglossine bees of Central America belonging to the subgenus *Euglossella* (Hymenoptera-Apidae). *Anais da Academia Brasileira de Ciências* 42(1): 148–157.
- Nemésio A (2006) *Euglossa anodorhynchi* sp. n. (Hymenoptera: Apidae), a new orchid bee from southern Brazil. *Neotropical Entomology* 35(2): 206–209. doi: 10.1590/S1519-566X2006000200008
- Nemésio A (2007a) Three new species of *Euglossa* Latreille (Hymenoptera: Apidae) from Brazil. *Zootaxa* 1547: 21–31.
- Nemésio A (2007b [2008]) *Eufriesea atlantica* sp. n. (Hymenoptera: Apidae), a new orchid bee from the Brazilian Atlantic Forest. *Lundiana* 8(2): 147–152.
- Nemésio A (2009) Orchid bees (Hymenoptera: Apidae) of the Brazilian Atlantic Forest. *Zootaxa* 2041: 1–242.
- Nemésio A (2010a) *Eulaema (Apeulaema) felipei* sp. n. (Hymenoptera: Apidae: Euglossina): A new forest-dependent orchid bee found at the brink of extinction in northeastern Brazil. *Zootaxa* 2424: 51–62.
- Nemésio A (2010b) The orchid-bee fauna (Hymenoptera: Apidae) of a forest remnant in northeastern Brazil, with new geographic records and an identification key to the known species of the Atlantic Forest of northeastern Brazil. *Zootaxa* 2656: 55–66.
- Nemésio A (2011a) The orchid-bee fauna (Hymenoptera: Apidae) of a forest remnant in southern Bahia, Brazil, with new geographic records and an identification key to the known species of the area. *Zootaxa* 2821: 47–54.
- Nemésio A (2011b) *Euglossa marianae* sp. n. (Hymenoptera: Apidae): A new orchid bee from the Brazilian Atlantic Forest and the possible first documented local extinction of a forest-dependent orchid bee. *Zootaxa* 2892: 59–68.
- Nemésio A (2011c) *Exaerete salsai* sp. n. (Hymenoptera: Apidae): A new orchid bee from eastern Brazil. *Zootaxa* 2967: 12–20.

- Nemésio A (2011d) *Euglossa bembai* sp. n. (Hymenoptera: Apidae): A new orchid bee from the Brazilian Atlantic Forest belonging to the *Euglossa cybelia* Moure, 1968 species group. *Zootaxa* 3006: 43–49.
- Nemésio A (2012) Species of *Euglossa* Latreille, 1802 (Hymenoptera: Apidae: Euglossina) belonging to the *purpurea* species group occurring in eastern Brazil, with description of *Euglossa monnei* sp. n. *Zootaxa* 3151: 33–52.
- Nemésio A, Bembé B (2008) A new species of *Eufriesea* from Bolivia, and rearrangement of the *Eufriesea auripes* species group (Hymenoptera: Apidae). *Spixiana* 31(2): 241–246.
- Nemésio A, Ferrari RR (2011) Species of *Euglossa* (*Glossura*) and *E.* (*Glossuropoda*) (Hymenoptera: Apidae: Euglossina) occurring in the Amazon, including new records for Brazil. *Zootaxa* 2885: 1–13.
- Nemésio A, Ferrari RR (2012) The species of *Eulaema* (*Eulaema*) Lepeletier, 1841 (Hymenoptera: Apidae: Euglossina) from eastern Brazil, with description of *Eulaema quadragintanovem* sp. n. from the state of Ceará. *Zootaxa* 3478: 123–132.
- Nemésio A, Morato EF (2004) Euglossina (Hymenoptera: Apidae: Apini) of the Humaitá Reserve, Acre State, Brazilian Amazon, with comments on bait trap efficiency. *Revista de Tecnologia e Ambiente* 10(2): 71–80.
- Nemésio A, Morato EF (2006) The orchid-bee fauna (Hymenoptera: Apidae) of Acre State (northwestern Brazil) and a re-evaluation of euglossine bait-trapping. *Lundiana* 7(1): 59–64.
- Nemésio A, Rasmussen C (2011) Nomenclatural issues in the orchid bees (Hymenoptera: Apidae: Euglossina) and an updated catalogue. *Zootaxa* 3006: 1–42.
- Nemésio A, Silveira FA (2006a) Edge effects on the orchid-bee fauna (Hymenoptera: Apidae) at a large remnant of Atlantic rain forest in southeastern Brazil. *Neotropical Entomology* 35(3): 313–323. doi: 10.1590/S1519-566X2006000300004
- Nemésio A, Silveira FA (2006b) First record of *Eulaema helvola* (Hymenoptera: Apidae: Euglossina) for the State of Minas Gerais: Biogeographic and taxonomic implications. *Neotropical Entomology* 35(3): 418–420. doi: 10.1590/S1519-566X2006000300021
- Nemésio A, Silveira FA (2007) Diversity and distribution of orchid bees (Hymenoptera: Apidae: Euglossina) with a revised checklist of their species. Biogeographic and taxonomic implications. *Neotropical Entomology* 36(6): 874–888.
- Neves EL, Viana BF (2003) A fauna de abelhas da subtribo Euglossina (Hymenoptera: Apidae) do estado da Bahia, Brasil. In: Melo GAR, Alves-dos-Santos I (Eds) *Apoidea Neotropica: Homenagem aos 90 Anos de Jesus Santiago Moure*. Editora UNESC [Universidade do Extremo Sul Catarinense], Criciúma, 223–229. [total volume xvi+320 pp.]
- Oliveira ML (2006) Três novas espécies de abelhas da Amazônia pertencentes ao gênero *Eulaema* (Hymenoptera: Apidae: Euglossini). *Acta Amazonica* 36(1): 121–128. doi: 10.1590/S0044-59672006000100015
- Oliveira ML (2011) Notas taxonômicas sobre *Exaerete* (Hymenoptera: Apidae: Euglossina), com a descrição de uma nova espécie. *Biota Neotropica* 11(1): 129–132. doi: 10.1590/S1676-06032011000100012
- Oliveira ML, Nemésio A (2003) *Exaerete lepeletieri* (Hymenoptera: Apidae: Apini: Euglossina): A new species of cleptoparasitic bee from Amazonia. *Lundiana* 4(2): 117–120.

- Oliveira ML, Silva SJR, Silva MC, Araújo ACO, Albuquerque MIC, Tavares SF (2010) Abelhas de Roraima: Por que tantas espécies em tão pouco espaço? In: Barboza RI, Melo VF (Eds) Roraima: Homem, Ambiente e Ecologia. INPA, Manaus, 523–540.
- Ospina-Torres R, Parra-H A, Gonzalez VH (2006) The male gonostylus of the orchid bee genus *Euglossa* (Apidae: Euglossini). Zootaxa 1320: 49–55.
- Parra A, Ospina-Torres R, Ramírez S (2006) *Euglossa natesi* n. sp., a new species of orchid bee from the Chocó region of Colombia and Ecuador (Hymenoptera: Apidae). Zootaxa 1298: 29–36.
- Ramírez S (2005) *Euglossa paisa*, a new species of orchid bee from the Colombian Andes (Hymenoptera: Apidae). Zootaxa 1065: 51–60.
- Ramírez S (2006) *Euglossa samperi* n. sp., a new species of orchid bee from the Ecuadorian Andes (Hymenoptera: Apidae). Zootaxa 1272: 61–68.
- Ramírez SR, Roubik DW, Skov C, Pierce NE (2010) Phylogeny, diversification patterns and historical biogeography of euglossine orchid bees (Hymenoptera: Apidae). Biological Journal of the Linnean Society 100(3): 552–572. doi: 10.1111/j.1095-8312.2010.01440.x
- Rasmussen C (2009) Diversity and abundance of orchid bees (Hymenoptera: Apidae, Euglossini) in a tropical rainforest succession. Neotropical Entomology 38(1): 66–73. doi: 10.1590/S1519-566X2009000100006
- Rasmussen C, Skov C (2006) Description of a new species of *Euglossa* (Hymenoptera: Apidae: Euglossini) with notes on comparative biology. Zootaxa 1210: 53–67.
- Roubik DW (2004) Sibling species of *Glossura* and *Glossurogoda* in the Amazon region (Hymenoptera: Apidae: Euglossini). Journal of the Kansas Entomological Society 77(3): 235–253. doi: 10.2317/0308.20.1
- Storck-Tonon D, Morato EF, Oliveira ML (2009) Fauna de Euglossina (Hymenoptera: Apidae) da Amazônia sul-ocidental, Acre, Brasil. Acta Amazonica 39(3): 693–706. doi: 10.1590/S0044-59672009000300026
- Tonhasca A Jr, Blackmer JL, Albuquerque GS (2002a) Abundance and diversity of euglossine bees in the fragmented landscape of the Brazilian Atlantic Forest. Biotropica 34(3): 416–422.
- Tonhasca A Jr, Blackmer JL, Albuquerque GS (2002b) Within-habitat heterogeneity of euglossine bee populations: A re-evaluation of the evidence. Journal of Tropical Ecology 18(6): 929–933.
- Tonhasca A Jr, Albuquerque GS, Blackmer JL (2003) Dispersal of euglossine bees between fragments of the Brazilian Atlantic Forest. Journal of Tropical Ecology 19(1): 99–102.
- Vogel S (1966) Parfümsammelnde Bienen als Bestäuber von Orchidaceen und *Gloxinia*. Österreichisches Botanische Zeitschrift 113(3/4): 302–361.