

The large carpenter bees of central Saudi Arabia, with notes on the biology of *Xylocopa sulcatipes* Maa (Hymenoptera, Apidae, Xylocopinae)

Mohammed A. Hannan¹, Abdulaziz S. Alqarni¹,
Ayman A. Owayss¹, Michael S. Engel²

1 Department of Plant Protection, College of Food and Agriculture Sciences, King Saud University, Riyadh 11451, PO Box 2460, KSA **2** Division of Entomology, Natural History Museum, and Department of Ecology & Evolutionary Biology, 1501 Crestline Drive – Suite 140, University of Kansas, Lawrence, Kansas 66049-2811, USA

Corresponding author: *Abdulaziz S. Alqarni* (alqarni@ksu.edu.sa)

Academic editor: *Michael Ohl* | Received 17 April 2012 | Accepted 16 May 2012 | Published 14 June 2012

Citation: Hannan MA, Alqarni AS, Owayss AA, Engel MS (2012) The large carpenter bees of central Saudi Arabia, with notes on the biology of *Xylocopa sulcatipes* Maa (Hymenoptera, Apidae, Xylocopinae). ZooKeys 201: 1–14. doi: 10.3897/zookeys.201.3246

Abstract

The large carpenter bees (Xylocopinae, *Xylocopa* Latreille) occurring in central Saudi Arabia are reviewed. Two species are recognized in the fauna, *Xylocopa* (*Koptortosoma*) *aestuans* (Linnaeus) and *X.* (*Ctenoxylocopa*) *sulcatipes* Maa. Diagnoses for and keys to the species of these prominent components of the central Saudi Arabian bee fauna are provided to aid their identification by pollination researchers active in the region. Females and males of both species are figured and biological notes provided for *X. sulcatipes*. Notes on the nesting biology and ecology of *X. sulcatipes* are appended. As in studies for this species from elsewhere, nests were found in dried stems of *Calotropis procera* (Aiton) (Asclepiadaceae) and *Phoenix dactylifera* L. (Arecaceae).

Keywords

Apoidea, Anthophila, Xylocopini, Arabian Peninsula, systematics, biology, host plants, nesting

Introduction

The tribe Xylocopini comprises the large carpenter bees (Xylocopinae: *Xylocopa* Latreille) species of which principally nest in dead wood (including the wood of human constructions), bamboo culms, and other similar substrates (e.g., Hurd 1958,

1978; Hurd and Moure 1960, 1963; Sakagami and Laroca 1971; Gerling et al. 1983, 1989; Maeta et al. 1985, 1996; Raju and Rao 2006; Boontop et al. 2008; Gonzalez et al. 2009; Pereira and Garófalo 2010; Prager and Hunter 2011), and Le Goff (2004) even records a species emerging from the wood of a Senegalese ceremonial mask. Owing to their conspicuousness, interesting biology and behavior, and agricultural potential (e.g., Keasar 2010), the group has received increased systematic scrutiny, although most recent work has focused on relationships among the tribes of the subfamily or those of the constituent genera and subgenera (e.g., Minckley 1998; Engel 2001, in press; Leys et al. 2002; Flores-Prado et al. 2010). Meanwhile, the number of detailed, species-level revisions has lagged over the last 15 years (although when done, there are some very nice examples: e.g., Leys 2000) despite the fact that it is at this level for which the documentation and interpretation of biological phenomena is most critical (e.g., Engel 2011). Today, the diversity of carpenter bees in many areas of the world remains largely unexplored.

As part of an on-going effort to survey the bee fauna and pollinator resources of the Kingdom of Saudi Arabia and to eliminate the taxonomic impediment for working on this diverse region, we have begun with surveys of the melittofauna from central Saudi Arabia. Herein we provide a brief contribution to this larger effort by documenting the species of the large carpenter bees occurring in this area and as an aid to studies of wild bee pollination already underway (Hannan et al. in prep.). Two species are recognized from the region, *Xylocopa* (*Koptortosoma*) *aestuans* (Linnaeus) and *X.* (*Ctenoxylocopa*) *sulcatipes* Maa, although the latter may be frequently found misidentified in some collections as *X.* (*Xylomelissa*) *hottentotta* Smith or *X.* (*C.*) *fenestrata* (Fabricius) (e.g., Al-Ahmadi and Salem 1999). *Xylocopa hottentotta* is an entirely unrelated species of African distribution (Eardley 1983, 1993), while *X. fenestrata* is certainly very closely allied to *X. sulcatipes* but occurs more easterly and southerly (Maa 1970). The latter species is quite similar but can be readily distinguished on the basis of the male terminalia (Maa 1970, and figures herein, *vide infra*). In total five nominal species have been recorded from throughout the Arabian Peninsula [e.g., Al-Ahmadi and Salem 1999: recorded as *X. aestuans*, *X. hottentotta*, *X. caffra* (Linnaeus), and *X. valga*?], but many of these seem to be misidentifications (e.g., *X. hottentotta*) and thorough collecting and new identifications, particularly with comparisons to holotypes, is desperately needed. Diagnoses, figures (particularly the male terminalia), and keys are provided so as to aid regional entomologists in the identification of their material. In addition, we append observations on the biology and ecology of *X. sulcatipes*.

Material and methods

Material examined herein is deposited in the King Saud University Museum of Arthropods, Plant Protection Department, College of Food and Agriculture Sciences, King Saud University, Riyadh, Kingdom of Saudi Arabia (KSMA) and Division of Entomology (Snow Entomological Collections), University of Kansas Natural History

Museum, Lawrence, Kansas, USA (SEMC). Photomicrographs were prepared using a Nikon D1x digital camera attached to an Infinity K-2 long-distance microscope lens. Morphological terminology in the diagnoses follows that of Engel (2001) and Michener (2007). Herein we follow the supraspecific classification of Xylocopini advocated by Minckley (1998) and Michener (2007).

The nesting biology of *X. sulcatipes* was studied in Amariah, approximately 25 km northwest of Riyadh, from September 2010 through December 2011. Nests were found on 6 June 2011 at the base of a large hill near an agricultural farm near Wadi Amariah and the highway to Riyadh. Prior to collection the nests were observed for at least an hour to note the coming and going of bees. Most nests were located around 9:00am and collected around 12:00pm. Nests were sealed with plastic and brought to the lab for dissection and study. During four visits (6, 12, 19 June and 28 September 2011) a total of 13 nests were collected (Table 1). Nests were in the dead branches of local milkweeds [*Calotropis procera* (Aiton) (Asclepiadaceae), more widely known as the “Apple of Sodom”] growing in a sparsely vegetative desert area and among date palms, *Phoenix dactylifera* L. (Arecaceae). Nests were measured, sketched, and photographed, and the inhabitants deposited in the KSMA repository.

Table 1. Measurements of sampled nests of *Xylocopa* (*Ctenoxylocopa*) *sulcatipes* Maa from central Saudi Arabia collected in dead wood of two plants. Means are given with standard deviations. n = number of nests sampled for each metric.

	Asclepiadaceae	Arecaceae
Metric	<i>Calotropis procera</i> (Aiton)	<i>Phoenix dactylifera</i> L.
Branch length (cm)	147.75±74.59 (n=8)	57.33±6.53 (n=6)
Nest entrance (mm)	9.06±0.78 X 8.85±0.86 (n=8)	10.17±2.17 X 11±2 (n=7)
Height of nest from ground (cm)	83.50±30.3 (n=8)	400±0 (n=6)
Length of nest (cm)	23.61±14.93 (n=7)	11.05±4.36 (n=6)
Branch diameter at nest (cm)	1.88±0.38 (n=8)	6.83±0.41 (n=6)
Internal diameter of nest (cm)	1.28±0.19 (n=8)	1.77±0.12 (n=6)
Number of cells/nest	6.60±5.6 (n=5)	4.50±1.64 (n=6)
Length of cells (mm)	18.8±1.63 (n=30)	20.11±1.37 (n=19)

Systematics

Genus *Xylocopa* Latreille

Subgenus *Koptortosoma* Gribodo

This is the largest and most widespread subgenus of carpenter bees, with at least 196 recognized species ranging throughout Subsaharan Africa to the Mediterranean countries of that continent, Dalmatia, the Arabian Peninsula, southwestern Asia, and southern Asia east to the Philippines, Taiwan, and Japan, and south through Indonesia, New Guinea, and the Bismarck Archipelago to southernmost Australia (Michener 2007). The subgenus can be recognized by the female mesoscutellum having a sharp truncation overhanging the

metanotum (as in subgenus *Mesotrichia* Westwood) and surpassing the posterior margin of the latter, and males with unmodified tegulae (elongate in *Mesotrichia*) (Michener 2007).

***Xylocopa (Koptortosoma) aestuans* (Linnaeus)**

http://species-id.net/wiki/Xylocopa_aestuans

Figs 1–11

Apis aestuans Linnaeus, 1758: 579 [♀].

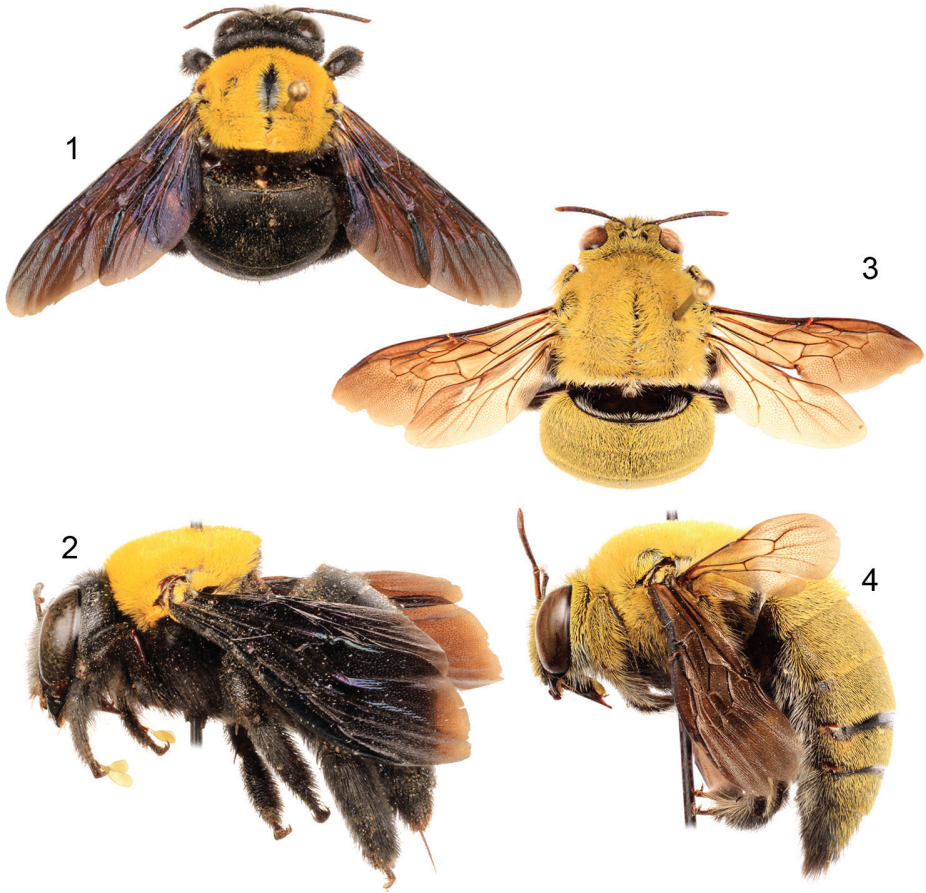
Xylocopa aestuans (Linnaeus); Illiger 1806: 151.

Diagnosis. *Xylocopa aestuans* can be most readily distinguished from other Saudi Arabian large carpenter bees by the following: female face with largely white or pale pubescence (Fig. 5), mesosomal dorsum densely covered by yellow pubescence obscuring underlying integument (Figs 1, 2); mandible bidentate at apex; posterodorsal margin of mesoscutellum projecting beyond posterior margin of metanotum; pygidial plate unarmed. Male covered by dense yellow pubescence (Figs 3, 4, 6); first metasomal tergum with subhorizontal dorsal surface abruptly and angulately separated from declivitous anterior surface; gradulus of first metasomal tergum transverse, lateral extremities not directed posteriorly; male terminalia as in figures 7–11.

Comments. *Xylocopa aestuans* is one of the widespread and ubiquitous of large carpenter bee species. There has been considerable debate regarding the identity of the species of *Koptortosoma* similar to *X. aestuans* (i.e., considering them synonyms, subspecies, or separate species), with different authors of varying opinions how to segregate the minor variation into natural taxonomic entities (e.g., Lieftinck 1964). The Saudi Arabian populations have been at times considered to belong to the largely African, *X. pubescens* Spinola, although the genitalia of those populations are quite dissimilar from true *X. pubescens*. Indeed, the genitalia (Figs. 7–11) and other characters are certainly more alike the more easterly populations of *X. aestuans* and there seems little reason at this time to not consider the central Saudi Arabian populations as such, as was done by Shalaby (1961). The species has also been recorded from the United Arab Emirates (Harten 2005; Dathe 2009). Biological accounts, largely from India or Southeast Asia, have been provided by Dover (1924), Monod (1977), Binti (1992), El-Borollosy and Ismail (1972: note that these observations may be of *X. pubescens*, the identity of their material requires checking), and Punekar et al. (2010).

Subgenus *Ctenoxylocopa* Michener

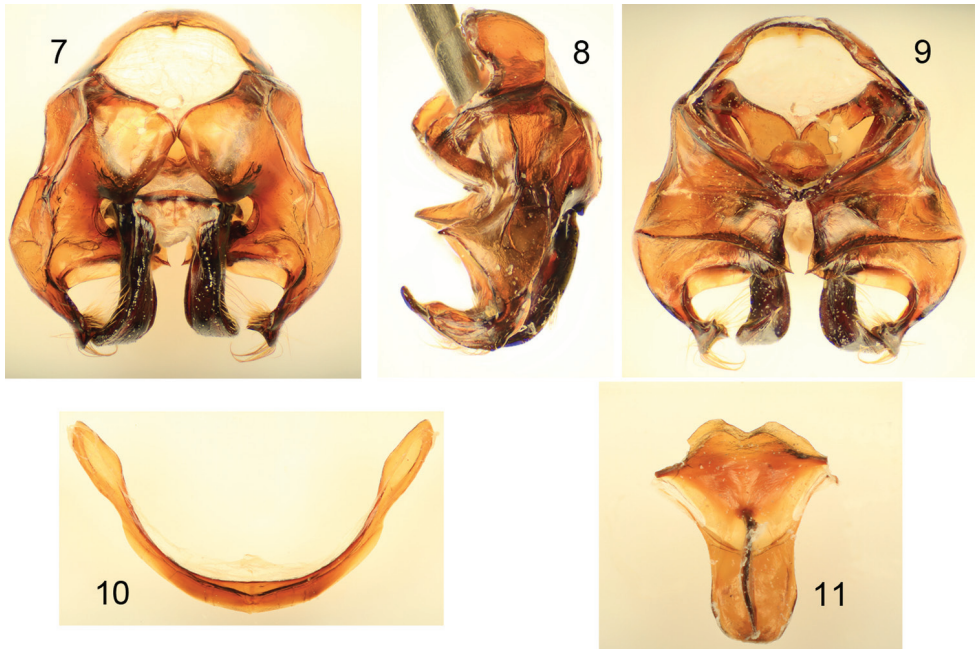
This is a widespread, albeit not very diverse, subgenus of Old World carpenter bees (Maa 1970; Michener 2007). The lineage can be recognized by the prolonged posterior pronotal lobes and elevated process of the spiracles on the third metasomal tergum in



Figures 1–4. Habitus photomicrographs of *Xylocopa* (*Koptortosoma*) *aestuans* (Linnaeus) from central Saudi Arabia. **1** Female, dorsal **2** Female, lateral **3** Male, dorsal **4** Male, lateral.



Figures 5–6. Faces of *Xylocopa* (*Koptortosoma*) *aestuans* (Linnaeus) from central Saudi Arabia. **5** Female **6** Male.



Figures 7–11. Male terminalia of *Xylocopa (Koptortosoma) aestuans* (Linnaeus) from central Saudi Arabia. **7** Genital capsule, dorsal aspect **8** Genital capsule, lateral aspect **9** Genital capsule, ventral aspect **10** Seventh metasomal sternum **11** Eighth metasomal sternum.

males, while females are noteworthy for the combination of a row of tubercles along each margin of the metabasitibial plate, the tridentate mandibles, and a single spine on the outer apex of the metatibia.

***Xylocopa (Ctenoxylocopa) sulcatipes* Maa**

http://species-id.net/wiki/Xylocopa_sulcatipes

Figs 12–22

Xylocopa (Ctenoxylocopa) sulcatipes Maa, 1970: 739 [♂♀].

Diagnosis. *Xylocopa sulcatipes* can be most readily distinguished from other Arabian large carpenter bees by the following: Female with face with largely black pubescence (Fig. 16), mesosomal dorsum largely covered by black pubescence not obscuring underlying integument (Figs 12, 13); mandible tridentate at apex; mesoscutellum not projecting over metanotum, apical margin rounded in profile; pygidial plate armed on each side with subapical spine. Male covered by largely fuscous to black pubes-



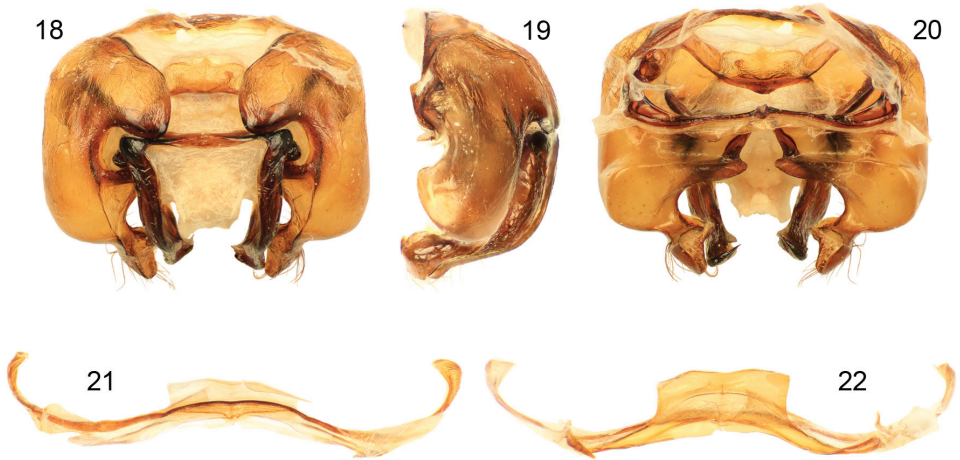
Figures 12–15. Habitus photomicrographs of *Xylocopa* (*Ctenoxylocopa*) *sulcatipes* Maa from central Saudi Arabia. **12** Female, dorsal **13** Female, lateral **14** Male, dorsal **15** Male, lateral.

cence except face, dorsum of mesosoma, and apicolateral patches of first metasomal tergum with predominantly white or pale setae (Figs 14, 15, 17); first metasomal tergum with subhorizontal dorsal surface rounding into declivitous anterior surface; gradulus of first metasomal tergum laterally curved posteriorly; male terminalia as in figures 18–22.

Comments. Maa (1970) recorded *X. sulcatipes* from Saudi Arabia, Yemen, Israel, and Transcaspia (likely northern Iran, or southwesternmost Turkmenistan), while Vicidomini (2004) gave localities in Jordan. The records of *X. fenestrata* from the United Arab Emirates (Dathe 2009) are likely *X. sulcatipes*, and this material should be dissected and compared with the images herein (Figs. 18–22) as well as those of Maa (1970). We have found that Maa's (1970) characterization of the terminalic differences holds well for observed populations and the species he recognized appear to be good (Engel pers. obs.).



Figures 16–17. Faces of *Xylocopa (Ctenoxylocopa) sulcatipes* Maa from central Saudi Arabia. **16** Female **17** Male.



Figures 18–22. Male terminalia of *Xylocopa (Ctenoxylocopa) sulcatipes* Maa from central Saudi Arabia. **18** Genital capsule, dorsal aspect **19** Genital capsule, lateral aspect **20** Genital capsule, ventral aspect **21** Seventh metasomal sternum **22** Eighth metasomal sternum.

Key to the Species of *Xylocopa* in Central Saudi Arabia

- 1 Males..... **2**
- Females..... **3**
- 2 Bee covered by dense yellow pubescence; first metasomal tergum with subhorizontal dorsal surface abruptly and angularly separated from declivitous anterior surface; gradulus of first metasomal tergum transverse, lateral extremities of gradulus not directed posteriorly; terminalia as in figures 7–11 ..
..... ***X. aestuans* (Linnaeus)**
- Bee covered by largely fuscous to black pubescence except face, dorsum of mesosoma, and apicolateral patches of first metasomal tergum with predominantly white or pale setae; first metasomal tergum with subhorizontal dorsal

- surface rounding into declivitous anterior surface; gradulus of first metasomal tergum laterally curved posteriorly; terminalia as in figures 18–22
*X. sulcatipes* Maa
- 3 Mesosomal dorsum densely covered by yellow pubescence obscuring underlying integument; face with largely white or pale pubescence; pygidial plate unarmed; posterodorsal margin of mesoscutellum projecting beyond posterior margin of metanotum; mandible bidentate at apex ... *X. aestuans* (Linnaeus)
- Mesosomal dorsum largely covered by black pubescence not obscuring underlying integument; face with largely black pubescence; pygidial plate armed on each side with subapical spine; mesoscutellum not projecting over metanotum, apical margin rounded in profile; mandible tridentate at apex
*X. sulcatipes* Maa

Biological Notes on *X. sulcatipes* at Amariah

The biology of *X. sulcatipes* has been the focus of several extensive ecological and behavioral studies, principally in Israel (e.g., Eisikowitch 1986; Gerling et al. 1983, 1989; Hefetz 1983; Kronenberg and Hefetz 1984; Stark 1989, 1992a, b; Stark et al. 1990; Surholt et al. 1990; Velthuis 1987; Velthuis and Gerling 1980; Velthuis et al. 1984; Willmer 1988). Our observations do not differ from those of the previous studies except that we have focused more on the architecture of the nests rather than the particular ecology of the species, which is already well characterized. The species is bivoltine and foraged from March through November. The area around Amariah, where our observations were made, is a typical central Saudi Arabian desert environment. Vegetation is thinly scattered and comprised mostly native plants, including several promising foraging flowers and nesting sites throughout the season. Among these, *C. procera* was found to be the most commonly used for nesting and provisioning resources. The pithy and rather straight stems of suitable diameter of *C. procera* make them ideal for nest construction (e.g., Figs 23–27). Secondarily, *P. dactylifera* was used as a nesting substrate (with five such nests collected). Detail measurements of the nests observed are provided in table 1. Given the different overall physical structure of these substrates it is not surprising that nests in *C. procera* had a single, linear nest tube extending to each side of the entrance (Figs 23–27), while those in *P. dactylifera* consisted of a more gallery-like structure, similar in this regard to the variation observed for *X. (Stenoxycopa) artifex* Smith (Silveira 2002). In all of the nests the pollen masses were compact, well kneaded, and mixed with sufficient nectar to leave them moist (Fig. 26). Where observed, individual pollen loaves were fully consumed and the larvae defecated pellet-like feces which were placed to its back or at the bottom of the cell. As observed elsewhere for this species, cells were arranged linearly, but never with cells closer than 1–1.5 times an individual cell length from the nest entrance. Also similar to observations made elsewhere on this species (e.g., Gerling et al. 1989), some nests were found



Figures 23–26. Photographs of nests of *Xylocopa* (*Ctenoxylocopa*) *sulcatipes* Maa in stems of *Calotropis procera* (Aiton) in central Saudi Arabia. **23** Nest entrance in stem of *C. procera* in the wild **24** Opened nest with series of larvae in individual cells **25** Opened nest with pupae **26** Individual pollen mass with egg situated on top.

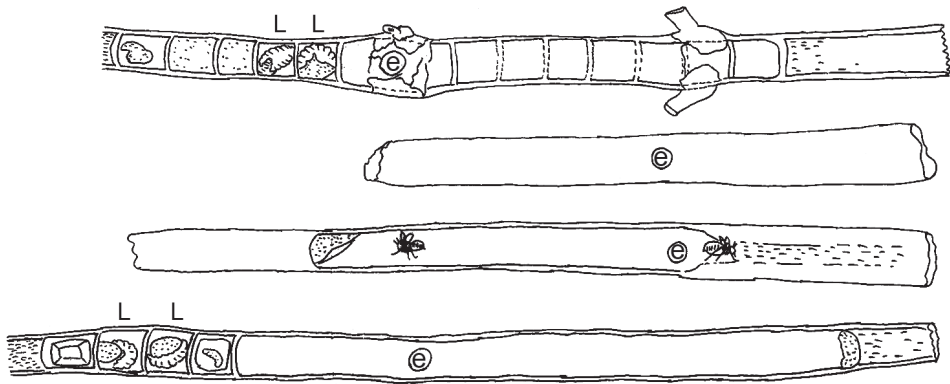


Figure 27. Diagrams of representative nests of *Xylocopa* (*Ctenoxylocopa*) *sulcatipes* Maa in stems of *Calotropis procera* (Aiton) in central Saudi Arabia. L = larva; e = nest entrance. Line illustrations by M.A. Hannan.

to comprise several newly emerged females along with an older female, all of whom participated in foraging but apparently built their own cells, although further observations are needed to clarify this point.

Although *X. sulcatipes*, like other *Xylocopa*, is polylectic, females were observed foraging mostly from *C. procera* and it was there that males were seen to approach and grab females for mating. In addition to foraging at *C. procera*, females were observed visiting *Reseda alba* L. (Resedaceae) and radish [*Raphanus sativus* L. (Brassicaceae)]. Given that species of *Xylocopa* may be useful for agricultural pollination (Keasar 2010) it may be beneficial for standing crops in central Saudi Arabia to be surrounded by suitable native vegetation including *C. procera*, thereby providing ample nesting sites to encourage the establishment of sustainable and large populations of these bees. No associated organisms were found among the nests observed.

Acknowledgements

This work was supported by King Saud University, Deanship of Scientific Research, College of Food and Agriculture Sciences Research Center. We are thankful to Naser Al-Ghpson and Hassan Balhareth who helped us during the course of this study, to Prof. Charles D. Michener for encouragement, to Dr. Ismael A. Hinojosa-Díaz for assistance with photomicrography, support for which was provided by the Engel Illustration Fund of the University of Kansas College of Liberal Arts and Sciences, and to two anonymous reviewers for their comments on the manuscript. Lastly, we are grateful to the owner and employees of the agricultural farm Mazra'ah Al-Gasim who generously permitted us to work on their property. This is a contribution of the Division of Entomology, University of Kansas Natural History Museum.

References

- Al-Ahmadi AZ, Salem MM (1999) Entomofauna of Saudi Arabia: General Survey of Insects Reported in the Kingdom of Saudi Arabia. Part I: Checklist of Insects. Academic Publishing and Press, Riyadh, Kingdom of Saudi Arabia, 240 pp.
- Binti IR (1992) Foraging and nesting behaviour of carpenter bee, *Xylocopa aestuans*. Malaysian Applied Biology 21(2): 85–91.
- Boontop Y, Malaipan S, Chareansom K (2008) Large carpenter bees in Thailand and biology of *Xylocopa nasalis* (Westwood). Thailand Natural History Museum Journal 3(1): 5–15.
- Dathe H (2009) Order Hymenoptera, superfamily Apoidea: Families Colletidae, Andrenidae, Halictidae, Melittidae, Megachilidae and Apidae. Arthropod Fauna of the UAE 2: 335–432.
- Dover C (1924) Some observations on the bionomics of *Xylocopa aestuans* Linn. (Apidae). Transactions of the Royal Entomological Society of London 72(1/2): 144–149. doi: 10.1111/j.1365-2311.1924.tb03354.x
- Eardley CD (1983) A taxonomic revision of the genus *Xylocopa* Latreille (Hymenoptera: Anthophoridae) in southern Africa. Entomology Memoir, Department of Agriculture, Republic of South Africa 58: 1–67.

- Eardley CD (1993) Complementary descriptions and new synonyms of some Afrotropical Anthophoridae (Hymenoptera). *African Entomology* 1(2): 145–150.
- Eisikowitch D (1986) Morpho-ecological aspects on the pollination of *Calotropis procera* (Asclepiadaceae) in Israel. *Plant Systematics and Evolution* 152(3–4): 185–194. doi: 10.1007/BF00989426
- El-Borollosy FN, Ismail MA (1972) Nesting habits and flight behaviour of *Xylocopa aestuans* L. (Hymenoptera: Apidae). *Bulletin de la Société Entomologique d'Égypte* 56: 399–405.
- Engel MS (2001) A monograph of the Baltic amber bees and evolution of the Apoidea (Hymenoptera). *Bulletin of the American Museum of Natural History* 259: 1–192. doi: 10.1206/0003-0090(2001)259<0001:AMOTBA>2.0.CO;2
- Engel MS (2011) Systematic melittology: Where to from here? *Systematic Entomology* 36(1): 2–15. doi: 10.1111/j.1365-3113.2010.00544.x
- Engel MS (In press) On the classification of the bee genus *Manuelia* (Hymenoptera: Apidae). *Acta Entomologica Slovenica* 20(1).
- Flores-Prado L, Flores SV, McAllister BF (2010) Phylogenetic relationships among tribes in Xylocopinae (Apidae) and implications on nest structure evolution. *Molecular Phylogenetics and Evolution* 57(1): 237–244. doi: 10.1016/j.ympev.2010.06.019
- Gerling D, Hurd PD, Jr, Hefetz A (1983) Comparative behavioral biology of two Middle East species of carpenter bees (*Xylocopa* Latreille) (Hymenoptera: Apoidea). *Smithsonian Contributions to Zoology* 369: 1–33.
- Gerling D, Velthuis HHW, Hefetz A (1989) Bionomics of the large carpenter bees of the genus *Xylocopa*. *Annual Review of Entomology* 34: 163–190. doi: 10.1146/annurev.en.34.010189.001115
- Gonzalez VH, Gonzalez MM, Cuellar Y (2009) Notas biológicas y taxonómicas sobre los abejorros del Maracuyá del género *Xylocopa* (Hymenoptera: Apidae, Xylocopini) en Colombia. *Acta Biológica Colombiana* 14(2): 31–40.
- van Harten A (2005) *The Insects of the United Arab Emirates: A Checklist of Published Records*. Dar Al Ummah, Abu Dhabi, UAE, 86 pp.
- Hefetz A (1983) Function of secretion of mandibular gland of male in territorial behaviour of *Xylocopa sulcatipes* (Hymenoptera: Anthophoridae). *Journal of Chemical Ecology* 9(7): 923–931. doi: 10.1007/BF00987815
- Hurd Jr PD (1958) Observations on the nesting habits of some New World carpenter bees with remarks on their importance in the problem of species formation. *Annals of the Entomological Society of America* 51(4): 365–375.
- Hurd Jr PD (1978) *An Annotated Catalog of the Carpenter Bees (Genus Xylocopa Latreille) of the Western Hemisphere* (Hymenoptera: Anthophoridae). Smithsonian Institution Press, Washington, DC, 106 pp.
- Hurd Jr PD, Moure JS (1960) A New World subgenus of bamboo-nesting carpenter bees belonging to the genus *Xylocopa* Latreille (Hymenoptera: Apoidea). *Annals of the Entomological Society of America* 53(6): 809–821.
- Hurd Jr PD, Moure JS (1963) A classification of the large carpenter bees (Xylocopini) (Hymenoptera: Apoidea). *University of California Publications in Entomology* 29: 1–365.

- Illiger K (1806) William Kirby's Familien der Bienenartigen Insekten mit Zusätzen, Nachweisungen und Bemerkungen. *Magazin für Insektenkunde* 5: 28–175.
- Keasar T (2010) Large carpenter bees as agricultural pollinators. *Psyche* 2010: 1–7. doi: 10.1155/2010/927463
- Kronenberg S, Hefetz A (1984) Comparative analysis of Dufour's gland secretions of two carpenter bees (Xylocopinae: Anthophoridae) with different nesting habits. *Comparative Biochemistry and Physiology, B, Comparative Biochemistry* 79(3): 421–425. doi: 10.1016/0305-0491(84)90399-7
- Le Goff G (2004) A propos de *Xylocopa (Koptortosoma) pubescens* Spinola, 1838 (= *Xylocopa aestuans* auct. nec Linne = *Xylocopa leucothorax* auct. nec De Geer): Un masque senegalais nidifie; rappel de la designation de l'espece; la "vraie" *Xylocopa aestuans* L. (Insecta - Hymenoptera - Apoidea - Apidae - Xylocopinae). *Bulletin de Phyllie* 19: 10–15.
- Leys R (2000) A revision of the Australian carpenter bees, genus *Xylocopa* Latreille, subgenera *Koptortosoma* Gribodo and *Lestis* Lepeletier & Serville (Hymenoptera: Apidae). *Invertebrate Systematics* 14(1): 115–136. doi: 10.1071/IT98014
- Leys R, Cooper SJB, Schwarz MP (2002) Molecular phylogeny and historical biogeography of the large carpenter bees, genus *Xylocopa* (Hymenoptera: Apidae). *Biological Journal of the Linnean Society* 77(2): 249–266. doi: 10.1046/j.1095-8312.2002.00108.x
- Lieftinck MA (1964) The identity of *Apis aestuans* Linné, 1758, and related Old World carpenter-bees (*Xylocopa* Latr.). *Tijdschrift voor Entomologie* 107(3): 137–158.
- Linnaeus C (1758) *Systema Naturae per regna tria natura, secundum classes, ordines, genera, species, cum characteribus, differentiis synonymis, locis* [10th Edition, revised]. Laurentii Salvii, Holmiae [Stockholm], 824 pp.
- Maa TC (1970) A revision of the subgenus *Ctenoxylocopa* (Hymenoptera: Anthophoridae). *Pacific Insects* 12(4): 723–752.
- Maeta Y, Sakagami SF, Shiokawa M (1985) Observations on a nest aggregation of the Taiwanese bamboo carpenter bee *Xylocopa (Biluna) tranquebarorum tranquebarorum* (Hymenoptera, Anthophoridae). *Journal of the Kansas Entomological Society* 58(1): 36–41.
- Maeta Y, Miyanaga R, Sugiura N (1996) Additional notes on the nesting habits of the Taiwanese bamboo carpenter bee, *Xylocopa (Biluna) tranquebarorum tranquebarorum* (Hymenoptera, Anthophoridae). *Japanese Journal of Entomology* 64: 669–680.
- Michener CD (2007) *The Bees of the World* [2nd Edition]. Johns Hopkins University Press, Baltimore, 953 pp.
- Minkley RL (1998) A cladistic analysis and classification of the subgenera and genera of the large carpenter bees, tribe Xylocopini (Hymenoptera: Apidae). *Scientific Papers, Natural History Museum, University of Kansas* 9: 1–47.
- Monod T (1977) Percement de la fleur de *Tecoma stans* (L.) par *Xylocopa aestuans* (L.) à Nouakchott (Mauritanie). *Bulletin de l'Institut Fondamental d'Afrique Noire, Série A, Sciences Naturelles* 39(1): 169–176.
- Pereira M, Garófalo CA (2010) Biologia da nidificação de *Xylocopa frontalis* e *Xylocopa grisescens* (Hymenoptera, Apidae, Xylocopini) em ninhos-armadilha. *Oecologia Australis* 14(1): 193–209. doi: 10.4257/oeco.2010.1401.11

- Prager SM, Hunter FF (2011) Relationships between nest architecture and behavior in *Xylocopa virginica* (Hymenoptera: Apidae). *Journal of Insect Behavior* 24(1): 293–306. doi: 10.1007/s10905-011-9256-x
- Punekar SA, Kumaran NKP, Bhat HR (2010) Observations on an unusual behaviour in the carpenter bee *Xylocopa aestuans* (Latreille, 1802) (Hymenoptera: Apidae) of the Western Ghats, India. *Journal of Threatened Taxa* 2(10): 1232–1233.
- Raju AJS, Rao SP (2006) Nesting habits, floral resources and foraging ecology of large carpenter bees (*Xylocopa latipes* and *Xylocopa pubescens*) in India. *Current Science* 90(9): 1210–1217.
- Sakagami SF, Laroca S (1971) Observations on the bionomics of some Neotropical xylocopine bees, with comparative and biofaunistic notes (Hymenoptera, Anthophoridae). *Journal of the Faculty of Science, Hokkaido University, Series VI, Zoology* 18(1): 57–127.
- Shalaby F (1961) A preliminary survey of the insect fauna of Saudi Arabia. *Bulletin de la Société Entomologique d'Égypte* 45: 211–228.
- Silveira FA (2002) The bamboo-nesting carpenter bee, *Xylocopa* (*Stenoxycopa*) *artifex* Smith (Hymenoptera: Apidae), also nests in fibrous branches of *Vellozia* (Velloziaceae). *Lundiana* 3(1): 57–60.
- Stark RE (1989) Beobachtungen zur Nestgründung und Brutbiologie der Holzbiene *Xylocopa sulcatipes* Maa (Apoidea: Anthophoridae). *Mitteilungen der Deutschen Gesellschaft für Allgemeine und Angewandte Entomologie* 7(1): 252–256.
- Stark RE (1992a) Cooperative nesting in the multivoltine large carpenter bee *Xylocopa sulcatipes* Maa (Apoidea: Anthophoridae): Do helpers gain or lose to solitary females? *Ethology* 91(4): 301–310.
- Stark RE (1992b) Sex ratio and maternal investment in the multivoltine large carpenter bee *Xylocopa sulcatipes* Maa (Apoidea: Anthophoridae). *Ecological Entomology* 17(2): 160–166. doi: 10.1111/j.1365-2311.1992.tb01174.x
- Stark RE, Hefetz A, Gerling D, Velthuis HHW (1990) Reproductive competition involving oophagy in the socially nesting bee *Xylocopa sulcatipes*. *Naturwissenschaften* 77(1): 38–40. doi: 10.1007/BF01131797
- Surholt B, Greive H, Baal T, Bertsch A (1990) Non-shivering thermogenesis in asynchronous flight muscles of bumblebees? Comparative studies on males of *Bombus terrestris*, *Xylocopa sulcatipes* and *Acherontia atropos*. *Comparative Biochemistry and Physiology, A, Molecular and Integrative Physiology* 97(4): 493–499.
- Velthuis HHW (1987) The evolution of sociality: Ultimate and proximate factors leading to primitive social behaviour in carpenter bees. *Experientia* 54: 405–430.
- Velthuis HHW, Gerling D (1980) Observations on territoriality and mating behaviour of the carpenter bee *Xylocopa sulcatipes*. *Entomologia Experimentalis et Applicata* 28(1): 82–91.
- Velthuis HHW, Wolf Y, Gerling D (1984) Provisioning and preparation of the brood cell in two carpenter bees, *Xylocopa sulcatipes* Maa and *Xylocopa pubescens* Spinola (Hymenoptera: Anthophoridae). *Israel Journal of Entomology* 18: 39–51. doi: 10.1111/j.1570-7458.1980.tb02990.x
- Vicidomini S (2004) Sistematica e distribuzione degli Xylocopini (Hymenoptera: Apidae: Xylocopinae): Nuove e rare segnalazioni. *Giornale Italiano di Entomologia* 11(52): 99–101.
- Willmer PG (1988) The role of insect water balance in pollination ecology: *Xylocopa* and *Calotropis*. *Oecologia* 76(3): 430–438.