

University of Massachusetts Medical School
eScholarship@UMMS

[Open Access Articles](#)

[Open Access Publications by UMMS Authors](#)

2018-06-27


Central precocious puberty in Boston boys: A 10-year single center experience

Lisa Swartz Topor
Brown University

Et al.

Let us know how access to this document benefits you.

Follow this and additional works at: <https://escholarship.umassmed.edu/oapubs>

 Part of the [Congenital, Hereditary, and Neonatal Diseases and Abnormalities Commons](#), [Endocrine System Diseases Commons](#), [Endocrinology, Diabetes, and Metabolism Commons](#), [Pediatrics Commons](#), and the [Reproductive and Urinary Physiology Commons](#)

Repository Citation

Topor LS, Bowerman K, Machan JT, Gilbert CL, Kangarloo T, Shaw ND. (2018). Central precocious puberty in Boston boys: A 10-year single center experience. Open Access Articles. <https://doi.org/10.1371/journal.pone.0199019>. Retrieved from <https://escholarship.umassmed.edu/oapubs/3520>

Creative Commons License



This work is licensed under a [Creative Commons 1.0 Public Domain Dedication](#).

This material is brought to you by eScholarship@UMMS. It has been accepted for inclusion in Open Access Articles by an authorized administrator of eScholarship@UMMS. For more information, please contact Lisa.Palmer@umassmed.edu.

RESEARCH ARTICLE

Central precocious puberty in Boston boys: A 10-year single center experience

Lisa Swartz Topor^{1,2*}, Kimberly Bowerman³, Jason T. Machan^{3,4,5}, Courtney L. Gilbert⁶, Tairmae Kangarloo⁷, Natalie D. Shaw^{7,8}

1 Department of Pediatrics, Division of Pediatric Endocrinology, Alpert Medical School of Brown University, Providence, Rhode Island, United States of America, **2** Hasbro Children's Hospital, Providence, Rhode Island, United States of America, **3** Alpert Medical School of Brown University, Providence, Rhode Island, United States of America, **4** Lifespan Biostatistics Core, Rhode Island Hospital, Providence, Rhode Island, United States of America, **5** Department of Psychology, University of Rhode Island, South Kingston, Rhode Island, United States of America, **6** University of Massachusetts Medical School, Worcester, Massachusetts, United States of America, **7** Reproductive Endocrine Unit, Massachusetts General Hospital, Boston, Massachusetts, United States of America, **8** Clinical Research Branch, National Institute of Environmental Health Sciences, National Institutes of Health, Research Triangle Park, Durham, North Carolina, United States of America

* lisa_swartz_topor@brown.edu



OPEN ACCESS

Citation: Topor LS, Bowerman K, Machan JT, Gilbert CL, Kangarloo T, Shaw ND (2018) Central precocious puberty in Boston boys: A 10-year single center experience. PLoS ONE 13(6): e0199019. <https://doi.org/10.1371/journal.pone.0199019>

Editor: David J. Handelsman, University of Sydney, AUSTRALIA

Received: March 20, 2018

Accepted: May 30, 2018

Published: June 27, 2018

Copyright: This is an open access article, free of all copyright, and may be freely reproduced, distributed, transmitted, modified, built upon, or otherwise used by anyone for any lawful purpose. The work is made available under the [Creative Commons CC0](https://creativecommons.org/licenses/by/4.0/) public domain dedication.

Data Availability Statement: All relevant data are within the paper and its Supporting Information files.

Funding: This work was conducted as part of a SHRINE Pilot Grant and was supported by Harvard Catalyst | The Harvard Clinical and Translational Science Center (National Center for Research Resources and the National Center for Advancing Translational Sciences, National Institutes of Health Award UL1 TR001102 to LST) and financial contributions from Harvard University and its

Abstract

Objective

Recent studies in the US and abroad suggest that boys are undergoing puberty at a younger age. It is unknown if this secular trend extends to boys with central precocious puberty (CPP), who sit at the extreme end of the pubertal spectrum, and if neuroimaging should remain a standard diagnostic tool.

Study design

Retrospective chart review of all boys with CPP seen by Endocrinology at a US pediatric hospital from 2001–2010.

Results

Fifty boys had pubertal onset at an average age of 7.31 years (95CI 6.83–7.89), though many did not present until nearly one year thereafter, by which time 30% were mid-to-late pubertal. Boys were predominantly non-Hispanic White and 64% were overweight/obese. The majority (64%) of boys had neurogenic CPP (CNS-CPP) with neurofibromatosis type I being the most common diagnosis. Diagnosis of CPP led to discovery of a neurogenic lesion in only 3 of 32 (9%) CNS-CPP cases. The remaining boys, with idiopathic CPP (36%), were indistinguishable from those with CNS-CPP aside from four boys who endorsed a family history of PP (22% vs. 0% among CNS-CPP cases). Importantly, there was no change in the incidence of male CPP after accounting for the increase in clinic volume during this time period.

Conclusion

In this contemporary Boston-based cohort of 50 boys with CPP, most cases were neurogenic, consistent with older literature. Several idiopathic cases had a family history of PP

affiliated academic healthcare centers and, in part, by the Intramural Research Program of the NIH, National Institute of Environmental Health Sciences (Z01-ES103315 to NS) and the Warren Alpert Medical School of Brown University Summer Assistantship (to KB). NDS is supported as a Lasker Clinical Research Scholar (1SI2ES025429-01 to NS). The content is solely the responsibility of the authors and does not necessarily represent the official views of the National Center for Research Resources, the National Center for Advancing Translational Science or the National Institutes of Health. The funders had no role in study design, data collection and analysis, decision to publish, or preparation of the manuscript.

Competing interests: The authors have declared that no competing interests exist.

Abbreviations: 95CI, 95% confidence interval; BCH, Boston Children's Hospital; BMI, body mass index; CNS-CPP, neurogenic central precocious puberty; CPP, central precocious puberty; CV, coefficient of variation; DHEAS, dehydroepiandrosterone sulfate; FSH, follicle stimulating hormone; HPLC, high performance liquid chromatography; ICD-9, International Statistical Classification of Diseases 9th edition; iCPP, idiopathic central precocious puberty; LOD, limit of detection; LOQ, limit of quantification; LH, luteinizing hormone; NF-1, Neurofibromatosis type 1; NHW, non-Hispanic White; PP, precocious puberty; QCS, quality control sera; SD, standard deviation; TT, total testosterone.

but were otherwise indistinguishable from CNS-CPP cases. Thus, neuroimaging remains a critical diagnostic tool. We find no evidence for an increase in the prevalence of male CPP.

Introduction

The first sign of male puberty is an increase in testicular volume (>3 ml) which signals the re-activation of the neuroendocrine components of the reproductive axis. While pubertal onset in boys has historically occurred at an average age of 11.6 ± 0.09 years [1], recent large-scale observational studies in the US [2], Europe [3], and Asia [4] suggest that puberty may now be occurring earlier in boys, akin to the pattern observed in contemporary girls. In girls, the obesity epidemic and endocrine disrupting chemicals are thought to be the main drivers of early puberty (reviewed in [5, 6]), yet perplexingly, these same environmental factors have often been associated with delayed rather than earlier puberty in boys [7–11], suggesting there may be different biological mechanisms underlying changes in the timing and tempo of male puberty.

The diagnosis of precocious puberty (PP) in males, as in females, is based entirely on a statistical definition equal to pubertal onset at an age that is two or more standard deviations below the mean, or puberty before age 9 years in boys. The majority of cases of PP reflect premature activation of the neural components of the male reproductive axis (central PP, CPP), which leads to an increase in gonadotropins, testicular volume, and testosterone production, as opposed to a peripheral or exogenous stimulus or source of androgens (peripheral PP). CPP in a boy is frequently caused by a pathological brain lesion, whereas CPP in girls is most often idiopathic. Clinical guidelines for the evaluation of male CPP, which include neuroimaging to rule-out intracranial malignancy, are strongly tied to this age-based, statistical criterion.

There has been very little investigation into whether there has been a rise in the incidence of male CPP over the past decade [4, 12–14] and no studies have been conducted in US boys. If there has been a population-level shift in the timing of male puberty, one would expect more boys to meet CPP criteria, more referrals for endocrine evaluation, and potentially more (but unnecessary) testing and neuroimaging. To begin to fill this knowledge gap, we determined the incidence and underlying etiology of male CPP over a 10-year period at a leading US pediatric tertiary care center.

Materials and methods

We conducted a retrospective chart review of all male patients seen in the Pediatric Endocrinology Division at Boston Children's Hospital (BCH) between 2001–2010 with an International Statistical Classification of Diseases 9th edition (ICD-9) code for PP (ICD-9 259.1). Note that because different billable medical codes were typically used for related diagnoses including familial male-limited PP (e.g. billed as testicular hyperfunction), androgen-secreting tumors (e.g., billed as neuroendocrine tumor), and congenital adrenal hyperplasia (e.g., billed as adrenogenital disorder), such patients are absent from the current study by design. Complete medical records were reviewed by trained study staff using a standardized abstraction form to confirm the diagnosis of CPP or to assign an alternative diagnosis (e.g. premature adrenarche, early-normal puberty, pubic hair of infancy). CPP was defined as a testicular volume > 3 mL, and/or a baseline luteinizing hormone (LH) ≥ 0.3 IU/L, and/or LH > 5 IU/L after leuprolide stimulation (10 μ g/kg administered subcutaneously) in a boy younger than 9 years old [15].

CPP cases were sub-categorized as either neurogenic (CNS-CPP), which encompassed cases related to a brain injury, brain tumor, hydrocephalus, or a known syndrome, or as idiopathic CPP (iCPP). Medical, family, and social history, physical exam findings, and laboratory and imaging results were recorded. Bone age was assigned by a pediatric endocrinologist using the method of Greulich and Pyle [16]. A patient was said to have a family history of early puberty if his mother reported menarche before age 10 years or if his father reported an early growth spurt relative to peers. All data collection forms were reviewed by at least one pediatric endocrinologist (L.S.T and N.D.S). Both endocrinologists reviewed a subset of forms ($n = 10$) and demonstrated 100% inter-rater reliability in the selected diagnosis.

To discern whether any observed change in the incidence of male CPP between 2001 and 2010 might represent a true change in disease incidence or reflect an increase in total referrals to BCH, we also used the Informatics for Integrating Biology and the Bedside (i2b2) [17] computational tool to query the BCH electronic medical record and determine the number of male patients seen per year in the BCH Endocrinology clinics.

Reproductive hormone assays were performed in the BCH Department of Laboratory Medicine. Serum LH and FSH were measured using a chemiluminescence immunoassay manufactured by Bayer Diagnostics (now Siemens, Tarrytown, NY) from 2001–2003 and by Roche Diagnostics (Indianapolis, IN) thereafter. These two assays are highly correlated with minimal bias and differ only in their limit of detection [LOD] (Bayer 0.2 IU/L, Roche 0.1 IU/L). The limits of quantification (LOQ) for LH and FSH are the same as the LOD for these assays. For LH, the inter-assay coefficient of variation (CV) is 3.2% for quality control sera (QCS) containing 1.8 IU/L, and for FSH, the CV is 2.1% for QCS containing 6.8 IU/L. Total testosterone (TT) was measured using one of two in-house assays which were cross-validated: high-performance liquid chromatographic (HPLC) steroid separation followed by immunoassay (2001–2006; LOD 12.5 ng/dL) or an LC-mass spectroscopy assay (2006–2010; LOD 10 ng/dL) which currently has an inter-assay CV of 8.2% for QCS containing 53 pg/mL. Testosterone assays were interconverted according to the formula $y = 0.665x + 5.19$. Dehydroepiandrosterone sulfate (DHEAS) was measured with an electrochemiluminescent immunoassay. Genetic testing for CPP was not routinely performed in the clinic during this time period.

This protocol was approved by the BCH Institutional Review Board. The requirement for informed consent was waived due to the retrospective nature of the study.

Statistical analyses

All analyses were conducted using SAS Software 9.4 (SAS Inc., Cary, NC). Baseline characteristics were summarized with means with 95% confidence intervals for continuous variables and frequencies and percentages for categorical variables.

Demographics, history, laboratory studies, and physical exam findings in boys with iCPP and CNS-CPP were compared using generalized linear models. Tanner stages were modeled as binomial proportions. Hormone levels were compared using a generalized Tobit model, which is suitable for censored data, when values fell below the assay LOD. Classical sandwich estimation was used to adjust for any model misspecification. A generalized linear model for binomial data was used to test for a temporal change in the number of male CPP or premature pubarche cases before and after adjusting for the number of male clinic patients. Statistical significance was established at the 0.05 level and all interval estimates were calculated for 95% confidence.

Results

From 2001–2010, 1005 boys were evaluated in the BCH Department of Pediatric Endocrinology and assigned a diagnostic code for PP. Careful review of the medical records revealed that only

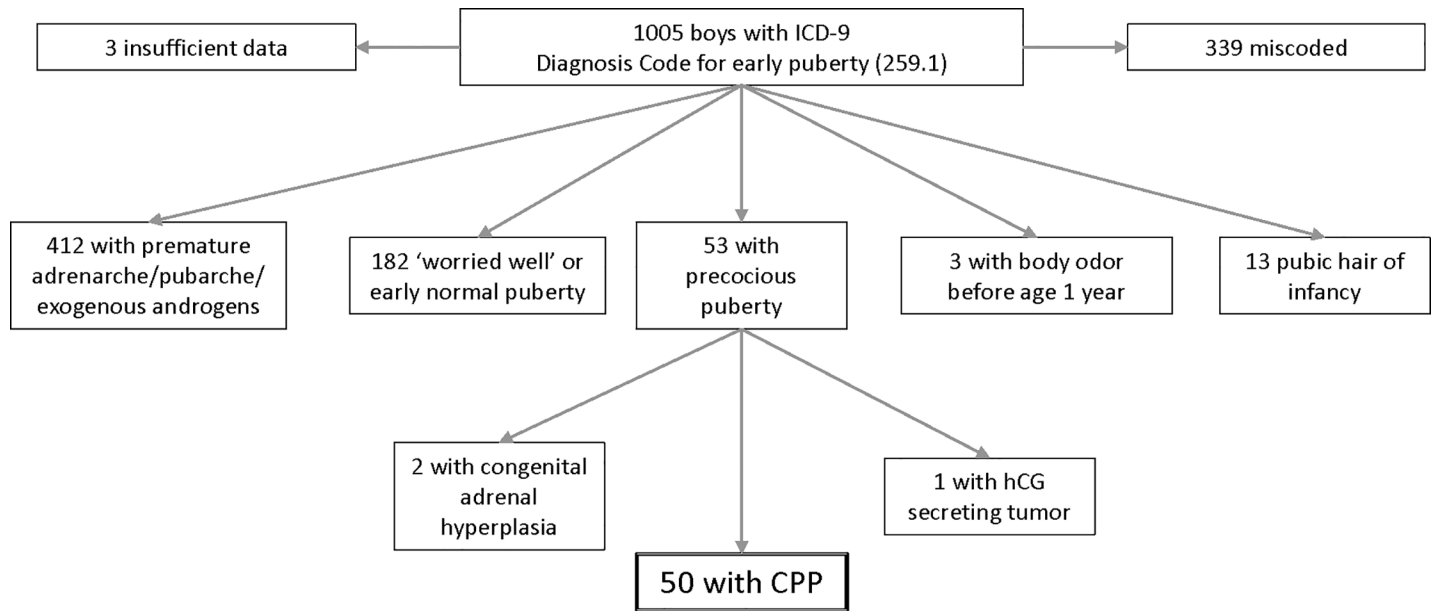


Fig 1. Inclusion flow diagram of the male CPP cohort.

<https://doi.org/10.1371/journal.pone.0199019.g001>

53 met formal criteria for PP, whereas the majority of patients with a pubertal diagnosis had either premature pubarche or “early normal” puberty and a small minority were infants with isolated body odor or pubic hair (Fig 1). All patients with PP had CPP with the exception of three patients who were excluded from further analyses: one patient with a hypothalamic human chorionic gonadotropin-secreting germ cell tumor, and two patients with CPP triggered by peripheral PP (congenital adrenal hyperplasia), resulting in a final CPP cohort of 50 boys.

The boys with CPP were predominantly non-Hispanic White [NHW] (66% NHW, 10% Hispanic, 8% African-American, 4% Asian, 12% Mixed/Other/Unknown), representative of the demographics of the BCH catchment area. None of the boys were international adoptees. Patients came to clinical attention at an average age of 8.13 years (95CI 7.65–8.60) (Table 1). By parental report, pubertal signs first appeared at an average age of 7.31 years (95CI 6.83–7.79), however, it is quite possible that puberty occurred even earlier as parents frequently underestimate the onset of puberty in their sons [18]. Thirty percent of patients (n = 15) were already mid-to-late pubertal (defined as testicular volume ≥ 8 mL) at presentation. The majority (64%) were overweight or obese at the time of initial endocrine evaluation, and this figure dropped to 48% when bone age, rather than chronologic age, was used to determine BMI percentile [19].

Nearly 2/3 of boys with CPP had CNS-CPP secondary to a tumor, neuroanatomic abnormality, or genetic syndrome (Table 2). The remaining 18 boys, classified as iCPP, were without syndromic traits and either had no intracranial lesion on brain imaging (n = 15) or prolonged follow-up without neurological symptoms (n = 2, 4 and 10 years follow-up), and one boy declined brain MRI after CPP diagnosis and was lost to endocrine follow-up. CNS-CPP and iCPP cases did not differ in anthropometrics, including the percentage of overweight/obesity (43% vs. 56% using bone age, p = 0.5).

Neurofibromatosis type 1 (NF-1) in association with an optic or hypothalamic glioma was the most common cause of CNS-CPP. This may reflect the large referral base of the BCH Multidisciplinary Neurofibromatosis Program as similar studies conducted at major university hospitals have also reported a high prevalence of NF-1 and optic gliomas among boys with

Table 1. Baseline characteristics of the cohort.

Clinical Measure	iCPP		CNS-CPP		p-value
	n	Mean (95% CI)	n	Mean (95% CI)	
Age at Pubertal Symptom Onset, Years	18	7.56 (7.07, 8.04)	31	7.17 (6.47, 7.86)	0.36
Age at CPP Diagnosis, Years	18	8.73 (8.30, 9.15)	32	7.79 (7.11, 8.46)	0.02
Height Z-Score	18	1.2 (0.51, 1.90)	29	0.65 (0.07, 1.23)	0.22
Weight Z-score	18	1.65 (1.06, 2.24)	29	1.05 (0.49, 1.61)	0.14
BMI Z-score	18	1.54 (1.19, 1.88)	27	1.25 (0.85, 1.66)	0.29
Pubic hair, Tanner stage	17	T1 11.76%, T2 35.39%, T3 47.06%, T4 5.88%, T5 0%	30	T1 43.33%, T2 26.67%, T3 23.33%, T4 3.33%, T5 3.33%	0.075
Pubic hair present, %	17	88.24 (62.22, 97.16)	30	56.7 (38.37, 73.31)	0.043
Axillary hair present, %	17	41.18 (21.0, 65.0)	25	4.0 (0.5, 25.0)	0.017
Body odor present, %	17	76.5 (50.5, 91.1)	23	43.5 (24.7, 64.3)	0.049
Bone Age—Chronological Age, Years	17	2.61 (1.71, 3.51)	29	1.78 (1.14, 2.40)	0.13
Family History Precocious Puberty, % [#]	17	23.5 (8.8, 49.6)	18	0	—

[#] Female relative with menarche at or before age 9 years or early puberty reported in a male relative

<https://doi.org/10.1371/journal.pone.0199019.t001>

CNS-CPP [20–22]. The remaining CNS-CPP patients had other brain tumors, brain injury (e.g. congenital hydrocephalus, hypoxic ischemic injury), or a genetic syndrome associated with CPP. In 3 boys (aged 9 months, 7.5 years, and 8.3 years), CPP occurred in an otherwise healthy, asymptomatic patient, thereby prompting neuro-imaging and unmasking neuropathology (S1 Fig). These boys were diagnosed with either a hypothalamic or optic pathway tumor and had no distinguishing clinical or laboratory findings.

There were several notable overall differences between boys with CNS-CPP and iCPP. While boys in both groups demonstrated the first signs of puberty at the same age, CNS-CPP patients were diagnosed at a younger age (Table 1). Of note, 50% of CNS-CPP boys and 50% of iCPP boys had pubertal onset in the “borderline” age range (8–9 years). Boys with iCPP were more likely to have adult type body odor, axillary hair, and pubic hair, yet there were no group differences in DHEAS levels (iCPP 3.1 μmol/L, 95CI 1.9–5.3 vs. CNS-CPP 1.9 μmol/L, 95CI 1.2–3.0, p = 0.16). CNS-CPP patients, despite being younger, showed a tendency toward higher baseline LH levels (p = 0.08), higher TT levels (p = 0.21), and larger testicular volumes (p = 0.41) (Fig 2). A family history of early puberty was present in nearly one-quarter of iCPP cases but was absent in all CNS-CPP boys. While several paternally imprinted genes have recently been implicated in hereditary and sporadic forms of CPP (e.g. *DLK1*, *MKRN3*) [23–

Table 2. Underlying etiology of CNS-CPP in 32 boys.

Causes of CNS-CPP (n = 32)	n
Neurofibromatosis type 1	10
Optic glioma	4
Hypothalamic hamartoma	3
Other CNS tumor	3
Genetic syndrome*	4
Brain injury	8

*Genetic disorders: Costello Syndrome, Encephalocraniocutaneous lipomatosis, Mucopolysaccharidosis type III [Sanfilippo Syndrome], Wolf-Hirschhorn Syndrome

<https://doi.org/10.1371/journal.pone.0199019.t002>

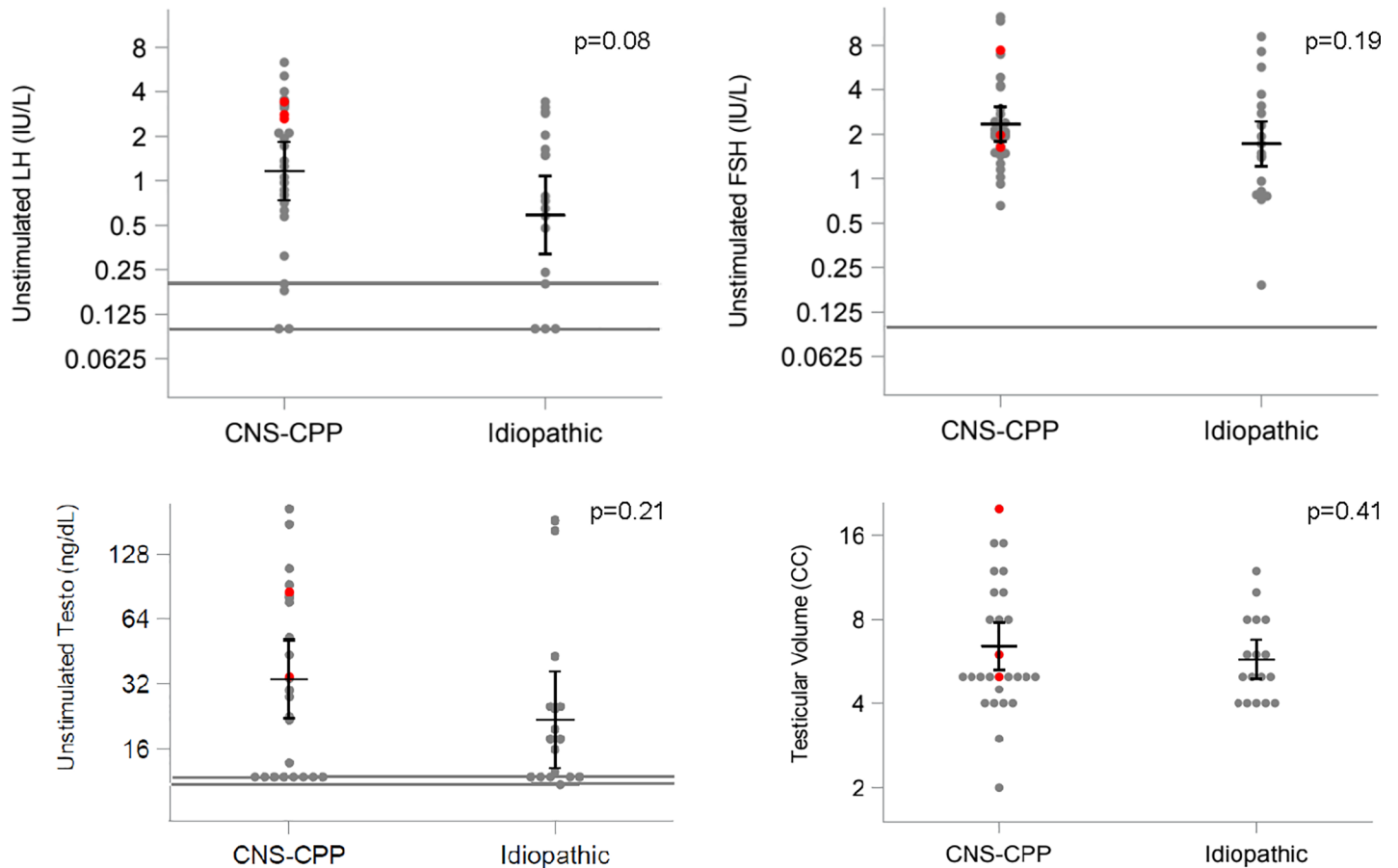


Fig 2. Baseline LH, FSH, and total testosterone (Testo) levels and testicular volume in CNS-CPP and iCPP cases. Means and 95CI overlay raw data points. Red dots represent measures from the 3 patients in whom the diagnosis of CPP unmasked a brain neoplasm. Gray lines represent assay lower limits of detection. P-values reflect group comparisons using generalized linear models. To convert to SI units, multiple Testo by 0.0347.

<https://doi.org/10.1371/journal.pone.0199019.g002>

25] in 3 out of the 4 familial CPP cases in the current cohort, it was the mother who reported a history of early menarche, suggesting maternal transmission.

There was a slight increase in the number of new CPP cases per year from 2001–2010 (7% per year, 95CI 0–13%, $p = 0.03$). However, over this same timeframe there was a comparable increase in the number of new cases of premature pubarche (8% per year, 95 CI 5–12%, $p < 0.001$; CPP vs. premature pubarche, $p = 0.6$), a condition not believed to have a neuroendocrine trigger, suggesting there may be an unmeasured confounder. Indeed, there was no change in the number of CPP cases after accounting for the concurrent increase in the number of male patients seen in the Pediatric Endocrine clinic from 2001–2010 (Fig 3).

Discussion

The current study offers a unique window into the male CPP patient population at a major US academic medical center from 2001–2010. Consistent with traditional teaching, the majority of CPP cases in boys were due to neoplastic or neuroanatomic lesions, and boys with CNS-CPP were diagnosed at a younger age than those with an idiopathic cause [12, 26]. An earlier diagnosis in CNS-CPP boys may have been related to closer medical surveillance, as nearly 80% had a known CNS lesion, leading many of the boys to be referred to the Endocrine Clinic for monitoring of hypothalamic-pituitary function prior to the time of CPP diagnosis.

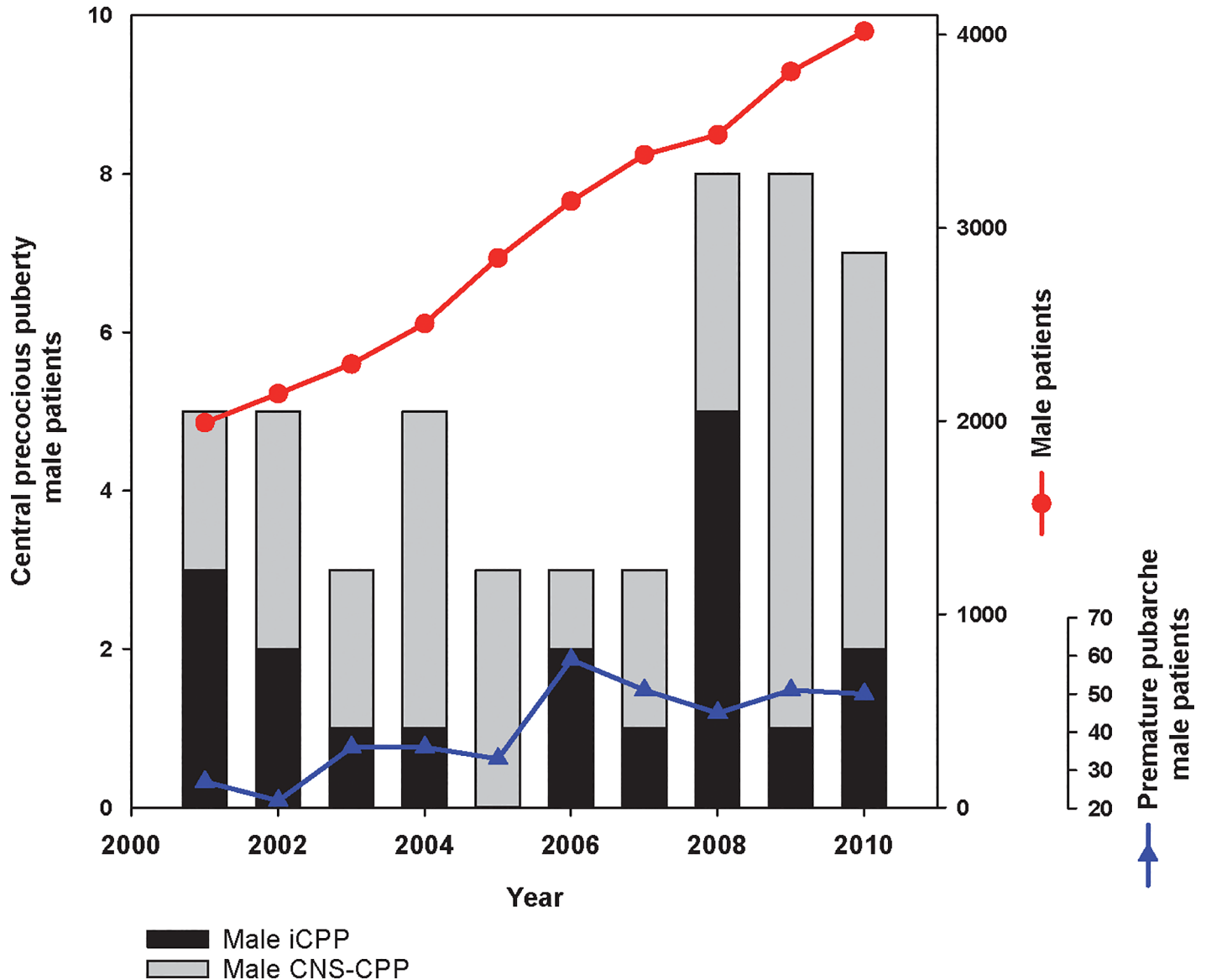


Fig 3. Number of male patients with CPP, male patients with premature pubarche, and male patients (all diagnoses) seen per annum by BCH Endocrinology. Note different y-axes scales.

<https://doi.org/10.1371/journal.pone.0199019.g003>

Conversely, iCPP boys with a family history of PP may have come to clinical attention later because of parental misconceptions about normal pubertal timing. Importantly, we observed only a minor increase in the number of CPP diagnoses per year which closely mirrored the increase in both premature pubarche and total endocrine referrals. This suggests there was no change in the true incidence of male CPP but rather an increase in overall patient volume.

These results are largely consistent with several recent studies on secular trends in male CPP. A Turkish university hospital study (n = 101 cases) found that CNS-CPP patients were younger at diagnosis than idiopathic cases but were more reproductively mature, as indicated by higher basal TT levels and stimulated LH levels [12]. They reported a slight increase in male idiopathic (but not organic) CPP cases from 2003 to 2009, which was followed by a 5-year plateau, but did not control for changes in overall clinic volume, a critical potential confounder.

A Spanish epidemiologic study of CPP reported a small increase in male CPP cases from 1997 to 2009 which coincided with a large demographic shift related to increased immigration and international adoption, two well-recognized risk factors for CPP [27]. A population-level study in South Korea using national registry data also demonstrated a small increase in the incidence of male CPP cases during this timeframe, but the increase was limited to boys ages 8 to 9 years [4]. Lastly, an earlier (1993–2001) Danish registry-based study reported no change in the incidence of PP in boys [28]. Taken together with the current findings, these studies do not provide strong evidence for a change in the incidence of male CPP since the early 2000s.

We had predicted that a population-level shift in the timing of male puberty would lead to more diagnoses of male CPP in the borderline (8–9-year) age range. While 50% of iCPP boys displayed signs of puberty between ages 8 and 9 years, the same was true for boys with CPP triggered by true neuropathology, suggesting that this figure does not reflect a secular change. We also found no difference in the prevalence of overweight/obesity among iCPP and CNS-CPP boys suggesting that obesity was not a primary driver of PP in iCPP boys in this cohort.

While this study has several limitations, including those inherent to a retrospective chart review, we were careful to follow best practice guidelines for medical record review, as previously described [29], to minimize errors and potential biases. This study included a relatively small and homogeneous patient population (non-Hispanic White boys) at a major academic medical center which may limit generalizability to other large university hospital settings. We also used overall clinic volume as a proxy for the hospital catchment population, recognizably the preferred denominator in calculations of incidence rate. In contrast to previous epidemiologic studies where concern has been raised about misclassification bias in male genital Tanner staging [30], we have confidence in the diagnoses of male PP in the current study, as in every case the diagnosis was made by a pediatric endocrinologist skilled in Tanner staging and in the precise measurement of testicular volume using orchidometry. We had limited access to height and weight measurements pre-CPP diagnosis precluding an assessment of the temporal relationship between overweight/obesity and CPP in these boys. Furthermore, as overweight/obesity was defined by BMI, it remains possible that the higher BMIs observed among boys in the current study were inflated by the increase in fat-free (muscle) mass that is known to occur during male pubertal development [31] and do not represent true obesity.

The current study demonstrates the power of a detailed family history in informing the diagnostic workup of male CPP patients. While iCPP and CNS-CPP were indistinguishable on all standard clinical and laboratory measures, the presence of a family history of CPP was a strong predictor of an idiopathic cause. There is currently insufficient evidence to support a change in current guidelines which recommend neuroimaging of all male CPP patients (< 9 years old). As we gain further insight into the genetic architecture of male CPP, which currently includes genes in pathways implicated in delayed puberty and/or congenital GnRH deficiency (e.g., *KISS1*, *KISS1R*, *PROKR2*) as well as novel genes (e.g., *MKRN3*, *DLK1*) [23, 24, 32–35], genetic testing may supersede neuroimaging in standard diagnostic algorithms.

In conclusion, comprehensive medical record review of 50 male CPP patients followed at a leading pediatric medical center from 2001–2010 reveals no demonstrable changes in the epidemiology of this disorder. CPP remains a rare diagnosis, and though a neurogenic cause should be suspected and investigated, the majority of boys with CNS-CPP had known neurologic disease prior to CPP.

Supporting information

S1 Fig. Temporal relationship between the diagnoses of a brain neoplasm and CPP in 15 patients. Squares indicate diagnosis of a brain neoplasm and triangles indicate CPP diagnosis. White squares indicate CPP diagnosed after the brain neoplasm, while gray squares indicate CPP diagnosis prior to neoplasm diagnosis.

(TIF)

Author Contributions

Conceptualization: Lisa Swartz Topor, Courtney L. Gilbert.

Data curation: Kimberly Bowerman, Courtney L. Gilbert, Tairmae Kangarloo, Natalie D. Shaw.

Formal analysis: Jason T. Machan.

Funding acquisition: Lisa Swartz Topor, Kimberly Bowerman.

Investigation: Lisa Swartz Topor, Natalie D. Shaw.

Methodology: Lisa Swartz Topor, Jason T. Machan, Natalie D. Shaw.

Project administration: Tairmae Kangarloo.

Supervision: Lisa Swartz Topor, Natalie D. Shaw.

Writing – original draft: Lisa Swartz Topor, Kimberly Bowerman, Natalie D. Shaw.

Writing – review & editing: Lisa Swartz Topor, Jason T. Machan, Courtney L. Gilbert, Tairmae Kangarloo, Natalie D. Shaw.

References

1. Marshall WA, Tanner JM. Variations in the pattern of pubertal changes in boys. *ArchDisChild*. 1970; 45(239):13–23.
2. Herman-Giddens ME, Steffes J, Harris D, Slora E, Hussey M, Dowshen SA, et al. Secondary sexual characteristics in boys: data from the Pediatric Research in Office Settings Network. *Pediatrics*. 2012; 130(5):e1058–68. <https://doi.org/10.1542/peds.2011-3291> PMID: 23085608.
3. Sorensen K, Aksglaede L, Petersen JH, Juul A. Recent changes in pubertal timing in healthy Danish boys: associations with body mass index. *J Clin Endocrinol Metab*. 2010; 95(1):263–70. <https://doi.org/10.1210/jc.2009-1478> PMID: 19926714.
4. Kim SH, Huh K, Won S, Lee KW, Park MJ. A Significant Increase in the Incidence of Central Precocious Puberty among Korean Girls from 2004 to 2010. *PLoS One*. 2015; 10(11):e0141844. <https://doi.org/10.1371/journal.pone.0141844> PMID: 26539988; PubMed Central PMCID: PMC4634943.
5. Buck Louis GM, Gray LE Jr., Marcus M, Ojeda SR, Pescovitz OH, Witchel SF, et al. Environmental factors and puberty timing: expert panel research needs. *Pediatrics*. 2008; 121 Suppl 3:S192–207. <https://doi.org/10.1542/peds.1813E> PMID: 18245512.
6. Kaplowitz PB, Slora EJ, Wasserman RC, Pedlow SE, Herman-Giddens ME. Earlier onset of puberty in girls: relation to increased body mass index and race. *Pediatrics*. 2001; 108(2):347–53. PMID: 11483799
7. Crocker MK, Stern EA, Sedaka NM, Shomaker LB, Brady SM, Ali AH, et al. Sexual dimorphisms in the associations of BMI and body fat with indices of pubertal development in girls and boys. *J Clin Endocrinol Metab*. 2014; 99(8):E1519–29. <https://doi.org/10.1210/jc.2014-1384> PMID: 24780051; PubMed Central PMCID: PMC4121027.
8. Kaplowitz P. Delayed puberty in obese boys: comparison with constitutional delayed puberty and response to testosterone therapy. *J Pediatr*. 1998; 133(6):745–9. PMID: 9842037.
9. Lee JM, Kaciroti N, Appugliese D, Corwyn RF, Bradley RH, Lumeng JC. Body mass index and timing of pubertal initiation in boys. *Arch Pediatr Adolesc Med*. 2010; 164(2):139–44. <https://doi.org/10.1001/archpediatrics.2009.258> PMID: 20124142; PubMed Central PMCID: PMC4172573.

10. Lee JM, Wasserman R, Kaciroti N, Gebremariam A, Steffes J, Dowshen S, et al. Timing of Puberty in Overweight Versus Obese Boys. *Pediatrics*. 2016; 137(2):e20150164. <https://doi.org/10.1542/peds.2015-0164> PMID: 26817933.
11. Wang Y. Is obesity associated with early sexual maturation? A comparison of the association in American boys versus girls. *Pediatrics*. 2002; 110(5):903–10. PMID: 12415028.
12. Alikasifoglu A, Vurali D, Gonc EN, Ozon A, Kandemir N. Changing Etiological Trends in Male Precocious Puberty: Evaluation of 100 Cases with Central Precocious Puberty over the Last Decade. *Horm Res Paediatr*. 2015; 83(5):340–4. <https://doi.org/10.1159/000377678> PMID: 25791832.
13. Chen C, Zhang Y, Sun W, Chen Y, Jiang Y, Song Y, et al. Investigating the relationship between precocious puberty and obesity: a cross-sectional study in Shanghai, China. *BMJ open*. 2017; 7(4):e014004. <https://doi.org/10.1136/bmjopen-2016-014004> PMID: 28400459; PubMed Central PMCID: PMC5566589.
14. Osman HA, Al-Jurayyan NAM, Babiker AMI, Al-Otaibi HMN, AlKhalifah RDH, Al Issa SDA, et al. Precocious puberty: An experience from a major teaching hospital in Central Saudi Arabia. *Sudan J Paediatr*. 2017; 17(1):19–24. PMID: 29213166; PubMed Central PMCID: PMC5621853.
15. Carel JC, Leger J. Clinical practice. Precocious puberty. *N Engl J Med*. 2008; 358(22):2366–77.
16. Greulich WW, Pyle SI. Radiographic atlas of skeletal development of the hand and wrist. 2d ed. Stanford, Calif.: Stanford Univ. Press; 1959. xvi, 256 p. p.
17. Murphy SN, Mendis ME, Berkowitz DA, Kohane I, Chueh HC. Integration of clinical and genetic data in the i2b2 architecture. *AMIA Annu Symp Proc*. 2006:1040. PMID: 17238659; PubMed Central PMCID: PMC51839291.
18. Rasmussen AR, Wohlfahrt-Veje C, Tefre de Renzy-Martin K, Hagen CP, Tinggaard J, Mouritsen A, et al. Validity of self-assessment of pubertal maturation. *Pediatrics*. 2015; 135(1):86–93. <https://doi.org/10.1542/peds.2014-0793> PMID: 25535262.
19. Clinical Growth Charts. Centers for Disease Control and Prevention. http://www.cdc.gov/growthcharts/clinical_charts.htm. 2012.
20. Choi KH, Chung SJ, Kang MJ, Yoon JY, Lee JE, Lee YA, et al. Boys with precocious or early puberty: incidence of pathological brain magnetic resonance imaging findings and factors related to newly developed brain lesions. *Ann Pediatr Endocrinol Metab*. 2013; 18(4):183–90. <https://doi.org/10.6065/apem.2013.18.4.183> PMID: 24904875; PubMed Central PMCID: PMC4027080.
21. De Sanctis V, Corrias A, Rizzo V, Bertelloni S, Urso L, Galluzzi F, et al. Etiology of central precocious puberty in males: the results of the Italian Study Group for Physiopathology of Puberty. *Journal of pediatric endocrinology & metabolism: JPEM*. 2000; 13 Suppl 1:687–93. PMID: 10969910.
22. Faizah M, Zuhani A, Rahmah R, Raja A, Wu L, Dayang A, et al. Precocious puberty in children: A review of imaging findings. *Biomed Imaging Interv J*. 2012; 8(1):e6. <https://doi.org/10.2349/bij.8.1.e6> PMID: 22970062; PubMed Central PMCID: PMC3432225.
23. Abreu AP, Dauber A, Macedo DB, Noel SD, Brito VN, Gill JC, et al. Central precocious puberty caused by mutations in the imprinted gene MKRN3. *N Engl J Med*. 2013; 368(26):2467–75. <https://doi.org/10.1056/NEJMoa1302160> PMID: 23738509; PubMed Central PMCID: PMC3808195.
24. Dauber A, Cunha-Silva M, Macedo DB, Brito VN, Abreu AP, Roberts SA, et al. Paternally Inherited DLK1 Deletion Associated With Familial Central Precocious Puberty. *J Clin Endocrinol Metab*. 2017; 102(5):1557–67. <https://doi.org/10.1210/jc.2016-3677> PMID: 28324015; PubMed Central PMCID: PMC5443333.
25. Perry JR, Day F, Elks CE, Sulem P, Thompson DJ, Ferreira T, et al. Parent-of-origin-specific allelic associations among 106 genomic loci for age at menarche. *Nature*. 2014; 514(7520):92–7. <https://doi.org/10.1038/nature13545> PMID: 25231870; PubMed Central PMCID: PMC4185210.
26. Chemaitilly W, Trivin C, Adan L, Gall V, Sainte-Rose C, Brauner R. Central precocious puberty: clinical and laboratory features. *Clin Endocrinol (Oxf)*. 2001; 54(3):289–94. PMID: 11298079.
27. Soriano-Guillen L, Corripio R, Labarta JI, Canete R, Castro-Feijoo L, Espino R, et al. Central precocious puberty in children living in Spain: incidence, prevalence, and influence of adoption and immigration. *J Clin Endocrinol Metab*. 2010; 95(9):4305–13. <https://doi.org/10.1210/jc.2010-1025> PMID: 20554707.
28. Teilmann G, Pedersen CB, Jensen TK, Skakkebaek NE, Juul A. Prevalence and incidence of precocious pubertal development in Denmark: an epidemiologic study based on national registries. *Pediatrics*. 2005; 116(6):1323–8. <https://doi.org/10.1542/peds.2005-0012> PMID: 16322154
29. Gilbert EH, Lowenstein SR, Koziol-McLain J, Barta DC, Steiner J. Chart reviews in emergency medicine research: Where are the methods? *Ann Emerg Med*. 1996; 27(3):305–8. PMID: 8599488.
30. Kaplowitz PB. Link between body fat and the timing of puberty. *Pediatrics*. 2008; 121 Suppl 3:S208–17. <https://doi.org/10.1542/peds.2007-1813F> PMID: 18245513.

31. Demerath EW, Schubert CM, Maynard LM, Sun SS, Chumlea WC, Pickoff A, et al. Do changes in body mass index percentile reflect changes in body composition in children? Data from the Fels Longitudinal Study. *Pediatrics*. 2006; 117(3):e487–95. <https://doi.org/10.1542/peds.2005-0572> PMID: 16510627.
32. Fukami M, Suzuki E, Izumi Y, Torii T, Narumi S, Igarashi M, et al. Paradoxical gain-of-function mutant of the G-protein-coupled receptor PROKR2 promotes early puberty. *J Cell Mol Med*. 2017; 21(10):2623–6. <https://doi.org/10.1111/jcmm.13146> PMID: 28338294; PubMed Central PMCID: PMC5618689.
33. Shin YL. An update on the genetic causes of central precocious puberty. *Ann Pediatr Endocrinol Metab*. 2016; 21(2):66–9. <https://doi.org/10.6065/apem.2016.21.2.66> PMID: 27462581; PubMed Central PMCID: PMC4960016.
34. Silveira LG, Noel SD, Silveira-Neto AP, Abreu AP, Brito VN, Santos MG, et al. Mutations of the KISS1 gene in disorders of puberty. *J Clin Endocrinol Metab*. 2010; 95(5):2276–80. <https://doi.org/10.1210/jc.2009-2421> PMID: 20237166; PubMed Central PMCID: PMC2869552.
35. Teles MG, Bianco SD, Brito VN, Trarbach EB, Kuohung W, Xu S, et al. A GPR54-activating mutation in a patient with central precocious puberty. *N Engl J Med*. 2008; 358(7):709–15. <https://doi.org/10.1056/NEJMoa073443> PMID: 18272894