

2018-02-05


## The TRIM-NHL protein NHL-2 is a Novel Co-Factor of the CSR-1 and HRDE-1 22G-RNA Pathways

Peter R. Boag  
*Monash University*

*Et al.*

Let us know how access to this document benefits you.

Follow this and additional works at: [https://escholarship.umassmed.edu/faculty\\_pubs](https://escholarship.umassmed.edu/faculty_pubs)

 Part of the Amino Acids, Peptides, and Proteins Commons, Biochemistry Commons, Genetic Phenomena Commons, Genetics Commons, Molecular Biology Commons, and the Nucleic Acids, Nucleotides, and Nucleosides Commons

---

### Repository Citation

Boag PR, Davis GM, Tu S, Colson RN, Anderson JW, Gunzburg MJ, Francisco MA, Ray D, Maity T, Wu MZ, Morris QD, Hughes TR, Wilce JA, University of Toronto, Weng Z. (2018). The TRIM-NHL protein NHL-2 is a Novel Co-Factor of the CSR-1 and HRDE-1 22G-RNA Pathways. University of Massachusetts Medical School Faculty Publications. <https://doi.org/10.1101/260240>. Retrieved from [https://escholarship.umassmed.edu/faculty\\_pubs/1543](https://escholarship.umassmed.edu/faculty_pubs/1543)

Creative Commons License



This work is licensed under a [Creative Commons Attribution 4.0 License](https://creativecommons.org/licenses/by/4.0/).

This material is brought to you by eScholarship@UMMS. It has been accepted for inclusion in University of Massachusetts Medical School Faculty Publications by an authorized administrator of eScholarship@UMMS. For more information, please contact [Lisa.Palmer@umassmed.edu](mailto:Lisa.Palmer@umassmed.edu).

1 **The TRIM-NHL protein NHL-2 is a Novel Co-Factor of the CSR-1 and HRDE-1 22G-RNA**  
2 **Pathways**

3  
4 Gregory M. Davis<sup>1,\*</sup>, Shikui Tu<sup>2,\*</sup>, Rhys N. Colson<sup>1</sup>, Joshua W. T. Anderson<sup>1</sup>, Menachem J. Gunzburg<sup>1</sup>,  
5 Michelle A. Francisco<sup>3</sup>, Debashish Ray<sup>3</sup>, Tuhin Maity<sup>3</sup>, Monica Z. Wu<sup>3</sup>, Quaid D. Morris<sup>3</sup>, Timothy R.  
6 Hughes<sup>3</sup>, Jacqueline A. Wilce<sup>1</sup>, Julie M. Claycomb<sup>3,4</sup>, Zhiping Weng<sup>2,4</sup>, and Peter R. Boag<sup>1,4</sup>

7  
8 <sup>1</sup>Development and Stem Cells Program, Monash Biomedicine Discovery Institute and Department of  
9 Biochemistry and Molecular Biology, Monash University, Melbourne, VIC, Australia.

10 <sup>2</sup>Program in Bioinformatics and Integrative Biology, University of Massachusetts Medical School,  
11 Worcester, MA, USA.

12 <sup>3</sup>Department of Molecular Genetics, University of Toronto, Toronto, ON, Canada.

13  
14 \*These authors contributed equally to this work.

15 <sup>4</sup>Co-senior authors: [julie.claycomb@utoronto.ca](mailto:julie.claycomb@utoronto.ca), [zhiping.weng@umassmed.edu](mailto:zhiping.weng@umassmed.edu),  
16 [peter.boag@monash.edu](mailto:peter.boag@monash.edu)

17  
18 Running Title: NHL-2 is required for normal 22G-RNA pathway function

19  
20 Keywords: NHL-2, TRIM-NHL, 22G-RNA, RNAi *Caenorhabditis elegans*

21 **ABSTRACT**

22 Proper regulation of germline gene expression is essential for fertility and maintaining species integrity.  
23 In the *C. elegans* germline, a diverse repertoire of regulatory pathways promote the expression of  
24 endogenous germline genes and limit the expression of deleterious transcripts to maintain genome  
25 homeostasis. Here we show that the conserved TRIM-NHL protein, NHL-2, plays an essential role in  
26 the *C. elegans* germline, modulating germline chromatin and meiotic chromosome organization. We  
27 uncover a role for NHL-2 as a co-factor in both positively (CSR-1) and negatively (HRDE-1) acting  
28 germline 22G-small RNA pathways and the somatic nuclear RNAi pathway. Furthermore, we  
29 demonstrate that NHL-2 is a bona fide RNA binding protein and, along with RNA-seq data point to a  
30 small RNA independent role for NHL-2 in regulating transcripts at the level of RNA stability.  
31 Collectively, our data implicate NHL-2 as an essential hub of gene regulatory activity in both the  
32 germline and soma.

## 33 INTRODUCTION

34 The conserved family of TRIM-NHL proteins have emerged as key regulatory points of gene  
35 expression to impact a variety of processes including stem cell self-renewal, developmental patterning  
36 and cellular differentiation in metazoans (Tocchini and Ciosk, 2015). TRIM-NHL proteins contain a N-  
37 terminal tripartite motif (TRIM), composed of a zinc finger RING domain, one or two B-box zinc  
38 finger motifs (distinct from the RING domain), and a coiled-coil region, in association with six C-  
39 terminal NHL motifs (Supplemental Fig. S1). This combination of domains enables TRIM-NHL  
40 proteins to modulate gene expression in versatile ways, ranging from the ubiquitination of protein  
41 targets (via the RING domain and associated B-box motifs) (Ikeda and Inoue, 2012) to regulating  
42 mRNA stability or translation via the NHL domain (Loedige, et al., 2013). However, the full repertoire  
43 of gene regulatory activities and the developmental specificity of such functions by TRIM-NHL  
44 proteins remains to be fully elucidated.

45 How TRIM-NHL proteins regulate specific mRNAs is only beginning to become clear. The  
46 prevailing notion has been that TRIM-NHL proteins interact with mRNA via interactions with other  
47 proteins. For instance, the *Drosophila* TRIM-NHL protein Brat was long thought to recognize maternal  
48 mRNAs via an interaction with the RNA binding protein Pumilio (Sonoda and Wharton, 2001).  
49 However, TRIM-NHL proteins have recently been shown to directly bind to RNA via NHL motifs  
50 (Laver, et al., 2015; Loedige, et al., 2015; Loedige, et al., 2014). For some TRIM-NHL proteins, such  
51 as Brat, this interaction occurs with a reasonable degree of sequence specificity, with a preference for U  
52 rich motifs, and leads to the post-transcriptional and/or translational regulation of target transcripts  
53 (Laver, et al., 2015; Loedige, et al., 2015; Loedige, et al., 2014). In addition to binding and regulating  
54 RNA directly, several TRIM-NHL proteins have been implicated in miRNA-mediated regulation of

55 transcripts, adding another layer of complexity to their gene regulatory capacity (Hammell, et al., 2009;  
56 Schwamborn, et al., 2009; Neumuller, et al., 2008).

57 NHL-2 is one of five members of the TRIM-NHL family in *C. elegans* (including NHL-1, 2, 3;  
58 LIN-41; NCL-1). Thus far, these paralogs have been shown to control pluripotency (LIN-41)  
59 (Tocchini, et al., 2014), oocyte growth and meiotic maturation (LIN-41) (Tsukamoto, et al., 2017;  
60 Spike, et al., 2014), and inhibit translation (NCL-1) (Yi, et al., 2015). In comparison, NHL-2 has been  
61 shown function the sex determination pathway (McJunkin and Ambros, 2017) and also acts as a co-  
62 factor in the *C. elegans* miRNA pathway where it is required for proper developmental timing and cell  
63 fate progression (Karp and Ambros, 2012; Hammell, et al., 2009). In the miRNA pathway, NHL-2 does  
64 not impact the biogenesis of miRNAs but exerts a positive influence on RNA Induced Silencing  
65 Complex activity (RISC, including small RNA or miRNA bound to the Argonaute effector, along with  
66 accessory proteins) (Hammell, et al., 2009). NHL-2 associates with the miRNA specific Argonaute  
67 effectors, ALG-1/2, and other miRISC co-factors, including AIN-1/GW182 and the DEAD-box RNA  
68 helicase CGH-1/DDX6 (Hammell, et al., 2009). Furthermore, loss of *nhl-2* does not broadly affect  
69 miRNA activity, but instead specifically influences miRISC activity associated with two miRNAs: *let-*  
70 *7* and *lsy-6* (Hammell, et al., 2009). Similarly, the NHL-2 ortholog TRIM32 in *M. musculus* and *H.*  
71 *sapiens* regulates a small number of miRNAs, including *let-7a*, while in *D. melanogaster*, Brat and  
72 Mei-P26 have also been shown to act broadly as miRNA co-factors (Loedige, et al., 2014;  
73 Schwamborn, et al., 2009; Neumuller, et al., 2008). Individual TRIM-NHL proteins exert positive or  
74 negative effects on the miRNA pathway, and thereby control developmental programs (Loedige, et al.,  
75 2014; Schwamborn, et al., 2009; Neumuller, et al., 2008). Although the functions of NHL-2 in the  
76 soma are linked to miRNA function, what role, if any, NHL-2 plays in the germline remains unclear.

77 In addition to miRNAs, the small RNA regulatory repertoire in *C. elegans* includes endogenous  
78 small interfering RNAs (endo-siRNAs; 22G-RNAs, 26G-RNAs), and Piwi-interacting RNAs  
79 (piRNAs/21U-RNAs), which are part of an elaborate surveillance system to regulate homeostasis of the  
80 germline transcriptome (reviewed in (Billi, et al., 2014; Youngman and Claycomb, 2014)). The 22G-  
81 RNA family of endo-siRNAs is the most functionally diverse class of germline small RNAs (named  
82 22G because they are generally 22 nucleotides in length, and possess a 5'-triphosphorylated guanosine  
83 residue) (Gu, et al., 2009). It has been proposed that 22G-RNAs are selectively loaded onto either the  
84 Argonaute CSR-1 or the WAGO sub-family of AGOs, where they subsequently go on to fulfill distinct  
85 gene-regulatory functions (de Albuquerque, et al., 2015; Phillips, et al., 2015; Phillips, et al., 2014;  
86 Phillips, et al., 2012; Claycomb, et al., 2009; Gu, et al., 2009). The synthesis of 22G-RNAs relies on a  
87 complex containing an RNA dependent RNA polymerase enzyme (RdRP; EGO-1 or RRF-1), in  
88 association with the DEAD-box RNA helicase DRH-3 and the dual Tudor domain protein EKL-1 (Gu,  
89 et al., 2009; Aoki, et al., 2007). Although it remains largely unclear how the 22G-RNAs are specified  
90 for their different AGO effectors, one notable feature of the two pathways is that the CSR-1 22G-RNAs  
91 are produced solely by the RdRP EGO-1, while the WAGO 22G-RNAs rely on both RRF-1 and EGO-  
92 1 for their biogenesis (Phillips, et al., 2014; Phillips, et al., 2012; Claycomb, et al., 2009; Gu, et al.,  
93 2009).

94 The CSR-1 22G-RNAs are required for normal chromosome organization in the germline and  
95 embryos, likely due to genome-wide effects on chromatin and/or transcription (Wedeles, et al., 2013a).  
96 CSR-1 associates with genomic loci of its gene targets, and recent data point to a role for the CSR-1  
97 pathway in promoting the transcription of these germline genes trans-generationally (Cecere, et al.,  
98 2014; Conine, et al., 2013; Seth, et al., 2013; Wedeles, et al., 2013b; Claycomb, et al., 2009), as well as

99 post-transcriptionally fine-tuning the expression of target genes in embryos via its slicer activity  
100 (Gerson-Gurwitz, et al., 2016). In contrast, the WAGO 22G-RNAs, namely those associated with  
101 WAGO-1 and HRDE-1, are required for silencing of endogenous pseudogenes, transposons, and  
102 protein-coding genes both at the transcriptional and post-transcriptional levels. These activities are  
103 largely downstream of the piRNA pathway, and function to recognize and silence foreign nucleic acid  
104 (Ashe, et al., 2012; Buckley, et al., 2012; Shirayama, et al., 2012; Gu, et al., 2009). Together, the CSR-  
105 1 and WAGO pathways provide an epigenetic memory of self (CSR-1) from non-self (WAGOs)  
106 nucleic acid and are critical for maintaining genomic and transcriptional integrity of the germline  
107 (Wedeles, et al., 2014; Conine, et al., 2013; Seth, et al., 2013; Wedeles, et al., 2013b; Claycomb, et al.,  
108 2009).

109 Here we characterize the role of NHL-2 in the germline and provide evidence that, in addition  
110 to its role in the somatic microRNA pathway, NHL-2 is a biogenesis factor in the CSR-1 and WAGO  
111 germline 22G-RNA pathways. Like other 22G-RNA biogenesis factors and AGOs, including CSR-1  
112 and WAGO-1, NHL-2 localizes to P granules in the germline. Characterization of *nhl-2(ok818)*  
113 mutants reveals phenotypes consistent with loss of CSR-1 pathway activity, including: embryonic  
114 lethality, defects in oocyte chromosome organization, and aberrant accumulation of the repressive  
115 histone modification, H3K9me2 on germline autosome chromatin. We also found an unexpected role  
116 for NHL-2 in the nuclear RNAi pathway, and accompanying temperature-sensitive transgenerational  
117 fertility defect. Using an RNAi screen, we demonstrate that *nhl-2* genetically interacts with the 22G-  
118 RNA pathway components *drh-3*, *ekl-1*, *cde-1* and *csr-1*, and physically associates with CSR-1,  
119 HRDE-1 and DRH-3. High throughput sequencing of small RNAs in *nhl-2(ok818)* mutants reveals a  
120 depletion of 22G-RNAs for a subset of CSR-1 and WAGO target genes. Moreover, alterations in the

121 distribution of 22G-RNAs across CSR-1 target genes suggest a mechanism of NHL-2 action in 22G-  
122 RNA biogenesis, and implicate NHL-2 in distinct roles for germline versus somatic small RNA  
123 pathways. RNA binding assays demonstrate that NHL-2 is a bona fide RNA binding protein that  
124 specifically associates with U-rich sequences, and mRNA-seq experiments on *nhl-2(ok818)* mutants  
125 support the model that NHL-2 regulates a large number of somatic transcripts via this intrinsic RNA  
126 binding activity. Together, our results show that NHL-2 is a key factor in multiple facets of germline  
127 and somatic gene regulation.

128

## 129 **RESULTS**

### 130 **NHL-2 is Required for Normal Germline Function and is Enriched in Germ Granules**

131 While *nhl-2* mRNA is reported to be highly expressed in the *C. elegans* germline (Ortiz, et al.,  
132 2014; Reinke, et al., 2004) its function in this tissue remains relatively unknown. To determine if NHL-  
133 2 is required for fertility, we analyzed the brood size of wild-type and *nhl-2(ok818)* deletion null allele  
134 (Hammell, et al., 2009) animals at 20°C, 23°C and 25°C. At all three temperatures, compared to wild-  
135 type worms, *nhl-2(ok818)* displayed a significantly reduced brood size, and at 23°C and 25°C there was  
136 a significant increase in embryonic lethality (Fig. 1A, B). This temperature-dependent fertility defect  
137 has been described for several strong loss of function or null alleles of germline genes, including  
138 factors involved in small RNA pathways (Phillips, et al., 2012; Gu, et al., 2009; Van Wolfswinkel, et  
139 al., 2009; Wang and Reinke, 2008) and is likely to reflect temperature-sensitive processes in this tissue.

140 To determine if there were any gross morphological defects that would lead to infertility, we  
141 examined dissected one-day-old hermaphrodite germlines using DAPI staining with DIC and  
142 fluorescence microscopy. DIC microscopy revealed no overt morphological differences between *nhl-*



143 *2(ok818)* and wild-type germlines (data not shown). However, when we examined the organization of  
144 diakinetically oocyte chromosomes in wild-type and *nhl-2(ok818)* animals via DAPI staining, we noted  
145 severe defects in *nhl-2(ok818)* mutants at all temperatures. While wild-type diakinetically oocytes  
146 displayed six discrete DAPI bodies, indicative of homologous chromosome pairs, *nhl-2(ok818)* worms  
147 possessed a range of chromosomal abnormalities including aggregation into disorganized clumps, and  
148 greater than six DAPI bodies (Fig. 1C, D). Together these data indicate that NHL-2 is required for  
149 normal reproductive capacity and germline chromosome organization.

150 We next examined where and when NHL-2 is expressed in the germline. To do this, we raised  
151 antibodies against the N-terminus of NHL-2 and confirmed that the antibodies were specific for NHL-2  
152 by immunostaining *nhl-2(ok818)* mutant germlines (Supplemental Fig. 2A). We then co-stained wild-  
153 type germlines for NHL-2 and CGH-1, a germline helicase with which NHL-2 was previously shown  
154 to interact (Hammell, et al., 2009). We found that NHL-2 co-localizes with CGH-1 in the gonad in both  
155 perinuclear germ granules, known as P granules in *C. elegans*, and in the cytoplasmic core of the  
156 syncytial germline (Fig. 1E). P granules are cytoplasmic aggregations of mRNA and protein that  
157 contribute to germ cell fate, and many RNA regulatory pathways, including those involved in small  
158 RNA pathways, localize to these structures (Voronina, et al., 2011). We also observed that NHL-2  
159 localizes to P granules in early-stage embryos and was quickly lost from the somatic lineages after the  
160 4-cell stage (Supplemental Fig. 2B and data not shown), consistent with a previous study (Hyenne, et  
161 al., 2008).

162 Given the interaction of NHL-2 and CGH-1 in the somatic miRNA pathway (Hammell, et al.,  
163 2009), we next examined whether either factor is required for the proper localization of the other factor.  
164 First, the absence of NHL-2 does not appear to affect P granule formation, as the P granule markers

165 PGL-1, CAR-1 and CGH-1 localized normally in *nhl-2(ok818)* mutants (Supplemental Fig. S2A and  
166 data not shown). CGH-1 is essential for fertility and localization of several P granule components  
167 (Arnold, et al., 2014; Sengupta and Boag, 2012; Boag, et al., 2008; Audhya, et al., 2005; Boag, et al.,  
168 2005), however in a *cgh-1* loss of function mutant NHL-2 localized normally, while CAR-1 localized  
169 to “sheet-like” structures in the gonad core (Supplemental Fig. S2C). These data suggest that although  
170 NHL-2 has similar germline localization pattern to CGH-1 and functions with CGH-1 in the soma,  
171 NHL-2 may contribute to germline gene regulation through different mechanisms.

172

### 173 ***nhl-2* Genetically Interacts with the 22G-RNA Pathway**

174 To uncover any pathways in which NHL-2 may function to regulate germline development, we  
175 conducted a genome-wide RNAi screen for synthetic interactions (Davis, et al., 2017). Out of 11,511  
176 genes screened, we identified 42 genes, that when knocked down in the *nhl-2(ok818)* null background  
177 resulted in strong synthetic phenotypes, including sterility, embryonic lethality and larval arrest.  
178 Among the candidates are genes encoding factors required for biogenesis of the 22G-RNAs. These  
179 include the poly(U) polymerase CDE-1, along with the RdRP complex proteins EKL-1 (a dual Tudor  
180 domain protein) and DRH-3 (a Dicer related helicase), which have been shown to physically interact  
181 (Gu, et al., 2009). CDE-1 was specifically implicated in the CSR-1 22G-RNA pathway, while DRH-3  
182 and EKL-1 function in both CSR-1 and WAGO 22G-RNA pathways.

183 Notably, previous data demonstrated that CSR-1 pathway components display defects in  
184 diakinetik chromosome organization similar to *nhl-2(ok818)* mutants (Claycomb, et al., 2009; She, et  
185 al., 2009; Van Wolfswinkel, et al., 2009; Nakamura, et al., 2007). To more carefully assess the genetic  
186 interaction between *nhl-2(ok818)* and these 22G-RNA factors, we examined diakinetik oocyte defects

187 when we knocked down these genes in wild-type versus *nhl-2(ok818)* animals (Fig. 2A-E). Because of  
188 the link between *cde-1* and *csr-1*, we also examined *csr-1* in these assays. Diakinetic oocyte  
189 chromosomal organization was binned into four categories in our assays: 1) normal morphology, where  
190 6 pairs of homologous chromosomes were evident, 2) >6 chromosomes, where univalent (unpaired)  
191 chromosomes were present, 3) aggregated chromosomes, where clumping of chromosomes was  
192 observed, 4) enhanced aggregation, where chromosomes were tightly clumped. Consistent with  
193 previous results, we observed chromosome anomalies when *drh-3*, *csr-1*, *ekl-1* or *cde-1* were knocked  
194 down in wild-type animals (Fig. 2A-E). Importantly, knockdown of each 22G-RNA factor in *nhl-*  
195 *2(ok818)* mutants resulted in significantly enhanced chromosomal aggregation (Fig. 2A-E) at both  
196 20°C and 25°C. Furthermore, and consistent with these results, we observed an increase in the  
197 embryonic lethality of *nhl-2(ok818)* animals depleted of CSR-1 pathway factors, pointing to a strong  
198 synthetic interaction (Supplemental Fig. S3).

199 Another phenotype common among CSR-1 22G-RNA pathway co-factors is the abnormal  
200 accumulation of the repressive histone modification, Histone H3, Lysine 9 di-methylation (H3K9me2)  
201 on autosomes (She, et al., 2009). Normally, chromosomes that do not possess a pairing partner during  
202 meiosis (including the male X chromosome) are enriched for H3K9me2 and transcriptionally silenced  
203 in a process termed Meiotic Silencing of Unpaired Chromatin (MSUC). Loss of the CSR-1 pathway  
204 leads to aberrant accumulation of H3K9me2 on autosomes and results in homologous pairing defects.  
205 Given the synthetic interaction of *nhl-2* with factors in the CSR-1 22G pathway, we examined if *nhl-*  
206 *2(ok818)* mutants displayed altered H3K9me2 distribution. Using an antibody specific for H3K9me2,  
207 we immunostained germlines from wild-type males depleted for *drh-3* or *csr-1* by RNAi and compared  
208 them to *nhl-2(ok818)* males (Fig. 2F). Consistent with previous reports, depletion of *drh-3* or *csr-1* in

209 wild-type males resulted in abnormal accumulation of H3K9me2 (Wang and Reinke, 2008).  
210 Interestingly, *nhl-2(ok818)* males also display abnormal H3K9me2 accumulation in a similar manner to  
211 that observed in *drh-3(RNAi)* and *csr-1(RNAi)* animals. We quantified the defects in H3K9me2 patterns  
212 as follows: 1) normal, where each germ cell displayed one strong H3K9me2 signal (as seen in wild-  
213 type), 2) elevated, where germ cells displayed one or more H3K9me2 markings that were greater than  
214 that of wild-type germ cells, 3) dispersed, where H3K9me2 markings were distributed on various  
215 chromosomes within a germ cell (Fig. 2G). Abnormal autosomal H3K9me2 enrichment in *nhl-*  
216 *2(ok818)* germ cells suggests that *nhl-2(ok818)* mutants have errors in MSUC and meiotic synapsis  
217 similar to *drh-3* or *csr-1*, and are consistent with a role for NHL-2 in the CSR-1 pathway.

218

### 219 **NHL-2 is required for nuclear RNAi inheritance**

220 Multiple components of small RNA pathways have been shown to be required for nuclear  
221 RNAi and germline immortality (Spracklin, et al., 2017; Weiser, et al., 2017; Ashe, et al., 2012;  
222 Buckley, et al., 2012), therefore, we next examined if NHL-2 is required for these pathways. To  
223 examine nuclear RNAi, we focused on the polycistronic pre-mRNA that encodes the non-essential gene  
224 *lir-1* and the essential gene *let-26* (Bosher, et al., 1999). In wild-type animals, RNAi targeting *lir-1*  
225 results in the silencing of the polycistronic pre-mRNA by the nuclear RNAi pathway, resulting in *let-26*  
226 phenotypes of larval arrest and lethality (Fig. 3A) (Bosher, et al., 1999). Interestingly, *nhl-2(ok818)*  
227 animals were resistant to *lir-1* RNAi and closely resembled *nrde-2* and *rde-4* nuclear RNAi mutants  
228 (Fig. 3B). Some RNAi factors, such as *hrde-1*, have a temperature-sensitive transgenerational mortal  
229 germline (Mrt) phenotypes (Spracklin, et al., 2017; Weiser, et al., 2017; Ashe, et al., 2012; Buckley, et  
230 al., 2012), therefore, we tested if *nhl-2(ok818)* also displays this phenotype. Consistent with the Mrt

231 phenotype, after 10-12 generations *nhl-2(ok818)* worms grown at 25°C became sterile (Fig. 3C) while  
232 wild-type worms remained fertile. We next examined if shifting *nhl-2(ok818)* worms grown at 25°C to  
233 20°C could rescue the decline in fertility in subsequent generations. As has been demonstrated for other  
234 Mrt mutants (Spracklin, et al., 2017; Ni, et al., 2016), when the F1 generation of *nhl-2(ok818)* worms  
235 were moved at the L1 stage to 20°C it took 3 generations for the brood size to recover to the normal  
236 *nhl-2(ok818)* level (Fig. 3D). Similarly, embryonic lethality took a generation to recover to the *nhl-*  
237 *2(ok818)* 20°C level (Fig. 3E). These findings are consistent the Mrt phenotype observed in mutants in  
238 the nuclear RNAi pathway and suggests the decreased brood size observed at 25°C is not simply the  
239 result of DNA damage. Together these data are consistent with NHL-2 participating in nuclear RNAi  
240 and multigenerational epigenetic inheritance pathways.

241

#### 242 **NHL-2 Physically Interacts with CSR-1 and HRDE-1 Pathway Proteins**

243 Because NHL-2 had previously been shown to physically interact with miRNA Argonautes, we  
244 decided to test for any association with the 22G-RNA-associated AGOs CSR-1 and HRDE-1. We first  
245 performed co-Immunoprecipitation of endogenous NHL-2 and probed for CSR-1 by western blotting.  
246 Indeed, we found that CSR-1 associates with NHL-2 by co-IP in adult hermaphrodites (Fig. 4A). We  
247 then moved on to test for interactions with other members of the CSR-1 pathway by similar  
248 experiments, and found an interaction between NHL-2 and the RdRP complex helicase, DRH-3 (Gu, et  
249 al., 2009) (Fig. 4B). To test for additional protein interactions by a separate method, we incubated  
250 purified GST-tagged full-length NHL-2 with protein lysate and determined whether NHL-2 was able to  
251 interact with components of the 22G-RNA biogenesis machinery by western blotting. In these  
252 experiments, we observed that GST-NHL-2 associated with both CSR-1 and HRDE-1 from whole adult

253 worm lysates, but not WAGO-1, or other components of the EGO-1, RRF-1 or EKL-1 (Fig. 4C, data  
254 not shown). These data indicate that NHL-2 associates with CSR-1 and HRDE-1 pathway proteins at  
255 multiple points of pathway activity (with DRH-3 of the RdRP complex and with AGO effectors of the  
256 RISC).

257 The C-terminal RING domain of TRIM-NHL proteins is often associated with E3 ubiquitin  
258 ligase activity and proteasome-mediated protein turnover. To determine whether NHL-2 functions as  
259 an E3 ubiquitin ligase that targets proteins of the CSR-1 pathway for degradation, we examined CSR-1  
260 expression in wild-type and *nhl-2(ok818)* one-day-old adult animals. We observed comparable levels  
261 of both CSR-1 and DRH-3 protein in wild-type and *nhl-2(ok818)* animals (Supplemental Fig. S4A and  
262 data not shown for DRH-3), suggesting that the association of NHL-2 and CSR-1 is not related to  
263 potential E3 ubiquitin ligase activity by NHL-2.

264

### 265 **NHL-2 Is Required for Maintaining the Steady-State Levels of 22G-RNAs**

266 To explore the role of *nhl-2* in the biogenesis or stability of the 22G-RNAs, we conducted small  
267 RNA high throughput-sequencing of wild-type and *nhl-2(ok818)* animals at 20°C and 25°C  
268 (Supplemental Table S1, S3). The overall size and first nucleotide distributions of small RNA species  
269 in *nhl-2(ok818)* mutants are consistent with the wild-type controls at both temperatures (Supplemental  
270 Fig. S5, S6). However, when we began to examine particular classes of small RNAs in each genotype  
271 and at the different temperatures, we observed some interesting differences.

272 First, we observed overall changes in some small RNA populations in both wild-type and *nhl-*  
273 *2(ok818)* mutants at the higher temperature. There was an overall decrease in 21U-RNAs at 25°C  
274 compared with 20°C, for both wild-type and *nhl-2(ok818)* mutants (Supplemental Figs. S5, S4, S6).

275 This may reflect the temperature-dependent nature of the production or stability of these small RNAs.  
276 Notably, many mutants in the piRNA and 26G-RNA pathways exhibit temperature sensitive fertility  
277 defects that appear to be consistent with an overall decline in these small RNA populations at higher  
278 temperatures. 21-23nt siRNA levels (which encompass the 22G-RNA category) increased slightly in  
279 both wild-type and *nhl-2(ok818)* mutants at 25°C compared to 20°C, while miRNA levels were  
280 relatively unchanged in both strains between temperatures (Supplemental Figs. S5, S6, S7).

281 Next, we compared wild-type and *nhl-2(ok818)* mutant small RNA populations at each  
282 temperature. We observed a consistent decrease in 22G-RNA and 26G-RNA populations in *nhl-*  
283 *2(ok818)* mutants relative to wild-type at 25°C (Supplemental Figs. S5, S6, S7). Concomitant with the  
284 22G-RNA decreases, we observed an increase in the proportion of miRNAs in *nhl-2(ok818)* mutants.  
285 While it is possible that this change in miRNAs is biologically meaningful, it is more likely due to a  
286 “filling in” of the cloning space when small RNA populations are expressed as a proportion of the total  
287 reads, as previous reports observed little change in miRNA levels in *nhl-2(ok818)* mutants (Hammell,  
288 et al., 2009). Finally, we observed decreases in the 21U-RNA populations of *nhl-2(ok818)* mutants  
289 relative to wild-type at 20°C, which are not evident at 25°C.

290 Because of their abundance and the link between NHL-2, CSR-1, and the RdRP complex that  
291 synthesizes 22G-RNAs (via an interaction between NHL-2 and DRH-3), we examined this class of  
292 small RNAs in greater depth (Fig. 5A, B, Supplemental Table S2). We observed that 573 and 724  
293 genes display a two-fold or greater depletion of 22G-RNAs in *nhl-2(ok818)* mutants relative to wild-  
294 type at 20°C and 25°C respectively, with 381 genes in common between the two temperatures (the top-  
295 right Venn-pie diagram in Figure 5A).

296 The genes depleted of 22G-RNAs in *nhl-2(ok818)* mutants at 20°C are enriched in WAGO-1  
297 and HRDE-1 target genes (Fig. 5A), comprising 36.5% (209/573; hypergeometric test q-value or  $q =$   
298 9.6E-80) and 36.6% (210/573;  $q = 2.1E-83$ ), respectively, with 66 genes shared between the two  
299 WAGOs (WAGO-1 targets are as defined in (Gu, et al., 2009), and HRDE-1 targets are as defined in  
300 (Shirayama, et al., 2012). Consistent with this result, 74.5% (427/573;  $q = 1.6E-296$ ) of these genes  
301 were depleted of 22G-RNAs in a mutant strain that carries mutations in twelve *wago* (12-fold *wago*  
302 mutant including mutations in *hrde-1* and *wago-1* (Gu, et al., 2009)). Notably, 33% (189/573;  $q = 3.7E-$   
303 5) of these genes are CSR-1 targets, with only 17 of these genes overlapping with HRDE-1 or WAGO-  
304 1 targets (CSR-1 targets are as defined in (Tu, et al., 2015)).

305 Similar to the results at 20°C, 29.3% of the 724 genes depleted of 22G-RNAs in *nhl-2(ok818)*  
306 mutants at 25°C are CSR-1 target genes (212/724;  $q = 3.7E-2$ ), while 33.7% and 37.2% are WAGO-1  
307 and HRDE-1 targets (244/724 and 269/724;  $q = 2.1E-85$  and  $4.7E-110$ ; with 139 genes in common).  
308 Nearly 78% (563/724,  $q < 1E-300$ ) of the genes depleted of 22G-RNAs in *nhl-2(ok818)* mutants at  
309 25°C overlap with genes depleted of small RNAs in the 12-fold *wago* mutant. Finally, the majority of  
310 genes depleted of 22G-RNAs in *nhl-2(ok818)* mutants at either temperature significantly overlap with  
311 genes depleted of 22G-RNAs in RdRP complex mutants, *ekl-1(tm1599)*, *ego-1(om97)*, and *drh-*  
312 *3(ne4253)* (all  $q$ -values  $< 7.3E-195$ ) (Fig. 5A). The overlap between genes depleted of 22G-RNAs in  
313 *nhl-2(ok818)* mutants and the three well characterized germline small RNA pathways, coupled with the  
314 overlapping phenotypes of *nhl-2(ok818)* and *ago* mutants point to a role for NHL-2 in germline small  
315 RNA pathways overall.

316 The *glp-4(bn2)* small RNA data set reveals the complete repertoire of germline genes targeted  
317 by 22G-RNAs (Tu, et al., 2015; Gu, et al., 2009), as these mutants do not possess significant germline



318 tissue, and 5,971 genes show a two-fold or greater depletion of small RNAs. Consistent with the role of  
319 NHL-2 in fertility and germ cell development (Fig. 1, 2), 83.8% (480/573,  $q = 2.6E-166$ ) and 83.4%  
320 (604/724  $q = 3.9E-209$ ) of the genes depleted of 22G-RNAs in *nhl-2(ok818)* mutants at 20°C and 25°C,  
321 respectively, are also depleted of 22G-RNAs in *glp-4(bn2)* mutants (Fig. 5A). These data indicate that  
322 the genes depleted of 22G-RNAs in *nhl-2(ok818)* mutants are targeted by 22G-RNAs in the germline.  
323 Further comparison with the male- and female-specific gonad gene expression data indicated that  
324 58.4% (423/724;  $q$ -value = 0.0128) and 61.6% (353/573;  $q$ -value =  $1E-4$ ) of the genes depleted of 22G-  
325 RNAs in *nhl-2(ok818)* mutants at 25°C and 20°C respectively overlap with genes generally expressed  
326 in the gonad (meaning that they are expressed in both the spermatogenic or oogenic gonads) (Fig. 5B).  
327 We observed a subtle, but statistically significant enrichment for oogenic genes in the *nhl-2(ok818)*  
328 depleted gene sets (16.4%, 119/724 genes at 25°C,  $q = 2.2E-11$ , 22.5%, 129/573 genes at 20°C,  $q$ -value  
329 =  $2.7E-24$ ). This observation may simply be reflective of the developmental stage from which the  
330 samples were prepared (young adults undergoing oogenesis), but is also consistent with oogenesis  
331 defects we observed in *nhl-2(ok818)* mutants.

332

### 333 **NHL-2 Is Required for 22G-RNA Coverage at the 5' Portion of CSR-1 Target Genes**

334 The decrease in steady-state levels for a subset of 22G-RNAs in *nhl-2(ok818)* mutants could  
335 indicate a defect in 22G-RNA synthesis or stability. Given the link between NHL-2 and the RdRP  
336 complex, we hypothesized that NHL-2 could affect 22G-RNA synthesis to a greater extent than  
337 turnover. Thus, we performed a metagene analysis to examine the distribution of 22G-RNAs across the  
338 gene body (Fig. 5C-E, Supplemental Fig. S8). In wild-type worms, 22G-RNAs are distributed across  
339 the entire length of WAGO target genes and are present in greater abundance than CSR-1 22G-RNAs.

340 Conversely, CSR-1 target genes generally have fewer 22G-RNAs targeting them overall, with a slight  
341 bias in small RNA coverage toward the 5' end. In *nhl-2(ok818)* mutants at 25°C relative to wild-type,  
342 we noted that the distribution of 22G-RNAs at WAGO targets was generally unchanged over the entire  
343 locus.

344 For CSR-1 target genes, the distribution of 22G-RNAs in *nhl-2(ok818)* mutants was distinct  
345 from that in wild-type worms. At both 20°C and 25°C, there was a significant decrease in the  
346 abundance of 22G-RNAs over the 5' half of the gene in *nhl-2(ok818)* mutants relative to wild-type  
347 controls (at 20°C, there was a 33.6% reduction in 22G-RNAs, t-test p-value = 1.4E-79; at 25°C, there  
348 was a 15.5% reduction in 22G-RNAs, t-test p-value = 1.77E-9). Examined a different way, the centroid  
349 of the 22G-RNA distribution for the group of CSR-1 target genes shifts by 5.77% of the metagene  
350 length towards the 3' end in *nhl-2(ok818)* mutants relative to the wild-type at 25°C (Wilcoxon rank-  
351 sum test p-value = 3.67E-29; Fig. 5C, Supplemental Fig. S8). These data suggest that NHL-2 may  
352 influence the activity and/or processivity of the RdRP complex.

353 Because our small RNA results indicated a possible role for NHL-2 in RdRP complex  
354 processivity or activity, and we had observed genetic and physical interactions between NHL-2 and the  
355 RdRP complex via DRH-3, we asked whether NHL-2 was required for the formation or stability of the  
356 RdRP complex. Therefore, we tested whether the CSR-1 RdRP complex, as measured by an  
357 association between the key components DRH-3 and EGO-1, could properly form in the absence of  
358 NHL-2. To answer this question, we immunoprecipitated DRH-3 and probed for EGO-1 and EKL-1,  
359 three key components of the CSR-1 RdRP complex, and found that the association between DRH-3,  
360 EGO-1, and EKL-1 was maintained in the absence of NHL-2 (Supplemental Fig. S4). Thus, NHL-2 is  
361 not required for the formation or maintenance of the RdRP complex, and may play a different role in

362 the biogenesis of 22G-RNAs, possibly in the handoff of newly synthesized 22G-RNAs to CSR-1  
363 (because of its physical association with both CSR-1 and DRH-3), aiding the assembled RdRP complex  
364 in moving along the RNA template, or in the selection of particular mRNAs as templates for 22G-RNA  
365 synthesis.

366

### 367 **The NHL Domain of NHL-2 Binds RNA**

368 We went on to explore a role for NHL-2 in directly interacting with mRNA transcripts. The  
369 NHL domain of the TRIM-NHL protein Brat from *D. melanogaster* was recently shown to be a  
370 sequence-specific RNA binding protein, which suggests other NHL domain proteins may also bind  
371 directly to RNA (Loedige, et al., 2014). To determine whether the C-terminal NHL domain of NHL-2  
372 binds RNA, we first generated a structural homology model based on the crystal structure of Brat  
373 (Edwards, et al., 2003). This modeling of the NHL domain revealed the canonical six-bladed  
374 "propeller" characteristic of this domain. It also showed that much of the surface of the protein was  
375 positively charged and therefore would likely interact with negatively charged RNA molecules (Fig.  
376 6A). To explore if the NHL domain of NHL-2 binds to RNA we performed the RNAcompete *in vitro*  
377 binding assay (Ray, et al., 2013; Ray, et al., 2009). We expressed and purified a GST-tagged NHL  
378 domain of NHL-2 and incubated it with a complex pool of 240,000 30-41mer RNAs. RNAs that co-  
379 purified with the GST-tagged NHL domain were identified by microarrays and revealed a strong  
380 binding preference for U-enriched RNAs, with a core consensus of UUUU, and preference for U  
381 residues 5' and 3' to the core (Fig. 6B). We next examined the binding affinity of the NHL domain for a  
382 5'-Fluorescein labelled 17mer poly-U RNA oligonucleotide using fluorescence anisotropy. In these  
383 experiments, GST-tagged NHL domain at a range of concentrations was mixed with poly-U RNA

384 oligonucleotide and allowed to reach equilibrium. These experiments yielded an equilibrium  
385 dissociation constant of  $K_D = 0.41 \pm 0.02 \mu\text{M}$ , and were consistent with a one-site binding model (Fig.  
386 6C). These data strongly suggest that NHL-2 is a bona fide RNA-binding protein with an ability to  
387 bind U rich sequences.

388

### 389 **Steady State mRNA Levels are Altered Independent of Small RNA Levels in *nhl-2(ok818)***

#### 390 **Mutants**

391 Because of its link to multiple small RNA pathways and its capacity to bind RNA, we asked  
392 whether NHL-2 plays a role in transcript regulation. To test this, we performed mRNA-seq in wild-type  
393 (N2) and *nhl-2(ok818)* adult animals at both 20°C and 25°C, with three biological replicates each (Fig.  
394 7A, Supplemental Table S3). At 20°C, we observed less extensive changes in steady-state mRNA  
395 levels in *nhl-2(ok818)* mutants, with 1,014 genes increased and 1,630 genes decreased by two-fold or  
396 greater. This is in contrast to 25°C, where we identified 3,554 genes with two-fold or greater increases  
397 in steady-state mRNA levels, and 4,370 genes with two-fold or greater decreased steady-state mRNA  
398 levels in *nhl-2(ok818)* mutants relative to wild-type (Fig. 7A). There was a significant overlap of genes  
399 up-regulated in *nhl-2(ok818)* between the two temperatures (643 genes; q-value = 6.2E-249). Similarly,  
400 there was a significant overlap between down-regulated genes at both temperatures (1,326 genes; q-  
401 value < 1E-300). We then went on to examine the genes with altered expression in more detail.

402 Based on the previously described role for NHL-2 with *let-7* and *lsy-6* in the miRNA pathway,  
403 we first asked whether predicted targets of these particular miRNAs were de-repressed upon loss of  
404 *nhl-2* (Fig. 7B). Although several lines of data previously suggested that NHL-2 functioned with  
405 miRISC in the translational regulation of targets, no genome-wide transcriptome data in *nhl-2(ok818)*

406 mutants were available to test the possibility that NHL-2 and miRISC could impact targets via mRNA  
407 stability or turnover. Using TargetScan (Worm Release 6.2, June 2012), we identified 162 predicted  
408 targets of *lsy-6*, and 126 predicted targets of the *let-7* family of miRNAs. Only 33 of the 162 predicted  
409 *lsy-6* target mRNAs and 29 of the 126 *let-7* family predicted targets were up-regulated in *nhl-2(ok818)*  
410 mutants at 25°C. Examining the data the other way around, we asked if the genes up-regulated in *nhl-*  
411 *2(ok818)* mutants were enriched for *let-7* or *lsy-6* predicted targets and found no correlation (data not  
412 shown). Overall, these data indicate that miRNA target genes are not regulated by NHL-2 at the level  
413 of transcript abundance or stability, and instead, NHL-2 is likely to exert a predominantly translational  
414 mode of regulation on these genes.

415 We next asked whether the genes with altered 22G-RNA levels in *nhl-2(ok818)* mutants were  
416 differentially expressed (Fig. 7C, Supplemental Fig. S7). First, we overlapped the sets of genes  
417 depleted of 22G-RNAs in *nhl-2(ok818)* mutants at either temperature and were surprised to find only  
418 modest effects overall. Of the 573 genes depleted of 22G-RNAs at 20°C, 78 displayed increased  
419 steady-state mRNA levels (13.6%; 78/573 genes; q-value = 3.3E-14) and 11 had decreased steady-state  
420 mRNA levels (1.9%; 11/573: not significant). At 25°C, 724 genes showed depleted 22G-RNA levels,  
421 and of these 210 were up-regulated (29%; 210/724, q-value = 1.8E-13), while 81 were down-regulated  
422 (11.2%; 81/724: not significant). Thus, overall, genes displaying altered 22G-RNA levels were not  
423 extensively affected at the mRNA level by the loss of *nhl-2*, and the fraction that were affected at the  
424 mRNA level tended to be repressed by NHL-2 under wild-type conditions. Overall, these data are  
425 consistent with a role for NHL-2 in the biogenesis, but not necessarily the effector steps, of a subset of  
426 22G-RNAs. These data could also point to a role for NHL-2 in regulating the translation of this subset

427 of germline small RNA target genes for which the 22G-RNA levels are altered in *nhl-2(ok818)*  
428 mutants, perhaps in a manner similar to the miRNA pathway.

429         Next, we examined the steady state levels by evaluating the levels of CSR-1 or WAGO pathway  
430 target genes in *nhl-2(ok818)* mutants, independent of any changes in 22G-RNA levels. In accordance  
431 with the opposing roles of the WAGO and CSR-1 pathways in germline gene regulation, we anticipated  
432 that the WAGO targets with decreased 22G-RNAs would display increased mRNA levels, while the  
433 CSR-1 targets with decreased 22G-RNAs would display decreased mRNA levels in *nhl-2(ok818)*  
434 mutants. We observed that a statistically significant subset of WAGO-1 target genes (18%; 141/1718  
435 genes; q-value = 9.9E-8) were de-repressed at 20°C, and 291 out of 1718 WAGO-1 target genes were  
436 de-repressed at 25°C (16.9%; q = 0.6790). HRDE-1 target genes also tended to be up-regulated in *nhl-*  
437 *2(ok818)* mutants at both temperatures (141/1661; 8.5% q-value = 9.9E-9 at 20°C, 335/1661; 20.2%, q-  
438 value = 9.9E-2 at 25°C). These results are consistent with a cooperative role for NHL-2 in the  
439 repression of WAGO target genes, albeit in a small RNA-independent manner.

440         Unexpectedly, CSR-1 target mRNAs were significantly up-regulated *nhl-2(ok818)* mutants, and  
441 this effect occurred specifically at 25°C (2,025/4932; 41%, q-value < 1E-300). Similarly, when  
442 examined the behavior of total set of genes targeted by germline small RNAs using the *glp-4(bn2)*  
443 mutant, we found a strong overlap between genes depleted of small RNAs in the *glp-4(bn2)* mutant and  
444 genes up-regulated in *nhl-2(ok818)* mutants specifically at 25°C (60%; 2155/3554, q-value < 1E-300)  
445 (Fig. 7C). These results are consistent with a small RNA-independent role for NHL-2 in the repression  
446 of CSR-1 22G-RNA targets, and this activity is antagonistic to the action of CSR-1. Moreover, the  
447 functions of NHL-2 in regulating germline small RNA pathway target genes, especially those of the  
448 CSR-1 pathway, appear to be particularly important at high temperature (25°C) or perhaps other

449 stressful conditions. Overall, the changes in steady-state mRNA levels for germline 22G-RNA pathway  
450 target genes point to a role for NHL-2 in regulating transcripts via its intrinsic RNA binding capacity.

451

## 452 **Loss of *nhl-2(ok818)* Impacts Genes Involved in Gametogenesis, Signaling, and Chromosome** 453 **Organization**

454 In an attempt to link alterations in gene expression to changes in phenotype for *nhl-2(ok818)*  
455 mutants, we next compared the *nhl-2(ok818)* transcriptome data to spermatogenic versus oogenic  
456 gonad transcriptomes (Ortiz, et al., 2014) (Fig. 7D). First, we found that a large fraction of genes that  
457 were mis-expressed in *nhl-2(ok818)* mutants at both temperatures were represented in total gonad  
458 transcriptomes (20°C up-regulated genes 41.1%, 417/1014, q-value = 1; 20°C down-regulated genes  
459 69.4%, 1131/1630, q-value = 7.2E-46; 25°C up-regulated genes 75.9%, 2696/3554, q-value = 5.0E-  
460 216; 25°C down-regulated genes 56.8%, 2482/4370, q-value = 3.1E-9), indicating that most of the mis-  
461 regulated transcripts are expressed in the germline. Next, we found that genes up-regulated in *nhl-*  
462 *2(ok818)* mutants at 25°C were significantly enriched for gender neutral and oogenesis-associated  
463 transcripts (46.1%, 1637/3554; 25.2%, 894/3554; hypergeometric test q-values = 3.8E-100, and 2.8E-  
464 259, respectively), while, for those genes up-regulated at 20°C, only oogenesis-associated transcripts  
465 were enriched (14%, 142/1014; hypergeometric test q-value = 9.2E-8). Interestingly, down-regulated  
466 genes in *nhl-2(ok818)* mutants at both 20°C and 25°C were enriched for spermatogenesis-associated  
467 transcripts (47%, 766/1630; 35.6%, 1556/4370; hypergeometric test q-value = 1.8E-265 and <1E-300,  
468 respectively). These data point to an overall misregulation of the germline transcriptome that leads to  
469 defects gametogenesis and decreased fertility.

470           Given that NHL-2 and CGH-1 have been shown to physically interact, we next compared the  
471 CGH-1 RNA-IP/microarray data with the *nhl-2(ok818)* transcriptome data (Fig. 7D). In the germline,  
472 CGH-1 is required to protect specific maternal mRNAs (which overlap with those enriched in the  
473 oogenesis and gender neutral transcriptomes) from degradation, and is also involved in translational  
474 regulation of some transcripts(Boag, et al., 2008). We observed a small, but significant, enrichment  
475 between CGH-1-associated and up-regulated transcripts in *nhl-2(ok818)* mutants at 25°C, (12.9%,  
476 458/3554; hypergeometric test q-values = 4.2E-76). These data suggest an antagonistic role between  
477 NHL-2 and CGH-1 in the regulation of the stability of these transcripts. To determine if there was any  
478 interaction with NHL-2 and other described germline RNP complexes we examined mRNA targets of  
479 the cytoplasmic poly(A) polymerase GLD-2 targets and the RNA-binding proteins OMA-1 and LIN-  
480 41, all three critical for post-transcriptional regulation of the oocyte-to-embryo transitions (Tsukamoto,  
481 et al., 2017). Similar to CGH-1-associated transcripts, GLD-2 target mRNAs (16.5%, 588/3554, q-  
482 value = 1.0E-207) and OMA-1 (20.4%, 725/3554, q-value = 7E-67) and LIN-41-enriched transcripts  
483 (13%, 462/3554, q-value = 8E-80) had a small but significant enrichment compared to up-regulated  
484 transcripts in *nhl-2(ok818)* mutants at 25°C. This is consistent with the strong overlap between genes  
485 expressed during oogenesis and those upregulated in *nhl-2(ok818)* mutants at 25°C. These data suggest  
486 that NHL-2 does not regulate the majority of mRNAs found in the key pathways governing the oocyte-  
487 to-embryo transitions, however, we cannot rule out any translational effects of NHL-2 in this context.

488           When we performed Gene Ontology (GO) analysis, we found that the genes that are down-  
489 regulated in *nhl-2(ok818)* mutants at 20°C and 25°C shared consistent sets of GO terms, and are  
490 strongly enriched in cuticle/collagen proteins, kinases and phosphatases, and spermatogenesis proteins  
491 (FDR = 6.1E-20 *protein kinase, core*, 7.9E-25 *phosphatase activity*, and 1.5E-31 *major sperm protein*,



492 respectively). Genes that are up-regulated in *nhl-2(ok818)* mutants at 20°C are weakly enriched in  
493 signaling molecules and oxidative metabolism (FDR = 1.4E-12 *signal peptide*, and 2.8E-3 *oxidation*  
494 *reduction*, respectively), and differ from the GO terms observed for the genes up-regulated at 25°C,  
495 which were enriched for cell cycle, *kinetochore*, *RNA-binding* and *DNA replication* and *damage repair*  
496 (FDR = 5.5E-35 cell cycle, 3.7E-12 *kinetochore*, 1.1E-16 *RNA binding*, and 3.7E-14 *DNA replication*  
497 and 9.6E-10 damage repair GO terms. In addition to analyzing the complete sets of up-regulated or  
498 down-regulated genes in the *nhl-2(ok818)* mutants, we also performed GO analysis on sets of  
499 transcripts that were expressed in the gonad, and observed comparable results (data not shown).  
500 Collectively, our data point to a role for NHL-2 in regulating the stability of a large fraction of  
501 gonad/germline transcripts that are involved in spermatogenesis, cellular signaling cascades, cuticle  
502 formation, and kinase/phosphatase activities, and chromosome organization. NHL-2 impacts these  
503 mRNAs both positively and negatively, and likely utilizes the intrinsic RNA binding properties of its  
504 NHL domain, perhaps in association with other protein binding partners, to do so.

505

## 506 **DISCUSSION**

507 TRIM-NHL proteins have been shown to play a variety of crucial roles in the context of the  
508 proliferation versus differentiation decision in metazoans. With modular and varied domains, TRIM-  
509 NHL proteins can function as E3 ligases as well as sequence-specific RNA binding proteins  
510 (Schwamborn, et al., 2009; Kudryashova, et al., 2005). TRIM-NHL proteins also engage the miRNA  
511 pathway, whereby, remarkably, their functions relate to only a few miRNAs, and impact the efficacy of  
512 the RISC both positively and negatively. With their intrinsic RNA binding activity, TRIM-NHL

513 proteins could regulate RNA directly or function at various steps and in virtually any small RNA  
514 pathway.

515 NHL-2 is one of five TRIM-NHL proteins in *C. elegans* (paralogs include NHL-1, -3, LIN-41,  
516 and NCL-1). NHL-2 has been shown to modulate miRISC via two specific miRNAs, *let-7* and *lys-6*,  
517 which act in the soma to regulate developmental timing and cell fate transitions in multiple tissues.  
518 Recently it was also shown that NHL-2 is also required for sex determination, although the mechanism  
519 is unclear (McJunkin and Ambros, 2017). In spite of these intriguing roles for NHL-2 in the embryo  
520 and soma, little is known about its functions in germline development. Here, we set out to explore a  
521 role for NHL-2 in the germline and in germ cell development. We found that NHL-2 is required for  
522 proper germline chromatin organization and wild-type levels of fertility at high temperatures and for  
523 the somatic nuclear RNAi pathway. We also identified the AGOs CSR-1 and HRDE-1 and the RdRP  
524 component DRH-3 as genetic and physical interactors of NHL-2. High throughput sequencing of small  
525 RNA populations in *nhl-2(ok818)* mutants revealed an additional role for NHL-2 in the WAGO-1, and  
526 HRDE-1 22G-RNA pathways, but as previous data suggested, little biologically meaningful  
527 perturbation in the overall miRNA population. Binding assays confirm that NHL-2 is a bona fide RNA  
528 binding protein, and examination of the mRNA transcriptome by mRNA-seq points to NHL-2 as a  
529 post-transcriptional regulator of a substantial set of mRNAs involved in signaling, phosphorylation and  
530 transcription independent of its small RNA activities. Together, our data, implicate NHL-2 as a  
531 regulator of mRNA stability for a significant portion of the genome, a likely translational regulator of  
532 miRNA targets, and a biogenesis factor and/or possible translational regulator of targets in the CSR-1  
533 and WAGO 22G-RNA pathways.

534 We first identified a link between NHL-2 and the CSR-1 pathway by genetic and phenotypic  
535 studies, in which loss of CSR-1 pathway factors enhanced the aggregation of diakinetoc oocyte  
536 chromosomes in *nhl-2(ok818)* mutants. Loss of *nhl-2* also led to increased levels of H3K9me2 in  
537 pachytene germline nuclei and a spreading of this heterochromatin modification onto autosomes, where  
538 it is not normally observed. This phenotype is consistent with loss of CSR-1 pathway members,  
539 providing another phenotypic link between NHL-2 and the CSR-1 pathway. At this time, we do not  
540 entirely understand why this phenotype emerges in *nhl-2* or *csr-1* pathway mutants. It is possible that  
541 CSR-1 is not properly recruited to its target genes, due to mis-regulation of CSR-1 target transcripts in  
542 *nhl-2(ok818)* mutants. This, in turn, could disrupt the formation or maintenance of euchromatin at these  
543 loci and allow for the mis-direction of chromatin modifiers throughout the genome, as observed in *csr-*  
544 *1* mutants (Christopher Wedeles and Julie Claycomb, unpublished results). This leads to the aberrant  
545 accumulation of histone modifications throughout the genome, which could impact chromosome  
546 structure. Future ChIP-seq studies for histone modifications and CSR-1 recruitment in *nhl-2(ok818)*  
547 mutants will enable us to address this possibility. Alternatively, and based on the GO analysis, this  
548 chromosome organization defect could result indirectly from alterations in the levels of key transcripts  
549 associated with chromosome organization and metabolism, as has been proposed for CSR-1 (Gerson-  
550 Gurwitz, et al., 2016).

551 It was somewhat surprising to observe little correlation between the genes depleted of 22G-  
552 RNAs and genes with altered mRNA levels in *nhl-2(ok818)* mutants. Based on the known regulatory  
553 functions of these pathways we expected there would be a slight decrease in the level of CSR-1 target  
554 genes for which the 22G-RNAs were depleted, and an increase in the set of genes targeted by WAGO-1  
555 or HRDE-1 for which the 22G-RNAs were depleted. Instead, we observed little change in the steady-

556 state levels of transcripts with depleted 22G-RNAs, indicating that NHL-2 is involved in the translation  
557 of these genes, or that there is a different role for NHL-2 with regard to these genes in the 22G-RNA  
558 pathways.

559 The lack of correlation between mRNAs with altered levels and changes in 22G-RNAs raises  
560 another possibility: that NHL-2 is mainly involved mainly in the biogenesis of a subset of the 22G-  
561 RNAs. This model seems plausible for several reasons. First, DRH-3 and NHL-2 physically interact by  
562 co-IP. Second, our metagene analysis of the distribution of 22G-RNAs along the length of target  
563 mRNA transcripts is similar to the pattern observed for *drh-3(ne4253)* mutants, in which the 22G-  
564 RNAs are reduced along the length of the gene body, with most significant decreases present at the 5'  
565 end of the transcript. This pattern is consistent with a role for NHL-2 in the processivity or activity of  
566 the RdRP complex on a subset of CSR-1 targets (Fig. 8). The RNA binding activity of NHL-2 points to  
567 a model whereby NHL-2 could help to identify particular mRNAs as candidates for 22G-RNA  
568 synthesis. Furthermore, because NHL-2 also associates with CSR-1 and HRDE-1 as well as DRH-3, it  
569 could also act as a chaperone required efficient handoff of 22G-RNAs from the RdRP complex to the  
570 Argonaute (Fig. 8).

571 This potential role for NHL-2 with the RdRP complex is noteworthy for several reasons. First,  
572 because TRIM/NHL proteins have thus far only been implicated in the effector step of miRNA  
573 pathways, this is the first indication that NHL-2 (and thus TRIM/NHL proteins) could also be involved  
574 in the biogenesis of endo-siRNAs. Second, we still have relatively little insight into the factors that  
575 route particular transcripts into the 22G-RNA pathways, and NHL-2 provides an attractive candidate  
576 for one such factor. Third, the role for NHL-2 in biogenesis of a subset of germline 22G-RNAs and the  
577 effector steps of somatic miRNAs demonstrate differential roles for this intriguing protein in the

578 germline versus soma, and points to differences in protein binding partners in each of these tissues that  
579 should be examined further.

580 Notably, many of the up-regulated genes in *nhl-2(ok818)* mutants were the targets of 22G-  
581 RNAs, yet these genes did not display alterations in the levels of 22G-RNAs. These data point to a role  
582 for NHL-2 in regulating transcript stability, in cooperation with the WAGOs, and in opposition to  
583 CSR-1, and suggest a combinatorial regulatory mechanism that engages both small RNA pathways and  
584 *bona fide* RBPs such as NHL-2. The fact that *nhl-2(ok818)* mutants display temperature dependent  
585 fertility defects is consistent with several small RNA pathway factors, including both the  
586 piRNA/WAGO and the CSR-1 pathways and points to NHL-2 as a co-factor and/or co-regulator  
587 required for optimal pathway activity under stressful conditions. Although NHL-2 was not identified  
588 previously as a factor in the piRNA or 22G-RNA pathways, our results exemplify the power of  
589 synthetic genetic screens to identify accessory factors involved in the optimal function these pathways.

590 In light of our data, we propose that NHL-2 acts as a hub of gene regulation, where it works  
591 cooperatively with core factors in a diverse set of pathways that are central to both somatic and  
592 germline gene regulation (Fig.8). NHL-2 localizes to several ribonucleoprotein structures involved in  
593 RNA regulation, including P granules in the germline, CGH-1 granules in the gonad core, and  
594 cytoplasmic P bodies in the soma, placing it in key cellular positions to regulate multiple facets of gene  
595 expression and RNA metabolism throughout development. For instance, P granules and related Mutator  
596 Foci (to which NHL-2 does not appear to localize) are thought to be important sites for the synthesis of  
597 22G-RNAs and 22G-RNA-mediated gene regulation, as RdRP components and Argonautes, including  
598 CSR-1, WAGO-1, and HRDE-1 also localize to these sites (Phillips, et al., 2012; Claycomb, et al.,  
599 2009). CGH-1 granules of the gonad core have a complex interplay with P granules and are enriched

600 for translational regulators, including CGH-1 and IFET-1. The localization of NHL-2 to both P and  
601 CGH-1 granules in the germline supports the observation that NHL-2 and CGH-1 regulate the stability  
602 of a shared set of germline/oogenesis transcripts, and opens the possibility that NHL-2 and CGH-1  
603 could regulate the translation of a shared set of targets. The intrinsic RNA binding capacity of NHL-2  
604 via its NHL domain also makes it plausible that NHL-2 could regulate its own set of target mRNAs,  
605 independent of small RNA pathways or CGH-1. In fact, we observed that a large number of non-  
606 gonadal transcripts are regulated, both positively and negatively, in an NHL-2-dependent manner, and  
607 these transcripts are a separate group from those targeted by 22G-RNAs or CGH-1. Ultimately,  
608 quantitative proteomic studies, ribosome profiling in *nhl-2(ok818)* mutants, and NHL-2 RNA-IP or  
609 CLIP-seq experiments will enable us to identify the full repertoire of mechanisms of NHL-2 regulation.

610

## 611 **CONCLUSIONS**

612 In conclusion, we characterized the roles of NHL-2 in the germline and showed it localizes to P  
613 granules and impacts a subset of 22G-RNAs in both the CSR-1 and WAGO/HRDE pathways. This  
614 germline role in small RNA biogenesis is distinct from its role in the miRNA pathway in the soma, and  
615 implicates NHL-2 in RdRP activity in the germline. Interestingly, also NHL-2 was required for the  
616 nuclear RNAi pathway, suggesting that NHL-2 is a promiscuous co-factor of multiple distinct, but  
617 related small RNA pathways. NHL-2 displays intrinsic RNA binding ability via its NHL domain and  
618 thus is capable of binding and regulating the stability or translation of a large number of germline  
619 transcripts in a small RNA-independent manner. NHL-2 may exemplify a new class of co-factor that is  
620 required for optimal activity of small RNA pathways (both miRNA and 22G-RNA pathways).  
621 Although this type of co-factor appears to be extremely important for the fidelity and robustness of

622 developmental gene expression programs, additional examples of such co-factors are not likely to be  
623 identified by forward genetic screens, but may be revealed through similar screens in sensitized  
624 backgrounds. Overall, our study highlights the complex roles of the TRIM-NHL protein NHL-2 and  
625 lays the foundation for deeper mechanistic insights into how these versatile and conserved proteins act  
626 to regulate gene expression in various tissues.

627

## 628 **EXPERIMENTAL PROCEDURES**

### 629 **Worm Strains**

630 Strains used in this study were Bristol N2 as the wild-type, PRB310 (*nhl-2(ok818)*), YY186 (*nrde-*  
631 *2(gg091)*) and WM49 (*rde-4(ne301)*). Some strains were obtained from the *C. elegans* Genetics Centre  
632 (CGC, USA) and cultured under standard conditions (Brenner, 1974).

633

### 634 **RNAi**

635 RNAi was performed using the feeding method (Timmons and Fire, 1998). Each bacterial feeding  
636 clone was grown overnight in 2xTY media with 100µg/ml ampicillin and seeded onto NGM plates with  
637 100µg/ml ampicillin and 4mM IPTG. Approximately 10 synchronized L1 animals of each strain were  
638 then pipetted onto each plate.

639

### 640 **Brood Size Assay, Transgenerational and Mortal germline assays**

641 Brood size assays were performed on animals fed *E. coli* OP50 or bacteria expressing RNAi clones.  
642 Synchronized populations of each strain were grown at 20°C and 25°C until the fourth larval stage (L4)  
643 and then individual L4 animals were then placed onto pre-seeded NGM plates and returned to their

644 respective temperatures. Animals were then transferred to new plates every 12 hours and plates were  
645 scored for progeny after 48 hours. This process was repeated until animals failed to lay new progeny.  
646 Total progeny included viable progeny and unhatched embryos, while embryonic lethality was scored  
647 separately as unhatched embryos. For transgenerational brood size analysis and Mrt assays, wild-type  
648 and homozygote *nhl-2(ok818)* worms were grown at 20°C for at least 5 generations and then shifted to  
649 25°C as L1. In the transgenerational assay, F1 and subsequent generations were grown at either 25°C  
650 or 20°C for successive generations and total brood size and embryonic lethality scored. For the Mrt  
651 assay animals were maintained at 25°C and six L2/3 animals were transferred at each generation to  
652 individual plates and counting all progeny.

653

#### 654 **Nuclear RNAi assay**

655 The *lir-1* RNAi clone was obtained from the ORFome RNAi library and sequence to confirm the  
656 identity. Synchronised L1 worms were plated on *lir-1* or control RNAi plates and grown at 25°C for 72  
657 h and then inspected for arrested or dead worms.

658

#### 659 **Gonad Dissection and Immunostaining**

660 One-day-old adults were anesthetized (0.01% tetramisole) and gonads dissected, snap frozen in liquid  
661 nitrogen and processed as described in (Navarro et al., 2001). Rabbit anti-NHL-2 antibodies was raised  
662 to the peptide RHESPATSTNNTQNS (GL Biochem, China). Anti-NHL-2 and anti-CGH-1 primary  
663 antibodies were incubated overnight at 4°C and secondary antibodies for 2 hours at 20°C. Slides were  
664 washed twice in PBS/ 0.1% Tween-20 for 10 minutes at 20°C and mounted for imaging using Dako  
665 Fluorescent Mounting Media (Dako, Denmark). Fluorescent images were acquired using an inverted



666 Olympus IX81 x 2-UCB microscope (Olympus, Tokyo, Japan) attached to an X-cite series 120Q  
667 fluorescent light box.

668

### 669 **Immunoprecipitation and GST Pull-down Assay**

670 Full-length NHL-2 coding sequence was cloned into modified pDEST-Magic vector pTH6838,  
671 resulting in an N-terminally-tagged NHL-2 expression construct. *Escherichia coli* C41 cells (Lucigen)  
672 were transformed using NHL-2 expression construct or empty plasmid for tag-only control  
673 experiments. Protein expression was induced by adding IPTG (1mM final) to overnight log phase cell  
674 culture at 37°C, and continued for 3.5-4 hours. Cell lysates were prepared by sonication, and the added  
675 to GST resin for binding. After washing off non-specific binders, tagged NHL-2 or GST protein was  
676 eluted off the resin using 250 mM NaCl, 50 mM Tris-HCl (pH 8.8), 30 mM reduced glutathione, 10  
677 mM BME and 20% Glycerol. Protein concentration and purity were estimated by SDS-PAGE using  
678 standard procedure. Details for NHL-2 expression and purification processes can be found elsewhere  
679 (Ray, et al., 2017; Ray, et al., 2013).

680

681 *C. elegans* lysate was prepared from gravid wild-type adults in 100 mM NaCl, 50 mM Sodium  
682 phosphate (pH 7.5), 0.05% triton and a combination of protease (Roche) and phosphatase inhibitors.  
683 For each binding experiment, 5 mg of worm lysate was pre-cleared using 25 ul of GST resin. 8 ug of  
684 GST-tagged NHL-2 or 4 ug of GST protein was added to pre-cleared lysate containing fresh 25 ul of  
685 GST resin in 1 ml final reaction volume. The mixture was incubated at 4°C for 3 hours. Proteins  
686 unbound to the resin were removed by washing the resin 5 times with 50 ul 100 mM NaCl, 50 mM  
687 sodium phosphate, 0.05% triton buffer. Bound proteins were eluted by adding 50 ul of 1X SDS gel

688 loading buffer to the resin followed by heating the samples at 70°C for 1 min. Candidate NHL-2  
689 binding partners were separated on SDS- PAGE and probed by western blots using published *C.*  
690 *elegans* antibodies. Tubulin was used for loading controls between GST-NHL-2 and tag only  
691 experiments.

692

### 693 **Protein Expression, RNAcomplete and Fluorescence Anisotropy**

694 RNA pool generation, RNAcomplete pulldown assays and microarray hybridizations were performed as  
695 previously described (Ray, et al., 2017; Ray, et al., 2013; Ray, et al., 2009). Briefly, NHL domain of  
696 NHL-2 (residues 625-1032) was expressed as a GST-tagged fusion protein using the pGEX vector  
697 (pTH6838) (GE Healthcare). GST-NHL-2 (20 pmoles) and RNA pool (1.5 nmoles) were incubated in  
698 1 mL of Binding Buffer (20 mM HEPES pH 7.8, 80 mM KCl, 20 mM NaCl, 10% glycerol, 2 mM  
699 DTT, 0.1 µg/µL BSA) containing 20 µL glutathione sepharose 4B (GE Healthcare) beads (pre-washed  
700 3 times in Binding Buffer) for 30 minutes at 4°C, and subsequently washed four times for two minutes  
701 with Binding Buffer at 4°C. One-sided Z-scores were calculated for the motifs as described previously  
702 (Ray, et al., 2013).

703 For fluorescence anisotropy assays, *Escherichia coli* BL21(DE3) expressing GST-NHL-2 (729-  
704 1032) were grown to an  $OD_{600} = 0.6-0.8$  at 37°C and induced with the addition of 0.5 mM IPTG for 16  
705 hr at 23°C. Cells were resuspended in lysis buffer (100 mM Tris.Cl pH 7.0, 5 mM EDTA, 5 mM DTT  
706 supplemented with 1 x 'cOmplete' Protease Inhibitor Cocktail (Roche), passed through a French press  
707 4 times at 16,000-18,000 psi. and the lysate clarified by centrifugation at 8,000 g for 30 minutes. The  
708 GST-NHL-2 fusion protein was purified using a 5 mL GStrap FF based on the manufactures  
709 specification (GE healthcare). Alterations to the protocol included washing the column 5 x volumes of

710 binding buffer (1 x PBS pH 7.3) containing an additional 2 M NaCl to remove any DNA and RNA  
711 bound to NHL-2, followed by 5 column volumes of binding buffer. To elute the bound protein, the  
712 column was washed with elution buffer (1x PBS, 10mM reduced glutathione pH 8.0) and eluted  
713 fractions run on a SDS-PAGE gel to determine which fractions GST-NHL-2 eluted in, these fractions  
714 were then pooled and concentrated to be then further purified using size exclusion on the HiLoad 16/60  
715 Superdex 200. The NHL domain purity was >95% by SDS-PAGE and was quantitated by OD<sub>280</sub> using  
716 an extinction coefficient of 61935 M<sup>-1</sup>cm<sup>-1</sup> (Pace et al., 1995).

717 To examine the RNA-binding ability of the NHL domain, a 12-point serial dilution (0-52.81  
718 μM) of GST and GST-NHL-2 NHL domain was incubated with 1 nM 5'-Fluorescein labelled 17 mer  
719 poly-U single-stranded RNA (Dharmacon GE, USA) in assay buffer (50 mM NaCl, 20 mM NaPO<sub>4</sub>, 2  
720 mM MgCl<sub>2</sub>, 1 mM DTT, 10% glycerol pH 7.4) for 15 min at room temperature in 96-well non-binding  
721 black plates (Greiner Bio-One). Fluorescence anisotropy was measured in triplicate using PHERAstar  
722 FS (BMG) with FP 488-520-520 nm filters. Data were corrected for anisotropy of RNA alone samples,  
723 and then fitted to a one-site binding model using the Equation,  $A = (A_{\max} [L]) / (K_D + [L])$ , where A is the  
724 corrected fluorescence anisotropy;  $A_{\max}$  is maximum binding fluorescence anisotropy signal, [L] is the  
725 NHL concentration, and  $K_D$  is the dissociation equilibrium constant.  $A_{\max}$  and  $K_D$  were used as fitting  
726 parameters and nonlinear regression was performed using SigmaPlot 13.0.

727

### 728 **Small RNA Cloning and Data Analysis**

729 Total RNA was collected from wild-type and *nhl-2(ok818)* mutants that were grown to gravid  
730 adulthood at either 20°C or 25°C on OP50 *E. coli*. We isolated small RNAs and prepared libraries for  
731 Illumina sequencing using a previously described cloning strategy (Tu, et al., 2015; Gu, et al., 2009).

732 The only minor modification to these protocols was that we used 0.1X the normal amount of Tobacco  
733 Acid Pyrophosphatase (enabling us to capture a greater proportion of miRNAs, while still sufficiently  
734 recovering 22G-RNAs). Small RNA analysis was conducted using custom Shell and Perl (5.10.0)  
735 scripts (Tu, et al., 2015). The reference genome of *C. elegans* and genomic annotations were  
736 downloaded from WormBase (Release WS230) (Yook, et al., 2012). The snoRNAs annotated in  
737 GenBank were also included in the category of non-coding RNAs (ncRNAs). The sequences of pre-  
738 miRNAs and mature miRNAs were fetched from miRBase (Release 19). After removing the barcodes  
739 from small RNA-seq reads for each sample, the insert size were extracted by allowing at most one  
740 mismatch in the first 6 nt of the 3' linker (CTGTAG). We first excluded the reads that could be aligned  
741 to the ncRNAs, and then aligned the remaining reads to the genome using Bowtie (Langmead, et al.,  
742 2009) without mismatches. Small RNA abundance were normalized to the sequencing depth (the sum  
743 of genome-mapping and junction-mapping reads but those known ncRNAs) as reads per million (rpm).  
744 We used the same lists of CSR-1 targets, WAGO-1 targets, etc. as in (Tu, et al., 2015), and the same  
745 criteria to define the genes depleted of 22G-RNAs in *nhl-2(ok818)* mutants, i.e., at least 2-fold  
746 depletion in mutants than wild-type and at least 10 rpm reads in wild-type. The significance of the  
747 overlap between gene sets was calculated by hypergeometric test. The miRNA targets were predicted  
748 using TargetScan (Lewis, et al., 2005).

749

#### 750 **mRNA-Seq**

751 Total RNA was extracted from triplicate samples of wild-type and *nhl-2(ok818)* mutants that were  
752 grown to gravid adulthood at either 20°C or 25°C on OP50 *E. coli*. mRNA-seq libraries were generated  
753 and sequenced at the Donnelly Sequencing Centre (University of Toronto) using the Illumina Tru-Seq

754 Stranded mRNA Library Construction Kit and the HiSeq2500 sequencer. The mRNA-seq reads were  
755 mapped to the reference genome by Tophat (Trapnell, et al., 2009) with default parameters. For each  
756 gene, we counted the number of the 22G-RNA reads that are antisense to the corresponding gene  
757 transcript. With the counts, edgeR was used to integrate the three replicates of *nhl-2* mutants versus the  
758 three replicates of wild-type. Then, a gene is called to be depleted of 22G-RNAs in *nhl-2* mutants if the  
759 corresponding FDR and fold-change (FC) by edgeR satisfy  $FDR < 0.05$  and  $FC < \frac{1}{2}$ , and the gene has  
760 at least 10 reads per million (rpm) antisense 22G-RNAs reads in at least one of three replicates of wild-  
761 type.

762

### 763 **ACCESSION NUMBERS**

764 All small RNA and mRNA Illumina sequencing data have been submitted to the NCBI's Sequence  
765 Read Archive (SRA), and are included under project accession number SRP115391.

766

### 767 **AUTHOR CONTRIBUTIONS**

768 GMD, JMC, and PRB conceived of and designed all experiments. GMD analyzed brood sizes,  
769 performed germline imaging and phenotype quantification, characterized the NHL-2 antibody, and  
770 performed NHL-2 co-IP experiments with assistance from JWTA. RNC, MJC, and JAW performed  
771 and analyzed the anisotropy RNA-binding experiments. DR performed the RNAcompete assay. MAF  
772 isolated small RNA and mRNA fractions for Illumina sequencing and cloned the small RNA Illumina  
773 libraries. MZW performed DRH-3 co-IP experiments in Fig. S6. ST and ZW performed bioinformatics  
774 analysis. JMC and PRB wrote the manuscript with input from all authors.

775

776 **ACKNOWLEDGMENTS**

777 Strains were provided by the *Caenorhabditis Genetics Center*, which is funded by the National  
778 Institutes of Health Office of Research Infrastructure Programs (P40 OD010440). We thank Inga  
779 Loedige for generously providing the GST-NHL-2 NHL domain construct used for fluorescence  
780 anisotropy. We thank Christopher Wedeles for critical reading of the manuscript. G.M.D was supported  
781 by a Monash University PhD scholarship. Q.M and TRH were funded by CIHR (grant MOP-125894),  
782 J.M.C. was funded by the Canada Research Chairs program, the CIHR (grants MOP-274660 and CAP-  
783 262134), and the University of Toronto Department of Molecular Genetics and Connaught Fund. S. T.  
784 and Z.W. were partly funded by the NIH grant HD078253. P.R.B. was funded by the National Health  
785 and Medical Research Council of Australia (NHMRC) (grant number 0606575).

786

787 **SUPPLEMENTAL INFORMATION**

788 Supplemental Information includes seven Supplemental Figures and three Supplemental Tables.

789 Figure S1. Comparison of representative TRIM-NHL proteins, Related to Figure 1.

790 Figure S2. The NHL-2 antibody is specific, Related to Figures 1, 2.

791 Figure S3. Synthetic brood size reduction and embryonic lethality between *nhl-2(ok818)* and the CSR-1  
792 pathway, Related to Figure 2.

793 Figure S4. Length and first nucleotide distribution of small RNAs in wild-type and *nhl-2(ok818)*  
794 mutants at 20°C.

795 Figure S5. Length and first nucleotide distribution of small RNAs in wild-type and *nhl-2(ok818)*  
796 mutants at 25°C.

797 Figure S6. Comparison of abundance (in rpm) for different categories of small RNAs in wild-type and  
798 *nhl-2(ok818)* mutants at 20°C vs. 25°C.

799 Figure S7. The distribution of 22G-RNAs is reduced at the 5'-end of CSR-1 targets in *nhl-2(ok818)*  
800 relative wild-type control at 25°C. Related to Figure 4.

801 Figure S8. The RdRP complex is intact in *nhl-2(ok818)* mutants, Related to Figures 2, 4.

802 Table S1: Small RNA sequencing statistics of four samples in *nhl-2(ok818)* mutants and wild-type  
803 animals at 25°C or 20°C, Related to Figures 4, 6.

804 Table S2: Genes altered in small RNA and mRNA sequencing datasets generated and investigated in  
805 this paper, Related to Figures 4, 6.

806 Table S3: Master table of small RNA and mRNA-seq data used in this study.

807

808 **REFERENCES**

- 809 Aoki, K., Moriguchi, H., Yoshioka, T., Okawa, K., and Tabara, H. (2007). In vitro analyses of the  
810 production and activity of secondary small interfering RNAs in *C. elegans*. *EMBO J* 26, 5007-19.
- 811 Arnold, A., Rahman, M.M., Lee, M.C., Muehlhaeusser, S., Katic, I., Gaidatzis, D., Hess, D., Scheckel,  
812 C., Wright, J.E., Stetak, A., et al. (2014). Functional characterization of *C. elegans* Y-box-binding  
813 proteins reveals tissue-specific functions and a critical role in the formation of polysomes. *Nucleic  
814 acids research* 42, 13353-69.
- 815 Ashe, A., Sapetschnig, A., Weick, E.M., Mitchell, J., Bagijn, M.P., Cording, A.C., Doebley, A.L.,  
816 Goldstein, L.D., Lehrbach, N.J., Le Pen, J., et al. (2012). piRNAs can trigger a multigenerational  
817 epigenetic memory in the germline of *C. elegans*. *Cell* 150, 88-99.
- 818 Audhya, A., Hyndman, F., McLeod, I.X., Maddox, A.S., Yates, J.R., 3rd, Desai, A., and Oegema, K.  
819 (2005). A complex containing the Sm protein CAR-1 and the RNA helicase CGH-1 is required for  
820 embryonic cytokinesis in *Caenorhabditis elegans*. *J Cell Biol* 171, 267-79.
- 821 Billi, A.C., Fischer, S.E., and Kim, J.K. (2014). Endogenous RNAi pathways in *C. elegans*.  
822 *WormBook*, 1-49.
- 823 Boag, P.R., Atalay, A., Robida, S., Reinke, V., and Blackwell, T.K. (2008). Protection of specific  
824 maternal messenger RNAs by the P body protein CGH-1 (Dhh1/RCK) during *Caenorhabditis elegans*  
825 oogenesis. *J Cell Biol* 182, 543-57.
- 826 Boag, P.R., Nakamura, A., and Blackwell, T.K. (2005). A conserved RNA-protein complex component  
827 involved in physiological germline apoptosis regulation in *C. elegans*. *Development* 132, 4975-86.
- 828 Boshier, J.M., Dufourcq, P., Sookhareea, S., and Labouesse, M. (1999). RNA interference can target  
829 pre-mRNA: consequences for gene expression in a *Caenorhabditis elegans* operon. *Genetics* 153, 1245-



830 56.

831 Buckley, B.A., Burkhart, K.B., Gu, S.G., Spracklin, G., Kershner, A., Fritz, H., Kimble, J., Fire, A.,  
832 and Kennedy, S. (2012). A nuclear Argonaute promotes multigenerational epigenetic inheritance and  
833 germline immortality. *Nature* 489, 447-51.

834 Cecere, G., Hoersch, S., O'Keeffe, S., Sachidanandam, R., and Grishok, A. (2014). Global effects of  
835 the CSR-1 RNA interference pathway on the transcriptional landscape. *Nature structural & molecular*  
836 *biology* 21, 358-65.

837 Claycomb, J.M., Batista, P.J., Pang, K.M., Gu, W., Vasale, J.J., van Wolfswinkel, J.C., Chaves, D.A.,  
838 Shirayama, M., Mitani, S., Ketting, R.F., et al. (2009). The Argonaute CSR-1 and its 22G-RNA  
839 cofactors are required for holocentric chromosome segregation. *Cell* 139, 123-34.

840 Conine, C.C., Moresco, J.J., Gu, W., Shirayama, M., Conte, D., Jr., Yates, J.R., 3rd, and Mello, C.C.  
841 (2013). Argonautes promote male fertility and provide a paternal memory of germline gene expression  
842 in *C. elegans*. *Cell* 155, 1532-44.

843 Davis, G.M., Low, W.Y., Anderson, J.W.T., and Boag, P.R. (2017). Exploring Potential Germline-  
844 Associated Roles of the TRIM-NHL Protein NHL-2 Through RNAi Screening. *G3* 7, 3251-3256.

845 de Albuquerque, B.F., Placentino, M., and Ketting, R.F. (2015). Maternal piRNAs Are Essential for  
846 Germline Development following De Novo Establishment of Endo-siRNAs in *Caenorhabditis elegans*.  
847 *Dev Cell* 34, 448-56.

848 Edwards, T.A., Wilkinson, B.D., Wharton, R.P., and Aggarwal, A.K. (2003). Model of the brain tumor-  
849 Pumilio translation repressor complex. *Genes Dev* 17, 2508-13.

850 Gerson-Gurwitz, A., Wang, S., Sathe, S., Green, R., Yeo, G.W., Oegema, K., and Desai, A. (2016). A  
851 Small RNA-Catalytic Argonaute Pathway Tunes Germline Transcript Levels to Ensure Embryonic

- 852 Divisions. *Cell* 165, 396-409.
- 853 Gu, W., Shirayama, M., Conte, D., Jr., Vasale, J., Batista, P.J., Claycomb, J.M., Moresco, J.J.,  
854 Youngman, E.M., Keys, J., Stoltz, M.J., et al. (2009). Distinct argonaute-mediated 22G-RNA pathways  
855 direct genome surveillance in the *C. elegans* germline. *Mol Cell* 36, 231-44.
- 856 Hammell, C.M., Lubin, I., Boag, P.R., Blackwell, T.K., and Ambros, V. (2009). *nhl-2* Modulates  
857 microRNA activity in *Caenorhabditis elegans*. *Cell* 136, 926-38.
- 858 Hyenne, V., Desrosiers, M., and Labbe, J.C. (2008). *C. elegans* Brat homologs regulate PAR protein-  
859 dependent polarity and asymmetric cell division. *Dev Biol* 321, 368-78.
- 860 Ikeda, K., and Inoue, S. (2012). TRIM proteins as RING finger E3 ubiquitin ligases. *Advances in*  
861 *experimental medicine and biology* 770, 27-37.
- 862 Karp, X., and Ambros, V. (2012). Dauer larva quiescence alters the circuitry of microRNA pathways  
863 regulating cell fate progression in *C. elegans*. *Development* 139, 2177-86.
- 864 Kudryashova, E., Kudryashov, D., Kramerova, I., and Spencer, M.J. (2005). Trim32 is a ubiquitin  
865 ligase mutated in limb girdle muscular dystrophy type 2H that binds to skeletal muscle myosin and  
866 ubiquitinates actin. *Journal of molecular biology* 354, 413-24.
- 867 Langmead, B., Trapnell, C., Pop, M., and Salzberg, S.L. (2009). Ultrafast and memory-efficient  
868 alignment of short DNA sequences to the human genome. *Genome biology* 10, R25.
- 869 Laver, J.D., Li, X., Ray, D., Cook, K.B., Hahn, N.A., Nabeel-Shah, S., Kekis, M., Luo, H., Marsolais,  
870 A.J., Fung, K.Y., et al. (2015). Brain tumor is a sequence-specific RNA-binding protein that directs  
871 maternal mRNA clearance during the *Drosophila* maternal-to-zygotic transition. *Genome biology* 16,  
872 94.
- 873 Lewis, B.P., Burge, C.B., and Bartel, D.P. (2005). Conserved seed pairing, often flanked by

874 adenosines, indicates that thousands of human genes are microRNA targets. *Cell* 120, 15-20.

875 Loedige, I., Gaidatzis, D., Sack, R., Meister, G., and Filipowicz, W. (2013). The mammalian TRIM-  
876 NHL protein TRIM71/LIN-41 is a repressor of mRNA function. *Nucleic acids research* 41, 518-32.

877 Loedige, I., Jakob, L., Treiber, T., Ray, D., Stotz, M., Treiber, N., Hennig, J., Cook, K.B., Morris, Q.,  
878 Hughes, T.R., et al. (2015). The Crystal Structure of the NHL Domain in Complex with RNA Reveals  
879 the Molecular Basis of Drosophila Brain-Tumor-Mediated Gene Regulation. *Cell reports* 13, 1206-20.

880 Loedige, I., Stotz, M., Qamar, S., Kramer, K., Hennig, J., Schubert, T., Loffler, P., Langst, G., Merkl,  
881 R., Urlaub, H., et al. (2014). The NHL domain of BRAT is an RNA-binding domain that directly  
882 contacts the hunchback mRNA for regulation. *Genes Dev* 28, 749-64.

883 McJunkin, K., and Ambros, V. (2017). A microRNA family exerts maternal control on sex  
884 determination in *C. elegans*. *Genes Dev* 31, 422-437.

885 Nakamura, M., Ando, R., Nakazawa, T., Yudazono, T., Tsutsumi, N., Hatanaka, N., Ohgake, T.,  
886 Hanaoka, F., and Eki, T. (2007). Dicer-related drh-3 gene functions in germ-line development by  
887 maintenance of chromosomal integrity in *Caenorhabditis elegans*. *Genes to cells : devoted to molecular*  
888 *& cellular mechanisms* 12, 997-1010.

889 Neumuller, R.A., Betschinger, J., Fischer, A., Bushati, N., Poernbacher, I., Mechtler, K., Cohen, S.M.,  
890 and Knoblich, J.A. (2008). Mei-P26 regulates microRNAs and cell growth in the *Drosophila* ovarian  
891 stem cell lineage. *Nature* 454, 241-5.

892 Ni, J.Z., Kalinava, N., Chen, E., Huang, A., Trinh, T., and Gu, S.G. (2016). A transgenerational role of  
893 the germline nuclear RNAi pathway in repressing heat stress-induced transcriptional activation in *C.*  
894 *elegans*. *Epigenetics Chromatin* 9, 3.

895 Ortiz, M.A., Noble, D., Sorokin, E.P., and Kimble, J. (2014). A new dataset of spermatogenic vs.

896 oogenic transcriptomes in the nematode *Caenorhabditis elegans*. *G3* 4, 1765-72.

897 Phillips, C.M., Brown, K.C., Montgomery, B.E., Ruvkun, G., and Montgomery, T.A. (2015). piRNAs  
898 and piRNA-Dependent siRNAs Protect Conserved and Essential *C. elegans* Genes from Misrouting  
899 into the RNAi Pathway. *Dev Cell* 34, 457-65.

900 Phillips, C.M., Montgomery, B.E., Breen, P.C., Roovers, E.F., Rim, Y.S., Ohsumi, T.K., Newman,  
901 M.A., van Wolfswinkel, J.C., Ketting, R.F., Ruvkun, G., et al. (2014). MUT-14 and SMUT-1 DEAD  
902 box RNA helicases have overlapping roles in germline RNAi and endogenous siRNA formation. *Curr*  
903 *Biol* 24, 839-44.

904 Phillips, C.M., Montgomery, T.A., Breen, P.C., and Ruvkun, G. (2012). MUT-16 promotes formation  
905 of perinuclear mutator foci required for RNA silencing in the *C. elegans* germline. *Genes Dev* 26,  
906 1433-44.

907 Ray, D., Ha, K.C.H., Nie, K., Zheng, H., Hughes, T.R., and Morris, Q.D. (2017). RNAcompete  
908 methodology and application to determine sequence preferences of unconventional RNA-binding  
909 proteins. *Methods* 118-119, 3-15.

910 Ray, D., Kazan, H., Chan, E.T., Pena Castillo, L., Chaudhry, S., Talukder, S., Blencowe, B.J., Morris,  
911 Q., and Hughes, T.R. (2009). Rapid and systematic analysis of the RNA recognition specificities of  
912 RNA-binding proteins. *Nat Biotechnol* 27, 667-70.

913 Ray, D., Kazan, H., Cook, K.B., Weirauch, M.T., Najafabadi, H.S., Li, X., Gueroussov, S., Albu, M.,  
914 Zheng, H., Yang, A., et al. (2013). A compendium of RNA-binding motifs for decoding gene  
915 regulation. *Nature* 499, 172-7.

916 Reinke, V., Gil, I.S., Ward, S., and Kazmer, K. (2004). Genome-wide germline-enriched and sex-  
917 biased expression profiles in *Caenorhabditis elegans*. *Development* 131, 311-23.

- 918 Schwamborn, J.C., Berezikov, E., and Knoblich, J.A. (2009). The TRIM-NHL protein TRIM32  
919 activates microRNAs and prevents self-renewal in mouse neural progenitors. *Cell* 136, 913-25.
- 920 Sengupta, M.S., and Boag, P.R. (2012). Germ granules and the control of mRNA translation. *IUBMB*  
921 *life* 64, 586-94.
- 922 Seth, M., Shirayama, M., Gu, W., Ishidate, T., Conte, D., Jr., and Mello, C.C. (2013). The *C. elegans*  
923 CSR-1 argonaute pathway counteracts epigenetic silencing to promote germline gene expression. *Dev*  
924 *Cell* 27, 656-63.
- 925 She, X., Xu, X., Fedotov, A., Kelly, W.G., and Maine, E.M. (2009). Regulation of heterochromatin  
926 assembly on unpaired chromosomes during *Caenorhabditis elegans* meiosis by components of a small  
927 RNA-mediated pathway. *PLoS Genet* 5, e1000624.
- 928 Shirayama, M., Seth, M., Lee, H.C., Gu, W., Ishidate, T., Conte, D., Jr., and Mello, C.C. (2012).  
929 piRNAs initiate an epigenetic memory of nonself RNA in the *C. elegans* germline. *Cell* 150, 65-77.
- 930 Sonoda, J., and Wharton, R.P. (2001). *Drosophila* Brain Tumor is a translational repressor. *Genes Dev*  
931 15, 762-73.
- 932 Spike, C.A., Coetzee, D., Eichten, C., Wang, X., Hansen, D., and Greenstein, D. (2014). The TRIM-  
933 NHL protein LIN-41 and the OMA RNA-binding proteins antagonistically control the prophase-to-  
934 metaphase transition and growth of *Caenorhabditis elegans* oocytes. *Genetics* 198, 1535-58.
- 935 Spracklin, G., Fields, B., Wan, G., Becker, D., Wallig, A., Shukla, A., and Kennedy, S. (2017). The  
936 RNAi Inheritance Machinery of *Caenorhabditis elegans*. *Genetics* 206, 1403-1416.
- 937 Timmons, L., and Fire, A. (1998). Specific interference by ingested dsRNA. *Nature* 395, 854.
- 938 Tocchini, C., and Ciosk, R. (2015). TRIM-NHL proteins in development and disease. *Semin Cell Dev*  
939 *Biol* 47-48, 52-9.

940 Tocchini, C., Keusch, J.J., Miller, S.B., Finger, S., Gut, H., Stadler, M.B., and Ciosk, R. (2014). The  
941 TRIM-NHL protein LIN-41 controls the onset of developmental plasticity in *Caenorhabditis elegans*.  
942 PLoS Genet 10, e1004533.

943 Trapnell, C., Pachter, L., and Salzberg, S.L. (2009). TopHat: discovering splice junctions with RNA-  
944 Seq. Bioinformatics 25, 1105-11.

945 Tsukamoto, T., Gearhart, M.D., Spike, C.A., Huelgas-Morales, G., Mews, M., Boag, P.R., Beilharz,  
946 T.H., and Greenstein, D. (2017). LIN-41 and OMA Ribonucleoprotein Complexes Mediate a  
947 Translational Repression-to-Activation Switch Controlling Oocyte Meiotic Maturation and the Oocyte-  
948 to-Embryo Transition in *Caenorhabditis elegans*. Genetics 206, 2007-2039.

949 Tu, S., Wu, M.Z., Wang, J., Cutter, A.D., Weng, Z., and Claycomb, J.M. (2015). Comparative  
950 functional characterization of the CSR-1 22G-RNA pathway in *Caenorhabditis nematodes*. Nucleic  
951 acids research 43, 208-24.

952 Van Wolfswinkel, J.C., Claycomb, J.M., Batista, P.J., Mello, C.C., Berezikov, E., and Ketting, R.F.  
953 (2009). CDE-1 affects chromosome segregation through uridylation of CSR-1-bound siRNAs. Cell  
954 139, 135-48.

955 Voronina, E., Seydoux, G., Sassone-Corsi, P., and Nagamori, I. (2011). RNA Granules in Germ Cells.  
956 Cold Spring Harb Perspect Biol.

957 Wang, G., and Reinke, V. (2008). A *C. elegans* Piwi, PRG-1, regulates 21U-RNAs during  
958 spermatogenesis. Curr Biol 18, 861-7.

959 Wedeles, C.J., Wu, M.Z., and Claycomb, J.M. (2013a). A multitasking Argonaute: exploring the many  
960 facets of *C. elegans* CSR-1. Chromosome research : an international journal on the molecular,  
961 supramolecular and evolutionary aspects of chromosome biology 21, 573-86.

962 Wedeles, C.J., Wu, M.Z., and Claycomb, J.M. (2013b). Protection of germline gene expression by the  
963 *C. elegans* Argonaute CSR-1. *Dev Cell* 27, 664-71.

964 Wedeles, C.J., Wu, M.Z., and Claycomb, J.M. (2014). Silent no more: Endogenous small RNA  
965 pathways promote gene expression. *Worm* 3, e28641.

966 Weiser, N.E., Yang, D.X., Feng, S., Kalinava, N., Brown, K.C., Khanikar, J., Freeberg, M.A., Snyder,  
967 M.J., Csankovszki, G., Chan, R.C., et al. (2017). MORC-1 Integrates Nuclear RNAi and  
968 Transgenerational Chromatin Architecture to Promote Germline Immortality. *Dev Cell* 41, 408-423 e7.

969 Yi, Y.H., Ma, T.H., Lee, L.W., Chiou, P.T., Chen, P.H., Lee, C.M., Chu, Y.D., Yu, H., Hsiung, K.C.,  
970 Tsai, Y.T., et al. (2015). A Genetic Cascade of *let-7-ncl-1-fib-1* Modulates Nucleolar Size and rRNA  
971 Pool in *Caenorhabditis elegans*. *PLoS Genet* 11, e1005580.

972 Yook, K., Harris, T.W., Bieri, T., Cabunoc, A., Chan, J., Chen, W.J., Davis, P., de la Cruz, N., Duong,  
973 A., Fang, R., et al. (2012). WormBase 2012: more genomes, more data, new website. *Nucleic acids*  
974 *research* 40, D735-41.

975 Youngman, E.M., and Claycomb, J.M. (2014). From early lessons to new frontiers: the worm as a  
976 treasure trove of small RNA biology. *Frontiers in genetics* 5, 416.

977

978 **Figure 1. NHL-2 is required for fertility and is enriched in germline granules.** (A) Average brood  
979 size and (B) embryonic lethality of *nhl-2(ok818)* mutants compared to wild-type at 20°C, 23°C and  
980 25°C. Embryonic lethality is significantly different to wild-type animals at higher temperatures but not  
981 significantly different to wild-type at 20°C. Brood size is significantly lower across 20°C, 23°C and  
982 25°C when compared to wild-type animals. \*\*\*=P values <0.001, \* error bars represent standard error  
983 of mean. (n=5) (C) Representative images of DAPI stained diakinetoc oocytes showing abnormal  
984 chromosome morphology in *nhl-2(ok818)* when compared to wild-type animals. *nhl-2(ok818)*  
985 chromosomes show aggregation or greater than six chromosomal bodies. Scale bar 5µm, n=20 (D)  
986 Quantification of chromosomal defects in diakinetoc oocytes in wild-type and *nhl-2(ok818)* animals at  
987 25°C. (E) NHL-2 co-localizes with CGH-1 in P-granules (top panels, Surface) and gonadal core CGH-  
988 1 granules (bottom panels, Core). DAPI (blue), NHL-2 (red), CGH-1 (green). Scale bar 10µm.  
989 Immunostaining with affinity purified NHL-2 antibody was reduced to background in *nhl-2(ok818)*  
990 germlines (Fig. S2A).

991

992 **Figure 2. NHL-2 genetically interacts with the CSR-1 22G-RNA pathway.** (A) Representative  
993 images of DAPI stained oocyte diakinetoc chromosomes showing abnormal chromosome morphology  
994 when *drh-3*, *csr-1*, *ekl-1* and *cde-1* were knocked down by RNAi in wild-type and *nhl-2(ok818)*  
995 animals. Scale bar 5µm, n=90 oocytes. (B, C, D & E) Chromosomes from each phenotype were binned  
996 in one of four categories: normal, oocytes with >6 chromosomal bodies, aggregated chromosomes, and  
997 enhanced aggregation (where aggregation exceeded that observed in wild-type animals). (F) Pachytene  
998 region of dissected adult male germlines stained with DAPI (red) and H3K9me2 (green) in wild-type  
999 males treated with *drh-3(RNAi)*, *csr-1(RNAi)* and *nhl-2(ok818)* mutants. Negative control wild-type



1000 male presented on the far left (WT XO) showing one strong signal of H3K9me2 (yellow arrowheads).  
1001 *drh-3(RNAi)*, *csr-1(RNAi)* and *nhl-2(ok818)* mutants display abnormal accumulation or distribution of  
1002 H3K9me2. Scale bar 50 $\mu$ m, n=30 germlines. **(G)** Quantification of H3K9me2 distribution in germ cells  
1003 from each phenotype scored as normal, elevated, or dispersed from each phenotype. *nhl-2(ok818)*  
1004 mutants display similar amounts of germ cells with abnormal H3K9me2 markings.

1005

1006 **Figure 3. Analysis of nuclear RNAi pathways in *nhl-2(ok818)* mutants.** **(A)** The nuclear RNAi  
1007 pathway silence somatic targets. dsRNA targeting the *lir-1* mRNA leads to the generation of 22G small  
1008 RNAs in the cytoplasm and the nuclear RNAi pathway uses these 22G RNAs to target the endogenous  
1009 *lir-1/let-26* locus for silencing. **(B)** *nhl-2(ok818)* worms are resistant to *lir-1* RNAi. Percent larval arrest  
1010 represents mean of two biological replicates  $\pm$  SD; n> 100. **(C)** *nhl-2(ok818)* worms display a mortal  
1011 germline phenotype at 25°C. Error bars indicate mean  $\pm$  SD, n=6. **(D)** Analysis of transgenerational  
1012 broad size and embryonic lethality **(E)** of wild-type and *nhl-2(ok818)* worms. \*\*\*\*=P values <0.0001,  
1013 \*\*\*=P values <0.0004, \*=P values <0.0418. Error bars indicate mean  $\pm$  SD, n=37.

1014

1015 **Figure 4. NHL-2 interacts physically with the components of the 22G-RNA pathway.** **(A)** Western  
1016 blot using anti-CSR-1 showing no variance between CSR-1 levels in wild-type animals (WT) and *nhl-*  
1017 *2(ok818)* mutants when equal amounts of protein are loaded. Tubulin is shown as a loading control  
1018 (bottom). CSR-1 co-immunoprecipitates with NHL-2. NHL-2 was immunoprecipitated from one-day-  
1019 old adult hermaphrodite extracts and CSR-1 was detected by Western blot. **(B)** DRH-3 co-  
1020 immunoprecipitates with NHL-2. NHL-2 was immunoprecipitated from one-day-old adult  
1021 hermaphrodite extracts and DRH-3 was detected by Western blot. **(C)** GST-pulldown of NHL-2. GST-

1022 NHL-2 was able to pulldown CSR-1 and HRDE-1, but not WAGO-1. SDS-PAGE gel of purified  
1023 GST-NHL-2 is shown in Supplemental Figure S8B. **(D)** Western blot using anti-CSR-1 showing no  
1024 variance between CSR-1 levels in wild-type animals (WT) and *nhl-2(ok818)* mutants when equal  
1025 amounts of protein are loaded. Tubulin is shown as a loading control (bottom).

1026

1027 **Figure 5. Comparison of small RNAs in *nhl-2(ok818)* mutants to other small RNA and mRNA**  
1028 **profiles. (A)** Venn-pie diagrams show comparisons between sets of genes that are the targets of 22G-  
1029 RNAs. For mutant strains, genes are two-fold or greater depleted of 22G-RNAs in mutants relative to  
1030 appropriate wild-type controls, with a minimum of ten rpm. For Argonaute IPs, genes are two-fold or  
1031 greater enriched for 22G-RNAs in the IP relative to a total small RNA input sample, with a minimum  
1032 of ten rpm. Numbers shown in bold demonstrate statistically significant overlap. **(B)** Venn-pie  
1033 diagrams show comparisons between 22G-RNA gene targets (as in (A), left/rows), and mRNA  
1034 transcriptome data (bottom/columns) from Total gonads (the union of entire male and female gonad  
1035 transcriptomes), male gonads (Spermatogenesis), female gonads (Oogenesis), and gender neutral genes  
1036 (Ortiz, et al., 2014)(the overlap between genes expressed in both male and female gonads). Numbers  
1037 shown in bold demonstrate statistically significant overlap. **(C-E)** Distribution of 22G-RNA reads in  
1038 *nhl-2(ok818)* mutants along the scaled gene bodies are shown for CSR-1 target genes (C), WAGO-1  
1039 target genes (D), and HRDE-1 target genes (D) in *nhl-2(ok818)* and wild-type animals.

1040

1041 **Figure 6. The NHL domain of NHL-2 binds RNA. (A)** Side and top view of the homology-based  
1042 structure prediction of the NHL-2 NHL domain and its six  $\beta$ -propellers marked blue. Electrostatic  
1043 surface representation of the NHL-2 NHL domain showing negative regions in blue and positive in red

1044 is shown below. The six blades of the  $\beta$  propeller of the NHL domain are numbered (I–VI). **(B)**  
1045 Identification of RNA-binding motif of purified GST-NHL-2-NHL domain by RNAcompete. The top  
1046 five high-scoring 7-mers, and the scatter plots, displaying  $Z$  scores and motifs for the two halves of the  
1047 RNA pool (set A and set B) are shown. Sequence logos were derived by aligning the top ten high-  
1048 scoring 7-mers. **(C)** Quantitative assessment of RNA-binding of GST-NHL-2 NHL domain and GST.  
1049 The fluorescence anisotropy of reactions contained 1 nM fluorescently-labeled 17mer poly-U single-  
1050 stranded RNA and increasing concentrations of GST-NHL-2 NHL domain (closed circles) or GST  
1051 alone (open circles).

1052

1053 **Figure 7. Analysis of the 22G-RNAs targeting the *nhl-2(ok818)* mRNA transcriptome.** **(A)** Venn-  
1054 pie diagrams indicate the number of genes enriched in or depleted of 22G-RNAs in *nhl-2(ok818)*  
1055 mutants relative to wild-type worms at 20°C and 25°C, as determined using EdgeR. Numbers in bold  
1056 demonstrate statistically significant overlap. Each row corresponds to a gene set, with its label on the  
1057 right. Each Venn-pie diagram indicates the overlap between the gene set of its row and the gene set  
1058 whose label is in its column. **(B)** Venn-pie diagrams show comparisons between the predicted targets of  
1059 the miRNAs *let-7* and *lsy-6* (determined using TargetScan6), and genes that are mis-regulated in *nhl-*  
1060 *2(ok818)* mutants. **(C)** Venn-pie diagrams show comparisons between the genes depleted of 22G-  
1061 RNAs in *nhl-2(ok818)* mutants and the genes enriched in 22G-RNAs in CSR-1, WAGO-1, or HRDE-1  
1062 IP samples with *nhl-2(ok818)* mRNA-seq data. **(D)** Venn-pie diagrams show comparisons between *nhl-*  
1063 *2(ok818)* mRNA-seq data and genes depleted of 22G-RNAs in *glp-4(bn2)* mutants (which have very  
1064 few germ cells) or germline expressed gene mRNA-seq data (Ortiz et al., 2014) (as in Figure 4B).

1065

1066 **Figure 8. Model: NHL-2 acts as a hub of gene regulatory activity.** (A) NHL-2 interacts with the  
1067 miRNA pathway in the soma, where it may regulate the translation of *let-7* and *lgy-6* targets. The NHL  
1068 RNA binding domain of NHL-2 may help to reinforce target selection of miRISC in this pathway. (B)  
1069 In the germline, NHL-2 interacts with the 22G-RNA pathway, specifically via genetic and physical  
1070 interactions with the RdRP helicase DRH-3. In this capacity, NHL-2 could impact the processivity or  
1071 reloading of the RdRP complex on mRNA templates, and/or could aid in target mRNA selection via its  
1072 RNA binding capacity. Owing to its genetic and physical interaction with CSR-1, NHL-2 could also be  
1073 involved in the handoff of 22G-RNAs from the RdRP complex to Argonaute. If NHL-2 mediates gene  
1074 regulation via 22G-RNAs, it is likely to be at the level of translation. (C) The intrinsic RNA binding  
1075 capacity of NHL-2 could enable it to regulate a large number of transcripts in the soma and germline,  
1076 both positively and negatively. This activity could be influenced by additional binding partners, and we  
1077 speculate that it may occur in P bodies (soma) and P granules (germline) based on the localization  
1078 pattern of NHL-2.

1079 **Supplemental figures**

1080 **Figure S1. Comparison of representative TRIM-NHL proteins.**

1081 **(A)** Domain organization of selected TRIM-NHL family proteins. The TRIM-NHL family of proteins  
1082 are conserved among metazoans, however, they often display variable domain organization. Canonical  
1083 TRIM-NHL proteins have a three zinc-binding domains (a RING finger, one or two B-box motifs) and  
1084 a coiled-coil domain in the N-terminal half of the proteins, and a series of NHL repeats at the C-  
1085 terminal end of the protein. Examples shown are from: *Drosophila melanogaster* (BRAT and Mei-  
1086 P26), *C. elegans* (NCL-1 and NHL-2) and *Homo sapiens* TRIM32.

1087

1088 **Figure S2. The NHL-2 antibody is specific.**

1089 **(A)** NHL-2 and CGH-1 staining of dissected *nhl-2(ok818)* hermaphrodite germlines demonstrates that  
1090 the NHL-2 antibody is specific and that CGH-1 localizes properly in the absence of *nhl-2*. Scale bar 50  
1091  $\mu\text{m}$ . **(B)** NHL-2 and CGH-1 co-staining of wild-type embryos show that NHL-2 is enriched in the germ  
1092 cell lineage (P lineage, posterior/right), where it is found in the cytoplasm and in P granules  
1093 (arrowheads). Scale bar 10  $\mu\text{m}$ . **(C)** NHL-2 and CAR-1 co-staining of temperature sensitive mutant  
1094 *cgh-1(tn691)* grown at the restrictive temperature shows that NHL-2 does not co-localize with CAR-1  
1095 in the solid sheet in the gonad core. Arrowheads point to the CAR-1 solid sheets. Scale bar 10  $\mu\text{m}$ .

1096

1097 **Figure S3. Synthetic brood size reduction and embryonic lethality between *nhl-2(ok818)* and the**

1098 **CSR-1 pathway.** **(A)** Knockdown of CSR-1 pathway genes in *nhl-2(ok818)* mutants results in  
1099 synthetically reductions in brood size that are significantly different than knockdown in wild-type  
1100 animals. **(B)** Average embryonic lethality of unhatched embryos from the same brood size assay.

1101 Knockdown of CSR-1 pathway genes in *nhl-2(ok818)* mutants results in significantly higher embryonic  
1102 lethality compared to knockdown in wild-type animals. \*\*\*=P values<0.001, error bars represent  
1103 standard error of mean. *n*=5.

1104

1105 **Figure S4. The RdRP complex is intact in *nhl-2(ok818)* mutants.** (A) Western blot using anti-CSR-  
1106 1 showing no variance between CSR-1 levels in wild-type animals (WT) and *nhl-2(ok818)* mutants  
1107 when equal amounts of protein are loaded. Tubulin is shown as a loading control (bottom) (B) SDS-  
1108 PAGE gel of purified GST-NHL-2 and GST used in GST Pull-down experiments. Arrow heads  
1109 indicate the positions of GST-NHL-2 and GST (C) An IP of DRH-3 also precipitates the RdRP  
1110 complex components EKL-1 and EGO-1 in wild-type and *nhl-2(ok818)* mutants at 25°C. Western blots  
1111 are probed with anti-EGO-1 (top), anti-DRH-3 (center), anti-EKL-1 (bottom). Sizes are marked, and a  
1112 mock IP (beads only) is shown as a negative control. All antibodies are as used in (Claycomb et al.,  
1113 2009, Gu et al., 2009). (D) A darker exposure of the DRH-3 and mock IP lanes.

1114

1115

1116 **Figure S5. Analysis of small RNA populations in *nhl-2(ok818)* mutants and wild-type animals at**  
1117 20°C. (A) Length and first nucleotide distribution of small RNAs in wild-type and *nhl-2(ok818)*  
1118 mutants at 20°C. Small RNA abundance is measured in reads per million (rpm) for all small RNAs that  
1119 are mapped to the genome or exon-exon junctions. (B) Proportions of reads which were aligned to  
1120 21U-RNAs (piRNAs), miRNAs, sense (S) mRNAs, antisense (AS) mRNAs, pseudogenes,  
1121 RepeatMasker annotated repeat elements (RMSK), and the unannotated portion of the genome, with

1122 the first nucleotide distribution of small RNAs in each category (Note that all classes except for  
1123 miRNAs and piRNAs include 22G-RNAs and 26G-RNAs).

1124

1125 **Figure S6. Analysis of small RNA populations in *nhl-2(ok818)* mutants and wild-type animals at**  
1126 **25°C. (A)** Length and first nucleotide distribution of small RNAs in wild-type and *nhl-2(ok818)*  
1127 mutants at 25°C. Small RNA abundance is measured in reads per million (rpm) for all small RNAs that  
1128 are mapped to the genome or exon-exon junctions. **(B)** Proportions of reads which were aligned to  
1129 21U-RNAs (piRNAs), miRNAs, sense (S) mRNAs, antisense (AS) mRNAs, pseudogenes,  
1130 RepeatMasker annotated repeat elements, and the unannotated portion of the genome, with the first  
1131 nucleotide distribution of small RNAs in each category (Note that all classes except for miRNAs and  
1132 piRNAs include 22G-RNAs and 26G-RNAs).

1133

1134 **Figure S7. Comparison of abundance (in ppm) for different categories of small RNAs in wild-**  
1135 **type (green) and *nhl-2(ok818)* mutants (blue) at 20°C vs. 25°C.** Biological replicates are indicated  
1136 as 1, 2 and 3.

1137

1138 **Figure S8. The distribution of 22G-RNAs is reduced at the 5'-end of CSR-1 targets in *nhl-***  
1139 ***2(ok818)* relative wild-type control.** Along the scaled gene body, the coordinates of the centroids of  
1140 the areas under the 22G-RNA density curves (Fig. 4C-E) were calculated and compared. The centroid  
1141 positions for 4,392 CSR-1 target genes between mutants and wild-type controls were compared in  
1142 boxplot with Wilcoxon rand sum test p-values (A) and scatter plots (B,C) with t-test p-values.

1143

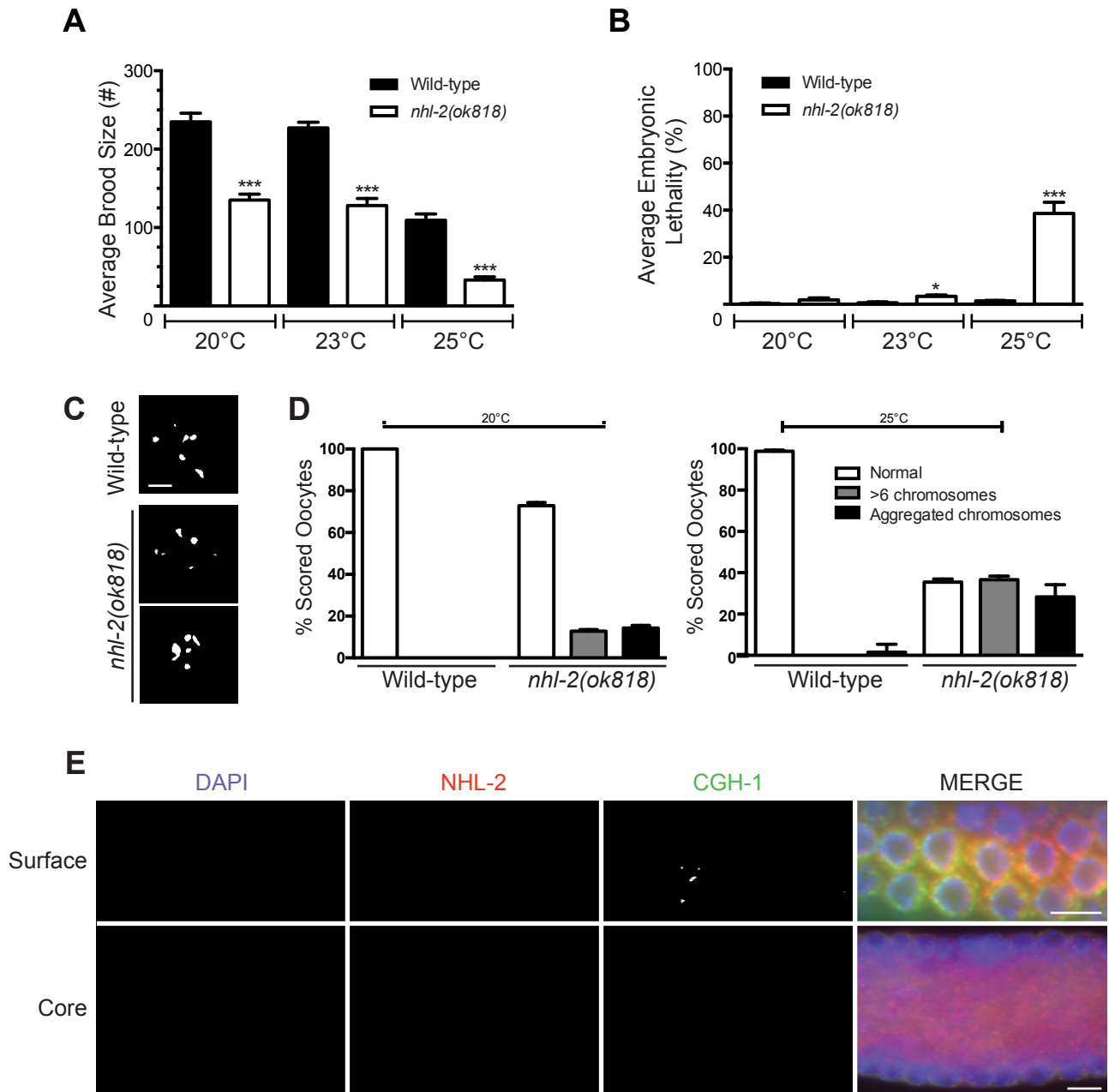
1144 **Supplemental Tables**

1145 Table S1: Small RNA sequencing statistics of four samples in *nhl-2(ok818)* mutants and wild-type  
1146 animals at 25°C or 20°C.

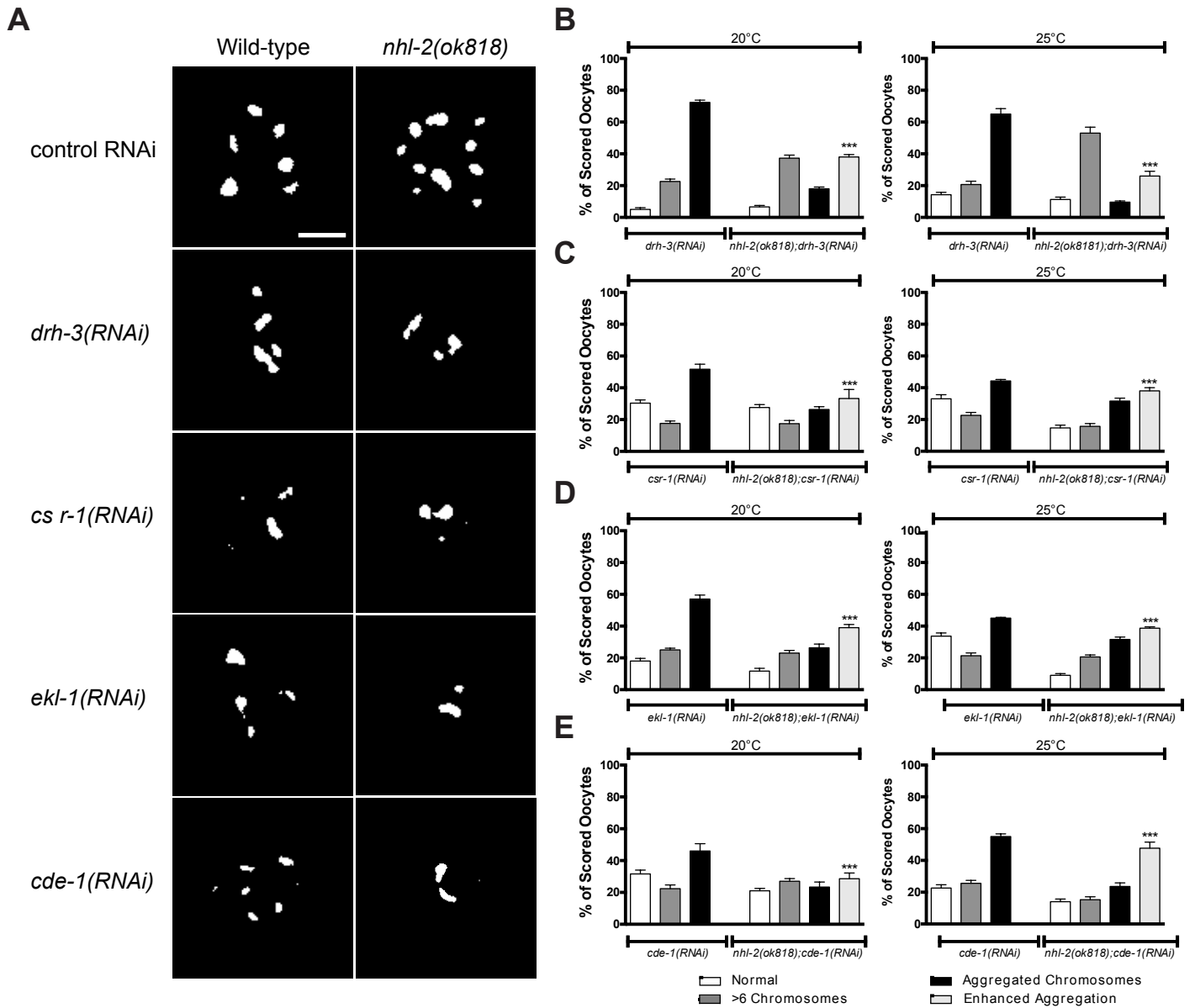
1147 Table S2: Genes altered in small RNA sequencing datasets generated and investigated in this paper.

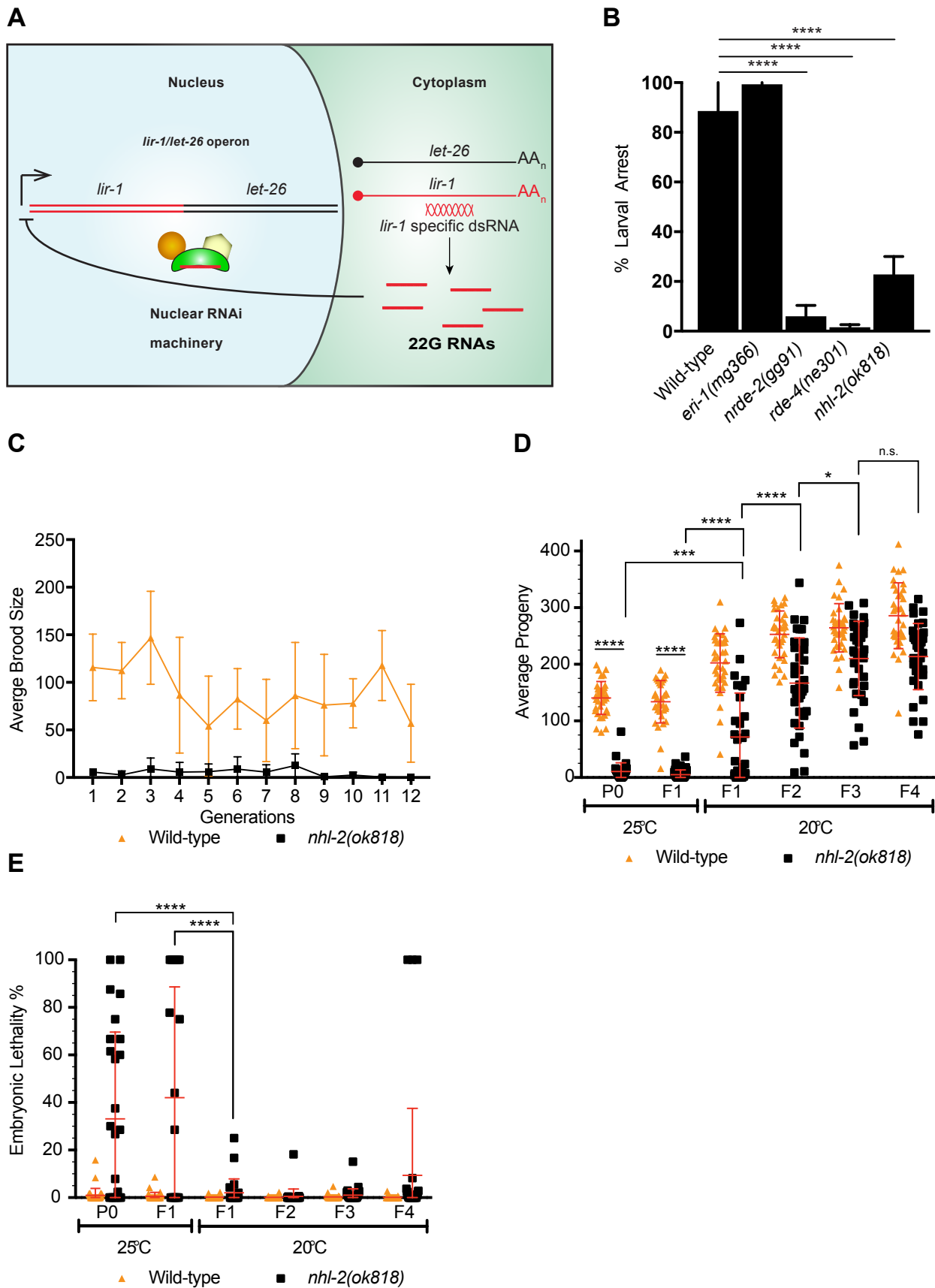
1148 Table S3: Master table of small RNA and mRNA-seq data used in this study.



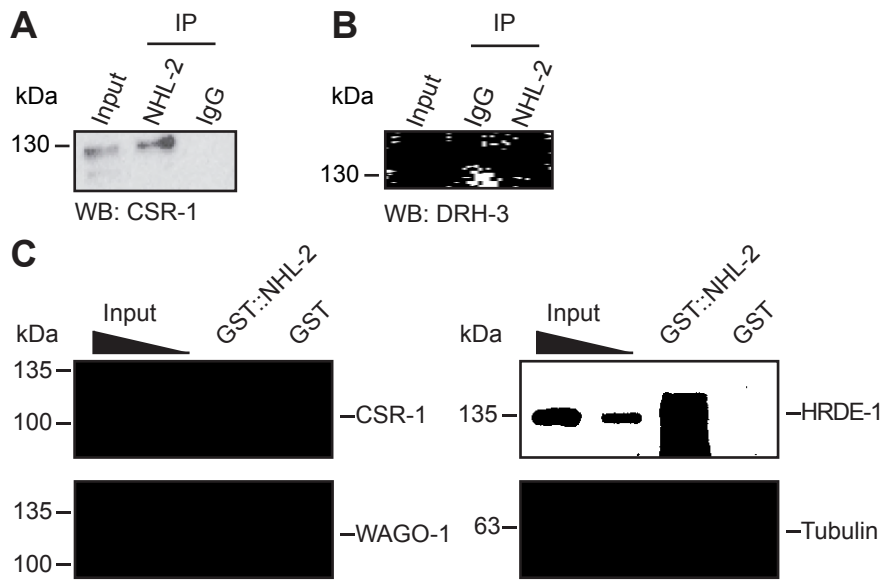


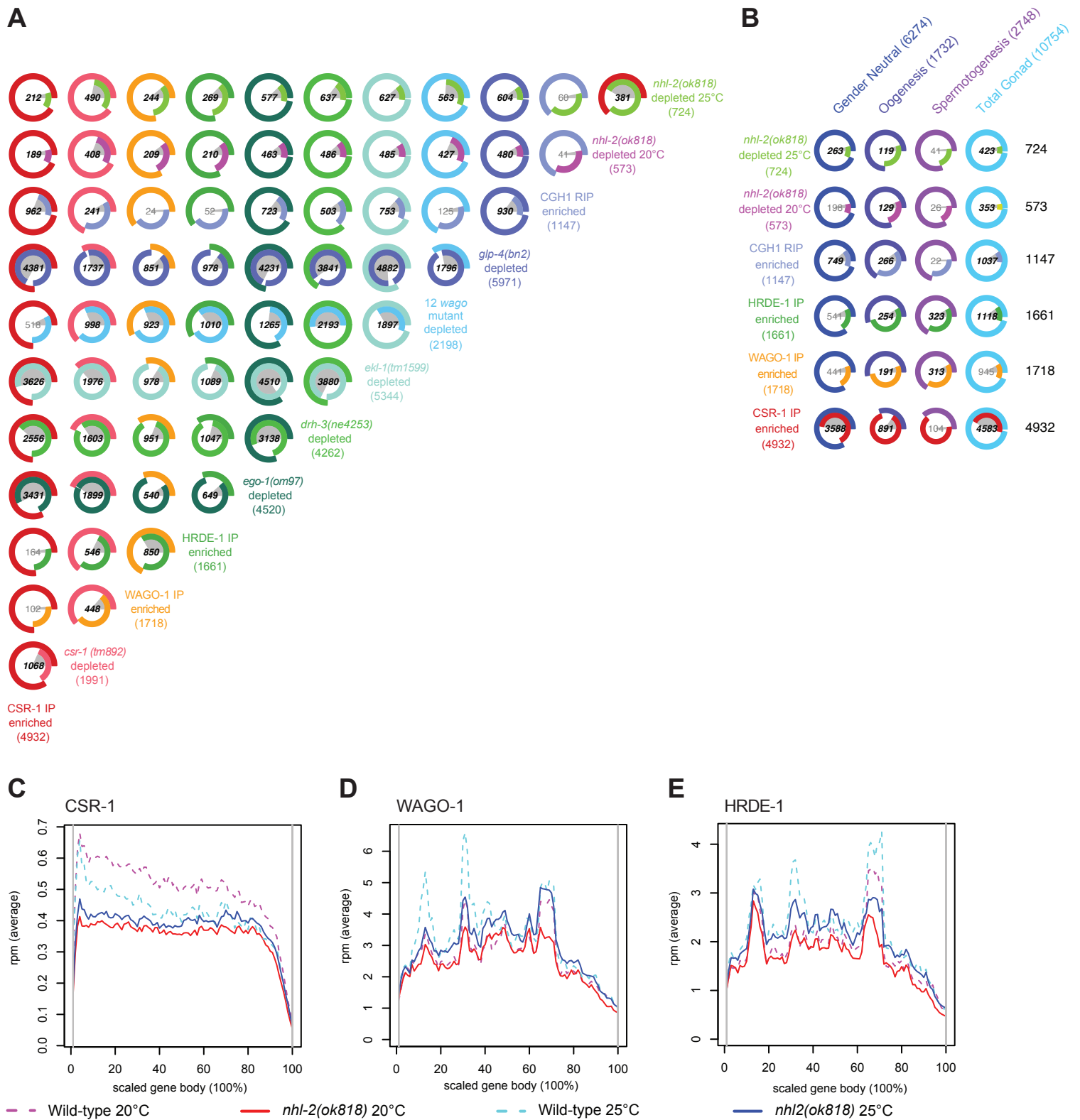
Davis et al Fig. 2

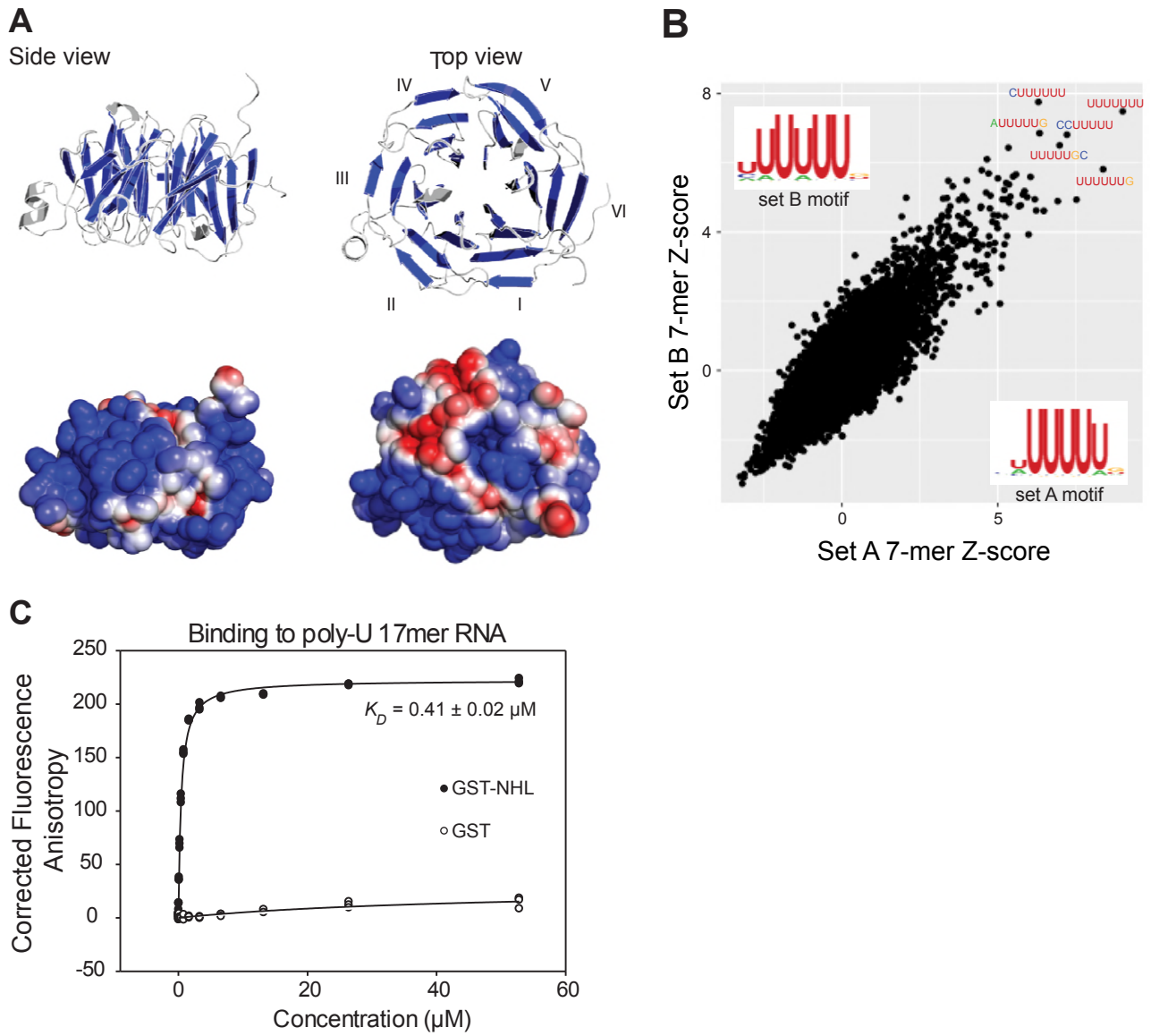




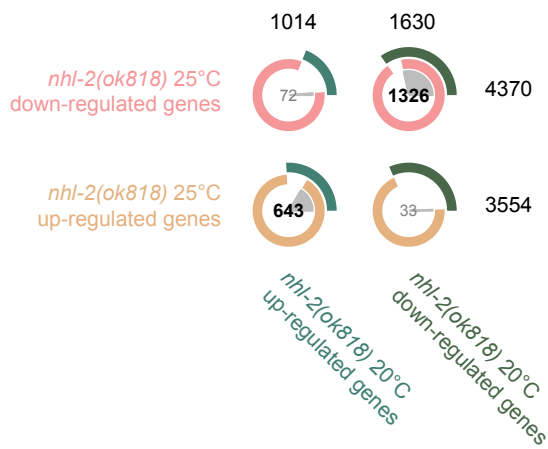
Davis et al Fig. 4



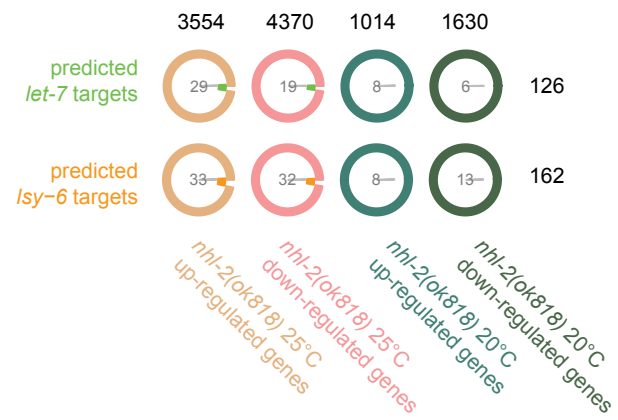




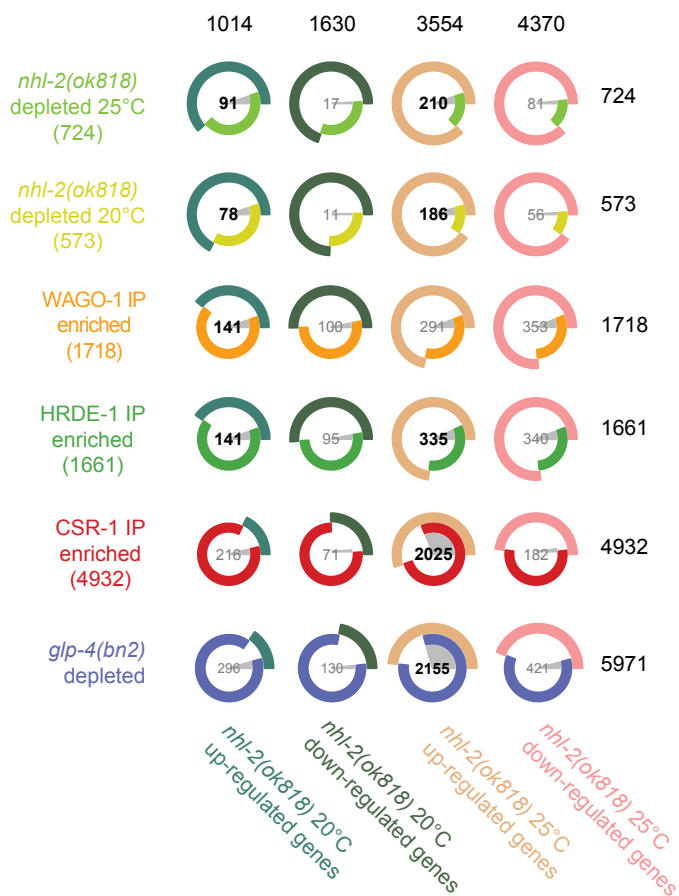
**A**



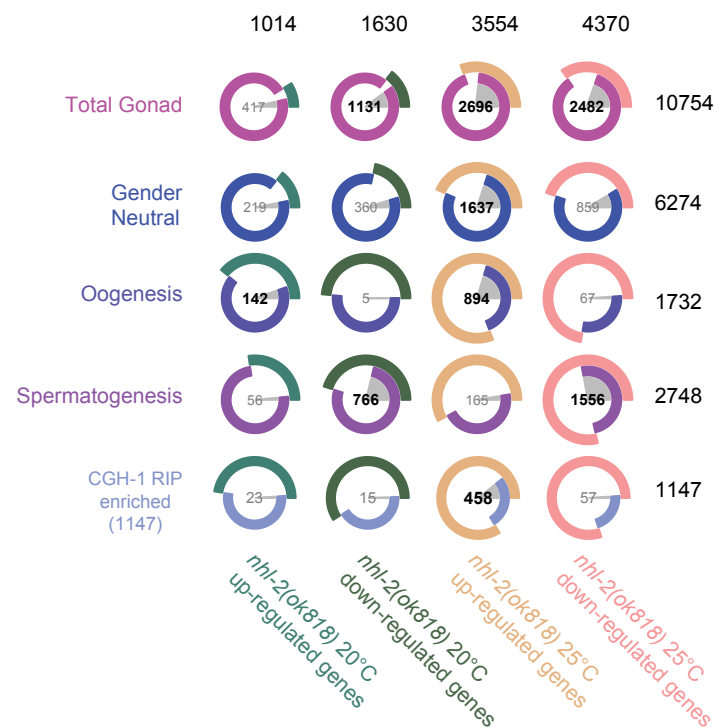
**B**

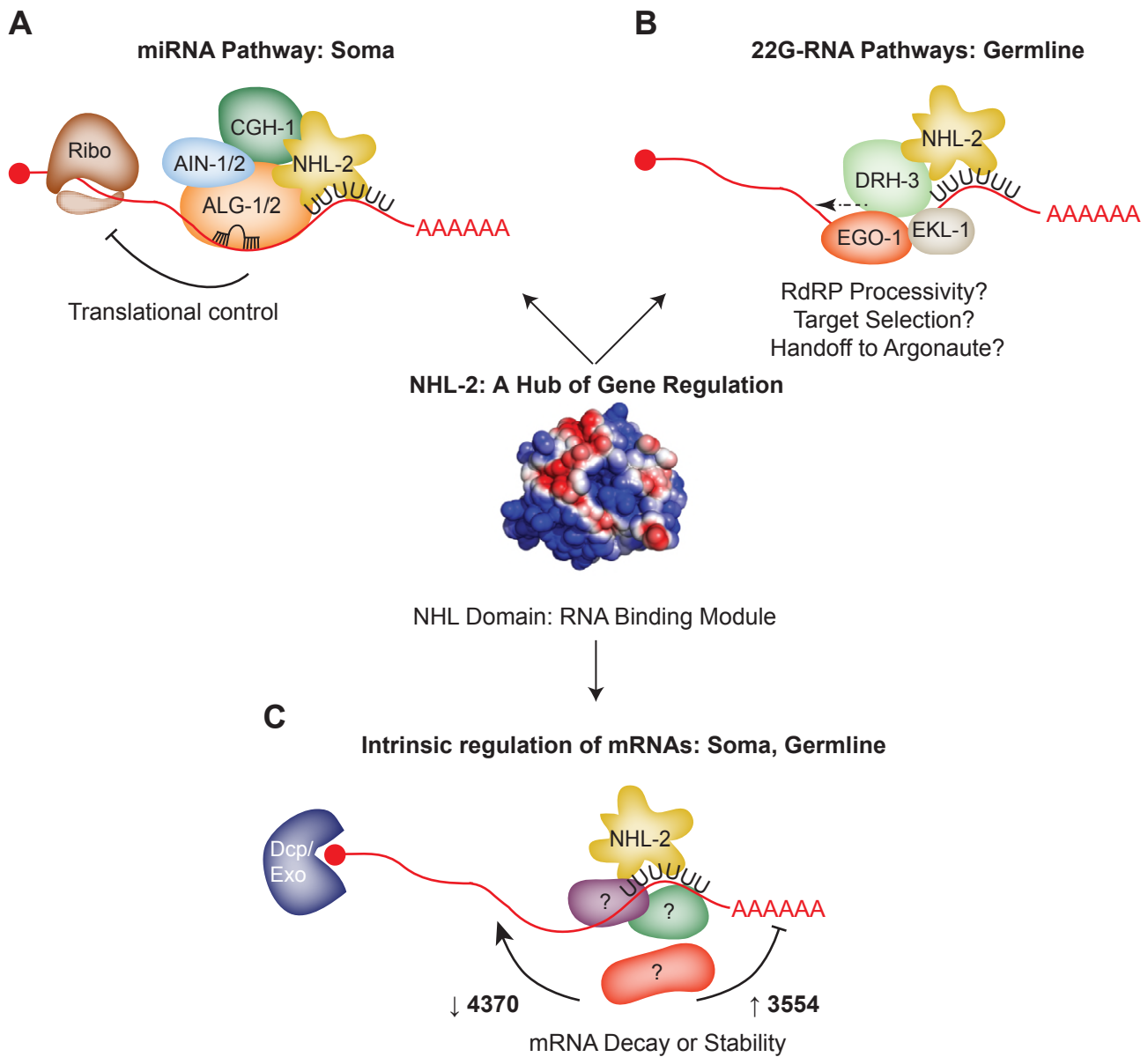


**C**



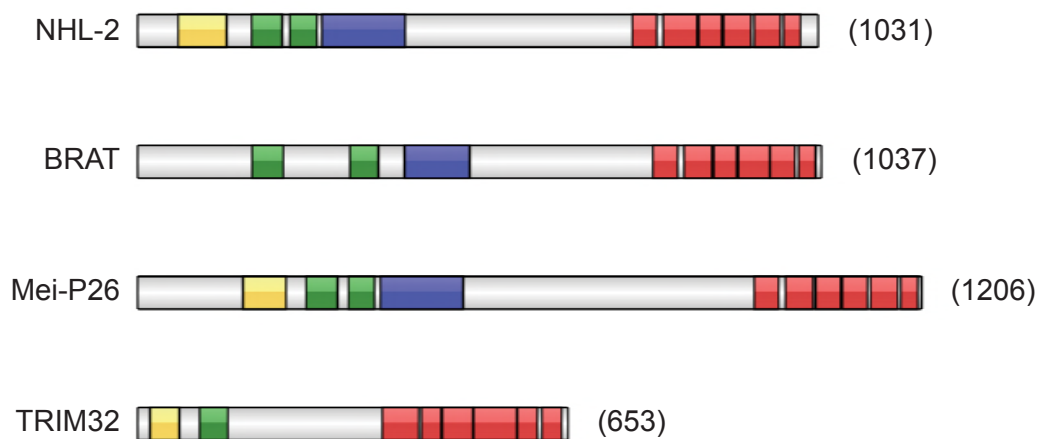
**D**





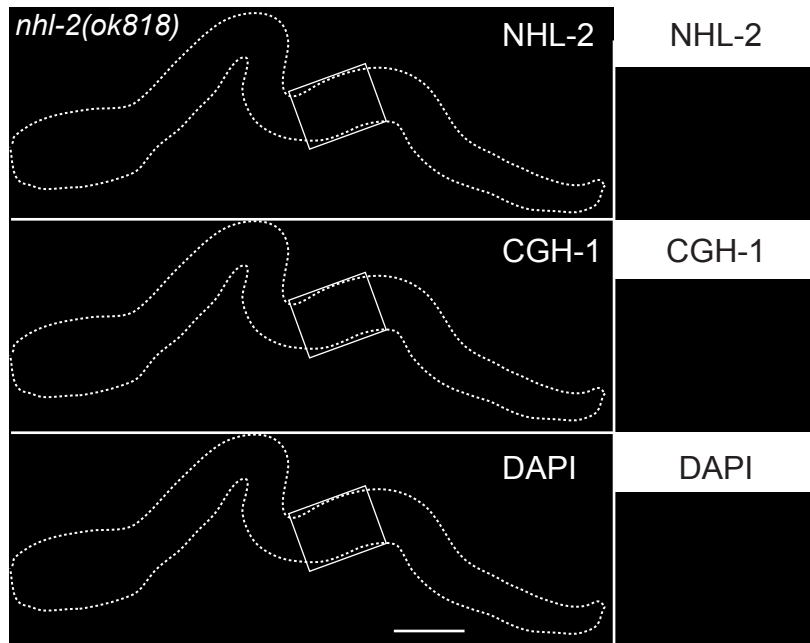


## Davis Supplemental Fig. S1

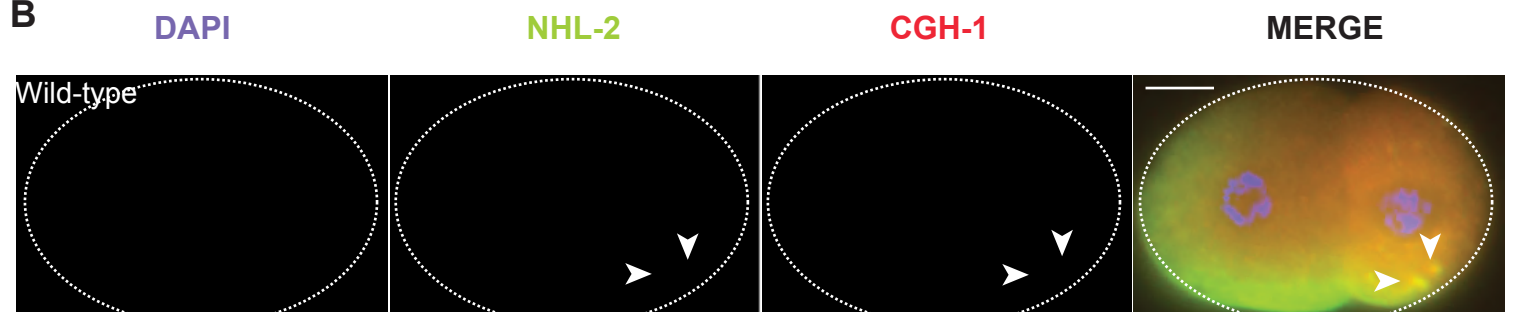


## Davis Supplemental Fig. S2

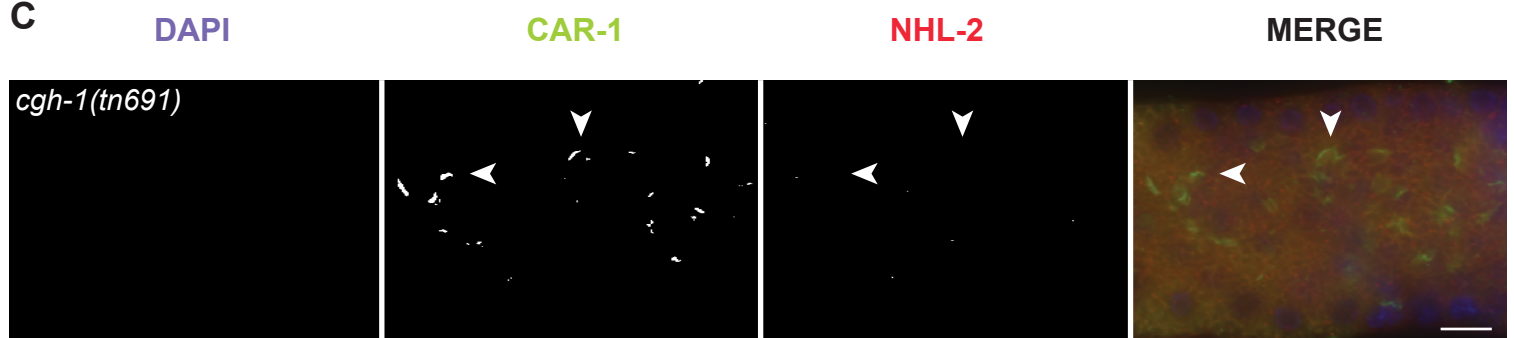
**A**



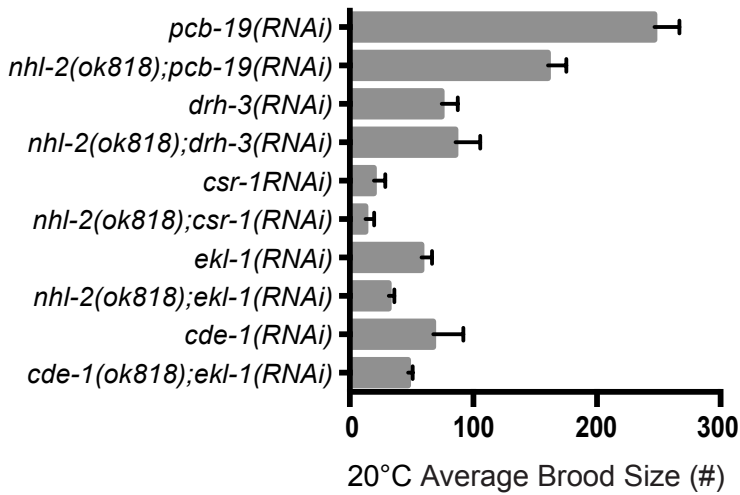
**B**



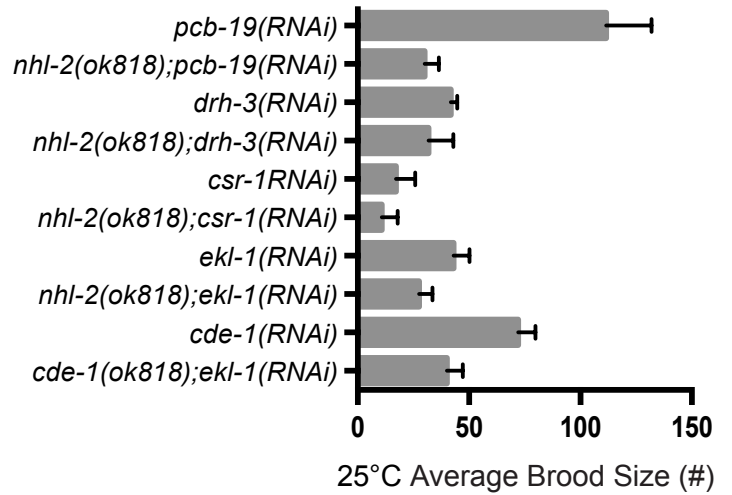
**C**



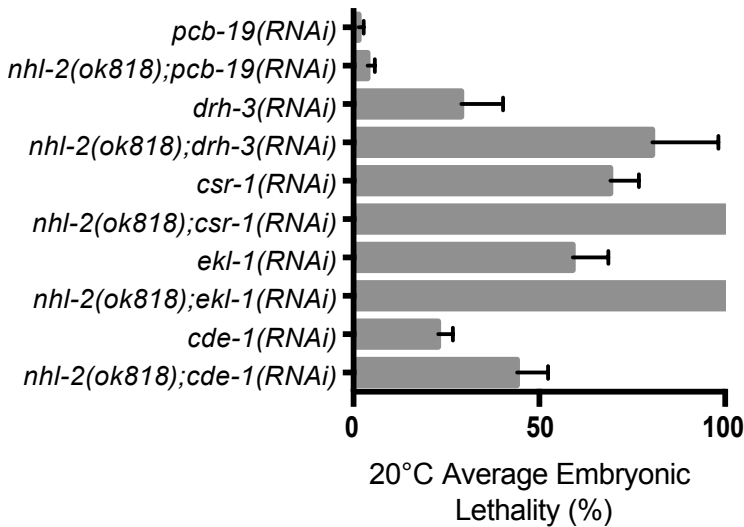
**A**



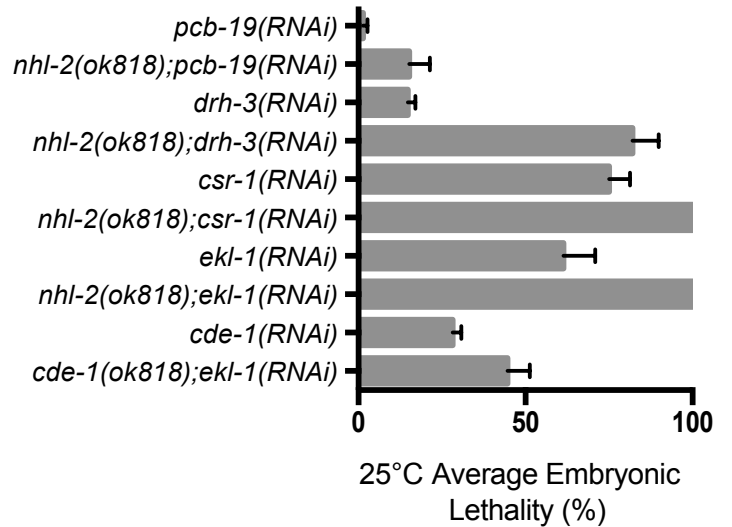
**B**

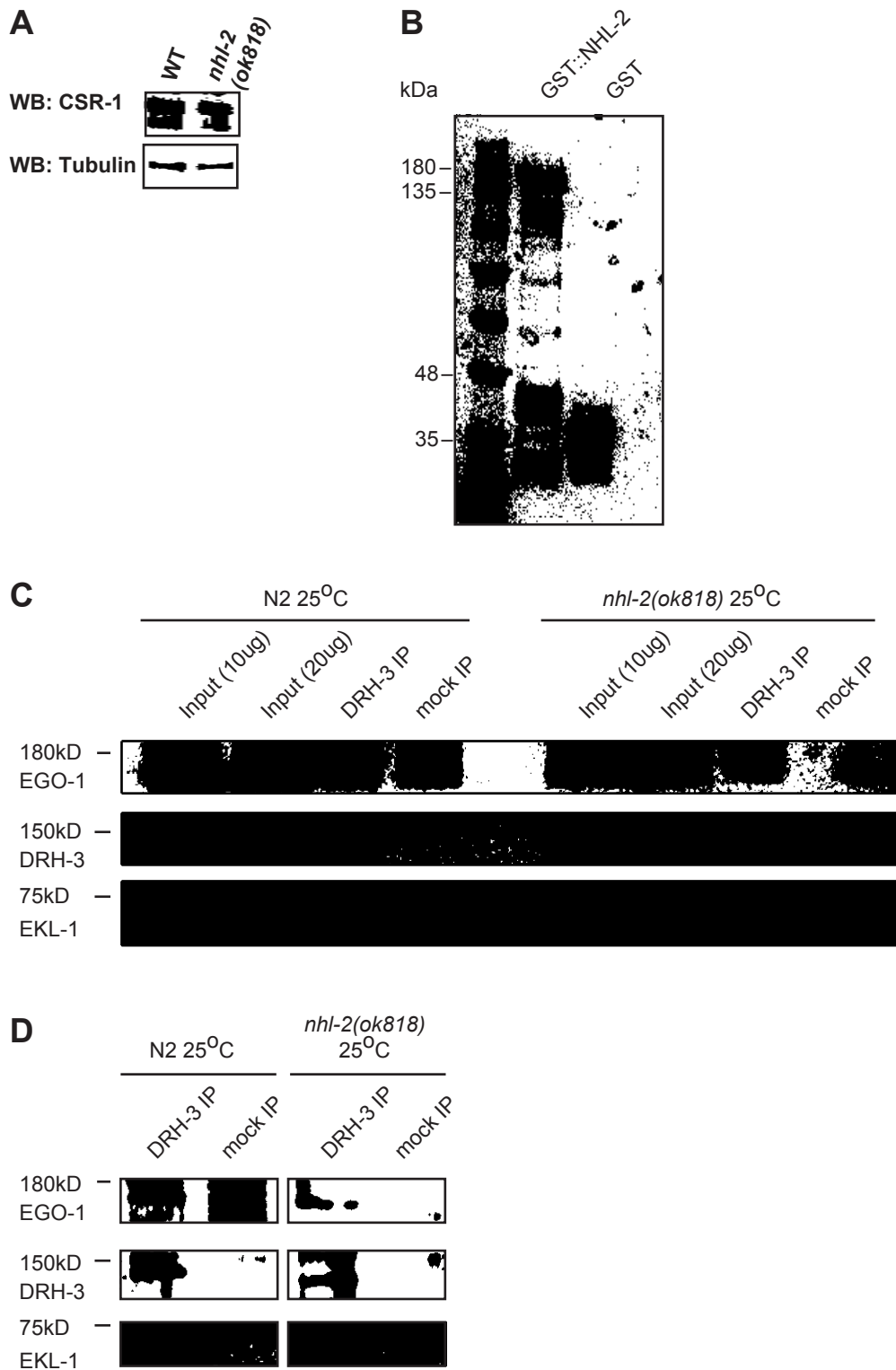


**C**

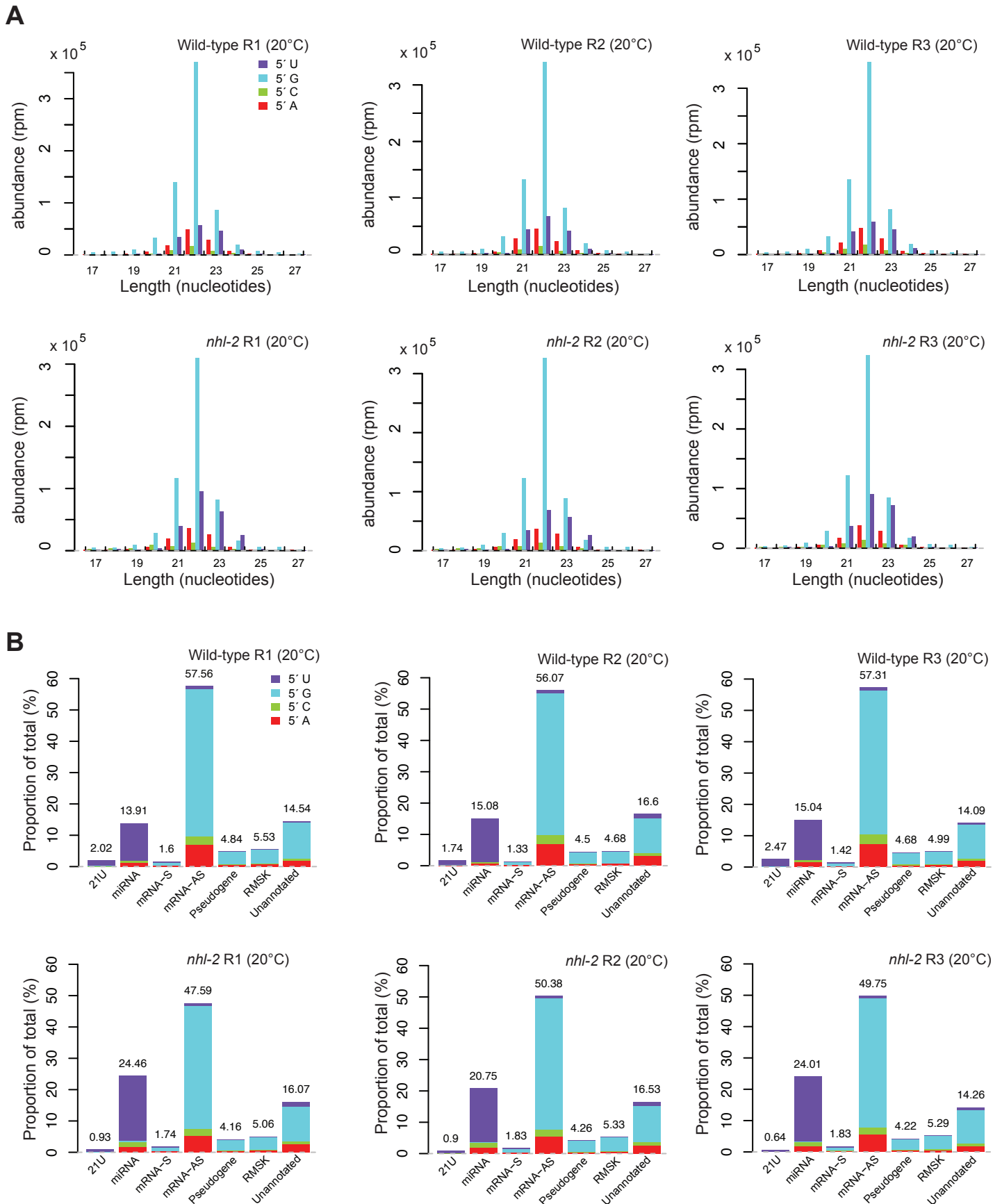


**D**

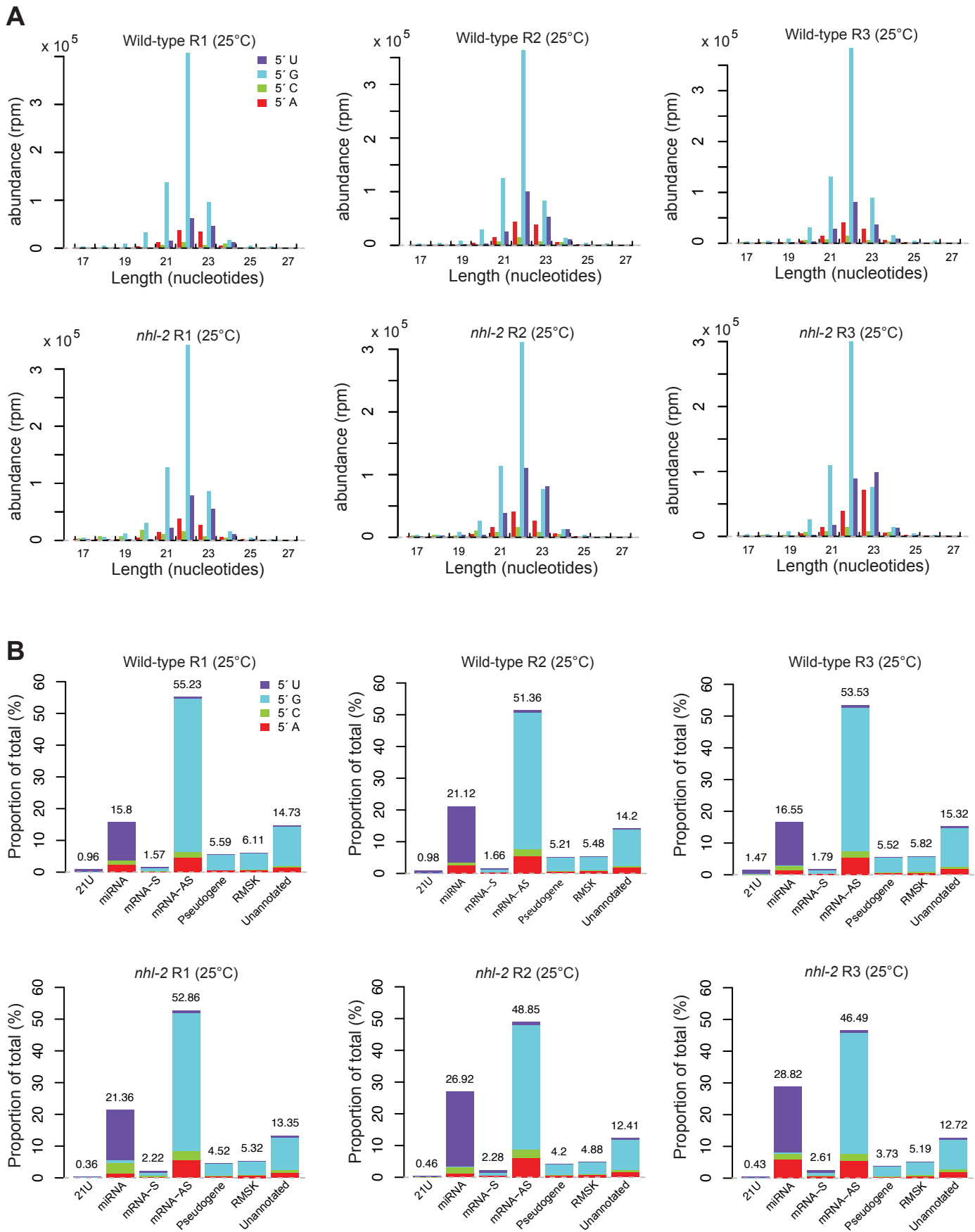




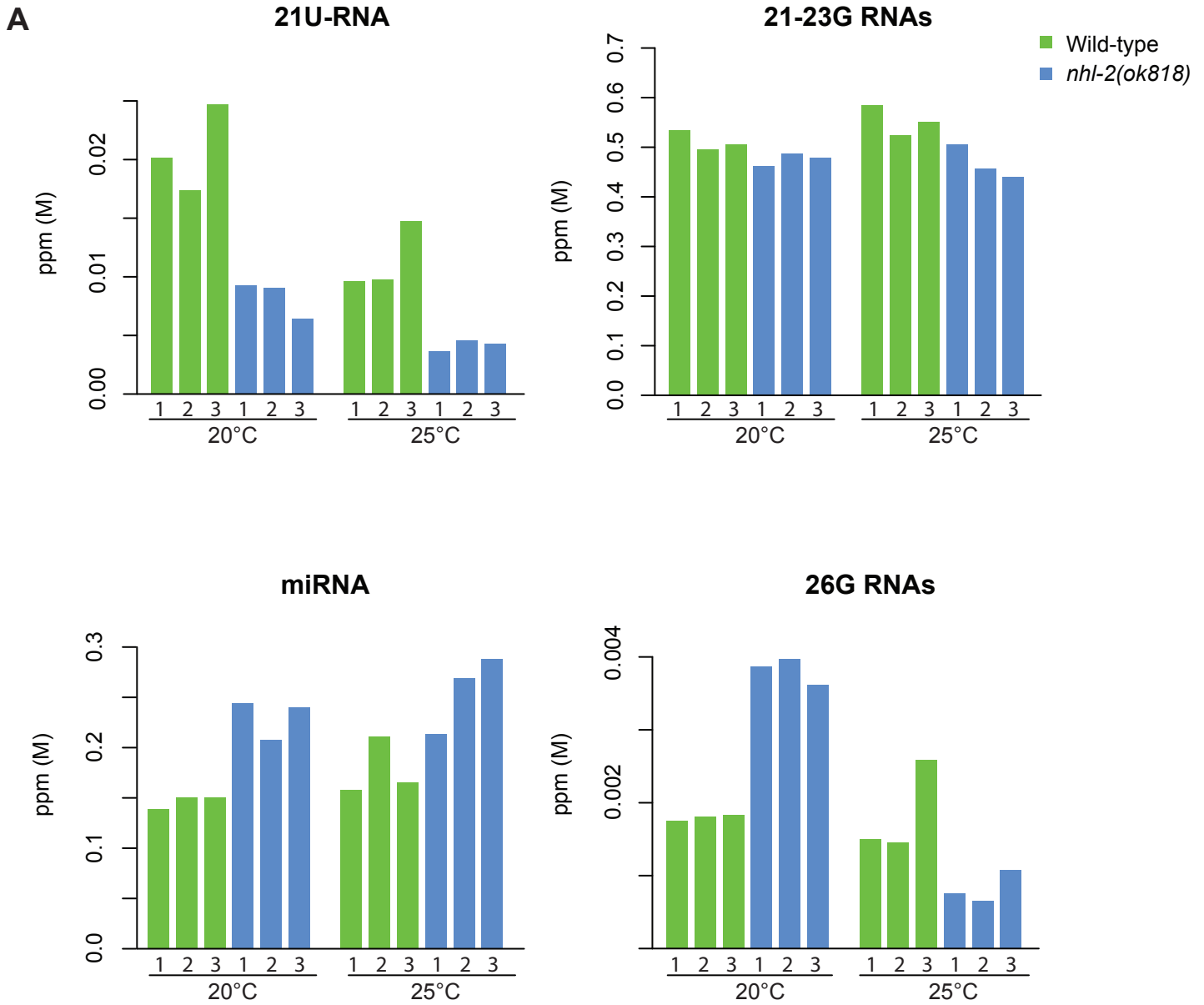
## Davis Supplemental Fig. S5



## Davis Supplemental Fig. S6

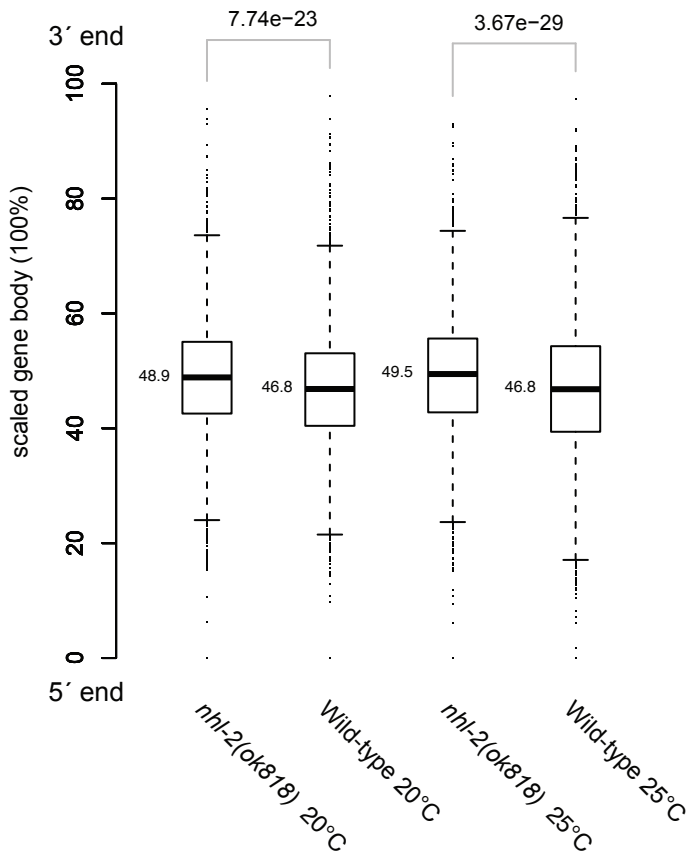


## Davis Supplemental Fig. S7

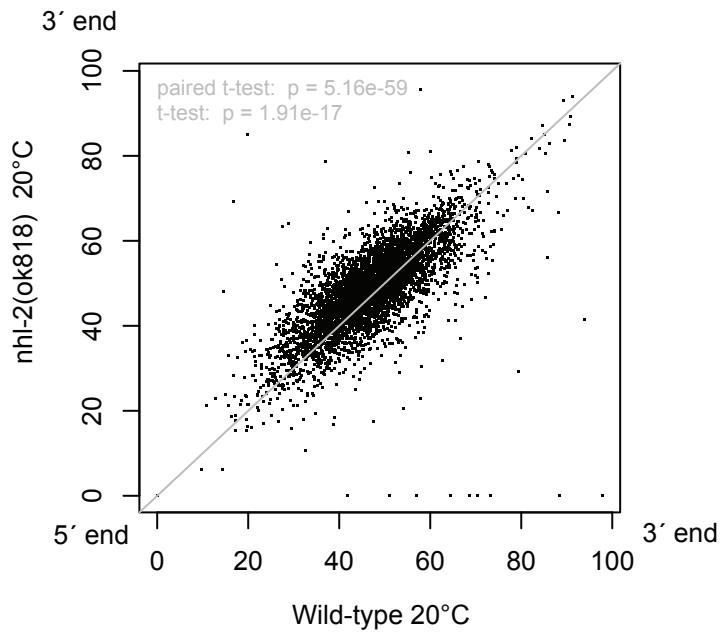


## Davis Supplemental Fig. S8

**A**



**B**



**C**

