

Marquette University  
**e-Publications@Marquette**

---

Biological Sciences Faculty Research and  
Publications

Biological Sciences, Department of

---

3-1-2006

# Radial Spoke Proteins of *Chlamydomonas* Flagella

Pinfen Yang

*Marquette University*, [pinfen.yang@marquette.edu](mailto:pinfen.yang@marquette.edu)

Dennis R. Diener

*Yale University*

Chun Yang

*Marquette University*

Takahiro Kohno

*University of Tokyo*

Gregory J. Pazour

*University of Massachusetts Medical School Worcester*

*See next page for additional authors*

---

Accepted version. *Journal of Cell Science*, Vol. 119, Pt. 6 (March 2006): 1165-1174. DOI. © 2006  
Company of Biologists. Used with permission.

---

**Authors**

Pinfen Yang, Dennis R. Diener, Chun Yang, Takahiro Kohno, Gregory J. Pazour, Jennifer M. Dienes, Nathan S. Agrin, Stephen M. King, Winfield S. Sale, Ritsu Kamiya, Joel L. Rosenbaum, and George B. Witman

# Radial spoke proteins of *Chlamydomonas* flagella

Pinfen Yang

*Department of Biological Sciences, Marquette University  
Milwaukee, WI*

Dennis R. Diener

*Department of Molecular, Cellular and Developmental Biology,  
Yale University  
New Haven, CT*

Chun Yang

*Department of Biological Sciences, Marquette University  
Milwaukee, WI*

Takahiro Kohno

*Department of Biological Sciences, Graduate School of Science,  
University of Tokyo  
Tokyo, 113-0033, Japan*

Gregory J. Pazour

*Program in Molecular Medicine, University of Massachusetts  
Medical School  
Worcester, MA*

**Jennifer M. Dienes**

*Department of Biological Sciences, Marquette University  
Milwaukee, WI*

**Nathan S. Agrin**

*Department of Cell Biology, University of Massachusetts Medical  
School  
Worcester, MA*

**Stephen M. King**

*Department of Molecular, Microbial and Structural Biology,  
University of Connecticut Health Center  
Farmington, CT*

**Winfield S. Sale**

*Department of Cell Biology, Emory University School of Medicine  
Atlanta, GA*

**Ritsu Kamiya**

*Department of Biological Sciences, Graduate School of Science,  
University of Tokyo  
Tokyo, 113-0033, Japan*

**Joel L. Rosenbaum**

*Department of Molecular, Cellular and Developmental Biology,  
Yale University  
New Haven, CT*

**George B. Witman**

*Department of Cell Biology, University of Massachusetts Medical  
School  
Worcester, MA*

## Summary:

The radial spoke is a ubiquitous component of '9+2' cilia and flagella, and plays an essential role in the control of dynein arm activity by relaying signals from the central pair of microtubules to the arms. The *Chlamydomonas reinhardtii* radial spoke contains at least 23 proteins, only 8 of which have been characterized at the molecular level. Here, we use mass spectrometry to identify 10 additional radial spoke proteins. Many of the newly identified proteins in the spoke stalk are predicted to contain domains associated with signal transduction, including Ca<sup>2+</sup>-, AKAP- and nucleotide-binding domains. This suggests that the spoke stalk is both a scaffold for signaling molecules and itself a transducer of signals. Moreover, in addition to the recently described HSP40 family member, a second spoke stalk protein is predicted to be a molecular chaperone, implying that there is a sophisticated mechanism for the assembly of this large complex. Among the 18 spoke proteins identified to date, at least 12 have apparent homologs in humans, indicating that the radial spoke has been conserved throughout evolution. The human genes encoding these proteins are candidates for causing primary ciliary dyskinesia, a severe inherited disease involving missing or defective axonemal structures, including the radial spokes.

**Keywords:** Axoneme, Chaperones, Calcium, Primary ciliary dyskinesia.

## Introduction

The radial spoke is a structurally conserved macromolecular complex that is an essential and ubiquitous component of the '9+2' axoneme of motile cilia and flagella. This T-shaped complex repeats in pairs or triplets, depending on the organism, every 96 nm along each outer doublet microtubule. It consists of a thin 'stalk' that is anchored to the doublet microtubule adjacent to the inner dynein arms and projects towards the center of the axoneme, where it terminates in a bulbous 'head' that interacts with the projections of the central pair of microtubules (e.g. Goodenough and Heuser, 1985; Warner and Satir, 1974; Witman et al., 1978). Thus, the spoke is perfectly positioned to relay signals from the central pair of microtubules to the dynein arms.

The importance of the radial spoke in ciliary and flagellar motility is highlighted by the phenotypes of human (Sturgess et al., 1979) and *Chlamydomonas reinhardtii* (Witman et al., 1978; Huang et al., 1981) mutants lacking the entire complex or all or part of the spoke head; in these mutants, the cilia and flagella are paralyzed or

display abnormal motility. Ultrastructural studies in conjunction with genetic and motility studies of *Chlamydomonas* mutants have provided evidence that the radial spoke transmits signals from the central pair of microtubules to the dynein arms through mechanical and/or mechanochemical interactions (Warner and Satir, 1974; Witman et al., 1978; Huang et al., 1981; Huang et al., 1982; Brokaw et al., 1982; Kamiya, 1982; Goodenough and Heuser, 1985; Omoto et al., 1999; Mitchell and Nakatsugawa, 2004; Smith and Yang, 2004). Measurement of inter-doublet microtubule sliding in the presence of pharmacological reagents has revealed that the control system is modulated by a network of kinases, phosphatases and potential sensors of second messengers that signal motility changes (Smith and Sale, 1992) (reviewed by Porter and Sale, 2000).

Much of our knowledge of the composition of the radial spoke has come from comparisons, using two-dimensional (2D) gels (Piperno et al., 1981), of the proteins of wild-type *C. reinhardtii* versus radial-spoke-defective axonemes; more recently, information has been gained from the analysis of isolated radial spokes (Yang et al., 2001). These studies reveal that the *C. reinhardtii* radial spoke, which sediments as a 20S particle, contains at least 23 distinct polypeptides, termed radial spoke protein (RSP)1 to RSP23 (Piperno et al., 1981; Yang et al., 2001; Patel-King et al., 2004), with a combined molecular mass of approximately 1200 kDa (Padma et al., 2003). Five of these proteins are located in the spoke head and the rest are in the spoke stalk.

Among the 23 RSPs, genes and cDNAs encoding RSPs 2, 3, 4, 6, 16 (HSP40), 20 (calmodulin), 22 [dynein light chain 8 (LC8)] and 23 [p61 nucleotide diphosphate kinase (NDK)] have been cloned (Yang et al., 2004; Williams et al., 1989; Curry et al., 1992; Yang et al., 2005; Zimmer et al., 1988; King and Patel-King, 1995; Patel-King et al., 2004). The predicted amino acid sequences have provided hints as to the possible functions of these proteins. For example, RSP3, which anchors the radial spoke to the outer doublet microtubule (Diener et al., 1993), contains an AKAP (for 'A-kinase anchoring protein') domain and binds the cyclic (c)AMP-dependent protein kinase (PKA) regulatory subunit in vitro (Gaillard et al., 2001). RSPs 2 and 23 contain calmodulin-binding domains and bind calmodulin (RSP20) in vitro

(Yang et al., 2001; Yang and Sale, 2004; Patel-King et al., 2004). RSP23 also contains a Ca<sup>2+</sup>-stimulated NDK activity.

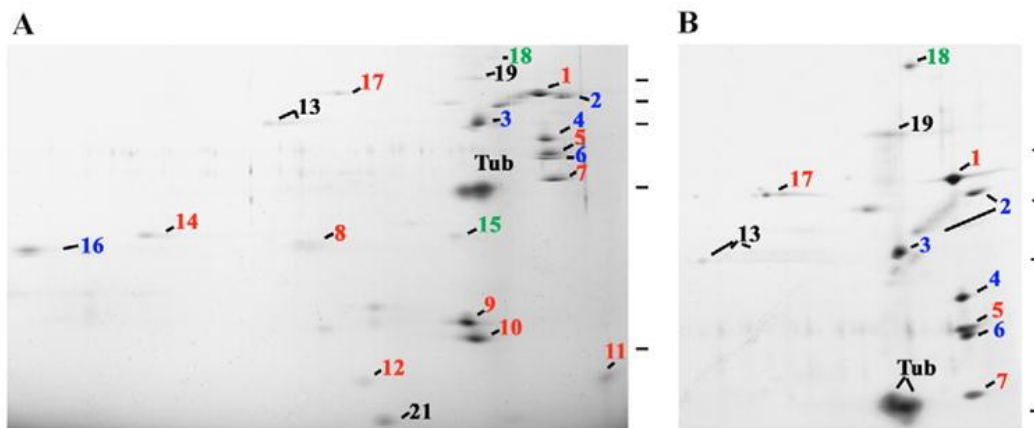
A complete understanding of the architecture, assembly and function of the radial spokes will require a detailed knowledge of the entire ensemble of RSPs. Moreover, although defects in radial spokes are known to be one cause of the severe, genetically heterogeneous, human disorder termed primary ciliary dyskinesia (PCD) (Sturgess et al., 1979; Antonelli et al., 1981), the genes responsible for PCD in patients lacking the radial spokes have not been identified, and discovery of these genes will most probably require a candidate gene approach that begins with genes known to encode RSPs. The development of large databases of *C. reinhardtii* expressed sequence tags (ESTs) (Asamizu et al., 1999; Shrager et al., 2003) and the recent sequencing of the *C. reinhardtii* genome by the US Department of Energy Joint Genome Institute (JGI) (<http://genome.jgi-psf.org/Chlre2/Chlre2.home.html>) has now made possible the accurate identification of RSPs from isolated radial spokes or spots on 2D gels using mass spectrometric methods. Here, we report the sequences of 10 new *C. reinhardtii* RSPs, analyze their potential structural and functional motifs, and identify their most likely human homologs.

## Results

### *Identification of new RSPs*

To identify the previously unknown RSPs, in most instances we purified spoke proteins from 2D gels of isolated axonemes or 20S radial spokes (Fig. 1) based on the well-established 2D map of RSPs (Piperno et al., 1981; Williams et al., 1986; Yang et al., 2001). The excised gel spots for each protein were subjected to tryptic digestion and the resulting peptides were analyzed by matrix-assisted laser desorption/ionisation-time of flight mass spectrometry (MALDI-TOF MS). The MS and MS/MS data were used to search *C. reinhardtii* genomic and EST databases to identify nucleotide sequences encoding the peptides. RSPs 1, 5, 7, 8, 9, 10, 11, 12, 14 and 17 (labeled in red in Fig. 1) are identified here for the first time. Table 1 lists the gene models for these proteins in the JGI *C. reinhardtii* v. 2.0 genome, as well as the National Center for Biotechnology Information (NCBI) accession numbers for the previously identified RSPs. All new proteins

were initially identified on the basis of two or more peptide hits (Table 1; Fig. 2, peptides are indicated by bold letters in the predicted protein sequences); thus, the chance of a coincidental match is remote. In no case did peptides from a spot or band match more than a single gene, indicating the high purity of the protein and the reliability of the search. For each of these proteins except RSP14 and 17, the complete coding sequence plus some 5'- and 3'-untranslated region sequence was determined from ESTs or by amplification of cDNAs followed by sequencing of the products (Fig. 2). The complete coding region of RSP17 obtained from the JGI v. 2.0 gene model was supported by ESTs corresponding to the 5'- and 3'-ends of the message and a total of 15 matching peptides from this study, and a proteomic analysis of the flagellum (Pazour et al., 2005). The C-terminal three-quarters of the predicted RSP14 sequence has been confirmed by RT-PCR, but the sequence may not be complete at the N-terminus.



**Fig. 1** 2D maps of RSPs in 20S radial spoke fractions. Newly identified proteins whose sequences were completely determined are labeled in red. RSPs 15 and 18, marked in green, yielded peptides that matched regions of the genome where no gene model currently exists. Proteins identified previously are in blue. Those that remain to be identified are in black. RSPs 20, 22 and 23, which also were identified previously, are not visible because they are poorly stained by the non-formaldehyde silver stain (RSPs 20 and 23) or are too small to be retained in the gel (RSP22). The proteins were resolved in 12% (A) and 6% (B) gels following non-equilibrium isoelectric focusing. Figures only show the relevant area of pH 4.6–7.3 (A) and 5–6.5 (B). The acidic end is to the right. Horizontal bars indicate molecular markers of 130, 100, 83, 54, 40 and 24 kDa, from top to bottom.



```
>RSP1 (DQ298254)
MALGPPVLPFRGDQYDFGIFNKSSPEEKLNFDLSCVAFDVKQGLHDTLHA
RKPTALDGLVKGFEQALPEETVQVGGDDVIYMPKPKFERQVEVLLFVA
SAPSI PGKKHOLDSSSKLEFAVSYSDVGGQAFNQSPDLKPLAAQGGVSSI
IVAVMYLQAEAGWTLRSVGDCHPFDSFGLIVPELKQTIINLRDHHGVQLD
AADAIQAIDPAERVVTRQFQDQSLDEASAGRAAEPAPVKKLRIDLSTWF
WPPPPTEEGEPEPEPALEYNLVYMKDGEVQSI STGNREATGARAGR
PEPEDEEEKEEKEEPEEGEGEGEGEGEGEPEPPPPPAKVPDVEFK
ERDVIYLDVDPLPAEVRSMLVLTNYDEENGFRVTRVRCRLDVDSNGEA
PLPGSKAAVAAAAAEQGLAAPPNPERVLADYGVLSKYEDDKATTQVAL
MKLYKEYADSAFNVFRGAGVDNVAAFIGQEPDTIINQLKAYLEATKKQA
AEAAAAAAEESGEITADPKPHVWRFRALGNFPGDLSLEAIEHDLKRLF
AFDGLLAFGAARDSSTSRSSFPNGDITYFGSYADDVHGPGLYAFATGAGY
AGEYAGGKRHGRGVYVFDGGTYVGEFVADKFEQGQYRYPDGSVYTGSW
AAGQKHGPGVYWDTARGLRGEWKKGLLVGKGTYEQPALRPEGEFVRGMP
AGTATYTLGHRTLDMPCFAAQHIQAEEGPTLALPCAYGIPPGSGDEPQL
DEEQPIEDTKPPLPAHPKYEGLTFTAELPGAADPTVFPPEEGKVPVI
TAVPAFVSVTGLVA

>RSP5 (DQ298247)
MSEPGEEPVAAPAGPAPDPVNLNELYGSERPAVELLPGVPLSPIVNSCWLP
ADAKAMLAESIIPVPPEDAGEEAGPPPAFEAAAEYNELVRLAKTAPF
RKNWELTIQAKQLQEQVAGLQKPDABEAKQAELENVQVIADAEAAVAEVK
QSFSDPLSLTGMWQALDLDADGGMTTFEVSGQGWPCSLRQLFGEMPSA
APPAGFFDGVVERVLTGFKRRYKERKPGSVQMLKLPANVFSDAWSTGGA
PAAVAEAVEYERARANVFGPDGGVTPEGVPEPLDVLQVWVDAADPL
PVLKALYRLMAHQLDLQNDESGEVSVSEPKKIRGLVDFPADRLKAAIQ
GVPITCVQVHSLVRSQAQVLDLCAKYGIKVLARGGTLGGLLSAKYLGA
PPDPVRGDDADLSVPGCLDAVNNVGGWARLQAALAVIKGIADKHGVKPE
TVALRQINAGCQPLVTTWRSSRWRFQFYGWSSFEVSGRPGVDGPLF
QVESFLDVEDVRLAGLAAVHLGPKAG

>RSP7 (DQ298255)
MSSTYQKPIITIPGDFPALKKAFTREILRAQPSNIYEFGARYFSGLQQA
PEGLGRAAPVEPASTSHAATSKATDVEETAVMFDIAALTPAELPIMLKL
FIEADDRSGFLDRHEFTAVLRNANLKLSDRQIRQILAEADENDDDVIQY
KEFLPIMVIDLQSIKAKEQAKAMMHGVEVMVTRTEVETMLLHGLPQEEQLA
LMLKVFKKADAGSGQLNRHEFKAEALKAELGLTPKDINLILSHIDVDRD
GLVSYEEFIPVCFQVLFVERFKDEIVVNDILGNADLQMLLGAFRDADPD
NTGLLSQRQVKSIFKELSYKALGLTTLQMVSLISQAPPTPDGMVQYIQPV
PQAASIIIRSMYDVETMKGRMHAIKAVAEAGGIAALGALDLDQLRGVLEQA
FQRVDTEGAGQLTLPQVTVLDGLNLSLAPDANLALSDQHMKAMFAIDAD
ESGTVDWTELVNFCIDALEHIEREAYVANMRDGGAGGAGEAEASPGDEEA

>RSP8 (DQ298248)
MQSHSRHVSEHLKDLHDPDLESEFPKHVIEDEVAEAHGRRAIKLVAVL
ALPELPDDQRAHALRVLNGLSTQEHKTNVAEAGAAPLCLQASQCRDDE
VRLSCLASLQGVMAGRNGIIVAAGLPLVTEALQTTPEQAAAALKSFA
ASNDGAAQNLNERAAIVPALVTLTLLSQPTDPAFTLTAFAFNSALSTLEGMTRT
DDGVLAALDGGVPAACLVALARRGLEGDLKPEGRIMELLQVATCLEQICH
HADGKAACRQAEAHKVLAEELLTQLQHREIKHAAAAALMGLAVEKESKVNVM
LYAGVSLVLRMRGSDAELAAANRDVAAAAEHLEARRTAEMLLSMEREL
LLWRGPPPTPPDRYRHVLDKPFTPQAK

>RSP9 (DQ298249)
MVQLEPNI TLVLKHLASCQAVVSAEQQAALDHSIPIKRIEAGLRSLTLWG
RLTTLNGKDYLVABEYVNVASSKEGAAVYETKYYFSQDGARWSDLQPVDSSE
TATRCARIKGMLSGDPKAKNYLEEKDPNAPPEPSEAEVEVKPLVFQIPEL
AVLRCRVDAIATATSVIPTDSTI LNAASQVVPNRLFAGAAYPEKLESYQH
RFSLPGSGVTLSQDLRGTAVVQYDAFKGVAQRSLLPFGYFFYYAANELT
WGSLYVGDGLRNDLIFML

>RSP10 (DQ298250)
MADDELPPQPVWEGPLDEDGKPHGLGKMEYPPPPMGEDDEEEKPGDKFEG
TMEHGVRTGKGTYTGWVSGAVYTDYVNGKHKHGKMMVYDKGVYEGDWV
EDVMQGGQTYTYPNGDIYQGFVWAGKRHGKGMHYHKGCCQLVGDWADGG
FTYGRWYADGSMFMGKFGAAADSKPTAGSYFSSSSSLVQEGHFAKDG
WVGHDRPAVGKEFSVA

>RSP11 (DQ298251)
MDVEPIFCABEQIVI PHNLADILKAYTKEVIRRQPTDLIAFSAKYFTNLAN
VASGVSNSSAPAKEQLRQVYTRGGSGGATLTESQVTGLCQQAGIADAVVA
KVMEVGAFTA PAAVDL SKFVFLCLAMSCDEFNRVCMGVDFVDSNGSLPAQ
DLLTLIAHLGPDMDPEVTPAFLDVAVAELPAGGGAVTYMELCEAPSLKPK
LGLS

>RSP12 (DQ298252)
MDFESNDAMMEYCKSTGRTYCAFSIQQSKLLGTVVLEFTDIAPATCAN
FIKYIKDGYQQTPLHRIVPNGVQGGIVDGSGKDPGFVLPDETYSVKH
DAPGVLGMAATGGQPHANTQFYISLSPLFLDGKRVAFGRVLNKLQSLNLL
LALQTLPTFQNERPVPDVIASCHVIYNPNS

>RSP14 (DQ298253)
VWARDLAHQHSLDALAAALDPESEGVREAYGALIEAARFDSTRALEAC
GSGAVLPRLMELALLEAQGGAAGRAQQGLVLLFTCTQARHNAGILSQLVD
VAQAI PHLAGLKPPELMPVVRHAAELLGALATREDAKIQAVQVAVPLL
LLAASPVSVPFATSVAALGAI TIRREGKYAALES PGLLAGLVSLDPC
HEQLCINAMTAVSNVAEAPEARAILVASGAGPKLQHIFETATVEVVKRAA
AQAIRQCRFKHLPYEVLPGAPPINEE

>RSP17** (DQ298256)
MPWLRVFFPKDFDLREGQPVQPYQFFDVVQFLQEDTSVPPDWAAPNAY
FQLSFTQVHVPKDMVLATRI PRPPPPDGSIDVTADNSNLKPGNEKLMA
DILAFCSRVAFTFRARTWKDALPLVDLLRGLVAHLNHYTGAALVREQAK
KDAEALAAEKALKAWYDKQLEEMARARQYDEKLEAREAEELRMTLAE
DLTLQLRAEREKQLRSQATGLSQKKAAEAQLTLSRNLEHMQQQLDL
EAQRRAEALAGKAQMTAMSEQAASLRRRLAAAGAVVEALNAKTKEDAL
NVAVKALAGVL PAGESASYVAELRTAADVDGDDPSAALLAQAAAAPDPAAL
APALAAALRGVTPGMVSPALAAVAATHEQRAAQSDQGEVGAAGAAAGRR
RSSATGAAANLAAVISGAALNETKESLVFKYIKASKGHEFMI GEKLAWS
GASWEIVERGTPALVVPDVAAQGNMWFRRHKOPPAAPGGNYMAVPI LGTQ
GEVVGILAADTMGAAAAEAATAAAAGGADTTQGTRAAAAAAADTSVT
DAAFMRGLAAAI GARARADAEAYHEAMLAAAIAGEAPEPEPSAVDPSQF
VVGASGEAGEGGNLSGGLKLFADALSLLRELTDDELEALRNLDPEDDVTL
AVIKSILAAVGEIAGGEDWAARQHLSELLERLMSMDPQAAWAEWQALC
RAFRALNELSMASLDAASTAAADPSAAPSVRASGAFARWAAGVRAVSAAR
ALQVLEVLQKANAALMKTFSGDSCNALTELRSYRVPPPLTFVGLQCVL
MLSGNVDEEDCRNARMRTLANYRLIKRLVTLRPAQVPRKIFRAVKRLVH
DIVEGDVQKESVATLSLYRWLADPTRLASVAK
```

**Fig. 2** Predicted sequences of the 10 newly identified RSPs. The GenBank accession numbers for the nucleotides are listed in parentheses. Peptide sequences obtained from MS are in bold font. The underlined polypeptide sequences in RSP17 (asterisks) were described previously (Pazour et al., 2005). The N-terminal end of the RSP14 sequence is not complete.

Table 1. *Chlamydomonas* RSPs and predicted human homologs

RSP*	Number of peptides or Ref. <sup>†</sup>	pI/M <sub>r</sub> <sup>‡</sup> (2D-NEPHGE)	pI/M <sub>r</sub> <sup>‡</sup> (theoretical)	JGI v. 2.0 gene model or NCBI ID. <sup>§</sup>	Linkage group (and mutant)	Similar to H.s. ID. <sup>¶</sup>	H.s. Entrez Gene ID., chromosomal location	aligned region (a.a. no.)	NCBI-BlastP result % identity	% positive	E value
Newly identified RSPs (see Fig. 2 for peptide- and protein sequences)											
<b>RSP1</b>	11	5.2/123	4.55/78.6	C_120055	III	NP_543136 (metachrocin/TSGA2)	89765, 21q22.3	568-708	40	50	3e-21
<b>RSP5</b>	2	5.1/69	4.68/55.9	C_70095	XI/IXIII	NI					
<b>RSP7</b>	3	5.1/58	4.54/55	C_100190	VII	NI					
<b>RSP8</b>	7	6.5/40	5.76/40.5	C_30211	II	NI					
<b>RSP9</b>	3	5.7/26	5.02/29.5	C_450112	VII (p17)	NP_689945 (C6orf206)	221421, 6p21.1	7-269	29	45	1e-18
<b>RSP10</b>	2	5.6/24	5.02/23.5	C_900027	I	NP_543136 (TSGA2)	89765, 21q22.3	12-149	40	55	5e-25
<b>RSP11</b>	2	4.8/22	4.53/21.5	C_830019	X (p25)	NP_775836	222967, 7p22.2	45-211	28	47	2e-18
<b>RSP12</b>	6	6.3/20	5.46/19.7	C_20323	II	NP_114122 (ASP)	83853, 5p15.31	4-90	36	51	9e-07
<b>RSP14</b>	2	6.8/41	5.84/28.3	C_240045	XV	NI		2-165	38	54	1e-24
<b>RSP17</b>	3	6.2/124	5.56/98.5	C_420011	VII	NI					
Previously identified RSPs											
<b>RSP2</b>	Yang et al., 2004	5.0/18	4.48/77.4	AAO92371	X (p24)	NI					
<b>RSP3</b>	Williams et al., 1989	5.5/86	4.85/56.8	P12759	VI (p74)	NP_114130 (RSHL2)	83861, 6q25.3	11-306	47	66	2e-54
<b>RSP4</b>	Curry et al., 1992	5.1/76	4.58/49.8	A44498	V (p1)	XP_294004 (RSHL3)	345895, 6q22	6-425	32	48	4e-35
<b>RSP6</b>	Curry et al., 1992	5.1/67	4.53/48.8	B44498	V (p26)	NP_110412 (RSHL1)	81492, 19q13	6-463	32	45	2e-36
<b>RSP16</b>	Yang et al., 2005	7.1/54	6.78/39.0	C_490039	XI/IXIII	NP_110412 (RSHL1)	81492, 19q13	5-426	29	43	2e-45
<b>RSP20</b>	Zimmerer et al., 1988 (calmodulin)	4.3/18	4.3/18.3	AAA33083	III	NP_705842 (TSARG6)	374407, 11q13.3	4-311	41	57	6e-54
<b>RSP22</b>	King et al., 1995 (LC8)	6.8/8	6.89/10.3	Q39580	III	NP_006136 (DNAIB1)	3337, 19p13.2	4-306	38	54	1e-56
<b>RSP23</b>	Patel-King et al., 2004	5.4/102	4.67/61	AY452667	XVIII	Multiple	Multiple	7-91	94	98	2e-39
Incompletely characterized RSPs											
<b>RSP13</b>		6.3/98		NI							
<b>RSP15</b>	1	5.7/58		Bonus_Scaffold_7104**		NI					
<b>RSP18</b>	1	5.4/210		C_30269 to C_30270		NI					
<b>RSP19</b>	6	5.5/140	4.82/49.6	P04690		Multiple	Multiple	4-202	43	62	4e-34
<b>RSP21</b>		6.2/16		NI							

\*Radial spoke head proteins are indicated by bold characters.

<sup>†</sup>The number of peptide hits (see Fig. 2) is given for each newly identified protein; the reference is given for each previously identified protein.

<sup>‡</sup>pI and M<sub>r</sub> are from Piperno et al. (1981), Yang et al. (2001), and Patel-King et al. (2004).

<sup>§</sup>The JGI v. 2.0 gene model is given for each newly identified protein; the NCBI identification number is given for each previously identified protein.

<sup>¶</sup>H.s., *Homo sapiens*; NI, none identified

\*\*A more complete sequence for RSP15 is predicted by the gene model Genie.2667.0 in JGI v. 1.0.

Table 1 *Chlamydomonas* RSPs and predicted human homologs

For RSP15, MS/MS yielded a single high-scoring peptide sequence predicted by JGI v. 1.0 Genie.2667.0 and v. 2.0 Bonus\_Scaffold\_7104. Although the gene model is unlikely to be complete, the available sequence indicates that RSP15 is a leucine-rich

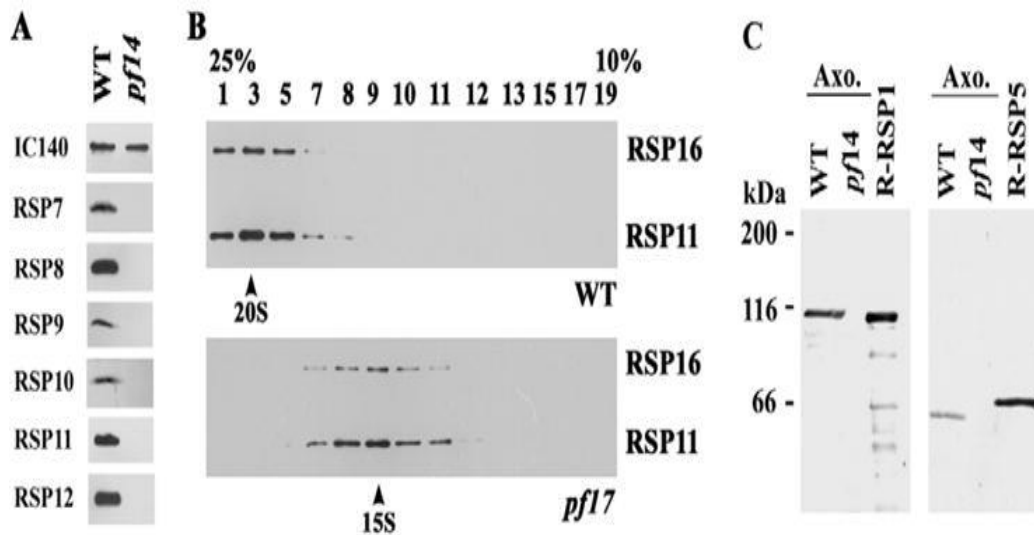
repeat (LRR) protein, probably homologous to the LRR protein in *Ciona intestinalis* radial spokes (Padma et al., 2003). A single high-scoring peptide for RSP18 matched JGI v. 2.0 genomic sequence between gene models C\_30269 and C\_30270.

The protein previously designated RSP19 co-sediments with 20S radial spokes and 15S spoke stalks (Yang et al., 2001), migrates at  $M_r \sim 140,000$  in SDS-PAGE, and has a pI similar to that of tubulin (Fig. 1). Six peptides from this spot were analyzed and all were identified as originating from  $\beta$ -tubulin. Western blot analysis confirmed that  $\beta$ -tubulin migrates as a discrete band at  $M_r \sim 140,000$  in SDS gels of radial spoke and spoke stalk fractions (Fig. S1, supplementary material). Although no non-tubulin peptides were identified from this spot, it is possible that  $\beta$ -tubulin is covalently associated with a spoke stalk protein whose peptides were not recovered. RSPs 13 and 21 were not identified because the MS/MS spectra obtained could not be matched to sequence in the *C. reinhardtii* databases. The theoretical molecular weights and isoelectric points for the predicted RSPs are consistent with the experimental values determined by 2D gel analyses (Table 1).

### *Validation of newly identified RSPs*

To confirm that the MS analysis identified the correct proteins, antibodies based on the predicted sequences were generated for six of the new proteins. Western blot analyses using these antibodies confirmed that the cloned proteins identified as RSPs 7, 8, 9, 10, 11 and 12 are missing in axonemes of the well-characterized spokeless mutant *pf14* (Fig. 3A), and that those identified as RSPs 7 and 11 cosediment with solubilized 20S radial spokes and 15S spoke stalks (Fig. 3B; results for RSP7 not shown). Antibodies previously shown specifically to recognize natural RSP1 and RSP5 (Williams et al., 1986; Qin et al., 2004) recognized bacterially expressed recombinant RSP1 and RSP5, respectively (Fig. 3C), confirming that these sequences have been correctly identified; as expected, the proteins recognized by these antibodies are also missing in axonemes of *pf14* (Fig. 3C). Finally, in a separate proteomic analysis of *C. reinhardtii* axonemal fractions, multiple peptide hits were obtained to sequences identified as RSPs 1, 5, 7, 8, 9, 10, 11, 12, 14, 15 and 17 (Pazour et al., 2005),

providing independent evidence that the predicted genes encode axonemal proteins.



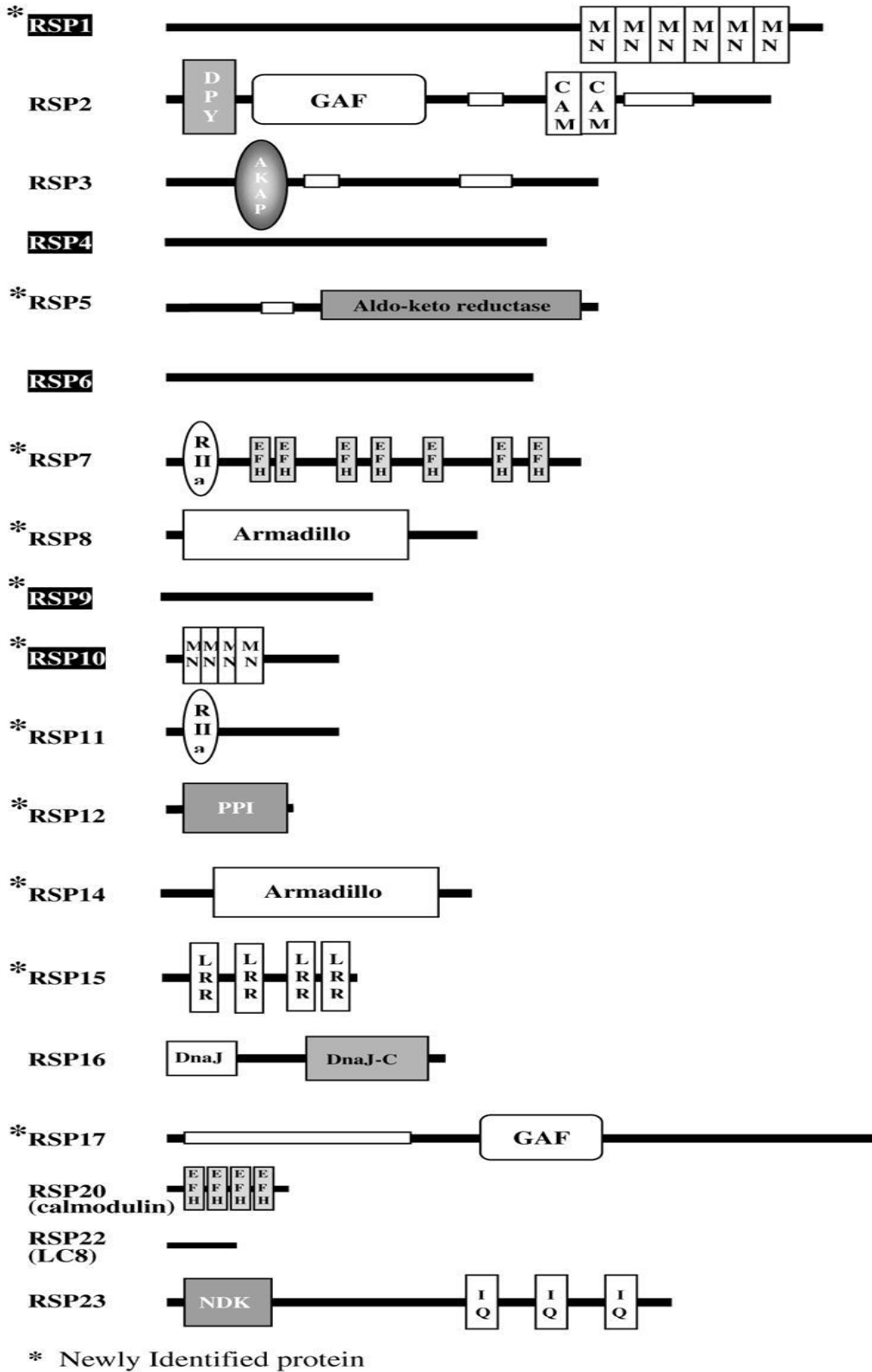
**Fig. 3** Confirmation that the MS analysis identified the correct RSPs. (A) Western blot showing that antibodies based on the sequences predicted for RSPs 7, 8, 9, 10, 11 and 12 recognize proteins present in wild-type (WT) axonemes but absent in axonemes from the spokeless mutant *pf14*. (B) Western blot of sucrose density gradient fractions showing that an antibody based on the sequence predicted for RSP11 recognizes a protein that co-sediments with solubilized 20S WT radial spokes (upper panel) or 15S spoke stalks from the spoke-head-less mutant *pf17* (lower panel). The blot was also probed with an antibody to RSP16 (Yang et al., 2005) as a marker for the 20S spokes and 15S spoke stalks. Similar results were obtained for RSP7 (data not shown). (C) Antibodies raised against RSPs 1 and 5 purified from spots on 2D gels recognize the recombinant proteins (R-RSP1 and R-RSP5). In addition, the recombinant proteins, which are His tagged, migrate at the expected size relative to the native proteins in WT axonemes. The proteins are absent in *pf14* axonemes.

### Predicted domains

The newly identified proteins were analyzed to identify predicted domains and structural motifs; these, together with those of the previously identified RSPs, are diagrammatically illustrated in Fig. 4. RSP1 has at least six MORN (for 'membrane occupation and recognition nexus') domains in its C-terminal half. RSP5 contains an aldoketo reductase domain and a short region that is predicted to form a coiled-coil domain. RSP7 has an RIIa domain and seven EF-hand domains, five of which match the consensus sequence for  $\text{Ca}^{2+}$  binding (PROSITE accession number PS00018) (Fig. 5). RSP8 has at least two

armadillo repeats. RSP9 has no obvious structural or functional domains. RSP10 has at least four MORN domains in its N-terminal half. RSP11 has an RIIa domain. RSP12 has a conserved cyclophilin/peptidyl-prolyl cis-trans isomerase (PPI) domain that includes most of the protein. RSP14 has at least three armadillo repeats. RSP15 has LRRs. RSP17 has a possible GAF domain (E-value, 5.21e-01; the GAF domain is named for its presence in cGMP-regulated phosphodiesterases, certain adenylyl cyclases and the bacterial transcription factor FhIA), as well as a predicted coiled-coil domain that is similar to those of some members of the intermediate filament superfamily. The possible significances of the predicted domains are addressed in the Discussion.





**Fig. 4** Predicted domain architecture in RSPs. MN, MORN domain; DPY, Dpy-30 motif; GAF, cyclic GMP, adenylyl cyclase, FhIA domain; CAM, 1-8-14 calmodulin-binding motif; AKAP, A-kinase anchoring protein motif; RIIa, RII alpha motif; EFH, EF-hand domain; PPI, peptidyl-prolyl isomerase motif; LRR, leucine-rich repeat; DnaJ and DnaJ-C, DnaJ-J and DnaJ-C molecular chaperone homology domains; NDK, nucleotide diphosphate kinase domain; IQ, IQ calmodulin-binding motif. Coiled-coil domains are indicated by an open bar. Spoke head proteins are indicated by white characters on a black background.

```

                X Y Z-Y-X -Z
EF1      96ILMKLFIEADADRSGFLDRHEFTAVLRNA124
                * * * * *
EF2     132QIRQILAEADENDDDVIQYKEFLPIMVDI160
                * * * * *
EF3     201LMLKVFKKADADGSGQLNRHEFKEALKAA229
                * * * * *
EF4     237DINLILSHIDVDRDGLVSYEEFIPVCFQV265
                * * * * *
EF7     439HMKAMFAAIDAESGTVDWTELVNFCDA467
                * * * * *
    
```

**Fig. 5** The five canonical EF-hand motifs in RSP7. An asterisk indicates a precise match to the Ca<sup>2+</sup>-binding loop consensus sequence D-x-[DNS]-{ILVFW}-[DENSTG]-[DNQGHRK]-{GP}-[LIVMC]-[DENQSTAGC]-x(2)-[DE]-[LIVMFYW], where x = any amino acid, [ ] = either/or, and { } = any amino acid except those in brackets (PROSITE accession number PS00018). The Ca<sup>2+</sup> ligands that contribute oxygen atoms are denoted as X, Y, Z, -Y, -X and -Z.

### Human homologs

BLAST searches were carried out for each RSP to identify homologs in other organisms. At least 12 of the RSPs have probable homologs in diverse other organisms. For each of these RSPs, Table 1 lists the representative human homolog and its chromosomal location, as well as the length of the aligned region, the percentage identity and similarity, and the BLAST E value. *C. reinhardtii* RSP1 is most similar to *Homo sapiens* meichroacidin, which is expressed primarily in the testis (Tsuchida et al., 1998); much of this similarity is a result of MORN repeats in both proteins. *C. reinhardtii* RSP3 is closely related to

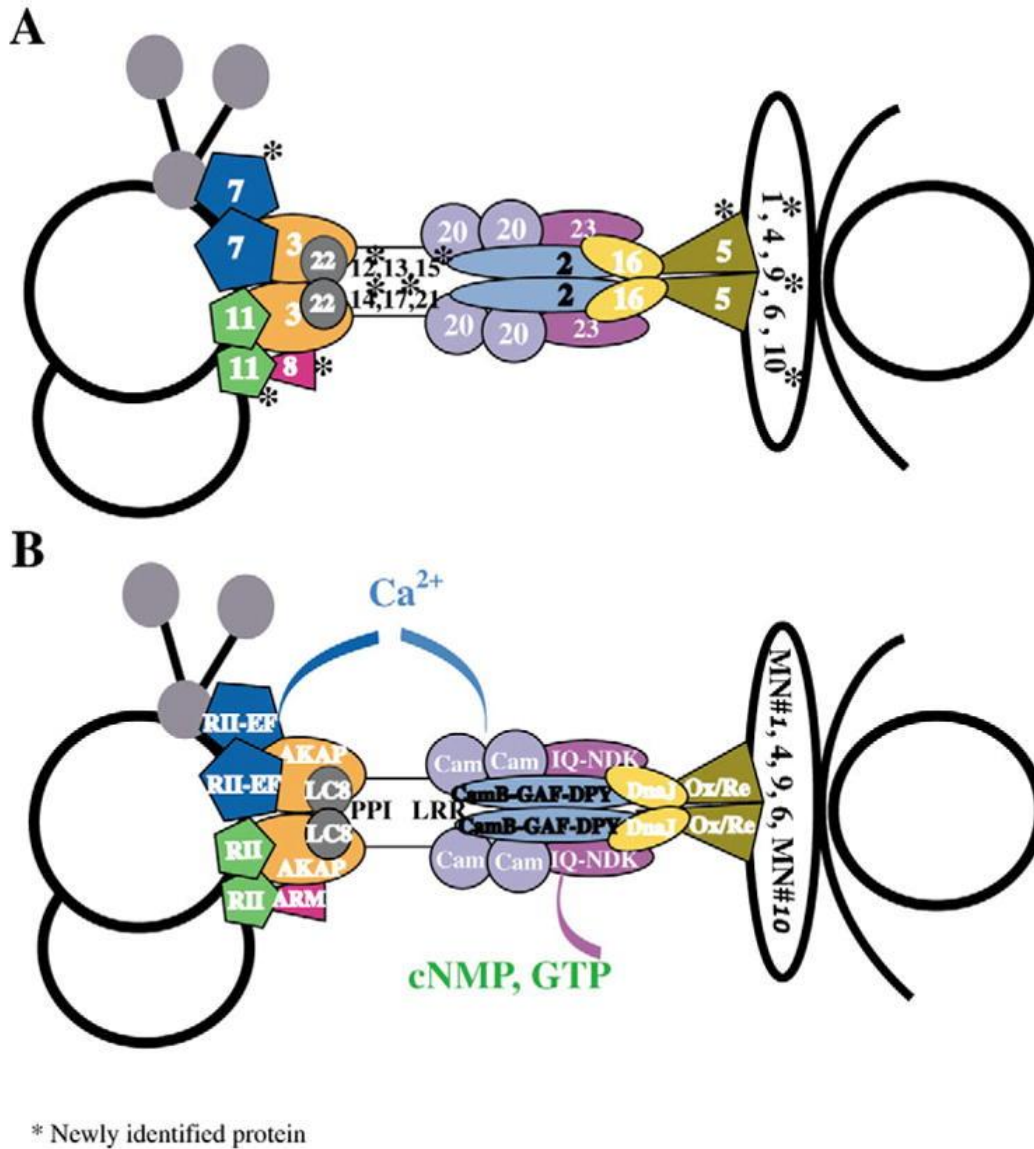
human radial spoke head-like protein RSHL2. *C. reinhardtii* RSP4 and RSP6, which are homologs of each other (Curry and Rosenbaum, 1992), are equally closely related to human RSHL1 and RSHL3; RSHL1 was previously identified as a homolog of *C. reinhardtii* RSP4/RSP6 (Eriksson et al., 2001). RSP9 is similar to an uncharacterized predicted protein encoded by human chromosome 6. RSP10, like RSP1, is similar to human meichroacidin, and also to a hypothetical protein encoded at 7p22.2; the similarities are due primarily to MORN repeats in all three proteins. RSP11 is weakly similar to the human AKAP-associated sperm protein ASP; this similarity is primarily in the RIIa domain. RSP12 is 38% identical throughout its length to the hypothetical human protein peptidyl-prolyl isomerase (cyclophilin)-like 6 (PPIL6). RSP16 is 41% identical over its entire length to the similarly sized human TSARG6 (for 'testis spermatogenesis apoptosis-related protein 6'); it is only slightly less similar to a human DnaJ (Hsp40) homolog. As previously reported, RSP20, RSP22 and RSP23 are homologous to human calmodulin, LC8 and testis-specific NDK, respectively. No highly similar human proteins were identified for RSPs 2, 5, 7, 8, 14 and 17.

## Discussion

### *Structural and functional domains*

Previous comparisons of *C. reinhardtii* mutants lacking the entire radial spoke or just the spoke head have allowed the RSPs to be assigned to either the spoke head or stalk (Piperno et al., 1977; Piperno et al., 1981). Because location within these two morphologically distinct subdomains is important in considering the proteins' structural and functional roles, the proteins of the spoke head and stalk are discussed separately here. Fig. 6 illustrates the predicted locations of the spoke proteins (Fig. 6A) and their domains (Fig. 6B) relative to spoke ultrastructure and proximity to the inner dynein arms and central microtubules. Strikingly, proteins in the spoke stalk (RSPs 2, 3, 5, 7, 8, 11, 12, 14, 15, 16, 17, 20 and 23) are rich in predicted functional motifs, including many associated with signal transduction, whereas proteins in the spoke head (RSPs 1, 4, 6, 9 and 10) contain no obvious functional motifs and few predicted structural motifs. The results suggest that the spoke stalk is likely to serve as a scaffold for signaling molecules, and probably has an important role in transducing chemical and mechanical signals.





**Fig. 6** Model for radial spoke structure. The diagram illustrates the probable locations of the RSPs (A) and their molecular modules (B) relative to a central pair microtubule (right) and an inner dynein arm on an outer doublet microtubule (left). LC8, dynein light chain 8; MN, MORN domain Ox/Re, aldo-keto reductase domain. The locations of the RSPs are based on studies of mutants (Huang et al., 1981; Patel-King et al., 2004; Yang et al., 2005) and chemical dissection of the spoke (Piperno et al., 1981); RSPs 18 and 19 are not included because of insufficient experimental evidence to locate them within the radial spoke. The stoichiometry of subunits is speculative but is based on the homodimerization of RSPs 3, 16 and 22 (Benashski et al., 1997; Yang et al., 2005) (W.S. and P.Y., unpublished data), the presence of homodimerization domains in RSPs 2, 7 and 11, and other data discussed in Yang et al. (Yang et al., 2004).

## *Spoke stalk proteins*

Spoke stalk proteins RSP7 and RSP11 have RIIa domains, which bind with high affinity to AKAP domains and also mediate homodimerization (Colledge and Scott, 1999). RSP3, which is located at the base of the spoke stalk (Diener et al., 1993), was previously shown to contain an AKAP domain that binds the RII regulatory subunit of PKA in vitro (Gaillard et al., 2001). Thus, it was proposed that RSP3 anchors PKA adjacent to inner arm dyneins to regulate their motor activity, a role consistent with the effects of PKA inhibitors on inter-doublet sliding velocity (Howard et al., 1994). However, no RSP was identified as the RII subunit. It is possible that RII dissociated from the radial spokes during the potassium iodide (KI) extraction used to isolate the spokes. Alternatively, the AKAP domain of RSP3 might interact with the RIIa domain of RSP7 and/or RSP11. Consistent with this, these two RIIa proteins co-sediment with RSP3 in partial spoke particles from the mutant *pf24* (Yang et al., 2005), in which the spokes are unstable and dissociate into subparticles when extracted from the axoneme. The unique motility phenotype of the RSP11 mutant *pf25*, which swims actively but in an abnormal fashion (Huang et al., 1981), suggests a regulatory role for this novel RIIa protein.

At least four spoke stalk proteins are likely to be involved in Ca<sup>2+</sup>-mediated signaling. RSP20 was previously identified as calmodulin (Yang et al., 2001). RSP2 binds calmodulin through 1-8-14 motifs (Yang et al., 2004), and RSP23, which contains an NDK domain, binds calmodulin through IQ motifs (Patel-King et al., 2004). The newly identified RSP7 contains five predicted EF-hands that match exactly the consensus for Ca<sup>2+</sup> binding (Fig. 5). Ca<sup>2+</sup> is a regulator of flagellar waveform in *Chlamydomonas* (Witman, 1993), and the radial spokes together with the central pair apparatus are predicted to be involved in the Ca<sup>2+</sup>-induced waveform changes (Brokaw et al., 1982; Smith, 2002). Thus, these RSPs might have a key role in the Ca<sup>2+</sup> control of flagellar motility.

RSPs 2 and 17 are predicted to contain GAF domains, which bind cyclic nucleotides or small ligands in many sensory and signaling proteins (Hurly, 2003). cAMP has been shown to inhibit the motility of demembrated, reactivated axonemes of *Chlamydomonas* (Hasegawa et al., 1987), and both cGMP and cAMP have been shown to affect

ciliary motility in detergent-permeabilized, reactivated *Paramecium* (Bonini and Nelson, 1988). It has been assumed that these effects are mediated by cAMP- and cGMP-dependent protein kinases. Therefore, it will be of great interest to determine whether cyclic nucleotides bind to the predicted GAF domains of these two RSPs and, if so, if the binding is responsible for any of the observed effects of cyclic nucleotides on flagellar motility.

Two spoke stalk proteins are predicted to function as molecular chaperones. RSP16 was previously shown to have conserved DnaJ-J and DnaJ-C domains found in the HSP40 (DnaJ) family of molecular chaperones (Yang et al., 2005; Satouh et al., 2005). HSP40 family members cooperate with HSP70 to suppress protein aggregation (Fink, 1999), and HSP70 is indeed present in the *C. reinhardtii* flagellum and concentrated at the flagellar tip (Bloch and Johnson, 1995), where final assembly of the spoke occurs (Qin et al., 2004). The newly identified RSP12 is predicted to be a member of the cyclophilin family of peptidyl-prolyl isomerases, which help protein folding by catalyzing proline cis-trans isomerization (Fink, 1999). Thus, these two co-chaperones might be involved in converting radial spoke precursors into mature spokes. In addition, the peptidyl-prolyl isomerase Pin1 has been shown to bind specifically to Ser-Pro or Thr-Pro motifs when the serine or threonine is phosphorylated (Yaffe et al., 1997), and then affect a conformational change that might alter the activity of the target protein (Zacchi et al., 2002; Zheng et al., 2002); other peptidyl-prolyl isomerases might function similarly (Ryan and Vousden, 2002). Spoke stalk proteins 2, 3, 5 and 17 are phosphorylated (Piperno et al., 1981), and have Ser-Pro and/or Thr-Pro motifs, so the possibility that RSP12 functions as a regulatory protein should be considered.

RSP5 consists of an aldo-keto reductase domain, which is common to a diverse family of oxidoreductases (Sanli et al., 2003). Outer arm dynein contains thioredoxin homologs with perfect copies of the redox-active site (Patel-King et al., 1996), and the Ca<sup>2+</sup>-binding activity of the DC3 subunit of the outer dynein arm docking complex is redox sensitive (Casey et al., 2003), suggesting that outer arm activity is regulated by the redox state of the cell. Radial spoke function might be similarly regulated through RSP5 to ensure coordination between the radial spokes and the outer arms.

RSP8 and RSP14 have armadillo repeats and RSP15 has LRRs, both of which are believed to function in protein-protein interactions. RSPs 2 and 17 are predicted to have long coiled-coil domains. Coiled coils commonly mediate homodimer and heterodimer formation (Lupas, 1996). Therefore, it is possible that these proteins form homodimers, or heterodimers with each other, through coiled coils. In either case, the coiled coils might form part of the structural framework of the spoke stalk, which is ~30 nm long and very thin (Witman et al., 1978). Assuming approximately 1.5 Å of coiled coil per amino acid residue (Fraser and MacRae, 1973), a coiled coil of 123 residues as predicted for RSP17 would be ~18 nm long and could account for over 60% of the length of the spoke stalk, whereas one of 103 residues as predicted for RSP2 would be ~15 nm long and could account for half of the length of the spoke stalk. RSP2 also contains a Dpy-30 motif, not previously reported, which might function in dimerization (<http://pfam.wustl.edu/cgi-bin/getdesc?name=Dpy-30>).

### *Spoke head proteins*

Among the five spoke head proteins, RSPs 1, 9 and 10 are newly identified. The latter two appear to be the orthologs of proteins recently reported in a spoke complex from *C. intestinalis* sperm (Satouh et al., 2005). In contrast to the spoke stalk proteins, the only domains identified in spoke head proteins are multiple MORN motifs present in RSP1 and RSP10. These motifs are thought to represent a protein folding module and, in the junctophilins, to mediate binding of the protein to the plasma membrane (Takeshima et al., 2000). It will be of interest to determine whether they mediate interactions between the spoke head and the central microtubule projections in the axoneme.

There is cytochemical evidence for ATPase activity in the center of the axoneme (Gordon and Barnett, 1967), and it has been postulated that interaction between the radial spoke and central pair might be mediated by an ATPase (Burton, 1973; Ogawa and Gibbons, 1976). Thus, it is interesting that none of the spoke head proteins resembles a known ATPase, or has motifs, such as a P-loop, associated with ATP binding and hydrolysis. If an ATPase is involved in these interactions, it is likely to be a component of the central pair complex. One such candidate is Klp1, a kinesin-like protein associated with a

projection of one of the central pair microtubules and thus in a position to contact the spoke heads (Bernstein et al., 1994; Yokoyama et al., 2004).

### *Relationship to PCD loci*

At least 12 RSPs appear to have homologs in other organisms, including *H. sapiens*, indicating that not only the structure, but also many of the proteins of the radial spoke have been conserved throughout evolution. The identification of probable human homologs for many of the RSPs provides new candidates for causing the human disease PCD, which involves missing or defective axonemal structures (Afzelius and Mossberg, 1995), including the radial spokes (Sturgess et al., 1979). Over 16 PCD loci have been mapped (Blouin et al., 2000; Jeganathan et al., 2004), including one at chromosomal region 19q13.3 (Blouin et al., 2000; Meeks et al., 2000). Eriksson et al. (Eriksson et al., 2001) previously noted that *RSHL1*, a human homolog of the closely related *C. reinhardtii* *RSP4* and *RSP6* genes, maps to 19q13.3, and therefore suggested that it was a candidate gene for PCD. However, Meeks et al. (Meeks et al., 2000) reported dynein arm deficiencies in two of the families used in their mapping of a PCD locus to 19q13.3, so it seems unlikely that the defect in these families involves an RSP gene. Some families have a PCD disease gene on chromosome 17 (Blouin et al., 2000), which contains a potential homolog of RSP10 at 7p22.2; however, defects in a dynein heavy chain gene at 7p21 are likely to be the cause of PCD in these families (Bartoloni et al., 2002). The gene encoding TSARG6, which is highly similar to RSP16, maps to 11q13.3; in some families, 11q potentially harbors a gene linked to situs inversus (Blouin et al., 2000), which is frequently associated with PCD. It would be of interest to examine the cilia and flagella of patients from these families for radial spoke defects. None of the other human homologs of *Chlamydomonas* RSP genes maps to known PCD loci, and no PCD gene that encodes an RSP has been identified yet. This undoubtedly reflects both a paucity of studies of PCD families with defects in radial spokes, and a hitherto lack of candidate PCD genes encoding RSPs. The identification here of eight new human genes that potentially encode RSPs should greatly facilitate discovery of the defective genes in future studies of such patients.

## Conclusion

The identification and sequence analysis of 10 *C. reinhardtii* RSPs previously known only as spots on 2D gels has yielded intriguing and important new information on predicted structural and functional domains within these proteins, consistent with the predicted role of the radial spoke as a major signal-transducing structure within the axoneme. This information provides a strong foundation for future studies on the roles of individual RSPs in radial spoke assembly and function, on protein-protein interactions within the radial spoke, and on how the radial spokes integrate both mechanical and chemical signals to ensure coordinated flagellar motility during a variety of behavior responses. Finally, the identification of homologs of *C. reinhardtii* RSPs in humans and other organisms indicates that the radial spoke is conserved at the molecular level, and provides new candidate genes for causing PCD in patients with defects in the radial spokes.

## Materials and Methods

### *Cell strains and culture*

*C. reinhardtii* wild-type strain CC125 and radial spoke mutant strains were obtained from the *Chlamydomonas* Genetics Center (Duke University, Durham, NC). The double mutant *pf28pf30* was obtained from G. Piperno (Mount Sinai School of Medicine, New York, NY); although the flagella of double mutants of outer and inner dynein arms are usually short (Hayashi et al., 2001), this strain of *pf28pf30* carries an uncharacterized suppressor mutation (LeDizet and Piperno, 1995) that allows assembly of full-length flagella. All cells were cultured as described (Yang et al., 2001). ESTs for RSPs 5, 7, 9 and 10 were obtained from the Kazusa DNA Research Institute, Japan.

### *Protein purification*

Isolation of flagella and axonemes, extraction of axonemes with 0.6 M KI, purification of 20S radial spokes and 15S spoke stalks, and 2D gel electrophoresis were carried out as described previously



(Williams et al., 1986; Yang et al., 2001). Briefly, 20S radial spokes were typically obtained from the double mutant *pf28pf30*, which lacks the ~20S dyneins. Proteins of the isolated radial spokes were separated by non-equilibrium pH gradient gel electrophoresis in tube gels using an ampholine range of pH 3.5–9.5. Proteins in the acidic portion (~pH 3.5–7.5) of the tube gels were further fractionated by SDS-PAGE in mini-gels followed by non-formaldehyde silver staining (BioRad Laboratories); 6, 10 or 12% polyacrylamide gels were used as necessary to obtain optimum separation of RSPs in the range of 15–200 kDa. For RSPs 9 and 10, spokes from the 20S fraction of the sucrose gradient were further purified by fast-performance liquid chromatography using a HiTrap Q (Pharmacia Biosciences) column. The eluted proteins were then separated by 1D SDS-PAGE.

### *Mass spectrometry*

Protein bands or spots excised from 2–8 silver-stained gels were digested with trypsin. The peptide mixture was then eluted and analyzed using a Kratos Analytical Axima CFR MALDI-TOF mass spectrometer (Shimadzu Biotech) to obtain a peptide mass fingerprint; selected peptides were further analyzed by MS/MS following post-source-decay to determine the sequence of the peptide. The MS and MS/MS data were then used to search a *C. reinhardtii* EST database (<http://www.chlamy.org/search.html>) and the *C. reinhardtii* genome (JGI v. 1.0 or v. 2.0, <http://genome.jgi-psf.org/chlre1/chlre1.home.html> or <http://genome.jgi-psf.org/chlre2/chlre2.home.html>, respectively) using the search algorithms ProteinProspector (<http://prospector.ucsf.edu>) and Mascot (<http://www.matrixscience.com>) to identify EST or genomic sequence that encoded each peptide. Matches to genomic sequence were examined to identify predicted gene models encoding the peptides, and to confirm that the peptides were predicted by the correct reading frame.

### *Gene and structural predictions and identification of human homologs*

Domains within proteins were predicted by the internet-available programs SMART (<http://smart.embl-heidelberg.de/>),

SUPERFAMILY (<http://supfam.mrc-lmb.cam.ac.uk/SUPERFAMILY/>), Scansite (<http://scansite.mit.edu/>), MOTIF (<http://motif.genome.jp/>) and COILS ([http://www.ch.embnet.org/software/COILS\\_form.html](http://www.ch.embnet.org/software/COILS_form.html)), using default parameters. The BLAST server at NCBI was used to search nucleotide and protein databases for the human homologs of *C. reinhardtii* RSPs.

### *DNA cloning and sequencing*

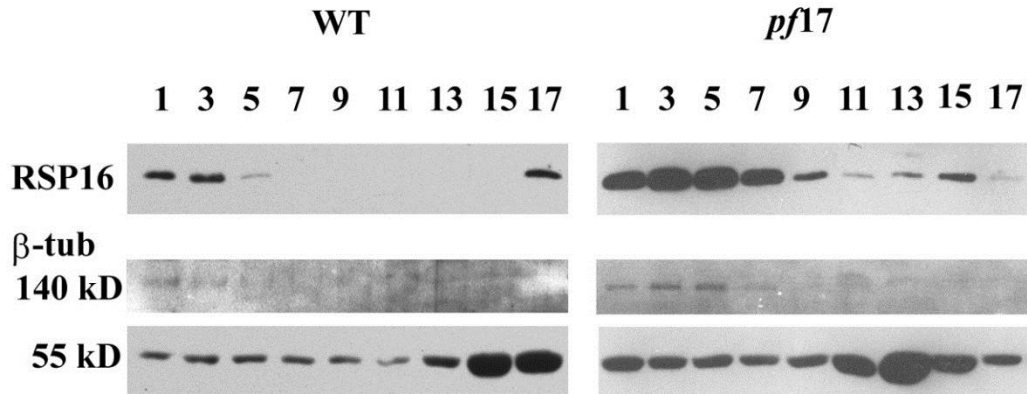
RT-PCR was carried out to confirm coding sequences and recover cDNA clones for RSPs 1, 5, 7, 8, 9, 10, 11, 12 and 14. 5'-rapid amplification of cDNA ends was used to obtain a portion of the RSP7 sequence that was not contained in the databases. The genomic clone RSb1, encoding RSP1 (Williams et al., 1986), was also sequenced and the sequence used to isolate a partial cDNA clone. All cloning and sequencing was carried out using standard procedures.

### *Antibodies*

Rabbit polyclonal antibodies were raised against bacterially expressed recombinant proteins (RSPs 7, 9, 10, 11 and 12) and a synthetic C-terminal peptide (RSP8). The rabbit antibody against recombinant RSP16 was described previously (Yang et al., 2005). The rabbit anti-RSP1 and anti-RSP5 sera, raised against the purified axonemal proteins, were previously described (Williams et al., 1986; Qin et al., 2004).



## Supplementary Material



**Fig. S1.** Western blot analysis shows that b-tubulin is present in a  $M_r \sim 140,000$  band that co-purifies with radial spokes and spoke stalks. The top panels show western blots of sucrose density gradient fractions of axonemal extracts from wild-type (WT) and the mutant *pf17* probed with an antibody to RSP16, which serves as a marker for 20S radial spokes from wild-type cells and 15S spoke stalks from the mutant. The lower panels show western blots of the same fractions probed with an anti-sea-urchin b-tubulin antibody (Sigma T0198). The antibody recognized a 140 kDa band that co-sedimented with the 20S radial spokes from wild-type and 15S spoke stalks from *pf17*. As expected, the antibody also recognized a 55 kDa band corresponding to monomeric b-tubulin. Note that the 140 kDa band is discrete, and not the result of upward smearing of monomeric tubulin due to gel overloading.

## Acknowledgments

We are grateful to John Leszyk of the UMMS Proteomic Mass Spectrometry Lab for MS of isolated RSPs. This work was supported by: the Japanese Ministry of Education, Culture, Sports, Science and Technology (R.K.); CREST of Japan Science and Technology Corporation (R.K.); National Institutes of Health grants GM068101 (P.Y.), GM60992 (G.J.P.), GM014642 (J.L.R.), GM51293 (S.M.K.), GM051173 (W.S.S.) and GM30626 (G.B.W.); National Science Foundation grant DBI-0139061 for Undergraduate Summer Research (J.M.D.); a Worcester Foundation for Biomedical Research Foundation Scholar Award (G.J.P.); March of Dimes Research Grant FY04-115 (W.S.S.); and the Robert W. Booth Fund at the Greater Worcester Community Foundation (G.B.W.). The UMMS Proteomic Mass Spectrometry Laboratory is partially supported by Grant Number 5 P30

DK32520 from the National Institute of Diabetes and Digestive and Kidney Diseases to the UMMS DERC.

## References

1. Afzelius BA, Mossberg B, Bergstrom SE. Immotile cilia syndrome (primary ciliary dyskinesia), including Kartagener syndrome. In: Scriver CR, Beaudet AL, Sly WS, Valle D, editors. *The Metabolic and Molecular Bases of Inherited Disease*. 8. Vol. 3. New York: McGraw-Hill; 2001. pp. 4817–4827.
2. Antonelli M, Modesti A, De Angelis M, Marcolini P, Lucarelli N, Crifo S. Immotile cilia syndrome: radial spokes deficiency in a patient with Kartagener's triad. *Acta Paediatr Scand*. 1981;70:571–573.
3. Asamizu E, Nakamura Y, Sato S, Fukuzawa H, Tabata S. A large scale structural analysis of cDNAs in a unicellular green alga, *Chlamydomonas reinhardtii* I Generation of 3433 non-redundant expressed sequence tags. *DNA Res*. 1999;6:369–373.
4. Bartoloni L, Blouin JL, Pan Y, Gehrig C, Maiti AK, Scamuffa N, Rossier C, Jorissen M, Armengot M, Meeks, et al. Mutations in the DNAH11 (axonemal heavy chain dynein type 11) gene cause one form of situs inversus totalis and most likely primary ciliary dyskinesia. *Proc Natl Acad Sci USA*. 2002;99:10282–10286.
5. Benashski SE, Harrison A, Patel-King RS, King SM. Dimerization of the highly conserved light chain shared by dynein and myosin V. *J Biol Chem*. 1997;272:20929–20935.
6. Bernstein M, Beech PL, Katz SG, Rosenbaum JL. A new kinesin-like protein (Klp1) localized to a single microtubule of the *Chlamydomonas* flagellum. *J Cell Biol*. 1994;125:1313–1326.
7. Bloch MA, Johnson KA. Identification of a molecular chaperone in the eukaryotic flagellum and its localization to the site of microtubule assembly. *J Cell Sci*. 1995;108:3541–3545.
8. Blouin JL, Meeks M, Radhakrishna U, Sainsbury A, Gehring C, Sail GD, Bartoloni L, Dombi V, O'Rawe A, Walne A, et al. Primary ciliary dyskinesia: a genome-wide linkage analysis reveals extensive locus heterogeneity. *Eur J Hum Genet*. 2000;8:109–118.

9. Bonini NM, Nelson DL. Differential regulation of *Paramecium* ciliary motility by cAMP and cGMP. *J Cell Biol.* 1988;106:1615–1623.
10. Brokaw CJ, Luck DJ, Huang B. Analysis of the movement of *Chlamydomonas* flagella: the function of the radial-spoke system is revealed by comparison of wild-type and mutant flagella. *J Cell Biol.* 1982;92:722–732.
11. Burton PR. Some structural and cytochemical observations on the axial filament complex of the lung-fluke spermatozoa. *J Morphol.* 1973;140:185–196.
12. Casey DM, Yagi T, Kamiya R, Witman GB. DC3, the smallest subunit of the *Chlamydomonas* flagellar outer dynein arm-docking complex, is a redox-sensitive calcium-binding protein. *J Biol Chem.* 2003;278:42652–42659.
13. Colledge M, Scott JD. AKAPs: from structure to function. *Trends Cell Biol.* 1999;9:216–221.
14. Curry AM, Rosenbaum JL. Flagellar radial spoke: a model molecular genetic system for studying organelle assembly. *Cell Motil Cytoskeleton.* 1993;24:224–232.
15. Curry AM, Williams BD, Rosenbaum JL. Sequence analysis reveals homology between two proteins of the flagellar radial spoke. *Mol Cell Biol.* 1992;12:3967–3977.
16. Diener DR, Ang LH, Rosenbaum JL. Assembly of flagellar radial spoke proteins in *Chlamydomonas*: identification of the axoneme binding domain of radial spoke protein 3. *J Cell Biol.* 1993;123:183–190.
17. Eriksson M, Ansved T, Anvret M, Carey N. A mammalian radial spokehead-like gene, RSHL1, at the myotonic dystrophy-1 locus. *Biochem Biophys Res Commun.* 2001;281:835–841.
18. Fink AL. Chaperone-mediated protein folding. *Physiol Rev.* 1999;79:425–449.
19. Fraser RDB, MacRae TP. *Conformation in Fibrous Proteins and Related Synthetic Polypeptides.* New York: Academic Press; 1973.
20. Gaillard AR, Diener DR, Rosenbaum JL, Sale WS. Flagellar radial spoke protein 3 is an A-kinase anchoring protein (AKAP) *J Cell Biol.* 2001;153:443–448.

21. Goodenough UW, Heuser JE. Substructure of inner dynein arms, radial spokes, and the central pair projection complex. *J Cell Biol.* 1985;100:2008–2018.
22. Gordon M, Barrnett RJ. Fine structural cytochemical localizations of phosphatase activities of rat and guinea pig. *Exp Cell Res.* 1967;48:395–412.
23. Hasegawa E, Hayashi H, Asakura S, Kamiya R. Stimulation of *in vitro* motility of *Chlamydomonas* axonemes by inhibition of cAMP-dependent phosphorylation. *Cell Motil Cytoskeleton.* 1987;8:302–311.
24. Hayashi M, Hirono M, Kamiya R. Recovery of flagellar dynein function in a *Chlamydomonas* actin/dynein-deficient mutant upon introduction of muscle actin by electroporation. *Cell Motil Cytoskeleton.* 2001;49:146–153.
25. Howard DR, Habermacher G, Glass DB, Smith EF, Sale WS. Regulation of *Chlamydomonas* flagellar dynein by an axonemal protein kinase. *J Cell Biol.* 1994;127:1683–1692.
26. Huang B, Piperno G, Ramanis Z, Luck DJ. Radial spokes of *Chlamydomonas* flagella: genetic analysis of assembly and function. *J Cell Biol.* 1981;88:80–88.
27. Huang B, Ramanis Z, Luck DJ. Suppressor mutations in *Chlamydomonas* reveal a regulatory mechanism for flagellar function. *Cell.* 1982;28:115–124.
28. Hurley JH. GAF domains: cyclic nucleotides come full circle. *Sci STKE.* 2003;164:PE1.
29. Jeganathan D, Chodhari R, Meeks M, Faeroe O, Smyth D, Nielsen K, Amirav I, Luder AS, Bisgaard H, Gardiner RM, et al. Loci for primary ciliary dyskinesia map to chromosome 16p12.1–12.2 and 15q13.1–15.1 in Faroe Islands and Israeli Druze genetic isolates. *J Med Genet.* 2004;41:233–240.
30. Kamiya R. Extrusion and rotation of the central-pair microtubules in detergent-treated *Chlamydomonas* flagella. *Cell Motil.* 1982;1:S169–S173.
31. King SM, Patel-King RS. The M(r)=8,000 and 11,000 outer arm dynein light chains from *Chlamydomonas* flagella have cytoplasmic homologues. *J Biol Chem.* 1995;270:11445–11452.

32. LeDizet M, Piperno G. The light chain p28 associates with a subset of inner dynein arm heavy chains in *Chlamydomonas* axonemes. *Mol Biol Cell*. 1995;6:697–711.
33. Lupas A. Prediction and analysis of coiled-coil structures. *Methods Enzymol*. 1996;266:513–525.
34. Meeks M, Walne A, Spiden S, Simpson H, Mussaffi-Georgy H, Hamam HD, Fehaid EL, Cheehab M, Al-Dabbagh M, Polak-Charcon S, et al. A locus for primary ciliary dyskinesia maps to chromosome 19q. *J Med Genet*. 2000;37:241–244.
35. Mitchell DR, Nakatsugawa M. Bend propagation drives central pair rotation in *Chlamydomonas reinhardtii* flagella. *J Cell Biol*. 2004;166:709–715.
36. Ogawa K, Gibbons IR. Dynein 2. A new adenosine triphosphatase from sea urchin sperm flagella. *J Biol Chem*. 1976;251:5793–5801.
37. Omoto CK, Gibbons IR, Kamiya R, Shingyoji C, Takahashi K, Witman GB. Rotation of the central pair microtubules in eukaryotic flagella. *Mol Biol Cell*. 1999;10:1–4.
38. Padma P, Satouh Y, Wakabayashi K, Hozumi A, Ushimara Y, Kamiya R, Inaba K. Identification of a novel leucine rich repeat protein as a component of the flagellar radial spoke in Ascidian *Ciona intestinalis*. *Mol Biol Cell*. 2003;14:774–785.
39. Patel-King RS, Benashki SE, Harrison A, King SM. Two functional thioredoxins containing redox-sensitive vicinal dithiols from the *Chlamydomonas* outer dynein arm. *J Biol Chem*. 1996;271:6283–6291.
40. Patel-King RS, Gorbatyuk O, Takebe S, King SM. Flagellar radial spokes contain a Ca<sup>2+</sup>-stimulated nucleoside diphosphate kinase. *Mol Biol Cell*. 2004;15:3891–3902.
41. Pazour GJ, Agrin N, Leszyk J, Witman GB. Proteomic analysis of a eukaryotic cilium. *J Cell Biol*. 2005;170:103–113.
42. Piperno G, Huang B, Luck DJ. Two-dimensional analysis of flagellar proteins from wild-type and paralyzed mutants of *Chlamydomonas reinhardtii*. *Proc Natl Acad Sci USA*. 1977;74:1600–1604. [PMC free article] [PubMed]

43. Piperno G, Huang B, Ramanis Z, Luck DJ. Radial spokes of *Chlamydomonas* flagella: polypeptide composition and phosphorylation of stalk components. *J Cell Biol.* 1981;88:73–79. [PMC free article] [PubMed]
44. Porter ME, Sale WS. The 9 + 2 axoneme anchors multiple inner arm dyneins and a network of kinases and phosphatases that control motility. *J Cell Biol.* 2000;151:F37–F42. [PMC free article] [PubMed]
45. Qin H, Diener DR, Geimer S, Cole DG, Rosenbaum JL. Intraflagellar transport (IFT) cargo: IFT transports flagellar precursors to the tip and turnover products to the cell body. *J Cell Biol.* 2004;164:255–266. [PMC free article] [PubMed]
46. Ryan KM, Vousden KH. Pinning a change on p53. *Nature.* 2002;419:795–797. [PubMed]
47. Sanli G, Dudley JI, Blaber M. Structural biology of the aldo-keto reductase family of enzymes: catalysis and cofactor binding. *Cell Biochem Biophys.* 2003;38:79–101. [PubMed]
48. Satouh Y, Padma P, Toda T, Satoh N, Ide H, Inaba K. Molecular characterization of radial spoke subcomplex containing radial spoke protein 3 and heat shock protein 40 in sperm flagella of the ascidian *Ciona intestinalis*. *Mol Biol Cell.* 2005;16:626–636. [PMC free article] [PubMed]
49. Shrager J, Hauser C, Chang CW, Harris EH, Davies J, McDermott J, Tamse R, Zhang Z, Grossman AR. *Chlamydomonas reinhardtii* genome project. A guide to the generation and use of the cDNA information. *Plant Physiol.* 2003;131:401–408. [PMC free article] [PubMed]
50. Smith EF. Regulation of flagellar dynein by calcium and a role for an axonemal calmodulin and calmodulin-dependent kinase. *Mol Biol Cell.* 2002;13:3303–3313. [PMC free article] [PubMed]
51. Smith EF, Sale WS. Regulation of dynein-driven microtubule sliding by the radial spokes in flagella. *Science.* 1992;257:1557–1559. [PubMed]
52. Smith EF, Yang P. The radial spokes and central apparatus: mechano-chemical sensors that regulate flagellar motility. *Cell Motil Cytoskeleton.* 2004;57:8–17. [PMC free article] [PubMed]

53. Sturgess JM, Chao J, Wong J, Aspin N, Turner JA. Cilia with defective radial spokes: a cause of human respiratory disease. *New Engl J Med.* 1979;300:53–56. [PubMed]
54. Takeshima H, Komazaki S, Nishi M, Iino M, Kangawa K. Junctophilins: a novel family of junctional membrane complex proteins. *Mol Cell.* 2000;6:11–22. [PubMed]
55. Tsuchida J, Nishina Y, Wakabayashi N, Nozaki M, Sakai Y, Nishimune Y. Molecular cloning and characterization of meichroacidin (male meiotic metaphase chromosome-associated acidic protein) *Dev Biol.* 1998;197:67–76. [PubMed]
56. Warner FD, Satir P. The structural basis of ciliary bend formation. *J Cell Biol.* 1974;63:35–63. [PMC free article] [PubMed]
57. Williams BD, Mitchell DR, Rosenbaum JL. Molecular cloning and expression of flagellar radial spoke and dynein genes of *Chlamydomonas*. *J Cell Biol.* 1986;103:1–11. [PMC free article] [PubMed]
58. Williams BD, Velleca MA, Curry AM, Rosenbaum JL. Molecular cloning and sequence analysis of the *Chlamydomonas* gene coding for radial spoke protein 3, flagellar mutation *pf-14* is an ochre allele. *J Cell Biol.* 1989;109:235–245. [PMC free article] [PubMed]
59. Witman GB. *Chlamydomonas* phototaxis. *Trends Cell Biol.* 1993;3:403–408. [PubMed]
60. Witman GB, Plummer J, Sander G. *Chlamydomonas* flagellar mutants lacking radial spokes and central tubules. *J Cell Biol.* 1978;76:729–747. [PMC free article] [PubMed]
61. Yaffe MB, Schutkowski M, Shen M, Zhou XZ, Stukenberg PT, Rahfeld JU, Xu J, Kuang J, Kirschner MW, Fischer G, et al. Sequence-specific and phosphorylation-dependent proline isomerization: a potential mitotic regulatory mechanism. *Science.* 1997;278:1957–1960. [PubMed]
62. Yang C, Compton MM, Yang P. Dimeric novel HSP40 is incorporated into the radial spoke complex during the assembly process in flagella. *Mol Biol Cell.* 2005;16:637–648. [PMC free article] [PubMed]
63. Yang P, Diener DR, Rosenbaum JL, Sale WS. Localization of calmodulin and dynein light chain LC8 in flagellar radial spokes. *J Cell Biol.* 2001;153:1315–1326. [PMC free article] [PubMed]

64. Yang P, Yang C, Sale WS. Flagellar radial spoke protein 2 is a calmodulin binding protein required for motility in *Chlamydomonas reinhardtii*. *Eukaryot Cell*. 2004;3:72–81. [PMC free article] [PubMed]
65. Yokoyama R, O'toole E, Ghosh S, Mitchell DR. Regulation of flagellar dynein activity by a central pair kinesin. *Proc Natl Acad Sci USA*. 2004;101:17398–17403. [PMC free article] [PubMed]
66. Zacchi P, Gostissa M, Uchida T, Salvagno C, Avollo F, Bolinia S, Ronai Z, Blandino G, Schneider C, Del Sal G. The prolyl isomerase Pin1 reveals a mechanism to control p53 functions after genotoxic insults. *Nature*. 2002;419:853–857. [PubMed]
67. Zheng H, You H, Zhou XZ, Murray SA, Uchida T, Wulf G, Gu L, Tang X, Lu KP, Xiao ZXJ. The prolyl isomerase Pin1 is a regulator of p53 in genotoxic response. *Nature*. 2002;419:849–853. [PubMed]
68. Zimmer WE, Schloss JA, Silflow CD, Youngblom J, Watterson DM. Structural organization, DNA sequence, and expression of the calmodulin gene. *J Biol Chem*. 1988;263:19370–19383. [PubMed]

## About the Authors

Pinfen Yang : Email: [pinfen.yang@marquette.edu](mailto:pinfen.yang@marquette.edu)