

2018

# Rapid coastal deoxygenation due to ocean circulation shift in the northwest Atlantic

Mariona Claret

Eric D. Galbraith

*See next page for additional authors*

Follow this and additional works at: <https://digitalcommons.uri.edu/gsofacpubs>

**The University of Rhode Island Faculty have made this article openly available.  
Please let us know how Open Access to this research benefits you.**

This is a pre-publication author manuscript of the final, published article.

## Terms of Use

This article is made available under the terms and conditions applicable towards Open Access Policy Articles, as set forth in our [Terms of Use](#).

---

## Citation/Publisher Attribution

Claret, M., Galbraith, E. D., Palter, J. B., Bianchi, D., Fennel, K., Gilbert, D., & Dunne, J. P. (2018). Rapid coastal deoxygenation due to ocean circulation shift in the northwest Atlantic. *Nature Climate Change*, 8, 868-872. doi: 10.1038/s41558-018-0263-1  
Available at: <http://dx.doi.org/10.1038/s41558-018-0263-1>

This Article is brought to you for free and open access by the Graduate School of Oceanography at DigitalCommons@URI. It has been accepted for inclusion in Graduate School of Oceanography Faculty Publications by an authorized administrator of DigitalCommons@URI. For more information, please contact [digitalcommons@etal.uri.edu](mailto:digitalcommons@etal.uri.edu).

---

**Authors**

Mariona Claret, Eric D. Galbraith, Jaime B. Palter, Daniele Bianchi, Katja Fennel, Denis Gilbert, and John P. Dunne

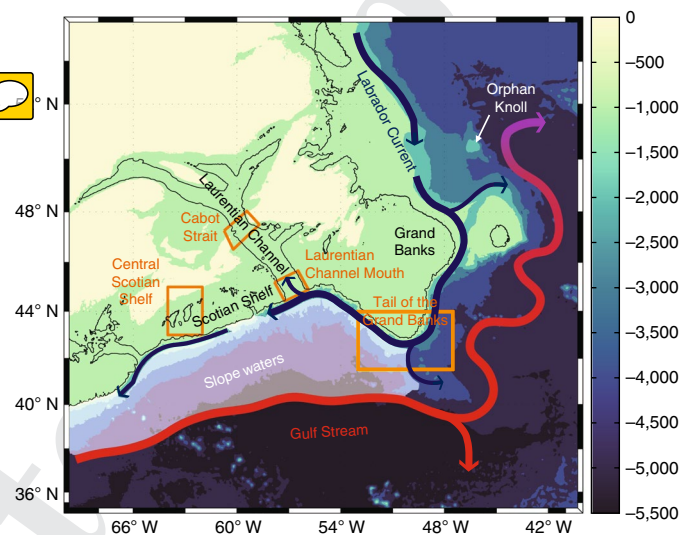
# Rapid coastal deoxygenation due to ocean circulation shift in the NW Atlantic

Mariona Claret<sup>1,2,3\*</sup>, Eric D. Galbraith<sup>4,5,3</sup>, Jaime B. Palter<sup>6</sup>, Daniele Bianchi<sup>7</sup>, Katja Fennel<sup>8</sup>, Denis Gilbert<sup>9</sup> and John P. Dunne<sup>10</sup>

Global observations show that the ocean lost approximately 2% of its oxygen inventory over the past five decades<sup>1–3</sup>, with important implications for marine ecosystems<sup>4,5</sup>. The rate of change varies with northwest Atlantic coastal waters, which show a long-term drop<sup>6,7</sup> that vastly outpaces the global and North Atlantic basin mean deoxygenation rates<sup>5,8</sup>. However, past work has been unable to resolve the mechanisms of large-scale climate forcing from local processes. Here we use hydrographic evidence to show that the Labrador Current retreat is playing a key role in the deoxygenation on the northwest Atlantic shelf. A high-resolution global coupled climate-biogeochemistry model<sup>9</sup> reproduces the observed decline of saturation oxygen concentrations in the region, driven by a retreat of the equatorward-flowing Labrador Current and an associated shift towards more oxygen-poor subtropical waters on the shelf. The dynamic changes that underlie the shift in shelf-water properties are correlated with a slowdown in the simulated Atlantic Meridional Overturning Circulation (AMOC)<sup>10</sup>. Our results provide strong evidence that a major, centennial-scale change of the Labrador Current is underway, and highlight the potential for ocean dynamics to impact coastal deoxygenation over the coming century.

There is wide consensus that the global ocean oxygen ( $O_2$ ) concentration is decreasing, and will continue to do so over the next century due to global warming<sup>11,12</sup>. Thus far, the  $O_2$  inventory of the North Atlantic basin has not followed the general trend<sup>3</sup>, but has, instead, shown a marked spatial variability driven by natural climate oscillations<sup>13,14</sup> that approximately balance over the whole basin<sup>15</sup>. However, despite the muted historical change for the North Atlantic on average, dramatic long-term deoxygenation trends have been reported over the past century on the northwest Atlantic shelf<sup>5,7,16</sup> (Fig. 1), a region that hosts a highly productive benthic ecosystem.

The recent deoxygenation trends are also recorded in marine sediments in the region<sup>17,18</sup>, where they stand out as unique occurrences over the past millennium, and palaeoceanographic records document warming, salinification and changing nutrient supply on the Scotian Shelf during the past century<sup>19–21</sup>. It has been speculated that these coastal changes reflect variations in the large-scale offshore circulation that involves the Gulf Stream, which transports oxygen-poor tropical and subtropical water masses northward, and the Labrador Current, which transports well-oxygenated water masses southward<sup>7,20</sup>. However, it has been

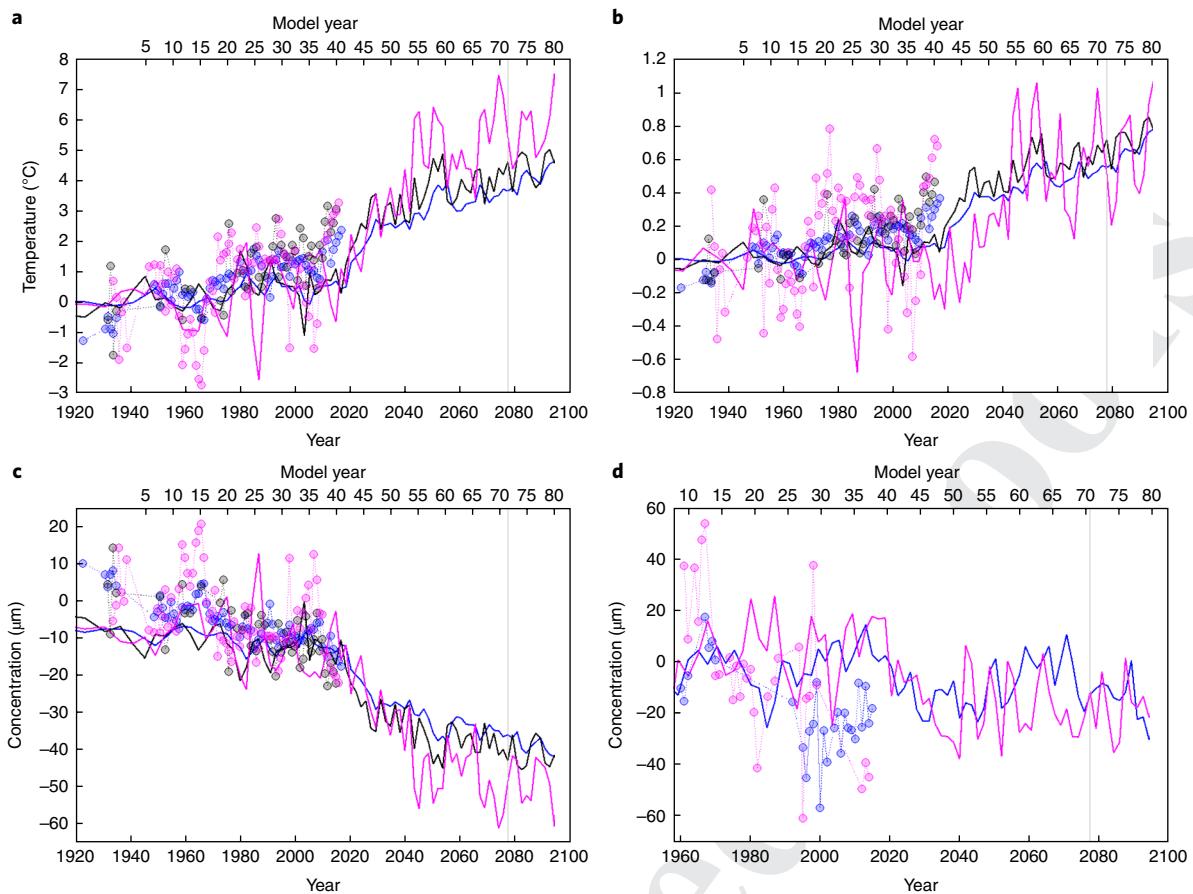


**Fig. 1 | Schematic of the large-scale circulation in the northwest Atlantic.** Labrador Current waters flow equatorward along the shelf break. At the Grand Banks, the Labrador Current must take a sharp right-hand (westward) turn to flow along the shelf break and maintain a direct advective connection with the slope water region at the offshore edge of the Scotian Shelf and Laurentian Channel. Circulation on the slope mixes well-oxygenated Labrador Slope Water with oxygen-poor subtropical waters<sup>31</sup>. In turn, slope water masses (white shading) and circulation influence water properties on the continental shelf<sup>28</sup>. Bathymetry is indicated by colours (m) and the 200 m isobath as the solid contour. Circulation schematics follow the geostrophic currents<sup>32</sup>.

difficult to piece together the observations given their sparsity, and both the ocean dynamics and biogeochemistry in this complex region are not well represented by the coarse resolution typical of global climate models<sup>22–24</sup>, which leaves the underlying mechanisms poorly understood.

Figure 2 shows an updated historical time series for three well-studied sites on the Scotian Shelf and in the Gulf of Saint Lawrence that confirms the continued trajectories of previously reported trends<sup>6,7,16</sup>. Although the observations show large decadal-scale

<sup>1</sup>Joint Institute for the Study of the Atmosphere and the Ocean, Seattle, WA, USA. <sup>2</sup>University of Washington, Seattle, WA, USA. <sup>3</sup>Department of Earth and Planetary Sciences, McGill University, Montréal, Québec City, Canada. <sup>4</sup>Institució Catalana de Recerca i Estudis Avançats (ICREA), Barcelona, Spain. <sup>5</sup>Institut de Ciència i Tecnologia Ambientals, Universitat Autònoma de Barcelona, Bellaterra, Barcelona, Spain. <sup>6</sup>Graduate School of Oceanography, University of Rhode Island, Narragansett, RI, USA. <sup>7</sup>Department of Atmospheric and Oceanic Sciences, University of California, Los Angeles, CA, USA. <sup>8</sup>Department of Oceanography, Dalhousie University, Halifax, Nova Scotia, Canada. <sup>9</sup>Maurice Lamontagne Institute, Fisheries and Oceans Canada, Mont-Joli, Québec City, Canada. <sup>10</sup>NOAA Geophysical Fluid Dynamics Laboratory, Princeton, NJ, USA. \*e-mail: [mclaret@uw.edu](mailto:mclaret@uw.edu)



**Fig. 2 | Warming, salinity increase and deoxygenation in the coastal northwest Atlantic.** **a–d.** Observational anomaly time series (filled circles) show the change in potential temperature referenced to the surface ( $\theta$ ) (**a**), salinity ( $S$ ) (**b**),  $O_2^{\text{sat}}$  (**c**) and oxygen ( $O_2$ ) (**d**) on the isopycnal  $\sigma_\theta = 27.25 \text{ kg m}^{-3}$  at Cabot Strait (blue lines), the Laurentian Channel Mouth (black lines), and at 150 m in the central Scotian Shelf (magenta lines). Anomalies are relative to a time average computed between 1920 and 1960 for  $\theta$ ,  $S$  and  $O_2^{\text{sat}}$ . For  $O_2$ , the time average is between 1960 and 1970 at Cabot Strait and between 1961 and 1999 at the central Scotian Shelf. Standard error bars are given in Supplementary Figs. 1 and 2. The time series of change at the corresponding model locations (solid lines) are shown on a transformed time axis (upper axis) that roughly corresponds to the historical  $\text{CO}_2$  trajectory (Methods). The vertical grey lines in each panel denote the year at which the modelled atmospheric  $p_{\text{CO}_2}$  relative to the preindustrial value. Observed and modelled trends for each property at each location are provided in Supplementary Figs. 1 and 2. The depth evolution of isopycnal  $\sigma_\theta = 27.25 \text{ kg m}^{-3}$  at CS and the LCM is shown in Supplementary Fig. 8.

variability, the long-term average rate of  $O_2$  decline at Cabot Strait was  $-0.51 \pm 0.24 \mu\text{M yr}^{-1}$  between 1960 and 2015 on isopycnal  $\sigma_\theta = 27.25 \text{ kg m}^{-3}$ , whereas on the Central Scotian Shelf it was  $-1.19 \pm 0.45 \mu\text{M yr}^{-1}$  between 1961 and 2014 at a 150 m depth, more than twice as fast (Supplementary Fig. 1). The  $O_2$  trend at Cabot Strait is indistinguishable from the trend of  $-0.5 \mu\text{M yr}^{-1}$  between 1958 and 2015 recently estimated from World Ocean Atlas data in waters of 100–400 m depth in the open ocean, south of the Scotian Shelf<sup>3</sup>. Oxygen concentrations can be conceptualized as the difference between an oxygen saturation concentration ( $O_2^{\text{sat}}$ ) equal to the oxygen concentration the waters would have in equilibrium with the atmosphere given their temperature and salinity, and the apparent oxygen utilization (AOU) due to the consumption of oxygen by heterotrophic organisms, such that  $O_2 = O_2^{\text{sat}} - \text{AOU}$ . The trends of  $O_2^{\text{sat}}$  are similar at the three sites (Fig. 2c (filled circles) and Supplementary Fig. 1), which reflects comparable trends of temperature and salinity (Fig. 2a,b (filled circles) and Supplementary Fig. 2). This similarity implies that the main difference behind the large change on the Scotian Shelf, relative to the Cabot Strait, is due to differences in the AOU.

To characterize the dynamics behind this dramatic historical deoxygenation, we analysed a high-resolution global coupled

climate model forced by an idealized  $\text{CO}_2$ -driven global warming scenario (Methods). This model faithfully captures critical aspects of the northwest Atlantic circulation as it specifically reduces a warm bias on the Scotian Shelf that is common to coarse resolution models in which the Gulf Stream extends too far north<sup>23</sup>. Moreover, it simulates a spatial pattern of surface cooling in the subpolar North Atlantic and warming on the Scotian Shelf that agrees well with historical observations; in the simulation, this pattern of sea surface temperature change is linked to a slowing of the AMOC<sup>10</sup>.

The model reproduces the general  $O_2^{\text{sat}}$  decline associated with increasing temperature and salinity at the three sites (solid lines in Fig. 2a–c). Thus, the model reveals a potential mechanism for the rapid deoxygenation observed on the Scotian Shelf: a change in the large-scale ocean circulation that shifts the balance of water masses in the region. However, the model does not reproduce the long-term decline of oxygen concentrations at the two sites at which measurements are available. The constant total oxygen concentration simulated at these sites by the model reflects a compensation of the  $O_2^{\text{sat}}$  decline by a similar decrease in AOU. Thus, it appears that the model captures the broad hydrographic change and  $O_2^{\text{sat}}$  decrease well, and also simulates a process that slows oxygen utilization (and

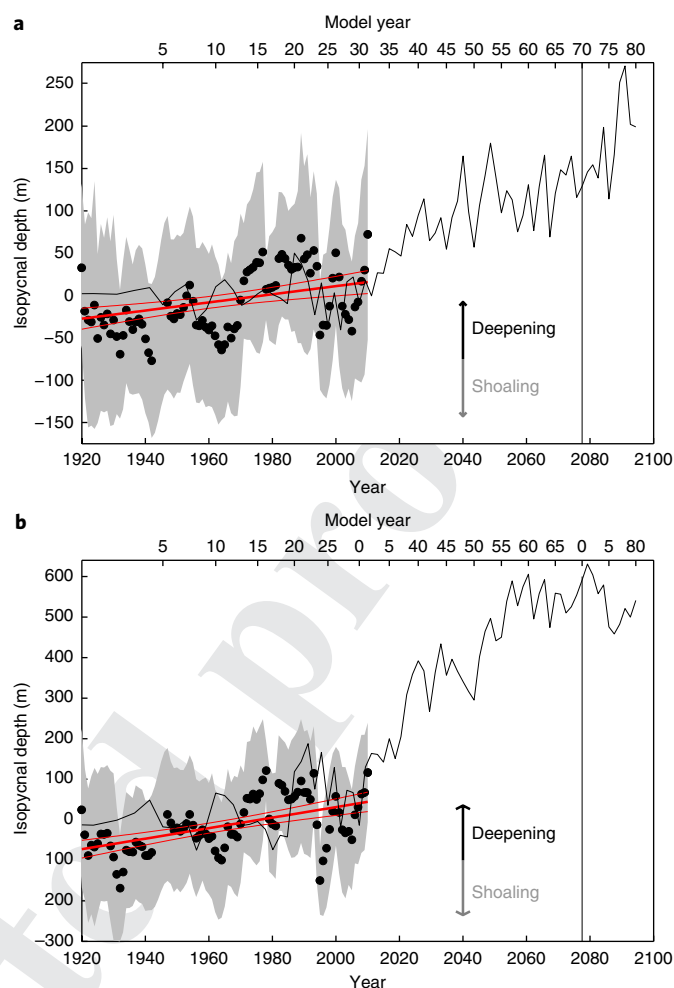
130 thereby reduces AOU) that was not operating in nature during the  
131 historical period.

132 The northwest Atlantic shelf is thought to be particularly sensi-  
133 tive to climate variability due to its position near the crossroads of  
134 the subtropical and subpolar circulation at the nearby Grand Banks  
135 of Newfoundland (Fig. 1), an underwater plateau that forces the  
136 Labrador Current to take a sharp right-hand turn to continue its  
137 trajectory as a western boundary current in contact with the shelf  
138 break. An association was previously found between the water  
139 column properties at the Tail of the Grand Banks (TGB) (that is,  
140 its southeastern tip (Fig. 1)), the position of the Gulf Stream and  
141 the strength of the AMOC in observations and models<sup>10,23,25,26</sup>:  
142 warmer temperatures at the TGB correspond to a more northward  
143 Gulf Stream trajectory and a weaker AMOC. Moreover, decadal  
144 variability in the Labrador Current transport around the TGB to  
145 the Scotian Shelf<sup>27</sup>, including to the Laurentian Channel Mouth<sup>28</sup>,  
146 was found to influence the properties of the slope waters (that is,  
147 water masses at depths greater than 200 m and less than 3,000 m,  
148 shaded white in Fig. 1). As half of the O<sub>2</sub> decline on the northwest  
149 Atlantic shelf was shown to be due to a rising proportion of oxygen-  
150 poor subtropical waters<sup>7</sup>, we hypothesized that the rapid twentieth  
151 century O<sub>2</sub> decline was due to a retreat of the Labrador Current and  
152 the increasing presence of Gulf Stream waters at the TGB.

153 To test for this dynamical change, we calculated the historical  
154 depths of two subsurface isopycnals at the TGB from high-quality  
155 observations in the Hydrobase data repository (Methods). Both iso-  
156 pycnals shoal by more than 700 m from the subtropical side of the  
157 Gulf Stream to the core of the Labrador Current (Supplementary  
158 Fig. 3); thus, a reduced presence of the Labrador Current at the  
159 TGB is expected to result in a deepening of these isopycnals over  
160 time. Indeed, the data show the isopycnal that enters the Laurentian  
161 Channel ( $\sigma_\theta = 27.25 \text{ kg m}^{-3}$ ) deepened at the TGB by  $0.48 \pm 0.2 \text{ m yr}^{-1}$   
162 between 1920 and 2010 (filled circles in Fig. 3a), and an even faster  
163 deepening trend occurred on the denser isopycnal ( $\sigma_1 = 32.2 \text{ kg m}^{-3}$ )  
164 with a rate of  $1.30 \pm 0.36 \text{ m yr}^{-1}$  over the same time period (filled  
165 circles in Fig. 3b). The simulated isopycnals in the same region also  
166 deepen as the model responds to the warming effect of an atmos-  
167 pheric CO<sub>2</sub> increase (solid lines in Fig. 3).

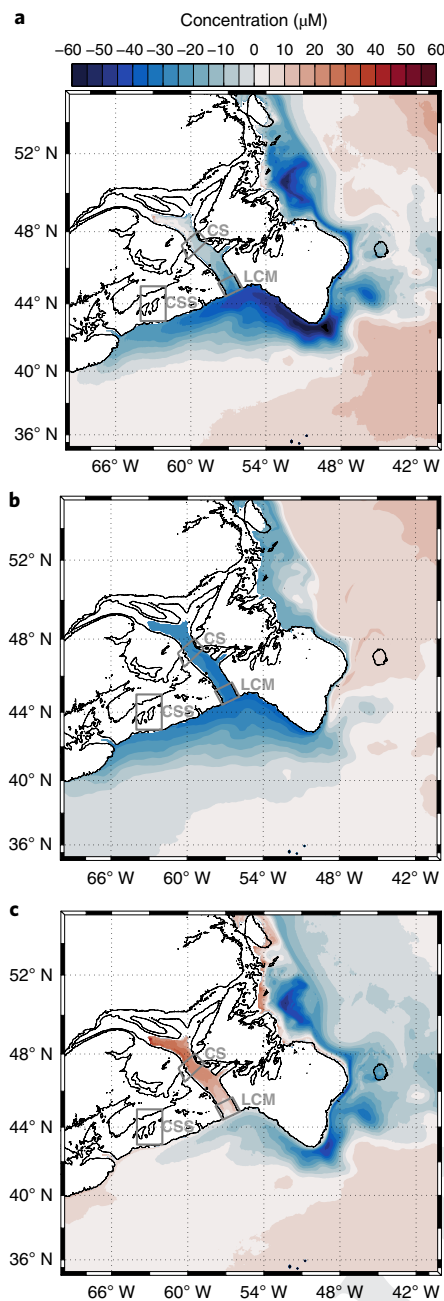
168 The deepening of isopycnals reflects a buoyancy gain by the  
169 upper water column, due to an increase in buoyant subtropical  
170 waters relative to dense subpolar waters, consistent with the mod-  
171 elled change in horizontal circulation (Supplementary Fig. 4).  
172 Under doubled CO<sub>2</sub>, the simulated Labrador Current weakens by  
173 as much as 8–10 Sv (1 Sv  $\equiv 10^6 \text{ m}^3 \text{ s}^{-1}$  (definition in Methods) north  
174 of the Grand Banks, as it approaches Orphan Knoll (Supplementary  
175 Fig. 4). Associated with this reduced transport, the boundary  
176 between the cyclonic subpolar circulation and anticyclonic Gulf  
177 Stream migrates north, which increases the probability that the Gulf  
178 Stream and/or its associated eddies impinge on the TGB. The shift  
179 in the Gulf Stream position and the Labrador Current slowdown is  
180 associated with a weakening of the AMOC<sup>10,23</sup>, both of which may  
181 also be related to a weakening of the wind stress curl on the sub-  
182 polar gyre simulated by the climate model (Supplementary Fig. 5).  
183 An important association between the large-scale wind field and  
184 the northward excursions of the Gulf Stream is supported by recent  
185 findings that show that the variability in northwest Atlantic shelf  
186 waters correlates with the interannual variability in the wind stress,  
187 with the mean position of the Gulf Stream being closely tied to  
188 the mean zero wind stress curl line<sup>28</sup>. The consistency between the  
189 observations and the simulation strongly suggests that a climate-  
190 driven dynamical shift, towards enhanced impingement of the Gulf  
191 Stream on the TGB, is at least partly responsible for the shrinking  
192 influence of the Labrador Current waters and the associated deoxy-  
193 genation of the Scotian Shelf and Gulf of St Lawrence.

194 Given that the simulated retreat of the Labrador Current and  
195 decrease of O<sub>2</sub><sup>sat</sup> under warming appear to be consistent with the



**Fig. 3 | Two isopycnal depth anomalies at the TGB. a,b**,  $\sigma_\theta = 27.25 \text{ kg m}^{-3}$  (a) and  $\sigma_1 = 32.2 \text{ kg m}^{-3}$  (b). Observations (filled circles) are three-year averages from the region shown in Fig. 1, calculated using springtime (April, May and June) data only, and are plotted with their s.d. (shaded area). Also shown is a linear regression (thick red line) for each, with the associated 95% confidence intervals (thin red lines). Model-simulated isopycnal depth anomalies, averaged over the same region for the warming simulation using the transformed time axis (see Fig. 2 caption) are shown as solid black lines. A positive change in isopycnal depth corresponds to isopycnal deepening, interpreted as a gain of buoyant subtropical waters above the given isopycnal. Methods gives the details.

observed historical changes, we provide further analysis of the impacts on oxygen concentrations under continued warming as an indication of potential future trends (red lines in Supplementary Figs. 1 and 2). Focusing on an isopycnal surface, as the modelled Labrador Current continues to retreat, the supply of well-oxygenated waters rounding the TGB dwindles (Supplementary Video) and a large decrease of oxygen occurs throughout the coastal region, but with significant spatial variation (Fig. 4). The modelled O<sub>2</sub><sup>sat</sup> concentrations decrease throughout the coastal region as the waters of a given density become warmer and saltier. This decrease is most pronounced where the isopycnal impinges on the continental shelf and within the Laurentian Channel (Fig. 4b). The coastal O<sub>2</sub><sup>sat</sup> decrease is amplified by increases of AOU to cause large O<sub>2</sub> decreases along the path of the Labrador Current and around the margin of the Grand Banks. However, it is opposed by AOU decreases (Fig. 4c) in the more southern coastal regions and Laurentian Channel, which mitigates the simulated O<sub>2</sub> decrease (Fig. 4a).



**Fig. 4 | Supplementary a,b**, Isopycnal maps on  $\sigma_{\theta} = 27.25 \text{ kg m}^{-3}$  of the oxygen ( $\text{O}_2$ ) change (**a**) and its decomposition into changes of  $\text{O}_2^{\text{sat}}$  (**b**) and AOU (**c**). The differences are computed relative to the control preindustrial experiment and averaged over the last 20 model years. The locations for the time series shown in Fig. 2 are enclosed within grey polygons. LCM, Laurentian Channel Mouth; CS, Cabot Strait; CSS, central Scotian Shelf.

warming, and an increase in the end member AOU as the intensified near-surface stratification impedes the formation of newly ventilated waters (Supplementary Fig. 6). A long-term trend towards a reduced ventilation and the retreat of Labrador Current waters is consistent with palaeoceanographic reconstructions that show a slowdown of the AMOC and reduced ventilation in the Labrador Sea, where the Labrador Current is formed, prior to the twentieth century<sup>21</sup>. As a result of these dynamic changes, the  $\text{O}_2^{\text{sat}}$  change is as much as  $-32.8 \mu\text{M}$  in the northwest Atlantic slope and the Laurentian Channel (Fig. 4b and Supplementary Table 2), whereas the average  $\text{O}_2^{\text{sat}}$  decline in the upper North Atlantic (above 300 m depth) in the warming simulation is only  $-6.3 \mu\text{M}$ . In contrast, the simulated AOU decrease is in direct disagreement with historical records (Fig. 2 and Supplementary Fig. 1). This disagreement reflects a decrease in respiration rates along the pathway of the circulation between the end members (Supplementary Table 2), due to a reduction of simulated nutrient supply to the surface. The model inaccuracy probably arises from the relative simplicity of the biogeochemical model, which lacks many features, such as anthropogenic nutrient inputs and interactions with the benthos. We therefore expect that future  $\text{O}_2$  declines in this region may be significantly larger than simulated by the model, and could feasibly exceed the reduction in saturation.

The deoxygenation observed in the northwest Atlantic shelf is already altering the regional ecosystem<sup>16,29</sup> and, as shown by our results, is likely to become much more pronounced with continued global warming. These results emphasize the importance that open ocean dynamics can play in regional oxygen changes<sup>5</sup> and explain the quasi-centennial  $\text{O}_2^{\text{sat}}$  trends of about  $-0.21 \pm 0.03 \mu\text{M yr}^{-1}$ , as observed between 1923 and 2017 in the Gulf of St Lawrence (Supplementary Fig. 1). This change in saturation concentration alone is more than double the total oxygen trend reported over the past 50 years in the upper layers of the North Atlantic, being  $-0.075 \mu\text{M yr}^{-1}$  averaged above 1,200 m (ref. <sup>2</sup>) and about  $-0.099 \mu\text{M yr}^{-1}$  for the upper and intermediate waters<sup>15</sup>. Yet, given the pronounced decadal variability (Fig. 2), even the strong local trends in the Scotian Shelf would be undetectable without long observational time series. Moreover, because local circulation dynamics are difficult to resolve in global models, they may harbour surprises in other coastal regions. Finally, we speculate that the decline of oxygen concentrations on the northwest Atlantic shelf is a sensitive indicator of large-scale dynamical shifts offshore, which are potentially linked with a centennial-scale slowdown of the AMOC<sup>10</sup> and may ultimately influence the oxygen variability of the open North Atlantic<sup>30</sup>.

## Methods

Methods, including statements of data availability and any associated accession codes and references, are available at <https://doi.org/10.1038/s41558-018-0263-1>.

Received: 15 January 2018; Accepted: 27 July 2018;

## References

- Helm, K. P., Bindoff, N. L., & Church, J. A. Observed decreases in oxygen content of the global ocean. *Geophys. Res. Lett.* **38**, L23602 (2011).
- Schmidtko, S., Stramma, L. & Visbeck, M. Decline in global oceanic oxygen content during the past five decades. *Nature* **542**, 335–339 (2017).
- Ito, T., Minobe, S., Long, M. C. & Deutsch, C. Upper ocean  $\text{O}_2$  trends: 1958–2015. *Geophys. Res. Lett.* **44**, 4214–4223 (2017).
- Breitburg, D. et al. Declining oxygen in the global ocean and coastal waters. *Science* **359**, eaam7240 (2018).
- Levin, L. A. Manifestation, drivers, and emergence of open ocean deoxygenation. *Ann. Rev. Mar. Sci.* **10**, 229–260 (2018).
- Petrie, B. & Yeats, P. Annual and interannual variability of nutrients and their estimated fluxes in the Scotian Shelf—Gulf of Maine region. *Can. J. Fish. Aquat. Sci.* **57**, 2536–2546 (2000).

196 Further mechanistic understanding of the simulated  $\text{O}_2^{\text{sat}}$  and  
 197 AOU changes are provided by a water-mass mixing model on an  
 198 isopycnal surface ( Supplementary Information). This approach  
 199 shows that the deoxygenation is primarily driven by a shift in  
 200 ocean circulation, with additional contributions from warming  
 201 and reduced ventilation of the Labrador Current end member.  
 202 Taking the Laurentian Channel Mouth as a representative site, we  
 203 found that the Labrador Current retreat drives about two-thirds  
 204 of the simulated oxygen loss (Supplementary Tables 1–3). The  
 205 remaining changes are caused by changes in the Labrador Current  
 206 end-member properties that result from a decrease in  $\text{O}_2^{\text{sat}}$  due to

7. Gilbert, D., Sundby, B., Gobeil, C., Mucci, A. & Tremblay, G.-H. A seventy-two-year record of diminishing deep-water oxygen in the St. Lawrence estuary: the northwest Atlantic connection. *Limnol. Oceanogr.* **50**, 1654–1666 (2005).
8. Gilbert, D., Rabalais, N. N., Daz, R. J. & Zhang, J. Evidence for greater oxygen decline rates in the coastal ocean than in the open ocean. *Biogeosciences* **7**, 2283–2296 (2010).
9. Dufour, C. O. et al. Role of mesoscale eddies in cross-frontal transport of heat and biogeochemical tracers in the Southern Ocean. *J. Phys. Oceanogr.* **45**, 3057–3081 (2015).
10. Caesar, L., Rahmstorf, S., Robinson, A., Feulner, G. & Saba, V. Observed fingerprint of a weakening Atlantic Ocean overturning circulation. *Nature* **556**, 191–196 (2018).
11. Keeling, R. F., Körtzinger, A. & Gruber, N. Ocean deoxygenation in a warming world. *Ann. Rev. Mar. Sci.* **2**, 199–229 (2010).
12. Long, M. C., Deutsch, C. & Ito, T. Finding forced trends in oceanic oxygen. *Glob. Biogeochem. Cy.* **30**, 381–397 (2016).
13. Johnson, G. C. & Gruber, N. Decadal water mass variations along 20°W in the Northeastern Atlantic Ocean. *Prog. Oceanogr.* **73**, 277–295 (2007).
14. Frölicher, T. L., Joos, F., Plattner, G.-K., Steinacher, M. & Dooney, S. C. Natural variability and anthropogenic trends in oceanic oxygen in a coupled carbon cycle-climate model ensemble. *Glob. Biogeochem. Cy.* **23**, GB1003 (2009).
15. Stando, I. & Gruber, N. Oxygen trends over five decades in the North Atlantic. *J. Geophys. Res. Oceans* **117**, C11004 (2012).
16. Brennan, C. E., Blanchard, H. & Fennel, K. Putting temperature and oxygen thresholds of marine animals in context of environmental change: a regional perspective for the Scotian Shelf and Gulf of St. Lawrence. *PLoS ONE* **11**, 1–27 (2016).
17. Thibodeau, B., de Vernal, A., Hillaire-Marcel, C. & Mucci, A. Twentieth century warming in deep waters of the Gulf of St. Lawrence: a unique feature of the last millennium. *Geophys. Res. Lett.* **37**, L17604 (2010).
18. Genovesi, L. et al. Recent changes in bottom water oxygenation and temperature in the Gulf of St. Lawrence: micropaleontological and geochemical evidence. *Limnol. Oceanogr.* **56**, 1319–1329 (2011).
19. Keigwin, L., Sachs, J. & Rosenthal, Y. A 1600-year history of the Labrador Current off Nova Scotia. *Clim. Dynam.* **12**, 53–62 (2003).
20. Sherwood, O. A., Lehmann, M. F., Schubert, C. J., Scott, D. B. & McCarthy, M. D. Nutrient regime shift in the western North Atlantic indicated by compound-specific  $\delta^{15}\text{N}$  of deep-sea gorgonian corals. *Proc. Natl Acad. Sci. USA* **108**, 1011–1015 (2011).
21. Thornalley, D. J. R. et al. Anomalously weak Labrador Sea convection and Atlantic overturning during the past 150 years. *Nature* **556**, 227–230 (2018).
22. Loder, J. W., van der Baaren, A. & Yashayaev, I. Climate comparisons and change projections for the Northwest Atlantic from six CMIP5 models. *Atmos. Ocean* **53**, 529–555 (2015).
23. Saba, V. S. et al. Enhanced warming of the Northwest Atlantic Ocean under climate change. *J. Geophys. Res. Oceans* **121**, 118–132 (2016).
24. Lavoie, D., Lambert, N. & Gilbert, D. Projections of future trends in biogeochemical conditions in the northwest Atlantic using CMIP5 Earth system models. *Atmos. Ocean* **0**, 1–23 (2017).
25. Joyce, T. M. & Zhang, R. On the path of the Gulf Stream and the Atlantic Meridional Overturning Circulation. *J. Clim.* **23**, 3146–3154 (2010).
26. Buckley, M. W. & Marshall, J. Observations, inferences, and mechanisms of the Atlantic Meridional Overturning Circulation: a review. *Rev. Geophys.* **54**, 5–63 (2016).
27. Petrie, B. & Drinkwater, K. Temperature and salinity variability on the Scotian Shelf and in the Gulf of Maine 1945–1990. *J. Geophys. Res. Oceans* **98**, 20079–20089 (1993).
28. Peterson, I., Greenan, B., Gilbert, D. & Hebert, D. Variability and wind forcing of ocean temperature and thermal fronts in the Slope Water region of the Northwest Atlantic. *J. Geophys. Res. Oceans* **122**, 7325–7343 (2017).
29. Bianucci, L., Fennel, K., Chabot, D., Shackell, N. & Lavoie, D. Ocean biogeochemical models as management tools: a case study for Atlantic wolfish and declining oxygen. *ICES J. Mar. Sci.* **73**, 263–274 (2016).
30. Tagklis, F., Bracco, A. & Ito, T. Physically driven patchy O<sub>2</sub> changes in the North Atlantic Ocean simulated by the CMIP5 Earth system models. *Glob. Biogeochem. Cy.* **31**, 1218–1235 (2017).
31. Gatiem, M. G. A study in the slope water region south of Halifax. *J. Fish Res. Board Can.* **33**, 2213–2217 (1976).
32. Bisagni, J. J., Gangopadhyay, A. & Sanchez-Franks, A. Secular change and inter-annual variability of the Gulf Stream position, 1993–2013, 70°–55°W. *Deep Sea Res. I* **125**, 1–10 (2017).

### Acknowledgements

The authors thank A. Cogswell and R. Pettipas from Fisheries and Oceans Canada for providing hydrographic data in the central Scotian Shelf and ~~to~~ Brennan for providing the data for the oxygen time series in the central Scotian Shelf. The authors also acknowledge many scientists at NOAA GFDL that configured and ran the climate model, without whose efforts this work would not have been possible. This project has received funding from the European Research Council under the European Union's Horizon 2020 research and innovation programme (grant no. 682602). E.D.G. acknowledges financial support from the Spanish Ministry of Economy and Competitiveness through the Mara de Maeztu Programme for Centres/Units of Excellence (MDM-2015-0552). The Canadian Foundation for Innovation provided the computing resources for model analysis. D.B. acknowledges support from NOAA grant NA15NOS4780186.

### Author contributions

E.D.G., J.B.P. and D.B. conceived the study. M.C., D.G. and K.F. assembled and analysed the observational data. M.C. and D.B. performed the model output analyses. J.P.D. participated in the design of the CM2.6-miniBLING experiments. M.C., E.D.G., J.B.P. and D.B. wrote the first draft of the manuscript. All the authors discussed the results and provided input to the manuscript.

### Competing interests

The authors declare no competing interests.

### Additional information

**Supplementary information** is available for this paper at <https://doi.org/10.1038/s41558-018-0263-1>.

**Reprints and permissions information** is available at [www.nature.com/reprints](http://www.nature.com/reprints).

**Correspondence and requests for materials** should be addressed to M.C.

**Publisher's note:** Springer Nature remains neutral with regard to jurisdictional claims in published maps and institutional affiliations.

## Methods

**Observational data, instrument accuracy and analyses.** Hydrographic data for Cabot Strait and the Laurentian Channel Mouth are compiled and quality controlled by the Bedford Institute of Oceanography. Temperature data were sampled before 1943 using reversing thermometers mounted on bottles (accuracy  $\pm 0.1^\circ\text{C}$ ), after 1943 using mechanical bathythermographs (accuracy  $\pm 0.1^\circ\text{C}$ ) and from 1969 onward a variety of conductivity–temperature–depth (CTD) models were used with accuracy of  $\pm 0.01^\circ\text{C}$  or better<sup>7</sup>. Salinity data before 1969 were sampled from bottles (accuracy  $\pm 0.05$ ) and after 1969 using CTDs (accuracy of  $\pm 0.01$  or higher)<sup>7</sup>. Oxygen data are developed, maintained and quality controlled by Fisheries Ocean Canada. These oxygen data were measured using Winkler titrations with an accuracy of  $\pm 0.3\text{--}5\ \mu\text{M}$  (ref. 7). Time series are constructed by spatially averaging data interpolated on isopycnal  $\sigma_\theta = 27.25\ \text{kg m}^{-3}$  over areas delimited by four coordinate pairs (Fig. 1). For Cabot Strait these are (60.74°W, 47.26°N), (59.43°W, 48.03°N), (58.70°W, 47.50°N) and (60.22°W, 46.52°N), and for the Laurentian Channel Mouth they are (57.83°W, 45.20°N), (57.24°W, 44.42°N), (55.86°W, 44.88°N) and (56.46°W, 45.67°N).

At the central Scotian Shelf, hydrographic data are quality controlled by Fisheries Ocean Canada. Before late 1960s, temperature and salinity data were sampled using bottles with typical accuracies of  $\pm 0.01^\circ\text{C}$  and  $\pm 0.01\text{--}0.03$  (ref. 33), respectively. In the mid-to-late 1960s, hydrographic measurements were made with an early CTD that had an accuracy of  $\pm 0.01^\circ\text{C}$  for temperature and  $\pm 0.01$  for salinity, which improved to  $\pm 0.001^\circ\text{C}$  for temperature and  $\pm 0.003$  for salinity with the introduction of modern CTDs in the late 1980s (B. Petrie, personal communication). Oxygen data are compiled and quality controlled by C. E. Brennan. Oxygen data between 1961 and 1999 were measured using Winkler titration (the standard accuracy for this method performed on ships using bottle samples is  $\pm 0.9\text{--}1.8\ \mu\text{M}$  (ref. 33)) and between January 2012 and December 2014 were measured using Aanderaa optodes mounted on benthic pods (accuracy of  $\pm 8\ \mu\text{M}$  with a two-point calibration (C. E. Brennan, personal communication)). The hydrographic time series correspond to data averaged over a box that extends zonally from 62°W to 64°W, meridionally from 43°N to 45°N and vertically from 145 to 155 m. The oxygen time series between 1961 and 1999 at a 150 m depth is based on reported oxygen anomaly time series<sup>6</sup> plus a mean value of 179.7  $\mu\text{M}$  computed from a subset of the original data set<sup>16</sup> as the complete data set is unavailable. For the period from November 2012 to April 2014, oxygen data in this region are interpolated at 150 m from high-resolution observations of two benthic pods<sup>16</sup>, one at a depth of 133 m (63.10°W, 44.09°N) and the other one at 160 m (63.19°W, 43.91°N).

Historical time series of the depth of two isopycnals at the TGB are computed using data extracted from HydroBase3, which is a global database of observed profiles that is quality controlled, compiled and made available by the Woods Hole Oceanographic Institution (WHOI). The data were extracted for the time period between 1920 and 2012, and the region that extends zonally from 53°W to 47.5°W and meridionally from 41.5°N to 44°N (Fig. 1). Only data flagged as good measurements are considered. The resulting subdata comprise vertical profiles from bottles (86%), CTD casts (9%) and Argo floats (5%). Historical hydrographic data were sampled using bottles until the 1980s, with an accuracy of  $\pm 0.01\text{--}0.02^\circ\text{C}$  for temperature and  $\pm 0.01\text{--}0.03$  for salinity as reported for measurements carried at WHOI<sup>33</sup>. CTDs mounted on rosettes were introduced in the late 1960s and have typical temperature and salinity accuracies of  $\pm 0.001^\circ\text{C}$  and  $\pm 0.003$ , respectively. Finally, the Argo float program started in the early 2000s and CTD mounted on these floats are less accurate ( $\pm 0.002^\circ\text{C}$  for temperature and  $\pm 0.01$  for salinity) than those used on ships, as they are not routinely calibrated ([http://www.argo.ucsd.edu/Data\\_FAQ.html#accurate](http://www.argo.ucsd.edu/Data_FAQ.html#accurate)). Observational analyses at the TGB are limited to springtime observations because the spring months (April, May and June) are the best sampled, with 61% of all the data, and because observations are sparse in other months, particularly before 1950. By limiting our analysis to a single well-sampled season, we avoid aliasing seasonal variability in our multidecadal time series. First, time series of isopycnal depths were obtained by cubic interpolation of a specific density using hydrographic vertical profiles. Second, we constructed a spatially varying springtime isopycnal depth by averaging over all the observations in  $0.5^\circ \times 0.5^\circ$  subdomains of the TGB region. Third, we calculated isopycnal depth anomalies by subtracting the appropriate climatological mean from every observation within these subdomains. These anomalies were then averaged in overlapping three-year windows to arrive at the black dots in Fig. 3a,b. This procedure for calculating anomalies helps minimize the possibility for mistakenly interpreting variability in the location in which the observations were collected in the larger box as a change in properties at the TGB. Finally, a linear least squares regression was performed to find the temporal trend over the time series of anomalies. The resulting observational time series are compared with the climate model output by computing isopycnal depth differences between warming and preindustrial control scenarios averaged over the TGB and over each model year.

For all the analyses, density is derived from the hydrographic data using the equation of state EOS-80 (ref. 34) because it is available in the software (NOAA/PMEL Ferret) that is amenable to the analysis of large model output. Although EOS-80 has been superseded by the International Thermodynamic Equation Of Seawater-2010 (TEOS-10), the two algorithms return near identical density values in our region of interest. We quantified these differences in terms of isopycnal depth anomaly time series. The root mean square difference between time series using TEOS-10 and EOS-80 is 1.9 m for  $\sigma_\theta = 27.25\ \text{kg m}^{-3}$  and 2.8 m for  $\sigma_1 = 32.3\ \text{kg m}^{-3}$ , that is, much smaller than the standard error (shaded areas in Fig. 3). Additionally, the differences in isopycnal deepening trends between

1920 and 2010 are about 0.01 m, which is also much smaller than 95% confidence intervals, which are  $\pm 0.2\ \text{m}$  for  $\sigma_\theta = 27.25\ \text{kg m}^{-3}$  and  $\pm 0.35\ \text{m}$  for  $\sigma_1 = 32.3\ \text{kg m}^{-3}$ .

**Climate model.** The Geophysical Fluid Dynamics Laboratory (GFDL) climate model CM2.6 is a high-resolution coupled atmosphere–ocean–ice global model that includes a reduced-complexity ocean biogeochemical model<sup>8</sup>. The ocean component (MOM5) has a spatial resolution of  $1/10^\circ$  and 50 vertical levels, and the biogeochemical model (miniBLING<sup>35</sup>) consists of three prognostic tracers—dissolved inorganic carbon, phosphate and oxygen. Human-induced biogeochemical inputs, such as nutrient loading, are not implemented.

The fully coupled model was spun up for 72 years with atmospheric  $\text{CO}_2$  fixed at a preindustrial concentration (286 ppm). After the spin-up phase, two different scenarios were integrated for an additional period of 80 years: a preindustrial control scenario in which atmospheric  $\text{CO}_2$  is held constant, and a warming scenario in which  $\text{CO}_2$  is increased at an annual rate of 1% until doubled. After doubling, which occurs at model year 70, atmospheric  $\text{CO}_2$  was held constant for ten additional years. We analysed the full 80-year period of both simulations. Numerical time series for any given property  $\chi$  are constructed as  $\chi(t) = \chi(t=0) + \Delta\chi(t)$ , where  $\chi(t=0)$  is the value at the preindustrial initial time (year 1860), and  $\Delta\chi$  is the difference between the warming case and the same model year of the preindustrial control case. In this way, the influence of any model drift is minimized.

Modelled and observational time dimensions are related through atmospheric  $\text{CO}_2$ . The climate model is forced by a rapid increase in  $\text{CO}_2$  that resembles the RCP6 scenario, following  $\text{CO}_2^{\text{MOD}}(t^*) = 286\ e^{0.01 t^*}$ , where  $t^* \in [0, 80]$  is the model time. Historical and projected future  $\text{CO}_2$  time series are approximated by a quadratic polynomial of the form  $\text{CO}_2^{\text{OBS}}(t) = 0.01005(t-1,860)^2 - 0.9605(t-1,860) + 309.3$  for  $t > 1,860$ , being  $\text{CO}_2^{\text{OBS}} = 286$  at  $t = 1,860$ . The modelled time dimension is therefore transformed by a factor  $r$  that fulfils  $\text{CO}_2^{\text{MOD}}(t^*) = \text{CO}_2^{\text{OBS}}(rt^*)$  (Supplementary Fig. 7). Our intention was to put the modelled time series on a time axis that roughly corresponds to the historical  $\text{CO}_2$  trajectory. We acknowledge that transforming the time axis to relate the idealized model, following a convention of 1% per year increase in atmospheric  $\text{CO}_2$ , to the historical period when atmospheric  $\text{CO}_2$  was increasing at a slower rate does not account for other forced changes due to atmospheric aerosols, non- $\text{CO}_2$  greenhouse gases and ozone.

Most of the model analyses were performed on isopycnal surfaces, rather than at fixed depths, to avoid conflating shifts in water-mass characteristics with the heaving of isopycnals. We focused on  $\sigma_\theta = 27.25\ \text{kg m}^{-3}$  because its simulated depth is close to the observed depth range within the Laurentian Channel (Supplementary Fig. 8) and it remains isolated from the surface throughout the region, which thus avoids any influence from local air–sea exchange. For the Scotian Shelf, the analyses were performed on the 150 m horizontal level, where most measurements are available.

**Quasi-streamfunction and wind stress curl.** The quasi-streamfunction  $\Psi$  is defined so that  $F_x \equiv -\partial\Psi/\partial y$  and  $F_y \equiv \partial\Psi/\partial x$ , where the zonal flow is  $F_x = \int_{z_1}^{z_0} u\,dz$  and the meridional is  $F_y = \int_{z_1}^{z_0} v\,dz$ ,  $u$  and  $v$  being the horizontal velocity components. These flows are depth integrated over the upper 1,000 m because our interest lies in the upper ocean circulation. Hence, the net vertical transport is non-zero or, in other words, the lateral flow is not fully divergence free, and therefore we called it quasi-streamfunction. Flows are computed online in the model, saved every five days and solved for  $\Psi$  by cross-differentiation of the  $F_x$  and  $F_y$  definitions. Finally, we averaged  $\Psi$  over the last 20 model years. This definition of  $\Psi$  has units of volume Sverdrup ( $1\ \text{Sv} \equiv 10^6\ \text{m}^3\ \text{s}^{-1}$ ).

The curl of the wind stress vector  $\tau = (\tau_x, \tau_y)$  is approximated using finite differences as  $\nabla_h \times \tau \approx \Delta\tau_y/\Delta x - \Delta\tau_x/\Delta y$ . To unveil the large-scale pattern over the North Atlantic we take  $\Delta x = \Delta y = 2^\circ$  because grid spacings smaller than this threshold obscure the basin-scale distribution.


**Data availability.** The hydrographic data at Cabot Strait, the Laurentian Channel Mouth and the central Scotian Shelf come from the CLIMATE database (<http://www.bio-iob.gc.ca/science/data-donnees/base/data-donnees/climate-climat-en.php>). Oxygen data at Cabot Strait are available from the BioChem database (<http://www.dfo-mpo.gc.ca/science/data-donnees/biochem/in dex-eng.html>) and that at the central Scotian Shelf is available upon request from C. E. Brennan (cebrennan.climate@gmail.com). Historical data at the TGB has been extracted from the public global database HydroBase3 website (<http://www.whoi.edu/science/PO/hydrobase/php/index.php>). The CM2.6-miniBLING model output is available upon request from J.P.D (john.dunne@noaa.gov). Bathymetric data comes from the 2-minute Gridded Global Relief Data (ETOPO2) v2, which is publicly available (<https://www.ngdc.noaa.gov/mgg/global/etopo2.html>).

## References

- Warren, B. A. Nansen-bottle stations at the Woods Hole Oceanographic Institution. *Deep Sea Res.* **1** 55, 379–395 (2008).
- Millero, F. J., Chen, C.-T., Bradshaw, A. & Schleicher, K. A new high pressure equation of state for seawater. *Deep Sea Res.* **A** **27**, 255–264 (1980).
- Galbraith, E. D. et al. Complex functionality with minimal computation: promise and pitfalls of reduced-tracer ocean biogeochemistry models. *J. Adv. Model. Earth Syst.* **7**, 2012–2028 (2015).



# QUERY FORM

Nature Climate Change	
<b>Manuscript ID</b>	[Art. Id: 263]
<b>Author</b>	Mariona Claret 

## AUTHOR:

The following queries have arisen during the editing of your manuscript. Please answer by making the requisite corrections directly in the e-proofing tool rather than marking them up on the PDF. This will ensure that your corrections are incorporated accurately and that your paper is published as quickly as possible.

Query No.	Nature of Query
Q1:	Author surnames have been highlighted - please check these carefully and indicate if the first name or surname have been marked up incorrectly. Please note that this will affect indexing of your article, such as in PubMed.
Q2:	Please note that the eproof should be amended in only one browser window at any one time, otherwise changes will be overwritten.
Q3:	For Fig. 2b, please add a vertical axis label to show the variable and unit, for example 'Salinity (‰)'. Arbitrary units can also be given '(a.u.)'.
Q4:	In this journal, the reference citation sequence is through the main text, followed by those in the figure captions and finally those in the methods. Please check the renumbered references (from 31 in the Fig. 1 caption) carefully.
Q5:	Please define 'OBS' and 'MOD' at their first use in the manuscript.
Q6:	We conform to the style that vectors are set in bold roman font. The magnitude of a vector is set in non-bold italics, as are scalar components, tensors and matrices. Please ensure your text is consistent with this throughout.
Q7:	It is better to give a formal body from which this data can be obtained given that something could happen to C. E. Brennan at any time.