

3-2016

Connections, March 2016

University Library
Roger Williams University

Follow this and additional works at: <https://docs.rwu.edu/libnews>

 Part of the [Education Commons](#), and the [Library and Information Science Commons](#)

Recommended Citation

University Library, "Connections, March 2016" (2016). *Connections*. 29.
<https://docs.rwu.edu/libnews/29>

This News Article is brought to you for free and open access by the University Libraries at DOCS@RWU. It has been accepted for inclusion in Connections by an authorized administrator of DOCS@RWU. For more information, please contact mwu@rwu.edu.

Home	Announcements	The Learning Commons	Outreach & Discovery	Programs & Exhibits	Tech News	Culture of the Book	
------	---------------	----------------------	----------------------	---------------------	-----------	---------------------	--



The banner features the text "Connections @ The RWU Learning Commons" in a large, light blue serif font. Below it, the tagline "Connect • Collaborate • Create" is written in a smaller, yellow sans-serif font. The background is a dark blue gradient with flowing, lighter blue wavy lines.

HOME » 2016 » MARCH

March 2016

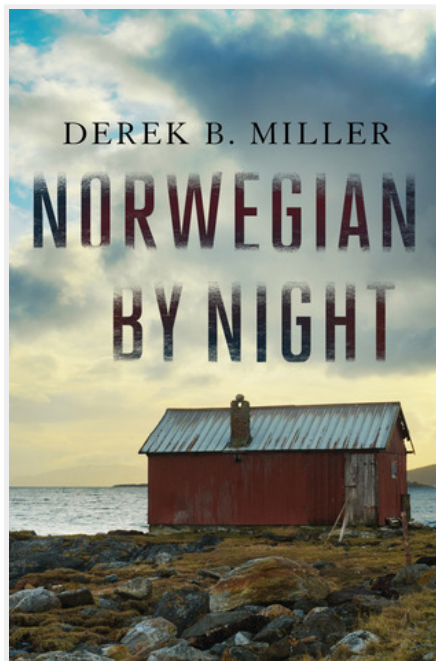
From The Nightstand: Maia Farish

MARCH 24, 2016 2:49 PM

Interview conducted by *Brittany Parziale, Connections Intern*



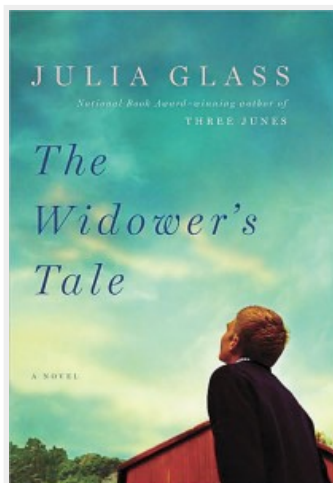
Maia Farish, wife of President Donald J. Farish, is First Lady of RWU.



Current Reads

Maia Farish is currently reading *Norwegian by Night* written by Derek B. Miller. This thrilling literary novel tells the story of Sheldon Horowitz, an 82-year-old Jewish widower living in Oslo with his granddaughter and her Norwegian husband, who becomes a party to a hate crime in which he finds his long sought out opportunity to protect and help others. The novel is a unique hybrid of part memory, part police procedural, part sociopolitical tract, and part existential meditation.

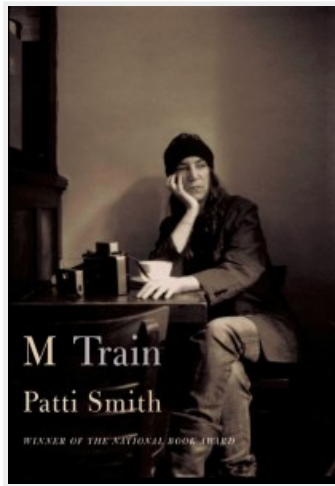
"It is a crazy book," She says. "It is funny but at the same time it is really dark." Maybe not one of her normal reads, the protagonist being a cranky old Jewish man from New York "took me back to growing up in New York surrounded by Jewish friends and their fathers and grandfathers."



Memorable Reads

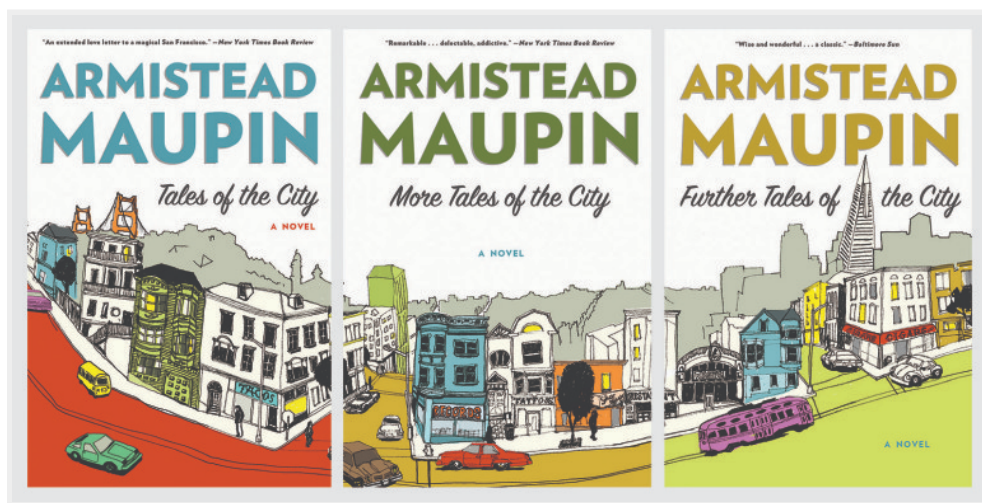
All of Reynolds Price's books, – including *A Long and Happy Life* and *Three Gospels*. Other memorable reads include *Three Junes* (2002) and *The Widower's Tale* (2010) both written by Julia Glass. *The Widower's Tale* is particularly interesting as it is written by a female author in the first person perspective of a man. "I have a strong admiration for authors who are able to successfully write in the opposite gender." Several books from childhood also remain memorable, such as *Charlotte's Web*, *Stuart Little*, *Cricket in Times Square*, and *Rebecca of Sunnybrook Farm* as a child.

"I find myself mostly reading personal, dense novels with various levels of complexity, gravitating towards favorite authors more so than subjects." Mrs. Farish looks for authors who can manage dialogue that captures the actual voices and lifestyles of their characters, adding very realistic elements to their works of fiction. She notes high praise for literary writers such as Marilynne Robinson and Ron Rash, but also has a soft spot for crime novels by authors including Donna Leon, Kate Atkinson, and Colin Dexter. Nathaniel Philbrick, who she admires, remains on the top of her list for his ability to teach his love of history through storytelling, bringing historical events to life in a unique way. "One of my favorite aspects of reading is being able to come away from books knowing there are so many human experiences one cannot begin to consider without reading."



Upcoming Reads

M Train by Patti Smith. Mrs. Farish has taken with Smith's 2009 memoir *Just Kids* for "the fluid and luminous writing that was so different from her music." Mrs. Farish appreciates how Smith's writing balances a very intimate manner with respect and authenticity.



Essential Reads

Armistead Maupin's book series *Tales of the City*. The series consists of nine novels all taking place in Northern California during the outbreak of the AIDS crisis. The first book was published in 1978. "These books are the perfect combination of heartbreaking and funny consisting of amazing dialogue." Mrs. Farish has made it through the first six, and is clearing out space on her nightstand for the final three.

[Tweet](#)

SAVE THE DATE: Claire Messud

MARCH 23, 2016 2:53 PM



Mary Jefft White

CULTURAL CENTER LECTURE SERIES



CLAIRE MESSUD

4TH ANNUAL BERMONT DISTINGUISHED VISITOR

Claire Messud is the author of several works of fiction, most recently *The Woman Upstairs*. Her four previous books, among them *The Emperor's Children*, were named New York Times Notable Books of the Year. Twice, she was named a finalist for the PEN/Faulkner Award.

MONDAY, APRIL 11TH, 2016
7:00 PM. AT ROGERS FREE LIBRARY
525 Hope St, Bristol, RI 02809

CO-SPONSERED WITH THE ROGERS FREE LIBRARY
(THE JANE BODELL ENDOWMENT)

Free and open to the public

Questions: (401) 254-3031

Roger Williams
University

 Tweet

Student Accessibility Services: Behind the Scenes of the New Name – Jeremy Warnick Center for Student Accessibility

MARCH 17, 2016 2:00 AM

By Lisa Bauer, Associate Director, Student Accessibility Services



What is Student Accessibility Services?

The University is mandated by Section 504 of the Rehabilitation Act of 1973 and the *Americans with Disabilities Act* of 1990 to provide equal access to facilities, educational and co-curricular programs, campus activities and employment opportunities to qualified individuals with disabilities. SAS ensures that students with disabilities have physical and academic access to the educational experience here at the University by providing reasonable and appropriate accommodations. SAS believes that the most successful students are self-advocates who identify their own needs, take personal initiative in problem-solving and decision-making, and effectively use all available resources to fully participate in the educational experience.



SAS is now on the first floor of the Library. Where had it been before?

Since Fall 2002, SAS was housed in shared space in what was then known as the Center for Academic Development on the second floor of the Library. SAS occupied space within the Tutoring Centers until its move to the 1st floor in August 2015. Our colleagues in the Tutoring Centers graciously shared their space and their time/support/concern with SAS students over the decade plus together.



How many students have used Student Accessibility Services and what is the main purpose of the service?

Hundreds and hundreds of students have benefited from the services of SAS since the original office opened on campus back in the early 1990s. The original name was *Disability Support Services* and in July 2011 the name was changed to **Student Accessibility Services** to best display its primary mission and philosophy. With the emphasis on the *Student* first, then *Accessibility* and ending with identifying *Service* to display SAS as a strategy-based service model. In a *service model* a student's initial connection and ongoing interaction with SAS is self-propelled. SAS supports approximately 10% of the total undergraduate population at the University. The most commonly requested accommodations are: extended time for test-taking, testing in the SAS Testing Center, note-taking assistance and requests for alternate/electronic texts. Accommodations are not intended to guarantee success; they are intended to provide equal access to the educational experience so that students can display their level of learning. In the past two years the mid November total number of students new to SAS has reached 200 students. In prior years the November totals have been in the 100-125 student range. These higher numbers can be attributed to the fact that students are more comfortable with their diagnoses, they understand/accept their need for accommodations/support and they feel generally comfortable with the services of SAS, now in particular in its accessible and confidential location on the 1st floor.



Who was Jeremy Warnick – when did he attend RWU and what was his major?

Jeremy Warnick grew up in Easton, MA and arrived at the University as a transfer student in January 2005 to the Gabelli School of Business with all the hopes a student seeking a fresh with a new opportunity. His parents, Craig and Pam, were also hopeful that RWU would be a good match. What a wonderful thing it was when Jeremy made quick connections to friends and soon felt like he was in a place to call home. He immediately met with staff in Student Accessibility Services to help him with his academic accommodations and to acclimate to the Bristol campus — and maintained that connection throughout his time here. Sadly, Jeremy passed away suddenly in November, 2005.

**Dr. and Mrs. Warnick have honored their son's memory in two very distinct ways:
The Jeremy Warnick Memorial Scholarship**

As a way to honor their son, the Warnick family provided significant funding for an annual scholarship named in memory of Jeremy. There have been 13 recipients since 2007. Criteria for the scholarship offered each spring semester are as follows:

- Are **actively** using Student Accessibility Services at the University for a specific learning, medical, psychiatric or physical disability
- Display a documented need for financial support. (This scholarship is **only** applied to a student's billing account and is **not** a cash award to be used for other purposes such as Study Abroad travel.)
- Are in good academic standing and hold promise for the future.
- Are enrolled in the Gabelli School of Business, whenever possible, however, SAS and the Warnick Family welcome applicants from outside of the Gabelli School to apply.

The annual scholarship, along with an annual visit by Dr. and Mrs. Warnick to campus each fall to visit the bench and be guests of the University for dinner, have all been bonding points to keep the family tethered to a place that Jeremy loved. In July, 2015 when the Warnicks moved from Jeremy's childhood home to be closer to their daughter and new grandchild, the family was seeking a location for Jeremy's drum set and offered it to RWU. SAS worked with the RWU Musician's Guild and Professor Marilyn Mair to arrange for the donation of Jeremy's drum set now being used by creative and spirited students like Jeremy.



Jeremy Warnick Center for Student Accessibility

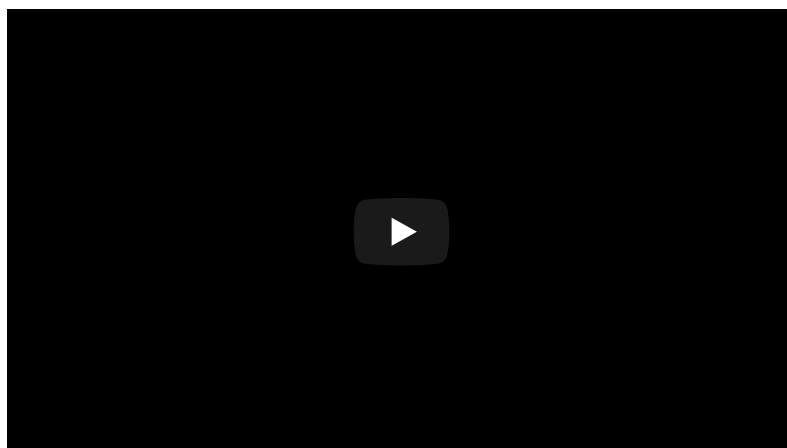
The Warnick's generosity continues a decade later and in a much broader way—their second generous gift to the University further illustrated their commitment to the students at RWU. By naming the SAS Center in honor of Jeremy, the Warnicks recognize that the students utilizing SAS services, as Jeremy did, are smart, capable and dedicated. But they also know that many students like Jeremy learn differently/creatively, have a challenge when learning new information, benefit from one/one support or by using technology to help bolster their comprehension of information. The Center is now accessible on the first floor, has a large Testing Center and private study/testing rooms, and can provide new technology for a wide range of academic access.

At the October 24, 2015 SAS Center naming dedication President Farish shared thoughtful reflections about students who learn differently and how supports have allowed these students opportunities for success on so many level through SAS. Additional remarks by VP John King and by the Reverend Nancy Soukup, as well as current 2015 recipient Sean Joyce, and alum Blair Victoria Dutra (2008 BA Psychology), Jeremy's close friend in 2005; all served to bring high honor to a very special dedication. A plaque noting the names of all past recipients of Jeremy's scholarship was unveiled at the dedication. A second bronzed plaque will soon tell Jeremy's story with an etching of his image.



Tech News – rCloud

MARCH 16, 2016 10:39 AM



Did You Know...???

MARCH 15, 2016 4:14 PM

Did you know that each semester you receive \$15 worth of printing money on your RWU UniCard? At the end of each semester your balance will refresh and you will start the next semester with a new balance of \$15. When printing throughout the semester your \$15 of printing will be used first, when your printing money runs out, you can use UniCard Points to print, and you can add cash to your card via the CBORD machine located on the main floor of the library.

Printers in the library default to double-sided printing, so be sure to check the print settings on the library computers before sending your work to the printers. Black and white printing is 7 cents a page, while color printing is 17 cents a page.



From the Archives: The Fulton/Howe Collection: March 1916

MARCH 7, 2016 4:03 PM

by Heidi Benedict, *University Archivist*

Have you ever wondered about the two portraits on the first floor of the library?

They are Dr. Herbert Marshall Howe and his daughter Edith. So why are they in the library?

In 1875 Dr. Howe purchased the property upon which RWU now sits and established Ferrycliffe Farm. There he raised Jersey dairy cows. At the time, Ferrycliffe extended across Metacom Avenue to the west shore of Bristol Point.

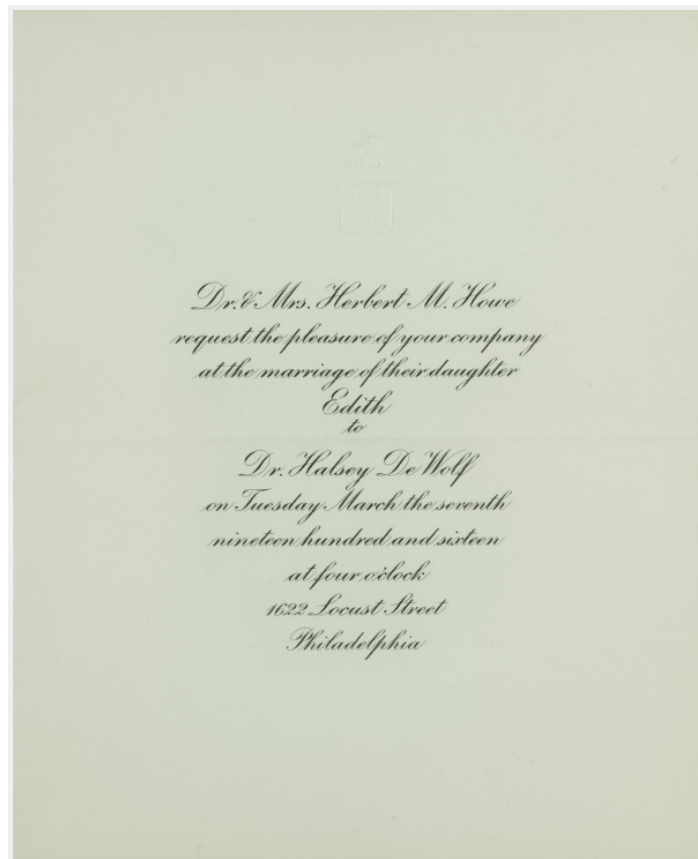
After Dr. Howe's death in 1916, the farm was taken over by his daughter Edith and her husband Dr. Halsey DeWolf. Dr. Howe's granddaughter Mary Howe DeWolf Fulton and her husband Dr. Marshall Nairne Fulton, continued farming on a smaller scale into the 1950s.

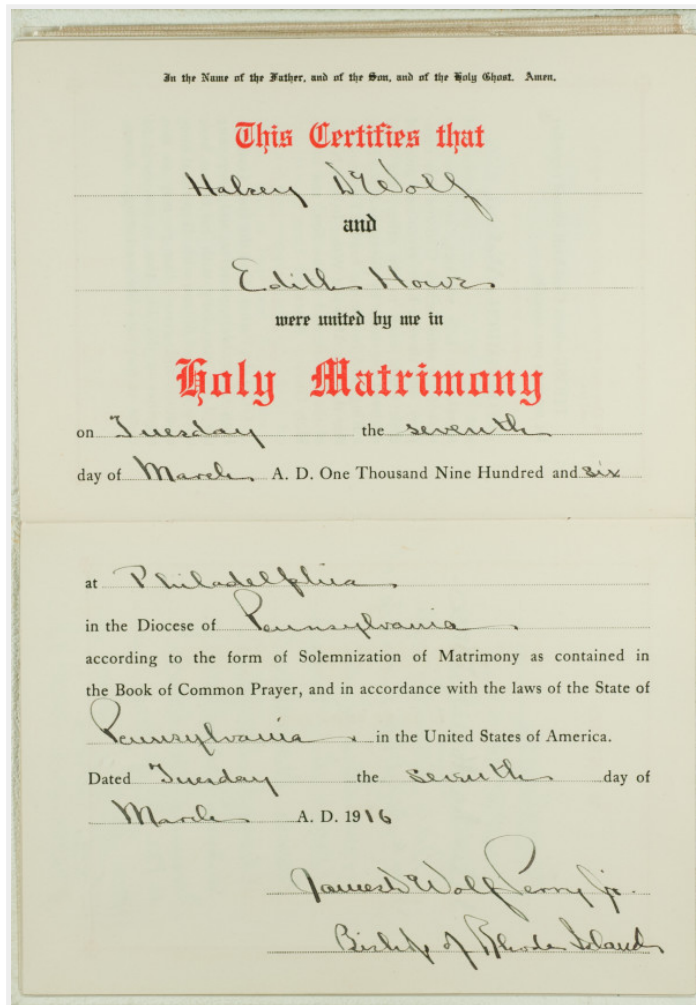
In the mid-1960s the University, then Roger Williams Junior College, acquired over 60 acres of land from the Fultons. The Bristol campus opened in the fall of 1969. The remaining 50 acres of the farm were sold to the University in the early 1990s.

Nearly five years ago, Mary Howe and Marshall's children, Harriet Fulton Dwyer and DeWolf Fulton, on behalf of all their siblings, donated a collection of family diaries, letters, and photographs to the University. Since then the Archives has been processing the collection. In doing so the University Archivist noted that 1916 was a significant year for the Howe and Fulton families. In celebration of these events she will be sharing specific items from the collection here in *Connections* throughout 2016. The Archives plans to open the collection to the public in the fall.

March 7, 1916:

Edith Howe and Halsey DeWolf were married in Philadelphia on March 7, 1916. The Archives holds a copy of their wedding invitation, and marriage service book, with a completed certificate, names of witnesses, and even a sprig of pressed flowers.





Edith and Hal's daughter, Mary Howe, married Marshall Fulton on June 22, 1940 in Bristol, RI.

Tweet

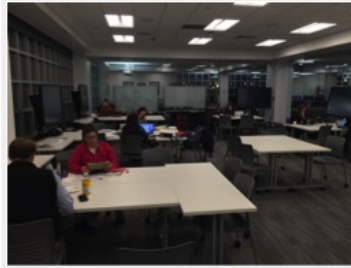
Faculty & Staff Writing Retreat

MARCH 1, 2016 3:09 PM

by Bob Shea, Associate Provost for the Advancement of Teaching and Learning



Roger Williams University's first Faculty & Staff Writing Retreat was incredibly successful. The retreat was co-sponsored by the Center for Teaching & Learning, the Writing Center, and the University Library. Participants took part in more than 20 hours of professional development aimed at furthering their scholarship. It was held on January 12 & 13, 2016.



Participants had the opportunity to work with Barbara Kenney, Karen Bilotti, and Fredrika Quinn who were tireless in their consulting efforts over the course of the two days. Participants were effusive in their praise of the retreat, staff, venue, and food.

They also noted that the retreat provided them with the time and support to advance important projects.

In 10+ years at RWU, I have never felt so supported with regard to the conduct of scholarly work. While grant and manuscript writing are an expectation in my discipline, and while the university provides access to space and resources in a variety of ways that facilitates those endeavors, actually inviting faculty/staff in a very deliberate way to "do their good honest work" was exceedingly rewarding and endlessly supportive. Simply put, the writing retreat involved none of the usual distractions that are required to secure space and time to do research. The, "Come. Write. Eat." mantra works for me.

Participants: Adria Updike, Nancy Hamlin Soukup, Barbara Grotta, Robert Dermody, Felicia Greene, Debra Mulligan, Keith Clavin, Anne Proctor, Renee Soto, Lindsey Gumb, Brian Wysor, Chris Menton, Erica Butcher, Stephan Brigidi, Anne Tait, William McKenzie, Lee Jackson, Kate Green, and Kelly Brooks

Sponsors: Center for Teaching & Learning, University Library, and The Writing Center

