



Linfield University
DigitalCommons@Linfield

Post-Grant Reports


Faculty Scholarship & Creative Works

2-15-2019

Student-Faculty Collaborative Research Grant Report

Megan Bestwick
Linfield College

Follow this and additional works at: <https://digitalcommons.linfield.edu/facgrants>

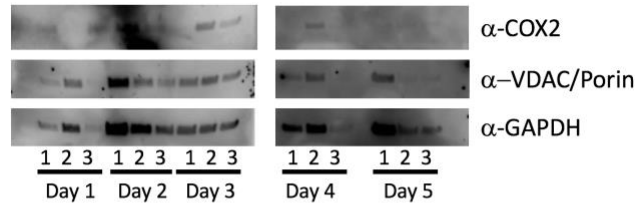
 Part of the [Analytical Chemistry Commons](#), [Biochemical Phenomena, Metabolism, and Nutrition Commons](#), [Biochemistry Commons](#), [Biology Commons](#), and the [Systems Biology Commons](#)

Recommended Citation

Bestwick, Megan, "Student-Faculty Collaborative Research Grant Report" (2019). *Post-Grant Reports*. Report. Submission 167.

<https://digitalcommons.linfield.edu/facgrants/167>

This Report is protected by copyright and/or related rights. It is brought to you for free via open access, courtesy of DigitalCommons@Linfield, with permission from the rights-holder(s). Your use of this Report must comply with the [Terms of Use](#) for material posted in DigitalCommons@Linfield, or with other stated terms (such as a Creative Commons license) indicated in the record and/or on the work itself. For more information, or if you have questions about permitted uses, please contact digitalcommons@linfield.edu.



Copper Concentrations

1=0.0mM CuSO_4 ; 2=0.25mM CuSO_4 ;
3=0.50mM CuSO_4

Figure 1. WT test cultures (1mL) were sampled once per day (5 days) yeast cells were collected. The procedure for extracts used in the gel runs were followed from Mitosciences. Samples of 20 μ L were separated on precast AnyKd 4%-20% of acrylamide gel (Bio-Rad). Proteins were transferred to PVDF and probed with the following primary antibodies: COX2 (Abcam), VDAC (Abcam), GAPDH (Santa Cruz).