

Washington University School of Medicine Digital Commons@Becker

Open Access Publications

2017

A phase 2 study incorporating sorafenib into the chemotherapy for older adults with FLT3-mutated acute myeloid leukemia: CALGB 11001

Geoffrey L. Uy

Washington University School of Medicine in St. Louis

Peter Westervelt

Washington University School of Medicine in St. Louis

Follow this and additional works at: https://digitalcommons.wustl.edu/open_access_pubs

Recommended Citation

Uy, Geoffrey L. and Westervelt, Peter, "A phase 2 study incorporating sorafenib into the chemotherapy for older adults with FLT3-mutated acute myeloid leukemia: CALGB 11001." *Blood Advances*.1,5. 331-340. (2017).
https://digitalcommons.wustl.edu/open_access_pubs/7227

This Open Access Publication is brought to you for free and open access by Digital Commons@Becker. It has been accepted for inclusion in Open Access Publications by an authorized administrator of Digital Commons@Becker. For more information, please contact engeszer@wustl.edu.

A phase 2 study incorporating sorafenib into the chemotherapy for older adults with *FLT3*-mutated acute myeloid leukemia: CALGB 11001

Geoffrey L. Uy,¹ Sumithra J. Mandrekar,² Kristina Laumann,² Guido Marcucci,³ Weiqiang Zhao,⁴ Mark J. Levis,⁵ Heidi D. Klepin,⁶ Maria R. Baer,⁷ Bayard L. Powell,⁶ Peter Westervelt,¹ Daniel J. DeAngelo,⁸ Wendy Stock,⁹ Ben Sanford,¹⁰ William G. Blum,⁴ Clara D. Bloomfield,⁴ Richard M. Stone,⁸ and Richard A. Larson⁹

¹Washington University School of Medicine, St. Louis, MO; ²Alliance Statistics and Data Center, Mayo Clinic, Rochester, MN; ³City of Hope, Duarte, CA; ⁴The Ohio State University, Columbus, OH; ⁵Sidney Kimmel Comprehensive Cancer Center, Johns Hopkins University, Baltimore, MD; ⁶Comprehensive Cancer Center, Wake Forest School of Medicine, Winston-Salem, NC; ⁷Greenebaum Comprehensive Cancer Center, University of Maryland, Baltimore, MD; ⁸Dana-Farber Cancer Institute, Boston, MA; ⁹University of Chicago, Chicago, IL; and ¹⁰Alliance Statistics and Data Center, Duke University, Durham, NC

Key Points

- The addition of sorafenib to chemotherapy for older adults with *FLT3*-ITD mutated AML is safe and may improve overall survival.

The Cancer and Leukemia Group B (CALGB), now part of the Alliance for Clinical Trials in Oncology, conducted a multicenter, single-arm, phase 2 study in patients ≥ 60 years with FMS-like tyrosine kinase 3 (*FLT3*)-mutated acute myeloid leukemia (AML). In this study, sorafenib was added to daunorubicin and cytarabine-based induction and consolidation chemotherapy and was also continued for 12 months of maintenance therapy. The primary end point of the study was overall survival (OS) at 1 year in the *FLT3* internal tandem duplication (*FLT3*-ITD) cohort. Fifty-four patients with a median age of 67 years (range, 60.3-82.7 years) were enrolled; 39 were *FLT3*-ITD patients (71%) and 15 were *FLT3*-TKD (29%) patients. The observed 1-year OS (95% confidence interval [CI]) was 62% (45%-78%) for the *FLT3*-ITD patients (meeting the primary end point 62% vs 30% for a historical control group, $P < .0001$) and 71% (42%-92%) for the *FLT3*-TKD patients. The median disease-free survival and OS were 12.2 months (95% CI, 5-16.9) and 15.0 months (95% CI, 10.4-20.1), respectively, in the *FLT3*-ITD group and 9.6 (95% CI, 1.9 to not available [NA]) and 16.2 months (95% CI, 5.0 to NA) for the *FLT3*-TKD group. This study suggests that the addition of sorafenib to chemotherapy for *FLT3*-ITD AML is feasible and may improve the survival of older adults with *FLT3*-mutated AML. This trial was registered at www.clinicaltrials.gov as #NCT01253070.

Introduction

The overall outcome of older adults (≥ 60 years) with acute myeloid leukemia (AML) has changed little over the past few decades. For patients deemed fit for intensive treatment, induction chemotherapy combining an anthracycline and cytarabine is associated with a lower rate of complete remission (CR; 50%-60%) and higher early mortality (up to 20% at 30 days) compared with younger patients.¹⁻³ Intensification of postremission therapy with high-dose cytarabine is poorly tolerated and has not improved outcomes, with a 3-year disease-free survival (DFS) of $\sim 10\%$ to 15%.⁴ The reasons for increased toxicity and decreased survival are incompletely understood and include both unfavorable tumor biology and patient-specific characteristics such as increased comorbidities.

FMS-like tyrosine kinase 3 (*FLT3*) is a type III receptor tyrosine kinase expressed on both normal CD34⁺ hematopoietic stem and progenitor cells and AML blasts. Mutations of *FLT3* are common in AML, occurring in 20% to 30% of adult patients across the entire age spectrum.² These mutations occur either as an internal tandem duplication (ITD) of the juxtamembrane domain or as a point mutation in the

activation loop of the tyrosine kinase domain (TKD), both of which result in ligand-independent activation and signaling that stimulate the proliferation of AML blasts.⁵⁻⁸ The presence of an *FLT3* mutation is associated with a poor prognosis in AML, with an increased rate of relapse and reduced OS.^{7,9-12} In earlier prospective studies by the Cancer and Leukemia Group B (CALGB; now a part of the Alliance for Clinical Trials in Oncology) analyzing outcomes for 219 previously untreated adults ≥ 60 years with AML treated with chemotherapy alone, the CR rate for the 72 patients with an *FLT3*-ITD was 67%, compared with 70% for the 147 with wild-type *FLT3* (*FLT3*-WT).¹³ However, overall outcomes were markedly different. After 1 year, overall survival (OS) was 31% vs 69%, event-free survival (EFS) was 17% vs 40%, and DFS was 25% vs 53% for patients with *FLT3*-ITD vs *FLT3*-WT. *FLT3* is therefore an attractive target in AML, and several *FLT3* inhibitors are currently in clinical development, including midostaurin, quizartinib, and gilteritinib.^{14,15}

Sorafenib (Nexavar) is an oral multikinase inhibitor approved for the treatment of metastatic renal cell and advanced hepatocellular carcinoma.^{16,17} Sorafenib was initially developed as an inhibitor of RAF1, a serine-threonine kinase in the mitogen activated protein kinase (*MAPK*) pathway critical in cellular responses such as cell proliferation, growth, motility, survival, and apoptosis. Sorafenib is a potent inhibitor of the *FLT3*-ITD, with a 50% inhibitory concentration in the single-digit nanomolar range.¹⁸ Although *FLT3*-TKD mutations are resistant to sorafenib,¹⁹ sorafenib blocks the autophosphorylation and activation of other tyrosine kinases, including vascular endothelial growth factor, platelet-derived growth factor receptor B, FGFR1, and KIT. Furthermore, inhibition of the *MAPK* pathway by sorafenib may also contribute to its clinical activity, as *MAPK* is a downstream target of *FLT3* signaling and can be activated by other factors, including mutations in *RAS*, which are found in $\sim 15\%$ of patients with AML.

Sorafenib has been tested as a single agent in phase 1 clinical trials for patients with relapsed or refractory AML. Evidence of clinical activity was observed, with CR or complete remission with incomplete hematopoietic recovery (CRi) achieved in 5 (10%) patients and a significant reduction in bone marrow and/or peripheral blood blasts in 17 (34%) additional patients, all of whom had *FLT3*-ITD mutations.²⁰ Sorafenib has also been tested as a single agent in the compassionate use setting, with case series reporting the development of rapid remissions in patients with *FLT3*-ITD–mutated relapsed or refractory disease.^{21,22} Responses were transient, however, with no durable remissions reported. Sorafenib has also been used in combination with idarubicin and cytarabine. In a phase 2 trial, 18 patients with newly diagnosed AML with *FLT3*-ITD were treated with this regimen, with 17 out of 18 patients (94%) achieving a morphological CR/complete remission with incomplete platelet recovery.²³ Phase 3 studies have combined sorafenib with chemotherapy for younger and older adults with AML, with mixed results.^{24,25} We hypothesized that the addition of sorafenib to induction and postremission therapy in patients >60 years with *FLT3*-mutated AML would improve the OS of these patients.

Subjects and methods

Description of participants

This CALGB trial (registered at www.clinicaltrials.gov as #NCT01253070) was conducted as a multicenter, single-arm phase 2 study. Eligible subjects were age ≥ 60 years, diagnosed

with AML with a *FLT3* mutation, and had no prior chemotherapy for their disease. Subjects with acute promyelocytic leukemia, AML with t(8;21)(q22;q22), *RUNX1-RUNX1T1*, or inv(16)(p13.1q22), *CBFB-MYH11* were excluded from the study. Patients with a history of a myelodysplastic syndrome or myeloproliferative neoplasm were eligible provided that they had not received chemotherapy including lenalidomide, azacitidine, or decitabine for their antecedent hematologic disorder. Institutional review board approval was obtained for the study by all participating institutions.

Treatment plan

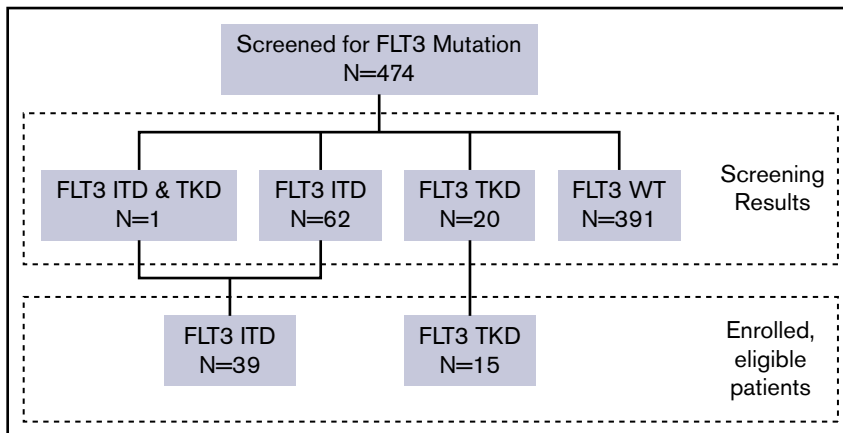
Remission induction therapy consisted of 7+3 (cytarabine 100 mg/m² per day by continuous intravenous infusion on days 1-7 and daunorubicin 60 mg/m² per day IV on days 1-3) with sorafenib 400 mg orally every 12 hours on days 1 to 7. A second induction course consisting of 5+2 with sorafenib (cytarabine 100 mg/m² per day on days 1-5, daunorubicin 60 mg/m² per day on days 1-2, and sorafenib 400 mg twice daily on days 1-7) was administered to patients not achieving a hypoplastic marrow on a day +14 bone marrow evaluation. Due to a daunorubicin shortage in the United States during the study, substitution of idarubicin 12 mg/m² day was permitted during induction. Sorafenib for this trial was supplied by the National Cancer Institute and Bayer Pharmaceuticals, Inc.

For patients achieving a CR or CRi, postremission therapy consisted of 2 cycles of intermediate-dose cytarabine 2 g/m² per day over 3 hours on days 1 to 5, together with sorafenib 400 mg twice daily for 28 days. Maintenance treatment with sorafenib 400 mg twice daily was then administered for up to twelve 28-day cycles. No dose modifications were made for hematologic toxicities during remission induction or consolidation therapy. During maintenance, sorafenib was interrupted and could be dose-reduced for grade 3/4 neutropenia (absolute neutrophil count $<1000/\mu\text{L}$), thrombocytopenia (platelets $<50\,000/\mu\text{L}$), or clinically significant grade 3/4 nonhematologic toxicities. Patients who achieved a CR/CRi were permitted to undergo an allogeneic hematopoietic cell transplant (allo-HCT) if deemed appropriate by the treating physician. Response to treatment was assessed according to the Revised International Working Group criteria for AML.²⁶

FLT3 analysis

Detection of either the *FLT3*-ITD or TKD (D835) mutation was performed using standard polymerase chain reaction (PCR) techniques by a Clinical Laboratory Improvement Amendments–approved central laboratory. Genomic DNA was isolated from cells submitted to the Alliance Leukemia Tissue Bank at the Ohio State University using a QIAamp DNA Blood Mini Kit. Exons 14/15 and exon 20 of *FLT3* were simultaneously amplified in triplicate with primers described previously.²⁷ For the ITD analysis, PCR was initiated at 95°C for 15 minutes, followed by 35 cycles at 95°C for 30 seconds, 58°C for 55 seconds, 72°C for 90 seconds, and 72°C for 10 minutes. For the TKD D835 mutation, PCR was initiated at 95°C for 15 minutes, followed by 40 cycles at 95°C for 30 seconds, 58°C for 60 seconds, 72°C for 105 seconds, and 72°C for 10 minutes. The TKD amplicons (5 μL) were subjected to digestion with 1 U *EcoRV* (Invitrogen, Carlsbad, CA) in a 20- μL reaction at 37°C for 1 hour, followed by heat activation at 65°C for 10 minutes. The resultant ITD and *EcoRV*-digested TKD amplicons were subjected to capillary electrophoresis in a 3130XL Genetic analyzer and analyzed by GeneMapper V4.0 (Applied Biosystems, Foster

Figure 1. FLT3 mutation screening. WT denotes wild-type alleles.



City, CA). The lower limit of detection was 2.6% (2.169% ± 0.94%) and 4.4% (4.384% ± 0.40%) for ITD and TKD, respectively. The cutoff for ITD and TKD for this clinical trial was 5.0%. The allelic ratio was defined as *FLT3*-mutant/*FLT3*-WT.

Plasma inhibitory assays (PIAs) were performed as previously described.²⁸ Briefly, Molm-14 cells, which harbor an *FLT3*-ITD mutation, were incubated with patient plasma and subjected to antiphosphotyrosine immunoblotting. Densitometry was performed, and the PIA was calculated by expressing the density as percent decrease from the baseline pretreatment sample.

Statistical considerations

The trial was designed as a 1-stage single-arm phase 2 study. The primary end point of the study was the 1-year OS rate in the *FLT3*-ITD AML subgroup. Historically, patients in this subgroup who were not treated with sorafenib had CR rates of 67% and 1-year OS rates of 31%.¹³ The study was designed to detect an improvement in the 1-year OS rate from 30% to 50% using a 1-sided type I error rate of 10%. A sample size of 39 evaluable patients with newly diagnosed *FLT3*-ITD AML was required based on these assumptions. This sample size also provided 90% power to detect an improvement in the complete remission rates from 67% to 82%.

OS was defined as the time from registration to death from any cause. EFS was defined as the time from registration to failure to achieve CR during induction, relapse after achieving a CR, or death from any cause. DFS was defined for patients who achieved a complete response during induction as the time from CR or CRi to relapse after achieving a CR or CRi or death from any cause. Patients who were event-free for each time-to-event end point were censored at their time of last follow-up. All time-to-event end points were analyzed using the method of Kaplan-Meier. Univariable Cox proportional hazards models for time-to-event end points (OS, DFS, and EFS) were performed to understand the impact of sex, age, race/ethnicity, *FLT3* status, and European LeukemiaNet classification on outcomes. All *P* values reported are 2 sided, except for the primary efficacy analyses, which are 1 sided following the design of the study.

Results

FLT3 mutation screening

Data were frozen for this analysis as of May 2016. All patients were off active treatment at the time of this analysis. A total of 474 older

adults were screened for *FLT3* mutations through the central laboratory. The median turn-around time for *FLT3* testing from receipt of sample was 46 hours, and 99.1% of cases were returned within 48 hours. *FLT3* mutations were identified in 83 subjects

Table 1. Baseline characteristics

	<i>FLT3</i> ITD (n = 39)	<i>FLT3</i> TKD (n = 15)	Total (N = 54)
Age, y			
Median (range)	67.6 (60.3-82.7)	65.4 (60.8-82.1)	67.4 (60.3-82.7)
≥70	17 (44)	3 (20)	20 (37)
Sex			
Male	20 (51)	10 (67)	30 (56)
Female	19 (49)	5 (33)	24 (44)
Onset of AML			
De novo	32 (82)	14 (93)	46 (85)
Therapy-related myeloid	2 (5)	1 (7)	3 (6)
MDS related	5 (13)	0 (0)	5 (9)
ELN classification			
Intermediate I/CN-AML	21 (54)	6 (40)	27 (50)
Intermediate II	12 (31)	5 (33)	17 (32)
ELN adverse	1 (3)	2 (13)	3 (6)
Cytogenetics insufficient for evaluation	5 (13)	2 (13)	7 (13)
Allelic ratio			
Median (range)	0.7 (0.1-7.3)	0.3 (0.1-2.1)	
WBC count			
Median (range)	22 (0.8-344)	16 (0.7-60)	18 (0.7-344)
Bone marrow blast, %			
Median (range)*	68 (0-96)	58 (31-96)	60 (0-96)
ECOG performance status			
0	18 (46)	5 (33)	23 (43)
1	17 (44)	10 (67)	27 (50)
2	4 (10)	0	4 (7)

Data are presented as n (%) of patients unless otherwise indicated. CN, cytogenetically normal; ECOG, Eastern Cooperative Oncology Group; ELN, European LeukemiaNet; MDS, myelodysplastic syndrome; WBC, white blood cell.
*One patient was enrolled with multiple myeloid sarcomas but no increase in bone marrow blasts.

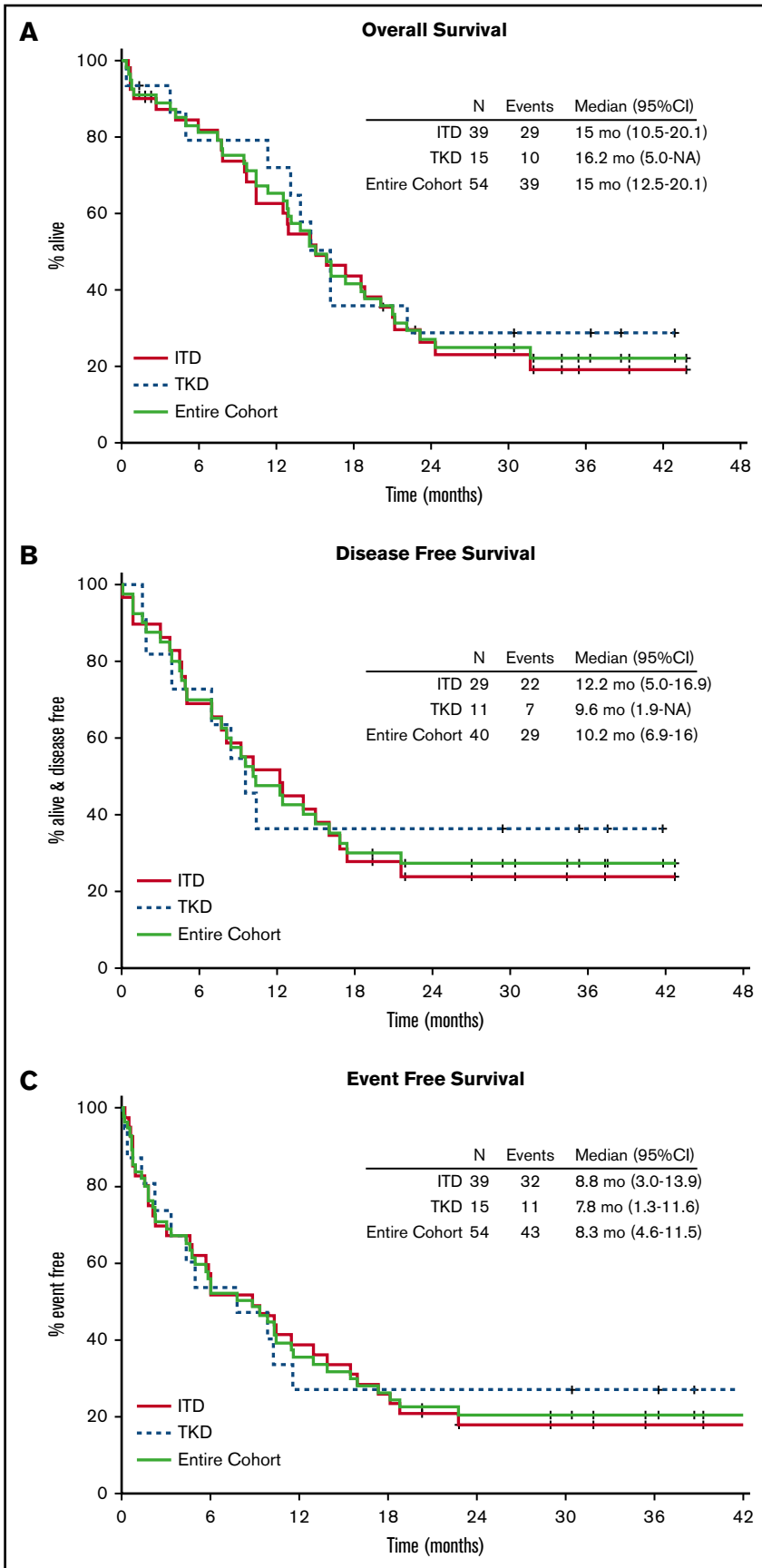


Figure 2. Overall outcomes of *FLT3*-mutated AML treated with sorafenib. Kaplan-Meier curves for OS (A), DFS (B), and EFS (C).

(17.5%), including 62 (13.1%) with *FLT3*-ITD, 20 (4.2%) with *FLT3*-TKD, and 1 (0.2%) with both ITD and TKD (Figure 1). Between April 2011 and August 2013, 54 patients (39 with *FLT3*-ITD and 15 with *FLT3*-TKD) enrolled in the study. This study used a common CALGB screening protocol that enabled patients who were subsequently considered unsuitable for intensive therapy by their treating physician to enroll in an alternative CALGB clinical trial.

Patient characteristics

Baseline characteristics are summarized in Table 1. The median age of the study cohort was 67 years, and 37% of patients (n = 20) were ≥70 years. The majority of patients (85%; n = 46) had de novo disease and either normal or intermediate-risk cytogenetics according to European LeukemiaNet classification.²⁹ The median *FLT3* allelic ratio was 0.7 (range, 0.1-7.3) for patients with *FLT3*-ITD and 0.3 (range, 0.1-2.1) for patients with *FLT3*-TKD.

Remission induction

Following 1 or 2 courses of induction chemotherapy, 74% of patients (40 of 54) achieved a CR. No patient had a CRi. A total of 31 patients (57%) achieved CR after the first induction course, and 9 (17%) required a second cycle of induction chemotherapy. The rate of CR was similar between patients with *FLT3*-ITD (74%; 95% confidence interval [CI], 58%-87%) and *FLT3*-TKD (73%; 45%-92%). The CR rate by age categorization was 86% for patients 60 to 69 years (19 of 22) and 59% for those ≥70 years (10 of 17) in the *FLT3*-ITD subgroup; the CR rate was 67% for patients 60 to 69 years (8 of 12) vs 100% for those ≥70 years (3 of 3) in the *FLT3*-TKD subgroup. Five deaths (9%) occurred during the initial 30 days of treatment. All early deaths occurred in subjects aged ≥69 years (range, 69-81 years).

Consolidation and maintenance

Of the 40 patients who achieved a CR, 33 received consolidation with intermediate-dose cytarabine plus sorafenib. Subsequently, 21 patients (16 with *FLT3*-ITD and 5 with *FLT3*-TKD) started maintenance therapy, receiving a median of six 28-day cycles of therapy (range, 1-12 cycles). During sorafenib maintenance, the most commonly reported treatment-related adverse events were grade 1 diarrhea, fatigue, and transaminitis and grade 2 palmar-plantar erythrodysesthesia. Three patients discontinued sorafenib secondary to adverse events (including 2 cases involving a rash).

Survival

With a median follow-up of 34.8 months for surviving patients, the Kaplan-Meier estimate for median OS was 15 (range, 10.4-20.1) months for patients with *FLT3*-ITD and 16.2 (range, 5.0 to not available [NA]) months for *FLT3*-TKD (Figure 2A). The observed 1-year OS rate was 62% (95% CI, 45%-78%) in the *FLT3*-ITD group and 71% (95% CI, 42%-92%) in the *FLT3*-TKD group. This study thus met the protocol-defined criteria for improvement in the 1-year OS rate (62% vs 30% [our historical experience]; 1-sided $P < .0001$). The median and 1-year DFS were 12.2 months (95% CI, 5.0-16.9) and 52% (95% CI, 36%-74%) for *FLT3*-ITD patients and 9.6 months (95% CI, 1.9 to NA) and 36% (95% CI, 17%-80%) for *FLT3*-TKD patients (Figure 2B). For ITD and TKD patients, the median EFS was 8.8 months (95% CI, 3.0-13.9) and 7.8 months (95% CI, 1.3-11.6), respectively, with a 1-year EFS of 39% (95% CI, 26-57) and 27% (95% CI, 12-62), respectively (Figure 2C). For all subjects, the 2-year OS and EFS rates were 27% (95% CI, 17%-43%) and

Table 2. Univariable Cox proportional hazards models for OS, EFS, and DFS for the *FLT3*-ITD subgroup

	n (events)	HR	95% CI	2-sided P value
OS				
Race/ethnicity (non-Hispanic white vs other)	39 (29)	0.538	0.226-1.280	.16
Sex (female vs male)	39 (29)	1.289	0.620-2.682	.50
Age (≥70 y vs <70 y)	39 (29)	2.600	1.237-5.469	.01
ELN risk group (CN-AML vs intermediate II)	34 (24)	1.230	0.504-3.002	.65
ELN risk group (ELN adverse vs intermediate II)	34 (24)	1.764	0.211-14.782	.60
Allelic ratio (≥0.7 vs <0.7) (cutoff at median)	39 (29)	1.793	0.845-3.807	.13
EFS				
Race/ethnicity (non-Hispanic white vs other)	39 (32)	0.766	0.327-1.787	.54
Sex (female vs male)	39 (32)	1.338	0.665-2.691	.41
Age (≥70 y vs <70 y)	39 (32)	2.738	1.340-5.596	.01
ELN risk group (CN-AML vs intermediate II)	34 (27)	1.302	0.565-3.00	.54
ELN risk group (ELN adverse vs intermediate II)	34 (27)	3.789	0.441-32.554	.22
Allelic ratio (≥0.7 vs <0.7) (cutoff at median)	39 (32)	1.665	0.823-3.366	.16
DFS				
Race/ethnicity (non-Hispanic white vs other)	29 (22)	0.426	0.167-1.082	.07
Sex (female vs male)	29 (22)	1.466	0.631-3.405	.37
Age (≥70 y vs <70 y)	29 (22)	2.479	1.046-5.876	.04
ELN risk group (CN-AML vs intermediate II)*	25 (18)	2.105	0.691-6.410	.19
Allelic ratio (≥0.7 vs <0.7) (cutoff at median)	29 (22)	1.247	0.537-2.897	.61

CN, cytogenetically normal; ELN, European LeukemiaNet.

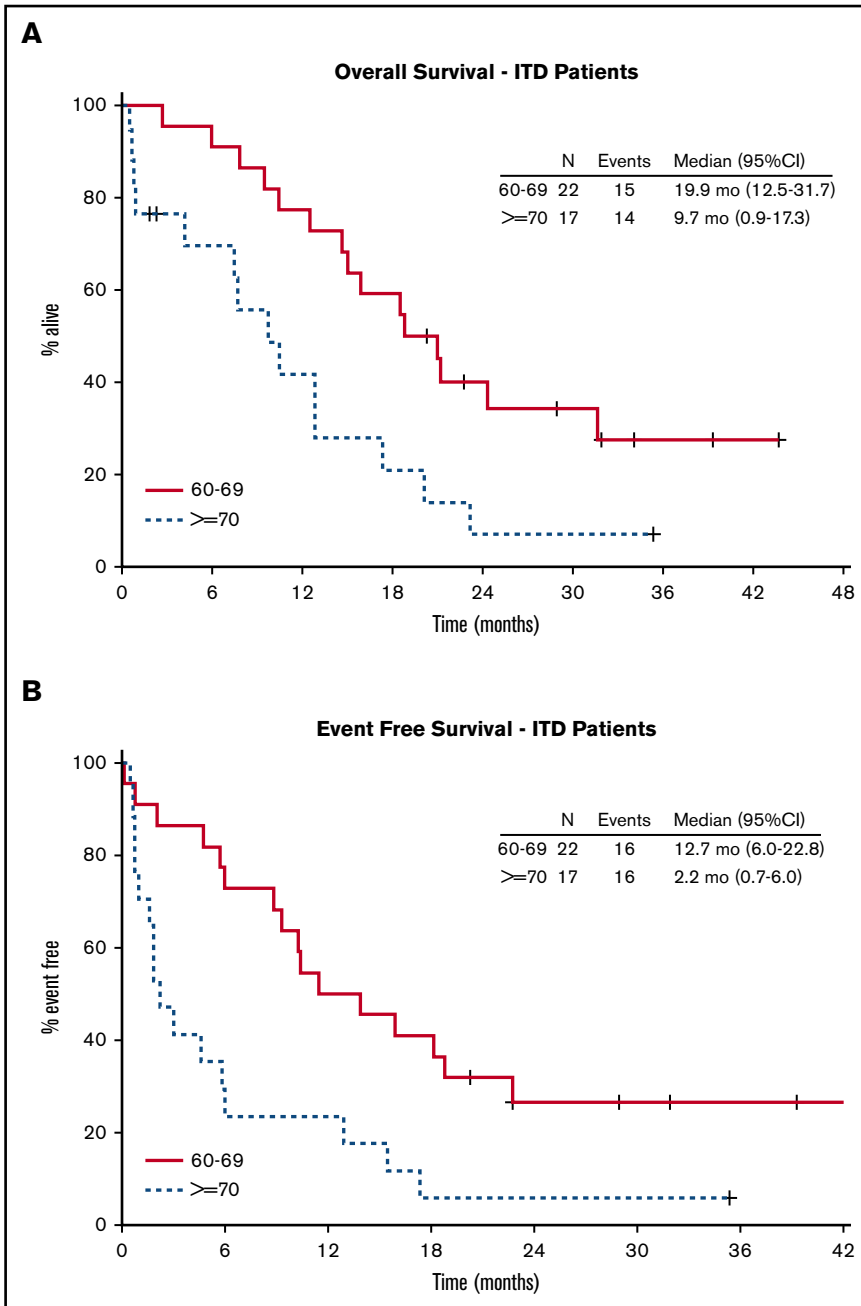
*No patients were ELN adverse.

20% (95% CI, 12%-34%), respectively. In univariable Cox regression analysis of the *FLT3*-ITD population, only age ≥70 years was associated with statistically significant differences in OS (hazard ratio [HR], 2.6; 95% CI, 1.2-5.5; $P = .01$), DFS (HR, 2.5; 95% CI, 1.05-5.9; $P = .04$), and EFS (HR, 2.7; 95% CI, 1.3-5.5; $P = .01$) (Table 2; Figure 3).

Effect of allo-HCT

In this study, 22 patients (14 with *FLT3*-ITD [36%] and 8 with *FLT3*-TKD [53%]) underwent allo-HCT; 18 of the transplants occurred during CR1 (13 ITD and 5 TKD), 2 were performed in CR2 (2 TKD), and 2 (1 ITD and 1 TKD) were performed during first relapse. The median time to transplant for all patients was 164 days (range, 82-802). In an attempt to separate the effect of allo-HCT on patient outcomes, we conducted a secondary sensitivity analysis in which we censored subjects at the time of transplant (Figure 4A-B). After censoring at the time of transplant, the 1-year rates of OS, DFS, and EFS for the *FLT3*-ITD population were 52% (95% CI, 35%-76%), 40% (95% CI, 22%-71%), and 29% (95% CI, 16%-54%), respectively, and 70% (95% CI, 45%-100%), 16% (95% CI, 3%-96%), and 11% (95% CI, 2%-70%), respectively, for the *FLT3*-TKD population.

Figure 3. Kaplan-Meier curves for OS and EFS for *FLT3*-ITD patients by age. (A) Patients aged 60 to 69 years. (B) Patients aged ≥ 70 years.



FLT3 PIAs

To measure the degree of FLT3 inhibition occurring in vivo during treatment with sorafenib, we measured the PIA for FLT3 in patient plasma samples. The PIA is a surrogate for measuring target inhibition by FLT3 inhibitors.²⁸ In this study, the median result of this assay (the percentage of baseline FLT3 autophosphorylation) in all patients was 6% of pretreatment baseline activity (range, 0-32) (n = 25) on day 6 of induction, 2% (range, 0-24) (n = 15) on day 15 of consolidation, and 0% (range, 0-4) (n = 6) on day 15 of maintenance, demonstrating robust inhibition of *FLT3* in vivo (Figure 5).

Discussion

In this paper, we describe the outcome of older adults with *FLT3*-mutated AML treated with the combination of sorafenib and chemotherapy.

Our data suggest an improvement for both OS and DFS and compare favorably to the outcomes we observed for older *FLT3*-ITD-mutated AML patients in previous CALGB clinical trials. The potential benefit was primarily observed in individuals aged 60 to 69 years who had an EFS and OS of 12.7 and 19.9 months, respectively, compared with 2.2 and 9.7 months for those ≥ 70 years. Moreover, toxicities were not increased above those expected from a 7+3 regimen in older adults.

When comparing this study to historical CALGB data, there are several important limitations in the interpretation of these results. As the role of allo-HCT in this population evolves, the rates of transplantation for both older adults and those with *FLT3*-mutated AML have increased. Increased rates of transplantation combined with overall improvements in reducing treatment-related mortality through better supportive care

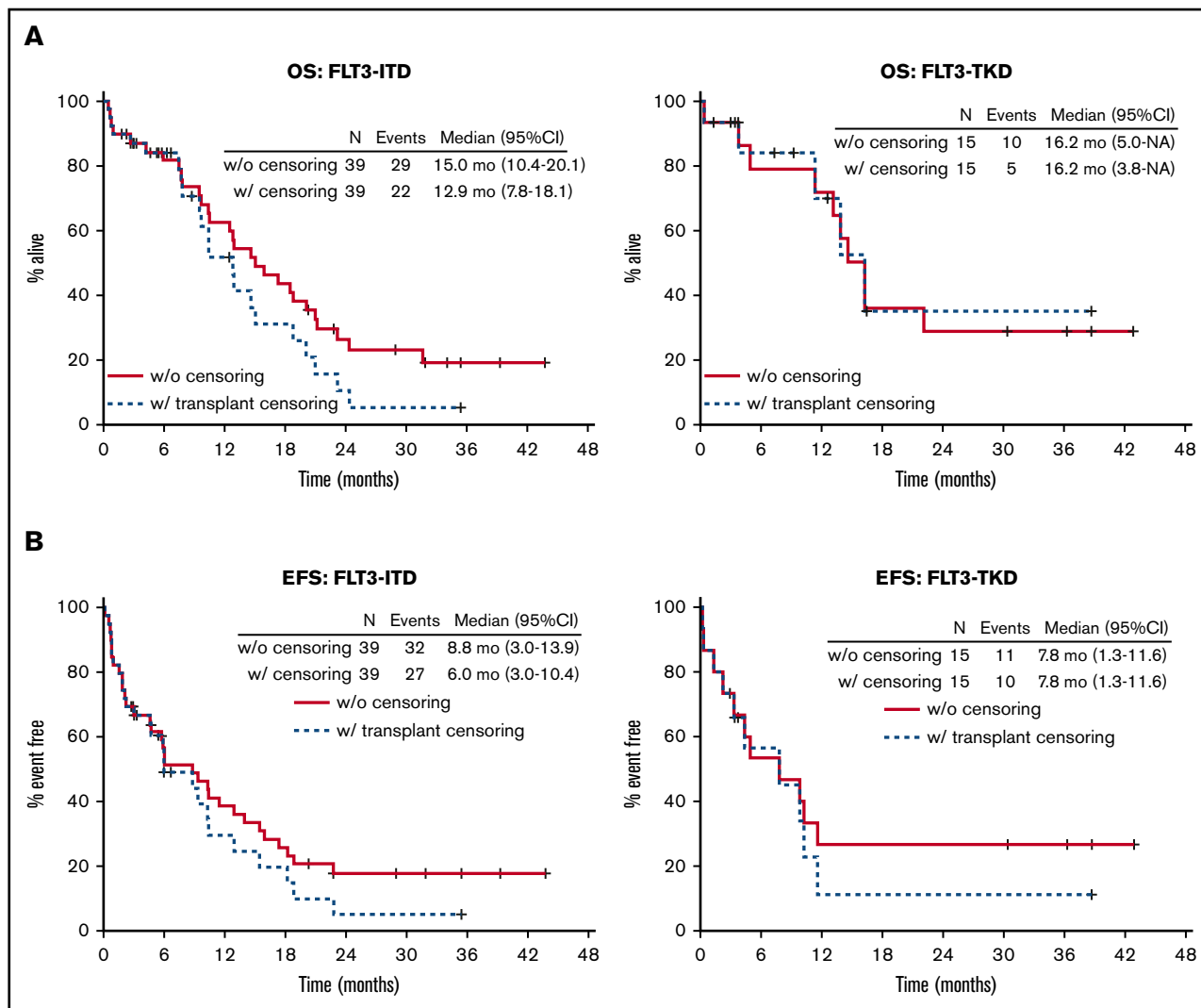


Figure 4. Sensitivity analysis for effect of allo-HCT. Kaplan-Meier curves for OS (A) and EFS (B) with and without censoring for allo-HCT by *FLT3*-mutated subgroups.

may partly account for the improvement in OS. However, when we censored the analysis for transplantation and examined the EFS of the population, these current results still compare favorably to the median EFS of 0.4 years and 1-year EFS of 17% (95% CI, 9-26) observed in earlier CALGB studies.¹¹ This suggests that differences in outcome remain and that the improved outcomes may be in part due to a reduction in relapse from the addition of sorafenib.

Previous studies of *FLT3* inhibitors in AML have had mixed results. Agents such as midostaurin possess modest activity against *FLT3* and are relatively nonspecific. As single agents, these drugs have demonstrated only transient decreases in blast counts, which is consistent with the finding that mutations in *FLT3* occur relatively late in leukemogenesis and frequently present in a subclone. In a randomized phase 3 study of lestaurtinib conducted in relapsed and refractory AML patients, measurement of *FLT3* inhibition by PIA was highly correlated with remission rate, but target inhibition on day 15 to <15% of baseline activity was achieved in only 58% of patients receiving lestaurtinib.³⁰ In the current study, we observed a median inhibition of >90%, which was sustained throughout induction and consolidation. These earlier studies paved the way for more potent

inhibitors such as sorafenib and also support the rationale for combining these agents with chemotherapy.

Recently, the Study Alliance Leukemia (SAL) in Germany reported the results of 2 randomized, placebo-controlled, phase 2 studies of sorafenib plus chemotherapy in newly diagnosed AML patients regardless of *FLT3* mutation status. In the SORAML study conducted in younger adults (<60 years old), the median EFS improved from 9 months to 21 months in the sorafenib group, corresponding to a 3-year EFS of 22% in the placebo group vs 40% in the sorafenib group ($P = .013$).²⁴ This study aimed to transplant every eligible patient, and there was no significant difference in OS. In addition, the benefit was not restricted to the *FLT3*-ITD cohort. In contrast, in a second trial designed for older adults (age >60 years), the addition of sorafenib did not result in improvement in either EFS or OS.²⁵ Notably, in older adults, the combination of sorafenib and chemotherapy was associated with an increased risk of early death (17% vs 7%). In both studies, no differences were observed in outcome based on *FLT3* mutation status. However, the power to detect a difference in the older adult study may be limited due to the relatively low numbers of *FLT3*-ITD patients in that study ($n = 28$).

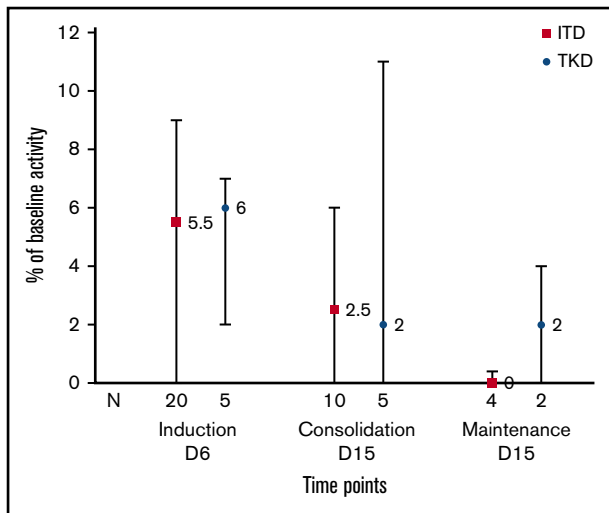


Figure 5. FLT3 PIA. PIA was measured on day +6 of induction, cycle 1 day +15 of consolidation therapy, and cycle 1 day +15 of maintenance sorafenib. Results are expressed as percent change in FLT3 autophosphorylation from baseline. Bars plot median and interquartile range for subjects with FLT3-ITD or FLT3-TKD.

Several factors may account for the differences between our current study and the SAL studies. First, the induction mortality of 9.3% observed in the current study was less than the 17% observed in the older adult SAL sorafenib study. In the older adult SAL study, sorafenib was administered from day 10 of induction until 3 days before the first day of the subsequent chemotherapy course, compared with only on days 1 to 7 of induction in our study. It is possible that prolonged exposure to sorafenib during induction chemotherapy may account for the increased early mortality. Second, the beneficial effect in the SORAML study was observed irrespective of the *FLT3* genotype. Recently, CALGB study 10603 (RATIFY) demonstrated that the addition of midostaurin to standard chemotherapy for younger adults (<60 years) with *FLT3*-mutated AML results in a significant survival advantage over a placebo control in a phase 3 trial.³¹ Whether the activity of sorafenib and other *FLT3* inhibitors in AML is specifically due to effects on *FLT3* or on other kinase targets remains an open question.

Our understanding of the role of *FLT3* mutations in AML continues to evolve. As more comprehensive genomic studies are performed on patients with AML, it has become clear that AML is a dynamic disease with mutations variably distributed between founding clones and subclones.³² Mutations in *FLT3* frequently occur in a subclone and also co-occur with other mutations such as *NPM1* and *DNMT3A*. This can result in complex interactions that influence clinical outcomes.^{33,34} Integrating genomic information both at diagnosis and throughout therapy will be critical to understand the impact of treatments such as *FLT3* inhibitors.

In conclusion, our study demonstrates the feasibility of conducting genotype-directed trials in the initial treatment of AML in the US cooperative groups. We were able to deliver a rapid turnaround time, with results returned to the treating physician within 48 hours, allowing this study to be conducted without significantly delaying therapy.

Older adults have been an attractive patient group for the development of novel therapies in AML due the historically poor outcomes and the large need unmet by currently available therapies. With any new agent, the potential for increased toxicity by adding the agent to a standard

regimen may negate any clinical benefits. This appears to be particularly true for older adults, for whom the safety margin for a 7+3 regimen is low. Nevertheless, this study clearly adds to the growing literature supporting the addition of tyrosine kinase inhibitors to chemotherapy in AML and justifies further testing in a randomized phase 3 study.

Acknowledgments

Michael J. Kelly and Samantha Sublett served as protocol coordinators. Scott Smith served as the Executive Officer for the Alliance Leukemia Committee.

This study was supported by the National Cancer Institute of the National Institutes of Health under award numbers U10CA180821 and U10CA180882 (to the Alliance for Clinical Trials in Oncology); U10CA180833, U10CA180836, U10CA180850, U10CA180867, and K23CA140707 (G.L.U.); and P50CA100632 (M.J.L.). Additional support funded in part by the National Cancer Institute grants U10CA031983, U10CA032291, U10CA033601, U10CA003927, U10CA041287, and U10CA077440.

The content is solely the responsibility of the authors and does not necessarily represent the official views of the National Institutes of Health.

The following institutions participated in this study: Dana-Farber/Partners CancerCare Lead Academic Participating Site (LAPS) (Boston, MA), Harold Burstein (U10CA032291 and U10CA180867); Dartmouth College, Norris Cotton Cancer Center LAPS (Lebanon, NH), Konstantin Dragnev (U10CA004326 and U10CA180854); Delaware/Christiana Care NCI Community Oncology Research Program (Newark, DE), Gregory Masters (U10CA045418 and UG1CA189819); Eastern Maine Medical Center Cancer Care (Brewer, ME), Thomas Openshaw; Northwell Health NCORP (Manhasset, NY), Daniel Budman (U10CA035279 and UG1CA189850); The Ohio State University Comprehensive Cancer Center LAPS (Columbus, OH), Richard Goldberg (U10CA077658 and U10CA180850); Southeast Clinical Oncology Research Consortium NCORP (Winston-Salem, NC), James Atkins (U10CA045808 and UG1CA189858); University of Chicago Comprehensive Cancer Center LAPS (Chicago, IL), Hedy Kindler (U10CA041287 and U10CA180836); University of Maryland/Greenebaum Cancer Center (Baltimore, MD), Martin Edelman (U10CA031983); University of Vermont College of Medicine (Burlington, VT), Claire Verschraegen (U10CA077406); VCU Massey Cancer Center Minority Underserved NCORP (Richmond, VA), Steven Grossman (U10CA052784 and UG1CA189869); Wake Forest University Health Sciences (Winston-Salem, NC), Heidi Klepin (U10CA003927); Washington University, Siteman Cancer Center LAPS (Saint Louis, MO), Nancy Bartlett (U10CA077440 and U10CA180833); and Weill Medical College of Cornell University (New York, NY), Scott Tagawa (U10CA007968).

Authorship

Contribution: G.L.U. and R.A.L. were responsible for study conception and design; G.L.U., G.M., W.Z., M.J.L., H.D.K., M.R.B., B.L.P., P.W., D.J.D., W.S., W.G.B., C.D.B., R.M.S., and R.A.L. acquired data; G.L.U., R.A.L., S.J.M., K.L., and B.S. analyzed and interpreted the data; G.L.U. drafted the manuscript; and all authors reviewed the draft manuscript and approved the final version for submission.

Conflict-of-interest disclosure: The authors declare no competing financial interests.

Correspondence: Geoffrey L. Uy, Division of Oncology, Washington University School of Medicine, 660 S Euclid Ave, CB 8007, St. Louis, MO 63110; e-mail: guy@wustl.edu.

References

1. Löwenberg B, Ossenkoppele GJ, van Putten W, et al; Dutch-Belgian Cooperative Trial Group for Hemato-Oncology (HOVON); German AML Study Group (AMLSG); Swiss Group for Clinical Cancer Research (SAKK) Collaborative Group. High-dose daunorubicin in older patients with acute myeloid leukemia. *N Engl J Med*. 2009;361(13):1235-1248.
2. Appelbaum FR, Gundacker H, Head DR, et al. Age and acute myeloid leukemia. *Blood*. 2006;107(9):3481-3485.
3. Juliusson G, Antunovic P, Derolf A, et al. Age and acute myeloid leukemia: real world data on decision to treat and outcomes from the Swedish Acute Leukemia Registry. *Blood*. 2009;113(18):4179-4187.
4. Mayer RJ, Davis RB, Schiffer CA, et al; Cancer and Leukemia Group B. Intensive postremission chemotherapy in adults with acute myeloid leukemia. *N Engl J Med*. 1994;331(14):896-903.
5. Kiyoi H, Towatari M, Yokota S, et al. Internal tandem duplication of the FLT3 gene is a novel modality of elongation mutation which causes constitutive activation of the product. *Leukemia*. 1998;12(9):1333-1337.
6. Nakao M, Yokota S, Iwai T, et al. Internal tandem duplication of the flt3 gene found in acute myeloid leukemia. *Leukemia*. 1996;10(12):1911-1918.
7. Schnittger S, Schoch C, Dugas M, et al. Analysis of FLT3 length mutations in 1003 patients with acute myeloid leukemia: correlation to cytogenetics, FAB subtype, and prognosis in the AMLCG study and usefulness as a marker for the detection of minimal residual disease. *Blood*. 2002;100(1):59-66.
8. Yamamoto Y, Kiyoi H, Nakano Y, et al. Activating mutation of D835 within the activation loop of FLT3 in human hematologic malignancies. *Blood*. 2001;97(8):2434-2439.
9. Gale RE, Green C, Allen C, et al; Medical Research Council Adult Leukaemia Working Party. The impact of FLT3 internal tandem duplication mutant level, number, size, and interaction with NPM1 mutations in a large cohort of young adult patients with acute myeloid leukemia. *Blood*. 2008;111(5):2776-2784.
10. Whitman SP, Archer KJ, Feng L, et al. Absence of the wild-type allele predicts poor prognosis in adult de novo acute myeloid leukemia with normal cytogenetics and the internal tandem duplication of FLT3: a cancer and leukemia group B study. *Cancer Res*. 2001;61(19):7233-7239.
11. Whitman SP, Ruppert AS, Radmacher MD, et al. FLT3 D835/I836 mutations are associated with poor disease-free survival and a distinct gene-expression signature among younger adults with de novo cytogenetically normal acute myeloid leukemia lacking FLT3 internal tandem duplications. *Blood*. 2008;111(3):1552-1559.
12. Lazenby M, Gilkes AF, Marrin C, Evans A, Hills RK, Burnett AK. The prognostic relevance of flt3 and npm1 mutations on older patients treated intensively or non-intensively: a study of 1312 patients in the UK NCRI AML16 trial. *Leukemia*. 2014;28(10):1953-1959.
13. Whitman SP, Maharry K, Radmacher MD, et al. FLT3 internal tandem duplication associates with adverse outcome and gene- and microRNA-expression signatures in patients 60 years of age or older with primary cytogenetically normal acute myeloid leukemia: a Cancer and Leukemia Group B study. *Blood*. 2010;116(18):3622-3626.
14. Stone RM, Fischer T, Paquette R, et al. Phase IB study of the FLT3 kinase inhibitor midostaurin with chemotherapy in younger newly diagnosed adult patients with acute myeloid leukemia. *Leukemia*. 2012;26(9):2061-2068.
15. Cortes JE, Kantarjian H, Foran JM, et al. Phase I study of quizartinib administered daily to patients with relapsed or refractory acute myeloid leukemia irrespective of FMS-like tyrosine kinase 3-internal tandem duplication status. *J Clin Oncol*. 2013;31(29):3681-3687.
16. Escudier B, Eisen T, Stadler WM, et al; TARGET Study Group. Sorafenib in advanced clear-cell renal-cell carcinoma. *N Engl J Med*. 2007;356(2):125-134.
17. Llovet JM, Ricci S, Mazzaferro V, et al; SHARP Investigators Study Group. Sorafenib in advanced hepatocellular carcinoma. *N Engl J Med*. 2008;359(4):378-390.
18. Auclair D, Miller D, Yatsula V, et al. Antitumor activity of sorafenib in FLT3-driven leukemic cells. *Leukemia*. 2007;21(3):439-445.
19. Man CH, Fung TK, Ho C, et al. Sorafenib treatment of FLT3-ITD(+) acute myeloid leukemia: favorable initial outcome and mechanisms of subsequent nonresponsiveness associated with the emergence of a D835 mutation. *Blood*. 2012;119(22):5133-5143.
20. Borthakur G, Kantarjian H, Ravandi F, et al. Phase I study of sorafenib in patients with refractory or relapsed acute leukemias. *Haematologica*. 2011;96(1):62-68.
21. Metzelder S, Wang Y, Wollmer E, et al. Compassionate use of sorafenib in FLT3-ITD-positive acute myeloid leukemia: sustained regression before and after allogeneic stem cell transplantation. *Blood*. 2009;113(26):6567-6571.
22. Safaian NN, Czibere A, Bruns I, et al. Sorafenib (Nexavar) induces molecular remission and regression of extramedullary disease in a patient with FLT3-ITD+ acute myeloid leukemia. *Leuk Res*. 2009;33(2):348-350.
23. Ravandi F, Arana Yi C, Cortes JE, et al. Final report of phase II study of sorafenib, cytarabine and idarubicin for initial therapy in younger patients with acute myeloid leukemia. *Leukemia*. 2014;28(7):1543-1545.
24. Röllig C, Serve H, Hüttmann A, et al; Study Alliance Leukaemia. Addition of sorafenib versus placebo to standard therapy in patients aged 60 years or younger with newly diagnosed acute myeloid leukaemia (SORAML): a multicentre, phase 2, randomised controlled trial. *Lancet Oncol*. 2015;16(16):1691-1699.
25. Serve H, Krug U, Wagner R, et al. Sorafenib in combination with intensive chemotherapy in elderly patients with acute myeloid leukemia: results from a randomized, placebo-controlled trial. *J Clin Oncol*. 2013;31(25):3110-3118.
26. Cheson BD, Bennett JM, Kopecky KJ, et al; International Working Group for Diagnosis, Standardization of Response Criteria, Treatment Outcomes, and Reporting Standards for Therapeutic Trials in Acute Myeloid Leukemia. Revised recommendations of the International Working Group for Diagnosis,

Standardization of Response Criteria, Treatment Outcomes, and Reporting Standards for Therapeutic Trials in Acute Myeloid Leukemia. *J Clin Oncol*. 2003;21(24):4642-4649.

27. Murphy KM, Levis M, Hafez MJ, et al. Detection of FLT3 internal tandem duplication and D835 mutations by a multiplex polymerase chain reaction and capillary electrophoresis assay. *J Mol Diagn*. 2003;5(2):96-102.
28. Levis M, Brown P, Smith BD, et al. Plasma inhibitory activity (PIA): a pharmacodynamic assay reveals insights into the basis for cytotoxic response to FLT3 inhibitors. *Blood*. 2006;108(10):3477-3483.
29. Döhner H, Estey EH, Amadori S, et al; European LeukemiaNet. Diagnosis and management of acute myeloid leukemia in adults: recommendations from an international expert panel, on behalf of the European LeukemiaNet. *Blood*. 2010;115(3):453-474.
30. Levis M, Ravandi F, Wang ES, et al. Results from a randomized trial of salvage chemotherapy followed by lestaurtinib for patients with FLT3 mutant AML in first relapse. *Blood*. 2011;117(12):3294-3301.
31. Stone RM, Mandrekar S, Sanford BL, et al. The multi-kinase inhibitor midostaurin (M) prolongs survival compared with placebo (P) in combination with daunorubicin (D)/cytarabine (C) induction (ind), high-dose C consolidation (consol), and as maintenance (maint) therapy in newly diagnosed acute myeloid leukemia (AML) Patients (pts) Age 18-60 with FLT3 Mutations (mut): an international prospective randomized (rand) P-controlled double-blind trial (CALGB 10603/RATIFY [Alliance]) [abstract]. *Blood*. 2015;126(23). Abstract 6.
32. Welch JS, Ley TJ, Link DC, et al. The origin and evolution of mutations in acute myeloid leukemia. *Cell*. 2012;150(2):264-278.
33. Papaemmanuil E, Gerstung M, Bullinger L, et al. Genomic classification and prognosis in acute myeloid leukemia. *N Engl J Med*. 2016;374(23):2209-2221.
34. Shih LY, Huang CF, Wu JH, et al. Internal tandem duplication of FLT3 in relapsed acute myeloid leukemia: a comparative analysis of bone marrow samples from 108 adult patients at diagnosis and relapse. *Blood*. 2002;100(7):2387-2392.