

Washington University School of Medicine Digital Commons@Becker

Open Access Publications

2017

FGFR2 amplification in colorectal adenocarcinoma

Jamal H. Carter

National Institutes of Health

Catherine E. Cottrell

Washington University School of Medicine in St. Louis

Samantha N. McNulty

Washington University School of Medicine in St. Louis

Katinka A. Vigh-Conrad

Washington University School of Medicine in St. Louis

Stephen Lamp

Washington University School of Medicine in St. Louis

See next page for additional authors

Follow this and additional works at: https://digitalcommons.wustl.edu/open_access_pubs

Recommended Citation

Carter, Jamal H.; Cottrell, Catherine E.; McNulty, Samantha N.; Vigh-Conrad, Katinka A.; Lamp, Stephen; Heusel, Jonathan W.; and Duncavage, Eric J., "FGFR2 amplification in colorectal adenocarcinoma." *Cold Spring Harbor Molecular Case Studies*.3,6. 1-11. (2017).

https://digitalcommons.wustl.edu/open_access_pubs/6745

This Open Access Publication is brought to you for free and open access by Digital Commons@Becker. It has been accepted for inclusion in Open Access Publications by an authorized administrator of Digital Commons@Becker. For more information, please contact engeszer@wustl.edu.

Authors

Jamal H. Carter, Catherine E. Cottrell, Samantha N. McNulty, Katinka A. Vigh-Conrad, Stephen Lamp, Jonathan W. Heusel, and Eric J. Duncavage



FGFR2 amplification in colorectal adenocarcinoma

Jamal H. Carter,¹ Catherine E. Cottrell,^{2,3} Samantha N. McNulty,²
Katinka A. Vigh-Conrad,³ Stephen Lamp,² Jonathan W. Heusel,^{2,3}
and Eric J. Duncavage²

¹Department of Transfusion Medicine, Clinical Center, National Institutes of Health, Bethesda, Maryland 20892, USA; ²Department of Pathology and Immunology, Washington University in St. Louis, Missouri 63130, USA; ³Department of Genetics, Washington University in St. Louis, Missouri 63130, USA

Abstract FGFR2 is recurrently amplified in 5% of gastric cancers and 1%–4% of breast cancers; however, this molecular alteration has never been reported in a primary colorectal cancer specimen. Preclinical studies indicate that several FGFR tyrosine-kinase inhibitors (TKIs), such as AZD4547, have in vitro activity against the FGFR2-amplified colorectal cell line, NCI-H716. The efficacy of these inhibitors is currently under investigation in clinical trials for breast and gastric cancer. Thus, better characterizing colorectal tumors for FGFR2 amplification could identify a subset of patients who may benefit from FGFR TKI therapies. Here, we describe a novel FGFR2 amplification identified by clinical next-generation sequencing in a primary colorectal cancer. Further characterization of the tumor by immunohistochemistry showed neuroendocrine differentiation, similar to the reported properties of the NCI-H716 cell line. These findings demonstrate that the spectrum of potentially clinically actionable mutations detected by targeted clinical sequencing panels is not limited to only single-nucleotide polymorphisms and insertions/deletions but also to copy-number alterations.

[Supplemental material is available for this article.]

INTRODUCTION

Colorectal cancer (CRC) is a leading cause of mortality and morbidity and constitutes the third most common malignancy diagnosed in both men and women (Siegel et al. 2016). CRC tumors are generally divided into two broad, but biologically distinct, molecular subtypes: tumors characterized by microsatellite instability (MSI) and tumors characterized by chromosomal instability (CI). MSI occurs when mismatch repair (MMR) pathways become inactivated, either through methylation of the MLH1 promoter (typically in a CpG island methylator phenotype background) or through mutational inactivation of MLH1 and/or other MMR pathway genes. MSI tumors constitute ~15% of sporadic CRC cases. They typically present in the right hemicolon and are associated with BRAF V600E mutations (Cancer Genome Atlas 2012). CI tumors constitute ~85% of sporadic CRC cases. This heterogeneous group is characterized by mutations in APC, KRAS, and TP53, as well as frequent, recurrent somatic copy-number alterations (SCNAs) (Cancer Genome Atlas 2012; Wang et al. 2015).

Although many recurrent mutations have been identified in CRC, only a few have been validated as predictive biomarkers. Anti-EGFR antibody therapy (e.g., panitumumab and cetuximab) has proven effective in metastatic tumors with wild-type MAPK pathway genes (Amado et al. 2008), but mutations in tumors with KRAS, NRAS, and/or BRAF confer

Corresponding author:
eduncavage@path.wustl.edu

© 2017 Carter et al. This article is distributed under the terms of the Creative Commons Attribution License, which permits unrestricted reuse and redistribution provided that the original author and source are credited.

Ontology terms: colon cancer; neoplasm of the gastrointestinal tract

Published by Cold Spring Harbor Laboratory Press

doi: 10.1101/mcs.a001495

decreased sensitivity to these drugs (National Comprehensive Cancer Network 2016). Likewise, the clinical importance of most of the reported SCNAs is uncertain (Wang et al. 2015), but rarely a clinically actionable discovery is made. In a case report of a patient with CRC with amplification and overexpression of ERBB2, a dramatic radiographic response was observed upon treatment with trastuzumab (Sorscher 2011), similar to the response observed in ERBB2-amplified metastatic breast cancer (Vogel et al. 2002).

Here, we present the multiplatform, pathologic characterization of a case of CRC submitted for routine clinical analysis. This sample was subjected to next-generation sequencing (NGS) following hybrid capture–based enrichment of a 425-kb target space. Although this assay was intended to detect single-nucleotide variants and small insertions and deletions (indels) in cancer relevant genes, a read depth (>5000 \times , reference mean 1135 \times) suggestive of a focal amplification was noted at the FGFR2 locus, a SCNA that is considered medically actionable in other cancer types. Bioinformatic software designed to predict SCNA from tumor samples confirmed the FGFR2 amplification from sequencing data, and findings were verified by chromosomal microarray and fluorescence in situ hybridization (FISH). This is the first report of a FGFR2 amplification in a non-cell-line-derived, clinical CRC specimen obtained during the course of routine pathologic examination. This case highlights the utility of SCNA prediction from clinical NGS data, as copy-number variations can be detected in the absence of predefined expectations.

RESULTS

Clinical Presentation

A 56-yr-old female with a questionable history of ulcerative colitis underwent a total abdominal colectomy for a 6-cm, poorly differentiated, signet-ring adenocarcinoma in the sigmoid colon (Fig. 1, top inset). The specimen revealed transmural and serosal involvement of the perirectal and pericolic soft tissue by the tumor, as well as widespread lymphovascular space invasion and metastatic involvement of 14 of 18 pericolic lymph nodes. Altogether, this constituted stage IIIC disease. MMR markers MLH1, PMS2, MSH2, and MSH6 showed retained expression by immunohistochemistry (IHC) (Fig. 2).

Adjuvant chemotherapy with a standard first-line regimen (FOLFOX) was initiated but stopped after eight cycles because of side effects. Further imaging was performed to assess the disease status. This revealed bulky retroperitoneal and portahepatic lymphadenopathy, multiple metastatic, cardiophrenic lymph nodes, and multiple hepatic lesions. A fine needle aspiration of a liver lesion confirmed metastasis, indicating stage IV disease; however, there was insufficient tissue for further molecular studies. An alternative regimen (FOLFIRI) was then initiated, and tissue from the patient's primary colon cancer resection specimen was submitted to Genomics and Pathology Services at Washington University in Saint Louis (GPS@WUSTL) for mutational profiling. The GPS panel (described below) is a next-generation sequencing–based panel that targets 48 common cancer genes and is performed in a certified clinical environment, permitting return of patient results and third-party billing.

Genomic Analysis, Microarray, and FISH

A single reportable mutation, TP53 p.D281E (Chr17:g.7577095G>T; NM_000546:c.843C>A), was identified among the 48 genes analyzed on the GPS@WUSTL solid tumor panel (Table 1). According to the COSMIC (Forbes et al. 2015) and IARC TP53 mutation (Petitjean et al. 2007) databases, the p.D281E variant in TP53 has been described as a deleterious somatic mutation in various carcinomas, although it has not been specifically previously reported in CRC. Functional data from promoter response element

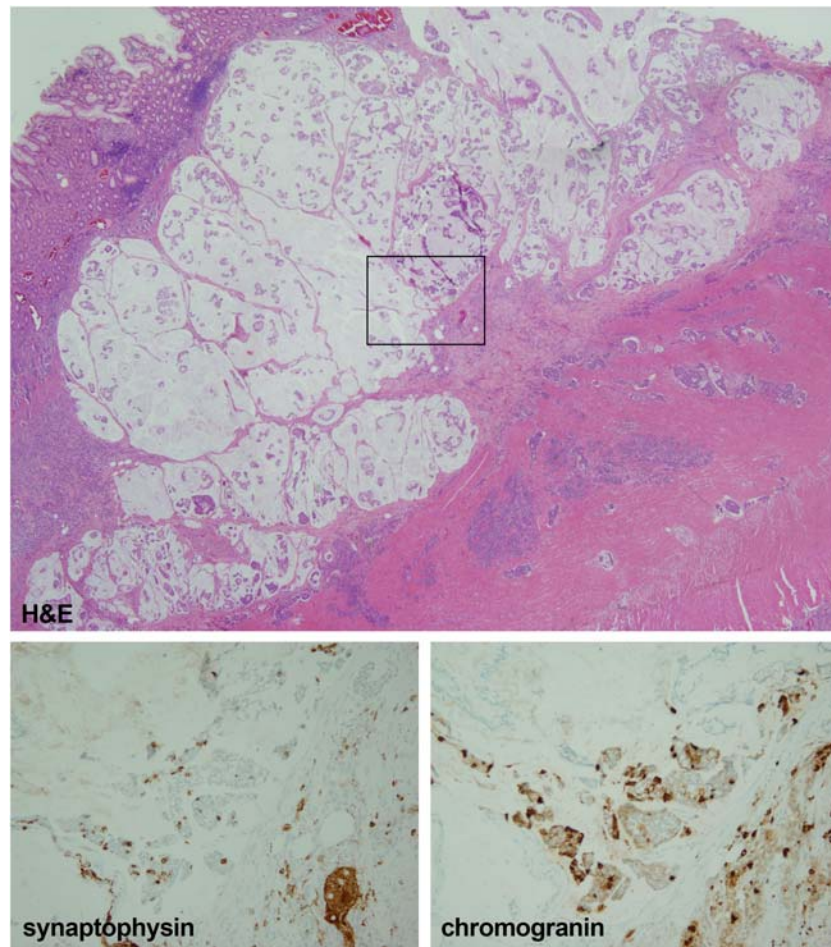


Figure 1. Neuroendocrine marker immunostains. (Top) H&E, 2x. Poorly differentiated, signet-ring adenocarcinoma showing abundant mucin in this section. (Bottom left) Synaptophysin, 20x. Focal expression present in the malignant cells. (Bottom right) Chromogranin, 20x. Malignant glands showing patchy expression.

transactivation experiments indicate that this variant results in loss of protein function (Jordan et al. 2010).

Standard quality control metrics indicated significant depth of coverage in the region of the *FGFR2* gene. To further explore the possibility of copy-number variation (CNV), genome-wide copy-number information was extracted from the targeted NGS data using two somatic copy-number aberration detection tools: CopywriteR (Kuilman et al. 2015) and CNVkit (Talevich et al. 2014, 2016). Both tools revealed a focal copy number amplification involving the *FGFR2* locus in a background of chromosomal aneuploidy (Fig. 3A,B). Consistent with NGS read depths, microarray data confirmed the presence of a focal, somatic *FGFR2* amplification (Fig. 3B). The 1.08-Mb amplified region encompassed the entirety of the *FGFR2* gene, along with the 3' genic regions of *WDR11* and *ATE1* (hg19 Chr 10:122,608,791-123,684,530). FISH also revealed a striking amplification of *FGFR2* in tumor-involved tissue (Fig. 3C). Among 100 analyzed nuclei in the tumor tissue, the average RP11-62L18 probe signal corresponding to *FGFR2* was 63.91, whereas the average chromosome enumeration probe (CEP) 10 control signal was 2.64, yielding a ratio of 24.2. Analysis of the patient's normal colonic tissue demonstrated an average RP11-62L18 (*FGFR2*) signal number of 1.92 and

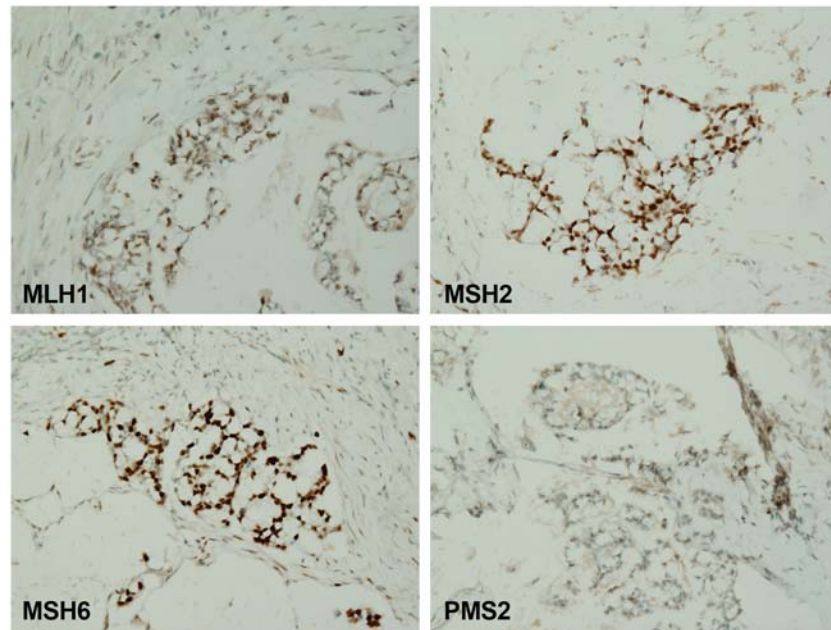


Figure 2. MMR immunostains showing retained expression of all four MMR markers. (Top left) MLH1, 20x. (Top right) MSH2, 20x. (Bottom left) MSH6, 20x. (Bottom right) PMS2, 20x.

average CEP 10 signal number of 1.87, yielding a ratio of 1.02. FGFR2 gene amplification has only recently been documented in CRC, where it was identified in the NCI-H716 colon cancer cell line (Mathur et al. 2014).

Protein Expression Analysis with IHC

The NCI-H716 CRC cell line harboring the FGFR2 amplification has features of endocrine differentiation, which is unusual for CRC. IHC studies indicated that NCI-H716 shows expression of chromogranin A, mucin, glucagon-like peptide-1 (GLP-1), and receptors for gastrin, somatostatin, and serotonin (de Bruïne et al. 1992; Reimer et al. 2001). We followed up on this observation, assessing the extent of neuroendocrine differentiation in the patient's tumor by assessing the expression of synaptophysin and chromogranin A using IHC assays commonly implemented in the anatomic pathology laboratory. Patchy expression of chromogranin and focal expression of synaptophysin was noted in the malignant cells of the tumor specimen, comprising ~10% and <5% of the total tumor cellularity, respectively (Fig. 1).

Table 1. Detected somatic variants

Chr	Location	Class	Gene	Allele change	RefSeq ID	cDNA pos	AA change	Mutation	dbSNP	SIFT score	PolyPhen-2 pred	Mutation type	Cancer gene	No. of reads ref/alt	Genotype
Chr17	7577095	SNV	TP53	G>T	NM_000546	NM_000546: c.843C>A	NP_000537: p.D281E	missense	N/A	0.01	0.973	somatic	Y	423/ 405	Het

AA, amino acid; dbSNP, Database for Short Genetic Variations; SIFT, Sorting Intolerant from Tolerant; PolyPhen-2, Polymorphism Phenotyping v2; SNV, single-nucleotide variant.

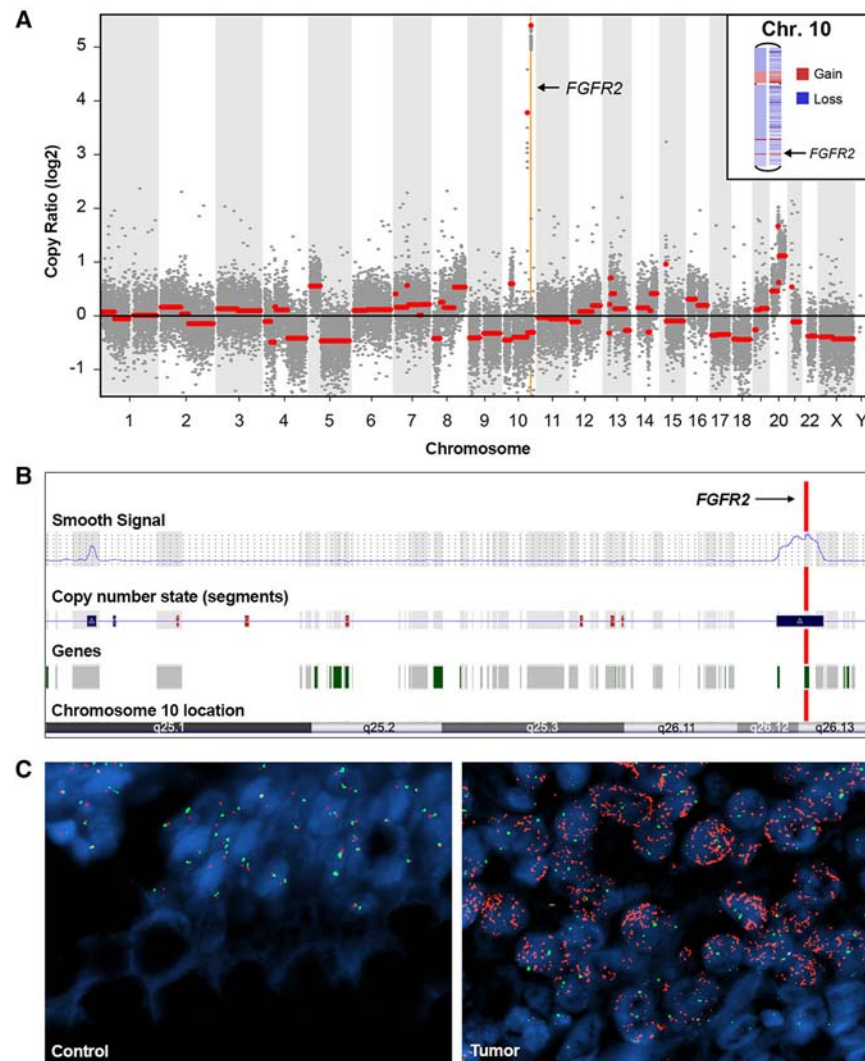


Figure 3. Multimodal analysis of FGFR2 in the tumor. (A) Targeted NGS-based virtual karyotype (CNVkit) showing background aneuploidy and an amplification event involving a focal region of Chromosome 10 (Chr10:122737302–123454446) that includes FGFR2. (B) Cytoscan microarray output from the tumor tissue revealing amplification of the region involving FGFR2. (C) Fluorescence in situ hybridization of tumor-involved (Tumor) and tumor-uninvolved (Control) colonic tissue from the patient's colectomy. FGFR2 probe (RP11-62L18, red) to Chromosome 10 enumeration probe (CEP 10, green) ratio showing a high copy-number ratio of 24.2 in the tumor (right) versus 1.92 in the control (left).

DISCUSSION

NGS-based profiling of the tumor genome identified a single nonsynonymous mutation among the many genes noted for recurrent mutations in CRC (e.g., KRAS, NRAS, BRAF, PIK3CA) and a striking focal amplification of the FGFR2 gene. FGFR2 amplification is thought to occur in 5% of gastric cancers and 1%–4% of breast cancers (Heiskanen et al. 2001; Turner et al. 2010; Jung et al. 2012). In gastric cancer, FGFR2 amplification is associated with poorer overall survival (Su et al. 2014; Shoji et al. 2015). Preclinical, in vitro, and in vivo studies

suggest that breast and gastric cancer cell lines with FGFR2 amplifications may be sensitive to FGFR inhibitors (Jain and Turner 2012; Xie et al. 2013); clinical trials are ongoing.

The only report of FGFR2 amplification in CRC was from the NCI-H716 colon cancer cell line (Mathur et al. 2014). Through a series of functional assays, Mathur et al.'s (2014) study demonstrated that NCI-H716 cells are dependent on FGFR2 amplification and overexpression for survival and proliferation, and they appear to be sensitive to FGFR inhibitors (Mathur et al. 2014; Medico et al. 2015). To ascertain the frequency of this molecular event and the resultant FGFR2 protein overexpression, Mathur et al. performed FGFR2 IHC on a series of primary and lymph node–metastatic CRC samples in a tissue microarray. Although they identified FGFR2 overexpression of five samples (1.5% of >300 tested from various body sites), FISH was negative for FGFR2 amplification in all samples tested. Thus, this is the first report to identify FGFR2 amplification in a CRC tumor sample obtained directly from a patient's primary tumor and the first non-cell-line-derived, clinical case harboring the aberration.

Although not reported as part of the clinical panel, analysis of the raw sequencing data by CopywriteR and CNVkit also demonstrated an amplification of the ASXL1 gene (Supplemental Table 1); the ASXL1 gene and 51 other genes were targeted by the clinical sequencing panel but were not analyzed or reported as the part of the solid tumor gene panel. The ASXL1 gene is involved in chromatin modification and is mutated in up to 20% of myelodysplastic syndrome cases and a smaller percentage of acute myeloid leukemias (Cancer Genome Atlas Research et al. 2013; Haferlach et al. 2014). In hematologic malignancies ASXL1 mutations tend to be small insertions or deletions that result in frameshifts. However, ASXL1 amplifications appear to be reasonably common in solid tumors and are present in >20% of uterine carcinosarcomas and ~10% of colorectal cancers, according to TCGA data (Cancer Genome Atlas 2012; Zhao et al. 2016). ASXL1 amplifications have no known prognostic significance in solid tumors and may be part of larger genomic events that span several genes on Chromosome 20.

The NCI-H716 cell line has been demonstrated to express chromogranin A, mucin, GLP-1, and receptors for gastrin, somatostatin, and serotonin (de Bruïne et al. 1992; Reimer et al. 2001). We followed up on this potential insight by assessing the extent of neuroendocrine differentiation of our case by utilizing the standard, routine IHC stains commonly used in the anatomic pathology laboratory for this purpose: synaptophysin and chromogranin A. We found the patient's tumor had focal to patchy staining of both markers, indicating some partial neuroendocrine differentiation, similar to the NCI-H716 cell line. However, it has been documented that up to 40% of CRCs may have detectable neuroendocrine marker expression by IHC (Bosman and World Health Organization 2010). Furthermore, according to the World Health Organization classification scheme for digestive tumors, a CRC specimen must show 30% of an adenocarcinoma and a neuroendocrine component, each, to qualify for classification as a "mixed adenoneuroendocrine carcinomas (MANEC)" (International Classification of Diseases, ICD10: C18–C20) (Bosman and World Health Organization 2010). Our case fell short of these criteria. Nevertheless, this association possibly suggests an interesting association that may warrant further inquiry. The spectrum of molecular abnormalities present in MANECs is a poorly studied area, with only case reports and small case series in the literature that primarily survey small genomic changes, such as single-nucleotide variants and indels of <10 bp (Scardoni et al. 2014; Vanacker et al. 2014). In one study that examined six cases of MANEC by targeted NGS panel, TP53 mutations were the most frequently identified molecular abnormality (Scardoni et al. 2014). To the best of our knowledge, no study has comprehensively surveyed the SCNAs present in MANECs or CRCs with neuroendocrine differentiation, precluding the comparison of our case to the frequency of FGFR2 amplification in neuroendocrine-expressing CRC based on the known, extant literature.

The striking signet-ring morphology of the tumor cells in this case, the lack of an identifiable adenomatous mucosal component, and the neuroendocrine differentiation are also

very reminiscent of goblet cell carcinoids (GCCs) (International Classification of Diseases, ICD10: C23–C24). However, GCCs are anatomically located within the vermiform appendix, almost exclusively (Roy and Chetty 2010). Similar to the scenario with MANECs, no comprehensive SCNA study exists in the literature for GCCs, likely as a consequence of their rarity. Interestingly, the NCI-H716 index case is derived from the cecum, which is anatomically proximal to the appendix. Although NCI-H716 was formally diagnosed as a colorectal adenocarcinoma, and GCC had been described at least a decade prior to the development of the NCI-H716 cell line, GCC was not a widely recognized diagnostic entity at the time (Park et al. 1987; Pahlavan and Kanthan 2005; Gagnon and Brubaker 2016). Similar to the scenario with MANECs, no comprehensive SCNA study exists in the literature for GCCs. However, loss of heterozygosity was frequently identified in the 16 cases of GCCs included in a study that used targeted dinucleotide microsatellite markers for 11q, 16q, and 18q, a pattern associated with midgut carcinoids (Stancu et al. 2003). Chromosome 11 is present in a single copy in the NCI-H716 cell line, but Chromosomes 16 and 18 are present at normal levels (Atcc 2016). None of these cytogenomic abnormalities were identified in our case.

Finally, this case report demonstrates that potentially actionable copy-number alterations can be detected from NGS data generated from small, targeted, clinical NGS panels. Although only a minority of clinical laboratories currently report SCNAs as part validated clinical testing, evidence of large amplifications, such as this FGFR2 amplification, can be suggested by a review of the coverage-based QC metrics at case sign-out. In the absence of a formally validated SCNA detection pipeline, clinical laboratories may opt to detect copy gains by simply imposing an upper boundary for gene level coverage (e.g., 5000 \times , given a mean reference coverage depth of 1132 \times). Going forward it has become increasingly clear that SCNA detection will become an important part of clinical molecular genetic testing.

In conclusion, the genomic, histologic, and IHC characterization of a clinical case of primary CRC with FGFR2 amplification unveiled phenotypic and genotypic similarities with the index cell line case for the CRC cell line NCI-H716. Currently, it remains unclear how frequent FGFR2 amplifications are in patients with CRC, much less in CRC with neuroendocrine differentiation or GCC morphology. The insight contributed by this report will be helpful in identifying the CRC patient cohort that can potentially benefit from FGFR tyrosine-kinase inhibitor therapy and in further establishing and clarifying the possible association between neuroendocrine differentiation, mucinous signet-ring morphology, and FGFR2 amplification. Moreover, these findings demonstrate the utility of routine, clinical NGS panels in uncovering novel, potentially actionable, somatic mutations in cancer.

METHODS

Next-Generation Sequencing and Data Analysis

Genomic DNA was isolated from a formalin-fixed paraffin-embedded (FFPE) tissue block originating from the primary colon resection specimen using the QIAamp DNeasy Blood and Tissue Kit (QIAGEN), and sample quality and quantity was assessed by Qubit (Thermo Fisher Scientific) and Nanodrop (Thermo Fisher Scientific). Seven hundred and fifty nanograms of DNA was sheared in the Covaris S220 series sonicator to an average fragment size of 140–230 bp, as measured by Bioanalyzer (Agilent Technologies). Fragmented DNA was end-repaired, A-tailed, and indexed using the KAPA Hyper Prep Kit (KAPA Biosystems). Adapter-ligated DNA was subjected to limited amplification prior to hybridization with custom cDNA capture probes (IDT). The total size of the target space was 425 kb, encompassing all coding exons of 99 cancer relevant genes, selected introns, and intergenic regions targeted for quality control. The hybridized product was washed, amplified with the

KAPA amplification kit, and sequenced on an Illumina HiSeq 2500 to generate 2× 101-bp paired-end reads.

Analysis and interpretation was performed as previously described (Hagemann et al. 2014).

Reads were aligned to the human reference (UCSC build hg19 / NCBI build 37.2) using Novoalign (Novocraft Technologies). PCR duplicates were marked with Picard Tools (version 1.53, <http://picard.sourceforge.net>), and alignment files were converted to mpileup format using SAMtools (version 0.1.18-0.1.19; Li et al. 2009). Single-nucleotide variants (SNVs) with depth $\geq 50\times$ and Fisher's exact test of strand bias ≤ 100 were detected using VarScan2 (version 2.3.6; Koboldt et al. 2009), and visualized in Integrative Genomics Viewer (version 2.0.16 or later; Robinson et al. 2011). Reports were generated using the Clinical Genomicist Workstation v2.1.1 (PierianDx). Single-nucleotide variants with global mean allele frequencies in the population of $> 1\%$ were considered "known SNPs" and excluded from this report. Nonsynonymous SNVs that were not known polymorphisms were deemed clinically relevant and reportable. Quality and gene-level read depth metrics are available in [Supplemental Tables S1 and S2](#).

Copy-Number Analysis

Copy-number profiles were determined by CopywriteR (Kuilman et al. 2015) and CNVkit (Talevich et al. 2014, 2016) using the same alignment files employed in SNV calling. CopywriteR was run with window size set to 50 kb and no matched or normal reference. CNVkit's standard batch pipeline was run with default parameters. Fifteen FFPE tissue samples from patients without cancer and previously processed through the same analysis pipeline were included as pooled controls to facilitate the required normalization for CNVkit; to further confirm the absence of CNAs in these 15 control samples, all cases were tested by CopywriteR (which does not require normal controls) and showed no evidence of CNAs.

Microarray

Copy-number alteration was assessed using the Affymetrix CytoScan HD array (Affymetrix) containing approximately 2.67 million markers including 1.9 million nonpolymorphic probes and nearly 750,000 probes capable of single-nucleotide polymorphism (SNP) detection. DNA was derived from two sections of the patient's colectomy specimen representing tumor and normal colonic mucosa. Beginning with 1 μg of input DNA, the specimens were enzymatically digested, adaptor-ligated, and amplified prior to hybridization on the array platform. Data were derived using an Affymetrix GeneChip Scanner 3000 7G and copy-number status was determined in comparison to an *in silico* FFPE-specific reference file (CytoScanHD_Array.na33.r2.FFPE.v3.REF_MODEL). Analysis was performed using Chromosome Analysis Suite v3.1.0.15 (Affymetrix).

Fluorescence In Situ Hybridization

FISH was performed using the BAC clone, RP11-62L18 (Empire Genomics), mapping to the FGFR2 gene and with CEP 10 (Empire Genomics) mapping to the centromeric region of Chromosome 10. FFPE tumor-involved and normal colonic tissue from the patient were sectioned at 5 microns and mounted on positively charged slides. Corresponding hematoxylin and eosin (H&E)-stained slides were reviewed by a pathologist to mark for areas of tumor and normal tissue and then transcribed to the unstained slides for FISH. Slides were deparaffinized with Citra Solv and dehydrated in 100% ethanol before specimen pretreatment using the Pretreatment kit II (Abbott Molecular) including Pretreatment solution (NaSCN) at 80°C, Protease (Pepsin 2500–3000 U/mg, lyophilized) in Protease buffer (0.2 N HCl) at 37°C. After an ethanol dehydration series (70%, 85%, and 100%), slides were air-dried, and 12 μL of

probe mixture was applied. Coverslipped, sealed slides were then placed in a preheated 73°C slide moat (Boekel Scientific), allowing the patient DNA and the probe to denature for 5 min, followed by an overnight hybridization at 37°C. Posthybridization wash was performed using 2× SSC at 74 ± 1°C and 2× SSC at room temperature before counterstaining with DAPI (4',6'-diamidino-2-phenylindole). Using a BX61 fluorescent microscope (Olympus), the nuclei containing the RP11-62L18 (FGFR2) probe signals and the CEP 10 control signals were examined within the areas marked, with 100 nuclei used to generate probe counts. Signal patterns were documented using the Jai Progressive Scan camera and CytoVision Imaging System (Leica Biosystems).

Immunohistochemistry

Neuroendocrine (chromogranin and synaptophysin) and MMR IHC was performed according to standard histological technique as previously described (Kushnir et al. 2014). Briefly, 5-µm thick sections from the FFPE tissue block were labeled using a Benchmark XT automated slide staining system (Ventana Medical Systems, Inc.) following standard protocols. Prediluted concentrations of the following monoclonal antibodies were used: anti-Chromogranin A (Ventana Medical Systems, Inc.; clone LK2H10; monoclonal); anti-Synaptophysin PMS2 (Cell Marque, Co.; clone MRQ-40; monoclonal); anti-MLH1 (Ventana Medical Systems, Inc.; clone M1; monoclonal), anti-PMS2 (Cell Marque, Co.; clone EPR3947; monoclonal), anti-MSH2 (Cell Marque, Co.; clone G219-1129; monoclonal), and anti-MSH6 (Ventana Medical Systems, Inc.; clone 44; monoclonal). Ventana's ultraView Universal DAB Detection Kit was utilized and staining-visualized using hydrogen peroxide substrate and a 3,3'-diaminodenzidine tetrahydrochloride (DAB) chromogen. Manufacture recommendations were adhered to for antigen retrieval conditions (Ventana CC1, EDTA-Tris, pH 8.0 solution). Nuclear staining for MLH1, PMS2, MSH2, and MSH6 was considered positive. Lymphocytes and uninvolved colonic mucosa were used as an internal positive control for the MMR markers. Normal control colon was used as a positive control for the chromogranin and synaptophysin IHC.

ADDITIONAL INFORMATION

Data Deposition and Access

Data were generated as part of routine patient care and consent was not obtained for data sharing in publicly accessible databases. The FGFR2 amplification has been reported as a variant of unknown significance in ClinVar (<http://www.ncbi.nlm.nih.gov/clinvar/>) under accession number SCV000297799.1.

Competing Interest Statement

C.E.C. and J.W.H. are consultants for PierianDX. E.J.D. is a consultant for Cofactor Genomics.

Referees

Marilyn M. Li
 Anonymous

Received October 2, 2016;
 accepted in revised form May 30,
 2017.

Ethics Statement

These data were generated as part of routine patient care, have been reviewed by the Washington University Office of Human Research Protection, and do not meet the criteria for human studies research.

Author Contributions

J.H.C, E.J.D., and C.E.C. contributed to study design. J.H.C, C.E.C, S.L, S.N.M., and E.J.D. contributed to the analysis and interpretation of genomic results. J.H.C. contributed to analysis and interpretation of the histologic results. K.A.V. contributed to figure design and layout. S.L. contributed to analysis and interpretation of FISH results. All authors contributed to manuscript writing, editing, and approval.

REFERENCES

- Amado RG, Wolf M, Peeters M, Van Cutsem E, Siena S, Freeman DJ, Juan T, Sikorski R, Suggs S, Radinsky R, et al. 2008. Wild-type KRAS is required for panitumumab efficacy in patients with metastatic colorectal cancer. *J Clin Oncol* 26: 1626–1634.
- ATCC. 2016. NCI-H716 [H716] ATCC® CCL-251 Homo sapiens cecum Product sheet. from <http://www.atcc.org/products/all/CCL-251.aspx>.
- Bosman FT, World Health Organization and International Agency for Research on Cancer. 2010. WHO classification of tumours of the digestive system. International Agency for Research on Cancer, Lyon.
- Cancer Genome Atlas Network. 2012. Comprehensive molecular characterization of human colon and rectal cancer. *Nature* 487: 330–337.
- Cancer Genome Atlas Research Network, Ley TJ, Miller C, Ding L, Raphael BJ, Mungall AJ, Robertson A, Hoadley K, Triche TJ Jr, Laird PW, et al. 2013. Genomic and epigenomic landscapes of adult de novo acute myeloid leukemia. *N Engl J Med* 368: 2059–2074.
- de Bruïne AP, Dinjens WN, Pijls MM, vd Linden EP, Rousch MJ, Moerkerk PT, de Goeij AF, Bosman FT. 1992. NCI-H716 cells as a model for endocrine differentiation in colorectal cancer. *Virchows Arch B Cell Pathol Incl Mol Pathol* 62: 311–320.
- Forbes SA, Beare D, Gunasekaran P, Leung K, Bindal N, Boutselakis H, Ding M, Bamford S, Cole C, Ward S, et al. 2015. COSMIC: exploring the world's knowledge of somatic mutations in human cancer. *Nucleic Acids Res* 43: D805–D811.
- Gagnon J, Brubaker PL. 2016. NCI-H716 cells, pp. 221–228. Springer, Berlin.
- Haferlach T, Nagata Y, Grossmann V, Okuno Y, Bacher U, Nagae G, Schnittger S, Sanada M, Kon A, Alpermann T, et al. 2014. Landscape of genetic lesions in 944 patients with myelodysplastic syndromes. *Leukemia* 28: 241–247.
- Hagemann IS, Devarakonda S, Lockwood CM, Spencer DH, Guebert K, Bredemeyer AJ, Al-Kateb H, Nguyen TT, Duncavage EJ, Cottrell CE, et al. 2014. Clinical next-generation sequencing in patients with non-small cell lung cancer. *Cancer* 121: 631–639.
- Heiskanen M, Kononen J, Bärlund M, Torhorst J, Sauter G, Kallioniemi A, Kallioniemi O. 2001. CGH, cDNA and tissue microarray analyses implicate FGFR2 amplification in a small subset of breast tumors. *Anal Cell Pathol* 22: 229–234.
- Jain VK, Turner NC. 2012. Challenges and opportunities in the targeting of fibroblast growth factor receptors in breast cancer. *Breast Cancer Res* 14: 208.
- Jordan JJ, Inga A, Conway K, Edmiston S, Carey LA, Wu L, Resnick MA. 2010. Altered-function p53 missense mutations identified in breast cancers can have subtle effects on transactivation. *Mol Cancer Res* 8: 701–716.
- Jung EJ, Jung EJ, Min SY, Kim MA, Kim WH. 2012. Fibroblast growth factor receptor 2 gene amplification status and its clinicopathologic significance in gastric carcinoma. *Hum Pathol* 43: 1559–1566.
- Koboldt DC, Chen K, Wylie T, Larson DE, McLellan MD, Mardis ER, Weinstock GM, Wilson RK, Ding L. 2009. VarScan: variant detection in massively parallel sequencing of individual and pooled samples. *Bioinformatics* 25: 2283–2285.
- Kuilman T, Velds A, Kemper K, Ranzani M, Bombardelli L, Hoogstraat M, Nevedomskaya E, Xu G, de Rooter J, Lolkema MP, et al. 2015. CopywriteR: DNA copy number detection from off-target sequence data. *Genome Biol* 16: 49.
- Kushnir VM, Nalbantoglu I, Watson R, Goodwin J, Safar E, Chokshi RV, Azar RR, Davidson NO. 2014. Advanced colorectal adenomas in patients under 45 years of age are mostly sporadic. *Dig Dis Sci* 59: 2757–2764.
- Li H, Handsaker B, Wysoker A, Fennell T, Ruan J, Homer N, Marth G, Abecasis G, Durbin R; 1000 Genome Project Data Processing Subgroup. 2009. The Sequence Alignment/Map format and SAMtools. *Bioinformatics* 25: 2078–2079.
- Mathur A, Ware C, Davis L, Gazdar A, Pan BS, Lutterbach B. 2014. FGFR2 is amplified in the NCI-H716 colorectal cancer cell line and is required for growth and survival. *PLoS One* 9: e98515.
- Medico E, Russo M, Picco G, Cancelliere C, Valtorta E, Corti G, Buscarino M, Isella C, Lamba S, Martinoglio B, et al. 2015. The molecular landscape of colorectal cancer cell lines unveils clinically actionable kinase targets. *Nat Commun* 6: 7002.
- National Comprehensive Cancer Network. 2016. Colon Cancer (Version 2.2016). From https://www.nccn.org/professionals/physician_gls/pdf/colon.pdf.
- Pahlavan PS, Kanthan R. 2005. Goblet cell carcinoma of the appendix. *World J Surg Oncol* 3: 36.
- Park JG, Kramer BS, Steinberg SM, Carmichael J, Collins JM, Minna JD, Gazdar AF. 1987. Chemosensitivity testing of human colorectal carcinoma cell lines using a tetrazolium-based colorimetric assay. *Cancer Res* 47: 5875–5879.

- Petitjean A, Mathe E, Kato S, Ishioka C, Tavtigian SV, Hainaut P, Olivier M. 2007. Impact of mutant p53 functional properties on TP53 mutation patterns and tumor phenotype: lessons from recent developments in the IARC TP53 database. *Hum Mutat* 28: 622–629.
- Reimer RA, Darimont C, Gremlich S, Nicolas-Métral V, Rüegg UT, Macé K. 2001. A human cellular model for studying the regulation of glucagon-like peptide-1 secretion. *Endocrinology* 142: 4522–4528.
- Robinson JT, Thorvaldsdóttir H, Winckler W, Guttman M, Lander ES, Getz G, Mesirov JP. 2011. Integrative genomics viewer. *Nat Biotechnol* 29: 24–26.
- Roy P, Chetty R. 2010. Goblet cell carcinoid tumors of the appendix: an overview. *World J Gastrointest Oncol* 2: 251–258.
- Scardoni M, Vittoria E, Volante M, Rusev B, Bersani S, Mafficini A, Gottardi M, Giandomenico V, Malleo G, Butturini G, et al. 2014. Mixed adenoneuroendocrine carcinomas of the gastrointestinal tract: targeted next-generation sequencing suggests a monoclonal origin of the two components. *Neuroendocrinology* 100: 310–316.
- Shoji H, Yamada Y, Okita N, Takashima A, Honma Y, Iwasa S, Kato K, Hamaguchi T, Shimada Y. 2015. Amplification of FGFR2 gene in patients with advanced gastric cancer receiving chemotherapy: prevalence and prognostic significance. *Anticancer Res* 35: 5055–5061.
- Siegel RL, Miller KD, Jemal A. 2016. Cancer statistics, 2016. *CA Cancer J Clin* 66: 7–30.
- Sorscher SM. 2011. Marked response to single agent trastuzumab in a patient with metastatic HER-2 gene amplified rectal cancer. *Cancer Invest* 29: 456–459.
- Stancu M, Wu TT, Wallace C, Houlihan PS, Hamilton SR, Rashid A. 2003. Genetic alterations in goblet cell carcinoids of the vermiform appendix and comparison with gastrointestinal carcinoid tumors. *Mod Pathol* 16: 1189–1198.
- Su X, Zhan P, Gavine PR, Morgan S, Womack C, Ni X, Shen D, Bang YJ, Im SA, Ho Kim W, et al. 2014. FGFR2 amplification has prognostic significance in gastric cancer: results from a large international multicentre study. *Br J Cancer* 110: 967–975.
- Talevich E, Shain AH, Botton T, Bastian BC. 2014. CNVkit: Copy number detection and visualization for targeted sequencing using off-target reads. *bioRxiv* doi: 10.1101/010876.
- Talevich E, Shain AH, Botton T, Bastian BC. 2016. CNVkit: genome-wide copy number detection and visualization from targeted DNA sequencing. *PLOS Computational Biology* 12: e1004873.
- Turner N, Lambros MB, Horlings HM, Pearson A, Sharpe R, Natrajan R, Geyer FC, van Kouwenhove M, Kreike B, Mackay A, et al. 2010. Integrative molecular profiling of triple negative breast cancers identifies amplicon drivers and potential therapeutic targets. *Oncogene* 29: 2013–2023.
- Vanacker L, Smeets D, Hoorens A, Teugels E, Algaba R, Dehou MF, De Becker A, Lambrechts D, De Greve J. 2014. Mixed adenoneuroendocrine carcinoma of the colon: molecular pathogenesis and treatment. *Anticancer Res* 34: 5517–5521.
- Vogel CL, Cobleigh MA, Tripathy D, Gutheil JC, Harris LN, Fehrenbacher L, Slamon DJ, Murphy M, Novotny WF, Burchmore M, et al. 2002. Efficacy and safety of trastuzumab as a single agent in first-line treatment of HER2-overexpressing metastatic breast cancer. *J Clin Oncol* 20: 719–726.
- Wang H, Liang L, Fang JY, Xu J. 2015. Somatic gene copy number alterations in colorectal cancer: new quest for cancer drivers and biomarkers. *Oncogene* 35: 2011–2019.
- Xie L, Su X, Zhang L, Yin X, Tang L, Zhang X, Xu Y, Gao Z, Liu K, Zhou M, et al. 2013. FGFR2 gene amplification in gastric cancer predicts sensitivity to the selective FGFR inhibitor AZD4547. *Clin Cancer Res* 19: 2572–2583.
- Zhao S, Bellone S, Lopez S, Thakral D, Schwab C, English DP, Black J, Cocco E, Choi J, Zammataro L, et al. 2016. Mutational landscape of uterine and ovarian carcinosarcomas implicates histone genes in epithelial–mesenchymal transition. *Proc Natl Acad Sci* 113: 12238–12243.



***FGFR2* amplification in colorectal adenocarcinoma**

Jamal H. Carter, Catherine E. Cottrell, Samantha N. McNulty, et al.

Cold Spring Harb Mol Case Stud 2017, **3**: a001495 originally published online August 23, 2017
Access the most recent version at doi:[10.1101/mcs.a001495](https://doi.org/10.1101/mcs.a001495)

Supplementary Material <http://molecularcasestudies.cshlp.org/content/suppl/2017/08/23/mcs.a001495.DC1>

References This article cites 37 articles, 9 of which can be accessed free at:
<http://molecularcasestudies.cshlp.org/content/3/6/a001495.full.html#ref-list-1>

License This article is distributed under the terms of the Creative Commons Attribution License, which permits unrestricted reuse and redistribution provided that the original author and source are credited.

Email Alerting Service Receive free email alerts when new articles cite this article - sign up in the box at the top right corner of the article or [click here](#).
