

2018

Distinct roles for REV-ERB α and REV-ERB β in oxidative capacity and mitochondrial biogenesis in skeletal muscle

Ariadna Amador
The Scripps Research Institute

Sean Campbell
The Scripps Research Institute

Melissa Kazantzis
The Scripps Research Institute

Gary Lan
The Scripps Research Institute

Thomas P. Burris
Washington University School of Medicine in St. Louis

See next page for additional authors

Follow this and additional works at: https://digitalcommons.wustl.edu/open_access_pubs

Recommended Citation

Amador, Ariadna; Campbell, Sean; Kazantzis, Melissa; Lan, Gary; Burris, Thomas P.; and Solt, Laura A., "Distinct roles for REV-ERB α and REV-ERB β in oxidative capacity and mitochondrial biogenesis in skeletal muscle." *PLoS One*.13,5. e0196787. (2018).
https://digitalcommons.wustl.edu/open_access_pubs/6933

Authors

Ariadna Amador, Sean Campbell, Melissa Kazantzis, Gary Lan, Thomas P. Burris, and Laura A. Solt

RESEARCH ARTICLE

Distinct roles for REV-ERB α and REV-ERB β in oxidative capacity and mitochondrial biogenesis in skeletal muscle

Ariadna Amador^{1[¶]a}, Sean Campbell², Melissa Kazantzis³, Gary Lan², Thomas P. Burris^{4[¶]b}, Laura A. Solt^{2,5*}

1 Kellogg School of Science and Technology, The Scripps Research Institute, Jupiter, Florida, United States of America, **2** Department of Immunology and Microbiology, The Scripps Research Institute, Jupiter, Florida, United States of America, **3** Metabolic Core, The Scripps Research Institute, Jupiter, Florida, United States of America, **4** Department of Pharmacology and Physiology, Saint Louis University School of Medicine, St. Louis, Missouri, United States of America, **5** Department of Molecular Medicine, The Scripps Research Institute, Jupiter, Florida, United States of America

[¶]a Current address: Institute for Genomic Medicine, Columbia University Medical Center, New York, NY, United States of America

[¶]b Current address: Center for Clinical Pharmacology, Washington University School of Medicine and St. Louis College of Pharmacy, St. Louis, Missouri, United States of America

* lsolt@scripps.edu



OPEN ACCESS

Citation: Amador A, Campbell S, Kazantzis M, Lan G, Burris TP, Solt LA (2018) Distinct roles for REV-ERB α and REV-ERB β in oxidative capacity and mitochondrial biogenesis in skeletal muscle. PLoS ONE 13(5): e0196787. <https://doi.org/10.1371/journal.pone.0196787>

Editor: Nicholas Simon Foulkes, Karlsruhe Institute of Technology, GERMANY

Received: November 9, 2017

Accepted: April 19, 2018

Published: May 3, 2018

Copyright: © 2018 Amador et al. This is an open access article distributed under the terms of the [Creative Commons Attribution License](https://creativecommons.org/licenses/by/4.0/), which permits unrestricted use, distribution, and reproduction in any medium, provided the original author and source are credited.

Data Availability Statement: All relevant data are within the paper and its Supporting Information files.

Funding: This work was supported by grants from the National Institute of Allergy and Infectious Diseases (R01AI116885, L.A.S) and the National Institute of Mental Health (R01MH093429, T.P.B). The funders had no role in study design, data collection and analysis, decision to publish, or preparation of the manuscript.

Abstract

The nuclear receptors REV-ERB α and REV-ERB β have been demonstrated to be core members of the circadian clock and participate in the regulation of a diverse set of metabolic functions. Due to their overlapping tissue expression patterns and gene expression profiles, REV-ERB β is thought to be redundant to REV-ERB α . Recent work has highlighted REV-ERB α 's role in the regulation of skeletal muscle oxidative capacity and mitochondrial biogenesis. Considering the similarity between the REV-ERBs and the hypothesized overlap in function, we sought to determine whether REV-ERB β -deficiency presented with a similar skeletal muscle phenotype as REV-ERB α -deficiency. Ectopic overexpression in C2C12 cells demonstrated that REV-ERB β drives mitochondrial biogenesis and the expression of genes involved in fatty acid oxidation. Intriguingly, knock down of REV-ERB β in C2C12 cultures also resulted in mitochondrial biogenesis and increased expression of genes involved in fatty acid β -oxidation. To determine whether these effects occurred *in vivo*, we examined REV-ERB β -deficient mice and observed a similar increase in expression of genes involved in mitochondrial biogenesis and fatty acid β -oxidation. Consistent with these results, REV-ERB β -deficient mice exhibited an altered metabolic phenotype compared to wild-type littermate controls when measured by indirect calorimetry. This likely compensated for the increased food consumption that occurred, possibly aiding in the maintenance of their weight over time. Since feeding behaviors are a direct circadian output, this study suggests that REV-ERB β may have more subtle effects on circadian behaviors than originally identified. Furthermore, these data implicate REV-ERB β in the control of skeletal muscle metabolism and energy expenditure and suggest that development of REV-ERB α versus REV-ERB β selective ligands may have therapeutic utility in the treatment of metabolic syndrome.

Competing interests: The authors have declared that no competing interests exist.

Introduction

In order to maintain homeostasis and promote survival, the circadian clock coordinates and maintains the 24-hour rhythmicity of various physiological processes, the most evident are the sleep/wake and fasting/feeding cycles [1, 2]. Disruption of the clock has been associated with an increased susceptibility and/or development of sleep and metabolic disorders [1, 2]. Proper circadian function occurs in response to synchronous expression of the molecular machinery of the circadian clock, composed of a central pacemaker in the suprachiasmatic nucleus (SCN) residing in the hypothalamus. While the master clock is entrained by light, almost all cells in the body harbor peripheral clocks that are entrained by both signals from the master clock and environmental cues [3]. This molecular machinery is comprised of core clock proteins that control each other's expression and function in a transcriptional/translation feedback loop; two transcriptional activators, BMAL1 and CLOCK, heterodimerize and drive the expression of *Cryptochrome* (*Cry1, 2*) and *Period* (*Per1-3*) [4]. Once Cryptochrome and Period proteins reach a critical threshold, PER:CRY complexes translocate to the nucleus to repress *Bmal1*: *Clock* transactivation [4]. In addition to these core clock components, the nuclear receptors (NR) RORs (α , β , and γ) and the REV-ERBs (α and β) compete to activate and repress, respectively, the transcription of *Bmal1* and *Clock* genes, completing an integral accessory loop which helps maintain circadian rhythmicity [5–7].

The REV-ERBs also participate in the regulation of a diverse set of metabolic processes, thus linking control of our daily rhythms with maintenance of metabolic homeostasis [8]. Both REV-ERBs are ubiquitously expressed with very high expression patterns in the liver, adipose tissue, skeletal muscle, and brain, with both NRs exhibiting circadian patterns of expression [9–11]. The REV-ERBs are unique within the NR superfamily in that they lack the carboxy-terminal tail of the ligand binding domain (LBD called activation function 2 (AF-2, helix 12), which is required for coactivator recognition. As a result, both REV-ERBs are transcriptional repressors, recruiting corepressors such as NCoR in a ligand-dependent fashion. Both REV-ERBs bind to identical DNA response elements (termed RORE/RevREs) either as monomers to an AGGTCA “half site” with a 5' AT-rich extension, or as homodimers to a DR2 element [direct repeat (DR) AGGTCA sequence with a 2 base pair spacer] [12, 13]. The retinoic acid receptor-related orphan receptors [RORs (α , β , and γ)] recognize the same DNA response element and are often coexpressed in the same tissues as the REV-ERBs [14]. Due to the limited availability of genetic models to explore REV-ERB β 's function, significantly more is known about REV-ERB α 's role in mammalian physiology. As a consequence, REV-ERB β is considered functionally redundant to REV-ERB α and its role has, by default, been considered almost identical to REV-ERB α 's.

Recent work has demonstrated that REV-ERB α is highly expressed in oxidative skeletal muscle and plays an integral role in mitochondrial biogenesis and oxidative function [15]. Skeletal muscle accounts for ~40% of body mass, more than 85% of total insulin-stimulated glucose uptake, and is one of the most metabolically demanding major mass peripheral tissues [16, 17]. Consequently, skeletal muscle has a significant role in insulin sensitivity and the development of obesity. Due to REV-ERB α 's role in skeletal muscle, REV-ERB α -deficient mice display changes in daily energy expenditure, pre-disposing them to diet induce obesity [18]. Work performed by Ramakrishnan and colleagues also demonstrated that REV-ERB β was highly expressed in skeletal muscle, regulating genes involved in fatty acid and lipid absorption [17]. Importantly, data presented by Ramakrishnan and colleagues implicated REV-ERB β in the control of lipid and energy homeostasis in skeletal muscle [17].

Given the overt skeletal muscle phenotype observed in REV-ERB α -deficient mice, coupled with their metabolic abnormalities and the general view held by some in the field that

REV-ERB β is functionally redundant to REV-ERB α , we sought to determine the extent of functional redundancy of REV-ERB β to REV-ERB α in skeletal muscle and metabolism [19, 20]. Loss of REV-ERB β resulted in increased mitochondrial biogenesis and genes involved in muscle metabolism both *in vitro* and *in vivo*. Characterization of REV-ERB β -deficient mice demonstrated a metabolic profile opposite to that of REV-ERB α -deficient animals, including failure to gain weight despite increased food consumption during the day. This increased food consumption correlated with increased utilization of carbohydrates for energy as well as increased energy expenditure during the day. These data indicate that, at least in terms of muscle, REV-ERB β is not functionally redundant to REV-ERB α , instead playing a distinct role in the regulation of skeletal muscle metabolism. Furthermore, these data suggest development of dissociated REV-ERB modulators (REV-ERB α -specific versus REV-ERB β -specific) may be beneficial for the treatment of metabolic syndrome.

Materials and methods

Animals

The following mouse strains used were either purchased from the Jackson Laboratory and/or were bred at the Scripps Research Institute–Florida (Scripps Florida). Male B6.Cg-Nr1d1^{tm1Ven/Laz}, stock # 018447 (REV-ERB α ^{-/-}) [21]; Male and female REV-ERB β KO mice were generated as previously described [22]. Wild-type (WT) littermates were used as controls for both knock out strains. This study was carried out in accordance with the recommendations in the *Guide for the Care and Use of Laboratory Animals* of the National Institutes of Health. Animal care and experimental protocols used in this study were approved by the Scripps Florida Institutional Animal Care and Use Committee (Assurance number: D16-00726). Mice were housed in groups of 3–5 in 12 h light/12 h dark cycles at 23°C and fed standard chow (Harlan 2920X), unless otherwise stated. Mice had access to chow and water *ad libitum*. Mice were sacrificed by CO₂ asphyxiation for tissue processing.

Food intake

Food intake was monitored in normal chow-fed mice using the BioDAQ system (Research Diets) following vendor recommended procedures. The feeding patterns of pre-acclimatized, individually housed mice were continuously recorded for 3 consecutive days. The daily number of bouts, percent of time spent in bouts and total chow consumed were obtained. A bout constitutes a visit or set of visits (no more than 5 seconds apart) to the food hoppers. Each bout has a duration and amount of food obtained during it. Data represent the average day or night intake. Average values are compared by 2-tailed Student's *t* test to determine significance.

CLAMS

Mice were individually placed and acclimatized in a Comprehensive Laboratory Monitoring System (CLAMS; Columbus Instruments) at 23°C for 48 h. Afterwards, VO₂, VCO₂, food intake, and spontaneous locomotor activity were measured for the indicated time periods. Respiratory exchange ratio (RER) and energy expenditure (EE) were calculated using the following equations: RER = VCO₂/VO₂; EE (kcal/h) = (3.815 + 1.232 X RER) x VO₂. EE was normalized by lean body mass. Both raw and average values for RER are presented.

Body composition studies

Total, fat, lean, and fluid mass of mice was measured by Nuclear Magnetic Resonance using the Minispec LF-NMR (Brucker Optics) analyzer.

Viral production, cell culture, and infection

To generate murine REV-ERB α or REV-ERB β retroviral vectors, mouse REV-ERB sequences were inserted into the MIGR1 vector (Addgene) using the XhoI site and further screened for orientation. MIGR1 empty vector was used as a control. MIGR1 was a gift from Warren Pear (Addgene, plasmid # 27490)[23]. To knock down REV-ERB β expression, 3 different shRNAmirs (TransOmic Technologies, Inc.) were inserted, individually into the pLMPd-Ametrine vector[24]. The shRNAmirs used were top-scoring designs from shERWOOD analysis (TransOmic Technologies, Inc.). Each shRNAmir insert was PCR amplified using primers specific for common regions in the flanking miR-30 sequences, which included XhoI and EcoRI sites. pLMPd-Ametrine containing a CD8 shRNA was used as a control.

Plat-E cells (Cell Biolabs, Inc.) were cultured in DMEM containing 10% fetal bovine serum, 2mM L-glutamine, and 1% penicillin/streptomycin at 37°C under standard culture conditions. Plat-E cells were seeded at 350,000 cells per mL in a 10cm dish the day before transfection. 5 μ g total plasmid DNA was transfected via Fugene6 reagent (Promega) according to manufacturer's protocol. Viral supernatant was harvested 48 and 72 hours post transfection and stored at -80.

C2C12 myoblasts were obtained from ATCC (Manassas, VA) and grown in Dulbecco modified Eagle's medium (DMEM; 4.5 g/l D-Glucose; Gibco) supplemented with 10% fetal bovine serum, 2mM L-glutamine, and 1% penicillin (50units/mL)/streptomycin (50ug/mL). Prior to myogenic differentiation, C2C12s were plated at 30,000 cells/mL in 24 well plates and left to adhere overnight. The following day, cells were washed once with PBS and incubated overnight in 1mL total of 50% retrovirus conditioned media and 50% normal culture media containing Polybrene (8ug/mL, Santa Cruz Biotech). 24 hours later, retrovirus was removed and replaced with normal growth media for another 24 hours before myogenic differentiation was induced. One transduction was sufficient to obtain >90% GFP/Ametrine-positive cells. Myogenic differentiation into myotubes was induced after cells reached confluency by adding DMEM supplemented with 2% horse serum (HS), 2mM L-glutamine, and 1% penicillin/streptomycin at 37°C in a humidified incubator under 5% CO₂ for 6 days. Overexpression and knock down was verified by qPCR analysis.

MitoTracker and flow cytometry

Retrovirally transduced C2C12 cells were washed with PBS, trypsinized and incubated at 37°C for 20 min with 100nM MitoTracker Red^{FM} dyes (Molecular Probes). MitoTracker Red probe is a red-fluorescent dye that stains mitochondria in living cells and its accumulation is dependent upon membrane potential (Molecular Probes). To measure viability in the samples, a Fixable Viability Dye (Invitrogen/Thermo Fisher) was added to the cultures during the Mitotracker staining step. This dye can be used to stain both live and fixed cells to irreversibly label dead cells prior to analysis. Samples were washed three times in PBS and flow cytometric analysis was performed on a BD LSRII (BD Biosciences) instrument and analyzed using FlowJo software (TreeStar).

mtDNA quantification

Mitochondrial content was measured using methods previously described[25]. Briefly, genomic DNA was extracted using the Blood & Cell culture DNA Mini Kit (Qiagen) per manufacturer's instructions from C2C12 samples. DNA was quantified via a standard curve method in order to dilute all samples to 3ng/ul in TE buffer. Once normalized for concentration, samples were subject to RT-qPCR using a cocktail of SYBR green PCR master mix, template DNA, and mtDNA target specific primer pairs, plus H₂O. Each sample was run in triplicate and data

were averaged. This step was repeated in separate wells using nuclear DNA specific primers and the ratio between mtDNA and nuclear DNA was quantified. Dissociation curves were calculated for all samples to ensure the presence of a single PCR product.

RNA isolation and quantitative real-time polymerase chain reaction (qRT-PCR)

Muscle was harvested from WT and REV-ERB β KO mice after a 5 hour fast, at ZT6 (Zeitgeber 6–6 hours into the murine nocturnal period). Total RNA was isolated from tissues by guanidinium thiocyanate/phenol/chloroform extraction[15]. RNA concentrations were adjusted in order to load 500ng of RNA per cDNA reaction. Total RNA was isolated from C2C12 cells using a Quick-RNA MicroPrep kit (Zymo Research) using the manufacturers protocol. RNA concentrations were adjusted in order to load 1 μ g of RNA per cDNA reaction. cDNA was synthesized using qScriptTM cDNA SuperMix synthesis kit (Quanta Biosciences). Quantification of each transcript by quantitative real time-polymerase chain reaction (qRT-PCR) was performed using SYBR Green dye (Quanta Biosciences) to detect dsDNA synthesis, and analyzed using cycling threshold (Ct) values. Relative expression was determined using the $\Delta\Delta$ CT method and normalized to the housekeeping gene 18s. Quantitative RT-PCR was performed with a 7900HT Fast Real Time PCR System (Applied Biosystems) using SYBR Green (Roche) as previously described. Primers were designed using Primer3 (primer3.sourceforge.net). Specificity and validation of the primers were determined using an *In silico* PCR software program (genome.ucsd.edu) and melting curve analysis to eliminate the possibility of primer-dimer artifacts and check reaction specificity. Primer sequences can be found in [Table 1](#).

Statistical analysis

All data are expressed as mean \pm S.E.M. Statistical analysis was performed using GraphPad Prism6 software. For multiple comparisons, two-way ANOVA was performed. Post-test analysis (ANOVA) was performed correcting for multiple comparisons using the Sidak-Bonferroni method. For all other independent data sets, since the data analyzed were not random, statistical significance was determined using two-tailed unpaired Student's *t*-tests with no correction for multiple comparisons[26]. ANCOVA analysis was performed using SPSS Statistics (IBM). (N per group per study is indicated in each figure legend). Significance was assessed as follows: * p <0.05, ** p <0.01, *** p <0.005, **** p <0.001.

Results

Overexpression of the REV-ERBs drives mitochondrial biogenesis

We previously demonstrated that REV-ERB α was a critical regulator of muscle mitochondrial biogenesis[15]. To determine the cell autonomous role of REV-ERB β versus REV-ERB α , we utilized the C2C12 cell line, a well-studied cell culture model commonly used to investigate myogenesis[27–30]. We retrovirally overexpressed REV-ERB α , REV-ERB β , or empty vector retrovirus in proliferating C2C12 myoblasts two days prior to the induction of differentiation ([Fig 1A](#)). MitoTracker Red staining, indicative of functional mitochondria, revealed that overexpression of both REV-ERBs enhanced mitochondrial biogenesis, demonstrated by increased fluorescence in the REV-ERB overexpressing cells relative to empty vector control. Compared to undifferentiated cells (Day 0; D0), the cells had differentiated and acquired a muscle specific phenotype by Day 6 (D6). Very little difference was observed in expression of *Myogenin* (*Myog*), Troponin I slow (*Tnni1*) and Troponin I fast (*Tnni2*), at Day 6 (D6) between groups [17] ([Fig 1B](#)). No overt viability issues were observed by day 6. ([S1A and S1B Fig](#))

Table 1. List of qRT-PCR primers used in the study.

Gene name	Forward primer (5' - 3')	Reverse primer (5' - 3')
<i>18s</i>	GTAACCCGTTGAACCCCAT	CCATCCAATCGGTAGTAGCG
<i>Acaal</i>	ATCTTTTCCCTCGGAGCATGA	TTTCTCTGCGATGTTGATGC
<i>Acaas</i>	TGACTTTGCCGAGAAGGAGT	ACTCAGCTCCTCTGGCACAT
<i>Arntl</i>	CAGGCTAGCTTGATAGGACAGA	CCAGTGTAGGGGTGACTGTAAAC
<i>Cd36</i>	GCGACATGATTAATGGCACA	CCTGCAAAATGTCAGAGGAAA
<i>Clock</i>	AGAACTTGGCATTGAAGAGTCTC	GTCAGACCCAGAATCTTGGCT
<i>Cpt1b</i>	TGCTTACCTCCGAAGCAGGA	GCTGCTTGCACATTTGTGTT
<i>Cry1</i>	CACTGGTTCCGAAAGGGACTC	CTGAAGCAAAAATCGCCACCT
<i>Cry2</i>	CACTGGTTCCGAAAGGACTA	CCACGGGTGAGGATGTAGA
<i>Fasn</i>	GCACAGCTCTGCACTGTCTACTAC	ATCCCAGAGGAAGTCAGATGATAG
<i>Il6</i>	CATGTTCTCTGGAAATCGTG	TCCAGTTGGTAGCATCCATC
<i>Lpl</i>	ATCAACTGGATGGAGGAGGAGT	TTCTTATTGGTCAGACTTCTGTCT
<i>Myh1</i>	AAGCTTCAAGTTTGGACCCACGGT	TCGGCGTCGGAACATGCGC
<i>Myh2</i>	CGAGGCTGACTCGTCTCTGCT	GGGGCAGCTCCCCGAAAAC
<i>Myh4</i>	CCAGGCTGCGGAGGCAATCA	TGCTCGGCCACTCTCTGCT
<i>Myog</i>	CCTTAAAGCAGAGAGCATCC	GGAATTCGAGGCATAATATGA
<i>Nr1d1</i>	ACCTTTGAGGTGCTGATGGT	CTCGCTGAAGTCAAACATGG
<i>mt-Co1</i>	ACTATACTACTAACAGACCG	GGTCTTTTTTTTCCGGAGTA
<i>mt-Co2</i>	AACCATAGGGCACCAATGATAC	GGATGGCATCAGTTTTAAGTCC
<i>mt-Nd1</i>	GTTGGTCCATACGGCATTTF	TGGGTGTGGTATTGGTAGGG
<i>Nr1d2</i>	TGTGAAAACAGGCAAAACCA	CCCTTACAGCCTTACACAAGC
<i>Per1</i>	CGGATTGTCTATATTCGGAGCA	TGGGCAGTCGAGATGGTGTA
<i>Per2</i>	AGCGCAAGGTCGAGTTAG	GCTGCAACTGGAAATATGAAGC
<i>Per3</i>	AACACGAAGACCGAAACAGAAAT	CTCGGCTGGGAAATACTTTTTCA
<i>Ppargc1a</i>	GGAGCTCCAAGACTCTAGACA	CCAAAGTCTCTCTCAGGTAGC
<i>Rora</i>	AACCCGAACCCATATGTGAC	ATGTTCTGGGCAAGGTGTTT
<i>Scd1</i>	GGAGACCCCTTAGATCGAGTG	CACTCGAATTACTTCCCACCA
<i>Srebf1</i>	AACCTCATCCGCCACCTGCT	CACTGGCACGGGCATCCTTC
<i>Tpm3</i>	GTCCCGTTGCCGAGAGATGGA	CAGCACGGGTCTCTGCCTCC
<i>Tnmi1</i>	GCCTATGCGCACACCTTTG	CGGGTACCATAAGCCCACACT
<i>Tnmi2</i>	AAATGTTGAGTCTGAGTCTTAAGT	GCCAAGTACTCCCAGACTGGAT
<i>Ucp2</i>	GGCTGGTGGTGGTCCGAGAT	CCGAAGGCAGAAGTGAAGTG
<i>Ucp3</i>	ACCTGGACTGCATGGTAAGG	GAGAGCAGGAGGAAGTGTGG

<https://doi.org/10.1371/journal.pone.0196787.t001>

Overexpression of both REV-ERBs also resulted in increased mitochondrial content, indicated by the increased expression of mitochondrial NADH dehydrogenase I (*mt-Nd1*), Cytochrome c oxidase I (*mt-Co1*), and Cytochrome c oxidase II (*mt-Co2*), compared to empty vector control cells (Fig 1C). These data suggest that the REV-ERBs can drive mitochondrial biogenesis *in vitro*.

Overexpression of the REV-ERBs regulates the molecular clock and mitochondrial metabolism genes

The REV-ERBs have been demonstrated to be core members of the circadian clock and participate in the regulation of a diverse set of metabolic processes, thus linking control of our daily rhythms with maintenance of metabolic homeostasis[8]. Given the changes in mitochondrial content observed in the REV-ERB overexpressing cells, we next wanted to determine how

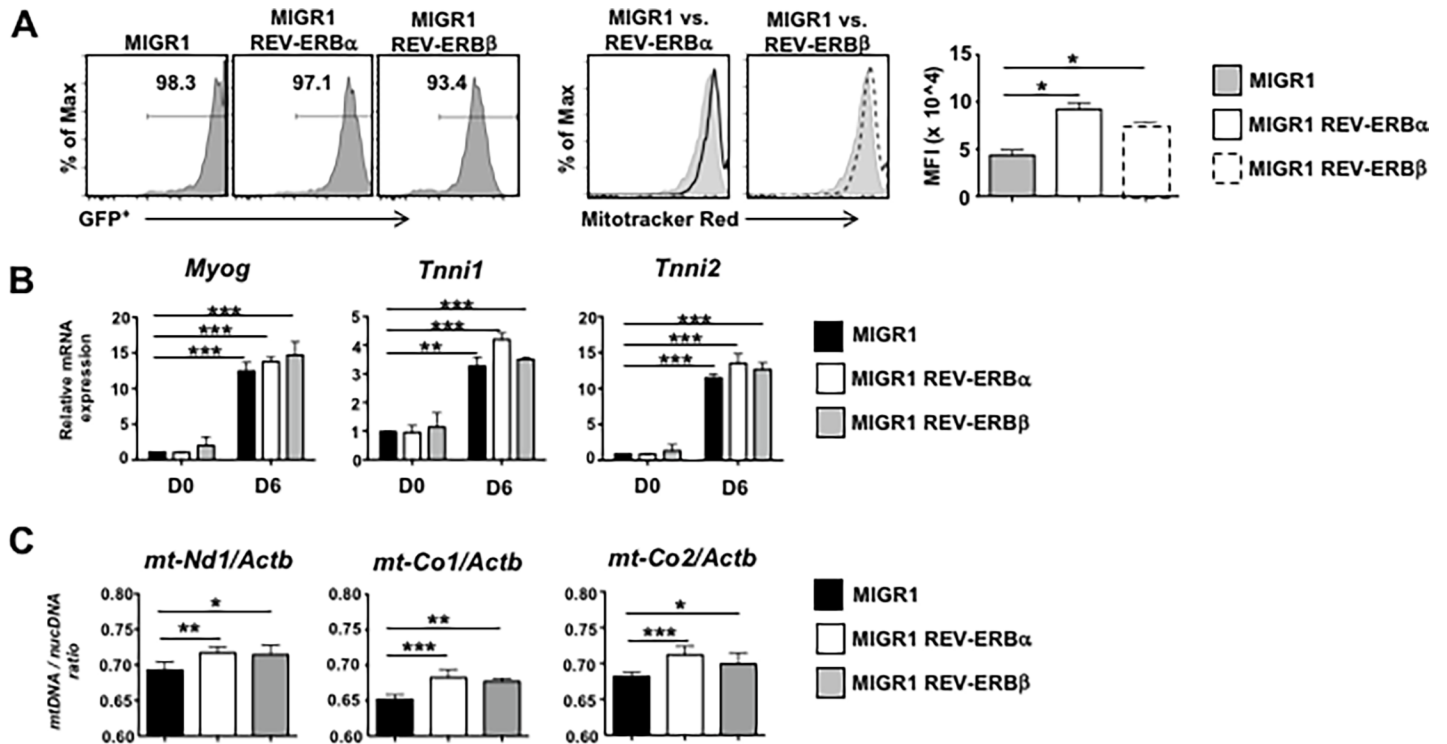


Fig 1. The REV-ERBs modulate mitochondrial content *in vitro*. (A) Mitochondrial biogenesis determined by flow cytometry (FACS) using MitoTracker Red staining in empty vector, REV-ERB α , and REV-ERB β overexpressing C2C12s. FACS panels (left) indicate percent of cells retrovirally transduced. FACS panels (middle) demonstrate overexpression of the REV-ERBs enhances MitoTracker Red staining. Graph (right) depicts median fluorescent intensity (MFI). (n = 3 per condition) (B) qRT-PCR analysis of genes demonstrating cells had terminally differentiated. (C) Mitochondrial DNA (mtDNA) content demonstrated by the ratio of mtDNA to nuclear DNA (nucDNA) in empty vector, REV-ERB α , and REV-ERB β overexpressing C2C12s. nucDNA was measured using β -actin (*Actb*) primers. (n = 3 per condition) Values are mean \pm s.e.m. Data are representative of 4 independent experiments (Panels A & B) or 2 independent experiments (Panel C) demonstrating similar results. Statistical significance was assessed using Student's two-tailed *t*-tests. **p* < 0.05, ***p* < 0.01, ****p* < 0.001.

<https://doi.org/10.1371/journal.pone.0196787.g001>

expression of the clock genes correlated with expression of genes involved in mitochondrial function. Overexpression of REV-ERB α (gene name *Nr1d1*) significantly repressed almost all molecular clock genes, including REV-ERB β (*Nr1d2*), *Bmal1* (*Arntl*), *Clock*, the Cryptochromes (*Cry1*, *Cry2*), and the Period genes (*Per1*, *Per2*, *Per3*), which is consistent with its role as a transcriptional repressor (Fig 2A). Overexpression of REV-ERB α also repressed expression of *Cd36*, a gene which is involved in lipid uptake [31]. In contrast, ROR α and PGC1 α (*Pparg1a*), the master regulator of mitochondrial biogenesis were upregulated with REV-ERB α overexpression. Additionally, genes encoding enzymes of fatty acid β -oxidation, notably carnitine palmitoyltransferase 1b (*Cpt1b*), long chain acyl-CoA dehydrogenase (*Acadl*), short chain acyl-CoA dehydrogenase (*Acads*), *Ucp2*, and *Ucp3*, genes involved in skeletal muscle metabolism, were also upregulated with REV-ERB α overexpression, consistent with previously published work (Fig 2A) [15, 32]. REV-ERB α also repressed expression of *Sterol regulatory element binding-protein 1* (*Sreb1*), *Stearoyl-CoA desaturase-1* (*Scd1*), *Fatty acid synthase* (*Fasn*), genes involved in lipogenesis, and *Il6*, a pleiotropic muscle myokine that has been shown to be involved in muscle growth, myogenesis, and regulation of energy metabolism (S1C Fig) [33]. Overexpression of REV-ERB β had similar effects on circadian clock and mitochondrial metabolism genes, with the exception that it potently repressed REV-ERB α expression (Fig 2B). The negative regulation of REV-ERB α on REV-ERB β expression and vice-versa is consistent their ability to negatively regulate their own expression through conserved ROREs/RevREs in their promoter regions [34, 35]. Interestingly, and in contrast to

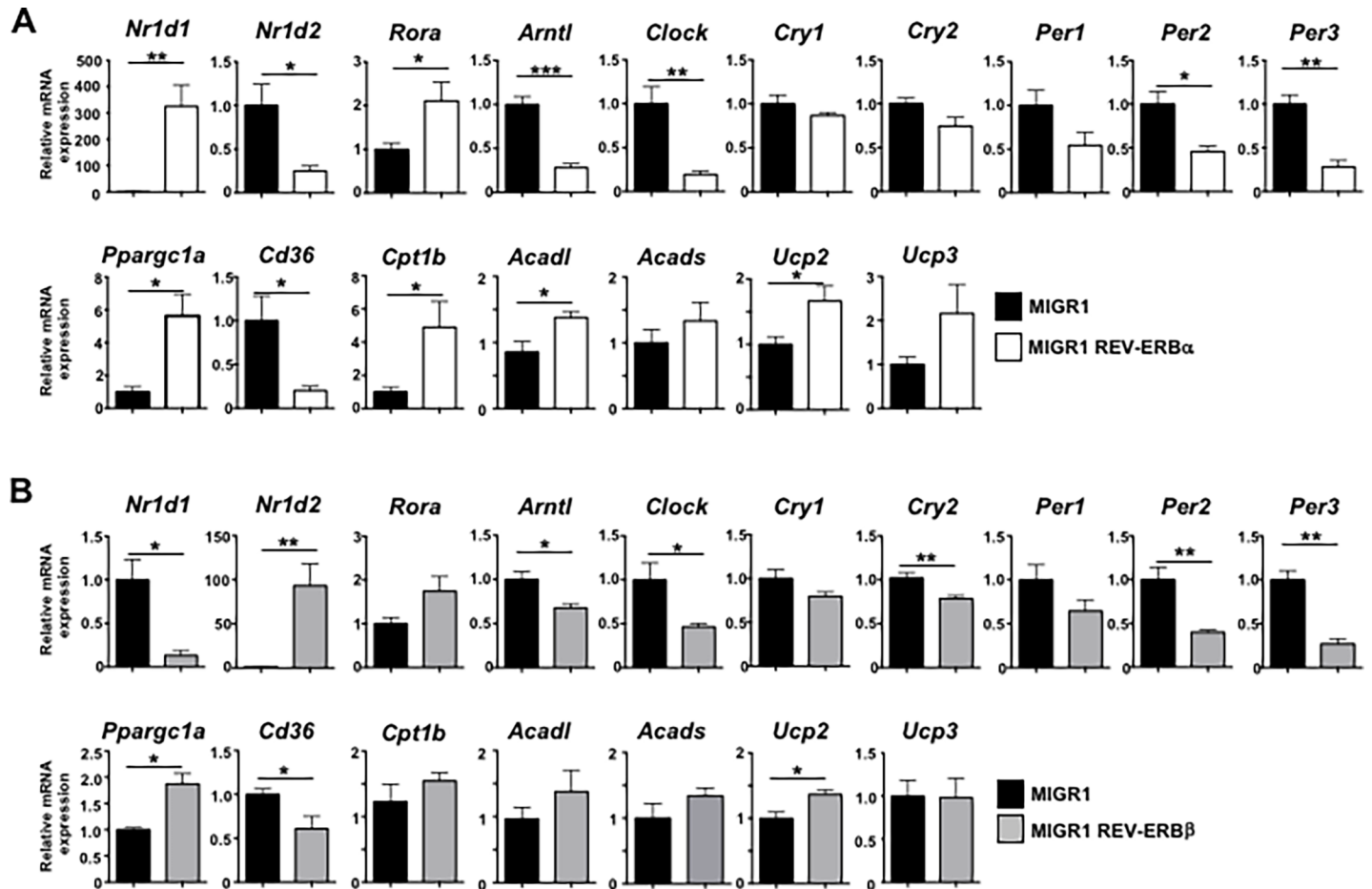


Fig 2. The REV-ERBs modulate circadian and mitochondrial metabolic gene expression *in vitro*. (A) qRT-PCR analysis demonstrating that overexpression of REV-ERB α largely represses expression of the molecular clock genes while driving expression of genes involved in mitochondrial metabolism, fatty acid uptake, and fatty acid β -oxidation. (B) qRT-PCR analysis demonstrating that overexpression of REV-ERB β represses expression of the molecular clock genes while driving expression of genes involved in mitochondrial metabolism, fatty acid uptake, and fatty acid β -oxidation. *18s* was used as the internal control. Values are mean \pm s.e.m. Data are representative of 4 independent experiments demonstrating similar results. Statistical significance was assessed using Student's two-tailed *t*-tests. **p* < 0.05, ***p* < 0.01.

<https://doi.org/10.1371/journal.pone.0196787.g002>

REV-ERB α overexpression, REV-ERB β overexpression led to increased expression of *Srebfl* and *Fasn*, but had no effects on expression of *Scd1* or *Il6* (S1C Fig). While it appears that REV-ERB β was not as effective as REV-ERB α in the overexpression studies, this could be due to the differences in overexpression levels between the two receptors, with REV-ERB α being more highly expressed than REV-ERB β . Regardless, the increased expression of genes involved in mitochondrial metabolism was consistent with the MitoTracker staining, mitochondrial content, and skeletal muscle metabolism genes. These results demonstrate an inverse relationship between the expression of the core circadian clock genes and the REV-ERBs and indicate that overexpression of REV-ERB α and REV-ERB β can modulate the expression of genes driving fatty acid β -oxidation and lipid metabolism in C2C12 cells. However, under some circumstances, REV-ERB β can not completely fulfill REV-ERB α 's role.

Knock down of REV-ERB β drives mitochondrial biogenesis

Work previously performed assessing REV-ERB β 's function in C2C12s suggested that it plays a significant role in the regulation of skeletal muscle lipid homeostasis. However, this analysis

was performed in C2C12 cells using a dominant negative form of REV-ERB β that lacked the ligand binding domain[17]. Using this approach, Ramakrishnan and colleagues reported that dominant negative REV-ERB β largely repressed genes involved in skeletal muscle energy expenditure and lipid catabolism[17]. These results were in line with data demonstrating that loss of REV-ERB α in skeletal muscle led to decreased mitochondrial content and function[15]. Given the overlap in function observed in our overexpression studies, we hypothesized that loss of REV-ERB β would yield similar results as loss of REV-ERB α . Therefore, to fully assess how loss of REV-ERB β affects myogenesis, we retrovirally overexpressed a REV-ERB β shRNA or a CD8 control shRNA in proliferating C2C12 myoblasts 2 days prior to the induction of differentiation (Fig 3A). Strikingly, knock down of REV-ERB β enhanced mitochondrial biogenesis, indicated by the increased staining with MitoTracker Red. Analysis of *Myog*, *Tnni1*, and *Tnni2* indicated that compared to undifferentiated cells (Day 0, D0), the cells had differentiated and acquired a muscle specific phenotype by Day 6 (D6). No overt viability issues were observed by day 6. (S2A and S2B Fig) Furthermore, loss of REV-ERB β appeared to significantly increase expression of *Tnni2*. (Fig 3B) Knock down of REV-ERB β also increased mitochondrial content, indicated by the increased expression of *mt-Nd1*, *mt-Co1*, and *mt-Co2*, compared to CD8 shRNA control cells. Interestingly, while knock down of REV-ERB β led to increased expression of REV-ERB α and ROR α , it also de-repressed all of the core molecular clock genes. Like overexpression of REV-ERB α , overexpression of ROR α has also been shown to regulate the expression of genes involved in skeletal muscle metabolism[36]. Knock down of REV-ERB β also resulted in increased expression of almost all genes analyzed that were involved in lipid and skeletal muscle metabolism, including *Cd36*, *Cpt1b*, *Acadl*, *Ucp2*, and *Ucp3*, genes involved in skeletal muscle, which was consistent with the MitoTracker staining. No change was observed in *Acads*. However, knock down of REV-ERB β resulted in decreased expression of PGC1 α (*Ppargc1a*), *Srebfl1*, *Fasn*, and *Il6*, but no change was observed in *Scd1* (Fig 3D and S2C Fig). While these results were largely in contrast to previously published work using a dominant negative REV-ERB β construct, these results were at least consistent with the notion that in C2C12 cells, REV-ERB β plays a role in the regulation of muscle metabolism and energy expenditure. Interestingly, these data are in contrast to the overexpression data and show a correlation between the circadian clock and skeletal muscle metabolic gene expression.

Loss of REV-ERB β drives skeletal muscle mitochondrial gene expression *in vivo*

Given the surprising results we observed in C2C12 cells, we next wanted to determine whether loss of REV-ERB β affected skeletal muscle gene expression *in vivo* in a similar manner. Using REV-ERB β -deficient mice[22], we isolated (whole quadriceps) skeletal muscle from wild-type (WT) and REV-ERB β knock out (KO) mice at Zeitgeber 6 (ZT6), 6 hours post lights-on and the time point in which peak REV-ERB mRNA expression occurs[37]. qRT-PCR analysis indicated that, similar to the C2C12 data, loss of REV-ERB β de-repressed most of the core clock genes, including REV-ERB α , ROR α , *Bmal1*, and *Clock*. We observed no effects on *Cry2* or *Per3* (Fig 4A). Similar results were observed in REV-ERB α KO muscle. (Fig 4B) Loss of REV-ERB β also led to increased expression of genes involved in lipid and skeletal muscle metabolism (*Cd36*, *Cpt1b*, *Acadl*, *Acads*) and energy expenditure (*Ucp2*, *Ucp3*) (Fig 4A). However, unlike the C2C12 cells, REV-ERB β KO mice also had increased expression of PGC1 α (*Ppargc1a*). Similar to the C2C12s, REV-ERB β KO mice also exhibited decreased expression of *Srebfl1*, *Fasn*, and *Il6*, with little effect observed on *Scd1*. (S3A Fig) Moreover, loss of REV-ERB β appeared to shift the muscle towards a more oxidative

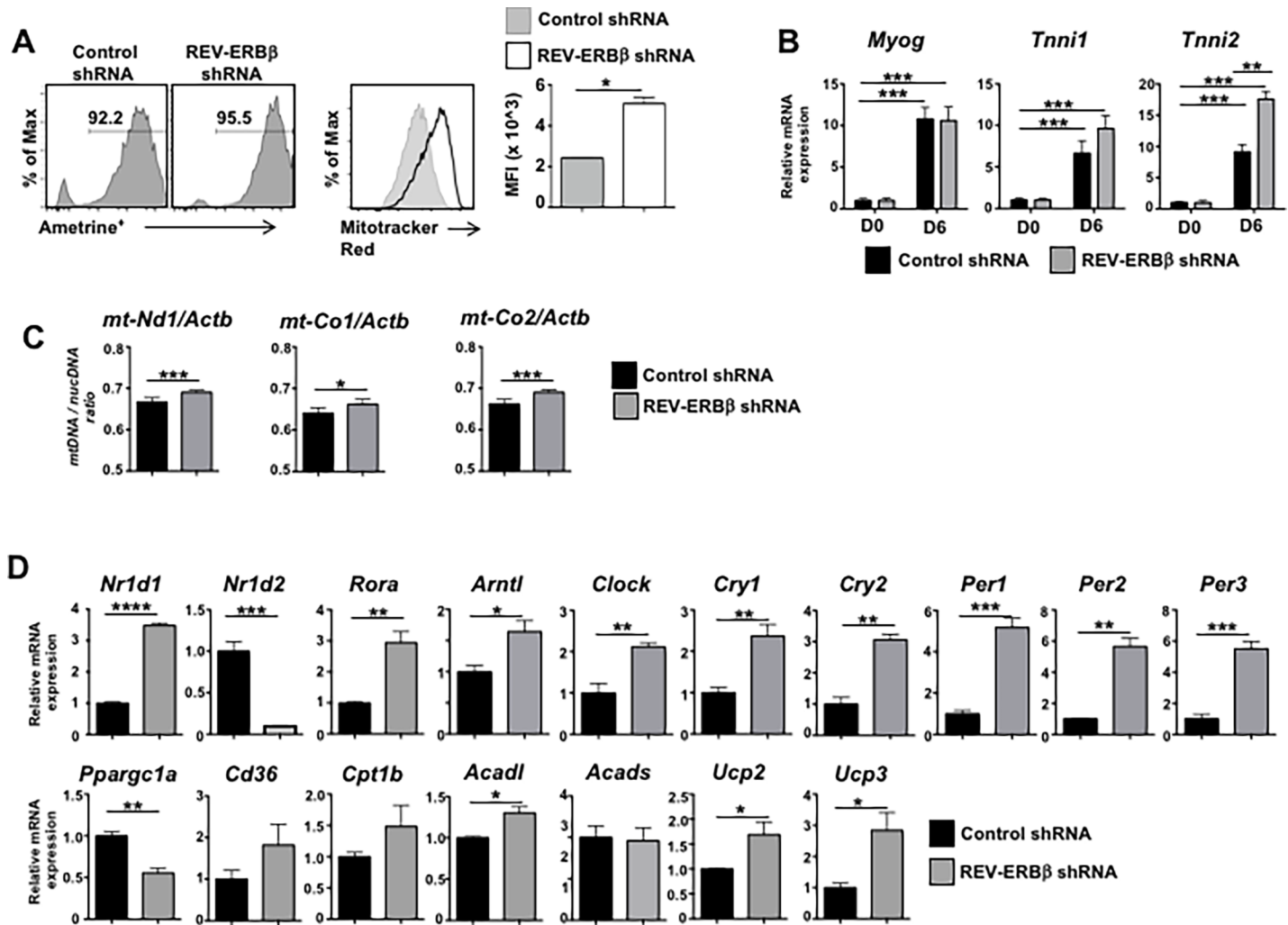


Fig 3. REV-ERBβ knock down drives mitochondrial gene expression in vitro. (A) Mitochondrial biogenesis determined by flow cytometry (FACS) using MitoTracker Red staining in empty vector and REV-ERBβ shRNA overexpressing C2C12s. FACS panels (left) indicate percent of cells retrovirally transduced. FACS panels (middle) demonstrate knock down of REV-ERBβ enhances MitoTracker Red staining. Graph (right) depicts median fluorescent intensity (MFI). (B) qRT-PCR analysis of genes demonstrating cells had terminally differentiated. (C) Mitochondrial DNA (mtDNA) content demonstrated by the ratio of mtDNA to nuclear DNA (nucDNA) in CD8 shRNA versus REV-ERBβ shRNA overexpressing C2C12s. nucDNA was measured using β-actin (*Actb*) primers. (D) qRT-PCR analysis demonstrating the knock down of REV-ERBβ and its effects on RORα, REV-ERBα, and genes encoding proteins involved in fatty acid oxidation and cytokine production. *18s* was used as the internal control. (n = 3 per condition). Values are mean ± s.e.m. Data representative of 4 independent (Panels A, B, D) or two independent (Panel C) experiments demonstrating similar results. Statistical significance was assessed using Student's two-tailed *t*-tests. **p*<0.05, ***p*<0.01, ****p*<0.005, *****p*<0.001.

<https://doi.org/10.1371/journal.pone.0196787.g003>

phenotype as we observed increased expression of tropomyosin 3 (*Tpm3*), a marker of oxidative type 1 fiber and myosin heavy chain IIa (*Myh2*), a myosin heavy chain gene more associated with oxidative fibers than others. The expression of *Myh4*, a marker of type 2b glycolytic fibers, was unaltered (Fig 4A). The shift towards a more oxidative phenotype in REV-ERBβ KO mice was in stark contrast to what was observed in REV-ERBα KO mice, which was largely a shift towards a less oxidative phenotype demonstrated by decreased expression of PGC1α, *Cpt1b*, *Acadl*, *Acads*, *Ucp2*, *Ucp3*, *Myh2*, and *Tpm3* and is consistent with previously published results[15]. (Fig 4B) However, not all changes in gene expression between REV-ERBβ KO and REV-ERBα KO mice were conflicting. REV-ERBα KO mice also demonstrated decreased expression of the lipogenic genes *Sreb1* and *Scd1* in muscle

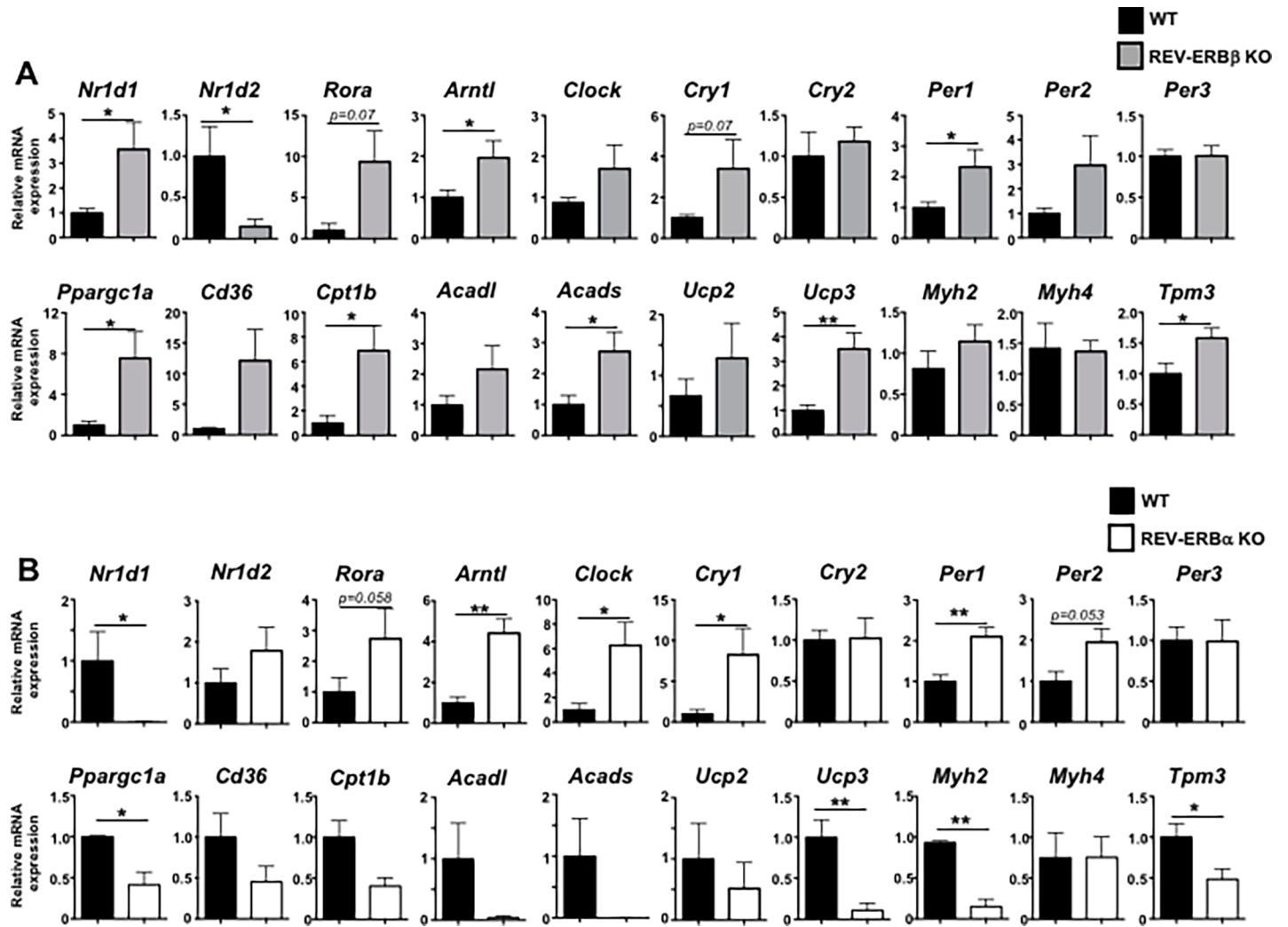


Fig 4. REV-ERB β -deficient mice show increased muscle expression of mitochondrial and fatty acid oxidation genes compared to REV-ERB α -deficient mice. (A) qRT-PCR analysis of muscle (quadriceps) from REV-ERB β -deficient or wild-type littermate controls. Analysis includes effects on expression on ROR α , REV-ERB α , and core molecular clock genes as well as genes encoding proteins involved in fatty acid oxidation, lipid metabolism, and effects on expression on muscle fiber type (*Tpm3*, *Myh2*, *Myh4*). (n = 7 mice per group) Data representative of 3 independent experiments demonstrating similar results. (B) qRT-PCR analysis of muscle (quadriceps) from REV-ERB α -deficient or wild-type littermate controls. Analysis includes effects on expression on ROR α , REV-ERB α , and core molecular clock genes as well as on expression of genes encoding proteins involved in fatty acid oxidation, lipid metabolism, and expression on muscle fiber type (*Tpm3*, *Myh2*, *Myh4*). (n = 5 mice per group) Data representative of 2 independent experiments demonstrating similar results. Values are mean \pm s.e.m. Statistical significance was assessed using Student's two-tailed *t*-tests. **p*<0.05, ***p*<0.01.

<https://doi.org/10.1371/journal.pone.0196787.g004>

while loss of REV-ERB α de-repressed *Fasn* and *Il6* (S3B Fig) However, unlike the muscle tissue, gene expression analysis of livers from REV-ERB β KO and REV-ERB α KO mice demonstrated similar trends in gene expression (*G6Pase*, *Cd36*, *Clock*) or no effects (*Pepck*) on gene expression *in vivo* (S3C and S3D Fig). These data are consistent with previously published work indicating that REV-ERB α and REV-ERB β have largely overlapping roles in liver metabolism, with REV-ERB α acting as the dominant factor [19, 20]. These data suggest that in liver, REV-ERB β appears to have overlapping functions to REV-ERB α . However, in skeletal muscle, the effects mediated by the loss of REV-ERB β are in contrast to those of REV-ERB α .

REV-ERB β -deficient mice exhibit an altered circadian metabolism and feeding schedule

Due to the increased expression of genes involved in mitochondrial biogenesis in the REV-ERB β KO mice compared to WT controls, we wanted to determine whether this translated to effects on metabolism and any other circadian driven behavior. Real-time oxygen consumption (VO₂), carbon dioxide production (VCO₂), ambulatory activity and food consumption were monitored in twelve week-old male mice fed a normal chow diet using the CLAMS system. Energy expenditure (EE) and RER (Respiratory exchange ratio) were calculated based on the gas exchange as described in the Methods section (Fig 5A–5C). Body composition was

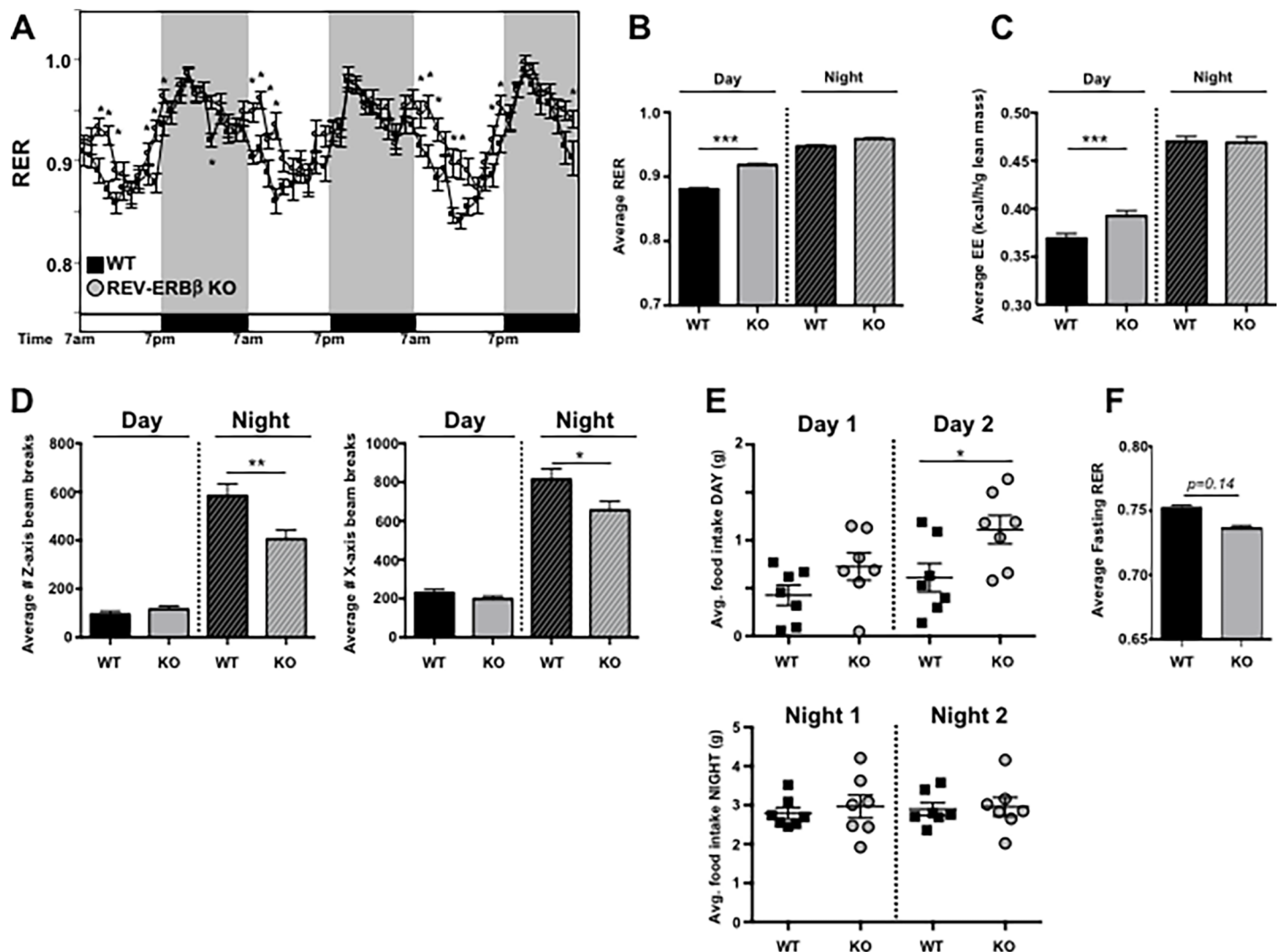


Fig 5. REV-ERB β -deficient mice exhibit an altered metabolic phenotype and feeding schedule. (A) Real-time respiratory exchange ratio (RER) monitoring of pre-acclimated male WT (black square) versus REV-ERB β KO mice (gray circles) using indirect calorimetry. Mice were fed normal chow over a 3 day period. (F(380,4568) = 5.475, $p < 0.0001$). (B) Average RER value, (C) energy expenditure, and (D) infrared activity beam break counts, indicating movement, for day versus night of the mice in panel A. (n = 7 per group). (E) Food intake measurements of male WT (black square) versus male REV-ERB β KO mice (gray circles) fed normal chow over a 2 day period. (F) Average fasting RER value taken from a 6 hour period during the fast. (n = 7 per group) Data are representative of 2 independent experiments demonstrating similar results. Experiments using female mice demonstrated similar results (data not shown). Values are mean \pm s.e.m. Average RER was obtained using ANCOVA (analysis of covariance)[38] with ambulatory activity used as a covariate. Statistical significance was assessed using two-way ANOVA or Student's two-tailed *t*-tests. * $p < 0.05$, ** $p < 0.01$, *** $p < 0.005$.

<https://doi.org/10.1371/journal.pone.0196787.g005>

obtained just prior to the CLAMS analysis, with no differences observed in lean, fat, and fluid masses or total body weight between groups (S4A Fig). The RER is a surrogate indicator of the caloric source being utilized for energy production by an animal. It varies between 0.7, where lipids are the predominant fuel source, to 1.0, where carbohydrates are the main contributors. The REV-ERB β KO mice showed a delay in the typical circadian drop in RER that occurs from the dark to light phase transition when mice shift from high activity and feeding to resting and sleep (Fig 5A and 5B). This prolonged high RER cycle indicates an increased relative contribution of carbohydrates as an energy source in the KO animals. This could be due to their increased chow consumption, observed during the light phase while in the CLAMS (S4B Fig). This light-phase specific increase in eating was further confirmed in REV-ERB β KO mice tested in the BioDAQ system, which uses highly sensitive feeding monitoring hoppers adapted to regular housing cages (Fig 5E, S4D Fig). Additionally, an increase in energy expenditure was detected in association with the observed increased daytime chow consumption in the REV-ERB β KO mice (Fig 5C). Nighttime energy expenditure in REV-ERB β KO mice was comparable to WT mice, despite the KO animals being less active during this time (Fig 5D). Whether the increase in energy expenditure in the KO mice during the daytime can be attributed to elevated feeding and digestive processes *per se* remains to be tested. Ambulatory activity during the light-phase was similar between the groups and thus, cannot explain that. However, upon fasting, the KO's demonstrated decreased RER relative to WT controls, which may be a result from a faster transition to fat burning (Fig 5F). Regardless, the increased caloric output can, at least in part, account for the absence of weight gain by the KO's in spite of their higher caloric intake (S4E Fig). These data indicate that REV-ERB β regulates circadian behaviors and metabolism *in vivo*.

Discussion

REV-ERB α has recently been identified as a key regulator of skeletal muscle mitochondrial function [15]. Due to the overlapping gene expression profiles and similarity in DNA binding domains, REV-ERB β is thought to be redundant to REV-ERB α . Our studies were aimed at gaining a better understanding of REV-ERB β 's function in skeletal muscle and overall metabolism. In this report, we utilized the C2C12 *in vitro* cell culture model and REV-ERB β -deficient mice to investigate the role of this NR in comparison to REV-ERB α 's function in skeletal muscle *in vitro* and *in vivo*. Here we report that overexpression and knock down of REV-ERB β drives mitochondrial biogenesis in C2C12 cells, exhibited by increased MitoTracker Red staining and increased expression of genes involved in skeletal muscle energy metabolism. We also showed that skeletal muscle from REV-ERB β KO mice exhibited a similar gene expression profile as the C2C12 cells in which REV-ERB β was knocked down, which was in contrast to skeletal muscle gene expression in REV-ERB α KO mice. Furthermore, we demonstrated that REV-ERB β KO mice present with an altered metabolic phenotype and feeding behavior schedule, with KO mice eating more and utilizing more carbohydrates as fuel during their nocturnal/sleep period. In terms of muscle and energy expenditure, our data suggest that REV-ERB β may not be as functionally redundant to REV-ERB α as originally hypothesized.

Our initial hypothesis was based on the view, held by some in the field, that REV-ERB α and REV-ERB β are functionally redundant, with REV-ERB α acting as the dominant factor [20]. Overexpression studies are excellent tools to determine whether a protein, in this case REV-ERB β , is able to perform certain cellular functions. Our initial studies in C2C12 cells supported this hypothesis as overexpression of each REV-ERB resulted in relatively similar functional outputs, largely increased mitochondrial biogenesis and expression of genes involved in skeletal muscle metabolism. However, the shRNA knock down of REV-ERB β drove further

inquiry into REV-ERB β 's function in skeletal muscle. The increased MitoTracker Red staining and the changes in gene expression observed surprised us, particularly since evaluation of C2C12 cells using a dominant negative REV-ERB β yielded opposite results to ours[17]. However, this construct still possessed REV-ERB β 's N-terminal region, which has been shown to interact with the transcriptional co-factor Tip60 in order to regulate gene transcription in a ligand-independent manner[39, 40]. Thus, REV-ERB β was not completely eliminated and could have recruited co-factors to modify gene transcription in a ligand-independent manner. Alternatively, since ROR α and REV-ERB α bind the same DNA consensus sequence as REV-ERB β , the overexpression of the dominant negative REV-ERB β could have blocked the ability of ROR α or REV-ERB α to bind to the RORE and again, affect transcription. However, use of REV-ERB β shRNA bypassed these issues and may account for the differences.

Overexpression of REV-ERB α has been demonstrated to drive mitochondrial biogenesis whereas loss of REV-ERB α has the opposite effect[15]. However, the effects rendered by overexpression and loss of REV-ERB β were not opposite to each other. It is possible that the increased mitochondrial biogenesis in the absence of REV-ERB β is a consequence of increased REV-ERB α or increased ROR α . Indeed, we consistently observed increased expression of both NRs in the absence of REV-ERB β . Like overexpression of REV-ERB α , overexpression of ROR α has also been shown to regulate the transcription of genes involved in lipid metabolism and energy metabolism in skeletal muscle[36]. REV-ERB α , ROR α , and REV-ERB β have been demonstrated to bind to conserved ROREs/RevREs in REV-ERB α 's promoter region[34, 35], with ROR α driving gene expression whereas the REV-ERBs repress REV-ERB α gene expression. This autoregulation is likely the reason for the dramatic downregulation of gene expression observed on REV-ERB β when REV-ERB α was overexpressed and vice versa. It is possible that knock down or loss of REV-ERB β relieved repression on REV-ERB α , hence the increased expression *in vitro* and *in vivo*. Another possibility is that the overexpression of ROR α , which can also bind ROREs, drove gene expression and thus, increased mitochondrial biogenesis. Alternatively, loss of REV-ERB β could have relieved repression on *Bmal1*, which is known to activate ROR α and REV-ERB α transcription through binding to their respective E-box regions[41]. Increased *Bmal1* may account for the increased expression of REV-ERB α and ROR α observed both *in vitro* and *in vivo*. Future studies need to be performed to determine the mechanism and which NRs may be driving the increased mitochondrial function in both REV-ERB β -deficient C2C12 cells and in skeletal muscle *in vivo*.

The circadian clock influences a broad range of physiological processes, including fasting/feeding cycles[2]. Initial analysis of REV-ERB α KO versus REV-ERB β KO mice indicated that while loss of REV-ERB α affected circadian output, loss of REV-ERB β had minimal effect[19]. However, our data indicate that REV-ERB β does affect circadian gene expression in a manner similar to REV-ERB α . Overexpression and knock-out of REV-ERB β generated a similar gene expression profile as REV-ERB α overexpression and knock-out. However, our data indicate that at least *in vitro*, the circadian clock is not as intimately linked to skeletal muscle metabolism as initially thought. While overexpression and knock down had different effects on expression of core clock components, the skeletal muscle metabolic genes were consistently upregulated and appeared to depend more on the expression of ROR α and the REV-ERBs. While this could also be said for the *in vivo* data, we do know that what occurs *in vivo* is significantly more complex and REV-ERB α KO mice present with altered circadian rhythms, which could affect the muscle phenotype[7, 15]. Our data also indicate that REV-ERB β affects circadian outputs, indicated by increased food consumption during the day. This increased food intake could account for the shift and increased RER and EE observed during the day when measured by indirect calorimetry. However, research has revealed that disordered eating, or eating when we are supposed to be sleeping, contributes to weight gain, metabolic syndrome,

and obesity[42, 43]. Despite this, REV-ERB β KO mice do not gain weight over time, instead maintaining similar weight profiles as WT littermate controls. It is possible that the metabolic demands of the skeletal muscle may compensate for the increased food intake. This may also explain the decreased activity observed in the REV-ERB β KO mice during their “active” periods. That is, moving less compensated for the increased metabolism with no change in food intake. Alternatively, the food intake during the day may have disrupted their sleep schedule and the decreased movement may be a function of sleep compensation. Clearly, further in-depth analysis of these behaviors is needed to better understand the phenotype observed.

Conclusions

REV-ERB β plays a role in skeletal muscle mitochondrial biogenesis both *in vitro* and *in vivo*. This effect on mitochondrial gene expression in REV-ERB β KO mice differs from that of REV-ERB α KO mice as each receptor appears to have effects opposite to each other. Furthermore, these differences translate to profound differences on metabolism *in vivo*. Our data suggest that REV-ERB β may not be as functionally redundant to REV-ERB α as originally hypothesized. Thus, development of dissociated REV-ERB modulators (REV-ERB α -specific versus REV-ERB β -specific) may be beneficial for the treatment of metabolic syndrome.

Supporting information

S1 Fig. Overexpression of the REV-ERBs does not affect C2C12 viability but exerts differential effects on genes involved in lipid metabolism. (A) Flow cytometry (FACS) after 6 days in culture using a viability dye. FACS panels (top) are representative plots of the overall health of the C2C12 cultures on Day 6. Graph (bottom) represents the average viability across all cultures per condition (n = 3). (B) Representative images of the C2C12 cultures at 10x and 20x magnification on Day 6 demonstrating the differentiation of the cells and no overt cell death. (C) qRT-PCR analysis of genes involved in lipid metabolism and inflammation, including *Srebf1*, *Scd1*, *Fasn*, and *Il6* in C2C12 cells overexpressing REV-ERB α (top) or REV-ERB β (bottom) relative to empty vector control. Data are representative of 3 separate experiments demonstrating similar results. Statistical significance was assessed using Student’s two-tailed *t*-tests. **p* < 0.05.

(TIFF)

S2 Fig. Knock-down of REV-ERB β does not affect C2C12 viability but inhibits expression of genes involved in lipid metabolism. (A) Cell viability determined by flow cytometry (FACS) after 6 days in culture using a viability dye. FACS panels (top) are representative plots of the overall health of the C2C12 cultures on Day 6. Graph (bottom) represents the average viability across all cultures per condition (n = 3). (B) Representative images of the C2C12 cultures at 10x and 20x magnification on Day 6 demonstrating the differentiation of the cells and no overt cell death. (C) qRT-PCR analysis of genes involved in lipid metabolism and inflammation, including *Srebf1*, *Scd1*, *Fasn*, and *Il6* in C2C12 cells in which REV-ERB β was knocked down relative to CD8 control. Data are representative of 3 separate experiments demonstrating similar results. Statistical significance was assessed using Student’s two-tailed *t*-tests. **p* < 0.05.

(TIFF)

S3 Fig. REV-ERB β -deficient mice show differential expression of lipid metabolism genes in muscle compared to REV-ERB α -deficient mice, but not liver. (A) qRT-PCR analysis of muscle (quadriceps) from REV-ERB β -deficient or wild-type littermate controls. Analysis includes effects on expression of genes involved in lipid metabolism and inflammation, including *Srebf1*, *Scd1*, *Fasn*, and *Il6*. (B) qRT-PCR analysis of muscle (quadriceps) from REV-ERB α -

deficient or wild-type littermate controls. Analysis includes effects on expression of genes involved in lipid metabolism, including *Srebf1*, *Scd1*, *Fasn*, and *Il6*. (C) qRT-PCR analysis of genes involved in glucose metabolism (*G6pase*, *Pepck*), lipid uptake (*Cd36*), and circadian function (*Clock*) from livers of REV-ERB β -deficient or wild-type littermate controls. (n = 7 mice per group) Data representative of 3 independent experiments demonstrating similar results. (D) qRT-PCR analysis of genes involved in glucose metabolism (*G6pase*, *Pepck*), lipid uptake (*Cd36*), and circadian function (*Clock*) from livers of REV-ERB α -deficient or wild-type littermate controls. For REV-ERB β KO mice: (n = 7 mice per group) Data representative of 3 independent experiments demonstrating similar results. For REV-ERB α KO mice: (n = 5 mice per group) Data representative of 2 independent experiments demonstrating similar results. Values are mean \pm s.e.m. Statistical significance was assessed using Student's two-tailed *t*-tests. **p*<0.05.

(TIFF)

S4 Fig. REV-ERB β -deficient mice consume more food than WT littermate controls. (A) Body weight and body composition of the mice in the metabolic chambers experiment. (B) Measurement of accumulated food intake of chow-fed, male WT and REV-ERB β KO mice during their time in the metabolic chambers. (C) Analysis of food intake for 12-hour periods (day versus night) in male WT and REV-ERB β KO mice during their time in the metabolic chambers. (D) Table indicating the average daily food intake, number of bouts, and % time in each bout for WT and REV-ERB β KO mice in the BioDAQ experiments. (E) Body weight and body composition analysis of male mice from Fig 4 at 30 weeks of age. (n = 7 mice per group). Similar results were observed in separate cohorts of male and female mice. Values are mean \pm s.e.m. Statistical significance was assessed using Student's two-tailed *t*-tests. **p*<0.05.

(TIFF)

Acknowledgments

We would like to thank Dr. Nelson Bruno for his helpful comments and critiques of experimental design and data analysis.

Author Contributions

Conceptualization: Laura A. Solt.

Data curation: Melissa Kazantzis.

Formal analysis: Melissa Kazantzis, Laura A. Solt.

Funding acquisition: Thomas P. Burris, Laura A. Solt.

Investigation: Ariadna Amador, Sean Campbell, Melissa Kazantzis, Gary Lan.

Supervision: Laura A. Solt.

Writing – original draft: Laura A. Solt.

Writing – review & editing: Ariadna Amador, Melissa Kazantzis, Thomas P. Burris, Laura A. Solt.

References

1. Marcheva B, Ramsey KM, Affinati A, Bass J. Clock genes and metabolic disease. *J Appl Physiol* (1985). 2009; 107(5):1638–46. <https://doi.org/10.1152/jappphysiol.00698.2009> PMID: 19661448; PubMed Central PMCID: PMC277795.

2. Marcheva B, Ramsey KM, Peek CB, Affinati A, Maury E, Bass J. Circadian clocks and metabolism. *Handb Exp Pharmacol*. 2013;(217):127–55. https://doi.org/10.1007/978-3-642-25950-0_6 PMID: 23604478; PubMed Central PMCID: PMC4089089.
3. Dibner C, Schibler U, Albrecht U. The mammalian circadian timing system: organization and coordination of central and peripheral clocks. *Annu Rev Physiol*. 2010; 72:517–49. Epub 2010/02/13. <https://doi.org/10.1146/annurev-physiol-021909-135821> PMID: 20148687.
4. Takahashi JS, Hong HK, Ko CH, McDearmon EL. The genetics of mammalian circadian order and disorder: implications for physiology and disease. *Nature reviews Genetics*. 2008; 9(10):764–75. Epub 2008/09/20. <https://doi.org/10.1038/nrg2430> PMID: 18802415; PubMed Central PMCID: PMC3758473.
5. Crumbley C, Burris TP. Direct regulation of CLOCK expression by REV-ERB. *PLoS one*. 2011; 6(3): e17290. Epub 2011/04/12. <https://doi.org/10.1371/journal.pone.0017290> PMID: 21479263; PubMed Central PMCID: PMC3066191.
6. Crumbley C, Wang Y, Kojetin DJ, Burris TP. Characterization of the core mammalian clock component, NPAS2, as a REV-ERBalpha/RORalpha target gene. *The Journal of biological chemistry*. 2010; 285(46):35386–92. <https://doi.org/10.1074/jbc.M110.129288> PMID: 20817722; PubMed Central PMCID: PMC32975162.
7. Preitner N, Damiola F, Lopez-Molina L, Zakany J, Duboule D, Albrecht U, et al. The orphan nuclear receptor REV-ERBalpha controls circadian transcription within the positive limb of the mammalian circadian oscillator. *Cell*. 2002; 110(2):251–60. Epub 2002/08/02. doi: S0092867402008255 [pii]. PMID: 12150932.
8. Solt LA, Kojetin DJ, Burris TP. The REV-ERBs and RORs: molecular links between circadian rhythms and lipid homeostasis. *Future medicinal chemistry*. 2011; 3(5):623–38. <https://doi.org/10.4155/fmc.11.9> PMID: 21526899; PubMed Central PMCID: PMC3134326.
9. Dumas B, Harding HP, Choi HS, Lehmann KA, Chung M, Lazar MA, et al. A new orphan member of the nuclear hormone receptor superfamily closely related to Rev-Erb. *Molecular endocrinology*. 1994; 8(8):996–1005. <https://doi.org/10.1210/mend.8.8.7997240> PMID: 7997240.
10. Forman BM, Chen J, Blumberg B, Kliewer SA, Henshaw R, Ong ES, et al. Cross-talk among ROR alpha 1 and the Rev-erb family of orphan nuclear receptors. *Molecular endocrinology*. 1994; 8(9):1253–61. <https://doi.org/10.1210/mend.8.9.7838158> PMID: 7838158.
11. Bonnelye E, Vanacker JM, Desbiens X, Begue A, Stehelin D, Laudet V. Rev-erb beta, a new member of the nuclear receptor superfamily, is expressed in the nervous system during chicken development. *Cell growth & differentiation: the molecular biology journal of the American Association for Cancer Research*. 1994; 5(12):1357–65. PMID: 7696184.
12. Harding HP, Lazar MA. The orphan receptor Rev-ErbA alpha activates transcription via a novel response element. *Molecular and cellular biology*. 1993; 13(5):3113–21. Epub 1993/05/01. PMID: 8474464; PubMed Central PMCID: PMC359704.
13. Harding HP, Lazar MA. The monomer-binding orphan receptor Rev-Erb represses transcription as a dimer on a novel direct repeat. *Molecular and cellular biology*. 1995; 15(9):4791–802. Epub 1995/09/01. PMID: 7651396; PubMed Central PMCID: PMC230723.
14. Smith AG, Muscat GE. Orphan nuclear receptors: therapeutic opportunities in skeletal muscle. *American journal of physiology Cell physiology*. 2006; 291(2):C203–17. <https://doi.org/10.1152/ajpcell.00476.2005> PMID: 16825600.
15. Woldt E, Sebtii Y, Solt LA, Duhem C, Lancel S, Eeckhoutte J, et al. Rev-erb-alpha modulates skeletal muscle oxidative capacity by regulating mitochondrial biogenesis and autophagy. *Nature medicine*. 2013; 19(8):1039–46. <https://doi.org/10.1038/nm.3213> PMID: 23852339; PubMed Central PMCID: PMC3737409.
16. Smith AG, Muscat GE. Skeletal muscle and nuclear hormone receptors: implications for cardiovascular and metabolic disease. *The international journal of biochemistry & cell biology*. 2005; 37(10):2047–63. <https://doi.org/10.1016/j.biocel.2005.03.002> PMID: 15922648.
17. Ramakrishnan SN, Lau P, Burke LJ, Muscat GE. Rev-erbbeta regulates the expression of genes involved in lipid absorption in skeletal muscle cells: evidence for cross-talk between orphan nuclear receptors and myokines. *The Journal of biological chemistry*. 2005; 280(10):8651–9. <https://doi.org/10.1074/jbc.M413949200> PMID: 15623503.
18. Delezie J, Dumont S, Dardente H, Oudart H, Grechez-Cassiau A, Klosen P, et al. The nuclear receptor REV-ERBalpha is required for the daily balance of carbohydrate and lipid metabolism. *FASEB journal: official publication of the Federation of American Societies for Experimental Biology*. 2012; 26(8):3321–35. <https://doi.org/10.1096/fj.12-208751> PMID: 22562834.

19. Cho H, Zhao X, Hatori M, Yu RT, Barish GD, Lam MT, et al. Regulation of circadian behaviour and metabolism by REV-ERB-alpha and REV-ERB-beta. *Nature*. 2012; 485(7396):123–7. <https://doi.org/10.1038/nature11048> PMID: 22460952; PubMed Central PMCID: PMC3367514.
20. Bugge A, Feng D, Everett LJ, Briggs ER, Mullican SE, Wang F, et al. Rev-erbalpha and Rev-erbeta coordinately protect the circadian clock and normal metabolic function. *Genes Dev*. 2012; 26(7):657–67. <https://doi.org/10.1101/gad.186858.112> PMID: 22474260; PubMed Central PMCID: PMC3323877.
21. Chomez P, Neveu I, Mansen A, Kiesler E, Larsson L, Vennstrom B, et al. Increased cell death and delayed development in the cerebellum of mice lacking the rev-erbA(alpha) orphan receptor. *Development*. 2000; 127(7):1489–98. PMID: 10704394.
22. Banerjee S, Wang Y, Solt LA, Griffett K, Kazantzis M, Amador A, et al. Pharmacological targeting of the mammalian clock regulates sleep architecture and emotional behaviour. *Nat Commun*. 2014; 5:5759. <https://doi.org/10.1038/ncomms6759> PMID: 25536025; PubMed Central PMCID: PMC34495958.
23. Pear WS, Miller JP, Xu L, Pui JC, Soffer B, Quackenbush RC, et al. Efficient and rapid induction of a chronic myelogenous leukemia-like myeloproliferative disease in mice receiving P210 bcr/abl-transduced bone marrow. *Blood*. 1998; 92(10):3780–92. Epub 1998/11/10. PMID: 9808572.
24. Chen R, Belanger S, Frederick MA, Li B, Johnston RJ, Xiao N, et al. In vivo RNA interference screens identify regulators of antiviral CD4(+) and CD8(+) T cell differentiation. *Immunity*. 2014; 41(2):325–38. <https://doi.org/10.1016/j.immuni.2014.08.002> PMID: 25148027; PubMed Central PMCID: PMC34160313.
25. Rooney JP, Ryde IT, Sanders LH, Howlett EH, Colton MD, Germ KE, et al. PCR based determination of mitochondrial DNA copy number in multiple species. *Methods Mol Biol*. 2015; 1241:23–38. Epub 2014/10/14. https://doi.org/10.1007/978-1-4939-1875-1_3 PMID: 25308485; PubMed Central PMCID: PMC34312664.
26. Rothman KJ. No adjustments are needed for multiple comparisons. *Epidemiology*. 1990; 1(1):43–6. Epub 1990/01/01. PMID: 2081237.
27. Muscat GE, Wagner BL, Hou J, Tangirala RK, Bischoff ED, Rohde P, et al. Regulation of cholesterol homeostasis and lipid metabolism in skeletal muscle by liver X receptors. *The Journal of biological chemistry*. 2002; 277(43):40722–8. <https://doi.org/10.1074/jbc.M206681200> PMID: 12193599.
28. Dressel U, Allen TL, Pippal JB, Rohde PR, Lau P, Muscat GE. The peroxisome proliferator-activated receptor beta/delta agonist, GW501516, regulates the expression of genes involved in lipid catabolism and energy uncoupling in skeletal muscle cells. *Molecular endocrinology*. 2003; 17(12):2477–93. <https://doi.org/10.1210/me.2003-0151> PMID: 14525954.
29. Holst D, Luquet S, Nogueira V, Kristiansen K, Leverve X, Grimaldi PA. Nutritional regulation and role of peroxisome proliferator-activated receptor delta in fatty acid catabolism in skeletal muscle. *Biochimica et biophysica acta*. 2003; 1633(1):43–50. PMID: 12842194.
30. Wang YX, Lee CH, Tiep S, Yu RT, Ham J, Kang H, et al. Peroxisome-proliferator-activated receptor delta activates fat metabolism to prevent obesity. *Cell*. 2003; 113(2):159–70. PMID: 12705865.
31. Glatz JF, Luiken JJ. From fat to FAT (CD36/SR-B2): Understanding the regulation of cellular fatty acid uptake. *Biochimie*. 2017; 136:21–6. Epub 2016/12/26. <https://doi.org/10.1016/j.biochi.2016.12.007> PMID: 28013071.
32. Jornayvaz FR, Shulman GI. Regulation of mitochondrial biogenesis. *Essays Biochem*. 2010; 47:69–84. <https://doi.org/10.1042/bse0470069> PMID: 20533901; PubMed Central PMCID: PMC33883043.
33. Munoz-Canoves P, Scheele C, Pedersen BK, Serrano AL. Interleukin-6 myokine signaling in skeletal muscle: a double-edged sword? *FEBS J*. 2013; 280(17):4131–48. <https://doi.org/10.1111/febs.12338> PMID: 23663276; PubMed Central PMCID: PMC34163639.
34. Adelmant G, Begue A, Stehelin D, Laudet V. A functional Rev-erb alpha responsive element located in the human Rev-erb alpha promoter mediates a repressing activity. *Proceedings of the National Academy of Sciences of the United States of America*. 1996; 93(8):3553–8. PMID: 8622974; PubMed Central PMCID: PMC339648.
35. Raspe E, Mautino G, Duval C, Fontaine C, Duez H, Barbier O, et al. Transcriptional regulation of human Rev-erbalpha gene expression by the orphan nuclear receptor retinoic acid-related orphan receptor alpha. *The Journal of biological chemistry*. 2002; 277(51):49275–81. <https://doi.org/10.1074/jbc.M206215200> PMID: 12377782.
36. Lau P, Nixon SJ, Parton RG, Muscat GE. RORalpha regulates the expression of genes involved in lipid homeostasis in skeletal muscle cells: caveolin-3 and CPT-1 are direct targets of ROR. *The Journal of biological chemistry*. 2004; 279(35):36828–40. <https://doi.org/10.1074/jbc.M404927200> PMID: 15199055.

37. Solt LA, Wang Y, Banerjee S, Hughes T, Kojetin DJ, Lundasen T, et al. Regulation of circadian behaviour and metabolism by synthetic REV-ERB agonists. *Nature*. 2012; 485(7396):62–8. <https://doi.org/10.1038/nature11030> PMID: 22460951; PubMed Central PMCID: PMC3343186.
38. Tschop MH, Speakman JR, Arch JR, Auwerx J, Bruning JC, Chan L, et al. A guide to analysis of mouse energy metabolism. *Nature methods*. 2011; 9(1):57–63. <https://doi.org/10.1038/nmeth.1806> PMID: 22205519; PubMed Central PMCID: PMC3654855.
39. Simons SS Jr., Edwards DP, Kumar R. Minireview: dynamic structures of nuclear hormone receptors: new promises and challenges. *Molecular endocrinology*. 2014; 28(2):173–82. <https://doi.org/10.1210/me.2013-1334> PMID: 24284822; PubMed Central PMCID: PMC3896641.
40. Wang J, Liu N, Liu Z, Li Y, Song C, Yuan H, et al. The orphan nuclear receptor Rev-erbbeta recruits Tip60 and HDAC1 to regulate apolipoprotein CIII promoter. *Biochimica et biophysica acta*. 2008; 1783(2):224–36. <https://doi.org/10.1016/j.bbamcr.2007.09.004> PMID: 17996965.
41. De Mei C, Ercolani L, Parodi C, Veronesi M, Lo Vecchio C, Bottegoni G, et al. Dual inhibition of REV-ERBbeta and autophagy as a novel pharmacological approach to induce cytotoxicity in cancer cells. *Oncogene*. 2015; 34(20):2597–608. Epub 2014/07/16. <https://doi.org/10.1038/onc.2014.203> PMID: 25023698.
42. Stucchi P, Gil-Ortega M, Merino B, Guzman-Ruiz R, Cano V, Valladolid-Acebes I, et al. Circadian feeding drive of metabolic activity in adipose tissue and not hyperphagia triggers overweight in mice: is there a role of the pentose-phosphate pathway? *Endocrinology*. 2012; 153(2):690–9. <https://doi.org/10.1210/en.2011-1023> PMID: 22147018.
43. Arble DM, Bass J, Laposky AD, Vitaterna MH, Turek FW. Circadian timing of food intake contributes to weight gain. *Obesity*. 2009; 17(11):2100–2. <https://doi.org/10.1038/oby.2009.264> PMID: 19730426; PubMed Central PMCID: PMC3499064.