

EMPLOYING **DIDACTIC DESIGN**, THIS THESIS SEEKS TO EXPLORE ADVANCES IN TRADITIONAL TEACHING METHODS TO PROVIDE ARCHITECTURE STUDENTS WITH HANDS-ON **INTERACTIVE LEARNING** ENVIRONMENTS TO MEET THEIR EVOLVING NEEDS. THESE METHODS ARE EMPHASIZED THROUGH THE **HUMAN BODY'S** CONNECTION TO ARCHITECTURE. TRADITIONALLY, HIGHER EDUCATION PUTS A FOCUS ON COGNITIVE KNOWLEDGE WITH A DISREGARD TO THE BODILY EXPERIENCE. THE PROPOSED ACADEMIC DESIGN CURRICULUM ALLOWS STUDENTS TO LEARN HOW TO DESIGN USING **MULTI-SENSORY** INTERACTION WITH THE BUILT ENVIRONMENT.

CONSCIOUSNESS OF DESIGN

TRANSFORMING THE ACADEMIC ENVIRONMENT

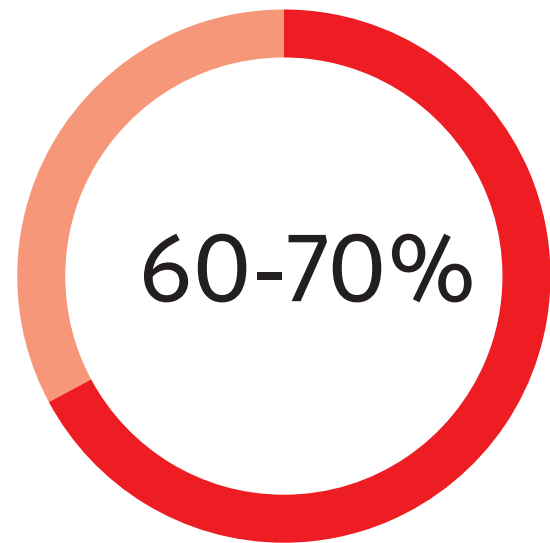


*WHAT DOES ARCHITECTURAL
EDUCATION MEAN TO YOU?*

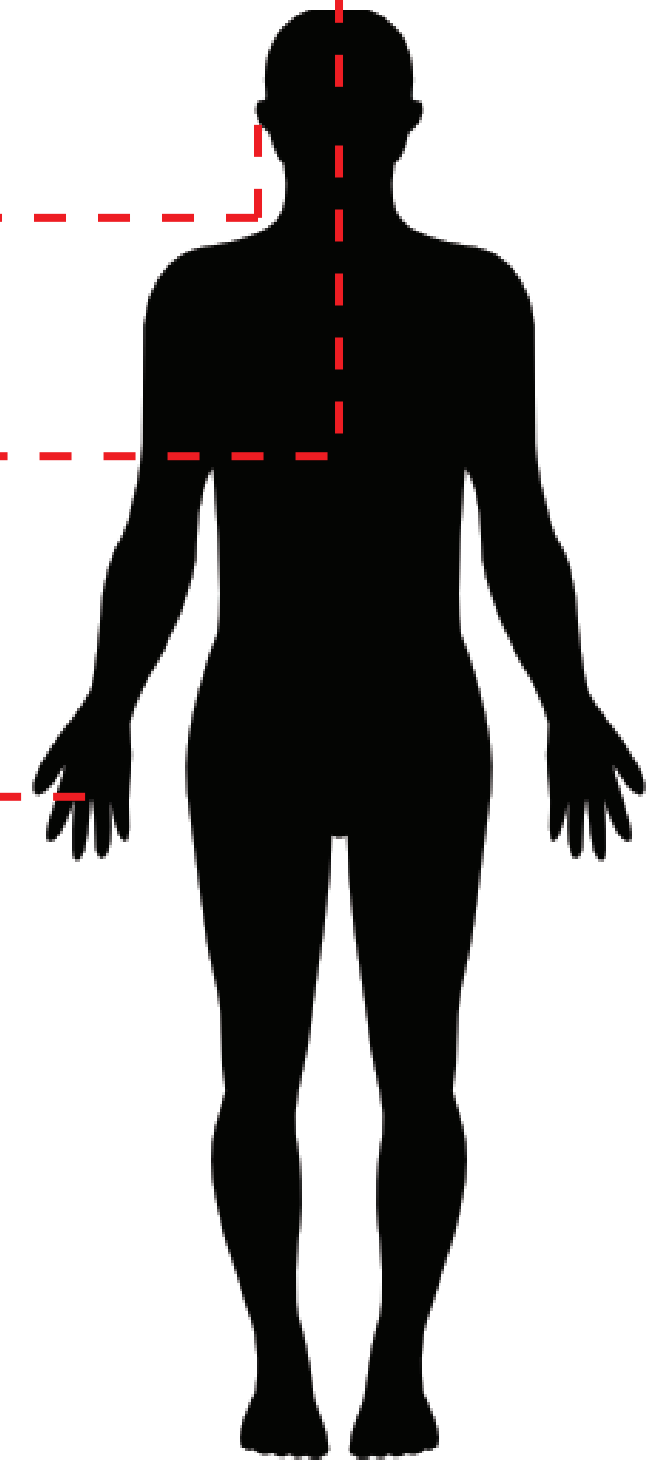
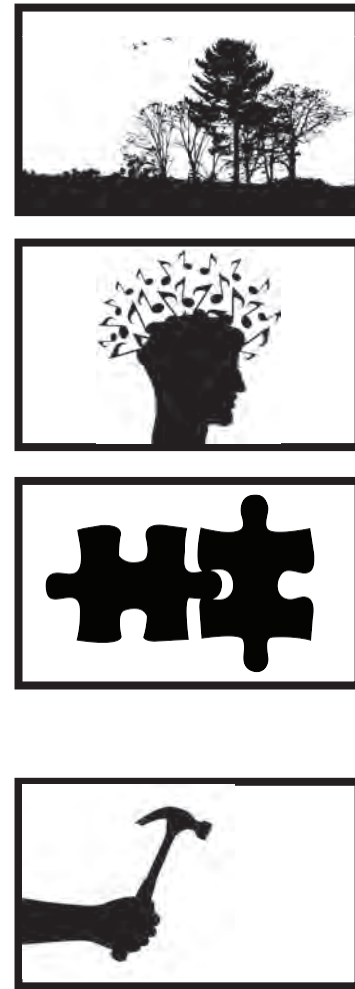


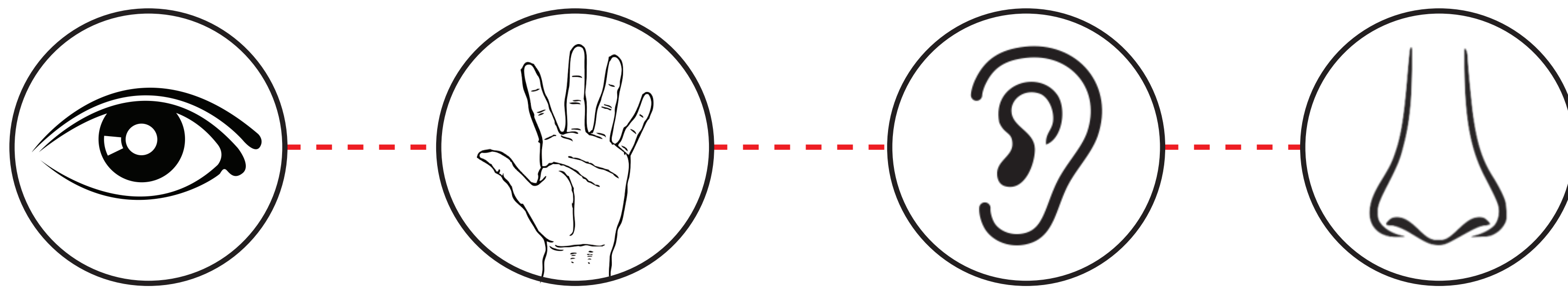


AVERAGE ATTENTION SPAN IN UNIVERSITY STUDENTS



AVERAGE AMOUNT OF INFORMATION ABSORBED FROM LECTURE





“The duty of education is to cultivate and support the human abilities of imagination and empathy [...] the education of the senses and the imagination is necessary for a full and dignified life.”
-Juhani Pallasmaa



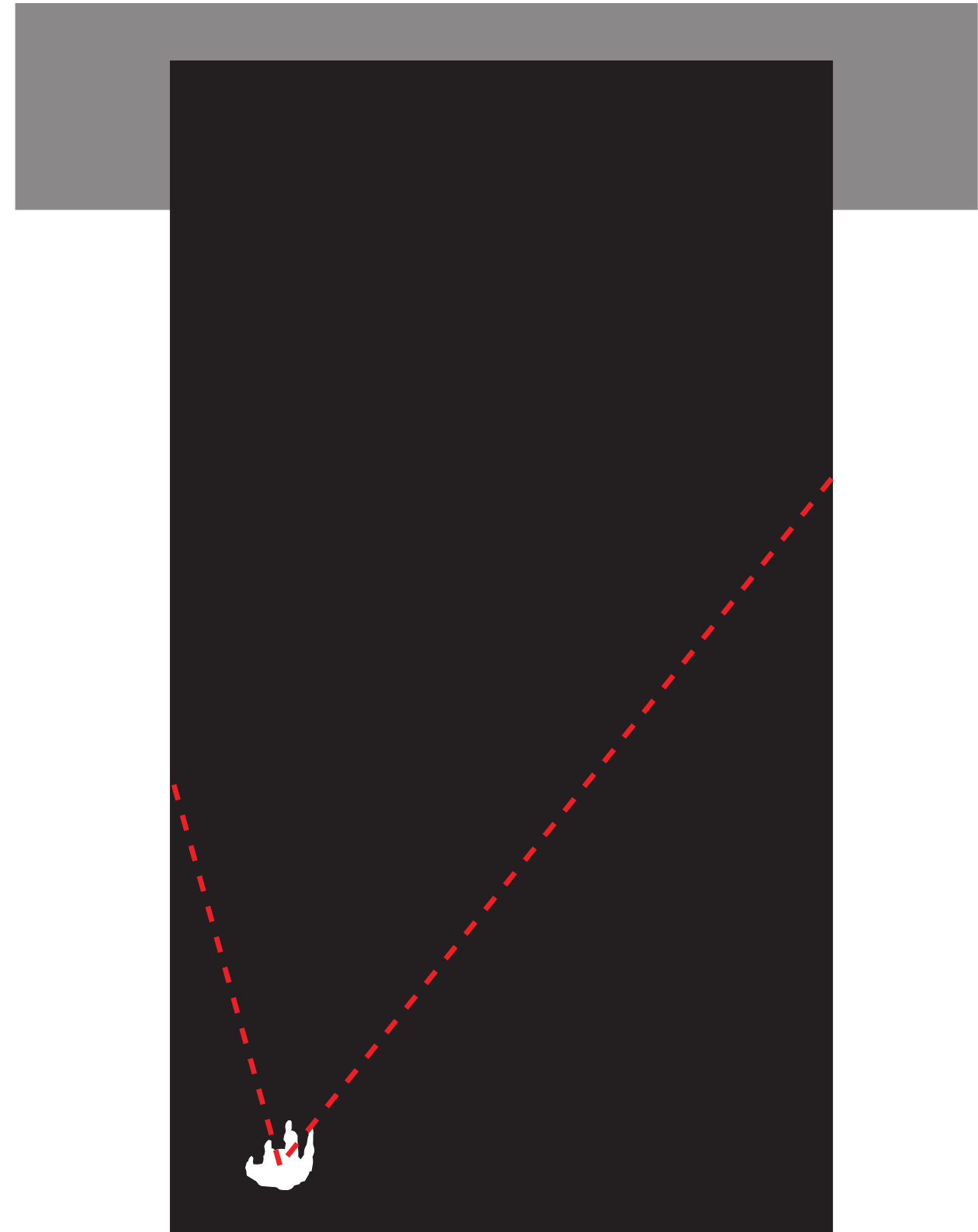
UNIVERSITY OF MARYLAND
SCHOOL OF ARCHITECTURE, PLANNING AND PRESERVATION



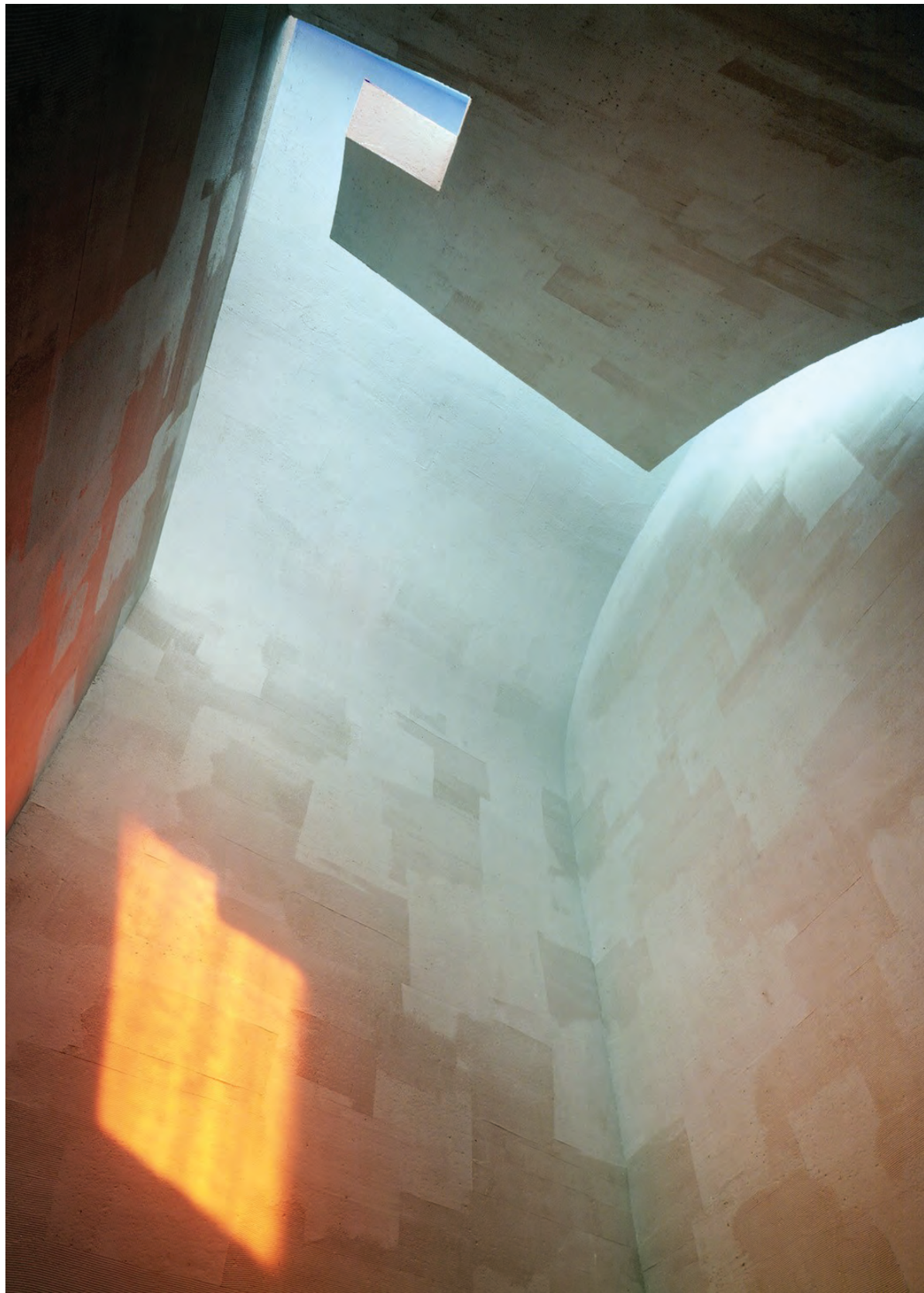
ROGER WILLIAMS UNIVERSITY
SCHOOL OF ARCHITECTURE, ART AND HISTORIC PRESERVATION



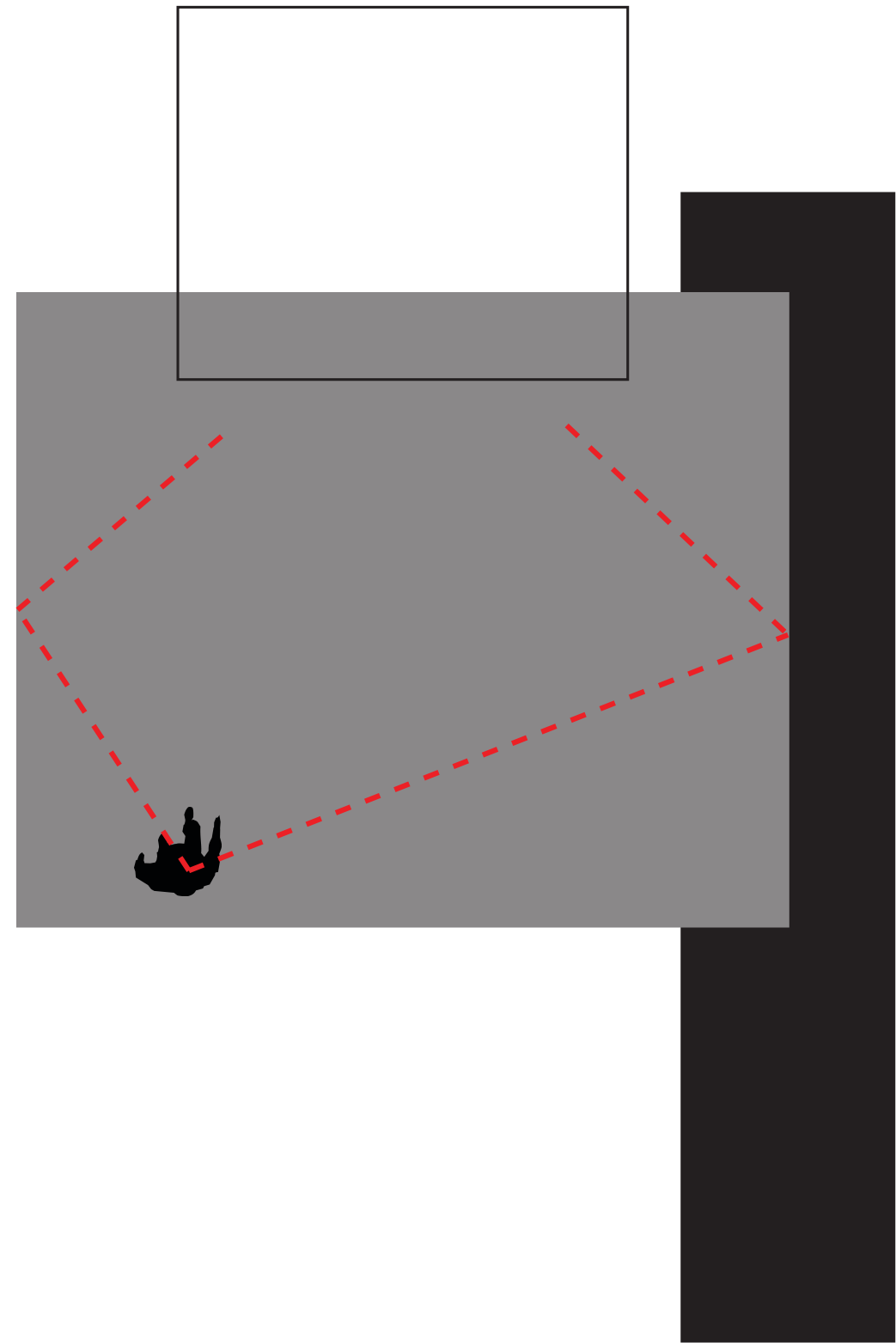
THERME VALS PETER ZUMTHOR



TEXTURE

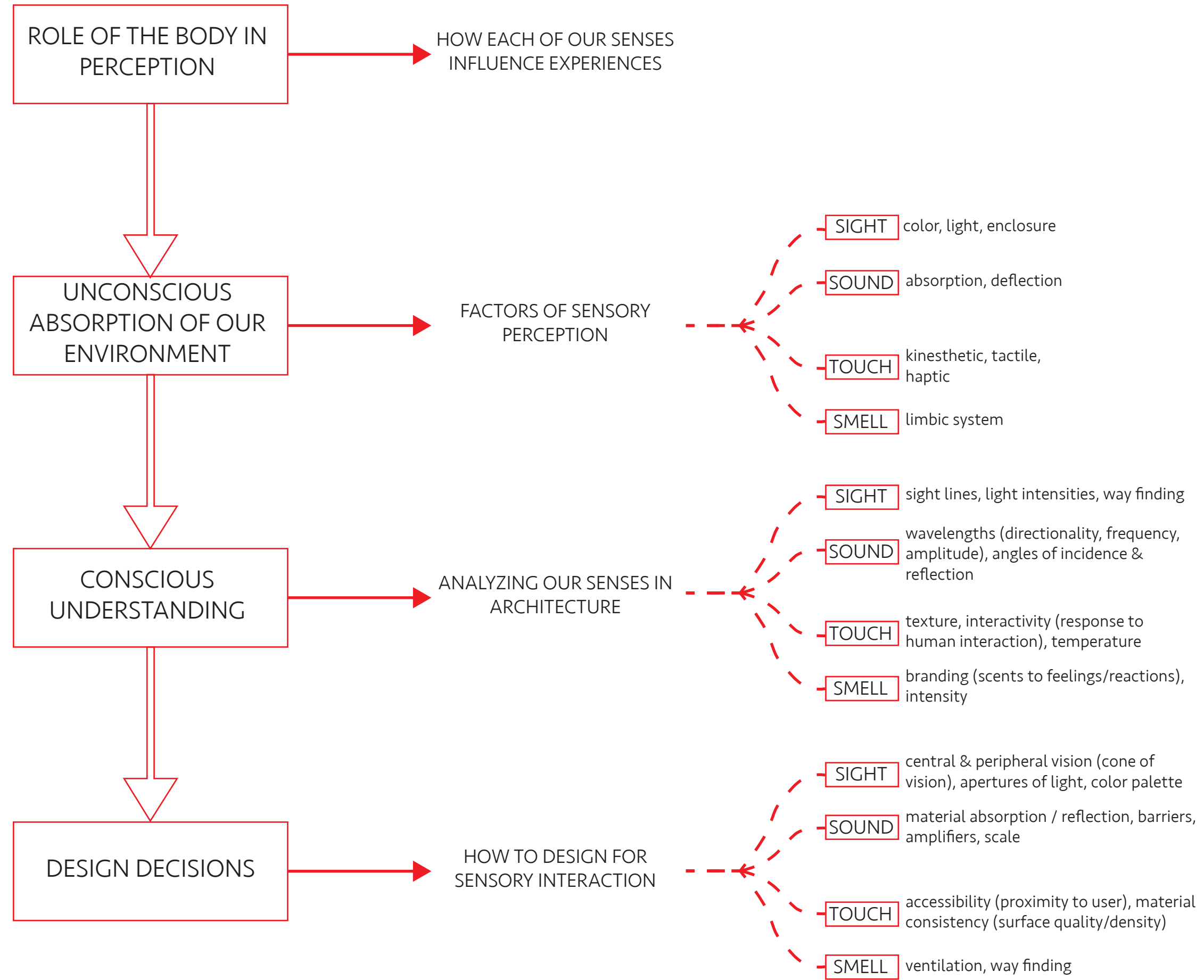


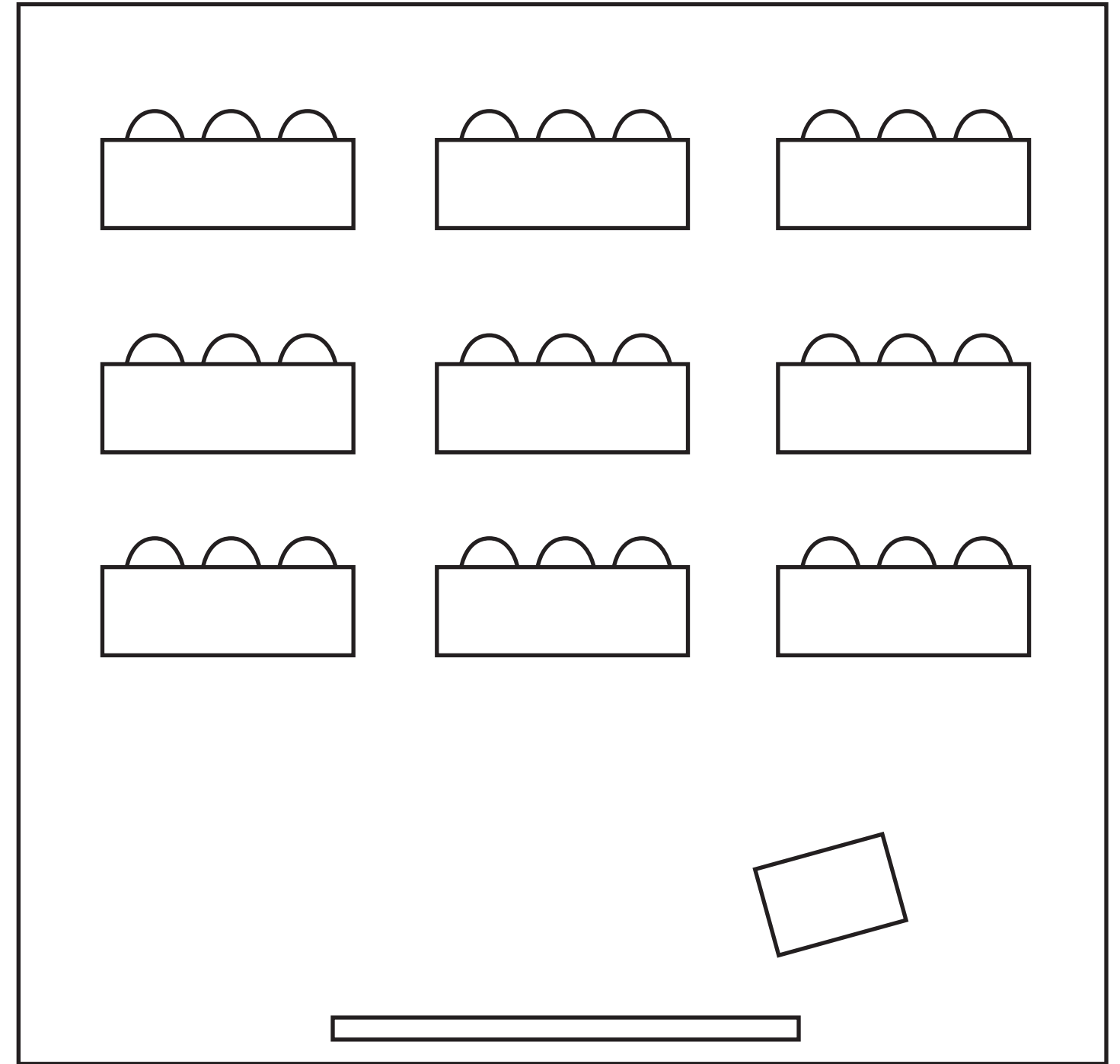
CHAPEL OF ST. IGNATIUS STEVEN HOLL



LIGHT

PHENOMENOLOGY

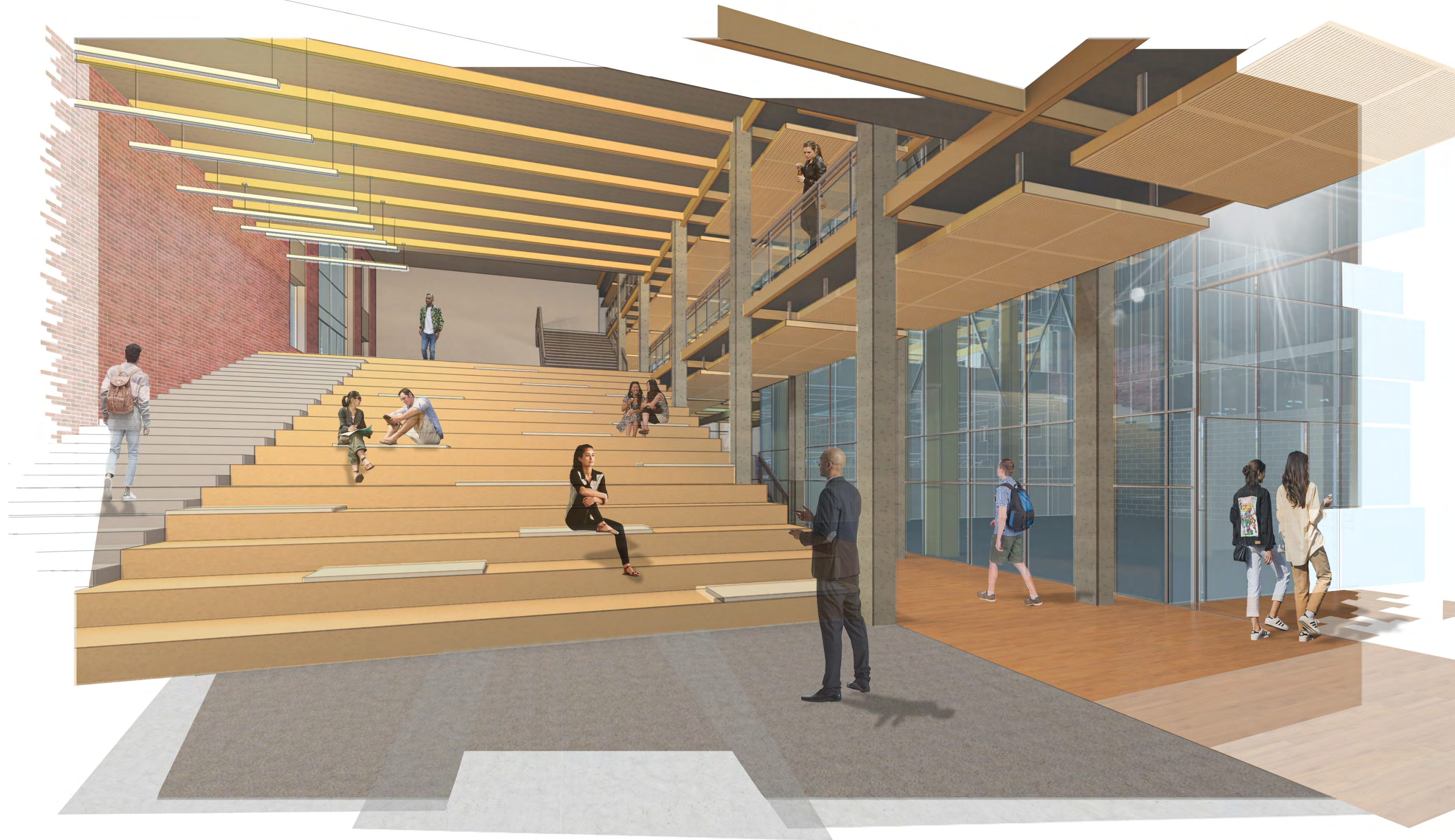




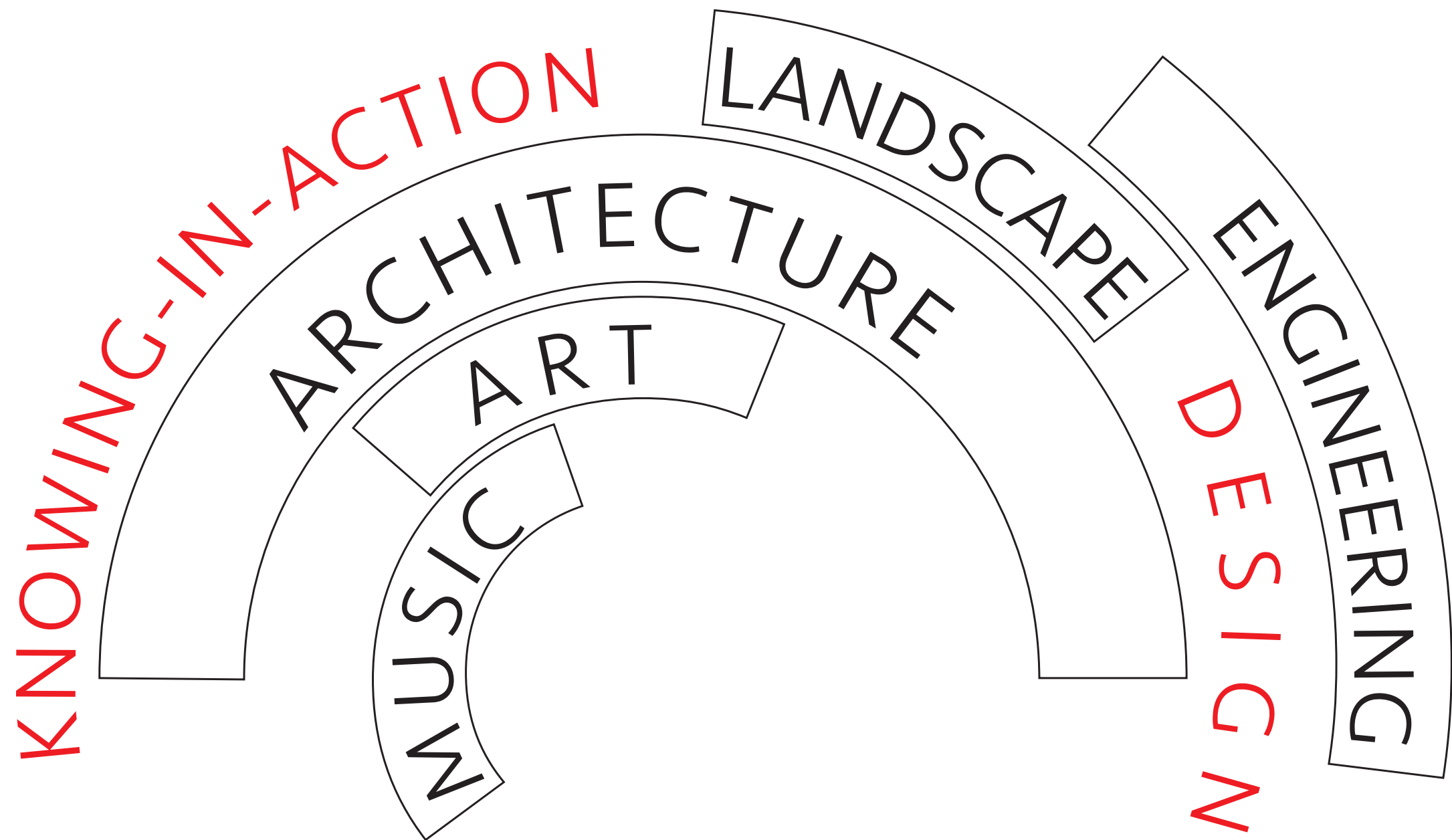
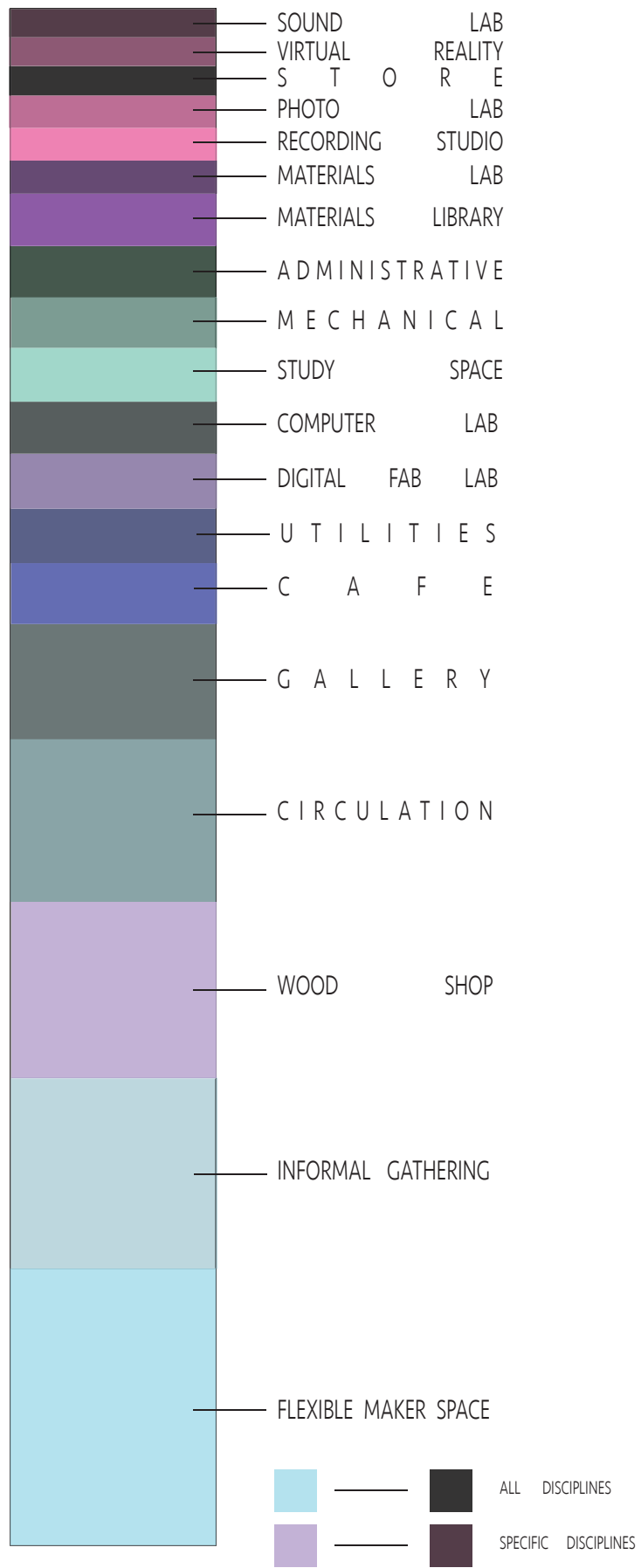
TYPICAL CLASSROOM



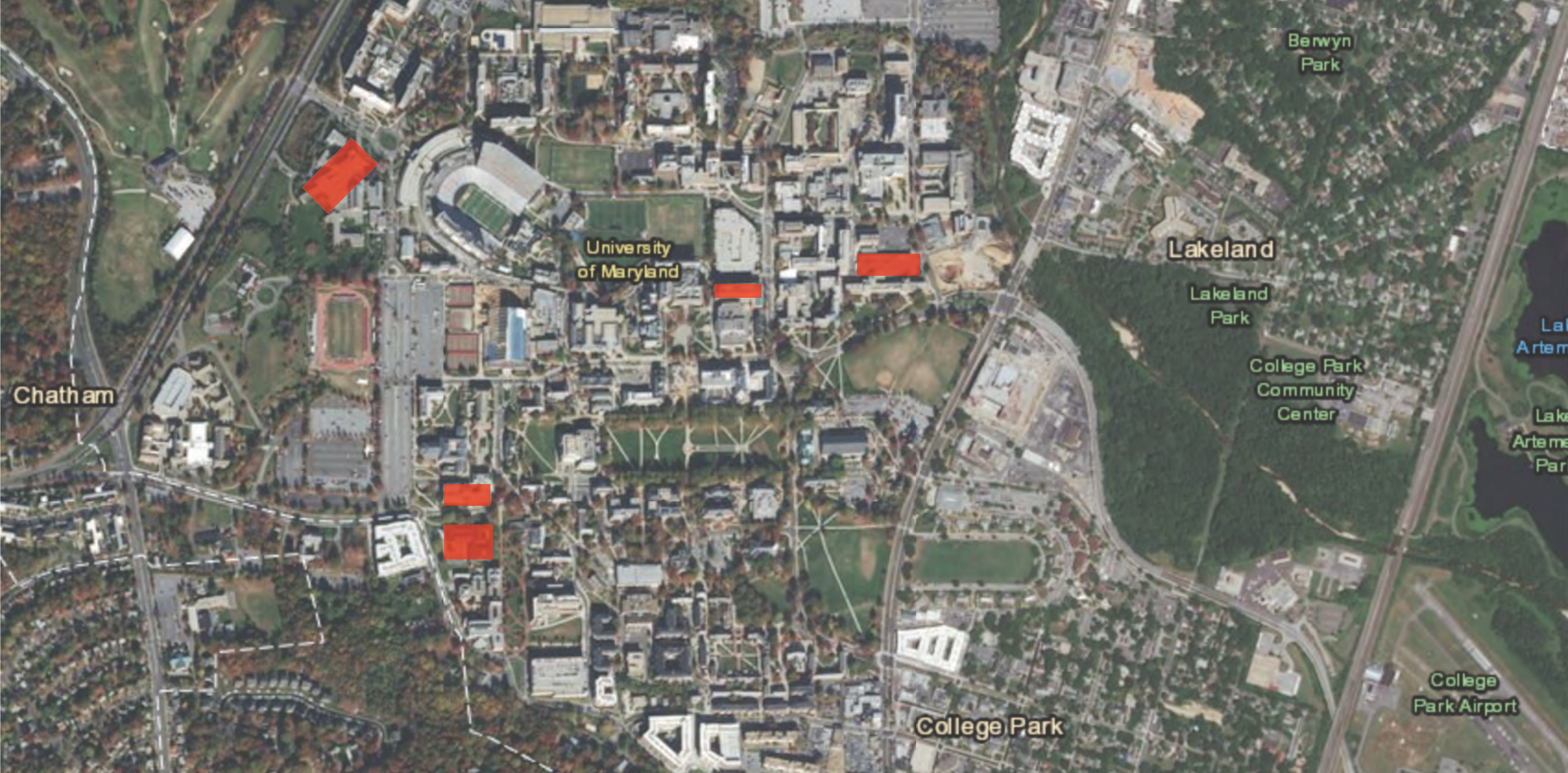
LEARNING ENVIRONMENTS



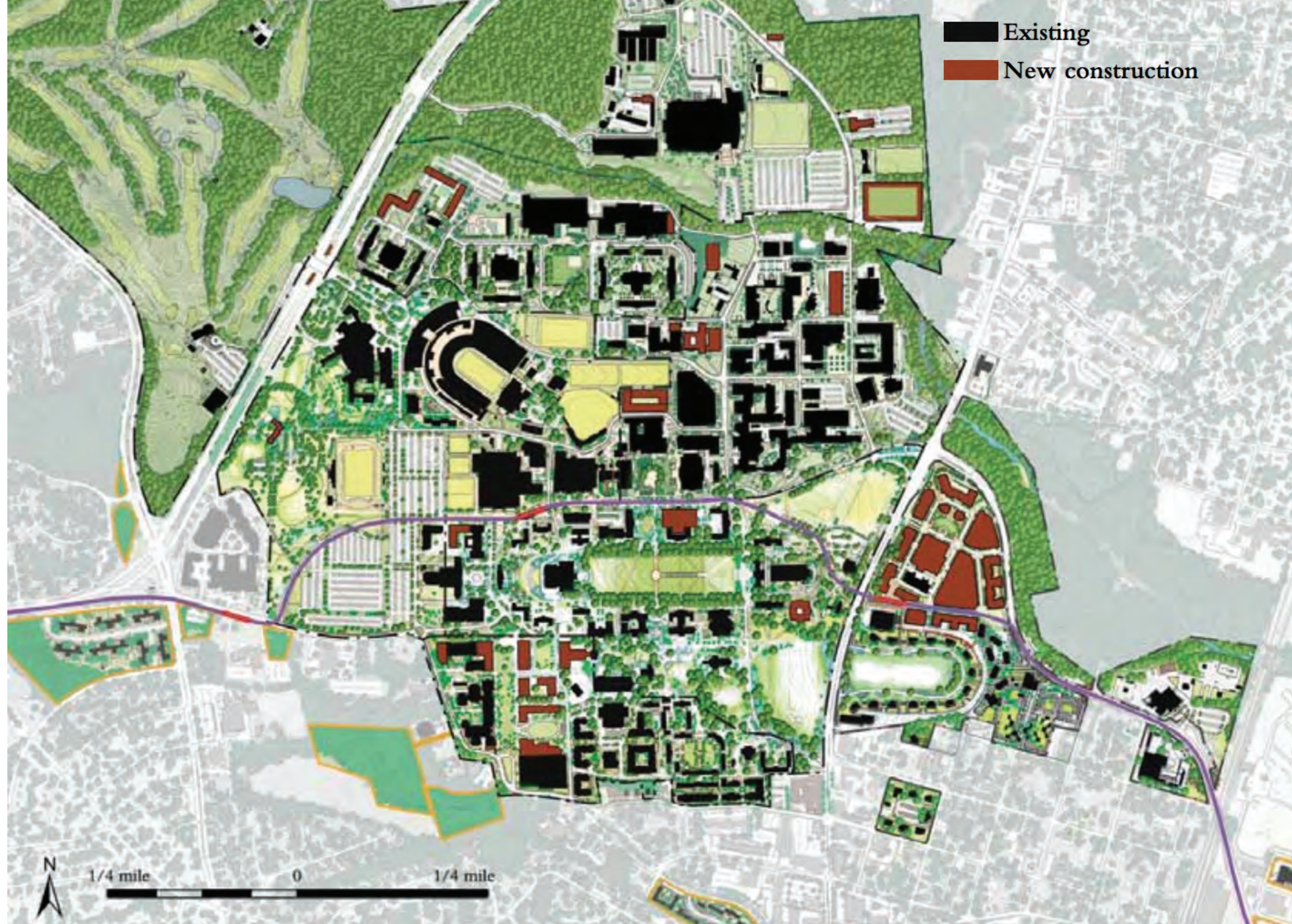
LEARNING ENVIRONMENTS



LEARNING ENVIRONMENTS



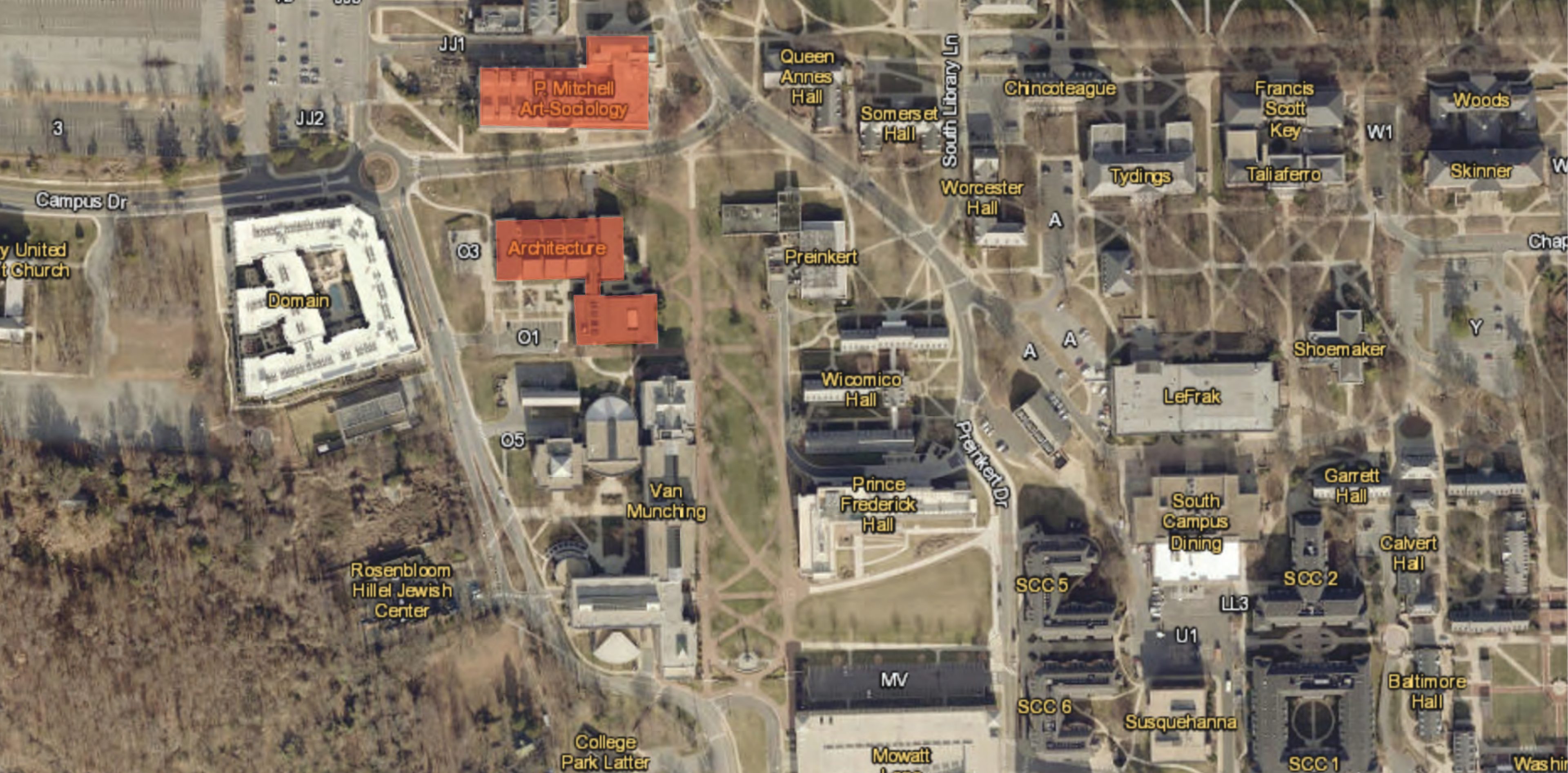
UMD CAMPUS



UMD CAMPUS



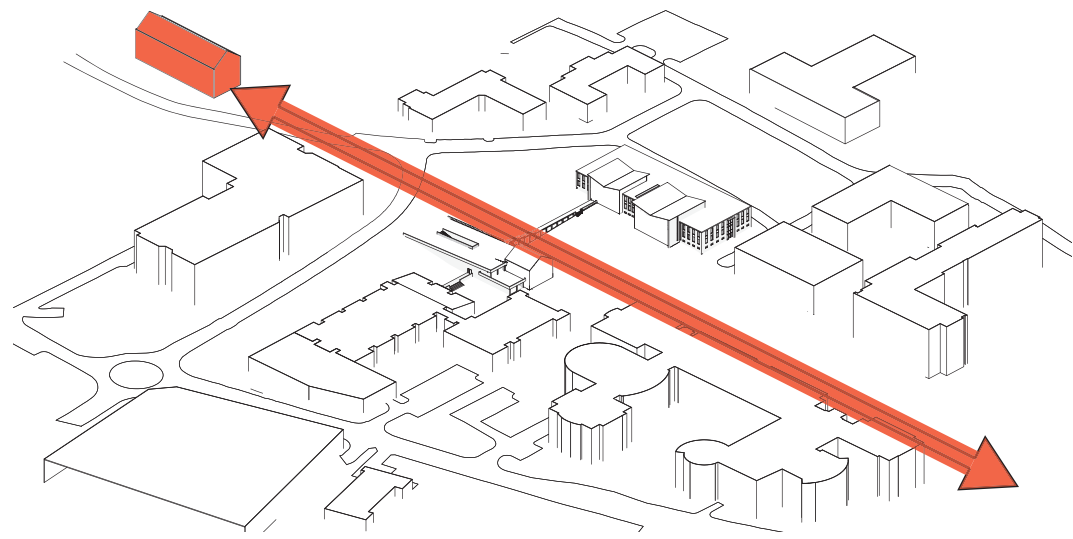
UMD CAMPUS



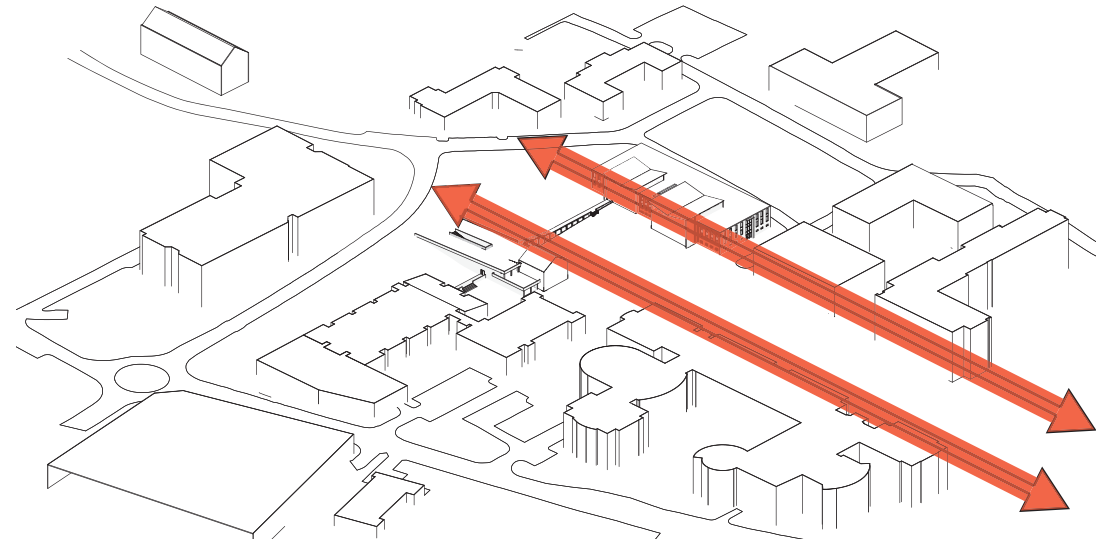
UMD CAMPUS



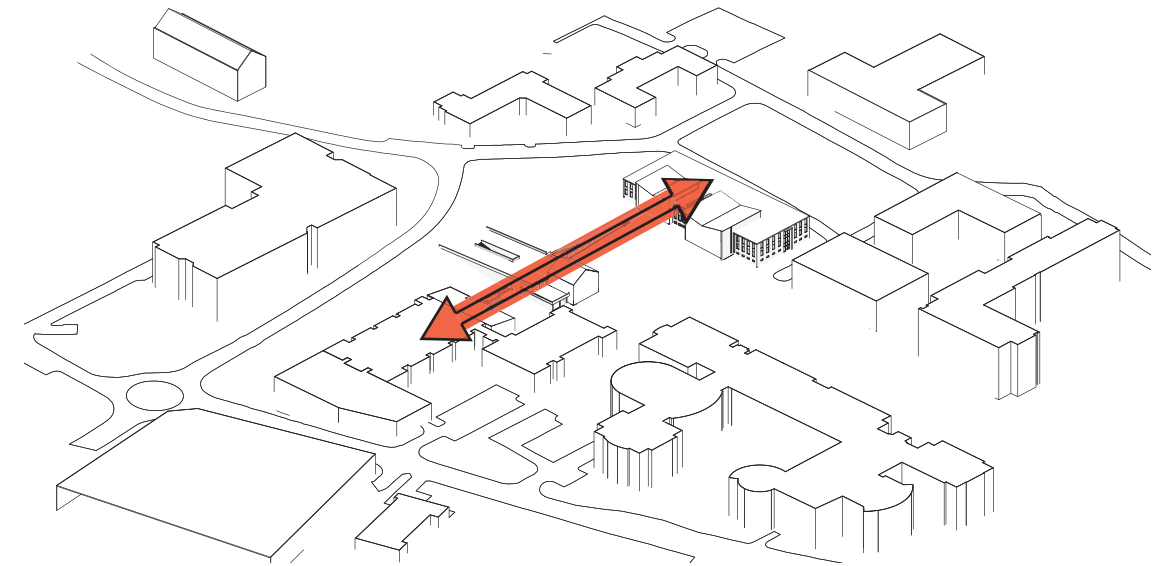
UMD CAMPUS



ANNE ARUNDEL HALL AXIS



MAYER MALL EDGES



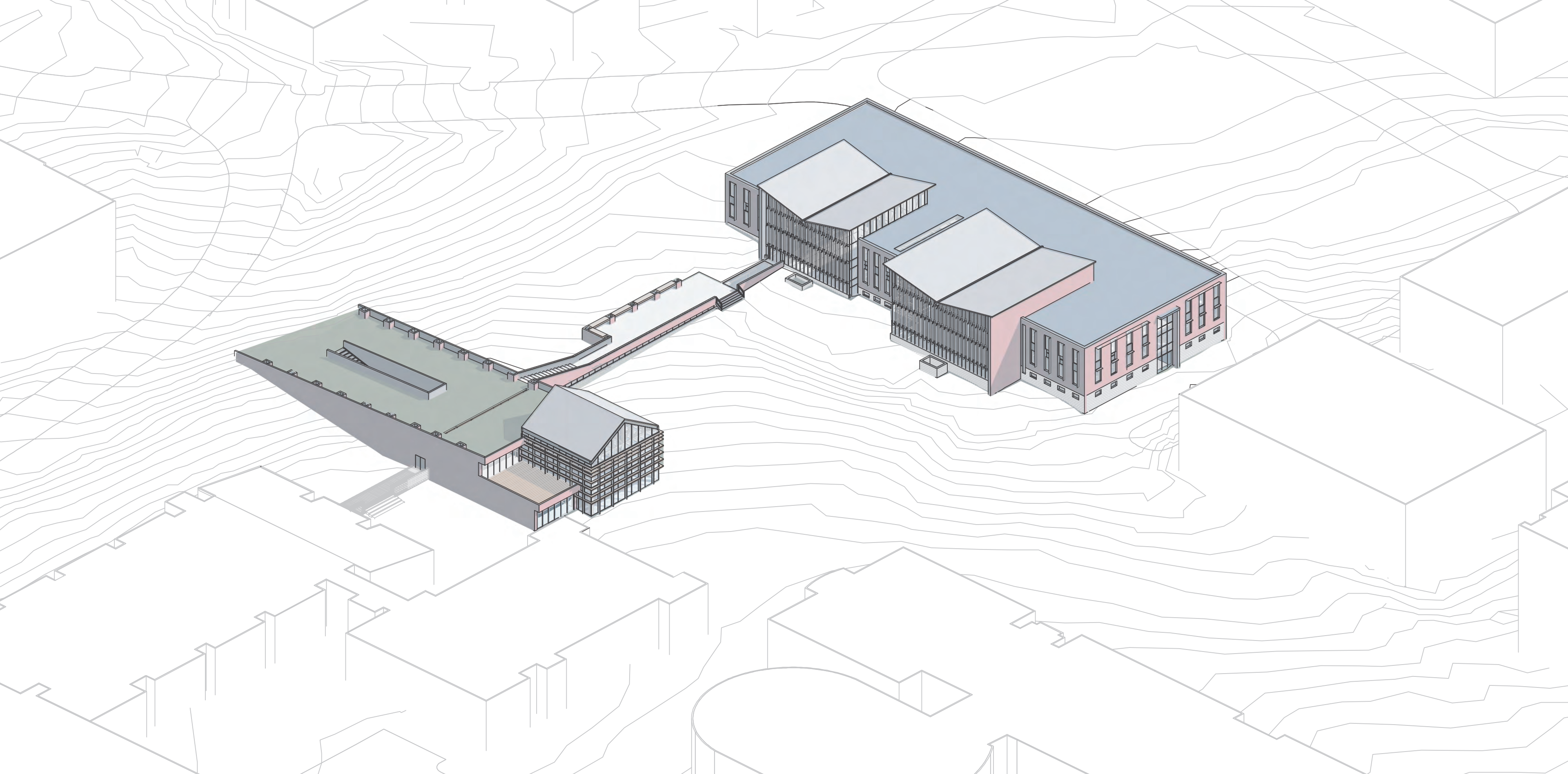
CROSS AXIS CONNECTION



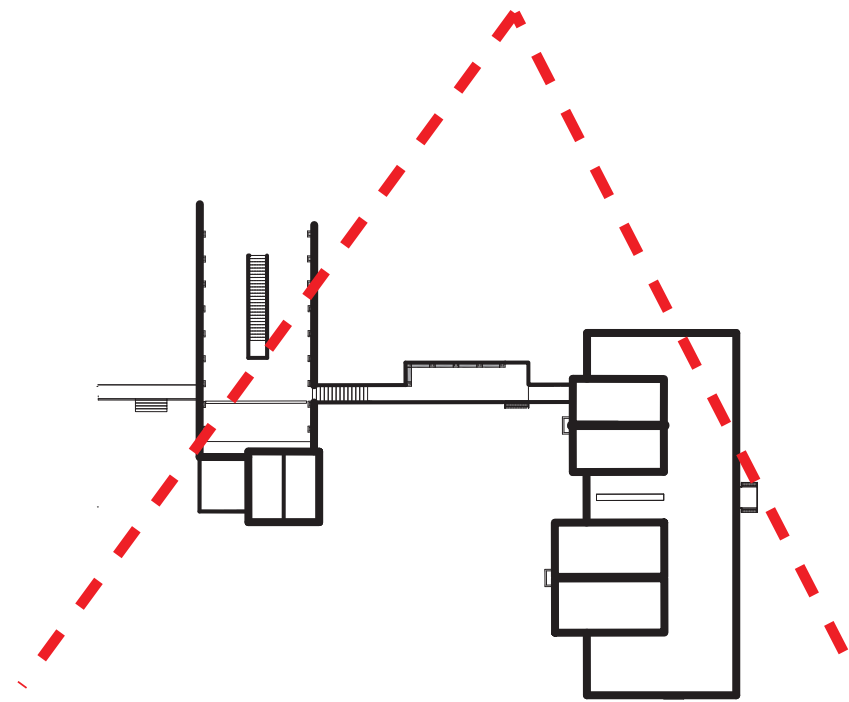
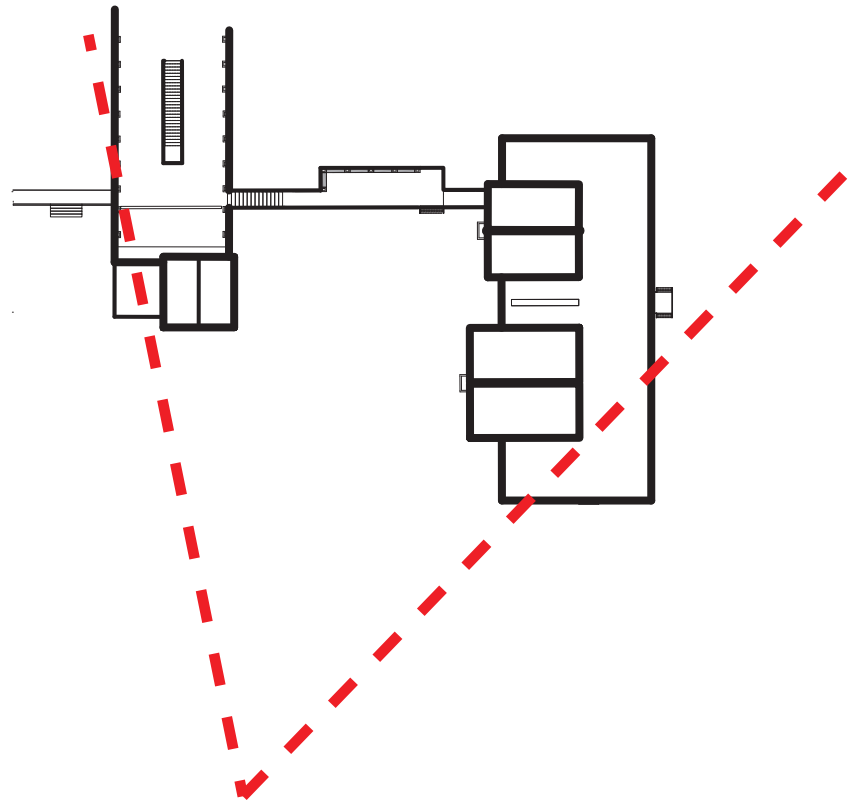
UMD CAMPUS



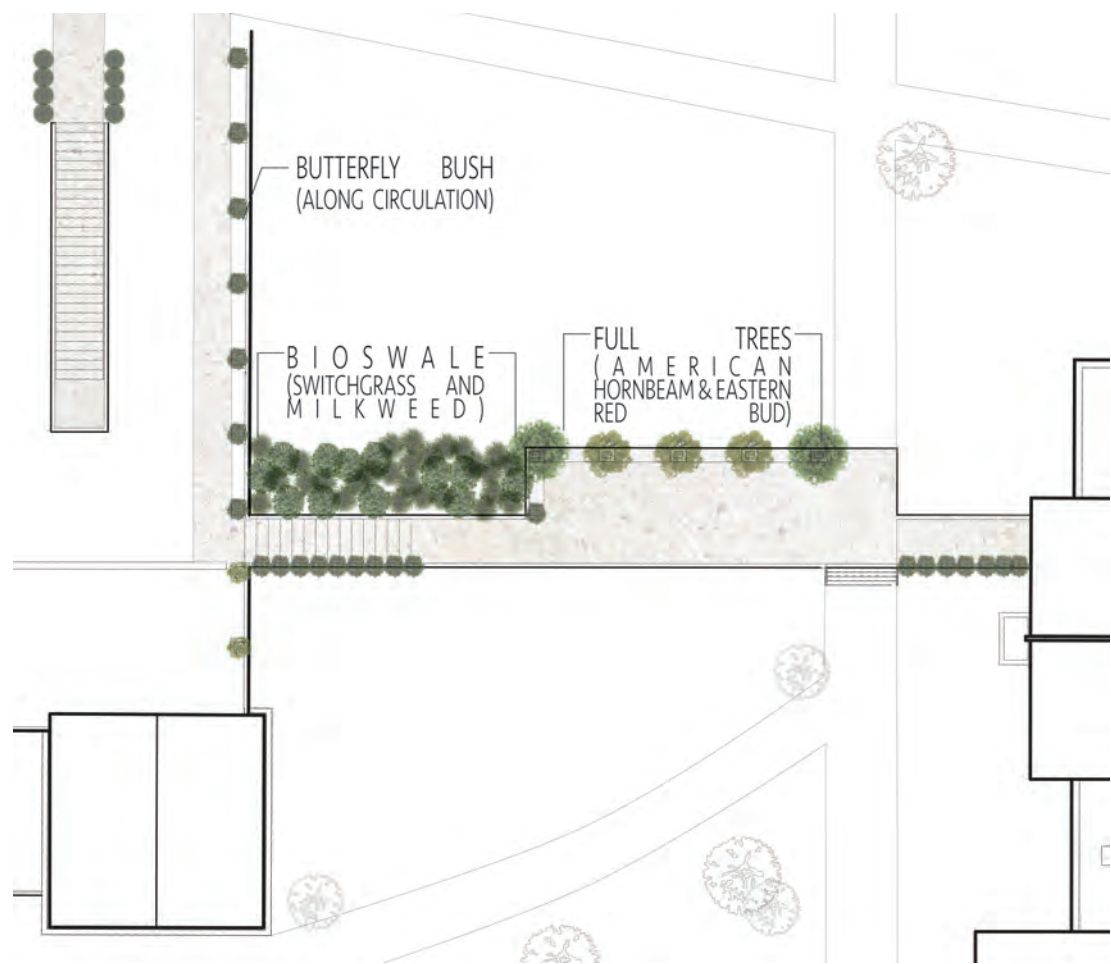
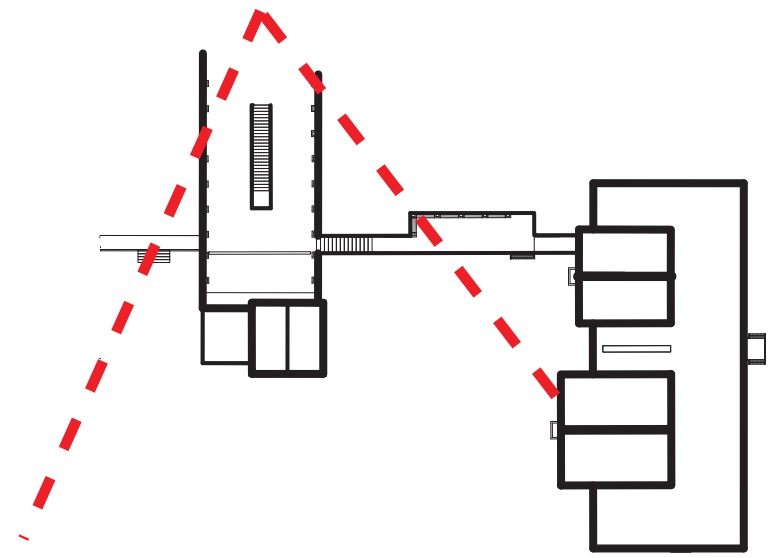
UMD CAMPUS



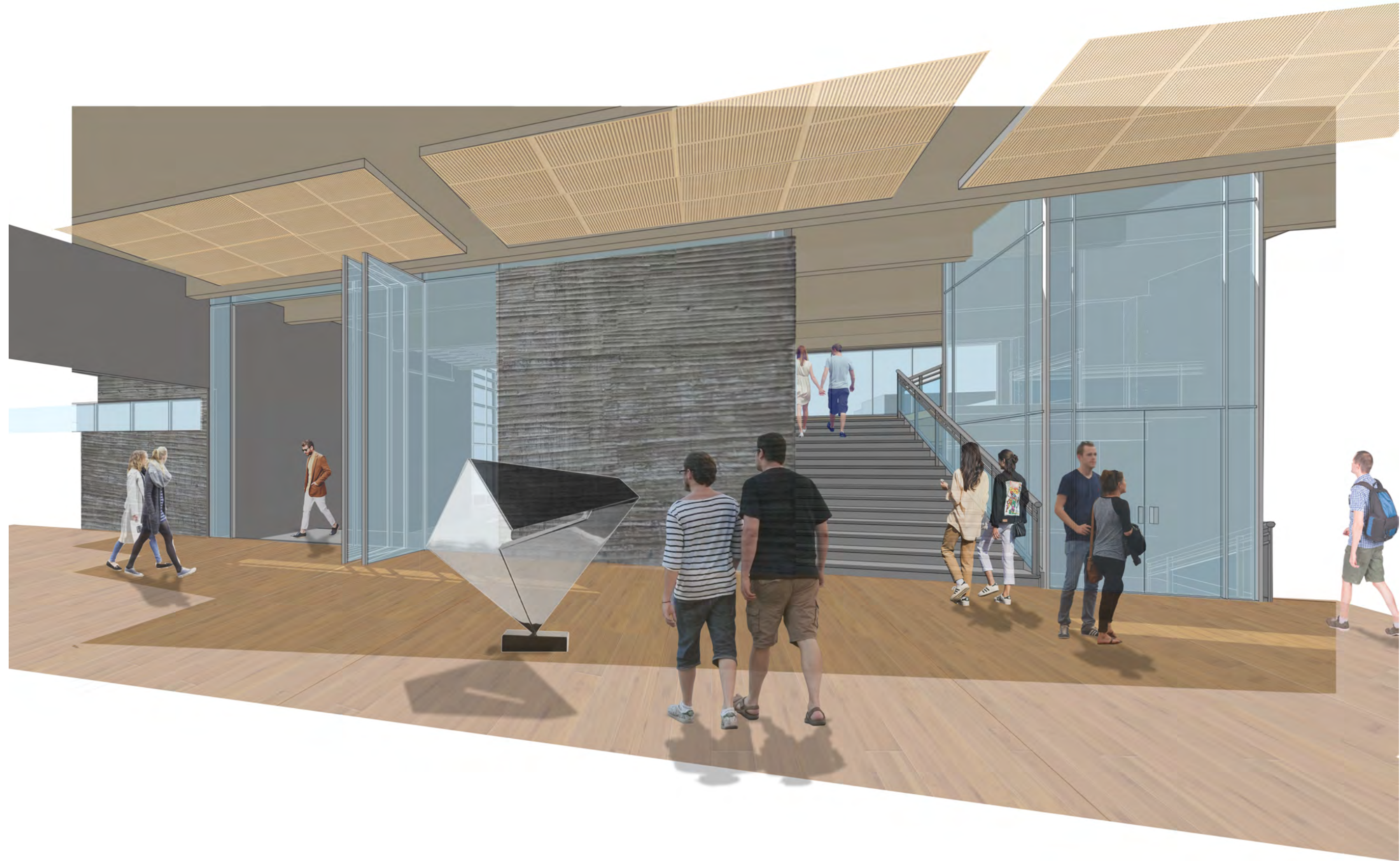
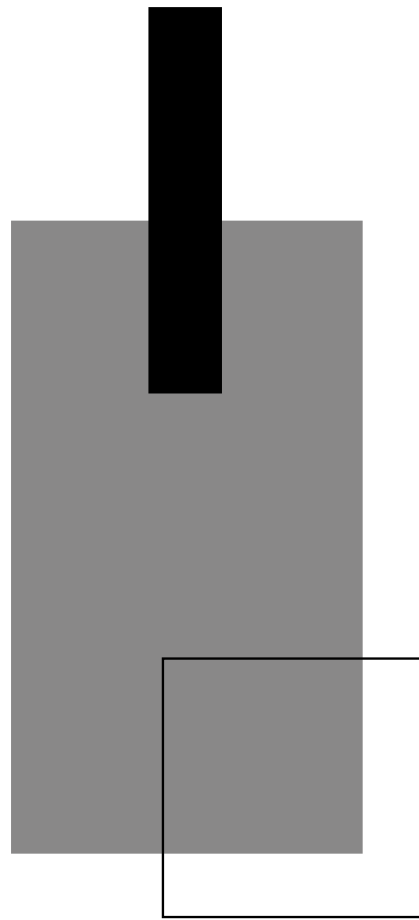
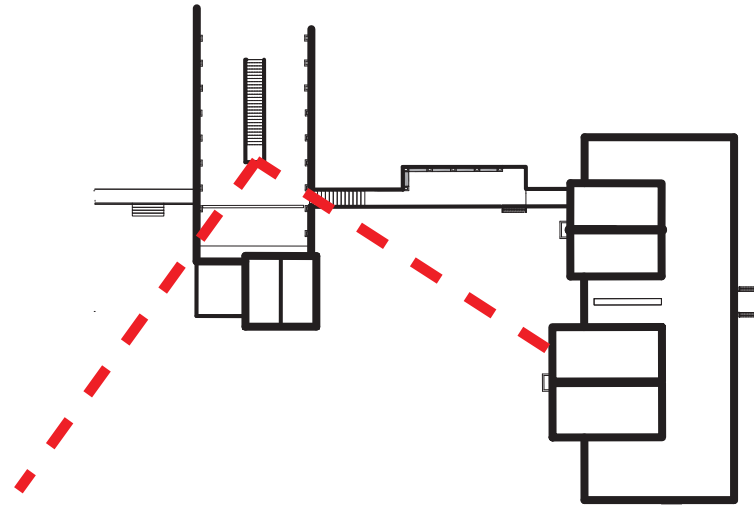
PROPOSAL



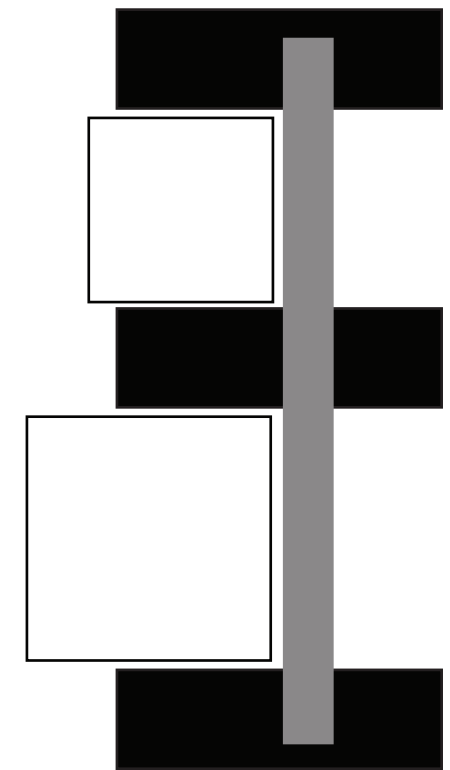
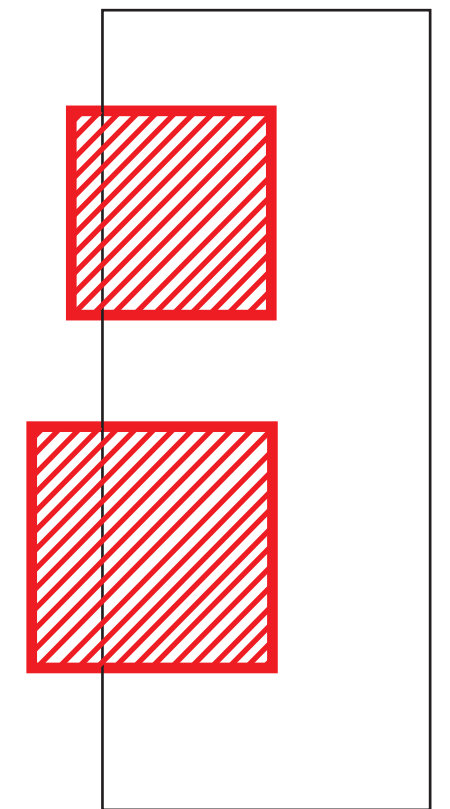
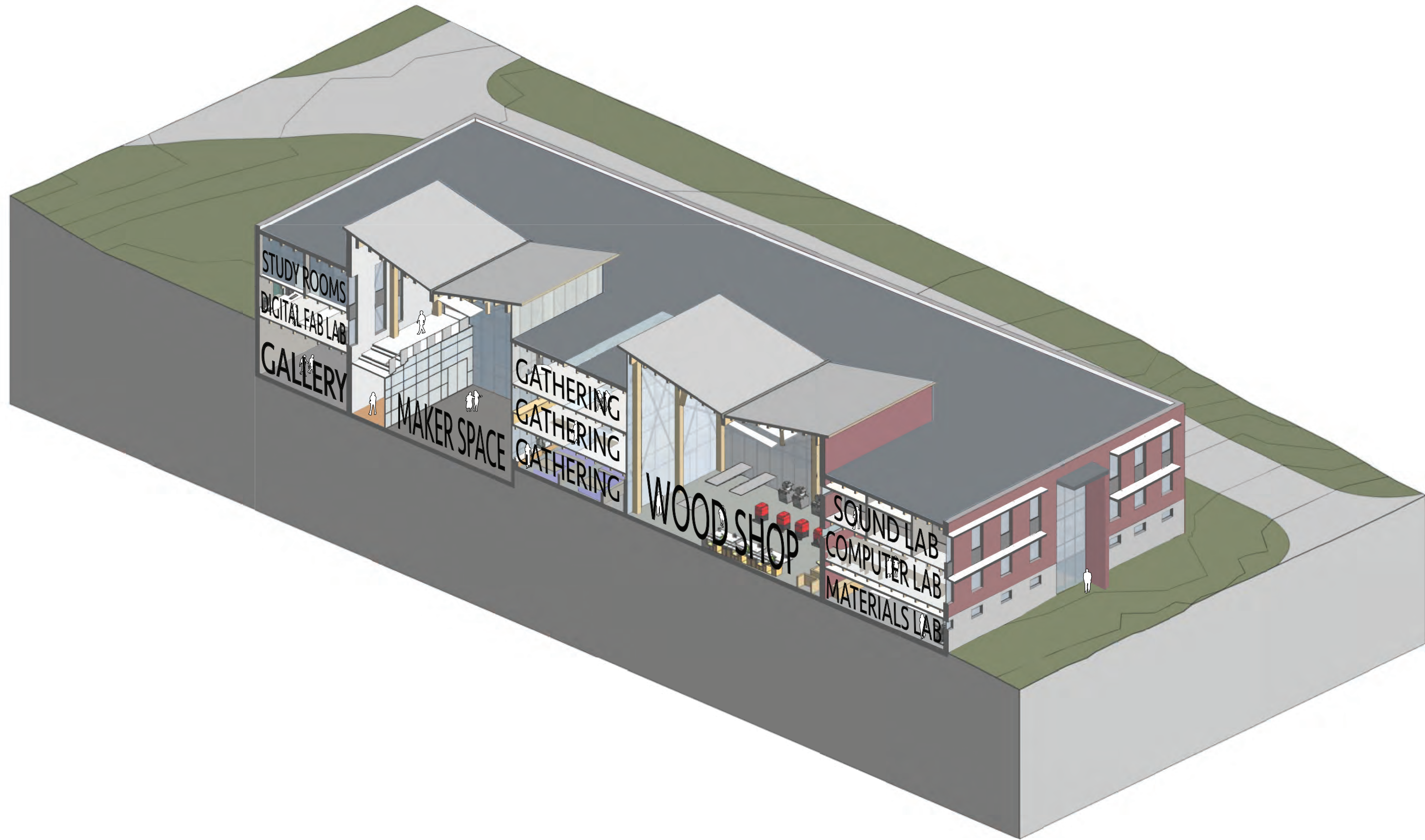
APPROACH



APPROACH

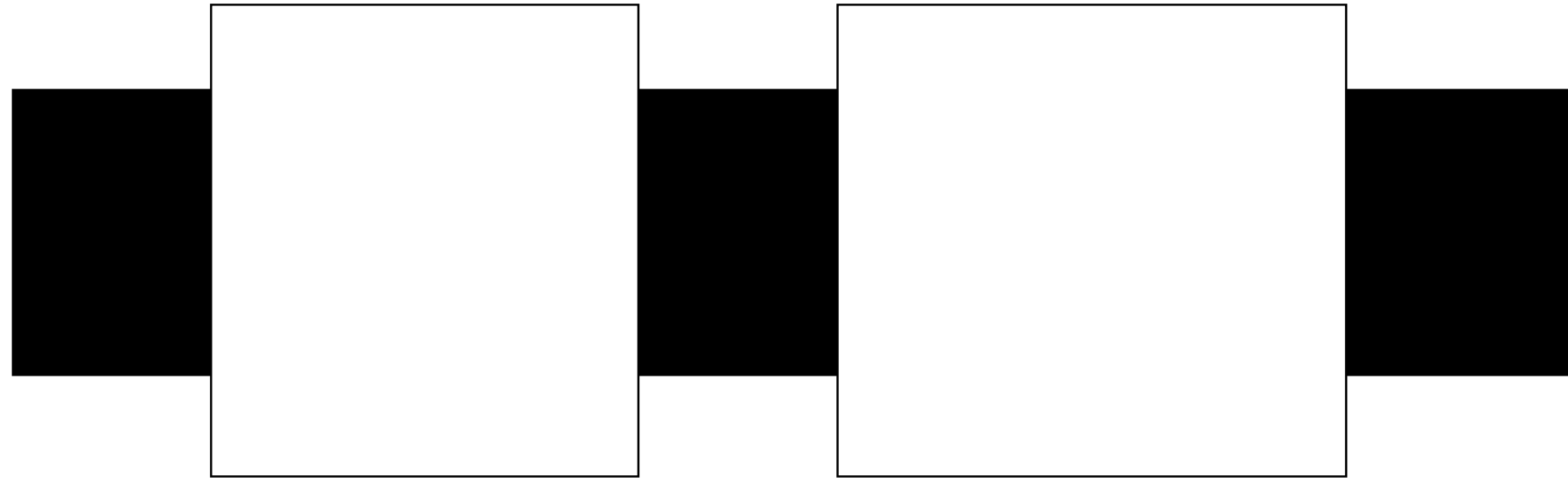


MAKERS PAVILION

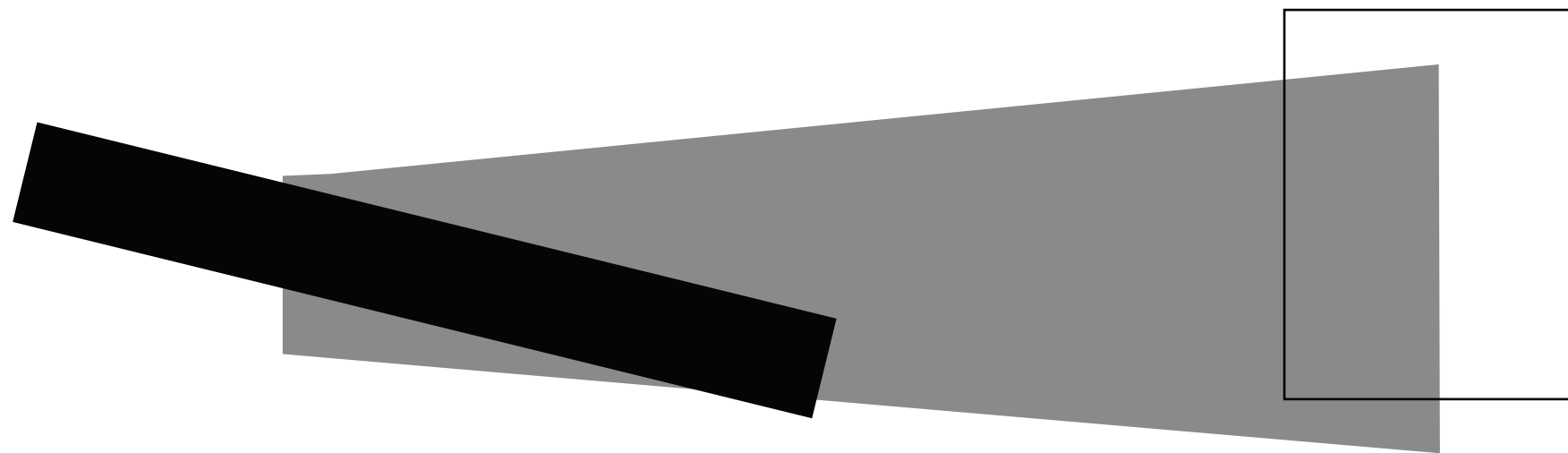


MAKERS BUILDING

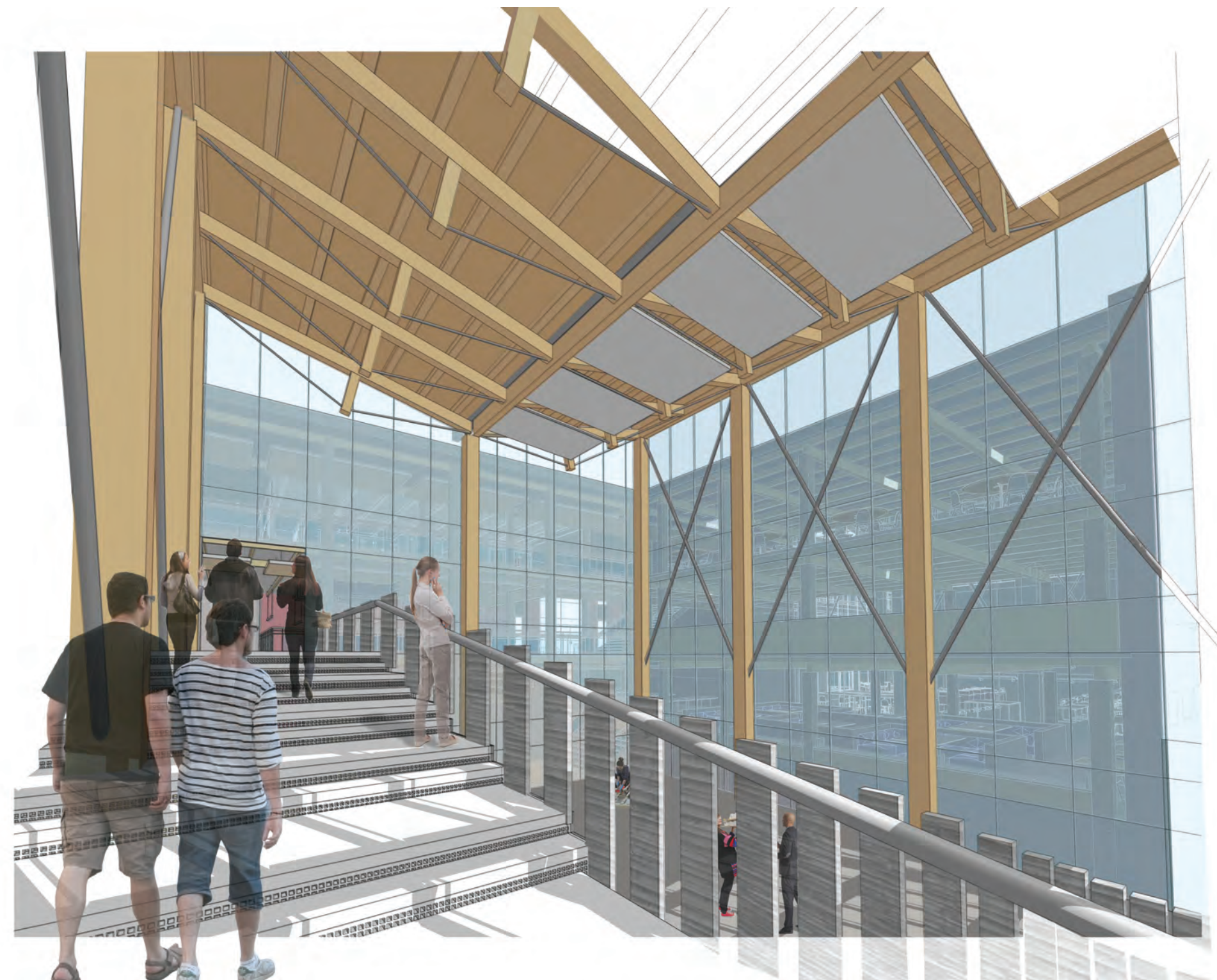
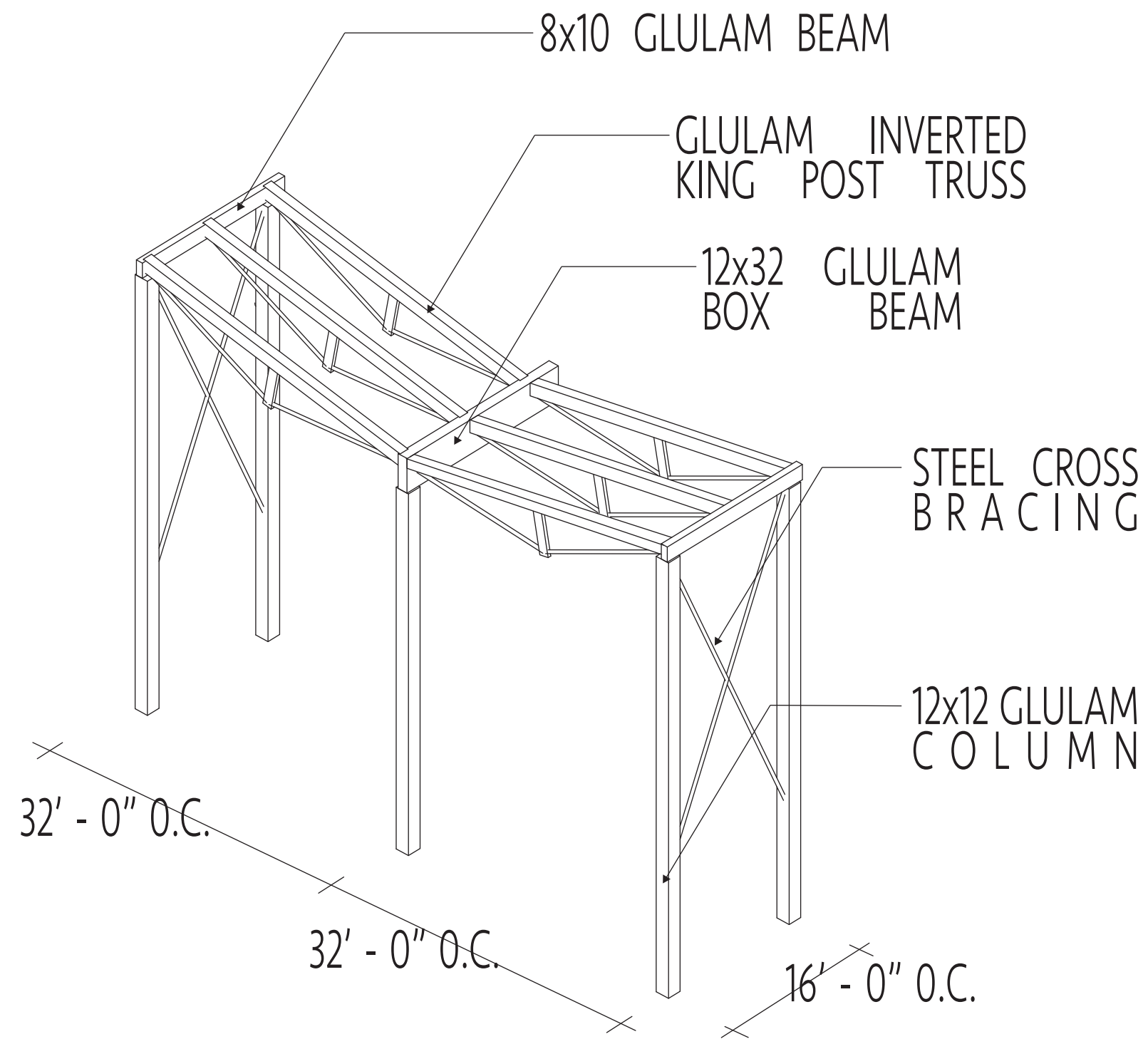
MAKERS BUILDING -



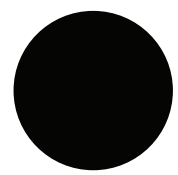
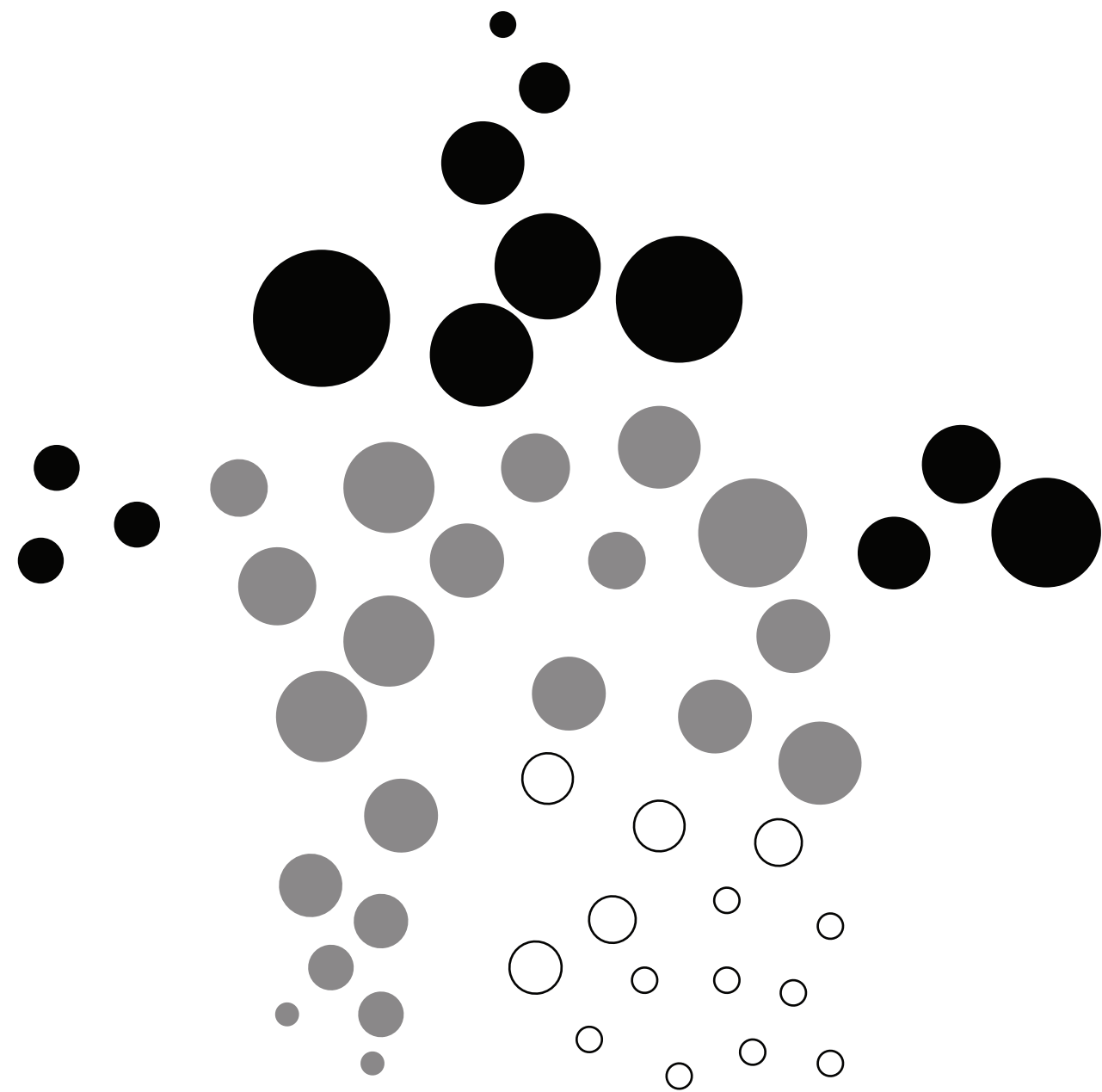
MAKERS PAVILION -



SCALE PERCEPTIONS



STRUCTURAL PERCEPTIONS



HIDDEN



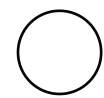
EXPOSED



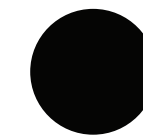
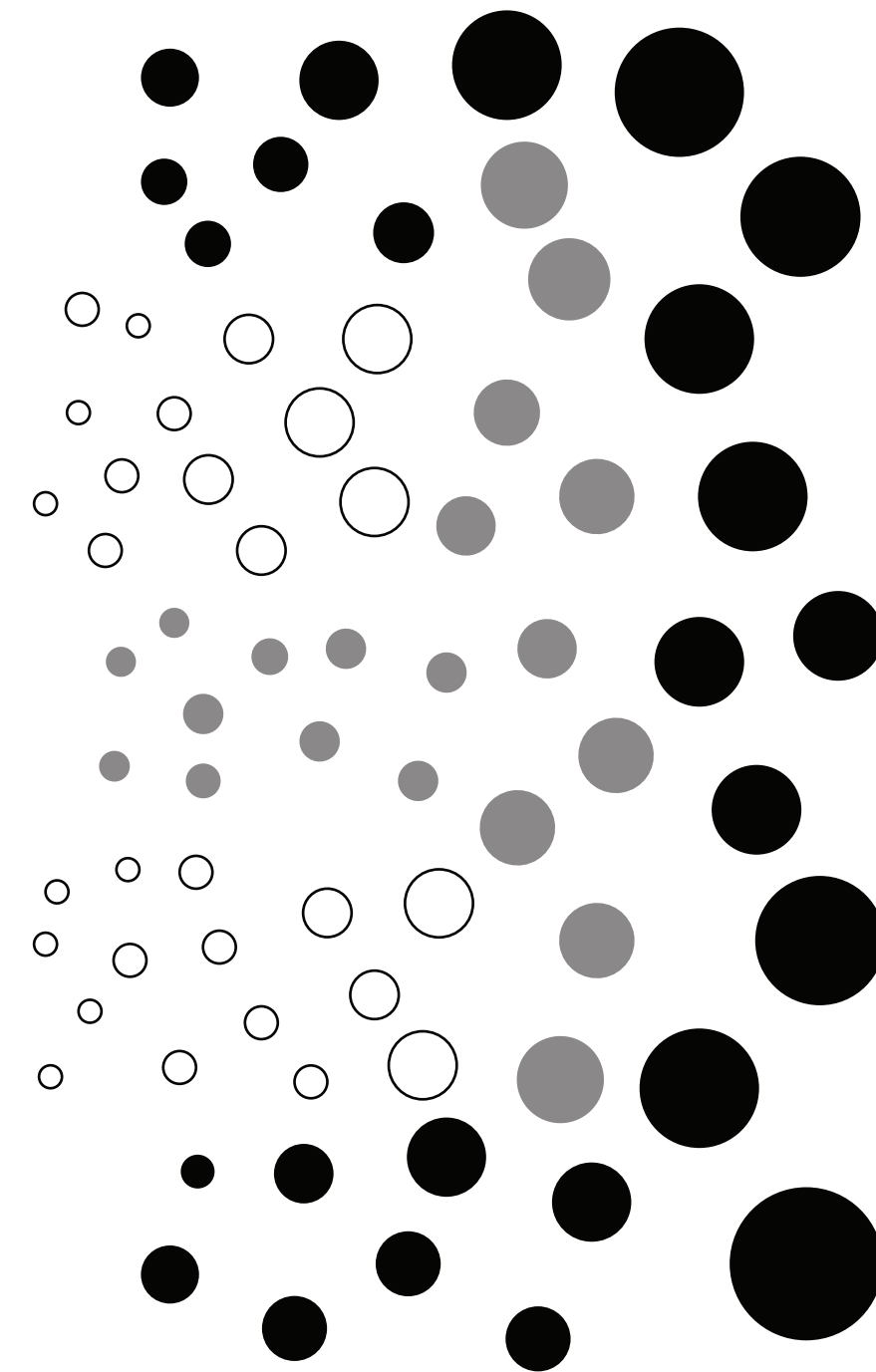
CONCRETE



CONCRETE / WOOD



WOOD



HIDDEN



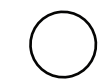
EXPOSED



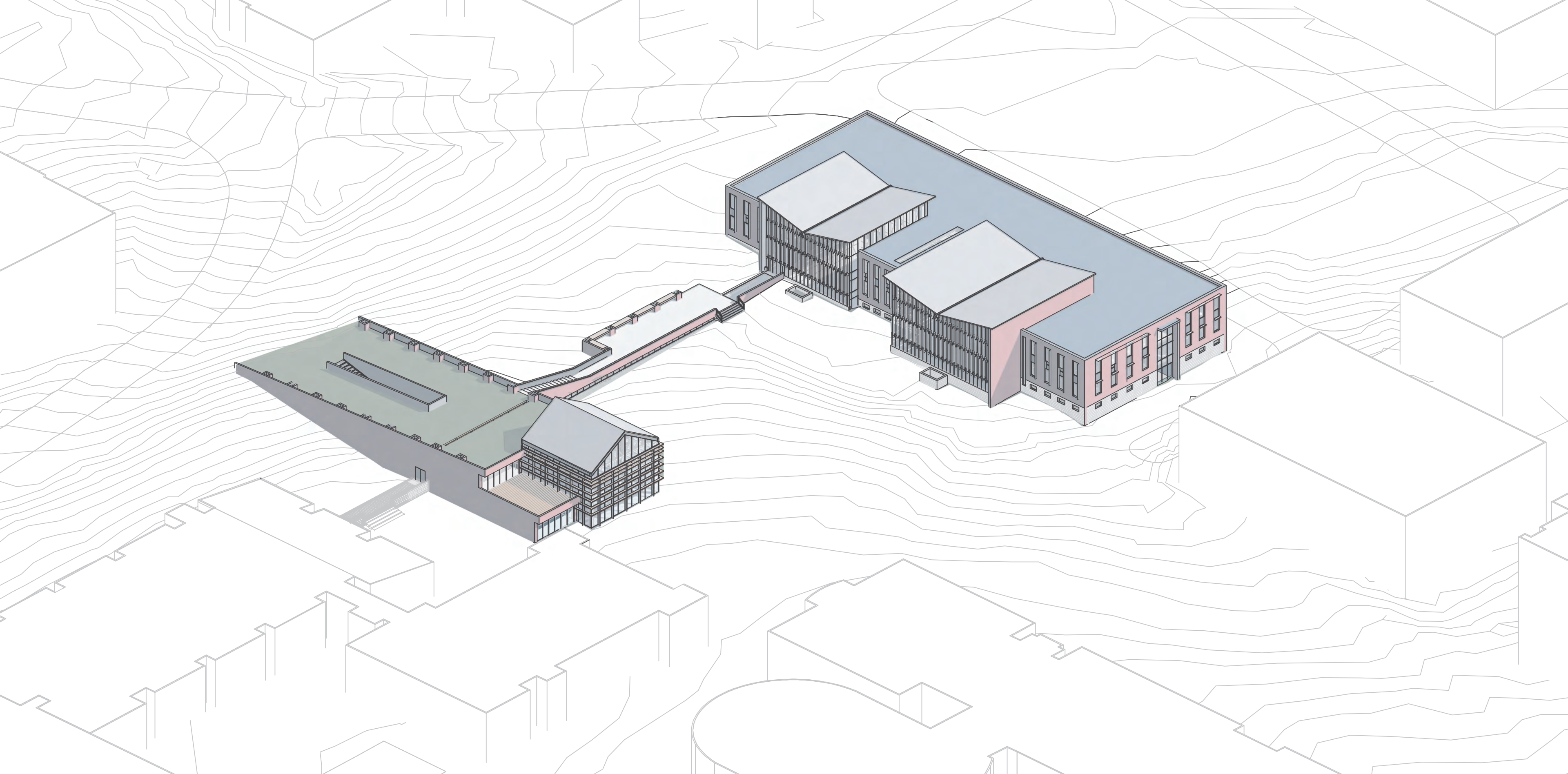
CONCRETE



CONCRETE / WOOD



WOOD



CONCLUSION