

Subcellular Redistribution of NHERF1 in Response to Dehydroepiandrosterone (DHEA) Administration in Endometrial Glands of Wistar Rats

Journal:	<i>Reproductive Sciences</i>
Manuscript ID:	RSCI-12-098.R1
Manuscript Type:	Original Manuscripts
Date Submitted by the Author:	26-Apr-2012
Complete List of Authors:	Kreimann, Erica; National Atomic Energy Commission of Argentina (CNEA), National Research Council of Argentina (CONICET), Department of Radiobiology Cabrini, Rómulo; National Atomic Energy Commission of Argentina (CNEA). Department of Oral Pathology, School of Dentistry, University of Buenos Aires (UBA),
Keyword:	NHERF1, Endometrium, Golgi Apparatus, PCOS
File Designation:	

SCHOLARONE™
Manuscripts

view

1
2
3 **Subcellular Redistribution of NHERF1 in Response to**
4
5
6 **Dehydroepiandrosterone (DHEA) Administration in Endometrial Glands of**
7
8
9 **Wistar Rats**

10
11
12
13
14 **AUTHORS**

15
16
17 **Erica L Kreimann, PhD^{1,2}, Rómulo L Cabrini, MD, PhD^{1,3}**

18
19 ¹Department of Radiobiology, National Atomic Energy Commission of Argentina (CNEA). San
20
21 Martín. Buenos Aires, Argentina, B1650KNA

22
23
24 ²National Research Council of Argentina (CONICET), CABA, Argentina C1033AAJ

25
26
27 ³Department of Oral Pathology, School of Dentistry, University of Buenos Aires (UBA), CABA,
28
29 Argentina C1033AAJ

30
31
32
33 **Acknowledgments**

34
35
36 This work was supported by the National Research Council of Argentina (CONICET), the
37
38 School of Dentistry of the University of Buenos Aires (UBA) and the National Agency for the
39
40 Promotion of Science and Technology of Argentina (AGENCIA-MINCYT) (PICT 0087, 2008).

41
42
43
44
45 Correspondence to: Erica L Kreimann, Ph.D. Department of Radiobiology, National Atomic
46
47 Energy Commission of Argentina (CNEA), National Research Council of Argentina
48
49 (CONICET). Av. General Paz 1499, B1650KNA San Martín. Buenos Aires, Argentina.

50
51
52 Tel: +54 11 6772-7185

53
54
55 Fax: +54 11 6772-7970

56
57 kreimann@cnea.gov.ar, ekreimann@gmail.com

ABSTRACT

To understand the regulation of Na(+)/H(+) exchanger regulatory factor (NHERF1) in polycystic ovarian syndrome (PCOS), we studied the expression of NHERF1 in uterus of Wistar rats injected with (6mg/kg) of dehydroepiandrosterone (DHEA) for 7 and 20 days.

5 Immunohistochemistry analysis of NHERF1 showed a substantial shift in the intracellular localization of NHERF1 in endometrial glands and areas of luminal epithelium as early as 7 days of DHEA administration. NHERF1 accumulated in the “Golgi apparatus area” in virtually all of the glands in the 7-day protocol, and in the majority of the glands of the 20-day protocol. In contrast, NHERF1 is expressed in the apical membrane and slightly in the cytoplasm of the control epithelium. The subcellular redistribution of NHERF1 could affect the sorting of proteins to the apical membrane and the organization of the apical compartment.

KEYWORDS

NHERF1, Endometrium, Golgi Apparatus, PCOS

INTRODUCTION

Polycystic Ovarian Syndrome (PCOS) is one of the most common endocrine disorders in women of reproductive age and affects more than 5% of the population.¹ Though the etiology of PCOS is unclear, some evidence suggests that fetal exposure to high levels of androgens could predispose PCOS in adult life.² PCOS presents itself most commonly as a combination of anovulatory and ovulatory cycles, infertility and hyperandrogenicity and is associated with certain metabolic alterations like obesity, dyslipidemia, insulin resistance and type-2 diabetes, all of which increase the risk of cardiovascular disease.³ It has been proven that both obesity and

1
2
3 diabetes have a negative impact on fertility, indicating the importance of the prevention and
4
5
6 25 treatment of clinical manifestations of PCOS.⁴ The clinical manifestation of PCOS can be
7
8 heterogeneous, and in cases of anovulatory cycles, the morphological changes most
9
10 characteristic of PCOS are the accumulation of large antral follicles attributed to a failure in the
11
12 selection of the dominant follicle and an arrest of development of follicles.^{5,6} The hormonal
13
14 changes and anovulatory cycles in women with PCOS can trigger **hyperplasia** of the uterine
15
16
17 30 endometrium, which not only affects the process of implantation, but also increases endometrial
18
19 cancer risk.⁷ Even though the causes of PCOS are not completely understood, an increasing
20
21 number of chemicals such as bisphenol A (BPA), diethylstilbestrol (DES), etc. are being studied
22
23 in relation to their hormonal actions as endocrine disruptors and their effects in the reproductive
24
25 system and the development of PCOS.⁸ Of the several animal models of PCOS that have been
26
27
28 35 developed such as rats treated with constant light, **dehydroepiandrosterone** (DHEA), testosterone
29
30 propionate, estradiol valerate, letrozole, mifepristone (RU486), human chorionic gonadotropin
31
32 (Hcg) (hypothyroid rats) many showed some but not all of the alterations found in the human
33
34 syndrome.^{9, 10} The rat model of PCOS by administration of DHEA was first developed by Roy
35
36 et al. in 1962 after the observation of an abnormal accumulation of this androgen in ovaries from
37
38
39 40 women with PCOS.¹¹ This early report showed that the treatment with of 6 mg/100 g or higher
41
42 doses of DHEA in immature rats produces changes in ovarian and uterine weight and follicular
43
44 cyst formation. A cystic follicle is a large cyst filled with fluid with an attenuated granulosa cell
45
46 layer and thickened theca internal cell layer.^{12, 13}

47
48
49
50 The function of the Na(+)/H(+) exchanger regulatory factor (NHERF1) protein in uterine
51
52
53 45 physiology and its regulation has only recently begun to be studied, and its role in the alterations
54
55 of the uterine epithelium found in pathological conditions like PCOS, insulin resistance and
56
57
58
59
60

1
2
3 endometrial cancer remains unknown. NHERF1 protein is an adaptor molecule expressed
4 primarily in the plasma membrane of polarized epithelia where signals connect the membrane
5
6 with the cytoskeleton. NHERF1 participates in the organization of microvilli of polarized
7
8
9
10
11 50 epitheliums; it regulates the activity of ion channels, growth factor receptors and the endocytic
12
13 machinery.¹⁴⁻¹⁶ In MCF-7 breast cancer cells, NHERF1 expression is regulated at the
14
15 transcriptional level by estrogens, but not by other sexual steroids such as 5-dihydrotestosterone,
16
17 testosterone or the progestin R5020.¹⁷ Estrogens regulate gene expression by direct binding of
18
19 the estrogen receptor to DNA palindromic consensus sequences of 13 base pairs called estrogen
20
21
22 55 receptor elements or EREs. The consequent recruitment of transcriptional co-regulators
23
24 determines the nature of the effect that could activate or inhibit gene transcription. NHERF1
25
26 expression is regulated by estrogens in human endometrium, where it is highly expressed in the
27
28 proliferative phase of the menstrual cycle.¹⁸ It was also characterized during the estrous cycle
29
30
31 of Wistar rats, where the expression of NHERF1 was detected in all stages of the estral cycle in
32
33
34 60 the apical and cytoplasm compartment, luminal membrane of glandular epithelium and scattered
35
36 stromal cells.¹⁹

37
38
39
40
41 In polarized epitheliums, such as the endometrial-gland and luminal uterine epithelial cells, the
42
43 asymmetrical distribution of lipids and proteins is maintained by the constant activity of the
44
45
46 65 secretory and endocytic pathway.²⁰ The Golgi complex is the site of modification, classification
47
48 and transport of glycoprotein and glycolipids to their final destination within the cells such as
49
50
51 organelles or specific cell surfaces like the apical or basolateral membrane. It is also the place of
52
53
54 synthesis for the majority of polysaccharides, such as glycosaminoglycans, which constitute the
55
56
57 extracellular matrix of animal cells. It had been widely accepted that, in the trans-golgi network
58
59
60

1
2
3 70 (TGN), proteins are classified according to their specific sorting signals, and they are targeted to
4
5 different cell destinations.²¹ However, recent reports support the notion that the sorting capacity
6
7 is not exclusively of the TGN, rather it can occur in every step of the secretory pathway,
8
9 introducing a new level of complexity to the currently puzzle of apical sorting signals.²² A
10
11 potential function of NHERF1 in the secretory pathway has started to be revealed. It was
12
13 proposed that NHERF1 could influence the β -catenin/E-cadherin complex assembly and
14
15 75 trafficking from the endoplasmic reticulum (ER) to the plasma membrane.²³ In MDCK renal
16
17 epithelial cells, NHERF1 localization at the Golgi apparatus was required for the binding,
18
19 oligomerization and sorting of the Podocalyxin/Gp135 protein to the apical membrane.²⁴ The
20
21 association of NHERF1 to the Golgi apparatus opens a new paradigm, because NHERF1 is an
22
23
24
25
26
27 80 adaptor protein that was traditionally associated with the submembrane cortical region.
28
29
30
31

32 The knowledge of the regulation of NHERF1 in uterus by hormones and endocrine disruptors
33
34 could have very important implications in the basic understanding of uterine epithelial
35
36 physiology, and have a direct impact in problems with fertility and cancer associated with
37
38
39 85 metabolic disorders like PCOS. NHERF1 is an estrogen-regulated protein that has been
40
41 implicated in uterine physiology and implantation, but the alteration of its expression in a
42
43 complex hormonal context such as PCOS has never been explored. We believe that our results
44
45 will help to understand how downstream action of estrogenic signals could be affected in this
46
47 syndrome. Therefore, here we have studied the expression of NHERF1 in a rat model of PCOS
48
49
50
51 90 induced by DHEA in order to contribute to the basic understanding of the cellular alterations that
52
53 underlie the pathology of PCOS.
54
55
56
57
58
59
60

MATERIALS AND METHODS

Animals and treatments

95 A group of 31 immature Wistar rats (22 day-old) weighing 35-40 grams was housed with a controlled temperature and light/dark cycle (lights on 6:00 AM to 8:00 PM) we included in the study. Rat chow (Gilardoni, Buenos Aires, Argentina) and tap water were available ad libitum. For the induction of the PCOS condition, a group of rats was injected daily with 6mg/100g b.w. of **dehydroepiandrosterone** (DHEA) (Sigma) diluted in sesame oil, and control rats were injected with vehicle. We performed two experimental protocols: one group of rats was injected with DHEA for 7 days, and another group was injected for 20 days. Rats in the 7-day protocol are considered immature (29 days old at the end of the treatment) where rats in the 20-day protocol had started the estrous cycle (43 days old at the end of the protocol). After treatment, the rats were anesthetized under a mixture of ketamine-xylazine anesthesia and euthanized. Samples of liver, kidney, uterus, and ovaries were collected. The whole ovary and uterus from the 20-day protocol rats were weighed. The ovary and medial sections of the uterus' horns were fixed immediately in PBS-buffered 10% formalin for 24 hours and processed for histological analysis. Animal maintenance and handling was performed according to the NIH guide for the Care and Use of Laboratory Animals (NIH publication N8 86-23, revised 1985 and 1991), the UK requirements for ethics of animal experimentation (Animals Scientific Procedures, Act 1986) and the ethics guidelines suggested by the Argentinean Association of Science and Laboratory Animals (AACTyTAL).

Histological analysis

1
2
3 115 After fixation, tissues were dehydrated and embedded in Histoplast Biopack (Buenos Aires,
4
5 Argentina). Tissue sections (5 μm) were placed in 3-aminopropyltriethoxysilane (Sigma-Aldrich,
6
7 St. Louis, MO, USA) coated slides and stained with hematoxylin-eosin for histopathological
8
9 studies. Ovarian sections from control, 7-day and 20-day protocol were analyzed for the presence
10
11 of follicles in different stages of folliculogenesis such as secondary (pre-antral), tertiary (antral),
12
13 preovulatory (graafian) follicles, cystic follicles and corpus luteum. H&E slides from uterus were
14
15 120 analyzed by a pathologist to describe epithelial morphology in control and DHEA injected rats.
16
17 The diameter of the uterus was measured by analyzing the digital pictures of transversal uterine
18
19 sections captured with a x4 objective (x40 total magnification) with an Olympus BX51
20
21 microscope coupled with an Olympus DP70 camera. Images were analyzed with the Image J
22
23 program, and the diameter of the uterus and the height of the uterine epithelium (at x400
24
25 magnification) was calculated by establishing the correlation between pixels and μm using the
26
27 125 calibrated scale bar at each magnification. Only uterine sections in the right transversal
28
29 orientation were considered for quantification. The height of the uterine epithelium was
30
31 measured in μm (10-20 fields/uterine section) from control and treated rats. The diameter of the
32
33 largest follicle was measured as described above in control and treated rats from the 20-day
34
35 130 protocol.
36
37
38
39
40
41
42
43
44
45

46 Immunohistochemistry and Immunofluorescence

47
48 Rabbit anti-NHERF1 polyclonal antibody was obtained from Affinity BioReagents (Rockford,
49
50 IL, USA), mouse anti-TGN38 antibody from BD Transduction Laboratories (San Jose,
51
52 135 California, USA). Unstained sections were used for immunohistochemistry analysis using two
53
54 kits. The Vectastain Universal Elite ABC KIT, previous blocking of the samples with
55
56
57
58
59
60

1
2
3 Avidin/Biotin blocking reagent (Vector Laboratories, Inc., Burlingame, CA, USA) and the
4
5 polymer based detection system NovoLink™ Min Polymer Detection System (cat. RE7290-K,
6
7
8 140 Bioars, Buenos Aires, Argentina) were used according to manufacturers instructions. The
9
10 experiment was repeated three times. We counted the amount of total glands per uterine section,
11
12 and we classified the NHERF1 label in each gland as: apical/citoplasmic or supranuclear/golgi
13
14 area staining. The total number of fields analyzed corresponds to the quantification of glands in
15
16 2 consecutive sections/rat from the 7-day protocol and 4 consecutive sections from the 20-day
17
18 protocol from 4-7 rats per group. The immunofluorescence protocol was performed in sections
19
20 145 of paraffin embedded tissues. Briefly, the tissue slides were deparaffinized by heating them in
21
22 an oven at 60 degrees for 30 minutes, cooled down and placed three times in xylene for 5
23
24 minutes. The slides were then hydrated twice in 100% ethanol, once in 95% and 70% ethanol
25
26 and transferred to ddH₂O. For antigen retrieval, the slides were incubated for 20 min in boiling
27
28 citrate buffer in a steamer, cooled for 10 min, rinsed 3 times (5 minutes each) with ddH₂O and
29
30 150 transferred to PBS. Unspecific binding was avoided by incubation with blocking solution for 20
31
32 minutes (Vector Laboratories, Inc., Burlingame, CA, USA) followed by incubation with primary
33
34 antibody diluted in PBS in a humidified chamber overnight. The slides were then washed 3 times
35
36 with PBS for 5 min, incubated with a FITC anti-mouse IgG secondary antibody for 30 min,
37
38 rinsed 3 times with PBS for 5 min and mounted with Vectashield -DAPI aqueous solution
39
40 155 medium (Vector Laboratories, Inc., Burlingame, CA, USA).
41
42
43
44
45
46
47
48
49
50

51 Statistical Analysis

52
53 The differences between control and DHEA injected groups were compared using the GraphPad
54
55 160 Prism 5 program (GraphPad Software, Inc. La Jolla, CA, USA) using an unpaired *t* test.
56
57
58
59
60

RESULTS

Morphological and histological changes in uterus and ovaries after DHEA administration

165 Here we induced a PCOS condition in 22 day-old Wistar rats that were treated for 7 and 20 days
170 by a daily subcutaneous administration of DHEA (6mg/kg), and we observed substantial changes
in tissue and cell architecture as early as 7 days of DHEA injection. Taking into consideration
that most of the studies of PCOS induction have been characterized in Sprague Dawley rats and
mice, we analyzed the morphological and histological changes observed in our experimental
conditions.^{25, 26} Consistent with previous reports, the administration of DHEA to 22 day-old rats
had a significant effect in the morphology and histology of the uterus. Rats treated with DHEA
for 7 days displayed ovaries that were larger than controls (Fig. 1A-B) with accumulation of
tertiary follicles; some of them presenting oocyte fragmentation and atresia, as previously
described.²⁶ In the ovaries of rats treated for 20 days with DHEA, several follicular cysts
175 occupied most of the ovary, and they showed a decreased granulosa cell wall and cellular debris
in the cyst cavity. All of the control ovaries contained corpora lutea consistent with a normal
reproductive cycle (Fig. 1C-D). Uteri of DHEA-treated rats for 7 days were enlarged and
underwent morphological changes in the uterine epithelial cells. Uterus of control animals
showed a conserved cuboidal epithelium (Fig. 1E-F). The uterus of the 20-day DHEA-treated
180 group showed an alteration of the epithelial layer with cell vacuolization, nuclear hyperchromatism
and areas of [hyperplasia](#). Two rats presented a more severe phenotype with areas of epithelial
dysplasia (Fig. 1G-H). In order to quantify the changes observed in the uterus, pictures of tissue
sections were captured and analyzed with Image J software. Uteri from 7-day DHEA treatment

1
2
3 showed a significant increase in the uterine diameter (mean \pm SD) 1.52 ± 0.15 mm compared to
4
5
6 185 controls 1.15 ± 0.14 mm ($p=0.0041$) and the height of the epithelial cells 29.68 ± 9.87 μ m
7
8 compared to control uterus 14.90 ± 1.08 μ m ($P < 0.05$) (Fig. 2A and B). In rats treated for 20
9
10 days with DHEA, we observed a significant change in ovarian and uterine weights. Ovaries from
11
12 treated rats were smaller 19.85 ± 4.44 mg vs. controls 36 ± 7.35 mg ($p=0.0094$), whereas the
13
14 uteri were heavier than controls, 276.7 ± 36.1 mg vs. 196.5 ± 51.0 mg ($p < 0.05$) (Fig. 2C and D).
15
16
17
18 190 The diameter of the largest follicle in 20-day treated rats was significantly larger 649.3 ± 57.9
19
20 μ m compared to the control rats 522.2 ± 48.2 μ m ($p < 0.05$).
21
22
23
24
25

26 NHERF1 expression in uteri of normal and DHEA-treated rats

27
28 In the uterine epithelia, we found a substantial change in NHERF1 subcellular localization after
29
30
31 195 the induction of an experimental PCOS condition in immature Wistar rats. The
32
33 immunohistochemistry analyses were confirmed using two detection systems as it was described
34
35 in materials and methods. Samples of kidney and liver, [from vehicle injected animals](#), were
36
37 included as control tissues where NHERF1 expression has been previously well characterized
38
39 (Fig. 3. A-B).^{15, 27} We analyzed uterine tissue sections from control and treated rats, and we
40
41
42 200 found that, in the controls, NHERF1 is expressed in the apical membrane and slightly in the
43
44 cytoplasm of the glandular and luminal epithelial cells in both protocols. Our more striking and
45
46 consistent finding in both the 7-day and 20-day protocol was the substantial shift in the
47
48 intracellular localization of NHERF1 to the supranuclear region or “Golgi apparatus area” in the
49
50 uterine glands and in a lesser degree in the luminal epithelial cells as a result of DHEA
51
52
53
54 205 administration (Fig. 3C-H). [Parallel uterine tissues were stained by immunofluorescence with a](#)
55
56 [specific Golgi marker antibody \(TGN38\)](#). The analysis showed a similar distribution pattern for
57
58
59
60

1
2
3 the Golgi marker protein and NHERF1 (Fig. 3I-J). For each gland, we classified the expression
4
5 of NHERF1 in the apical/cytoplasmic or supranuclear/golgi area, and we counted the total
6
7 number of glands/section in consecutive tissue sections of control and treated rats. We noticed
8
9
10 210 that the staining was homogeneous for all the cells in the gland, and that they were all in the
11
12 apical/citoplasmic or supranuclear/golgi area. The average amount of glands per section in the 7-
13
14 day protocol was similar between control group 4.5 ± 1.5 and DHEA-treated 4.5 ± 1.8 . The
15
16 average gland number in the 20-day protocol was slightly higher in the control group 7.7 ± 0.7
17
18 compared to the DHEA-treated group 5.0 ± 0.5 ($p < 0.017$). In the 7-day protocol, all of the
19
20
21
22 215 glands of rats treated with DHEA showed a clear accumulation on NHERF1 in the “Golgi area”,
23
24 whereas all glands from control animals showed NHERF1 in the apical and cytoplasm region. In
25
26 the 20-day protocol, all uterine sections showed at least one gland with “Golgi area staining” and
27
28 67.2 percent of all DHEA glands analyzed showed staining in the “Golgi area”, whereas all the
29
30 controls displayed the staining at the apical/cytoplasm membrane (Table 1).
31
32
33

220

34 35 36 37 **DISCUSSION**

38
39 Here we studied the effect of DHEA administration to immature Wistar rats for 7 and 20 days,
40
41 and we observed morphological and cellular alterations consistent with a PCOS condition as
42
43 early as 7 days of DHEA injection. Our results were in agreement with previous reports, a study
44
45 conducted in 400 rats, where 6mg/100g of DHEA was administrated for 10, 15 and 20 days
46
47 225 found that the majority of the rats has no corpus luteum and have developed follicular cyst as
48
49 early as 10 days of DHEA.²⁸ We also detected the development of dysplastic lesions in the
50
51 uterine epithelium after 20 days of treatment that were consistent with previous reports that
52
53 showed a detrimental effect of DHEA in mouse uterus.²⁹ Failure of implantation linked with
54
55
56
57
58
59
60

1
2
3 230 defective endometrial receptivity has been observed in women with PCOS, but the molecular
4 causes remain unknown.³⁰ Recent studies, in rats and humans, strongly support a role of
5 NHERF1 in uterine receptivity revealing the importance of NHERF1 subcellular localization in
6 cytoskeleton changes at the implantation site.^{31,32}
7
8
9

10
11
12
13
14
15 235 Uterine glands have a crucial role in uterus receptivity for embryo implantation and nutrition,
16 and they also have an important role in the development of the fetus and placenta. The secretion
17 of macromolecules by the endometrial glands is called “histiotroph” and constitutes the initial
18 nutrition of the conceptus and fetus in humans, rats and other species before the placenta is
19 developed and the fetal tissues receive nutrients from the maternal blood.³³ Several
20 macromolecules have been identified in the histiotroph of humans and rodents such as Glycogen,
21 Glycodelin A, Mucin 1 (MUC-1) and a number of cytokines.³⁴ For instance, Glycodelin A levels
22 in uterine fluid is reduced in infertile women suggesting a role of this protein in uterus
23 receptivity.³⁵ In this context, understanding the regulation of the uterine gland’s secretion is the
24 key to understanding the normal physiology of the glands and the alterations found in
25 pathological conditions produced by genetic disorders or environmental factors. The
26 administration of DHEA in 22 day-old Wistar rats showed a strong effect in the cellular
27 distribution of NHERF1 in glandular and certain areas of luminal epithelial cells of the uterus.
28 NHERF1 accumulates in the “Golgi apparatus area” in virtually all of the glands in the 7-day
29 protocol and the majority of the glands in the 20-day protocol. At present, there are no reports
30 about the direct action of DHEA in the Golgi apparatus of rat endometrial glands or the effect of
31 DHEA in NHERF1 expression or cell distribution. It was known that NHERF1 plays an
32 important role in the endocytic pathway participating in protein sorting and recycling as it was
33
34
35
36
37
38
39 245
40
41
42
43
44
45
46
47
48
49
50 250
51
52
53
54
55
56
57
58
59
60

1
2
3 described for the CFTR and 2-adrenergic receptor.^{36,37} To date, the sorting of signals from the
4 Golgi apparatus and transport of proteins to the basolateral membrane are more conserved and
5
6
7
8 255 better characterized than the apical ones.³⁸ The mechanism of protein oligomerization as delivery
9
10 to the apical membrane was only previously described for lipids, so the apical protein sorting of
11
12 Podocalyxin/Gp135 that was mediated by an adaptor protein such as NHERF1 opened a new
13
14
15 paradigm in the mechanism involved in this process.³⁹ Several studies in different species
16
17 showed the effect of estradiol-17 β in the organelles of uterine epithelia and uterine glands. In
18
19
20 260 ovariectomized sheep uterine glands, the treatment with estradiol for two days induce a
21
22 significant increase in cell height and morphological alterations in the Golgi apparatus and the
23
24 rough endoplasmic reticulum (RER). The Golgi apparatus and the RER were enlarged, with
25
26 numerous vacuoles associated to the trans-Golgi network indicated an increase protein synthesis
27
28 and secretory activity.⁴⁰ These changes in uterine glands had been observed in another species
29
30
31 265 such as cat, dogs, human and non human primates.⁴¹⁻⁴³ The accumulation of NHERF1 at the
32
33 “Golgi area” that we found as a response to DHEA administration, could affect the sorting of
34
35 proteins to the apical membrane and gland secretion. Also, the diminished amount of NHERF1 at
36
37 the apical membrane could have and effect in the organization of the apical epithelial
38
39 compartment. Further studies need to be undertaken to determine to what extent NHERF1
40
41
42
43 270 functions in the Golgi machinery.

44
45
46
47
48 DHEA is and inactive hormonal precursor that exerts its actions through conversion to androgens
49
50 or estrogens in peripheral tissues. To date, no specific receptor for DHEA has been
51
52 characterized. The 17 β hydroxysteroid dehydrogenase enzyme (17 β -HSD) converts DHEA to
53
54
55
56 275 androstenediol which is the substrate of the 3 β -HSD to produce testosterone. The final step in the
57
58
59
60

1
2
3 conversion of testosterone to estrogens is catalyzed by the aromatase enzyme that is present in
4 several tissues in addition to the gonads and the endometrium. The specific balance determining
5 the synthesis of androgens or estrogens from DHEA depends on the expression of steroidogenic
6 enzymes, so the hormonal context within each cell will determine the ultimate activation of an
7 androgen or estrogen receptor. Recent reports showed that women with high levels of DHEA in
8 blood, such as those observed in PCOS, showed an increased androstenediol synthesis and
9 higher expression of estrogen and androgen receptors in the endometrium. It was also showed
10 that, the uterine androstenediol exert estrogenic instead of androgenic actions on the endometrial
11 cells of PCOS women.^{44,45} Within this context, the changes in NHERF1 subcellular distribution
12
13 280 are more likely a result of estrogenic action instead a direct effect of DHEA or testosterone. As it
14 was mentioned before, NHERF1 protein synthesis is stimulated by estrogens but not by
15 testosterone, and changes in protein synthesizing organelles such as the Golgi apparatus and
16 RER have been observed in endometrium in response to estrogen stimulation.
17
18
19
20
21
22
23
24
25 285
26
27
28
29
30
31
32
33
34
35

36 290 In summary, the effect of NHERF1 subcellular distribution may have a substantial effect in the
37 uterus receptivity from two aspects: possible changes in normal glandular secretion and
38 alteration of the membrane ultrastructure and remodeling during the first attachment of the
39 trophoblast. Further study remains to determine whether NHERF1 could be used as a marker or
40 early indicator of hormone imbalance and hiperandrogenism from endogenous causes or external
41 endocrine disruptor chemicals.
42
43
44
45
46
47
48 295
49
50
51
52
53
54
55

56 Acknowledgements

57
58
59
60

We thank Paul Strobl for his contribution in the editing of this manuscript.

300 Disclosure Statement: The authors have no conflict of interest and nothing to disclose

REFERENCES

1. Franks S, Stark J, Hardy K. Follicle dynamics and anovulation in polycystic ovary syndrome. *Hum Reprod Update* 2008; 14:367-378.
- 305 2. Franks S, McCarthy MI, Hardy K. Development of polycystic ovary syndrome: involvement of genetic and environmental factors. *Int J Androl* 2006; 29:278-285.
3. Xita N, Georgiou I, Tsatsoulis A. The genetic basis of polycystic ovary syndrome. *Europ J of Endoc* 2002; 147:717-725.
4. Mendoza N. Common genetic aspects between polycystic ovary syndrome and diabetes mellitus. *Curr Diabetes Rev* 2011; 7:377-391.
- 310 5. Fauser BC, Tarlatzis BC, Rebar RW, Legro RS, Balen AH, Lobo R, Carmina E, Chang J, Yildiz BO, Laven JS, Boivin J, Petraglia F, et al. Consensus on women's health aspects of polycystic ovary syndrome (PCOS): the Amsterdam ESHRE/ASRM-Sponsored 3rd PCOS Consensus Workshop Group. *Fertil Steril*. 2012; 7:28-38.
- 315 6. Fauser BC. Observations in favor of normal early follicle development and disturbed dominant follicle selection in polycystic ovary syndrome. *Gynecol Endocrinol* 1994; 8:75-82.
7. Giudice LC. Endometrium in PCOS: Implantation and predisposition to endocrine CA. *Best Pract Res Clin Endocrinol Metab* 2006; 20:235-244.
- 320 8. Kandaraki E, Chatzigeorgiou A, Livadas S, Palioura E, Economou F, Koutsilieris M, Palimeri S, Panidis D, Diamanti-Kandarakis E. Endocrine disruptors and polycystic ovary

- 1
2
3 syndrome (PCOS): elevated serum levels of bisphenol A in women with PCOS. *J Clin*
4
5 *Endocrinol Metab* 2011; 96:480-484.
6
7
8 9. Szukiewicz D, Uilenbroek JT. Polycystic ovary syndrome--searching for an animal model.
9
10 325 *J Med*. 1998; 29:259-275.
11
12
13 10. Mahajan DK. Polycystic ovarian disease: animal models. *Endocrinol Metab Clin North Am*.
14
15 1988; 17: 705-732.
16
17
18 11. Mahesh VB, Greenblatt RB. Physiology and pathogenesis of the Stein-Leventhal syndrome.
19
20 *Nature* 1961; 26:888-890.
21
22 330 12. Roy S, Mahesh VB, Greenblatt RB. The effect of dehydroepiandrosterone and D-
23
24 androstendione on the reproductive organs of female rats: production of cystic changes in
25
26 the ovary. *Nature* 1962; 196:42-43.
27
28
29 13. Knudsen JF, Costoff A, Mahesh VB. Dehydroepiandrosterone-induced polycystic ovaries
30
31 and acyclicity in the rat. *Fertil Steril*. 1975; 26:807-817.
32
33
34 335 14. Bretscher A, Chambers D, Nguyen R, Reczek D. ERM-Merlin and EBP50 protein families
35
36 in plasma membrane organization and function. *Annu Rev Cell Dev Biol* 2000; 16:113-143.
37
38
39 15. Morales FC, Takahashi Y, Kreimann EL, Georgescu MM. Ezrin-radixin-moesin (ERM)-
40
41 binding phosphoprotein 50 organizes ERM proteins at the apical membrane of polarized
42
43 epithelia. *Proc Natl Acad Sci (USA)* 2004; 101:17705-17710.
44
45
46 340 16. Shenolikar S, Voltz JW, Cunningham R, Weinman EJ. Regulation of ion transport by the
47
48 NHERF family of PDZ proteins. *Physiology (Bethesda)* 2004; 19:362-369.
49
50
51 17. Katzenellenbogen BS, Choi I, Delage-Mourroux R, Ediger TR, Martini PG, Montano M,
52
53 Sun J, Weis K, Katzenellenbogen JA. Molecular mechanisms of estrogen action: selective
54
55 ligands and receptor pharmacology. *J Steroid Biochem Mol Biol* 2000; 74:279-285.
56
57
58
59
60

- 1
2
3 345 18. Reczek D, Berryman M, Bretscher A. Identification of EBP50: A PDZ-containing
4 phosphoprotein that associates with members of the ezrin-radixin-moesin family. *J Cell Biol*
5 1997; 139:169–179.
6
7
8
9
10 19. Cuello-Carrión FD, Troncoso M, Guiñazu E, Valdez SR, Fanelli MA, Ciocca DR,
11 Kreimann EL. Estrogens regulate the expression of NHERF1 in normal colon during the
12 reproductive cycle of Wistar rats. *Histochem Cell Biol Histochemistry and Cell Biology*
13 350 2010; 134:623-630.
14
15
16
17
18
19
20 20. Bryant DM, Mostov KE. From cells to organs: building polarized tissue. *Nat. Rev. Mol Cell*
21 *Biol* 2008; 9:887-901
22
23
24 21. Wilson C, Venditti R, Rega LR, Colanzi A, D'Angelo G, De Matteis MA. The Golgi
25 apparatus: an organelle with multiple complex functions. *Biochem J* 2011; 433:1-9.
26 355
27
28
29 22. Rodriguez-Boulan E, and Musch A. Protein sorting in the Golgi complex: shifting
30 paradigms. *Biochim. Biophys. Acta* 2005; 1744:455–464.
31
32
33
34 23. Kreimann EL, Morales FC, de Orbeta-Cruz J, Takahashi Y, Adams H, Liu TJ, McCrea PD,
35 Georgescu MM. Cortical stabilization of β -catenin contributes to NHERF1/EBP50 tumor
36 suppressor function. *Oncogene* 2007; 26:5290-5299.
37 360
38
39
40 24. Yu CY, Chen JY, Lin YY, Shen KF, Lin WL, Chien CL, ter Beest MB, Jou TS. A bipartite
41 signal regulates the faithful delivery of apical domain marker podocalyxin/Gp135. *Mol Biol*
42 *Cell* 2007; 18:1710-1722.
43
44
45
46
47
48 25. Sander V, Luchetti CG, Solano ME, Elia E, Di Girolamo G, Gonzalez C, Motta AB. Role of
49 the N, N'-dimethylbiguanide metformin in the treatment of female prepuberal BALB/c mice
50 365 hyperandrogenized with dehydroepiandrosterone. *Reproduction*. 2006; 131:591-602.
51
52
53
54
55
56 26. Anderson E, Lee GY, O'Brien K. The polycystic ovarian condition in the
57
58
59
60

- 1
2
3 dehydroepiandrosterone treated rat model: hyperandrogenism and the resumption of meiosis
4
5 are major initial events associated with cystogenesis of antral follicles. *Anat Rec* 1997;
6
7
8 370 249:44-53.
- 9
10 27. Fouassier L, Duan CY, Feranchak AP, Yun CH, Sutherland E, Simon F, Fitz JG, Doctor RB
11
12 Ezrin-radixin-moesin-binding phosphoprotein 50 is expressed at the apical membrane of rat
13
14 liver epithelia. *Hepatology*. 2001; 33:166-76.
- 15
16
17 28. Lee MT, Anderson E, Lee GY. Changes in ovarian morphology and serum hormones in the
18
19 375 rat after treatment with dehydroepiandrosterone. *Anat Rec*. 1991; 231:185-192.
- 20
21
22 29. Elia E, Vighi S, Lombardi E, Motta AB. Detrimental effects of hyperandrogenism on
23
24 uterine functions. *International Immunopharmacology* 2008; 8:1827–1834.
- 25
26
27 30. Lopes IM, Baracat MC, Simões MD, Simões RS, Baracat EC, Soares Jr JM. Endometrium
28
29 in women with polycystic ovary syndrome during the window of implantation. *Rev Assoc*
30
31 380 *Med Bras* 2011; 57:702-709.
- 32
33
34 31. Lecce L, Lindsay LA, Murphy CR. Ezrin and EBP50 redistribute apically in rat uterine
35
36 epithelial cells at the time of implantation and in response to cell contact. *Cell Tissue Res*.
37
38 2011; 343:445-453.
- 39
40
41 32. Heng S, Hannan NJ, Rombauts LJ, Salamonsen LA, Nie G. PC6 levels in uterine lavage are
42
43 385 closely associated with uterine receptivity and significantly lower in a subgroup of women
44
45 with unexplained infertility. *Hum Reprod*. 2011; 26:840-846.
- 46
47
48 33. Beck F. Comparative placental morphology and function. *Environ Health Perspect* 1976;
49
50 18:5-12.
- 51
52
53 34. Burton GJ, Watson AL, Hempstock J, Skepper JN, Jauniaux E. Uterine glands provide
54
55 390 histiotrophic nutrition for the human fetus during the first trimester of pregnancy. *J Clin*
- 56
57
58
59
60

- 1
2
3 Endocrinol Metab 2002; 87:2954-2959.
4
5
6 35. Beir-Hellwig K, Sterzik K, Bonn B, Beir HM. Contribution to the physiology and pathology
7 of endometrial receptivity: the determination of protein patterns in human uterine
8 secretions. Hum Reprod 1989; 4:115–120.
9
10
11
12 395 36. Moyer BD, Denton J, Karlson KH, Reynolds D, Wang S, Mickle JE, Milewski M, Cutting
13 GR, Guggino WB, Li M, Stanton BA. A PDZ-interacting domain in CFTR is an apical
14 membrane polarization signal. J Clin Invest 1999; 104:1353-1361.
15
16
17
18
19
20 37. Cao TT, Deacon HW, Reczek D, Bretscher A, von Zastrow M. A kinase-regulated PDZ-
21 domain interaction controls endocytic sorting of the beta2-adrenergic receptor. Nature 1999;
22 400 16:286-290.
23
24
25
26
27 38. Weisz OA, Rodriguez-Boulan E. Apical trafficking in epithelial cells: signals, clusters and
28 motors. J Cell Sci 2009; 122:4253-4266.
29
30
31
32 39. Paladino S, Sarnataro D, Pillich R, Tivodar S, Nitsch L, Zurzolo C. Protein oligomerization
33 modulates raft partitioning and apical sorting of GPI-anchored proteins. J Cell Biol 2004;
34 405 167:699–709.
35
36
37
38
39 40. Murray MK. The effect of estrogen and progesterone on structural changes in the uterine
40 glandular epithelium of the ovariectomized sheep. Biol Reprod 1992; 47: 408-417.
41
42
43
44 41. Bareither MI, Verhage HG. Effect of estrogen and progesterone on secretory granule
45 formation and release in the endometrium of the ovariectomized cat. Biol Reprod 1980; 22:
46 410 635-643
47
48
49
50 42. Brenner RM, Maslar IA. The primate oviduct and endometrium. In: Knobil E, Neill JD,
51 Ewing LL, Markert CL, Greenwald GS, Pfaff DW (eds.). The Physiology of Reproduction.
52 New York: Raven Press, Ltd; 1988: 303-329.
53
54
55
56
57
58
59
60

- 1
2
3
4
5
6 415
7
8
9
10
11
12
13
14
15
16
17
18 420
19
20
21
22
23
24
25
26
27
28
29
30
31
32
33
34
35
36
37
38
39
40
41
42
43
44
45
46
47
48
49
50
51
52
53
54
55
56
57
58
59
60
43. Barrau MD, Abel JH Jr, Verhage HG, Tietz WJ Jr. Development of the endometrium during the estrous cycle in the bitch. *Am J Anat* 1975; 142: 47-66.
44. Panjari M, Davis SR. DHEA for postmenopausal women: A review of the evidence. *Maturitas* 2010; 66: 172-179.
45. Plaza F, Gabler F, Romero C, Vantman D, Valladares L, Vega M. The conversion of dehydroepiandrosterone into androst-5-ene-3 β , 17 β -diol (androstenediol) is increased in endometrial from untreated women with polycystic ovarian syndrome. *Steroids* 2010; 75: 810-817.

LEGENDS

FIG. 1. Ovarian and uterine histology of control and DHEA-injected rats. The images show Hematoxylin and Eosin (H&E) stained section of 10% formalin fixed tissues. (A) Ovary from control vehicle-treated rats (7-days), showing secondary (preantral), tertiary (antral) and preovulatory (graafian) follicles. (B) Ovary from 7-days DHEA-treated rats with an increased number of secondary and atresic follicles (Af). (C). Ovary from 20-day control rat showing the presence of corpus luteum (Cl). (D) Ovary from 43 day-old rat treated with DHEA for 20 days. Notice the presence of large cystic follicle (Cf) with a diminished layer of granulose cells and cellular debris (Cd) in the lumen and no corpus luteum. (E) Control uterine epithelium. (F) DHEA- treated epithelium showing the alteration in epithelial morphology and increased epithelial height (H). (G) Altered morphology of epithelium from 20-day DHEA treated rats showing slight dysplastic morphology with vacuolization (V) of the endometrial cells **hyperchromatism, hyperplasia** and increased layer of cells in the epithelia. (H) Hyperplastic and dysplastic (D) uterine epithelium from a 20-day DHEA-treated rat. Original magnifications: X100 (A-D), and X400 (E-H).

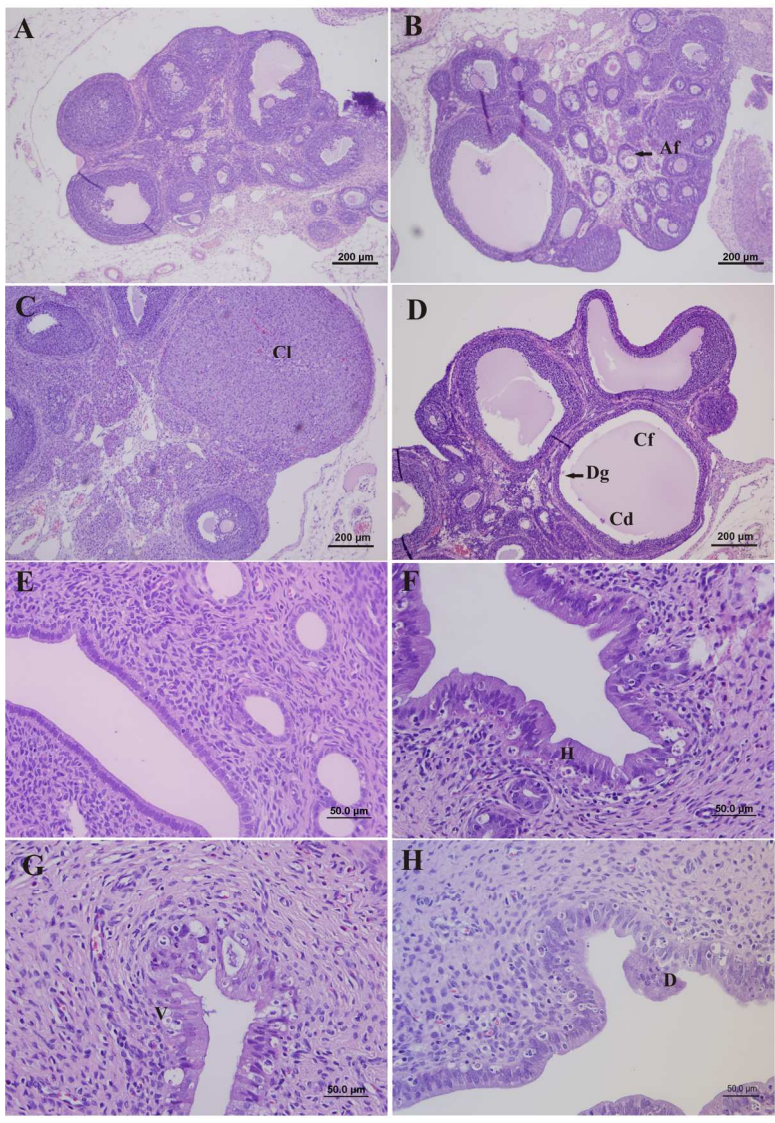
FIG. 2. DHEA administration induced changes in ovarian and uterus weight and morphology. (A) Enlarged uterus diameter in rats injected with DHEA for 7 days (control, n=3; DHEA, n=9) ($p=0.0041$). (B) Increase in epithelial cell height in the luminal epithelial uterine cells after DHEA administration for 7 days (control, n=3; DHEA, n=6) ($p < 0.05$) (C) The ovaries of the 20-day protocol with DHEA were smaller and their weight was significantly decreased compared to controls (control, n=4; DHEA, n=4) ($p=0.0094$). (D) The uterine weight was significantly higher in DHEA-injected rats (20-day protocol) (control, n=4; DHEA, n=4) ($p < 0.05$). (E) The diameter

1
2
3 of the largest follicle was measured in duplicated slides of each ovary in DHEA (20 day-
4 protocol) and control rats. Consistent with the presence of ovarian cysts, the diameter of the
5 largest follicle was larger in the DHEA-treated rats (control, n=3; DHEA, n=4) ($p < 0.04$). The
6 results are expressed as mean \pm SD.
7
8
9
10
11

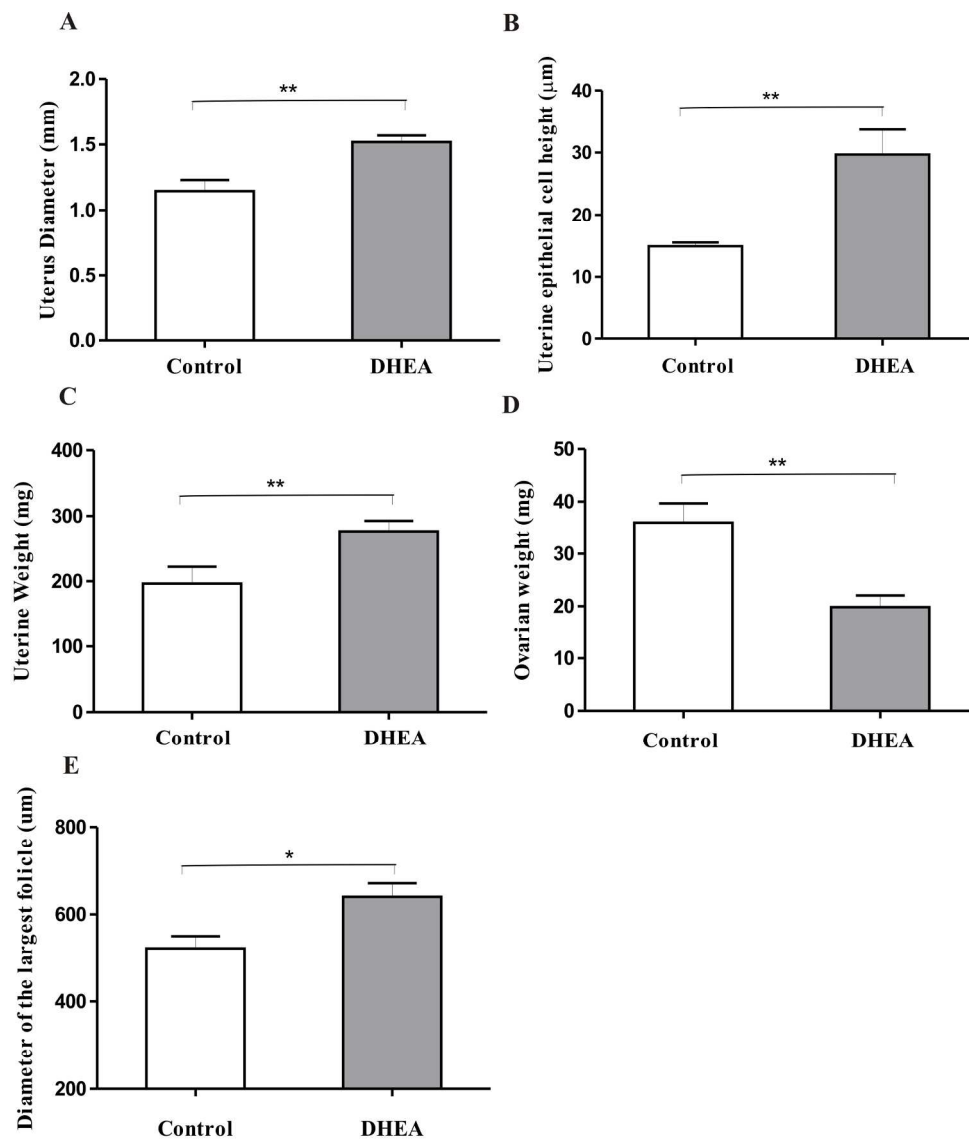
12 **FIG. 3.** DHEA administration induces NHERF1 accumulation in the “Golgi area” of glandular
13 uterine epithelial cells. NHERF1 immunohistochemistry analysis of liver (A) and kidney (B)
14 from control rats showing the specific staining (arrows) in bile canaliculi (Bc) of the liver and
15 renal proximal tubule (Pt) of the kidney, and the negative staining of the glomerulus (G) of the
16 kidney (head arrows). (C) Control luminal epithelium of the uterus showing the normal apical
17 (Ap) and slightly cytoplasmic NHERF1 localization at the cell membrane. (D) Epithelium from
18 20-day DHEA-treated rat uterus displaying a different NHERF1 expression pattern in enlarged
19 epithelial cells with a reduction of apical staining and localization of the protein in the
20 supranuclear/Golgi area (Ga). (E) Glandular epithelium from control rats (20-day vehicle) with
21 positive NHERF1 staining in the apical/cytoplasmic cell compartment. (F) Cellular redistribution
22 of NHERF1 in glandular epithelium (Ge) of 20-day DHEA treated rats showing staining in
23 “Golgi area” (Ga) of the cells. (G) Section of uterus control (7-day vehicle) showing apical
24 staining (Ap) and (H) 7-day DHEA treated uterine gland showing a clear accumulation of
25 NHERF1 in the supranuclear/Golgi area (Ga) after 7 days of DHEA administration. The staining
26 in G and H was developed at shorter time by design in order to have a better visualization of the
27 label. (I and J) Immunofluorescence labeling of the Golgi apparatus of the luminal epithelium (I)
28 and endometrial glands (J) using a specific antibody (for details see Materials and Methods).
29 Notice the staining in the “supranuclear area” (arrows) similar to the one observed with the anti-
30 NHERF1 antibody. Original magnification (A-J) X1000.
31
32
33
34
35
36
37
38
39
40
41
42
43
44
45
46
47
48
49
50
51
52
53
54
55
56
57
58
59
60

1
2
3
4
5
6
7
8
9
10
11
12
13
14
15
16
17
18
19
20
21
22
23
24
25
26
27
28
29
30
31
32
33
34
35
36
37
38
39
40
41
42
43
44
45
46
47
48
49
50
51
52
53
54
55
56
57
58
59
60

Figure 1



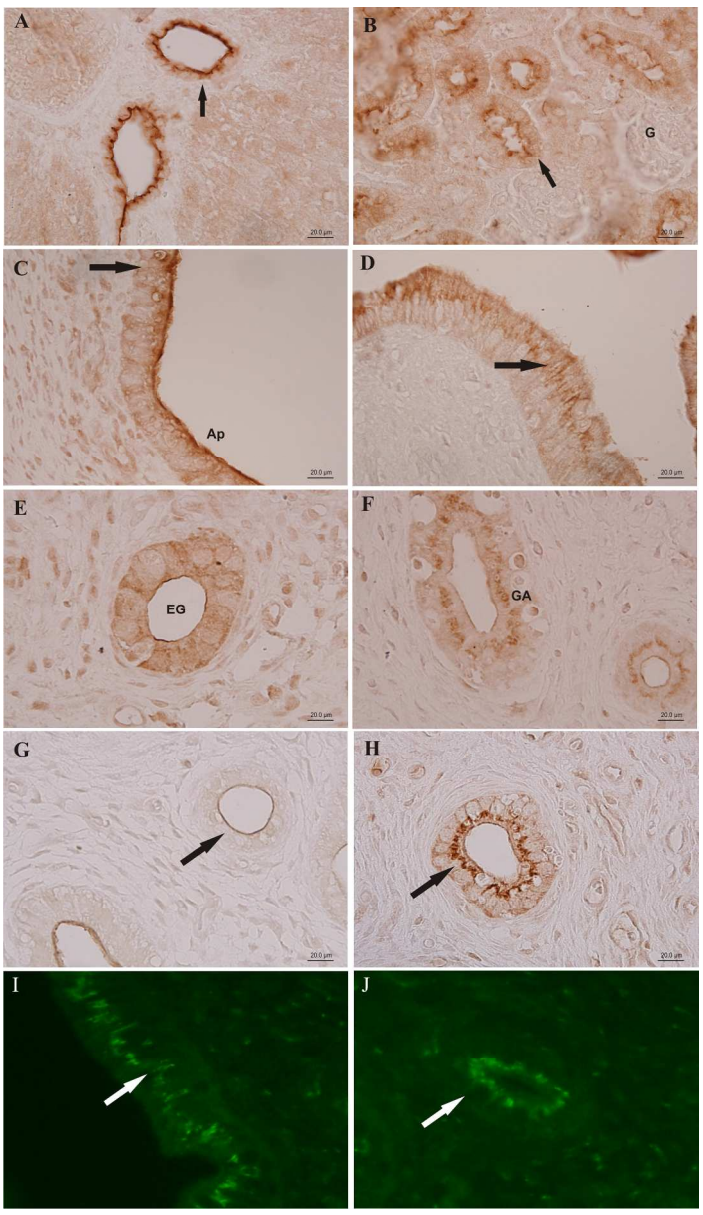
128x199mm (300 x 300 DPI)



193x221mm (300 x 300 DPI)

1
2
3
4
5
6
7
8
9
10
11
12
13
14
15
16
17
18
19
20
21
22
23
24
25
26
27
28
29
30
31
32
33
34
35
36
37
38
39
40
41
42
43
44
45
46
47
48
49
50
51
52
53
54
55
56
57
58
59
60

1
2
3
4
5
6
7
8
9
10
11
12
13
14
15
16
17
18
19
20
21
22
23
24
25
26
27
28
29
30
31
32
33
34
35
36
37
38
39
40
41
42
43
44
45
46
47
48
49
50
51
52
53
54
55
56
57
58
59
60



161x278mm (300 x 300 DPI)

Table 1. Cellular distribution of NHERF1 expression in endometrial glands of control and DHEA treated Wistar rats

Experimental Groups	Apical/Cytoplasm (%) glands	Apical/Golgi Area (%) Glands	Total Fields Analyzed
Vehicle 7 days	100	-	47* (n=5)
DHEA 7 days	-	100	69 (n=7)
Vehicle 20 days	100	-	98 (n=4)
DHEA 20 days	32.8	67.2	94 (n=5)

*The total number of fields corresponds to the gland number counted in 2-4 consecutive slides/rat.

Immunohistochemistry analysis of NHERF1 expression in endometrial glands of rats injected with vehicle or DHEA for 7 and 20 days. For each gland, we classified the expression of NHERF1 in the apical/cytoplasmic or supranuclear/golgi area, and we counted the total number of glands/section in consecutive tissue sections of control and treated rats. In the 7-day protocol, all of the glands of rats treated with DHEA showed a clear accumulation on NHERF1 in the “Golgi area,” whereas all glands from control animals showed NHERF1 in the apical and cytoplasm region. In the 20-day protocol, all uterine sections showed at least one gland with “Golgi area staining” and 67.2 percent of all DHEA glands analyzed showed staining in the “Golgi area,” whereas all the controls displayed the staining at the apical/cytoplasm membrane.

1
2
3
4
5
6
7
8
9
10
11
12
13
14
15
16
17
18
19
20
21
22
23
24
25
26
27
28
29
30
31
32
33
34
35
36
37
38
39
40
41
42
43
44
45
46
47
48
49
50
51
52
53
54
55
56
57
58
59
60

For Peer Review