

The relationship of fibroblast growth factor 21 with cardiovascular outcome events in the Fenofibrate Intervention and Event Lowering in Diabetes Study

Running title: FGF21 and cardiovascular outcomes in FIELD

Kwok-Leung Ong^{1,2,3,4}, Andrzej S. Januszewski^{4,5}, Rachel O'Connell⁴, Alicia J. Jenkins^{4,5}, Aimin Xu^{6,7}, David R. Sullivan⁸, Philip J. Barter^{1,2,3}, Wei-Ting Hung⁴, Russell S. Scott⁹, Marja-Riitta Taskinen¹⁰, Anthony C. Keech^{4,11*}, Kerry-Anne Rye^{1,2,3*}

¹Lipid Research Group, Heart Research Institute, Sydney, NSW, Australia; ²Faculty of Medicine, University of Sydney, Sydney, NSW, Australia; ³Centre for Vascular Research, University of New South Wales, Sydney, NSW, Australia; ⁴National Health and Medical Research Council Clinical Trials Centre, University of Sydney, Sydney, NSW, Australia; ⁵Department of Medicine, University of Melbourne, Melbourne, VIC, Australia; ⁶Department of Medicine, University of Hong Kong, Hong Kong, China; ⁷State Key Laboratory of Pharmaceutical Biotechnology, University of Hong Kong, Hong Kong; ⁸Department of Clinical Biochemistry, Royal Prince Alfred Hospital, Sydney, NSW, Australia; ⁹Lipid and Diabetes Research Group, Christchurch Hospital, Christchurch, New Zealand; ¹⁰Heart and Lung Centre, Cardiovascular Research Unit, Helsinki University Central Hospital and Diabetes and Obesity Research Program, University of Helsinki, Biomedicum, Finland; ¹¹Department of Cardiology, Royal Prince Alfred Hospital, Sydney, NSW, Australia.

*A.C.K. and K.A.R. are joint senior authors.

Address for correspondence:

Dr. Kwok Leung Ong, PhD

NHMRC Clinical Trials Centre, Level 6, Medical Foundation Building, University of

Sydney, Sydney, NSW 2050, Australia, and Centre for Vascular Research, Level 3, Lowy
Cancer Research Centre, University of New South Wales, Sydney, NSW 2052, Australia

Tel: +61-2-93852156

Fax: +61-2-93851797

E-mail: oklws@yahoo.com.hk

Number of Tables: 3

Number of Figures: 1

Number of ESM Tables: 9

Word count: 248 (abstract)

3,416 (main text)

Abstract

Aims/hypothesis Circulating fibroblast growth factor 21 (FGF21) levels are often elevated in obesity, dyslipidaemia, insulin resistance and type 2 diabetes. This study investigated the relationship of plasma FGF21 levels with cardiovascular events in patients with type 2 diabetes.

Methods Plasma FGF21 levels were measured at baseline in 9,697 study participants with type 2 diabetes from the Fenofibrate Intervention and Event Lowering in Diabetes (FIELD) study by enzyme-linked immunosorbent assay. We assessed the association of FGF21 levels with incidence of different cardiovascular outcomes over 5-years. The primary outcome was total cardiovascular disease (CVD) events, and the secondary outcomes were the four individual components: coronary heart disease (CHD) events, total stroke, CVD mortality, coronary and carotid revascularization. Tertiary outcome was hospitalisation for angina pectoris.

Results Higher baseline FGF21 levels were associated with higher risks of all cardiovascular outcome events after adjusting for the study treatment allocation (all $p < 0.01$). The associations remained significant for total CVD events, and coronary and carotid revascularisation after further adjusting for confounding factors with HR (95% CI) being 1.28 (1.10, 1.50) and 1.26 (1.01, 1.56) respectively, for the highest tertile compared to the lowest tertile (overall effect $p = 0.002$ and 0.007 respectively). The addition of FGF21 levels to a model including established CVD risk factors predicting total CVD led to a non-significant increase in the C-statistic, but resulted in significant integrated discrimination improvement and net reclassification improvement.

Conclusions/interpretation Higher baseline plasma FGF21 levels were associated with higher risk of cardiovascular events in patients with type 2 diabetes.

International Standard Randomised Controlled Trial number ISRCTN64783481

Key words Cardiovascular outcome; fenofibrate; Fenofibrate Intervention and Event Lowering in Diabetes (FIELD) study; fibroblast growth factor 21

Abbreviations

CHD Coronary heart disease

CVD Cardiovascular disease

FGF21 Fibroblast growth factor 21

FIELD Fenofibrate Intervention and Event Lowering in Diabetes

IDI Integrated discrimination improvement

IQR interquartile range

NRI net reclassification improvement

Introduction

Fibroblast growth factor 21 (FGF21) is a novel metabolic regulator [1-4]. In animal studies, FGF21 has anti-inflammatory, anti-diabetic and hypolipidaemic effects [1, 5, 6]. However, in human studies, circulating FGF21 levels are often elevated in obesity, dyslipidaemia, insulin resistance, type 2 diabetes, non-alcoholic fatty liver disease and coronary artery disease [4, 7-10]. The elevation in FGF21 levels may be a compensatory response to underlying metabolic stress or due to impaired FGF21 signalling leading to FGF21 resistance [4]. In recent years, several pharmaceutical companies have carried out preclinical studies to investigate the benefits of FGF21-based therapies in diabetes and obesity-associated disorders [11-13]. In a recent proof-of-concept trial, daily subcutaneous injection of a variant of FGF21 resulted in favourable changes in lipid levels, lipoprotein profile, body weight, fasting insulin and adiponectin levels in obese patients with type 2 diabetes [14]. Recent animal studies have also demonstrated a cardioprotective effect of FGF21 [15, 16].

The aim of the Fenofibrate Intervention and Event Lowering in Diabetes (FIELD) study was to investigate the effect of long-term lipid-lowering treatment with fenofibrate on adverse macrovascular outcomes in patients with type 2 diabetes [17]. In the FIELD study, although fenofibrate therapy did not significantly reduce the primary outcome of major coronary events over 5 years, it did reduce the main pre-specified secondary endpoint of total cardiovascular disease (CVD) events in patients with type 2 diabetes [18]. There are very limited data in the literature on the relationship of circulating FGF21 levels with CVD events in a large-scale, well-designed cohort. The size of the FIELD trial ($n=9,795$) and number of cardiovascular events provide a unique opportunity to examine the relationship of FGF21

levels to cardiovascular risk. Therefore, in this 5-year study, we investigated whether circulating FGF21 levels were associated with any cardiovascular outcome events, and whether FGF21 levels can provide incremental information on risk stratification compared to a model using traditional cardiovascular risk factors alone.

Methods

Study design

The study design, baseline subject characteristics and major findings of the FIELD study have been described previously [17-21]. Briefly, the FIELD study was a double-blind placebo-controlled randomised trial, involving a total of 9,795 patients with type 2 diabetes recruited into the study between February 1998 and November 2000. All patients were aged 50-75 years and randomly allocated to once-daily co-micronized fenofibrate 200 mg or matching placebo for 5 years (International Standard Randomised Controlled Trial number ISRCTN64783481). The study protocol was approved by national and local ethics committees. The study was undertaken in accordance with the Declaration of Helsinki and Good Clinical Practice Guidelines. All study patients gave written consent.

Plasma FGF21 measurement

In the present study, 9,697 (99.0%) out of 9,795 patients from the FIELD study had plasma samples at baseline available for FGF21 measurement. In a separate analysis, plasma FGF21 levels were also measured in a random sub-sample of 1,919 patients (62.4% males and 49.8% in the fenofibrate treatment group) at one year to assess the effect of fenofibrate treatment. FGF21 levels were measured using enzyme-linked immunosorbent assay kits (Antibody and Immunoassay Services, University of Hong Kong, Hong Kong) as described previously in our pilot study [22]. Briefly 60 µl of plasma sample was diluted 1:1 (v:v) with

assay diluent and analysed together with quality controls as per manufacturer's instruction. The intra-assay and inter-assay coefficients of variation were <6%. All samples were analysed masked for patient identity and study treatment allocation.

Other variables of interest

The measurement methods of clinical characteristics, and details on the primary endpoint and other outcomes of the FIELD trial have been described previously [17-24]. In this analysis, as specified for all FIELD biomarker analyses, the primary outcome was total CVD events (coronary heart disease (CHD) events, total stroke and other cardiovascular death events plus coronary and carotid revascularization). The secondary outcomes in this analysis were the individual components of total CVD events, i.e. CHD event, total stroke, CVD mortality, and coronary and carotid revascularization. In this study, we also analysed the tertiary outcome of hospital admission for angina pectoris which included unstable angina, other forms of angina pectoris and unspecified angina pectoris with matched codes of I20.0, I20.8 and I20.9 by ICD-10. In an exploratory analysis, the outcomes of CHD events, total stroke and CVD mortality were combined as the hard endpoint. Previous CVD comprised angina, myocardial infarction, coronary artery bypass grafting, percutaneous transluminal coronary angioplasty, stroke, peripheral vascular disease and revascularisation. Estimated GFR was calculated by the four-variable Modification of Diet in Renal Disease formula [25].

Statistical analysis

Statistical analysis was performed using SPSS 22 (IBM, Armonk, NY) or STATA 13.0 (StataCorp, College Station, TX). The relative changes of FGF21 levels from baseline to one year were calculated after \log_e -transformation, i.e., the average difference in \log_e -transformed

FGF21 levels was exponentiated to obtain a ratio which was rescaled by subtracting 1 and multiplying by 100 to derive the relative change. Treatment effect was derived from the ratio of treatment-specific ratios for the fenofibrate group relative to the placebo group. Cox regression was used to compute HR and its 95% CIs to assess the association of FGF21 levels at baseline with different outcome events. As FGF21 level was highly skewed, data were analysed after \log_e transformation to achieve a more linear relationship with outcomes. Tests for deviation from linearity indicated a significant deviation from linearity for the outcome of coronary and carotid revascularization, but not for other outcomes [26]. Therefore, tertiles of baseline FGF21 levels were used as the main analysis. The p value for the overall effect of FGF21 tertile was calculated by testing the hypothesis that the HR estimates of both tertiles 2 and 3 were equal to one. The incremental value of the addition of \log_e -transformed FGF21 levels in the risk prediction model was assessed by the change in Harrell's C-statistic using a method adapted for survival models, integrated discrimination improvement (IDI) and the category-free net reclassification improvement (NRI) as described previously [27-29]. The goodness of fit of the models was assessed using the Gronnesby and Borgan test [30]. See the online Electronic Supplementary Material (ESM) Methods for further details.

In this analysis, the principal pre-specified analysis was the association of baseline FGF21 levels with different outcomes in Cox regression analysis. A two-sided p value <0.05 was considered significant for the primary outcome; $p<0.01$ for the secondary outcomes and $p<0.001$ for tertiary outcome. For the post-hoc analysis of the association of FGF21 levels with hard endpoint, and the subgroup analysis of total CVD events, a p value <0.01 was considered significant. A two-sided p value <0.05 was considered significant for all other analyses.

Results

Baseline characteristics

There were no significant differences in age, sex, BMI, waist-to-hip ratio, known diabetes duration, and percentage of prior CVD between the 9,697 patients with baseline FGF21 levels measured and the other 98 subjects without measurement (all $p>0.05$) (ESM Table 1). The median value (IQR) of baseline plasma FGF21 was 316 (205-482) pg/ml. Table 1 shows the clinical characteristics of all the patients according to tertiles of FGF21 levels at baseline.

Effect of fenofibrate therapy on FGF21 levels

Plasma FGF21 levels increased over one year by about 101.5% in the fenofibrate group, but only 11.2% in the placebo group compared to baseline levels. Fenofibrate increased plasma FGF21 levels by 81% (95% CI 72%, 90%) relative to placebo over one year ($p<0.001$). Although women had higher FGF21 levels than men at baseline and after one-year (all $p<0.01$), the effect of fenofibrate therapy on relative change in plasma FGF21 was similar in both men and women (ESM Table 2).

Association of FGF21 levels with baseline characteristics

As shown in ESM Table 3, higher age, BMI, waist-to-hip ratio, fasting glucose, HOMA-IR, triacylglycerol, plasma creatinine and homocysteine as well as female sex, smoking and prior history of CVD were independently associated with higher FGF21 levels, while longer known diabetes duration, and higher LDL cholesterol, HbA_{1c} and fibrinogen were associated with lower FGF21 levels. In a separate analysis, the effect of concomitant use of baseline glucose lowering and cardiovascular medications on FGF21 levels was analysed. For glycaemic control, compared to diet therapy, the use of oral agents (mainly

metformin and/or sulfonylurea) was associated with higher FGF21 levels ($p=0.009$), whereas the use of insulin was associated with lower FGF21 levels ($p<0.001$) (ESM Table 4). For cardiovascular medication, the use of aspirin was associated with lower FGF21 levels ($p=0.02$), whereas the use of diuretic was associated with higher FGF21 levels ($p<0.001$) (ESM Table 5).

Association of baseline FGF21 levels with cardiovascular events

Among 9,697 patients with valid data on FGF21 levels, 1,281 patients developed total CVD events, 537 developed CHD events, 330 developed stroke, 266 developed CVD mortality, 691 developed coronary and carotid revascularisation, and 455 needed hospitalisation for angina pectoris during a median follow-up period of 5 years. Table 2 shows the association of tertiles of plasma FGF21 levels at baseline with different outcome events over 5 years. When only adjusting for treatment allocation, higher tertiles of plasma FGF21 levels were associated with higher risks of all outcome events (all overall effect $p<0.01$). However, the association remained significant only for total CVD events ($p=0.002$), and coronary and carotid revascularization ($p=0.007$) after adjusting for confounding factors (Table 2 and Fig. 1a). Associations were demonstrated for total stroke and hospitalisation for angina pectoris however they did not meet the pre-specified criteria for a ‘significant’ p value for secondary and tertiary outcomes. Figure 1b shows the cumulative first event rates over 5 years by tertile of baseline FGF21 levels for all the outcomes. A significant interaction with treatment allocation was found for total CVD events, in which the association was significant in the placebo group, but not the fenofibrate group (overall effect $p<0.001$ and $p=0.19$ respectively, p for interaction =0.04) (Table 2). In a separate analysis, similar results were obtained for the association of FGF21 tertiles with different outcome events after further adjusting for glucose lowering medication, aspirin and diuretic (FGF21 tertile overall effect:

total CVD events, $p=0.002$; CHD event, $p=0.22$; total stroke, $p=0.04$; CVD mortality, $p=0.81$; coronary and carotid revascularization, $p=0.006$; hospitalisation for angina pectoris, $p=0.006$). In an exploratory analysis when the outcomes of CHD event, total stroke and CVD mortality were combined as a hard endpoint, the association of FGF21 levels did not reach the pre-specified p value criteria for significance for post-hoc analysis (ESM Table 6). Similar results were obtained when \log_e -transformed FGF21 levels, instead of FGF21 tertiles, were used in the analysis although the interaction with treatment allocation was not significant for total CVD events (ESM Table 7).

Discrimination and reclassification

The addition of FGF21 level to a model adjusted for traditional cardiovascular risk factors resulted in a modest, but significant, increase in the C-statistic for hospitalisation for angina pectoris from 0.692 to 0.698 ($p=0.03$), but not other outcomes (ESM Table 8). The IDI analysis showed a modest, but significant, improvement for total CVD events and total stroke (Table 3). When assessing the reclassification using the category-free NRI, the addition of FGF21 levels to a model with traditional cardiovascular risk factors resulted in a significant increase in the NRI for total CVD events, total stroke, and hospitalisation for angina pectoris (Table 3). In all these analyses, similar results were obtained when tertiles of FGF21 levels were used in the models (data not shown).

Association of baseline FGF21 levels with total CVD events in different subgroups

As the outcome of total CVD events had the largest number of cases, a post-hoc subgroup analysis was then performed according to some clinical characteristics, including glycaemic and lipid profiles among the placebo group. As shown in ESM Table 9, the association of tertiles of plasma FGF21 level with total CVD events did not show any

significant interaction with age, sex, previous history of CVD, BMI, smoking, known diabetes duration, HbA_{1c}, HDL cholesterol, LDL cholesterol, triacylglycerol and estimated GFR (all *p* for interaction >0.10). An interaction was demonstrated with total cholesterol, in which the association tended to be stronger in patients with higher total cholesterol (*p* for interaction =0.009).

Discussion

FGF21 is a metabolic hormone which is produced predominantly in the liver [4]. It is also produced and secreted by cardiac cells [15]. In a recent study, mice lacking FGF21 showed enhanced cardiac hypertrophy, while treatment with FGF21 protected against the hypertrophic response [15]. In another recent study, FGF21 administration was shown to mitigate myocardial infarction in response to experimental myocardial ischaemia in mice [16]. The present study is the first report of the association of plasma FGF21 level with different cardiovascular outcome events in a large-scale, well-designed clinical trial conducted in patients with type 2 diabetes.

In this 5-year follow-up study, plasma FGF21 levels at baseline were associated with total CVD events, and coronary and carotid revascularisation. Similar trends were also seen for other outcomes, although these associations lost their significance after adjusting for multiple other baseline characteristics. The findings were generally similar in both treatment arms of the study. This is consistent with previous reports showing elevated FGF21 levels in different human metabolic disease states such as obesity, the metabolic syndrome and type 2 diabetes, even though FGF21 shows anti-inflammatory, anti-diabetic and hypolipidaemic properties in animal studies [4]. In a previous cross-sectional study, serum FGF21 level was higher in 135 patients with CHD, compared with 35 control subjects [9]. In two other recent

cross-sectional studies, higher serum FGF21 was associated with higher risk of coronary artery disease [31] and carotid atherosclerosis [32], both independent of other traditional cardiovascular risk factors. In a recent small study of 87 patients with type 2 diabetes, higher serum FGF21 levels were associated with a higher risk of the combined end point of cardiovascular morbidity and mortality during a 24-month follow-up period [33]. In another recent study of 60 subjects with CAD and 129 BMI-matched subjects without CAD, serum FGF21 levels was not associated with current coronary artery status, but was associated with hypertriglyceridaemia, hyperinsulinaemia pericardial fat accumulation and the metabolic syndrome, independently of obesity [34]. The elevation in FGF21 has been suggested to be due to FGF21 resistance (as a result of impaired FGF21 signalling) or it may be a compensatory response [4]. Our study is the largest prospective study to assess the association of FGF21 levels at baseline with different cardiovascular events.

For total CVD events, the overall association of FGF21 levels at baseline was also found separately in the placebo group, but not the fenofibrate group, although such difference by treatment only reached statistical significance when assessing the FGF21 level as a tertile variable, but not as a \log_e -transformed variable. We previously reported that fenofibrate treatment increased FGF21 levels by 85% relative to placebo over 5 years in a pilot study of 216 patients from the FIELD trial [22]. In the present study, fenofibrate treatment was also found to increase FGF21 levels to a similar extent (i.e. 81%) relative to placebo over one year. In our previous study, the change in FGF21 levels by fenofibrate treatment over 5 years tended to be greater in patients with lower FGF21 levels at baseline [22]. This differential increase in FGF21 levels according to baseline FGF21 levels in the fenofibrate group may thus confound the association of baseline FGF21 levels with outcome events. Nevertheless,

further studies are needed to elucidate the non-significant association in the fenofibrate group.

In this study, we assessed the incremental value of the addition of FGF21 levels in a risk prediction model with established risk factors using C-statistics, IDI and category-free NRI. The results of these analyses suggested that plasma FGF21 levels could provide incremental information for total CVD events and FGF21 may be a potential biomarker for risk assessment of some CVD events. However, interpretation should be cautious as the improvement in C-statistics and IDI was only modest and there was no outcome event that showed significant positive results in all three different analyses. Nevertheless, for the events other than the total CVD event outcome, numbers of events and hence power for analyses was substantially lower, and the small incremental value seen here is typical of models that already consist of strong and well-established risk factors [35, 36].

In a subgroup analysis among the placebo group of the FIELD study, the association of FGF21 with total CVD events did not differ significantly by most clinical characteristics, except total cholesterol. This suggests that FGF21 could be a potential cardiovascular biomarker for patients with type 2 diabetes regardless of their glycaemic control and the presence of other cardiovascular risk factors such as previous history of CVD, obesity and smoking. It is interesting that the association of FGF21 with total CVD events tended to be stronger in patients with higher total cholesterol. In fact, recent studies have suggested that FGF21 may play a role in cholesterol metabolism [37-39].

FGF21 has demonstrated favourable metabolic and cardioprotective properties in animal studies [1, 5, 6, 15, 16] as well as in a recent proof-of-concept human clinical trial

[14]. This may seem contradictory as higher baseline FGF21 levels were associated with higher CVD risk. It does, however, indicate that an elevated circulating level of FGF21 may be implicated as a potential biomarker for the early detection of different cardiometabolic disorders [4]. The elevation of FGF21 could be a compensatory protective response to underlying metabolic stress or due to FGF21 resistance as a result of impaired FGF21 signalling, which implies the need for supraphysiological doses of FGF21 to achieve therapeutic efficacy [4]. In the proof-of-concept human clinical trial, the circulating levels of the FGF21 variant, LY2405319, were 30-300 fold higher than the physiological levels of plasma FGF21 [14]. It may also seem contradictory as some CVD risk factors, such as longer known diabetes duration, higher HbA_{1c} levels, LDL cholesterol levels, fibrinogen levels, and use of insulin medication were associated with lower, not higher, FGF21 levels. The reason for this is uncertain. However, previous studies have also reported the association of higher FGF21 levels with lower LDL cholesterol levels in pregnancy [40] and in chronic kidney disease patients [41, 42]. In another study, patients with type 2 diabetes and higher FGF21 levels had shorter diabetes duration than patients with lower FGF21 levels although the difference did not reach statistical significance [33]. These findings indicate that further clinical studies are needed to elucidate the systemic role and regulation of FGF21 levels in CVD in patients with type 2 diabetes.

Our study has the advantages of making use of the FIELD study, which is well designed and has good quality control, a large sample size, standardised assessments of different clinical characteristics and outcome events, and availability of data on many different outcome events. However, there are also several limitations in our study. In this analysis, different outcomes were assessed at the same time and thus there may be a chance of false positive results due to multiple testing. However, these outcome events were all pre-

specified in the FIELD study, adjudicated by a committee masked to study treatment allocation. The analysis of different outcome events also allowed us to gain further understanding on the role of FGF21 in cardiovascular outcomes in people with type 2 diabetes. As all the patients in the FIELD study had type 2 diabetes at baseline, the findings from this study may not be generalizable into healthy people or other people at high risk of CVD, but without diabetes. This is particularly important because patients with type 2 diabetes have been reported to have elevated FGF21 levels [4, 10, 43]. Further studies in different clinical settings, or with different subject characteristics, are needed to confirm our findings from the FIELD study.

In summary, higher plasma FGF21 levels at baseline were associated with higher risk of cardiovascular outcomes in the FIELD study and could be a compensatory protective response to underlying metabolic stress or impaired FGF21 signaling leading to FGF21 resistance. Studies of treatments which modify FGF21 levels and may influence cardiovascular risk would be justified.

Acknowledgements We thank Luke Buizen (National Health and Medical Research Council Clinical Trials Centre, University of Sydney, Sydney, NSW, Australia) for his assistance with the analysis of IDI and validation of some statistical analysis.

Funding The measurement of FGF21 levels in the FIELD samples was supported by a Grant-in-Aid (G 12S 6681) from the National Heart Foundation of Australia. KLO was supported by Program grants (482800 & 1037903) from the National Health and Medical Research Council (NHMRC) of Australia, and the Vice-Chancellor's Postdoctoral Fellowship

from the University of New South Wales. ACK was supported by NHMRC Program grant (1037786) and Fellowship grant (1024105).

Duality of Interest Fournier Pharma (now part of Abbott Pharmaceuticals) sponsored the FIELD trial but had no role in data collection or analysis. KLO has received consulting fees and has served as advisory panel member for Pfizer. AJJ has served as an advisory panel member for Medtronic; has served speaker bureau for Abbott, Animaas and Medtronic; and has received research support from Eli Lilly, Medtronic, Novo, and Sanofi Aventis. DRS has received research support from Amgen, Amarin, AstraZeneca and MSD; and has received consultancy / educational grants from Abbott, Amgen, MSD and Janssen-Cilag. PJB has served as advisory panel member for Amgen, AstraZeneca, Eli Lilly, Kowa, MSD, Novartis, Roche and Pfizer; has served as a consultant for CSL Behring, Dezima and MSD; has received research support from MSD and Pfizer; and has received honoraria for lectures from Amgen, AstraZeneca, Kowa, MSD and Pfizer. ACK has served as an Advisory Board member for Abbott Pharmaceuticals, Amgen and AstraZeneca; and has received speaker and/or advisor honoraria, and research support from Abbott, Amgen, Astra-Zeneca, Bristol-Myers Squibb, Eli Lilly, Merck, Novartis, Pfizer, Roche Diagnostics, and Solvay. KAR has served as a consultant for CSL Behring and Regeneron. All other authors have reported that they have nothing to disclose.

Contribution statement KLO wrote the first draft of the manuscript. KLO, ACK and KAR contributed to conception and design, data analysis, and interpretation of data. KLO, ASJ, AJJ, AX, DRS, PJB, RSS, MRT and ACK contributed to the acquisition of data. KLO, RO, and WTH contributed to the data analysis. ASJ, ACK, and KAR supervised the studied. KLO, AJJ, DRS, PJB, ACK, and KAR contributed to the obtaining of funding. All authors

reviewed and edited the manuscript. All authors gave final approval of the version to be published. KLO is responsible for the integrity of the work as a whole.

References

1. Kharitonov A, Shiyanova TL, Koester A et al (2005) FGF-21 as a novel metabolic regulator. *J Clin Invest* 115:1627-1635
2. Badman MK, Pissios P, Kennedy AR, Koukos G, Flier JS, Maratos-Flier E (2007) Hepatic fibroblast growth factor 21 is regulated by PPARalpha and is a key mediator of hepatic lipid metabolism in ketotic states. *Cell Metab* 5:426-437
3. Inagaki T, Dutchak P, Zhao G et al (2007) Endocrine regulation of the fasting response by PPARalpha-mediated induction of fibroblast growth factor 21. *Cell Metab* 5:415-425
4. Woo YC, Xu A, Wang Y, Lam KS (2013) Fibroblast Growth Factor 21 as an emerging metabolic regulator: clinical perspectives. *Clin Endocrinol (Oxf)* 78:489-496
5. Wente W, Efanov AM, Brenner M et al (2006) Fibroblast growth factor-21 improves pancreatic beta-cell function and survival by activation of extracellular signal-regulated kinase 1/2 and Akt signaling pathways. *Diabetes* 55:2470-2478
6. Kharitonov A, Wroblewski VJ, Koester A et al (2007) The metabolic state of diabetic monkeys is regulated by fibroblast growth factor-21. *Endocrinology* 148:774-781
7. Zhang X, Yeung DC, Karpisek M et al (2008) Serum FGF21 levels are increased in obesity and are independently associated with the metabolic syndrome in humans. *Diabetes* 57:1246-1253
8. Li H, Fang Q, Gao F et al (2010) Fibroblast growth factor 21 levels are increased in nonalcoholic fatty liver disease patients and are correlated with hepatic triglyceride. *J Hepatol* 53:934-940
9. Lin Z, Wu Z, Yin X et al (2010) Serum levels of FGF-21 are increased in coronary heart disease patients and are independently associated with adverse lipid profile. *PLoS One* 5:e15534

10. Chen C, Cheung BM, Tso AW et al (2011) High plasma level of fibroblast growth factor 21 is an independent predictor of type 2 diabetes: a 5.4-year population-based prospective study in Chinese subjects. *Diabetes Care* 34:2113-2115
11. Wu AL, Kolumam G, Stawicki S et al (2011) Amelioration of type 2 diabetes by antibody-mediated activation of fibroblast growth factor receptor 1. *Sci Transl Med* 3:113ra126
12. Foltz IN, Hu S, King C et al (2012) Treating Diabetes and Obesity with an FGF21-Mimetic Antibody Activating the β Klotho/FGFR1c Receptor Complex. *Sci Transl Med* 4:162ra153
13. Mu J, Pinkstaff J, Li Z et al (2012) FGF21 analogs of sustained action enabled by orthogonal biosynthesis demonstrate enhanced antidiabetic pharmacology in rodents. *Diabetes* 61:505-512
14. Gaich G, Chien JY, Fu H et al (2013) The Effects of LY2405319, an FGF21 Analog, in Obese Human Subjects with Type 2 Diabetes. *Cell Metab* 18:333-340
15. Planavila A, Redondo I, Hondares E et al (2013) Fibroblast growth factor 21 protects against cardiac hypertrophy in mice. *Nat Commun* 4:2019
16. Liu SQ, Tefft BJ, Roberts DT et al (2012) Cardioprotective proteins upregulated in the liver in response to experimental myocardial ischemia. *Am J Physiol Heart Circ Physiol* 303:H1446-H1458
17. FIELD Study Investigators (2004) The need for a large-scale trial of fibrate therapy in diabetes: the rationale and design of the Fenofibrate Intervention and Event Lowering in Diabetes (FIELD) study. [ISRCTN64783481]. *Cardiovasc Diabetol* 3:9
18. Keech A, Simes RJ, Barter P et al (2005) Effects of long-term fenofibrate therapy on cardiovascular events in 9795 people with type 2 diabetes mellitus (the FIELD study): randomised controlled trial. *Lancet* 366:1849-1861

19. Rajamani K, Colman PG, Li LP et al (2009) Effect of fenofibrate on amputation events in people with type 2 diabetes mellitus (FIELD study): a prespecified analysis of a randomised controlled trial. *Lancet* 373:1780-1788
20. Keech AC, Mitchell P, Summanen PA et al (2007) Effect of fenofibrate on the need for laser treatment for diabetic retinopathy (FIELD study): a randomised controlled trial. *Lancet* 370:1687-1697
21. Burgess DC, Hunt D, Li L et al (2010) Incidence and predictors of silent myocardial infarction in type 2 diabetes and the effect of fenofibrate: an analysis from the Fenofibrate Intervention and Event Lowering in Diabetes (FIELD) study. *Eur Heart J* 31:92-99
22. Ong KL, Rye KA, O'Connell R et al (2012) Long-term fenofibrate therapy increases fibroblast growth factor 21 and retinol-binding protein 4 in subjects with type 2 diabetes. *J Clin Endocrinol Metab* 97:4701-4708
23. Scott R, Best J, Forder P et al (2005) Fenofibrate Intervention and Event Lowering in Diabetes (FIELD) study: baseline characteristics and short-term effects of fenofibrate [ISRCTN64783481]. *Cardiovasc Diabetol* 4:13
24. Taskinen MR, Sullivan DR, Ehnholm C et al (2009). Relationships of HDL cholesterol, ApoA-I, and ApoA-II with homocysteine and creatinine in patients with type 2 diabetes treated with fenofibrate. *Arterioscler Thromb Vasc Biol* 29:950-955
25. Levey AS, Bosch JP, Lewis JB, Greene T, Rogers N, Roth D (1999) A more accurate method to estimate glomerular filtration rate from serum creatinine: a new prediction equation. Modification of Diet in Renal Disease Study Group. *Ann Intern Med* 130:461-470
26. Pasta D (2009) Learning when to be discrete: continuous vs. categorical predictors. *SAS Glob Forum Pap* 248:1–10

27. Newson RB (2011) Comparing the predictive powers of survival models using Harrell's C or Somers' D. *Stata J* 10:339-358
28. Pencina MJ, D'Agostino RB Sr, D'Agostino RB Jr, Vasan RS (2008) Evaluating the added predictive ability of a new marker: from area under the ROC curve to reclassification and beyond. *Stat Med* 27:157-172
29. Pencina MJ, D'Agostino RB Sr, Steyerberg EW (2011) Extensions of net reclassification improvement calculations to measure usefulness of new biomarkers. *Stat Med* 30:11-21
30. May S, Hosmer DW (1998) A simplified method of calculating an overall goodness-of-fit test for the Cox proportional hazards model. *Lifetime Data Anal* 4:109-120
31. Shen Y, Ma X, Zhou J et al (2013) Additive relationship between serum fibroblast growth factor 21 level and coronary artery disease. *Cardiovasc Diabetol* 12:124
32. Chow WS, Xu A, Woo YC et al (2013) Serum fibroblast growth factor-21 levels are associated with carotid atherosclerosis independent of established cardiovascular risk factors. *Arterioscler Thromb Vasc Biol* 33:2454-2459
33. Lenart-Lipińska M, Matyjaszek-Matuszek B, Gernand W, Nowakowski A, Solski J (2013) Serum fibroblast growth factor 21 is predictive of combined cardiovascular morbidity and mortality in patients with type 2 diabetes at a relatively short-term follow-up. *Diabetes Res Clin Pract* 101:194-200
34. Lee Y, Lim S, Hong ES, Kim JH, et al (2014) Serum FGF21 concentration is associated with hypertriglyceridaemia, hyperinsulinaemia and pericardial fat accumulation, independently of obesity, but not with current coronary artery status. *Clin Endocrinol (Oxf)* 80:57-64
35. De Backer G, Graham I, Cooney MT (2012) Do novel biomarkers add to existing scores of total cardiovascular risk? *Eur J Prev Cardiol* 19(2 Suppl):14-17

36. Ahluwalia N, Blacher J, Szabo de Edelenyi F et al (2013) Prognostic value of multiple emerging biomarkers in cardiovascular risk prediction in patients with stable cardiovascular disease. *Atherosclerosis* 228:478-484
37. Kosola S, Lampela H, Gylling H et al (2012) Cholesterol metabolism altered and FGF21 levels high after pediatric liver transplantation despite normal serum lipids. *Am J Transplant* 12:2815-2824
38. Habegger KM, Stemmer K, Cheng C et al (2013) Fibroblast growth factor 21 mediates specific glucagon actions. *Diabetes* 62:1453-1463
39. Lin XL, He XL, Zeng JF et al (2014) FGF21 Increases Cholesterol Efflux by Upregulating ABCA1 Through the ERK1/2-PPAR γ -LXR α Pathway in THP1 Macrophage-Derived Foam Cells. *DNA Cell Biol* 33:514-521
40. Stepan H, Kley K, Hindricks J et al (2013) Serum levels of the adipokine fibroblast growth factor-21 are increased in preeclampsia. *Cytokine* 62:322-326
41. Lin Z, Zhou Z, Liu Y et al (2011) Circulating FGF21 levels are progressively increased from the early to end stages of chronic kidney diseases and are associated with renal function in Chinese. *PLoS One* 6:e18398
42. Hindricks J, Ebert T, Bachmann A et al (2014) Serum levels of fibroblast growth factor-21 are increased in chronic and acute renal dysfunction. *Clin Endocrinol (Oxf)* 80:918-924
43. Kralisch S, Tönjes A, Krause K et al (2013) Fibroblast growth factor-21 serum concentrations are associated with metabolic and hepatic markers in humans. *J Endocrinol* 216:135-143

Figure legends

Fig. 1 Association of plasma FGF21 levels at baseline with outcome events over 5 years. (a) HR values by tertile of FGF21 levels are shown for each event type; (b) cumulative first event rates over 5 years are shown by tertile for all events. All HR and *P* values were adjusted for age, sex, known diabetes duration, prior history of CVD, smoking (never, former and current), BMI, HbA_{1c}, HOMA-IR, systolic BP, HDL cholesterol, LDL cholesterol, triacylglycerol, fibrinogen, plasma creatinine and homocysteine at baseline, and treatment allocation. Error bar indicates 95% CI. White bars, FGF21 tertile 1; grey bars, FGF21 tertile 2; black bars, FGF21 tertile 3. *Significant interaction with the treatment allocation ($p < 0.05$).

Table 1 Characteristics of patients at baseline according to baseline plasma FGF21 levels

Characteristics	Tertile 1	Tertile 2	Tertile 3
	(<239.3 pg/ml)	(239.3 - <412.8 pg/ml)	(≥412.8 pg/ml)
n	3,232	3,233	3,232
FGF21 (pg/ml)	170 (127-205)	316 (276-360)	585 (482-786)
Age (years)	61.8±6.8	62.3±6.9	62.6±6.9
Male	2,247 (69.5%)	2,044 (63.2%)	1,787 (55.3%)
White	3,031 (94.1%)	3,044 (94.4%)	3,067 (95.1%)
Current smoker	262 (8.1%)	281 (8.7%)	372 (11.5%)
Ex-smoker	1,590 (49.2%)	1,649 (51.0%)	1,655 (51.2%)
Prior history of CVD	580 (17.9%)	700 (21.7%)	822 (25.4%)
Known diabetes duration (years)	6 (3-10)	5 (2-10)	5 (2-9)
BMI (kg/m ²)	28.5 (25.8-31.8)	30.0 (27.0-33.5)	31.1 (27.9-35.4)
Waist-to-hip ratio	0.93 (0.88-0.98)	0.94 (0.89-0.98)	0.94 (0.88-0.99)
Fasting insulin (pmol/l)	60 (37-90)	72 (48-108)	90 (60-132)
Fasting glucose (mmol/l)	8.3 (6.9-10.1)	8.4 (7.0-10.2)	8.7 (7.2-10.6)
HbA _{1c} (%)	6.8 (6.1-7.8)	6.8 (6.1-7.7)	7.0 (6.2-7.9)
HbA _{1c} (mmol/mol)	50.8 (42.6-61.2)	50.8 (42.6-60.7)	52.5 (43.7-62.8)
HOMA-IR	1.44 (0.97-2.17)	1.76 (1.17-2.58)	2.16 (1.47-3.13)
Systolic BP (mmHg)	139±15	141±15	142±15
Diastolic BP (mmHg)	82±9	82±8	82±8
Total cholesterol (mmol/l)	5.00±0.68	5.06±0.70	5.05±0.72
HDL cholesterol (mmol/l)	1.13±0.27	1.09±0.25	1.07±0.25
LDL cholesterol (mmol/l)	3.12±0.62	3.09±0.65	2.99±0.68
Triacylglycerol (mmol/l)	1.50 (1.20-1.95)	1.76 (1.38-2.30)	1.99 (1.55-2.69)
Apolipoprotein A-I (g/l)	1.30±0.21	1.29±0.21	1.29±0.21
Apolipoprotein A-II (g/l)	0.35±0.07	0.35±0.07	0.35±0.07
Apolipoprotein B (g/l)	0.95±0.16	0.98±0.17	0.99±0.18
Fibrinogen (g/l)	3.58±0.71	3.60±0.76	3.60±0.77

Plasma creatinine ($\mu\text{mol/l}$)	77.1 \pm 14.6	77.3 \pm 15.7	78.4 \pm 16.9
Homocysteine ($\mu\text{mol/l}$)	9.2 (7.8-11.1)	9.5 (8.0-11.3)	10.0 (8.2-12.2)
Estimated GFR ($\text{ml min}^{-1} 1.73 \text{ m}^{-2}$)	89.7 \pm 17.5	88.2 \pm 18.4	85.2 \pm 19.0

Data are expressed as mean \pm SD, *n* (%) or median (IQR).

Table 2 Association of plasma FGF21 levels at baseline with outcome events over 5 years

Outcomes	HR (95% CI)	
	Model 1 ^a	Model 2 ^b
Primary outcome:		
Total CVD events		
All subjects		
Tertile 2	1.35 (1.17, 1.55)	1.28 (1.10, 1.48)
Tertile 3	1.45 (1.27, 1.67)	1.28 (1.10, 1.50)
Overall effect <i>p</i>	<0.001	0.002
<i>p</i> for treatment interaction	0.07	0.04
Placebo		
Tertile 2	1.55 (1.27, 1.88)	1.52 (1.24, 1.88)
Tertile 3	1.49 (1.23, 1.81)	1.35 (1.08, 1.69)
Overall effect <i>p</i>	<0.001	<0.001
Fenofibrate		
Tertile 2	1.15 (0.94, 1.41)	1.04 (0.84, 1.30)
Tertile 3	1.42 (1.17, 1.72)	1.21 (0.97, 1.51)
Overall effect <i>p</i>	0.002	0.19
Secondary outcomes:		
CHD event		
Tertile 2	1.29 (1.04, 1.61)	1.16 (0.92, 1.47)
Tertile 3	1.60 (1.29, 1.98)	1.23 (0.97, 1.57)
Overall effect <i>p</i>	<0.001	0.23
<i>p</i> for treatment interaction	0.66	0.48
Total stroke		
Tertile 2	1.47 (1.10, 1.95)	1.39 (1.02, 1.89)
Tertile 3	1.75 (1.32, 2.30)	1.48 (1.08, 2.03)
Overall effect <i>p</i>	<0.001	0.04

<i>p</i> for treatment interaction	0.47	0.30
CVD mortality		
Tertile 2	1.32 (0.96, 1.82)	1.11 (0.79, 1.57)
Tertile 3	1.72 (1.27, 2.33)	1.14 (0.80, 1.62)
Overall effect <i>p</i>	0.002	0.75
<i>p</i> for treatment interaction	0.51	0.35
Coronary & carotid revascularisation		
Tertile 2	1.43 (1.18, 1.72)	1.37 (1.12, 1.67)
Tertile 3	1.32 (1.09, 1.60)	1.26 (1.01, 1.56)
Overall effect <i>p</i>	<0.001	0.007
<i>p</i> for treatment interaction	0.14	0.28
Tertiary outcomes:		
Hospitalisation for angina pectoris		
Tertile 2	1.62 (1.27, 2.07)	1.42 (1.10, 1.84)
Tertile 3	1.82 (1.43, 2.32)	1.51 (1.15, 1.98)
Overall effect <i>p</i>	<0.001	0.007
<i>p</i> for treatment interaction	0.77	0.48

For all the outcomes, tertile 1 was the referent group for comparison.

^aAdjusted for treatment allocation.

^bFurther adjusted for age, sex, known diabetes duration, prior history of CVD, smoking (never, former and current), BMI, HbA_{1c}, HOMA-IR, systolic BP, HDL cholesterol, LDL cholesterol, triacylglycerol, fibrinogen, plasma creatinine and homocysteine at baseline.

Table 3 Assessing the incremental value of log_e-transformed FGF21 levels using integrated discrimination improvement and net reclassification improvement

Outcome	IDI	95% CI	NRI (>0)	95% CI	Event NRI ^a	Nonevent NRI ^b
Total CVD events						
All subjects	0.001 ^c	0.000, 0.003	10.9% ^c	2.8%, 17.0%	5.4%	5.5%
Placebo	0.005 ^c	0.000, 0.005	13.8% ^c	2.4%, 23.1%	9.4%	4.3%
Fenofibrate	0.000	0.000, 0.003	6.3%	-6.2%, 17.3%	0.8%	5.5%
CHD event	0.000	0.000, 0.002	8.4%	-8.5%, 17.9%	4.8%	3.7%
Total stroke	0.001 ^c	0.000, 0.004	17.1% ^c	3.4%, 29.0%	10.7%	6.4%
CVD mortality	0.001	0.000, 0.008	4.4%	-8.7%, 22.7%	-1.6%	6.0%
Coronary & carotid revascularisation	0.000	0.000, 0.002	8.5%	-4.5%, 15.9%	4.1%	4.4%
Hospitalisation for angina pectoris	0.000	0.000, 0.003	12.4% ^c	1.4%, 20.9%	6.4%	6.0%

Comparison are to be made for the addition of FGF21 (log_e-transformed) to a model containing treatment allocation, age, sex, known diabetes duration, prior history of CVD, smoking (never, former and current), BMI, HbA_{1c}, HOMA-IR, systolic BP, HDL cholesterol, LDL cholesterol, triacylglycerol, fibrinogen, plasma creatinine and homocysteine at baseline.

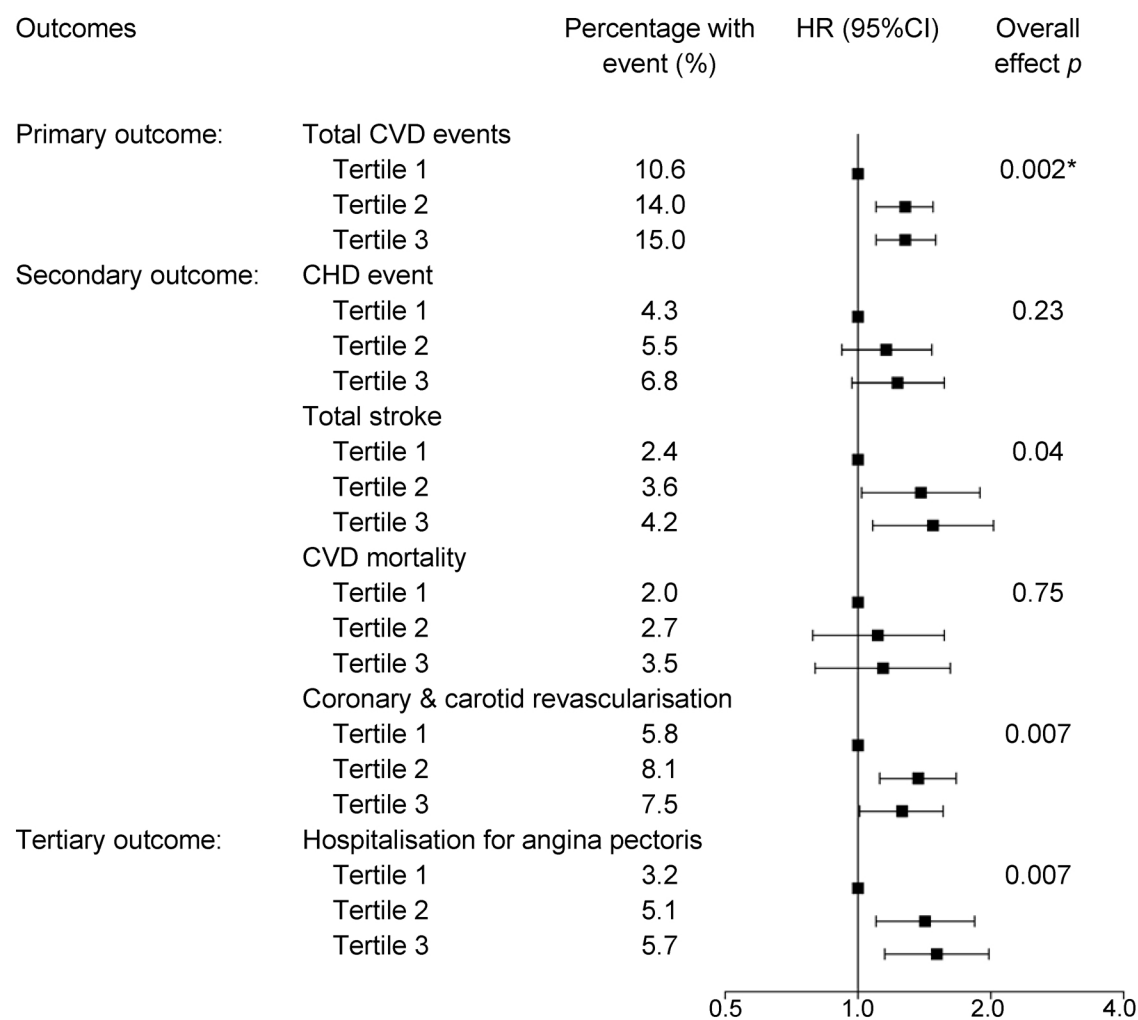
The category-less NRI(>0) was calculated to quantify the improvement gained due to correct upward or downward change in predicted risks and is calculated as the proportion of event patients with correct upward or downward change minus incorrect upward or downward change plus the corresponding proportion among non-event patients. The IDI was calculated to measure the difference in discrimination slopes between models.

The discrimination slope is the mean predicted risk of event among event patients minus the mean predicted risk of event among non-event patients and thus provides a measure of separation in predicted probabilities for event and nonevent. Values above zero for the NRI and IDI indicate improved risk prediction and discrimination with the addition of FGF21 to the model.

^aPercentage correctly reclassified among subjects who had events.

^bPercentage correctly reclassified among subjects who did not have events.

^c $p < 0.05$.

a

b

