



# DOCUMENTING CHANGE IN AN URBAN FOREST RESTORATION PROJECT



Presented by:

**Janelle St. Pierre, Portland Parks & Recreation**

**Adriana Escobedo-Land, West Willamette Restoration Partnership**

# WHO WE ARE



- City of Portland
  - Portland Parks & Recreation
  - Bureau of Environmental Services
- West Multnomah Soil & Water Conservation District
- Friend of Marquam Nature Park
- Friends of Terwilliger Parkway
- Columbia Land Trust
- Southwest Watershed Resource Center
- Oregon Health & Science University
- includes a broad network of project and regional partners

[www.westwillamette.org/](http://www.westwillamette.org/)

# THE CORRIDOR

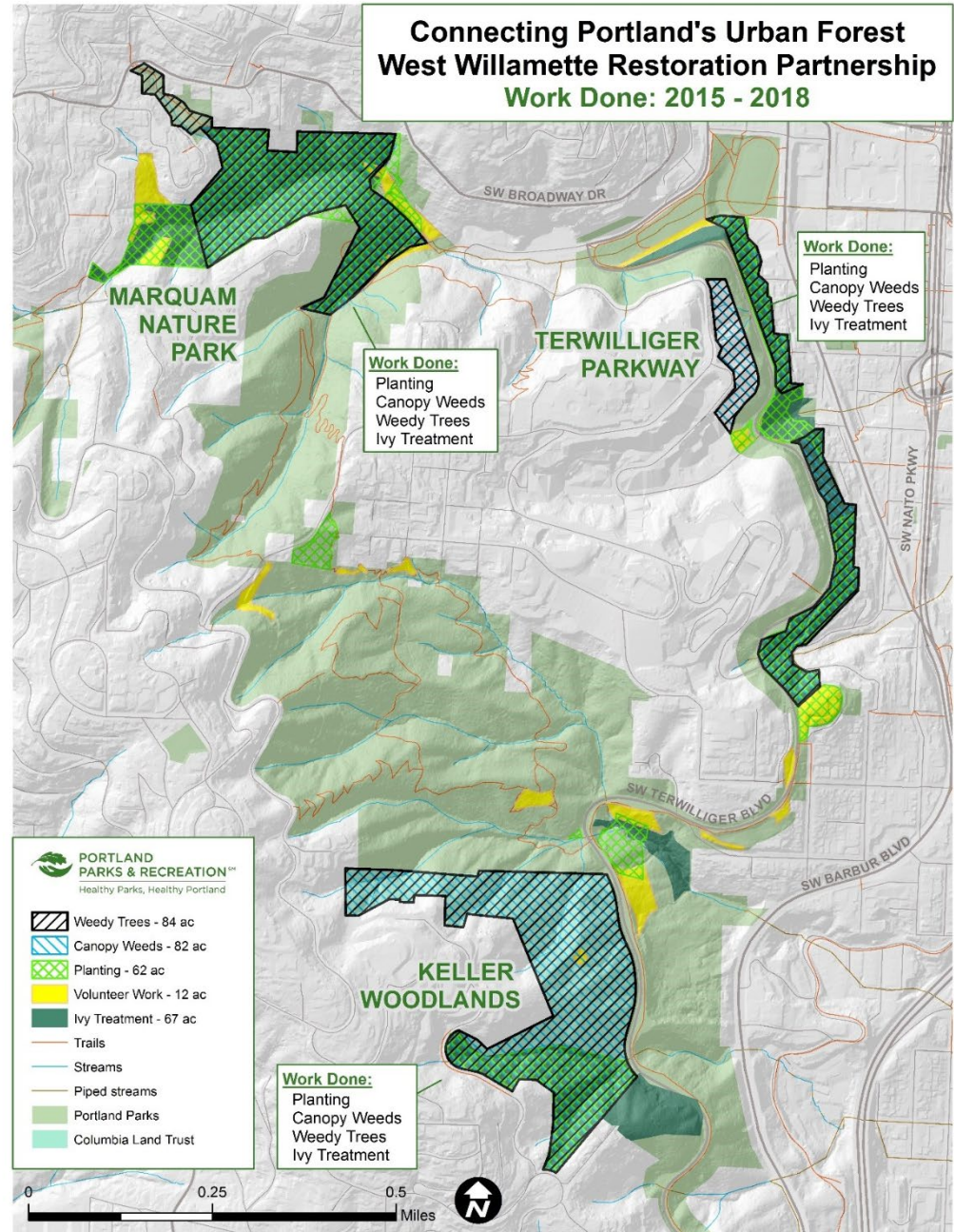
- Westside Wildlife Corridor: a corridor along the west hills that includes natural habitats and streams between Tryon Creek State Natural Area and Forest Park
- Project area provides critical link in urban core
- Working to enhance the functionality of the corridor and provide stewardship opportunities and sustainable access to nature



*ArcGIS Story Map created by Andrew Addressi  
Portland State University*

# PROJECT OUTCOMES

- 80 + acres treated for:
  - Weedy trees
  - Canopy weeds
  - Ground ivy (crews and volunteers)
- 60 + acres planted with over 25,000 native trees and shrubs
- Engage with diverse volunteer stewards from across the Portland-Metro region



Map created by Kaitlyn Zurcher

# PHOTO POINT MONITORING

- Designed to visually document landscape change over time
- PP&R and Columbia Land Trust are currently monitoring sites in the spring and late fall





**Terwilliger volunteer area May 2016 (before) and May 2018 (after)**



**Marquam contract crew treatment May 2016 (before) and May 2018 (after)**

# UNIFIED MONITORING PROTOCOL

- Developed through a cooperative effort by the Greater Forest Park Conservation Initiative
- Documenting changes in plant species composition and coverage
- Uses transects to collect information on plant species cover, trees per acre, and dead wood



May 2018



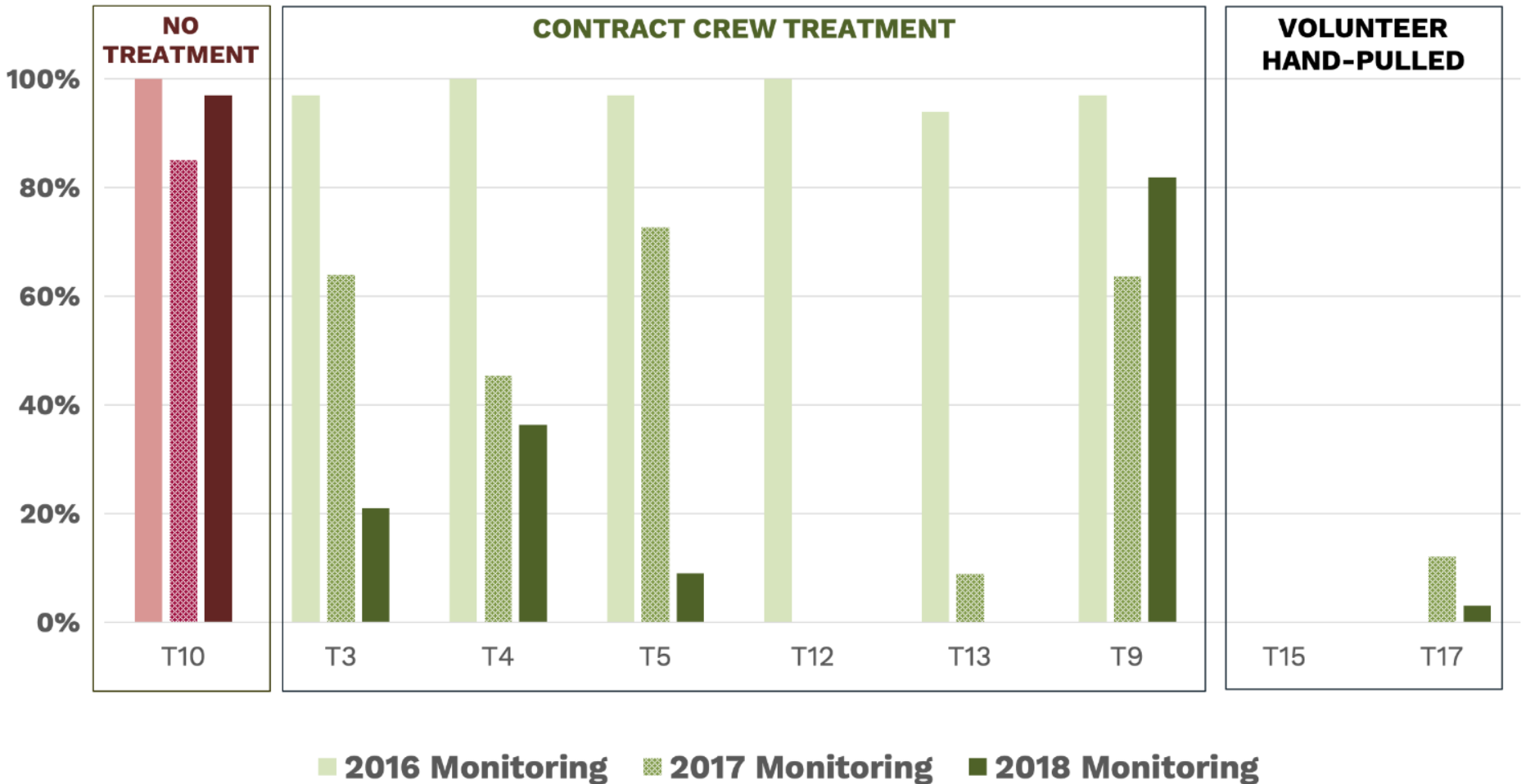
*Robin Jensen*  
***Friends of Marquam Nature Park***



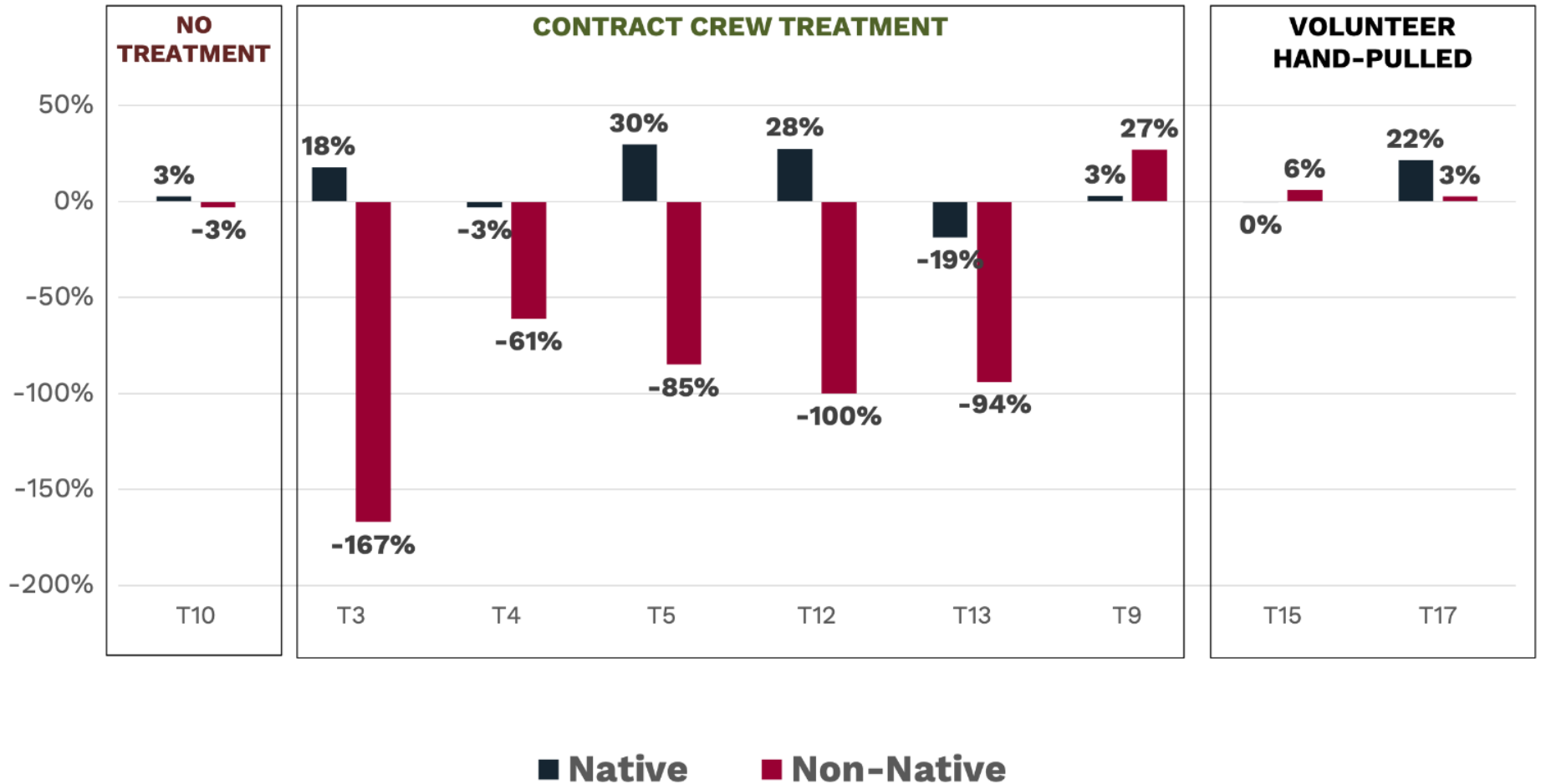
*Adriana Escobedo-Land*  
***WWRP Coordinator***



# Percent of Transect with Ivy (*Hedera sp.*) Detected following Treatment



# Net Change 2016-2018 by Transect: Proportion of Plant Species following Treatment



# NEXT STEPS

- Continued restoration in the corridor
- Continue to monitor vegetation transects with PSU and community partners
- Land managers will continue to conduct photo point monitoring
- Share data with regional partners



QUESTIONS?

[Janelle.St.Pierre@portlandoregon.gov](mailto:Janelle.St.Pierre@portlandoregon.gov)

[WWRPCoordinator@gmail.com](mailto:WWRPCoordinator@gmail.com)



**PORTLAND PARKS & RECREATION**

Healthy Parks, Healthy Portland

*Funded in part by Metro Nature in Neighborhoods Grant Program and partner contributions.*