

# Mapping oak within the RCS boundary

Lori Hennings



Metro



# The Oak Prairie Work Group

- 41 partner organizations
- Active since 2011
- Quarterly meetings
- Strategic Action Plan





# Funding partners

- Metro
- US Fish and Wildlife Service
- Oregon Wildlife Heritage Foundation
- Oregon Department of Forestry / USFS
- Clackamas and Tualatin SWCDs
- Siletz Tribal Youth Education and Employment (TYEE)





# Overarching goals

- High quality Oregon white oak map

## *Uses:*

- Update RCS maps
- Prioritize important oak habitat/connectivity
- Support effective:
  - Collaborative habitat protection
  - Stewardship
  - Education



# Context

- Large geographic extent: 2,000+ sq mi (Oregon side)
- Complex land cover
- PDX: 164 varieties of street trees!
- Tiny portion is QUGA





# Process

- 2012: collected field samples
- 2014-15: community science, pro field work
- 2015-16: create remote sensing oak model
- ☹️ models over- or under-counted oaks
  
- **2017: Decided to map by hand using aerials**
- Completion date: June 2018 (OR side)



# Results

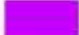

- Data characteristics / issues
  - Points, not trees
  - Consistency (several people mapped)
  - Aerial photo quality
  - Limited false positives but some missed trees
  - Likely caught all significant oak stands
  - Omitted highest elevation areas

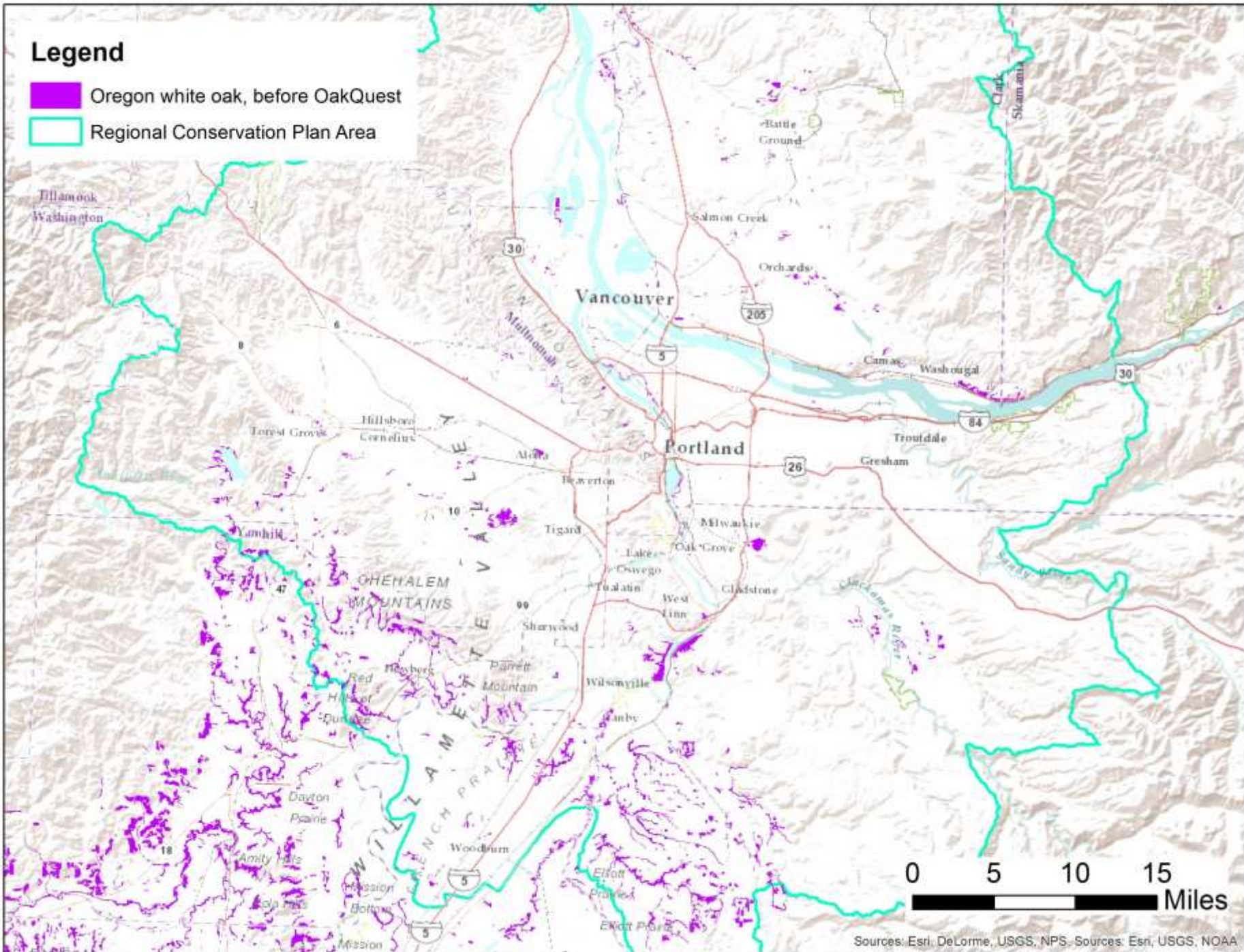
**Only ~10% of oaks are protected**





# Legend

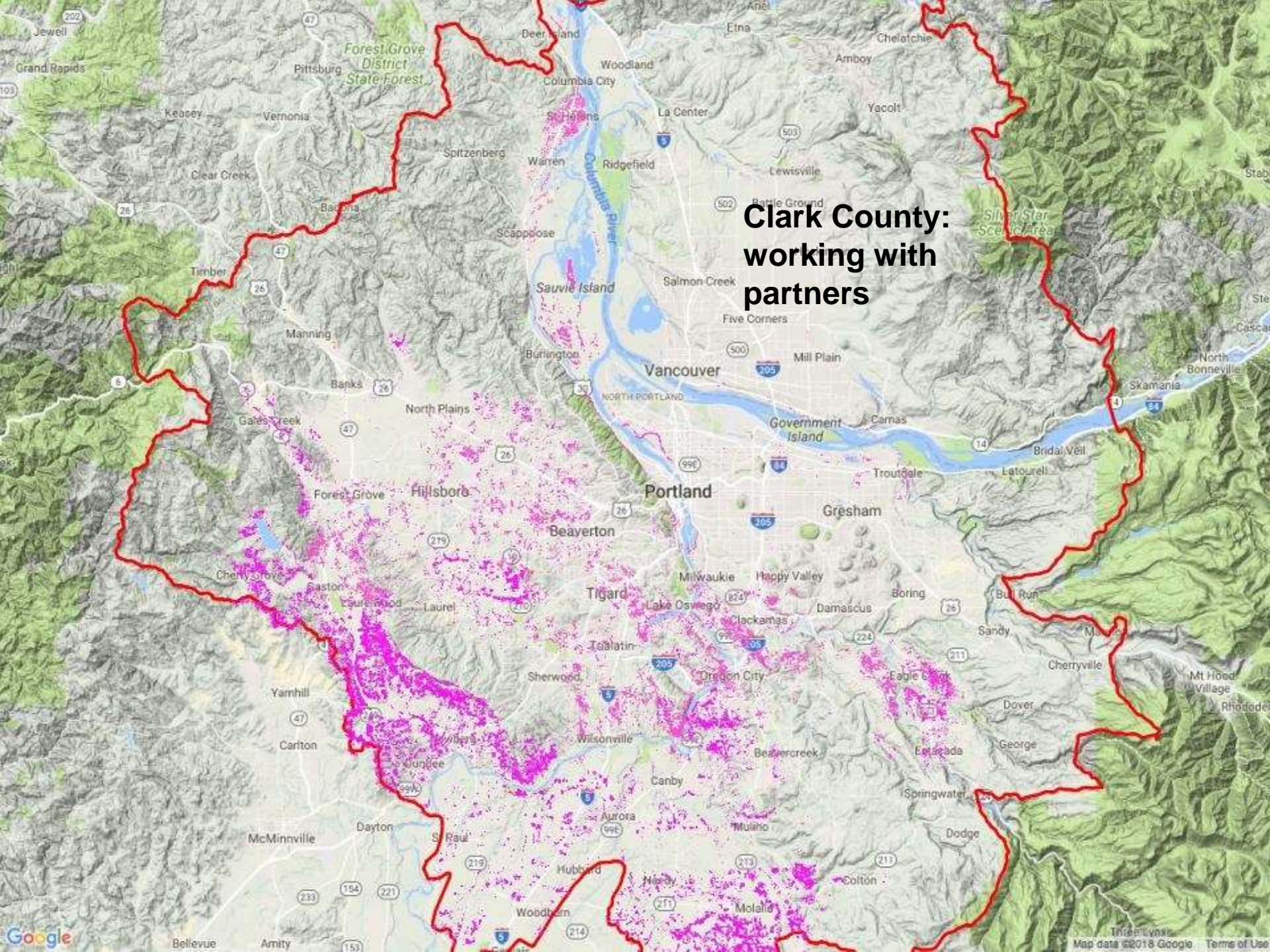
-  Oregon white oak, before OakQuest
-  Regional Conservation Plan Area



Sources: Esri, DeLorme, USGS, NPS, Sources: Esri, USGS, NOAA




**Clark County:  
working with  
partners**

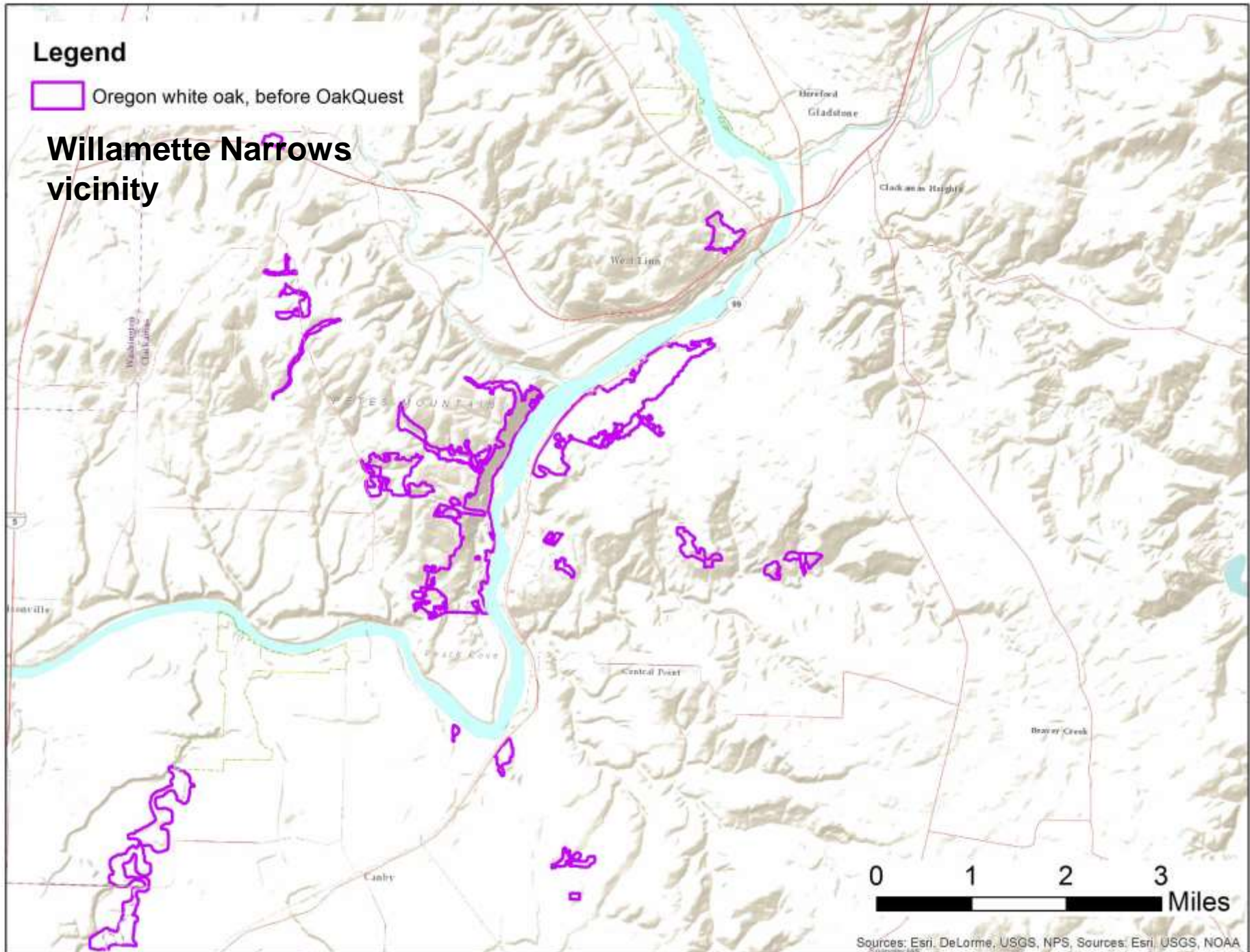




# Legend

 Oregon white oak, before OakQuest



## Willamette Narrows vicinity



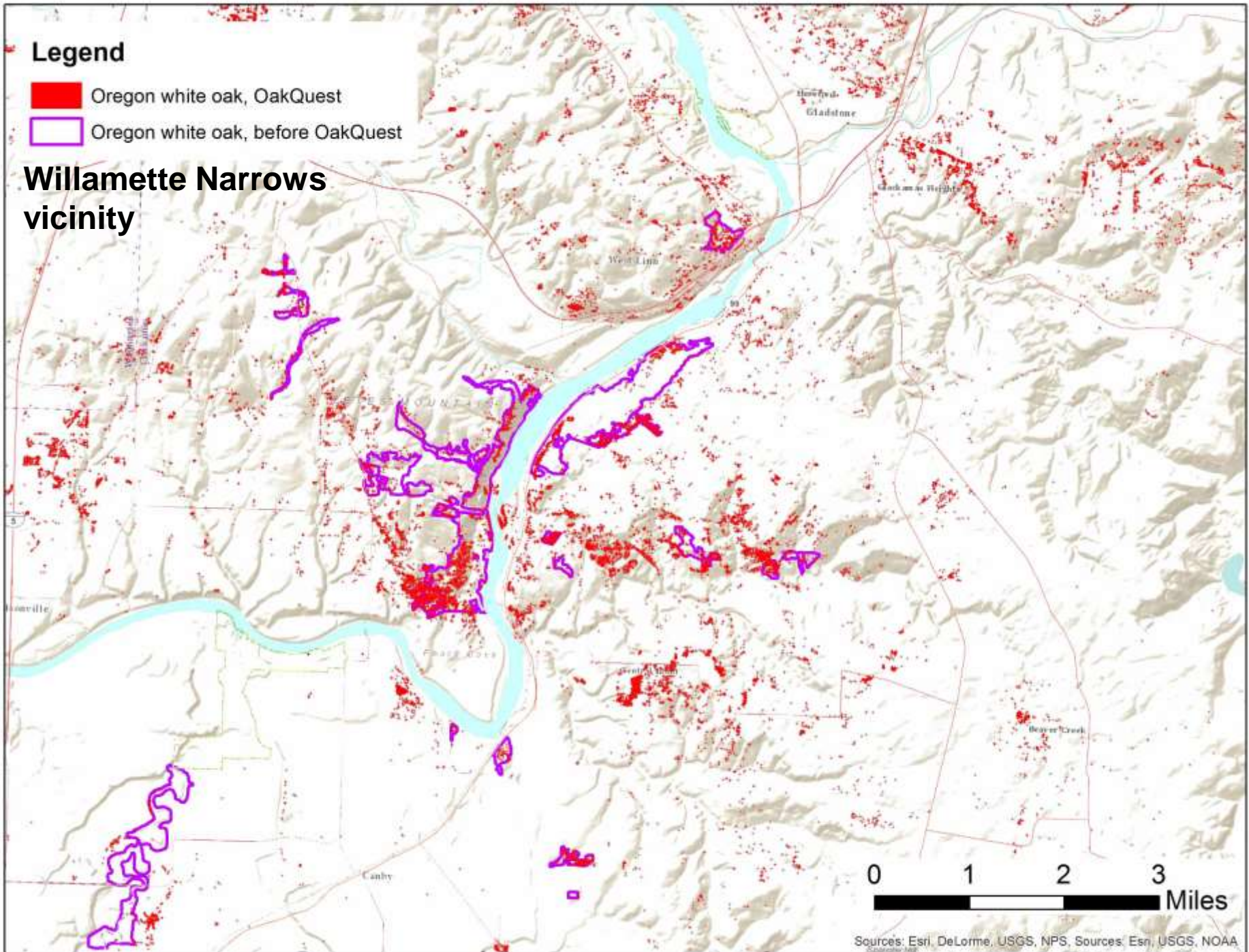
0 1 2 3 Miles  
Sources: Esri, DeLorme, USGS, NPS, Sources: Esri, USGS, NOAA



## Legend


-  Oregon white oak, OakQuest
-  Oregon white oak, before OakQuest

## Willamette Narrows vicinity

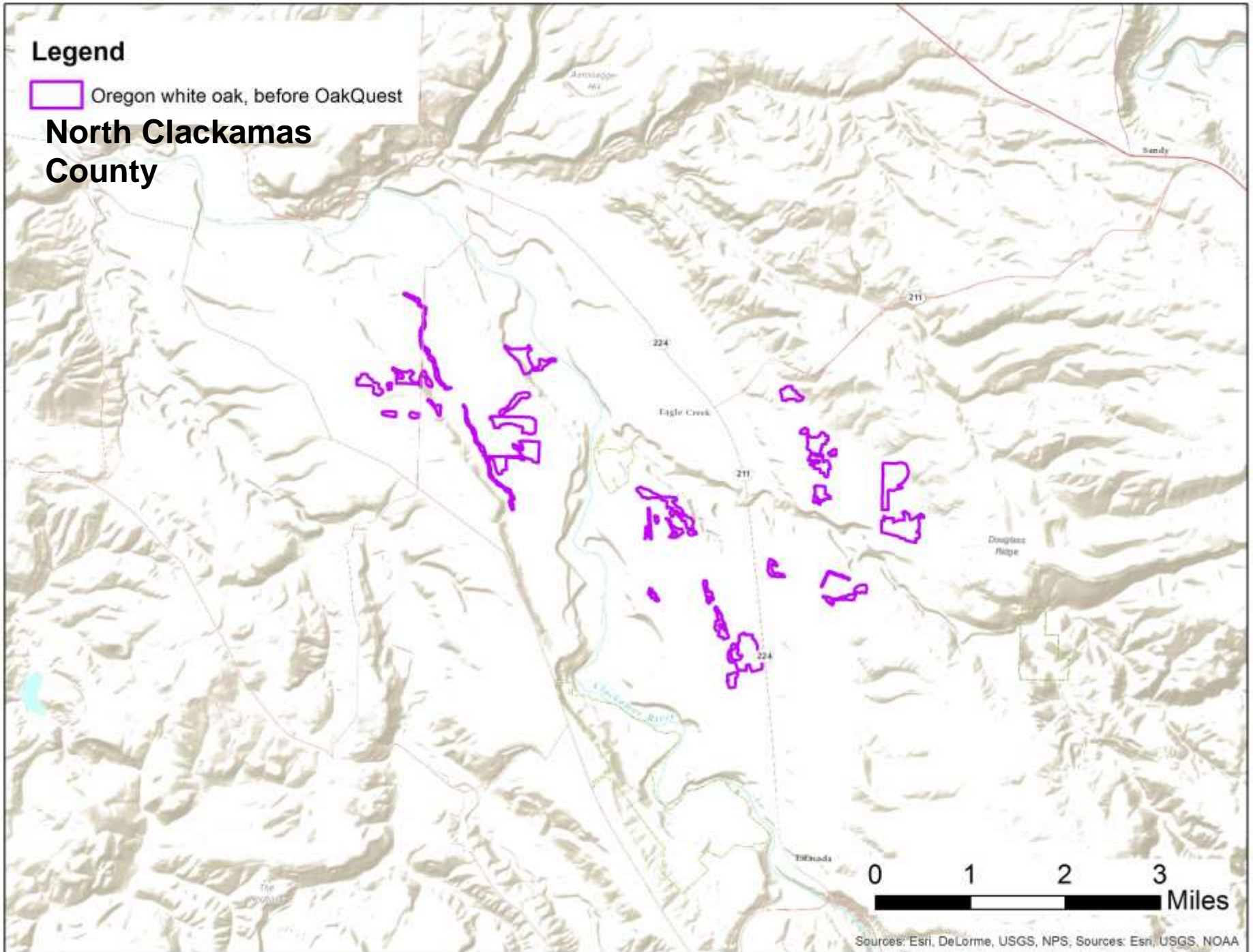




# Legend



 Oregon white oak, before OakQuest

# North Clackamas County

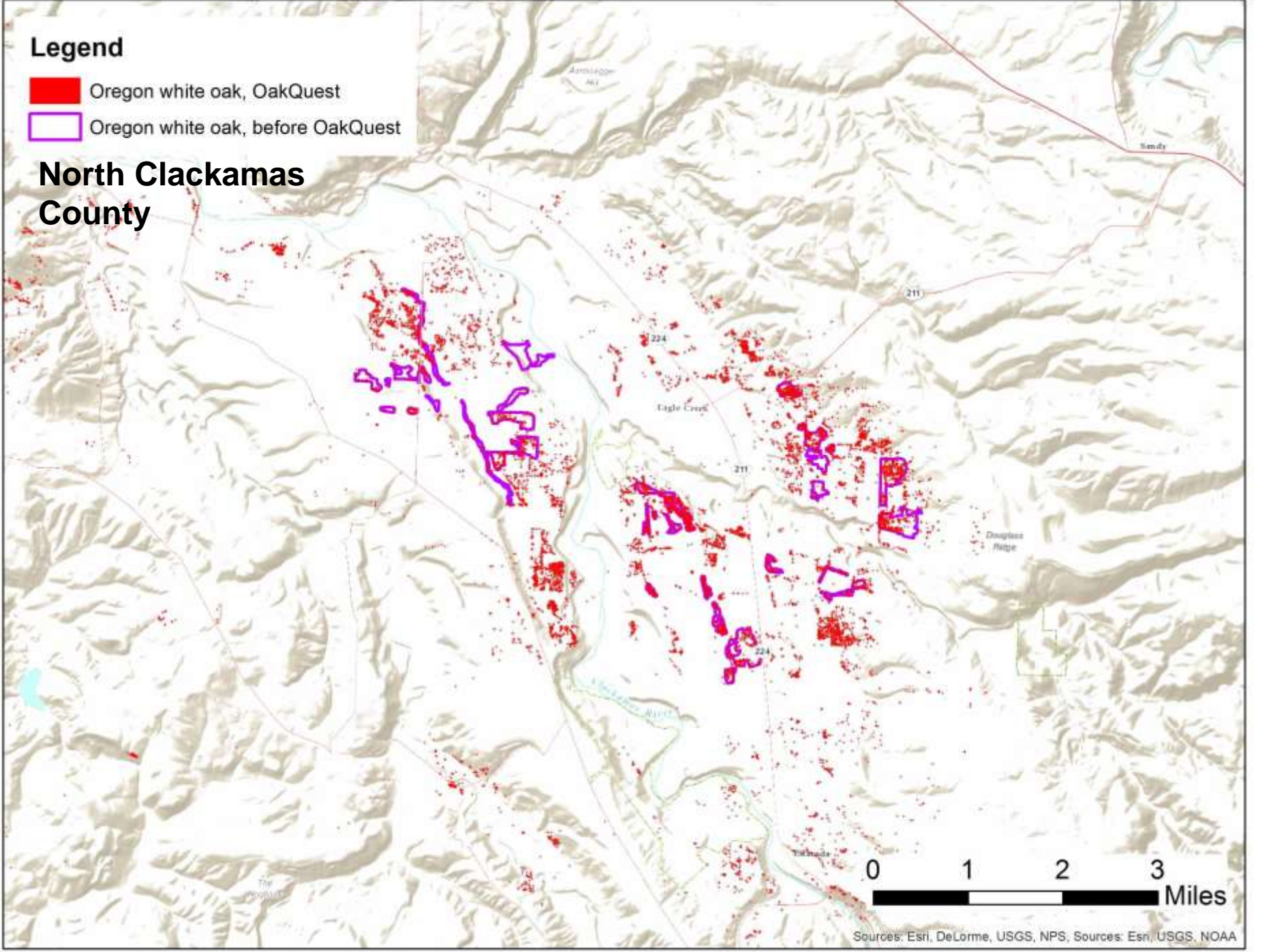




# Legend


-  Oregon white oak, OakQuest
-  Oregon white oak, before OakQuest

## North Clackamas County





# Legend

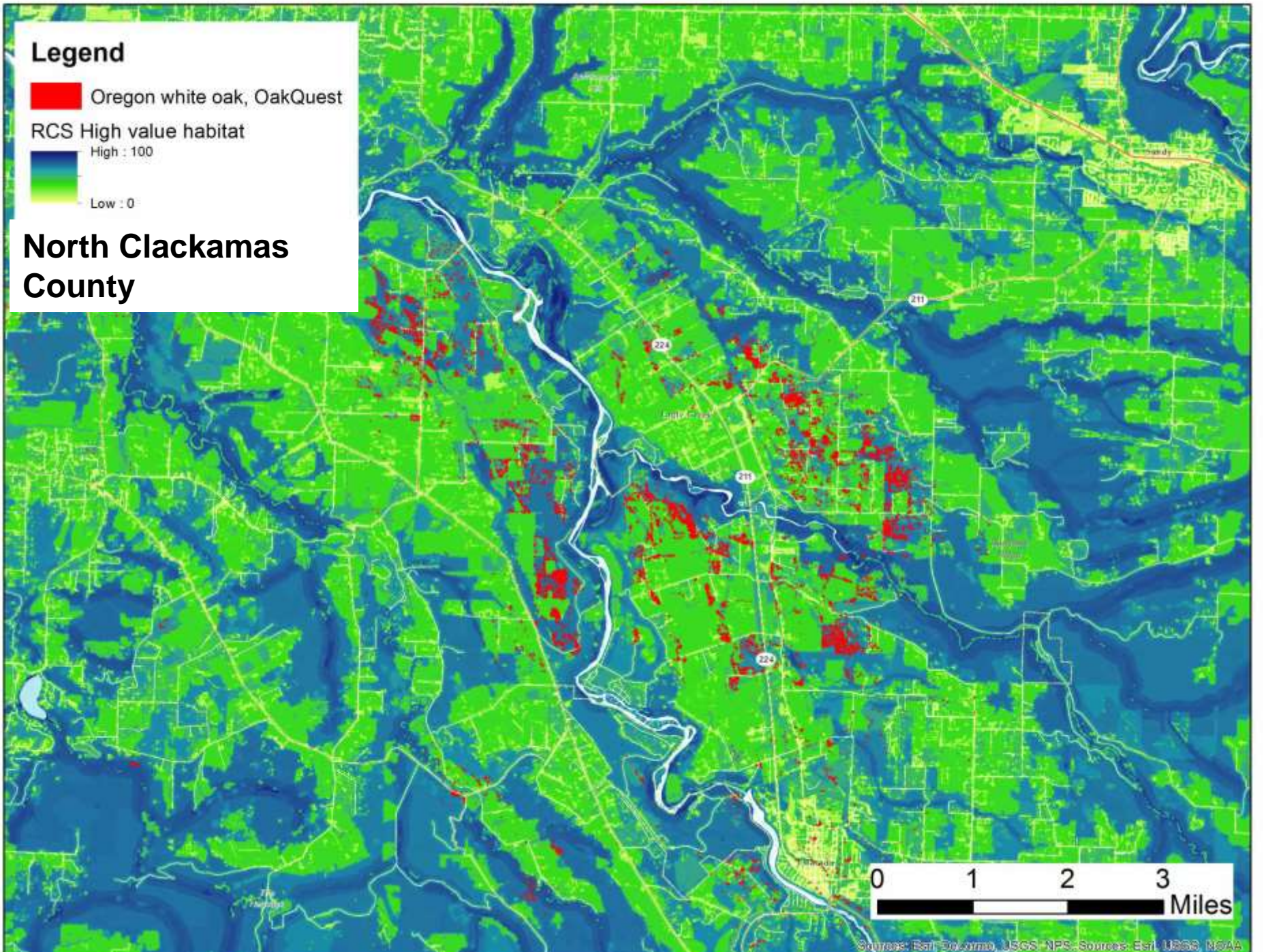
 Oregon white oak, OakQuest

RCS High value habitat

 High : 100

 Low : 0


# North Clackamas County



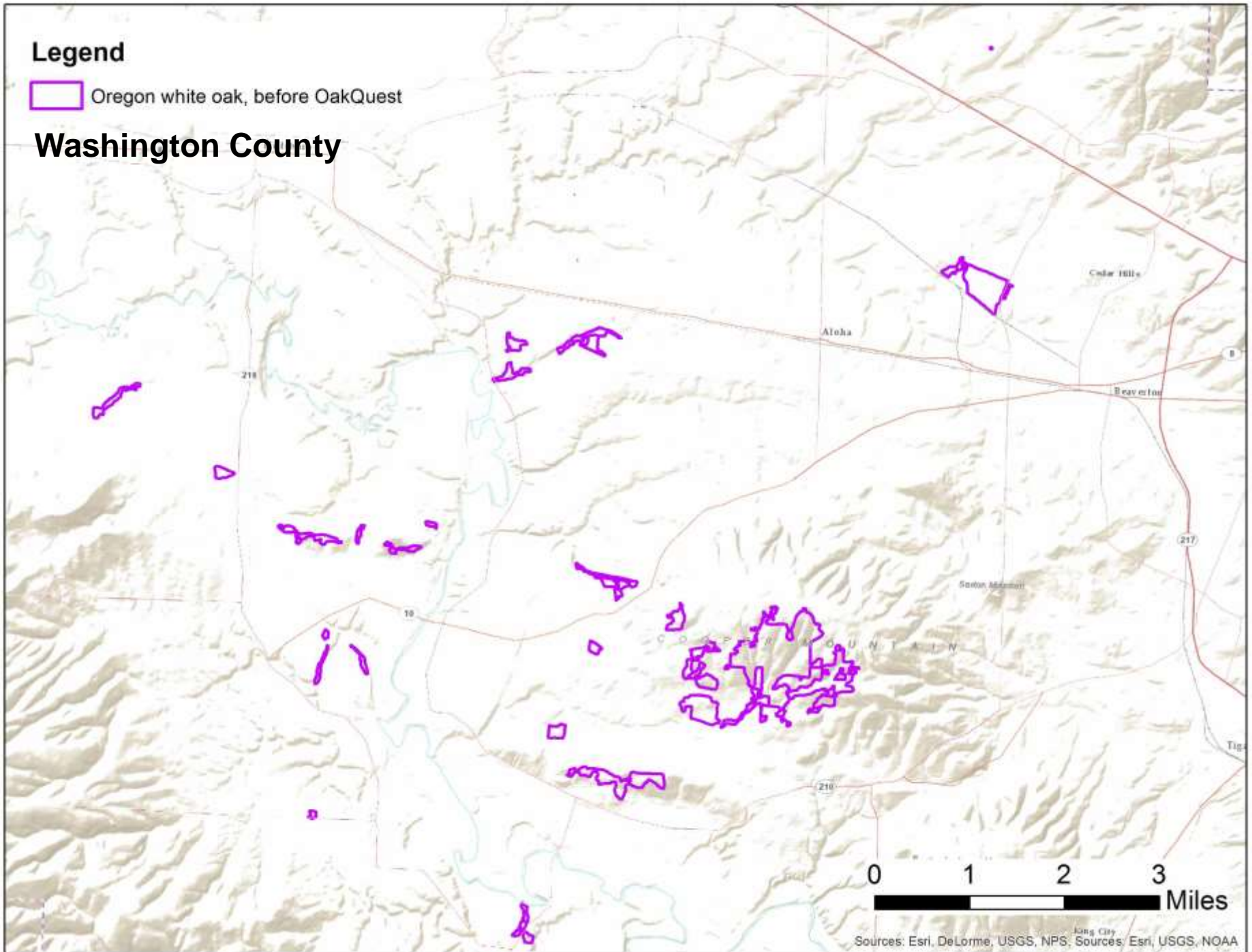
Sources: Esri, DeLorme, USGS, NPS, Sources: Esri, USGS, NOAA





# Legend

 Oregon white oak, before OakQuest

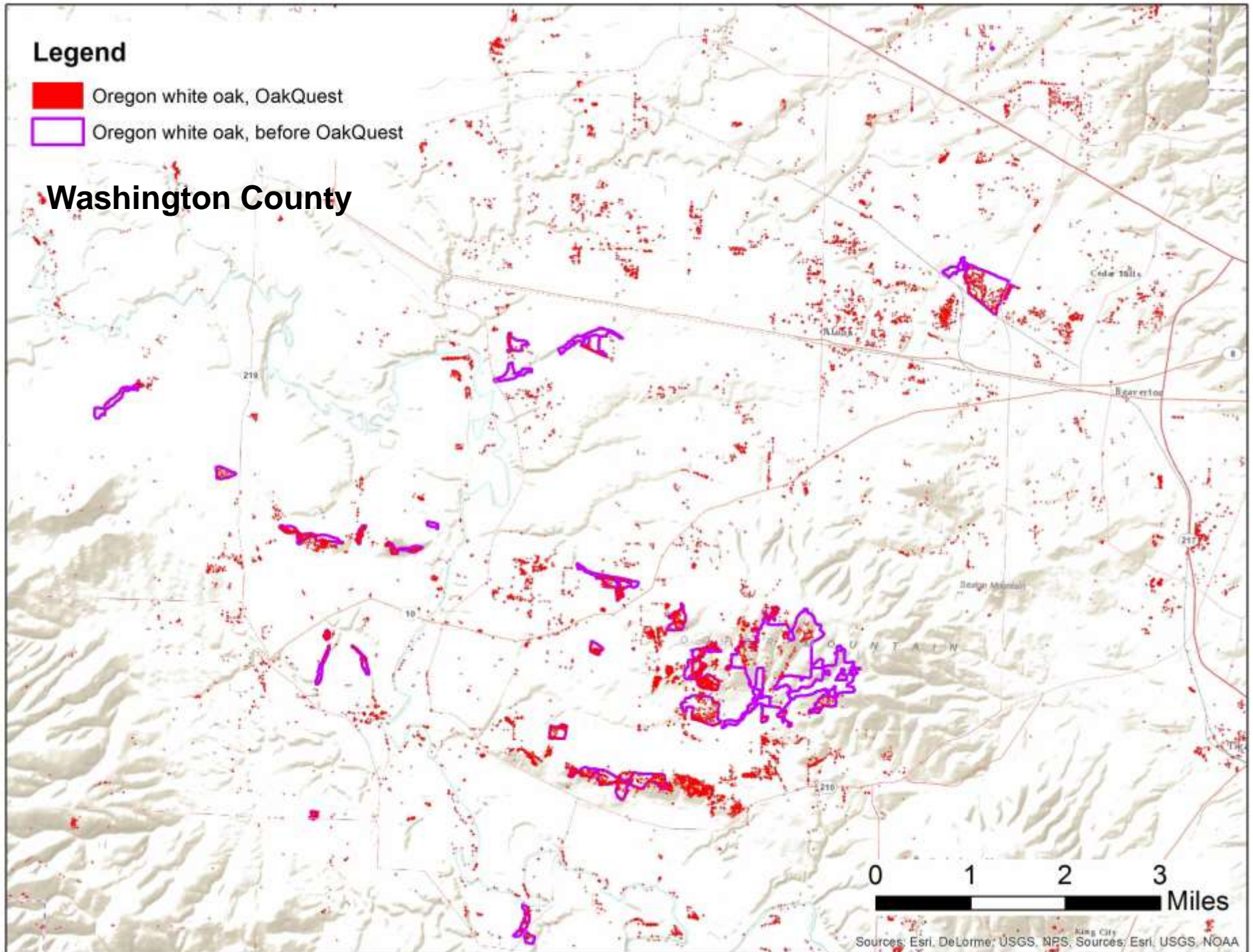
# Washington County



## Legend

-  Oregon white oak, OakQuest
-  Oregon white oak, before OakQuest

## Washington County



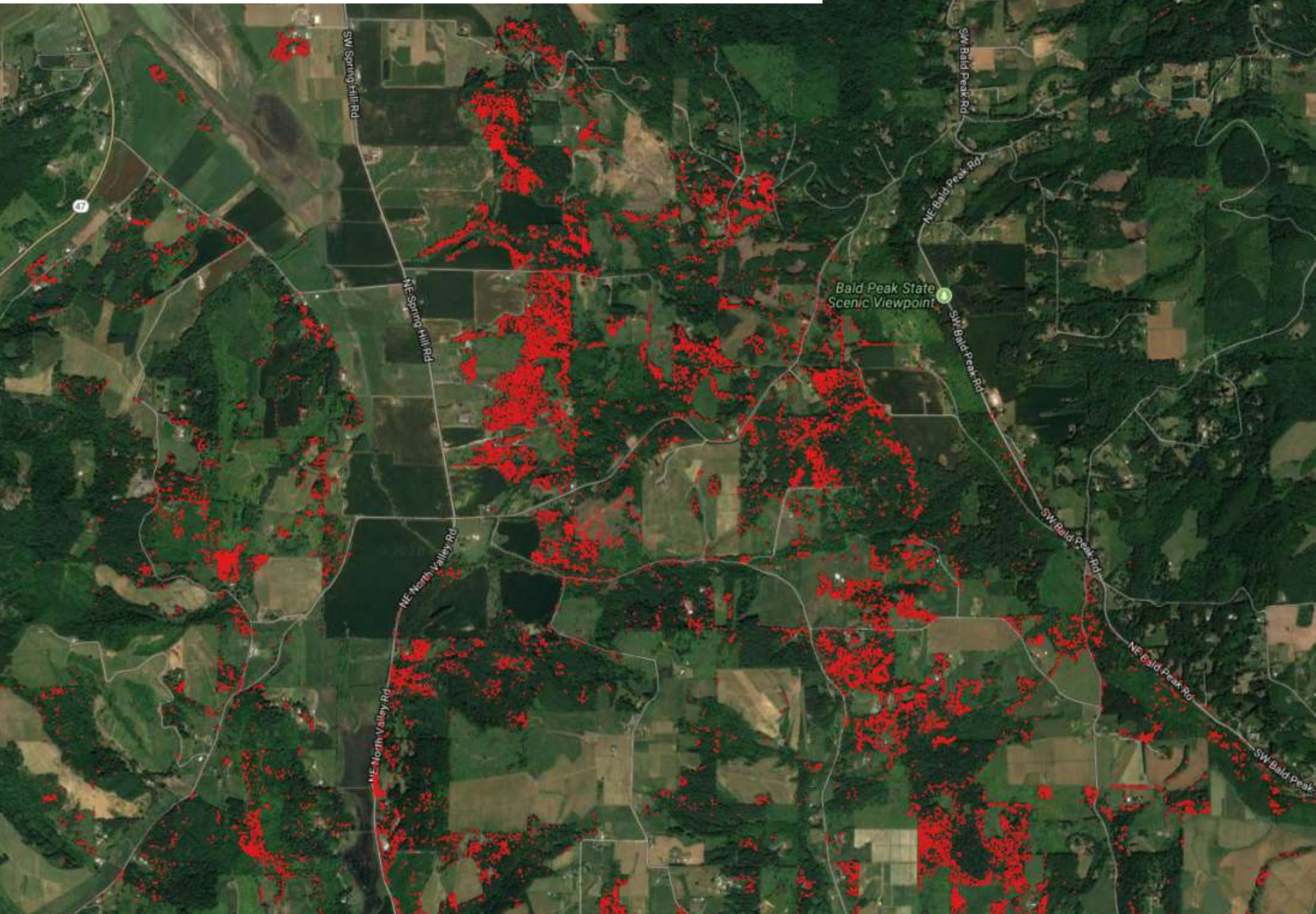


# Tualatin Hills NP – Nike Woods



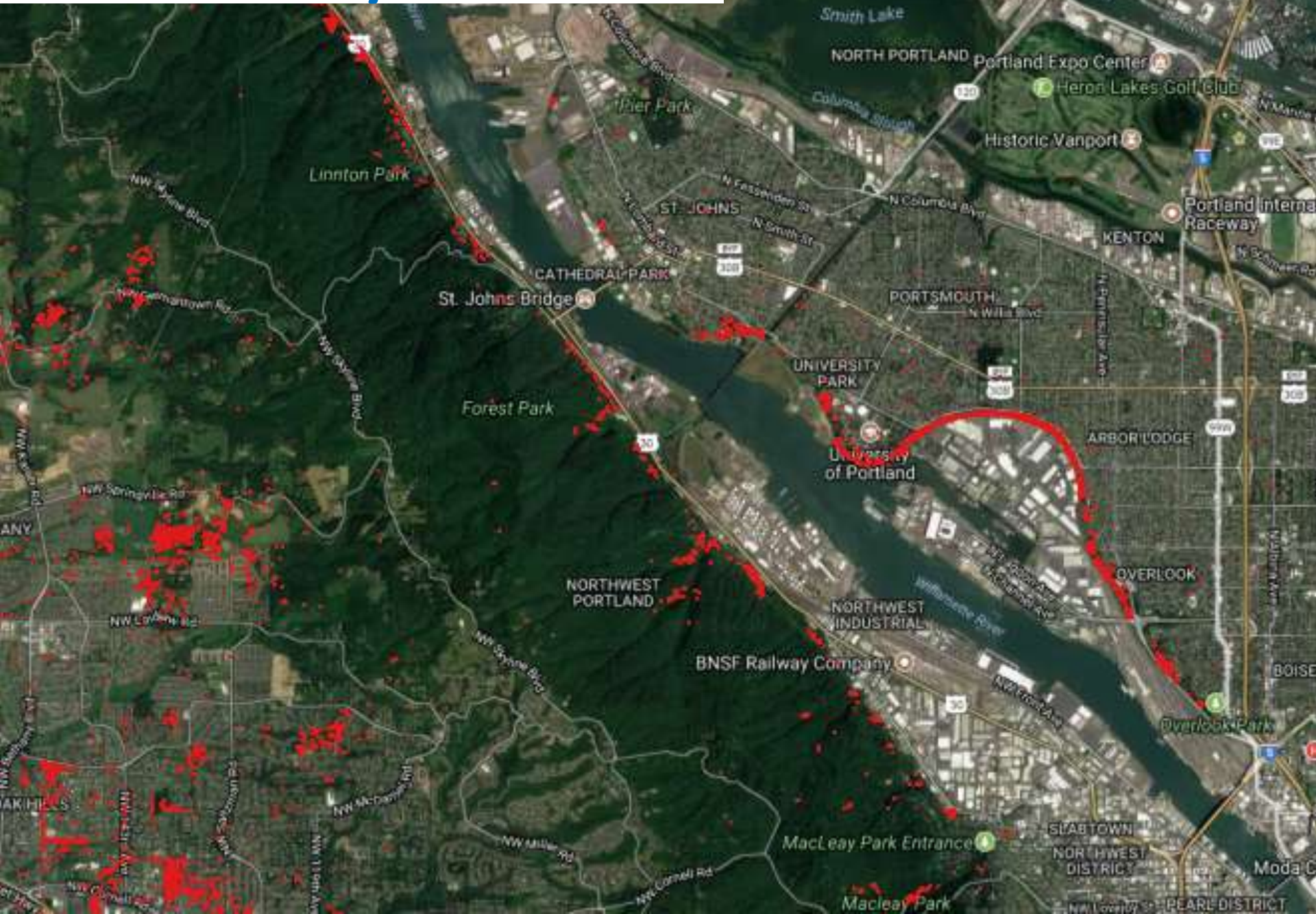


# Chehalem Mountain area



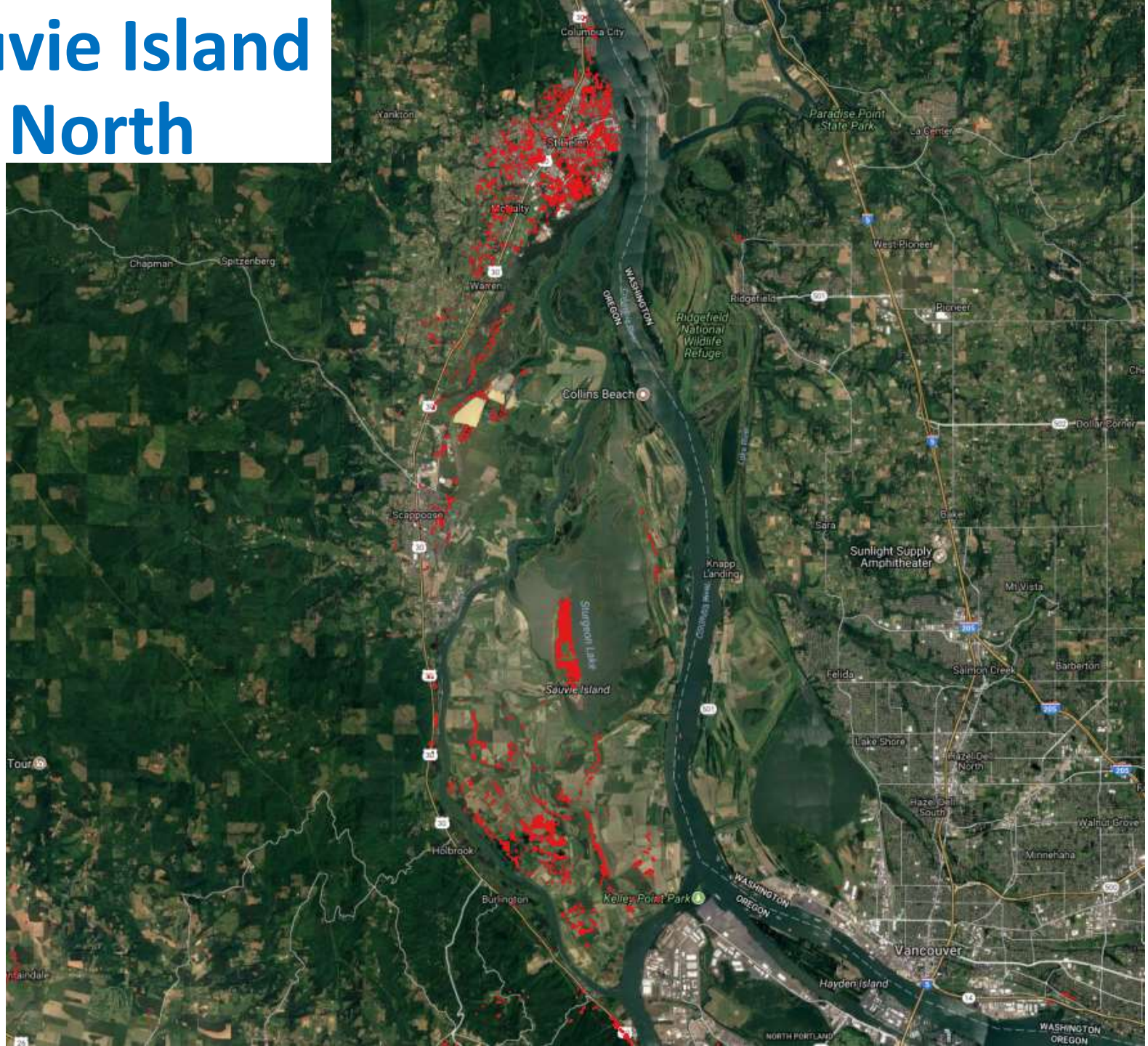


# Forest Park / Overlook



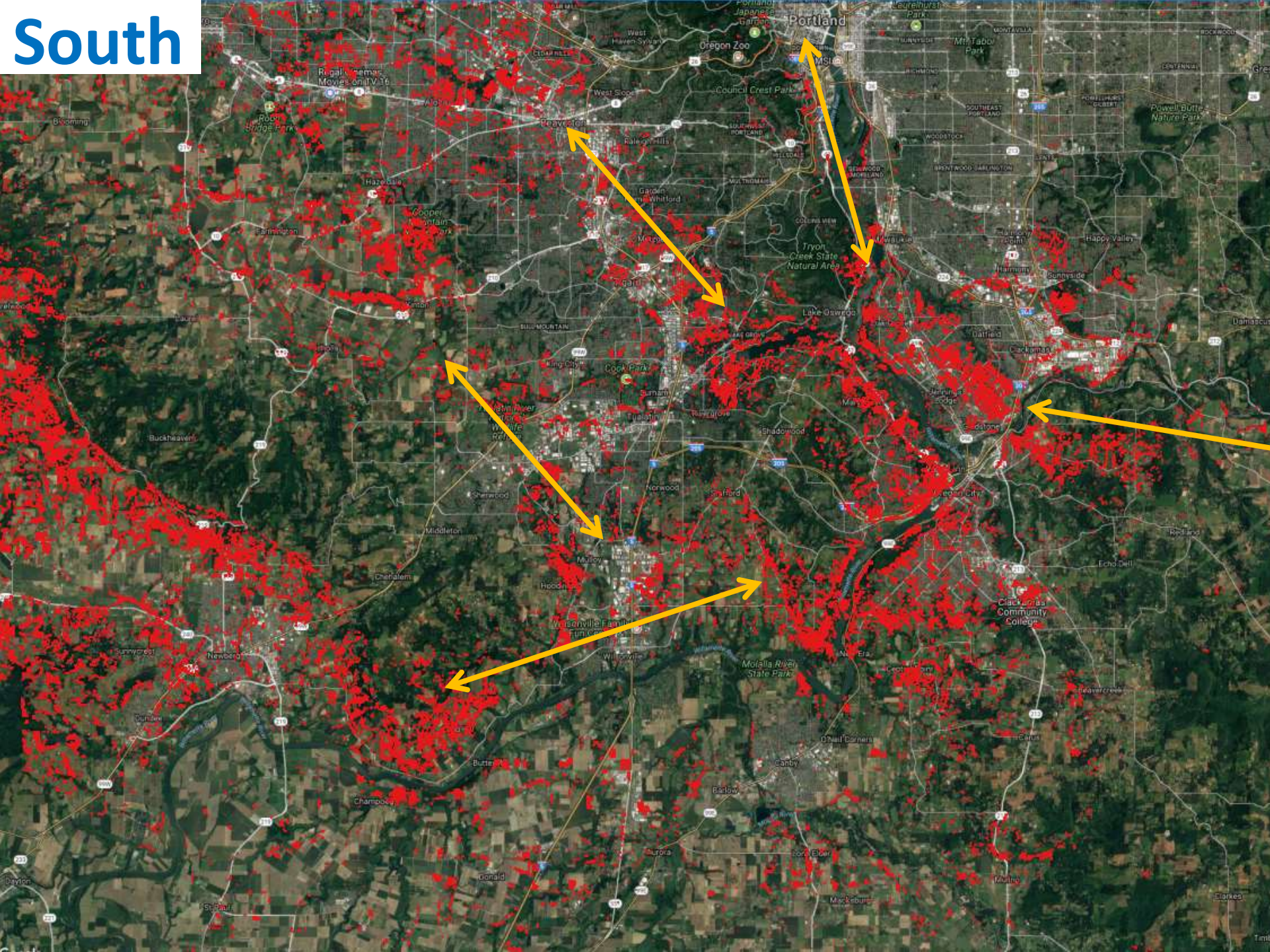


# Sauvie Island & North





# South





# Oak rich neighborhoods - SE





# Strategic Action Plan (2018)

- Steering committee
- Small work groups for each element
- **Elements**
  - Spatial data
  - Conserve land
  - Practice active stewardship
  - Knowledge (BMPs, public...)

Completion: 2018



Metro



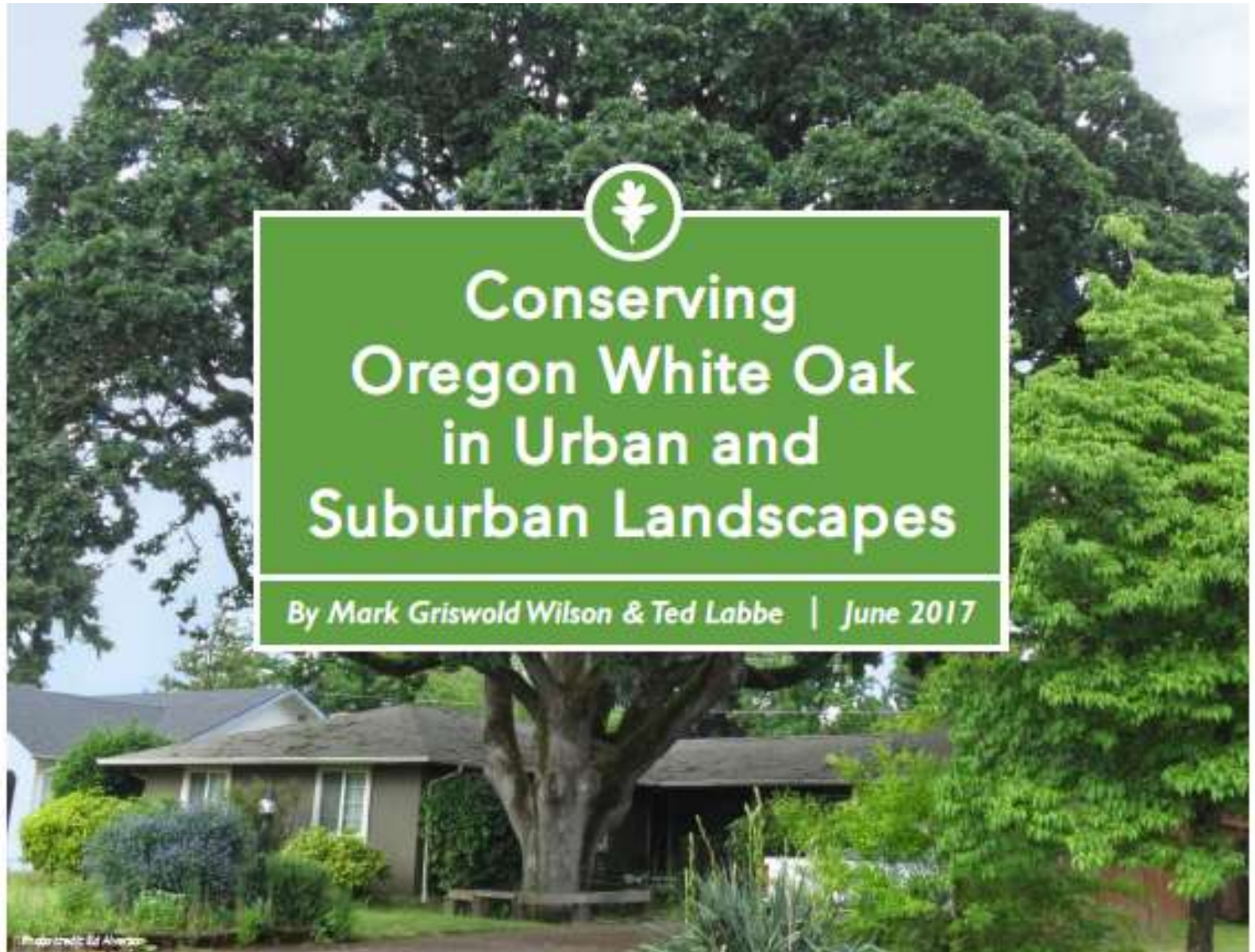
# Now what?

- Identify key habitat areas, biodiversity corridors
- Plan for acquisition, easements
- Private landowner workshops... etc.





# Workshops and landowners' guide



## Conserving Oregon White Oak in Urban and Suburban Landscapes

By Mark Griswold Wilson & Ted Labbe | June 2017





**Thank you.**