

PRELIMINARY COMMUNICATION | UDK: 637.071 | DOI: 10.15567/MLJEKARSTVO.2019.0107
RECEIVED: 03.01.2018. | ACCEPTED: 21.11.2018.

Potential of bovine kappa - casein as biomarker for detection of adulteration of goat's milk with cow's milk

Polona Jamnik^{1*}, Helena Volk¹, Nives Ogrinc², Barbara Jeršek¹

¹University of Ljubljana, Biotechnical Faculty, Department of Food Science and Technology, Jamnikarjeva 101, Ljubljana, Slovenia

²Jožef Stefan Institute, Department of Environmental Sciences, Jamova 39, Ljubljana/Slovenia

*Corresponding author: E-mail: polona.jamnik@bf.uni-lj.si

Abstract

Using two-dimensional (2-D) electrophoresis it was shown that bovine kappa-casein could be an appropriate biomarker of adulteration of goat's milk with cow's milk not only in raw milk, but also for milk thermally processed by pasteurization or treated with ultra-high-temperature. The presence of cow's milk in goat's milk was detected at level of 2 %. Furthermore, position of bovine kappa-casein spots on 2-D gels remained unchanged even with samples from two different geographical origins, Belgium and Slovenia. These results show that neither thermal processing nor different geographical area seem to affect the position of bovine kappa-casein spots on 2-D gels.

Key words: adulteration, goat's milk, kappa-casein, geographical origin, thermal processing

Introduction

Adulteration of milk is commonly recognized as dilution with water and it can be detected by determining the freezing point. Another kind of possible fraud is the adulteration of more expensive milk and milk products (e.g. goat's) with milk from other dairy animals (e.g. cow's) (Mininni et al., 2009; Dąbrowska et al., 2010; Rodrigues et al., 2012; Jürg et al., 2013). When the addition of cow's milk is not declared in milk or dairy products made from goat's milk such products are not suitable for people with allergic reactions to cow's milk (Spink and Moyer, 2011). The presence of cow's milk was found in 30 % of ewe and goat cheeses in markets of Croatia (Špoljarić et al., 2013) and

in 29 % of ewe and goat cheeses in markets of Slovenia (Klančnik et al., 2016)

During the last decade, proteomics technologies have been applied to different research areas within food technology including detection of food adulteration (Ortea et al., 2016). To detect adulteration of goat's milk with cow's milk the reference method is used, which is based on the differentiation of isoelectric points of cow and goat γ_2 - and γ_3 - caseins originating from the hydrolysis of the belonging β -caseins (Commission Regulation 2008; EC 273/08). But there are many studies, where mass spectrometry (MS) (Chen et al., 2004; Calvano et al., 2012; Girolamo et al., 2014) or gel

based approaches (Hinz et al., 2012; Špoljarić et al., 2013; Yang et al., 2014) have been used to detect adulteration of goat's milk with cow's milk or just for comparing protein profiles of different animal species milks. Although the general tendency nowadays is to move to gel-free workflows, protein electrophoresis has been used extensively (Ortea et al., 2012) and continues to be used (mainly 2-DE) in food authentication studies (Ortea et al., 2016). However, data provided by protein electrophoresis are often used as complementary to data obtained from MS-based approaches (Ortea et al., 2016). In our previous study (Jeršek et al., 2014) in order to detect the addition of raw cow's milk to raw goat's milk a 2-DE was used. It was found that bovine kappa-casein was an appropriate biomarker of adulteration. In the present study the potential to use a bovine kappa-casein as a biomarker for detecting the adulteration of goat's milk that has been thermally processed by pasteurization and ultra-high-temperature (UHT) treatment was examined. Additionally, samples of different geographical origins (Slovenia, Belgium) were compared to test if the results were geographically dependent.

Materials and methods

Milk samples

In this study raw, pasteurized, UHT cow and goat milk as well as their mixtures (2 % cow milk, 98 % goat milk) were used. Samples of raw goat milk and cow milk were obtained from Inex nv, Bavegem, Belgium. Half of the milk was pasteurized at the temperature of 62 °C for 30 min and cooled down on ice. UHT goat's milk and UHT cow's milk from the same milk batches was prepared at Inec nv. Furthermore, additional samples of goat's milk and cow's milk were obtained from two different farms in Slovenia. Aliquots of 40 mL of each milk sample were stored at -20 °C prior to use.

Chemicals and reagents

Immobilized pH gradient (IPG) buffer and 3-[(3-cholamidopropyl)dimethylammonio]-1-propanesulfonate (CHAPS) and a 2-D clean up kit were from GE Healthcare (Little Chalfont, UK). Sodium

dodecyl sulphate (SDS), glycerol, thiourea, urea, 2-amino-2-hydroxymethyl-propane-1,3-diol (Tris), dithiothreitol (DTT), iodoacetamide (IAA), bovine serum albumin and bromophenol blue were from Sigma (St. Louis, MO, USA), from (GE Healthcare). SYPRO Ruby was from Invitrogen (Carlsbad, CA, USA).

Two-dimensional electrophoresis

Concentration of proteins in the milk was determined by the method of Bradford (Bradford, 1976). Proteins were precipitated using a 2-D Clean up kit according to the manufacturer instructions.

Two-dimensional electrophoresis (2-DE) was performed according to Görg (1991), with minor modifications. Samples (100 µg of precipitated proteins) were solubilised in rehydration solution (7 M urea, 2 M thiourea, 2 % [w/v] CHAPS, 2 % [v/v] immobilised pH gradient [IPG] buffer [pH 3-10], 18 mM DTT and a trace of bromophenol blue) and applied to 13-cm NL pH 3 to 10 IPG strips. After rehydration, the first dimension (isoelectric focusing) was carried out on a Multiphore II system (GE Healthcare, Little Chalfont, UK). Before the second dimension, the IPG strips were equilibrated in equilibration buffer (75 mM Tris HCl, pH 8.8, 6 M urea, 30 % [v/v] glycerol, 2 % [w/v] SDS and a trace of bromophenol blue), containing 1 % DTT for 15 min, and for an additional 15 min in equilibration buffer containing 4.8 % IAA. SDS polyacrylamide gel electrophoresis was carried out using 12 % running gels on a vertical SE 600 discontinuous electrophoretic system (Hoefer Scientific Instruments, Holliston, MA, USA) at a constant 20 mA/gel for 15 min and then at a constant 40 mA/gel until the bromophenol blue reached the bottom of the gel. The 2-D gels were stained with SYPRO Ruby. For each sample, two 2-D gels were run under the same conditions. The 2-D gels were documented using a CAM-GX-CHEMI HR system (Syngene, Cambridge, UK). The gel images were aligned using the 2-D Dymension software, version 2.02 (Syngene Cambridge, UK).

Protein identification and amino acid sequences aligning

Spots of interest were excised from the gel and identified using matrix-assisted laser desorption/ionization time of flight (MALDI-TOF-TOF) mass spectrometry at the University of York. The resulting data were searched against the IPI_Bovine database (34274 sequences). The following search parameters were applied: *Bos taurus* as a species, tryptic digest with maximum one missed cleavage site. The peptide mass tolerance was set to ± 100 ppm, the fragment mass tolerance was set to ± 0.5 Da. Carbamidomethylation and oxidation of methionine were considered as possible modifications.

Aligning of amino acid sequences of kappa-casein from different species (cow, goat) were done using Clustal Omega program (Sievers et al., 2011).

Results and discussion

In our previous research (Jeršek et al., 2014) it was shown that the addition of cow's milk to goat's milk can be detected by a 2-DE coupled by MS, where cow and goat kappa-caseins can be differentiated depending on their post-translational modifications. Raw milk samples of the Slovenian origin were used and a mixture of 10 % of cow's milk and 90 % of goat's milk was tested for the detection of adulteration. In the present study the analysis of thermally processed milk samples from other geographical origin (Belgium) and with lower quantity of cow's milk (2 %) in the adulterated mixtures were included. In order to detect adulteration, 2-D gels were compared to find protein/s that is/are present only in cow's milk and not in goat's milk.

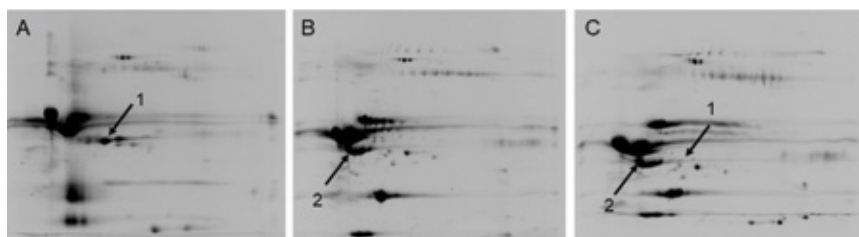


FIGURE 1. Protein profiles of raw cow's milk (A), goat's milk (B) and their mixture (cow, 2 % + goat, 98 %; cow - C). Proteins corresponding to cow's (1) and goat's (2) kappa-casein are marked with arrow

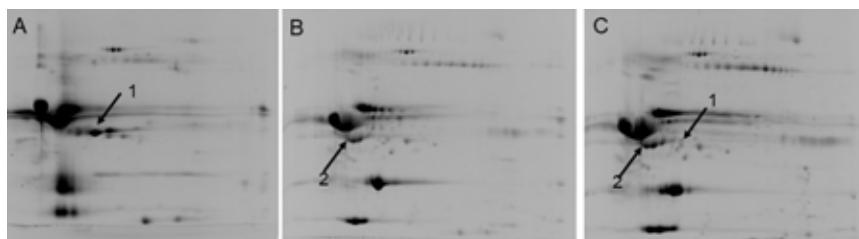


FIGURE 2. Protein profiles of pasteurized cow's milk (A), goat's milk (B) and their mixture (cow, 2 % + goat, 98 %; cow - C). Proteins corresponding to cow's (1) and goat's (2) kappa-casein are marked with arrow

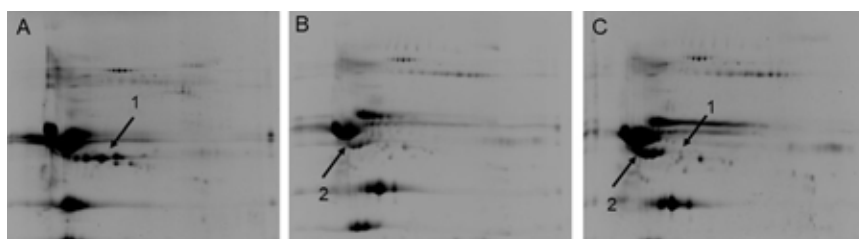


FIGURE 3. Protein profiles of UHT treated cow's milk (A), goat's milk (B) and their mixture (cow, 2 % + goat, 98 %; cow - C). Proteins corresponding to cow's (1) and goat's (2) kappa-casein are marked with arrow

By comparing protein profiles of pure cow's milk to the pure goat's milk samples, in all samples regardless of the applied thermal processing, two proteins specific for cow's milk that were not detected on the same position on a 2-D gel of

goat's milk were observed (Fig. 1, 2, 3). The same two spots with the same location on 2-D gels were observed in our previous study (Jeršek et al., 2014), where raw milk samples of Slovenian origin were analyzed (Fig. 4). Both two spots were identified as

vine has eight and four positions where O-linked glycosylation and phosphorylation occur, respectively. In the case of goat kappa-casein there are seven positions with O-linked glycosylation and three positions which are phosphorylated (The UniProt Consortium, 2017). Thus differences in the PTM degree result in different positions of bovine and goat kappa-casein on 2-D gels (Fig. 1-4). Hinz et al. (2012) compared protein profiles of milk from different animal species and highlighted significant interspecies differences. Concerning kappa-casein it exhibits different spots positions on 2-D gel in the case of goat's as well as camel's milk compared to cow's milk, but they were located on the same positions in case of buffalo's and cow's milk. For the latter two samples also general protein profile was similar. In the study of Yang et al. (2014) distributions of α -lactalbumin and/or β -lactoglobulin spots on 2-D gel were used to detect the adulteration of goat's, camel's, yak's and buffalo's milk with cow milk. On the other side, the reference method for determining the presence of cow's milk in goat's milk is based on the differentiation of isoelectric points of cow and goat γ_2 - and γ_3 -caseins originated from the hydrolysis of β -casein using isoelectric focusing (Commission Regulation 2008; EC 273/08).

The position of both bovine kappa-casein spots of on 2-D gel remained unchanged, when milk samples from other geographical region were analyzed. Here milk samples were from Belgium compared to previous study, where samples were from Slovenia (Jeršek et al., 2014). This indicates that the presence and location of both bovine kappa casein

spots on 2-D gel is not geographically dependent (Fig. 4).

Complementary to our previous study (Jeršek et al., 2014) where a mixture (10 % cow's milk + 90 % goat's milk) was investigated, here a less adulterated mixture (2 % cow's milk + 98 % goat's milk) was analyzed and two proteins that belong to bovine kappa-casein were still detected in all cases (Fig. 1, 2, 3). It has to be highlighted that Sypro ruby was used to stain the gels, which is more sensitive compared to Coomassie brilliant blue, as most common stain used (Berggren et al., 2000).

Conclusion

None of proteomic gel based studies/methods published so far focused on the location in 2-D gel of kappa-casein of different species (cow, goat) as a possible biomarker for the detection of cow milk as adulterant of goat milk. In the present study it was shown that neither thermal processing nor different geographical origin had an effect on the position of both bovine kappa casein protein spots on 2-D gel. Using the described approach, the presence of cow's milk in goat's milk can be detected at level of 2 %.

Acknowledgement

This study was supported by research project V4-1108 financed by Slovenian Research Agency and Ministry of Agriculture and the Environment of the Republic of Slovenia.

Potencijal kravljeg kapa-kazeina kao biomarkera za utvrđivanje patvorenja kozjega mlijeka kravljim

Sažetak

Korištenjem dvodimenzionalne elektroforeze dokazano je da kravljji kapa-kazein može biti odgovarajući biomarker za utvrđivanje patvorenja kozjega mlijeka kravljim mlijekom, ne samo u sirovom mlijeku, već i za mlijeko koje se termički obrađuje pasterizacijom ili ultra-visokom temperaturom. Prisutnost kravljeg mlijeka u kozjem mlijeku moguće je detektirati na razini od 2 %. Nadalje, položaj proteinskih mrlja kapa-kazeina na 2-D gelovima ostao je nepromijenjen uspoređujući uzorke mlijeka različitog geografskog podrijetla, Belgije i Slovenije. Ovi rezultati pokazuju da ni toplinska obrada niti različito geografsko podrijetlo ne utječu na položaj kravljih proteinskih mrlja kapa-kazeina na 2-D gelovima.

Ključne riječi: patvorenje, kozje mlijeko, kapa-kazein, zemljopisno podrijetlo, toplinska obrada

References

1. Berggren, K., Chernokalskaya, E., Steinberg, T.H., Kemper, C., Lopez, M.F., Diwu, Z., Haugland, R.P., Patton, W.F. (2000): Background-free, high sensitivity staining of proteins in one- and two-dimensional sodium dodecyl sulfate-polyacrylamide gels using a luminescent ruthenium complex. *Electrophoresis* 21, 2509-2521. [https://doi.org/10.1002/1522-2683\(20000701\)21:12<2509::AID-ELPS2509>3.0.CO;2-9](https://doi.org/10.1002/1522-2683(20000701)21:12<2509::AID-ELPS2509>3.0.CO;2-9)
2. Bradford, M.M. (1976): A rapid and sensitive method for the quantitation of microgram quantities of protein utilizing the principle of protein-dye binding. *Analytical Biochemistry* 72, 248-254. [https://doi.org/10.1016/0003-2697\(76\)90527-3](https://doi.org/10.1016/0003-2697(76)90527-3)
3. Calvano, C.D., De Ceglie, C., Monopoli, A., Zamboni C.G. (2012): Detection of sheep and goat milk adulterations by direct MALDI-TOF MS analysis of milk tryptic digests. *Journal of Mass Spectrometry* 47, 1141-1149. <https://doi.org/10.1002/jms.2995>
4. Chen, R.K., Chang, L.W., Chung, Y.Y., Lee, M.H., Ling, Y.C. (2004): Quantification of cow milk adulteration in goat milk using high-performance liquid chromatography with electrospray ionization mass spectrometry. *Rapid Communications in Mass Spectrometry* 18, 1167-1171. <https://doi.org/10.1002/rcm.1460>
5. Commission Regulation (2008): Reference method for the detection of cows' milk and caseinate in cheeses from ewes' milk, goats' milk or buffalos' milk or mixtures of ewes', goats' and buffalos' milk. Official Journal of the European Union EC No 273/2008 L88 53-61.
6. Dąbrowska, A., Wałęcka, E., Bania, J., Żelzako, M., Szołtysik, M., Chrzanowska, J. (2010): Quality of UHT goat's milk in Poland evaluated by real-time PCR. *Small Ruminant Research* 94, 32-37. <https://doi.org/10.1016/j.smallrumres.2010.06.005>
7. Finot, P.A., Deutsch, R., Bujard, E. (1981): The extent of the Maillard reaction during the processing of milk. In: Maillard reactions in food. Eriksson C. (Ed.): Pergamon, Oxford, UK, pp 345-355.
8. Girolamo, F.Di., Masotti, A., Salvatori, G., Scapatucci, M., Muraca, M., Putignani, L. (2014): A sensitive and effective proteomic approach to identify she-donkey's and goat's milk adulteration by MALDI-TOF MS fingerprinting. *International Journal of Molecular Sciences* 15, 13697-13719. <https://doi.org/10.3390/ijms150813697>
9. Görg, A. (1991): Two-dimensional electrophoresis. *Nature* 349, 545-546. <https://doi.org/10.1038/349545a0>
10. Gutiérrez-Adán, A., Maga, E.A., Meade, H., Shoemaker, C.F., Medrano, J.F., Anderson, G.B., Murray, J.D. (1996): Alterations of the physical characteristics of milk from transgenic mice producing bovine kappa-casein. *Journal of Dairy Science* 79, 791-799. [https://doi.org/10.3168/jds.S0022-0302\(96\)76427-5](https://doi.org/10.3168/jds.S0022-0302(96)76427-5)
11. Hinz, K., O'Connor, P., Huppertz, T., Ross, R., Kelly, A. (2012): Comparison of the principal proteins in bovine, caprine, buffalo, equine and camel milk. *Journal of Dairy Research* 79, 185-191. <https://doi.org/10.1017/S0022029912000015>
12. Jeršek, B., Jamnik, P., Klančnik, A., Kurinčič, M., Piskernik, S., Volk, H., Gornjak, A., Toplak, N., Kovač, M., Ogrinc, N. (2014): Detection of cow milk in sheep's and goat's milk and cheeses by real-time PCR, 2-D electrophoresis and fatty acid composition. Proceedings of the 2014 International Conference on Food Properties (ICFP2014), Kuala Lumpur, Malaysia, January 24-26, 1-5.
13. Jürg, R., Weibel, S., Jürg, R., Eugster, A., Beck, K., Köppel, R. (2013): Interlaboratory validation of two multiplex quantitative real-time PCR methods to determine species DNA of cow, sheep and goat as a measure of milk proportions in cheese. *European Food Research and Technology* 236, 217-227. <https://doi.org/10.1007/s00217-012-1880-y>
14. Klančnik, A., Toplak, N., Kovač, M., Ogrinc, N., Jeršek, B. (2016): Robust PCR-based method for quantification of bovine milk in cheeses made from caprine and ovine milk. *International Journal of Dairy Technology* 69, 540-549. <https://doi.org/10.1111/1471-0307.12287>
15. Milkovska-Stamenova S., Hoffmann, R. (2016): Identification and quantification of bovine protein lactosylation sites in different milk products. *Journal of Proteomics* 134, 112-126. <https://doi.org/10.1016/j.jprot.2015.07.021>
16. Mininni, A.N., Pellizzari, C., Cardazzo, B., Carraro, L., Balzan, S., Novelli, E. (2009): Evaluation of real-time PCR assays for detection and quantification of fraudulent addition of bovine milk to caprine and ovine milk for cheese manufacture. *International Dairy Journal* 19, 617-623. <https://doi.org/10.1016/j.idairyj.2009.04.003>
17. Ortea, I., O'Conno, G., Maquet, A. (2016): Review on proteomics for food authentication. *Journal of Proteomics* 147, 212-225. <https://doi.org/10.1016/j.jprot.2016.06.033>
18. Ortea, I., Pascoal, A., Cañas, B., Gallardo, J.M., Barros-Velázquez, J., Calo-Mata, P. (2012): Food authentication of commercially-relevant shrimp and prawn species: from classical methods to foodomics. *Electrophoresis* 33, 2201-2211. <https://doi.org/10.1002/elps.201100576>
19. Rodrigues, N.P.A., Givisiez, P.E.N., Queroga, R.C.E.E., Azevedo, P.S., Gebreyes, W.A., Oliviera, C.J.B. (2012): Milk adulteration: Detection of bovine milk in bulk goat milk produced by smallholders in northeastern Brazil by a duplex PCR assay. *Journal of Dairy Science* 95, 2749-2752. <https://doi.org/10.3168/jds.2011-5235>

20. Sievers, F., Wilm, A., Dineen, D., Gibson, T.J., Karplus, K., Li, W., Lopez, R., McWilliam, H., Remmert, M., Söding, J., Thompson, J.D., Higgins, D.G. (2011): Fast, scalable generation of high-quality protein multiple sequence alignments using Clustal Omega. *Molecular Systems Biology* 7, 1-6.
21. Spink, J., Moyer, D.C. (2011): Defining the public health threat of food fraud. *Journal of Food Science* 76, R157-R163.
<https://doi.org/10.1111/j.1750-3841.2011.02417.x>
22. Špoljarić, J., Mikulec, N., Plavljančić, D., Radeljević, B., Havranek, J., Antunac, N. (2013): Proving the adulteration of ewe and goat cheeses with cow milk using the reference method of isoelectric focusing of γ -casein. *Mljekarstvo* 63, 115-121.
23. The UniProt Consortium (2017): UniProt: the universal protein knowledgebase. *Nucleic Acids Research* 45, D158-D169.
<https://doi.org/10.1093/nar/gkw1099>
24. Yang, Y., Zheng, N., Yang, J., Bu, D., Wang, J., Ma, L., Sun, P. (2014): Animal species milk identification by comparison of two-dimensional gel map profile and mass spectrometry approach. *International Dairy Journal* 35, 15-20.
<https://doi.org/10.1016/j.idairyj.2013.09.008>