



PUBLISHED FOR SISSA BY SPRINGER

RECEIVED: November 12, 2018

ACCEPTED: January 27, 2019

PUBLISHED: February 4, 2019

Precision study of GeV-scale resonant leptogenesis

J. Ghiglieri^a and M. Laine^b

^aTheoretical Physics Department, CERN,
CH-1211 Geneva 23, Switzerland

^bAEC, Institute for Theoretical Physics, University of Bern,
Sidlerstrasse 5, CH-3012 Bern, Switzerland

E-mail: jacopo.ghiglieri@cern.ch, laine@itp.unibe.ch

ABSTRACT: Low-scale leptogenesis is most efficient in the limit of an extreme mass degeneracy of right-handed neutrino flavours. Two variants of this situation are of particular interest: large neutrino Yukawa couplings, which boost the prospects of experimental scrutiny, and small ones, which may lead to large lepton asymmetries surviving down to $T < 5$ GeV. We study benchmarks of these cases within a “complete” framework which tracks both helicity states of right-handed neutrinos as well as their kinetic non-equilibrium, and includes a number of effects not accounted for previously. For two right-handed flavours with GeV-scale masses, Yukawa couplings up to $|h| \sim 0.7 \times 10^{-5}$ are found to be viable for baryogenesis, with $\Delta M/M \sim 10^{-8}$ as the optimal degeneracy. Late-time lepton asymmetries are most favourably produced with $\Delta M/M \sim 10^{-11}$. We show that the system reaches a stationary state at $T < 15$ GeV, in which lepton asymmetries can be more than 10^3 times larger than the baryon asymmetry, reach flavour equilibrium, and balance against helicity asymmetries.

KEYWORDS: Thermal Field Theory, Neutrino Physics, CP violation, Resummation

ARXIV EPRINT: [1811.01971](https://arxiv.org/abs/1811.01971)

Contents

1	Introduction	2
2	Overview of the framework	3
3	Parametrization of the asymmetric ensemble	5
4	General structure of the indirect contribution	9
5	Determination of rate coefficients for the indirect contribution	11
5.1	Real part of the active neutrino self-energy	12
5.2	Widths at high temperatures: $2 \leftrightarrow 2$ scatterings with soft gauge exchange	13
5.3	Widths at intermediate temperatures: Born $1 \rightarrow 2$ decays	16
5.4	Widths at low temperatures: Fermi $2 \leftrightarrow 2$ scatterings and $1 \rightarrow 3$ decays	17
6	Determination of rate coefficients for the direct contribution	19
6.1	High temperatures: $2 \leftrightarrow 2$ scatterings with lepton or scalar exchange	20
6.2	High temperatures: ultrarelativistic $1 + n \leftrightarrow 2 + n$ scatterings and decays	22
6.3	Intermediate temperatures: Born $1 \rightarrow 2$ decays	23
6.4	Summary: putting everything together	24
7	Approximate solution and overall parametric dependences	25
8	Accurate solution for large neutrino Yukawa couplings	27
9	Accurate solution for small neutrino Yukawa couplings	28
10	Conclusions	29
A	Relations between chemical potentials and asymmetries	31
B	Thermally modified weak mixing angles	33
C	Coefficients for the Fermi limit of the active neutrino width	34
D	Phase space integrals for direct $2 \leftrightarrow 2$ scatterings	35

1 Introduction

An extension of the Standard Model through two or three generations of right-handed neutrinos, which account for the observed active neutrino mass differences and mixings, offers for a simple explanation of the baryon asymmetry in the present universe [1]. The Euclidean Lagrangian is

$$L_E \equiv L_{\text{old-SM}} + \bar{\nu}_R \not{\partial} \nu_R + \tilde{\phi}^\dagger \bar{\nu}_R h \ell_L + \bar{\ell}_L h^\dagger \nu_R \tilde{\phi} + \frac{1}{2} (\bar{\nu}_R^c M \nu_R + \bar{\nu}_R M^\dagger \nu_R^c), \quad (1.1)$$

where h is a Yukawa matrix, M a Majorana mass matrix, ℓ_L a left-handed lepton doublet, and $\tilde{\phi} = i\sigma_2 \phi^*$ a conjugated Higgs doublet. After a singular value decomposition and field rotation we may assume $M = \text{diag}(M_1, M_2, M_3)$, where $M_I \geq 0$. In the following we focus on the minimal case that effectively only two generations (with masses M_1, M_2) play a role; this is sufficient for explaining all known active neutrino properties.

In its classic implementation [1], leptogenesis assumes that $M_I \gg 200 \text{ GeV}$, so that right-handed neutrinos become non-relativistic and fall out of equilibrium at a time when baryon number violating interactions through sphaleron processes are still in thermal equilibrium [2]. If the Majorana masses are furthermore assumed to be “hierarchical”, only the lightest among them plays a substantial role in leptogenesis. This prototypical example has been studied to great detail by now, including the effect of radiative corrections (cf., e.g., refs. [3–6]). The drawback of this scenario is that it is not falsifiable: leptogenesis depends on high-energy parameters which cannot be uniquely fixed in low-energy experiments (cf., e.g., ref. [7]).

Falsifiability can be boosted by making the right-handed neutrinos light. If we push their mass scale all the way down to the vicinity of a cosmologically admissible lower bound $M_I \sim 0.1 \text{ GeV}$ [8], right-handed neutrinos could become accessible e.g. to B-factory type experiments. The price to pay is that a certain degree of mass degeneracy is then needed. We refer to this framework [9–13] as “low-scale resonant leptogenesis”. The near-degeneracy can be argued to be “natural” in the sense that it may originate from a slightly broken symmetry (cf., e.g., ref. [14]). The neutrino Yukawa couplings can be tuned relatively large, perhaps making the framework particularly well suited for experimental detection. The purpose of the current paper is to scrutinize the parameter space of this scenario, following many recent investigations [15–28].

Right-handed neutrino oscillations become efficient when the oscillation rate of a co-moving momentum mode k equals the Hubble rate, i.e. around the temperature

$$T_{\text{osc}} \sim 700 \text{ GeV} \left(\frac{M}{\text{GeV}} \frac{|\Delta M|}{\text{eV}} \frac{T_{\text{osc}}}{k} \right)^{1/3}, \quad (1.2)$$

where $M \equiv (M_1 + M_2)/2$ and $\Delta M \equiv M_2 - M_1$. Baryon asymmetry generation through sphaleron processes stops at $T_{\text{sph}} \sim 130 \text{ GeV}$ [29]. If we make ΔM very small, the dynamics relevant for baryogenesis takes place at temperatures just above T_{sph} [24]. Electroweak

crossover is at $T \sim 160$ GeV [30, 31], and therefore we may find ourselves on the side of the Higgs phase¹ in this situation.

Our study is based on a quantum field theoretic formalism that we have developed in a series of previous papers [15, 20, 26], drawing upon earlier investigations [32–36]. The system is characterized by a number of slow equilibration rates, which are mediated by neutrino Yukawa couplings and are of magnitude $\sim |h|^2 g^2 T/\pi$, where $g^2 \equiv 4\pi\alpha$ is a generic Standard Model coupling, as well as by a slow flavour oscillation rate, which is of magnitude $\sim |M_2^2 - M_1^2|/k$. The slow rates imply that right-handed neutrinos are neither in chemical, nor in kinetic, nor in helicity, nor in flavour equilibrium, and need to be tracked through density matrices. The equilibration rates contain both “direct” and “indirect” contributions, with the former referring to $1 \leftrightarrow 2$ and $2 \leftrightarrow 2$ decays or scatterings and the latter to rates experienced by off-shell left-handed neutrinos, which subsequently “oscillate” into right-handed neutrinos thanks to the presence of the Higgs mechanism at $T \lesssim 160$ GeV.

The plan of this paper is as follows. After reviewing the overall theoretical framework in section 2 and the parametrization of a charge-asymmetric ensemble in the presence of a Higgs mechanism in section 3, we discuss the structure of the indirect contribution in section 4, keeping consistently track of both helicity states. All ingredients appearing in the rate coefficients are computed in section 5, generalizing previous results in order to account for both helicity states and the presence of chemical potentials. The direct contributions are discussed in section 6, again resolving existing results to the chemical potential assignments relevant for the Higgs phase. The resulting system is solved numerically in an approximate form in section 7, in order to identify relevant corners of the parameter space. A more precise solution is presented in section 8, for a benchmark with large Yukawa couplings, and in section 9, for a benchmark with small ones. We conclude in section 10, and relegate some technical details to four appendices.

2 Overview of the framework

We start by summarizing the form of the master equations that were derived in ref. [20] from operator equations of motion and from arguments based on a separation of time scales. The variables considered are the yield parameters for lepton minus baryon asymmetries, $Y_a - Y_B/3$, and the helicity-symmetrized and antisymmetrized density matrices for right-handed neutrinos, $\rho^\pm(k)$. The cosmological evolution is conveniently tracked through a variable $x \equiv \ln(T_{\max}/T)$, where T_{\max} is the temperature at which we start the evolution, and momentum through the co-moving variable $k_T \equiv k [s(T)/s(T_{\min})]^{1/3}$, where s is the entropy density and T_{\min} the temperature at which we stop the evolution. The yield parameters evolve as

$$Y'_a - \frac{Y'_B}{3} = \frac{4}{s} \int_{\mathbf{k}_T} \text{Tr} \left\{ -n_{\text{F}}(k_T)[1 - n_{\text{F}}(k_T)] \hat{A}_{(a)}^+ + [\rho^+ - \mathbb{1} n_{\text{F}}(k_T)] \hat{B}_{(a)}^+ + \rho^- \hat{B}_{(a)}^- \right\}, \quad (2.1)$$

¹We refer to the Higgs phase alternatively as a “broken” phase, even if strictly speaking the Standard Model gauge symmetries do not get broken.

where the first structure on the right-hand side may be called a washout term and the latter structures source terms. The trace goes over the flavour indices and n_{F} denotes the Fermi distribution. To $\mathcal{O}(h_{Ia}^2, \mu^2)$ the coefficients read

$$\widehat{A}_{(a)IJ}^+ = \text{Re}(h_{Ia}h_{Ja}^*) \bar{\mu}_a \widehat{Q}_{(a)\{IJ\}}^+, \quad (2.2)$$

$$\widehat{B}_{(a)IJ}^+ = -i \text{Im}(h_{Ia}h_{Ja}^*) \widehat{Q}_{(a)\{IJ\}}^+ + \text{Re}(h_{Ia}h_{Ja}^*) \left[\bar{\mu}_a \widehat{R}_{(a)\{IJ\}}^+ + \sum_i \bar{\mu}_i \widehat{S}_{(a)\{IJ\}}^{+(i)} \right], \quad (2.3)$$

$$\widehat{B}_{(a)IJ}^- = \text{Re}(h_{Ia}h_{Ja}^*) \widehat{Q}_{(a)\{IJ\}}^- - i \text{Im}(h_{Ia}h_{Ja}^*) \left[\bar{\mu}_a \widehat{R}_{(a)\{IJ\}}^- + \sum_i \bar{\mu}_i \widehat{S}_{(a)\{IJ\}}^{-(i)} \right], \quad (2.4)$$

where h_{Ia} are Yukawas coupling a sterile neutrino of flavour I to a lepton of generation a ; $\bar{\mu}_i \equiv \mu_i/T$ are rescaled chemical potentials; and rate coefficients Q, R, S (to be defined in section 4, cf. eqs. (4.4) and (4.5)) are normalized as $\widehat{Q} \equiv Q/(3c_s^2 H)$, where H is the Hubble rate and c_s^2 the speed of sound squared. The superscripts \pm indicate a symmetrization/antisymmetrization over helicity, and $\{IJ\}$ indicates a symmetrization over flavour indices. Right-handed neutrino density matrices evolve as

$$\begin{aligned} (\rho^\pm)'(k_T) &= i[\widehat{H}_0, \rho^\pm]_\star + i[\widehat{\Delta}_0, \rho^\mp]_\star + 2n_{\text{F}}(k_T)[1 - n_{\text{F}}(k_T)] \widehat{C}^\pm \\ &\quad - \{\widehat{D}^\pm, \rho^\pm - \mathbb{1}n_{\text{F}}(k_T)\}_\star - \{\widehat{D}^\mp, \rho^\mp\}_\star, \end{aligned} \quad (2.5)$$

where $[A, B]_\star \equiv AB - B^\dagger A^\dagger$, $\{A, B\}_\star \equiv AB + B^\dagger A^\dagger$ (with $\rho^{\pm\dagger} = \rho^\pm$). The coefficients read

$$\begin{aligned} \widehat{H}_{0IJ} &= \frac{\delta_{IJ} M_I^2}{6k_T c_s^2 H} \\ &\quad + \frac{\sum_a \text{Re}(h_{Ia}h_{Ja}^*) [T^2 \beta_{(a)}^+ + v^2 \kappa_{(a)IJ}^+] - i \sum_a \text{Im}(h_{Ia}h_{Ja}^*) [T^2 \beta_{(a)}^- + v^2 \kappa_{(a)IJ}^-]}{6k_T c_s^2 H}, \end{aligned} \quad (2.6)$$

$$\widehat{\Delta}_{0IJ} = \frac{-i \sum_a \text{Im}(h_{Ia}h_{Ja}^*) [T^2 \beta_{(a)}^+ + v^2 \delta_{(a)IJ}^+] + \sum_a \text{Re}(h_{Ia}h_{Ja}^*) [T^2 \beta_{(a)}^- + v^2 \delta_{(a)IJ}^-]}{6k_T c_s^2 H}, \quad (2.7)$$

$$\widehat{C}_{IJ}^+ = -i \sum_a \text{Im}(h_{Ia}h_{Ja}^*) \bar{\mu}_a \widehat{Q}_{(a)\{IJ\}}^+, \quad \widehat{C}_{IJ}^- = \sum_a \text{Re}(h_{Ia}h_{Ja}^*) \bar{\mu}_a \widehat{Q}_{(a)\{IJ\}}^-, \quad (2.8)$$

$$\widehat{D}_{IJ}^+ = \sum_a \text{Re}(h_{Ia}h_{Ja}^*) \widehat{Q}_{(a)IJ}^+ - i \sum_a \text{Im}(h_{Ia}h_{Ja}^*) \left[\bar{\mu}_a \widehat{R}_{(a)IJ}^+ + \sum_i \bar{\mu}_i \widehat{S}_{(a)IJ}^{+(i)} \right], \quad (2.9)$$

$$\widehat{D}_{IJ}^- = -i \sum_a \text{Im}(h_{Ia}h_{Ja}^*) \widehat{Q}_{(a)IJ}^- + \sum_a \text{Re}(h_{Ia}h_{Ja}^*) \left[\bar{\mu}_a \widehat{R}_{(a)IJ}^- + \sum_i \bar{\mu}_i \widehat{S}_{(a)IJ}^{-(i)} \right], \quad (2.10)$$

where $v \simeq 246$ GeV is the Higgs expectation value, $\kappa_{(a)IJ}^\pm$ and $\delta_{(a)IJ}^\pm$ are given in eq. (4.8), and $\beta_{(a)}^\pm$ is in eq. (6.14). There is also an evolution equation for baryon plus lepton asymmetry, specified above eq. (A.12) and parametrized by the Chern-Simons diffusion rate Γ_{diff} [29].²

To close the set of equations, the yields appearing on the left-hand side of eq. (2.1) and the chemical potentials appearing on the right-hand sides of eqs. (2.1) and (2.5) need to be

²Compared with refs. [20, 26], we have displayed a subscript (a) in Q, R, S because these coefficients can depend non-linearly on lepton chemical potentials μ_a in the broken phase; we have inserted a superscript (i) in S because a larger set of chemical potentials plays a role; and, most importantly, we have included all the mass corrections relevant for the broken phase, parametrized by the coefficients β^\pm, κ^\pm and δ^\pm .

related to each other. This “static” relation can be established as $n_i = \partial p / \partial \mu_i$, where the μ_i -dependence of the pressure p is specified in section 3 and in more detail in appendix A.

As seen from eqs. (2.2)–(2.4) and (2.8)–(2.10), the microscopic information needed for solving the rate equations is contained in the mass corrections β, κ, δ and in the rate coefficients Q, R, S , which at high temperatures are functions of the temperature T , the momentum k , and the right-handed neutrino masses M_I . At low temperatures $T \lesssim 160$ GeV, when we find ourselves in the Higgs phase, the coefficients become more complicated, depending also on v and on various particle masses. In the class of gauges in which the Goldstone modes and the gauge fields do not couple to each other, the coefficients can be expressed as [15]

$$Q = Q^{\text{direct}} + Q^{\text{indirect}}. \quad (2.11)$$

Here the direct contributions refer to $1+n \leftrightarrow 2+n$ and to $2 \leftrightarrow 2$ processes also present in the symmetric phase, whereas the indirect contributions are proportional to v^2 , and originate from the “oscillation” of left-handed (active) neutrinos into right-handed (sterile) ones. The direct contributions were derived in ref. [20], but require a modification with respect to their chemical potential dependence in the Higgs phase (cf. section 6). The indirect contributions require a lengthier analysis, as we need to generalize the results of ref. [15] to include dependences both on helicity and on various chemical potentials. After specifying the chemical potentials (section 3), we thus first turn to the indirect contributions (cf. sections 4 and 5).

3 Parametrization of the asymmetric ensemble

As shown in eqs. (2.2)–(2.4) and (2.8)–(2.10), we aim to compute the coefficients entering the rate equations to leading non-trivial order in chemical potentials. Having non-zero chemical potentials at $T \lesssim 160$ GeV implies that the Higgs field and both neutral components of the gauge potentials develop expectation values. The Feynman rules pertinent to this situation are non-standard and somewhat subtle; moreover sign conventions can be a source of trouble. We summarize in this section the conventions and Feynman rules that are needed later on.

With the density matrix

$$\rho_{\text{SM}} = \frac{1}{Z_{\text{SM}}} \exp\left(-\frac{H_{\text{SM}} - \sum_a \mu_a L_a - \mu_B B}{T}\right), \quad (3.1)$$

where $L_a \equiv \int_{\mathbf{x}} [\bar{\ell}_{L_a} \gamma_0 \ell_{L_a} + \bar{e}_{R_a} \gamma_0 e_{R_a}]$ is the lepton number for generation a , the part of the Euclidean action containing the kinetic terms for ℓ_{L_a} is

$$S_E \supset \int_0^{1/T} d\tau \int_{\mathbf{x}} \bar{\ell}_{L_a} (\gamma_\mu D_\mu - \gamma_0 \mu_a) \ell_{L_a}. \quad (3.2)$$

The covariant derivative acting on ℓ_{L_a} reads

$$D_\mu \equiv \partial_\mu - \frac{ig_1 B_\mu}{2} - \frac{ig_2 \sigma_a A_\mu^a}{2}, \quad (3.3)$$

particle species	left-handed state	right-handed state
up-type quarks	$\mu_{u_L} \equiv \mu_q + \frac{\mu_Y}{6} - \frac{\mu_A}{2}$	$\mu_{u_R} \equiv \mu_q + \frac{2\mu_Y}{3}$
down-type quarks	$\mu_{d_L} \equiv \mu_q + \frac{\mu_Y}{6} + \frac{\mu_A}{2}$	$\mu_{d_R} \equiv \mu_q - \frac{\mu_Y}{3}$
neutrinos	$\mu_{\nu_{La}} \equiv \mu_a - \frac{\mu_Y}{2} - \frac{\mu_A}{2}$	
charged leptons	$\mu_{e_{La}} \equiv \mu_a - \frac{\mu_Y}{2} + \frac{\mu_A}{2}$	$\mu_{e_{Ra}} \equiv \mu_a - \mu_Y$
neutral scalars / Z^0	$\mu_{\phi_0} \equiv \frac{\mu_Y}{2} + \frac{\mu_A}{2}$	$\mu_{Z^0} \equiv 0$
charged scalars / W^+	$\mu_{\phi_+} \equiv \frac{\mu_Y}{2} - \frac{\mu_A}{2}$	$\mu_{W^+} \equiv -\mu_A$

Table 1. Effective chemical potentials carried by Standard Model particles in the chiral limit, obtained from eq. (3.1) (we denote $\mu_q \equiv \mu_B/3$) and from covariant derivatives after the use of eq. (3.4). In the symmetric phase $v \ll T$, we impose eq. (3.5), so only μ_Y plays a role. Deep in the broken phase $v \gg T$, when fermion masses and the chiral anomaly lead to rapid transitions between the two chiral states, we impose eq. (3.6), guaranteeing that both chiral states have the same chemical potential. The same applies to Goldstone modes and the corresponding gauge fields. The intermediate regime $v \sim T$ is more delicate and the assignments above are only suggestive (cf. the text). No chemical potential is indicated for right-handed neutrinos, which are not necessarily in chemical equilibrium.

where B_μ is the hypercharge field and σ_a are the Pauli matrices. Gauge field backgrounds (we employ Euclidean conventions for B_μ, A_μ^a) are denoted by

$$\mu_Y \equiv -ig_1 B_0, \quad \mu_A \equiv -ig_2 A_0^3. \quad (3.4)$$

The resulting chemical potentials for ν_{La}, e_{La} and for other particles are collected in table 1.

Now, in the “symmetric phase”, where the Higgs mechanism is not operative, the $SU_L(2)$ gauge symmetry is intact, so within a perturbative treatment we should have

$$\mu_A = 0 \quad (v \ll T). \quad (3.5)$$

In contrast, in the “broken phase”, fermion masses induced by Yukawa couplings, as well as the chiral anomaly, violate chirality. If we assume that these reactions are in chemical equilibrium and that a quasiparticle description is viable, we should assign the same chemical potential to both chiral states.³ According to table 1, this implies that

$$\mu_A + \mu_Y = 0 \quad (v \gg T, \text{ tree-level}). \quad (3.6)$$

³Put another way, only by assigning the same chemical potential to both chiral states do we obtain simple propagators for massive particles (top, bottom, Higgs, W^\pm, Z^0). If we violate this condition, which happens in the regime $v \sim T$, chemical potentials should probably be treated as “insertions” within perturbation theory, rather than being resummed into propagators. We have not undertaken this rather cumbersome treatment. At the same time the violation of eq. (3.6) induces a certain free energy cost in the landscape parametrized by v, μ_Y and μ_A , and this has been fully accounted for, as explained around eq. (3.17) and in appendix A.

In contrast a large chemical potential can be assigned to the electromagnetic field ($\equiv \mu_Q$), which means that we may write

$$\mu_A \equiv -\mu_Q + (1 - s^2)\mu_Z, \quad \mu_Y \equiv \mu_Q + s^2\mu_Z, \quad |\mu_Z| \sim \frac{T^2}{v^2} |\mu_Q| \ll |\mu_Q|. \quad (3.7)$$

Here $s \equiv \sin(\tilde{\theta})$ denotes a temperature-dependent weak mixing angle (cf. eq. (B.4)).

In the following, we keep both μ_A and μ_Y non-zero, with the motivation of having expressions that can be extrapolated both to $v \ll T$ and $v \gg T$. Furthermore this helps to illustrate the challenges that arise in the regime $v \sim T$, $|\mu_Z| \sim |\mu_Q|$. We are interested in determining rate coefficients and mass corrections up to linear order in chemical potentials. With the choice of eq. (3.6), terms linear in μ_Z arise from 1-loop ‘‘tadpoles’’ mediated by Z^0 exchange; the corresponding value of μ_Z is given in eq. (A.7).

Next, consider fluctuations around the minimum of the thermal Higgs effective potential. The covariant derivative acting on the Higgs field is given by

$$D_\mu \phi \equiv \left(\partial_\mu + \frac{ig_1 B_\mu}{2} - \frac{ig_2 \sigma_a A_\mu^a}{2} \right) \phi. \quad (3.8)$$

We write the (fluctuating parts of the) Higgs doublet and gauge potentials as

$$\phi \equiv \begin{pmatrix} \phi_+ \\ \phi_0 \end{pmatrix} \equiv \frac{1}{\sqrt{2}} \begin{pmatrix} \phi_2 + i\phi_1 \\ h - i\phi_3 \end{pmatrix}, \quad W_\mu^+ \equiv \frac{A_\mu^1 - iA_\mu^2}{\sqrt{2}}, \quad Z_\mu \equiv \frac{g_1 B_\mu + g_2 A_\mu^3}{\sqrt{g_1^2 + g_2^2}}. \quad (3.9)$$

We also denote $W_\mu^- \equiv W_\mu^{+*}$ and $Z'_\mu \equiv (g_1 B_\mu - g_2 A_\mu^3)/\sqrt{g_1^2 + g_2^2}$. Feynman gauge fixing is adopted because it simplifies the power counting relevant for the ultrarelativistic regime [15]. The gauge constraints are chosen to contain components of the background fields,

$$S_E \supset \int_X \frac{1}{2} \left(\sum_{a=1}^3 G_a^2 + G^2 \right), \quad (3.10)$$

where

$$G \equiv \partial_\mu B_\mu - \frac{g_1 v \phi_3}{2}, \quad G_3 \equiv \partial_\mu A_\mu^3 - \frac{g_2 v \phi_3}{2}, \quad (3.11)$$

$$G_1 \equiv \partial_\mu A_\mu^1 - i\mu_A A_0^2 - \frac{g_2 v \phi_1}{2}, \quad G_2 \equiv \partial_\mu A_\mu^2 + i\mu_A A_0^1 - \frac{g_2 v \phi_2}{2}. \quad (3.12)$$

With this gauge fixing, the quadratic part of the charged sector is

$$S_E \supset \int_P \left\{ W_\mu^-(P) W_\mu^+(P) \left[(p_n - i\mu_A)^2 + p^2 + m_W^2 \right] \right. \\ \left. + \phi_+^*(P) \phi_+(P) \left[\left(p_n + \frac{i\mu_Y - i\mu_A}{2} \right)^2 + p^2 + m_W^2 \right] \right. \\ \left. - (i\mu_A + i\mu_Y) m_W \left[\phi_+^*(P) W_0^+(P) + \phi_+(P) W_0^-(P) \right] \right\}, \quad (3.13)$$

where p_n denotes a bosonic Matsubara frequency and $P \equiv (p_n, \mathbf{p})$. It is observed that with eq. (3.6) (or, more generally, to linear order in $\mu_A + \mu_Y$), the gauge propagator obtains a

simple form (here $\oint_P \delta(P) \equiv 1$):

$$\langle W_\mu(P) W_\nu^*(Q) \rangle = \frac{\delta_{\mu\nu} \delta(P-Q)}{(p_n - i\mu_A)^2 + p^2 + m_W^2} + \mathcal{O}(\mu_A + \mu_Y)^2 \times \mathcal{O}(m_W^2). \quad (3.14)$$

Similarly, ϕ_+ can be assigned the chemical potential $\mu_{\phi_+} = (\mu_Y - \mu_A)/2$ as given in table 1.

An analogous consideration can be carried out in the neutral sector. The mass splitting between the Higgs field h and the neutral Goldstone ϕ_3 complicates matters, so that the quadratic part now reads

$$\begin{aligned} S_E \supset \oint_P \left\{ \frac{1}{2} Z_\mu(-P) Z_\mu(P) \left[p_n^2 + p^2 + m_Z^2 \right] \right. \\ \left. + \phi_0^*(P) \phi_0(P) \left[\left(p_n + \frac{i\mu_A + i\mu_Y}{2} \right)^2 + p^2 + \frac{m_H^2 + m_Z^2}{2} \right] \right. \\ \left. + \frac{m_H^2 - m_Z^2}{4} \left[\phi_0(-P) \phi_0(P) + \phi_0^*(-P) \phi_0^*(P) \right] \right. \\ \left. + (i\mu_A + i\mu_Y) \frac{m_Z}{\sqrt{2}} \left[\phi_0(-P) + \phi_0^*(P) \right] Z_0(P) \right\}. \quad (3.15) \end{aligned}$$

The coupling of the temporal gauge field component to the scalars disappears for $\mu_A + \mu_Y = 0$, and the Z propagator reads

$$\langle Z_\mu(P) Z_\nu(Q) \rangle = \frac{\delta_{\mu\nu} \delta(P+Q)}{p_n^2 + p^2 + m_Z^2} + \mathcal{O}(\mu_A + \mu_Y)^2 \times \mathcal{O}(m_Z^2). \quad (3.16)$$

For the neutral scalar field ϕ_0 , a simple propagator parametrized by $\mu_{\phi_0} = (\mu_A + \mu_Y)/2$ can only be obtained if $m_H = m_Z$.

In order to fix the values of μ_A and μ_Y , we need to extremize the corresponding effective potential [37]. The effective potential equals minus the pressure. Since the chemical potentials are small compared with the temperature, only the leading non-trivial order is needed, and we can indeed treat chemical potentials as insertions. Restricting to leading order in Standard Model couplings, the result can be represented as a smooth interpolating function which has correct leading-order limits at $\pi T \ll m_W$ and $\pi T \gg m_W$ [15]:

$$\begin{aligned} p(T, \mu) - p(T, 0) \approx \sum_a \chi_F(m_{\nu_a}) \left[\frac{\mu_a^2}{2} - \frac{\mu_A \mu_a}{2} - \frac{\mu_Y \mu_a}{2} + \frac{\mu_A^2}{8} + \frac{\mu_A \mu_Y}{4} + \frac{\mu_Y^2}{8} \right] \\ + \sum_a \chi_F(m_{e_a}) \left[\mu_a^2 + \frac{\mu_A \mu_a}{2} - \frac{3\mu_Y \mu_a}{2} + \frac{\mu_A^2}{8} - \frac{\mu_A \mu_Y}{4} + \frac{5\mu_Y^2}{8} \right] \\ + \sum_{i=u,c,t} \chi_F(m_i) \left[3\mu_q^2 - \frac{3\mu_A \mu_q}{2} + \frac{5\mu_Y \mu_q}{2} + \frac{3\mu_A^2}{8} - \frac{\mu_A \mu_Y}{4} + \frac{17\mu_Y^2}{24} \right] \\ + \sum_{i=d,s,b} \chi_F(m_i) \left[3\mu_q^2 + \frac{3\mu_A \mu_q}{2} - \frac{\mu_Y \mu_q}{2} + \frac{3\mu_A^2}{8} + \frac{\mu_A \mu_Y}{4} + \frac{5\mu_Y^2}{24} \right] \\ + \left[\chi_B(m_H) + \chi_B(m_Z) \right] \frac{(\mu_A + \mu_Y)^2}{16} + \chi_B(m_W) \left[\mu_A^2 + \frac{(\mu_A - \mu_Y)^2}{8} \right] \\ + \frac{v^2 (\mu_A + \mu_Y)^2}{8}. \quad (3.17) \end{aligned}$$

Here the susceptibilities are defined as

$$\chi_{\text{F}}(m) \equiv \int_{\mathbf{p}} [-2n'_{\text{F}}(E)] \xrightarrow{m \rightarrow 0} \frac{T^2}{6}, \quad \chi_{\text{B}}(m) \equiv \int_{\mathbf{p}} [-2n'_{\text{B}}(E)] \xrightarrow{m \rightarrow 0} \frac{T^2}{3}, \quad (3.18)$$

where n_{F} and n_{B} are the Fermi and Bose distributions. The neutrino masses m_{ν_a} serve as a symbolic indicator of the origin of the contribution. The relations between chemical potentials and lepton and baryon asymmetries following from eq. (3.17) are given in appendix A. Corrections, which are of $\mathcal{O}(g)$, have so far only been determined for the symmetric phase [38, 39].

4 General structure of the indirect contribution

As can be inferred from eqs. (2.2)–(2.4) and (2.8)–(2.10), the rate coefficients Q are related to C-even and R, S to C-odd processes. In the symmetric phase, R, S could be determined from a Taylor expansion in chemical potentials. In contrast, the dependence on chemical potentials is non-linear in the broken phase, so we need to generalize the definitions.

At $\mathcal{O}(h_{\tau a}^2)$, all rate coefficients can be related to the Euclidean 2-point correlator of the operators to which the right-handed neutrinos couple:

$$\Pi_{\text{E}}(\tilde{K}) \equiv \int_X e^{i\tilde{K} \cdot X} \langle (\tilde{\phi}^\dagger \ell_{L_a})(X) (\bar{\ell}_{L_a} \tilde{\phi})(0) \rangle, \quad \tilde{K} = (k_n - i\mu_a, \mathbf{k}), \quad (4.1)$$

where k_n is a fermionic Matsubara frequency, $X = (\tau, \mathbf{x})$, and $\tilde{K} \cdot X = (k_n - i\mu_a)\tau + \mathbf{k} \cdot \mathbf{x}$. In the language of the canonical formalism, the expectation value is taken with respect to the density matrix in eq. (3.1). In perturbation theory, $\mu_a, \mu_B \neq 0$ induce expectation values for gauge field zero modes, which effectively act as additional chemical potentials (cf. section 3).

The central object is the spectral function corresponding to eq. (4.1). It is the imaginary part of the retarded correlator $\Pi_{\text{R}}(\mathcal{K})$,⁴ which in turn is an analytic continuation of $\Pi_{\text{E}}(\tilde{K})$:

$$\rho_a(\mathcal{K}) \equiv \text{Im} \Pi_{\text{R}}(\mathcal{K}) \equiv \text{Im} \Pi_{\text{E}}(\tilde{K}) \Big|_{\tilde{k}_n \rightarrow -i[k_0 + i0^+]}. \quad (4.2)$$

The rate coefficients are obtained by taking matrix elements of $\rho_a(\mathcal{K})$,

$$\Omega_{(a\tau)IJ} \equiv \frac{\bar{u}_{\mathbf{k}\tau J} a_{\text{L}} \rho_a(\mathcal{K}_J) a_{\text{R}} u_{\mathbf{k}\tau I}}{\sqrt{\omega_I^k \omega_J^k}}, \quad (4.3)$$

where $\mathcal{K}_J \equiv (\omega_J^k, \mathbf{k})$, $\omega_J^k \equiv \sqrt{k^2 + M_J^2}$, $a_{\text{L}}, a_{\text{R}}$ are chiral projectors, and $u_{\mathbf{k}\tau I}$ is an on-shell spinor for sterile flavour I in the helicity state $\tau = \pm$. As we work at $\mathcal{O}(h_{\tau a}^2)$ in neutrino Yukawa couplings and the mixing of active and sterile neutrinos was already accounted for within the reduction of the non-equilibrium problem into the correlators in eq. (4.3), the mixing can be omitted in the definition of the on-shell spinors $u_{\mathbf{k}\tau I}$.

In the equations of ref. [20], another version of eq. (4.3) also appears, in which the chiral projectors and helicity states are interchanged ($a_{\text{L}} \leftrightarrow a_{\text{R}}, \tau \rightarrow -\tau$) and the four-momentum

⁴The real part of $\Pi_{\text{R}}(\mathcal{K})$ is also important, cf. the discussion around eqs. (4.8) and (6.14).

is simultaneously put to $-\mathcal{K}_J$. In the chiral limit, flipping the helicity is compensated for by exchanging the chiral projectors, however changing the sign of \mathcal{K}_J does have an effect. Specifically, without chemical potentials the real (imaginary) part of the neutrino self-energy is odd (even) in $\mathcal{K}_J \rightarrow -\mathcal{K}_J$, whereas a single insertion of a chemical potential reverses these properties. This implies that the substitution $\mathcal{K}_J \rightarrow -\mathcal{K}_J$ corresponds to $\mu \rightarrow -\mu$, and we can write

$$Q_{(a\tau)IJ} \equiv \frac{1}{2} \left[\Omega_{(a\tau)IJ} \Big|_{\mu} + \Omega_{(a\tau)IJ} \Big|_{-\mu} \right], \quad (4.4)$$

$$\bar{\mu}_a R_{(a\tau)IJ} + \sum_i \bar{\mu}_i S_{(a\tau)IJ}^{(i)} \equiv \frac{1}{2} \left[\Omega_{(a\tau)IJ} \Big|_{\mu} - \Omega_{(a\tau)IJ} \Big|_{-\mu} \right]. \quad (4.5)$$

The dependence of Q, R, S on the flavour index a vanishes in the symmetric phase, where a Taylor expansion in chemical potentials is viable.

Let us now focus on the indirect contribution in the language of ref. [15], obtained by replacing $\tilde{\phi}$ by its vacuum expectation value $(v/\sqrt{2}, 0)^T$, where $v \simeq 246$ GeV:

$$\Pi_{\text{E}}^{\text{indirect}}(\tilde{K}) \equiv \frac{v^2 \langle \nu_{L_a}(-\tilde{K}) \bar{\nu}_{L_a}(0) \rangle}{2}. \quad (4.6)$$

Then

$$\rho_a^{\text{indirect}}(\mathcal{K}) = \frac{v^2 \text{Im} \Delta^{-1}(-\mathcal{K} - iu0^+)}{2}, \quad (4.7)$$

where Δ is an analytic continuation of the inverse neutrino propagator and $u \equiv (1, \mathbf{0})$ is the plasma four-velocity.⁵ Suppressing chiral projectors, let us write Δ as

$$\Delta(-\mathcal{K} - iu0^+) \equiv -\mathcal{K} - \mathcal{Z}(\mathcal{K}), \quad \mathcal{Z}(\mathcal{K}) = \text{Re} \mathcal{Z}(\mathcal{K}) + i \text{Im} \mathcal{Z}(\mathcal{K}). \quad (4.9)$$

Assuming that the self-energy is proportional to either \mathcal{K} or \not{u} [40], we find

$$\text{Im} \Delta^{-1}(-\mathcal{K} - iu0^+) = \frac{2(\mathcal{K} + \text{Re} \mathcal{Z})(\mathcal{K} + \text{Re} \Sigma) \cdot \text{Im} \Sigma - \text{Im} \mathcal{Z} [(\mathcal{K} + \text{Re} \Sigma)^2 - (\text{Im} \Sigma)^2]}{[(\mathcal{K} + \text{Re} \Sigma)^2 - (\text{Im} \Sigma)^2]^2 + 4[(\mathcal{K} + \text{Re} \Sigma) \cdot \text{Im} \Sigma]^2}. \quad (4.10)$$

The self-energy Σ can be parametrized as

$$\mathcal{Z}(\mathcal{K}) = \mathcal{K} \left(a + \frac{i\Gamma_{\mathcal{K}}}{2} \right) + \not{u} \left(b + \frac{i\Gamma_u}{2} \right), \quad (4.11)$$

⁵The real part of Δ^{-1} also plays a role, leading to a “dispersive” correction as elaborated upon in appendix A of ref. [20]. Following an analysis similar to that leading to eqs. (4.17) and (4.18), we find that this amounts to the terms $\propto v^2$ in eqs. (2.6) and (2.7), with

$$\kappa_{(a)IJ}^{\pm} \approx \left[\frac{1}{2} + \frac{M_I M_J (M_J^2 + 2kb)}{2[(M_J^2 + 2kb)^2 + k^2 \Gamma_u^2]} \right]_{\mu^{\pm}}, \quad \delta_{(a)IJ}^{\pm} \approx \left[\frac{1}{2} - \frac{M_I M_J (M_J^2 + 2kb)}{2[(M_J^2 + 2kb)^2 + k^2 \Gamma_u^2]} \right]_{\mu^{\pm}}, \quad (4.8)$$

where the coefficients are from eq. (4.11), and μ^{\pm} indicates a symmetrization/antisymmetrization with respect to chemical potentials. In the degenerate ($M_I = M_J$) vacuum ($b = \Gamma_u = 0$) limit, $\kappa^+ = 1$, $\kappa^- = \delta^+ = \delta^- = 0$, whereas in the temperature regime $T \gtrsim 30$ GeV most relevant for us, the helicity-flipping factors “ $\frac{1}{2}$ ” dominate. Equivalent mass corrections, apart from the chemical potential dependence, were obtained in ref. [19].

where the coefficients are defined as real. All the coefficients in eq. (4.11) are proportional to g^2 . We may expect that the coefficient a can be omitted, given that it is subleading compared with the tree-level term \mathcal{K} in eq. (4.9), but for completeness we keep it for the moment and verify that it indeed does not contribute in eqs. (4.8), (4.17), or (4.18).

Inserting eq. (4.11) into eq. (4.10), using the momentum \mathcal{K}_J as needed in eq. (4.3), and counting $M_J^2 \sim g^2 T^2$, we find that

$$\rho_a^{\text{indirect}}(\mathcal{K}_J) = \frac{v^2}{2[(M_J^2 + 2kb)^2 + k^2\Gamma_u^2]} \left\{ \beta_{\mathcal{K}} \mathcal{K}_J + \beta_u \not{u} \right\}. \quad (4.12)$$

Here, in an expansion in M_J/k , the coefficients read

$$\beta_{\mathcal{K}} \approx \left(\frac{M_J^2}{2} \right) \Gamma_{\mathcal{K}} + \left[k(1 + 2a) + b + \frac{M_J^2}{2k} \right] \Gamma_u, \quad (4.13)$$

$$\beta_u \approx b \left(bk + M_J^2 \right) \Gamma_{\mathcal{K}} + \frac{1}{2} \left[b^2 - M_J^2(1 + 2a) + \frac{\Gamma_u(\Gamma_u + 2k\Gamma_{\mathcal{K}})}{4} \right] \Gamma_u. \quad (4.14)$$

Terms up to $\mathcal{O}(g^4 T^2)$ have been retained in $\beta_{\mathcal{K}}$ and up to $\mathcal{O}(g^6 T^3)$ in β_u ; this is because $\beta_{\mathcal{K}}$ is weighted by a coefficient of $\mathcal{O}(g^2 T)$ in eq. (4.16).

The matrix elements of eq. (4.12), needed in eq. (4.3), read

$$\bar{u}_{\mathbf{k}(-)J} a_L (\beta_{\mathcal{K}} \mathcal{K}_J + \beta_u \not{u}) a_R u_{\mathbf{k}(-)I} \approx M_I M_J \left(\beta_{\mathcal{K}} + \frac{\beta_u}{2k} \right), \quad (4.15)$$

$$\bar{u}_{\mathbf{k}(+)J} a_L (\beta_{\mathcal{K}} \mathcal{K}_J + \beta_u \not{u}) a_R u_{\mathbf{k}(+)I} \approx \beta_{\mathcal{K}} M_J^2 \left(1 + \frac{M_I^2 - M_J^2}{8k^2} \right) + \beta_u \left(2k + \frac{M_I^2 + M_J^2}{4k} \right). \quad (4.16)$$

Inserting eqs. (4.13) and (4.14) and working to leading order in g^2 , we find the helicity-conserving and helicity-flipping coefficients

$$\Omega_{(a-)IJ}^{\text{indirect}} \approx \frac{v^2 M_I M_J}{2[(M_J^2 + 2kb)^2 + k^2\Gamma_u^2]} \left\{ \Gamma_u \right\}, \quad (4.17)$$

$$\Omega_{(a+)IJ}^{\text{indirect}} \approx \frac{v^2}{8k^2} \left\{ \Gamma_u + 2k\Gamma_{\mathcal{K}} \right\}. \quad (4.18)$$

Parametrically, the helicity-flipping rate $\Omega_{(a+)}^{\text{indirect}}$ is suppressed by $\mathcal{O}(g^2)$ with respect to the helicity-conserving rate $\Omega_{(a-)}^{\text{indirect}}$, and does not contain the possibility of resonant enhancement (the latter observation conforms with refs. [19, 41]). On the other hand, we find that in general $2k\Gamma_{\mathcal{K}} > \Gamma_u$ at high temperatures, cf. section 5. This anticipates the situation in the symmetric phase, where $\Omega_{(a-)IJ}$ is suppressed by $\sim M_I M_J / (gT)^2$ with respect to $\Omega_{(a+)IJ}$ [20].

5 Determination of rate coefficients for the indirect contribution

We now turn to the determination of the coefficients b , Γ_u and $\Gamma_{\mathcal{K}}$ that are defined through eqs. (4.9) and (4.11) and that parametrize the indirect contribution to masses

and rate coefficients through eqs. (4.8), (4.17) and (4.18), respectively. Three different regimes are considered (remaining always in the broken phase): “high temperatures”, $500 \text{ GeV} \gtrsim \pi T \gg m_W$; “intermediate temperatures”, $\pi T \sim m_W$; and “low temperatures”, $15 \text{ GeV} \lesssim \pi T \ll m_W$.

The starting point, eq. (4.9), involves a specific analytic continuation, and some care is needed for implementing it properly in the broken phase. We first note that in eq. (4.2) the combination $k_n - i\mu_a$ is analytically continued to $-i[k_0 + i0^+]$, whereas in eqs. (4.6) and (4.7) the combination $-k_n + i\mu_a$ is analytically continued to $i[k_0 + i0^+]$. The latter can be re-interpreted as $k_n + i\mu_a$ analytically continued to the “advanced” frequency $-i[k_0 - i0^+]$, and subsequently taken with an inverted sign of k_0 . In other words, denoting by $\Phi(\mathcal{K}, \dots)|_{k_n+i\mu_a \rightarrow -i[k_0-i0^+]}$ the *advanced self-energy before* the last sign inversion, and factoring out gauge couplings corresponding to Z^0 or W^\pm exchange, we can write

$$\Delta(-\mathcal{K} - iu0^+) = -\mathcal{K} + (g_1^2 + g_2^2) \Phi(-\mathcal{K}, \dots) + 2g_2^2 \Phi(-\mathcal{K}, \dots). \quad (5.1)$$

Here ... stands for masses and chemical potentials pertinent to the channel in question.

Now, there is a complication with this setup, arising because in the broken phase most particles feel a gauge field background, parametrized through μ_Y and μ_A via eq. (3.4), cf. table 1. Whenever possible it is very convenient to “resum” this gauge field background into the corresponding propagators. But then we must make sure that the relationship corresponding to chemical equilibrium,

$$\mu_3 = \mu_1 + \mu_2, \quad (5.2)$$

is respected in any $1 \leftrightarrow 2$ reaction. Thus the Matsubara frequencies of the corresponding particles should read $\tilde{k}_n = k_n + i\mu_3$, $\tilde{q}_n = q_n + i\mu_1$, and $\tilde{p}_n = p_n + i\mu_2$, with $\tilde{k}_n = \tilde{q}_n + \tilde{p}_n$, and the analytic continuation needed for computing $\Phi(\mathcal{K}, \dots)$ with resummed propagators reads

$$k_n + i\mu_{\nu_{La}} \rightarrow -i[k_0 - i0^+], \quad (5.3)$$

replacing the unresummed analytic continuation $k_n + i\mu_a \rightarrow -i[k_0 - i0^+]$.

5.1 Real part of the active neutrino self-energy

Let us first consider the real part of the advanced self-energy, parametrized by the function b in eq. (4.11). Like in eq. (5.1), there are two gauge channels, and in addition there is a term linear in μ_Z , originating from a 1-loop Z^0 -boson tadpole contribution.⁶ With the sign conventions of eq. (4.9), this implies that

$$b = (g_1^2 + g_2^2) \mathcal{E}(m_Z, \mu_{\nu_{La}}, \mu_{Z^0}) + 2g_2^2 \mathcal{E}(m_W, \mu_{e_{La}}, \mu_{W^+}) - \frac{\mu_Z}{2}, \quad (5.4)$$

where the arguments show the masses and chemical potentials appearing in the loop, and μ_Z is given in eq. (A.7). According to table 1 and the definitions in eq. (3.7), $\mu_{\nu_{La}} = \mu_a - \mu_Z/2$, $\mu_{Z^0} = 0$, $\mu_{e_{La}} = \mu_a - \mu_Q + \mu_Z(\frac{1}{2} - s^2)$, $\mu_{W^+} = \mu_Q - \mu_Z(1 - s^2)$. We omit the appearance

⁶Alternatively, the existence of such a term can be deduced from paying careful attention to the difference between unresummed and resummed analytic continuations, as alluded to around eq. (5.3).

of μ_z inside the function \mathcal{E} , because this contribution is suppressed by $\sim \alpha/\pi$ compared with the explicit appearance of μ_z in the last term of eq. (5.4).

In order to determine \mathcal{E} , the inverse neutrino propagator of eq. (4.9) can be computed with the gauge propagators of eqs. (3.14) and (3.16). For Φ of eq. (5.1) this implies ($D \equiv 4 - 2\epsilon$)

$$\Phi^{\text{Born}}(\mathcal{K}, m, \mu_1, \mu_2) \equiv \frac{D-2}{4} \not\int_{\mathcal{P}} \frac{i(\tilde{\mathcal{K}} - \tilde{\mathcal{P}})}{[(\tilde{k}_n - \tilde{p}_n)^2 + \epsilon_1^2](\tilde{p}_n^2 + \epsilon_2^2)} \Big|_{\tilde{k}_n \rightarrow -i[k_0 - i0^+]}. \quad (5.5)$$

Here $\epsilon_1 \equiv |\mathbf{k} - \mathbf{p}|$, $\epsilon_2 \equiv \sqrt{p^2 + m^2}$, and the chemical potentials are related by eq. (5.2). After carrying out the Matsubara sum, taking the real part of the advanced propagator, and recalling the conventions in eqs. (4.9), (4.11) and (5.4), we obtain ($\mathbb{P} \equiv$ principal value)

$$\begin{aligned} & -8\pi^2 k \mathcal{E}(m, \mu_1, \mu_2) \\ &= \int_0^\infty dp n_{\text{F}}(p) \mathbb{P} \left[p + \frac{m^2}{8k} \ln \left| \frac{m^2 - 4kp}{m^2 + 4kp} \right| + \frac{4kp m^2 \mu_1}{m^4 - 16k^2 p^2} \right] \\ &+ \int_m^\infty d\epsilon n_{\text{B}}(\epsilon) \mathbb{P} \left\{ p + \frac{m^2}{8k} \ln \left| \frac{m^2 - 4k^2 - 4kp}{m^2 - 4k^2 + 4kp} \right| \right. \\ &\left. + \frac{k m^2 \mu_2}{p} \left[\frac{(\epsilon + p)^2}{4k^2(\epsilon + p)^2 - m^4} + \frac{(\epsilon - p)^2}{4k^2(\epsilon - p)^2 - m^4} \right] \right\}_{p=\sqrt{\epsilon^2 - m^2}} + \mathcal{O}(\mu_i^2). \quad (5.6) \end{aligned}$$

Eq. (5.6) can be simplified at high and low temperatures. For $\pi T \gg m$, we find

$$\mathcal{E}(m, \mu_1, \mu_2) \stackrel{\pi T \gg m}{\approx} -\frac{T^2}{32k} + \frac{m^2 \mu_1}{64\pi^2 k^2} \ln \left(\frac{3.5278kT}{m^2} \right) - \frac{mT\mu_2}{32\pi k^2} + \mathcal{O}(\mu_i^2). \quad (5.7)$$

In each structure only the leading term in an expansion in $m/(\pi T)$ is shown. The μ -independent part corresponds to an ‘‘asymptotic’’ lepton thermal mass [40]. For $\pi T \ll m$,

$$\mathcal{E}(m, \mu_1, \mu_2) \stackrel{\pi T \ll m}{\approx} \frac{7\pi^2 T^4 k}{180m^4} - \frac{\mu_1 T^2}{24m^2} + \mathcal{O}(\mu_i^2). \quad (5.8)$$

The μ -independent part is equivalent to the classic result from ref. [50]. After inserting μ_z from eq. (A.7) and recalling that the Fermi constant reads $\sqrt{2}G_{\text{F}} = g_2^2/(4m_{\text{W}}^2) = 1/v^2$, the μ -dependent part of b agrees with the function $-c$ as given in eq. (3.13) of ref. [35].

5.2 Widths at high temperatures: $2 \leftrightarrow 2$ scatterings with soft gauge exchange

In the high-temperature regime, the determination of the active neutrino width requires a resummed computation [15], which profits from light-cone sum rules [42–45]. The leading contribution originates from scatterings mediated by Bose-enhanced soft gauge bosons. In order to determine this contribution, the gauge boson propagator needs to be Hard Thermal Loop (HTL) resummed [46–49]. Parametrically, HTL effects are important when $m_{\text{W}} \lesssim gT$, i.e. $v \lesssim T$. As elaborated upon around eq. (3.6), the inclusion of chemical potentials is complicated in this regime beyond linear order. Nevertheless, we can show that chemical potentials are *not* expected to play a role at linear order, because of a general symmetry property of the soft contribution (see below).

In terms of Φ of eq. (5.1), the HTL-resummed result has the form⁷

$$\Phi^{\text{HTL}}(\mathcal{K}, \dots) \equiv \frac{1}{4} \rlap{-}\int\limits_P \frac{\gamma_\mu [-i(\tilde{K} - \tilde{P})] \gamma_\nu}{(\tilde{k}_n - \tilde{p}_n)^2 + (\mathbf{k} - \mathbf{p})^2} \langle A_\mu(\tilde{P}) A_\nu(-\tilde{P}) \rangle \Big|_{\tilde{k}_n \rightarrow -i[k_0 - i0^+]} \quad (5.9)$$

where $\tilde{k}_n \equiv k_n + i\mu_3$, $\tilde{p}_n \equiv p_n + i\mu_2$, and the chemical potentials are related through eq. (5.2). In Feynman gauge the gauge propagator can be expressed as

$$\langle A_\mu(\tilde{P}) A_\nu(-\tilde{P}) \rangle = \frac{\mathbb{P}_{\mu\nu}^{\text{T}}(\tilde{P})}{\tilde{P}^2 + m^2 + \Pi_{\text{T}}(\tilde{P})} + \frac{\mathbb{P}_{\mu\nu}^{\text{E}}(\tilde{P})}{\tilde{P}^2 + m^2 + \Pi_{\text{E}}(\tilde{P})} + \frac{\tilde{P}_\mu \tilde{P}_\nu}{\tilde{P}^2(\tilde{P}^2 + m^2)} \quad (5.10)$$

where m depends on the gauge channel; the self-energies $\Pi_{\text{T,E}}$ can be found in appendix B of ref. [15] and their relevant limiting values in eqs. (B.2) and (B.3); and the projectors read $\mathbb{P}_{\mu\nu}^{\text{T}}(\tilde{P}) \equiv \delta_{\mu i} \delta_{\nu j} (\delta_{ij} - p_i p_j / p^2)$, $\mathbb{P}_{\mu\nu}^{\text{E}}(\tilde{P}) \equiv \delta_{\mu\nu} - \tilde{P}_\mu \tilde{P}_\nu / \tilde{P}^2 - \mathbb{P}_{\mu\nu}^{\text{T}}(\tilde{P})$. Inserting the projectors into eq. (5.9) we obtain

$$\begin{aligned} \Phi^{\text{HTL}}(\mathcal{K}, \dots) = \frac{1}{4} \rlap{-}\int\limits_P \left\{ \frac{i\tilde{K}}{(\tilde{K} - \tilde{P})^2} \left[\frac{1}{\tilde{P}^2 + m^2} - \frac{1}{\tilde{P}^2 + m^2 + \Pi_{\text{E}}(\tilde{P})} \right] \right. \\ \left. + \frac{2(\mathbf{k} \cdot \boldsymbol{\gamma} - \frac{\mathbf{p} \cdot \mathbf{k} \mathbf{p} \cdot \boldsymbol{\gamma}}{p^2})}{(\tilde{K} - \tilde{P})^2} \left[\frac{1}{\tilde{P}^2 + m^2 + \Pi_{\text{T}}(\tilde{P})} - \frac{1}{\tilde{P}^2 + m^2 + \Pi_{\text{E}}(\tilde{P})} \right] \right. \\ \left. + \frac{i(D-2)(\tilde{K} - \tilde{P})}{(\tilde{K} - \tilde{P})^2} \frac{1}{\tilde{P}^2 + m^2 + \Pi_{\text{T}}(\tilde{P})} \right\} \Big|_{\tilde{k}_n \rightarrow -i[k_0 - i0^+]} \quad (5.11) \end{aligned}$$

In order to proceed, we write the resummed propagators in a spectral representation:

$$\frac{1}{\tilde{P}^2 + m^2 + \Pi_i(\tilde{P})} = \int_{-\infty}^{\infty} \frac{dp_0}{\pi} \frac{\rho_i(p_0, \mathbf{p})}{p_0 - i\tilde{p}_n} \quad (5.12)$$

Then the Matsubara sum can be carried out. Subsequently we take the cut and keep the channel leading to a *soft* contribution from momenta $p_0, p \ll k, \pi T$. Setting $\mathcal{K} \rightarrow -\mathcal{K}$ as in eq. (5.1), and taking the sign relevant for \mathcal{Z} in eq. (4.9), we find

$$\begin{aligned} -\text{Im} \Phi^{\text{HTL}}(-\mathcal{K}, \dots) \\ = \frac{1}{4} \int_{-\infty}^k dp_0 \int_{\mathbf{p}} \frac{\delta(k - p_0 - |\mathbf{k} - \mathbf{p}|)}{2|\mathbf{k} - \mathbf{p}|} [1 - n_{\text{F}}(k - p_0 - \mu_1) + n_{\text{B}}(p_0 - \mu_2)] \\ \times \left[\mathcal{K} (\rho_{\text{free}} - \rho_{\text{E}}) + 2 \left(\mathbf{k} \cdot \boldsymbol{\gamma} - \frac{\mathbf{p} \cdot \mathbf{k} \mathbf{p} \cdot \boldsymbol{\gamma}}{p^2} \right) (\rho_{\text{T}} - \rho_{\text{E}}) + (D-2)(\mathcal{K} - \mathcal{P}) \rho_{\text{T}} \right], \end{aligned} \quad (5.13)$$

where ρ_{free} is the spectral function corresponding to $1/(\tilde{P}^2 + m^2)$.

Next, let us denote the structures relevant for eqs. (4.17) and (4.18) by

$$\Gamma_{(-)}^{\text{HTL}} \equiv \Gamma_u^{\text{HTL}} \quad , \quad \Gamma_{(+)}^{\text{HTL}} \equiv \Gamma_u^{\text{HTL}} + 2k\Gamma_{\mathcal{K}}^{\text{HTL}} \quad (5.14)$$

⁷Eq. (5.9) looks like a $1 \leftrightarrow 2$ contribution but is really a $2 \leftrightarrow 2$ contribution, because it originates from the Landau damping part of the gauge field propagator, which is itself induced by $2 \leftrightarrow 1$ scatterings.

The corresponding contributions to Φ are denoted by $\Phi_{(\tau)}^{\text{HTL}}$, $\tau = \pm$. Carrying out the angular integral in eq. (5.13) and setting $D \rightarrow 4$, we get

$$\begin{aligned}
 -\text{Im} \Phi_{(\tau)}^{\text{HTL}}(-\mathcal{K}, \dots) &= \frac{1}{8\pi^2} \int_{-\infty}^k dp_0 \int_{|p_0|}^{2k-p_0} dp p [1 - n_{\text{F}}(k - p_0 - \mu_1) + n_{\text{B}}(p_0 - \mu_2)] \\
 &\times \left\{ \delta_{\tau,-} \left[\frac{p_{\perp}^2}{p^2} (\rho_{\text{T}} - \rho_{\text{E}}) + \frac{p^2 - p_0^2}{2k^2} \rho_{\text{T}} \right] \right. \\
 &\left. + \delta_{\tau,+} \left[\rho_{\text{free}} - \rho_{\text{E}} - \frac{p_{\perp}^2}{p^2} (\rho_{\text{T}} - \rho_{\text{E}}) + \frac{(2k - p_0)^2 - p^2}{2k^2} \rho_{\text{T}} \right] \right\}, \quad (5.15)
 \end{aligned}$$

where the energy conservation constraint $|\mathbf{k} - \mathbf{p}| + p_0 = k$ in eq. (5.13) permitted us to write

$$p_{\perp}^2 \equiv p^2 - \frac{(\mathbf{k} \cdot \mathbf{p})^2}{k^2} = (p^2 - p_0^2) \left[\left(1 - \frac{p_0}{2k}\right)^2 - \left(\frac{p}{2k}\right)^2 \right]. \quad (5.16)$$

As a final step, we again focus on the contribution from the soft domain $p, p_0 \ll k, \pi T$. Then we can drop terms suppressed by p/k or p_0/k from eq. (5.15). According to eq. (5.16), we can subsequently write $\int_{|p_0|}^{2k-p_0} dp p \approx \int_0^{2k} dp_{\perp} p_{\perp}$ and $p_{\parallel}^2 \equiv p^2 - p_{\perp}^2 \approx p_0^2$. Furthermore, the leading-order contribution originates from the Bose-enhanced structure $n_{\text{B}}(p_0 - \mu_2) \approx T/(p_0 - \mu_2) \gg 1$. The oddness of the p_0 -integrand implies that μ_2 only contributes at $\mathcal{O}(\mu_2^2)$ and can be omitted. Thereby eq. (5.15) becomes

$$\begin{aligned}
 -\text{Im} \Phi_{(\tau)}^{\text{HTL}}(-\mathcal{K}, \dots) &\approx \frac{T}{8\pi^2} \int_0^{2k} dp_{\perp} p_{\perp} \int_{-\infty}^{\infty} \frac{dp_0}{p_0} \left\{ \delta_{\tau,-} \left[\frac{p_{\perp}^2}{p_{\perp}^2 + p_0^2} (\rho_{\text{T}} - \rho_{\text{E}}) \right] \right. \\
 &\left. + \delta_{\tau,+} \left[\rho_{\text{free}} - \rho_{\text{E}} + 2\rho_{\text{T}} - \frac{p_{\perp}^2}{p_{\perp}^2 + p_0^2} (\rho_{\text{T}} - \rho_{\text{E}}) \right] \right\}, \quad (5.17)
 \end{aligned}$$

where the spatial momentum is $\mathbf{p} \approx \mathbf{p}_{\perp} + p_0 \mathbf{e}_{\mathbf{k}}$.

The integral over p_0 can now be carried out. It is illustrative to first consider the term involving ρ_{free} . Expressing the spectral function as a discontinuity of the “resolvent” \mathcal{R} , we are faced with an integral of the type

$$I \equiv \int_{-\infty}^{\infty} \frac{dp_0}{p_0} \frac{\mathcal{R}(p_0 + i0^+, p_{\perp}, p_0) - \mathcal{R}(p_0 - i0^+, p_{\perp}, p_0)}{2i}, \quad (5.18)$$

$$\mathcal{R}(p_0, p_{\perp}, p_{\parallel}) \equiv \frac{1}{p_{\perp}^2 + p_{\parallel}^2 - p_0^2 + m^2}. \quad (5.19)$$

Noting that

$$\mathcal{R}(p_0 + i0^+, p_{\perp}, p_0) = \frac{1}{p_{\perp}^2 - ip_0 0^+ + m^2} \quad (5.20)$$

is actually regular near the real p_0 -axis, and defining $\tilde{\mathcal{R}}(p_0) \equiv 1/(p_{\perp}^2 + m^2)$, I can be re-expressed as a complex integral,

$$I = \int_c \frac{\tilde{\mathcal{R}}(p_0)}{2ip_0}, \quad c = \begin{array}{c} \begin{array}{c} \xrightarrow{\hspace{1cm}} \\ \xleftarrow{\hspace{1cm}} \end{array} \\ \begin{array}{c} \xrightarrow{\hspace{1cm}} \\ \xleftarrow{\hspace{1cm}} \end{array} \end{array} = \begin{array}{c} \xrightarrow{\hspace{1cm}} \\ \xleftarrow{\hspace{1cm}} \end{array} \quad (5.21)$$

We proceed with the help of the residue theorem. There is a contribution from the pole at $p_0 = 0$, amounting to $\pi/(p_\perp^2 + m^2)$. In addition there is a contribution from arcs that can be sent to $|p_0| \rightarrow \infty$, yielding $-\pi/(p_\perp^2 + m^2)$. Summing together, ρ_{free} does not contribute.

Now, let us inspect the other terms in eq. (5.17). For those involving $p_\perp^2/(p_\perp^2 + p_0^2)$, the arcs at $|p_0| \rightarrow \infty$ do not contribute because of the additional suppression by $\sim 1/p_0^2$. On the other hand there is an additional pole at $p_0 = \pm ip_\perp$, but this does not contribute either, because Π_T and Π_E coincide for $p = 0$. Therefore only the pole at $p_0 = 0$ has an effect; this is the content of the sum rule obtained in refs. [42, 43]. As recalled in appendix B, in this limit Π_T vanishes and Π_E is replaced by a mass parameter m_E^2 .

Finally, for the term $-\rho_E + 2\rho_T$ in eq. (5.17), there is a contribution from both the pole at $p_0 = 0$ and the arcs at $|p_0| \rightarrow \infty$ [44, 45]. As elaborated upon in appendix B, at the far-away arcs Π_E vanishes and Π_T is replaced by a mass parameter $m_E^2/2$. Combining the terms we obtain

$$-\text{Im} \Phi_{(\tau)}^{\text{HTL}}(-\mathcal{K}, \dots) \approx \frac{T}{8\pi} \int_0^{2k} dp_\perp p_\perp \left\{ \delta_{\tau,-} \left[\frac{1}{p_\perp^2 + m^2} - \frac{1}{p_\perp^2 + m^2 + m_E^2} \right] + 2\delta_{\tau,+} \left[\frac{1}{p_\perp^2 + m^2} - \frac{1}{p_\perp^2 + m^2 + m_E^2/2} \right] \right\}. \quad (5.22)$$

For the neutral sector, the temperature-dependent weak mixing angle needs to be evaluated in the proper momentum domain. Inserting the prefactors from eq. (5.1) and making use of the angles $\theta, \tilde{\theta}, \bar{\theta}$ and the thermally modified masses $m_{\tilde{W}}, m_{\tilde{Z}}, m_{\tilde{Q}}, m_{\tilde{W}}, m_{\tilde{Z}}, m_{\tilde{Q}}$ defined in appendix B, we get

$$\Gamma_u^{\text{HTL}} \approx \frac{T}{16\pi} \left\{ 2g_2^2 \ln \left(\frac{1 + 4k^2/m_W^2}{1 + 4k^2/m_{\tilde{W}}^2} \right) + (g_1^2 + g_2^2) \left[\cos^2(\theta - \tilde{\theta}) \ln \left(\frac{1 + 4k^2/m_Z^2}{1 + 4k^2/m_{\tilde{Z}}^2} \right) + \sin^2(\theta - \tilde{\theta}) \ln \left(\frac{1 + 4k^2/m_Z^2}{1 + 4k^2/m_{\tilde{Q}}^2} \right) \right] \right\}, \quad (5.23)$$

$$\Gamma_u^{\text{HTL}} + 2k\Gamma_{\mathcal{K}}^{\text{HTL}} \approx \frac{T}{8\pi} \left\{ 2g_2^2 \ln \left(\frac{1 + 4k^2/m_W^2}{1 + 4k^2/m_{\tilde{W}}^2} \right) + (g_1^2 + g_2^2) \left[\cos^2(\theta - \bar{\theta}) \ln \left(\frac{1 + 4k^2/m_Z^2}{1 + 4k^2/m_{\tilde{Z}}^2} \right) + \sin^2(\theta - \bar{\theta}) \ln \left(\frac{1 + 4k^2/m_Z^2}{1 + 4k^2/m_{\tilde{Q}}^2} \right) \right] \right\}. \quad (5.24)$$

5.3 Widths at intermediate temperatures: Born 1 \rightarrow 2 decays

In the intermediate temperature range $\pi T \sim m_W$, no resummations are necessary and the inverse neutrino propagator is given by eq. (5.5). Its imaginary part, called the Born rate, can be expressed in terms of logarithms and dilogarithms denoted by

$$l_{1b}(p) \equiv \ln(1 - e^{-p/T}), \quad l_{2b}(p) \equiv \text{Li}_2(e^{-p/T}), \quad (5.25)$$

$$l_{1f}(p) \equiv \ln(1 + e^{-p/T}), \quad l_{2f}(p) \equiv \text{Li}_2(-e^{-p/T}), \quad (5.26)$$

which satisfy $Tl'_{2b}(p) = l_{1b}(p)$, $Tl'_{2f}(p) = l_{1f}(p)$, $Tl'_{1b}(p) = n_B(p)$, and $Tl'_{1f}(p) = -n_F(p)$. Parallelling the splitup in eqs. (5.1) and (5.4), we can write

$$\Gamma_{u,\mathcal{K}}^{\text{Born}} = (g_1^2 + g_2^2) \tilde{\Gamma}_{u,\mathcal{K}}^{\text{Born}}(m_Z, \mu_{\nu_{La}}, \mu_{Z^0}) + 2g_2^2 \tilde{\Gamma}_{u,\mathcal{K}}^{\text{Born}}(m_W, \mu_{e_{La}}, \mu_{W^+}). \quad (5.27)$$

For $\pi T \sim m_W$, $v \sim \pi T/g \gg T$, so according to eq. (3.7) we can omit μ_Z in comparison with μ_Q , and set $\mu_{\nu_{La}} \rightarrow \mu_a$, $\mu_{Z^0} \rightarrow 0$, $\mu_{e_{La}} \rightarrow \mu_a - \mu_Q$, $\mu_{W^+} \rightarrow \mu_Q$. For the combinations appearing in eqs. (4.17) and (4.18) we need (assuming $\mathcal{K}^2 \ll m^2$)

$$\tilde{\Gamma}_u^{\text{Born}}(m, \mu_1, \mu_2) = \frac{m^2 T}{32\pi k^2} \left[l_{1f} \left(\frac{m^2}{4k} + \mu_1 \right) - l_{1b} \left(k + \frac{m^2}{4k} - \mu_2 \right) \right], \quad (5.28)$$

$$(\tilde{\Gamma}_u^{\text{Born}} + 2k \tilde{\Gamma}_{\mathcal{K}}^{\text{Born}})(m, \mu_1, \mu_2) = \frac{T^2}{8\pi k} \left[l_{2b} \left(k + \frac{m^2}{4k} - \mu_2 \right) - l_{2f} \left(\frac{m^2}{4k} + \mu_1 \right) \right], \quad (5.29)$$

where it is understood that the results can be expanded to first order in chemical potentials. We note that in the high-temperature limit, when $k \sim \pi T$ and $m^2 \ll kT$, the helicity-flipping interaction rate, $\tilde{\Gamma}_u^{\text{Born}} + 2k \tilde{\Gamma}_{\mathcal{K}}^{\text{Born}}$, is larger than the helicity-conserving one, $\tilde{\Gamma}_u^{\text{Born}}$. In the low-temperature limit, both become exponentially suppressed.

5.4 Widths at low temperatures: Fermi $2 \leftrightarrow 2$ scatterings and $1 \rightarrow 3$ decays

The low-temperature limits of Γ_u and $\Gamma_{\mathcal{K}}$ originate from $2 \leftrightarrow 2$ scatterings and $1 \rightarrow 3$ decays among light fermions. To address these, we recall that at $\pi T \ll m_W$, weak gauge bosons can be integrated out and the physics described by the Fermi model. The four-fermion coupling is proportional to G_F , and the rates of $2 \leftrightarrow 2$ scatterings to G_F^2 .

In this situation, the advanced inverse neutrino propagator can be written as

$$\Delta(\mathcal{K} - iu0^+) = \mathcal{K} + \sum_{\text{channels}} \{ c_{1L} T_{1L}(\mu_1, \mu_2, \mu_3) + c_{1R} T_{1R}(\mu_1, \mu_2, \mu_3) + c_2 T_2(\mu_1, \mu_2, \mu_3) \}, \quad (5.30)$$

where the coefficients c_i and the chemical potentials μ_i are listed in table 2 (given that we are at $T \ll v$, we can again set $\mu_Z \rightarrow 0$). The different structures can be compactly expressed within the imaginary-time formalism:

$$T_{1L} = 4G_F^2 \oint_{\{\tilde{P}_1 \tilde{P}_2 \tilde{P}_3\}} \delta(\tilde{K} - \Sigma_i \tilde{P}_i) a_R \gamma_\mu \frac{i\tilde{P}_1}{\tilde{P}_1^2} \gamma_\nu a_L \text{Tr} \left[\frac{i\tilde{P}_2}{\tilde{P}_2^2} \gamma_\mu \frac{i\tilde{P}_3}{\tilde{P}_3^2} \gamma_\nu a_L \right]_{\tilde{k}_n \rightarrow -i[k_0 - i0^+]}, \quad (5.31)$$

$$T_{1R} = 4G_F^2 \oint_{\{\tilde{P}_1 \tilde{P}_2 \tilde{P}_3\}} \delta(\tilde{K} - \Sigma_i \tilde{P}_i) a_R \gamma_\mu \frac{i\tilde{P}_1}{\tilde{P}_1^2} \gamma_\nu a_L \text{Tr} \left[\frac{i\tilde{P}_2}{\tilde{P}_2^2} \gamma_\mu \frac{i\tilde{P}_3}{\tilde{P}_3^2} \gamma_\nu a_R \right]_{\tilde{k}_n \rightarrow -i[k_0 - i0^+]}, \quad (5.32)$$

$$T_2 = 4G_F^2 \oint_{\{\tilde{P}_1 \tilde{P}_2 \tilde{P}_3\}} \delta(\tilde{K} - \Sigma_i \tilde{P}_i) a_R \gamma_\mu \frac{i\tilde{P}_1}{\tilde{P}_1^2} \gamma_\nu \frac{i\tilde{P}_2}{\tilde{P}_2^2} \gamma_\mu \frac{i\tilde{P}_3}{\tilde{P}_3^2} \gamma_\nu a_L \Big|_{\tilde{k}_n \rightarrow -i[k_0 - i0^+]}. \quad (5.33)$$

Here $\oint_{\{\dots\}}$ indicates a sum-integral over fermionic Matsubara momenta; $\oint_P \delta(P) \equiv 1$; $\tilde{P}_i \equiv (p_{ni} + i\mu_i, \mathbf{p}_i)$; and Euclidean conventions are used for Dirac matrices.

After carrying out the Matsubara sums, substituting $\tilde{k}_n \rightarrow -i[k_0 - i0^+]$, setting $\mathcal{K} \rightarrow -\mathcal{K}$, identifying the self-energy \mathcal{Z} according to eq. (4.9), and taking the imaginary part,

channel	coefficient	μ_1	μ_2	μ_3
WW + quarks	$c_{1L} = 2N_c(V_{ud} ^2 + V_{us} ^2 + V_{cd} ^2 + V_{cs} ^2)$	$\mu_{e_{La}}$	$-\mu_{dL}$	μ_{uL}
WW + leptons	$c_{1L} = 2 \sum_{b=1}^3$	$\mu_{e_{La}}$	$-\mu_{e_{Lb}}$	$\mu_{\nu_{Lb}}$
ZZ + quarks	$c_{1L} = \frac{N_c}{2} \left(1 - \frac{4s^2}{3}\right)^2 \sum_{u,c}$	$\mu_{\nu_{La}}$	$-\mu_{uL}$	μ_{uL}
	$c_{1R} = \frac{N_c}{2} \left(-\frac{4s^2}{3}\right)^2 \sum_{u,c}$	$\mu_{\nu_{La}}$	$-\mu_{uR}$	μ_{uR}
	$c_{1L} = \frac{N_c}{2} \left(-1 + \frac{2s^2}{3}\right)^2 \sum_{d,s,b}$	$\mu_{\nu_{La}}$	$-\mu_{dL}$	μ_{dL}
	$c_{1R} = \frac{N_c}{2} \left(\frac{2s^2}{3}\right)^2 \sum_{d,s,b}$	$\mu_{\nu_{La}}$	$-\mu_{dR}$	μ_{dR}
ZZ + leptons	$c_{1L} = \frac{1}{2}(-1 + 2s^2)^2 \sum_{b=1}^3$	$\mu_{\nu_{La}}$	$-\mu_{e_{Lb}}$	$\mu_{e_{Lb}}$
	$c_{1R} = \frac{1}{2}(2s^2)^2 \sum_{b=1}^3$	$\mu_{\nu_{La}}$	$-\mu_{e_{Rb}}$	$\mu_{e_{Rb}}$
ZZ + neutrinos	$c_{1L} = \frac{1}{2} \sum_{b=1}^3$	$\mu_{\nu_{La}}$	$-\mu_{\nu_{Lb}}$	$\mu_{\nu_{Lb}}$
	$c_2 = -\frac{1}{2}$	$\mu_{\nu_{La}}$	$-\mu_{\nu_{La}}$	$\mu_{\nu_{La}}$
WZ + leptons	$c_2 = 1 - 2s^2$	$\mu_{e_{La}}$	$-\mu_{e_{La}}$	$\mu_{\nu_{La}}$
	$c_2 = 1 - 2s^2$	$\mu_{\nu_{La}}$	$-\mu_{e_{La}}$	$\mu_{e_{La}}$

Table 2. The coefficients and chemical potentials that appear in eq. (5.30), with $s^2 \equiv \sin^2(\theta)$. Each “channel” is labelled by the gauge bosons and fermions participating in the reaction. For clarity we have assigned separate chemical potentials to different chiral states, but when eq. (3.6) is satisfied as is necessary for a quasiparticle picture, the chemical potentials of chiral partners coincide, cf. table 1.

we get

$$\text{Im } \mathcal{Z}(\mathcal{K}) = \sum_{\text{channels}} \{c_{1L} \mathcal{T}_{1L}(\mu_1, \mu_2, \mu_3) + c_{1R} \mathcal{T}_{1R}(\mu_1, \mu_2, \mu_3) + c_2 \mathcal{T}_2(\mu_1, \mu_2, \mu_3)\}. \quad (5.34)$$

Here the structures are analytic continuations of eqs. (5.31)–(5.33). Restricting to those channels that are kinematically allowed in the massless limit,⁸ we obtain

$$\begin{aligned} \mathcal{T}_i &= 2G_F^2 n_F^{-1}(k_0 - \Sigma_i \mu_i) \int_{\mathbf{p}_1 \mathbf{p}_2 \mathbf{p}_3} \frac{\mathcal{D}_i}{8p_1 p_2 p_3} \\ &\times \{ \delta(\mathcal{P}_1 + \mathcal{P}_2 - \mathcal{P}_3 - \mathcal{K}) n_F(p_1 - \mu_1) n_F(p_2 - \mu_2) [1 - n_F(p_3 + \mu_3)] \\ &+ \delta(\mathcal{P}_1 + \mathcal{P}_3 - \mathcal{P}_2 - \mathcal{K}) n_F(p_1 - \mu_1) [1 - n_F(p_2 + \mu_2)] n_F(p_3 - \mu_3) \\ &+ \delta(\mathcal{P}_2 + \mathcal{P}_3 - \mathcal{P}_1 - \mathcal{K}) [1 - n_F(p_1 + \mu_1)] n_F(p_2 - \mu_2) n_F(p_3 - \mu_3) \\ &+ (\text{kinematically forbidden channels}) \}, \end{aligned} \quad (5.35)$$

⁸At very low temperatures, the masses M_J should be kept non-zero, which leads to $1 \rightarrow 3$ decays through the same expression. In vacuum and with massless final states we find $\Gamma_u^{\text{Fermi}} = 0$, $\Gamma_{\mathcal{K}}^{\text{Fermi}} = G_F^2 M_J^4 / (192\pi^3) \sum_{\text{channels}} \{c_{1L} + c_{1R} - c_2\}$. If only the neutrino channels are open, the sum evaluates to +2. In this regime the equilibrium distribution $n_F(k_T)$ should also be replaced by $n_F(\sqrt{k_T^2 + M_J^2})$.

where we have gone over to Minkowskian conventions, with $p_i \equiv |\mathbf{p}_i|$ and $\mathcal{P}_i \equiv (p_i, \mathbf{p}_i)$. The Dirac traces \mathcal{D}_i appearing in eq. (5.35) can be easily taken:

$$\mathcal{D}_{\text{IL}} \equiv a_{\text{R}} \gamma^\mu \mathcal{P}_1 \gamma^\nu a_{\text{L}} \text{Tr} [\mathcal{P}_2 \gamma_\mu \mathcal{P}_3 \gamma_\nu a_{\text{L}}] = a_{\text{R}} 8 \mathcal{P}_1 \cdot \mathcal{P}_3 \mathcal{P}_2 a_{\text{L}}, \quad (5.36)$$

$$\mathcal{D}_{\text{IR}} \equiv a_{\text{R}} \gamma^\mu \mathcal{P}_1 \gamma^\nu a_{\text{L}} \text{Tr} [\mathcal{P}_2 \gamma_\mu \mathcal{P}_3 \gamma_\nu a_{\text{R}}] = a_{\text{R}} 8 \mathcal{P}_1 \cdot \mathcal{P}_2 \mathcal{P}_3 a_{\text{L}}, \quad (5.37)$$

$$\mathcal{D}_2 \equiv a_{\text{R}} \gamma^\mu \mathcal{P}_1 \gamma^\nu \mathcal{P}_2 \gamma_\mu \mathcal{P}_3 \gamma_\nu a_{\text{L}} = -a_{\text{R}} 8 \mathcal{P}_1 \cdot \mathcal{P}_3 \mathcal{P}_2 a_{\text{L}}. \quad (5.38)$$

We refer to the structures containing $\mathcal{P}_1 \cdot \mathcal{P}_3$ as “ t -channel” and to those containing $\mathcal{P}_1 \cdot \mathcal{P}_2$ as “ s -channel” contributions. Through a renaming of integration variables, together with a permutation of chemical potentials, the three channels in eq. (5.35) can be transformed into the appearance of the first channel.

As a final step, the phase space can be reduced to a convergent two-dimensional integral representation. For the widths in eqs. (4.17) and (4.18), we thereby obtain

$$\Gamma_{(-)}^{\text{Fermi}} \equiv \Gamma_u^{\text{Fermi}}, \quad \Gamma_{(+)}^{\text{Fermi}} \equiv \Gamma_u^{\text{Fermi}} + 2k \Gamma_{\mathcal{K}}^{\text{Fermi}}, \quad (5.39)$$

$$\Gamma_{(\tau)}^{\text{Fermi}} = \sum_{\text{channels}} \left\{ (c_{\text{IL}} - c_2) \left[\Xi_{(\tau)}^t(\mu_1, \mu_2, \mu_3) + \Xi_{(\tau)}^t(\mu_3, \mu_2, \mu_1) + \Xi_{(\tau)}^s(\mu_1, \mu_3, \mu_2) \right] \right. \\ \left. + c_{\text{IR}} \left[\Xi_{(\tau)}^t(\mu_1, \mu_3, \mu_2) + \Xi_{(\tau)}^t(\mu_2, \mu_3, \mu_1) + \Xi_{(\tau)}^s(\mu_1, \mu_2, \mu_3) \right] \right\}. \quad (5.40)$$

Here the t and s -channel integrals read

$$\Xi_{(\tau)}^t(\mu_\alpha, \mu_\beta, \mu_\gamma) = \frac{4G_{\text{F}}^2}{\pi^3 k^2} \int_0^k dp_+ \int_{-\infty}^0 dp_- \left[\delta_{\tau,-} p_+^2 p_-^2 + \delta_{\tau,+} p_+ p_- (p_+ - k)(k - p_-) \right] \\ \times \left[1 - n_{\text{F}}(k - p_0 - \mu_\beta) + n_{\text{B}}(p_0 - \mu_\alpha - \mu_\gamma) \right] \\ \times \left\{ T[l_{\text{1f}}(\mu_\gamma - p_-) - l_{\text{1f}}(p_+ - \mu_\alpha)] \right\}, \quad (5.41)$$

$$\Xi_{(\tau)}^s(\mu_\alpha, \mu_\beta, \mu_\gamma) = \frac{4G_{\text{F}}^2}{\pi^3 k^2} \int_k^\infty dp_+ \int_0^k dp_- \left[\delta_{\tau,-} p_+^2 p_-^2 + \delta_{\tau,+} p_+ p_- (p_+ - k)(k - p_-) \right] \\ \times \left[n_{\text{F}}(p_0 - k + \mu_\gamma) + n_{\text{B}}(p_0 - \mu_\alpha - \mu_\beta) \right] \\ \times \left\{ p + T[l_{\text{1f}}(p_+ - \mu_\alpha) + l_{\text{1f}}(p_+ - \mu_\beta) - l_{\text{1f}}(p_- - \mu_\alpha) - l_{\text{1f}}(p_- - \mu_\beta)] \right\}, \quad (5.42)$$

where l_{1f} is defined in eq. (5.26) and $p_\pm \equiv (p_0 \pm p)/2$. The integrands are supposed to be expanded to leading order in chemical potentials; the coefficients appearing after this expansion are collected in appendix C. At zeroth order in chemical potentials, eq. (C.2) reproduces eqs. (5.34–37) of ref. [15].

6 Determination of rate coefficients for the direct contribution

Let us turn to the direct contribution, which adds up to the indirect contribution according to eq. (2.11). At low temperatures, the largest indirect contribution is helicity-conserving, cf. eq. (4.17), with the helicity-flipping channel in eq. (4.18) lacking the possibility of resonant enhancement. For the direct contribution the roles are interchanged.

channel	coefficient	μ_1	μ_2	μ_3
$Z\phi_0 \rightarrow \bar{\nu}_L\nu_R$	$c_{t1} = (g_1^2 + g_2^2)/2$	μ_{Z^0}	μ_{ϕ_0}	$\mu_{\nu_{La}}$
$Z'\phi_+ \rightarrow \bar{e}_L\nu_R$	$c_{t1} = (g_1^2 + g_2^2)/2$	μ_{Z^0}	μ_{ϕ_+}	$\mu_{e_{La}}$
$W^+\phi_0 \rightarrow \bar{e}_L\nu_R$	$c_{t1} = g_2^2$	μ_{W^+}	μ_{ϕ_0}	$\mu_{e_{La}}$
$W^-\phi_+ \rightarrow \bar{\nu}_L\nu_R$	$c_{t1} = g_2^2$	$-\mu_{W^+}$	μ_{ϕ_+}	$\mu_{\nu_{La}}$
$Z\nu_L \rightarrow \phi_0^*\nu_R$	$c_{s1} = (g_1^2 + g_2^2)/2$	μ_{Z^0}	$\mu_{\nu_{La}}$	μ_{ϕ_0}
$Z'e_L \rightarrow \phi_+^*\nu_R$	$c_{s1} = (g_1^2 + g_2^2)/2$	μ_{Z^0}	$\mu_{e_{La}}$	μ_{ϕ_+}
$W^+e_L \rightarrow \phi_0^*\nu_R$	$c_{s1} = g_2^2$	μ_{W^+}	$\mu_{e_{La}}$	μ_{ϕ_0}
$W^-\nu_L \rightarrow \phi_+^*\nu_R$	$c_{s1} = g_2^2$	$-\mu_{W^+}$	$\mu_{\nu_{La}}$	μ_{ϕ_+}
$\phi_0\nu_L \rightarrow Z\nu_R$	$c_{u1} = (g_1^2 + g_2^2)/2$	μ_{ϕ_0}	$\mu_{\nu_{La}}$	$-\mu_{Z^0}$
$\phi_+e_L \rightarrow Z'\nu_R$	$c_{u1} = (g_1^2 + g_2^2)/2$	μ_{ϕ_+}	$\mu_{e_{La}}$	$-\mu_{Z^0}$
$\phi_0e_L \rightarrow W^-\nu_R$	$c_{u1} = g_2^2$	μ_{ϕ_0}	$\mu_{e_{La}}$	μ_{W^+}
$\phi_+\nu_L \rightarrow W^+\nu_R$	$c_{u1} = g_2^2$	μ_{ϕ_+}	$\mu_{\nu_{La}}$	$-\mu_{W^+}$
$\bar{t}_L t_R \rightarrow \bar{\nu}_L\nu_R$	$c_{s0} = h_t^2 N_c$	$-\mu_{t_L}$	μ_{t_R}	$\mu_{\nu_{La}}$
$\bar{b}_L t_R \rightarrow \bar{e}_L\nu_R$	$c_{s0} = h_t^2 N_c$	$-\mu_{b_L}$	μ_{t_R}	$\mu_{e_{La}}$
$\bar{t}_L\nu_L \rightarrow \bar{t}_R\nu_R$	$c_{t0} = h_t^2 N_c$	$-\mu_{t_L}$	$\mu_{\nu_{La}}$	μ_{t_R}
$\bar{b}_L e_L \rightarrow \bar{t}_R\nu_R$	$c_{t0} = h_t^2 N_c$	$-\mu_{b_L}$	$\mu_{e_{La}}$	μ_{t_R}
$t_R\nu_L \rightarrow t_L\nu_R$	$c_{t0} = h_t^2 N_c$	μ_{t_R}	$\mu_{\nu_{La}}$	$-\mu_{t_L}$
$t_R e_L \rightarrow b_L\nu_R$	$c_{t0} = h_t^2 N_c$	μ_{t_R}	$\mu_{e_{La}}$	$-\mu_{b_L}$

Table 3. The channels, coefficients and chemical potentials (cf. table 1) that appear in eq. (6.2). The field Z' , which is a linear combination of the physical Z and photon fields, is defined below eq. (3.9). When eq. (3.6) is satisfied, the chemical potentials of chiral partner states coincide.

In the ultrarelativistic regime $m \ll \pi T$, $1 \leftrightarrow 2$ reactions are phase-space suppressed. If $m \sim gT$, this implies that $1 \leftrightarrow 2$ rates are of the same order as unsuppressed $2 \leftrightarrow 2$ rates. The $1 \leftrightarrow 2$ processes are also substantially modified by soft higher-order scatterings, i.e. by $1 + n \leftrightarrow 2 + n$ processes with $n \geq 1$, which therefore need to be summed to all orders, via a procedure known as Landau-Pomeranchuk-Migdal (LPM) resummation [32]. At low temperatures, when $m \sim \pi T$, the phase-space suppression is not present, and it is sufficient to consider Born level $1 \rightarrow 2$ decays. In the following we consider $2 \leftrightarrow 2$, resummed $1 + n \leftrightarrow 2 + n$, and Born $1 \leftrightarrow 2$ processes in turn.

6.1 High temperatures: $2 \leftrightarrow 2$ scatterings with lepton or scalar exchange

The direct contribution from $2 \leftrightarrow 2$ scatterings was originally determined in ref. [33], and subsequently resolved into helicity channels and generalized to include chemical potentials relevant for the symmetric phase in ref. [20]. Two separate resummations were needed in the presence of chemical potentials. In the broken phase, the chemical potentials and masses need to be re-adjusted, so that the results of ref. [20] change moderately.

The $2 \leftrightarrow 2$ contribution originates from scatterings with hard momenta $p_i \sim \pi T$ and is not phase-space suppressed. Therefore it can be evaluated in the massless limit, i.e. restricting to a term of the type $\beta_u(2k)$ in the language of eq. (4.16). The numerator of eq. (4.3) becomes

$$\bar{u}_{\mathbf{k}\tau J} a_L \rho_a^{2\leftrightarrow 2, \text{direct}}(\mathcal{K}_J) a_R u_{\mathbf{k}\tau I} \approx \delta_{\tau,+} \text{Tr} \{ \mathcal{K}_J a_L \rho_a^{2\leftrightarrow 2, \text{direct}}(\mathcal{K}_J) a_R \}. \quad (6.1)$$

Consequently we can write the contribution from hard momenta as

$$\Omega_{(a+)IJ}^{2\leftrightarrow 2, \text{direct}, \text{hard}} = \sum_{\text{channels}} c_i \Xi_{(+)}^i(\{\mu_i\}), \quad (6.2)$$

where the coefficients c_i and the associated chemical potentials are listed in table 3. The phase space integrals have forms analogous to eq. (5.35), and are collected in appendix D.

The contribution from hard $2 \leftrightarrow 2$ scatterings, eq. (6.2), needs to be resummed in two ways in order to render it IR finite. This can be implemented by subtracting the problematic terms, and subsequently adding them in a resummed form:

$$\begin{aligned} \Omega_{(a+)IJ}^{2\leftrightarrow 2, \text{direct}} &\equiv \Omega_{(a+)IJ}^{2\leftrightarrow 2, \text{direct}, \text{hard}} - \Omega_{(a+)IJ}^{2\leftrightarrow 2, \text{direct}, \text{subtrL}} + \Omega_{(a+)IJ}^{2\leftrightarrow 2, \text{direct}, \text{softL}} \\ &\quad - \Omega_{(a+)IJ}^{2\leftrightarrow 2, \text{direct}, \text{subtrH}} + \Omega_{(a+)IJ}^{2\leftrightarrow 2, \text{direct}, \text{softH}}. \end{aligned} \quad (6.3)$$

Here ‘‘L’’ and ‘‘H’’ refer to scatterings mediated by soft lepton exchange and taking place off soft Higgs bosons, respectively.

Considering first the lepton exchange contribution, we define a thermal lepton mass as [40]

$$m_\ell^2 = \frac{(g_1^2 + 3g_2^2)T^2}{16} + \mathcal{O}(\mu_i^2). \quad (6.4)$$

The IR-sensitive contribution originates from the t and u -channel terms, $c_{t1} \Xi_{(+)}^{t1} + c_{u1} \Xi_{(+)}^{u1}$. The logarithmic divergence from small momenta can be subtracted with

$$\begin{aligned} \Omega_{(a+)IJ}^{2\leftrightarrow 2, \text{direct}, \text{subtrL}} &\equiv \frac{m_\ell^2}{8\pi k} \int_0^k dp_+ \int_{-\infty}^0 dp_- \left[\frac{n_B(k - \mu_{\phi_0}) + n_F(\mu_{\nu_{La}})}{p^2} \right. \\ &\quad \left. + \frac{n_B(k - \mu_{\phi_+}) + n_F(\mu_{e_{La}})}{p^2} \right], \quad p_\pm \equiv \frac{p_0 \pm p}{2}. \end{aligned} \quad (6.5)$$

The resummed term, obtained by using a HTL propagator for the soft lepton, reads

$$\begin{aligned} \Omega_{(a+)IJ}^{2\leftrightarrow 2, \text{direct}, \text{softL}} &= \frac{m_\ell^2}{16\pi k} \left[n_B(k - \mu_{\phi_0}) + n_F(\mu_{\nu_{La}}) + n_B(k - \mu_{\phi_+}) + n_F(\mu_{e_{La}}) \right] \\ &\quad \times \ln \left(1 + \frac{4k^2}{m_\ell^2} \right). \end{aligned} \quad (6.6)$$

Turning to scatterings off soft Higgs bosons, the problem arises from expanding $n_B(k - p_0 - \mu_2)$ in eq. (D.1), $n_B(k - p_0 - \mu_1)$ in eq. (D.2), and $n_B(p_0 - k + \mu_3)$ in eq. (D.3), to first order in chemical potentials, yielding $\pm \mu_i / (k - p_0)^2$. Then there is a logarithmic divergence

from momenta $p_0 \approx k$. Inserting the coefficients from table 3, the problematic terms can be subtracted with

$$\Omega_{(a+)IJ}^{2\leftrightarrow 2, \text{direct}, \text{subtrH}} \equiv \frac{(g_1^2 + 3g_2^2)(\mu_{\phi_0} + \mu_{\phi_+})T}{4(4\pi)^3 k^2} \times \left\{ \int_0^k dp_0 \int_{p_0}^{2k-p_0} dp \frac{T[l_{1f}(k) - \ln(-\frac{p_-}{T})] + \frac{T^2}{k}[l_{2b}(k) - l_{2f}(k) + \frac{\pi^2}{4}]}{(k-p_0)^2} - \int_k^{2k} dp_0 \int_{2k-p_0}^{p_0} dp \frac{\frac{k}{2} + T[l_{1f}(k) - \ln(\frac{p_-}{T})] + \frac{T^2}{k}[l_{2b}(k) - l_{2f}(k) - \frac{\pi^2}{4}]}{(p_0-k)^2} \right\}. \quad (6.7)$$

The resummed result is obtained by putting the integration domains together, whereby most terms cancel, and integrating the remainder over a domain regularized by a scalar mass. At this point, we recall the discussion around eqs. (3.15), (3.16), namely that neutral scalars cannot be treated as being in chemical equilibrium if $\mu_Z \neq 0$. Therefore we borrow an argument from the parametric regime $v \gg T$, and impose eq. (3.6). Then $\mu_{\phi_0} + \mu_{\phi_+} = \mu_Q + s^2 \mu_Z \simeq \mu_Q$. The resummed contribution, originating from charged scalars, reads

$$\Omega_{(a+)IJ}^{2\leftrightarrow 2, \text{direct}, \text{softH}} \simeq \frac{(g_1^2 + 3g_2^2)\mu_Q T}{4(4\pi)^3 k} \left(\frac{\pi^2 T^2}{k^2} - 1 \right) \times \theta(k - m_W) \left[\ln\left(\frac{k + \sqrt{k^2 - m_W^2}}{m_W}\right) - \frac{\sqrt{k^2 - m_W^2}}{k} \right]. \quad (6.8)$$

The result for the symmetric phase is recovered by setting $\mu_Q \rightarrow \mu_Y$ and $m_W \rightarrow m_\phi$. In fact, apart from the values of running couplings, eq. (6.8) represents the only difference of the symmetric and broken phase values of the direct $2 \leftrightarrow 2$ contribution.

When $\pi T \ll m_W$, the $2 \leftrightarrow 2$ contributions determined by using massless propagators need to be switched off. We have done this by multiplying $\Omega_{(a+)IJ}^{2\leftrightarrow 2, \text{direct}}$ by a phenomenological factor $\kappa(m_W)$, defined as

$$\kappa(m_W) \equiv \frac{3}{\pi^2 T^3} \int_0^\infty dp p^2 n_B(\sqrt{p^2 + m_W^2}) [1 + n_B(\sqrt{p^2 + m_W^2})]. \quad (6.9)$$

6.2 High temperatures: ultrarelativistic $1 + n \leftrightarrow 2 + n$ scatterings and decays

The treatment of direct $1 + n \leftrightarrow 2 + n$ scatterings requires LPM resummation, a procedure that was first worked out for right-handed neutrinos in ref. [32]. Some chemical potentials were included in ref. [18]. These results were resolved into helicity channels and generalized to include all chemical potentials relevant for the symmetric phase in ref. [20]. In the broken phase, the assignment of chemical potentials and masses needs to be reconsidered.

As discussed in ref. [15], the LPM contribution originates from four components of a wave function, describing different annihilation channels. We express this as

$$\Omega_{(a\tau)IJ}^{\text{LPM}, \text{direct}} = \text{Im} \left\{ \Psi_{(\tau)IJ}^{\text{LPM}(H)}(\mu_{\nu_{La}}, \mu_{\phi_0}) + \Psi_{(\tau)IJ}^{\text{LPM}(Z)}(\mu_{\nu_{La}}, \mu_{\phi_0}) + 2 \Psi_{(\tau)IJ}^{\text{LPM}(W)}(\mu_{e_{La}}, \mu_{\phi_+}) \right\}, \quad (6.10)$$

where the superscript $\alpha \in \{H, Z, W\}$ enumerates the components. According to table 1 and the definitions in eq. (3.7), the chemical potentials read $\mu_{\nu_{La}} = \mu_a - \mu_Z/2$, $\mu_{\phi_0} = \mu_Z/2$, $\mu_{e_{La}} = \mu_a - \mu_Q + \mu_Z(\frac{1}{2} - s^2)$, $\mu_{\phi_+} = \mu_Q - \mu_Z(\frac{1}{2} - s^2)$. Because of issues discussed above eq. (6.8), we impose eq. (3.6), omitting contributions from μ_Z . The resummed terms read

$$\begin{aligned} \text{Im } \Psi_{(\tau)IJ}^{\text{LPM}(\alpha)}(\mu_1, \mu_2) &= \frac{1}{16\pi} \int_{-\infty}^{\infty} d\omega_1 \int_{-\infty}^{\infty} d\omega_2 \delta(k - \omega_1 - \omega_2) [1 - n_{\text{F}}(\omega_1 - \mu_1) + n_{\text{B}}(\omega_2 - \mu_2)] \\ &\times \frac{1}{\omega_2} \lim_{\mathbf{y}_{\perp} \rightarrow \mathbf{0}} \left\{ \frac{M_I M_J \delta_{\tau,-}}{k^2} \text{Im} [g^{(\alpha)}(\mathbf{y}_{\perp})] + \frac{\delta_{\tau,+}}{\omega_1^2} \text{Im} [\nabla_{\perp} \cdot \mathbf{f}^{(\alpha)}(\mathbf{y}_{\perp})] \right\}. \end{aligned} \quad (6.11)$$

The s and p -wave functions $g^{(\alpha)}$ and $\mathbf{f}^{(\alpha)}$ satisfy the matrix equations

$$(\hat{H}_J - i0^+) g(\mathbf{y}_{\perp}) = \delta^{(2)}(\mathbf{y}_{\perp}), \quad (\hat{H}_J - i0^+) \mathbf{f}(\mathbf{y}_{\perp}) = -\nabla_{\perp} \delta^{(2)}(\mathbf{y}_{\perp}), \quad (6.12)$$

$$\hat{H}_J \equiv -\frac{M_J^2}{2k} + \frac{m_{\ell}^2 - \nabla_{\perp}^2}{2\omega_1} + \frac{\text{diag}(m_H^2, m_Z^2, m_W^2, m_W^2) - \nabla_{\perp}^2}{2\omega_2} - i\Gamma_{4 \times 4}(\mathbf{y}_{\perp}). \quad (6.13)$$

Here m_{ℓ} is from eq. (6.4), whereas the matrix $\Gamma_{4 \times 4}$ is given in eq. (3.20) of ref. [15].

6.3 Intermediate temperatures: Born $1 \rightarrow 2$ decays

For $\pi T \lesssim m_W$, the relevant direct processes are Born-level decays of Higgs, Z^0 and W^{\pm} bosons. Adopting our previous trick of analytically continuing into an advanced propagator and subsequently inverting the sign of the four-momentum, the result can be written in a form analogous to eqs. (5.1), (5.5) and (6.10),⁹

$$\begin{aligned} \rho_a^{\text{Born,direct}}(\mathcal{K}) &= \text{Im} \left\{ \Psi^{\text{Born}(H)}(-\mathcal{K}, \mu_{\nu_{La}}, \mu_{\phi_0}) + \Psi^{\text{Born}(Z)}(-\mathcal{K}, \mu_{\nu_{La}}, \mu_{\phi_0}) \right. \\ &\quad \left. + 2\Psi^{\text{Born}(W)}(-\mathcal{K}, \mu_{e_{La}}, \mu_{\phi_+}) \right\}. \end{aligned} \quad (6.15)$$

Here, denoting $\epsilon_1 \equiv |\mathbf{k} - \mathbf{p}|$, $\epsilon_2 \equiv \sqrt{p^2 + m_{\alpha}^2}$ and $\mu_3 \equiv \mu_1 + \mu_2$, the basic structure reads

$$\Psi^{\text{Born}(\alpha)}(\mathcal{K}, \mu_1, \mu_2) \equiv -\frac{1}{2} \not{\mathcal{J}}_P \frac{i(\tilde{K} - \tilde{P})}{[(\tilde{k}_n - \tilde{p}_n)^2 + \epsilon_1^2](\tilde{p}_n^2 + \epsilon_2^2)} \Big|_{\tilde{k}_n \rightarrow -i[k_0 - i0^+]}. \quad (6.16)$$

Carrying out the Matsubara sum, taking the imaginary part, and restricting to the kinematics $\mathcal{K}^2 < m^2$ relevant for low temperatures, we find

$$\text{Im } \Psi^{\text{Born}(\alpha)}(-\mathcal{K}, \dots) = \int_{\mathbf{p}} \frac{\pi \delta(k_0 + \epsilon_1 - \epsilon_2)}{8\epsilon_1 \epsilon_2} [\epsilon_1 \gamma^0 + (\mathbf{k} + \mathbf{p}) \cdot \boldsymbol{\gamma}] [n_{\text{F}}(\epsilon_1 + \mu_1) + n_{\text{B}}(\epsilon_2 - \mu_2)], \quad (6.17)$$

⁹The real part of Ψ^{Born} also plays a role, leading to a “dispersive” correction in eq. (2.5). In terms of the function \mathcal{E} in eq. (5.6), this amounts to the terms $\propto T^2$ in eqs. (2.6) and (2.7), with

$$\beta_{(a)}^{\pm} = -\frac{2k}{T^2} \left[\mathcal{E}(m_H, \mu_{\nu_{La}}, \mu_{\phi_0}) + \mathcal{E}(m_Z, \mu_{\nu_{La}}, \mu_{\phi_0}) + 2\mathcal{E}(m_W, \mu_{e_{La}}, \mu_{\phi_+}) \right]_{\mu^{\pm}}, \quad (6.14)$$

where μ^{\pm} indicates a symmetrization/antisymmetrization with respect to chemical potentials. Eq. (6.14) originates from a helicity-flipping process like the factors $\frac{1}{2}$ in eq. (4.8). Similarly to eq. (6.22), we can expand $\beta_{(a)}^+ = \beta^{(0)}$ and $\beta_{(a)}^- = \bar{\mu}_a \beta^{(a)} + \sum_i \bar{\mu}_i \beta^{(i)}$. For $m \ll k, \pi T$, these evaluate to $\beta_{(a)}^+ \approx 1/4$, $\beta_{(a)}^- \approx 0$.

where now $\epsilon_1 = |\mathbf{k} + \mathbf{p}|$. After performing the angular integral, the result can be decomposed as $\beta_{\mathcal{K}} \mathcal{K} + \beta_u \not{u}$, so that matrix elements can be taken according to eqs. (4.15) and (4.16). Thereby we obtain for $M \ll k$ expressions similar to eqs. (5.28) and (5.29), except that the roles of the helicity channels have swapped places:

$$\Omega_{(a-)IJ}^{\text{Born,direct}} = \sum_{\text{channels}} \frac{M_I M_J T^2}{32\pi k^3} \left[l_{2b} \left(k + \frac{m^2}{4k} - \mu_2 \right) - l_{2f} \left(\frac{m^2}{4k} + \mu_1 \right) \right], \quad (6.18)$$

$$\Omega_{(a+)IJ}^{\text{Born,direct}} = \sum_{\text{channels}} \frac{m^2 T}{32\pi k^2} \left[l_{1f} \left(\frac{m^2}{4k} + \mu_1 \right) - l_{1b} \left(k + \frac{m^2}{4k} - \mu_2 \right) \right]. \quad (6.19)$$

Here the channels have the masses and chemical potentials given in eq. (6.15), and polylogarithms are defined in eqs. (5.25)–(5.26). Given that $\pi T \lesssim m_W$ implies $v \gg T$, we make use of eq. (3.6) and set $\mu_Z \rightarrow 0$ in the chemical potentials. If $m^2 < \mathcal{K}^2$, we omit this contribution.

6.4 Summary: putting everything together

In sections 6.1–6.3 we have discussed the different direct contributions to the rate coefficients. Let us now specify how these are put together and then combined with the indirect ones.

The full direct contribution to the rate coefficients in the broken phase can be expressed as

$$\Omega_{(a\tau)IJ}^{\text{direct}} = \Omega_{(a\tau)IJ}^{2 \leftrightarrow 2, \text{direct}} + \mathcal{I} \left\{ \Omega_{(a\tau)IJ}^{\text{LPM,direct}}, \Omega_{(a\tau)IJ}^{\text{Born,direct}} \right\}. \quad (6.20)$$

Here the $2 \leftrightarrow 2$ part is from eqs. (6.3) and (6.9). The function \mathcal{I} represents an interpolation between the two different $1 + n \leftrightarrow 2 + n$ computations, cf. eqs. (6.10), (6.18) and (6.19), in analogy with the procedure discussed in ref. [15].¹⁰ The chemical potential dependence is expanded to linear order,

$$\Omega_{(a\tau)IJ}^{\text{direct}} \equiv Q_{(a\tau)IJ}^{\text{direct}} + \bar{\mu}_a R_{(a\tau)IJ}^{\text{direct}} + \sum_i \bar{\mu}_i S_{(a\tau)IJ}^{(i)\text{direct}} + \mathcal{O}(\bar{\mu}^2), \quad \bar{\mu}_i \in \{\bar{\mu}_Q, \bar{\mu}_Z, \Sigma_b \bar{\mu}_b, \bar{\mu}_B\}. \quad (6.21)$$

This defines the coefficients $Q_{(a\tau)}^{\text{direct}}$, $R_{(a\tau)}^{\text{direct}}$ and $S_{(a\tau)}^{(i)\text{direct}}$ that are subsequently summed together with the indirect contributions.

As far as the indirect contributions go (cf. sections 4 and 5), we invoke an expansion similar to eq. (6.21), but this time for the coefficients appearing in the active neutrino self-energy, cf. eq. (4.11):

$$b = b^{(0)} + \bar{\mu}_a b^{(a)} + \sum_i \bar{\mu}_i b^{(i)} + \mathcal{O}(\bar{\mu}^2), \quad (6.22)$$

$$\Gamma_u = \Gamma_{(-)}^{(0)} + \bar{\mu}_a \Gamma_{(-)}^{(a)} + \sum_i \bar{\mu}_i \Gamma_{(-)}^{(i)} + \mathcal{O}(\bar{\mu}^2), \quad (6.23)$$

$$\Gamma_u + 2k\Gamma_{\mathcal{K}} = \Gamma_{(+)}^{(0)} + \bar{\mu}_a \Gamma_{(+)}^{(a)} + \sum_i \bar{\mu}_i \Gamma_{(+)}^{(i)} + \mathcal{O}(\bar{\mu}^2). \quad (6.24)$$

¹⁰More precisely, the LPM contribution is overtaken by the Born contribution at the smallest k/T and T/GeV when the Born contribution is smaller than the LPM one. The reason is that in these regimes the practical determination of the LPM contribution, making use of ultrarelativistic kinematics, becomes unreliable and overestimates the correct result.

Here b is given by eqs. (5.4) and (5.6), whereas the other parts are obtained through an interpolation of the type discussed in ref. [15],¹¹ based on the ingredients in eqs. (5.27)–(5.29), (5.23)–(5.24), and (5.39)–(5.40), respectively:

$$\Gamma_{(\tau)}^{(0,a,i)} = \Gamma_{(\tau)}^{(0,a,i)\text{Born}} + \mathcal{I} \left\{ \Gamma_{(\tau)}^{(0,a,i)\text{HTL}}, \Gamma_{(\tau)}^{(0,a,i)\text{Fermi}} \right\}. \quad (6.25)$$

Here “Born” accounts for $1 \rightarrow 2$ decays, whereas “HTL” and “Fermi” are $2 \leftrightarrow 2$ processes.

With the ingredients in eqs. (6.22)–(6.24), $\Omega_{(a\tau)IJ}^{\text{indirect}}$ is obtained from eqs. (4.17) and (4.18), and we can construct the rate coefficients according to eq. (4.5):

$$Q_{(a\tau)IJ}^{\text{indirect}} \equiv \frac{1}{2} \left[\Omega_{(a\tau)IJ}^{\text{indirect}} \Big|_{\mu} + \Omega_{(a\tau)IJ}^{\text{indirect}} \Big|_{-\mu} \right], \quad (6.26)$$

$$\bar{\mu}_a R_{(a\tau)IJ}^{\text{indirect}} + \sum_i \bar{\mu}_i S_{(a\tau)IJ}^{(i)\text{indirect}} \equiv \frac{1}{2} \left[\Omega_{(a\tau)IJ}^{\text{indirect}} \Big|_{\mu} - \Omega_{(a\tau)IJ}^{\text{indirect}} \Big|_{-\mu} \right]. \quad (6.27)$$

Note that no Taylor expansion in μ is invoked here, given that eq. (4.17) may contain a resonance. Afterwards, the full Q , R , and $S^{(i)}$ are obtained according to eq. (2.11).

7 Approximate solution and overall parametric dependences

In order to gain insight on the behaviour of the equations specified in section 2, we first consider an approximate solution, similar to that followed in most of the literature. The idea is to assume that all components of the density matrix are in kinetic equilibrium, with $\rho^{\pm}(k_T) \equiv \hat{\rho}^{\pm}(x) n_{\text{F}}(k_T)$, $x = \ln(T_{\text{max}}/T)$. If we subsequently integrate both sides of eq. (2.5) over k_T , we end up with a coupled set of equations for the lepton asymmetries and the variables $\hat{\rho}^{\pm}$, parametrized by integrals of the rate coefficients, weighted by $n_{\text{F}}(k_T)$ or $n_{\text{F}}(k_T)[1 - n_{\text{F}}(k_T)]$. The latter integrals can be carried out once and for all. As inputs for this we employ the values of $Q, R, S, \beta, \kappa, \delta$ Taylor-expanded to linear order in chemical potentials.

It is appropriate to remark that, based on the analysis in ref. [26], it is not clear *a priori* whether a momentum-averaged solution can be accurate. First of all, the density matrices found in ref. [26] have the characteristic feature that they kinetically equilibrate very fast at small momenta, and remain close to their vanishing initial values at large momenta (a similar finding had been made in ref. [12]). Consequently, $\rho_{12}^{\pm}(k_T)/n_{\text{F}}(k_T)$ are peaked at around $k_T \sim 0.5T$ in figure 3 of ref. [26], rather than being constant. Second, the different momentum modes add up incoherently in the source terms for the lepton asymmetries, so that $Y_a - Y_B/3$ show much less oscillations than the momentum-averaged recipe suggests. In spite of these differences, we find that the momentum-averaged recipe performs reasonably well, with errors $\lesssim 50\%$ in many cases, even if differences of $\mathcal{O}(10)$ can also be found (cf. figures 2 and 3).

For the numerical solution itself, we remark that the system contains a “charge” that is almost conserved at high temperatures, sometimes referred to as the “fermion number”,

¹¹More precisely, the interpolation \mathcal{I} makes use of the Fermi contribution at $T \leq m_W/\pi$ and then freezes its value (in units of T). The HTL contribution overtakes the Fermi one, once it exceeds the frozen value. In the rare case that the rapidly growing Fermi contribution is still smaller than the HTL one at $T = m_W/\pi$, we continue to follow it until the two cross, and go over to the HTL one at higher temperatures.

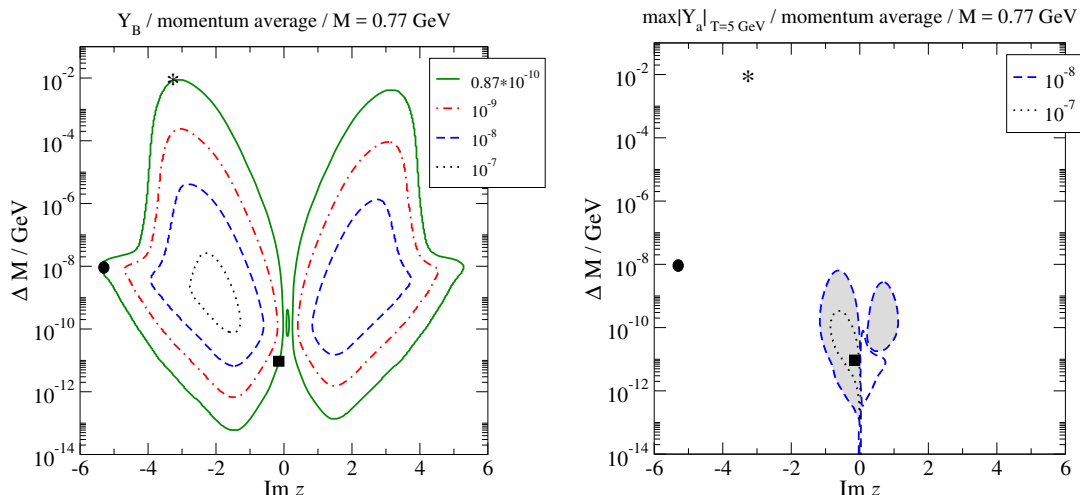


Figure 1. Left: contours of the total baryon yield Y_B in the plane of $\text{Im } z$ and ΔM , with other parameters fixed according to eqs. (7.1) and (7.2). The smallest value considered is $Y_B = 0.87(1) \times 10^{-10}$ [54]. Two benchmarks (filled circle and square) are studied in more detail in sections 8 and 9, respectively, whereas the point indicated with a star was studied in ref. [26]. Right: analogous results for the maximal lepton asymmetry $\max\{|Y_a|\}$, evaluated at $T = 5$ GeV. Within the shaded domains Y_a, Y_B are negative, within the unshaded positive.

and defined as the sum of the helicity asymmetries of right-handed neutrinos and the lepton asymmetries of the Standard Model particles. It is important to make sure that the integration algorithm respects this symmetry, as otherwise a non-zero fermion number generated inadvertently by numerical inaccuracy may have a large effect on late-time lepton asymmetries. On the other hand, physical fermion-number violating interactions do originate from the helicity-conserving coefficients $Q_{(a-)}, R_{(a-)}, S_{(a-)}$ [20], and they do become appreciable in the broken phase (cf. eq. (4.17)).

As far as the parameter values go, the neutrino Yukawa couplings are fixed as specified in ref. [26], by making use of active neutrino properties from ref. [51] as well as the Casas-Ibarra parametrization from ref. [52] (which can be generalized beyond the see-saw limit [53]). Choosing the right-handed neutrino mass to be $M \sim 1$ GeV, and noting that complex phases have effects of $\mathcal{O}(1)$, the results depend substantially on just two quantities, the mass splitting ΔM and the Casas-Ibarra parameter $\text{Im } z$. The goal now is to map the viable parameter space in this plane. The viability concerns both the baryon asymmetry, $Y_B = 0.87(1) \times 10^{-10}$ [54], and low-scale lepton asymmetries, which we monitor through $\max(\{|Y_a|\})$ evaluated at $T = 5$ GeV. Specifically we fix, following refs. [18, 26], the non-critical parameters to the benchmark point

$$M_{1(2)} = M \mp \frac{\Delta M}{2}, \quad M = 0.7732 \text{ GeV}, \quad \text{“inverted hierarchy”}, \quad (7.1)$$

$$\text{Re } z = 2.444, \quad \phi_1 = -1.857, \quad \delta = -2.199. \quad (7.2)$$

Results obtained from the numerical solution of this system are shown in figure 1. We observe that largest values of $|\text{Im } z|$ are obtained for $\Delta M/M \sim 10^{-8}$. Because of the

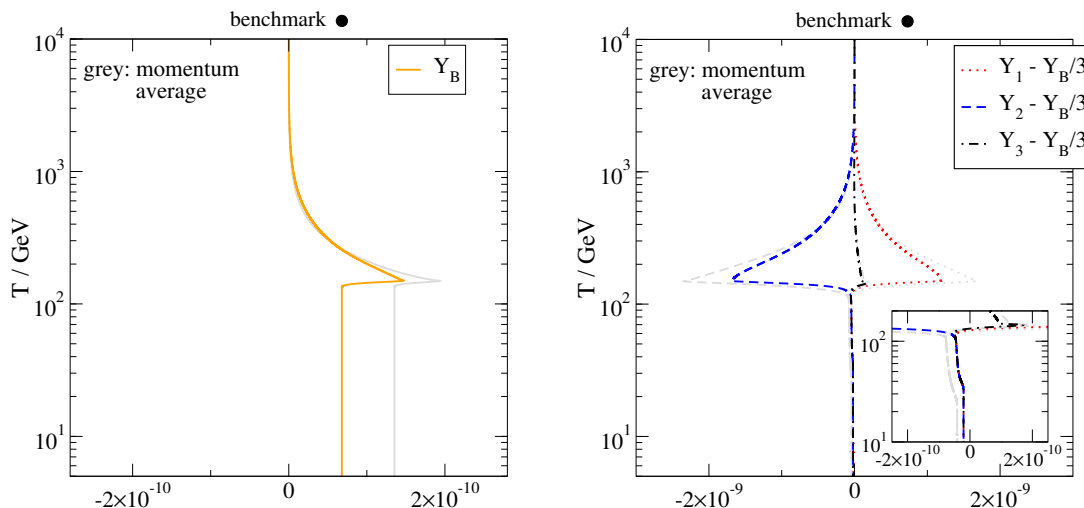


Figure 2. Left: baryon yield as a function of T/GeV for the benchmark point defined in section 8. Grey lines show the outcome if we resort to momentum averaging, like in figure 1. Momentum averaging overestimates Y_B by a factor ~ 2 . Right: the corresponding $Y_a - Y_B/3$.

largest neutrino Yukawa couplings and consequently the largest mixing angle with active neutrinos, this situation, studied in more detail in section 8, is ideal for the experimental search for right-handed neutrinos. On the other hand late-time lepton asymmetries can be considerably larger than the baryon asymmetry, but are obtained preferably with small values of $\text{Im } z$ and a more extreme degeneracy around $\Delta M/M \sim 10^{-11}$, so that leptogenesis takes place as late as possible. Such a situation is studied in more detail in section 9.

8 Accurate solution for large neutrino Yukawa couplings

Consider the filled circle from figure 1, corresponding to $\Delta M \equiv 10^{-8} \text{ GeV}$, $\text{Im } z \equiv -5.3$. The magnitudes of the neutrino Yukawa couplings are conveniently characterized by the square roots of the eigenvalues of the matrix $h h^\dagger$, which read 0.7×10^{-5} and 0.2×10^{-9} . Baryon asymmetry production peaks at temperatures just above the freeze-out one, $T \sim 130 \text{ GeV}$, so that little washout has time to take place while sphaleron transitions are active, even if the washout rate is large. Lepton asymmetries are, however, efficiently washed out once sphaleron processes have decoupled.

Let us mention that the numerical integration of the basic equations is somewhat demanding in this case. In the language of eqs. (2.9) and (2.10), the dimensionless rate coefficients are $\sum_a \text{Re}(h_{Ia} h_{Ja}^*) \widehat{Q}_{IJ}^+ \sim \sum_a \text{Im}(h_{Ia} h_{Ja}^*) \widehat{Q}_{IJ}^- \sim 10^3$ at $T \sim 160 \text{ GeV}$. Therefore a very fast equilibration process is taking place, and needs to be tracked with high accuracy, in a regime in which the rate coefficients vary rapidly [20]. We have written two independent routines for the integration, utilizing different languages and platforms, and verified that the results agree in general down to the 1...2% level (this applies also to wiggly features such as those observed in figure 3(right)).

The results from the numerical integration are shown in figure 2, where they are also compared with the momentum-averaged treatment of section 7. The basic feature of this

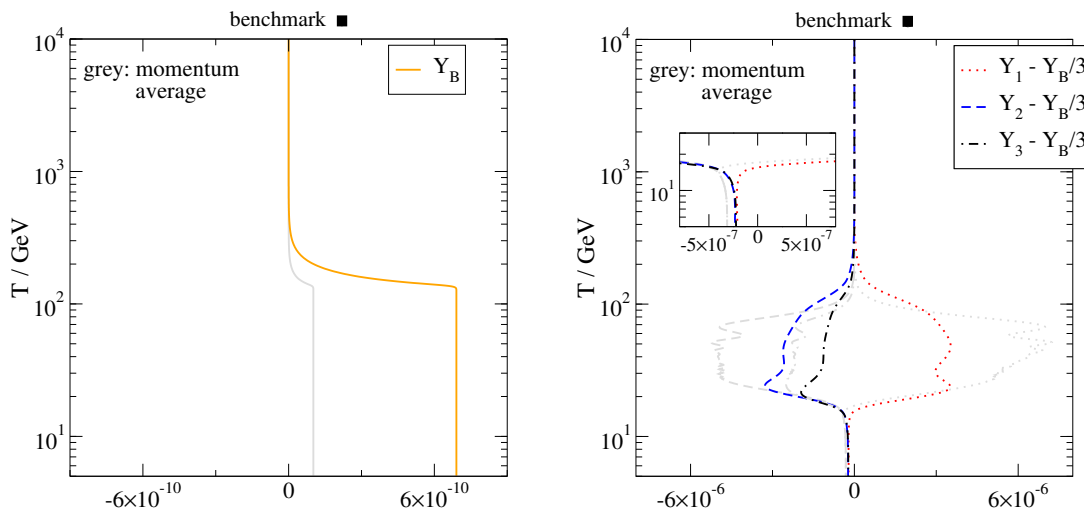


Figure 3. Left: baryon yield as a function of T/GeV for the benchmark point defined in section 9. Grey lines show the outcome if we resort to momentum averaging, like in figure 1. Right: the corresponding $Y_a - Y_B/3$. Momentum averaging underestimates Y_B by a factor ~ 7 but overestimates $Y_a - Y_B/3$.

benchmark is that baryon asymmetry freezes out close to when lepton asymmetries are maximal. After the freeze-out, lepton asymmetries are rapidly erased. These qualitative features are correctly reproduced by the momentum-averaged approximation, even if momentum averaging is seen to overestimate the correct result by a factor ~ 2 .

9 Accurate solution for small neutrino Yukawa couplings

Finally we consider the filled square from figure 1, corresponding to $\Delta M \equiv 10^{-11} \text{ GeV}$, $\text{Im } z \equiv -0.15$. In this case the square roots of the eigenvalues of the matrix $h h^\dagger$ are 4.1×10^{-8} and 3.0×10^{-8} . Most of the lepton asymmetry generation takes place after sphaleron processes have ceased to be active, i.e. at $T < 130 \text{ GeV}$.

Our numerical solution is shown in figure 3, where we have also compared with the momentum averaged treatment (grey lines). Baryon asymmetry is seen to freeze out already during an early stage of lepton asymmetry generation (left panel). In this particular case the momentum-averaged treatment is seen to underestimate the full result by a factor ~ 7 .

The most remarkable feature of our solution concerns the lepton asymmetries, which are shown in the right panel of figure 3. We observe that lepton asymmetries obtain a constant value below $T \sim 15 \text{ GeV}$, which is furthermore the same in all flavours. This is the case for low-temperature lepton asymmetries in general. The existence of such a state was proposed in ref. [19], whose eq. (61) can be derived from our eq. (9.3) by summing over both active and sterile flavours, integrating over momenta, and approximating susceptibilities.

The reason for this behaviour can be understood as follows. Consider a state in which the helicity-symmetric density matrix has equilibrated, $\rho^+ = \text{diag}(n_F, n_F)$, and the helicity-asymmetry is diagonal, $\rho^- = \text{diag}(\rho_{11}^-, \rho_{22}^-)$. In eq. (2.1), only the first and last term play a role. In eq. (2.5), only the third and fifth term play a role. At low temperatures, the

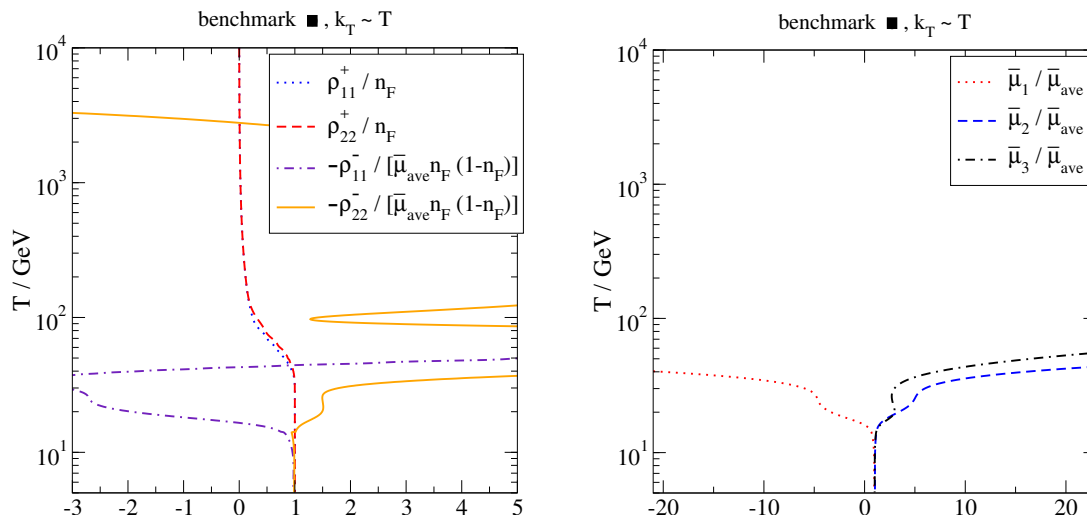


Figure 4. Left: an illustration of the equilibration of the diagonal components of the density matrix. For the normalization of the helicity asymmetries, we have defined $\bar{\mu}_{\text{ave}} \equiv \frac{1}{3} \sum_a \bar{\mu}_a$. The comoving momentum was chosen as $k_T \sim T$ at $T \sim 100$ GeV. Right: an illustration of the equilibration of the lepton asymmetries in the different flavours, expressed in terms of the lepton chemical potentials $\bar{\mu}_a$.

rate coefficients are dominated by the helicity-conserving components, so that $\hat{Q}_{(a)\{IJ\}}^+ \approx \frac{1}{2} \hat{Q}_{(a-)\{IJ\}}$, $\hat{Q}_{(a)\{IJ\}}^- \approx -\frac{1}{2} \hat{Q}_{(a-)\{IJ\}}$. Then the right-hand side of eq. (2.1) vanishes if¹²

$$\forall a: \quad \sum_I |h_{Ia}|^2 \bar{\mu}_a n_F (1 - n_F) \hat{Q}_{(a-)II} = -\sum_I |h_{Ia}|^2 \rho_{II}^- \hat{Q}_{(a-)II}, \quad (9.1)$$

whereas the right-hand side of eq. (2.5) vanishes if

$$\forall I: \quad \sum_a |h_{Ia}|^2 \bar{\mu}_a n_F (1 - n_F) \hat{Q}_{(a-)II} = -\sum_a |h_{Ia}|^2 \rho_{II}^- \hat{Q}_{(a-)II}. \quad (9.2)$$

Eqs. (9.1) and (9.2) can be satisfied simultaneously if

$$\forall a, I: \quad \bar{\mu}_a n_F (1 - n_F) = -\rho_{II}^-. \quad (9.3)$$

Alternatively, this can be expressed as $[n_F(k_T + \mu_a) - n_F(k_T - \mu_a)]/2 = [\rho_{(+)II} - \rho_{(-)II}]/2$. Eq. (9.3) implies that $\bar{\mu}_1 = \bar{\mu}_2 = \bar{\mu}_3$ and $\rho_{11}^- = \rho_{22}^-$.

Numerically, we find that the process towards the stationary state starts with the equilibration of ρ_{II}^+ . Later on this is followed by ρ_{II}^- and the lepton asymmetries, cf. figure 4. Afterwards the system remains in this state at least as long as $\pi T \gtrsim M$.

10 Conclusions

The purpose of this paper has been to carry out a precise study of two carefully tuned benchmark points of GeV-scale resonant leptogenesis. By precision we mean that the rate

¹²We stress that the rates themselves (helicity-conserving transitions between lepton asymmetries and helicity asymmetries) may remain appreciable, but the processes and inverse processes cancel against each other. Note that the total ‘‘fermion number’’ which is conserved in the helicity-flipping processes dominating at high temperatures, is not conserved here (unless the conversion rates $|h_{Ia}|^2 \hat{Q}_{(a-)II}$ vanish).

equations and most rate coefficients have been consistently determined to complete leading order in Standard Model couplings in the parametric regime $gT \ll k, \pi T$, where $g^2 = 4\pi\alpha_w$ and k is the right-handed neutrino co-moving momentum. Due to soft thermal effects, a resummation of the naive loop expansion was necessary for achieving this goal. Based on an analysis of lepton number susceptibilities (i.e. relations of chemical potentials and lepton asymmetries), which play a role in our master equations and for which higher-order corrections have been determined [38, 39], we expect the theoretical uncertainty to be on the $\sim 20\%$ level. There is one ingredient which was not fully resolved yet, namely the effect of the “chiral” chemical potential μ_z on the “direct” rate coefficients (cf. section 6) in the intermediate domain $v \sim T$, however we expect the numerical influence from here to be on the $\sim 1\%$ level. In addition there are non-perturbative uncertainties which are difficult to quantify at present, such as that the non-perturbative crossover is at $T \sim 160$ GeV whereas within our perturbative treatment the Higgs phenomenon sets in at $T \sim 150$ GeV.

As main ingredients of our analysis, we track both helicity states of right-handed neutrinos; consider both the symmetric and broken phase of the electroweak theory; allow for kinetic non-equilibrium; and include a large set of chemical potentials (including gauge field “tadpoles”). To contrast this with extensive recent parameter scans, kinetic non-equilibrium, helicity-conserving rates, a smoothly evolving sphaleron rate, hypercharge chemical potential, as well as all indirect contributions relevant for the broken phase, were omitted in ref. [18]. In ref. [27], kinetic non-equilibrium, the term $2k\Gamma_{\mathcal{K}}$ in the helicity-flipping indirect contribution (cf. eq. (4.18)), the running of Standard Model couplings, as well as the chemical potential dependences of the rates B^\pm, D^\pm (cf. eqs. (2.3), (2.4), (2.9), (2.10)) and of the mass corrections β, κ, δ , were omitted. On the μ -dependence of B^\pm, D^\pm we remark that even if such effects are formally of second order in deviations from equilibrium, it may be prudent to include them, given that ρ^\pm can deviate from equilibrium by $\mathcal{O}(1)$. Nevertheless, the results in our figure 1(left) agree semi-quantitatively with ref. [27].

The first of our benchmarks (cf. the filled circle in figure 1, and section 8) concentrated on large neutrino Yukawa couplings, whereas the second (cf. the filled square in figure 1, and section 9) focussed on small ones. On the methodological side, our main finding was that kinetic equilibrium, even if not justifiable theoretically, is often a reasonable approximation, even if differences of $\mathcal{O}(10)$ can be found (cf. figures 2 and 3). Assuming kinetic equilibrium is attractive in that it accelerates numerics and therefore permits for overall parameter scans.

Apart from kinetic non-equilibrium, another ingredient worth elaborating upon are the mass corrections, parametrized by $\beta^\pm, \kappa^\pm, \delta^\pm$ in eqs. (2.6) and (2.7). Like the rate coefficients, these can originate either from “indirect” processes (the terms $\propto v^2$) or from “direct” processes (the terms $\propto T^2$). We find that implementing precisely the mass corrections has a very important $\mathcal{O}(10)$ suppressive effect on late-time lepton asymmetries (less so on Y_B).

On the physics side, our main conclusion concerns the strong interplay between helicity and lepton asymmetries. Following an earlier hint [19], we have demonstrated that, after undergoing complicated dynamics, the system settles into a stationary state, or “fixed point”, at low temperatures (cf. figures 3, 4), in which there is flavour equilibrium both

in the active and sterile sectors (cf. eq. (9.3)). The temperature at which this happens lies typically in the range $T \sim 15 \dots 50$ GeV. The remnant lepton asymmetries can reach values $|Y_a| > 10^{-7} \gg |Y_B|$.

The significance of this finding originates from its connection to dark matter physics [11]. Thanks to flavour equilibrium, values $|Y_a| \gtrsim 10^{-5}$ would be large enough to permit for resonant keV-scale sterile neutrino dark matter production at $T \sim 0.1 \dots 1.0$ GeV [35], proceeding via the Shi-Fuller mechanism [55]. The existence of a stationary state suggests that the leptogenesis and dark matter processes nicely factorize from each other.

Our finding should motivate further work in this direction. Even if our results got to $|Y_a| > 10^{-7}$, they fell short of $|Y_a| \sim 10^{-5}$ for the parameters in eqs. (7.1), (7.2) (cf. figures 1 and 3). This justifies broader parameter scans, as well as further refinements of the theoretical framework. For instance, at very low temperatures $T \ll M/\pi$, an additional contribution to lepton asymmetries could originate from the non-equilibrium decays of the right-handed neutrinos [11, 13]. Considering such contributions leads to the need to include many new mass effects (such as from m_τ, m_c). Finally, it should be clarified whether the sterile neutrino helicity asymmetries that we observed (cf. eq. (9.3)) could constitute “reservoirs”, which might facilitate dark matter production, thereby rendering the Shi-Fuller mechanism viable even if Standard Model lepton asymmetries remain somewhat below $|Y_a| \sim 10^{-5}$. Unlike the existence of the stationary state itself, this seems to be a dynamical question, whose resolution depends on the values of the conversion rates $|h_{Ia}|^2 \widehat{Q}_{(a-)II}$ (cf. eqs. (9.1), (9.2)).

Acknowledgments

We thank S. Eijima, J. López-Pavón, M. Shaposhnikov and I. Timiryasov for helpful suggestions and discussions. This work was partly supported by the Swiss National Science Foundation (SNF) under grant 200020-168988.

A Relations between chemical potentials and asymmetries

We specify here the expressions resulting from eq. (3.17) for three cases: when restricting to eq. (3.5) relevant for the symmetric phase, or to eq. (3.6) relevant for the deep Higgs phase, or when we are in the intermediate regime $v \sim T$, when neither of these limits is viable. At high temperatures, when $v \ll T$ and $\mu_A = 0$, we find

$$\begin{aligned}
 & p(T, \mu) - p(T, 0) \Big|_{v \ll T} \\
 & \approx \sum_a \chi_F(m_{\nu_a}) \left[\frac{\mu_a^2}{2} - \frac{\mu_Y \mu_a}{2} + \frac{\mu_Y^2}{8} \right] + \sum_a \chi_F(m_{e_a}) \left[\mu_a^2 - \frac{3\mu_Y \mu_a}{2} + \frac{5\mu_Y^2}{8} \right] \\
 & + \sum_{i=u,c,t} \chi_F(m_i) \left[3\mu_q^2 + \frac{5\mu_Y \mu_q}{2} + \frac{17\mu_Y^2}{24} \right] + \sum_{i=d,s,b} \chi_F(m_i) \left[3\mu_q^2 - \frac{\mu_Y \mu_q}{2} + \frac{5\mu_Y^2}{24} \right] \\
 & + \left[\chi_B(m_\phi) + \chi_B(m_Z) + 2\chi_B(m_W) \right] \frac{\mu_Y^2}{16}. \tag{A.1}
 \end{aligned}$$

Here $\mu_q = \mu_B/3$, and masses have been retained as reminders of the origins of the contributions. For obtaining $n_a - n_B/3$ and $n_B + \sum_a n_a$, we follow the procedure described in section 4.3 of ref. [20], writing $\mu_a = \tilde{\mu}_a + \tilde{\mu}_{B+L}$ and $\mu_B = \tilde{\mu}_{B+L} - \sum_a \tilde{\mu}_a/3$ (sphaleron equilibrium corresponds to $\tilde{\mu}_{B+L} = 0$, see below). Extremizing with respect to μ_Y , and going to the massless limit, when χ_F and χ_B can be approximated according to eq. (3.18), we obtain

$$\mu_Y = \frac{8}{33} \left(\sum_a \tilde{\mu}_a + \frac{3\tilde{\mu}_{B+L}}{2} \right) + \mathcal{O}(g). \quad (\text{A.2})$$

Derivatives with respect to $\tilde{\mu}_a, \tilde{\mu}_{B+L}$ yield $n_a - n_B/3, n_B + \sum_a n_a$, respectively, and inverting these relations results in

$$\begin{pmatrix} \tilde{\mu}_1 \\ \tilde{\mu}_2 \\ \tilde{\mu}_3 \\ \tilde{\mu}_{B+L} \end{pmatrix} \stackrel{v \ll T}{=} \frac{1}{144T^2} \begin{pmatrix} 319 & 31 & 31 & -23 \\ 31 & 319 & 31 & -23 \\ 31 & 31 & 319 & -23 \\ -23 & -23 & -23 & 79 \end{pmatrix} \begin{pmatrix} n_1 - \frac{n_B}{3} \\ n_2 - \frac{n_B}{3} \\ n_3 - \frac{n_B}{3} \\ n_B + \sum_a n_a \end{pmatrix} + \mathcal{O}(g). \quad (\text{A.3})$$

Subsequently, $\mu_a = \tilde{\mu}_a + \tilde{\mu}_{B+L}$ and $\mu_B = \tilde{\mu}_{B+L} - \sum_a \tilde{\mu}_a/3$.

At low temperatures, when $v \gg T$, inserting μ_A and μ_Y from eq. (3.7) and omitting terms proportional to μ_Z leads to

$$\begin{aligned} p(T, \mu) - p(T, 0) \Big|_{v \gg T} & \approx \sum_a \chi_F(m_{\nu_a}) \left[\frac{\mu_a^2}{2} \right] + \sum_a \chi_F(m_{e_a}) \left[(\mu_a - \mu_Q)^2 \right] \\ & + \sum_{i=u,c,t} \chi_F(m_i) \left[\frac{(\mu_B + 2\mu_Q)^2}{3} \right] + \sum_{i=d,s,b} \chi_F(m_i) \left[\frac{(\mu_B - \mu_Q)^2}{3} \right] + \chi_B(m_W) \left[\frac{3\mu_Q^2}{2} \right]. \end{aligned} \quad (\text{A.4})$$

Considering for simplicity temperatures $T \gtrsim 50$ GeV so that susceptibilities can still be set to their massless values (cf. eq. (3.18)), extremization with respect to μ_Q yields

$$\mu_Q = \frac{4}{33} \left(\sum_a \tilde{\mu}_a + \frac{3\tilde{\mu}_{B+L}}{2} \right) + \mathcal{O}(g). \quad (\text{A.5})$$

The chemical potentials appearing here can be obtained from

$$\begin{pmatrix} \tilde{\mu}_1 \\ \tilde{\mu}_2 \\ \tilde{\mu}_3 \\ \tilde{\mu}_{B+L} \end{pmatrix} \stackrel{v \gg T \gtrsim 50 \text{ GeV}}{=} \frac{1}{204T^2} \begin{pmatrix} 407 & -1 & -1 & -39 \\ -1 & 407 & -1 & -39 \\ -1 & -1 & 407 & -39 \\ -39 & -39 & -39 & 111 \end{pmatrix} \begin{pmatrix} n_1 - \frac{n_B}{3} \\ n_2 - \frac{n_B}{3} \\ n_3 - \frac{n_B}{3} \\ n_B + \sum_a n_a \end{pmatrix} + \mathcal{O}(g). \quad (\text{A.6})$$

In the numerical solution, we include dependences on top, bottom, W^\pm , Z^0 and Higgs masses, whereby the equations become a bit more complicated.

In the intermediate regime $v \sim T$, we employ the full eq. (3.17) rather than (A.1) or (A.4), and both μ_A and μ_Y need to be extremized simultaneously [37], which leads to a smooth interpolation between eqs. (A.3) and (A.6). The price to pay is that when neither eq. (3.5) nor eq. (3.6) is satisfied, perturbation theory becomes complicated due to the

coupling of gauge and scalar modes (cf. section 3). To understand when we find ourselves in this situation, we note that the extremal value of μ_Z is given by

$$\mu_Z = \frac{\sum_a [2n_{\nu_a} - (1-4s^2)n_{e_a}] + (1-\frac{8s^2}{3})n_{u,c,t} - (1-\frac{4s^2}{3})n_{d,s,b} + (\frac{10}{3} - 4s^2)n_W}{v^2 + \chi_{\text{eff}}}, \quad (\text{A.7})$$

$$\begin{aligned} \chi_{\text{eff}} \equiv & \chi_F(0) \left(18 - 36s^2 + \frac{152s^4}{3} \right) + \chi_F(m_t) \left(3 - 8s^2 + \frac{32s^4}{3} \right) \\ & + \chi_F(m_b) \left(3 - 4s^2 + \frac{8s^4}{3} \right) + \chi_B(m_W)(9 - 20s^2 + 12s^4) + \frac{\chi_B(m_H) + \chi_B(m_Z)}{2}, \end{aligned} \quad (\text{A.8})$$

where $n_{u,c,t} \equiv \sum_{i=u,c,t} n_i$; $s^2 \equiv \sin^2(\tilde{\theta})$ with $\tilde{\theta}$ from eq. (B.4); and

$$n_u \equiv 2\chi_F(m_u)(\mu_B + 2\mu_Q), \quad n_d \equiv 2\chi_F(m_d)(\mu_B - \mu_Q), \quad (\text{A.9})$$

$$n_{\nu_a} \equiv \chi_F(m_{\nu_a})\mu_a, \quad n_{e_a} \equiv 2\chi_F(m_{e_a})(\mu_a - \mu_Q), \quad n_W \equiv 3\chi_B(m_W)\mu_Q. \quad (\text{A.10})$$

Eqs. (A.7)–(A.10) show that the assumption in eq. (3.6) is valid for $v^2 \gg \chi_{\text{eff}} \sim T^2$. For $v \ll T$, $s^2 \rightarrow 0$ and $m/T \rightarrow 0$, and eq. (A.7) then implies that $\mu_Z \rightarrow \mu_Q$.

Let us now turn to the implications of sphaleron equilibrium on this discussion. The sphaleron rate falls out of equilibrium in the intermediate domain $v \sim T$ [2], and in this regime neither eq. (A.3) nor (A.6) is accurate. As long as the sphaleron rate is fast, $\tilde{\mu}_{B+L}$ re-adjusts itself to zero on a time scale much shorter than we can resolve, so eqs. (A.3) and (A.6) show that the “would-be” equilibrium state has

$$Y_{B+L}^{\text{eq}}|_{v \ll T} \equiv \frac{23}{79} \sum_a \left(Y_a - \frac{Y_B}{3} \right), \quad Y_{B+L}^{\text{eq}}|_{v \gg T} \equiv \frac{13}{37} \sum_a \left(Y_a - \frac{Y_B}{3} \right). \quad (\text{A.11})$$

The corresponding rate equation, *viz.* $Y'_{B+L} = \sum_a F_a - \gamma(Y_{B+L} - Y_{B+L}^{\text{eq}})$, where we employ the notation of eq. (4.2) of ref. [26], contains the coefficient ($n_G \equiv 3$, Γ_{diff} is from ref. [29])

$$\gamma|_{v \ll T} = \frac{79n_G^2\Gamma_{\text{diff}}}{216c_s^2HT^3}, \quad \gamma|_{v \gg T} = \frac{37n_G^2\Gamma_{\text{diff}}}{102c_s^2HT^3}. \quad (\text{A.12})$$

The sphaleron rate is in equilibrium when $\gamma \gg 1$. According to eq. (A.11), a sudden switch from one limiting treatment to the other would insert a discontinuity in Y_{B+L} if $\gamma \gg 1$. In order to avoid this, we have derived the analogues of eqs. (A.3), (A.6), (A.11), (A.12) from an extremization of the full eq. (3.17) with respect to both μ_A and μ_Y . It is straightforward to verify that the resulting expressions interpolate continuously between the limiting values. Our numerical results make use of this continuous interpolation.

B Thermally modified weak mixing angles

A thermal medium modifies the weak (Weinberg) mixing angle between neutral gauge field components. Furthermore, the mixing angle becomes momentum-dependent [15]. In section 5.2 we addressed interaction rates for two different helicity states, denoted by Γ_u^{HTL} and $\Gamma_u^{\text{HTL}} + 2k\Gamma_K^{\text{HTL}}$, cf. eqs. (5.23) and (5.24), respectively. These turned out to be sensitive

to different momentum ranges of the gauge bosons exchanged in soft $2 \leftrightarrow 2$ scatterings: “static” momenta $p_0, p_{\parallel} \ll gT$ or “hard” momenta $gT \ll p_0, p_{\parallel} \ll \pi T$, where $\mathbf{p}_{\parallel} \parallel \mathbf{k}$ and \mathbf{k} is the neutrino momentum. Here we specify the mixing angles relevant for these cases, obtained from the HTL-resummed gauge propagators given in appendix B of ref. [15].

The HTL self-energies are parametrized by Debye masses,

$$m_{E1}^2 \equiv \left(\frac{n_S}{6} + \frac{5n_G}{9} \right) g_1^2 T^2, \quad m_{E2}^2 \equiv \left(\frac{2}{3} + \frac{n_S}{6} + \frac{n_G}{3} \right) g_2^2 T^2, \quad (\text{B.1})$$

where $n_S \equiv 1$ is the number of Higgs doublets and $n_G \equiv 3$ is the number of fermion generations. Like in eq. (5.10), two different HTL self-energies play a role. Here we need their limiting values:

$$\lim_{p_0 \rightarrow 0} \Pi_{Ei}(p_0, p_{\perp}, p_0) = m_{Ei}^2, \quad \lim_{p_0 \rightarrow \infty} \Pi_{Ei}(p_0, p_{\perp}, p_0) = 0, \quad (\text{B.2})$$

$$\lim_{p_0 \rightarrow 0} \Pi_{Ti}(p_0, p_{\perp}, p_0) = 0, \quad \lim_{p_0 \rightarrow \infty} \Pi_{Ti}(p_0, p_{\perp}, p_0) = \frac{m_{Ei}^2}{2}. \quad (\text{B.3})$$

As discussed around eq. (5.17), we have here set $p_{\parallel} = p_0$. The medium modifies the mixing angles in the limits where these self-energies differ from zero.

For $p_0 \rightarrow 0$, it is the “electric” components whose mixing is modified, cf. eq. (B.2). Given the standard vacuum angle $\sin(2\theta) \equiv 2g_1 g_2 / (g_1^2 + g_2^2)$, the relevant angle is

$$\sin(2\tilde{\theta}) \equiv \frac{\sin(2\theta) m_Z^2}{\sqrt{\sin^2(2\theta) m_Z^4 + [\cos(2\theta) m_Z^2 + m_{E2}^2 - m_{E1}^2]^2}}, \quad (\text{B.4})$$

and we also need the corresponding mass eigenvalues,

$$m_W^2 \equiv m_W^2 + m_{E2}^2, \quad m_Z^2 \equiv \tilde{m}_+^2, \quad m_Q^2 \equiv \tilde{m}_-^2, \quad (\text{B.5})$$

$$\tilde{m}_{\pm}^2 \equiv \frac{1}{2} \left\{ m_Z^2 + m_{E1}^2 + m_{E2}^2 \pm \sqrt{\sin^2(2\theta) m_Z^4 + [\cos(2\theta) m_Z^2 + m_{E2}^2 - m_{E1}^2]^2} \right\}. \quad (\text{B.6})$$

For $p_0 \rightarrow \infty$, the “transverse” polarizations are affected, cf. eq. (B.3). We denote

$$\sin(2\bar{\theta}) \equiv \frac{\sin(2\theta) m_Z^2}{\sqrt{\sin^2(2\theta) m_Z^4 + [\cos(2\theta) m_Z^2 + (m_{E2}^2 - m_{E1}^2)/2]^2}}, \quad (\text{B.7})$$

and the corresponding mass eigenvalues read

$$m_W^2 \equiv m_W^2 + \frac{m_{E2}^2}{2}, \quad m_Z^2 \equiv \bar{m}_+^2, \quad m_Q^2 \equiv \bar{m}_-^2, \quad (\text{B.8})$$

$$\bar{m}_{\pm}^2 \equiv \frac{1}{2} \left\{ m_Z^2 + \frac{m_{E1}^2 + m_{E2}^2}{2} \pm \sqrt{\sin^2(2\theta) m_Z^4 + \left[\cos(2\theta) m_Z^2 + \frac{m_{E2}^2 - m_{E1}^2}{2} \right]^2} \right\}. \quad (\text{B.9})$$

C Coefficients for the Fermi limit of the active neutrino width

We list here the values of the sums appearing in eq. (5.40) when the integrals of eqs. (5.41) and (5.42) are expanded to linear order in chemical potentials; coefficients are inserted

from table 2; and eq. (3.6) is made use of (we write the result in terms of $\bar{\mu}_B = N_c \bar{\mu}_q$ and make use of the symmetry of $\Xi_{(\tau)}^s$ in $\mu_\alpha \leftrightarrow \mu_\beta$):

$$\begin{aligned}
 \Gamma_{(\tau)}^{\text{Fermi}} &= \sum_{\text{channels}} \left\{ (c_{1\text{L}} - c_2 + c_{1\text{R}}) \left[2\Xi_{(\tau)}^t + \Xi_{(\tau)}^s \right]_{\mu_i=0} \right. & (C.1) \\
 &\quad + [(c_{1\text{L}} - c_2)(\mu_1 + \mu_3) + c_{1\text{R}}(\mu_1 + \mu_2)] \left[(\partial_{\mu_\alpha} + \partial_{\mu_\gamma}) \Xi_{(\tau)}^t + \partial_{\mu_\alpha} \Xi_{(\tau)}^s \right]_{\mu_i=0} \\
 &\quad \left. + [(c_{1\text{L}} - c_2)(\mu_2) + c_{1\text{R}}(\mu_3)] \left[2\partial_{\mu_\beta} \Xi_{(\tau)}^t + \partial_{\mu_\gamma} \Xi_{(\tau)}^s \right]_{\mu_i=0} \right\} + \mathcal{O}(\mu^2) \\
 &= \left[\frac{15}{2} - 2s^2 + 12s^4 + 2N_c \left(\frac{5}{4} - \frac{7s^2}{3} + \frac{22s^4}{9} + |V_{ud}|^2 + |V_{us}|^2 + |V_{cd}|^2 + |V_{cs}|^2 \right) \right] \\
 &\quad \times \left[\Xi_{(\tau)}^s + 2\Xi_{(\tau)}^t \right]_{\mu_i=0} \\
 &\quad + \bar{\mu}_a \left\{ \left(\frac{3}{2} - 4s^2 \right) \left[2\partial_{\mu_\beta} \Xi_{(\tau)}^t + \partial_{\mu_\gamma} \Xi_{(\tau)}^s \right]_{\mu_i=0} \right. \\
 &\quad \left. + 2 \left[3 + s^2 + 6s^4 + N_c \left(\frac{5}{4} - \frac{7s^2}{3} + \frac{22s^4}{9} + |V_{ud}|^2 + |V_{us}|^2 + |V_{cd}|^2 + |V_{cs}|^2 \right) \right] \right. \\
 &\quad \left. \times \left[(\partial_{\mu_\alpha} + \partial_{\mu_\gamma}) \Xi_{(\tau)}^t + \partial_{\mu_\alpha} \Xi_{(\tau)}^s \right]_{\mu_i=0} \right\} \\
 &\quad + \left\{ -\bar{\mu}_Q \left[\frac{11}{2} - 2s^2 + \frac{2N_c}{3} \left(-\frac{1}{4} + \frac{5s^2}{3} + |V_{ud}|^2 + |V_{us}|^2 + |V_{cd}|^2 + |V_{cs}|^2 \right) \right] \right. \\
 &\quad \left. + (\sum_b \bar{\mu}_b)(3 - 2s^2) + 2\bar{\mu}_B \left(\frac{5}{4} - \frac{7s^2}{3} + |V_{ud}|^2 + |V_{us}|^2 + |V_{cd}|^2 + |V_{cs}|^2 \right) \right\} \\
 &\quad \times \left[(\partial_{\mu_\alpha} - 2\partial_{\mu_\beta} + \partial_{\mu_\gamma}) \Xi_{(\tau)}^t + (\partial_{\mu_\alpha} - \partial_{\mu_\gamma}) \Xi_{(\tau)}^s \right]_{\mu_i=0} + \mathcal{O}(\mu^2). & (C.2)
 \end{aligned}$$

D Phase space integrals for direct $2 \leftrightarrow 2$ scatterings

We list here the phase space integrals appearing in eq. (6.2). The associated coefficients c_i and chemical potentials are listed in table 3. The five cases read

$$\begin{aligned}
 \Xi_{(+)}^{t1} &\equiv \frac{n_{\text{F}}^{-1}(k - \sum_i \mu_i)}{2k} \int d\Omega_{2 \leftrightarrow 2} n_{\text{B}}(p_1 - \mu_1) n_{\text{B}}(p_2 - \mu_2) [1 - n_{\text{F}}(p_3 + \mu_3)] \left(\frac{u}{t} \right) \\
 &= \frac{1}{(4\pi)^3 k^2} \int_0^k dp_+ \int_{-\infty}^0 dp_- [1 - n_{\text{F}}(p_0 - \mu_1 - \mu_3) + n_{\text{B}}(k - p_0 - \mu_2)] \\
 &\quad \times \left\{ \frac{(k - p_+)T}{p} [l_{1\text{f}}(\mu_3 - p_-) - l_{1\text{b}}(p_+ - \mu_1)] \right. \\
 &\quad \left. + \frac{(p_0 - 2k)T^2}{p^2} [l_{2\text{f}}(\mu_3 - p_-) - l_{2\text{b}}(p_+ - \mu_1)] \right\}, & (D.1) \\
 \Xi_{(+)}^{u1} &\equiv \frac{n_{\text{F}}^{-1}(k - \sum_i \mu_i)}{2k} \int d\Omega_{2 \leftrightarrow 2} n_{\text{B}}(p_1 - \mu_1) n_{\text{F}}(p_2 - \mu_2) [1 + n_{\text{B}}(p_3 + \mu_3)] \left(-\frac{s}{u} \right) \\
 &= \frac{1}{(4\pi)^3 k^2} \int_0^k dp_+ \int_{-\infty}^0 dp_- [1 - n_{\text{F}}(p_0 - \mu_2 - \mu_3) + n_{\text{B}}(k - p_0 - \mu_1)]
 \end{aligned}$$

$$\times \left\{ \frac{(k-p_-)T}{p} \left[l_{1f}(p_+ - \mu_2) - l_{1b}(\mu_3 - p_-) \right] + \frac{(p_0 - 2k)T^2}{p^2} \left[l_{2f}(p_+ - \mu_2) - l_{2b}(\mu_3 - p_-) \right] \right\}, \quad (\text{D.2})$$

$$\begin{aligned} \Xi_{(+)}^{s1} &\equiv \frac{n_{\text{F}}^{-1}(k - \Sigma_i \mu_i)}{2k} \int d\Omega_{2 \leftrightarrow 2} n_{\text{B}}(p_1 - \mu_1) n_{\text{F}}(p_2 - \mu_2) [1 + n_{\text{B}}(p_3 + \mu_3)] \left(-\frac{u}{s} \right) \\ &= \frac{1}{(4\pi)^3 k^2} \int_k^\infty dp_+ \int_0^k dp_- [n_{\text{F}}(p_0 - \mu_1 - \mu_2) + n_{\text{B}}(p_0 - k + \mu_3)] \\ &\quad \times \left\{ \frac{p}{2} + \frac{(k-p_-)T}{p} \left[l_{1f}(p_+ - \mu_2) - l_{1b}(p_- - \mu_1) \right] \right. \\ &\quad \left. + \frac{(k-p_+)T}{p} \left[l_{1f}(p_- - \mu_2) - l_{1b}(p_+ - \mu_1) \right] \right. \\ &\quad \left. + \frac{(p_0 - 2k)T^2}{p^2} \left[l_{2f}(p_+ - \mu_2) - l_{2f}(p_- - \mu_2) + l_{2b}(p_- - \mu_1) - l_{2b}(p_+ - \mu_1) \right] \right\}, \end{aligned} \quad (\text{D.3})$$

$$\begin{aligned} \Xi_{(+)}^{t0} &\equiv \frac{n_{\text{F}}^{-1}(k - \Sigma_i \mu_i)}{2k} \int d\Omega_{2 \leftrightarrow 2} n_{\text{F}}(p_1 - \mu_1) n_{\text{F}}(p_2 - \mu_2) [1 - n_{\text{F}}(p_3 + \mu_3)] \\ &= \frac{1}{(4\pi)^3 k^2} \int_0^k dp_+ \int_{-\infty}^0 dp_- [1 + n_{\text{B}}(p_0 - \mu_1 - \mu_3) - n_{\text{F}}(k - p_0 - \mu_2)] \\ &\quad \times \left\{ T \left[l_{1f}(\mu_3 - p_-) - l_{1f}(p_+ - \mu_1) \right] \right\}, \end{aligned} \quad (\text{D.4})$$

$$\begin{aligned} \Xi_{(+)}^{s0} &\equiv \frac{n_{\text{F}}^{-1}(k - \Sigma_i \mu_i)}{2k} \int d\Omega_{2 \leftrightarrow 2} n_{\text{F}}(p_1 - \mu_1) n_{\text{F}}(p_2 - \mu_2) [1 - n_{\text{F}}(p_3 + \mu_3)] \\ &= \frac{1}{(4\pi)^3 k^2} \int_k^\infty dp_+ \int_0^k dp_- [n_{\text{B}}(p_0 - \mu_1 - \mu_2) + n_{\text{F}}(p_0 - k + \mu_3)] \\ &\quad \times \left\{ p + T \left[l_{1f}(p_+ - \mu_1) - l_{1f}(p_- - \mu_1) + l_{1f}(p_+ - \mu_2) - l_{1f}(p_- - \mu_2) \right] \right\}, \end{aligned} \quad (\text{D.5})$$

where u, t, s are the Mandelstam variables, the polylogarithmic functions appearing on the right-hand sides have been defined in eqs. (5.25)–(5.26), $p_0 = p_+ + p_-$, $p = p_+ - p_-$, and

$$\int d\Omega_{2 \leftrightarrow 2} \equiv \int_{\mathbf{P}_1 \mathbf{P}_2 \mathbf{P}_3} \frac{\delta(\mathcal{P}_1 + \mathcal{P}_2 - \mathcal{P}_3 - \mathcal{K})}{8p_1 p_2 p_3}. \quad (\text{D.6})$$

The function δ is defined such that $\int_{\mathcal{P}} \delta(\mathcal{P}) = 1$. Even if not obvious from the right-hand sides of the expressions, the definitions and numerical values of $\Xi_{(+)}^{t0}$ and $\Xi_{(+)}^{s0}$ coincide.

Open Access. This article is distributed under the terms of the Creative Commons Attribution License ([CC-BY 4.0](https://creativecommons.org/licenses/by/4.0/)), which permits any use, distribution and reproduction in any medium, provided the original author(s) and source are credited.

References

- [1] M. Fukugita and T. Yanagida, *Baryogenesis without grand unification*, *Phys. Lett. B* **174** (1986) 45 [[INSPIRE](#)].

- [2] V.A. Kuzmin, V.A. Rubakov and M.E. Shaposhnikov, *On the anomalous electroweak baryon number nonconservation in the early universe*, *Phys. Lett.* **155B** (1985) 36 [INSPIRE].
- [3] D. Bödeker and M. Wörmann, *Non-relativistic leptogenesis*, *JCAP* **02** (2014) 016 [arXiv:1311.2593] [INSPIRE].
- [4] S. Biondini, N. Brambilla and A. Vairo, *CP asymmetry in heavy Majorana neutrino decays at finite temperature: the hierarchical case*, *JHEP* **09** (2016) 126 [arXiv:1608.01979] [INSPIRE].
- [5] D. Bödeker and M. Sangel, *Lepton asymmetry rate from quantum field theory: NLO in the hierarchical limit*, *JCAP* **06** (2017) 052 [arXiv:1702.02155] [INSPIRE].
- [6] J. Racker, *Unitarity and CP-violation in leptogenesis at NLO: general considerations and top Yukawa contributions*, arXiv:1811.00280 [INSPIRE].
- [7] E.J. Chun et al., *Probing leptogenesis*, *Int. J. Mod. Phys. A* **33** (2018) 1842005 [arXiv:1711.02865] [INSPIRE].
- [8] P. Hernández, M. Kekic and J. Lopez-Pavon, *N_{eff} in low-scale seesaw models versus the lightest neutrino mass*, *Phys. Rev. D* **90** (2014) 065033 [arXiv:1406.2961] [INSPIRE].
- [9] E.K. Akhmedov, V.A. Rubakov and A.Yu. Smirnov, *Baryogenesis via neutrino oscillations*, *Phys. Rev. Lett.* **81** (1998) 1359 [hep-ph/9803255] [INSPIRE].
- [10] T. Asaka and M. Shaposhnikov, *The ν MSM, dark matter and baryon asymmetry of the universe*, *Phys. Lett. B* **620** (2005) 17 [hep-ph/0505013] [INSPIRE].
- [11] M. Shaposhnikov, *The ν MSM, leptonic asymmetries and properties of singlet fermions*, *JHEP* **08** (2008) 008 [arXiv:0804.4542] [INSPIRE].
- [12] T. Asaka, S. Eijima and H. Ishida, *Kinetic equations for baryogenesis via sterile neutrino oscillation*, *JCAP* **02** (2012) 021 [arXiv:1112.5565] [INSPIRE].
- [13] L. Canetti, M. Drewes, T. Frossard and M. Shaposhnikov, *Dark Matter, baryogenesis and neutrino oscillations from right handed neutrinos*, *Phys. Rev. D* **87** (2013) 093006 [arXiv:1208.4607] [INSPIRE].
- [14] M. Shaposhnikov, *A possible symmetry of the ν MSM*, *Nucl. Phys. B* **763** (2007) 49 [hep-ph/0605047] [INSPIRE].
- [15] J. Ghiglieri and M. Laine, *Neutrino dynamics below the electroweak crossover*, *JCAP* **07** (2016) 015 [arXiv:1605.07720] [INSPIRE].
- [16] T. Hambye and D. Teresi, *Higgs doublet decay as the origin of the baryon asymmetry*, *Phys. Rev. Lett.* **117** (2016) 091801 [arXiv:1606.00017] [INSPIRE].
- [17] M. Drewes, B. Garbrecht, D. Gueter and J. Klarić, *Leptogenesis from oscillations of heavy neutrinos with large mixing angles*, *JHEP* **12** (2016) 150 [arXiv:1606.06690] [INSPIRE].
- [18] P. Hernández, M. Kekic, J. López-Pavón, J. Racker and J. Salvado, *Testable baryogenesis in seesaw models*, *JHEP* **08** (2016) 157 [arXiv:1606.06719] [INSPIRE].
- [19] S. Eijima and M. Shaposhnikov, *Fermion number violating effects in low scale leptogenesis*, *Phys. Lett. B* **771** (2017) 288 [arXiv:1703.06085] [INSPIRE].
- [20] J. Ghiglieri and M. Laine, *GeV-scale hot sterile neutrino oscillations: a derivation of evolution equations*, *JHEP* **05** (2017) 132 [arXiv:1703.06087] [INSPIRE].
- [21] T. Asaka, S. Eijima, H. Ishida, K. Minogawa and T. Yoshii, *Initial condition for baryogenesis via neutrino oscillation*, *Phys. Rev. D* **96** (2017) 083010 [arXiv:1704.02692] [INSPIRE].

- [22] T. Hambye and D. Teresi, *Baryogenesis from L -violating Higgs-doublet decay in the density-matrix formalism*, *Phys. Rev. D* **96** (2017) 015031 [[arXiv:1705.00016](#)] [[INSPIRE](#)].
- [23] A. Abada, G. Arcadi, V. Domcke and M. Lucente, *Neutrino masses, leptogenesis and dark matter from small lepton number violation?*, *JCAP* **12** (2017) 024 [[arXiv:1709.00415](#)] [[INSPIRE](#)].
- [24] S. Eijima, M. Shaposhnikov and I. Timiryasov, *Freeze-out of baryon number in low-scale leptogenesis*, *JCAP* **11** (2017) 030 [[arXiv:1709.07834](#)] [[INSPIRE](#)].
- [25] S. Antusch, E. Cazzato, M. Drewes, O. Fischer, B. Garbrecht, D. Gueter and J. Klarić, *Probing leptogenesis at future colliders*, *JHEP* **09** (2018) 124 [[arXiv:1710.03744](#)] [[INSPIRE](#)].
- [26] J. Ghiglieri and M. Laine, *GeV-scale hot sterile neutrino oscillations: a numerical solution*, *JHEP* **02** (2018) 078 [[arXiv:1711.08469](#)] [[INSPIRE](#)].
- [27] S. Eijima, M. Shaposhnikov and I. Timiryasov, *Parameter space of baryogenesis in the ν MSM*, [arXiv:1808.10833](#) [[INSPIRE](#)].
- [28] A. Abada, G. Arcadi, V. Domcke, M. Drewes, J. Klaric and M. Lucente, *Low-scale leptogenesis with three heavy neutrinos*, *JHEP* **01** (2019) 164 [[arXiv:1810.12463](#)] [[INSPIRE](#)].
- [29] M. D’Onofrio, K. Rummukainen and A. Tranberg, *Sphaleron rate in the Minimal Standard Model*, *Phys. Rev. Lett.* **113** (2014) 141602 [[arXiv:1404.3565](#)] [[INSPIRE](#)].
- [30] M. Laine and M. Meyer, *Standard Model thermodynamics across the electroweak crossover*, *JCAP* **07** (2015) 035 [[arXiv:1503.04935](#)] [[INSPIRE](#)].
- [31] M. D’Onofrio and K. Rummukainen, *Standard model cross-over on the lattice*, *Phys. Rev. D* **93** (2016) 025003 [[arXiv:1508.07161](#)] [[INSPIRE](#)].
- [32] A. Anisimov, D. Besak and D. Bödeker, *Thermal production of relativistic Majorana neutrinos: strong enhancement by multiple soft scattering*, *JCAP* **03** (2011) 042 [[arXiv:1012.3784](#)] [[INSPIRE](#)].
- [33] D. Besak and D. Bödeker, *Thermal production of ultrarelativistic right-handed neutrinos: Complete leading-order results*, *JCAP* **03** (2012) 029 [[arXiv:1202.1288](#)] [[INSPIRE](#)].
- [34] I. Ghisoiu and M. Laine, *Right-handed neutrino production rate at $T > 160$ GeV*, *JCAP* **12** (2014) 032 [[arXiv:1411.1765](#)] [[INSPIRE](#)].
- [35] J. Ghiglieri and M. Laine, *Improved determination of sterile neutrino dark matter spectrum*, *JHEP* **11** (2015) 171 [[arXiv:1506.06752](#)] [[INSPIRE](#)].
- [36] D. Bödeker, M. Sangel and M. Wörmann, *Equilibration, particle production and self-energy*, *Phys. Rev. D* **93** (2016) 045028 [[arXiv:1510.06742](#)] [[INSPIRE](#)].
- [37] S.Yu. Khlebnikov and M.E. Shaposhnikov, *Melting of the Higgs vacuum: conserved numbers at high temperature*, *Phys. Lett. B* **387** (1996) 817 [[hep-ph/9607386](#)] [[INSPIRE](#)].
- [38] D. Bödeker and M. Laine, *Kubo relations and radiative corrections for lepton number washout*, *JCAP* **05** (2014) 041 [[arXiv:1403.2755](#)] [[INSPIRE](#)].
- [39] D. Bödeker and M. Sangel, *Order g^2 susceptibilities in the symmetric phase of the Standard Model*, *JCAP* **04** (2015) 040 [[arXiv:1501.03151](#)] [[INSPIRE](#)].
- [40] H.A. Weldon, *Effective fermion masses of order gT in high-temperature gauge theories with exact chiral invariance*, *Phys. Rev. D* **26** (1982) 2789 [[INSPIRE](#)].

- [41] L. Lello, D. Boyanovsky and R.D. Pisarski, *Production of heavy sterile neutrinos from vector boson decay at electroweak temperatures*, *Phys. Rev. D* **95** (2017) 043524 [[arXiv:1609.07647](#)] [[INSPIRE](#)].
- [42] P. Aurenche, F. Gelis and H. Zaraket, *A simple sum rule for the thermal gluon spectral function and applications*, *JHEP* **05** (2002) 043 [[hep-ph/0204146](#)] [[INSPIRE](#)].
- [43] S. Caron-Huot, *$O(g)$ plasma effects in jet quenching*, *Phys. Rev. D* **79** (2009) 065039 [[arXiv:0811.1603](#)] [[INSPIRE](#)].
- [44] J. Ghiglieri and D. Teaney, *Parton energy loss and momentum broadening at NLO in high temperature QCD plasmas*, *Int. J. Mod. Phys. E* **24** (2015) 1530013 [[arXiv:1502.03730](#)] [[INSPIRE](#)].
- [45] J. Ghiglieri, G.D. Moore and D. Teaney, *Jet-medium interactions at NLO in a weakly-coupled quark-gluon plasma*, *JHEP* **03** (2016) 095 [[arXiv:1509.07773](#)] [[INSPIRE](#)].
- [46] R.D. Pisarski, *Scattering amplitudes in hot gauge theories*, *Phys. Rev. Lett.* **63** (1989) 1129 [[INSPIRE](#)].
- [47] J. Frenkel and J.C. Taylor, *High temperature limit of thermal QCD*, *Nucl. Phys. B* **334** (1990) 199 [[INSPIRE](#)].
- [48] E. Braaten and R.D. Pisarski, *Soft amplitudes in hot gauge theories: a general analysis*, *Nucl. Phys. B* **337** (1990) 569 [[INSPIRE](#)].
- [49] J.C. Taylor and S.M.H. Wong, *The effective action of hard thermal loops in QCD*, *Nucl. Phys. B* **346** (1990) 115 [[INSPIRE](#)].
- [50] D. Nötzold and G. Raffelt, *Neutrino dispersion at finite temperature and density*, *Nucl. Phys. B* **307** (1988) 924 [[INSPIRE](#)].
- [51] M.C. Gonzalez-Garcia, M. Maltoni and T. Schwetz, *Updated fit to three neutrino mixing: status of leptonic CP-violation*, *JHEP* **11** (2014) 052 [[arXiv:1409.5439](#)] [[INSPIRE](#)].
- [52] J.A. Casas and A. Ibarra, *Oscillating neutrinos and $\mu \rightarrow e, \gamma$* , *Nucl. Phys. B* **618** (2001) 171 [[hep-ph/0103065](#)] [[INSPIRE](#)].
- [53] A. Donini, P. Hernández, J. López-Pavón, M. Maltoni and T. Schwetz, *The minimal 3 + 2 neutrino model versus oscillation anomalies*, *JHEP* **07** (2012) 161 [[arXiv:1205.5230](#)] [[INSPIRE](#)].
- [54] PLANCK collaboration, *Planck 2015 results. XIII. Cosmological parameters*, *Astron. Astrophys.* **594** (2016) A13 [[arXiv:1502.01589](#)] [[INSPIRE](#)].
- [55] X.-D. Shi and G.M. Fuller, *A new dark matter candidate: nonthermal sterile neutrinos*, *Phys. Rev. Lett.* **82** (1999) 2832 [[astro-ph/9810076](#)] [[INSPIRE](#)].