

1985

## Industrial Resources - Fulton County - Hickman

Kentucky Library Research Collections  
Western Kentucky University, [spcol@wku.edu](mailto:spcol@wku.edu)

Follow this and additional works at: [https://digitalcommons.wku.edu/fulton\\_cty](https://digitalcommons.wku.edu/fulton_cty)

 Part of the [Business Administration, Management, and Operations Commons](#), [Growth and Development Commons](#), and the [Infrastructure Commons](#)

---

### Recommended Citation

Kentucky Library Research Collections, "Industrial Resources - Fulton County - Hickman" (1985). *Fulton County*. Paper 9.  
[https://digitalcommons.wku.edu/fulton\\_cty/9](https://digitalcommons.wku.edu/fulton_cty/9)

This Report is brought to you for free and open access by TopSCHOLAR®. It has been accepted for inclusion in Fulton County by an authorized administrator of TopSCHOLAR®. For more information, please contact [topscholar@wku.edu](mailto:topscholar@wku.edu).

FULTON COUNTY

RESOURCES  
FOR  
ECONOMIC  
DEVELOPMENT

**HICKMAN**

**KENTUCKY**  
The Business Environment is Right

# HICKMAN, KENTUCKY --- 1985 Industrial Sites

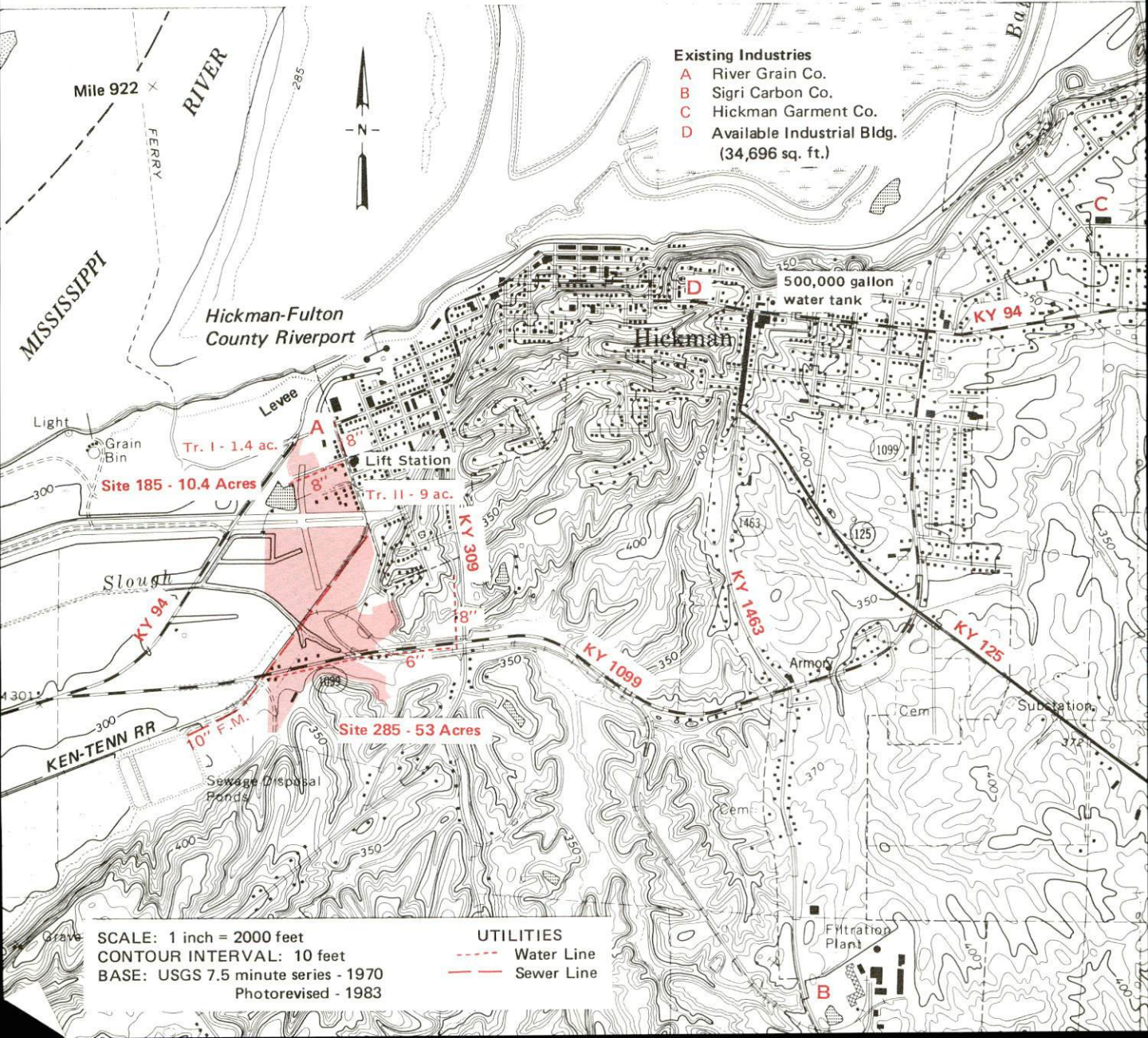
For more information contact the Kentucky Department of Economic Development, Industrial Development & Marketing Division, Capital Plaza Tower, Frankfort, Kentucky 40601 (502-564-7140).

## Site 185 - 10.4 Acres

**LOCATION:** Adjacent to northwestern city limits  
**ZONING:** Industrial  
**HIGHWAY ACCESS:** KY 94 adjacent to northern boundary of Tract I; Washington Street adjacent to eastern boundary of Tract II  
**RAILROAD:** Ken-Tenn Railroad adjacent to eastern boundary of Tract II  
**WATER:** Hickman Water and Sewer System  
 Size Line: 8-inch line along northern boundary of Tract II  
**SEWERAGE:** Hickman Water and Sewer System  
 Size Line: Lift station and 8-inch line approximately 75 feet west on east side of Washington Street  
**NATURAL GAS:** Hickman Natural Gas System  
 Size Line: 2-inch line along southern boundary of Tract I  
**ELECTRICITY:** Hickman Electric System  
**OWNERSHIP:** Hickman-Fulton County Riverport Authority  
**SCHOOL DISTRICT:** Fulton County

## Site 285 - 53 Acres

**LOCATION:** Adjacent to western city limits  
**ZONING:** Industrial  
**HIGHWAY ACCESS:** Site front on KY 1099  
**RAILROAD:** Ken-Tenn Railroad bisects the site  
**WATER:** Hickman Water and Sewer System  
 Size Line: 6-inch line along south side of KY 1099; 8-inch line approximately 750 feet east along west side of KY 309  
**SEWERAGE:** Hickman Water and Sewer System  
 Size Line: 10-inch force main on site along Ken-Tenn Railroad; Lift station approximately 800 feet north  
**NATURAL GAS:** Hickman Natural Gas System  
 Size Line: 2-inch line adjacent to northeast boundary across paved city street  
**ELECTRICITY:** Hickman-Fulton RECC  
**OPTIONED BY:** Hickman River City Development Corporation  
**SCHOOL DISTRICT:** Fulton County



RESOURCES FOR ECONOMIC DEVELOPMENT  
HICKMAN, KENTUCKY

Prepared by  
The Kentucky Department of Economic Development  
Division of Research and Planning  
in cooperation with  
The Purchase Area Development District

1985

Program manager - Andrew Dennis; research - Bill Morris; clerical - Bobbi Graves; graphics - Frank Ferrante, Tony Cecconi, Robert Owens; cartography - Site Evaluation Branch, Division of Industrial Development and Marketing. Cost of printing paid from state funds.

## TABLE OF CONTENTS

<u>Chapter</u>	<u>Page</u>
INDUSTRIAL SITES .....	i
HICKMAN, KENTUCKY - A RESOURCE PROFILE .....	1
THE LABOR MARKET AREA .....	3
Population .....	3
Labor Force Characteristics of Residents, 1983 .....	3
Selected Components of Nonagricultural Employment, by Place of Work, 1983 .....	4
Hickman Manufacturing Firms, Their Products and Employment .....	5
Labor Organizations in Manufacturing Firms .....	5
Industrial Services .....	6
Estimated Male Labor Supply .....	7
Estimated Female Labor Supply .....	7
Average Weekly Wages By Industry, by Place of Work, 1983 .....	8
Per Capita Personal Income .....	10
TRANSPORTATION .....	11
Rail .....	11
Highways .....	11
Truck Service .....	12
Air .....	13
Rental Services .....	14
Water .....	15
POWER AND FUEL .....	16
Electricity .....	16
Natural Gas .....	16
Other Fuels .....	17
WATER AND SEWERAGE .....	18
Public Water Supply .....	18
Raw Water .....	19
Sewerage .....	19
CLIMATE .....	20

<u>Chapter</u>	<u>Page</u>
LOCAL GOVERNMENT .....	21
City .....	21
County .....	21
Assessed Value of Property, 1984 .....	21
Property Taxes .....	22
Combined State and Local Rates Per \$100 Valuation, 1984 .....	22
Utilities Gross Receipts Tax for Schools .....	23
Planning and Zoning .....	23
Safety .....	23
Police .....	23
Fire .....	23
Rescue Service .....	23
Refuse Collection and Disposal .....	24
EDUCATION .....	25
Public Schools .....	25
Nonpublic Schools .....	25
Area Colleges and Universities .....	26
Vocational Schools .....	26
HEALTH .....	29
Local Medical Personnel .....	29
Hospitals .....	29
Other Medical Facilities .....	29
Ambulance Service .....	29
OTHER LOCAL FACILITIES .....	30
Communications .....	30
Library Services .....	30
Religious Institutions .....	31
Financial Institutions .....	31
Hotels and Motels .....	31
Clubs and Organizations .....	32
RECREATION .....	33
COMMUNITY IMPROVEMENTS .....	35

1985 EDITION  
GENERAL HIGHWAY MAP  
**FULTON COUNTY**  
KENTUCKY

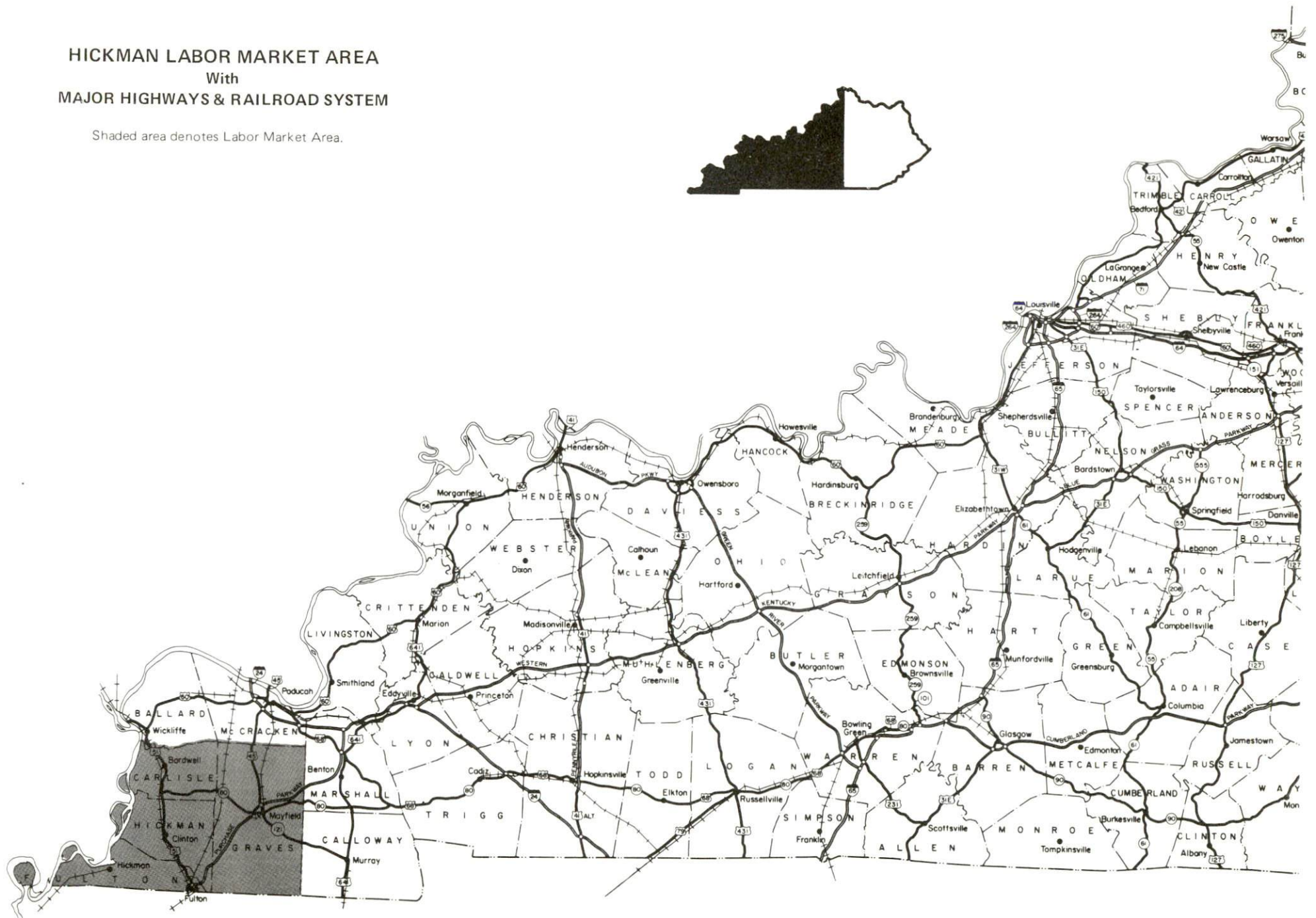
PREPARED BY THE  
KENTUCKY TRANSPORTATION CABINET  
DEPARTMENT OF HIGHWAYS  
DIVISION OF PLANNING  
IN COOPERATION WITH THE  
U.S. DEPARTMENT OF TRANSPORTATION  
FEDERAL HIGHWAY ADMINISTRATION





# HICKMAN LABOR MARKET AREA With MAJOR HIGHWAYS & RAILROAD SYSTEM

Shaded area denotes Labor Market Area.



## HICKMAN, KENTUCKY - A RESOURCE PROFILE

Hickman, the county seat of Fulton County, is situated on the Mississippi River in extreme western Kentucky's Jackson Purchase Region. Hickman was designated an enterprise zone in 1984, allowing eligible businesses to qualify for tax incentives, utility rate reductions, and certain other forms of federal, state and local government assistance. Hickman is located 143 miles north of Memphis, Tennessee; 177 miles northwest of Nashville, Tennessee; and 221 miles southeast of St. Louis, Missouri. Hickman's 1982 estimated population was 2,819 persons.

Fulton County, with a land area of 211 square miles, is bordered to the south by Tennessee, to the northwest by Missouri and the Mississippi River, and the northeast by Hickman County, Kentucky. The 1982 estimated population of Fulton County was 8,600.

### The Economic Framework

The total number of Fulton County residents employed in 1983 averaged 3,480, with nonagricultural jobs accounting for 3,040 workers. Manufacturing firms in the county reported 570 employees; wholesale and retail trade provided 780 jobs; 260 people were employed in service occupations; and state and local government accounted for 410 employees.

Per capita personal income in Fulton County in 1982 was \$8,898, just above the Kentucky average. Between 1978 and 1982, per capita income increased by 50 percent.

The Hickman labor market area includes Fulton County and the nearby counties of Carlisle, Graves, and Hickman. The total number of residents employed in the labor market area in 1983 averaged 20,660, with nonagricultural jobs accounting for 18,940 workers. Manufacturing firms in the area reported 3,720 employees; wholesale and retail trade provided 3,070 jobs; 1,650 people were employed in service occupations; and state and local government accounted for 1,830 employees.

### Resources for Growth

1. Labor Supply - There is a current estimated labor supply of 6,300 men and 6,550 women available for industrial jobs in the labor market area. In addition, from 1985 through 1989, 5,050 young men and 6,380 young women in the area will become 18 years of age and potentially available for industrial jobs.

2. Transportation - The TennKen Railroad Company, Inc., provides Hickman with weekly freight service. Kentucky Route 125, a "AAA"-rated (80,000-pound gross load limit) trucking highway, and Kentucky Route 94, a "AA"-rated (62,000-pound gross load limit) trucking highway, serve Hickman. The Purchase Parkway, a multilane toll road, is accessible 20 miles east of Hickman via Kentucky 125 and Kentucky 166 (also "AAA"-rated). Interstate highways accessible within 75 miles of Hickman include Interstate 24, Interstate 155, Interstate 55, and Interstate 57. Ferry service across the Mississippi River is available at Hickman. A total of 10 common carrier trucking companies serve Hickman, and 5 of these provide both interstate and intrastate service. The nearest scheduled commercial airline service is available at Memphis International Airport, 152 miles southwest of Hickman. The Everett Stewart Airport at Union City, Tennessee, 15 miles southeast of Hickman, has a paved 5,000-foot runway. The Fulton Municipal Airport, 18 miles east of Hickman, has a 2,700-foot runway. A public riverport facility is located at Hickman on the Mississippi River.

3. Power and Fuel - The Hickman Electric System, a municipal electric power system, serves Hickman and a small portion of Fulton County; the source of power is the Tennessee Valley Authority. Tennessee Valley Authority also serves the major portion of Fulton County through the Hickman-Fulton Counties Rural Electric Cooperative Corporation. The Hickman Natural Gas System, whose source of supply is Trunkline Gas Company, provides natural gas service to the city. There are 4 propane dealers and one fuel oil dealer within 20 miles of Hickman.

4. Education - The Fulton County Public School System provides primary and secondary education in Hickman, and enrolled over 1,100 students in the spring of 1985. A non-public primary and secondary school also operates in Hickman.

There are 5 institutions of higher learning within 85 miles of Hickman, including 3 state universities, a senior college, and a 2-year community college.

The West Kentucky State Vocational-Technical School at Paducah, 63 miles northeast of Hickman, offers training in 38 course areas. The Fulton County Area Vocational Education Center at Hickman offers training in 11 course areas.

## THE LABOR MARKET AREA

The Hickman Labor Market Area includes Fulton County and the Kentucky counties of Carlisle, Graves and Hickman.

POPULATION				
Area	1982*	1980	1970	Percent Nonwhite 1980
Hickman	2,819	2,894	3,048	25.2
Labor Market Area	52,900	54,572	52,740	N/A
Fulton County	8,600	8,971	10,183	16.9
Carlisle County	5,300	5,487	5,354	1.0
Graves County	33,000	34,049	30,939	4.7
Hickman County	6,000	6,065	6,264	10.5

\* Population estimates.

Note: The 1980 city counts of population by race are provisional.

Sources: U.S. Department of Commerce, Bureau of the Census, 1980 Census of Population and Housing, March 1981; 1980 Census of Population, Number of Inhabitants; Local Population Estimates, Series P-26, June 1984, September 1984.

### LABOR FORCE CHARACTERISTICS OF RESIDENTS, 1983

	Fulton County	Labor Market Area
Civilian Labor Force	3,915	24,028
Employment	3,479	20,663
Agricultural	438	1,725
Nonagricultural	3,041	18,938
Unemployment	436	3,365
Rate of Unemployment (%)	11.1	14.0

Source: Kentucky Cabinet for Human Resources, Kentucky Labor Force Estimates, Annual Averages, 1983.

SELECTED COMPONENTS OF NONAGRICULTURAL EMPLOYMENT,  
BY PLACE OF WORK, 1983

	<u>Fulton County</u>	<u>Labor Market Area</u>
All Industries (total)	2,380	11,870
Manufacturing	573	3,721
Wholesale & Retail Trade	781	3,072
Services	263	1,649
State/Local Government	412	1,828
Contract Construction	97	395

Note: Excludes domestic workers, railway workers, certain nonprofit corporations, majority of federal government workers, and self-employed workers.

Source: Kentucky Cabinet for Human Resources, Average Monthly Workers Covered by Kentucky Unemployment Insurance Law, 1983.

HICKMAN MANUFACTURING FIRMS,  
THEIR PRODUCTS AND EMPLOYMENT

<u>Firm</u> (Establishment date)	<u>Product</u>	<u>Employment</u>			<u>Labor Unions</u>
		<u>Total</u>	<u>Male</u>	<u>Female</u>	
The Hickman Courier, Inc. (1859)	Newspaper, offset printing	5	1	4	
Hickman Garment Company (1955)	Men's & boys' outerwear, ladies' outerwear, jackets lined and unlined	97	4	93	
Kentucky Nut Corporation (1982)	Pecan meats, shelled, cashews & pecans, salted	6	N/A	N/A	
Sigri Carbon Company (1967)	Graphite electrodes	216	210	6	Oil, Chemical & Atomic Workers*

\* See Labor Organizations below.

Sources: Kentucky Department of Economic Development, 1985 Kentucky Directory of Manufacturers; Division of Research and Planning.

LABOR ORGANIZATIONS IN MANUFACTURING FIRMS

Union

Oil, Chemical and Atomic  
Workers International  
Union, AFL-CIO

Representing workers at:

Sigri Carbon Company

INDUSTRIAL SERVICES

<u>Types of Services</u>	<u>Location</u>	<u>Mileage from Hickman</u>
Custom Plastics Producers	Fulton, Kentucky	20
	Kuttawa, Kentucky	82
Electric Motor Repair	Mayfield, Kentucky	43
	Paducah, Kentucky	63
Grinding, Precision & Tool	Paducah, Kentucky	63
Heat Treating Facilities	Paducah, Kentucky	63
Industrial Equipment & Supplies	Paducah, Kentucky	63
	Greenville, Kentucky	147
Industrial Gases	Murray, Kentucky	55
	Paducah, Kentucky	63
Industrial Waste Removal	Paducah, Kentucky	63
Machine Shops, Tool & Die	Clinton, Kentucky	18
	Mayfield, Kentucky	40
	Benton, Kentucky	60
	Paducah, Kentucky	63
Metal Finishers	Mayfield, Kentucky	40
	Paducah, Kentucky	63
Metal Service Centers	Greenville, Kentucky	147
	Russellville, Kentucky	150
Millwrights	Paducah, Kentucky	63
	Hopkinsville, Kentucky	112

Sources: Kentucky Department of Economic Development, Kentucky Directory of Selected Industrial Services, 1983; Division of Research and Planning.

ESTIMATED MALE LABOR SUPPLY  
HICKMAN LABOR MARKET AREA

Area	Current				Future
	Total Male	Unemployed	Under-employed	Not in Labor Force	Becoming 18 years of age 1985 thru 1989
Labor Market Area*	6,300				5,052
Fulton	424	278	146	0	387
Carlisle	379	238	141	0	219
Graves	3,045	1,441	550	1,054	1,267
Hickman	421	258	94	69	219
Lake (Tenn.)	384	N/A	N/A	N/A	318
Obion (Tenn.)	887	N/A	N/A	N/A	1,383
Weakley (Tenn.)	760	N/A	N/A	N/A	1,259

ESTIMATED FEMALE LABOR SUPPLY  
HICKMAN LABOR MARKET AREA

Area	Current				Future
	Total Female	Unemployed	Under-employed	Not in Labor Force	Becoming 18 years of age 1985 thru 1989
Labor Market Area*	6,553				6,380
Fulton	659	158	220	281	378
Carlisle	452	132	102	218	202
Graves	2,957	800	697	1,460	1,202
Hickman	345	60	113	172	223
Lake (Tenn.)	177	N/A	N/A	N/A	319
Obion (Tenn.)	938	N/A	N/A	N/A	3,007
Weakley (Tenn.)	1,025	N/A	N/A	N/A	1,049

\* Additional workers may be drawn from other nearby counties.

Note: Unemployed - persons unemployed and actively seeking work;  
Underemployed - persons employed but working only 14 to 26 weeks per year;  
Not in Labor Force - represents the number of persons who would enter the labor force if suitable employment were available (based on the assumption that persons in Kentucky would like to participate in the labor force in the same proportion that they do nationally).

Sources: Kentucky Cabinet for Human Resources, Kentucky Labor Supply Estimates by County, 1983. Kentucky Department of Economic Development, Future Labor Supply Becoming 18 Years of Age, 1985 thru 1989. Tennessee Department of Economic and Community Development, Tennessee Available Labor, 1983.



AVERAGE WEEKLY WAGES BY INDUSTRY,  
BY PLACE OF WORK, 1983

	<u>Fulton County</u>	<u>Carlisle County</u>
All Industries	\$232.66	\$185.36
Mining & Quarrying	*	0
Contract Construction	298.90	230.64
Manufacturing	283.97	153.26
Transportation, Communications & Public Utilities	322.08	*
Wholesale & Retail Trade	176.85	158.00
Finance, Insurance & Real Estate	225.02	240.31
Services	192.02	179.40
State/Local Government	255.17	222.82
Other	142.09	*
	<u>Graves County</u>	<u>Hickman County</u>
All Industries	\$299.26	\$220.53
Mining & Quarrying	321.98	0
Contract Construction	210.34	280.86
Manufacturing	435.53	203.92
Transportation, Communications & Public Utilities	378.39	293.20
Wholesale & Retail Trade	192.35	217.23
Finance, Insurance & Real Estate	262.38	216.39
Services	193.94	168.70
State/Local Government	288.97	252.79
Other	202.17	*

\* Not disclosed.

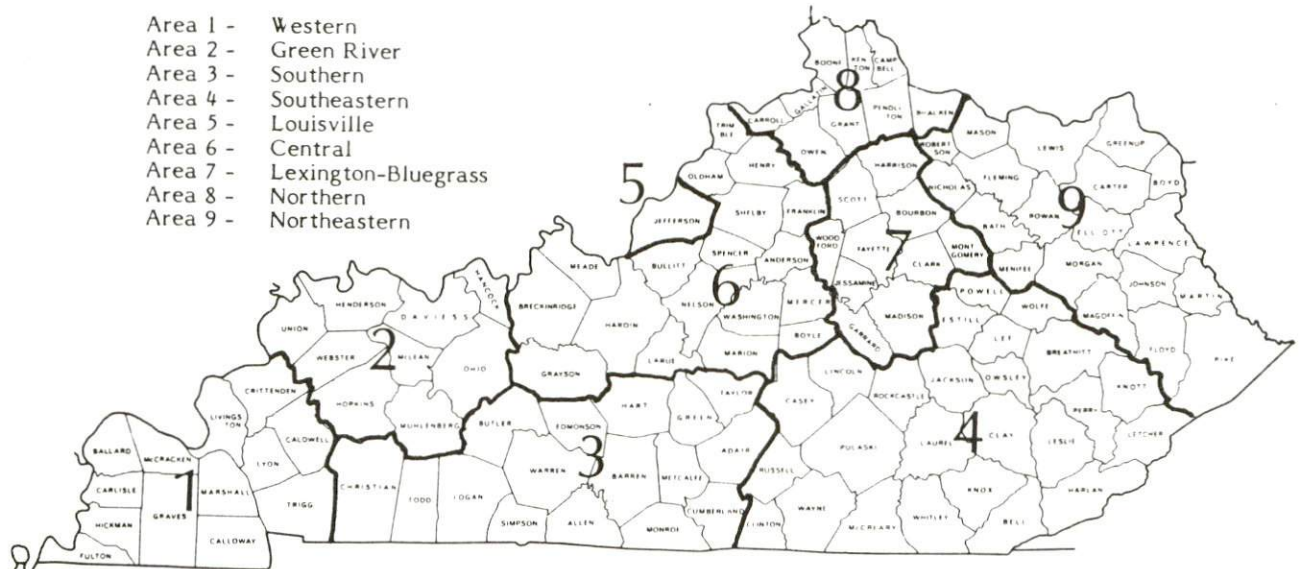
Note: Excludes domestic workers, railway workers, certain nonprofit corporations, majority of federal government workers, and self-employed workers.

Source: Kentucky Cabinet for Human Resources, Average Weekly Wages of Workers Covered by Kentucky Unemployment Insurance Law, 1983.

Up to date occupational wage rates of the existing industries are maintained by South Kentucky Industrial Development Association, Post Office Box 726, Hopkinsville, Kentucky 42240.

Occupational wage rates for specific industries are usually not available to most government agencies, and wage data furnished to state employment agencies by individual industrial employers are protected from disclosure by federal law. The most reliable up-to-date wage information can be obtained by direct contact with local employers.

Associated Industries of Kentucky, a voluntary organization of Kentucky businesses, regularly collects occupational wage rates and fringe benefits data from participating member firms. Data are compiled for over 127 clearly defined office, production, and service occupations. Tabulations are published for nine geographical areas of Kentucky, as shown on the map below. It should be noted that the data may be weighted by the preponderance of firms in the larger cities and may be somewhat higher than the rates paid in the smaller communities. Data from these tabulations are available, upon request, from the Kentucky Department of Economic Development, Frankfort, Kentucky 40601.



Associated Industries of Kentucky Area Wage Surveys

PER CAPITA PERSONAL INCOME

<u>Area</u>	<u>1978</u>	<u>1982</u>	<u>Percent Change</u>
Fulton County	\$ 5,915	\$ 8,898	50.4
Labor Market Area Range	\$5,380 - 6,385	\$6,925 - 8,898	N/A
Kentucky	6,389	8,893	39.2
U. S.	7,776	11,100	42.7

Sources: U.S. Department of Commerce, Bureau of Economic Analysis, Survey of Current Business, April 1983; Commerce News, April 29, 1984. Kentucky Economic Information System, July 1984.

## TRANSPORTATION

### Rail

Line serving **Hickman** - TennKen Railroad Company, Inc.

Services - Branch line; weekly turnaround freight serves Hickman; switching services; team track space for 20 cars; siding space for 3 cars. The nearest piggyback facilities are located in Paducah, Kentucky, 63 miles northeast of Hickman, and are operated by the Illinois Central Gulf Railroad.

For details on routing, schedules, rates, and services, contact:

TennKen Railroad Company, Inc.  
P. O. Box 172  
Dyersburg, Tennessee 38024  
(901) 286-2530

### Highways\*

Kentucky Route 125, a "AAA"-rated (80,000-pound gross load limit) trucking highway, serves Hickman, as does Kentucky Route 94, a "AA"-rated (62,000-pound gross load limit) trucking highway. Kentucky 125 and Kentucky 166, also "AAA"-rated, provide access to the Purchase Parkway, a multilane toll road, at Fulton, Kentucky, approximately 20 miles east of Hickman. The Purchase Parkway connects with Interstate 24, 68 miles northeast of Hickman. Interstate 155 is accessible approximately 50 miles south of Hickman, and connects with Interstate 55, 72 miles southwest of Hickman. Interstate 57 is accessible 60 miles north of Hickman.

Ferry service across the Mississippi River is available at Hickman. The U.S. Coast Guard-approved service has a 50-ton capacity with a loading space 80 feet in length and 24 feet in width.

---

\* Mileages are calculated via the highway system only. When ferry service is used, mileages to certain points west of Hickman may be substantially reduced.

## Truck Service

<u>Company</u>	<u>Home Office</u>
Bestway Express, Inc.* Henry Edwards Trucking Company** (R)	Nashville, Tennessee 37210 P. O. Box 97 Clinton, Kentucky 42031
Frame Motor Freight, Inc.* Jones Truck Lines, Inc.*	West Chester, Pennsylvania 19386 610 East Emma Avenue Springdale, Arizona 72764
Ligon Specialized Haulers, Inc.** (R)	Highway 85 Madisonville, Kentucky 40219
McLean Trucking Company**	P. O. Box 213 Winston-Salem, North Carolina 27154
Overnite Transportation Company*	1000 Semmes Avenue P. O. Box 1216 Richmond, Virginia 23209
Paschall Truck Lines, Inc.** (R)	Route 4 Murray, Kentucky 42071
Roadway Express, Inc.*	1077 Gorge Boulevard Akron, Ohio 44310
Smith's Transfer Corporation**	P. O. Box 1000 Staunton, Virginia 24401

\* Interstate and intrastate service.

\*\* Interstate service only.

(R) Serves the Hickman-Fulton County Riverport.

Source: American Motor Carrier Directory, Spring 1985; Purchase Area Development District.

### Other Freight Services

Emery

Federal Express

Purolator Courier

United Parcel Service

### Nearest Office or Shipping Center

Paducah, 63 miles distant  
Nashville, TN, 177 miles distant  
Paducah, 63 miles distant  
Clarksville, TN, 171 miles distant  
Paducah, 63 miles distant  
Paducah, 63 miles distant

HIGHWAY MILES AND TRUCK TRANSIT TIME IN DAYS FROM  
HICKMAN, KENTUCKY, TO SELECTED MARKET CENTERS

City	Highway Miles	Delivery Time TL	City	Highway Miles	Delivery Time TL
Atlanta, Ga.	419	1	Los Angeles, Ca.	1,959	3
Baltimore, Md.	835	2	Louisville, Ky.	267	1
Birmingham, Ala.	373	1	Nashville, Tenn.	177	1
Chicago, Ill.	416	1	New Orleans, La.	533	2
Cincinnati, Ohio	368	1	New York, N. Y.	1,015	6
Cleveland, Ohio	611	2	Pittsburgh, Pa.	637	2
Detroit, Mich.	627	2	St. Louis, Mo.	221	1
Knoxville, Tenn.	354	1			

Note: Mileage computations are via the best interstate or primary highways, not necessarily the most direct route of travel.

Sources: Rand McNally Road Atlas, 1979. Official Kentucky Mileage Map, 1980.  
Delivery time - Overnite Transportation Company; Memphis Junction Road;  
Bowling Green, Kentucky 42101.

**Air**

Local

Location: Fulton Municipal Airport  
2 miles northwest of Fulton;  
18 miles east of Hickman

Runways: 1 paved  
Length: 2,700 feet

Traffic Control: Wind sock

Lighting: Radio activated runway lights

The Everett Stewart Airport at Union City, Tennessee, 15 miles southeast of Hickman, has a 5,000-foot paved runway. The facility has beacon and runway lights, and offers a variety of services including repairs, flight instruction, instrument approach, and charter service.

(Cont'd)

Nearest Scheduled Commercial Airline Service\*

Location: Memphis International Airport  
9 miles southeast of downtown Memphis, Tennessee;  
152 miles southwest of Hickman

Runways: 3 paved  
Length: 8,400 feet, 9,319 feet, 8,926 feet

Traffic Control: Control tower

Lighting: Beacon; runway; approach lighting includes centerline lighting  
on two runways, MALS-RAIL, VASI

Services: American, Delta, Eastern, Piedmont, Republic, TWA, United,  
USAir, Air Atlanta, Air Midwest, Atlantic Southeast (ASA),  
Britt Airways, Flight Line, Royale; fuel-80 and 100 octane,  
jet-A; hangars, tie-downs; major repairs, major Avionics  
repairs; APU, charter, flight instruction, oxygen, plane  
rental, U.S. Customs; weather information; car rental,  
limousine, taxi; restaurant, snack bar; hotel

Air Freight Services: Air freight terminal

**Rental Services** - Automobile rentals are available at Union City, Tennessee, 15 miles southeast of Hickman. Complete automobile, truck, and trailer rental services are available at Mayfield, Kentucky, 42 miles northeast of Hickman.

\* Commuter air carrier service is provided by Allegheny Commuter and Britt Airways at Barkley Regional Airport, which is located 8 miles west of Paducah, Kentucky; 58 miles northeast of Hickman.

## Water

The Mississippi River bounds Hickman on the west. The Hickman-Fulton County Riverport Authority has a 25-acre general cargo facility on Hickman Harbor, a still, warm-water harbor on the Mississippi River.

The heart of the port is the docking facility, consisting of two 16-foot diameter mooring cells, one 20-foot diameter mooring and conveyor cell, one mooring "dolphin" structure, and a 30-foot diameter crane cell which has a pedestal-mounted crane rated at 125-ton lifting capacity. This crane, which has a 120-foot long boom, is able to lift 50 tons out of a barge and place a 20-ton load on a truck.

Linking the docking facility with the flood-protected material handling and processing segment of the port on the other side of the levee is an 86-foot-long bridge with paved roadway over the levee. At the land end of the bridge is an 18,400-square-foot heated warehouse, a 6,000-square-foot warehouse, and a paved staging area with truck height loading dock which has a rail spur at one end for rail transshipment. There is also 10,000 square feet of outside storage space.

The second main element of the port is 125-foot-long radial stacker which has the capability of stockpiling ten or more barge loads of material. In the barge unloading operation it is fed by a hopper on the 20-foot diameter river cell which will be loaded by a clamshell attached to the crane. The stacker is connected to the docking facility by a 1,205-foot-long conveyor system which has a 30-inch-wide belt with the capacity to transport material at a rate of 350 tons per hour outbound and 400 tons per hour inbound.



## POWER AND FUEL

### Electricity

Company serving **Hickman and a small portion of Fulton County** - Hickman Electric System

Source of power - Tennessee Valley Authority

Total generating capacity - 30,900,470 KW

For industrial rates contact:

South Kentucky Industrial Development  
Association, Inc.

P. O. Box 726

Hopkinsville, Kentucky 42240

(502) 885-5392

Company serving **most of Fulton County** - Hickman-Fulton Counties Rural Electric Cooperative Corporation

Source of power - Tennessee Valley Authority

Total generating capacity - 30,900,470 KW

For industrial rates contact:

South Kentucky Industrial Development  
Association, Inc.

P. O. Box 726

Hopkinsville, Kentucky 42240

(502) 885-5392

and/or

Hickman-Fulton Counties RECC

P. O. Box 190

Hickman, Kentucky 42050

(502) 236-2521

### Natural Gas

Company serving **Hickman** - Hickman Natural Gas System

Source of supply - Trunkline Gas Company

Size of transmission mains - 30 inches (supplier); 4 inches (distributor)

Distribution mains - 3/4, 1, 2, and 4 inches

Distribution pressure - 37 psi

Btu content - 1,018 per cubic foot

Specific gravity - 0.60

For rates and supplies contact:

Hickman Natural Gas System

202 Jackson Street

Hickman, Kentucky 42050

(502) 236-2535

## Other Fuels

### Propane (Within 20 miles)

Cal Gas  
603 West Highland Drive  
Fulton, Kentucky 42041

Southwest Kentucky LP Gas  
Highway 123 West  
Clinton, Kentucky 42031

Tri-State Gas & Appliance  
Company  
Jefferson Street  
Clinton, Kentucky 42031

Texgas  
610 Perkins Street  
Union City, Tennessee 38261

### Fuel oils

#### Distillate fuel oil - (Within 20 miles)

Fulton County Oil Company, Inc.  
1000 South 7th Street  
P. O. Box 66  
Hickman, Kentucky 42050

Residual fuel oil - Arrangements must be made with the refinery.

Low sulphur content coal - Available in Kentucky.

## WATER AND SEWERAGE

### Public Water Supply

Company serving **Hickman** - Hickman Water and Sewer System\*  
202 Jackson Street  
Hickman, Kentucky 42050  
(502) 236-2535

Source - 3 wells; pumping capacity - 1,500 gpm  
Treatment plant capacity - 2,250,000 gallons per day  
Average daily consumption - 1,000,000 gallons  
Peak daily consumption - 1,600,000 gallons  
Treatment processes - Aeration, rapid mix, coagulation, flocculation, sedimentation, filtration, chlorination, fluoridation  
Calcium content - 25.8 ppm  
Iron content - 0.07 ppm  
Hardness - 104.0 ppm as calcium carbonate  
Storage capacity - 1,400,000 gallons (including clear well)  
Size lines - 3/4-inch to 8-inch  
Water pressure - 54 to 90 psi

### MONTHLY WATER RATES

#### Inside City

First	2,000 gallons	\$6.17 (Minimum)
Next	8,000 gallons	1.68 per M gallons
Next	15,000 gallons	1.33 per M gallons
Next	25,000 gallons	1.15 per M gallons
Next	50,000 gallons	.96 per M gallons
Next	100,000 gallons	.71 per M gallons
All over	200,000 gallons	.62 per M gallons

#### Outside City

First	2,000 gallons	\$9.25 (Minimum)
Next	8,000 gallons	2.52 per M gallons
Next	15,000 gallons	1.99 per M gallons
Next	25,000 gallons	1.73 per M gallons
Next	50,000 gallons	1.44 per M gallons
Next	100,000 gallons	1.06 per M gallons
All over	200,000 gallons	.93 per M gallons

Tap-on charge:

3/4-inch and 1-inch meters - \$150  
2-inch meter - \$195

\* The Hickman Water and Sewer System recently completed an improvement project which added a new deep well, increased the raw water supply, and added a new 500,000-gallon storage facility.

## Raw Water

Surface water sources - Mississippi River, Obion Creek and Bayou de Chien  
Average discharge - Bayou de Chien near Clinton, Kentucky - 107 cfs (1939-1978, USGS); Obion Creek near Pryorsburg, Kentucky - 40.1 cfs (1951-1973, USGS)  
Expected ground water yield - 500 to 1,000 gpm over the entire county

## Sewerage

Company serving **Hickman** - Hickman Water and Sewer System  
202 Jackson Street  
Hickman, Kentucky 42050  
(502) 236-2535

Design capacity - 320,000 gallons per day\*  
Average daily flow - N/A  
Type of treatment - Primary and secondary  
Treatment processes - Lagoon system\*\*  
Treated effluent discharged into - Bayou du Chien and Mississippi River  
Size of sanitary mains - 6, 8, 10, and 12 inches  
Size of storm mains - 6 to 36 inches  
Monthly rates - Based on water usage

### Inside City

Residential - \$2.75 plus \$1.11 per M gallons of water used over 2,000 gallons  
Commercial - \$7.80 plus \$1.11 per M gallons of water used over 2,000 gallons

### Outside City

Rates for customers outside the city limits are 150 percent of the rates for customers inside the city limits.

Tap-on charge:

### Inside City

Tap size up to 4 inches - \$200 plus any additional cost for labor and materials  
6-inch tap - \$300 plus any additional cost for labor and materials  
8-inch tap - \$400 plus any additional cost for labor and materials

### Outside City

Tap size up to 4 inches - \$235 plus any additional cost for labor and materials  
6-inch tap - \$350 plus any additional cost for labor and materials  
8-inch tap - \$475 plus any additional cost for labor and materials

\* Kentucky Natural Resources and Environmental Protection Cabinet.  
\*\* Improvements are being made to the treatment system's lagoons. Chlorination and aeration facilities will be installed by late 1985.

## CLIMATE

### Fulton County

#### Temperature

Normal (30-year record)	59.10 degrees
Average annual 1984	58.90 degrees
Record highest, July 1980 (42-year record)	104.00 degrees
Record lowest, January 1982 (42-year record)	-7.00 degrees
Normal heating degree days (30-year record) (Heating degree day totals are the sums of negative departures of average daily temperatures from 65 degrees F.)	3,913

#### Precipitation

Normal (30-year record)	47.65 inches
Mean annual snowfall (29-year record)	10.20 inches
Total precipitation 1984	55.82 inches
Mean number days precipitation (.01 inch or more) (42-year record)	112.90
Mean number days thunderstorms (23-year record)	51.50

#### Prevailing Winds (through 1964)

Southwest

#### Relative Humidity (22-year record)

Midnight	N/A
6 a.m.	82 percent
Noon	59 percent
6 p.m.	N/A

Source: U.S. Department of Commerce, Environmental Science Services Administration, Climatological Data, 1984. Station of record: Cairo, Illinois.

## LOCAL GOVERNMENT

### City

Structure - Mayor - 4-year term; 4 commissioners - 2-year terms; city manager

Budget 1984-85 - General Fund	\$ 355,600
Water and Sewer Fund	579,362
City Gas System	1,200,207
City Electric System (1983-84)	134,039

Fees and licenses - Occupational license tax - one percent of gross salaries, wages, and commissions, and one percent of net profits of businesses, vehicle stickers - cars and trucks up to 3/4-ton: \$10 annually, 1-ton trucks: \$14 annually, 1½-ton trucks: \$18.75 annually, trucks 2 tons and heavier: \$26 plus \$10 for each ton over 2 tons

### County

Structure - County Judge/Executive - 4-year term; 4 magistrates - 4-year terms

Budget 1984-85 - General Fund \$235,400; Road Fund \$267,500

### Assessed Value of Property, 1984\*

<u>Classes of Property</u>	<u>Hickman</u>	<u>Fulton County</u>
Real Estate	\$16,132,400	\$91,553,341
Tangibles	9,582,506	32,599,513

\* Excludes Homestead Exemptions.

## Property Taxes

All property in Kentucky is assessed at 100 percent of fair cash value.

Land and buildings are taxed by the state and may be taxed by local jurisdictions. The 1984 state rate is \$0.22 per \$100 of assessed valuation.

Manufacturing machinery, raw materials inventories, pollution control equipment, and goods in the process of manufacture are not subject to local taxation. The state rate is \$0.15 per \$100.

Other tangible personal property owned by manufacturers (automobiles, trucks, finished goods, office furniture, office equipment) is taxed by the state at \$0.45 per \$100 and may be taxed by local jurisdictions.

Intangible personal property located in Kentucky (money in hand, shares of stock, notes, bonds, accounts receivable, and other credits) is taxed by the state at \$0.25 per \$100, and is not subject to local taxation.

Property stored in public warehouses in a transit status is not subject to local taxation. The state rate is only \$0.015 per \$100.

Private leaseholds in industrial facilities owned by cities or counties and financed by industrial revenue bonds are subject to a state tax of \$0.015 per \$100 of value (essentially the lessee's equity, adjusted for appreciation or depreciation). Local taxation is not permitted.

### Combined State and Local Rates Per \$100 Valuation, 1984\* (100% assessment)

	Site Inside City of <u>Hickman</u>	Site Inside Unincorporated <u>Fulton County</u>
1. Land and buildings	\$0.9030	\$0.6220
2. Mfg. machinery, raw materials, goods in process, pollution control equipment	0.1500	0.1500
3. Automobiles and trucks	1.1573	0.8763
4. Finished goods, office equipment, other tangibles	1.1373	0.8563
5. Intangibles (accounts receivable, notes, bonds, etc.)	0.2500	0.2500
6. Property stored in public warehouses in a transit status	0.0150	0.0150
7. Leaseholds in industrial revenue bond financed plants	0.0150	0.0150

\* Kentucky Department of Economic Development.

## Utilities Gross Receipts Tax for Schools

A 3 percent tax is levied on utilities receipts for schools in the Fulton County School District. Tax is paid by all consumers of utilities as an add-on to the utilities bills. Exempted are receipts from utilities services that are resold and the receipts from the sale of energy or energy producing fuels that exceed 3 percent of the cost of production in manufacturing, processing, mining or refining.

## Planning and Zoning

City agency - Hickman Planning and Zoning Commission  
Zoning enforced - Within the corporate limits of Hickman  
Subdivision regulations enforced - Within the corporate limits of Hickman  
Local codes enforced - Building and housing  
Mandatory state codes enforced - Kentucky Plumbing Code, National Electric Code, Kentucky Boiler Regulations and Standards, Kentucky Building Code (modeled after BOCA code)

## Safety

Police	Hickman	Fulton County
Total staff	8 full-time 1 part-time	3
Radio-patrol cars	3	3
<b>Fire</b>		
Insurance Services Office, Public Protection Classification	7	10*
Full-time staff	5	--
Volunteers	25	--

## Rescue Service

Hickman Rescue Squad:

Number of volunteers - 25

Equipment - 2 boats and motors, 3/4-ton van/truck, 3/4-ton jeep, bus for use as a mobile command post, army trailer with lights, dragging equipment, oxygen, two generators, radios, lights, basic rescue equipment

Personnel training - Advanced and standard first aid, cardiopulmonary resuscitation; most members are also volunteer firemen, and have received fire fighting training

\* Includes all unincorporated areas of Fulton County.



## Refuse Collection and Disposal

	Hickman	Fulton County
Type service	Private	Private
Fee charged:		
residential	\$4.75 monthly	By contract
commercial and industrial	From \$7.90 to \$84.40; based upon volume	By contract
Collection frequency:		
residential	Weekly	By contract
commercial and industrial	By contract	By contract
Disposal method	Landfill	Landfill

Fulton County provides a drop-off site at the county landfill.

## EDUCATION

### Public Schools

#### Fulton County

Total Enrollment (Spring 1985)	1,102
Elementary*	486
Middle School	286
High School	330
Pupil-Teacher Ratio (1983-84)	18-1
Percent High School Graduates to College (1983-84)	28.6
Expenditures Per Pupil (1983-84)	\$1,925.36
Bonded Indebtedness (June 30, 1984)	\$ 690,000

### Nonpublic Schools

#### Church of Jesus Christ School

Total Enrollment	51
Elementary*	34
High School	17
Pupil-Teacher Ratio	7-1

\* Includes kindergarten.

### Area Colleges and Universities

<u>Name</u>	<u>Location (Miles distant)</u>	<u>Enrollment (Fall, 1984)</u>	<u>Highest Degree Conferred</u>
University of Tennessee	Martin, Tennessee (33)	5,375	Masters
Murray State University	Murray, Kentucky (55)	7,392	Masters, Specialist*
Bethel College	McKenzie, Tennessee (56)	520	Baccalaureate
Paducah Community College	Paducah, Kentucky (63)	1,916	Associate
Southeast Missouri State University	Cape Girardeau, Missouri (84)	9,189	Academic & Professional

### Vocational Schools

Both the state vocational-technical schools and the area vocational education centers are operated by the Kentucky Department of Education. The state vocational-technical schools enroll persons full time who are at least 16 years of age and not in school. These students attend classes for six hours each day. The area vocational education centers are designed to accommodate high school students who are at least 15 years of age. These students attend vocational school for three hours each day. The state vocational-technical schools and the area education centers offer evening courses to enable working adults to upgrade current job skills.

(Cont'd)

\* Joint doctoral degree programs are offered in cooperation with the University of Kentucky, Lexington. The degrees are issued by the University of Kentucky.

	<u>Nearest State School</u>
Location	West Kentucky State Vocational-Technical School
Miles Distant	Paducah
Curriculum	63
	Business and Office
	Accounting/Jr. Management
	Clerical
	Computer Science
	Court and Conference Reporting
	Data Processing
	Medical Secretary
	Secretarial
	Word Processing
	Health Occupations
	Dental Assistant
	Dental Lab Technology Assistant
	Dental Office Manager
	Expanded Duties Dental Auxiliary
	Medical Assistant
	Practical Nursing
	Radiology
	Respiratory Therapy
	Surgical Technician
	Personal Services Occupations
	Barbering
	Cosmetology
	Consumer and Home Economics
	Dietary Department
	Industrial Education
	Air Conditioning and Refrigeration
	Auto Body Repair
	Auto Mechanics
	Carpentry
	Civil and Highway Technology
	Diesel Mechanics
	Electricity
	Electronics
	Graphic Arts
	Masonry
	Machine Shop
	Mechanical Shop
	Mechanical Drafting
	Welding
	Special Vocational Programs
	E.M.T. Training
	Paramedic Training
	First Aid and Safety
	Fireman Training
	Learning Resource Center

(Cont'd)

Nearest Area Education Center

Location	Fulton County Area Vocational Education Center
Curriculum	Hickman Business and Office Accounting Jr. Management Clerical Computer Services Secretarial Industrial Education Agriculture Auto Mechanics Carpentry Welding Special Vocational Programs Co-op Training Fireman Training First Aid and Safety

Arrangements can be made to provide training in the specific production skills required by an industrial plant. Instruction may be conducted either in the vocational school or in the industrial plant, depending upon the desired arrangement and the availability of special equipment.

## HEALTH

### Local Medical Personnel

Physicians - 1  
Dentists - 1

### Hospitals

<u>General Hospital</u>	<u>Location</u>	<u>Beds</u>
Baptist Memorial Hospital	Union City, Tennessee (15 miles southeast)	173
Fulton Hospital	Fulton, Kentucky (20 miles east)	41

### Baptist Memorial Hospital

General hospital facilities - Emergency room, operating room, recovery room, coronary care unit, intensive care unit, obstetrics, pediatrics, pharmacy, laboratory, radiology, nuclear medicine, ultrasound, EKG, EEG, physical therapy, respiratory therapy

Medical staff - 32 active-staff physicians, 8 courtesy-staff physicians, 55 registered nurses, 60 licensed practical nurses

### Fulton Hospital

General hospital facilities - Operating room, emergency room, X-ray, laboratory, pharmacy, respiratory therapy

Medical staff - 3 physicians, 6 registered nurses, 5 licensed practical nurses

### Other Medical Facilities

Fulton County Health Department - a public health facility  
Hickman Clinic

### Ambulance Service

Name - Fulton County Ambulance Service  
Staff - 2 full-time emergency medical technicians, 2 part-time emergency medical technicians  
Service - Western Fulton County  
Equipment - 2 fully equipped ambulances

## OTHER LOCAL FACILITIES

### Communications

Telephone -	South Central Bell Telephone Company
Telegraph -	Western Union Telegraph Company
Services -	Toll-Free number, 1-800-325-6000
Postal -	U.S. Post Office
Class -	Second
Mail received -	Once daily
Mail dispatched -	Once daily
Newspapers -	
Weekly and circulation -	Hickman Courier - 2,350
Radio -	
Stations received from -	Fulton, Paducah and Mayfield, Kentucky; McKenzie and Union City, Tennessee; Cairo, Illinois
Television -	
Airwave reception from -	Paducah, Kentucky; Cape Girardeau and St. Louis, Missouri; Carbondale, Illinois; Memphis, Tennessee
Cable service	
Number of cable channels -	22
Kentucky Educational Television -	Murray-Mayfield Transmitter, Channel 21

### Library Services

Public library - Hickman Public Library (a branch of the Fulton County Library Board)  
Size collection - 39,963 volumes\*  
Circulation, 1983-84 - 70,363 (libraries), 37,987 (bookmobile)  
Services - Bookmobile, magazines, movie projector, films, records, pictures, microfilm recorder-printer, reading program, story hour, book displays, meeting room, reference services, Interlibrary Loans, special programs for organizations upon request, services to shut-ins, copying services

\* Includes both the Fulton and Hickman libraries.

## Religious Institutions

Number of churches - 15  
 Denominations - Catholic  
 Christian  
 Church of Christ  
 Church of God  
 Church of Jesus Christ  
 Episcopal  
 Freewill Baptist  
 Holiness  
 Missionary Baptist  
 Southern Baptist  
 United Methodist

Nearest Synagogues -  
 Congregations - Temple Israel (reform) at Paducah, 63 miles northeast  
 Jewish Center (reform) at Union City, Tennessee, 15  
 miles southeast (September through May)

## Financial Institutions

<u>Banks</u>	<u>Assets</u>	<u>Deposits</u>	<u>Statement Date</u>
The Citizens Bank	\$21,919,928.94	\$18,995,046.73	12/31/84
<u>Savings and Loan Associations</u>	<u>Assets</u>	<u>Savings Accounts</u>	<u>Statement Date</u>
First Federal Savings & Loan Association of Paducah*	\$158,575,787.93	\$142,864,451.96	12/31/84
Home Federal Savings & Loan Association*	132,334,694.53	120,234,923.44	12/31/83

## Hotels and Motels

There are three motels with a total of 227 units in Union City, Tennessee, 15 miles southeast of Hickman, and six motels and hotels with a total of 176 units in Fulton, 20 miles east of Hickman.

\* Figures are totals for main office in Paducah and branch locations, including Hickman.



## Clubs and Organizations

American Legion  
American Legion Auxiliary  
Chamber of Commerce  
Debutantes  
Eastern Star  
4-H  
Future Business Leaders of  
America (FBLA)  
Future Farmers of America  
(FFA)  
Future Homemakers of America  
(FHA)  
Future Teachers of America  
(FTA)  
Hickman Area Ministerial  
Alliance  
Hickman Area Retail Merchants  
Association

Hickman Country Club  
Hickman Development Corporation  
Hickman-Fulton County Riverport  
Authority  
Hickman Historical Society  
Hickman Optimist  
Hickman River City Development  
Corporation  
Homemakers  
Jaycees  
Ky-Mo-Tenn CB Club  
Lions Club  
Masons  
Mothers Club  
Riding Club  
Rotary  
Senior Citizens Club  
VICA (vocational school)

## RECREATION

### Local

There are three parks located in Hickman. A park in east Hickman offers three tennis courts, two basketball courts, a large playground area, a miniature golf range, a walking/jogging trail, a picnic area, public shelters, concession areas, and restrooms. Sanger Field at Fulton County High School contains two baseball diamonds and a football field. A riverfront park and a neighborhood park have been proposed for development. The city also contains a historic courthouse, and numerous antebellum buildings.

The Hickman County Country Club offers private recreational facilities including a 9-hole golf course, a swimming pool, and a tennis court.

Hickman is located on the Mississippi River in a prime hunting and fishing area. Numerous Indian mounds and historical sites are nearby. A segment of Kentucky Highway 94 which runs through Hickman, has been designated as part of the Great River Road. This scenic route runs along the Mississippi River from Canada through ten states to the Gulf of Mexico, and offers the traveler a diverse Mississippi River experience that is both enjoyable and educational.

Annual events at Hickman include the Fourth of July "Spirit of America" celebration, featuring water festivities, and a Christmas festival, featuring a parade, Santa's arrival (by boat) and other attractions.

The International Banana Festival is held annually in Fulton, 20 miles east of Hickman.

### Area (Within 75 miles)

**Reelfoot Lake** and **the Kentucky Bend** are approximately 25 miles from Fulton. Reelfoot Lake is a 70-square mile lake in Kentucky and Tennessee known for excellent fishing. Kentucky maintains a 2,000-acre wildlife area near the lake for hunting. The Kentucky Bend is land totally separated from the state by the Mississippi River. Both lake and bend were created in 1811 and 1812 by the largest earthquakes ever recorded in North America.

A Confederate cannon, a network of earthen trenches, and a massive chain and anchor give the feeling of being transported back to the Civil War. All of this and more can be discovered at **Columbus-Belmont Battlefield State Park** at Columbus, 27 miles north of Hickman. Other attractions at the 156-acre park include a 38-site campground, a gift shop, a historical hiking trail, miniature golf, a picnic area, and a playground. A visit to the museum at the park, which is in a building that served as a Civil War infirmary, offers a display of Civil War relics and early Indian artifacts and an audiovisual slide program on the Battle of Belmont.

**Paducah** is located 63 miles northeast of Hickman. As Kentucky's seventh largest city, Paducah provides many recreational opportunities. Points of interest include the Alben W. Barkley Monument, Barkley Museum, and many other attractions.

Charm and serenity exemplify **Kenlake State Resort Park** which is located on Kentucky Lake, approximately 72 miles northeast of Hickman. The park offers hotel and cottage accommodations and an efficient camping site. Other facilities include a 9-hole golf course, pool and lake swimming, horseback riding, hiking trails, fishing, boating, picnicking, planned recreation, and one of the finest tennis complexes in the area.

**Kentucky Dam Village State Resort Park**, located approximately 72 miles northeast of Hickman near Gilbertsville, is one of the largest and most popular vacation resorts in Kentucky. A modern lodge with 72 rooms, six different cottage types, and a 225-site campground make up the accommodations. There is also a dining room overlooking Kentucky Lake, a coffee shop, a snack bar, two gift shops, a meeting room, an activities center, and a recreation room. Recreational activities to choose from include boating and fishing at the largest docking facility in the Kentucky parks system, golf at the 18-hole Village Green Course, fishing, hiking, horseback riding, picnicking, swimming at the lodge pool or off the sand beach, and tennis.

**The Land Between the Lakes**, located on a 170,000-acre wooded peninsula, is an outdoor recreational and conservational education center. Camping, swimming, fishing, boating, hiking, a buffalo herd on a 250-acre range, an Environmental Education Center for school study groups, an educational farm and a central station with films and displays are among the attractions. Kentucky Lake and Lake Barkley are among the top fishing and water sport recreation areas in the southeastern United States. The Land Between the Lakes area is approximately 75 miles northeast of Hickman.

## COMMUNITY IMPROVEMENTS

In 1984, the city of Hickman was designated as an enterprise zone. An enterprise zone is an economically distressed area where special incentives and regulatory relief are offered by state, local, and federal governments to encourage new or expanded business activity. Qualified businesses operating in the zone are offered tax incentives, relaxation or elimination of certain regulatory requirements, reduced utility rates, revenue bonds, and other forms of assistance.

The Hickman Water and Sewer System recently completed an improvement project at its water treatment and distribution facilities. A new well was added, increasing the raw water supply available to the plant, and an additional 500,000-gallon storage facility was constructed. Water mains are being extended east and west of the city.

An improvement project is under way at the sewerage system facilities in Hickman also. The treatment lagoons' discharge points are being relocated, and the lagoons themselves are being cleaned and upgraded.

Kentucky Commerce Cabinet  
Department of Economic Development  
Capital Plaza Tower  
Frankfort, Kentucky 40601  
(502) 564-7140