

1993

## Industrial Resources: Boyle County - Danville

Kentucky Library Research Collections  
Western Kentucky University, [spcol@wku.edu](mailto:spcol@wku.edu)

Follow this and additional works at: [https://digitalcommons.wku.edu/boyle\\_cty](https://digitalcommons.wku.edu/boyle_cty)

 Part of the [Business Administration, Management, and Operations Commons](#), [Growth and Development Commons](#), and the [Infrastructure Commons](#)

---

### Recommended Citation

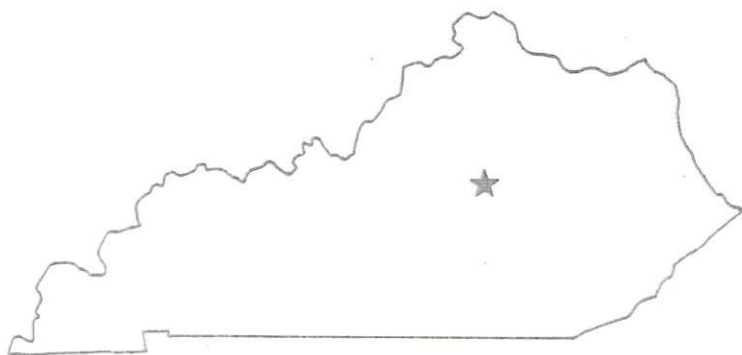
Kentucky Library Research Collections, "Industrial Resources: Boyle County - Danville" (1993). *Boyle County*. Paper 15.  
[https://digitalcommons.wku.edu/boyle\\_cty/15](https://digitalcommons.wku.edu/boyle_cty/15)

This Report is brought to you for free and open access by TopSCHOLAR®. It has been accepted for inclusion in Boyle County by an authorized administrator of TopSCHOLAR®. For more information, please contact [topscholar@wku.edu](mailto:topscholar@wku.edu).

IK  
7/15  
Boyle

# *Resources for Economic Development*

## Danville



**KENTUCKY**

---

RESOURCES FOR ECONOMIC DEVELOPMENT

DANVILLE, KENTUCKY

Prepared by  
The Kentucky Cabinet for Economic Development  
Division of Research  
in cooperation with  
Danville-Boyle County Chamber of Commerce

1993

Division Director - Pamela K. Riley; program manager - Keith Roberts; research - Richard H. Cobb; clerical - Wanda Sharp; graphics - Robert Owens, Pat Coleman; cartography - Edwin Scott, Dave Clark. Cost of printing paid from state funds.

## TABLE OF CONTENTS

<u>Chapter</u>	<u>Page</u>
DANVILLE, KENTUCKY - A RESOURCE PROFILE.....	1
THE LABOR MARKET STATISTICS.....	2
Labor Market Area Map.....	2
Population.....	3
Population Projections.....	3
Estimated Labor Supply.....	3
Labor Force Characteristics of Residents, 1991.....	4
Selected Components of Nonagricultural Employment, by Place of Work, 1991.....	5
Per Capita Personal Income.....	6
Average Placement Wages.....	7
Average Weekly Wages of Workers Covered by Unemployment Insurance 1990 - Bar Chart.....	8
Average Weekly Wages by Industry, by Place of Work, 1990.....	9
EXISTING INDUSTRY.....	10
Danville Manufacturing Firms, Their Products and Employment.....	10
Recent Industrial Developments.....	11
Labor Organizations in Manufacturing Firms.....	11
Selected Industrial Services.....	12
TRANSPORTATION.....	13
Highways.....	13
Truck Service.....	13
Selected Market Location Map.....	14
Rail.....	15
Air.....	15
UTILITIES.....	16
Electricity.....	16
Natural Gas.....	16
Public Water Supply.....	17
Sewerage.....	17
CLIMATE.....	18

<u>Chapter</u>	<u>Page</u>
LOCAL GOVERNMENT .....	19
Structure .....	19
Planning and Zoning .....	19
Local Fees and Licenses .....	19
State and Local Property Taxes .....	20
EDUCATION .....	21
Public Schools .....	21
Special Schools .....	21
Area Colleges and Universities .....	21
Vocational Training .....	23
OTHER LOCAL FACILITIES .....	25
Local Medical Personnel .....	25
Hospitals .....	25
Other Medical Facilities and Services .....	25
Banks and Savings & Loan Associations .....	25
Newspapers .....	25
Telephone Service .....	25
RECREATION .....	26
COMMUNITY IMPROVEMENTS .....	28

GENERAL HIGHWAY MAP  
**BOYLE COUNTY**  
KENTUCKY

PREPARED BY THE  
KENTUCKY TRANSPORTATION CABINET  
DEPARTMENT OF HIGHWAYS  
DIVISION OF PLANNING  
IN COOPERATION WITH THE  
U.S. DEPARTMENT OF TRANSPORTATION  
FEDERAL HIGHWAY ADMINISTRATION



## DANVILLE, KENTUCKY - A RESOURCE PROFILE

Danville, the county seat of Boyle County, is located in the gently rolling landscape of central Kentucky's Blue Grass Region. The city's central location and excellent transportation facilities contribute to the city's growth as a manufacturing and distribution center. Danville had a population of 12,420 in 1990. Danville is located 35 miles southwest of Lexington, Kentucky; 84 miles southeast of Louisville, Kentucky; 155 miles north of Knoxville, Tennessee; and 114 miles south of Cincinnati, Ohio.

Boyle County, with a land area of 181 square miles, had a 1990 population of 25,641 persons.

**The Economic Framework** - The total number of Boyle County residents employed in 1991 averaged 10,718. Manufacturing firms in the county reported 3,084 employees; wholesale and retail trade provided 3,513 jobs; 2,676 people were employed in service occupations; state and local government accounted for 1,548 employees; and contract construction firms provided 329 jobs.

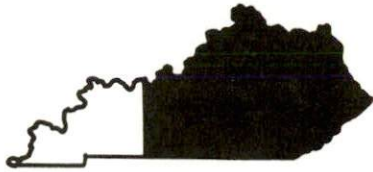
**Labor Supply** - There is a current estimated labor supply of 16,341 persons available for industrial jobs in the labor market area. In addition, from 1993 through 1997, 8,922 young persons in the area will become 18 years of age and potentially available for industrial jobs.

**Transportation** - Major "AAA"-rated (80,000-pound gross load limit) highways serving Danville are U.S. Highways 127 and 150. "AA"-rated highways (62,000-pound gross load limit) serving Danville are Kentucky Routes 33, 34 and 52. Thirty-three common carrier trucking companies provide interstate and/or intrastate service to the city. The Norfolk Southern Corporation provides main line rail service to the city. The Danville-Boyle County Airport maintains two paved runways of 4,800 and 2,400 feet. The nearest scheduled commercial airline service is available at the Bluegrass Airport near Lexington, 38 miles north of Danville.

**Power and Fuel** - Kentucky Utilities Company provides electric power to Danville and portions of Boyle County. The major portion of Boyle County is served by Inter-County Rural Electric Cooperative Corporation. Western Kentucky Gas Company provides natural gas service to Danville.

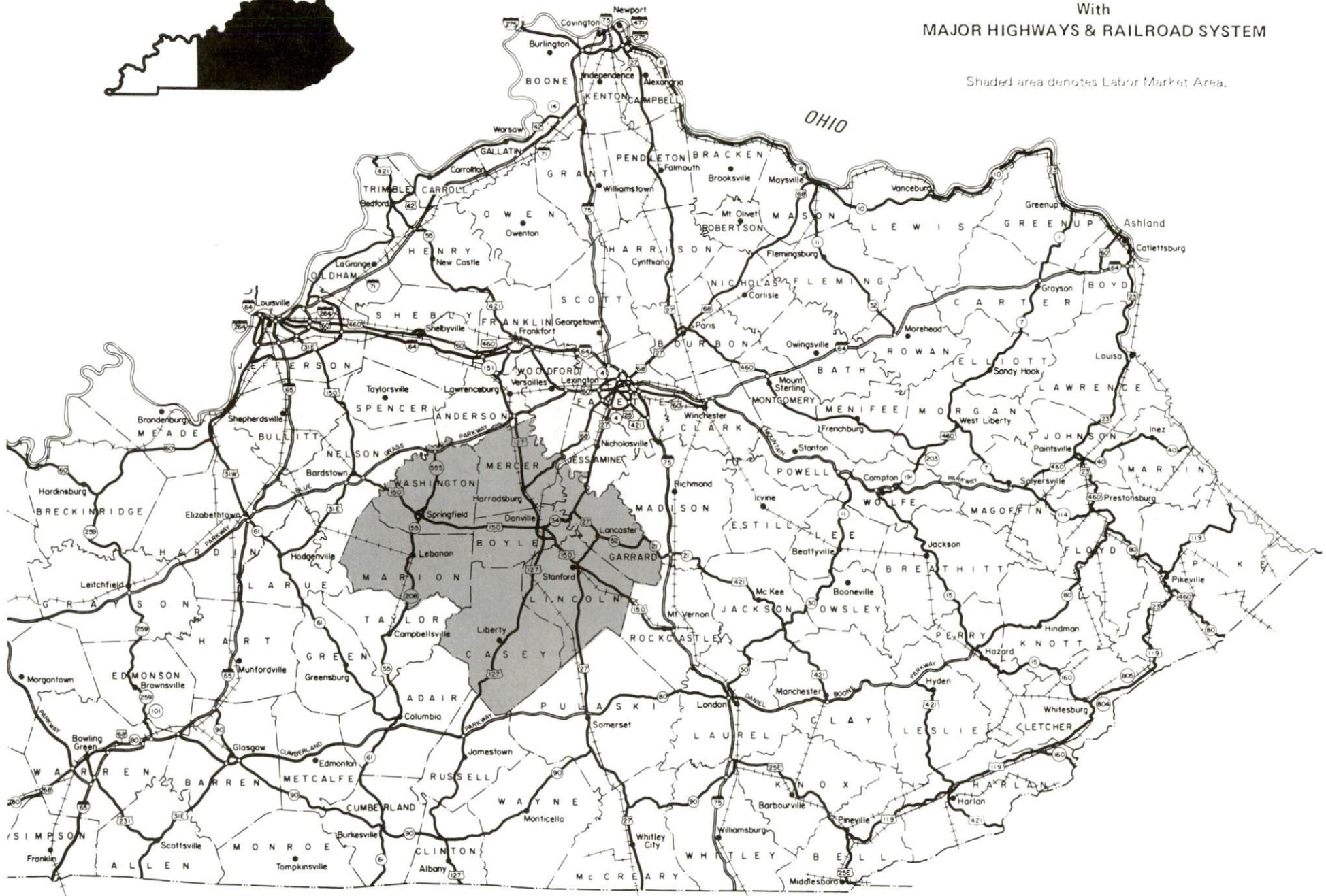
**Education** - Primary and secondary education is provided to Danville and Boyle County by the Danville Independent School System and the Boyle County School System. The Danville Independent School System is accredited by the Southern Association of Colleges and Schools. The Kentucky School for the Deaf is also located in Danville. Centre College, located in Danville, is an independent, four-year college which confers Bachelor of Arts and Bachelor of Science degrees. The Kentucky College of Business, also located in Danville, confers the Associate in Science degree. In addition, seven institutions of higher learning are located within 35 miles of Danville. Vocational training is available at the Central Kentucky State Vocational-Technical School in Lexington, 35 miles northeast of Danville; the Harrodsburg Area Vocational Education Center, 9 miles north of Danville at Harrodsburg; and the Garrard County Area Vocational Education Center at Lancaster, 12 miles east of Danville.





# DANVILLE LABOR MARKET AREA With MAJOR HIGHWAYS & RAILROAD SYSTEM

Shaded area denotes Labor Market Area.



## LABOR MARKET STATISTICS

The Danville Labor Market Area includes Boyle County and the adjoining Kentucky counties of Casey, Garrard, Lincoln, Marion, Mercer and Washington.

### POPULATION

	<u>1990</u>	<u>1980</u>	<u>1970</u>
Labor Market Area	117,564	117,475	104,313
Danville	12,420	12,942	11,542
Boyle County	25,641	25,066	21,861

Source: U.S. Department of Commerce, Bureau of the Census, January 1991.

### POPULATION PROJECTIONS

	<u>1995</u>	<u>2000</u>	<u>2010</u>	<u>2020</u>
Labor Market Area	119,123	120,185	121,241	120,861
Boyle County	25,729	25,703	25,508	24,991

Note: Population projections are from Moderate Growth Series forecast.

Source: University of Louisville, Urban Studies Center, State Data Center.

### ESTIMATED LABOR SUPPLY

	<u>Current</u>				<u>Future</u>
	<u>Total</u>	<u>Unemployed</u>	<u>Employed Part-Time</u>	<u>Not in Labor Force</u>	<u>Becoming 18 years of age 1993 thru 1997</u>
Labor Market Area*	16,341	4,006	5,182	7,153	8,922
Boyle County	2,886	809	1,244	833	1,834

\* Additional workers may be drawn from other nearby counties.

Note: Unemployed - persons unemployed and actively seeking work; Employed Part-Time - persons employed but working only 14 to 26 weeks per year; Not in Labor Force - represents the number of persons who would enter the labor force if suitable employment were available (based on the assumption that persons in Kentucky would like to participate in the labor force in the same proportion that they do nationally).

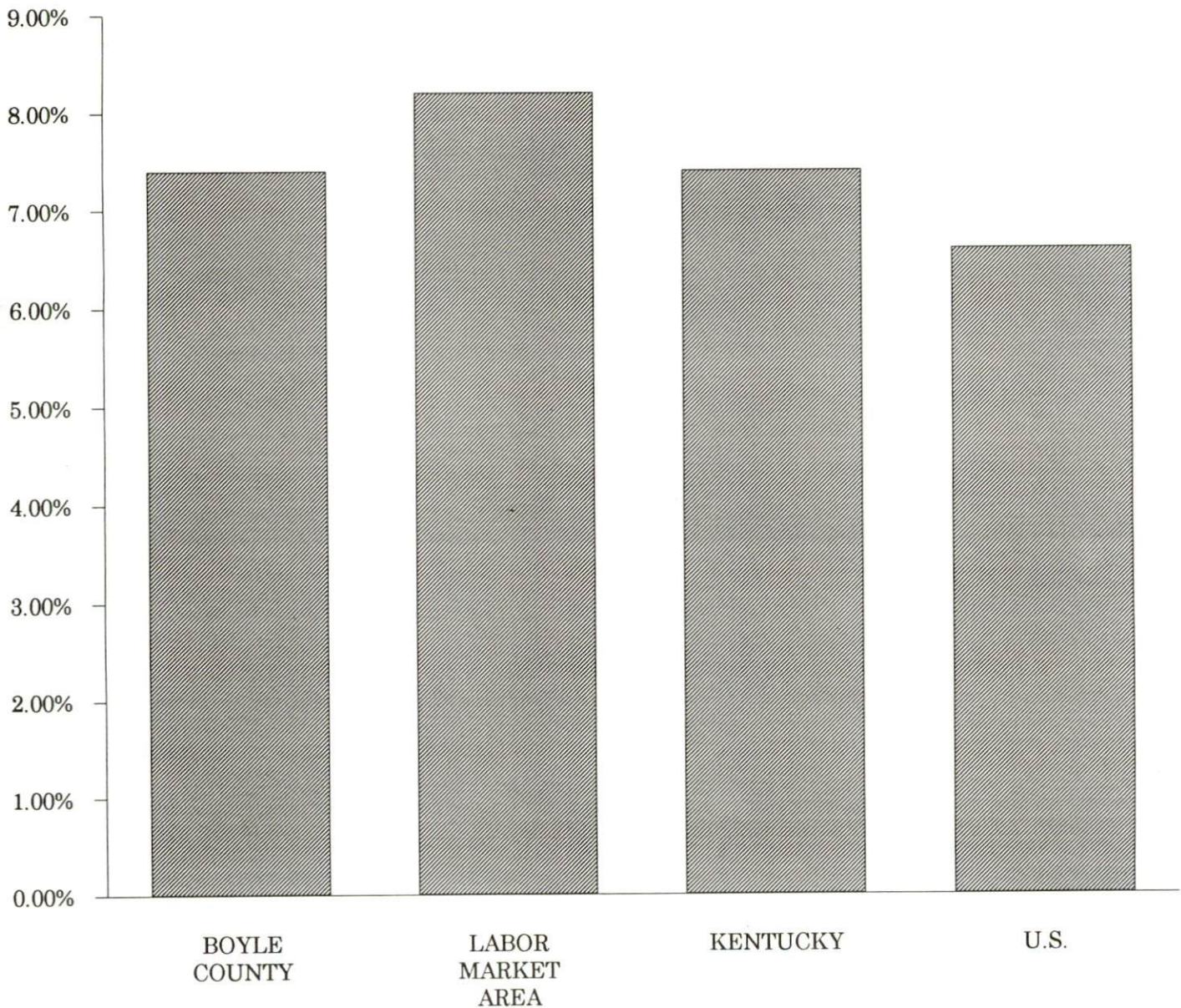
Sources: Kentucky Cabinet for Human Resources, Kentucky Labor Supply Estimates by County, 1989. Kentucky Cabinet for Economic Development, Future Labor Supply Becoming 18 Years of Age, 1993 thru 1997.

LABOR FORCE CHARACTERISTICS OF RESIDENTS, 1991

	<u>Boyle County</u>	<u>Labor Market Area</u>
Civilian Labor Force	11,577	53,960
Employment	10,718	49,557
Unemployment	859	4,403
Rate of Unemployment (%)	7.4	8.2

Source: Kentucky Cabinet for Human Resources, Kentucky Labor Force Estimates, Annual Averages, 1991.

UNEMPLOYMENT RATES  
1991

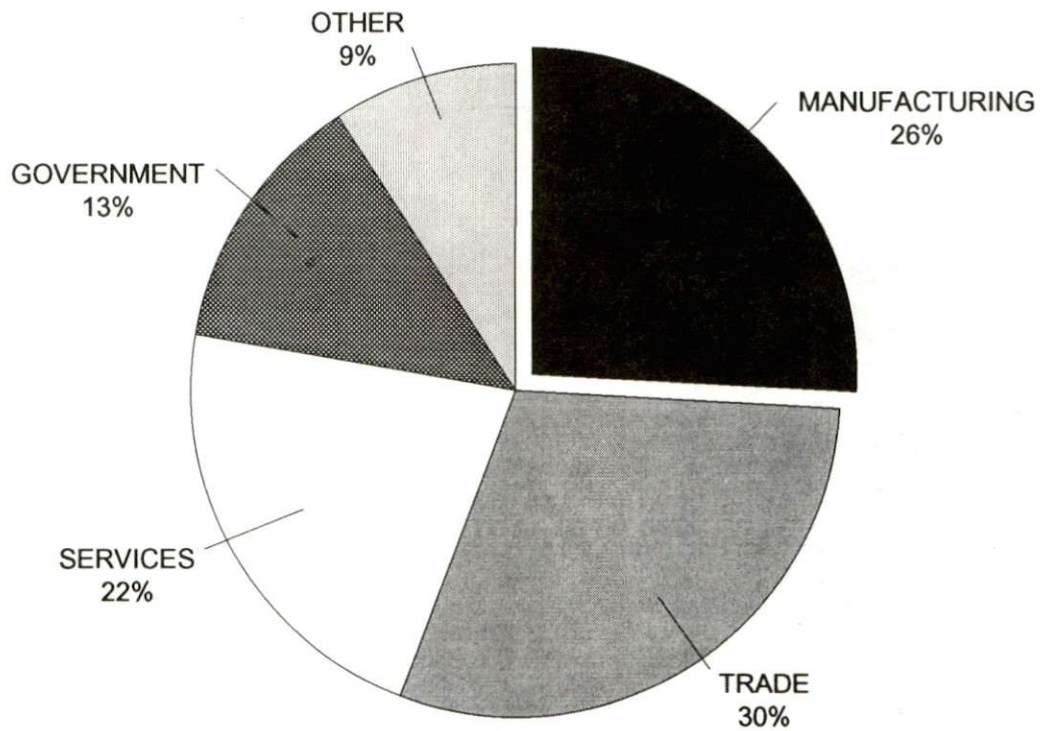


SELECTED COMPONENTS OF NONAGRICULTURAL EMPLOYMENT  
BY PLACE OF WORK, 1991

	Boyle County	Labor Market Area
All Industries (total)	11,937	31,398
Manufacturing	3,084	9,601
Wholesale & Retail Trade	3,513	7,612
Services	2,676	5,486
State/Local Government	1,548	5,124
Contract Construction	329	1,306

Note: Excludes domestic workers, railway workers, certain nonprofit corporations, majority of federal government workers, and self-employed workers.  
 Source: Kentucky Cabinet for Human Resources, Average Monthly Workers Covered by Kentucky Unemployment Insurance Law, 1991.

BOYLE COUNTY

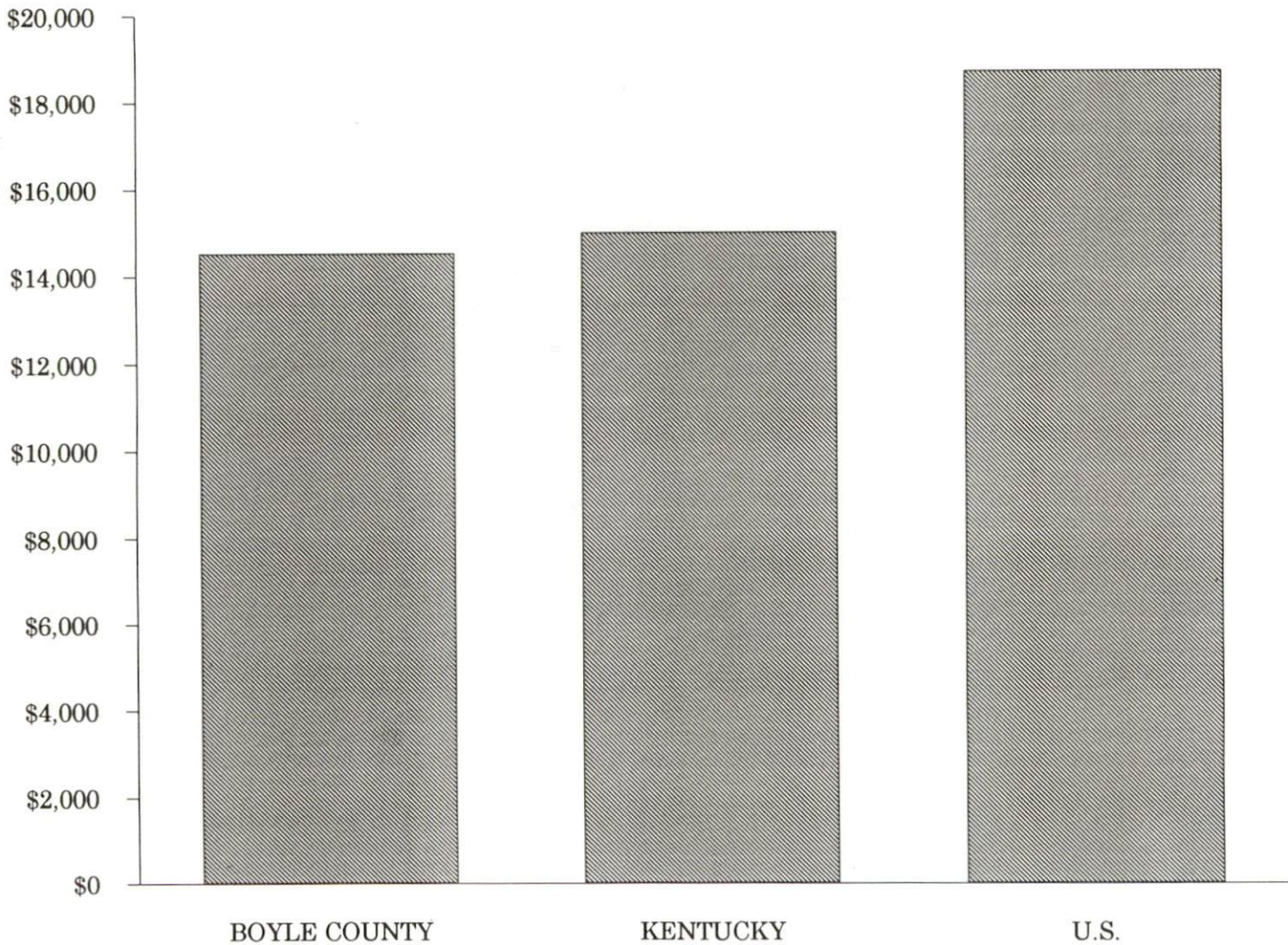


PER CAPITA PERSONAL INCOME

Area	1986	1990	Percent Change
Boyle County	\$11,468	\$14,527	26.7
Labor Market Area Range	\$7,314 - \$11,793	\$10,241 - \$15,892	-
Kentucky	\$11,273	\$14,992	33.0
U.S.	\$14,654	\$18,696	27.6

Source: U.S. Bureau of Economic Analysis, Kentucky Economic Information System, April 1992.

PER CAPITA PERSONAL INCOME  
1990



## AVERAGE PLACEMENT WAGES

---

Boyle County is served by the Danville local office of the Kentucky Department for Employment Services. The focus of the following data is on job placements made by the Danville local office and may therefore be used as an indicator of the wages which employers in the area pay new employees. During the twelve months which ended on June 30, 1990, the local employment office filled 2,164 job openings in various occupational categories. The average hourly wage for selected occupational categories were:

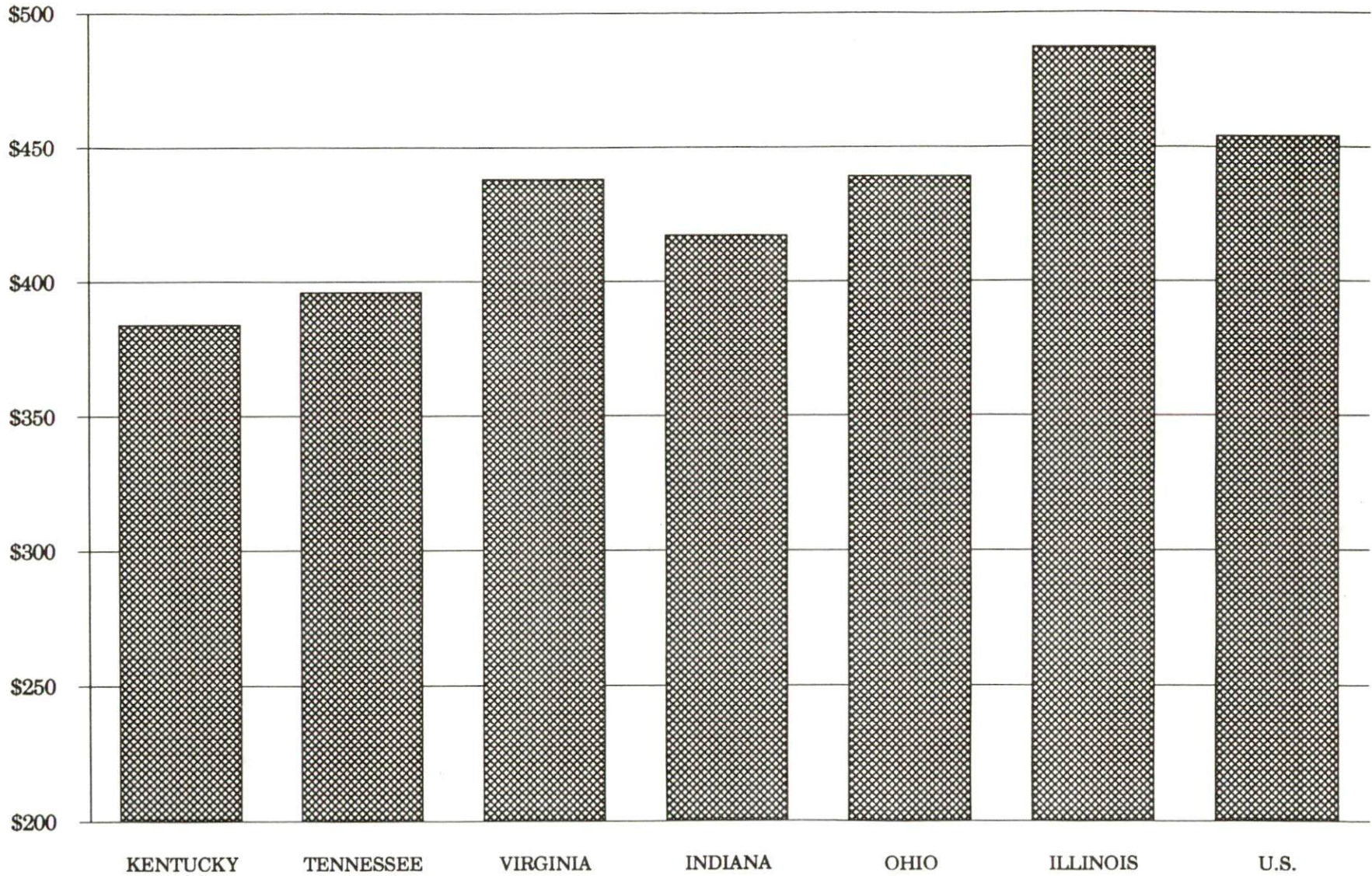
<u>OCCUPATIONAL CATEGORY</u>	<u>NUMBER OF PLACEMENTS</u>	<u>AVERAGE WAGE(\$)</u>
All Occupations	2,164	5.23
Clerical	318	4.03
Sales	90	3.95
Services (excluding domestic)	275	3.56
Agricultural, Fishery, Forestry, etc.	37	3.83
Processing	139	5.92
Machine Trades	407	6.56
Bench Work	559	5.60
Structural	128	6.27
Motor Freight/ Transportation	11	3.95
Packaging and Materials Handling	168	5.51

The Danville local office also serves Garrard, Lincoln, and Mercer Counties. The above occupational categories are taken from the Dictionary of Occupational Titles published by the U.S. Department of Labor.

---

Source: Kentucky Cabinet for Human Resources, Department for Employment Services.

AVERAGE WEEKLY WAGES OF WORKERS COVERED BY  
UNEMPLOYMENT INSURANCE - 1990



AVERAGE WEEKLY WAGES BY INDUSTRY  
BY PLACE OF WORK, 1990\*

	Boyle County	Kentucky (State- Wide)	Tennessee	Virginia
All Industries	\$357.22	\$379.97	\$396.00	\$438.00
Mining & Quarrying	N/A	654.24	535.00	635.00
Contract Construction	314.19	401.70	421.00	444.00
Manufacturing	474.20	496.95	449.00	487.00
Transportation, Communications & Public Utilities	614.66	500.70	523.00	575.00
Wholesale & Retail Trade	253.37	255.93	N/A	N/A
Finance, Insurance & Real Estate	374.30	434.93	469.00	508.00
Services	303.21	329.76	378.00	430.00
State/Local Government	372.43	392.28	N/A	N/A
	<u>Indiana</u>	<u>Ohio</u>	<u>Illinois</u>	<u>U. S.</u>
All Industries	\$417.00	\$439.00	\$487.00	\$454.00
Mining & Quarrying	746.00	619.00	747.00	714.00
Contract Construction	475.00	504.00	624.00	503.00
Manufacturing	561.00	595.00	590.00	555.00
Transportation, Communications & Public Utilities	519.00	553.00	610.00	578.00
Wholesale & Retail Trade	N/A	N/A	N/A	N/A
Finance, Insurance & Real Estate	442.00	478.00	619.00	571.00
Services	349.00	382.00	444.00	423.00
State/Local Government	N/A	N/A	N/A	N/A

\* Wages for U.S. and surrounding states rounded to nearest dollar.

N/A Not Available.

Note: The average weekly wage for each category includes the salaries and wages of all persons working for that type business. For example, the manufacturing category includes both production workers and administrative personnel. Excludes domestic workers, railway workers, certain nonprofit corporations, majority of federal government workers, and self-employed workers.

Source: Kentucky Cabinet for Human Resources, Average Weekly Wages of Workers Covered by Kentucky Unemployment Insurance Law, 1990. U.S. Department of Labor, Bureau of Labor Statistics, Employment and Wages, Annual Averages, 1990, November 1991.



EXISTING INDUSTRY

DANVILLE MANUFACTURING FIRMS,  
THEIR PRODUCTS AND EMPLOYMENT

<u>Firm</u> <u>(Establishment date)</u>	<u>Product</u>	<u>1992</u> <u>Average Employment</u>
ATR Wire & Cable Company, Inc. (1971)	Steel tire cord	740
Ad Mart International (1984)	Signs, dimensional display lettering and logo reproductions	98
Advocate Communications, Inc., DBA-The Advocate Messenger (1865)	Newspaper, commercial printing	78
Boyle Block Company (1943)	Concrete block	16
Burkman Industries, Inc., DBA-Burkman Mills (1979)	Animal feed	48
Fred Cain Farm Equipment Company (1959)	Tractor accessories, field tillers	32
Caldwell Stone Company, Inc. (1928)	Crushed stone, agricultural lime	18
Clark Material Handling Company (1991)	Tow tractors, lift trucks	90
Concrete Materials Corporation (1948)	Concrete block, septic tanks & water troughs, ready-mixed concrete	8
Dana Corporation, Victor Product Division, Danville Gasket Plant (1989)	Automotive head gaskets	100
Deerfield Plastics Company, Inc. (1978)	Polyethylene film	103
R.R. Donnelley & Sons Company (1985)	Catalogs, magazines	700
The Elements Pottery (1972)	Beeswax candles, pottery	8
Genesco, Inc. (1946)	Men's shoes	175
Hill Tool & Die Company, Inc. (1988)	Die making, die maintenance	15
J.B. Enterprises, Inc. (1969)	Fiberglass boats	30
Jackson of Danville (1946)	Tables, upholstered chairs & sofas	120
Jannock Steel Fabrication, Inc. DBA-Voc West Steel (1982)	Steel fabrication, steel roofing & siding	33
Lincoln County Ready Mix (1992)	Ready-mixed concrete	3

(Continued)

<u>Firm</u> <u>(Establishment date)</u>	<u>Product</u>	<u>1992</u> <u>Average Employment</u>
Mathews Conveyor Company (1973)	Unit handling conveyors	490
Matsushita Floor Care (1990)	Vacuum cleaners	740
Phillips Lighting Corporation (1952)	Glass bulbs, tubing	350
Pioneer Vocational/Industrial Service, Inc. (1969)	Mechanical sub-assemblies, foam packaging	50
Sammi Sound Technology Corporation DBA-Stanford Acoustics (1990)	Speakers & speaker system	30
Sellers Engineering Company (1947)	Water deaerating equipment, commercial gas fired water heaters, boilers	N/A
Sparrows' Greenleaf Plant Foods (1953)	Fertilizer mixing	9

Sources: Kentucky Cabinet for Economic Development, Division of Research, Danville-Boyle County Chamber of Commerce.

#### LABOR ORGANIZATIONS IN MANUFACTURING FIRMS

<u>Union</u>	<u>Representing workers at:</u>
American Flint Glass Workers Union, AFL-CIO	Phillips Lighting Corporation

#### RECENT INDUSTRIAL DEVELOPMENT

Clark Material Handling Company initiated operations in Danville in March 1991. The firm manufactures tow-tractors and lift trucks with 10,000 and 35,000 pound capacity. The company currently employs approximately 90 persons.

R.R. Donnelly & Sons expanded its facility to 370,000 square feet and added approximately 25 additional employees in 1991.

#### DISTRIBUTION CENTERS

<u>Firm</u> <u>(Establishment date)</u>	<u>Employment</u>
American Greeting Corporation (1965)	864
Kay-Bee Toy and Hobby Shop, Inc. (1985)	80
Thom McAn Shoe Company, Inc. (1981)	150

Sources: Danville-Boyle County Chamber of Commerce.

SELECTED INDUSTRIAL SERVICES

<u>Types of Services</u>	<u>Location</u>	<u>Mileage from Danville</u>
Custom Data Processing	Danville	-
Custom Plastics Producers	Danville	-
Electric Motor Repair	Lebanon	31
Grinding, Precision & Tool	Lexington	35
	Richmond	36
Heat Treating Facilities	Lexington	35
	Richmond	36
Industrial Equipment & Supplies	Springfield	27
Industrial Gases	Lexington	35
Industrial Waste Removal	Lexington	35
	Richmond	36
Machine Shops, Tool & Die	Danville	-
Metal Castings	Cynthiana	69
Metal Finishers	Lexington	35
	Richmond	36
Metal Service Centers	Lexington	35
	Richmond	36
Millwrights	Lexington	35
Public Warehouse Facilities	Danville	-

Sources: Kentucky Cabinet for Economic Development, Division of Research.

## TRANSPORTATION

### Highways

U.S. Highways 127 and 150 are "AAA"-rated (80,000-pound gross load limit) highways serving Danville. U.S. 127 provides Danville with four-lane access to the Blue Grass Parkway, 24 miles to the north. The Blue Grass Parkway is a multi-lane highway which connects with Interstate 65, 67 miles west of Danville.

U.S. 150 provides direct access to Interstate 75, 38 miles southeast of Danville and to U.S. Highway 27, 11 miles southeast. Interstate 75 is also accessible 38 miles east of Danville via U.S. 150 and Kentucky Route 1295 and 52. U.S. 127 continues south to the multi-lane Cumberland Parkway, 51 miles south of Danville.

Kentucky Routes 33 and 34, both "AA"-rated highways (62,000-pound gross load limit), also serve Danville.

A highway improvement project was completed for Kentucky Route 34 from Danville to U.S. Highway 27. The project included construction of a new bridge and widening of the highway.

Reconstruction of U.S. Highway 127 South from Danville to Liberty is under way. A U.S. 127 bypass around Danville was completed in 1992.

#### HIGHWAY MILES FROM DANVILLE, KENTUCKY, TO SELECTED MARKET CENTERS

City	Highway Miles	City	Highway Miles
Atlanta, GA	338	Los Angeles, CA	2,156
Baltimore, MD	571	Louisville, KY	84
Birmingham, AL	361	Nashville, TN	180
Chicago, IL	364	New Orleans, LA	700
Cincinnati, OH	114	New York, NY	749
Cleveland, OH	354	Pittsburgh, PA	377
Detroit, MI	374	St. Louis, MO	342
Knoxville, TN	155		

Note: Mileage computations are via the best interstate or primary highways, not necessarily the most direct route of travel.

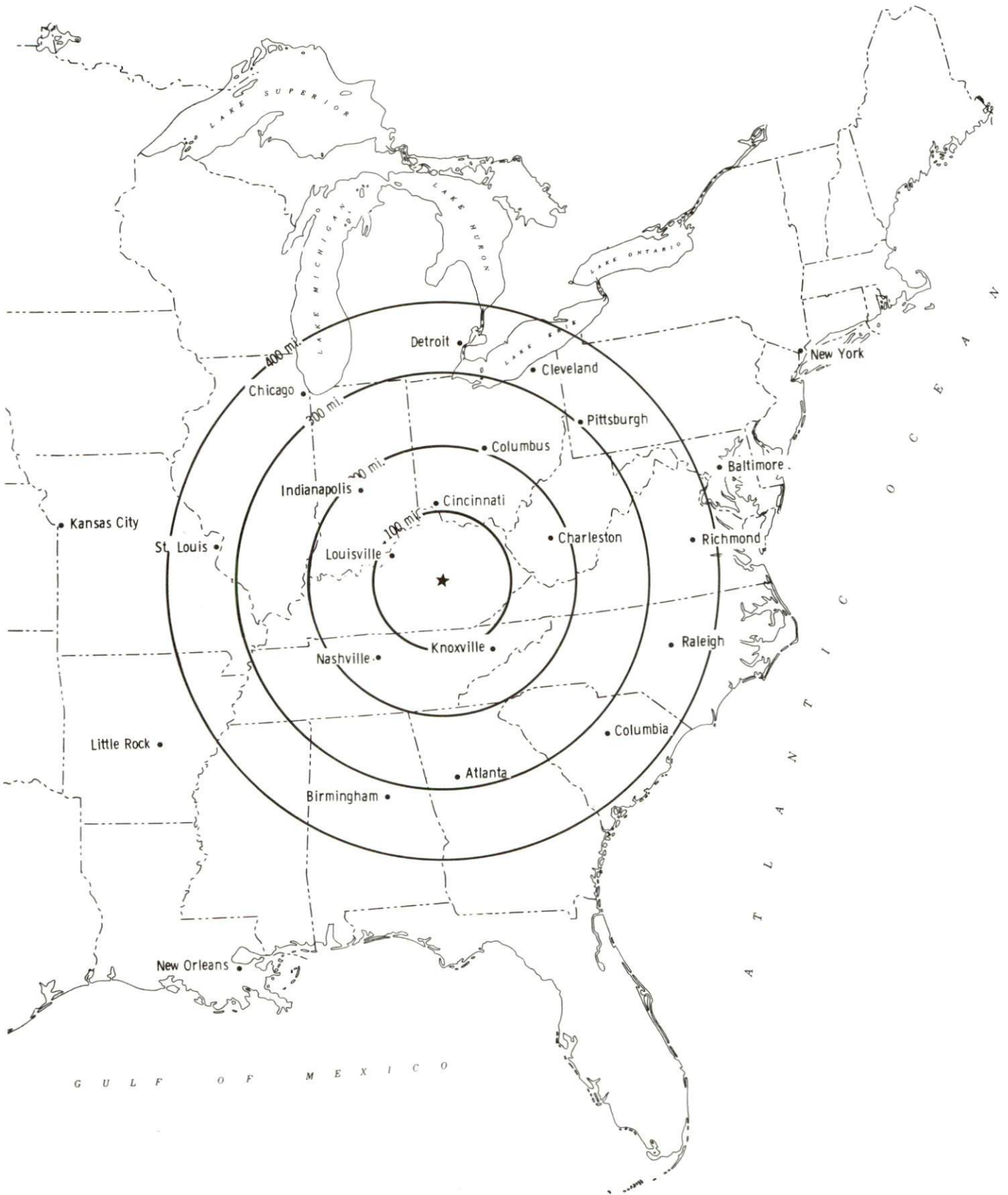
Sources: Rand McNally Standard Highway Mileage Guide, 1990. Official Kentucky Mileage Map, 1985.

### Truck Service

There are currently thirty-three common carrier trucking companies that provide interstate and/or intrastate service to Danville.

Source: American Motor Carrier Directory, Fall 1992.

# Selected Market Centers



## Rail

The Norfolk Southern Corporation provides main line rail service to Danville. They also provide the nearest piggyback facilities at Georgetown, 60 miles north of Danville.

For details on routing, schedules, rates, and services contact:

District Sales Manager  
Norfolk Southern Corporation  
1402 South 15th Street  
Louisville, Kentucky 40210  
(502) 636-6023

## Air

### Local

Location:	Goodall Field, Danville-Boyle County Airport 4 miles south of Danville
Runways:	Two paved
Length:	4,800 feet and 2,400 feet
Traffic	
Control:	Wind sock, instrument approach, Unicom 122.8
Lighting:	Rotating beacon, dusk to dawn; VASI, REILS
Services:	100 octane and jet-A fuel; major and minor A & P repairs; hangar; tie-downs, flight instruction; car rental
Air Freight Service:	Chartered air freight service must be arranged

Goodall Field, Danville-Boyle County Airport, has plans to install an AWOS3 (All Weather Observation Station) and a localizer landing system.

### Nearest Scheduled Commercial Airline Service

Location:	Bluegrass Airport 4 miles west of Lexington, Kentucky; 38 miles north of Danville
Air Service:	Delta, USAir, United Express, American Eagle, ComAir, TW Express, Atlantic Southeast Airlines, Northwest AirlinK, Henson Airlines
Daily Arrivals & Departures:	120

## UTILITIES

### Electricity

Company serving Danville and portions of Boyle County - Kentucky

Utilities Company

Source of power - Kentucky Utilities Company

For industrial rates contact:

Industrial Development Department  
Kentucky Utilities Company  
One Quality Street  
Lexington, Kentucky 40507  
(606) 255-2100

Company serving a major portion of Boyle County - Inter-County Rural

Electric Cooperative Corporation

Source of power - East Kentucky Power Cooperative

For industrial rates contact:

Industrial Development Department  
East Kentucky Power Cooperative  
P.O. Box 707  
Winchester, Kentucky 40392-0707  
(606) 744-4812

and/or

Inter-County Rural Electric  
Cooperative Corporation  
P.O. 87  
Danville, Kentucky 40422  
(606) 236-4561 Fax (606) 236-3627

### Natural Gas

Company serving Danville - Western Kentucky Gas Company

Source of supply - Tennessee Gas Transmission Corporation

For rates and supplies contact:

Western Kentucky Gas Company  
P.O. Box 866  
Owensboro, Kentucky 42302  
(502) 685-8067

## Public Water Supply

Company serving Danville - City of Danville  
P.O. Box 670  
Danville, Kentucky 40423-0670  
(606) 238-1200 Fax (606) 238-1236

Source - Herrington Lake  
Treatment plant capacity - 10,000,000 gallons per day  
Average daily consumption - 3,780,000 gallons  
Peak daily consumption - 5,520,000 gallons  
Storage capacity - 5,200,000 gallons  
Water pressure - 64 psi to 92 psi

The City of Danville Water Division has recently upgraded the water treatment plant from 5,000,000 gallons per day to 10,000,000 gallons per day.

## Sewerage

Company serving Danville - City of Danville  
P.O. Box 670  
Danville, Kentucky 40423-0670  
(606) 238-1200 Fax (606) 238-1236

Design capacity - 3,500,000 gallons per day  
Average daily flow - 2,080,000 gallons  
Type of treatment - Primary and secondary  
Treated effluent discharged into - Clarks Run Creek

The City of Danville Sewer Division completed construction of a new aerated facultative/flow equalization lagoon in November 1990.



## CLIMATE

### Boyle County

#### Temperature

Normal (30-year record)	54.90 degrees
Average annual 1991	57.30 degrees
Record highest, July 1988 (47-year record)	103.00 degrees
Record lowest, January 1963 (47-year record)	-21.00 degrees
Normal heating degree days (30-year record)	4,814
(Heating degree day totals are the sums of negative departures of average daily temperatures from 65 degrees F.)	

#### Precipitation

Normal (30-year record)	45.68 inches
Mean annual snowfall (47-year record)	15.70 inches
Total precipitation 1991	41.80 inches
Mean number days precipitation (.01 inch or more) (47-year record)	129.40
Mean number days thunderstorms (47-year record)	44.90

#### Prevailing winds (through 1963)

South

#### Relative Humidity (28-year record, except 1 a.m. - 27-year record)

1 a.m.	77 percent
7 a.m.	82 percent
1 p.m.	60 percent
7 p.m.	64 percent

Source: U.S. Department of Commerce, Environmental Science Services Administration, Climatological Data, 1991. Station of record: Lexington, Kentucky.

## LOCAL GOVERNMENT

### Structure

The city of Danville is served by a mayor, four city commissioners, and a city manager. The mayor serves a four-year term and the commissioners serve two-year terms. Boyle County is served by a county judge/executive and six magistrates. The county judge/executive and magistrates are elected to four-year terms.

### Planning and Zoning

Joint agency - Danville-Boyle County Planning and Zoning Commission

Participating cities - Danville, Junction City and Perryville

Zoning enforced - All areas

Subdivision regulations enforced - All areas

Mandatory state codes enforced - Kentucky Plumbing Code, National

Electric Code, Kentucky Boiler Regulations and Standards, Kentucky Building Code (modeled after BOCA code)

### Local Fees and Licenses

The City of Danville levies a business license fee of \$25 annually. An occupational license fee of one percent is levied on wages, salaries and commissions of individuals and on net profits of business with a minimum of \$25.

Boyle County levies an occupational license fee of 0.45 of one percent on wages, salaries and commissions of individuals and on net profits of businesses.

PROPERTY TAXES

The Kentucky Constitution requires the state to tax all classes of taxable property, and state statutes allow local jurisdictions to tax only a few classes. All locally taxed property is subject to county taxes and school district taxes (either a county school district or an independent school district). Property located inside of city limits may also be subject to city property taxes.

Special local taxing jurisdictions (fire protection districts, watershed districts, and sanitation districts) levy taxes within their operating areas (usually a small portion of community or county).

Property assessments in Kentucky are at 100% fair cash value. A 15% reduction is automatically granted for accounts receivable.

**STATE PROPERTY TAX RATES PER \$100 VALUATION**

<u>Selected Classes of Property</u>	<u>1991 State Rate</u>	<u>Local Taxation Permitted</u>
Real Estate	\$0.187	YES
Manufacturing Machinery	0.150	NO
Pollution Control Equipment	0.150	NO
Inventories		
Raw Materials	0.050	NO
Goods in Process	0.050	NO
Finished Goods	0.050	YES
Motor Vehicles	0.450	YES
Other Tangible Personal Property	0.450	YES
Intangibles (Accounts Receivable, Money on Hand)	0.250	NO

**LOCAL PROPERTY TAX RATES PER \$100 VALUATION, 1991**

<u>Taxing Jurisdiction</u>	<u>Real Estate</u>	<u>Finished Goods &amp; Tangibles</u>	<u>Motor Vehicles</u>
Boyle County	\$0.1196	\$0.1343	\$0.1360
School Districts:			
Boyle County	0.4200	0.4200	0.5380
Danville Independent	0.5070	0.5070	0.6690
Cities:			
Danville	0.1815	0.1815	None

## EDUCATION

### Public Schools

	Danville Independent	Boyle County
Total Enrollment (Fall, 1991)	1,880	2,520
Accreditation	Southern Association of Colleges and Schools	
Pupil-Teacher Ratio (1990-91)	16.4-1	16.4-1
Percent High School Graduates to College (1990-91)	70.2	59.1
Expenditures Per Pupil (1990-91)	\$3,636.33	\$3,296.82

### Special Schools

<u>School</u>	<u>Enrollment</u>	<u>Grades</u>
Kentucky School for the Deaf	325	K-12

The Kentucky School for the Deaf is a state-supported institution for the hearing impaired. The school's instructional program offers both elementary and secondary education, as well as vocational training and career preparation programs.

### Area Colleges and Universities

<u>Name</u>	<u>Location (Mileage from Danville)</u>	<u>Enrollment (Fall, 1992)</u>
Centre College	Danville	906
Asbury College	Wilmore (24)	1,138
Saint Catharine College	Springfield (27)	353
Berea College	Berea (33)	1,579
Lexington Community College	Lexington (35)	4,862
Transylvania University	Lexington (35)	974
University of Kentucky	Lexington (35)	24,197
Eastern Kentucky University	Richmond (36)	16,866

## **Centre College**

Centre College, founded in 1819, is a co-educational, four-year liberal arts college with a heritage of academic excellence. Centre offers majors in 23 programs, as well as a dual degree engineering program (3 years at Centre, 2 years at an engineering school leading to a B.S. and M.S.). Centre is accredited by the Southern Association of Colleges and Schools and is the only private college in Kentucky with a Phi Beta Kappa chapter.

Centre College has \$20 million of campus improvements planned. These improvements include; beautification of the College's park-like setting; construction of at least one new residence hall and new Greek houses in addition to the continued renovation of existing student housing facilities; construction of a new student center; renovation of Sutcliffe Hall into a total athletic facility; renovation of the Carnegie Library building; improve playing fields and construction of indoor tennis courts.

## **Kentucky College of Business**

Kentucky College of Business is accredited as a junior college of business, and the Danville location is one of the school's six campuses in the state. The college offers six degree programs and six diploma programs in secretarial business management, legal and medical secretary, data processing, and accounting fields. The college confers the Associate in Science degree.

## **Lindsey Wilson College**

Lindsey Wilson College offers an evening degree program in Danville, where one can earn an associate degree in less than two years by attending classes two evenings per week. The program is designed for busy adults, and a counselor is available to provide pre-enrollment counseling, academic guidance, and advice about financial aid, and will arrange transfer credits for college level work completed at another institution.

## VOCATIONAL-TECHNICAL TRAINING

Kentucky Tech schools are operated by the Cabinet for Workforce Development and provide secondary (Sec) and postsecondary (P/S) vocational-technical training.

<u>Kentucky Tech Schools</u>	<u>Location (Mileage from Danville)</u>	<u>Number of Program Offerings</u>	<u>Cumulative Enrollment 1991-1992</u>		<u>Approximate Number Completing Programs Annually</u>
			<u>Sec</u>	<u>P/S</u>	
Danville School of Health Occupations	-	2	<u>56</u>	<u>129</u>	72
Central Kentucky State Vocational Technical School	Lexington (35)	18		<u>1,061</u>	269
Garrard County Area Vocational Education Center	Lancaster (12)	6	<u>209</u>	<u>5</u>	65
Harrodsburg Area Vocational Education Center	Harrodsburg (9)	6	<u>225</u>	<u>11</u>	96

A five million dollar expansion was completed at Kentucky Tech-Central in the fall of 1992. The expansion includes a new manufacturing technology facility that houses manufacturing related programs such as machine tool technology, computer aided drafting, electronics and industry electrical technology. A computer-integrated work cell laboratory in one room of the building links all the programs, simulating the operation of an actual manufacturing plant. Applied physics, hydraulics and quality control applications are integrated into the curriculum.

Another room in the new facility can be used by business and industry for start-up and new production training.

Moving all manufacturing-related training into one building provided space for Kentucky Tech-Central to add health care programs as part of its expansion. These include medical imaging, medical assisting, bio-medical technician and laboratory technician programs.

### Customized Training

The Kentucky Tech system, through its Training and Development Coordinators will provide technical assistance and will identify and develop low cost customized training programs and services for existing, as well as new and expanding businesses and industries.

Businesses and industries needing customized training or a continuing education program for its employees should simply contact a Training and Development Coordinator located at the Kentucky Tech North Central office in Lexington.

#### Assessment Services

Kentucky Tech Career Connections offers to business, education, and government agencies customized assessment in career inventories, interest inventories, psychomotor skills and academic potential, as well as pre-hire assessment. The Career Connections Assessment Center is located on the campus of Kentucky Tech-Central.

#### Adult Education Services

Adult education programs are available to adults who want to develop new skills, improve basic skills or earn a high school equivalency diploma. In Danville, adult literacy is provided by the Danville/Boyle County Literacy Program and adult basic education is provided through the Danville Adult Learning Center at Danville High School.

#### Bluegrass State Skills Corporation

The Bluegrass State Skills Corporation, an independent public corporation created and funded by the Kentucky General Assembly, provides programs of skills training to meet the needs of business and industry from entry level to advanced training, and from upgrading present employees to retraining experienced workers.

The Bluegrass State Skills Corporation is a major source for skills training assistance for a new or existing company. The Corporation works in partnership with other employment and job training resources and programs, as well as Kentucky's economic development activities, to package a program customized to meet the specific needs of a company.

## OTHER LOCAL FACILITIES

### Local Medical Personnel

Physicians - 59  
Dentists - 17

### Hospitals

<u>General Hospital</u>	<u>Location</u>	<u>Beds</u>
Ephraim McDowell Regional Medical Center	Danville	117

Medical staff - 53 active physicians, 142 registered nurses,  
101 licensed practical nurses

### Other Medical Facilities and Services

Southern Bluegrass Comprehensive  
Care Center  
Boyle County Health Department  
Danville-Boyle County Rescue Squad

### Banks and Savings and Loan Associations

Bank of Danville & Trust Company  
Central Kentucky Federal Savings &  
Loan Association  
Farmers National Bank  
First Security Bank & Trust  
Company of Danville  
Great Financial Federal

### Newspapers

The Advocate-Messenger (daily)  
The Kentucky Advocate (weekly)

### Telephone Service

South Central Bell



## RECREATION

### Local

Danville and Boyle County offer a wide variety of recreational opportunities. Public recreation facilities include three large parks, five mini-parks, nine playgrounds, two tennis courts, three baseball diamonds, four softball fields, four football fields and four soccer fields. The Danville-Boyle County Recreational Department offers year-round programs for all ages. The city sponsors exercise, karate, indoor soccer, and arts and crafts programs. A supervised playground program is available during the summer months, and sports enthusiasts may participate in leagues for basketball, football, baseball, softball, fast-pitch softball, and soccer. The state YMCA also offers a variety of year-round activities. A community theatre is also active in Danville, and presents several productions each year. Private recreational facilities include a country club, two golf courses, two swimming pools, four movie theatres, a bowling facility, a roller-skating rink and a racquetball court.

**Crawford Springs Park**, a small county park two miles from Perryville, offers a nature area, picnic and barbecue equipment, and wildflower and tree identification.

Construction of a new city park is being planned. The park will include the following: a public pool, four baseball fields, four softball field, five tennis courts, a jogging/walking trail, shelters, five basketball courts, five soccer fields, two football fields, playgrounds, restrooms, and concession stands.

**Constitution Square State Historic Site**, in Danville, is a reproduction of Kentucky's first courthouse square, including the original 1792 post office which was the first in the west.

The **McDowell House** is the home in which pioneer surgeon Dr. Ephraim McDowell lived and worked. Now a registered national historic landmark, the house is located adjacent to Constitution Square and is open to the public year-round. The **Apothecary Shop** next door displays authentic 18th and 19th century pharmaceuticals.

The **Centre College** campus is the site of a variety of intercollegiate sports activities throughout the fall, winter and spring months. The college's track is available for public use. The **Norton Center for the Arts**, also located on the Centre campus, offers a variety of cultural and entertainment activities, including art exhibitions, concerts and theatrical performances by national touring companies to the college and the community-at-large.

The **Great American Brass Band Festival**, held on the campus of Centre College during June, features some of the world's top brass bands.

Dining and outdoor theatre is available at **Pioneer Playhouse**. An 18th century village has been constructed on the theatre grounds, depicting a typical street scene at the time Kentucky's constitution was adopted.

Central Kentucky Wildlife Refuge, a 500-acre, non-profit refuge, is located in western Boyle County. Open seven days per week, it offers hiking trails, and a wildflower walk is scheduled each April.

Area (Within 20 miles)

Perryville Battlefield State Historic Site  
Isaac Shelby Cemetery State Historic Site  
Herrington Lake  
Old Fort Harrod State Park  
Shaker Village of Pleasant Hill  
William Whitley House State Historic Site

## COMMUNITY IMPROVEMENTS

Danville re-certified as a "Kentucky Certified City" in 1992, and is distinguished as a gold award winner recognizing nine consecutive years of certification. Re-certification is based on achievement in the following areas: existing industry assistance, small business assistance, educational resources, and community development factors of health care, public safety, arts and culture, recreation, governmental awareness and resources. In addition to receiving the 1992 Gold Award, Danville was recognized as a Hall of Fame community. This newly created category not only demonstrates that a community is adequately prepared for immediate growth, but also that the community has analyzed emerging economic trends, and has set about planning for the future. The Certified Cities Program is sponsored by the Kentucky Chamber of Commerce.

### Recent

Clark Material Handling Company initiated operations in Danville in March 1991. The firm manufactures tow-tractors and lift trucks with 10,000 and 35,000 pound capacity. The company currently employs approximately 90 persons.

R.R. Donnelly & Sons expanded its facility to 370,000 square feet and added approximately 25 additional employees in 1991.

Goodall Field, Danville-Boyle County Airport, has plans to install an AWOS3 (All Weather Observation Station) and a localizer landing system.

A five million dollar expansion was completed at Kentucky Tech-Central in the fall of 1992. The expansion includes a new manufacturing technology facility that houses manufacturing related programs such as machine tool technology, computer aided drafting, electronics and industry electrical technology. A computer-integrated work cell laboratory in one room of the building links all the programs, simulating the operation of an actual manufacturing plant. Applied physics, hydraulics and quality control applications are integrated into the curriculum.

The City of Danville Water Division has upgraded the water treatment plant from 5,000,000 gallons per day to 10,000 gallons per day.

The City of Danville Sewer Division completed construction of a new aerated facultative/flow equalization lagoon in November 1990.

Heart of Danville, Inc. which is affiliated with the Kentucky Main Street Program, has in 1990 and 1991, offered advice and assistance on more than 27 building rehabilitation projects, resulting in nearly 650,000 of reinvestment on commercial property.

Through the Bluegrass Regional Recycling Corporation, a county operated recycling center initiated operations in Boyle County in 1991.

Workforce Center - A Children's Place opened in Danville in 1992. The \$1.75 million, 18,500 square-foot facility was constructed near the industrial park on land donated by the Boyle County Industrial Foundation. The facility is operated by a cooperative effort from businesses and industry and is open 24-hours a day, seven days a week, to serve shift workers. The facility can accommodate 250 children per shift.

A highway improvement project was completed for Kentucky Route 34 from Danville to U.S. Highway 27. The project included construction of a new bridge and widening of the highway.

#### **Under Way**

Reconstruction of U.S. Highway 127 South from Danville to Liberty is under way. A U.S. 127 bypass around Danville was completed in 1992.

#### **Planned**

Centre College, located in Danville, has \$20 million of campus improvements planned. These improvements include; beautification of the College's park-like setting; construction of at least one new residence hall and new Greek houses in addition to the continued renovation of existing student housing facilities; construction of a new student center; renovation of Sutcliffe Hall into a total athletic facility; renovation of the Carnegie Library building; improve playing fields and construction of indoor tennis courts.

Implementation of the enhanced "911" emergency communications system is planned for Boyle County.

Construction of a new city park is being planned. The park will include the following: a public pool, four baseball fields, four softball fields, five tennis courts, a jogging/walking trail, shelters, five baseball courts, five soccer fields, two football fields, playgrounds, restrooms, and concession stands.



# KENTUCKY