

4-2000

Industrial Resources - Edmonson County

Kentucky Library Research Collections
Western Kentucky University, spcol@wku.edu

Follow this and additional works at: https://digitalcommons.wku.edu/edmonson_cty

 Part of the [Business Administration, Management, and Operations Commons](#), [Growth and Development Commons](#), and the [Infrastructure Commons](#)

Recommended Citation

Kentucky Library Research Collections, "Industrial Resources - Edmonson County" (2000). *Edmonson County*. Paper 1.
https://digitalcommons.wku.edu/edmonson_cty/1

This Report is brought to you for free and open access by TopSCHOLAR®. It has been accepted for inclusion in Edmonson County by an authorized administrator of TopSCHOLAR®. For more information, please contact topscholar@wku.edu.

Kentucky

Resources For Economic Development

Edmonson County

April 2000

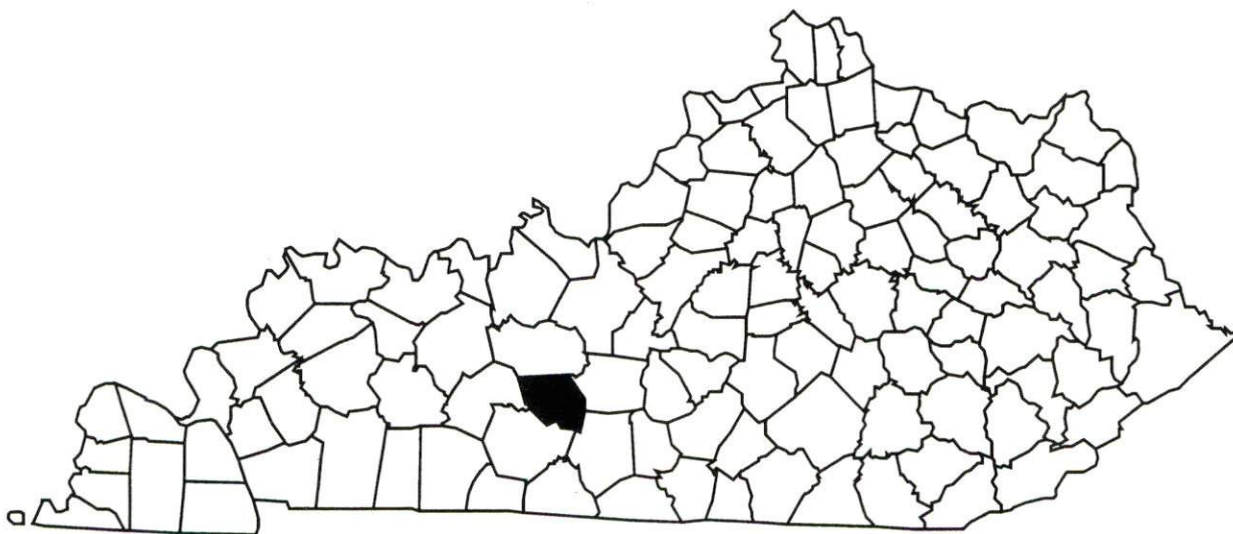
Albany
Barbourville
Ballard County
Bardstown • Booneville Berea
Bowling Green • Boyd & Greenup Counties
Bracken County • Brandenburg • Breckinridge
Brownsville • Bullitt County • Burkesville • Cadiz
Campbellsville • Campton • Carlisle • Carlisle County
Carrollton • Cave City • Clinton • Columbia • Corbin • Cynthiana
Danville • Dawson Springs • Edmonton • Elizabethtown • Estill County
Elliott County • Falmouth & Butler • Flemingsburg • Frankfort • Franklin
Frenchburg • Fulton County • Gallatin County • Georgetown • Grant County • Greensburg
Grayson & Olive Hill • Glasgow • Hancock County • Harlan County • Harrodsburg • Hart County
Hazard • Henderson • Henry County • Hodgenville • Hopkinsville-Christian County • Jackson County
Jackson • Knott County • LaGrange & Buckner • Lancaster • Lawrenceburg • Lebanon • Leitchfield-
Grayson County • Letcher County • Lexington • Liberty-Casey County • Logan County • Louisville
London • Louisa • Lyon County • Madisonville & Earlington • Manchester • Marshall County • Mayfield
Maysville • McCreary County • Marion • McLean County • Middlesboro & Pineville • Monticello • Morehead
Morgantown • Mt. Sterling • Mt. Vernon • Muhlenberg County • Murray • Nicholasville • Northern Kentucky
Ohio County • Owensboro • Owenton • Owingsville • Paducah • Paintsville • Paris • Pike County • Powell
Prestonsburg • Princeton • Radcliff • Richmond • Russell County • Scottsville • Shelbyville • Somerset
Springfield • Stamping Ground • Stanford-Lincoln County • Tompkinsville & Gamaliel • Taylorsville
Todd County • Union County • Vanceburg • Versailles • Webster County • West Liberty • Williamsburg
Winchester, Kentucky

Kentucky

Resources For Economic Development

Edmonson County

April 2000



Prepared by
Kentucky Cabinet for Economic Development
Division of Research
in cooperation with
Edmonson County Judge Executive
P. O. Box 353
Brownsville, KY 42210
Phone: 270-597-2819 Fax: 270-597-2494
E-mail: ecfc@kih.net

Kentucky Cabinet for Economic Development
Division of Research
500 Mero Street
2300 Capital Plaza Tower
Frankfort, KY 40601
Telephone: (502) 564-4886
Fax: (502) 564-3256
Email: econdev@mail.state.ky.us

Cost of printing paid from state funds.

TABLE OF CONTENTS

	Page
EDMONSON COUNTY, KENTUCKY – A RESOURCE PROFILE	1
LABOR MARKET STATISTICS	3
Population.....	3
Population Projections.....	3
Estimated Labor Supply	3
Labor Force Characteristics of Residents, 1998	4
Work Force Commuting Patterns, 1990	4
Selected Components of Nonagricultural Employment by Place of Work, 1997.....	4
Per Capita Personal Income.....	6
Average Placement Wages	6
Average Weekly Wages by Industry by Place of Work, 1998	7
EXISTING INDUSTRY	8
Edmonson County Manufacturing Firms, Their Products and Employment.....	8
Recent Industrial Developments.....	8
Labor Organizations in Edmonson County	8
Selected Industrial Services – Within 50 Miles of Brownsville	9
TRANSPORTATION.....	10
Highways.....	10
Truck Service	10
Rail	12
Air.....	12
UTILITIES	13
Electricity	13
Natural Gas.....	13
Public Water Supply.....	13
Sewerage	14
CLIMATE	15
LOCAL GOVERNMENT.....	16
Structure	16
Planning and Zoning.....	16
Local Fees and Licenses	16
Sales and Use Tax	16
State and Local Property Taxes	16
EDUCATION	18
Primary and Secondary Schools	18
Colleges and Technical Schools	18
OTHER LOCAL FACILITIES.....	21
RECREATION	22
APPENDIX - DEFINITIONS	23

EDMONSON COUNTY, KENTUCKY – A RESOURCE PROFILE

Brownsville, the county seat of Edmonson County, is a small community located at the western edge of the internationally renowned Mammoth Cave National Park. Brownsville, with an estimated 1998 population of 952, is located 22 miles northeast of Bowling Green, Kentucky; 86 miles northeast of Nashville, Tennessee; 96 miles southwest of Louisville, Kentucky; and 281 miles southeast of St. Louis, Missouri.

Edmonson County, with a land area of 302 square miles, is located in southcentral Kentucky, partly within the Western Coal Field Region and partly within the Mississippian Plateaus Region. Nearly 47,000 acres of Mammoth Cave lies beneath Edmonson County. Edmonson County, designated as a "Scenic Byways" area by the Department of Transportation, offers over 80 miles of scenic roads. Edmonson County had an estimated 1998 population of 11,353 persons.

The Economic Framework – Edmonson County firms employed 1,145 people in 1997. Contract construction firms provided 62 jobs; manufacturing firms in the county reported 19 employees; wholesale and retail trade provided 193 jobs; 359 were employed in the service industry; and state and local government accounted for 414 jobs.

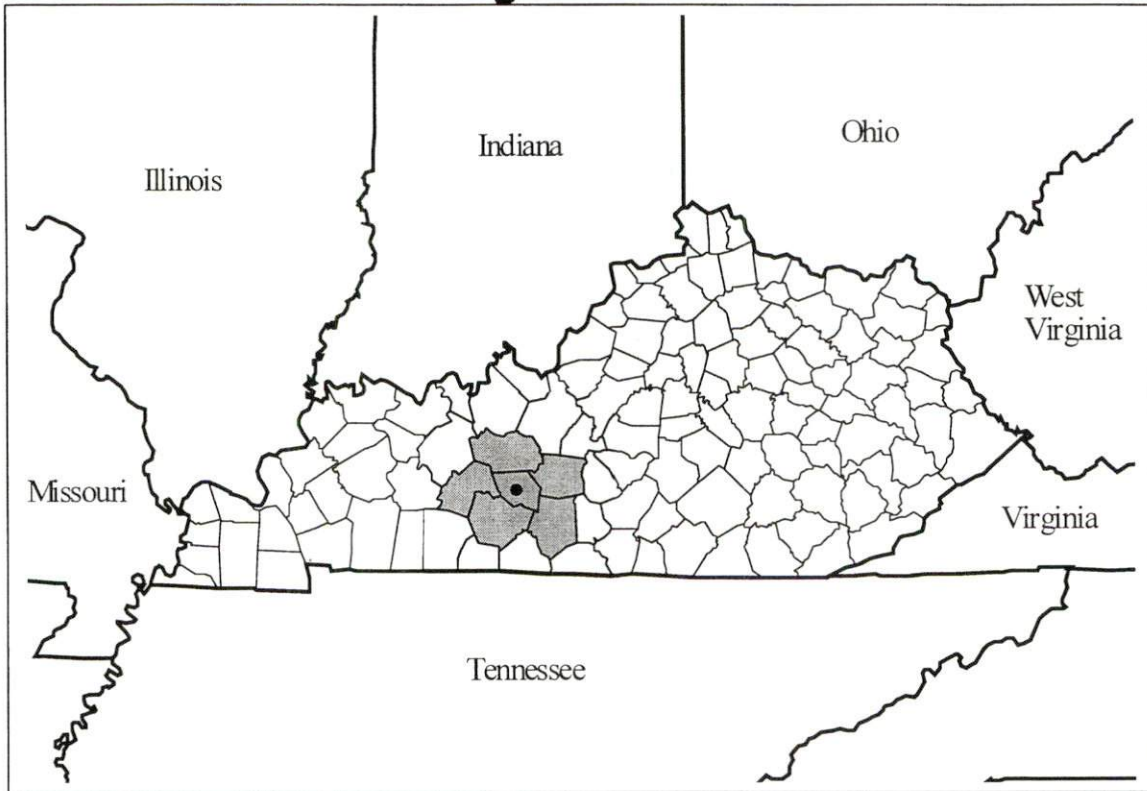
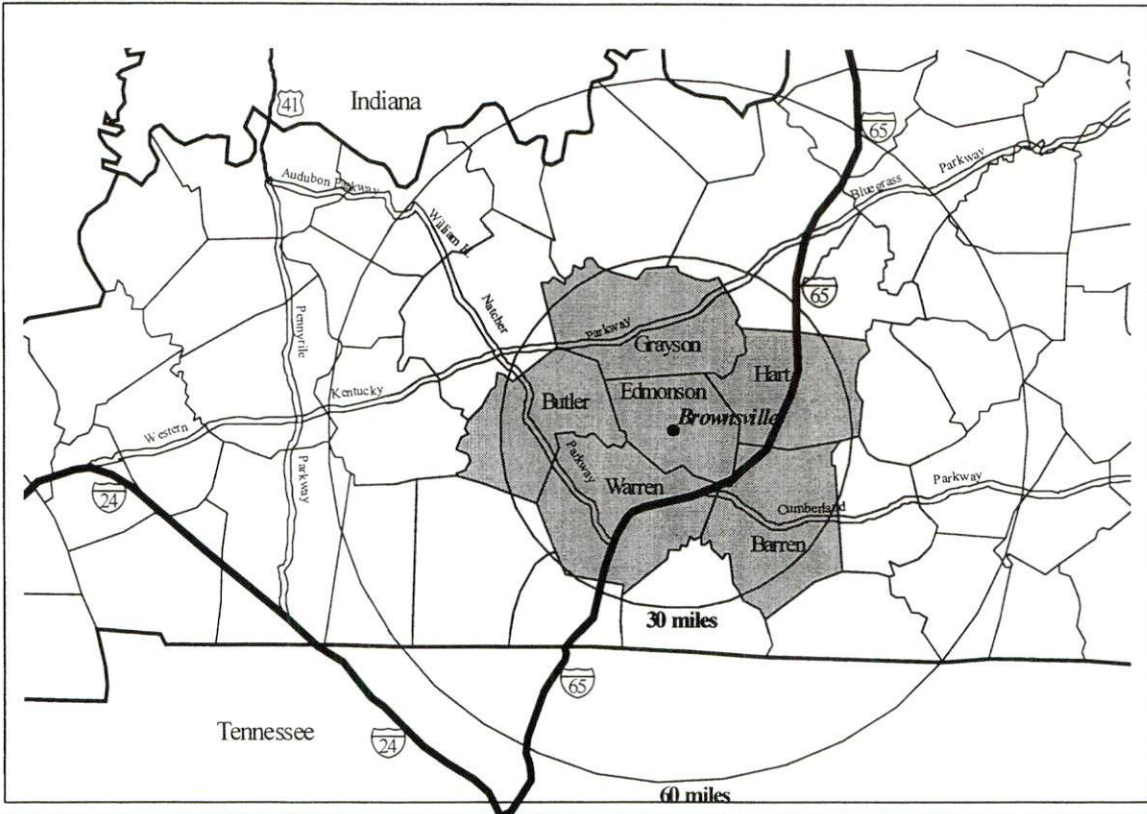
Labor Supply – There is a current estimated labor supply of 34,658 persons available for industrial jobs in the labor market area. In addition, from 2000 through 2004, approximately 13,337 young persons in the labor market area will become 18 years of age and potentially available for industrial jobs.

Transportation – Kentucky Highway 259, a AA-rated trucking highway, provides direct access from Brownsville to Interstate Highway 65, 15 miles southeast of Brownsville, and to the Western Kentucky Parkway, 24 miles north of Brownsville. Twelve trucking companies provide interstate and/or intrastate service to Brownsville. The nearest scheduled commercial airline service is available at the Louisville International Airport, 98 miles northeast and at the Nashville International Airport, 86 miles southwest of Brownsville near Nashville, Tennessee. CSX Transportation provides main line rail service at Cave City, 23 miles east of Brownsville. CSX Rail provides the southern boundary of the industrial park. There is also a CSX spur within five miles of the park at Rocky Hill, Kentucky.

Power and Fuel – Warren Rural Electric Cooperative Corporation provides electric power to Brownsville and parts of Edmonson County. A portion of eastern Edmonson County is provided electric power by Farmers Rural Electric Cooperative which is supplied by East Kentucky Power. Natural gas service is currently available at the industrial park but not in the city of Brownsville.

Education – The Edmonson County School System provides primary and secondary education in Edmonson County. Four institutions of higher learning are within 60 miles of Brownsville. Technical education is available at the Bowling Green Technical College and the Kentucky Advanced Technology Center in Bowling Green; at the Barren County Area Technology Center and the Bowling Green Technical College, Glasgow Campus in Glasgow; and at the Grayson County AVEC in Leitchfield.

Labor Market Area Maps



Note: To obtain detailed topographical and general highway maps contact Maps and Publications at 502-564-4715, or for industrial site maps contact the Site Evaluation Division at 502-564-7140.

LABOR MARKET STATISTICS

The Edmonson County labor market area includes Edmonson County and the following additional counties: Barren, Butler, Grayson, Hart, and Warren.

Population

	<u>1980</u>	<u>1990</u>	<u>1995*</u>	<u>1998*</u>
Labor Market Area	163,119	169,263	181,256	188,082
Edmonson County	9,962	10,357	11,008	11,353
Brownsville	674	897	917	952

Note: * Population estimates.

Source: U.S. Department of Commerce, Bureau of the Census.

Population Projections

	<u>2000</u>	<u>2010</u>	<u>2020</u>
Labor Market Area	192,738	207,385	216,188
Edmonson County	11,708	12,930	13,608

Source: University of Louisville, Urban Studies Center, State Data Center.

Estimated Labor Supply

	<u>Available Labor, 1998</u>			<u>Under- employed</u>	<u>Future Labor Becoming 18 years of age 2000 through 2004</u>
	<u>Total</u>	<u>Unemployed</u>	<u>Potential Labor Supply</u>		
Labor Market Area	34,658	4,768	3,005	26,886	13,337
Edmonson County	988	341	268	379	943

Note: Unemployed – people not working but actively seeking work. Potential Labor Supply – represents the number of persons not in the labor force, but would like a job (based on national estimates). Underemployed – people employed in wholesale/retail trade and non-professional services. See Appendix for further explanation.

Sources: U.S. Department of Labor, Bureau of Labor Statistics. U.S. Department of Commerce, Bureau of the Census. Kentucky Cabinet for Economic Development, Future Labor Supply Becoming 18 Years of Age, 1999 through 2003.

Labor Force Characteristics of Residents, 1998

	<u>Edmonson County</u>	<u>Labor Market Area</u>
Civilian Labor Force	4,888	98,614
Employed	4,547	93,846
Unemployed	341	4,768
Unemployment Rate (%)	7.0	4.8

Source: U.S. Department of Labor, Bureau of Labor Statistics.

Work Force Commuting Patterns, 1990

Workers commuting into Edmonson County	203
Workers commuting out of Edmonson County	2,094
Workers residing and working in Edmonson County	1,533

Source: University of Louisville, State Data Center.

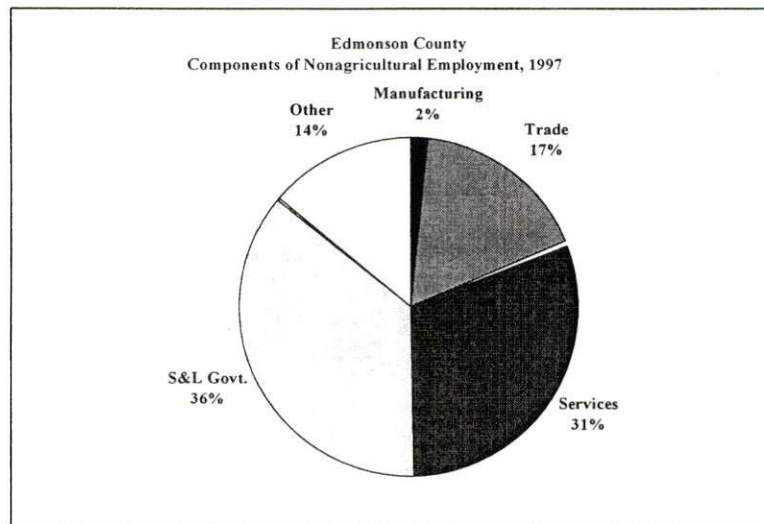
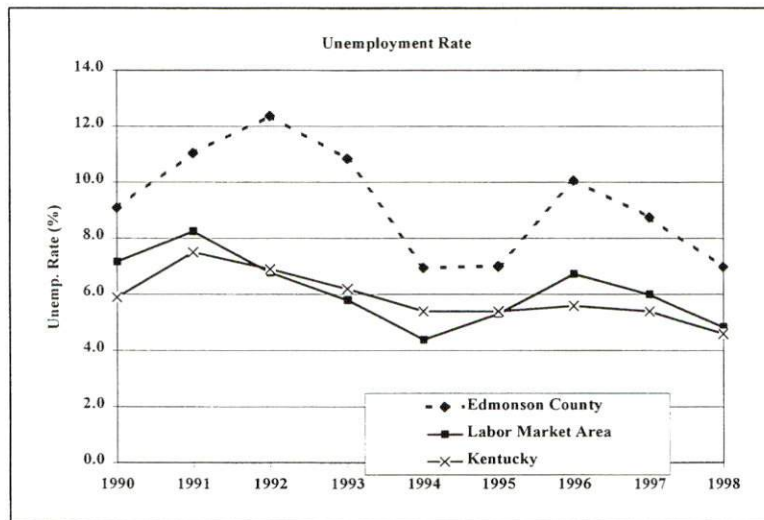
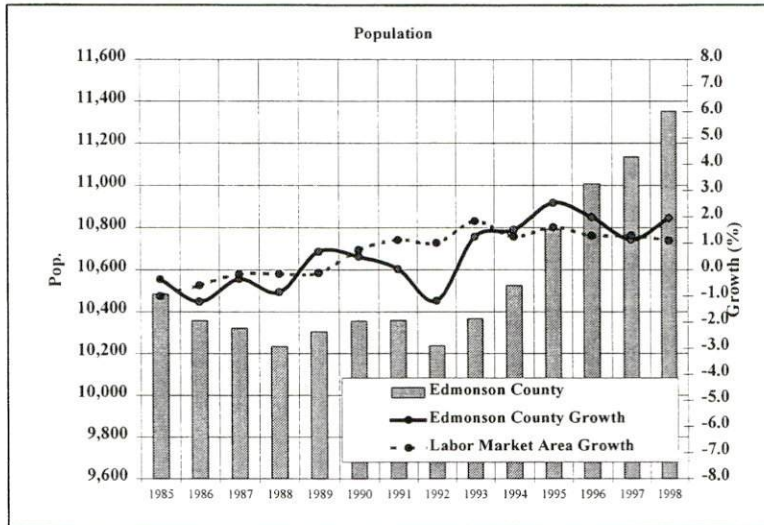
Selected Components of Nonagricultural Employment by Place of Work, 1997

	<u>Edmonson County</u>	<u>Labor Market Area</u>
All Industries	1,145	79,008
Mining & Quarrying	N/A	180
Contract Construction	62	4,257
Manufacturing	19	21,585
Transportation & Public Utilities	29	2,444
Wholesale & Retail Trade	193	20,027
Finance, Insurance, & Real Estate	63	2,862
Services	359	15,933
State & Local Government	414	11,073
Other	N/A	610

Note: Excludes domestic workers, railway workers, certain nonprofit corporations, majority of federal government workers, and self-employed workers. N/A – Data not available.

Source: Kentucky Workforce Development Cabinet, Average Monthly Workers Covered by Kentucky Unemployment Insurance Law, 1997.

Selected Charts



Per Capita Personal Income

	<u>1993</u>	<u>1997</u>	<u>Percent Change</u> <u>(1993-1997)</u>
Edmonson County	\$11,170	\$13,211	18.3%
Kentucky	\$17,309	\$20,570	18.8%
U.S.	\$21,368	\$25,288	18.3%
Labor Market Area Range	\$11,170 - \$18,169	\$13,211 - \$22,254	-

Source: U.S. Department of Commerce, Bureau of Economic Analysis, 1998.

Average Placement Wages

The Kentucky Department for Employment Services local office in Bowling Green serves Edmonson County. The focus of the following data is on job placements made by the Bowling Green local office and may therefore be used as an indicator of the wages which employers in the area pay new employees. During the twelve months ending June 30, 1999, the local employment office filled Edmonson County job openings in various occupational categories. The average hourly wage for selected occupational categories were:

	<u>Number of Placements</u>	<u>Average Wage (\$)</u>
All Occupations	2,755	7.43
Professional, Technical & Managerial	55	7.63
Clerical	230	7.71
Sales	90	7.82
Domestic	9	10.42
Services (excluding domestic)	429	5.51
Agricultural, Fishery, Forestry, etc.	12	8.09
Processing	32	6.70
Machine Trades	455	8.81
Bench Work	459	6.98
Structural	173	7.82
Motor Freight & Transportation	57	6.84
Packaging & Materials Handling	745	7.78
Other	9	6.01

Note: Occupational categories are taken from the Dictionary of Occupational Titles published by the U.S. Department of Labor. The Bowling Green local office serves Allen, Butler, Edmonson, Logan, Simpson, and Warre Counties.

Source: Kentucky Workforce Development Cabinet, Department for Employment Services.

Average Weekly Wages by Industry by Place of Work, 1998

	Edmonson County	Kentucky (Statewide)	Tennessee	Virginia
All Industries	\$341.69	\$512.00	\$546.00	\$595.00
Mining & Quarrying	N/A	808.00	896.00	799.00
Contract Construction	370.20	543.00	585.00	567.00
Manufacturing	171.18	666.00	641.00	670.00
Transportation & Public Utilities	360.65	686.00	674.00	842.00
Wholesale & Retail Trade	214.13	357.00	413.00	416.00
Finance, Insurance, & Real Estate	409.99	652.00	757.00	815.00
Services	277.30	462.00	521.00	628.00
State & Local Government	449.71	494.00	511.00	551.00
	Indiana	Ohio	Illinois	U.S.
All Industries	\$560.00	\$579.00	\$668.00	\$610.00
Mining & Quarrying	883.00	813.00	910.00	1,000.00
Contract Construction	642.00	650.00	804.00	641.00
Manufacturing	772.00	801.00	816.00	770.00
Transportation & Public Utilities	662.00	698.00	798.00	756.00
Wholesale & Retail Trade	371.00	409.00	479.00	435.00
Finance, Insurance, & Real Estate	686.00	736.00	1,023.00	935.00
Services	476.00	510.00	608.00	577.00
State & Local Government	526.00	586.00	638.00	598.00

Note: The average weekly wage for each category includes salaries and wages of all persons working for that type of business. For example, the manufacturing category includes both production workers and administrative personnel. Domestic workers, railway workers, certain nonprofit corporations, majority of federal government workers, and self-employed workers are excluded. Wages for U.S. and surrounding states rounded to nearest dollar. N/A – Data not available.

Sources: Kentucky Workforce Development Cabinet, Average Weekly Wages of Workers Covered by Kentucky Unemployment Insurance Law, 1998. U.S. Department of Labor, Bureau of Labor Statistics, Employment and Wages, Annual Averages, 1998, December 1999.

EXISTING INDUSTRY

Edmonson County Manufacturing Firms, Their Products and Employment

<u>Firm</u>	<u>Product(s)</u>	<u>1999 Emp.</u>	<u>Date Established</u>
<u>Brownsville</u>			
Edmonson News	Newspaper publishing, typesetting & printing	5	1927
Pride of Iowa	Sandwich factory	40	1998
Sun Valley Feed Mill, Inc.	Custom mixed animal feed	4	1971
<u>Roundhill</u>			
Dunaway Timber Co., Inc.	Rough cut lumber & railroad ties	10	N/A
<u>Sunfish</u>			
Farmers Custom Processing Plt.	Meat packing & custom processing: sausage & smoked meats	8	1984

Note: N/A - Data not available.

Sources: Kentucky Directory of Manufacturers published by Harris InfoSource in cooperation with the Kentucky Cabinet for Economic Development, Division of Research; Edmonson County Fiscal Court.

Recent Industrial Developments

In April 1999 water and sewer improvements were made at the Edmonson County Industrial Park for an investment of \$799,375.21. Components of the project included: 1,100 l.f. of 8-inch gravity sewer, 4,500 l.f. of 6-inch force main and pump station, 10,000 l.f. of 8-inch waterline and a 300,000-gallon elevated water tank.

Future projects at the industrial park include excavation and construction of a 32,000 square foot metal spec building with an expandable end wall. Construction of a 50-vehicle parking lot and a loading dock area is also planned.

Source: Edmonson County Fiscal Court.

Labor Organizations in Edmonson County

There are no unions representing manufacturing workers in Edmonson County.

Source: Kentucky Cabinet for Economic Development, Division of Research.

Selected Industrial Services – Within 50 Miles of Brownsville

Miles	City	Custom Plastics Producers	Electric Motor Repair	Heat Treating Facilities	Industrial Waste Removal	Machine Shops, Tool & Die	Metal Castings	Metal Finishers	Metal Service Centers	Mill- wrights & Riggers
18	Bowling Green	X				X	X		X	X
19	Horse Cave						X	X		
20	Leitchfield	X				X				
23	Glasgow		X		X	X				
28	Woodburn					X				
30	Scottsville					X				
34	Auburn	X	X							
36	Franklin	X				X				
39	Hartford							X		
39	McHenry					X				
41	Elizabethtown				X					
42	Greensburg		X							
43	Russellville				X		X			
46	Tompkinsville					X				
47	Radcliff	X								

Note: Miles are calculated as the straight-line distance from city center to city center; not road miles.

Source: Kentucky Cabinet for Economic Development, Division of Research.

TRANSPORTATION

Highways

Kentucky Highway 259, a AA-rated (62,000-pound gross load limit) trucking highway, serves Brownsville and provides access to Interstate 65, 15 miles southeast of Brownsville, and to the Western Kentucky Parkway, a multi-lane highway, 24 miles north of Brownsville. The Cumberland Parkway is accessible 20 miles southeast of Brownsville via Kentucky 259 and Interstate 65. Kentucky Highway 101 and U.S. Highway 31W serve the southeastern portion of Edmonson County.

Highway Miles from Brownsville, Kentucky to Selected Market Centers

<u>City</u>	<u>Highway Miles</u>	<u>City</u>	<u>Highway Miles</u>
Atlanta, GA	331	Indianapolis, IN	209
Baltimore, MD	677	Kansas City, MO	525
Birmingham, AL	277	Knoxville, TN	225
Charleston, WV	314	Lexington, KY	142
Chicago, IL	390	Louisville, KY	96
Cincinnati, OH	193	Minneapolis, MN	802
Cleveland, OH	445	Nashville, TN	86
Columbia, SC	486	New Orleans, LA	617
Columbus, OH	301	New York, NY	838
Dallas, TX	748	Pittsburgh, PA	488
Des Moines, IA	692	Raleigh, NC	586
Detroit, MI	457	Richmond, VA	631
Evansville, IN	111	St. Louis, MO	281
Huntington, WV	265	Tallahassee, FL	682

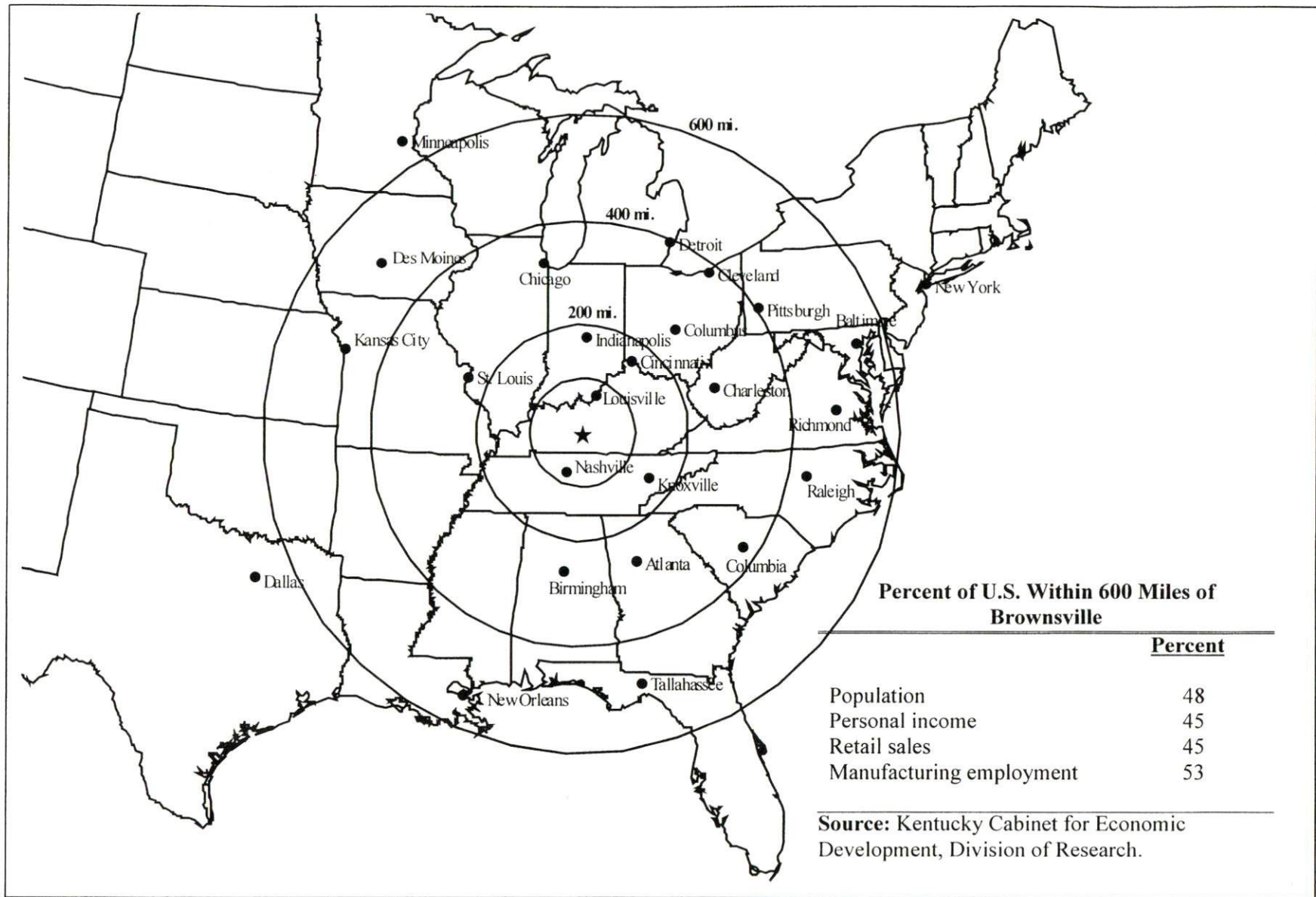
Note: Mileage computations are via the best interstate or primary highways, not necessarily the most direct route of travel.

Source: AAA Map 'n' Go, DeLORME, 1998.

Truck Service

Twelve firms provide interstate and/or intrastate trucking service to Brownsville. American Motor Carrier Directory, 2000 Edition.

Selected Market Centers Map



Percent of U.S. Within 600 Miles of Brownsville

	<u>Percent</u>
Population	48
Personal income	45
Retail sales	45
Manufacturing employment	53

Source: Kentucky Cabinet for Economic Development, Division of Research.

Rail

The nearest main line rail service is provided by CSX Transportation at Cave City, Kentucky, 23 miles east of Brownsville. Intermodal facilities are available in Nashville, Tennessee, 86 miles southwest.

For details on routing, schedules, rates, and services contact:

Manager of Industrial Development
CSX Transportation
9420 Bunsen Parkway
Suite 212
Louisville, KY 40220
(502) 499-3025

Air

Commercial/International

Louisville International Airport

Location: Louisville, KY
Distance from Brownsville: 98 miles northeast
Phone: (502) 368-6524
Air service: American, ASA, Comair, Continental, Continental Express, Delta, Delta Express, Northwest, Northwest Airlink, Skyway, Southwest, TWA, United, United Express, US Airways, US Airways Express
Daily arrivals & departures: 182

Nashville International Airport

Location: Nashville, TN
Distance from Brownsville: 86 miles southwest
Phone: (615) 275-1600
Air service: Air Canada, American, American Eagle, Comair, Continental, Corporate Express, Delta, Delta Express, Midway Connection, Northwest, Skyway, Southwest, TWA, United, US Airways, US Airways Express, Trans States
Daily arrivals & departures: 364

UTILITIES

Electricity

Service area: **Brownsville and most of Edmonson County**
Company: Warren Rural Electric Cooperative Corporation
Source of power: Tennessee Valley Authority
For industrial rates contact:

Warren Rural Electric Cooperative Corporation
951 Fairview Avenue
P.O. Box 1118
Bowling Green, KY 42102
(270) 842-6541

and/or

South Kentucky Industrial Development Association, Inc. (TVA)
Manager of Economic Development
P.O. Box 726
Hopkinsville, KY 42241-0726
(270) 885-5392

Service area: **small portion of eastern Edmonson County**
Company: Farmers Rural Electric Cooperative Corporation
Source of power: East Kentucky Power
For industrial rates contact:

East Kentucky Power
P. O. Box 707
Winchester, KY 40392-0707
(606) 744-4812

and/or

Farmers Rural Electric Cooperative Corporation
504 South Broadway
P. O. Box 1298
Glasgow, KY 42142-1298
(270) 651-2191

Natural Gas

Natural gas is available at the industrial park but not in Brownsville.

Public Water Supply

Service area: **Brownsville**
Company: City of Brownsville
P. O. Box 238
Brownsville, KY 42210
(270) 773-2887

Treatment facilities information:

Source of treated water: Edmonson County Water District
Amount that can be purchased: 1,200,000 gallons per day
Average daily consumption: 96,400 gallons
Peak daily consumption: 99,774 gallons
Storage capacity: 200,000 gallons, with access to 1,000,000 gallons
Water pressure: 70 psi to 95 psi

Service area:

Edmonson County and parts of Hart, Grayson, and Warren counties

Company:

Edmonson County Water District
1128 Highway 259N
P. O. Box 208
Brownsville, KY 42210
(270) 597-2165

Treatment facilities information:

Source of raw water: Green River and Nolin Lake
Treatment plant capacity: 2,000,000 gallons per day
Average daily consumption: 1,464,995 gallons
Peak daily consumption: 2,156,340 gallons
Storage capacity: 1,970,000 gallons
Water pressure: 35 psi to 135 psi

Improvements:

The water district is in the process of upgrading the water treatment plant, replacing distribution lines, and constructing a 100,000-gallon storage tank for an investment of about \$4.3 million.

Sewerage

Service area:

Brownsville

Company:

City of Brownsville
P. O. Box 238
Brownsville, KY 42210
(270) 597-3814

Design capacity: 218,278 gallons per day
Average daily flow: 56,000 gallons
Type of treatment: Primary
Treated effluent discharged into: Green River

Service area:

a portion of Edmonson County

Company:

Caveland Sanitation Authority
P. O. Box 463
Cave City, KY 42127
(270) 773-2887

Design capacity: 600,000 gallons per day
Average daily flow: 240,000 gallons
Type of treatment: Secondary
Treated effluent discharged into: Green River

CLIMATE

Edmonson County

Temperature

Normal (116-year record)	55.2 degrees
Average annual, 1999	56.7 degrees
Record highest, July 1988 (55-year record)	103 degrees
Record lowest, January 1963 (55-year record)	-21 degrees
Normal heating degree days (30-year record)	4,783
Normal cooling degree days (30-year record)	1,140

Precipitation

Normal (30-year record)	44.55 inches
Mean annual snowfall (30-year record)	17.5 inches
Total precipitation, 1999	31.87 inches
Mean number days precipitation (0.01 inch or more) (30-year record)	129.1
Mean number days thunderstorms (55-year record)	43.5

Prevailing Winds (28-year record) South

Relative Humidity (30-year record)

1 a.m.	76 percent
7 a.m.	80 percent
1 p.m.	68 percent
7 p.m.	70 percent

Notes: Heating degree day totals are the sums of negative departures of average daily temperatures from 65 degrees F. Cooling degree day totals are the sums of positive departures of average daily temperatures from 65 degrees F.

Source: U.S. Department of Commerce, National Climatic Data Center, Local Climatological Data, 1999.
Station of record: Lexington, Kentucky.

LOCAL GOVERNMENT

Structure

The City of Brownsville is governed by a mayor and six council members. The mayor is elected to a four-year term while the council members each serve two-year terms. Edmonson County is governed by a county judge/executive and six magistrates. Each county official serves a four-year term.

Planning and Zoning

Brownsville/Edmonson County Planning and Zoning Commission.

Mandatory state codes enforced - Kentucky Plumbing Code, National Electric Code, Kentucky Boiler Regulations and Standards, Kentucky Building Code (modeled after BOCA code)

Local Fees and Licenses

The City of Brownsville levies a one percent occupational license tax on wages, salaries and commissions of individuals and on net profits of businesses. Brownsville also levies a \$25 annual unloading license fee.

Sales and Use Tax

A state sales and use tax is levied at the rate of 6.0% on the purchase or lease price of taxable goods and on utility services. Local sales taxes are not levied in Kentucky.

State and Local Property Taxes

The Kentucky Constitution requires the state to tax all classes of taxable property, and state statutes allow local jurisdictions to tax only a few classes. All locally taxed property is subject to county taxes and school district taxes (either a county school district or an independent school district). Property located inside the city limits may also be subject to city property taxes. Property assessments in Kentucky are at 100% fair cash value. Accounts receivable are taxed at 85% of face value. Special local taxing jurisdictions (fire protection districts, watershed districts, and sanitation districts) levy taxes within their operating areas (usually a small portion of community or county).

State Property Tax Rates Per \$100 Valuation

<u>Selected Classes of Property</u>	<u>State Rate, 1999</u>	<u>Local Taxation Permitted</u>
Real Estate	\$0.148	Yes
Manufacturing Machinery	0.150	No
Pollution Control Equipment	0.150	No
Inventories:		
Raw Materials	0.050	No
Goods in Process	0.050	No
Finished Goods	0.050	Yes
Motor Vehicles	0.450	Yes
Other Tangible Personal Property	0.450	Yes
Intangibles (Accounts Receivable, Money on Hand)	0.250	No

Source: Property Tax Rates 1999, Kentucky Revenue Cabinet, Department of Property Valuation.

Local Property Tax Rates Per \$100 Valuation, 1999

<u>Taxing Jurisdiction</u>	<u>Real Estate</u>	<u>Finished Goods & Tangibles</u>	<u>Motor Vehicles</u>
<u>County</u>			
Edmonson County	0.1850	0.3090	0.3060
<u>City</u>			
Brownsville	0.0970	0.0970	0.1300
<u>School District</u>			
Edmonson County	0.3800	0.3800	0.5030

Source: Property Tax Rates 1999, Kentucky Revenue Cabinet, Department of Property Valuation.

EDUCATION

Primary and Secondary Schools

Public School District Enrollments and Expenditures, 1999-2000

	<u>Total Enrollment</u>	<u>Expenditures Per Pupil</u>	<u>Pupil to Teacher Ratio</u>
Edmonson County	1,880	5,392	18.5

Source: Edmonson County Fiscal Court.

Transition to Adult Life of High School Graduates, 1998-99

<u>County-wide</u>	<u>Number of Graduates</u>	<u>Percent of Total Graduates (%)</u>
Total High School Graduates	142	
To College	48	33.8
To Vocational/Technical School	10	7.0
To Workforce	67	47.2
To Work & School	4	2.8
To Military	4	2.8
Other	9	6.3

Source: Edmonson County Fiscal Court.

Colleges and Technical Schools

Area Colleges and Universities Within 60 Miles of Brownsville

<u>Miles</u>	<u>Institution</u>	<u>Location</u>	<u>Enrollment (Fall 1999)</u>
18	Western Kentucky University	Bowling Green	14,543
41	Elizabethtown Community College	Elizabethtown	3,595
51	Campbellsville College	Campbellsville	1,583
53	Lindsey Wilson College	Columbia	1,425
Total Enrollment			21,146

Note: Miles are calculated as the straight-line distance from Brownsville, not road miles.

Source: Kentucky Council on Higher Education.

Kentucky Technical Schools Within 60 Miles of Brownsville

<u>Miles</u>	<u>Institution</u>	<u>Location</u>	<u>Enrollment (1997-98)</u>		
			<u>Sec</u>	<u>P/S</u>	<u>Total</u>
18	Bowling Green Technical College	Bowling Green	143	877	1,020
18	KY Advanced Technology Center	Bowling Green	0	309	309
20	Grayson County Area Vocational Education Center	Leitchfield	400	0	400
23	Barren County ATC	Glasgow	561	7	568
23	Bowling Green Technical College Glasgow Campus	Glasgow	0	207	207
30	Allen County Area Vocational Education Center	Scottsville	422	0	422
39	Breckinridge County ATC	Harned	572	2	574
39	Ohio County ATC	Hartford	673	23	696
41	Elizabethtown Technical College	Elizabethtown	47	662	709
42	Green County ATC	Greensburg	531	11	542
43	Russellville ATC	Russellville	543	6	549
46	Monroe County ATC	Tompkinsville	680	2	682
51	Muhlenberg County ATC	Greenville	142	57	199
56	Meade County ATC	Brandenburg	337	2	339
Total Enrollment			5,051	2,165	7,216

Notes: Kentucky Tech secondary schools (Sec), called area technology centers (ATC), are operated by the Cabinet for Workforce Development and the post-secondary schools (P/S), called technical colleges, are governed by the Kentucky Community and Technical College System (KCTCS). Adult courses may be offered at some secondary technical schools. Miles are calculated as the straight-line distance from Brownsville, not road miles.

Source: Kentucky Workforce Development Cabinet, KCTCS.

Customized Training

The Kentucky Tech system, through its training and development coordinators, will provide technical assistance and will identify and develop low-cost customized training programs and services for both established and prospective businesses. Businesses wanting to establish a customized training program should contact a Training and Development Coordinator at the Bowling Green Technical College (270) 746-7461.

Assessment Services

Kentucky Tech Career Connections offers business, education, and government agencies testing packages for evaluating job applicants, selecting employees for promotional consideration and developing training programs within the organization. The Career Connections Assessment Center serving the Edmonson County area is located at the Bowling Green Technical College (270) 746-7461.

Adult Education Services

Adult education programs are available to adults who want to develop new academic skills, improve basic skills, or earn a high school equivalency diploma. In the Edmonson County area, adult basic education and adult literacy classes are administered through the Edmonson County Literacy Council.

The Bowling Green Technical College and the Barren County Area Technology Center offer tech prep programs in the areas of automotive, carpentry, drafting, electronics, food service, graphic communication, machine/tool, retailing, welding, and business technology.

Bluegrass State Skills Corporation

The Bluegrass State Skills Corporation (BSSC) was established in 1984 by the General Assembly of the Commonwealth of Kentucky as an independent, de jure corporation to stimulate economic development through customized business and industry specific skills training programs. The BSSC works with business and industry and Kentucky's educational institutions to establish programs of skills training. The BSSC is attached to the Cabinet for Economic Development for administrative purposes, in recognition of the relationship between economic development and skills training efforts.

The BSSC is comprised of two economic development tools, matching grants and the newly authorized Skills Training Investment Credit Act. The BSSC grant program is available to new, expanding and existing business and industry. Eligible training activities include pre-employment skills training and assessment; entry level, skills upgrade and occupational upgrade training; train-the-trainer travel; and capacity-building. The Skills Training Investment Credit Act provides tax credits to existing businesses for skills upgrade training.

OTHER LOCAL FACILITIES

Local Medical Personnel

Physicians - 4

Dentists - 2

Hospitals

<u>General Hospital</u>	<u>Location</u>	<u>Beds</u>
Twin Lakes Regional Medical Center	Leitchfield, 25 miles north	75
Greenview Regional Hospital	Bowling Green, 22 miles south	211
The Medical Center	Bowling Green, 22 miles south	388

Other Medical Facilities and Services

Edmonson County Ambulance Service

Edmonson County Health Department

Edmonson County Health Care Center

Edmonson Health Care Center

Banks and Savings & Loan Associations

Bank of Edmonson County

Brownsville Deposit Bank

Newspapers

Edmonson News (weekly)

Telephone Service

GTE

RECREATION

Edmonson County has been designated a "Scenic Byways" area by the Department of Transportation and offers over 80 miles of scenic roads and beautiful scenery.

The Edmonson County Community Center in Brownsville provides facilities for year-round activities. The county park provides three lighted baseball/softball fields. The Brownsville City Park, located along the Green River, offers picnic areas, campsites, a shelter house, restroom facilities, and a boat ramp.

Other recreational facilities include a playground, a football field, the Baptist Church Camp, fairgrounds, and a private 18-hole golf course located in northern Edmonson County. The Seven Springs Park, in southern Edmonson County includes a campground, picnic areas, swimming, fishing and hiking.

The Edmonson County Arts Council constructed an amphitheater at the Green River City Park. The outdoor drama "The Death of Floyd Collins" is presented there on Friday and Saturday nights June through early September.

Mammoth Cave National Park is located 14 miles east of Brownsville near Cave City. Beneath 52,830 park acres, Mammoth Cave is the longest cave system ever discovered on earth, with over 350 miles charted. A large variety of recreational activities are offered in the Mammoth Cave area. Some activities include cave tours, horseback riding, camping, hiking, ranger-led activities, and scenic boat trips. Park accommodations include a hotel with a gift shop, dining room, motor lodge, hotel cottages, and woodland cottages. The park is open for tours every day of the year except Christmas Day.

Nolin Lake State Park is just north of Mammoth Cave National Park. Recreational activities include fishing, boating, and camping.

Park Mammoth Resort offers two 18-hole championship golf courses, golf tournaments, convention facilities, tennis courts, miniature golf, horseback riding, train rides, an indoor pool, historic lodge, and excellent dining. The resort is approximately ten miles from Mammoth Cave National Park.

Barren River Lake State Resort Park, 43 miles south of Brownsville near Glasgow, is a full-facility resort park offering a 51-room resort lodge and cottages. Barren River Lake, covering 10,000 acres, is a popular area for skiing, sailing, fishing, and swimming.

Area (within 70 miles)

Abraham Lincoln Birthplace National Historic Site (Hodgenville)
American Cave Museum and Cave and Karst Center (Horse Cave)
Lake Malone State Park (Dunmor)
National Corvette Museum (10 miles from Edmonson County)
Old Mulkey Meeting House State Historic Site (Tompkinsville)

APPENDIX - DEFINITIONS

Geographic definition of the labor market area

A county's labor market area is defined as the base county, adjacent counties, and any other major commuting counties. Adjacency is used to define the labor market area primarily because of the small size of Kentucky's counties. The major commuting counties are defined from the point of view of the base county. Major commuting counties are those counties that comprise 90% of the base county's total commuters. The source of the commuting patterns is the 1990 journey-to-work data available from the U.S. Department of Commerce, Bureau of Economic Analysis.

Example – Logan County

To determine the labor market area for Logan County the following steps are taken. First, the counties with workers commuting into Logan county are listed in ascending order (see the table below). The cumulative percent is calculated. Next, all counties that comprise up to 90% of the commuters are included in the labor market area (actually the cut-off will be the county that breaks the 90% threshold – Montgomery County, TN at 92.6% in this case). Although Robertson is not a major commuter county, it is included since it is adjacent. The Logan County labor market is then comprised of the seven bold-faced counties in the table below.

Labor Market Area – Logan County (Example Only)				
<u>Adjacent to Logan</u>	<u>Commuter County</u>	<u>Commuters into Logan</u>	<u>Percent of Total Commuters</u>	<u>Cumulative Percent</u>
Y	Todd	385	24.4%	24.4%
Y	Warren	377	23.9	48.4
Y	Muhlenberg	365	23.2	71.5
Y	Simpson	162	10.3	81.8
Y	Butler	116	7.4	89.1
	Montgomery, TN	55	3.5	92.6
	Christian	36	2.3	94.9
	Sumner, TN	35	2.2	97.1
Y	Robertson, TN	25	1.6	98.7
	Davidson, TN	20	1.3	100.0
	<i>Total Commuters into Logan County</i>	<i>1,576</i>	<i>100.0</i>	

Source: U.S. Department of Commerce, Bureau of Economic Analysis. Regional Economic Information System, CD-ROM. August 1997.

Potential Labor Supply

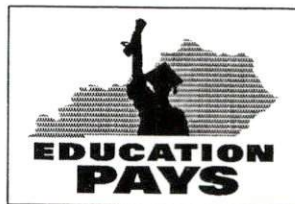
The potential labor supply is an estimate of those persons not classified as in the labor force (not employed and not unemployed), but who want a job. The assumption is that people not in the labor force at the local level would like a job at the same rate as the nation. The U.S. Department of Labor, Bureau of Labor Statistics provides national, yearly estimates of the percent of the people not in the labor force who want a job. This percent is applied to the county-level number of people not in the labor force.

Underemployed

Wholesale/retail trade and non-professional services have historically paid low wages. The assumption is that workers in these industries would take higher paying jobs if they were available. Non-professional services excludes Miscellaneous Repair Services (SIC 7600), Health Services (SIC 8000), Legal Services (SIC 8100), and Engineering and Management Services (SIC 8700).

Total Available Labor

Total available labor is the sum of the number of unemployed, potential labor supply, and underemployed. Please note that the number of unemployed is the only generally accepted measure of labor availability. The other concepts are weaker measures and should be used with caution.



Kentucky

Cabinet For Economic Development

2300 Capital Plaza Tower, 500 Mero Street, Frankfort, KY 40601, 502 • 564 • 7140



Printed on recycled paper.