

1977

# Industrial Resources: Anderson County

Kentucky Library Research Collections  
Western Kentucky University, [spcol@wku.edu](mailto:spcol@wku.edu)

Follow this and additional works at: [https://digitalcommons.wku.edu/anderson\\_cty](https://digitalcommons.wku.edu/anderson_cty)

 Part of the [Business Administration, Management, and Operations Commons](#), [Growth and Development Commons](#), and the [Infrastructure Commons](#)

---

## Recommended Citation

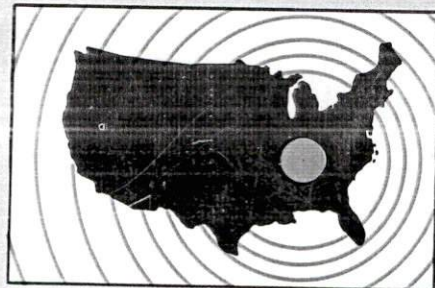
Kentucky Library Research Collections, "Industrial Resources: Anderson County" (1977). *Anderson County*. Paper 13.  
[https://digitalcommons.wku.edu/anderson\\_cty/13](https://digitalcommons.wku.edu/anderson_cty/13)

This Report is brought to you for free and open access by TopSCHOLAR®. It has been accepted for inclusion in Anderson County by an authorized administrator of TopSCHOLAR®. For more information, please contact [topscholar@wku.edu](mailto:topscholar@wku.edu).

# ***INDUSTRIAL RESOURCES***

## **LAWRENCEBURG**

***Kentucky  
first***

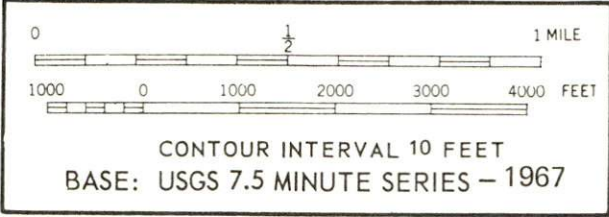
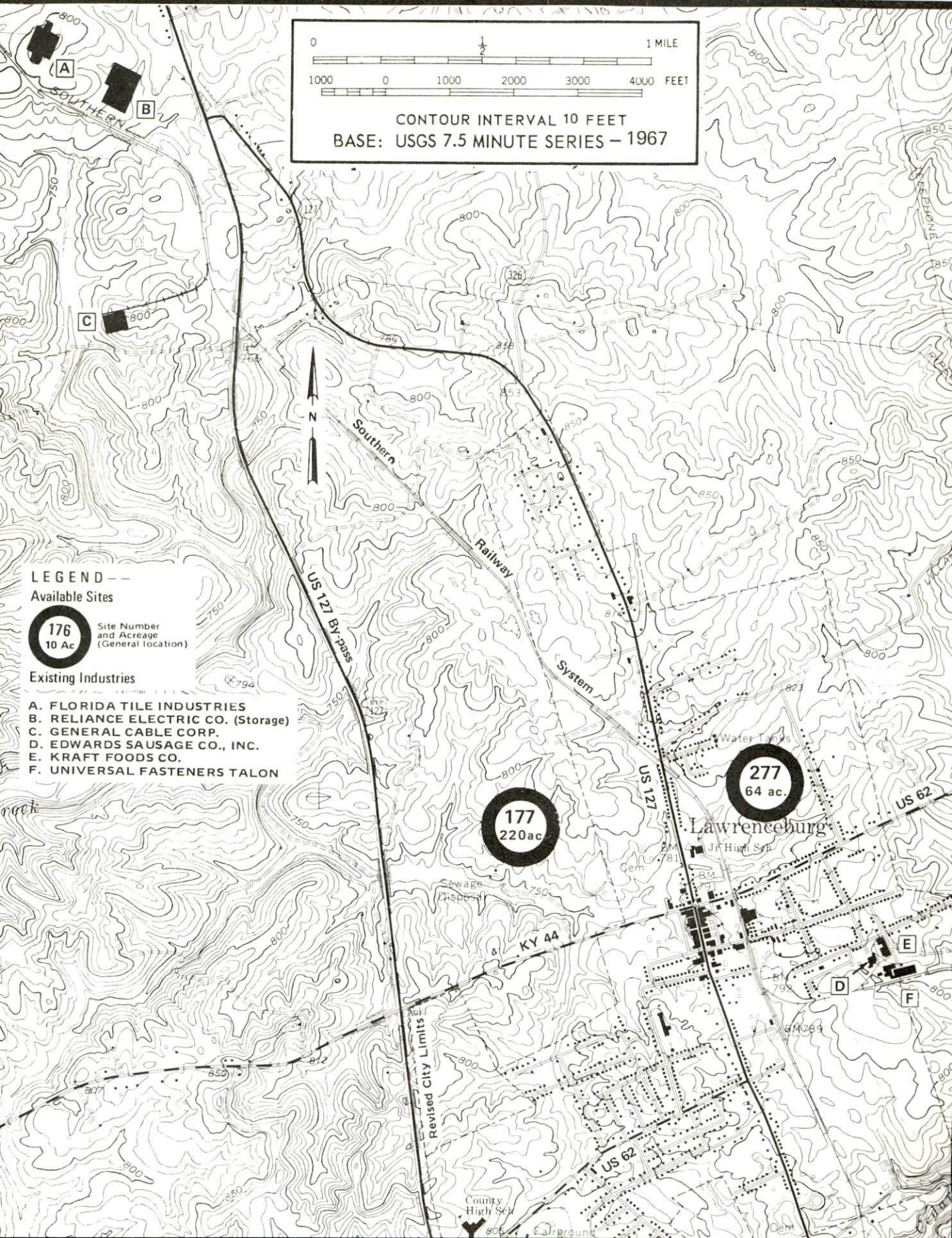


**DEPARTMENT OF COMMERCE**



# LAWRENCEBURG, KENTUCKY --- Index to Industrial Sites --- 1977

For detailed data on individual sites, contact Mayor Kenneth Hoskins, City Hall, Lawrenceburg, Kentucky 40342, or the Industrial Development Division, Kentucky Department of Commerce, Capital Plaza Tower, Frankfort, Kentucky 40601.



## LEGEND --

### Available Sites

**176**  
10 Ac  
Site Number and Acreage (General location)

### Existing Industries

- A. FLORIDA TILE INDUSTRIES
- B. RELIANCE ELECTRIC CO. (Storage)
- C. GENERAL CABLE CORP.
- D. EDWARDS SAUSAGE CO., INC.
- E. KRAFT FOODS CO.
- F. UNIVERSAL FASTENERS TALON

**177**  
220 ac

**277**  
64 ac



INDUSTRIAL RESOURCES  
LAWRENCEBURG, KENTUCKY

Prepared by  
The Kentucky Department of Commerce  
Division of Research and Planning  
in cooperation with  
The Anderson County Chamber of Commerce

1977



Production supervisor: Patsy Wallace; research: Craig Turner;  
clerical: Edna Beard; graphics: N. C. Montague, Frank Ferrante,  
Tony Cecconi, Richard Spencer; cartography: Industrial Development  
Division. Cost of printing paid from state funds.

## TABLE OF CONTENTS

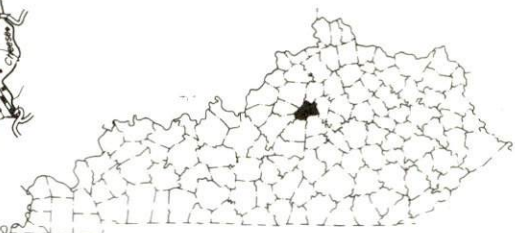
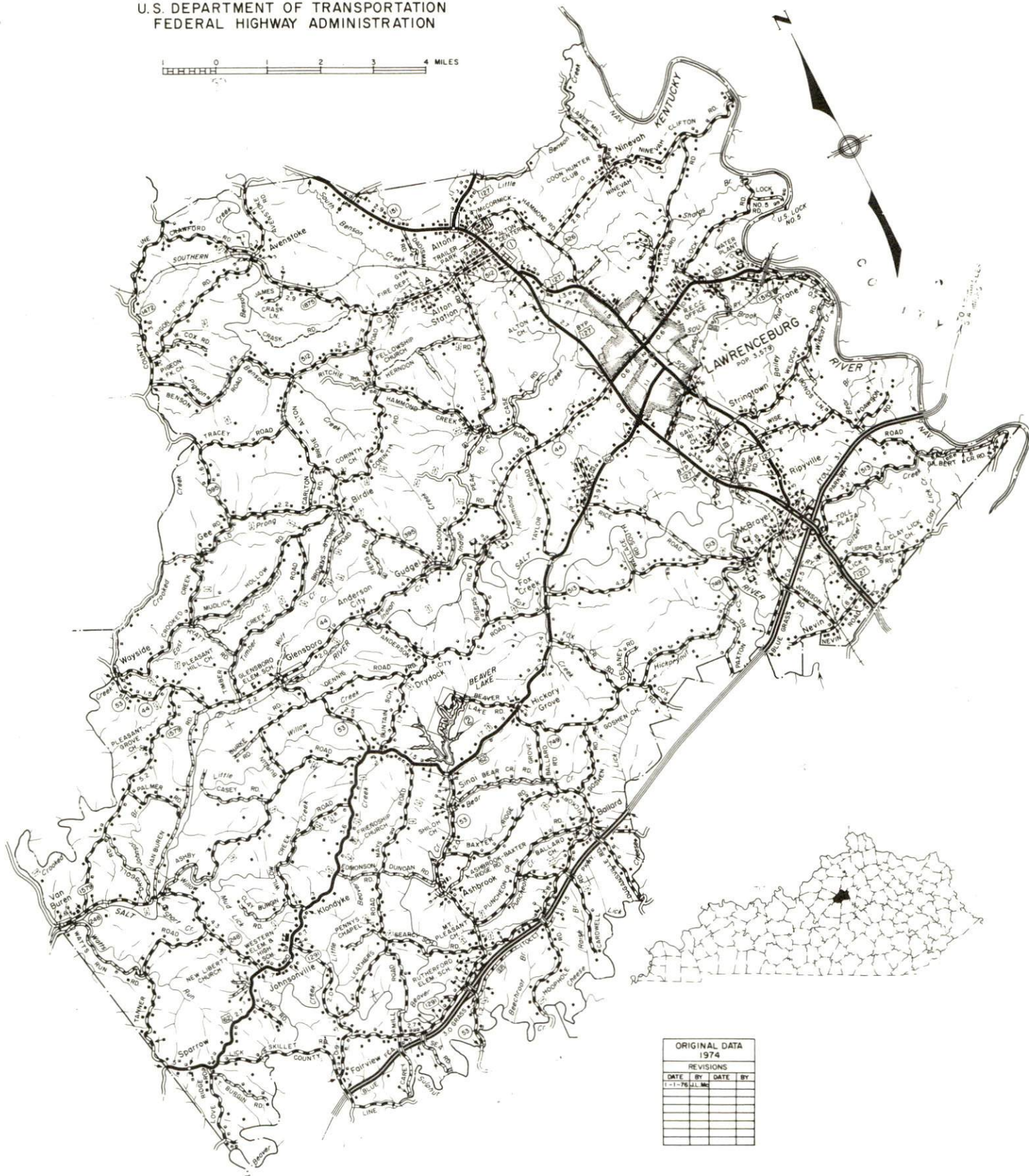
<u>Chapter</u>	<u>Page</u>
INDUSTRIAL SITES . . . . .	i
LAWRENCEBURG, KENTUCKY - A RESOURCE PROFILE. . . . .	1
THE LABOR MARKET AREA . . . . .	3
Population . . . . .	3
Labor Force Characteristics of Residents, 1975 . . . . .	3
Nonagricultural Employment by Industry, by Place of Work, 1975 . . . . .	4
Lawrenceburg Manufacturing Firms, Their Products and Employment . . . . .	5
Labor Organizations . . . . .	6
Estimated Male Labor Supply . . . . .	9
Estimated Female Labor Supply . . . . .	9
Average Weekly Wages by Industry, by Place of Work, 1975 . . . . .	10
Per Capita Personal Income . . . . .	12
TRANSPORTATION . . . . .	13
Rail . . . . .	13
Highways . . . . .	13
Truck Service . . . . .	14
Air . . . . .	15
Bus . . . . .	15
Taxi . . . . .	15
Rental Services . . . . .	15
POWER AND FUEL . . . . .	16
Electricity . . . . .	16
Natural Gas . . . . .	16
Other Fuels . . . . .	17
WATER AND SEWERAGE . . . . .	18
Water . . . . .	18
Sewerage . . . . .	20
CLIMATE . . . . .	21



<u>Chapter</u>	<u>Page</u>
LOCAL GOVERNMENT . . . . .	22
City . . . . .	22
County . . . . .	22
Assessed Value of Property, 1976 . . . . .	22
Property Taxes . . . . .	22
Local Property Tax Rate Per \$100 of Assessed Valuation, 1976 . . . . .	23
Planning and Zoning . . . . .	23
Safety . . . . .	23
Police . . . . .	23
Fire . . . . .	23
Rescue Service . . . . .	23
Solid Waste . . . . .	24
EDUCATION . . . . .	25
Public Schools . . . . .	25
Area Colleges and Universities . . . . .	27
Vocational Schools . . . . .	28
HEALTH . . . . .	29
Local Medical Personnel . . . . .	29
Hospitals . . . . .	29
Ambulance Service . . . . .	29
Public Health . . . . .	29
OTHER LOCAL FACILITIES . . . . .	30
Communications . . . . .	30
Library Services . . . . .	30
Religious Institutions . . . . .	30
Financial Institutions . . . . .	31
Hotels and Motels . . . . .	31
Clubs and Organizations . . . . .	31
RECREATION . . . . .	32
COMMUNITY IMPROVEMENTS . . . . .	33

# GENERAL HIGHWAY MAP ANDERSON COUNTY KENTUCKY

PREPARED BY THE  
**KENTUCKY DEPARTMENT OF TRANSPORTATION**  
**OFFICE OF TRANSPORTATION PLANNING**  
**DIVISION OF FACILITIES PLANNING**  
 IN COOPERATION WITH THE  
**U.S. DEPARTMENT OF TRANSPORTATION**  
**FEDERAL HIGHWAY ADMINISTRATION**



ORIGINAL DATA			
1974			
REVISIONS			
DATE	BY	DATE	BY
1-17-74	FWL		





## LAWRENCEBURG, KENTUCKY - A RESOURCE PROFILE

Lawrenceburg, the county seat of Anderson County, is located in the Bluegrass Region of central Kentucky. Its location is in an area that offers many historic and scenic sites. Lawrenceburg is situated 55 miles east of Louisville, Kentucky, 23 miles west of Lexington, Kentucky, and 101 miles southwest of Cincinnati, Ohio. The estimated population of Lawrenceburg in 1973 was 3,977.

Anderson County, which covers a land area of 206 square miles, had a 1975 estimated population of 10,800.

### The Economic Framework

The total number of Anderson county residents employed in 1975 averaged 4,840, with nonagricultural jobs accounting for 4,370 workers. Manufacturing employers in the county reported 890 workers; construction firms 55; transportation, communications, and public utilities 150; wholesale and retail trade 430; finance, insurance, and real estate 55; and employees in the service industries 240. Major industrial products are wall tile, apparel fasteners, distilled spirits, and telephone cable.

Total unemployment in Anderson county averaged 6.8 percent of the labor force in 1975.

Per capita personal income in the county in 1974 was \$4,339, an increase of 35.9 percent since 1970.

The Lawrenceburg labor market area includes Anderson and the seven adjoining counties. The total number of residents of the labor market area employed in 1975 averaged 59,940, with nonagricultural jobs accounting for 52,045 workers. Manufacturing employers in the area reported 11,255 workers; mining and quarrying 80; construction firms 1,750; transportation, communications, and public utilities 1,460; wholesale and retail trade 7,270; finance, insurance, and real estate 1,070; and employees in the service industries 7,245.

### Resources for Growth

1. Labor Supply - There is a current labor supply of 7,070 men and 5,400 women available for industrial jobs in the labor market area. In addition, 7,040 young men and 6,800 young women in the area will become 18 years of age before 1983 and potentially available for work.

2. Transportation - Lawrenceburg's local transportation capability is good. The Southern Railway System provides Lawrenceburg with switching facilities, team track, and siding space. Interstate 64 is located 10 miles north of Lawrenceburg. The Blue Grass Parkway, 5 miles south, runs through the southern portion of the county. Interstate 75 is 30 miles to the northeast. Twelve truck lines offer service to the area. Commercial air service is available 23 miles to the east at Lexington's Blue Grass Field, while small aircraft and commuter air service is provided at Frankfort, 14 miles away.



3. Utilities and Fuel - Lawrenceburg is served electric power by the Kentucky Utilities Company. Anderson County is supplied by the Fox Creek RECC. Western Kentucky Gas Company, whose source of supply is the Texas Gas Transmission Corporation, provides the county with natural gas service. There are three distributors of propane and two distributors of distillate fuel oil serving the Lawrenceburg area.

4. Education - The Anderson County School System provides education for both city and county residents.

There are ten senior colleges, three junior colleges, one technical institute, and one community college within 53 miles of Lawrenceburg. In addition to these 15 institutions, the Central Kentucky State Vocational-Technical School at Lexington, 23 miles east, offers training in 19 different course areas. The Franklin County Education Center in Frankfort, 14 miles north, provides training in seven course areas.

## THE LABOR MARKET AREA

POPULATION			
Area	1975*	1970	Percent Nonwhite 1970
Lawrenceburg	3,977**	3,579	10.1
Labor Market Area	142,500	132,925	N.A.
Anderson County	10,800	9,358	4.8
Franklin County	37,300	34,481	8.0
Mercer County	17,600	15,960	5.1
Nelson County	24,400	23,477	7.7
Shelby County	19,700	18,999	12.9
Spencer County	5,700	5,488	4.4
Washington County	10,400	10,728	10.6
Woodford County	16,600	14,434	10.8

\*Provisional Estimates.

\*\*1973 Population Estimates.

Sources: U. S. Department of Commerce, Bureau of the Census, Census of Population, 1970. U. S. Department of Commerce, Bureau of the Census, Current Population Reports, Series P-25, No. 562, June 1975; Series P-26, No. 75-17, May 1976.

### LABOR FORCE CHARACTERISTICS OF RESIDENTS, 1975

	Anderson County	Labor Market Area
Civilian Labor Force	5,192	64,299
Employment	4,840	59,941
Agricultural	474	7,896
Nonagricultural	4,366	52,045
Unemployment	352	4,358
Rate of Unemployment (%)	6.8	6.8

Source: Kentucky Department for Human Resources, Kentucky Labor Force Estimates, Annual Averages, 1975.



NONAGRICULTURAL EMPLOYMENT BY INDUSTRY,  
BY PLACE OF WORK, 1975

	<u>Anderson County</u>	<u>Labor Market Area</u>
All Industries	1,843	3,039
Mining & Quarrying	*	77
Contract Construction	55	1,751
Manufacturing	886	11,255
Food & Kindred Products	341	2,139
Tobacco	0	123
Apparel, Textiles, Leather	0	2,095
Lumber, Furniture	0	67
Printing & Publishing, Paper	11	1,675
Chemicals, Petroleum & Coal,		
Rubber	0	429
Stone, Clay & Glass	237	1,034
Primary Metals	73	159
Machinery, Metal Products,		
Equipment	11	2,576
Other Manufacturing	214	960
Transportation, Communications &		
Public Utilities	151	1,462
Wholesale & Retail Trade	433	7,270
Finance, Insurance &		
Real Estate	55	1,068
Services	244	7,245
Other	7	158

\*Not disclosed.

Note: Excludes domestic workers, railway workers; certain nonprofit corporations; majority of federal, state, and local government workers; and self-employed workers. Labor market area totals for some employment categories exclude employment that was not disclosed for individual counties. Manufacturing detail may not add to totals because of rounding of base data.

Source: Kentucky Department for Human Resources, Average Monthly Workers Covered by Kentucky Unemployment Insurance Law, 1975.

LAWRENCEBURG MANUFACTURING FIRMS,  
THEIR PRODUCTS AND EMPLOYMENT

Firm (Establishment date)	Product	Employment			Organized
		Total	Male	Female	
Anderson County Farm Service (1953)	Fertilizer, feed	7	7	0	
Anderson News (1877)	Newspaper, job printing	7	2	5	
Anderson Tool and Die (1974)	Tools, dies, molds, custom machines	6	6	0	
Austin Nichols Distilling Company, Inc. (1855)	Distilled spirits	165	100	65	
J T S Browns Son Company (1935)	Whisky	11	8	3	
Duncan & McFarland Farm Service, Inc. (1955)	Feed	6	5	1	
Edwards Sausage Company, Inc. (1939)	Sausage, weiners, bologna	49	43	6	*
Florida Tile Industries, Division of Florida Tile Industries, Inc. (1968)	Wall tile	239	144	95	
General Cable Corporation (1973)	Telephone cable	135	110	25	
Hoffman Distilling Company (1934)	Whisky	32	10	22	
Horn & Goin Company (1964)	Lumber, ready mix concrete	11	9	2	
The Kentucky Stone Company (1936)	Agricultural lime, railraod ballast	15	15	0	
Kraft Foods Company (1929)	Cheese, dried whey				*
Joseph E. Seagram & Sons, Inc. (N.A.)	Whiskey, dried feed	66	65	1	*
Universal Fasteners, Talon Division of Textron (1955)	Metal buttons, snap fasteners, hooks and eyes, auto-matic attaching machines	223	180	53	*

\*See Labor Organizations below.

Source: Kentucky Department of Commerce, Kentucky Directory of Manufacturers, 1977.

LABOR ORGANIZATIONS

Union

Amalgamated Meat Cutters and  
Butcher Workmen of  
North America

Distillers, Rectifiers and Wine  
and Allied Workers' Inter-  
national Union of America  
International Brotherhood of  
Fireman and Oilers Union

International Ladies' Garment  
Workers Union of America  
International Association of  
Machinists

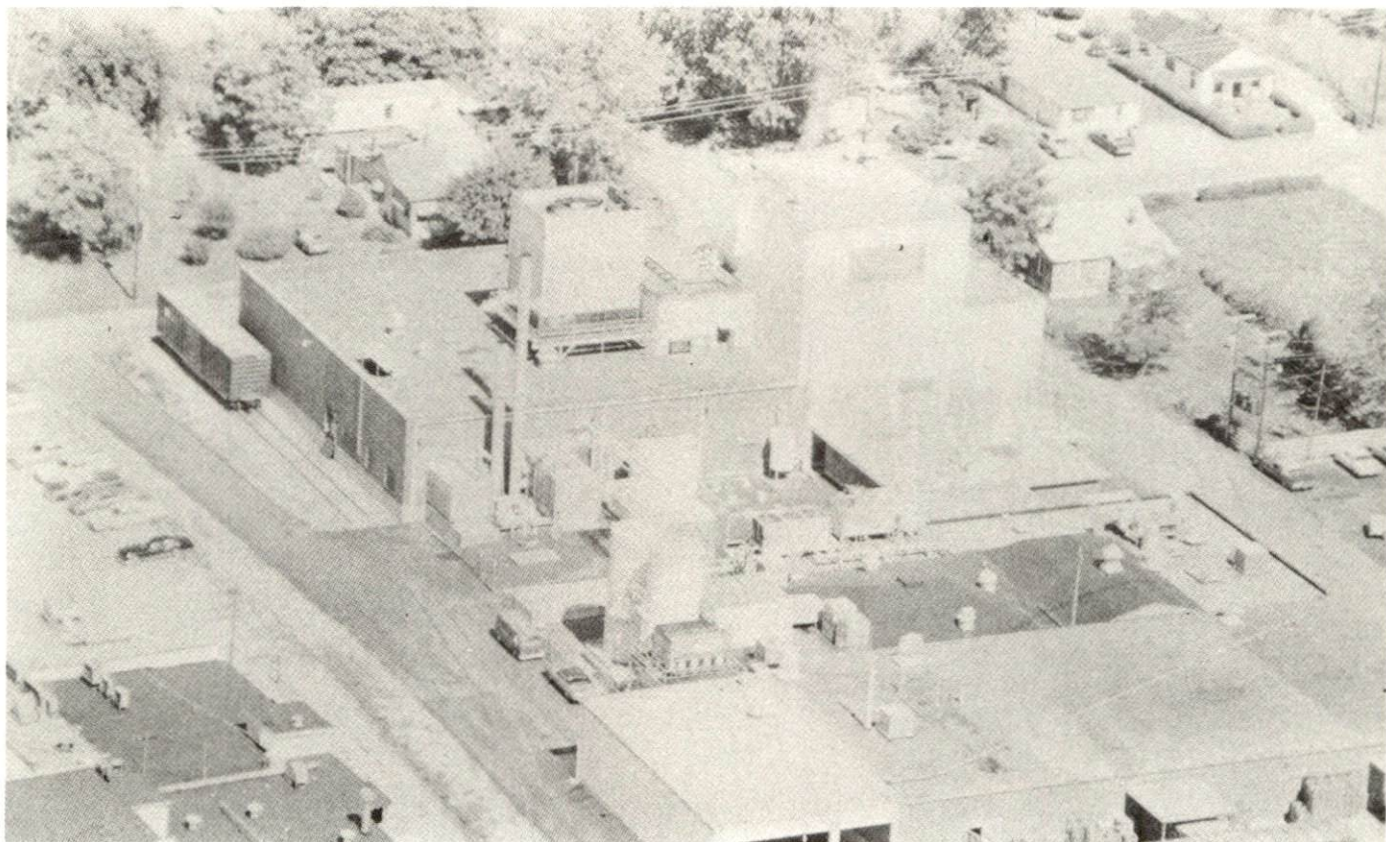
Representing manufacturing workers at:

Edwards Sausage Company, Inc., and  
Kraft Foods Company

Joseph E. Seagram & Sons, Inc.

Universal Fasteners - Talon Division  
of Textron



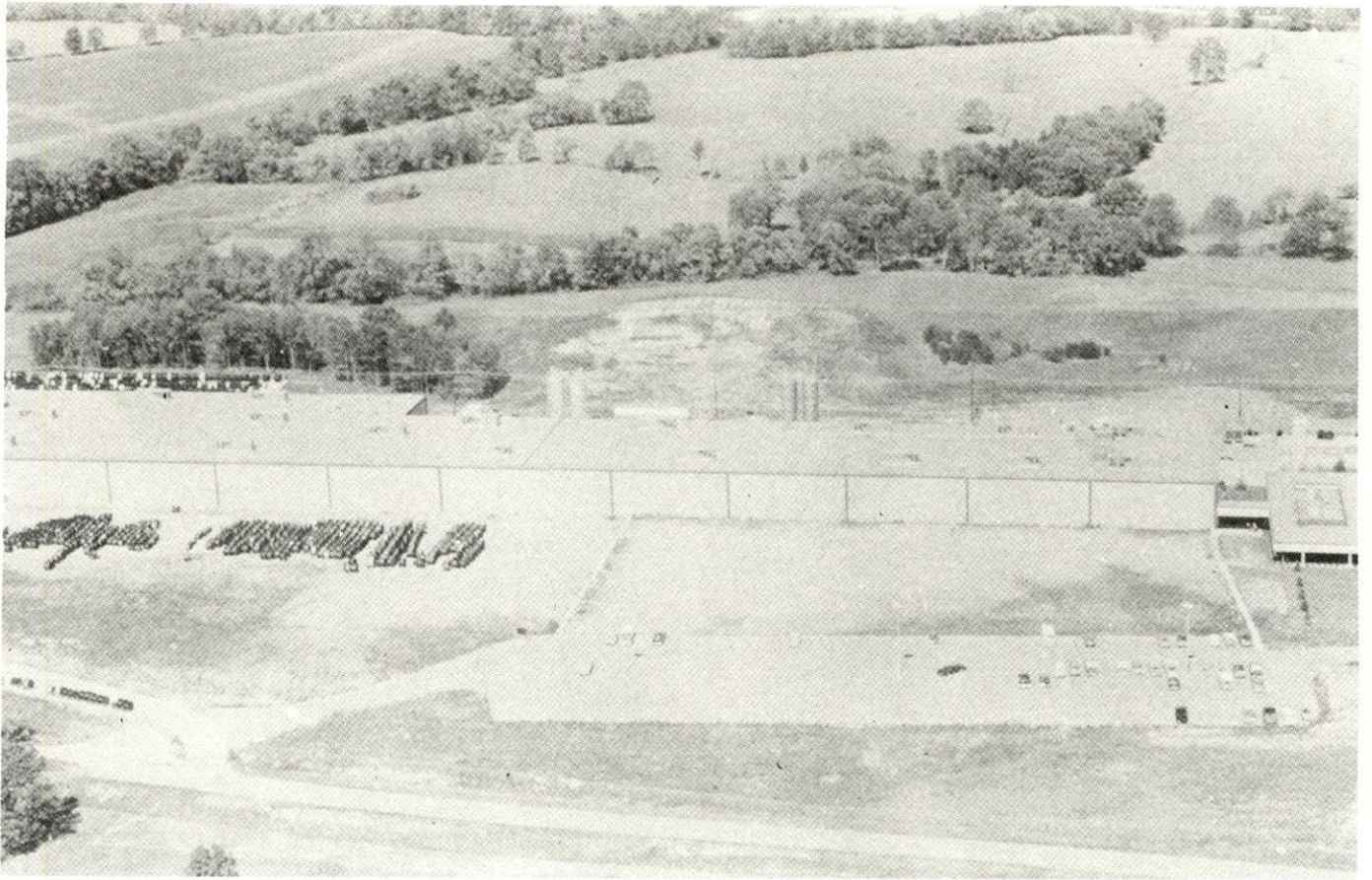


KRAFT FOODS COMPANY



EDWARDS SAUSAGE COMPANY, INC.





GENERAL CABLE CORPORATION



UNIVERSAL FASTENERS TALON DIVISION OF TEXTRON



ESTIMATED MALE LABOR SUPPLY  
LAWRENCEBURG LABOR MARKET AREA

Area	Current			Under- employed	Future
	Total	Not in Labor Force	Unemployed		Reaching 18 yrs. of age before 1983
Labor Market					
Area	7,070	1,750	3,170	2,150	7,041
Anderson	340	0	230	110	454
Franklin	2,940	1,750	560	630	1,663
Mercer	800	0	480	320	739
Nelson	1,200	0	840	360	1,538
Shelby	660	0	350	310	926
Spencer	210	0	130	80	301
Washington	520	0	400	120	622
Woodford	400	0	180	220	798

Sources: Kentucky Department for Human Resources, Kentucky Labor Supply Estimates by County, 1976. Kentucky Department of Commerce, Future Labor Supply before 1983.

ESTIMATED FEMALE LABOR SUPPLY  
LAWRENCEBURG LABOR MARKET AREA

Area	Current			Under- employed	Future
	Total	Not in Labor Force	Unemployed		Reaching 18 yrs. of age before 1983
Labor Market					
Area	5,400	1,580	1,180	2,640	6,796
Anderson	310	0	130	180	449
Franklin	2,150	1,050	310	790	1,584
Mercer	510	0	200	310	724
Nelson	660	0	200	460	1,506
Shelby	490	0	100	390	927
Spencer	450	370	40	40	295
Washington	390	160	100	130	548
Woodford	440	0	100	340	763

Sources: Kentucky Department for Human Resources, Kentucky Labor Supply Estimates by County, 1976. Kentucky Department of commerce, Future Labor Supply before 1983.



AVERAGE WEEKLY WAGES BY INDUSTRY,  
BY PLACE OF WORK, 1975

	<u>Anderson County</u>	<u>Franklin County</u>	<u>Mercer County</u>	<u>Nelson County</u>
All Industries	\$145.53	\$152.28	\$147.00	\$155.10
Mining & Quarrying	*	*	0	264.43
Contract Construction	109.53	219.90	134.65	200.08
Manufacturing	176.26	159.65	185.69	176.85
Transportation, Com- munications & Public Utilities	230.42	209.49	212.55	236.33
Wholesale & Retail Trade	90.43	108.61	95.14	114.84
Finance, Insurance & Real Estate	139.58	172.40	138.87	132.83
Services	92.52	153.72	87.82	90.62
Other	46.35	90.48	82.11	67.80
	<u>Shelby County</u>	<u>Spencer County</u>	<u>Washington County</u>	<u>Woodford County</u>
All Industries	\$134.80	\$115.08	\$112.40	\$171.09
Mining & Quarrying	0	0	0	0
Contract Construction	118.24	115.83	179.80	193.66
Manufacturing	177.07	138.90	120.12	197.98
Transportation, Com- munications & Public Utilities	185.93	123.38	138.00	218.75
Wholesale & Retail Trade	111.33	103.26	87.15	103.28
Finance, Insurance & Real Estate	152.48	*	154.58	132.28
Services	94.85	72.33	75.42	117.21
Other	*	76.58	*	171.37

\*Not disclosed.

Note: Excludes domestic workers, railway workers; certain nonprofit corporations; majority of federal, state, and local government workers; and self-employed workers.

Source: Kentucky Department for Human Resources, Average Weekly Wages of Workers Covered By Unemployment Insurance, 1975.



PER CAPITA PERSONAL INCOME

<u>Area</u>	<u>1974</u>	<u>1970</u>	<u>Percent Change</u>
Anderson County	\$4,339	\$3,194	35.9
Labor Market Area			
Range	\$3,806 - 5,507	\$2,559 - 4,020	N.A.
Kentucky	4,442	3,112	42.7
U. S.	5,448	3,966	37.4

Sources: U. S. Department of Commerce, Bureau of Economic Analysis, Survey of Current Business, August 1975. U. S. Department of Commerce, Bureau of Economic Analysis, March 1976.



## TRANSPORTATION

### Rail

Line serving Lawrenceburg - Southern Railway System

Services - Freight - 1 westbound and 2 eastbound freights daily; local daily between Lawrenceburg and Lexington on branch line; local daily between Harrodsburg and Shelbyville with local work and switching at Lawrenceburg; 5 eastbound and 5 westbound scheduled through freights daily; switching facilities; team track with space for 10 cars plus siding space for 50 cars; nearest piggyback facilities at Danville, 30 miles to the south, or at Louisville, 53 miles to the west.

For details on routing, schedules, rates, and services, contact:

District Sales Manager  
Southern Railway System  
1402 South 15th Street  
Louisville, Kentucky 40210  
(502) 637-7643

### Highways

U. S. Highways 127, 62, and state highway 44 serve Lawrenceburg and the surrounding area. Interstate 64 is located 10 miles to the north via U. S. Highway 127. The Blue Grass Parkway, located 5 miles south of Lawrenceburg via U. S. 127, serves Lawrenceburg to the east and west. Located 30 miles northeast of the city is Interstate 75, which provides easy transportation to the north and south.

Truck Service

<u>Company</u>	<u>Home Office</u>
Consolidated Freightways	7101 South Cicero Avenue Chicago, Illinois 60629
Cooper-Jarrett, Inc.	23 South Essex Avenue Orange, New Jersey 07051
Hogan Storage and Transfer Company	721 East Fourth Avenue Williamstown, West Virginia 25661
Interstate Motor Freight System	134 Grandville Avenue, S.W. Grand Rapids, Michigan 49502
Kentucky Truck Lines, Inc. (Distillery products and supplies only)	Wilkinson Street Frankfort, Kentucky 40601
Lawrenceburg Transfer Company*	Court Street Lawrenceburg, Kentucky 40342
McDuffee Motor Freight, Inc. (United Trucking)	3047 Lonyo Road Detroit, Michigan 48209
McLean Trucking Company	P. O. Box 213 Winston-Salem, North Carolina 27102
O. K. Trucking Company	3000 East Crescentville Cincinnati, Ohio 45241
Overnite Express, Inc.	1000 Semmes Avenue Richmond, Virginia 23209
Smith's Transfer Corporation of Virginia	P. O. Box 1000 Staunton, Virginia 24401
Turner Expediting Service	P. O. Box 21333, Standiford Field Louisville, Kentucky 40221

Other Freight Services

Nearest Shipping Center

United Parcel Service

Lexington, Kentucky, 23 miles distant

HIGHWAY MILES AND TRUCK TRANSIT TIME IN DAYS FROM  
LAWRENCEBURG, KENTUCKY, TO SELECTED MARKET CENTERS

City	Highway Miles	Delivery		City	Highway Miles	Delivery	
		Time TL				Time TL	
Atlanta, Ga.	385	2		Los Angeles, Calif.	2,163	4	
Birmingham, Ala.	421	2		Louisville, Ky.	55	1	
Chicago, Ill.	347	2		Nashville, Tenn.	193	1	
Cincinnati, Ohio	101	1		New Orleans, La.	710	2	
Cleveland, Ohio	340	2		New York, N.Y.	726	3	
Detroit, Mich.	360	2		Pittsburgh, Pa.	366	2	
Knoxville, Tenn.	198	1		St. Louis, Mo.	318	2	

Source: Delivery Time Only - O. K. Trucking Company, 3000 East  
Crescentville Road, Cincinnati, Ohio 45241.

\*Local terminal.

Air

Local

Capital City Airport  
Location: Frankfort, 14 miles north of Lawrenceburg  
Runways: 1 paved  
Length: 5,000 feet  
Traffic  
Control: Wind tee  
Lighting: Beacon, runway lights sundown to sunrise, REILS  
Services: Air Kentucky (air shuttle service), 100 octane, jet fuel, hangar storage, auto rental, and taxi

Nearest Commercial

Blue Grass Field  
Location: Lexington, 23 miles east of Lawrenceburg  
Runways: 2 paved  
Length: 6,500 feet and 3,500 feet  
Traffic  
Control: Tower, guards, radar arrival/departure control, Stage II contact approach control, Automatic Terminal Information Service, ground control  
Lighting: Approach lighting system, beacon, runways and obstructions lighted  
Services: Delta, Eastern, Piedmont, Allegheny, and Air Kentucky (air shuttle service); 80, 100 octane, jet fuel; major A & E repairs; certified avionics repair station; restaurant; National Weather Service; flight instruction; charter service; storage; taxi, limousines, and car rentals

Air Freight  
Service: Accepted on a space-available basis

Bus - Greyhound and Trailways Bus Lines

Taxi - One company, 24-hour service

Rental Services - Truck rentals available at Lawrenceburg; complete car, truck and trailer rentals available at Lexington, 23 miles away



POWER AND FUEL

Electricity

Company serving Lawrenceburg - Kentucky Utilities Company  
Source of power - Kentucky Utilities Company  
Total generating capacity - 1,615,500 KW  
For industrial rates contact:

Industrial Development Department  
Kentucky Utilities Company  
120 South Limestone Street  
Lexington, Kentucky 40507  
(606) 255-1461

Company serving Anderson County - Fox Creek RECC  
Source of power - East Kentucky Power Cooperative  
Total generating capacity - 868,000 KW  
For industrial rates contact:

Industrial Development Division  
East Kentucky Power Cooperative  
P. O. Box 707  
Winchester, Kentucky 40391  
(606) 744-4812

and/or

Fox Creek RECC  
P. O. Box 211  
Lawrenceburg, Kentucky 40342  
(502) 839-3442

Natural Gas

Company serving Lawrenceburg - Western Kentucky Gas Company  
Source of supply - Texas Gas Transmission Corporation  
Size of transmission mains - 24 and 26 inches (supplier);  
8 and 12 inches (distributor)  
Distribution mains - 2 and 4 inches  
Distribution pressure - 40 to 60 psi  
Btu content - 1,025 per cubic foot; Specific gravity - .60  
For rates and supplies contact:

Western Kentucky Gas Company  
108 North Main Street  
Lawrenceburg, Kentucky 40342  
(502) 839-6243

Other Fuels

Propane

Williams Energy Company (Doxol Propane)  
U. S. 127 Bypass  
Lawrenceburg, Kentucky 40342

Southern States Cooperative  
Highway 44  
Lawrenceburg, Kentucky 40342

Big 3 Gas company of Shelby County (Philgas)  
U. S. 60 West  
Shelbyville, Kentucky 40065

Fuel oils

Distillate fuel oil -

Marathon Oil Company  
122 Bush Avenue  
Lawrenceburg, Kentucky 40342

Texaco Petroleum Products  
(Robinson & Gorham Distributor)  
203 South Main Street  
Lawrenceburg, Kentucky 40342

Residual fuel oil - Arrangements must be made with the refinery.

Low sulphur content coal - Available in Eastern Kentucky.

## WATER AND SEWERAGE

### Water

Company serving Lawrenceburg - Lawrenceburg Water and Sewer Department  
201 Court Street  
Lawrenceburg, Kentucky 40342  
(502) 839-5372

Source - Kentucky River  
Treatment plant capacity - 2,250,000 gpd  
Average daily consumption - 800,000 gallons  
Peak daily consumption - 1,200,000 gallons  
Type treatment - Prechlorination, coagulation, sedimentation,  
filtration, and fluoridation  
Storage capacity - 1,225,000 gallons  
Size lines - 4, 6, 8, 10, and 12 inches  
Average pressure - 50 psi

#### MONTHLY WATER RATES FOR WHOLESALE AND INDUSTRIAL CONSUMERS

---

First	3,000 gallons	\$4.50 Minimum
Next	7,000 gallons	1.20 per M gallons
Next	20,000 gallons	1.11 per M gallons
Next	30,000 gallons	.90 per M gallons
Next	40,000 gallons	.80 per M gallons
Next	100,000 gallons	.71 per M gallons
Next	300,000 gallons	.63 per M gallons
Over	500,000 gallons	.60 per M gallons

\$5.33 Minimum rate outside city limits

Tap-on charge: Residential - \$200  
Commercial and Industrial - Actual  
cost of tap, material, and labor



Name of water district - Alton Water District  
Frankfort Road  
Lawrenceburg, Kentucky 40342  
(502) 839-3386

Area served - Northern Anderson County

Date when water district began operating - 1963

Source of supply of treated water - Lawrenceburg Water and Sewer  
Department

Average amount of water used in a 24-hour period - 46,000 gallons

Peak amount of water used in a 24-hour period - 60,000 gallons

Storage capacity - 100,000 gallons

Average pressure - 50-55 psi

Size lines - 3, 4, and 6 inches

Rates -

First	4,000 gallons	\$6.50
Next	11,000 gallons	.85 per M gallons
All over	15,000 gallons	.75 per M gallons

Tap-on charge: \$250

Name of water district - Stringtown Water District  
Route 1  
Lawrenceburg, Kentucky 40342  
(502) 839-3953

Area served - Stringtown (southern Anderson County)

Date when water district began operating - 1951

Source of supply of treated water - Lawrenceburg Water and Sewer  
Department

Average amount of water used in a 30-day period - 700,000 gallons

Peak amount of water used in a 30-day period - 1,000,000 gallons

Average pressure - 30-35 psi

Size lines - 2, 4, and 6 inches

Rates -

First	2,000 gallons	\$4.50 Minimum
Next	3,000 gallons	1.00 per M gallons
Next	5,000 gallons	.90 per M gallons
Over	10,000 gallons	.86 per M gallons

Tap-on charge: \$250

Surface water sources - Kentucky River and Salt River  
Average discharge - Kentucky River at Lock 6, near Salvisa,  
6,759 cfs (50 years, unadjusted, USGS); Salt River, near  
Van Buren, 249 cfs (37 years, USGS)  
Expected ground water yield - 50 to 200 gpm in small portion of  
central Anderson County; 5 to 50 gpm along Kentucky River along  
eastern boundary; 5 gpm or less in remainder of county

### Sewerage

Company serving Lawrenceburg - Lawrenceburg Water and Sewer Department\*  
201 Court Street  
Lawrenceburg, Kentucky 40342  
(502) 839-5372

Design capacity - 500,000 gpd  
Average daily flow - 490,000 gallons  
Treatment - Primary and secondary  
Type treatment - Equalization lagoon, primary clarifier, trickling  
filter, secondary clarifier, digester, aeration lagoon, polishing  
lagoon, chlorine contact tank, and drying beds  
Treated effluent discharged into - Hammonds Creek  
Size of sanitary mains - 6, 8, 10, and 12 inches  
Size of storm mains - 8, 10, 12, 15, and 18 inches  
Rates - 100 percent of monthly water bill  
Tap-on charge - \$75 residential

\*A 201 Facilities Plan has been completed and is now pending approval  
by EPA.

## CLIMATE

### Anderson County

#### Temperature

Annual mean (30-year record)	55.2 degrees
Average annual 1975	55.9 degrees
Record highest, July, 1966 (12-year record)	98.0 degrees
Record lowest, January, 1972 (12-year record)	-11.0 degrees
Normal heating degree days (30-year record)	4,729
(Heating degree day totals are the sums of negative departures of average daily temperatures from 65 degrees F.)	

#### Precipitation

Mean annual total (30-year record)	44.49 inches
Mean annual snowfall (30-year record)	15.60 inches
Total precipitation 1975	59.11 inches
Mean number days precipitation (.01 inch or more) (31-year record)	131
Average number days thunderstorms (31-year record)	47

#### Prevailing Winds (17-year record)

South

#### Relative Humidity

1 a.m.	76 percent (11-year record)
7 a.m.	81 percent (12-year record)
1 p.m.	59 percent (12-year record)
7 p.m.	64 percent (12-year record)

Source: U. S. Department of Commerce, Environmental Science Services Administration, Climatological Data, 1975. Station of record: Lexington, Kentucky.



LOCAL GOVERNMENT

City

Structure - Mayor - 4-year term; 6 councilmen - 2-year terms  
Budget 1976 - General Fund \$274,183  
                  Water and Sewer Fund 372,992  
Fees and licenses - Occupational license fees range from  
\$25 to \$500 per year

County

Structure - County Judge - 4-year term; 6 magistrates - 4-year terms  
Budget 1976-77 - General Fund \$247,150; Road Fund \$110,000

Assessed Value of Property, 1976

<u>Classes of Property</u>	<u>Lawrenceburg</u>	<u>Anderson County</u>
Real Estate	\$30,097,000	\$89,600,425
Tangibles	7,466,600	17,260,767

Property Taxes

All property in Kentucky is assessed at 100 percent of fair cash value.

Land and buildings are taxed by the state and may be taxed by local jurisdictions. The state rate is \$0.315 per \$100 of assessed valuation. Beginning January 1, 1977, local school tax rates were reduced by \$0.30 per \$100 valuation and the state rate was increased by \$0.30 per \$100 (from \$0.015), resulting in no net change in the combined state and local rates.

Manufacturing machinery, raw materials inventories, pollution control equipment, and goods in the process of manufacture are not subject to local taxation. The state rate is \$0.15 per \$100.

Other tangible personal property owned by manufacturers (automobiles, trucks, finished goods, office furniture, office equipment) is taxed by the state at \$0.45 per \$100 and may be taxed by local jurisdictions. Beginning January 1, 1977, local school rates were reduced by \$0.30 per \$100 valuation and the state rate was raised by \$0.30 per \$100 (from \$0.15).

Property stored in public warehouses in a transit status is not subject to local taxation. The state rate is only \$0.015 per \$100.

Intangible personal property located in Kentucky (money in hand, shares of stock, notes, bonds, accounts, and other credits) is taxed by the state at \$0.25 per \$100, and is not subject to local taxation.

(Contd.)

Intangible personal property owned by corporations in Kentucky as a result of business transactions performed out-of-state, but having a tax situs in Kentucky (accounts receivable, notes, bonds, credits, non-domestic bank deposits, licensing or royalty agreements, shares of stock of any affiliated company, etc.) is taxed by the state at \$0.015, and is not subject to local taxation.

Local Property Tax Rate per \$100 of Assessed Valuation, 1976\*

<u>Taxing Jurisdiction</u>	<u>Lawrenceburg</u>	<u>Anderson County</u>
County	\$ .216	\$ .216
School	.558	.558
City	.300	

Planning and Zoning

Joint agency - Lawrenceburg-Anderson County Joint Planning Commission  
 Zoning enforced - City only\*\*  
 Subdivision regulations enforced - All areas  
 Local codes enforced - Building  
 Mandatory state codes enforced - Plumbing, National Fire Protection Association Code, National Building Code (for major buildings and residential construction containing more than 12 bedrooms per building)

Safety

<u>Police</u>	<u>Lawrenceburg</u>	<u>Anderson County</u>
Total staff	11	5
Radio-patrol cars	3	3

Fire

American Insurance Association Fire Rating	7	10
Volunteers	20	28

Rescue Service

Anderson County Rescue Squad:  
 Number of volunteers - 8  
 Equipment - 1 rescue vehicle equipped for light duty rescue and ambulance service, 2 recovery boats, 2 motors, 2 trailers, 2 portable generators, light duty rescue equipment

\*Kentucky Department of Revenue, Kentucky Property Tax Rates, 1976.

\*\*A draft of county-wide zoning regulations has been completed and is pending approval.

Solid Waste

	<u>Lawrenceburg</u>	<u>Anderson County</u>
Type service	Private	Private
Fee charged:		
residential	\$3.50 per month	\$3.50 per month
business	Based on volume	Based on volume
Collection frequency:		
residential	Weekly	Weekly
business	As needed	As needed
Trash pickup	On call	On call
Disposal method	Sanitary landfill	Sanitary landfill

Sanitation service is available to manufacturing plants located inside and outside the corporate limits through a private sanitation company. Cost of this service is based on volume and frequency of collection.



EDUCATION

Public Schools

Anderson County

Total Enrollment (Fall, 1976)	2,479
Elementary	1,345
Middle School	399
High School	735
Student-Teacher Ratio	20-1
Elementary	20-1
Middle School	25-1
High School	17-1
Percent High School Graduates to College	25.3
Expenditures Per Pupil (1975-76)	\$748.17
Bonded Indebtedness, June 30, 1976	\$1,499,000



ANDERSON COUNTY HIGH SCHOOL AND EMMA B. WARD ELEMENTARY SCHOOL



## Area Colleges and Universities

<u>Name</u>	<u>Location (Miles distant)</u>	<u>Enrollment (Fall, 1976)</u>	<u>Highest Degree Conferred</u>
Kentucky State University	Frankfort (14)	2,389	Masters
Midway Junior College	Midway (14)	333	Associate
Lexington Technical Institute	Lexington (23)	1,765	Associate
Transylvania University	Lexington (23)	752	Masters*
University of Kentucky	Lexington (23)	22,525	Ph.D., M.D., D.M.D., J.D.
Asbury College	Wilmore (28)	1,258	Baccalaureate
Centre College	Danville (30)	800	Baccalaureate
Georgetown College	Georgetown (32)	1,020	Masters
Saint Catharine Junior College	Saint Catharine (36)	152	Associate
Southeastern Chris- tian Junior College	Winchester (42)	99	Associate
Eastern Kentucky University	Richmond (49)	13,450	Masters, Ph.D.**
Bellarmino College	Louisville (55)	1,705	Baccalaureate
Jefferson Community College	Louisville (55)	5,870***	Associate
Spalding College	Louisville (55)	1,053	Baccalaureate
University of Louisville	Louisville (55)	16,300	Ph.D., M.D., D.M.D., J.D.

\*Courses in the Masters degree program are taught on the Transylvania campus by Xavier University of Cincinnati faculty members. The degree is issued by Xavier University.

\*\*Cooperative program with the University of Kentucky, Lexington, for a Ph.D. in education only.

\*\*\*Includes enrollment at Southwest campus.



Vocational Schools

Nearest State School

Location	Central Kentucky State Vocational-Technical School
Miles Distant	Lexington
Curriculum	23 Agriculture Equine Education Business and Office Clerical Secretarial Consumer and Home Economics Commercial Foods Consumer Education Health and Personal Service Occupations Cosmetology Orderly/Nurse Assistant Practical Nursing Marketing and Distributive Education Industrial Education Auto Body Repair Auto Mechanics Drafting Electronics Graphic Arts (Printing) Industrial Electricity Machine Shop Office Machine Repair Sheet Metal Welding Learning Resource Center

Nearest Area Education Center

Location	Franklin County Area Vocational Education Center
Miles Distant	Frankfort
Curriculum	14 Marketing and Distributive Education Industrial Education Auto Body Repair, Auto Mechanics, Drafting, Electricity, Machine Shop, Welding

Arrangements can be made to provide training in the specific production skills required by an industrial plant. Instructions may be conducted either in the vocational school or in the industrial plant, depending upon the desired arrangement and the availability of special equipment.

## HEALTH

### Local Medical Personnel

Physicians - 7  
Dentists - 4

### Hospitals

<u>Nearest General Hospitals</u>	<u>Location</u>	<u>Beds</u>
Woodford Memorial Hospital	Versailles, 10 miles distant	67
King's Daughters' Memorial Hospital	Frankfort, 14 miles distant	130

#### Woodford Memorial Hospital

General hospital facilities - 2 operating rooms, recovery room, laboratory, X-ray department, pharmacy, emergency room, coronary and intensive care units, delivery and labor rooms, and respiratory therapy

Medical staff - 15 doctors, 26 registered nurses, 2 surgical technicians, 3 medical technologists, and 13 licensed practical nurses

#### King's Daughters' Memorial Hospital

General hospital facilities - 5 operating rooms, recovery room, laboratory, X-ray, intensive care unit, emergency room, coronary care unit, pharmacy, OB section with nursery, neurosurgery and neurology services including EEG, physical therapy, respiratory therapy, nuclear medicine, social services, blood bank, outpatient surgery

Medical staff - 40 medical doctors, 13 dentists, 74 registered nurses, 19 licensed practical nurses, 60 nurses technicians, 6 orderlies

### Ambulance Service

Name - Anderson Emergency Medical Service  
Staff - 5 (4 are Emergency Medical Technicians)  
Service - 24 hours a day, 7 days a week, radio-dispatched service  
Equipment - Two vans fully equipped as ambulances (one van is also fully equipped with rescue equipment)

### Public Health

Facility - Anderson County Health Department  
Staff - Full-time: Administrative assistant-health environmentalist, community health nurse, community health worker-outreach worker, clerk; Part-time: Community health nurse, nutritionist, clinician, 2 clerks

## OTHER LOCAL FACILITIES

### Communications

Telephone - South Central Bell Telephone Company  
Services - Standard

Telegraph - Western Union Telegraph Company  
Services - Telephone

Postal - U. S. Post Office  
Class - First  
Mail received - Twice daily  
Mail dispatched - Twice daily

Newspapers - Anderson News  
Weekly and circulation - 4,000  
Other papers received from - Louisville, Lexington, and Frankfort,  
Kentucky

Radio -  
Stations received from - Louisville, Lexington, Frankfort, Danville,  
Harrodsburg and Versailles, Kentucky; Cincinnati, Ohio; Nashville,  
Tennessee

Television -  
Reception from - Louisville and Lexington, Kentucky; Cincinnati, Ohio  
Kentucky Educational Television - Lexington-Richmond transmitter -  
Channel 46; Louisville transmitter - Channel 68

### Library Services

Public library - Anderson Public Library  
Size collection - 27,243 volumes  
Circulation, 1975-76 - 123,000 volumes  
Services - Records, pictures, periodicals, newspapers, record player,  
art by local artists, film strips and projector, movie projector and  
screen, carousel projector, microfilm reader-printer, copy machine,  
story hour, community meeting room, bookmobile

### Religious Institutions

Number of churches - 15  
Denominations - Baptist, Catholic, Christian, Church of Christ,  
Church of God, Episcopal, Jehovah's Witnesses, Methodist,  
Pentecostal, Presbyterian

Nearest Synagogues - Lexington, 23 miles away  
Congregations - Adath Israel (reform), Ohavey Zion (traditional)



## Financial Institutions

<u>Banks</u>	<u>Assets</u>	<u>Deposits</u>	<u>Statement Date</u>
Anderson National Bank	\$16,411,008	\$14,549,194	6/30/76
Lawrenceburg National Bank	16,614,539	14,425,497	6/30/76

<u>Savings and Loan Associations</u>	<u>Assets</u>	<u>Savings Accounts</u>	<u>Statement Date</u>
Harrodsburg First Federal Savings and Loan Association	\$36,030,855	\$33,049,972	9/30/76

## Hotels and Motels

Total number 2  
Total units 32

## Clubs and Organizations

Business and Civic - Chamber of Commerce, Jaycees, Lions Club, Ministerial Association, Optimist Club, Rotary Club, Ruritan Clubs, Business and Professional Association, Newcomers Club

Fraternal - American Legion, Masonic Lodge, Beaver Creek Lodge #335

Women's - Business and Professional Women's Club, D.A.R., Eastern Star, Garden Club, Homemakers, Jaycettes, Woman's Club, Beta Sigma Phi

Youth - Boy Scouts, Girl Scouts, Future Farmers of America, Future Homemakers of America, 4-H Clubs, Little League (baseball, basketball, and football)

Other - American Red Cross, Parent-Teacher Association, Historical Society, Sportsman Club

## RECREATION

### Local

Lawrenceburg offers a variety of recreational facilities and supervised programs that include baseball, softball, basketball and tennis. Public facilities include two parks, three playgrounds, one swimming pool, one 18-hole golf course, tennis courts, baseball diamonds and football fields. Other featured activities include the Lawrenceburg Fair, the Horse Show, and the 4-H Fair. Fishing and boating are available at Beaver Lake, 10 miles southwest of town.

### Area

Lawrenceburg is situated in an area that offers many recreational facilities and scenic sites. Located 14 miles to the north is Frankfort, the state capital, offering numerous historical sites, the State Capitol Building and various attractions.

Two state parks are located near Lawrenceburg. In Harrodsburg, 21 miles south, Old Fort Harrod State Park offers a full scale reproduction of the original fort which was built 200 years ago. A museum is located at the park and the outdoor drama, "The Legend of Daniel Boone," is presented every summer in the Old Fort Harrod amphitheatre.

My Old Kentucky Home State Park in Bardstown, 41 miles southeast, is the site of the "Stephen Foster Story" presented in the park amphitheatre each summer. It was here that Stephen Collins Foster was inspired to compose "My Old Kentucky Home," which later became the official song of Kentucky. Park facilities include campsites, picnic areas, a golf shop and a gift shop.

Lexington, 23 miles away, offers a variety of entertainment, cultural activities, and sporting events. Some of the world's foremost thoroughbred horses are bred and trained in this area. Horse racing is available at Keeneland Race Course and the Red Mile Trotting Track.

In addition to the state parks and area activities, five state shrines are located within a 45-mile radius of Lawrenceburg.

## COMMUNITY IMPROVEMENTS

### Industrial

1. The Austin-Nichols Distilling Company has completed an expansion which increased the capacity of its warehouses.
2. A new \$14 million plant constructed by the General Cable Corporation is now in operation.

### Education

1. The Emma B. Ward Elementary School, located adjacent to the Anderson County High School, was completed in the fall of 1975 at a cost of \$1,250,000.

### Public Safety

1. Three new patrol cars were purchased by the Lawrenceburg Police Department; the Lawrenceburg Fire Department received a new 1,000 gpm pumper.

### Water - Sewerage

1. A 201 Facilities Plan has been completed and is now pending approval by EPA.

### Recreation

1. A new track was completed at the Anderson County High School and a baseball field is planned for completion in 1980.
2. A full-time supervisor has been hired by the Parks and Recreation Board under the CETA II program.

### Other

1. A study is underway for a new parking lot in the downtown business area.
2. The city has applied for \$407,500 from HUD, through the Community Development Block Grant, for funds to clear dilapidated and abandoned buildings, subdivision rezoning, storm and sewer drains, extension of sewer lines, general renovation, and a multipurpose senior citizens center.
3. A draft has been completed concerning county-wide zoning regulations and is pending approval.