





# DPPA2 and DPPA4 are necessary to establish a 2C-like state in mouse embryonic stem cells

Alberto De Iaco , Alexandre Coudray, Julien Duc & Didier Trono\* 

## Abstract

After fertilization of the transcriptionally silent oocyte, expression from both parental chromosomes is launched through zygotic genome activation (ZGA), occurring in the mouse at the 2-cell (2C) stage. Among the first elements to be transcribed are the *Dux* gene, the product of which induces a wide array of ZGA genes, and a subset of evolutionary recent LINE-1 retrotransposons that regulate chromatin accessibility in the early embryo. The maternally inherited factors that activate *Dux* and LINE-1 transcription have so far remained unknown. Mouse embryonic stem cells (mESCs) recapitulate some aspects of ZGA in culture, owing to their ability to cycle through a 2C-like stage when *Dux*, its target genes, and LINE-1 integrants are expressed. Here, we identify the paralog proteins DPPA2 and DPPA4 as necessary for the activation of *Dux* and LINE-1 expression in mESCs. Since their encoding RNAs are maternally transmitted to the zygote, it is likely that these factors are important upstream mediators of murine ZGA.

**Keywords** DPPA2; DPPA4; DUX; LINE-1; zygotic genome activation

**Subject Categories** Chromatin, Epigenetics, Genomics & Functional Genomics; Development & Differentiation

**DOI** 10.15252/embr.201847382 | Received 9 November 2018 | Revised 7 March 2019 | Accepted 11 March 2019

**EMBO Reports (2019) e47382**

## Introduction

Mammalian embryonic development begins with the fertilization of a transcriptionally silent oocyte by the spermatozoa, resulting in the formation of a totipotent zygote. Transcription from the two parental genomes ensues through a phenomenon known as zygotic or embryonic genome activation (ZGA or EGA). Murine ZGA occurs at the 2-cell stage, and members of the DUX family of transcription factors were recently identified as important inducers of early embryonic genes in mouse, human, and likely all placental mammals [1–3]. However, murine and human DUX are expressed only after fertilization of the oocytes. Moreover, a subset of LINE-1 retrotransposons is transiently activated during this period, a DUX-independent phenomenon important for regulating chromatin accessibility in the murine pre-implantation embryo [4]. Maternally

inherited factors are thus likely responsible for inducing the transcription of both *Dux* and LINE-1 in the nascent embryo.

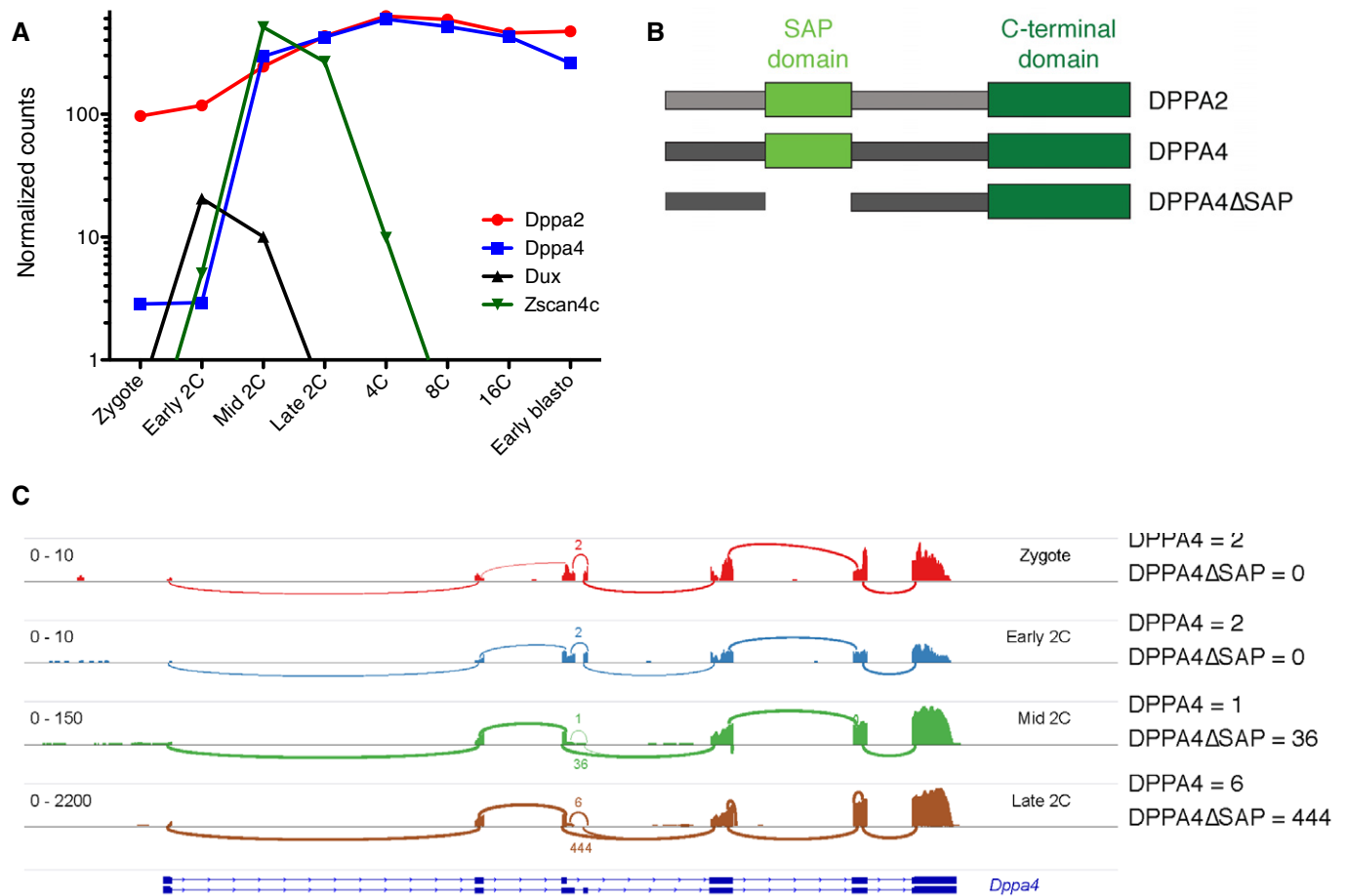
*Dppa2* (developmental pluripotency-associated 2) and *Dppa4* (developmental pluripotency-associated 4) are paralog genes conserved in mammals and found as unique *Dppa2* orthologs in amphibians, reptiles, and marsupials [5]. All *Dppa2* and *Dppa4* ortholog genes have a conserved SAP (SAF-A/B, Acinus, and PIAS) motif, important for DNA binding, and a C-terminal domain of unknown function [6]. These genes were first described for their expression profile restricted to pluripotent cells and the germline [7,8]. It was subsequently demonstrated that DPPA2 and DPPA4 activate transcription of genes important for germ cell development in mouse embryonic stem cells (mESCs) and are both essential for murine embryogenesis [9,10]. Embryonic development is impaired when DPPA4 is depleted from murine oocytes, suggesting that the maternally inherited fraction of the protein plays an important role in the early pre-implantation period [9]. How DPPA2 and DPPA4 activate transcription of target genes is unclear, but both proteins associate with transcriptionally active chromatin in mESCs [11,12], and promoters of DPPA2-stimulated genes acquire repressive epigenetic marks upon loss of this factor in mESCs [10]. This suggests that DPPA2 and DPPA4 act as epigenetic modifiers.

A subpopulation of mESCs known as 2C-like cells cycles through a state where *Dux* and target genes are transiently expressed [1,13]. Here, we demonstrate that DPPA2 and DPPA4 act as inducers of *Dux* and LINE-1 transcription in mESCs to promote the establishment of a 2C-like state. As transcripts encoding DPPA2 and to a lesser extent DPPA4 are present in the zygote, it is likely that these factors are important upstream mediators of murine ZGA.

## Results and Discussion

### DPPA2 and DPPA4 are expressed prior to ZGA

The downregulation of genes expressed in murine 2C embryos when *Dppa4* is deleted in mESCs [9] suggested that its product might regulate ZGA. We thus examined the expression of this gene and its paralog *Dppa2* in pre-implantation embryos. We found *Dppa2* transcript levels to be high from oocytes to blastocysts, and their *Dppa4*



**Figure 1. DPPA2 and DPPA4 are expressed throughout pre-implantation embryo development.**

A Comparative expression during murine pre-implantation embryo development of *Dppa2* (red), *Dppa4* (blue), *Dux* (black), and *Zscan4c* (ZGA marker, green). Each dot represents the average value of single-cell RNA-seq from [15].  
 B Schematic representation of DPPA2, DPPA4 full-length, and DPPA4 truncated proteins. The conserved domains are shown: SAP (light green), C-terminal (dark green).  
 C Sashimi plot representing coverage on the *Dppa4* gene of an RNA sequencing analysis of murine zygotes, early 2C, mid-2C, and late 2C (A). Arcs depict splicing events, and numbers, their relative frequency (i.e., reads across junctions).

counterparts to raise only at ZGA (Figs 1A and EV1A) [14,15]. Therefore, both DPPA2 and DPPA4 are present when *Dux*, a strong inducer of ZGA, starts being transcribed.

*Dppa4* encodes for two protein isoforms, one full-length and one lacking the SAP domain (DPPA4ΔSAP) (Figs 1B and EV1B) [9]. The SAP domain promotes nuclear localization, suggesting that the truncated DPPA4 variant is less prone to associate with chromatin [9]. Interestingly, we detected only low levels of full-length *Dppa4* transcripts in zygotes and 2C embryos, likely the remnants of maternal transcripts, while their truncated counterparts were highly expressed in middle and late 2C, that is, upon ZGA (Fig 1C). This indicates that maternally inherited and ZGA-produced DPPA4 isoforms are different, and may have distinct functions. In mESCs, we detected only full-length *Dppa4* transcripts (Fig EV1C), and their levels were comparable in *wild-type* (WT) cells, and *Dux* KO cells with or without ectopic expression of DUX, indicating that *Dppa4* expression is not regulated by DUX (Fig EV1D and E). On the other hand, *Dppa2* transcription is comparable in WT and *Dux* KO cells, but ectopic expression of DUX in cells depleted of the endogenous

transcripts displays a significant increase of *Dppa2* expression, suggesting that DUX can promote but is not essential for *Dppa2* transcription.

#### DPPA2 and DPPA4 induce expression of DUX and other ZGA genes in 2C-like mESCs

By analyzing a publicly available RNA sequencing (RNA-seq) dataset from mESCs sorted for expression of a 2C-specific reporter system (MERVL-GFP, *Zscan4*-Tomato) [16], we found higher level of *Dppa2* but not *Dppa4* transcripts in this subpopulation (Figs 2A and EV2A). To ask whether DPPA2 and DPPA4 are necessary for transition through this 2C-like state, we transduced mESCs carrying the MERVL-GFP reporter, the expression of which we previously demonstrated to be DUX-dependent [1], with lentiviral vectors expressing shRNAs directed against *Dppa2* or *Dppa4* (Fig 2B and C). We found that expression of *Dux*, its downstream target *Zscan4*, and the MERVL-GFP reporter was lost upon DPPA2 or DPPA4 depletion. To confirm these results, we deleted *Dppa2* or *Dppa4* from

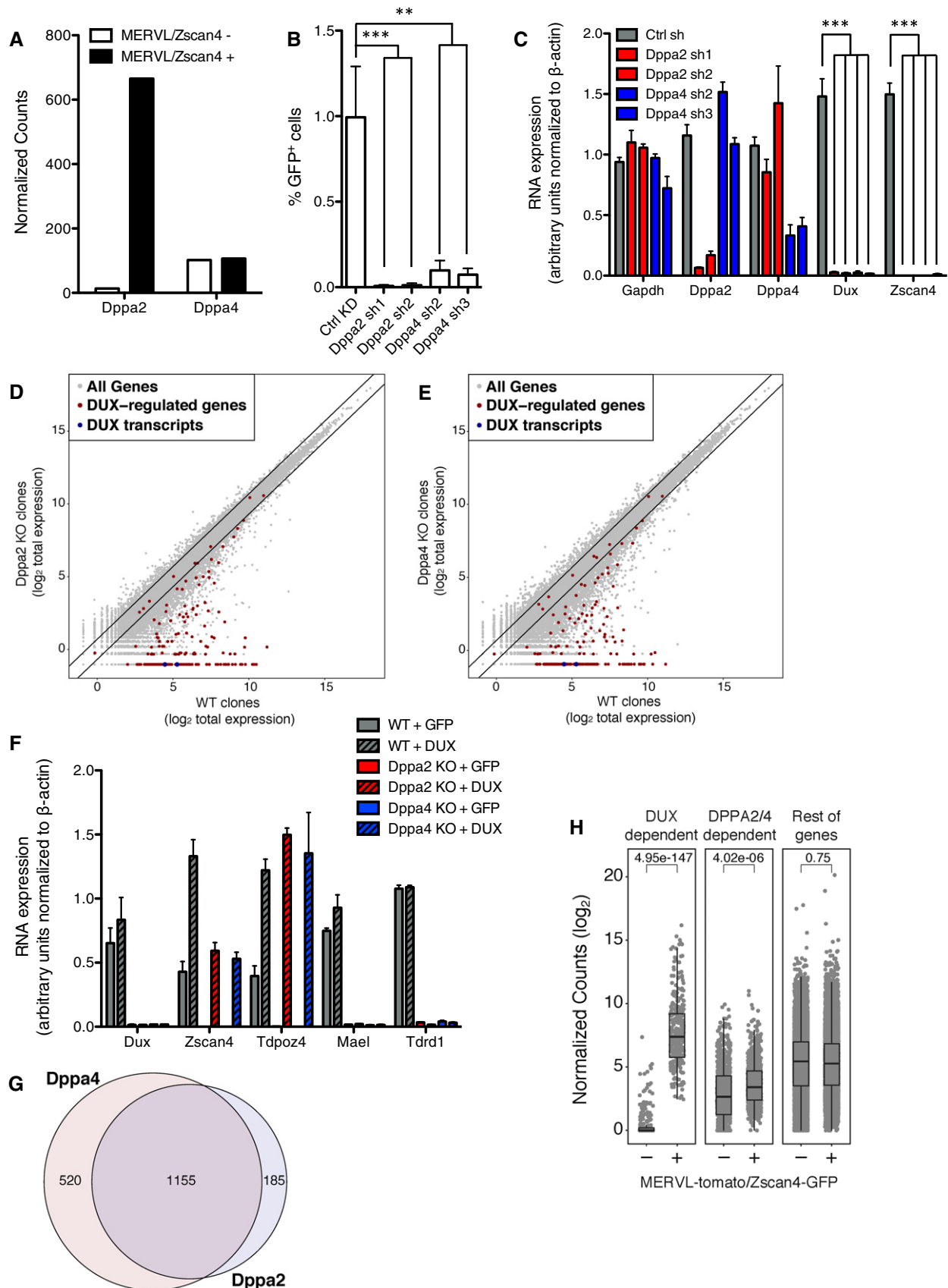


Figure 2.

**Figure 2. DPPA2 and DPPA4 regulate expression of *Dux* and other genes in mESCs.**

- A Average expression of *Dppa2* and *Dppa4* in a single-cell RNA-seq analysis of mESCs sorted for expression of both Tomato and GFP reporters driven by MERVL and *Zscan4* promoters, respectively, and the double-negative population.
- B, C Fraction of GFP<sup>+</sup> cells (B) or *Dppa2*, *Dppa4*, *Dux*, and *Zscan4* gene expression (C) in mESCs carrying a MERVL-GFP reporter and depleted of *Dppa2* or *Dppa4* using shRNAs specific to the transcripts or a control. Expression was normalized to *Actb*. Bars represent the average and error bars the SD;  $n = 3$ . \*\* $P \leq 0.01$ , \*\*\* $P \leq 0.001$ , unpaired t-test.
- D, E RNA-seq analysis of WT and *Dppa2* (D) or *Dppa4* (E) KO mESC clones. The dot plot displays the average gene expression of three independent clones from each cell type;  $n = 3$ .
- F Comparative expression by qPCR of *Dux*, two downstream targets of DUX (*Zscan4* and *Tdpoz4*), and two DUX-independent targets of DPPA2 and DPPA4 (*Mael* and *Tdrd1*) in mESCs depleted of endogenous DPPA2 and DPPA4 and overexpressing ectopically DUX or GFP as a control. Expression was normalized to *Actb*. Bars represent the average and error bars the SD;  $n = 3$ .
- G Venn diagram representing the overlap of genes downregulated in *Dppa2* and *Dppa4* KO compared to WT cells.
- H Comparative expression of DUX-dependent ( $n = 300$ ) and DPPA2- and DPPA4-dependent ( $n = 1,288$ ) genes and the rest of the genes in mESCs sorted for expression of both Tomato and GFP reporters driven by MERVL and *Zscan4* promoters, respectively, and the double-negative population. Box limits, twenty-fifth and seventy-fifth percentiles; lines in the boxes, median. The upper whisker extends from the hinge to the largest value, no further than 1.5 $\times$  the interquartile range (IQR) from the hinge. The lower whisker extends from the hinge to the smallest value, at most 1.5 $\times$  the IQR of the hinge (paired t-test).

mESCs by CRISPR/Cas9-mediated genome editing. Transcriptome analyses revealed a complete loss of transcripts from *Dux* and most of its previously defined downstream target genes (Figs 2D and E, and EV2B). Expression of some of these genes (*Zscan4* and *Tdpoz4*) was rescued when *Dux* was ectopically expressed in *Dppa2* or *Dppa4* KO mESCs (Fig 2F), suggesting that DPPA2 and DPPA4 act upstream of DUX in the establishment of a 2C-like state in mESCs. We also identified another subset of 1,155 genes downregulated in both *Dppa2* and *Dppa4* KO mESCs that were not controlled by DUX, including *Mael*, *Tdrd1*, and *Prex2* (Figs 2G and EV2C and D). These genes were more expressed in 2C-like cells than in the rest of mESC population (Fig 2H). Nevertheless, only few of these genes were transcribed specifically at ZGA (Fig EV2E and F), pointing to differences in the transcriptomes of 2C embryos and 2C-like ES cells [9,10]. Notably, genes controlled by DPPA2 and DPPA4 are not located in the proximity of MERVL regulatory sequences (MT2<sub>mm</sub>), in contrast to DUX-controlled ZGA-specific genes (Fig EV2G).

We overexpressed hemagglutinin (HA)-tagged forms of DPPA2 (DPPA2-HA) or DPPA4 (DPPA4-HA) in the corresponding KO mESCs and found a small increase in the expression of *Dux*, its downstream targets such as *Zscan4* and *Tdpoz4*, and *Mael* and *Tdrd1* (Fig 3A). When we overproduced DPPA2-HA and DPPA4-HA (DPPA2/4) simultaneously in cells depleted for both factors, the expression of *Dux*, *Zscan4*, and *Tdpoz4* was completely rescued, suggesting that the two factors must be present in equimolar amounts to transactivate *Dux*, consistent with their acting as heterodimers. However, overexpressing *Dppa2/4* in addition to *Dux* in mESCs carrying a MERVL-GFP reporter did not activate further DUX targets (Fig EV3A and B). Moreover, overexpressing *Dppa2/4* in *Dux* KO mESCs did not rescue the expression of DUX targets, confirming that DPPA2/4 act upstream of DUX (Fig EV3C and D).

**DPPA2 and DPPA4 bind the promoters of *Dux* and other target genes**

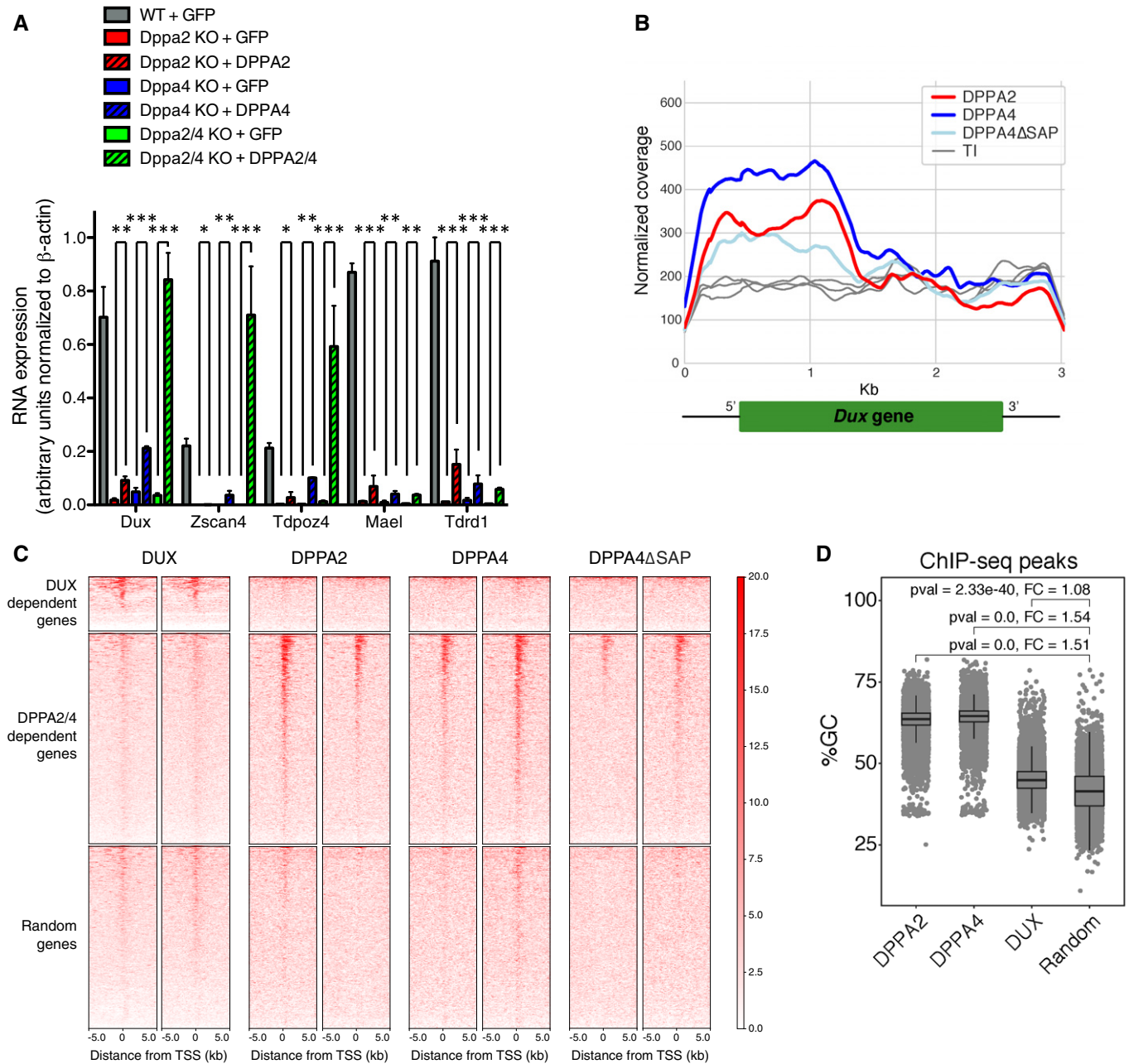
Chromatin immunoprecipitation studies revealed that both DPPA2 and DPPA4 associate with the 5' region of genes downregulated in their absence including *Dux* and that these factors were in contrast not enriched at DUX-recruiting promoters (Figs 3B and C, and EV3E and F). This strongly suggests that DPPA2 and DPPA4 are

direct activators of *Dux* and secondarily induce genes such as *Zscan4* and other DUX-driven targets. Interestingly, a DPPA4 mutant deleted for the SAP domain was still able to bind the 5' end of *Dux*, albeit less strongly than the full-length protein, and also associated with a sizeable fraction of DPPA4-controlled genes, the expression of which it could partly rescue by complementation of *Dppa4* KO mESCs (Fig EV3G). Therefore, the SAP domain is absolutely not essential for the genomic recruitment or for the transactivating function of DPPA4. Finally, DPPA2 and DPPA4 were less enriched at the promoter of *Dux*, *Mael*, and *Tdrd1* in mESCs deleted for the reciprocal paralog, compared with control cells (Fig EV3H). This indicates that DPPA2 and DPPA4 are best recruited jointly at target genes, consistent with the recent demonstration of their heterodimerization potential [17]. We attempted to delineate more precisely the sequence motifs recognized by DPPA2 and DPPA4 and could only determine that the two proteins favor GC-rich regions such as found at the 5' end of *Dux* or CpG islands (Figs 3D and EV4A–C).

**DPPA2 and DPPA4 regulate the expression of young LINE-1s in mESCs**

Upon comparing the transposcriptomes (sum of transposable elements-derived transcripts) of WT and *Dppa2*- and *Dppa4*-deleted mESCs, we found that levels of MERVL-int, L1Md\_T, and L1Md\_A RNAs dramatically dropped in cells depleted for these factors (Figs 4A and B, and EV5A). Transcription of L1Md\_T, but not of L1Md\_A or MERVL, was partly rescued when DPPA4 loss was complemented by ectopically expressing its full-length or truncated forms in the KO cell lines (Fig EV5B). We further determined that, similar to MERVL, L1Md\_T and L1Md\_A were more expressed in the 2C-like subpopulation of mESCs (Fig 4C).

MERVL is an endogenous retrovirus previously identified as a direct target of DUX, but L1Md\_T and L1Md\_A are two evolutionarily recent subfamilies of murine LINE-1 elements, the expression of which was not found to be DUX-dependent [3,18]. In *Dux* KO mESCs, expression of MERVL was completely lost but that of L1Md\_T and L1Md\_A only slightly reduced (Fig EV5C). In contrast, L1Md\_T and L1Md\_A transcript levels markedly dropped when DPPA2 and DPPA4 were depleted from *Dux* KO mESCs by RNA interference (Fig EV5D). Furthermore, chromatin immunoprecipitation analyses found HA-tagged forms of DPPA2 and



**Figure 3. DPPA2 and DPPA4 associate with the promoter of their target genes in mESCs.**

**A** Comparative expression by qPCR of *Dux*, two downstream targets of DUX (*Zscan4* and *Tdpoz4*), and three targets of DPPA2 and DPPA4 independent of DUX (*Mael* and *Tdrd1*) in mESCs depleted of endogenous DPPA2 and DPPA4 and overexpressing ectopically DPPA2, DPPA4, or GFP as a control. Expression was normalized to *Actb*. Bars represent the average and error bars the SD;  $n = 3$ . \* $P \leq 0.05$ , \*\* $P \leq 0.01$ , \*\*\* $P \leq 0.001$ , unpaired  $t$ -test.

**B** Average coverage normalized for sequencing depth of the ChIP-seq signal of DPPA2, DPPA4, or DPPA4 truncated of the SAP domain overexpressed in mESCs in a window of 500 bp around the *Dux* gene ( $n = 2$ ). Total input (TI) is shown in gray. Peaks over the *Dux* gene were called in DPPA2, DPPA4, and DPPA4 $\Delta$ SAP ChIP-seq.

**C** Heatmap showing the distribution of DUX, DPPA2, DPPA4, and DPPA4 $\Delta$ SAP coverage in a  $\pm 5$ -kb window around the TSS of DUX-dependent, DPPA2- and DPPA4-dependent, and random genes in mESCs.

**D** Boxplot/jitterplot representing the percentage of GC nucleotide contents in the peaks from DPPA2 (9,497), DPPA4 (8,239), and DUX (8,874) ChIP, and in a random shuffle of peaks. Box limits, twenty-fifth and seventy-fifth percentiles; lines in the boxes, median. The upper whisker extends from the hinge to the largest value, no further than 1.5 $\times$  the interquartile range (IQR) from the hinge. The lower whisker extends from the hinge to the smallest value, at most 1.5 $\times$  the IQR of the hinge (paired  $t$ -test).

DPPA4 enriched at the 5' end of L1Md\_T and L1Md\_A, but not MERVL-int (Fig 4D and E). Interestingly, the 5' untranslated region of LINE-1 responsible for recruiting DPPA2 and DPPA4 has

a high GC-content [19]. Of note, deleting the SAP domain of DPPA4 reduced its recruitment at L1Md\_A but not L1Md\_T integrants (Fig 4D and E).

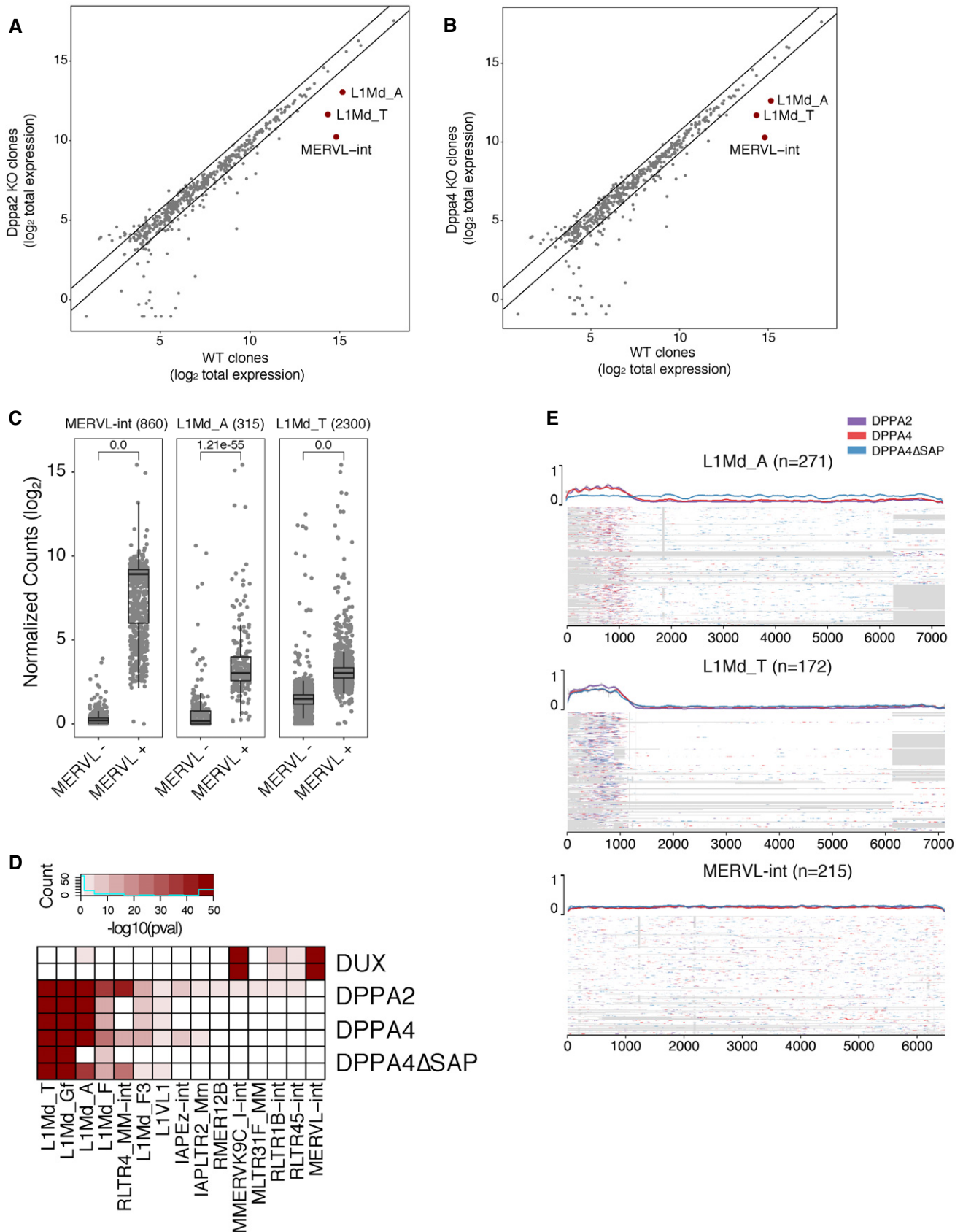


Figure 4.

**Figure 4. DPPA2 and DPPA4 directly regulate expression of young LINE-1 families in mESCs.**

- A, B Total expression of transposable element subfamilies in (A) *Dppa2* KO or (B) *Dppa4* KO compared to WT mESC clones.
- C RNA-seq analysis of MERVL-int ( $n = 860$ ), L1Md\_A ( $n = 315$ ), and L1Md\_T ( $n = 2,300$ ) in mESCs sorted for expression of both Tomato and GFP reporters driven by MERVL and *Zscan4* promoters, respectively, and the double-negative population. Box limits, twenty-fifth and seventy-fifth percentiles; lines in the boxes, median. The upper whisker extends from the hinge to the largest value, no further than 1.5x the interquartile range (IQR) from the hinge. The lower whisker extends from the hinge to the smallest value, at most 1.5x the IQR of the hinge (paired t-test).
- D Heatmap displaying the enrichment of DUX, DPPA2, DPPA4, and DPPA4ΔSAP binding at different transposable element families. Every subfamily enriched ( $P < 0.05$ ) in at least one DPPA2, DPPA4, or DPPA4ΔSAP replicate is shown.
- E MSAPlot of DPPA2, DPPA4, and DPPA4ΔSAP CHIP-seq in mESCs showing enrichment over L1Md\_A, L1Md\_T, and MERVL-int sequences. Gaps are in gray and sequences in white with overlap of color-coded CHIP-seq signals. Upper plot shows average coverage of the signal over the aligned TEs.

**Conclusions**

This work identifies DPPA2 and DPPA4 as activators of *Dux* and LINE-1 retrotransposons induced during murine ZGA and in 2C-like mESCs. The presence of DPPA2 and DPPA4 transcripts at fertilization and the partial requirement of maternal DPPA4 further suggest that the two proteins promote expression of *Dux* and LINE-1 in murine early embryos [9]. We found high levels of *Dppa2* throughout pre-implantation development, while two different isoforms of *Dppa4* were detected: low levels of the full-length form in oocytes and zygotes, and a form lacking the SAP domain expressed from ZGA to blastocyst. While the SAP domain of DPPA4 was found to foster its nuclear localization [9], we observed that DPPA4ΔSAP was still able to bind the promoters and activate expression of some of the gene and transposon targets of the full-length protein, albeit with reduced efficiency. Still, presence of distinct DPPA4 isoforms in the zygote and after cleavage suggests that they fulfill different functions in the totipotent cell and at later stages of pre-implantation development. In *Xenopus*, gastrulation requires the *Dppa2/4* C-terminal domain, whereas the SAP domain is needed for later stages of embryonic development, reminiscent of the differential expression pattern of its murine ortholog [5].

DPPA2 and DPPA4 control both *Dux* and LINE-1 transcription in mESCs. Interestingly, it was recently demonstrated that LINE-1 transcripts are necessary for TRIM28/Nucleolin-mediated repression of *Dux* in mESCs and in pre-implantation embryos [20]. Our results suggest that DPPA2 and DPPA4 influence a negative feedback loop involving *Dux* and its transcriptional repressors, which might explain how *Dux* is expressed as a brief pulse in pre-implantation embryos and in cycling 2C-like mESCs.

How DPPA2 and DPPA4 activate their targets remains to be formally determined. A high enrichment in heterochromatin marks, including DNA methylation and histone 3 lysine 9 dimethylation (H3K9me2), is found at promoters of genes regulated by DPPA4 in mESCs depleted for this factor [9]. Moreover, we found DPPA2 and DPPA4 strongly associated with CpG islands, genomic features localized in regulatory regions and often modulated epigenetically by DNA methylation. Finally, general loss of the repressive chromatin mark histone 3 lysine 9 trimethylation (H3K9me3) was detected in mouse embryonic fibroblasts (MEFs) reprogrammed to induced pluripotent stem cells (iPSCs) when DPPA2 and DPPA4 were ectopically overexpressed [17]. All this suggests that DPPA2 and DPPA4 may bind and remodel the chromatin at the promoter of target genes to create an active environment and prevent the recruitment of repressor complexes.

**Materials and Methods****Cell lines and tissue culture**

J1 mESCs (ATCC) were cultured in feeder-free conditions on 0.1% gelatin-coated tissue culture plates in Dulbecco's modified Eagle's medium (Sigma) containing 15% fetal bovine serum (FBS, HyClone; Fisher Scientific) and supplemented with GlutaMAX (GIBCO), nonessential amino acids (Sigma), 2-mercaptoethanol (GIBCO), and 1,000 U/ml leukemia inhibitory factor (LIF; Millipore). WT and DUX KO E14 mESCs containing the MERVL regulatory sequence driving expression of a 3XturboGFP-PEST [21] were cultured on 0.1% gelatin-coated tissue culture plates in 2i medium [1]. 293T cells were maintained in DMEM supplemented with 10% FCS. All cells were regularly checked for the absence of mycoplasma contamination.

**Plasmids and lentiviral vectors**

Three single-guide RNAs (sgRNAs) targeting sequences flanking *Dppa2* and *Dppa4* (Fig 1A) were cloned into px459 (version 2) using a standard protocol [1]. Table EV1 shows the primers used to clone the sgRNAs. The pLKO.1-puromycin shRNA vectors for *Dppa2* and *Dppa4* knockdown were ordered from Sigma (TRCN0000174599, TRCN0000175923, TRCN0000329372, TRCN0000329374) [1]. *Dppa2* and *Dppa4* cDNAs were both cloned from the genome of J1 mESCs and ordered as codon optimized for expression in mouse cells, and *Dppa4* ΔSAP was cloned from the genome of B62F1 blastocysts in a pDONR221 without STOP codon. The ORFs were then shuttled in a pTRE-3HA, which produces proteins with three C-terminal HA tags. The cDNAs, including *Dux*, followed by HA tags were finally cloned into a pWPTs-GFP HIV1-based transfer vector in place of the GFP reporter using the In-Fusion<sup>®</sup> HD Cloning Kit (Clontech) and the primers shown in Table EV1. pMD2-G encodes the vesicular stomatitis virus G protein (VSV-G). The minimal HIV-1 packaging plasmid 8.9NdsB carrying a double mutation in the capsid protein (P90A/A92E) was used to achieve higher transduction of the lowly permissive mESCs [22].

**Production of lentiviral vectors and transduction and transfection of mammalian cells**

Lentiviral vectors were produced by transfection of 293T cells using polyethylenimine (PEI) (Sigma, Inc.) [22]. To generate stable KDs, mESCs were transduced with empty pLKO.1 vector or vectors containing the shRNA targeting *Dppa2* or *Dppa4* transcripts. Cells were selected with 0.4 μg/ml puromycin starting 1 day after

transduction. To express HA-tagged DPPA2 or DPPA4, mESCs were transduced with the pWPTs-DPPA2 or pWPTs-DPPA4 lentiviral vectors (for ChIP-seq and RNA-seq analyses of Figs 2–4) or transfected with the codon-optimized versions using Lipofectamine 3000 (Thermo Fisher Scientific; for qPCR analysis in Figs 3A and EV3A–D).

### Creation of KO mESC lines

J1 mESCs were co-transfected with px459 plasmids encoding for Cas9, the appropriate sgRNAs, and puromycin resistance cassette by nucleofection (Amaza™ P3 Primary Cell 4D-Nucleofector™ X Kit). Twenty-four hours later, the cells were selected for 48 h with 0.4 µg/ml puromycin, single-cell-cloned by serial dilution, and expanded, and their DNA was extracted to detect the presence of WT and/or KO alleles. Three WT, three homozygous *Dppa2* KO, three homozygous *Dppa4* KO, and three homozygous *Dppa2* and *Dppa4* KO clones were selected and used in this study.

### Fluorescence-activated cell sorting (FACS)

FACS analysis was performed with a BD FACScan system. mESCs containing the MERVL-GFP reporter were subjected to FACS sorting with AriaII (BD Biosciences).

### Standard PCR, RT-PCR, and RNA sequencing

For the genotyping of *Dppa2* and *Dppa4* WT and KO alleles, genomic DNA was extracted with DNeasy Blood & Tissue Kits (QIAGEN) and the specific PCR products were amplified using PCR Master Mix 2X (Thermo Scientific) combined with the appropriate primers (design in Fig 1A; primer sequences in Table EV1).

Total RNA from cell lines was isolated using the High Pure RNA Isolation Kit (Roche). cDNA was prepared with SuperScript II reverse transcriptase (Invitrogen). Primers listed in Table EV1 were used for SYBR Green qPCR (Applied Biosystems). Library preparation and 75-base pair paired-end RNA-seq were performed using standard Illumina procedures for the NextSeq 500 platform. RNA-seq data generated in this study are available on GEO (GSE126621).

### GC-content analysis

GC-content of DPPA2, DPPA4, and DUX peaks was done first by converting bed files to fasta with bedtools suite and then by using a home-made perl script to count DNA bases. For measurement of GC-content in DUX gene, a 200-bp sliding window was used.

### ChIP and ChIP sequencing

ChIP and library preparation were performed as described previously [1]. DPPA2-HA and DPPA4-HA ChIP was done using the anti-HA.11 (Covance) antibody. Sequencing was performed with Illumina NextSeq 500 in 75-bp paired-end reads run. ChIP-seq data generated in this study are available on GEO (GSE126621).

### RNA-seq datasets processing

RNA-seq of *Dppa2/4* KO versus WT and *Dux* KO versus WT mESCs [1] was mapped to mm9 genome using hisat2 aligner [23] for stranded

and paired-end reads with options `-k 5 -rna-strandness RF -seed 42 -p 7`. Counts on genes and TEs were generated using featureCounts [24] with options `-p -s 2 -T 4 -t exon -g gene_id -Q 10`, using a gtf file containing both genes and TEs to avoid ambiguity when assigning reads. For repetitive sequences, an in-house curated version of the mm9 *open-3.2.8* version of *RepeatMasker* database was used (fragmented LTR and internal segments belonging to a single integrant were merged) [25]. Single-cell RNA-seq of 2C-like cells (E-MTAB-5058) datasets was downloaded from GEO [16]. The processing of the single-cell RNA-seq datasets followed a previously published pipeline. Single-cell RNA-seq mouse early embryo development data were reanalyzed from [1].

### RNA-seq analysis

Normalization for sequencing depth and differential gene expression analysis was performed using Voom as it has been implemented in the limma package of Bioconductor, with total number of reads on genes as size factor [1]. TEs overlapping exons or having < 1 read per sample in average were removed from the analysis. To compute total number of reads per TE family/subfamily, counts on all integrants were summed up using multi-mapping read counts with fractions (featureCounts with options `-M -fraction -p -s 2 -T 4 -t exon -g gene_id -Q 0`) to compensate for potential bias in repetitive elements. Gene expression clustering in murine pre-implantation embryos was performed as previously described [1].

### ChIP-seq data processing

ChIP-seq dataset of DUX overexpressed in mESCs (GSE85632) was downloaded from GEO [2]. Reads were mapped to the mouse genome assembly mm9 using Bowtie2 using the sensitive-local mode. MACS2 (the exact parameters are as follows: `macs2 call-peak -t $chipbam -c $tibam -f BAM -g $org -n $name -B -q 0.01 -format BAMPE`) was used to call peaks [1]. To compute the percentage of bound TE integrants in each family, we used bedtools suite.

### Methodology for statistics

Enrichment of TE subfamilies was done using hypergeometric tests, comparing the number of peaks having at least 50% overlap with TEs to the expected number. Enrichment of peaks around TSS also used a hypergeometric test to compare the occurrence of peaks in a subset of TSS to the expected. When the expression data were compared between two conditions, a paired Student's *t*-test was used. To correct for different sample sizes, we used 1,000 subsampling permutations using the smallest sample size to get the median *P*-value. For comparing enrichment between *Dppa2* and *Dppa4* downregulated genes, a gene set enrichment analysis was used with *phenoTest* library from *Bioconductor* with default options.

### Coverage plots

Raw ChIP-seq data were mapped on an index containing only the *Dux* gene using the same parameters as described in the methods



when mapping on the genome. ChIP-seq signals on the locus were extracted from the bigWigs and normalized for sequencing depth (reads per hundred millions when mapped on genome) using the pyBigWig python library. Replicate signals were averaged and then smoothed using a running average of window 250 bp prior to plotting.

### MSAplot

Fasta sequences for the TE families of interest were extracted from the mm9 genome assembly and aligned using the mafft aligner with the following parameters: `-auto -reorder`. Regions in the alignment consisting of more than 95% of gaps were trimmed out. For each integrant in the family, the ChIP-seq signal was extracted from the bam, scaled to the interval [0, 1], and plotted on top of the alignment using python. Finally, the average of the signals was plotted on top of the MSAplot.

**Expanded View** for this article is available online.

### Acknowledgements

We thank Sonia Verp, Sandra Offner, and the Gene Expression and Flow Cytometry Core Facilities (EPFL) for technical assistance. This work was financed through grants from the Swiss National Science Foundation, the Gebert-Rüf Foundation, FP7 MC-ITN INGENIUM (290123), and the European Research Council (ERC 694658) to D.T.

### Author contributions

ADI and DT conceived the project, designed the experiments, analyzed the data, and wrote the manuscript; ADI carried out the experiments; and AC and JD performed the bioinformatics and statistical analyses.

### Conflict of interest

The authors declare that they have no conflict of interest.

## References

- De Iaco A, Planet E, Coluccio A, Verp S, Duc J, Trono D (2017) DUX-family transcription factors regulate zygotic genome activation in placental mammals. *Nat Genet* 49: 941–945
- Hendrickson PG, Dorais JA, Grow EJ, Whiddon JL, Lim JW, Wike CL, Weaver BD, Pflueger C, Emery BR, Wilcox AL et al (2017) Conserved roles of mouse DUX and human DUX4 in activating cleavage-stage genes and MERVL/HERVL retrotransposons. *Nat Genet* 49: 925–934
- Whiddon JL, Langford AT, Wong CJ, Zhong JW, Tapscott SJ (2017) Conservation and innovation in the DUX4-family gene network. *Nat Genet* 49: 935–940
- Jachowicz JW, Bing X, Pontabry J, Boskovic A, Rando OJ, Torres-Padilla ME (2017) LINE-1 activation after fertilization regulates global chromatin accessibility in the early mouse embryo. *Nat Genet* 49: 1502–1510
- Siegel D, Schuff M, Oswald F, Cao Y, Knochel W (2009) Functional dissection of XDppa2/4 structural domains in *Xenopus* development. *Mech Dev* 126: 974–989
- Aravind L, Koonin EV (2000) SAP - a putative DNA-binding motif involved in chromosomal organization. *Trends Biochem Sci* 25: 112–114
- Maldonado-Saldivia J, van den Bergen J, Krouskos M, Gilchrist M, Lee C, Li R, Sinclair AH, Surani MA, Western PS (2007) Dppa2 and Dppa4 are closely linked SAP motif genes restricted to pluripotent cells and the germ line. *Stem Cells* 25: 19–28
- Bortvin A, Eggan K, Skaletsky H, Akutsu H, Berry DL, Yanagimachi R, Page DC, Jaenisch R (2003) Incomplete reactivation of Oct4-related genes in mouse embryos cloned from somatic nuclei. *Development* 130: 1673–1680
- Madan B, Madan V, Weber O, Tropel P, Blum C, Kieffer E, Viville S, Fehling HJ (2009) The pluripotency-associated gene Dppa4 is dispensable for embryonic stem cell identity and germ cell development but essential for embryogenesis. *Mol Cell Biol* 29: 3186–3203
- Nakamura T, Nakagawa M, Ichisaka T, Shiota A, Yamanaka S (2011) Essential roles of ECAT15-2/Dppa2 in functional lung development. *Mol Cell Biol* 31: 4366–4378
- Engelen E, Brandsma JH, Moen MJ, Signorile L, Dekkers DH, Demmers J, Kockx CE, Ozgur Z, van Ijcken WF, van den Berg DL et al (2015) Proteins that bind regulatory regions identified by histone modification chromatin immunoprecipitations and mass spectrometry. *Nat Commun* 6: 7155.
- Masaki H, Nishida T, Kitajima S, Asahina K, Teraoka H (2007) Developmental pluripotency-associated 4 (DPPA4) localized in active chromatin inhibits mouse embryonic stem cell differentiation into a primitive ectoderm lineage. *J Biol Chem* 282: 33034–33042
- Macfarlan TS, Gifford WD, Driscoll S, Lettieri K, Rowe HM, Bonanomi D, Firth A, Singer O, Trono D, Pfaff SL (2012) Embryonic stem cell potency fluctuates with endogenous retrovirus activity. *Nature* 487: 57–63
- Kobayashi H, Sakurai T, Imai M, Takahashi N, Fukuda A, Yayoi O, Sato S, Nakabayashi K, Hata K, Sotomaru Y et al (2012) Contribution of intra-genic DNA methylation in mouse gametic DNA methylomes to establish oocyte-specific heritable marks. *PLoS Genet* 8: e1002440
- Deng Q, Ramskold D, Reinius B, Sandberg R (2014) Single-cell RNA-seq reveals dynamic, random monoallelic gene expression in mammalian cells. *Science* 343: 193–196
- Eckersley-Maslin MA, Svensson V, Krueger C, Stubbs TM, Giehr P, Krueger F, Miragaia RJ, Kyriakopoulos C, Berrens RV, Milagre I et al (2016) MERVL/Zscan4 network activation results in transient genome-wide DNA demethylation of mESCs. *Cell Rep* 17: 179–192
- Hernandez C, Wang Z, Ramazanov B, Tang Y, Mehta S, Dambrot C, Lee YW, Tessema K, Kumar I, Astudillo M et al (2018) Dppa2/4 facilitate epigenetic remodeling during reprogramming to pluripotency. *Cell Stem Cell* 23: 396–411.e8
- Sookdeo A, Hepp CM, McClure MA, Boissinot S (2013) Revisiting the evolution of mouse LINE-1 in the genomic era. *Mobile DNA* 4: 3
- Dai Q, Shen Y, Wang Y, Wang X, Francisco JC, Luo Z, Lin C (2017) Striking a balance: regulation of transposable elements by Zfp281 and Mll2 in mouse embryonic stem cells. *Nucleic Acids Res* 45: 12301–12310
- Percharde M, Lin CJ, Yin Y, Guan J, Peixoto GA, Bulut-Karslioglu A, Biechele S, Huang B, Shen X, Ramalho-Santos M (2018) A LINE1-Nucleolin partnership regulates early development and ESC identity. *Cell* 174:391–405.e19
- Ishichi T, Enriquez-Gasca R, Mizutani E, Boskovic A, Ziegler-Birling C, Rodriguez-Terrones D, Wakayama T, Vaquerizas JM, Torres-Padilla ME (2015) Early embryonic-like cells are induced by downregulating replication-dependent chromatin assembly. *Nat Struct Mol Biol* 22: 662–671

22. De Iaco A, Santoni F, Vannier A, Guipponi M, Antonarakis S, Luban J (2013) TNPO3 protects HIV-1 replication from CPSF6-mediated capsid stabilization in the host cell cytoplasm. *Retrovirology* 10: 20
23. Kim D, Langmead B, Salzberg SL (2015) HISAT: a fast spliced aligner with low memory requirements. *Nat Methods* 12: 357–360
24. Liao Y, Smyth GK, Shi W (2014) featureCounts: an efficient general purpose program for assigning sequence reads to genomic features. *Bioinformatics* 30: 923–930
25. Ecco G, Cassano M, Kauzlaric A, Duc J, Coluccio A, Offner S, Imbeault M, Rowe HM, Turelli P, Trono D (2016) Transposable elements and their

KRAB-ZFP controllers regulate gene expression in adult tissues. *Dev Cell* 36: 611–623



**License:** This is an open access article under the terms of the Creative Commons Attribution-NonCommercial-NoDeriv 4.0 License, which permits use and distribution in any medium, provided the original work is properly cited, the use is non-commercial and no modifications or adaptations are made.