



Cocoa Diet and Antibody Immune Response in Preclinical Studies

Mariona Camps-Bossacoma^{1,2}, Malen Massot-Cladera^{1,2}, Mar Abril-Gil^{1,2}, Angels Franch^{1,2}, Francisco J. Pérez-Cano^{1,2} and Margarida Castell^{1,2*}

¹Faculty of Pharmacy and Food Science, Department of Biochemistry and Physiology, Section of Physiology, University of Barcelona, Barcelona, Spain, ²Nutrition and Food Safety Research Institute (INSA-UB), Santa Coloma de Gramenet, Spain

OPEN ACCESS

Edited by:

Mauro Serafini,
University of Teramo, Italy

Reviewed by:

Mourad Aribi,
University of Tlemcen, Algeria
Alberto Finamore,
Council for Agricultural Research
and Economics-Food
and Nutrition Research
Center, Italy

*Correspondence:

Margarida Castell
margaridacastell@ub.edu

Specialty section:

This article was submitted to
Nutritional Immunology,
a section of the journal
Frontiers in Nutrition

Received: 27 March 2017

Accepted: 06 June 2017

Published: 27 June 2017

Citation:

Camps-Bossacoma M, Massot-Cladera M, Abril-Gil M, Franch A, Pérez-Cano FJ and Castell M (2017) Cocoa Diet and Antibody Immune Response in Preclinical Studies. *Front. Nutr.* 4:28. doi: 10.3389/fnut.2017.00028

The ability of cocoa to interact with the immune system *in vitro* and *in vivo* has been described. In the latter context, a cocoa-enriched diet in healthy rats was able to modify the immune system's functionality. This fact could be observed in the composition and functionality of lymphoid tissues, such as the thymus, spleen, and lymph nodes. Consequently, immune effector mechanisms, such as antibody synthesis, were modified. A cocoa-enriched diet in young rats was able to attenuate the serum levels of immunoglobulin (Ig) G, IgM, and IgA and also the intestinal IgM and IgA secretion. Moreover, in immunized rats, the intake of cocoa decreased specific IgG1, IgG2a, IgG2c, and IgM concentrations in serum. This immune-regulator potential was then tested in disease models in which antibodies play a pathogenic role. A cocoa-enriched diet was able to partially prevent the synthesis of autoantibodies in a model of autoimmune arthritis in rats and was also able to protect against IgE and T helper 2-related antibody synthesis in two rat models of allergy. Likewise, a cocoa-enriched diet prevented an oral sensitization process in young rats. In this review, we will focus on the influence of cocoa on the acquired branch of the immune function. Therefore, we will focus on how a cocoa diet influences lymphocyte function both in the systemic and intestinal immune system. Likewise, its potential role in preventing some antibody-induced immune diseases is also included. Although further studies must characterize the particular cocoa components responsible for such effects and nutritional studies in humans need to be carried out, cocoa has potential as a nutraceutical agent in some hypersensitivity status.

Keywords: gut-associated lymphoid tissue, IgA, IgG, IgM, immunoregulator, lymph nodes, spleen, tolerance

INTRODUCTION

Antibody response is a kind of acquired immune response produced by complex interactions between several types of immune cells after the entry of an antigen into the body. In brief, when dendritic cells come into contact with an antigen in the skin or the mucosa, they become antigen-presenting cells and will be in charge of finding specific helper (Th) cells in order to trigger an acquired immune response (1). Activated specific Th cells will differentiate into effector T cells that, by means of different patterns of cytokines, will enhance the function of cells, such as B lymphocytes, macrophages, natural killer (NK) cells, cytotoxic T (Tc) lymphocytes, mast cells, or eosinophils. The activation of B cells, mainly related to Th2-immune response, will produce the formation of plasma cells that will eventually synthesize antibodies against the triggering antigen (1). In addition, inside the germinal centers of the secondary lymphoid tissues, another kind of antigen presentation occurs. Follicular dendritic cells (FDC) retain the native antigen that could prime

B cells to synthesized specific antibodies (2, 3). The FDC can form immune complex-coated bodies known as iccosomes that could also affect B cell activation, maturation, and maintenance (4). Whereas antibodies will neutralize or facilitate antigen destruction, sometimes, such as in hypersensitivity and autoimmune reactions, they could have a harmful effect on the body.

Although the earliest evidence for the medical use of cocoa was found in Mesoamerican civilizations (5), nowadays, the healthy properties of cocoa and its derivatives are re-emerging. In addition to the effects of cocoa on cardiovascular health (6, 7), the nervous system (8), and cancer (9–11), cocoa also has an effect on the immune system. The immunomodulatory properties of cocoa include its potential anti-inflammatory role, demonstrated in both *in vitro* and *in vivo* studies (12–14). However, only few clinical studies with this aim have been carried out, and recently it was suggested that there is scarce evidence of the anti-inflammatory effects of cocoa consumption in humans (15). Nevertheless, researchers in this field have joined on several occasions to discuss in depth the effects of chocolate and cocoa on medicine and have demonstrated the increasing emergence of cocoa as a diet compound able to prevent some diseases, or even being a coadjuvant in some therapies (16, 17). In this review, we will focus on the influence of cocoa on the acquired branch of the immune function. Therefore, we will focus on how a cocoa diet influences lymphocyte function both in the systemic and intestinal immune system. Likewise its potential role in preventing some antibody-induced immune diseases is also included.

COCOA INFLUENCES SYSTEMIC ANTIBODY SYNTHESIS

Preclinical studies performed 10 years ago showed for the first time the *in vivo* influence of a cocoa diet on the immune system (14, 18). These studies were carried out in young rats that were fed a diet containing 10% cocoa or in rats that were orally administered with a dose equivalent to 4% cocoa in food intake for 3 weeks. Results showed that the 10% cocoa-enriched diet, but not the 4% dose, was able to decrease serum immunoglobulin (Ig) G, IgM, and IgA concentrations (18) (**Table 1**). A further analysis of IgG isotypes showed that 3-week-old rats fed a 10% cocoa diet for 3 weeks resulted in attenuated levels of IgG2b antibodies but increased levels of IgG2a (19) (**Table 1**). However, in a study in which the cocoa diet was given later, at 6 weeks of age, the 10% cocoa-enriched diet was associated with lower values of serum IgG2a but higher serum IgG2c concentrations than those present in animals fed the standard diet (20) (**Table 1**). Moreover, it was observed that the minimum dose to achieve such an effect was 5% cocoa in the diet (20) and, at any rat age, a 5 or 10% cocoa diet attenuated the serum levels of IgM and IgA (19, 20), the effects being clearer when animals were younger and the diet lasted longer. Therefore, these studies in rats showed that a cocoa diet influences systemic immunoglobulin production but the effect depends on the antibody isotype, the age of the animal, and the length of the cocoa intervention.

TABLE 1 | Summary of the effects of cocoa diet in serum immunoglobulins and specific antibodies in healthy rats.

Strain	Initial age (weeks)	Cocoa dose	Length of the study (weeks)	Results	Reference
Wistar rats	3	4% by oral gavage	3	=IgG =IgM =IgA	(18)
		10% in the food	3	↓IgG ↓IgM ↓IgA	
Wistar rats	6	2% in the food	3	=IgG1, IgG2a, IgG2b, IgG2c =IgM =IgA	(20)
		5% in the food	3	=IgG1, IgG2b, ↓IgG2a, ↑IgG2c =IgM =IgA	
		10% in the food	3	=IgG1, IgG2b, IgG2c, ↓IgG2a ↓IgM =IgA	
Wistar rats	4	10% in the food	7	=IgG1, IgG2a, IgG2c, ↓IgG2b ↓IgM ↓IgA	(19)
Wistar rats	3	4% in the food	9	=Specific IgG2a, IgG2b ↓Specific IgG1, IgG2c ↓Specific IgM	(21)
		10% in the food	9	↓Specific IgG1, IgG2a, IgG2c ↑Specific IgG2b ↓Specific IgM	

Arrows indicate increases or decreases, equals sign means no changes.
Ig, immunoglobulins.

Apart from the cocoa's influence on basal serum immunoglobulin levels, it was interesting to shed some light on the antibody response in rats after a specific challenge, i.e., in immunized rats. In these conditions, animals were fed cocoa before and during an immunization process, and the overall synthesis of specific antibodies was also lowered (21) (**Table 1**). Specifically, the accurate analysis of antibodies revealed that the most attenuated isotypes were specific IgM, IgG1, IgG2a, and IgG2c antibodies, whereas specific IgG2b concentrations held steady or even increased with the 10% cocoa diet. As IgG rat isotypes can be associated with Th1 (IgG2b) or Th2 (IgG1 and IgG2a) immune response (22), these results may suggest a regulatory effect of cocoa in Th2-immune responses. This lowering effect on specific IgG1 and IgG2a, and therefore on Th2-related response, could be associated with cocoa polyphenols given that other polyphenols, such as genistein, chrysin, and apigenin (23, 24), and those from apple or soybean caused similar results (23, 25).

After establishing cocoa's influence on immunoglobulin synthesis, the reason why this diet produced such an effect remained to be studied.

COCOA INFLUENCES COMPOSITION AND FUNCTIONALITY OF PRIMARY AND SECONDARY LYMPHOID TISSUES

To ascertain the mechanisms induced by cocoa on the antibody immune response, lymphoid tissue composition and lymphocyte functionality were then determined. In addition, as cocoa intake can interact with gut-associated lymphoid tissue (GALT), several investigations were carried out to ascertain the influence of cocoa in this particular compartment of the immune system. Preclinical studies carried out in rats demonstrated that a cocoa diet modifies lymphoid tissue composition and function (13). Lymphoid tissues are considered as primary or secondary depending on whether they are devoted either to the formation of the lymphocyte repertoire or to the development of the immune response, respectively (26). Thymus is a primary lymphoid tissue where T-cell maturation takes place, whereas lymph nodes, spleen, and mucosal lymphoid tissue belong to the secondary lymphoid tissue category (27).

Cocoa and Systemic Lymphoid Tissue Composition

It was demonstrated that Wistar rats receiving a 10% cocoa diet for 3 weeks accumulate cocoa polyphenol metabolites in immune tissues, such as the thymus, lymph nodes, and spleen (28). In particular, the highest accumulation was in the thymus, where phenotypic changes were found due to the diet. In particular, cocoa intake resulted in an enhancement of the progression of immature thymocytes (those with low expression of the $\alpha\beta$ T-cell receptor—TCR $\alpha\beta^-$, and expressing or non-expressing the clusters of differentiation CD4 and CD8, i.e., TCR $\alpha\beta^{\text{low}}$ CD4 $^-$ CD8 $^-$ or TCR $\alpha\beta^{\text{low}}$ CD4 $^+$ CD8 $^+$) toward more mature stages (TCR $\alpha\beta^{\text{high}}$ CD4 $^+$ CD8 $^-$) (29) (**Table 2**). In spite of this increase in CD4 $^+$ (Th) cells in the thymus, the analysis of a

secondary lymphoid tissue, such as the spleen, revealed that a 10% cocoa diet in young rats for 3 weeks increased the proportion of spleen B cells and decreased that of Th lymphocytes (18) (**Table 2**).

Lymph nodes were also affected by a cocoa diet. In particular, in mesenteric lymph nodes, a cocoa-enriched diet for 3 or 4 weeks in rats increased the proportion of innate cytotoxic lymphocytes, such as cells expressing $\gamma\delta$ T-cell receptor (TCR $\gamma\delta^+$) and NK cells, and also that of the Tc lymphocytes and B cells, whereas the proportion of Th cells decreased (30, 31) (**Table 2**). These effects were only produced by a 10% cocoa diet whereas a 4% cocoa dose was insufficient to influence the phenotype of mesenteric lymph nodes (30). Similarly, the intake of a 10% cocoa-enriched diet given to rats for 6 weeks decreased the proportion of TCR $\alpha\beta^+$ cells but did not modify that of regulatory T cells (Treg) in inguinal lymph nodes in rats (32) (**Table 2**).

A more in-depth analysis of lymphocytes in mesenteric lymph nodes revealed that the increase of TCR $\gamma\delta^+$ cells was attributed to the presence of a higher amount of CD8 $\alpha\alpha^+$ cells, a typical intestinal phenotype, which could be due to the migration of this cellular type from the intestine (34). The increase of Tc cells in mesenteric lymph nodes was accompanied by a higher proportion of activated cells (CD25 $^+$ CD8 $^+$ cells) and cells expressing the αE -integrin (CD103 $^+$ CD8 $^+$ cells) and a lower proportion of cells bearing L-selectin (CD62L $^+$ CD8 $^+$ cells) (31) (**Table 2**). CD103 is a subunit of the αE -integrin that can mediate cell adhesion and migration to the gut (35), whereas L-selectin is involved in lymphocyte rolling on the endothelium and the homing to secondary lymphoid tissues (36). These results could mean that the cocoa diet decreased the arrival of blood lymphocytes to mesenteric lymph nodes whereas it may favor intestinal cells entering. As cocoa compounds can reach the small intestine and even the colon (37, 38), they can affect the intestinal lymphocytes and promote their migration to mesenteric lymph nodes.

Overall, the increased proportion of CD8 $\alpha\alpha^+$ TCR $\gamma\delta^+$ cells, NK cells, and CD103 $^+$ Tc cells in mesenteric lymph nodes could be involved in cocoa's influence on antibody immune response. TCR $\gamma\delta^+$ cells have been associated with an attenuating effect on the synthesis of antibodies (39), and NK cells could also contribute to the regulation of antibody synthesis (40). Moreover, CD103 $^+$ cells have been associated with a regulatory function given that their proportion increased after treatment with immunosuppressive agents (41).

After feeding a cocoa-enriched diet, cocoa flavonoid metabolites are stored in the lymphoid tissues (thymus, lymph nodes, and spleen) as well as in the liver. In fact, epicatechin metabolites have been reported to be accumulated in concentrations twofold higher in the thymus, testes, and liver than in lymph nodes and spleen (28). With regard to the liver, the 10% cocoa intake in rats enhanced hepatic antioxidant capacity, without modifying hepatic superoxide dismutase and catalase activities (29).

Cocoa and Lymphocyte Function

The development of the acquired immune response implies the involvement of complex interactions between immune cells

TABLE 2 | Summary of the effects of cocoa diet in lymphocyte composition of lymphoid tissues.

Lymphoid tissue	Cocoa dose	Length of the diet (weeks)	Results (% cells)	Reference
Thymus	10% in the food	3	↓TCRαβ ^{low} CD4 ⁻ CD8 ⁻ ↓TCRαβ ^{low} CD4 ⁺ CD8 ⁺ ↑TCRαβ ^{high} CD4 ⁺ CD8 ⁻	(29)
Spleen	4% by oral gavage 10% in the food	3	No changes ↑B ↓Th	(18)
Lymph nodes	4% by oral gavage 10% in the food	3	No changes ↑TCRγδ ⁺ ↓Th ↑Tc	(30)
	10% in the food	4	↑NK ↑B ↓TCRαβ ⁺ ↑TCRγδ ⁺ (↑CD8αα ⁺) ↓Th (↓CD62L ⁺) ↑Tc (↑CD25 ⁺ , ↑CD103 ⁺ , ↓CD62L ⁺)	(31)
	10% in the food	6	↓TCRαβ ⁺ ↓Th ↑Tc =Treg	(32)
Peyer's patches	4% by oral gavage 10% in the food	3	No changes ↑B ↓TCRαβ ⁺ ↑TCRγδ ⁺ ↓Th	(30)
	10% in the food	4	↑TCRγδ ⁺ ↑NKT ↓Th (↑CD25 ⁺ , ↑CD103 ⁺ , ↓CD62L ⁺) =Tc (↑CD103 ⁺)	(33)
Intestinal intraepithelium	10% in the food	4	↑TCRγδ ⁺ ↑NK ↓TLR4 ⁺ ↑CD4 ⁺ CD103 ⁺	(33)
Intestinal lamina propria	10% in the food	4	↓NKT ↓IgA ⁺	(33)

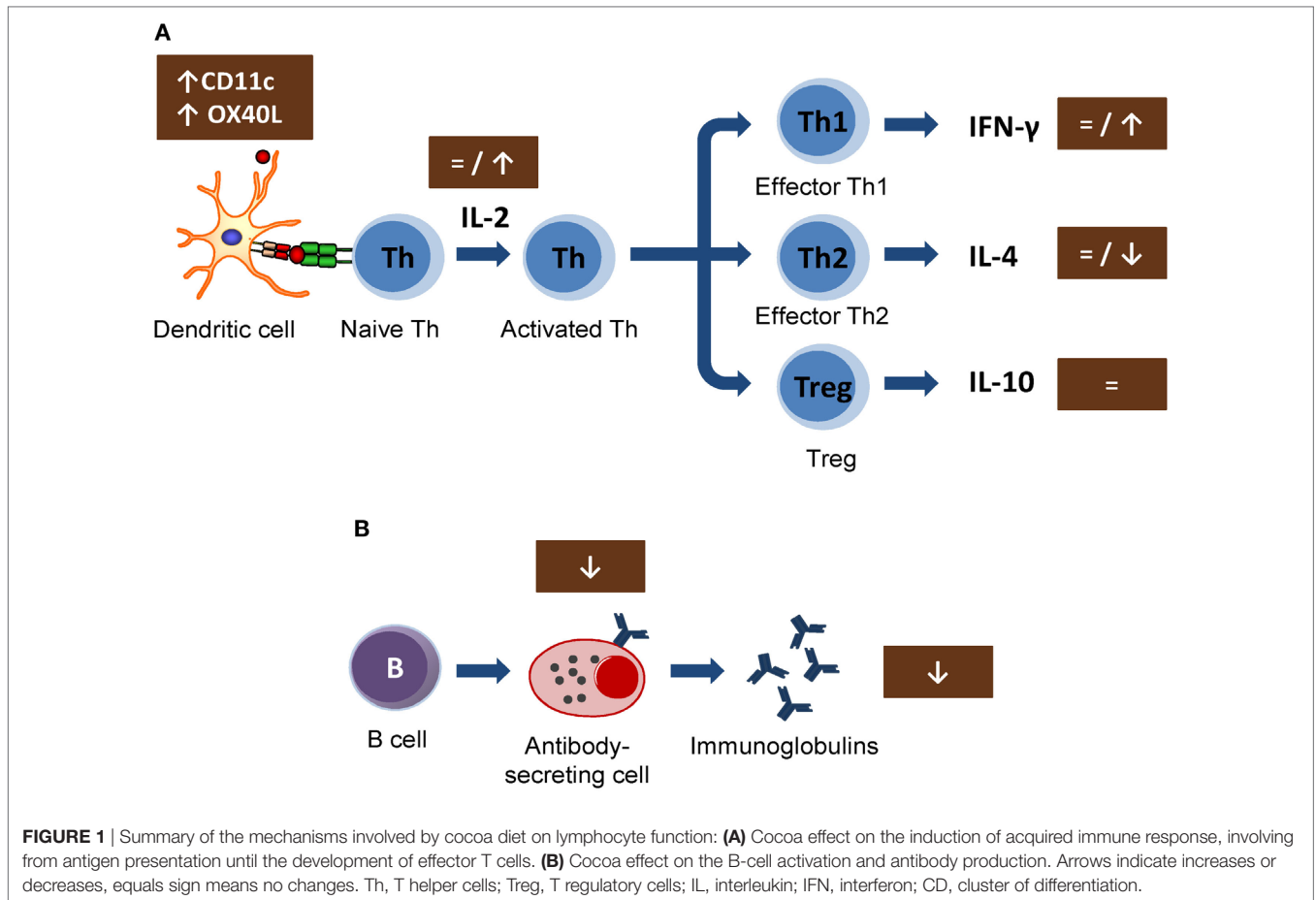
Arrows indicate increases or decreases, equals sign means no changes.

CD, cluster of differentiation; TCRαβ^{low}, cells with low expression of αβ T-cell receptor; Th, T helper lymphocytes; Tc, T cytotoxic lymphocytes; TCRγδ⁺, cells with γδ T-cell receptor; NK, natural killer cells; NKT, natural killer T cells; Treg, T regulatory cells; TLR, toll-like receptor; Ig, immunoglobulin.

by means of particular surface molecules and the secretion of cytokines. The gene or protein expression of those molecules involved in the immune synapses, as well as cytokines and other molecules secreted by immune cells, can be evaluated.

In vitro studies carried out in lymphoid cell lines showed the ability of cocoa to reduce the synthesis of interleukin 2 (IL-2) involved in early T lymphocyte proliferation (42, 43). This cytokine is mainly produced by Th cells after antigen activation (44) and plays a crucial role in immune response, enhancing Tc cell, NK cell cytotoxic activities, T cell differentiation, and stimulating the proliferation and the antibody synthesis (45). These effects could be responsible for the cocoa downregulation of the antibody synthesis. However, the results obtained *in vivo* on IL-2 secretion or lymphocyte proliferation could not confirm such a mechanism (18, 21, 30) (Figure 1A). In particular, IL-2 secretion was not modified in spleen cells from rats fed 10% cocoa for 3 weeks, even though lymphocyte proliferation increased

(18). On the other hand, higher or unmodified amounts of IL-2 secretion were detected after the stimulation of lymph node cells of rats fed a 10% cocoa diet for 3 or 9 weeks (21, 30). Therefore, the interaction of a cocoa diet in the initial phases of immune activation seems not to explain the attenuating effect on antibody synthesis. However, a recent study on the gene expression of mesenteric lymph node cells shows that certain molecules present on antigen-presenting cells (dendritic cells) were modified by this diet. In particular, a cocoa diet increased the gene expression of CD11c and OX40L (31) (Figure 1A). It has been suggested that, in a model of oral sensitization, a subset of dendritic cells (CD11c⁺, CD103⁺, and CD8⁺) that migrates and activates in the mesenteric lymph nodes seems responsible for the Th2 polarization in this model (46). OX40L–OX40 interaction has been related to follicular Th cells and promotes the generation of Th2 response during antigen presentation (47, 48), and it was increased in an oral sensitization process (31). Despite these results, the cocoa



diet attenuated the antibody synthesis and, therefore, this diet must interact with downstream pathways of the Th2-immune responses that would eventually inhibit antibody synthesis.

In general, the cytokine pattern secreted by activated lymphocytes reveals the stimulation of Th1, Th2, Th17, or Treg cells (49). Interferon γ (IFN- γ) is the most representative cytokine in Th1 activation (50). No changes were detected either in serum levels of IFN- γ in rats fed cocoa for 4 weeks (32) or in the secretion of IFN- γ by activated splenocytes or lymph node cells from rats fed a cocoa diet for 3 weeks (18) or 4 weeks (31). Nevertheless, an increase of IFN- γ was observed in lymph node lymphocytes from rats fed a cocoa diet for 8 weeks (21) (**Figure 1A**). Therefore, it seems that a cocoa intake over longer periods promotes Th1 immune response.

More interesting results were found in IL-4, the most representative Th2 cytokine (51). A reduction of IL-4 was found in activated lymph node cells from rats fed cocoa for 3 weeks (30) and in splenocytes from rats fed cocoa for 3 or 8 weeks (18, 21). However, no changes in IL-4 were found after 4 weeks of nutritional intervention (31). On the other hand, this downregulation on IL-4 secretion did not match with previous data *in vitro* (42, 43, 52) but it partially explains the down-modulatory role of the cocoa diet on antibody synthesis (**Figure 1A**). IL-4 promotes IgE upregulation and increases intestinal permeability (53, 54); therefore, the decrease in IL-4,

along with the TCR $\gamma\delta^+$ cell increase induced by the cocoa diet, may be beneficial in reducing certain stages of hypersensitivity, such as food allergy. However, some reports focused on IL-10, a regulatory cytokine (55), did not detect any modification by the 10% cocoa diet (30, 31).

The effects of cocoa lowering IL-4 secretion in some lymphocytes populations agree with those found when the specific antibody-secreting cells after an immunization were enumerated. A significant decrease in the specific IgG-secreting cell numbers was reported by 5 and 10% cocoa diets, either in spleen or lymph node tissues, although no changes were observed in specific IgM-secreting cells (21) (**Figure 1B**). In summary, a cocoa-enriched diet plays an immune-regulatory role in the antibody immune response to an antigen that involves a lower number of specific antibody-secreting cells and, therefore, a decrease in antibody synthesis.

COCOA INTAKE INFLUENCES INTESTINAL IMMUNE SYSTEM

Cocoa Intake and Intestinal Immunoglobulins

Several years ago, Ramiro-Puig et al. first demonstrated that a cocoa-enriched diet influences the GALT by means of the

modulation of the intestinal secretory IgA (S-IgA) (30). Feeding just a 4% cocoa-enriched diet caused a decrease in the fecal S-IgA levels in the second week of the diet, but they were restored at the end of the third one. The 10% cocoa intervention caused lower fecal S-IgA secretion throughout the study (30), and this effect remained when the diet was maintained for 7 weeks (19). However, when a dose–effect study was performed with diets containing 2, 5, or 10% cocoa, the 2% diet was not enough to modify intestinal immunoglobulins (20). With regards to the gut wash—a typical sample used to evaluate intestinal immunoglobulins that consists of incubating the intestine with saline buffer at 37°C in a shaker for a few minutes to allow the release of the mucosa-linked antibodies—a lower secretion of S-IgA and S-IgM was detected (19, 20, 30, 56). These results evidence a lack of the S-IgM compensatory mechanism in certain states of S-IgA deficiency (57), probably because cocoa is also acting on S-IgM. Other studies have confirmed the previous attenuating effect of a 10% cocoa diet on S-IgA levels both in fecal samples and in gut washes (31, 58). Moreover, the immunoglobulin content has also been determined in intestinal tissues, such as Peyer's patches (PP) and mesenteric lymph nodes; and, in both tissues, the 10% cocoa diet for 3 weeks was able to decrease the levels of IgA and IgM (56).

The downregulation of intestinal immunoglobulins produced by a cocoa diet may be due to the influence of some cocoa compounds on the complex immune response developed in the GALT. This immune compartment includes inductive sites (PP and mesenteric lymph nodes) and effector sites [lamina propria (LPL) and intraepithelial lymphocytes (IEL)] (59). As explained, cocoa intake induced some changes in mesenteric lymph nodes, but the cocoa effect is not only restricted to that particular compartment. Therefore, further studies were then focused on looking in more depth the effect of a cocoa diet on PP as well as LPL and IEL.

Cocoa Intake and Lymphocyte Composition in Small Intestine and Colon

The attenuation of serum or intestinal immunoglobulin synthesis may be the result of multitude pathways, but the reduction of mucosal IgA observed after cocoa dietary intervention may possibly involve specific mechanisms located at the intestinal site.

The rat intake of 10% cocoa for 4 weeks modified the composition of lymphocytes in the PP and in the intraepithelial compartment whereas no modifications were seen in LPL (33) (Table 2). With regard to PP, cocoa-enriched diets were able to reduce the proportion of TCR $\alpha\beta^+$ T cells and to increase the proportion of B lymphocytes and TCR $\gamma\delta^+$ cells (30, 33), results that agree with changes detected in the mesenteric lymph nodes (30, 31). Analyzing in depth TCR $\alpha\beta^+$ cells in the intestine, the cocoa diet decreased the proportion of Th cells and increased that of natural killer T cells (NKT). In addition, after cocoa intake, PP also had higher proportions of CD4 $^+$ CD25 $^+$ cells, CD4 $^+$ CD103 $^+$ cells, CD8 $^+$ CD103 $^+$ cells, and CD4 $^+$ CD62L $^+$ cells. Apart from the influence of cocoa intake on PP composition, the intraepithelial compartment was also affected by this diet.

In IEL from the small intestine of rats fed cocoa, there was a higher percentage of TCR $\gamma\delta^+$ cells (both CD8 $\alpha\alpha^+$ and CD8 $\alpha\beta^+$) and NK cells (33).

In summary, in the GALT, the lower production of intestinal antibodies was accompanied by a relative increase in B cell numbers and a relative decrease in TCR $\alpha\beta^+$ or Th cell numbers in the inductive sites (mesenteric lymph nodes and PP). These results suggest that the antibody synthesis in B cells might be depleted by a lower stimulation from Th cells and/or a higher regulatory effect induced by cells, such as TCR $\gamma\delta^+$, NK, NKT, CD4 $^+$ CD25 $^+$, CD4 $^+$ CD103 $^+$, CD8 $^+$ CD103 $^+$, and CD4 $^+$ CD62L $^+$, which is in agreement with the role of some of these cells in the regulation of the antibody synthesis (25, 40, 60). In whatever way the activation and differentiation of intestinal B cells was attenuated, a depletion of the high-capacity IgA-secretory cells was produced as reported when they were counted by Enzyme-Linked ImmunoSpot in PP (30) or by an immunofluorescence analysis in the small intestine lamina propria (33). These results agree with a lower IgA gene expression in PP and small intestine seen after 4 and 7 weeks of cocoa intake (19, 33).

Effects of Cocoa Diet on T Cell-Dependent Intestinal Immune Function

The gene expression of molecules involved in the intestinal immune response can shed some light on the mechanisms induced by cocoa on the regulation of the intestinal immune system. In this context, the mRNA levels of IgA, transforming growth factor (TGF) β 1, IL-6, CD40, C–C chemokine receptor (CCR) 9, retinoic acid receptor (RAR) α , and RAR β have been reported in GALT tissues, such as mesenteric lymph nodes, PP, and small intestine after 3 or 7 weeks of a cocoa diet (19, 20).

CD40 is involved in the interaction between B and Th cells to begin the antibody immune response (61), and cocoa intake did not modify the expression of this molecule in any of the tissues considered (19, 20) suggesting that cocoa had no influence in this phase of the antibody synthesis. The main pathway that brings differentiation of B cells into IgA-secreting cells takes place in PP or mesenteric lymph nodes (62) and depends on cytokines, such as TGF- β 1 and IL-6, among others (63). The 10% cocoa diet significantly decreased the TGF- β 1 expression in the small intestine after 3 and 4 weeks (20, 33), although no changes were found after 7 weeks of nutritional intervention (19) (Figure 2). On the contrary, the longest nutritional intervention, but not the shortest one, was able to downregulate the IL-6 synthesis in mesenteric lymph nodes (19, 20). Therefore, the effect on these two cytokines, TGF- β 1 and IL-6, involved in the S-IgA secretion at different periods (64), might be partly responsible for the downregulatory effect of cocoa. Neither TGF- β 1 nor IgA gene expressions were downregulated by the 5% cocoa diet (20), which also caused a reduction in intestinal S-IgA, indicating that additional mechanisms may be interfering in the intestinal S-IgA content.

The next stage occurs when the activated B cells leave the inductor sites (PP and mesenteric lymph nodes) and home to the effector sites (i.e., lamina propria), where the differentiation

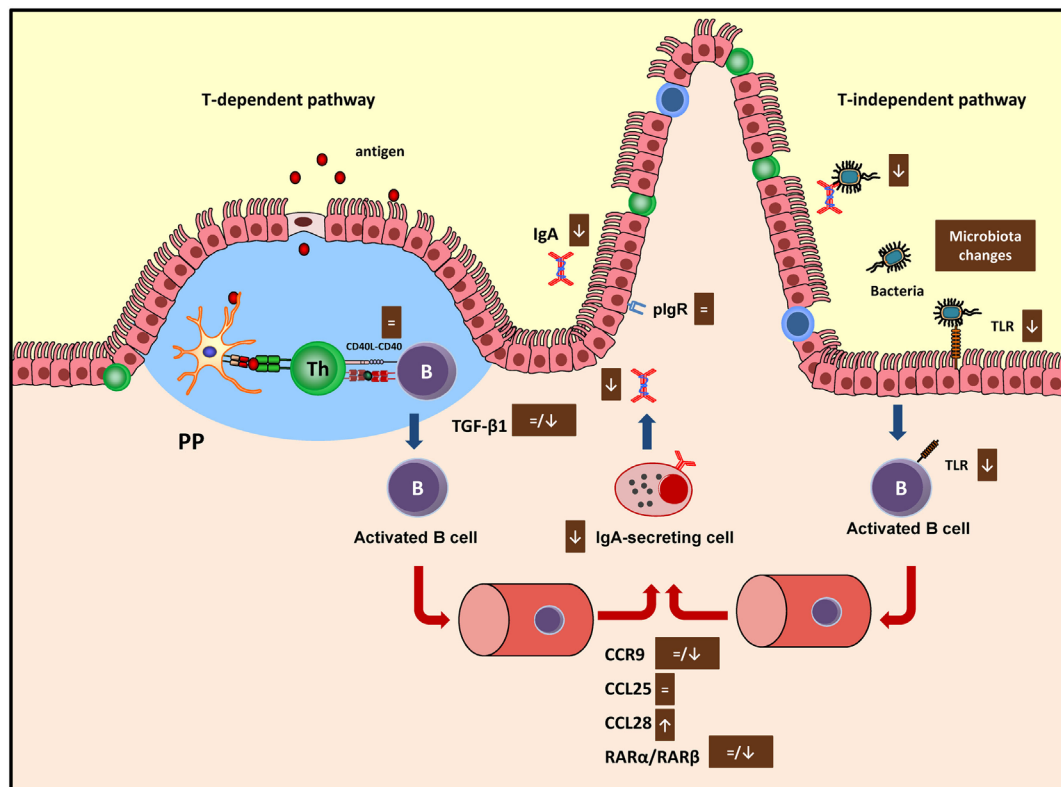


FIGURE 2 | Summary of the mechanisms involved by cocoa diet on intestinal immune function in both T-dependent and T-independent pathways. Arrows indicate increases or decreases, equals sign means no changes. Ig, immunoglobulin; PP, Peyer's patches; pIgR, polymeric immunoglobulin receptor; TLR, toll-like receptor; CCR, C-C chemokine receptor.

into IgA plasma cells takes place (65). Intestinal homing is regulated, among others, by chemokine-mediated interactions including the chemokine receptor CCR9, which binds to CCL25 and the CCL28 chemokines in the intestine (66). While 3 weeks of diet did not modify the expression of the CCR9 receptor nor the CCL25 but did increase the expression of CCL28 in the small intestine (20), 7 weeks of cocoa diet resulted in a downregulation of CCR9 and CCL28 gene expression in the same compartment (19) (**Figure 2**). In addition, retinoic acid produced by intestinal dendritic cells also plays a key role in gut homing (66) through the interaction with nuclear RAR (67). The gene expression of both RAR α and RAR β was not modified in the intestinal tissue of rats fed cocoa for 3 weeks (20) but both decreased after 7 weeks (19) (**Figure 2**). Overall, these results could indicate that after being fed a cocoa diet over a long time there was an impairment of the arrival of IgA-secreting cells to the intestine because of the lack of gut-homing receptors observed. However, they do not explain the early decrease in S-IgA that was observed.

Finally, delivering IgA into the intestinal lumen depends on the transmembrane epithelial protein polymeric immunoglobulin receptor (pIgR) (68). This receptor was not modified by the cocoa intake (20), thus indicating that cocoa-induced S-IgA reduction did not occur as a consequence of a decreased transport across the epithelium.

Effects of Cocoa Diet on T Cell-Independent Intestinal Immune Function

Apart from these IgA-secreting mechanisms that depend on T-cell activation, IgA⁺ B cells can be alternatively generated in a T-cell-independent manner involving toll-like receptor (TLR) signaling.

The gene and protein expression of other TLR has been modified both in the inductive sites of GALT (PP and mesenteric lymph nodes) and the effector sites (intestinal wall) after cocoa intake (19, 20, 33). In this context, among other components present in the cocoa, flavonoids have been suggested as dietary factors able to modulate TLR-mediated signaling pathways (69). TLR pathways can be modulated by flavonoids at different levels, and there are evidences of several flavonoids interfering at gene/protein expression level, in subsequent activation pathways such as the myeloid differentiation primary response 88 (MyD88), TIR-domain-containing adaptor protein inducing interferon beta (TRIF), and even downstream-associated signal transduction cascades (i.e., MAPK) (69). In this sense, alternative mechanisms in TLR regulation by cocoa flavonoids have been also suggested such as the direct modulation of their intracellular negative regulators such as the interleukin-1 receptor associated kinase (IRAK), toll interacting protein (TOLLIP), etc. To date, *in vitro* studies demonstrate the upregulation of IRAK-M by procyanidin dimer B2 (70), similarly to the effect described by other flavonoids

like epigallocatechin-galate in TOLLIP expression (70). Anyway, the synergistic action of cocoa on all these TLR-activating signaling could also contribute to the attenuation of S-IgA synthesis.

Cocoa intake for 4 weeks reduced the proportion of TLR4⁺ cells in the IEL compartment (33) which agrees with a decrease of TLR4 mRNA in small intestine observed in previous studies (Figure 2). Nonetheless, higher TLR4 gene expression was found in PP (19). The TLR4 is the receptor of bacterial endotoxin lipopolysaccharide, and its signaling has implications for IgA production (71), becoming another pathway to attenuate intestinal S-IgA synthesis.

Toll-like receptors are expressed preferentially in tissues that are in constant contact with microorganisms (72, 73), and changes in the TLR expression induced by flavonoids could reflect changes in the intestinal microbiota and/or in its relation with intestinal immune cells (69, 74). Accordingly, several studies have shown that cocoa (58, 75, 76), cocoa flavonoids (58, 77), or cocoa fiber (78) induce changes in gut microbiota composition. Moreover, a lower proportion of IgA-coated bacteria have been observed after cocoa intake (79).

In summary, it could not be discarded that the influence of cocoa on GALT was partially mediated by its effect on the intestinal microbiota, which can lead to differential TLR activation and, therefore, may also influence the lowering IgA effect of cocoa.

Recently, an analysis of an untargeted ¹H NMR spectroscopy-based metabolomic approach in 24-h urine samples have been carried out in order to correlate urine cocoa metabolites with cocoa effects on immunity and the gut microbiota (80). The results of this analysis demonstrate that cocoa intake, besides affecting microbiota composition, also alters the host and bacterial metabolism concerning energy and amino acid pathways leading to a particular metabolic signature that correlates with the S-IgA lowering effect of cocoa. Accordingly, a different pattern of intestinal and serum short-chain fatty acids, with increasing amounts of butyric acid, has been reported (78).

Finally, and in order to have a broader view of the molecules involved in the intestinal immune response modulated by cocoa, the changes in colonic gene expression by a microarray analysis after a cocoa nutritional intervention has been carried out (81). This study shows that a cocoa diet downregulated an extensive number of genes, many of them involved in the biological processes related to the immune system and inflammation. Specifically, the most downregulated gene after cocoa intake was tachykinin 4 (81), described as the promoter of B lineage cells (82), which could explain the attenuating effect of cocoa on antibody synthesis, despite the fact that the proportion of B cells did not decrease but, on the contrary, increased in some lymphoid tissues. Moreover, other genes involved in pathways related to the mast cell-mediated immunity, its activation, and its degranulation were downregulated (81), pointing out the possible role of cocoa in inducing tolerance in allergic processes as observed in some studies next reported.

Cocoa Intake Also Influences Another Mucosal Lymphoid Tissue

The mucosal immune system is interconnected (59). Due to cocoa's influence on the intestinal immune system, it became of

interest to know whether this effect was also extended to other mucosal compartments, such as the salivary glands. The IgA and IgM content in the salivary glands (submaxillary and parotid salivary glands) was quantified after a 10% cocoa intake in rats for 3 weeks. The cocoa diet induced a decrease in the IgA and IgM content in both glands (56). This attenuating effect was associated with a drastic reduction in the IgA gene expression together with a lower expression of some molecules involved in the maturation and differentiation of B cells, such as IL-6 and TGF- β 1 (56), as previously observed in the small intestinal samples (19, 20). However, in agreement with what was detected at intestinal level, no changes were detected in pIgR gene expression in the salivary glands. Therefore, in conclusion, this study shows that cocoa intake not only has an influence on the gut intestinal compartment and the systemic immunity but also on other mucosal sites in rats.

EFFECT OF COCOA DIET ON ANTIBODY-MEDIATED DISEASES

Due to the attenuating properties of cocoa on immunoglobulin levels after cocoa intake in rats, it was of interest to test its impact on diseases in which antibodies play a harmful effect. Therefore, this nutritional intervention was tested on animal models of arthritis and allergy.

Effect of Cocoa Diet on Experimental Arthritis

Rheumatoid arthritis is a symmetric, polyarticular, systemic, and autoimmune inflammatory disease in which multiple factors, including genetic, immune, and environmental ones are involved (83). Diet components such as n-3 fatty acids, vitamins D and K, and antioxidants are protective compounds against rheumatoid arthritis (84). In this context, diets containing 5 or 10% cocoa were tested on adjuvant arthritis, a model of rheumatoid arthritis widely used for the screening of anti-inflammatory drugs (85). In this animal model, cocoa diet decreased the synthesis of antibodies against the pathology inducer (Table 3) and was also able to decrease the proportion of Th cells in both blood and regional lymphoid tissues (86). This latter effect is important because, as anti-CD4 therapy has been shown to prevent or ameliorate adjuvant arthritis (87, 88), the cocoa-induced decrease in Th cells could be beneficial to the arthritic process. Moreover, a 10% cocoa diet avoided the Th/Tc imbalance and the reduction of the proportion of NKT cells produced by the disease (86). However, the effect of cocoa on hind-paw inflammation was very poor (86), which did not agree with the protective effect of other flavonoids in a similar inflammatory model when given by oral (quercetin) or by intraperitoneal routes (quercetin, rutin, hesperidin, and morin) (89–91). Nevertheless, a cocoa extract inhibited mice ear edema (92) and acute paw edema in rat (93, 94). Moreover, cocoa flavonoids such as epicatechin, catechin, and procyanidin B2, among others, are able to attenuate the synthesis of inflammatory mediators, such as tumor necrosis factor (TNF)- α , monocyte chemoattractant protein-1, IL-6, and IL-8 (95–100).

The influence of a 10% cocoa diet was also analyzed in collagen-induced arthritis, another model of arthritis. This

TABLE 3 | Summary of the effects of cocoa diet in specific antibodies in rat models of arthritis and allergy.

Model	Strain	Cocoa dose	Results	Reference
Adjuvant arthritis	Wistar	5% in the food	↓Specific antibodies	(86)
		10% in the food	↓Specific antibodies	
Collagen-induced arthritis	Louvain	5–10% in the food	=Specific IgG1 ↓Specific IgG2a, IgG2b, IgG2c	(32)
Allergy induced by intraperitoneal route	Brown Norway	10% in the food	↓Specific IgG1, IgG2a =Specific IgG2b ↓Specific IgE	(22)
Food allergy induced by intraperitoneal and oral routes	Brown Norway	10% in the food	↓ specific IgG1, IgG2a =Specific IgG2b ↓Specific IgE	(101)
Oral sensitization	Lewis	10% in the food	↓Specific IgG1, IgG2b ↓Specific IgM	(31)

Ig, immunoglobulin.

Arrows indicate increases or decreases, equals sign means no changes.

inflammatory model requires T- and B-cell responses to autologous collagen (102). B cells from animals with collagen-induced arthritis produce a strong specific immune response against triple helical epitopes of collagen type II (103). Anti-collagen autoantibodies bind to the joint cartilage, activate the complement cascade, and mediate the inflammatory attack on the joints, thus contributing to the disease development (104). Susceptible Louvain rats were fed with a 10% cocoa diet for 2 weeks before arthritis induction and during the latency period (2 weeks after induction), and thereafter with a 5% cocoa diet until the end of the study (an additional 2 weeks). In this case, the cocoa-enriched diet was able to reduce the synthesis of specific antibodies against type II collagen, differentially according to their isotype (Table 3), decrease the Th lymphocyte proportion in regional lymph nodes, and reduce the release of inflammatory mediators from peritoneal macrophages. However, these immunomodulatory effects were not enough to reduce the hind-paw swelling in arthritic animals (32). It must be taken into account that the decrease in anti-collagen antibody concentration in that rat strain was only observed at the end of the study, and it was in a lesser extent and more slowly than that expected and observed in healthy rats as shown before. In a similar context, other authors reported the beneficial effect of isolated flavonoids in improving the paw swelling in animals in long-term studies (105–107). Otherwise a nutritional intervention with the flavonoid genistein had no success (108).

Effect of Cocoa Diet on Hypersensitivity Animal Models

Cocoa on Allergy Models

The effect of the consumption of a 10% cocoa diet over 4 weeks was studied in a model of allergy induced by an intraperitoneal (i.p.) injection of ovalbumin (OVA) and toxin of *Bordetella pertussis* in alum in young Brown Norway rats (22). The cocoa

diet reduced the levels of anti-OVA IgG1 and IgG2a antibodies (Table 3), i.e., immunoglobulins related to Th2-immune response in rats, as previously mentioned. In addition, cocoa consumption decreased the serum concentrations of total and specific IgE (Table 3), which is the main immunoglobulin involved in allergic reactions. These results agree with studies performed in animal models of allergy treated with polyphenols, such as baicalein (109), quercetin (110), silibinin (111), sesamin (112), or an extract of *Kalanchoe pinnata* (Crassulaceae) containing several flavonoids such as quercetin (113).

To analyze the mechanisms involved in such action, cytokine secretion was quantified in mesenteric lymph nodes. Contrary to what was expected, cocoa diet increased the release of IL-4, a Th2 cytokine, and decreased that of IL-10, a cytokine related to immune-regulatory responses (22). In addition, cocoa intake induced a lower secretion of TNF- α , which has been described as a contributor to the development of Th2-mediated allergic inflammation by means of promoting the homing of Th2 cells to the site of allergic inflammation. These effects of IL-10 and TNF- α agree with those reported by other flavonoids in allergic conditions (113–115).

The influence of cocoa on the GALT makes it particularly interesting to test the effect of this nutritional intervention on a food allergy process. A model of food allergy using OVA as allergen was carried out in Brown Norway rats, combining an i.p. and oral administration of the allergen. The quantification of serum anti-OVA IgG1, IgG2a, and IgE antibodies revealed that the synthesis of these antibodies was completely prevented by the cocoa diet (101) (Table 3). In this study, a product that was richer in cocoa flavonoids was included, but it was not able to totally reproduce the same effects as the conventional cocoa-enriched diet. Therefore, it seems that cocoa flavonoids are only partially responsible for cocoa's anti-allergy properties.

In addition, after anaphylactic shock, the increase of the serum mast cell protease II was partially prevented in the allergic group fed a cocoa diet (101). Nevertheless, other markers of anaphylaxis were not modified by the cocoa intake (body temperature and motor activity), suggesting that its modifications were not enough to prevent the food allergy reaction induced (101).

In order to shed light on cocoa's anti-allergy properties, the expression of some small intestinal genes were quantified (101). The food allergy induction increased the IgA gene expression, an effect that was prevented by a cocoa diet. Moreover, the allergic animals fed a cocoa diet also had lower mRNA levels of high-affinity IgE receptors (Fc ϵ RI), mast cell protease-II, and TGF- β 1 than reference animals, molecules which could be involved in the protective effect of cocoa on food allergy. Accordingly, the inhibitory effects of flavonoids on the Fc ϵ RI surface molecule or gene expression *in vitro* were described (116, 117), and the genetic analysis of colon from rats fed cocoa assessed by microarray analysis showed the downregulation of genes involved in pathways related to mast cell activation and degranulation (81). The cytokine production of food-allergic animals was also determined in mesenteric lymph nodes and spleen (101). In these tissues, the food allergy induction increased the secretion of Th2-cytokines, such as IL-4, IL-5, and IL-13. However, the cocoa diet prevented an increase in

IL-5 and IL-13 in lymph node cells and that of IL-4 and IL-13 in splenocytes.

In conclusion, in models of Th-2 immune response stimulation, the intake of cocoa prevents the secretion of typical Th2-cytokines, the synthesis of IgE involved in mast cell degranulation, and also downregulates the IgE receptors in mast cells and intestinal mast cell activation, which are the cells responsible for the most allergy symptoms. However, such effects were not able to totally prevent anaphylactic shock.

Cocoa on an Oral Sensitization Model

Although cocoa intake prevented the allergic sensitization in a model of food allergy induced by i.p. and oral allergen administration (101), it remained to find out what happened when the sensitization with the allergen was produced using only the oral route. Therefore, a 10% cocoa-enriched diet was given to 3-week-old Lewis rats submitted to an oral sensitization model induced by the oral administration of OVA together with the cholera toxin (CT) as adjuvant (118). The oral administration of OVA/CT, three times per week and for 3 weeks, was able to break down oral tolerance and induce the synthesis of specific antibodies after 4 weeks from the beginning of the sensitization protocol. Although this model did not induce detectable specific IgE synthesis, Th2-immune response related antibodies were produced (118) (Table 3). Feeding 10% cocoa from the beginning of the study and throughout 4 weeks attenuated the development of specific antibodies in sensitized rats fed the cocoa diet (31). In particular, the 10% cocoa diet prevented the production of anti-OVA IgG1, IgG2b, and IgM in agreement with the effect of cocoa in a food allergy model in Brown Norway rats (101).

In addition, although the IgA concentrations were not increased in this rat oral sensitization model, in contrast to other models using the same adjuvant (63, 119), the cocoa diet decreased the total IgA in both serum and intestinal compartments. As stated in previous sections, a cocoa diet influences the proliferation, differentiation, and gut homing of IgA⁺ B cells (19, 31, 33), thus inducing a lower presence of these cells in the intestinal lamina propria (33) and, consequently, reducing the intestinal IgA development in line with what was reported in many studies (20, 79, 101). Additionally, the changes produced by the cocoa diet in both inductive and effector lymphoid tissues (see Cocoa Intake and Lymphocyte Composition in Small Intestine and Colon) might be responsible for the prevention of the oral sensitization. It is worth noting that the cocoa diet increased the proportion of TCR $\gamma\delta$ ⁺ and NK cells in three intestinal compartments (mesenteric lymph nodes, PP, and IEL), suggesting their role in the tolerogenic process. In line with this, unripe apple polyphenols induced an increase in the proportion of TCR $\gamma\delta$ ⁺ IEL in association with the inhibition of the development of an oral sensitization model (25), and it was also reported that the reduction of TCR $\gamma\delta$ ⁺ cells by the anti-TCR $\gamma\beta$ antibody favors an oral sensitization in mice (120). Furthermore, NK cells could have regulatory functions contributing to the avoidance of sensitization in line with the reported prevention of allergic disease (121, 122).

Other changes induced by a cocoa diet could contribute to its tolerogenic effect (31, 33). Such changes include a reduced

proportion of Th cells in mesenteric lymph nodes, PP in IEL, an increase in the percentage of CD103⁺ cells, a reduction of CD62L⁺ cells, and an increase in the percentage of CD25⁺ cells in PP. Cocoa intake also modulated the gene expression of several molecules both in mesenteric lymph nodes and in the small intestine (31, 33). In particular, cocoa consumption was associated with an increase in the gene expression of CD11c—a dendritic cell marker (123)—in mesenteric lymph nodes, whereas the mRNA levels of CD11c and CD11b were reduced in small intestinal samples; cocoa also upregulated the expression of OX40L in mesenteric lymph nodes (31)—mainly expressed on antigen-presenting cells (124). In this sense, the interaction of OX40–OX40L regulates cytokine production from T cells, antigen-presenting cells, NK cells, NKT cells, and cytokine receptor signaling (125). Additionally, cocoa decreased the gene expression of IL-1 β —a potent pro-inflammatory cytokine (126)—in mesenteric lymph nodes, although no modifications were seen in the production of Th1 (IFN- γ and TNF- α), Th2 (IL-4), or Treg (IL-10) cytokines.

Overall, a cocoa intake, by means of its influence on the intestinal immune system, is able to avoid the sensitization to oral allergens, thus contributing to the downregulation of this hypersensitivity reaction.

Cocoa on an Atopic Dermatitis Model

Recently the role of a cocoa extract on atopic dermatitis has been published (127). The cocoa extract decreased the IgE levels induced by a *Dermatophagoides farinae* extract together with a reduction of atopic dermatitis symptoms. Particularly, the cocoa decreased the severity of the skin lesions, the loss of skin hydration and suppressed the infiltration of eosinophils and mast cells into the skin lesions. Moreover, an extract containing 0.25% cocoa downregulated IL-4 mRNA levels on the skin tissues, whereas an extract containing 1% cocoa decreased IL-5 gene expression at this level.

CONCLUSION

In this review, we summarize the effect of a cocoa diet on the immune system of rats, particularly in the antibody response, both in systemic and mucosal (intestinal and extraintestinal) compartments. The analyses of cells involved in such responses, as well as molecules, such as cytokines and receptors, demonstrate that the effects of a cocoa diet are exerted at multiple sites: in the antigenic presentation, in the cytokines produced by effector Th cells, and in the intestinal homing of activated cells. Eventually, these actions will reduce the synthesis of most antibody isotypes, in particular Th2-associated antibodies as IgE. The relative decrease of Th lymphocytes associated with an increase in TCR $\gamma\delta$ ⁺ cells and NK cells detected in most lymphoid tissues studied suggest the involvement of these cells in the regulatory role of cocoa. The immunomodulatory potential of cocoa can be very beneficial in those diseases that involve hypersensitivity, such as allergy and autoimmune diseases. Nevertheless, although no signs of immunodeficiency were observed in the described studies, it must be considered that the attenuation of antibodies can be harmful when antibodies are needed to counteract a

pathogenic antigen, such as infections, and to induce antibody-dependent cytotoxicity, phagocytosis, and complement activation. Although further research must characterize the particular cocoa components responsible for such effects, and nutritional studies in humans need to be carried out, cocoa has potential as a nutraceutical agent in some hypersensitivity status.

AUTHOR CONTRIBUTIONS

MC-B, MM-C, MA-G, and AF were responsible for the manuscript preparation. MM-C and MA-G contributed to the

manuscript draft. MC-B mainly wrote the manuscript. FP-C and MC contributed to its critical revision.

FUNDING

The present study was supported by a grant from the Spanish Ministry of Economy and Competitiveness (AGL2011-24279) and a grant from the *Agencia Estatal de Investigación* (AEI, Spain) and European funds (Fondo Europeo de Desarrollo Regional, FEDER) (AGL2016-76972-R). MC-B is a recipient of a doctoral fellowship from the University of Barcelona (APIF2014).

REFERENCES

- Chaplin DD. Overview of the immune response. *J Allergy Clin Immunol* (2010) 125:S3–23. doi:10.1016/j.jaci.2009.12.980
- El Shikh MEM, Pitzalis C. Follicular dendritic cells in health and disease. *Front Immunol* (2012) 3:292. doi:10.3389/fimmu.2012.00292
- Heesters BA, Chatterjee P, Kim YA, Gonzalez SF, Kuligowski MP, Kirchhausen T, et al. Endocytosis and recycling of immune complexes by follicular dendritic cells enhances B cell antigen binding and activation. *Immunity* (2013) 38:1164–75. doi:10.1016/j.immuni.2013.02.023
- Kranich J, Krautler NJ. How follicular dendritic cells shape the B-cell antigenome. *Front Immunol* (2016) 7:225. doi:10.3389/fimmu.2016.00225
- Lippi D. Chocolate in history: food, medicine, medi-food. *Nutrients* (2013) 5:1573–84. doi:10.3390/nu5051573
- De Araujo QR, Gattward JN, Almoosawi S, Silva M, Dantas PA, De Araujo Junior QR. Cocoa and human health: from head to foot – a review. *Crit Rev Food Sci Nutr* (2016) 56:1–12. doi:10.1080/10408398.2012.657921
- Grassi D, Desideri G, Mai F, Martella L, De Feo M, Soddu D, et al. Cocoa, glucose tolerance, and insulin signaling: cardiometabolic protection. *J Agric Food Chem* (2015) 63:9919–26. doi:10.1021/acs.jafc.5b00913
- Ellam S, Williamson G. Cocoa and human health. *Annu Rev Nutr* (2013) 33:105–28. doi:10.1146/annurev-nutr-071811-150642
- Kampa M, Theodoropoulou K, Mavromati F, Pelekanou V, Notas G, Lagoudaki ED, et al. Novel oligomeric proanthocyanidin derivatives interact with membrane androgen sites and induce regression of hormone-independent prostate cancer. *J Pharmacol Exp Ther* (2011) 337:24–32. doi:10.1124/jpet.110.177246
- Martin MA, Goya L, Ramos S. Potential for preventive effects of cocoa and cocoa polyphenols in cancer. *Food Chem Toxicol* (2013) 56:336–51. doi:10.1016/j.fct.2013.02.020
- Rodríguez-Ramiro I, Ramos S, López-Oliva E, Agis-Torres A, Gómez-Juaristi M, Mateos R, et al. Cocoa-rich diet prevents azoxymethane-induced colonic preneoplastic lesions in rats by restraining oxidative stress and cell proliferation and inducing apoptosis. *Mol Nutr Food Res* (2011) 55:1895–9. doi:10.1002/mnfr.201100363
- Goya L, Martín MÁ, Sarriá B, Ramos S, Mateos R, Bravo L. Effect of cocoa and its flavonoids on biomarkers of inflammation: studies of cell culture, animals and humans. *Nutrients* (2016) 8:1–22. doi:10.3390/nu8040212
- Pérez-Cano FJ, Massot-Cladera M, Franch A, Castellote C, Castell M. The effects of cocoa on the immune system. *Front Pharmacol* (2013) 4:71. doi:10.3389/fphar.2013.00071
- Ramiro-Puig E, Castell M. Cocoa: antioxidant and immunomodulator. *Br J Nutr* (2009) 101:931–40. doi:10.1017/S0007114508169896
- Ellinger S, Stehle P. Impact of cocoa consumption on inflammation processes – critical review of randomized controlled trials. *Nutrients* (2016) 8:1–26. doi:10.3390/nu8060321
- Castell M, Saldaña-Ruiz S, Rodríguez-Lagunas MJ, Franch À, Pérez-Cano FJ. Second international congress on chocolate and cocoa in medicine held in Barcelona, Spain, 25–26th September 2015. *Nutrients* (2015) 7:9785–803. doi:10.3390/nu7125502
- Massot-Cladera M, Pérez-Cano F, Llorach R, Urpi-Sarda M. 'Cocoa and chocolate: science and gastronomy'. The second annual workshop of the Research Institute on Nutrition and Food Security (INSA): 9 November 2016. *Nutrients* (2017) 9:156. doi:10.3390/nu9020156
- Ramiro-Puig E, Pérez-Cano FJ, Ramírez-Santana C, Castellote C, Izquierdo-Pulido M, Permanyer J, et al. Spleen lymphocyte function modulated by a cocoa-enriched diet. *Clin Exp Immunol* (2007) 149:535–42. doi:10.1111/j.1365-2249.2007.03430.x
- Pérez-Berezo T, Franch A, Castellote C, Castell M, Pérez-Cano FJ. Mechanisms involved in down-regulation of intestinal IgA in rats by high cocoa intake. *J Nutr Biochem* (2012) 23:838–44. doi:10.1016/j.jnutbio.2011.04.008
- Pérez-Berezo T, Franch A, Ramos-Romero S, Castellote C, Pérez-Cano FJ, Castell M. Cocoa-enriched diets modulate intestinal and systemic humoral immune response in young adult rats. *Mol Nutr Food Res* (2011) 55(Suppl 1):S56–66. doi:10.1002/mnfr.201000588
- Pérez-Berezo T, Ramiro-Puig E, Pérez-Cano FJ, Castellote C, Permanyer J, Franch A, et al. Influence of a cocoa-enriched diet on specific immune response in ovalbumin-sensitized rats. *Mol Nutr Food Res* (2009) 53:389–97. doi:10.1002/mnfr.200700396
- Abril-Gil M, Massot-Cladera M, Pérez-Cano FJ, Castellote C, Franch A, Castell M. A diet enriched with cocoa prevents IgE synthesis in a rat allergy model. *Pharmacol Res* (2012) 65:603–8. doi:10.1016/j.phrs.2012.02.001
- Kogiso M, Sakai T, Mitsuya K, Komatsu T, Yamamoto S. Genistein suppresses antigen-specific immune responses through competition with 17beta-estradiol for estrogen receptors in ovalbumin-immunized BALB/c mice. *Nutrition* (2006) 22:802–9. doi:10.1016/j.nut.2006.04.003
- Yano S, Umeda D, Yamashita T, Ninomiya Y, Sumida M, Fujimura Y, et al. Dietary flavones suppresses IgE and Th2 cytokines in OVA-immunized BALB/c mice. *Eur J Nutr* (2007) 46:257–63. doi:10.1007/s00394-007-0658-7
- Akiyama H, Sato Y, Watanabe T, Nagaoka MH, Yoshioka Y, Shoji T, et al. Dietary unripe apple polyphenol inhibits the development of food allergies in murine models. *FEBS Lett* (2005) 579:4485–91. doi:10.1016/j.febslet.2005.07.019
- Ceredig R. The impact of cell re-entry into the primary lymphoid organs on lymphocyte repertoire and functionality. *Immunol Cell Biol* (2009) 87:13–5. doi:10.1038/icb.2008.91
- Boehm T, Bleul CC. The evolutionary history of lymphoid organs. *Nat Immunol* (2007) 8:131–5. doi:10.1038/nri1435
- Urpi-Sarda M, Ramiro-puig E, Khan N, Ramos-romero S, Llorach R, Castell M, et al. Distribution of epicatechin metabolites in lymphoid tissues and testes of young rats with a cocoa-enriched diet. *Br J Nutr* (2010) 103:1393–7. doi:10.1017/S0007114509993473
- Ramiro-Puig E, Urpi-Sardà M, Pérez-Cano FJ, Franch A, Castellote C, Andrés-Lacueva C, et al. Cocoa-enriched diet enhances antioxidant enzyme activity and modulates lymphocyte composition in thymus from young rats. *J Agric Food Chem* (2007) 55:6431–8. doi:10.1021/jf070487w
- Ramiro-Puig E, Pérez-Cano FJ, Ramos-Romero S, Pérez-Berezo T, Castellote C, Permanyer J, et al. Intestinal immune system of young rats influenced by cocoa-enriched diet. *J Nutr Biochem* (2008) 19:555–65. doi:10.1016/j.jnutbio.2007.07.002
- Camps-Bossacoma M, Abril-Gil M, Saldaña-Ruiz S, Franch À, Pérez-Cano FJ, Castell M. Cocoa diet prevents antibody synthesis and modifies lymph node composition and functionality in a rat oral sensitization model. *Nutrients* (2016) 8:1–17. doi:10.3390/nu8040242
- Ramos-Romero S, Pérez-Cano FJ, Pérez-Berezo T, Castellote C, Franch A, Castell M. Effect of a cocoa flavonoid-enriched diet on experimental autoimmune arthritis. *Br J Nutr* (2012) 107:523–32. doi:10.1017/S000711451100328X

33. Camps-Bossacoma M, Pérez-Cano FJ, Franch À, Untersmayr E, Castell M. Effect of a cocoa diet on the small intestine and gut-associated lymphoid tissue composition in a rat oral sensitization model. *J Nutr Biochem* (2017) 42:182–93. doi:10.1016/j.jnutbio.2017.01.005
34. Bol-Schoenmakers M, Marcondes Rezende M, Bleumink R, Boon L, Man S, Hassing I, et al. Regulation by intestinal $\gamma\delta$ T cells during establishment of food allergic sensitization in mice. *Allergy* (2011) 66:331–40. doi:10.1111/j.1398-9995.2010.02479.x
35. Agace WW, Higgins JM, Sadasivan B, Brenner MB, Parker CM. T-lymphocyte-epithelial-cell interactions: integrin $\alpha E(CD103)\beta 7$, LEEP-CAM and chemokines. *Curr Opin Cell Biol* (2000) 12:563–8. doi:10.1016/S0955-0674(00)00132-0
36. Raffler NA, Rivera-Nieves J, Ley K. L-selectin in inflammation, infection and immunity. *Drug Discov Today Ther Strateg* (2005) 2:213–20. doi:10.1016/j.ddstr.2005.08.012
37. Appeldoorn MM, Vincken J-P, Gruppen H, Hollman PCH. Procyanidin dimers A1, A2, and B2 are absorbed without conjugation or methylation from the small intestine of rats. *J Nutr* (2009) 139:1469–73. doi:10.3945/jn.109.106765
38. Cardona F, Andrés-Lacueva C, Tulipani S, Tinahones FJ, Queipo-Ortuño MI. Benefits of polyphenols on gut microbiota and implications in human health. *J Nutr Biochem* (2013) 24:1415–22. doi:10.1016/j.jnutbio.2013.05.001
39. Huang Y, Getahun A, Heiser RA, Detanico TO, Aviszus K, Kirchenbaum GA, et al. $\gamma\delta$ T cells shape preimmune peripheral B cell populations. *J Immunol* (2016) 196:217–31. doi:10.4049/jimmunol.1501064
40. Deniz G, Erten G, Küküçsezer UC, Kocacik D, Karagiannidis C, Aktas E, et al. Regulatory NK cells suppress antigen-specific T cell responses. *J Immunol* (2008) 180:850–7. doi:10.4049/jimmunol.180.2.850
41. Nandakumar S, Miller CW, Kumaraguru U. T regulatory cells: an overview and intervention techniques to modulate allergy outcome. *Clin Mol Allergy* (2009) 7:1–8. doi:10.1186/1476-7961-7-5
42. Mao T, Van De Water J, Keen CL, Schmitz HH, Gershwin ME. Cocoa procyanidins and human cytokine transcription and secretion. *J Nutr* (2000) 130(8S Suppl):2093S–9S.
43. Ramiro E, Franch À, Castellote C, Andrés-Lacueva C, Izquierdo-Pulido M, Castell M. Effect of *Theobroma cacao* flavonoids on immune activation of a lymphoid cell line. *Br J Nutr* (2007) 93:859–66. doi:10.1079/BJN20051443
44. Boyman O, Sprent J. The role of interleukin-2 during homeostasis and activation of the immune system. *Nat Rev Immunol* (2012) 12:180–90. doi:10.1038/nri3156
45. Liao W, Jian-Xin L, Warren JL. Interleukin-2 at the crossroads of effector responses, tolerance, and immunotherapy. *Immunity* (2013) 38:13–25. doi:10.1038/jid.2014.371
46. Berin MC, Mayer L. Immunophysiology of experimental food allergy. *Mucosal Immunol* (2009) 2:24–32. doi:10.1038/mi.2008.72
47. Sutherland DB, Suzuki K, Fagarasan S. Fostering of advanced mutualism with gut microbiota by immunoglobulin A. *Immunol Rev* (2016) 270:20–31. doi:10.1111/imr.12384
48. Wu Q, Tang Y, Hu X, Wang Q, Lei W, Zhou L, et al. Regulation of Th1/Th2 balance through OX40/OX40L signalling by glycyrrhizic acid in a murine model of asthma. *Respirology* (2015) 21:102–11. doi:10.1111/resp.12655
49. Zhu J, Yamane H, Paul W. Differentiation of effector CD4 T cell populations. *Annu Rev Immunol* (2010) 28:445–89. doi:10.1146/annurev-immunol-030409-101212.Differentiation
50. Teixeira LK, Fonseca BP, Barboza BA, Viola JP. The role of interferon-gamma on immune and allergic responses. *Mem Inst Oswaldo Cruz* (2005) 100(Suppl):137–44. doi:10.1590/S0074-02762005000900024
51. Wynn TA. Type 2 cytokines: mechanisms and therapeutic strategies. *Nat Rev Immunol* (2015) 15:271–82. doi:10.1038/nri3831
52. Jenny M, Santer E, Klein A, Ledochowski M, Schennach H, Ueberall F, et al. Cacao extracts suppress tryptophan degradation of mitogen-stimulated peripheral blood mononuclear cells. *J Ethnopharmacol* (2009) 122:261–7. doi:10.1016/j.jep.2009.01.011
53. Capaldo CT, Nusrat A. Cytokine regulation of tight junctions. *Biochim Biophys Acta* (2010) 1788:864–71. doi:10.1016/j.bbamem.2008.08.027. Cytokine
54. Steinke JW, Borish L. Th2 cytokines and asthma. Interleukin-4: its role in the pathogenesis of asthma, and targeting it for asthma treatment with interleukin-4 receptor antagonists. *Respir Res* (2001) 2:66–70. doi:10.1186/rr40
55. Saraiva M, O'Garra A. The regulation of IL-10 production by immune cells. *Nat Rev Immunol* (2010) 10:170–81. doi:10.1038/nri2711
56. Massot-Cladera M, Franch À, Pérez-Cano FJ, Castell M. Cocoa and cocoa fibre differentially modulate IgA and IgM production at mucosal sites. *Br J Nutr* (2016) 115:1539–46. doi:10.1017/S000711451600074X
57. Brandtzaeg P, Nilssen D. Mucosal aspects of primary B-cell deficiency and gastrointestinal infections. *Curr Opin Gastroenterol* (1995) 11:532–40. doi:10.1097/00001574-199511000-00012
58. Massot-Cladera M, Abril-Gil M, Torres S, Franch A, Castell M, Pérez-Cano FJ. Impact of cocoa polyphenol extracts on the immune system and microbiota in two strains of young rats. *Br J Nutr* (2014) 112:1944–54. doi:10.1017/S0007114514003080
59. McGhee JR, Fujihashi K. Inside the mucosal immune system. *PLoS Biol* (2012) 10:e1001397. doi:10.1371/journal.pbio.1001397
60. Corthay A. How do regulatory T cells work? *Scand J Immunol* (2009) 70:326–36. doi:10.1111/j.1365-3083.2009.02308.x
61. Elgueta R, Benson MJ, de Vries Victor VC, Wasiuk A, Guo Y, Noelle RJ. Molecular mechanism and function of CD40/CD40L engagement in the immune system. *Immunol Rev* (2009) 229:152–72. doi:10.1111/j.1600-065X.2009.00782.x.Molecular
62. Kunisawa J, Kiyono H. A marvel of mucosal T cells and secretory antibodies for the creation of first lines of defense. *Cell Mol Life Sci* (2005) 62:1308–21. doi:10.1007/s00018-005-5035-1
63. Macpherson AJ, McCoy KD, Johansen F-E, Brandtzaeg P. The immune geography of IgA induction and function. *Mucosal Immunol* (2008) 1:11–22. doi:10.1038/mi.2007.6
64. Fagarasan S, Kawamoto S, Kanagawa O, Suzuki K. Adaptive immune regulation in the gut: T cell-dependent and T cell-independent IgA synthesis. *Annu Rev Immunol* (2010) 28:243–73. doi:10.1146/annurev-immunol-030409-101314
65. Cerutti A, Rescigno M. The biology of intestinal immunoglobulin A responses. *Immunity* (2008) 28:740–50. doi:10.1016/j.immuni.2008.05.001.The
66. Gutzeit C, Magri G, Cerutti A. Intestinal IgA production and its role in host-microbe interaction. *Immunol Rev* (2014) 260:76–85. doi:10.1111/imr.12189
67. Ross AC, Chen Q, Ma Y. Augmentation of antibody responses by retinoic acid and costimulatory molecules. *Clin Lymphoma* (2010) 9:19–22. doi:10.3816/CLM.2009.n.003.Novel
68. Stadtmueller BM, Huey-Tubman KE, López CJ, Yang Z, Hubbell WL, Bjorkman PJ. The structure and dynamics of secretory component and its interactions with polymeric immunoglobulins. *Elife* (2016) 5:1–23. doi:10.7554/eLife.10640
69. Pérez-Cano F, Massot-Cladera M, Rodríguez-Lagunas M, Castell M. Flavonoids affect host-microbiota crosstalk through TLR modulation. *Antioxidants (Basel)* (2014) 3:649–70. doi:10.3390/antiox3040649
70. Sung NY, Yang MS, Song DS, Kim JK, Park JH, Song BS, et al. Procyanidin dimer B2-mediated IRAK-M induction negatively regulates TLR4 signaling in macrophages. *Biochem Biophys Res Commun* (2013) 438:122–8. doi:10.1016/j.bbrc.2013.07.038
71. Shang L, Fukata M, Thirunarayanan N, Martin AP, Maussang D, Berin C, et al. TLR signaling in small intestinal epithelium promotes B cell recruitment and IgA production in lamina propria. *Gastroenterology* (2009) 135:529–38. doi:10.1053/j.gastro.2008.04.020.TLR
72. Abreu MT. Toll-like receptor signalling in the intestinal epithelium: how bacterial recognition shapes intestinal function. *Nat Rev Immunol* (2010) 10:131–44. doi:10.1038/nri2707
73. Cario E. Bacterial interactions with cells of the intestinal mucosa: toll-like receptors and Nod2. *Gut* (2005) 54:1182–93. doi:10.1136/gut.2004.062794
74. Shibolet O, Podolsky DK. TLRs in the gut. IV. Negative regulation of Toll-like receptors and intestinal homeostasis: addition by subtraction. *Am J Physiol Gastrointest Liver Physiol* (2007) 292:G1469–73. doi:10.1152/ajpgi.00531.2006
75. Camps-Bossacoma M, Pérez-Cano FJ, Franch À, Castell M. Gut microbiota in a rat oral sensitization model: effect of a cocoa-enriched diet. *Oxid Med Cell Longev* (2017) 2017:7417505. doi:10.1155/2017/7417505

76. Massot-Cladera M, Pérez-Berezo T, Franch A, Castell M, Pérez-Cano FJ. Cocoa modulatory effect on rat faecal microbiota and colonic crosstalk. *Arch Biochem Biophys* (2012) 527:105–12. doi:10.1016/j.abb.2012.05.015
77. Tzounis X, Rodriguez-Mateos A, Vulevic J, Gibson GR, Kwik-Urbe C, Spencer JPE. Prebiotic evaluation of cocoa-derived flavanols in healthy humans by using a randomized, controlled, double-blind, crossover intervention study. *Am J Clin Nutr* (2011) 93:62–72. doi:10.3945/ajcn.110.000075
78. Massot-Cladera M, Costabile A, Childs CE, Yaqoob P, Franch A, Castell M, et al. Prebiotic effects of cocoa fibre on rats. *J Funct Foods* (2015) 19:341–52. doi:10.1016/j.jff.2015.09.021
79. Massot-Cladera M, Franch A, Castellote C, Castell M, Pérez-Cano FJ. Cocoa flavonoid-enriched diet modulates systemic and intestinal immunoglobulin synthesis in adult Lewis rats. *Nutrients* (2013) 5:3272–86. doi:10.3390/nu5083272
80. Massot-Cladera M, Mayneris-Perxachs J, Costabile A, Swann JR, Franch A, Pérez-Cano FJ, et al. Association between urinary metabolic profile and the intestinal effects of cocoa in rats. *Br J Nutr* (2017) 117:623–34. doi:10.1017/S0007114517000496
81. Massot-Cladera M, Franch A, Castell M, Pérez-Cano FJ. Cocoa polyphenols and fiber modify colonic gene expression in rats. *Eur J Nutr* (2016). doi:10.1007/s00394-016-1230-0
82. Zhang Y, Lu L, Furlonger C, Wu GE, Paige CJ. Hemokinin is a hematopoietic-specific tachykinin that regulates B lymphopoiesis. *Nat Immunol* (2000) 1:392–7. doi:10.1038/80826
83. Smolen JS, Aletaha D, McInnes IB. Rheumatoid arthritis. *Lancet* (2016) 388:2023–38. doi:10.1016/S0140-6736(16)30173-8
84. Tobón GJ, Youinou P, Saraux A. The environment, geo-epidemiology, and autoimmune disease: rheumatoid arthritis. *J Autoimmun* (2010) 35:10–4. doi:10.1016/j.jaut.2009.12.009
85. Holmdahl R, Lorentzen JC, Lu S, Olofsson P, Wester L, Holmberg J, et al. Arthritis induced in rats with nonimmunogenic adjuvants as models for rheumatoid arthritis. *Immunol Rev* (2001) 184:184–202. doi:10.1034/j.1600-065x.2001.1840117.x
86. Ramos-Romero S, Pérez-Cano FJ, Castellote C, Castell M, Franch A. Effect of cocoa-enriched diets on lymphocytes involved in adjuvant arthritis in rats. *Br J Nutr* (2012) 107:378–87. doi:10.1017/S0007114511003035
87. Pelegri C, Morante MP, Castellote C, Franch A, Castell M. Treatment with an anti-CD4 monoclonal antibody strongly ameliorates established rat adjuvant arthritis. *Clin Exp Immunol* (1996) 103:273–8. doi:10.1046/j.1365-2249.1996.d01-624.x
88. Pelegri C, Paz Morante M, Castellote C, Castell M, Franch A. Administration of a nondepleting anti-CD4 monoclonal antibody (W3/25) prevents adjuvant arthritis, even upon rechallenge: parallel administration of a depleting anti-CD8 monoclonal antibody (OX8) does not modify the effect of W3/25. *Cell Immunol* (1995) 165:177–82. doi:10.1006/cimm.1995.1203
89. Guardia T, Rotelli AE, Juárez AO, Pelzer LE. Anti-inflammatory properties of plant flavonoids. Effects of rutin, quercetin and hesperidin on adjuvant arthritis in rat. *Farmacol* (2001) 56:683–7. doi:10.1016/S0014-827X(01)01111-9
90. Mamani-Matsuda M, Kauss T, Al-Kharrat A, Rambert J, Fawaz F, Thiolat D, et al. Therapeutic and preventive properties of quercetin in experimental arthritis correlate with decreased macrophage inflammatory mediators. *Biochem Pharmacol* (2006) 72:1304–10. doi:10.1016/j.bcp.2006.08.001
91. Rotelli AE, Guardia T, Juárez AO, De La Rocha NE, Pelzer LE. Comparative study of flavonoids in experimental models of inflammation. *Pharmacol Res* (2003) 48:601–6. doi:10.1016/S1043-6618(03)00225-1
92. Lee KW, Kundu JK, Kim SO, Chun KS, Lee HJ, Surh YJ. Cocoa polyphenols inhibit phorbol ester-induced superoxide anion formation in cultured HL-60 cells and expression of cyclooxygenase-2 and activation of NF- κ B and MAPKs in mouse skin in vivo. *J Nutr* (2006) 136(5):1150–5.
93. Castell M, Franch A, Castellote C. Effect of a diet rich in cocoa flavonoids on experimental acute inflammation. In: Keller RB, editor. *Flavonoids: Biosynthesis, Biological effects and Dietary Sources*. Hauppauge, NY: Nova Science Publishers, Inc. (2009). p. 213–29.
94. Ramos-Romero S, Ramiro-Puig E, Pérez-Cano FJ, Castellote C, Franch A, Castell M. Anti-inflammatory effects of cocoa in rat carrageenin-induced paw oedema. *Proc Nutr Soc* (2008) 67:E65. doi:10.1017/S0029665108006745
95. Al-Hanbali M, Ali D, Bustami M, Abdel-Malek S, Al-Hanbali R, Alhussainy T, et al. Epicatechin suppresses IL-6, IL-8 and enhances IL-10 production with NF- κ B nuclear translocation in whole blood stimulated system. *Neuro Endocrinol Lett* (2009) 30:131–8.
96. Andújar I, Recio MC, Giner RM, Cienfuegos-Jovellanos E, Laghi S, Muguerza B, et al. Inhibition of ulcerative colitis in mice after oral administration of a polyphenol-enriched cocoa extract is mediated by the inhibition of STAT1 and STAT3 phosphorylation in colon cells. *J Agric Food Chem* (2011) 59:6474–83. doi:10.1021/jf2008925
97. Bitzer ZT, Glisan SL, Dorenkott MR, Goodrich KM, Ye L, O'Keefe SF, et al. Cocoa procyanidins with different degrees of polymerization possess distinct activities in models of colonic inflammation. *J Nutr Biochem* (2015) 26:827–31. doi:10.1002/dev.21214.Developmental
98. Guruvayoorappan C, Kuttan G. (+)-Catechin inhibits tumour angiogenesis and regulates the production of nitric oxide and TNF-alpha in LPS-stimulated macrophages. *Innate Immun* (2008) 14:160–74. doi:10.1177/1753425908093295
99. Ramiro E, Franch A, Castellote C, Pérez-Cano F, Permanyer J, Izquierdo-Pulido M, et al. Flavonoids from *Theobroma cacao* down-regulate inflammatory mediators. *J Agric Food Chem* (2005) 53:8506–11. doi:10.1021/jf0511042
100. Rodríguez-Ramiro I, Ramos S, López-Oliva E, Agis-Torres A, Bravo L, Goya L, et al. Cocoa polyphenols prevent inflammation in the colon of azoxymethane-treated rats and in TNF- α -stimulated Caco-2 cells. *Br J Nutr* (2013) 110:206–15. doi:10.1017/S0007114512004862
101. Abril-Gil M, Pérez-Cano FJ, Franch A, Castell M. Effect of a cocoa-enriched diet on immune response and anaphylaxis in a food allergy model in Brown Norway rats. *J Nutr Biochem* (2016) 27:317–26. doi:10.1016/j.jnutbio.2015.09.022
102. Brand DD, Kang AH, Rosloniec EF. Immunopathogenesis of collagen arthritis. *Springer Semin Immunopathol* (2003) 25:3–18. doi:10.1007/s00281-003-0127-1
103. Wernhoff P, Unger C, Bajtner E, Burkhardt H, Holmdahl R. Identification of conformation-dependent epitopes and V gene selection in the B cell response to type II collagen in the DA rat. *Int Immunol* (2001) 13:909–19. doi:10.1093/intimm/13.7.909
104. Bajtner E, Nandakumar KS, Engström A, Holmdahl R. Chronic development of collagen-induced arthritis is associated with arthritogenic antibodies against specific epitopes on type II collagen. *Arthritis Res Ther* (2005) 7:R1148–57. doi:10.1186/ar1800
105. Imada K, Lin N, Liu C, Lu A, Chen W, Yano M, et al. Nobiletin, a *Citrus* polymethoxy flavonoid, suppresses gene expression and production of aggrecanases-1 and -2 in collagen-induced arthritic mice. *Biochem Biophys Res Commun* (2008) 373:181–5. doi:10.1016/j.bbrc.2008.05.171
106. Kawaguchi K, Maruyama H, Kometani T, Kumazawa Y. Suppression of collagen-induced arthritis by oral administration of the *Citrus* flavonoid hesperidin. *Planta Med* (2006) 72:477–9. doi:10.1055/s-2005-916254
107. Kometani T, Fukuda T, Kakuma T, Kawaguchi K, Tamura W, Kumazawa Y, et al. Effects of alpha-glucosylhesperidin, a bioactive food material, on collagen-induced arthritis in mice and rheumatoid arthritis in humans. *Immunopharmacol Immunotoxicol* (2008) 30:117–34. doi:10.1080/08923970701812688
108. Verdrehng M, Jonsson IM, Holmdahl R, Tarkowski A. Genistein as an anti-inflammatory agent. *Inflamm Res* (2003) 52:341–6. doi:10.1007/s00011-003-1182-8
109. Bae M-J, Shin HS, See H-J, Jung SY, Kwon D-A, Shon D-H. Baicalein induces CD4(+)Foxp3(+) T cells and enhances intestinal barrier function in a mouse model of food allergy. *Sci Rep* (2016) 6:1–11. doi:10.1038/srep32225
110. Mlcek J, Jurikova T, Skrovankova S, Sochor J. Quercetin and its anti-allergic immune response. *Molecules* (2016) 21:1–15. doi:10.3390/molecules21050623
111. Shishebor F, Behroo L, Broujerdnia MG, Namjooyan F, Latifi SM. Quercetin effectively quells peanut-induced anaphylactic reactions in the peanut sensitized rats. *Iran J Allergy Asthma Immunol* (2010) 9:27–34.
112. Lin C-H, Shen M-L, Zhou N, Lee C-C, Kao S-T, Wu DC. Protective effects of the polyphenol sesamin on allergen-induced T(H)2 responses and airway inflammation in mice. *PLoS One* (2014) 9:e96091. doi:10.1371/journal.pone.0096091
113. Cruz EA, Da-Silva SAG, Muzitano MF, Silva PMR, Costa SS, Rossi-Bergmann B. Immunomodulatory pretreatment with *Kalanchoe pinnata*

- extract and its quercitrin flavonoid effectively protects mice against fatal anaphylactic shock. *Int Immunopharmacol* (2008) 8:1616–21. doi:10.1016/j.intimp.2008.07.006
114. Iwasaki M, Saito K, Takemura M, Sekikawa K, Fujii H, Yamada Y, et al. TNF- α contributes to the development of allergic rhinitis in mice. *J Allergy Clin Immunol* (2003) 112:134–40. doi:10.1067/mai.2003.1554
 115. Jung WK, Choi I, Oh S, Park SG, Seo SK, Lee SW, et al. Anti-asthmatic effect of marine red alga (*Laurencia undulata*) polyphenolic extracts in a murine model of asthma. *Food Chem Toxicol* (2009) 47:293–7. doi:10.1016/j.fct.2008.11.012
 116. Nakano N, Nishiyama C, Tokura T, Nagasako-Akazome Y, Ohtake Y, Okumura K, et al. Procyanidin C1 from apple extracts inhibits Fc ϵ RI-mediated mast cell activation. *Int Arch Allergy Immunol* (2008) 147:213–21. doi:10.1159/000142044
 117. Yano S, Tachibana H, Yamada K. Flavones suppress the expression of the high-affinity IgE receptor FC epsilon RI in human basophilic KU812 cells. *J Agric Food Chem* (2005) 53:1812–7. doi:10.1021/jf047929d
 118. Camps-Bossacoma M, Abril-Gil M, Franch À, Pérez-Cano FJ, Castell M. Induction of an oral sensitization model in rats. *Clin Immunol Endocr Metab Drugs* (2014) 1:89–101. doi:10.2174/2212707002666150402225609
 119. Gagliardi MC, Sallusto F, Marinaro M, Vendetti S, Riccomi A, De Magistris MT. Effects of the adjuvant cholera toxin on dendritic cells: stimulatory and inhibitory signals that result in the amplification of immune responses. *Int J Med Microbiol* (2002) 291:571–5. doi:10.1078/1438-4221-00169
 120. Okunuki H, Teshima R, Sato Y, Nakamura R, Akiyama H, Maitani T, et al. The hyperresponsiveness of W/W^v mice to oral sensitization is associated with a decrease in TCR γ d-T cells. *Biol Pharm Bull* (2005) 28:584–90. doi:10.1248/bpb.28.584
 121. Deniz G, Van De Veen W, Akdis M. Natural killer cells in patients with allergic diseases. *J Allergy Clin Immunol* (2013) 132:527–35. doi:10.1016/j.jaci.2013.07.030
 122. Deniz G, Akdis M. NK cell subsets and their role in allergy. *Expert Opin Biol Ther* (2011) 11:833–41. doi:10.1517/14712598.2011.572549
 123. Merad M, Sathe P, Helft J, Miller J, Mortha A. The dendritic cell lineage: ontogeny and function of dendritic cells and their subsets in the steady state and the inflamed setting. *Annu Rev Immunol* (2013) 31:563–604. doi:10.1146/annurev-immunol-020711-074950.The
 124. Croft M, So T, Duan W, Soroosh P. The significance of OX40 and OX40L to T cell biology and immune disease. *Immunol Rev* (2009) 229:173–91. doi:10.1097/MPG.0b013e3181a15ae8.Screening
 125. Chinthrajah RS, Hernandez JD, Boyd SD, Galli SJ, Nadeau KC. Molecular and cellular mechanisms of food allergy and food tolerance. *J Allergy Clin Immunol* (2016) 137:984–97. doi:10.1016/j.jaci.2016.02.004
 126. Lopez-Castejon G, Brough D. Understanding the mechanism of IL-1 secretion. *Cytokine Growth Factor Rev* (2011) 22:189–95. doi:10.1016/j.cytogfr.2011.10.001
 127. Kang H, Lee CH, Kim J-ERE, Kwon JY, Son M-JJ, Kim J-ERE, et al. *Theobroma cacao* extract attenuates the development of *Dermatophagoides farinae*-induced atopic dermatitis-like symptoms in NC/Nga mice. *Food Chem* (2017) 216:19–26. doi:10.1016/j.foodchem.2016.07.141

Conflict of Interest Statement: The authors declare that this study was conducted in the absence of any commercial or financial relationships that could be construed as a potential conflict of interest.

Copyright © 2017 Camps-Bossacoma, Massot-Cladera, Abril-Gil, Franch, Pérez-Cano and Castell. This is an open-access article distributed under the terms of the Creative Commons Attribution License (CC BY). The use, distribution or reproduction in other forums is permitted, provided the original author(s) or licensor are credited and that the original publication in this journal is cited, in accordance with accepted academic practice. No use, distribution or reproduction is permitted which does not comply with these terms.