

CONQUAIRE


Enabling Git based research data quality control for institutional repositories!

Vidya Ayer, Christian Pietsch, Johanna Vompras,
Jochen Schirrwagen, Cord Wiljes, Vitali Peil, Philipp Cimiano.
CITEC, Bielefeld University, Germany

IG Repository Platforms for Research Data @RDA Plenary9

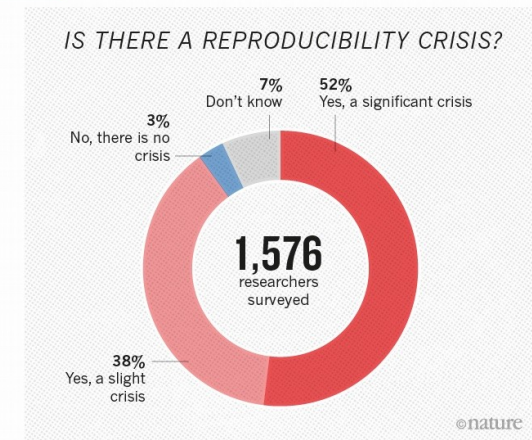
Friday, 07 April 2017, Barcelona, Spain.
CC BY-NC-SA 4.0 International License.

About

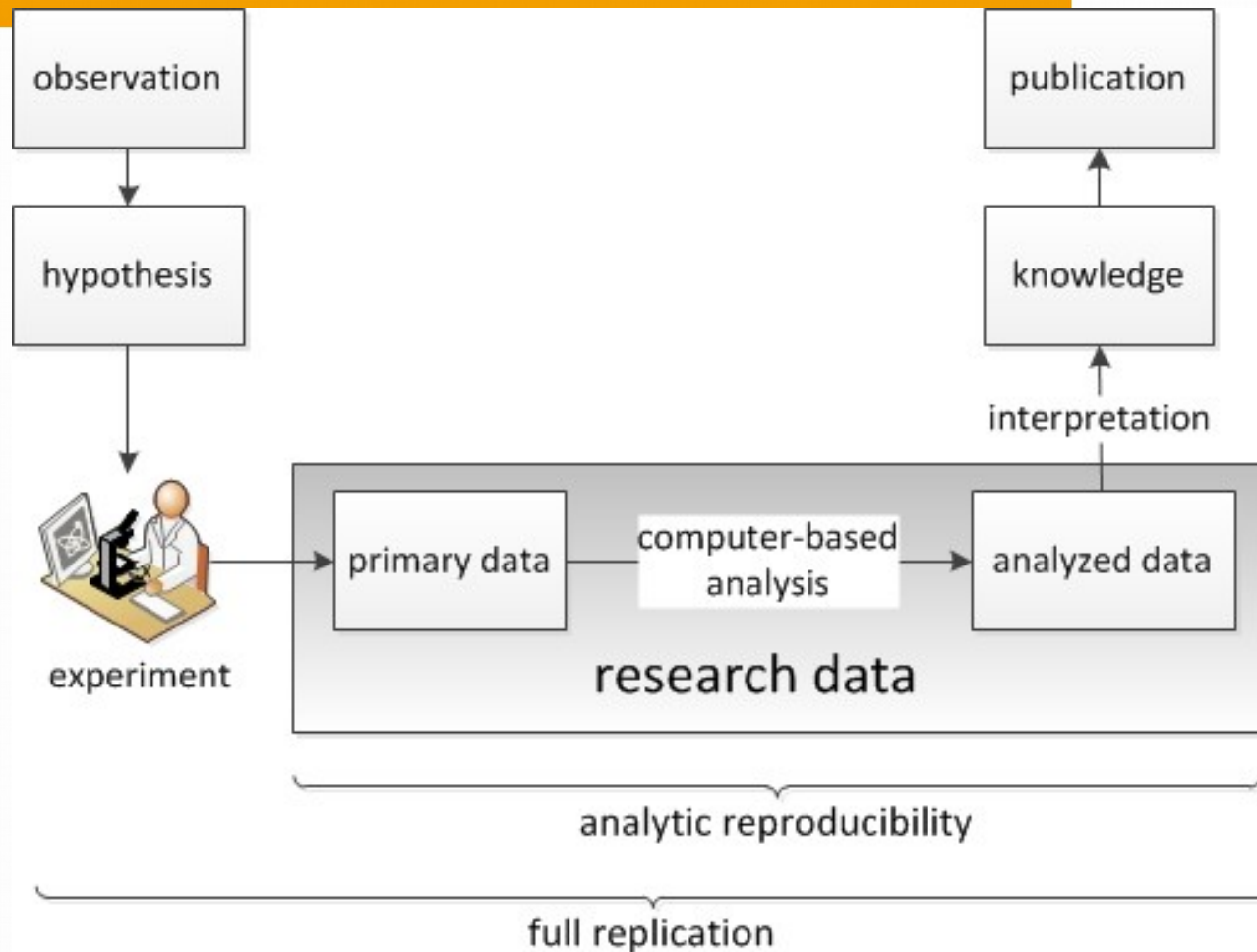
- DFG funded : 2016 – 2019. 
- CITEC + Bielefeld University Library
- Pilot research : 9 partners – interdisciplinary labs

Irreproducibility

- **Reproducibility** – basic principle of Science!
- **Irreproducibility**:
 - Nature survey – scientists (50-70%)
 - Psychology Reproducibility Project (61% fail)
 - Pharma clinical drug trials (82% fail)
- Reproducibility == Full Replication ?



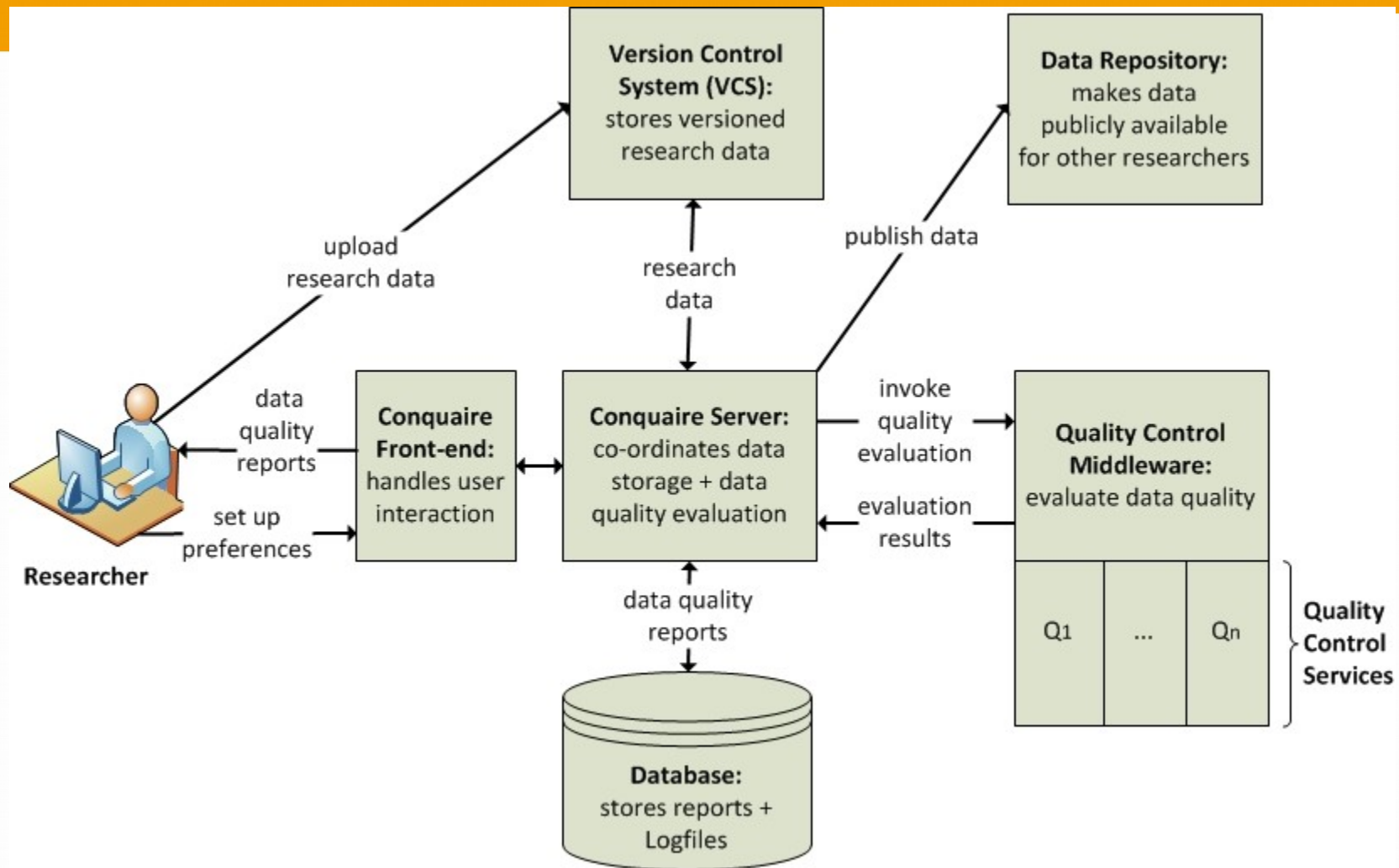
Analytical Reproducibility



Goals

- Research Data Management (RDM) - generic infrastructure
- Support analytical reproducibility of research results
- Storage + DVCS Versioning → data sharing & reuse
- Data Quality = Open formats + Validation (raw, results) + scripts
- Continuous integration → quality data

Architecture



PUB!

Universität Bielefeld
PUB – Publications at Bielefeld University
Deutsch

Publications at Bielefeld University

Home
Publications
Data Publications
Authors
About PUB

Login

"PUB – Publications at Bielefeld University" is the institutional repository of Bielefeld University. It constitutes the central depot for publication meta data, publications and research data with the mission to reflect the scientific work of the university's researchers. Bielefeld scientists of all disciplines can use this service to create and maintain their personal publication lists. The records are freely accessible and partially linked with fulltexts and research data. [Learn more...](#)

- ➔ **51935 Publication References**
Bibliographic data, partially enriched with fulltexts (PDFs etc.)
- ➔ **3427 Individual Author Pages**
Documentation of Bielefeld researchers' publishing activities
- ➔ **179 Data Publications**
Bibliographic data, partially enriched with research data
- ➔ **9174 Open Access Publications**
Freely accessible documents
- ➔ **1853 Theses**
Bielefeld dissertations, post-doctoral, and selected master and bachelor theses

Open Access at Bielefeld University

Research Data Management

PUB Theses

Data Seal of Approval

Contact Policy Imprint

Powered by LibreCat

© 2010-2017 Bielefeld University Library

ORCID | Member Organization

Connecting Research and Researchers

Further Memberships & Certificates

Support Publication Services

Susanne Riedel

Phone: 0521/100-4008

publikationsdienste.ub@uni-bielefeld.de

PUB Overview

- **Management of Institutional research output:**

- Scientific literature & research data at #UniBi

- **Built with LibreCat:** 

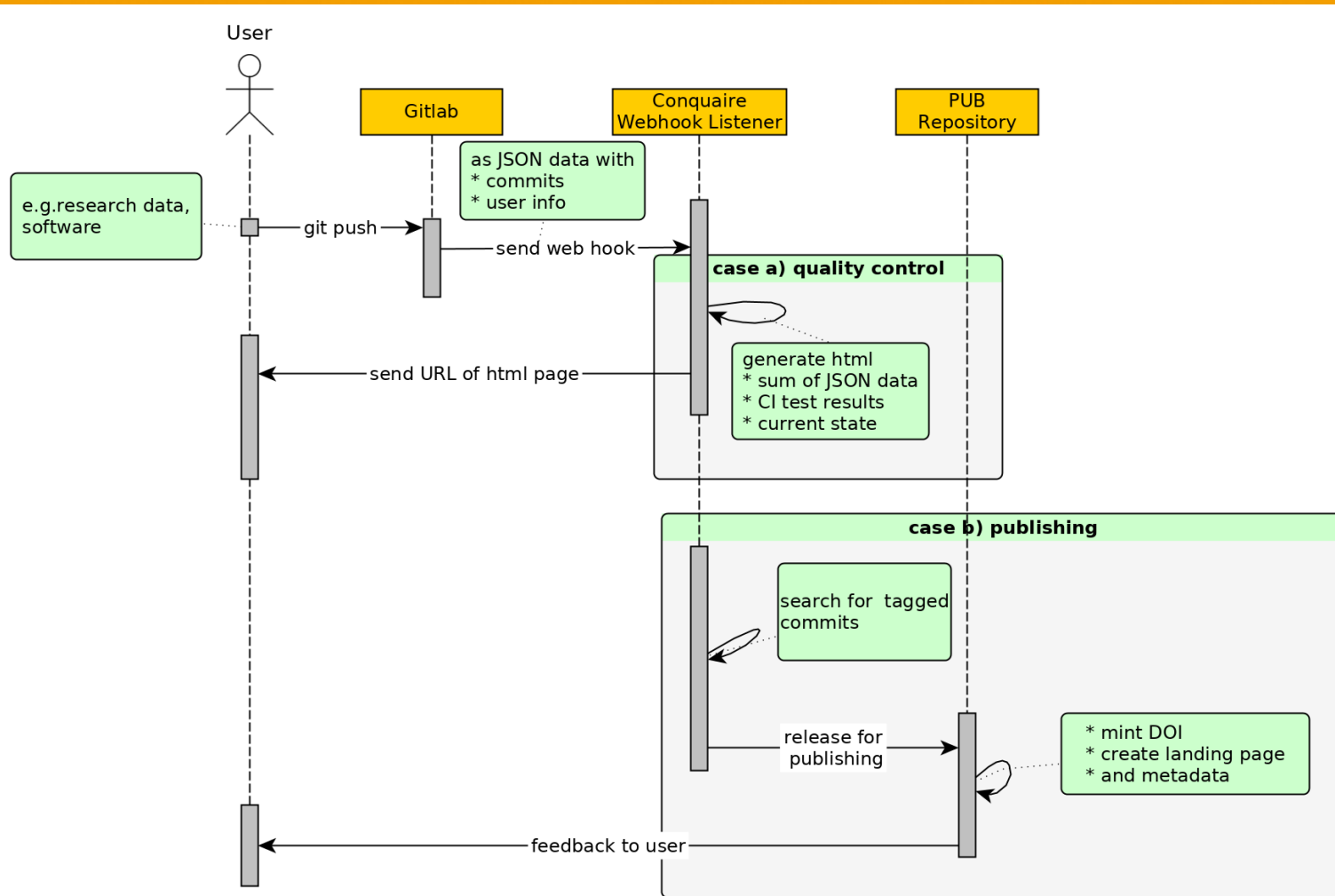
- Joint effort of Lund, Gent, Bielefeld libraries.

- **Provides:**

- Author publication lists, supports ORCID
- Mints DOI / URN for permanent, reliable citation
- Interfaces (OAI, SRU, CQL)
- Formats (DC, MODS, DataCite, XMetaDissPlus)
- Linking of research data with literature
- Partner in the SAFE Private LOCKSS Network - distributed preservation network.
- Data Seal of Approval certification



Connecting Gitlab, Conquaire & PUB



Thank You!

Questions? Contact:

- Email: ayer@uni-bielefeld.de
- Twitter: [@svaksha](https://twitter.com/svaksha)
- Email (project):
conquaire-contact@lists.uni-bielefeld.de
- Website: <http://conquaire.uni-bielefeld.de>